

Stormwater

About

CoB Projects

Funders

Contact

Need for Drainage Engineering Department
David Licon, Jr.

SWG Summer 2017
Stakeholder Partnering Forum

August 16, 2017

CITY OF BROWNSVILLE
On the Border By the Sea

Stormwater in Brownsville

- Introduction
- **Problematic Areas**
- **Past Projects**
- Current Projects
- **Future Project**
- Q & A



Need for Drainage Engineering Department

David Licon, Jr.

SWG Summer 2017
Stakeholder Partnering Forum

August 16, 2017





Drainage Issues

Topography

Average Elevation

- Lowest 7 ft
- Highest 34 ft

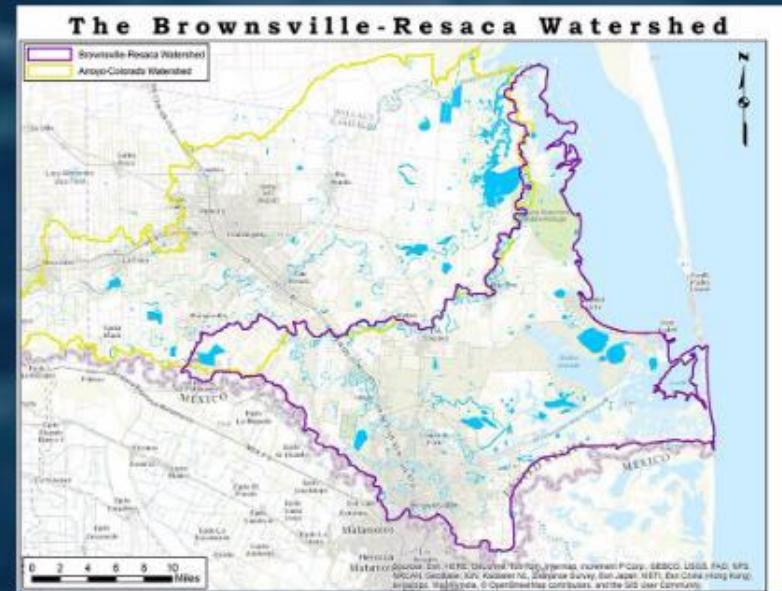


Geographical Location

Rio Grande River Watershed



Laguna Madre Watershed



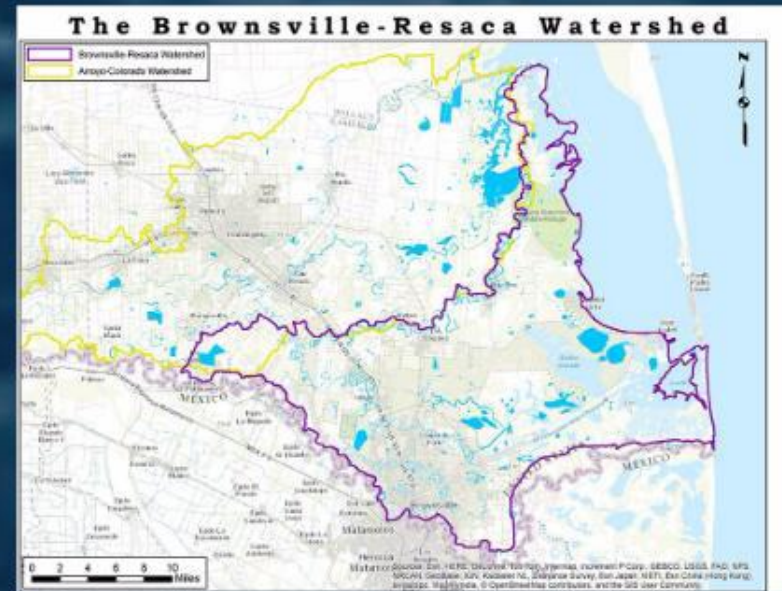


Geographical Location

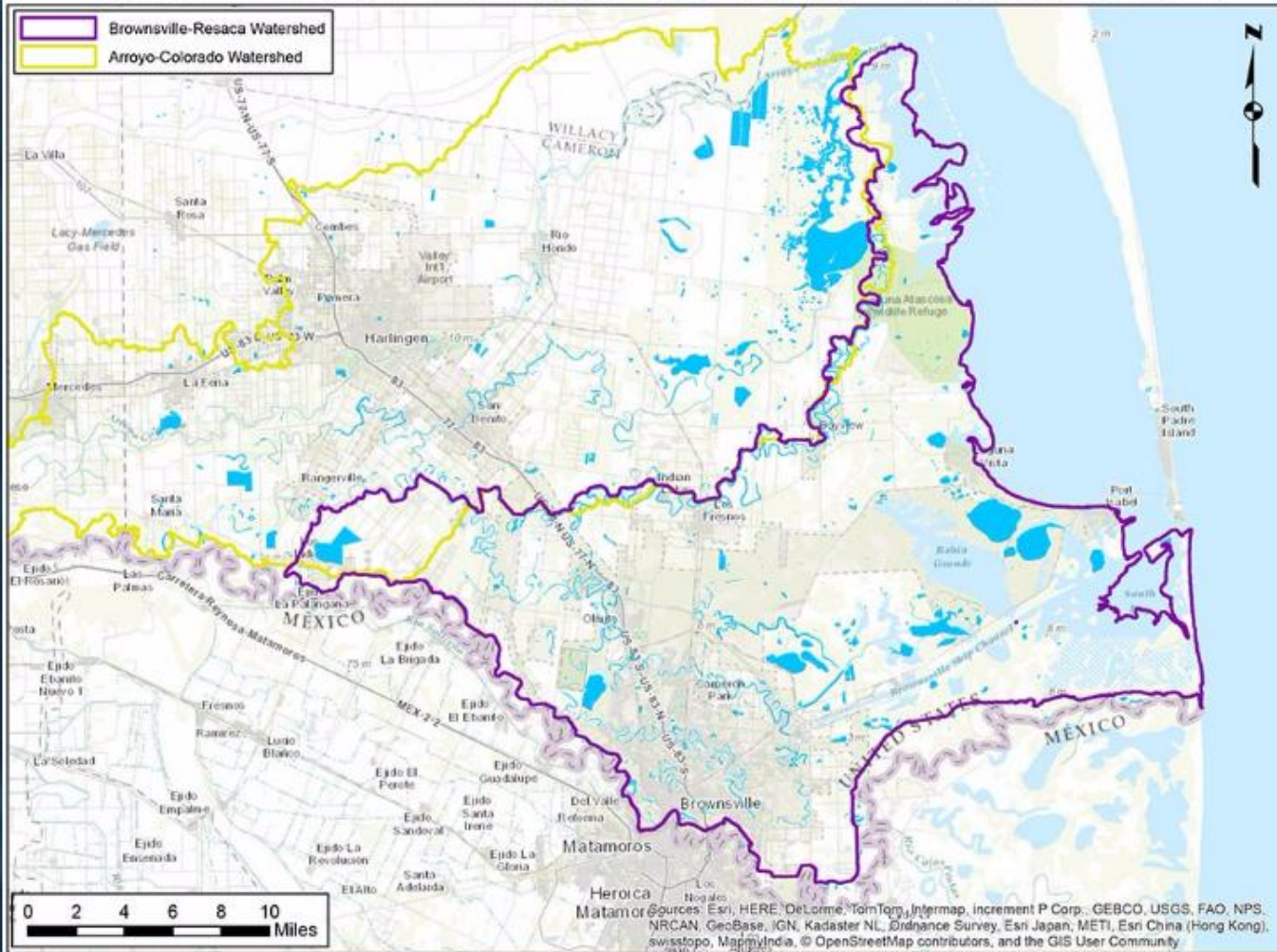
Rio Grande River Watershed



Laguna Madre Watershed



The Brownsville-Resaca Watershed



Infrastructure Deterioration

- Flooding occurs typically after 4” of constant or intense rainfall
- The current Stormwater System is aging and was not designed for current development and growth patterns.



Stormwater

About

CoB Projects

Funders

Contact

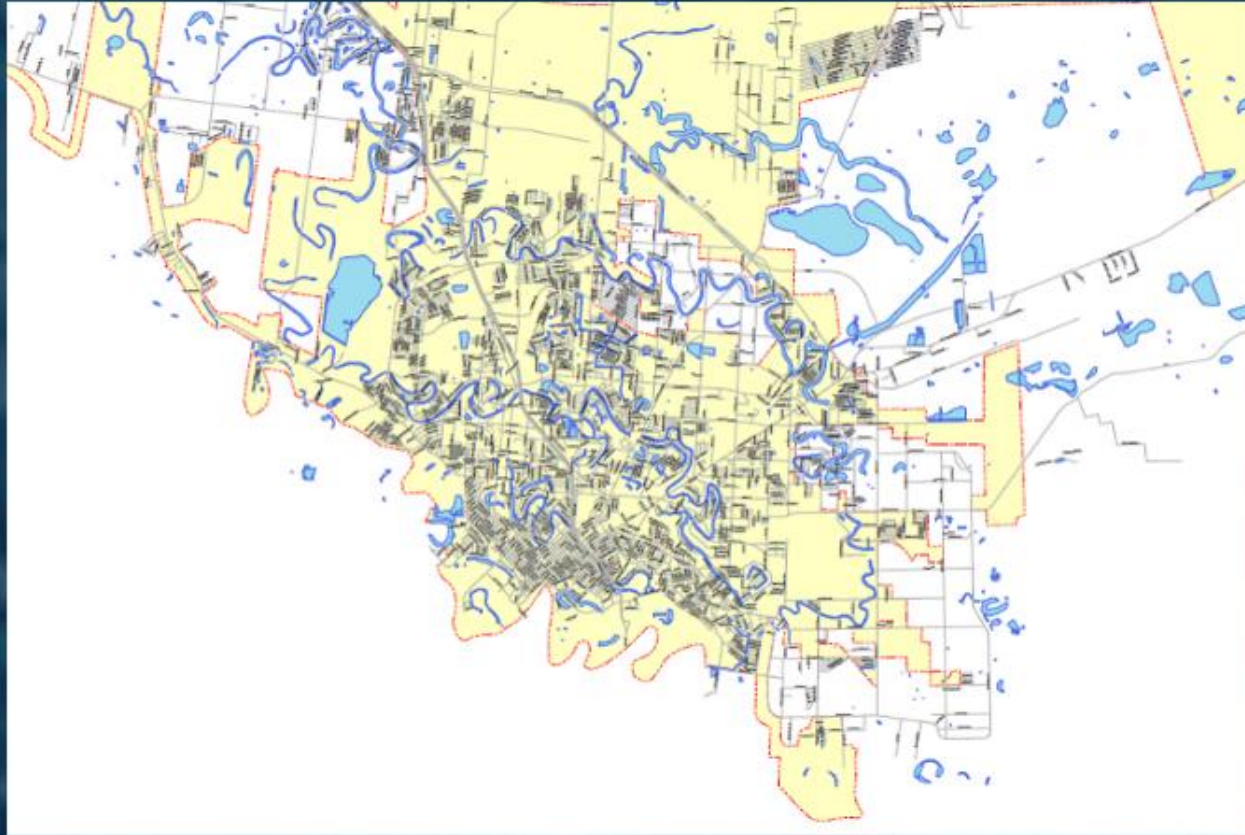
Need for Drainage Engineering Department
David Licon, Jr.

SWG Summer 2017
Stakeholder Partnering Forum

August 16, 2017

CITY OF BROWNSVILLE
On the Border. By the Sea.

City of Brownsville



City of Brownsville

Past Project Locations



Garden Park Ph2
CDBG/GLO - \$1,200,000



Garden Park Ph1
CDBG/GLO - \$1,100,000



Stormwater Camera
BCIC - \$215,000



Monte Bella Park
TAMUK - \$300,000

City of Brownsville

Current Project Locations



Stormwater Sensors
GLO - \$150,000



SCADA Implementation
CDBG/GLO - \$450,000



Hope Park Pump
CDBG/COB - \$800,000



S.W. Pipe Modeling
COB



Laguna Madre Watershed LiDAR
TNRIS - \$250

City of Brownsville

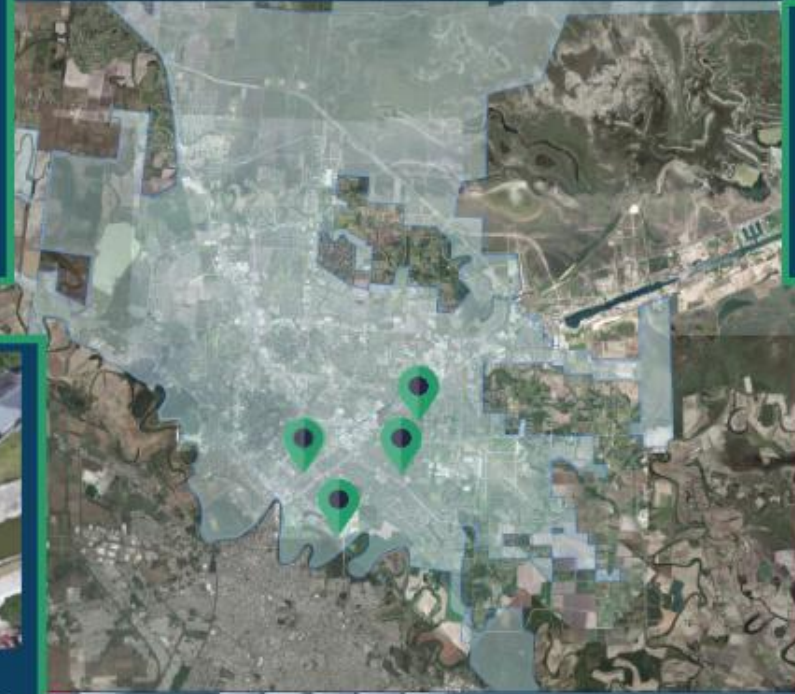
Future Project Locations



International Blvd.
EPA - \$100,000



Impala Pump Recon
TWDB - \$1,200,000



4-Corner Waterplein Park
TWDB - \$1,200,000



N.M.D Re-Lining
TWDB - \$1,000,000



Need for Drainage
Engineering Department
David Licon, Jr.
SWG Summer 2017
Stakeholder Partnering Forum
August 16, 2017

Stormwater
About
CoB Projects
Funders
Contact



CITY OF
BROWNSVILLE
On the Border, By the Sea

Present Partnerships

Past/Current/Upcoming





Need for Drainage
Engineering Department
David Licon, Jr.

SWG Summer 2017
Stakeholder Partnering Forum

August 16, 2017

City of BROWNSVILLE
On the Border. By the Sea.

Navigation menu (hexagonal icons):

- Stormwater
- CoB Projects
- About
- Funders
- Contact
- www
- Icons: raindrops, power button, globe, stack of money, envelope, compass, gear, briefcase, globe

Questions







Need for Drainage
Engineering Department
David Licon, Jr.

SWG Summer 2017
Stakeholder Partnering Forum

August 16, 2017

City of BROWNSVILLE
On the Border. By the Sea.™

Navigation menu (hexagonal icons): Stormwater, CoB Projects, About, Funders, Contact, and various engineering and environmental symbols.

Contact Info

City of Brownsville Engineering Department





Need for Drainage Engineering Department

David Licon, Jr.

SWG Summer 2017
Stakeholder Partnering Forum

August 16, 2017

