

WORKING TOGETHER TO BUILD RESILIENCY; From a Seawall to a Coastal Spine



Patricia "Trish" Anslow
Chief, Planning and Policy Division
USACE-Southwestern Division



Brian Harper
Director, Civil Works Planning
USACE-Southwestern Division Regional
Planning & Environmental Center



US Army Corps
of Engineers®



WORKING TOGETHER TO BUILD RESILIENCY

From Seawall to a Coastal Spine

Planning & Policy Division

Patricia “Trish” Anslow

Chief, Planning and Policy, Dallas, TX

Regional Planning & Environmental Center

Brian Harper

Director of Civil Works Planning



US Army Corps
of Engineers®

11 FEBRUARY 2021



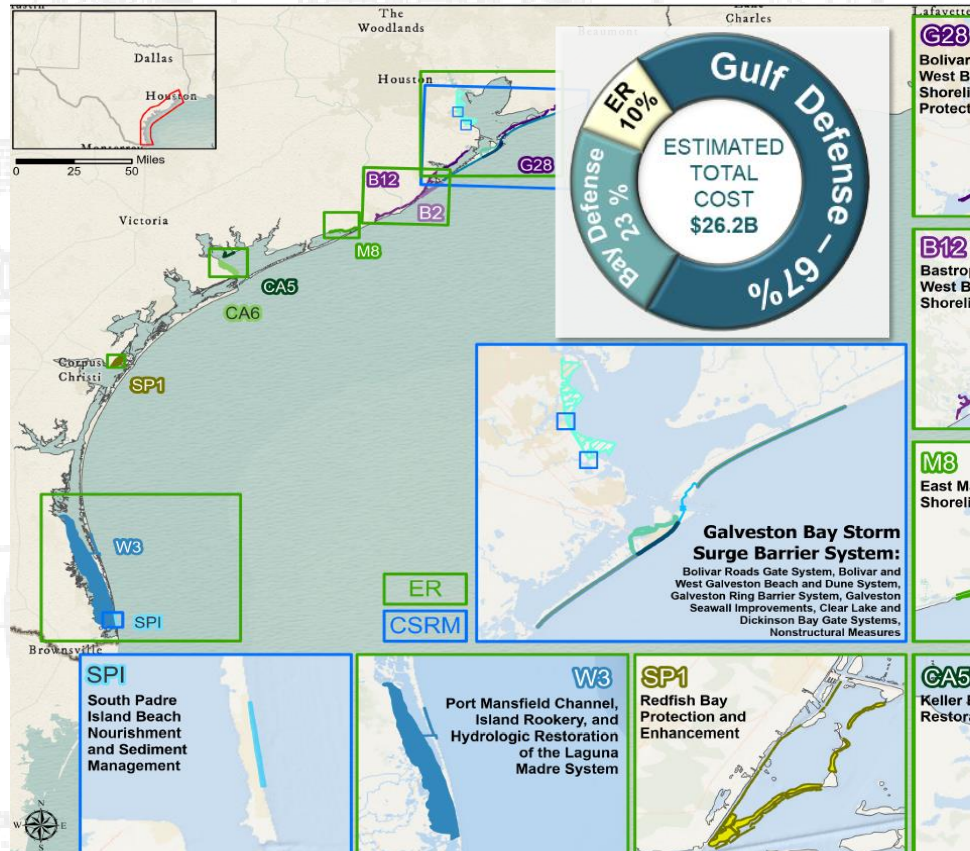
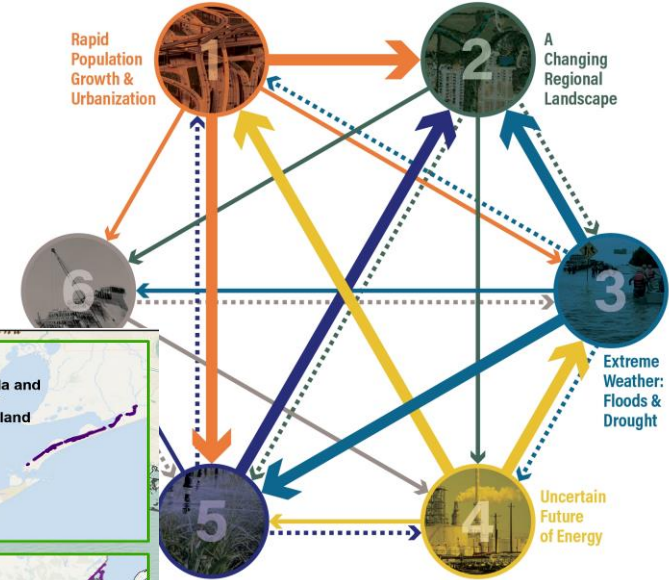
AGENDA

- Shared goals
- Water Resources Development Act of 2020
- Opportunities for partnerships



SHARED GOALS

Resiliency
Economic Development
Project Affordability



SWD Civil Works Strategic Plan

U.S. Army Corps of Engineers
Southwestern Division (SWD)





WATER RESOURCE DEVELOPMENT ACT OF 2020



POLICIES

Resiliency

Programs for Economically Distressed and Rural and small Communities

Section 7001 proposals

Water Resources Development Act of 2020

PROJECTS

- Jefferson Co Ecosystem Restoration
- GIWW- Brazos River Flood Gates & CO Locks
- Matagorda Ship Channel Improvement, Port of Lavaca
- Houston Ship Channel Expansion Channel (3) counties
- Corpus Christi Ship Channel, TX (deepening & Widening)

STUDIES

- Chocolate Bayou, TX
- Houston-Galveston, TX
- Port Arthur & Orange County, TX
- Port of Victoria, TX





COMPREHENSIVE BENEFITS DIRECTIVE

- ASA(CW) memo on Comprehensive Documentation of Benefits, 5 JAN 2021
- Requires study teams to “identify and analyze benefits in total and equally across a full array of benefit categories.”
- Broadens the benefit evaluation from National Economic focus to an equal consideration of social, environmental, and regional economic benefits
- The level of the analysis will vary based on the magnitude of the change, its relevance to decision-making, and the availability of data, tools, and procedures to quantify or monetize the benefit or impact.
- Required Alternatives
 - No Action
 - Maximize net NED
 - Maximize net Total Benefits
 - Non-structural and/or Nature based plan
 - Locally preferred plan, if requested
- May include:
 - Plans that can be implemented without Fed involvement
 - Plans that can be implemented by other Fed agencies



DEPARTMENT OF THE ARMY
OFFICE OF THE ASSISTANT SECRETARY
FOR WATER
500 ARMY PERSEUS
WASHINGTON, D.C. 20315-0100

SACW

5 January 2021

MEMORANDUM FOR COMMANDING GENERAL, U.S. ARMY CORPS OF ENGINEERS
SUBJECT: POLICY DIRECTIVE - Comprehensive Documentation of Benefits in Decision Document

- Purpose.** This memorandum issues policy direction on the comprehensive assessment and documentation of benefits in the conduct of U.S. Army Corps of Engineers (USACE) water resources development project planning. This policy updates current procedures, and emphasizes and expands upon policies and guidance to ensure the USACE decision framework considers, in a comprehensive manner, the total benefits of project alternatives, including equal consideration of economic, environmental and social categories. This directive pertains to pre- and post-authorization decision documents (reports), as well as other decision documents approved under delegated authorities. In addition, the directive may be applied to benefit cost analyses required to support budgetary decision-making processes. As stated in my 15 July 2020 memorandum to the Deputy Commanding General for Civil and Emergency Operations, one of my highest priorities is to ensure this policy directive is implemented as soon as practicable.
- Applicability.** This directive applies immediately to all USACE elements having Civil Works planning, engineering, design, construction, and operations & maintenance responsibilities. The policies contained in this directive shall remain in effect and fully applicable unless and until modified, supplemented, amended, or rescinded expressly and in writing by the ASACW. See also, paragraph B, Limitation on Modification.
- Background.** Civil Works planning guidance, contained in Engineer Regulation (ER) 1105-2-100 (Planning Guidance Notebook), provides the overall direction by which Civil Works projects are formulated, evaluated and selected for implementation. ER 1105-2-100, published in 2000, contains a description of the USACE planning process, missions and programs, specific policies applicable to each mission and program, and analytical requirements.
 - This directive supplements the guidance provided in ER 1105-2-100 by requiring comprehensive consideration of total project benefits including economics, environmental, and social categories, until a comprehensive update is accomplished.
 - As outlined in ER 1105-2-100, USACE currently applies the *Economic and Environmental Principles and Guidelines for Water and Related Land Resources Implementation Studies* (i.e., *Principles and Guidelines*) when formulating and evaluating Civil Works water resources development project alternatives. The Water Resources Council released the *Principles and Guidelines* (P&G) in 1983.



COMPREHENSIVE BENEFITS

-- OUR OUTLOOK --

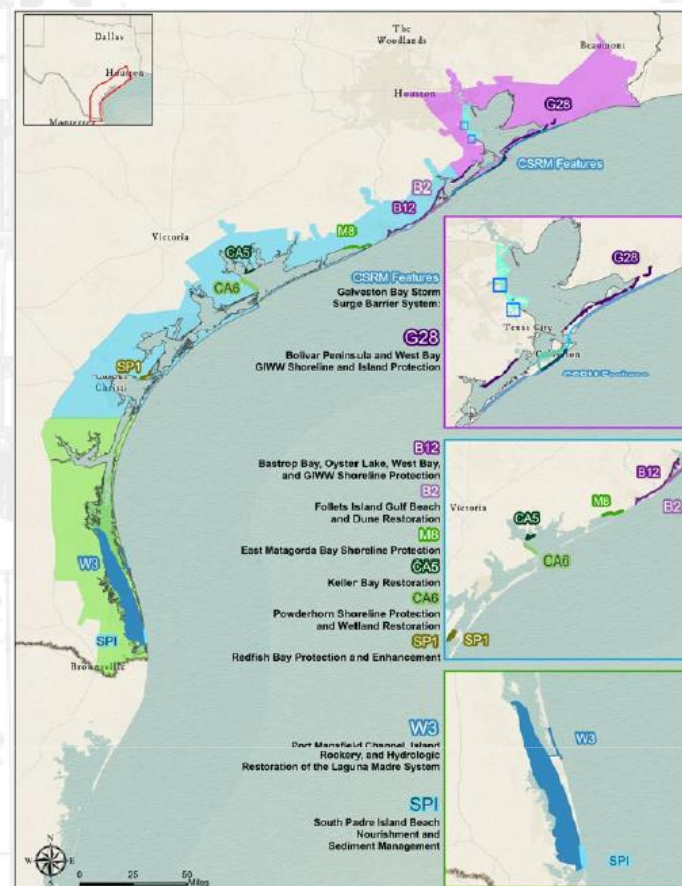
- Codifies several practices we've been using in SWG for 5 years, and opens the door to more
- NOT LIKELY to change benefit-cost ratios; instead, will recognize the value of items not in the BCR
- Will take some time to develop procedures equivalent to the NED procedures; maybe then we'll see BCR effects
- In the meantime, qualitative and semi-quantitative analyses of trade-offs to be used
- Focus areas:
 - Public health and safety
 - Resilience in communities, natural systems, and critical infrastructure
 - Social Vulnerability
 - Regional economic effects
 - Ecosystem goods and services

OPPORTUNITIES FOR PARTNERSHIPS



Key Objective is to work with Partners to:

- Collaborate on resilience actions at all scales
- Increase use of natural & nature-based features
- Maximize beneficial use of sediments
- Integrate across USACE missions in navigation, coastal habitats, and storm resilience





DISCUSSION QUESTIONS AND ANSWERS