



# PORT HOUSTON **SUSTAINABILITY ACTION PLAN**

USACE STAKEHOLDER PARTNERING FORUM

**FEBRUARY 24, 2022**



# OUR VALUABLE PARTNERSHIP



## US Army Corps of Engineers

### MISSION

Deliver vital engineering solutions, in collaboration with our partners, to secure our Nation, energize our economy, and reduce disaster risk.

### VISION

Engineering solutions for our Nation's toughest challenges.

### PRIORITIES

People, Readiness, Partnerships, Revolutionize

## Port Houston

### MISSION

To move the world and drive regional prosperity

### VISION

America's distribution hub for the next generation

### GOALS

People  
Infrastructure  
Partnerships  
Stewardship



# OUR BOARD: THE “G” OF ES<sup>2</sup>G



**Roger Guenther**  
*Executive Director*



**Ric Campo**  
*Chairman of the Port Commission*



**Dean E. Corgey**  
*Commissioner*



**Clyde Fitzgerald**  
*Commissioner*



**Stephen H. DonCarlos**  
*Commissioner*



**Roy D. Mease**  
*Commissioner*



**Wendy Montoya  
Cloonan**  
*Commissioner*



**Cheryl D. Creuzot**  
*Commissioner*

# THE NATION'S BUSIEST WATERWAY

## Port Houston

- 8 public facilities all cargos
- 3.5MM TEU
- 6000 Trucks / Day
- Largest project cargo & steel port
- Houston Ship Channel "Project 11"

## Houston Ship Channel

- 200 private facilities
- World scale petro-chem complex
- Energy & chemicals capital
- 800MM BBL storage
- Over 1200 pipelines all products

## Together



**\$3.2 MILLION**  
JOBS NATIONWIDE



**\$802 BILLION**  
ECONOMIC IMPACT  
ACROSS THE U.S.

**>275 MILLION  
TONS/YR**

NATION'S LARGEST PORT  
BY TONNAGE



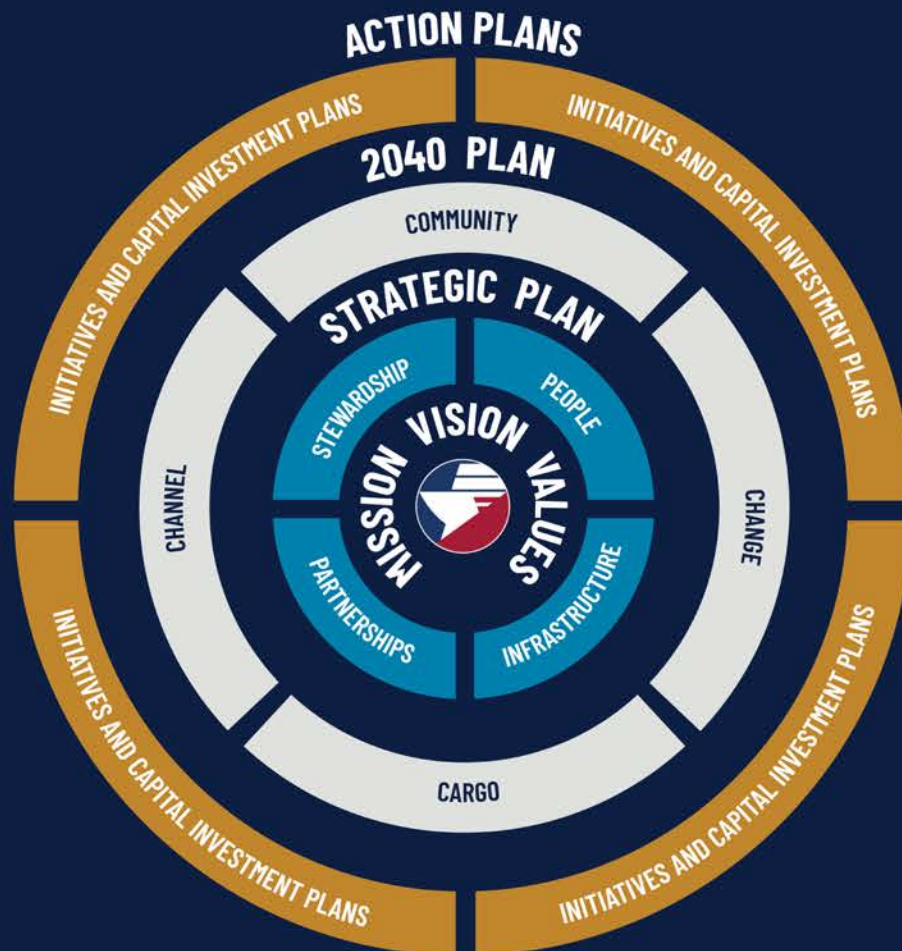
BUSIEST U.S. WATERWAY:  
**10,000 VESSELS**  
&  
**200,000 BARGE**  
TRANSITS ANNUALLY



PORT HOUSTON



# STRATEGY TO ACTION PLANS



## CHANNEL

### ADVOCATE

Houston Ship Channel

Support continuing regional growth through expansion of the Houston Ship Channel



## CARGO

### PROMOTE

Core Business

Maximize operating performance to support growth



## COMMUNITY

### ENHANCE

Community Connections

Optimally partner and Steward resources to benefit stakeholders



## CHANGE

### PREPARE

Port of the Future

Adapt new trends and technologies to create value, sustainability, and resiliency

PROJECT  
11

CAPITAL  
PROGRAM

ES<sup>2</sup>G

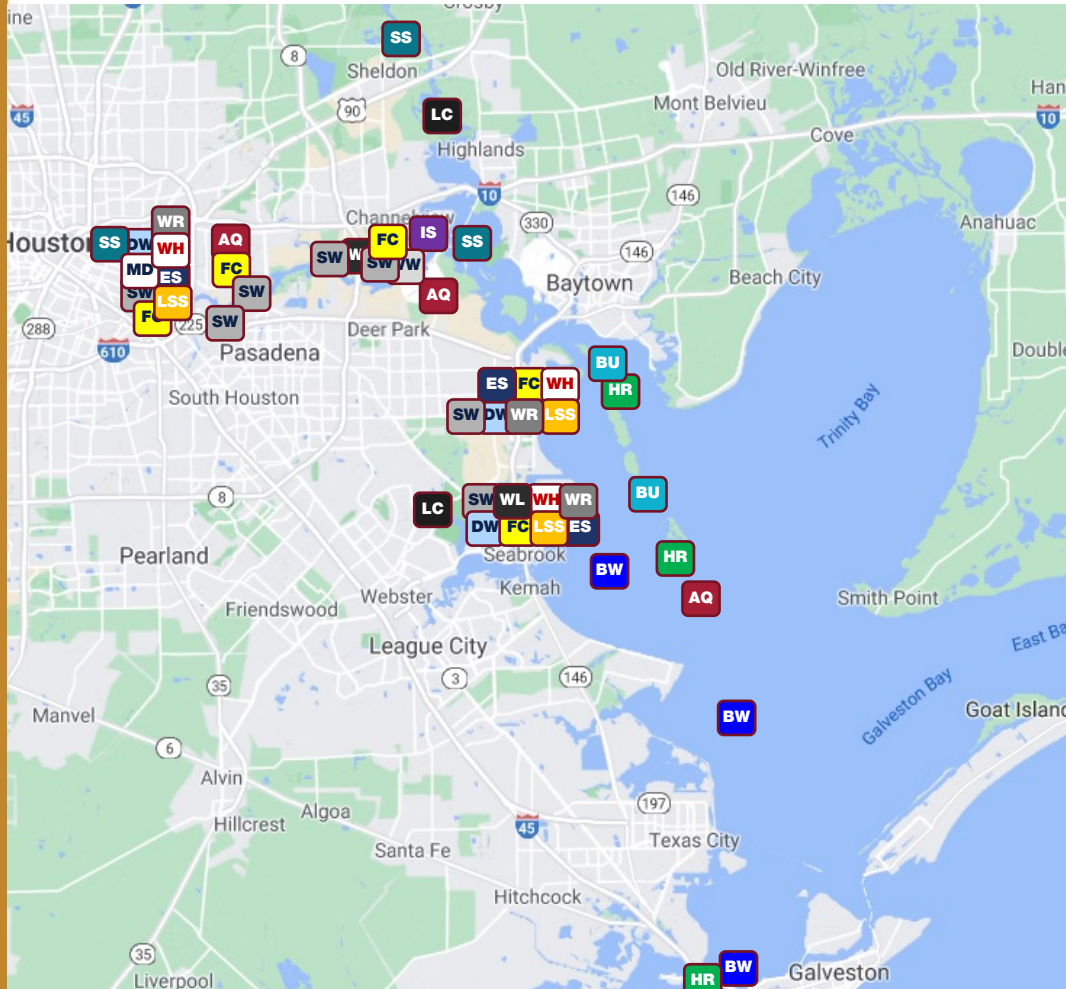
SUSTAINABILITY  
ACTION  
PLAN



PORT HOUSTON

# WHY SUSTAINABILITY?

## NO SHORTAGE OF CHALLENGES AND OPPORTUNITIES



- AQ** Air Quality
- BW** Bay water quality
- BU** Beneficial Use
- DW** Drinking water
- ES** Energy & Sustainability
- FC** Fence Line Communities
- HR** Habitat Restoration
- IS** Industrial Source Monitoring
- LC** Land Conservancy
- LSS** Light, Sights and Sounds
- MD** Marine Debris
- SS** Sediment and Shoaling
- SW** Stormwater
- WR** Waste Recycling

## COMMUNITY FEEDBACK

- “reduce emissions”
- “mitigation needed”
- “be a good neighbor”
- “jobs”
- “hot spots”
- “transparency”
- “save the Bay”
- “plant trees”
- “promote justice”
- “diversity & inclusion”
- “sustainability / ESG”

- WW** Wastewater
- WL** Wetlands
- WH** Workplace Health

# MESSAGE: FOCUS, RESULTS, ACTION, COLLABORATION



*"...We know today's work must be done sustainably for future generations...From a renewed focus on climate and environmental quality to the need for improved social justice, our need to call ourselves and others to more action has never been more critical.*

*The path we are on has already delivered results...Still, we recognize the importance of doing more...*

*We know we cannot do it alone, and collaboration and partnership will be keys to our success. Together with YOU, our partners, we can create a more sustainable future for all."*



# ES<sup>2</sup>G

## ENVIRONMENT, SOCIAL, SAFETY & GOVERNANCE + ACTION





**72 + 27**

**NEW initiatives identified\***

Alternative Fuel Drapage

100% Renew. Electr.

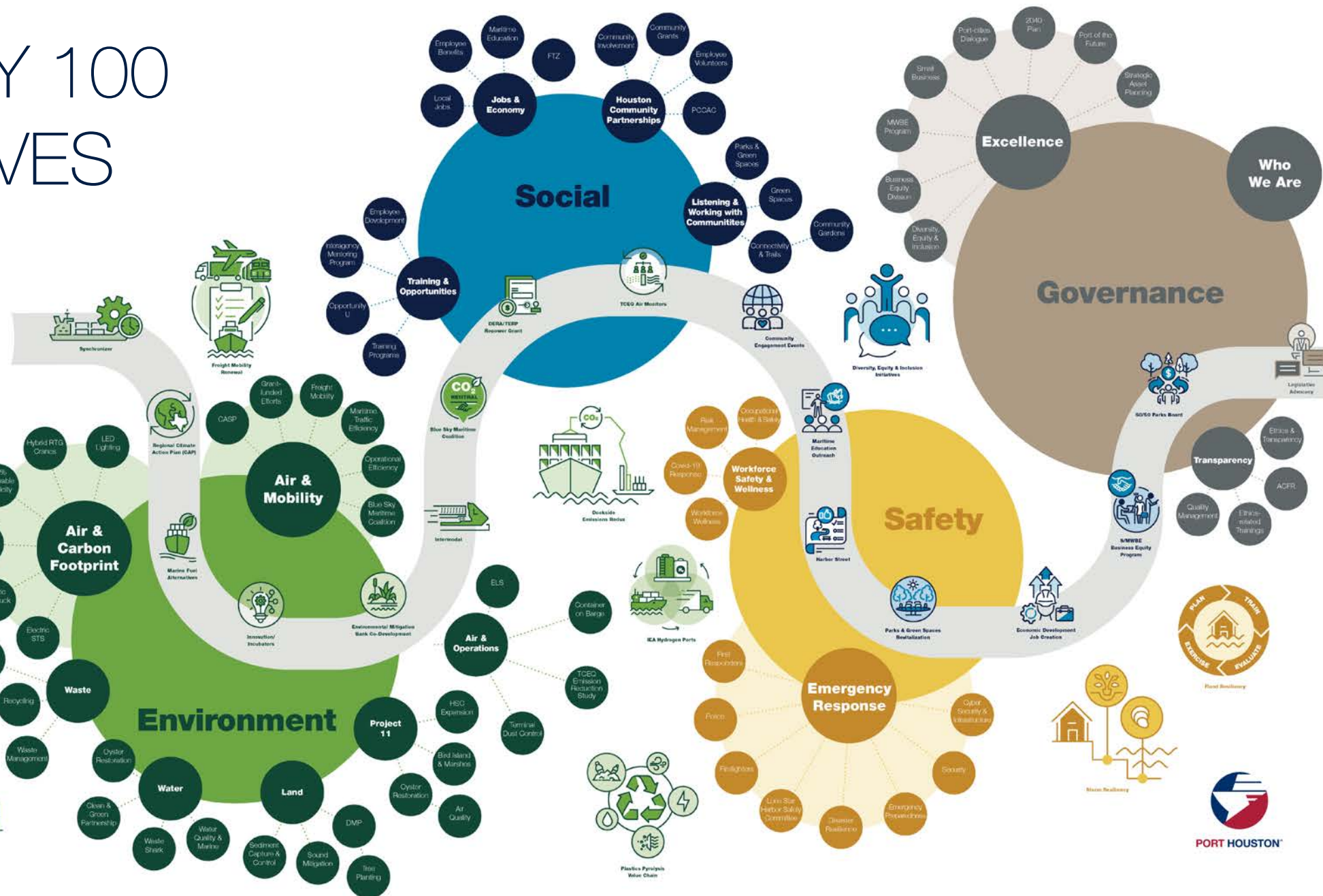
Electr. Vehicles

Electr. Vess. & Tugs

Nuclear Supply

Reducing Waste

CSE Electrification



# PORT HOUSTON: LEADING TOWARD A GREENER FUTURE



**WORLD'S 1ST  
PUBLICLY-OWNED PORT  
TO BE CERTIFIED  
TO RIGOROUS ISO 14001  
ENVIRONMENTAL  
MANAGEMENT  
SYSTEM STANDARD**

(2002)



Reduces carbon footprint by

**55%**

since 2016



Port Houston has built more than  
**3,300 ACRES**  
of marsh/habitats for wildlife

Houston Wilderness awards Port Houston the  
**2020 WILD LIFE AWARD**  
for tree planting work



Port partners with Houston Wilderness to plant  
**1 MILLION TREES BY 2030**  
improving air quality and beautifying local communities along the ship channel.



**1ST GULF PORT TO DEPLOY  
ELECTRIC YARD TRACTORS**

Port Houston recycled more than

**75,000 TONS**

of material in 2020.



First port to switch to

**100%**  
**ASSET-BACKED  
RENEWABLE  
ELECTRICITY**

(2020)



Reduced all  
criteria air pollutants

**15-93%**  
between 2013-2019



PORT HOUSTON



# CONNECTED THROUGH SOCIAL, SAFETY AND GOVERNANCE



Invested  
**\$5,000,000**  
in Maritime  
Education  
since 2010



**AWARDED**  
**\$550,000**  
in Community  
Grants since  
2020-2021



Received the Government Finance  
Officers Association Certificate of  
Achievement for Excellence in  
Financial Reporting for  
**43 CONSECUTIVE YEARS**

# NEW INITIATIVES

2020-2021



## Third Thursday Webinars

2020  
Audience

**1,035**

2021  
Audience

**553**



## Workshops

2020  
(2040 Plan)

**405**

2021  
(Environment)

**70**



## Customer Care Line

2020  
Inquiries

**148**

2021  
Inquiries

**723**



## Direct Mail

Community

**33,680**

S/MWBE

**1,600**



## PCCAC

Members

**14**

Meetings

**6**



## Navigating The Future

Live-streamed  
views

**1,108**



# ONGOING INITIATIVES

2020-2021

- Community Info Line  
**31 inquires**
- Speakers Bureau  
**128,151 people reached**
- Community Grants Program  
**\$650,000 awarded**
- Website  
**3,965,825 visits**
- Maritime Education  
**50 virtual & in-person learning opportunities**
- Social Media  
**52,028 followers**
- M/V Sam Houston  
**Hosted 100 local officials on tours**
- Commission Mtgs.  
**11 meetings annually**



# WHAT MORE CAN WE DO?

## SUSTAINABILITY ACTION TEAM



**Kinder Baumgardner**  
Managing Principal,  
SWA Group



**Nelson Espitia**  
Community Relations Director,  
Harris County Precinct 2,  
Adrian Garcia



**Lance Nunez**  
Global Marine and Terminal  
Logistics Director,  
Dow



**Craig Raborn**  
Director of Transportation,  
Houston-Galveston Area Council



**Rev. James Caldwell**  
Founder/Director,  
Coalition of Community Organizations



**Christine Galib**  
Senior Director,  
The ION Houston



**Rachel Powers**  
Executive Director,  
Citizens' Environmental Coalition



**Bob Stokes**  
President,  
Galveston Bay Foundation



**Lara Cottingham**  
Chief Sustainability Officer,  
City of Houston



**Paula Gant**  
Senior Vice President,  
Strategy and Innovation  
GTI Energy



**Filip Vandenbussche**  
Representative for North America  
Port of Antwerp, Belgium



**Colonel Timothy Vail**  
Galveston District Commander,  
USACE



**Judge Ed Emmett**  
Fellow in Energy & Transportation  
Professor in the Practice,  
Rice University



**Drew Nelson**  
Clean Energy Program Officer,  
Cynthia George Mitchell Foundation



**Matt Woodruff**  
Vice President of Public  
and Government Affairs,  
Kirby Corporation

## PARTICIPATION

3

ROUNDS

80

STAKEHOLDERS

—  
Outputs validated by  
Select Advisory Board



PORT HOUSTON



# WHAT CAN PORT HOUSTON DO?

## SUSTAINABILITY ACTION WORKSHOPS

### Stakeholder Focus

- Closer to Home more than Global Impact
- Near, Mid and Long Term
- Collaboration and Partnership is Critical
- Measurable
- Regional and Community Alignment

### Port Houston Sustainability Action Plan

- 27 Opportunities to Lead, Partner or Support Sustainability

## PORT HOUSTON SUSTAINABILITY ACTION PLAN PRIORITY AREAS:



### Clean Energy



### Air Quality



### Circular Economy



### Community Strengthening



### Transparency



# HOW CAN IT WORK?

## ACTION PLAN AND ENGAGEMENT MODEL

### LEADING



CHE Electrification



Maritime Education Outreach



Parks & Green Spaces  
Revitalization



Diversity, Equity & Inclusion  
Initiatives



Freight Mobility Renewal



Community Engagement  
Events



Economic Development  
Job Creation



S/MWBE Business Equity  
Program

### PARTNERING



Alternative Fuel Drayage



Dockside Emissions Redux



Harbor Street



Environmental Mitigation Bank  
Co-Development



Solar PV & Energy Storage



DERA/TERP Repower Grants



Parks and Green Spaces



Marine Fuel Alternatives



Plastics Pyrolysis Value Chain



Legislative Advocacy

### SUPPORTING



Decarbonization in Shipping



Innovation / Incubators



TCEQ Monitors



Regional Climate Action Plan  
(CAP)



Storm Resiliency



IEA Hydrogen Ports



Intermodal



Synchronizer



Flood Resiliency

# CURRENT EFFORT

## PROJECT 11



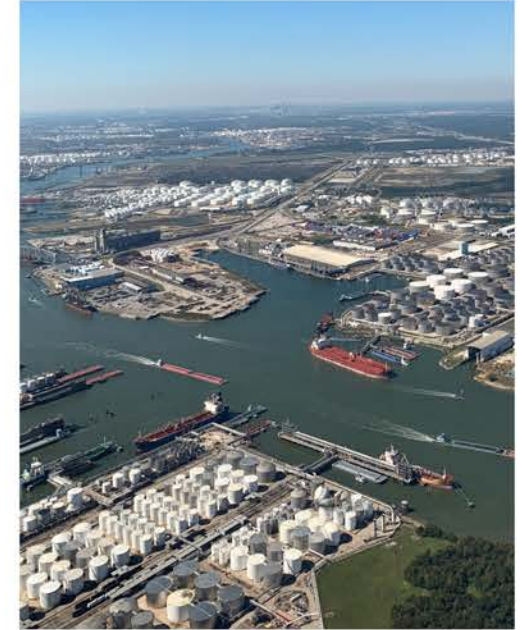
**Bird Islands**



**Oyster Reefs**



**Marsh**



**Air Quality**



# WHAT IS AHEAD?

## ROAD TO ZERO

### 2016-2021

*Reduced Carbon Footprint **55%***

100% Green Electricity  
Electric and Hybrid  
LED Lighting

### 2040

*Reduce Carbon Footprint **90%***

Sustainability Partnerships  
Green Shipping Corridors  
H2 Hub and CCUS Net  
Energy, Fuels and Fleet Transitions  
Intelligent Intermodal

### 2022

Smart Lighting  
Electrification  
Gate Efficiencies  
Sustainability Partnerships

### 2050

**100%**  
*Carbon Neutral*

Integrated Green  
Value Chains  
Carbon Negatives



# DECARBONIZATION FOCUS



## EXAMPLE

### FOUNDING MEMBERS



### SUPPORTING SPONSORS



### KNOWLEDGE PARTNERS



### FOCUS GROUPS

Measurement and Operational Efficiencies

Policy, Regulatory and Incentives

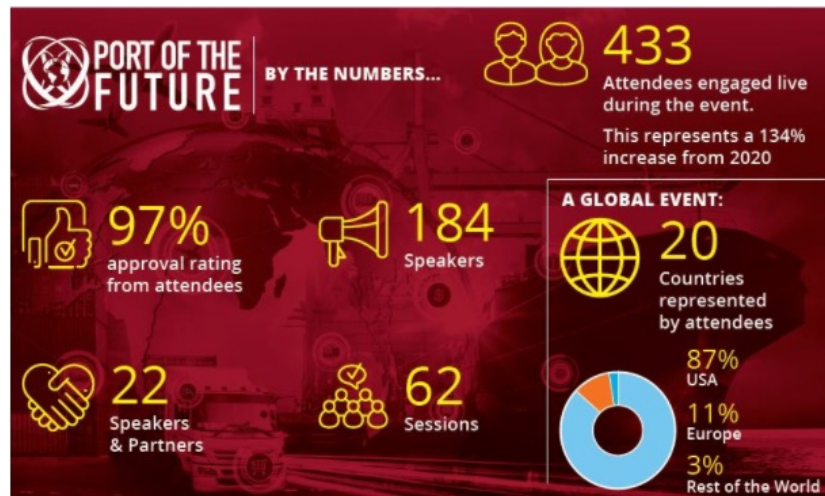
Finance, Commercial and Chartering

Technology, Infrastructure and Fuels





# PASSING THOUGHTS



UNIVERSITY of  
**HOUSTON**  
COLLEGE of TECHNOLOGY



**Port of**  
**Antwerp**  
Foundation Sponsor

**WÄRTSILÄ**  
Gold Sponsor



# THANK YOU

**PORT HOUSTON**



PORT HOUSTON™