



How to Build Momentum Toward a New Start Study

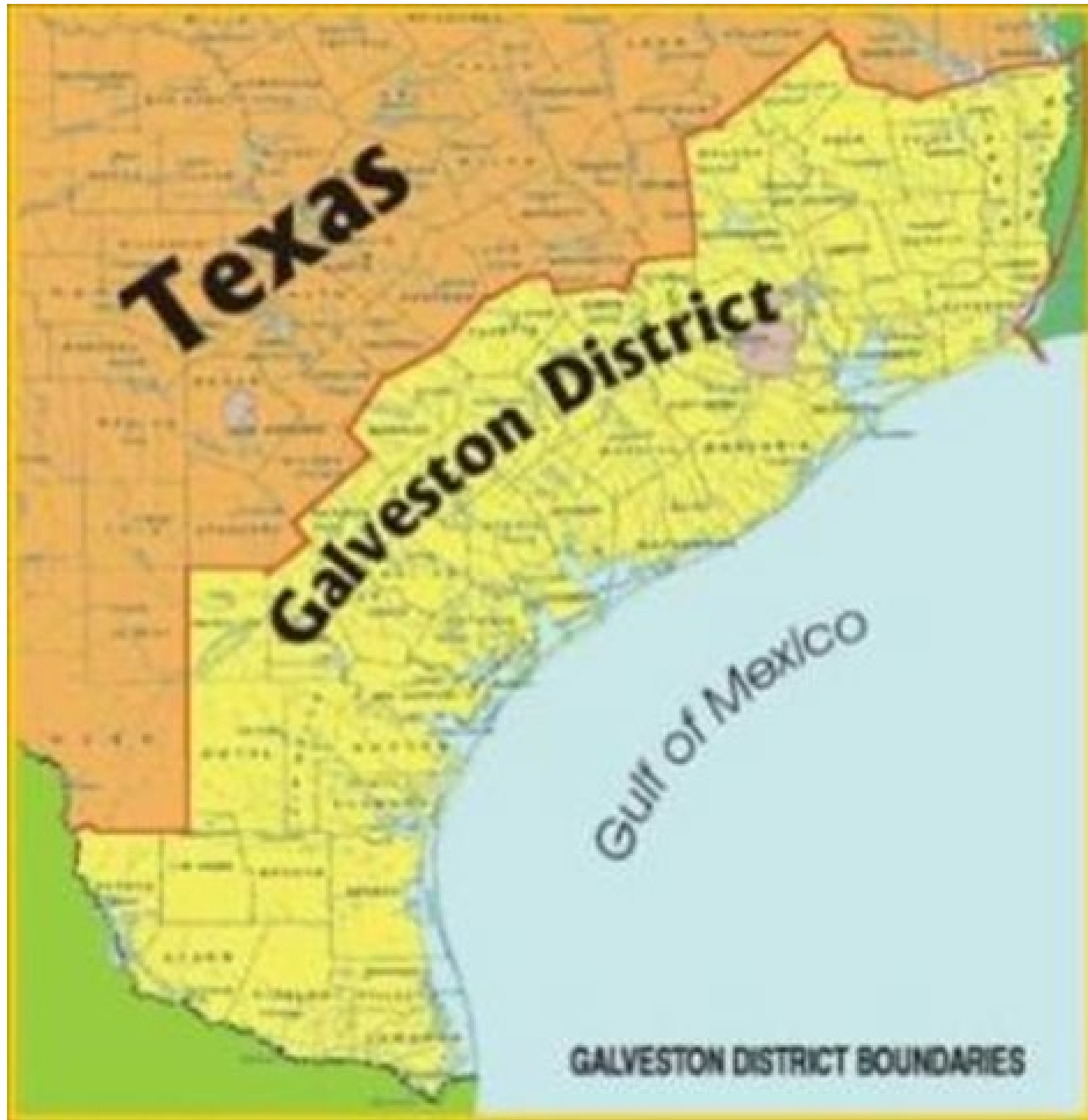
Reuben Trevino, USACE

*Continuing Authorities Program
&
Planning Assistance to States*

Reuben.Trevino2@usace.army.mil



USACE GALVESTON DISTRICT (SWG): HISTORY AND MISSION



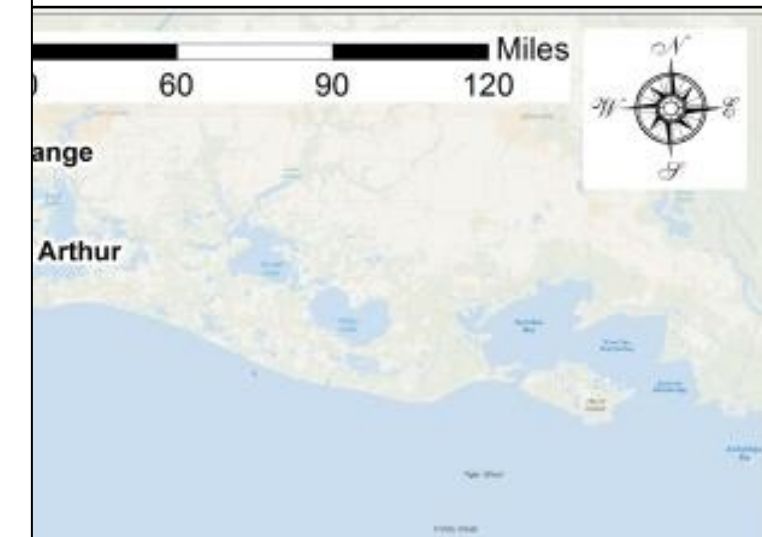
- First engineer district in Texas, established 1880
- 50,000 square mile district boundary, ~100+ miles inland
- 16 Congressional districts
- 48 Texas counties, Louisiana parishes
- 18 Coastal counties - bays / estuaries
- 9 coastal basins

USACE Central Civil Works missions:

- Navigation (NAV)
- Flood Risk Management (FRM)
- Coastal Storm Risk Management (CSRM)
- Ecosystem Restoration (ER)



PROJECTS & STUDIES



Authorization

Public Law 110-114
110th Congress

An Act

To provide for the conservation and development of water and related resources, to authorize the Secretary of the Army to construct various projects for improvements to rivers and harbors of the United States, and for other purposes.

SECTION 1. SHORT TITLE
This Act may be cited as the "Water Resources Development Act of 2007"

Appropriation

Public Law 113-76
113th Congress

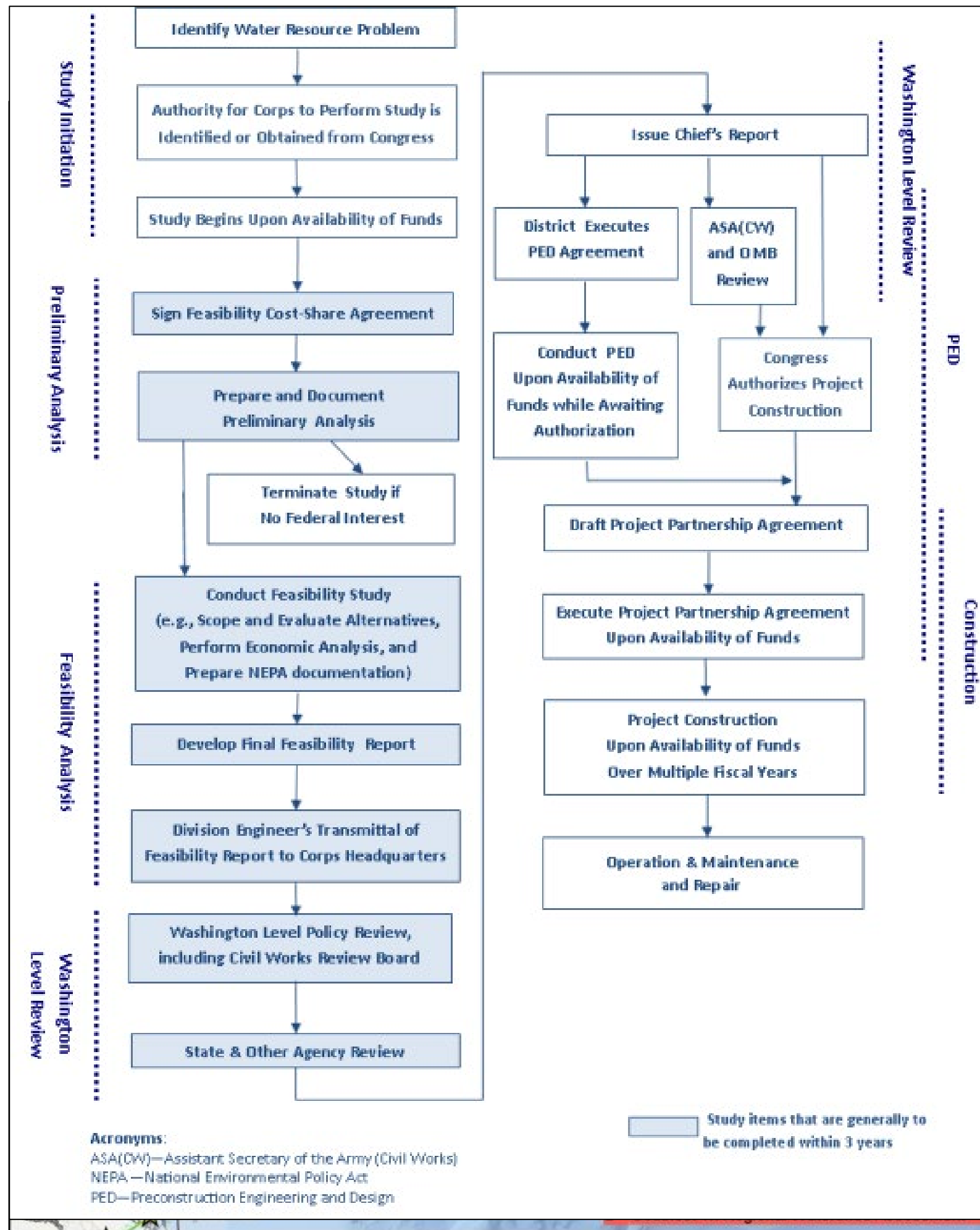
An Act

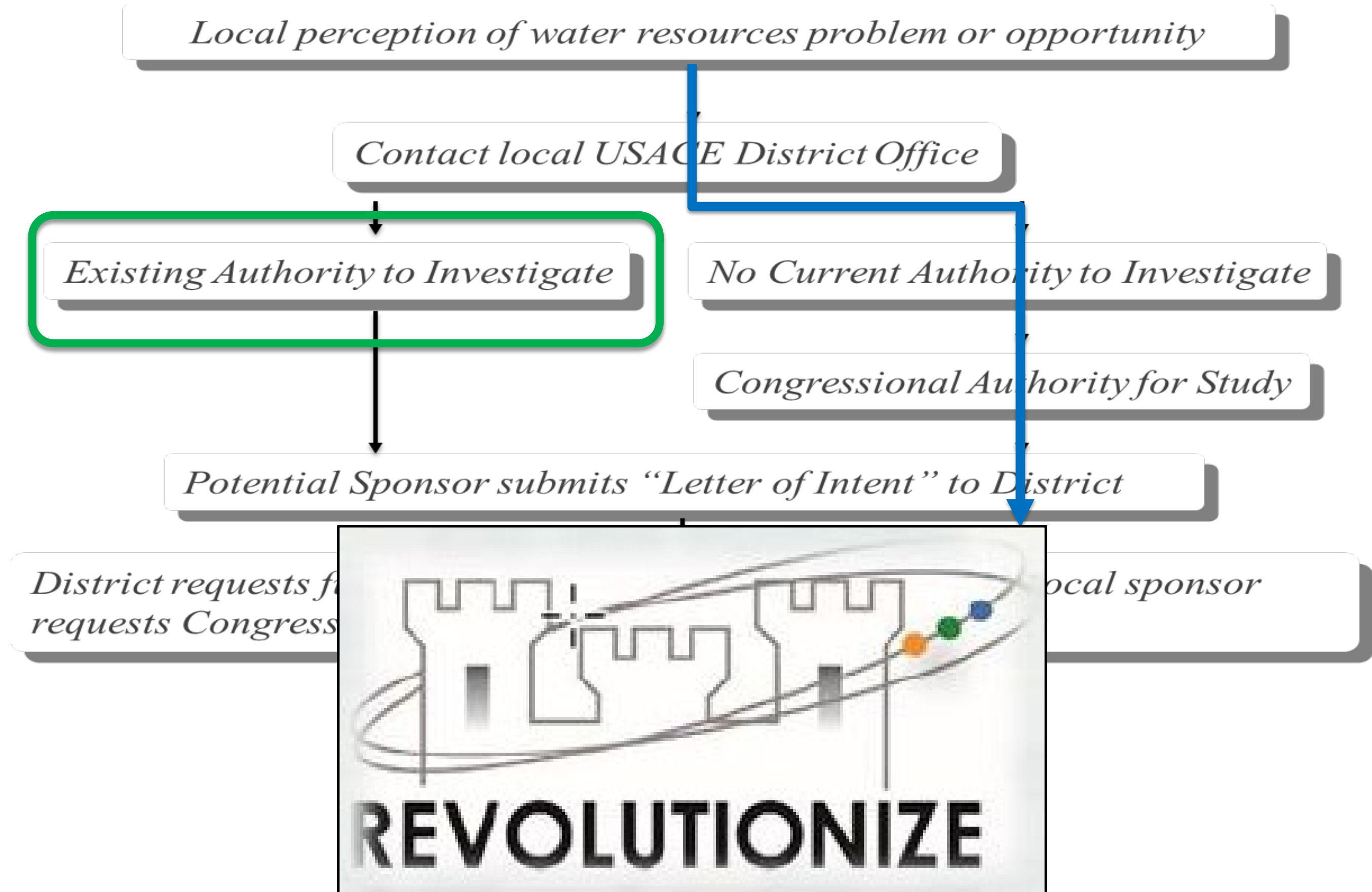
Making consolidated appropriations for the fiscal year ending September 30, 2014, and for other purposes

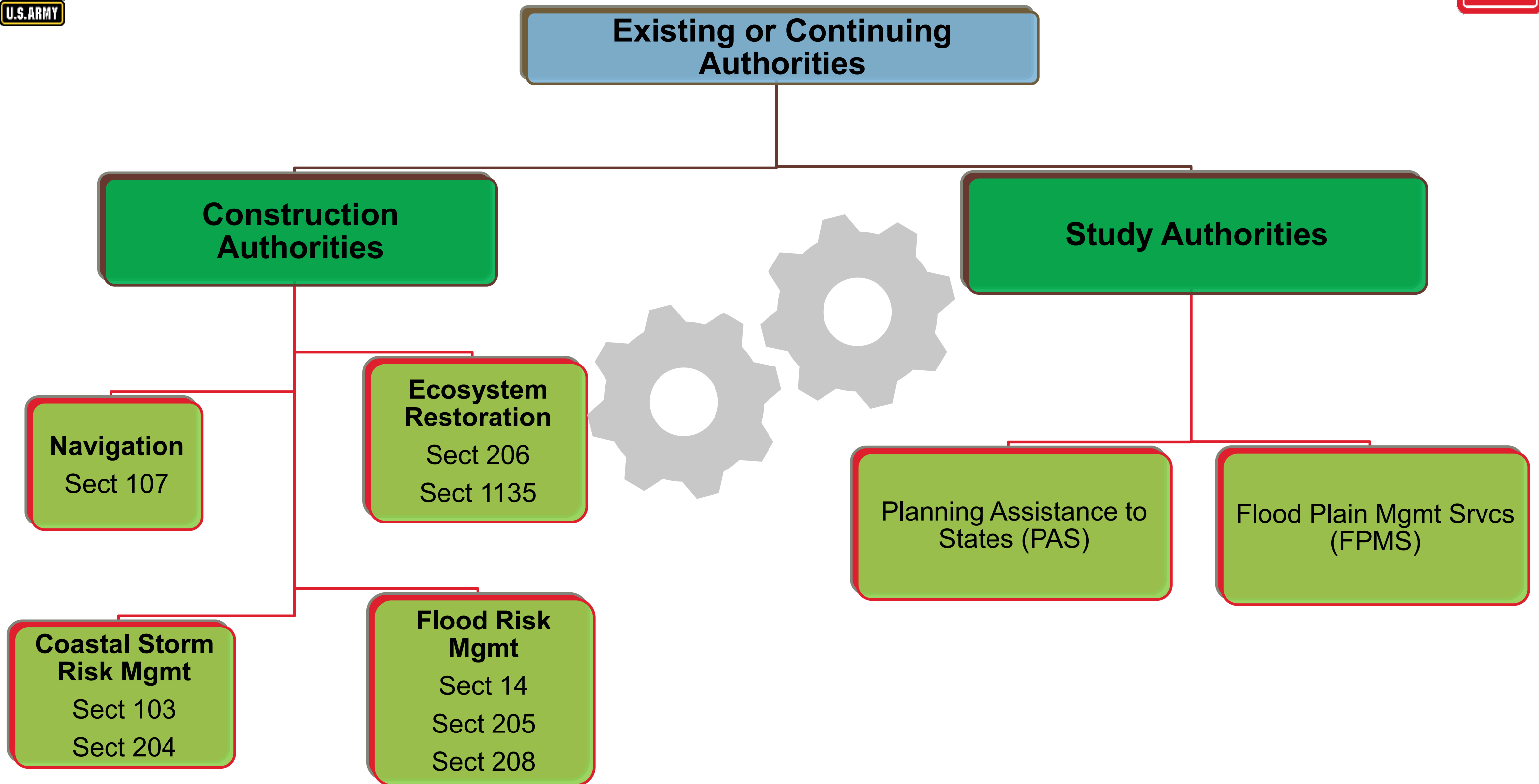
SECTION 1. SHORT TITLE.
This Act may be cited as the "Consolidated Appropriations Act, 2014".

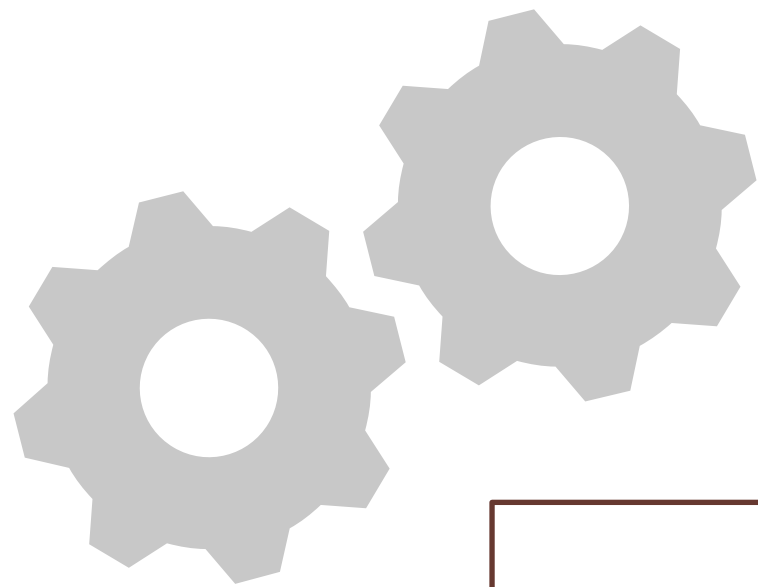
DIVISION D—ENERGY AND WATER DEVELOPMENT APPROPRIATIONS ACT, 2014

Appropriations			
	290	10/TBD	65/35
	52	3/TBD	90/10
	131	5/TBD	75/25
	174	6/TBD	75/25
	417	5/TBD	Varies
project	1359	7/TBD	75/25
	285	5/TBD	Varies
	372	5/TBD	Varies
Authorization			
Mgmt Study	3861	10/TBD	65/35
	17	2/TBD	75/25
	3	3/TBD	75/25









Study Authorities

Planning Assistance to States (PAS)

Cost Share 50:50

- Water Supply and Demand Studies
- Water Quality Studies
- Environmental Restoration Studies
- Wetlands Evaluation Studies
- Dam Safety/Failure Studies
- Flood Damage Reduction Studies
- Flood Plain Management Studies
- Coastal Zone Management Studies
- Harbor/Port Studies

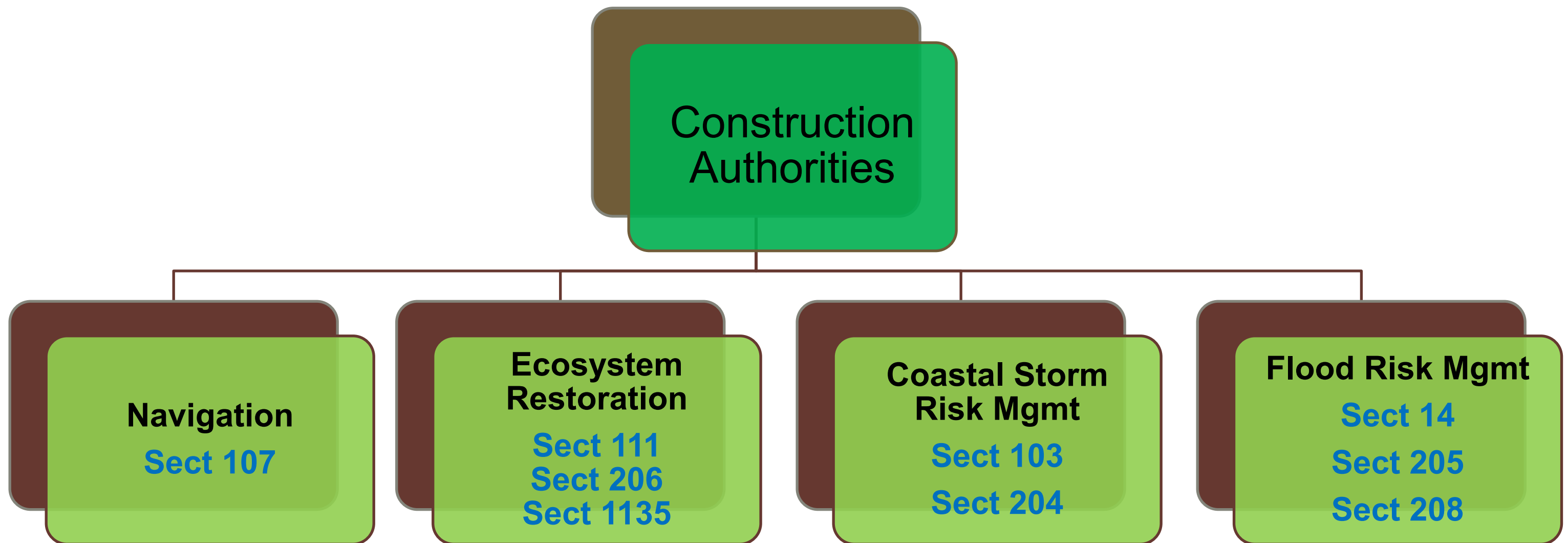
Flood Plain Mgmt Srvcs (FPMS)

100% Federal

- Floodplain Delineation/Flood Hazard Eval Studies
- Dam Break Analysis Studies
- Flood Warning/Preparedness Studies
- Regulatory Floodway Studies
- Comprehensive Floodplain Management Studies
- Urbanization Impact Studies
- Storm Water Management Studies
- H&H and Sediment Transport Modeling



Purpose of Continuing Authorities Program (CAP) is to plan and implement projects of limited size, cost, scope, and complexity in an accelerated manner



- Requested by the Sponsor
- Do not need Congressional Authorization
- Are not competing with GI for Prioritization

- Quicker to implement
- Limited Scope & Complexity
- Pre-established Federal Cost limits



CAP Selection Process



Districts
(Feb)

Division

HQ/ASA

Affordability Analysis

20%

80%

New Start

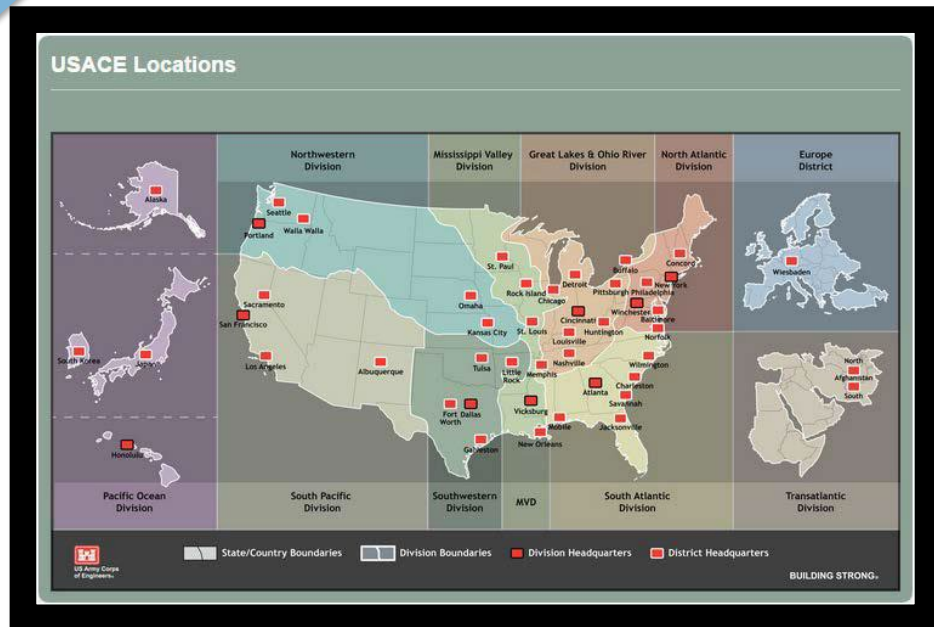
Studies

Construction

Construction

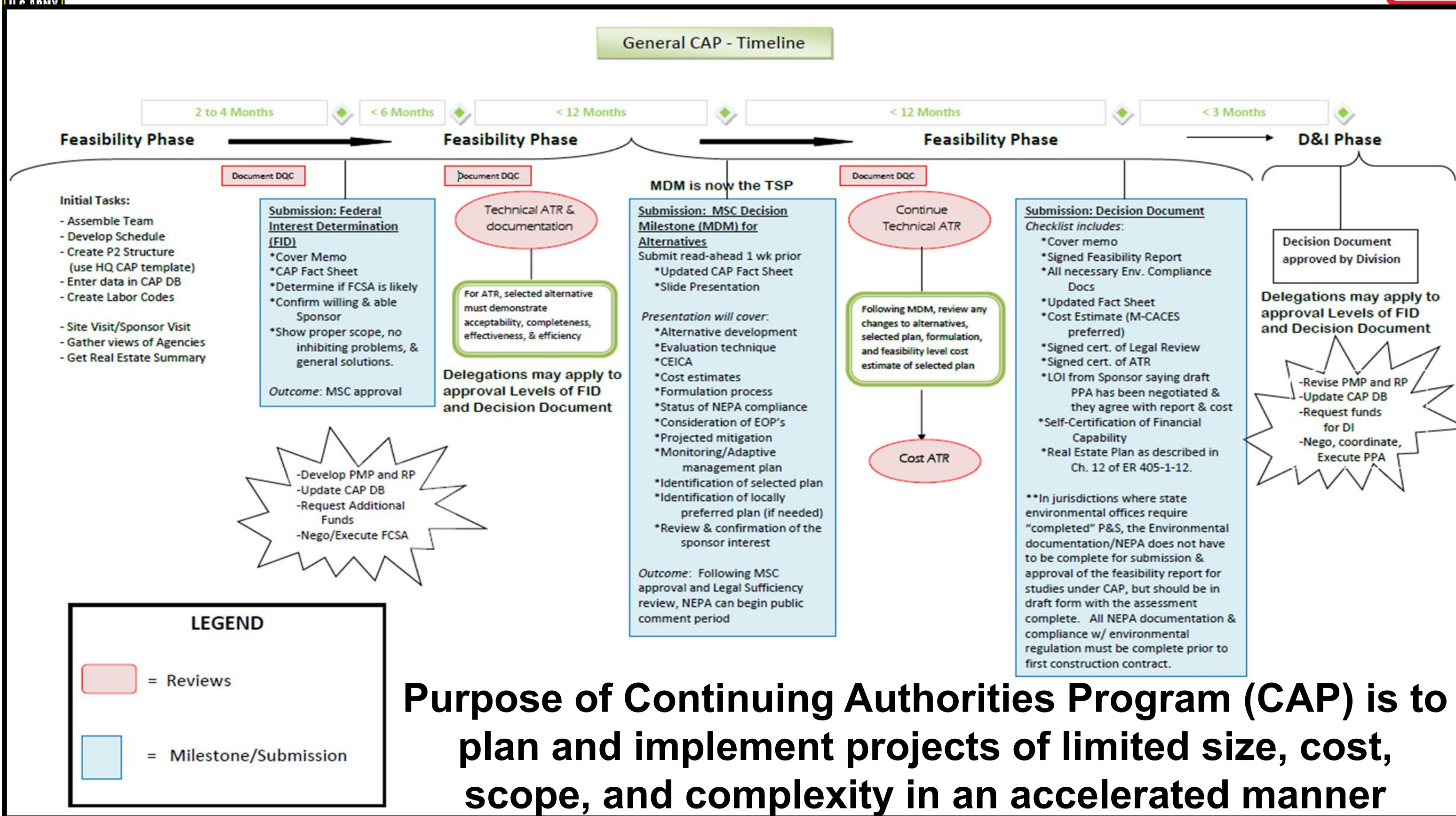
Construction

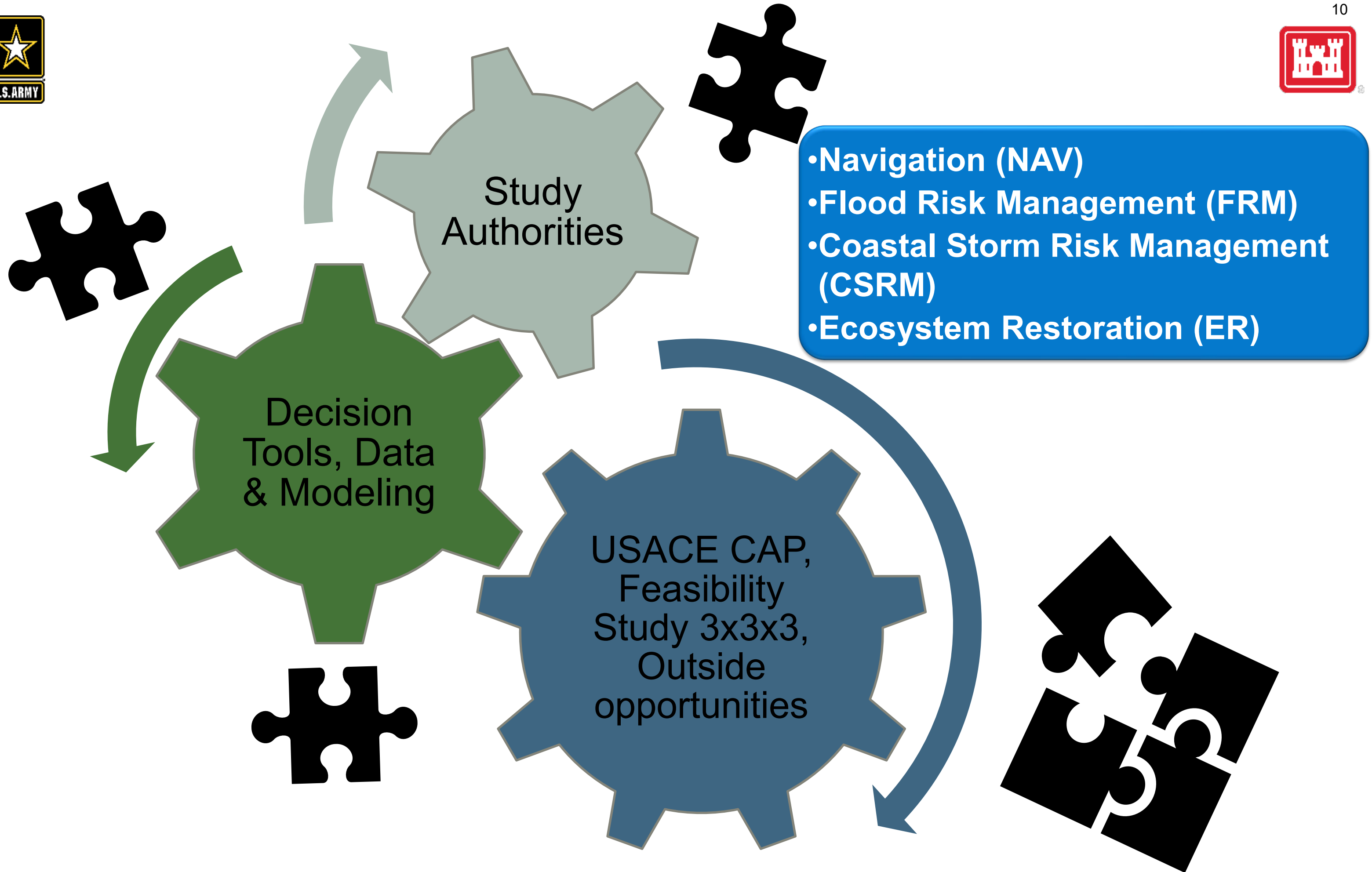
Construction





U.S. ARMY

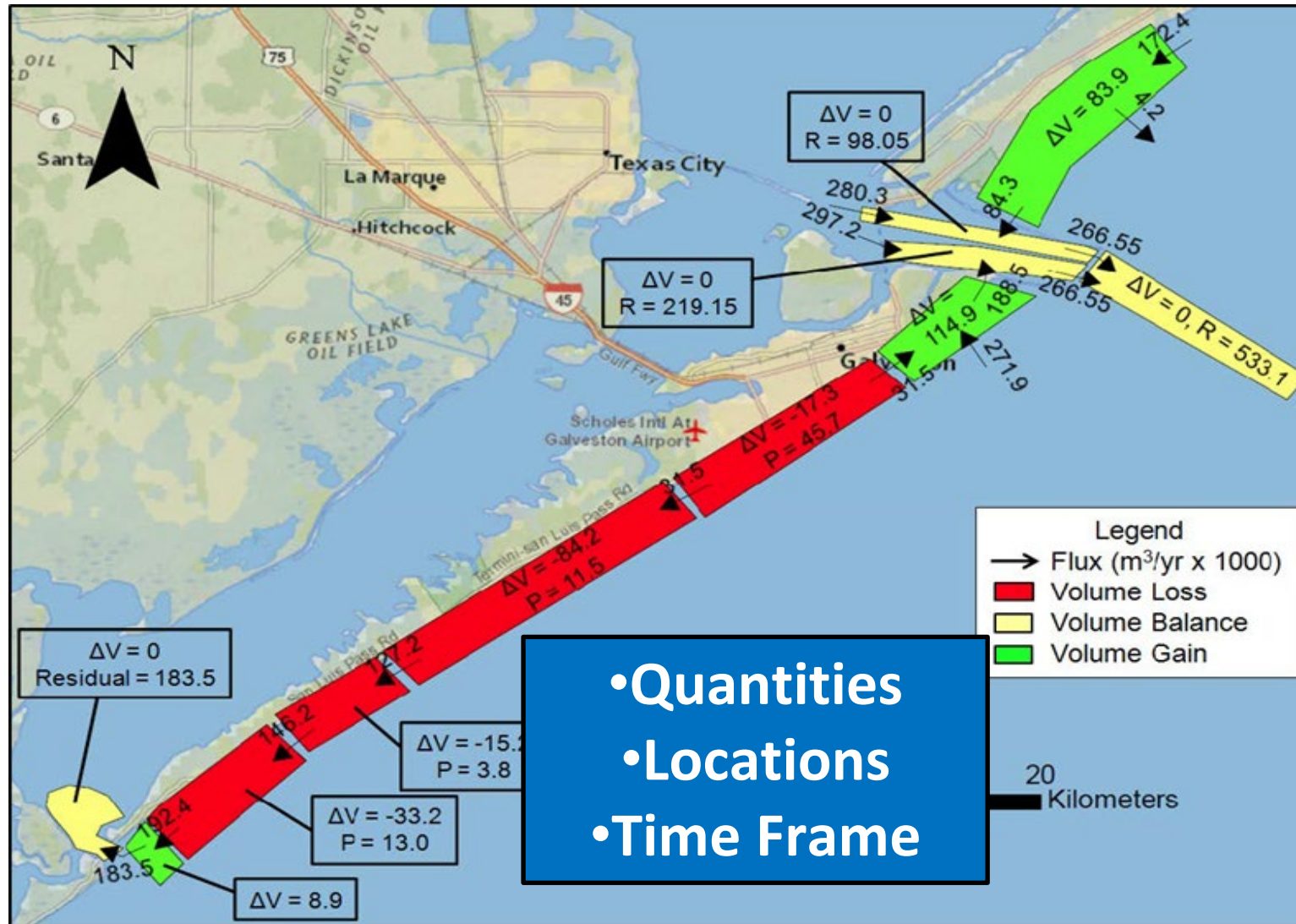






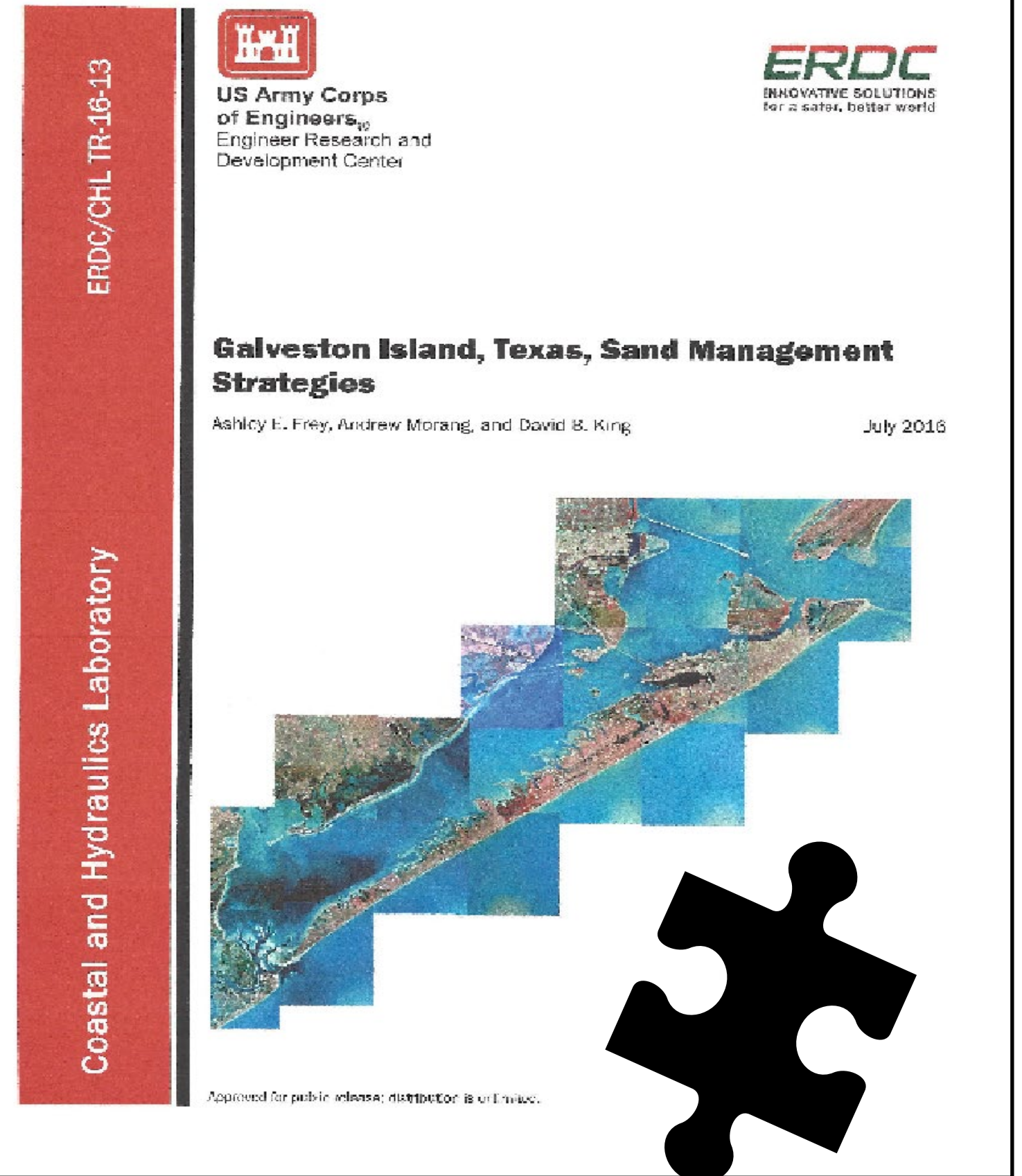
COASTAL STORM RISK MANAGEMENT ON GALVESTON ISLAND

11



Guiding Principles:

1. Retain sediment in the system utilizing Regional Sediment Management (RSM) concepts
2. Defend what has been built, continual maintenance
3. Seek opportunities to conduct large scale nourishment projects





COASTAL STORM RISK MANAGEMENT ON GALVESTON ISLAND



Construction Activities:

- 5 beach projects
- ~2.5 mill CY's of sand back on beaches
- Leveraged city financial resources with state and federal support

Additional Studies:

- Backpassing Technology to reduce price of sand.
- Structural Solution to mitigate erosion at end of the Seawall. Conceptual design to be finalized and constructed through FEMA HZM Project.

CAP Sect 204 to address West End erosion in Feasibility phase.



Babe's Beach



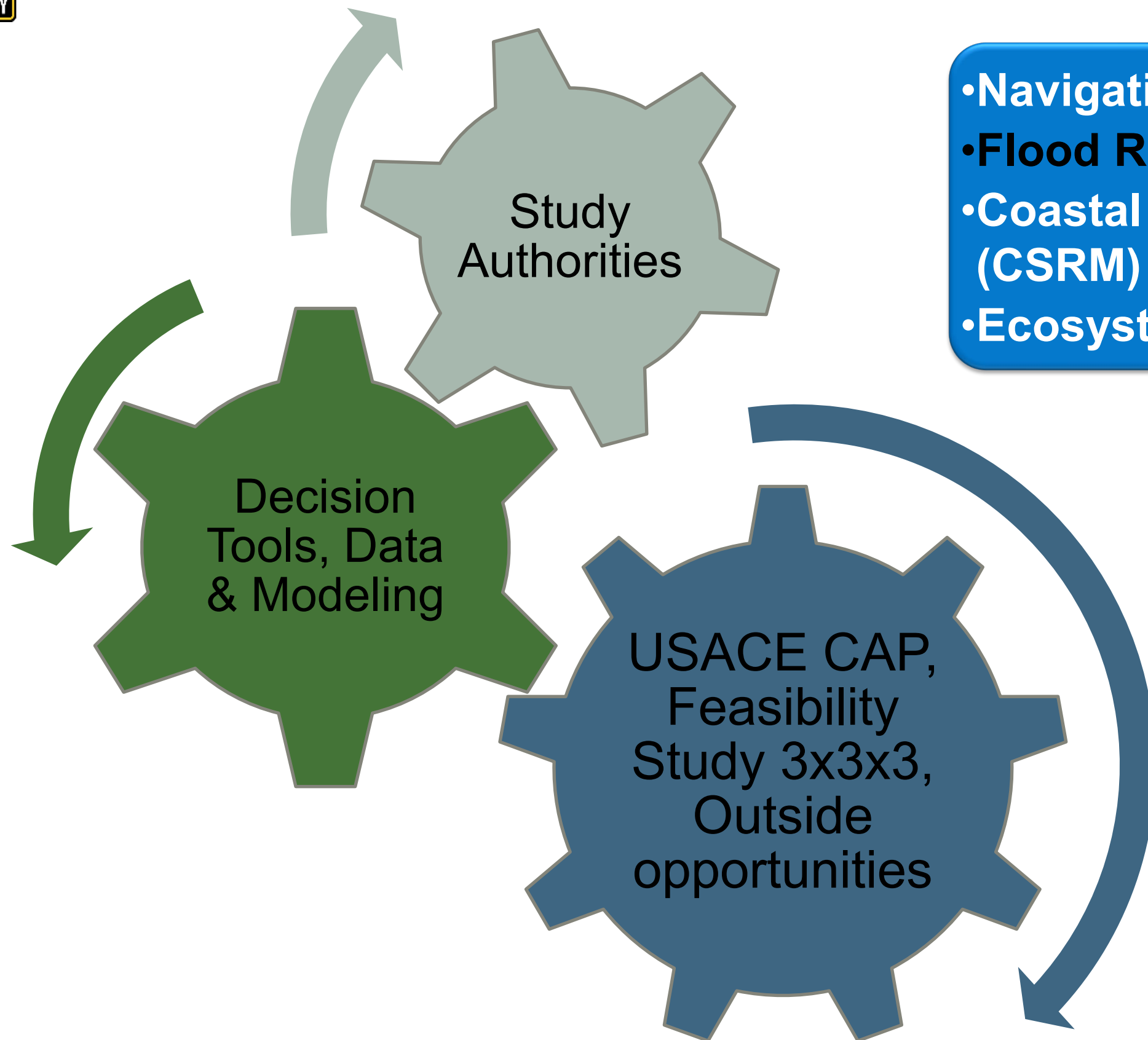
West of Seawall



TEXAS SEDIMENT MGMT. PLAN'S



County	Status
Jefferson	-
Galveston	Partial
Brazoria	Pending
Matagorda	Pending
Calhoun	-
Aransas	-
Nueces	Pending
Kleberg	-
Kenedy	-
Willacy	Pending
Cameron	On-Going



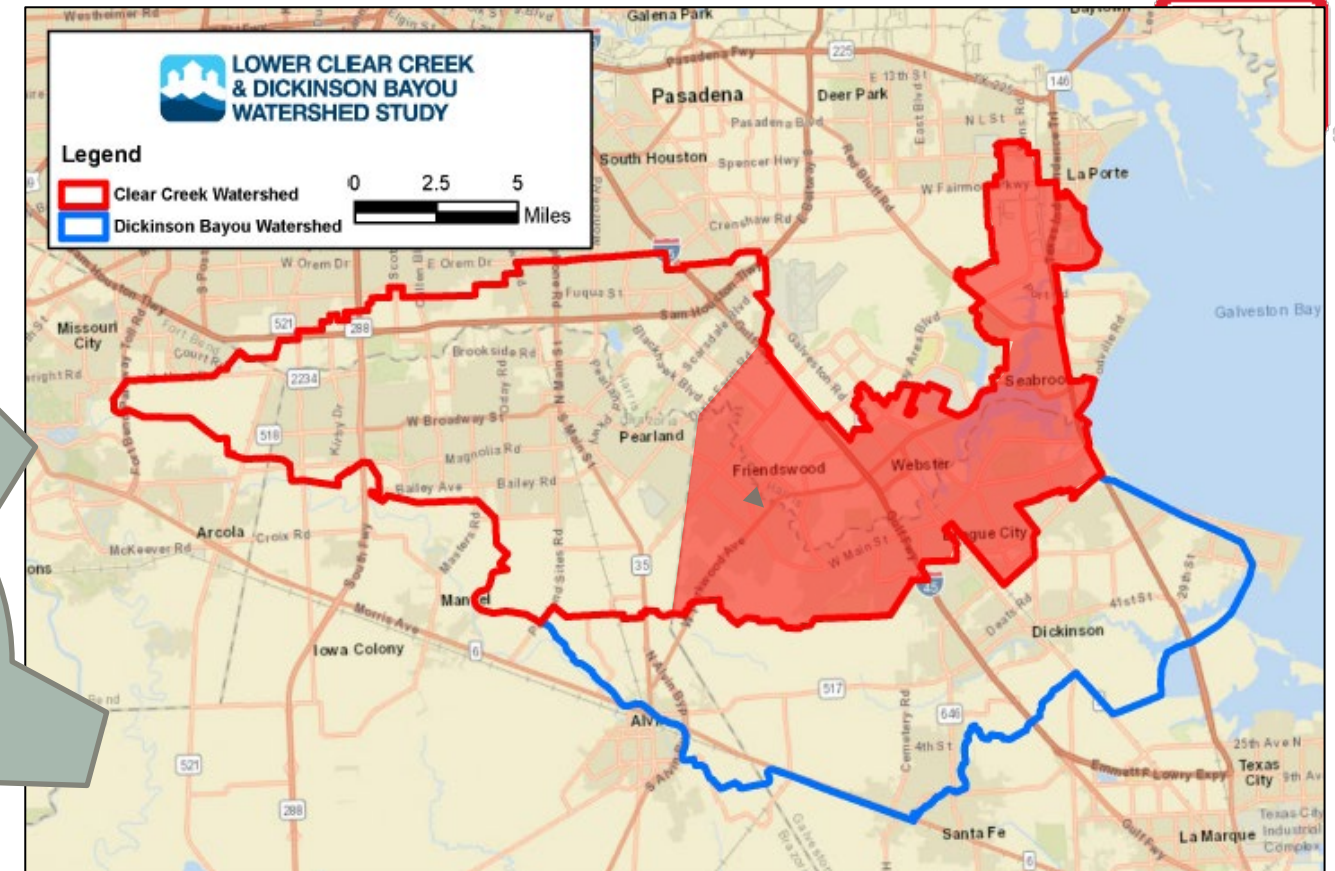
- **Navigation (NAV)**
- **Flood Risk Management (FRM)**
- **Coastal Storm Risk Management (CSRM)**
- **Ecosystem Restoration (ER)**



LOWER CLEAR CREEK & DICKINSON BAYOU WATERSHED STUDY



270 High Water Bypass



PAS
&
FPMS

Compound
Flooding Models
as part of larger
watershed effort

PAS Flood
Damage Study
by improving
existing model

Feasibility Study

CAP Sect 205
\$15 mill bypass
\$10 mill
detention basin



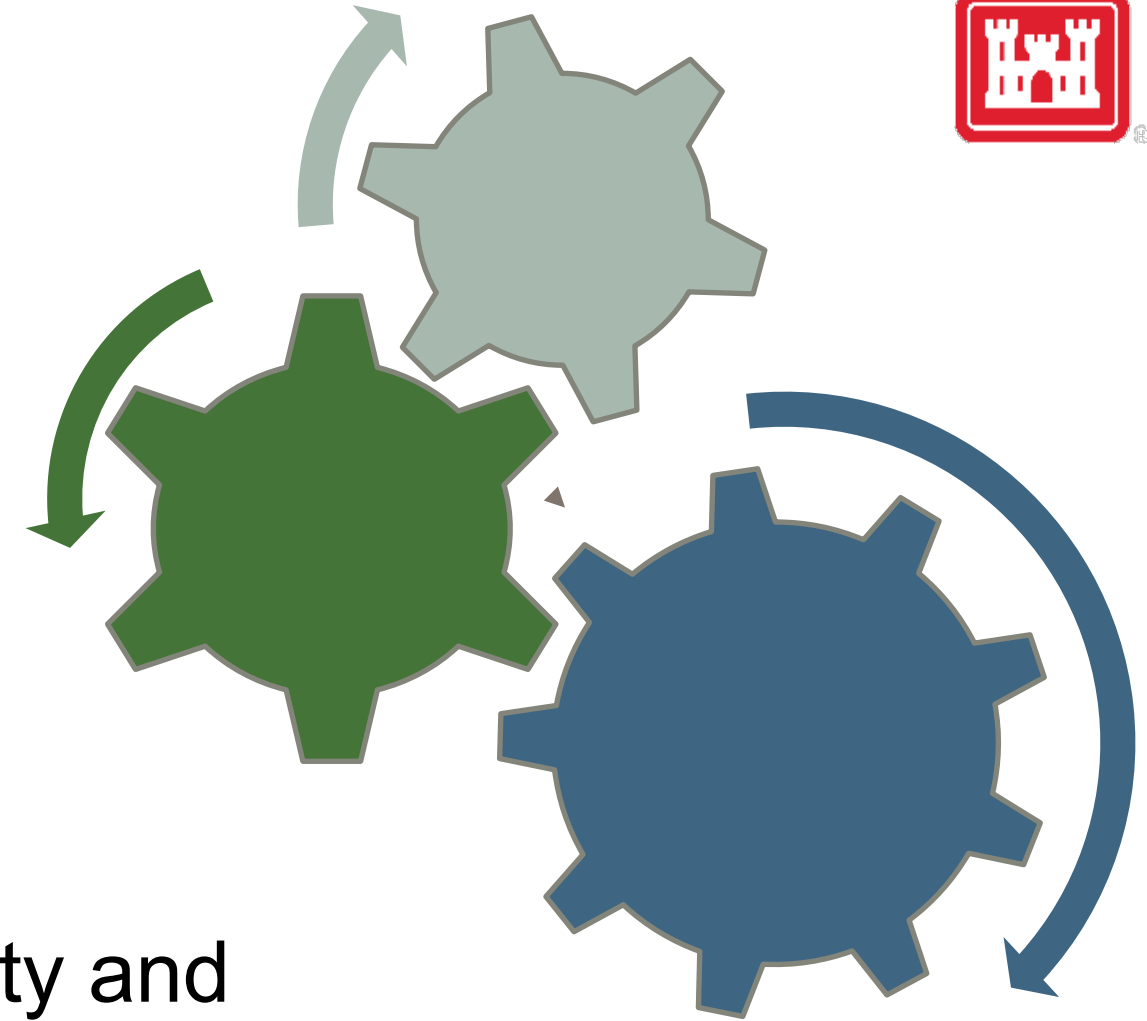
Types projects being evaluated:

- Detention basins
 - New
 - Extensions of existing
- Bypass Channels
- Tunnels
- Channel widening
- Diversion pipes



Next Steps:

- Reach out & Setup a conference call or site visit
 - Reuben.Trevino2@usace.army.mil
 - 409-926-1329
- Identify a path forward through a Continuing Authority and submit a Letter of Intent (LOI):
 - PAS is available year-round depending on funding availability
 - CAP requests will be submitted for FY 23 consideration next Spring



- Navigation (NAV)
- Flood Risk Management (FRM)
- Coastal Storm Risk Management (CSRM)
- Ecosystem Restoration (ER)