

# Beneficial Use of Dredged Material in the Galveston District

**Alicia Rea**

Operations Manager

U.S. Army Corps of Engineers

Galveston District

*Galveston District*

*Custodians of the Coast*



®

US Army Corps of Engineers  
**BUILDING STRONG**®



# Galveston District Beneficial Use Project Locations



***Galveston District – Custodians of the Coast***



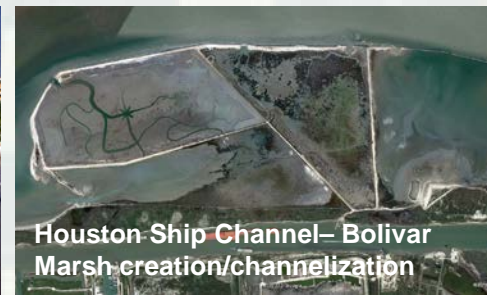
**BUILDING STRONG®**

# Galveston District Beneficial Use Statistics

	FY 10	FY 12	FY 13
<b>Total Amount Dredged</b>	24,500,000	20,000,000	20,500,000
<b>Total Amount Used for BU</b>	4,000,000	3,200,000	4,300,000
<b>Percent Beneficial Use</b>	~16%	~16%	~20%



# Notable Galveston District Beneficial Use Projects



**Galveston District – Custodians of the Coast**



**BUILDING STRONG®**

# Houston Ship Channel—Upper Galveston Bay



Aerial of Existing Atkinson Island marsh cells and new cells currently under construction (M7/8/9,&10)



# Houston Ship Channel—Upper Galveston Bay

Atkinson Island marsh cell under construction



© 2012 Google

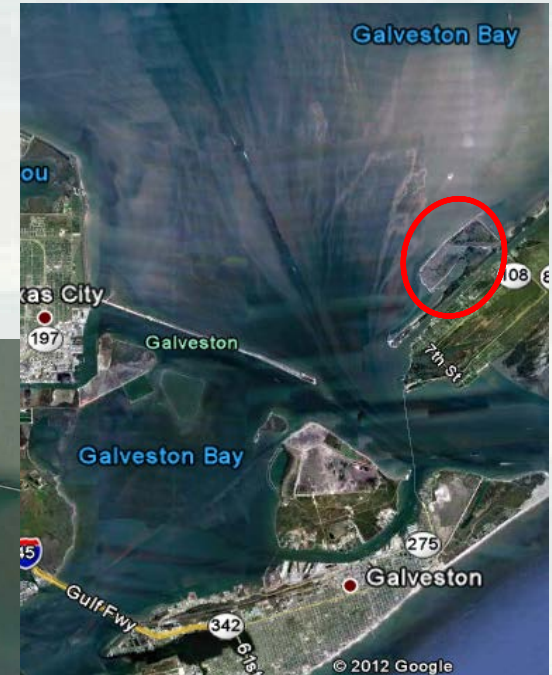
Google

©2010 Google

**BUILDING STRONG®**

# Houston Ship Channel—Lower Galveston Bay

Bolivar Marsh—  
Channelization and  
Marsh Creation (ongoing)



***Galveston District—Custodians of the Coast***



**BUILDING STRONG®**

# Houston Ship Channel—Lower Galveston Bay

## Bolivar Marsh—Marsh Creation



**Galveston District – Custodians of the Coast**



**BUILDING STRONG®**



# Neches River Channel (Sabine-Neches Waterway) Bessie Heights Marsh



## Marsh Creation

Channels form shortly after pumping of dredged material into open water area



Established 28 acres of marsh one year later

*Galveston District – Custodians of the Coast*



**BUILDING STRONG®**

# Texas City Channel



Aero  
Photo

727.520.8181  
www.aerophoto.com

Texas City Channel

Image # 110524 6037  
Date 05.24.11

Construction of containment levees for Beneficial Use Site

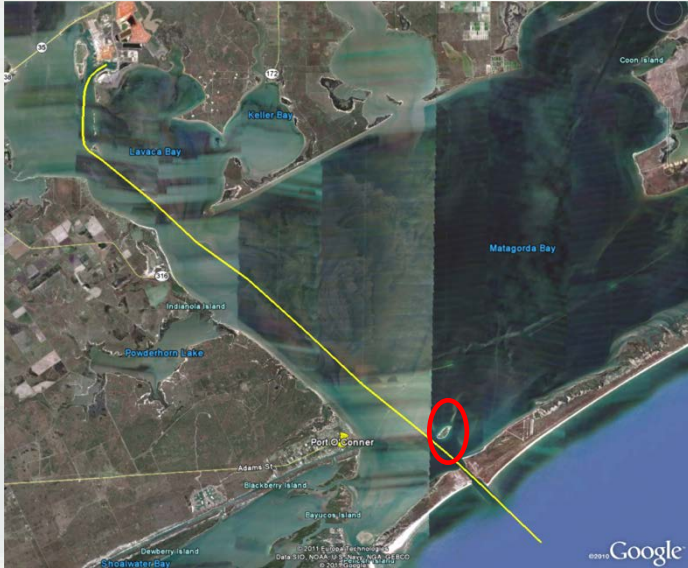
***Galveston District – Custodians of the Coast***



**BUILDING STRONG®**

# Matagorda Ship Channel--Sundown Island

Nourishment along eroded areas



**Galveston District – Custodians of the Coast**



**BUILDING STRONG®**

# Chocolate Bayou

Construction of  
Beneficial Use Sites



**Galveston District – Custodians of the Coast**



**BUILDING STRONG®**

# GIWW-Aransas National Wildlife Reserve



BUS B, construct breakwater



BUS A



BUS D



BUS J

Galveston District – Custodians of the Coast



BUILDING STRONG®

# Gulf Intracoastal Waterway Beneficial Use Projects

## Beach Nourishment

Little Beach



Rollover



# GIWW- West Bay Mooring BU Site

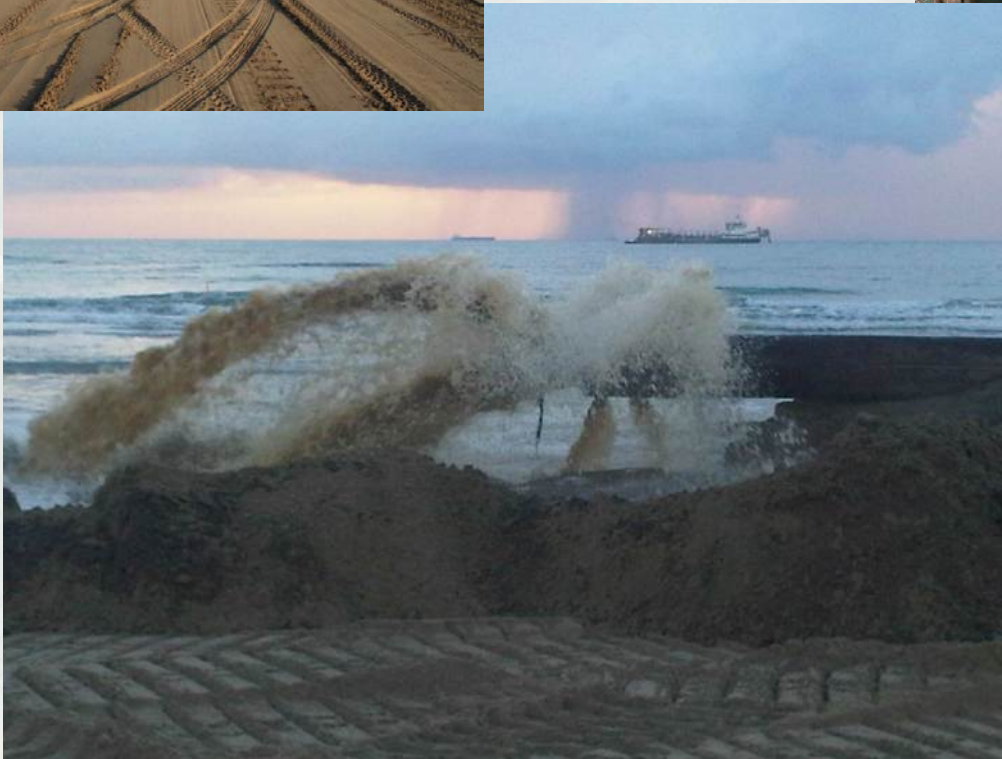


***Galveston District – Custodians of the Coast***



**BUILDING STRONG®**

# Brazos Island Harbor Beach Nourishment



***Galveston District – Custodians of the Coast***



**BUILDING STRONG®**



# Mouth of the Colorado River

## Beach Nourishment



***Galveston District – Custodians of the Coast***



**BUILDING STRONG®**

# How is SWG trying to increase BU?

- Actively identify projects
- Re-evaluate our DMMPs
- Work with the RSM program
- Bring together Corps and Resource Agencies

