

FY-13 Scheduled & FY-14 Planned Dredging and Placement Area Construction Contracts

Christopher Frabotta

Deputy Chief, Operations Division /

Chief, Navigation Branch

Southwestern Division - Galveston District

November 6, 2012

***Galveston District – 2012 Beneficial Use of Dredged
Material Workshop***

Custodians of the Coast



®

US Army Corps of Engineers
BUILDING STRONG®



SWG - Galveston District



OPERATIONS MANAGERS

Paula Wise

Alicia Rea

Tricia Campbell

Eddie Irigoyen



BUILDING STRONG®

Corpus Christi Ship Channel Sabine-Neches Waterway Texas City Channel

Paula Rankin Wise

Operations Manager

Navigation Branch

November 6, 2012

*Galveston District – 2012 Beneficial Use of Dredged
Material Workshop*

Custodians of the Coast



®

US Army Corps of Engineers
BUILDING STRONG®



Paula Wise Operations Manager



Corpus Christi Ship Channel
Sabine-Neches Waterway
Texas City Channel

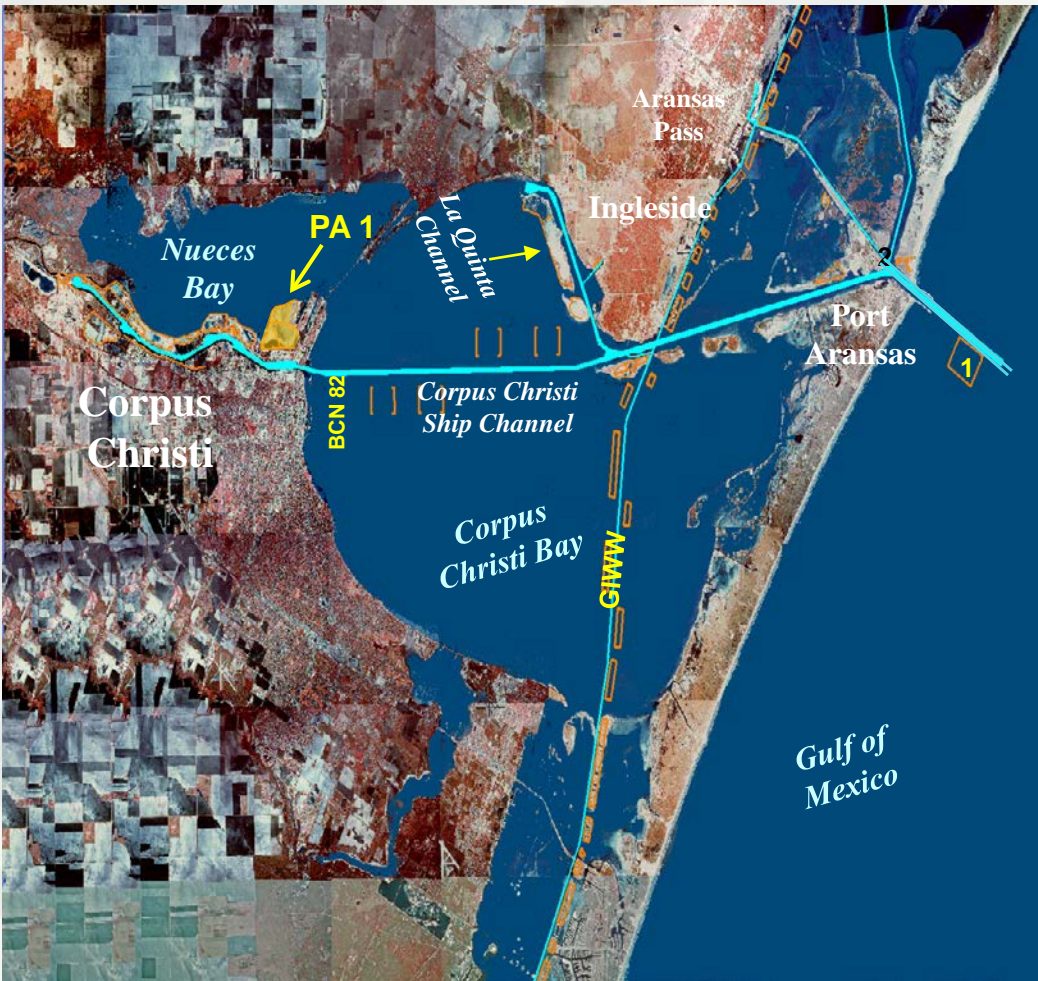
*Cedar Bayou
Trinity River & Tributaries
Double Bayou
Clear Creek & Clear Lake
Dickinson Bayou*



FY 2013 Contracts

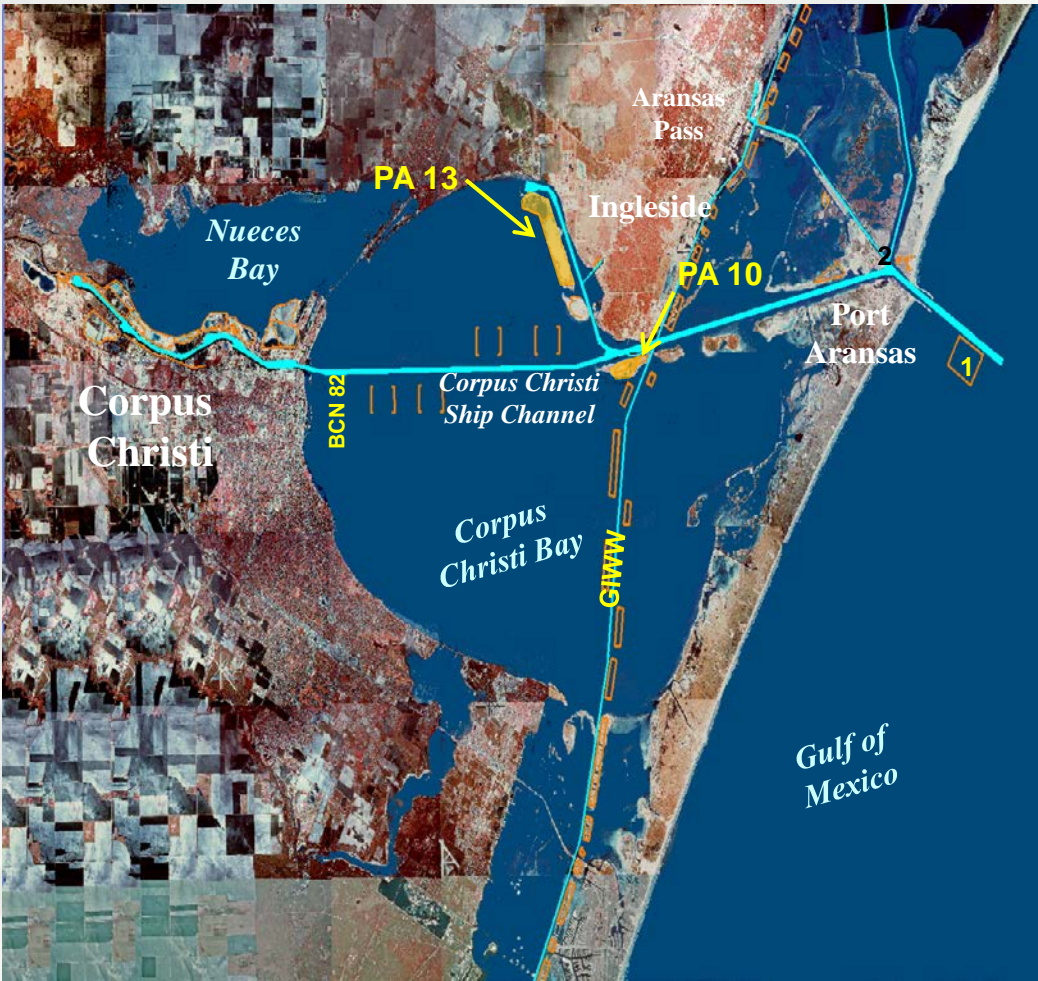
Corpus Christi Ship Channel





Project:	Corpus Christi Ship Channel PA 1 Levee Raising / DAMP
Type of Work:	Levees / Dewatering
Placement Area:	PA 1
Type of Equipment:	Bull dozers; Excavators, marsh buggies
Est. Start Date:	September 2013





Project:	Corpus Christi Ship Channel PA 10 /13 Rock Stabilization
Type of Work:	Improvements
Placement Area:	PA 10; PA 13
Type of Equipment:	Bull dozers; Excavators
Est. Start Date:	October 2013



FY 2014 Contracts

Corpus Christi Ship Channel





Project:	Corpus Christi Ship Channel Entrance / Jetty Channel
Dredging Quantity:	900,000 cubic yards
Material Type:	Silt/Sand
Placement Area:	Offshore
Distance to Placement Area:	2.5 Mile Avg.
Type of Equipment:	Hopper Dredge
Env. Window:	Dec. 1 thru Mar. 31
Reason for Window:	Sea Turtles
Award:	2 nd Quarter





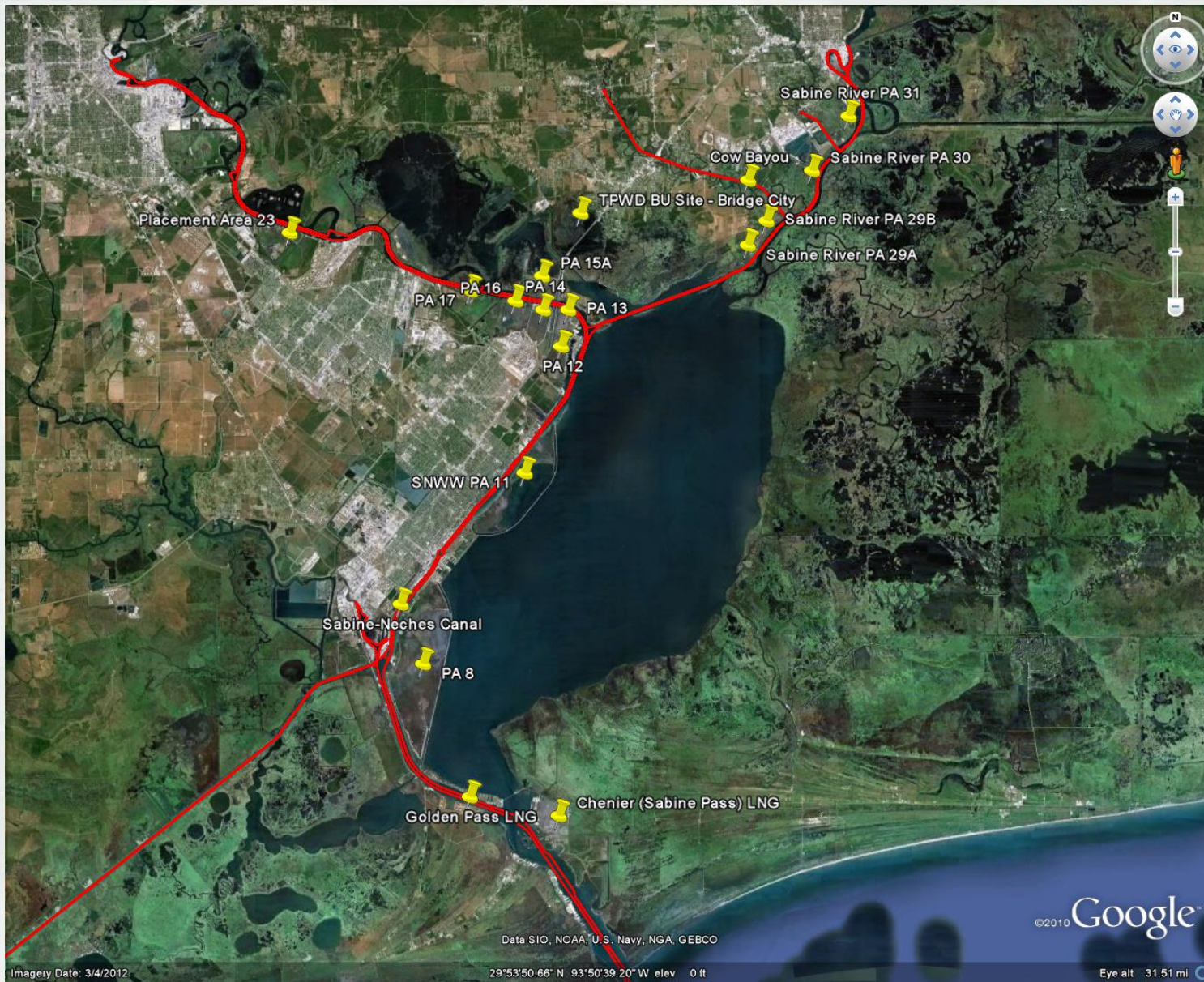
Project:	Corpus Christi Ship Channel Inner Basin to Main Turning Basin
Dredging Quantity:	2,500,000 cubic yards
Material Type:	Silt/Sand
Placement Area:	Open Water/Upland
Distance to Place Area:	1 Mile Avg.
Type of Equipment:	Pipeline Dredge
Env. Window:	Sept. – Mar.
Reason for Window:	Turtles and Nesting Birds
Award:	3 rd Quarter



FY 2013 Contracts

Sabine-Neches Waterway





Galveston District – 2012 BUDM Workshop

Custodians of the Coast



BUILDING STRONG®



Project:	Sabine-Neches Waterway Outer Bar and Bank Channel
Dredging Quantity:	2,500,000 cubic yards
Material Type:	Silt/Clay
Placement Area:	Offshore
Distance to Placement Area:	3 Mile Avg.
Type of Equipment:	Hopper Dredge
Env. Window:	Dec 1 – Mar 31
Reason for Window:	Sea Turtles
Est. Start Date:	September 2013





Project:	Sabine-Neches Waterway Neches River
Dredging Quantity:	2,500,000 cubic yards
Material Type:	Silt/Clay
Placement Area:	Various Upland PAs
Type of Equipment:	Pipeline Dredge
Est. Start Date:	September 2013



FY 2014 Contracts

Sabine-Neches Waterway





Project:	Sabine-Neches Waterway Port Arthur Canal, Turning Basin, Junction Area and Taylors Bayou
Dredging Quantity:	2,500,000 cubic yards
Material Type:	Silt/Clay
Placement Area:	PA 8 and PA 9
Distance to Place Area:	1.5 - 2 Miles Avg.
Type of Equipment:	Pipeline Dredge
Award:	1 st Quarter





Project:	Sabine-Neches Waterway Outer Bar and Bank Channel
Dredging Quantity:	3,000,000 cubic yards
Material Type:	Silt/Clay
Placement Area:	Offshore
Distance to Placement Area:	3 Mile Avg.
Type of Equipment:	Hopper Dredge
Env. Window:	Dec. 1 thru Mar. 31
Reason for Window:	Sea Turtles
Award:	3 rd Quarter





Project:	Sabine-Neches Waterway Sabine Pass Channel
Dredging Quantity:	2,000,000 cubic yards
Material Type:	Silt/Sand
Placement Area:	PA 5A, 5B and 5C
Distance to Place Area:	3.5 Mile Avg.
Type of Equipment:	Pipeline Dredge
Award:	4 th Quarter



FY 2013 Contract Texas City Channel





Project:	Texas City Channel DAMP of Placement Area 5&6
Type of Work:	Dewatering
Placement Area:	PA 5&6
Type of Equipment:	Excavators; Dozers; Marsh Buggy
Est. Start Date:	October 2013



FY 2014 Contract Texas City Channel





Project:	Texas City Channel Main Channel and Turning Basin
Dredging Quantity:	2,000,000 cubic yards
Material Type:	Silt/Sand
Placement Area:	PA 5/6; SPPA's 3, 4, 5
Distance to Place Area:	1 Mile Avg.
Type of Equipment:	Pipeline Dredge
Award:	4 th Quarter



Questions Comments?



For more information, contact:

Paula Rankin Wise
Operations Manager

Navigation Branch, Operations Division
U.S. Army Corps of Engineers, Galveston

409-766-3948

paula.r.wise@usace.army.mil



Brazos Island Harbor Gulf Intracoastal Waterway, TX Matagorda Ship Channel

Alicia D. Rea

Operation Manager

Navigation Branch

November 6, 2012

*Galveston District – 2012 Beneficial Use of Dredged
Material Workshop*

Custodians of the Coast



®

US Army Corps of Engineers
BUILDING STRONG®



Alicia Rea Operations Manager



Brazos Island Harbor (Brownsville)
Gulf Intracoastal Waterway, TX
Matagorda Ship Channel

*Channel to Port Mansfield
Channel to Port Isabel
Channel to Palacios
Channel to Aransas
Channel to Harlingen
Channel to Port Bolivar*



FY 2013 Contracts Brazos Island Harbor (Brownsville Harbor)





Project:	Brazos Island Harbor Brownsville Ship Channel
Dredging Quantity:	350,000 cubic yards
Material Type:	Silt
Placement Area:	Upland
Distance to Place Area:	1 Mile Avg.
Type of Equipment:	Pipeline Dredge
Est. Start Date:	June 2013





Project:	Brazos Island Harbor Brownsville Jetty Channel
Dredging Quantity:	350,000 cubic yards
Material Type:	Sand
Placement Area:	Beach/BU
Distance to Place Area:	2 Miles Avg.
Type of Equipment:	Hopper/Pipeline Dredge
Env. Window:	Oct-Mar
Reason for Window:	Turtle/Tourism
Est. Start Date:	October 2013

FY 2014 Contract Brazos Island Harbor (Brownsville Harbor)





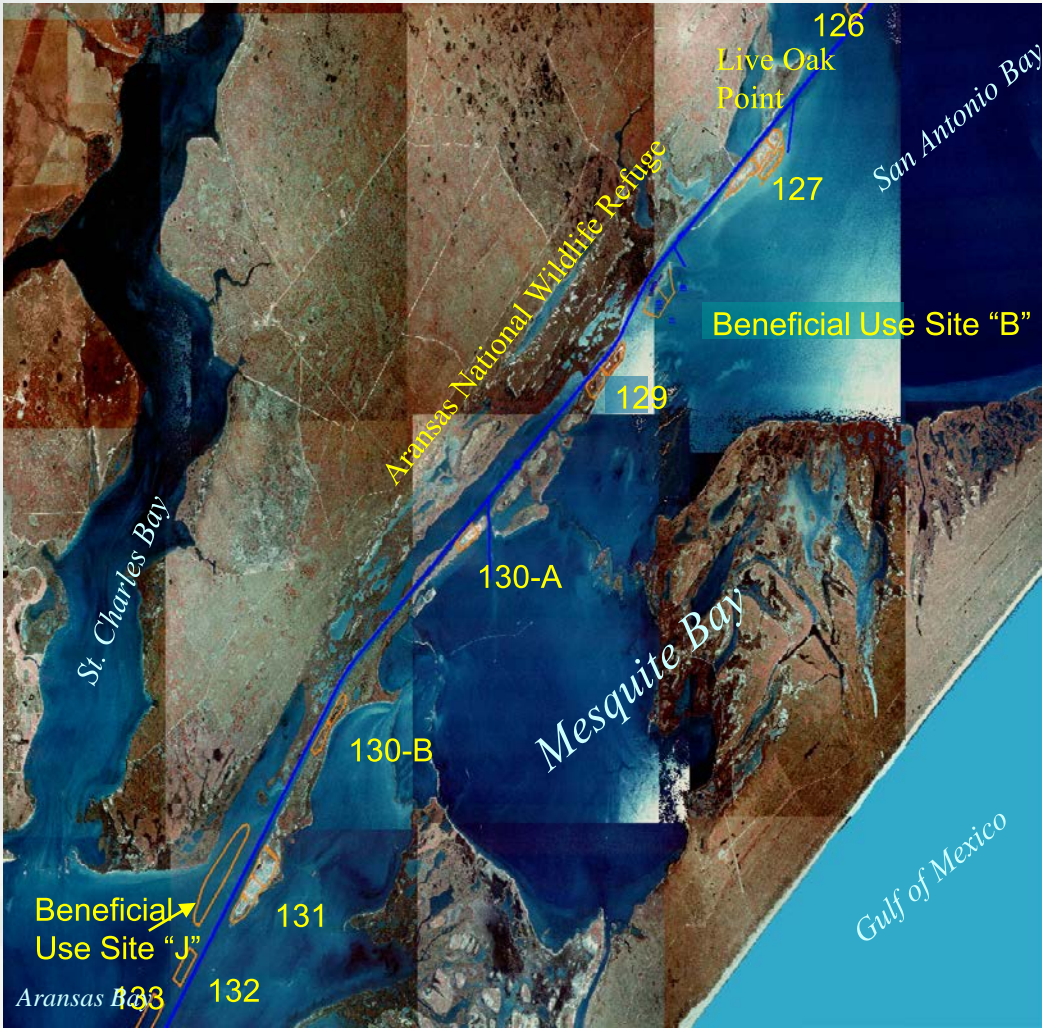
Project:	Brazos Island Harbor Brownsville Jetty Channel
Dredging Quantity:	350,000 cubic yards
Material Type:	Sand
Placement Area:	Beach/BU
Distance to Place Area:	2 Miles Avg.
Type of Equipment:	Hopper/Pipeline Dredge
Env. Window:	Oct-Mar
Reason for Window:	Turtle/Tourism
Award:	4 th Quarter



FY 2013 Contracts

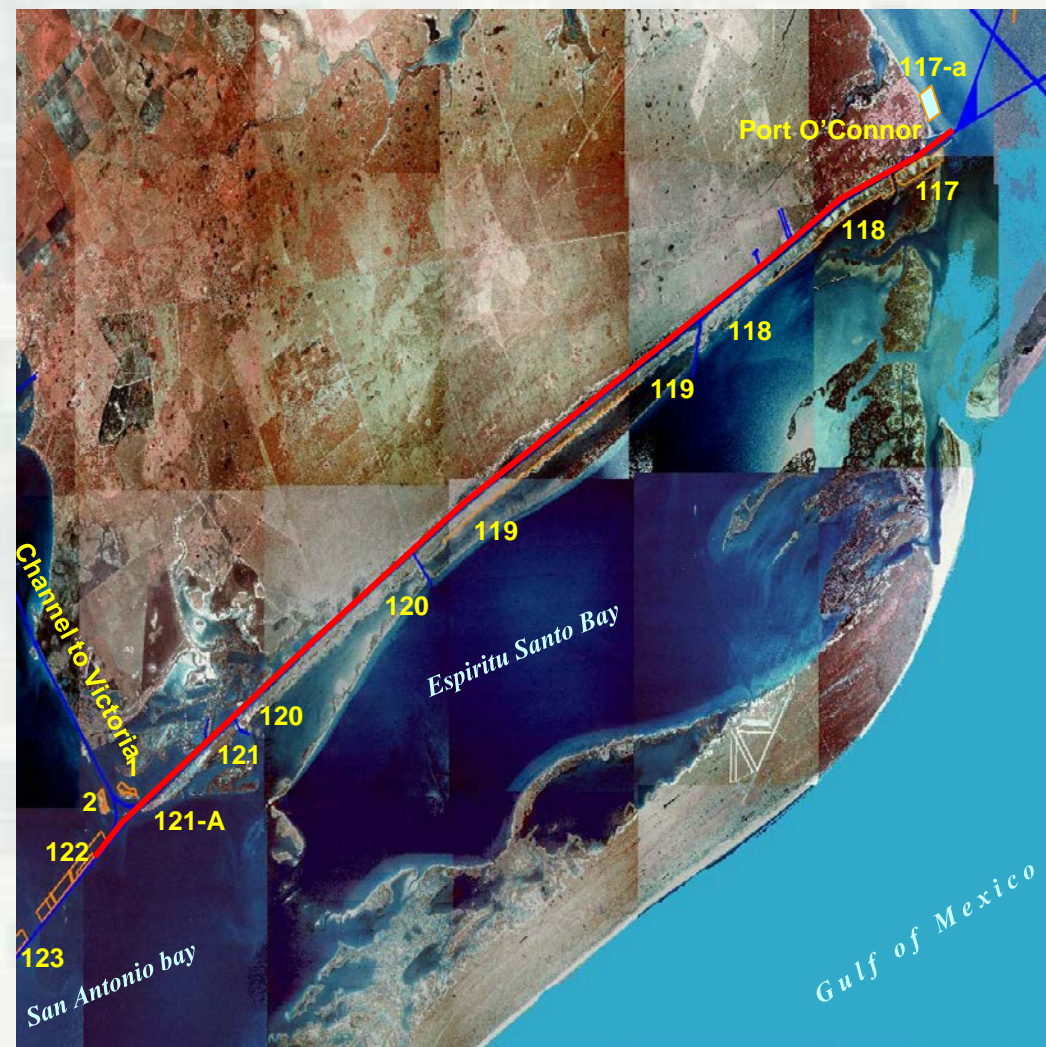
Gulf Intracoastal Waterway, TX





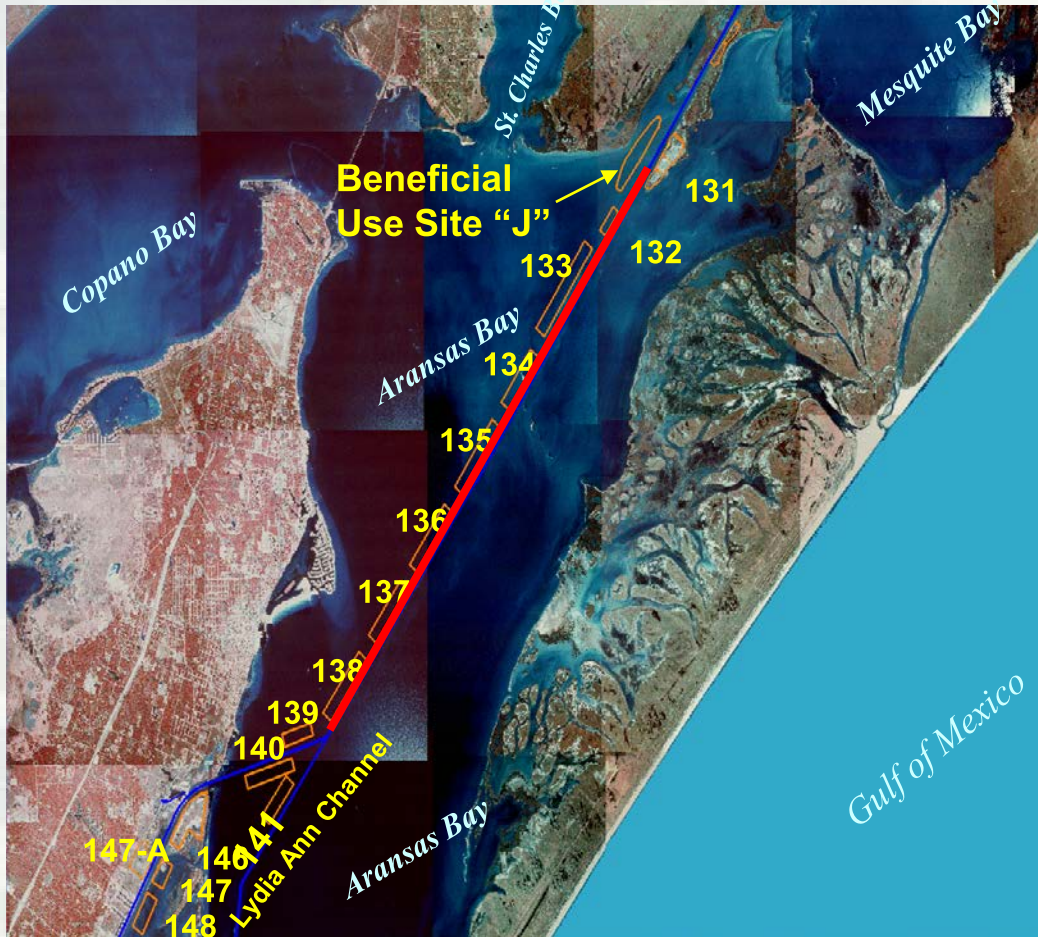
Project:	Gulf Intracoastal Waterway Construct Beneficial Use (BU) Site at Aransas National Wildlife Refuge
Type of Work:	BU Site
Material Type:	Silt/Clay
Type of Equipment:	Marsh Buggy
Est. Start Date:	April 2013





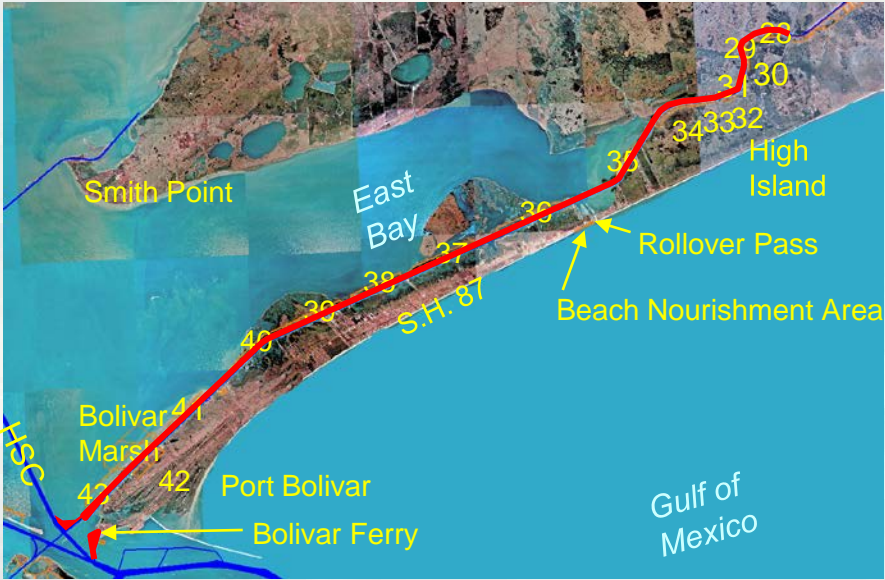
Project:	Gulf Intracoastal Waterway Port O'Connor to San Antonio Bay
Dredging Quantity:	750,000 cubic yards
Material Type:	Sand/Silt
Placement Area:	Upland/Open Water/BU
Distance to Place Area:	1.0 Mile Avg.
Type of Equipment:	Pipeline Dredge
Env. Window:	April thru October
Reason for Window:	Nesting Bird
Est. Start Date:	May 2013





Project:	Gulf Intracoastal Waterway Main Channel Across Aransas Bay
Dredging Quantity:	600,000 cubic yards
Material Type:	Sand/Silt
Placement Area:	Open / BU
Distance to Place Area:	1 Mile Avg.
Type of Equipment:	Pipeline Dredge
Env. Window:	April thru Oct
Reason for Window:	Whooping Crane/Nesting Birds
Est. Start Date:	July 2013





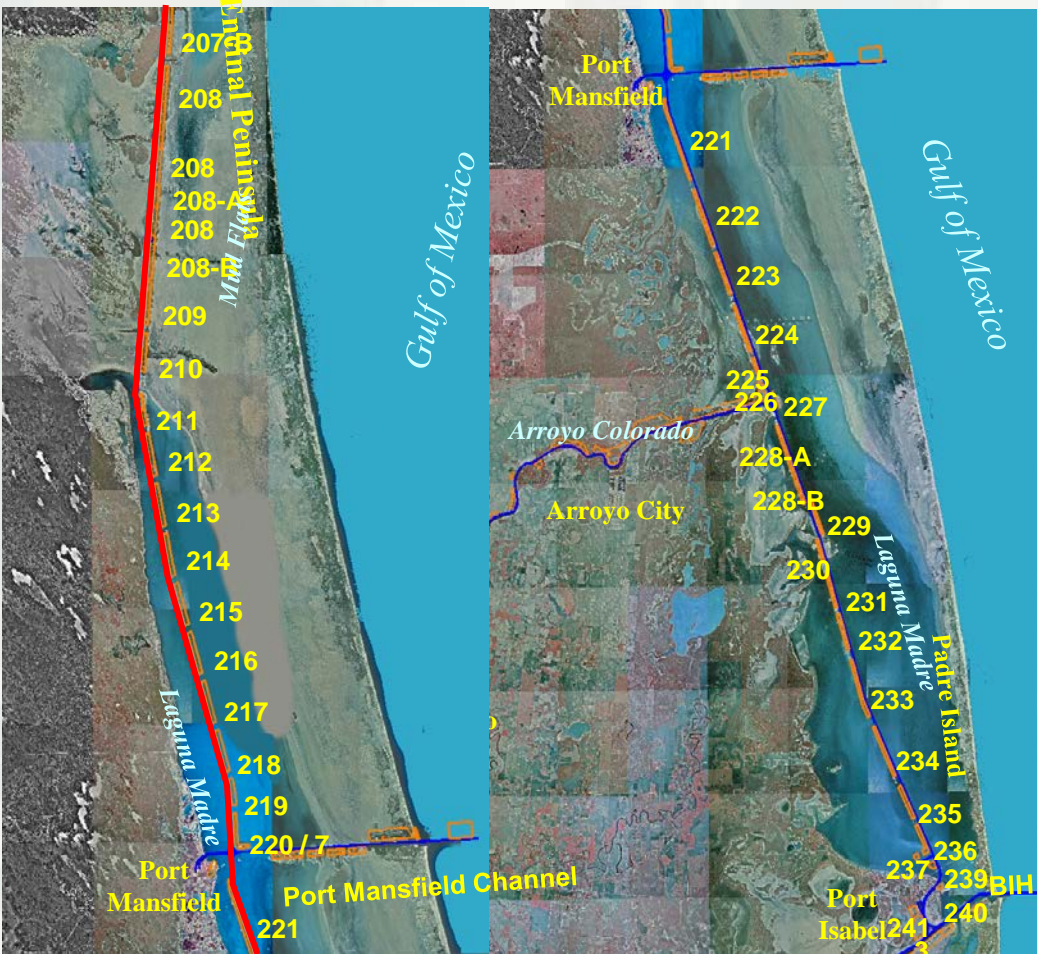
Project:	Gulf Intracoastal Waterway High Island to Bolivar, Channel to Port Bolivar, and Across Galveston Bay
Dredging Quantity:	400,000 cubic yards
Material Type:	Fine Sand/Silt
Placement Area:	Open / Upland Confined/BU
Distance to Place Area:	2 Miles Avg.
Type of Equipment:	Pipeline Dredge
Env. Window:	Oct-Mar
Reason for Window:	Nesting Turtles
Est. Start Date:	October 2013



FY 2014 Contracts

Gulf Intracoastal Waterway, TX





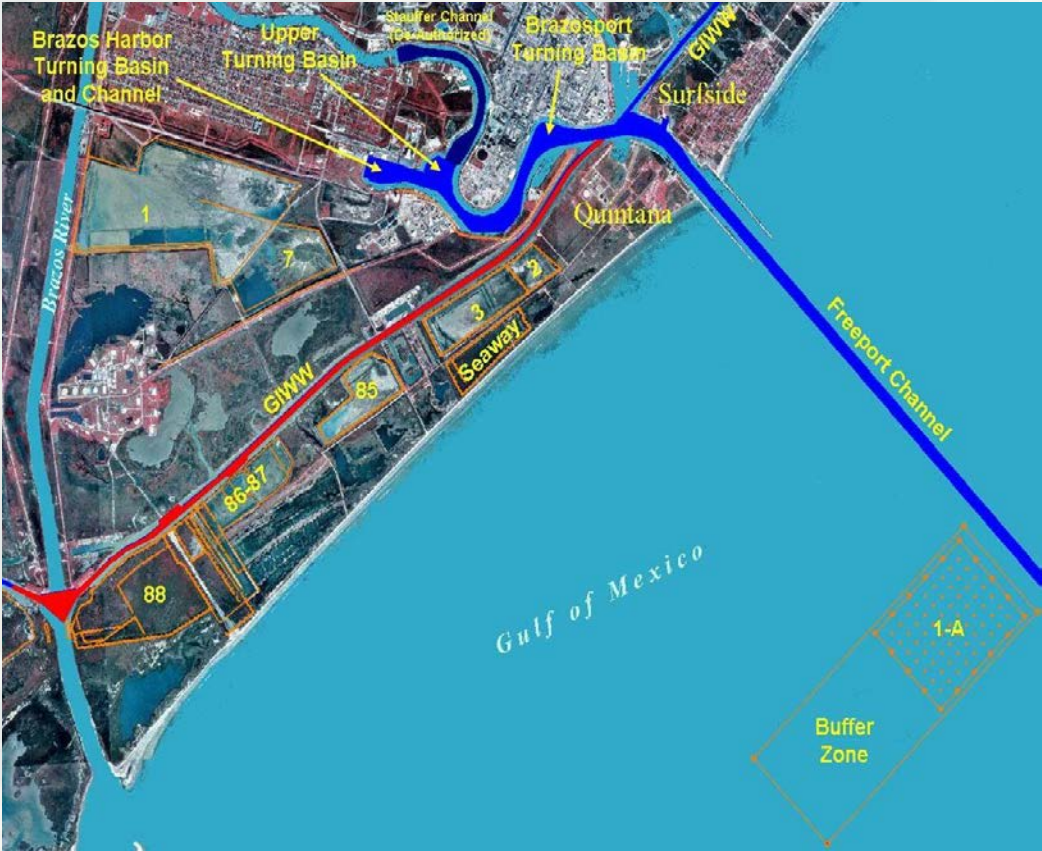
Project:	Gulf Intracoastal Waterway Corpus Christi to Port Isabel
Dredging Quantity:	2,000,000 cubic yards
Material Type:	Fine Silt/Sand
Placement Area:	Open/BU Sites
Distance to Placement Area:	3 Miles Avg.
Type of Equipment:	Pipeline Dredge
Env. Window:	Oct. – Mar.
Reason for Window:	Seagrass
Award:	1 st Quarter





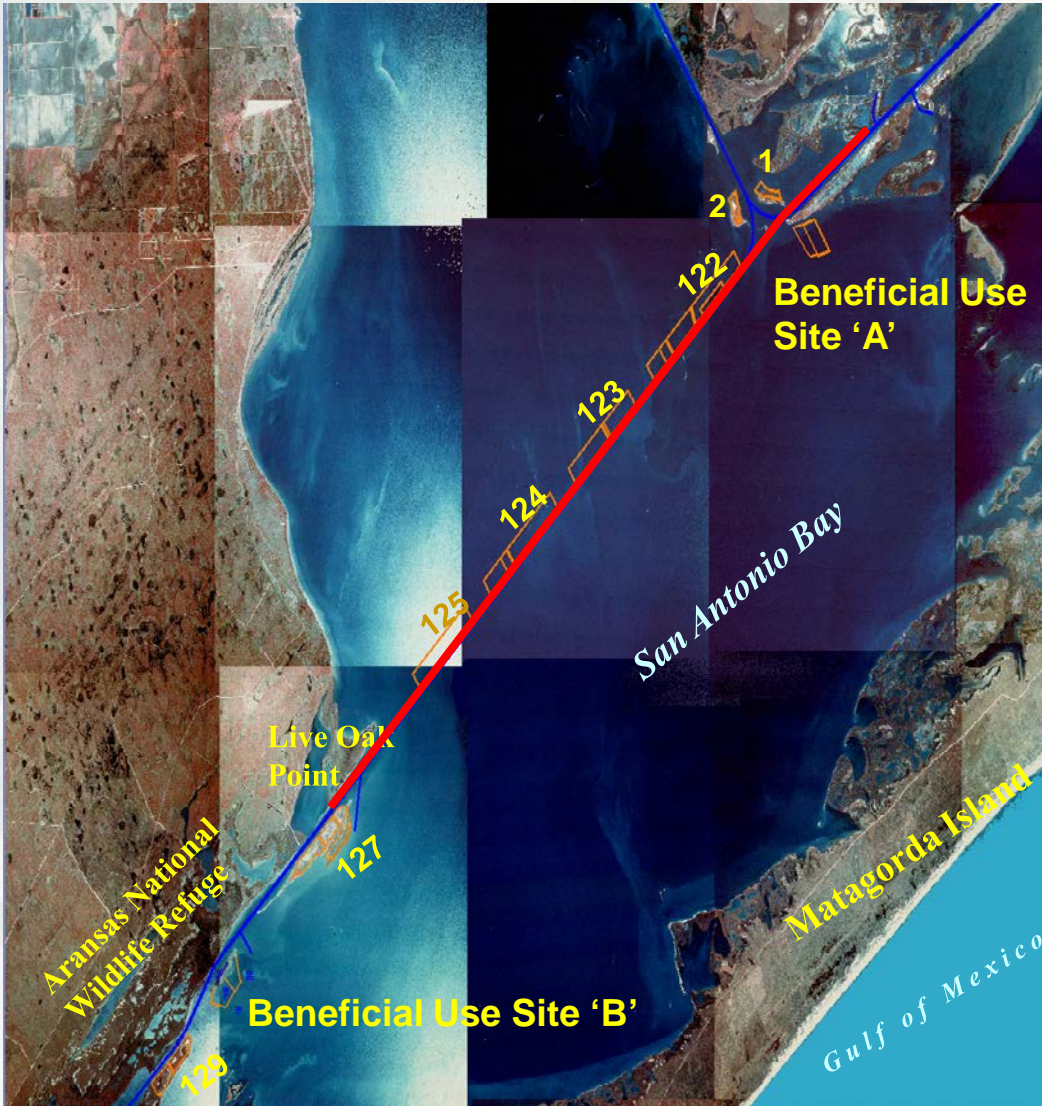
Project:	Gulf Intracoastal Waterway Boggy Bayou to Colorado River
Dredging Quantity:	1,000,000 cubic yards
Material Type:	Fine Silt/Sand
Placement Area:	Open/Upland Confined
Distance to Placement Area:	1 Miles Avg.
Type of Equipment:	Pipeline Dredge
Award:	1 st Quarter





Project:	Gulf Intracoastal Waterway Freeport to Brazos River Crossing
Dredging Quantity:	1,000,000 cubic yards
Material Type:	Fine Silt/Sand
Placement Area:	Open/Upland Confined/BU Sites
Distance to Placement Area:	2 Miles Avg.
Type of Equipment:	Pipeline Dredge
Award:	2 nd Quarter





Project:	Gulf Intracoastal Waterway Turnstake to Live Oak
Dredging Quantity:	1,200,000 cubic yards
Material Type:	Fine Silt/Sand
Placement Area:	Open/BU Sites
Distance to Placement Area:	1 Mile Avg.
Type of Equipment:	Pipeline Dredge
Env. Window:	Apr. – Oct.
Reason for Window:	Whooping Cranes
Award:	3 rd Quarter





Project:	Gulf Intracoastal Waterway Colorado River to Upper Matagorda Bay
Dredging Quantity:	2,000,000 cubic yards
Material Type:	Fine Silt/Sand
Placement Area:	Open/Upland Confined
Distance to Placement Area:	1 Miles Avg.
Type of Equipment:	Pipeline Dredge
Award:	4 th Quarter



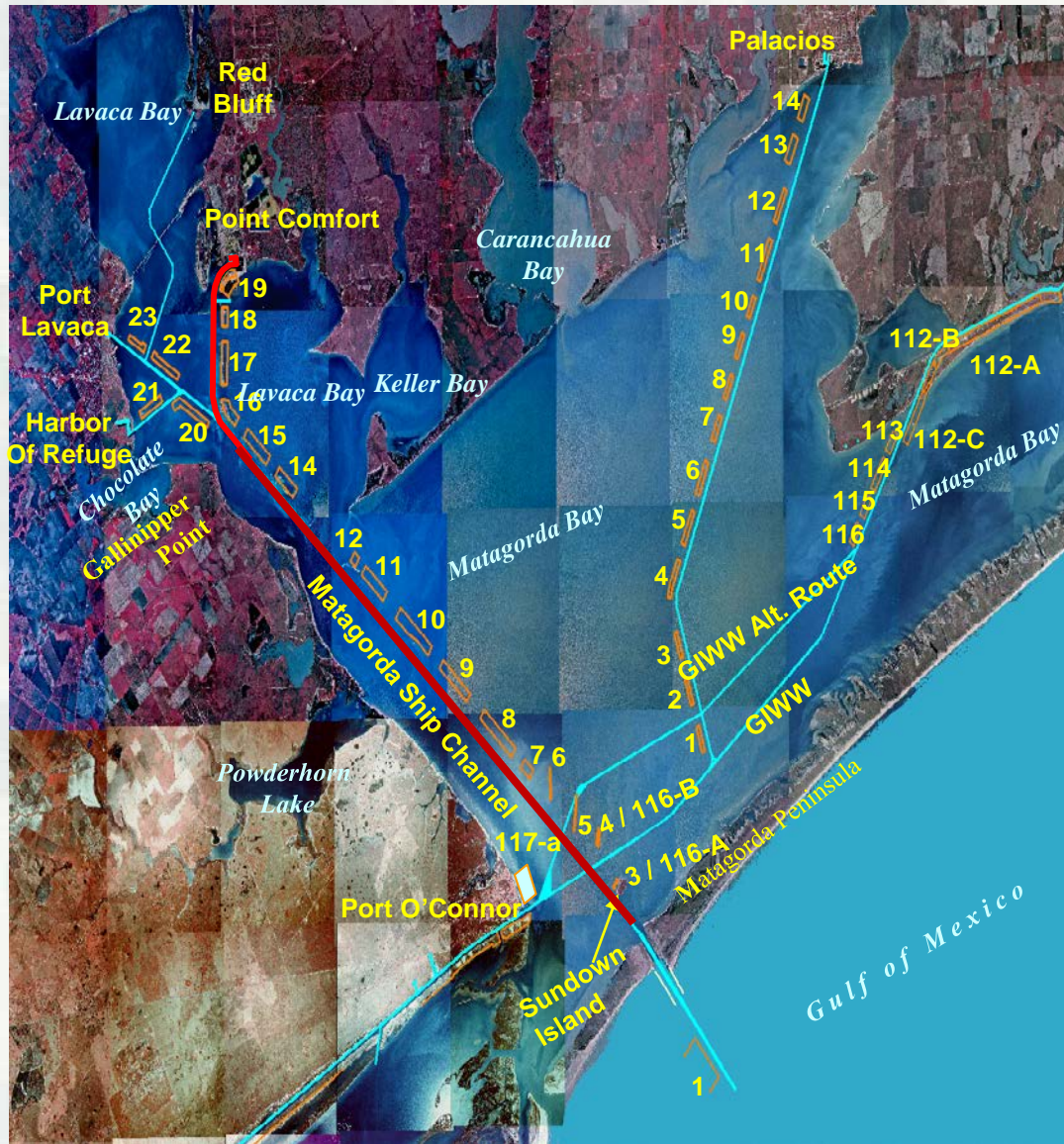


Project:	Gulf Intracoastal Waterway High Island to Port Bolivar
Dredging Quantity:	1,000,000 cubic yards
Material Type:	Fine Silt/Sand
Placement Area:	Open/Upland Confined/BU
Distance to Placement Area:	2 Miles Avg.
Type of Equipment:	Pipeline Dredge
Env. Window:	Oct. – Mar.
Reason for Window:	Nesting Turtles
Award:	4 th Quarter



FY 2013 Contract Matagorda Ship Channel



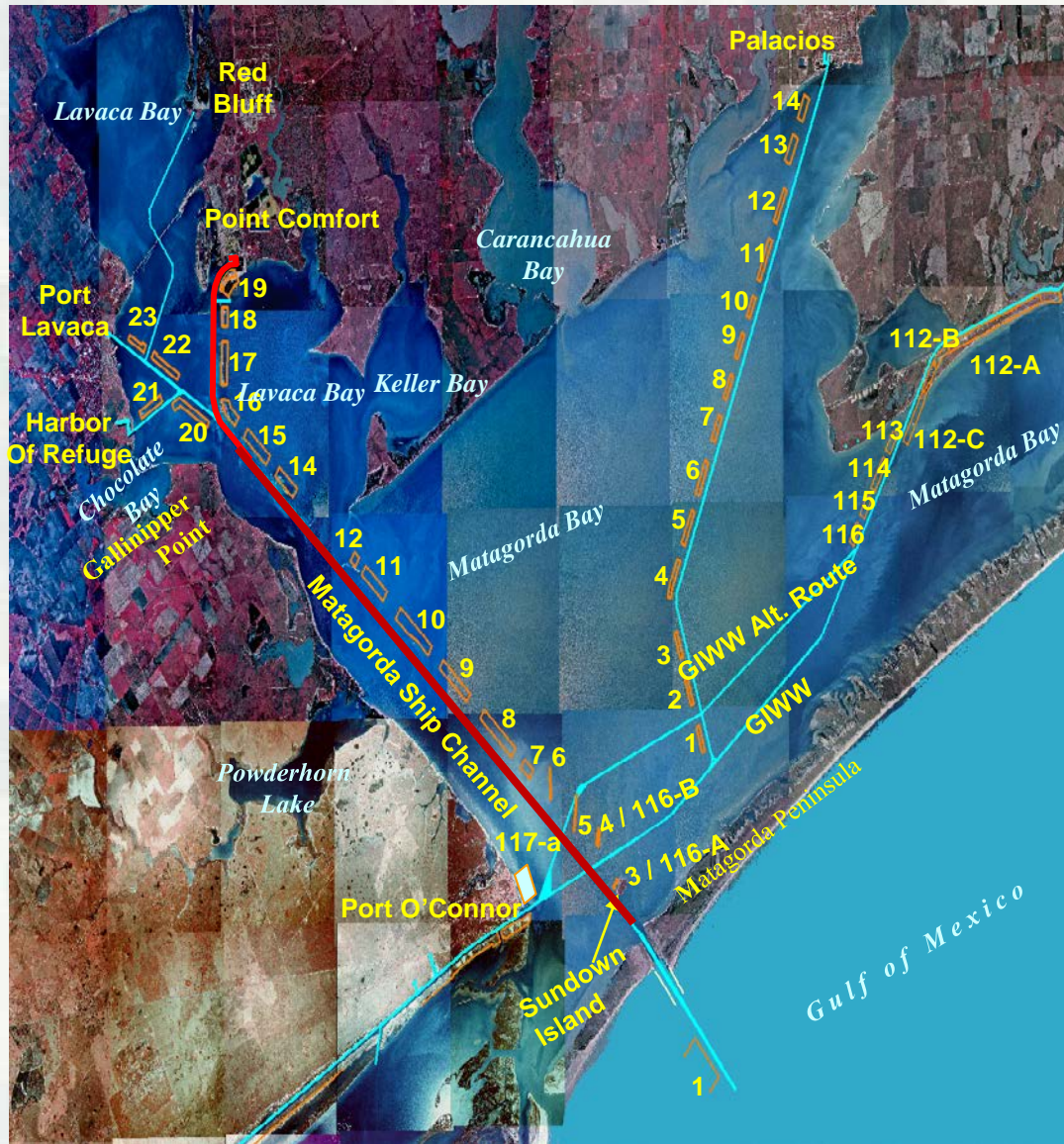


Project:	Matagorda Ship Channel Matagorda Peninsula to Point Comfort
Dredging Quantity:	1,100,000 cubic yards
Material Type:	Sand/Silt
Placement Area:	BU/Open Water
Distance to Place Area:	1 Mile Avg.
Type of Equipment:	Pipeline Dredge
Est. Start Date:	November 2012



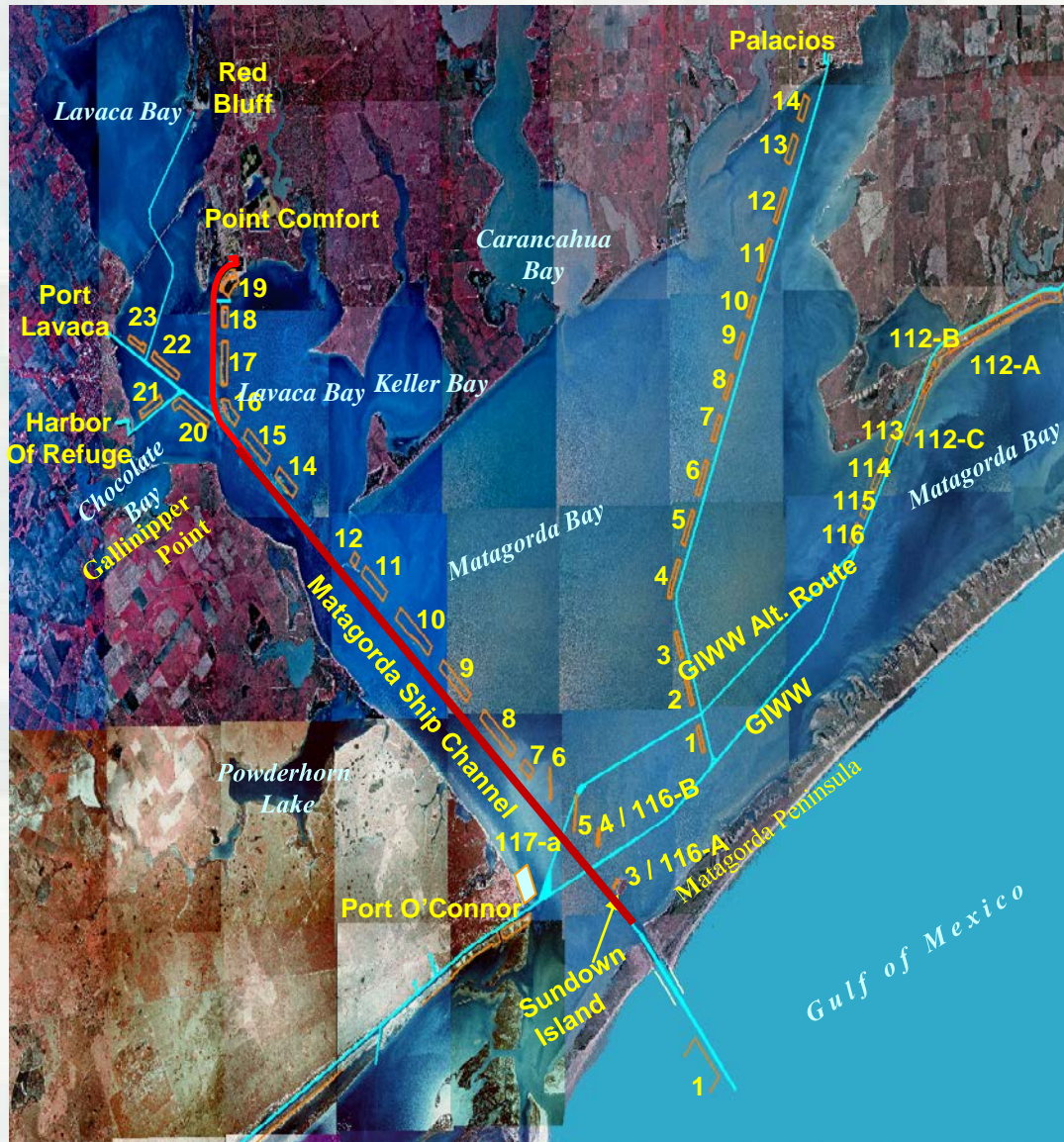
FY 2014 Contract Matagorda Ship Channel





Project:	Matagorda Ship Channel Peninsula to Point Comfort
Dredging Quantity:	1,200,000 cubic yards
Material Type:	Sand/Silt
Placement Area:	BU/Open Water
Distance to Place Area:	1 Mile Avg.
Type of Equipment:	Pipeline Dredge
Award:	4 th Quarter





Project:	Matagorda Ship Channel – Construct Beneficial Use Site
Type of Work:	BU Site
Material Type:	Silt/Clay
Type of Equipment:	Marsh Buggy
Award:	2 nd Quarter

Galveston District – 2012 BUDM Workshop

Custodians of the Coast



BUILDING STRONG®

Questions Comments?



For more information, contact:

Alicia Rea
Operations Manager

Navigation Branch, Operations Division
U.S. Army Corps of Engineers, Galveston
409-766-3995
alicia.d.rea@usace.army.mil



Galveston Harbor & Houston Ship Channel

- Barbours Cut
- Bayport Ship Channel
- Greens Bayou

Tricia Campbell, P.E.

Operations Manager

Navigation Branch

November 6, 2012

Galveston District – 2012 Beneficial Use of Dredged Material Workshop

Custodians of the Coast



®

US Army Corps of Engineers
BUILDING STRONG®



Tricia Campbell Operations Manager



Galveston Harbor

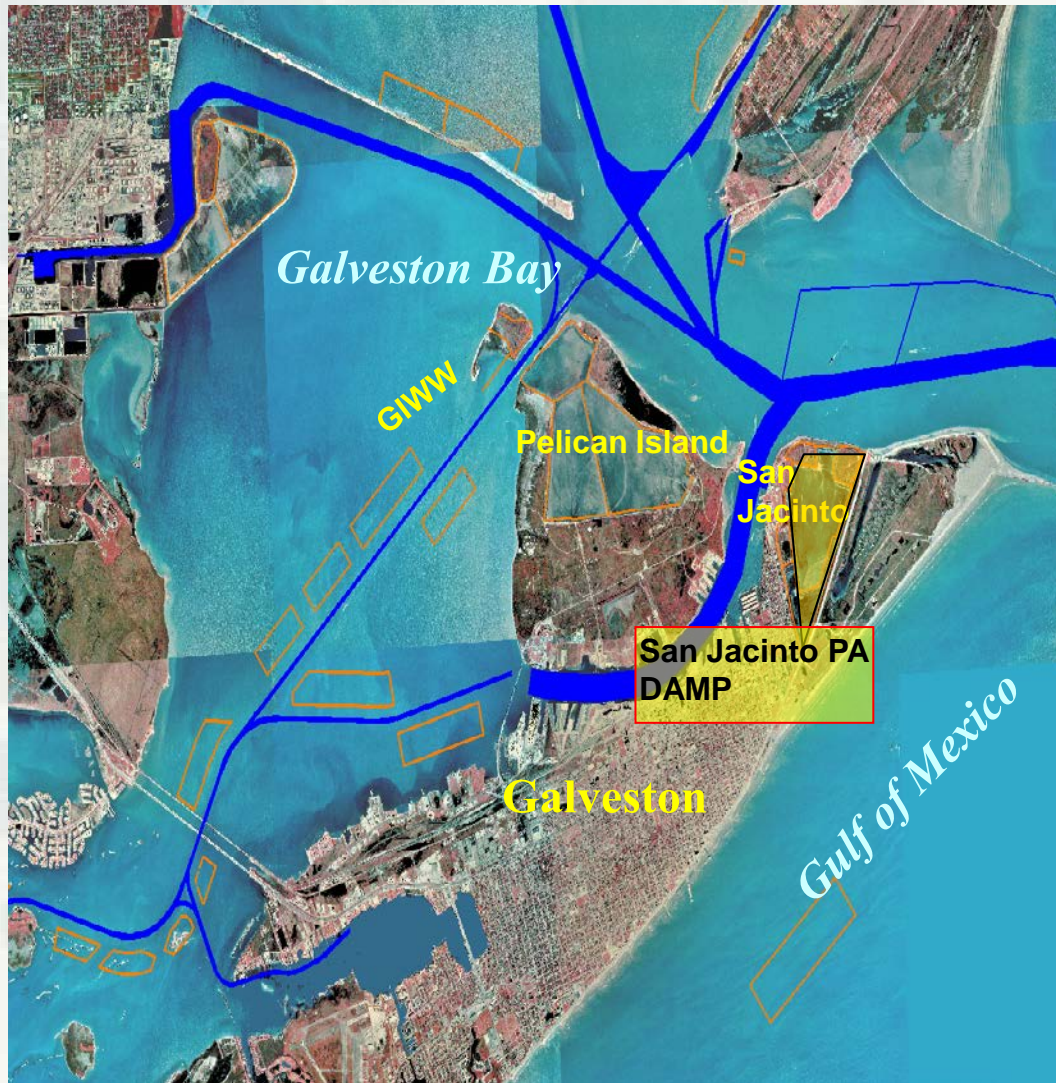
Houston Ship Channel

- Bayport Ship Channel
- Barbour's Terminal Channel
- Green's Bayou Channel



FY 2013 Contracts Galveston Harbor





Project:	Galveston Harbor & Channel - San Jacinto PA Disposal Area Management Plan (DAMP)
Type of Work:	Dewatering
Material Type:	Silt/Clay
Placement Area:	San Jacinto
Type of Equipment:	Marsh Buggy
Est. Start Date:	December 2012





Project:	Galveston Harbor & Channel - Galveston Entrance, Outer and Inner Bar – (w/option for HSC South of Redfish High Shoal Reach
Dredging Quantity:	3,500,000 cubic yards
Material Type:	Silt/Sand
Placement Area:	Offshore/BU
Distance to Place Area:	4 Mile Avg.
Type of Equipment:	Hopper Dredge
Est. Start Date:	June 2013



FY 2014 Contract Galveston Harbor





Project:	Galveston Harbor & Channel - Galveston Entrance, Outer and Inner Bar
Dredging Quantity:	1,500,000 cubic yards
Material Type:	Silt/Sand
Placement Area:	Offshore/BU
Distance to Place Area:	4 Mile Avg.
Type of Equipment:	Hopper Dredge
Award:	3 rd Quarter

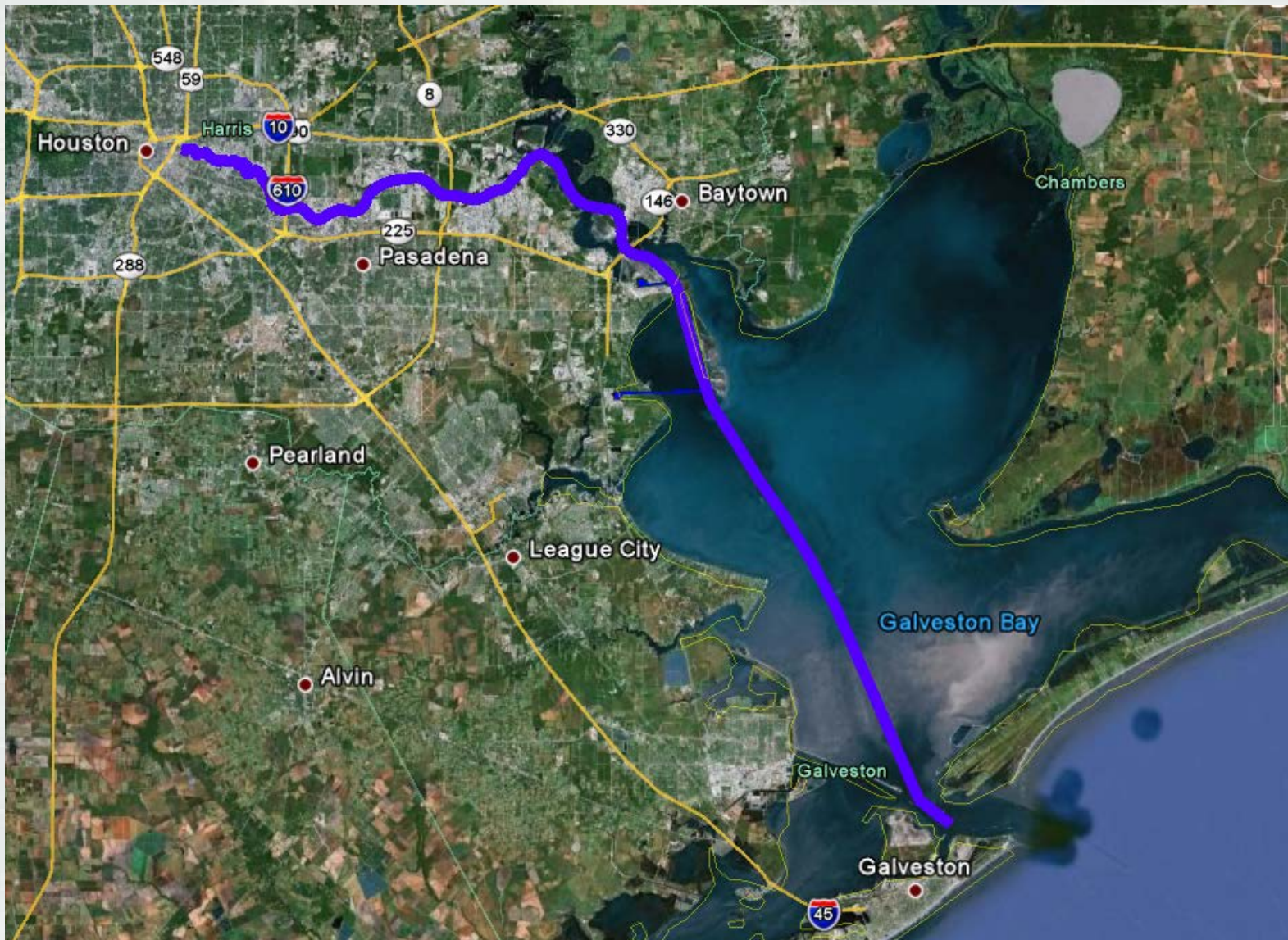


FY 2013 Contracts

Houston Ship Channel

- Barbours Terminal**
- Bayport Ship Channel**
- Greens Bayou**



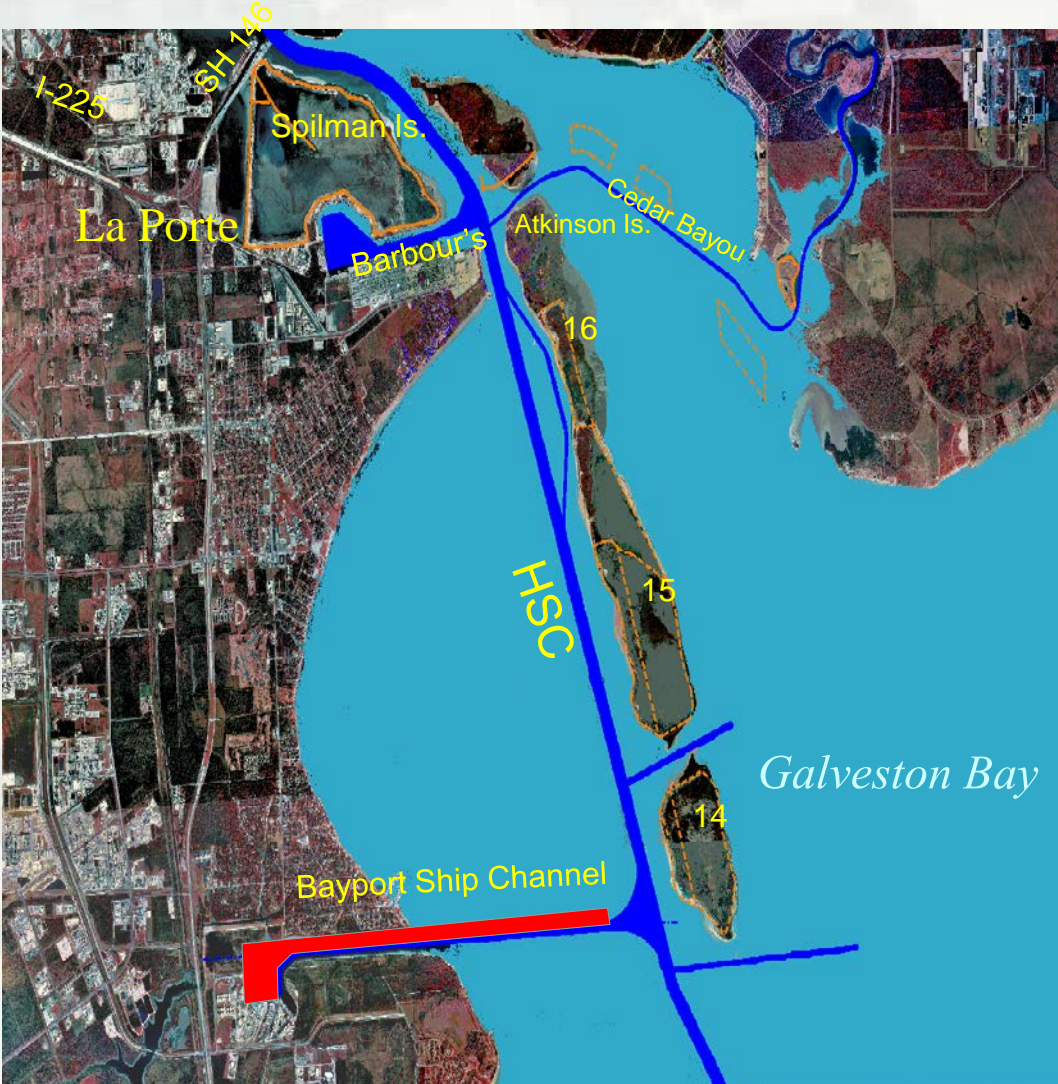


Galveston District – 2012 BUDM Workshop

Custodians of the Coast



BUILDING STRONG®



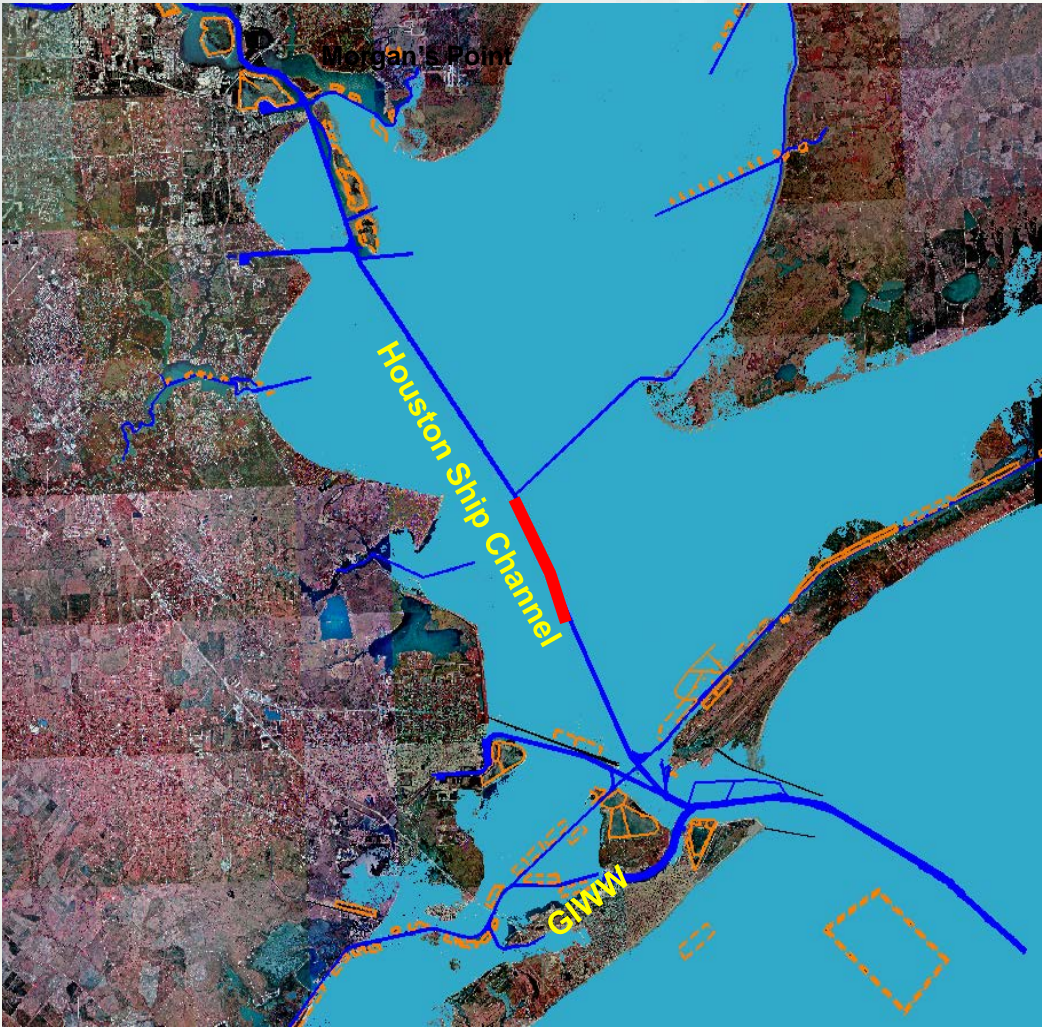
Project:	Bayport Ship Channel Bayport Channel and Turning Basin
Dredging Quantity:	500,000 cubic yards
Material Type:	Silt
Placement Area:	PA15
Distance to Place Area:	4 Mile Avg.
Type of Equipment:	Pipeline Dredge
Est. Start Date:	December 2012





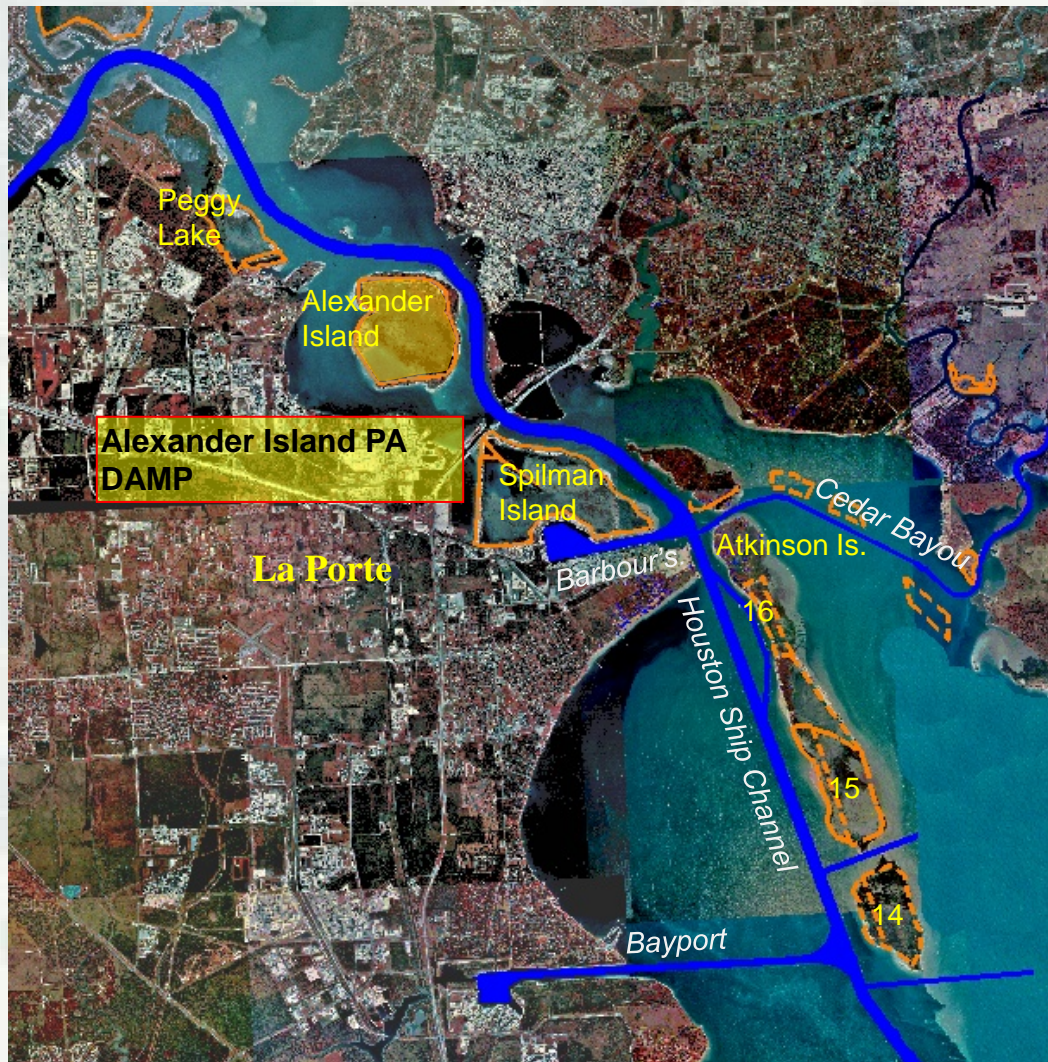
Project:	Barbours Terminal Main Channel and Turning Basin & Houston Ship Channel Morgan's Point to SH-146
Dredging Quantity:	1,200,000 cubic yards
Material Type:	Silt
Placement Area:	Spilman
Distance to Place Area:	1 Mile Avg.
Type of Equipment:	Pipeline Dredge
Est. Start Date:	April 2013





Project:	Houston Ship Channel South of Redfish High Shoal Reach (Option on Galveston Entrance Channel Contract)
Dredging Quantity:	1,000,000 cubic yards
Material Type:	Sand
Placement Area:	Offshore
Type of Equipment:	Hopper Dredge
Est. Start Date:	June 2013

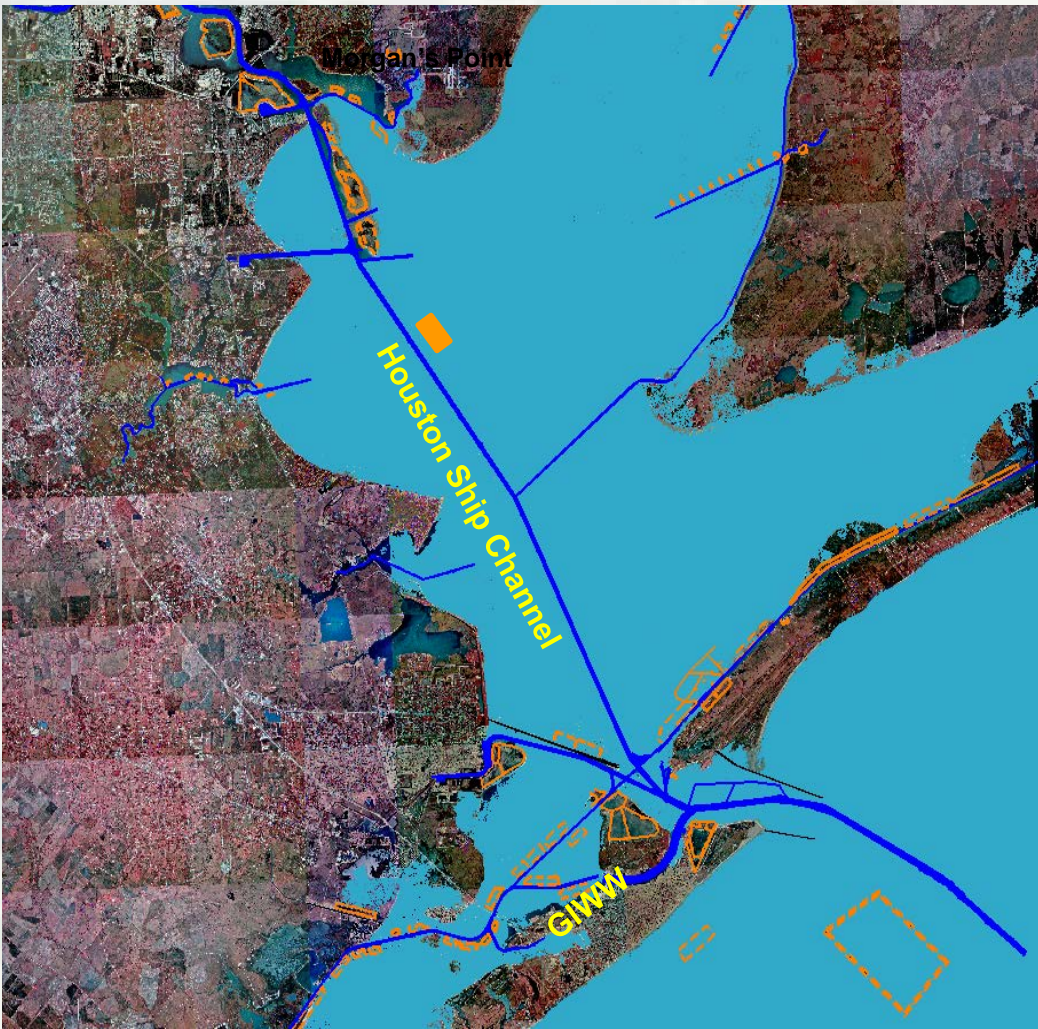




Project:	Houston Ship Channel Alexander Island PA Disposal Area Management Plan (DAMP)
Type of Work:	Dewatering
Material Type:	Silt/Clay
Placement Area:	Alexander Island
Type of Equipment:	Marsh Buggy
Est. Start Date:	August 2013

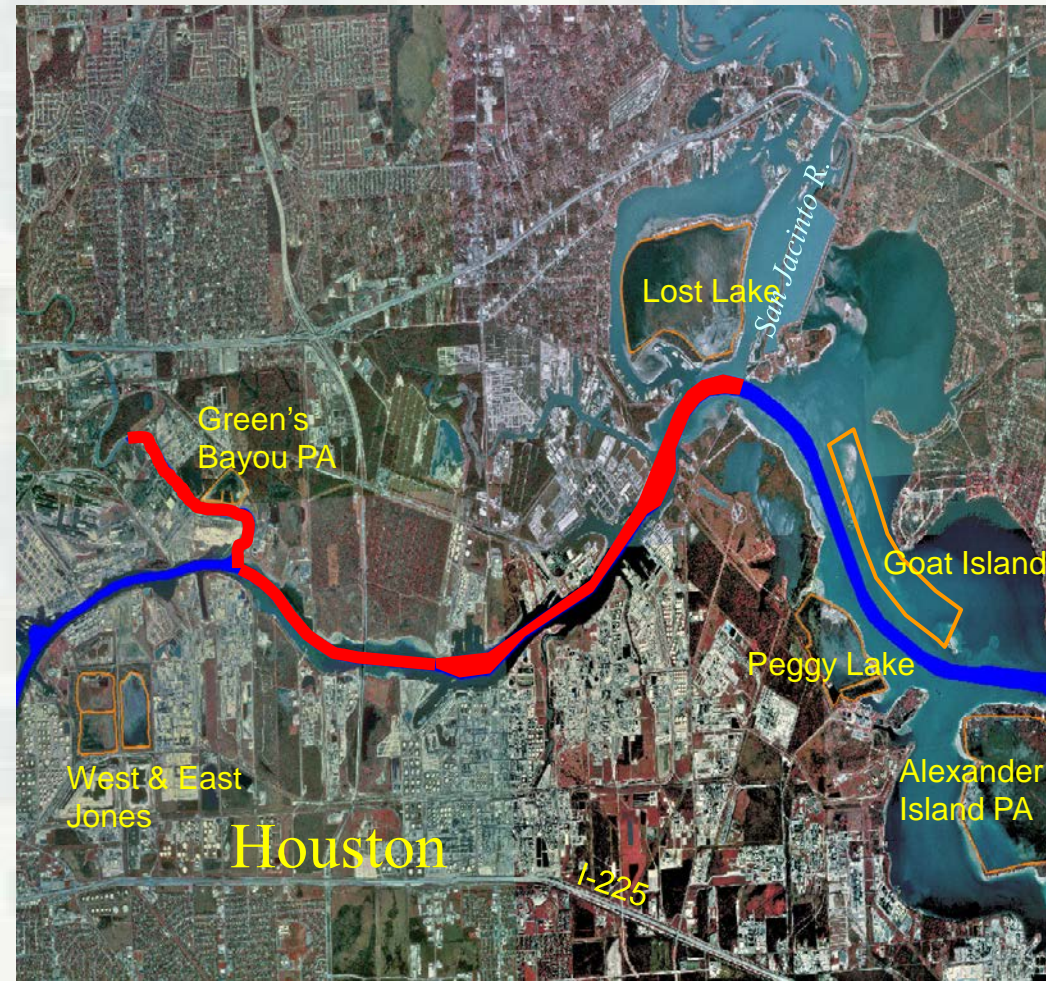
Galveston Bay





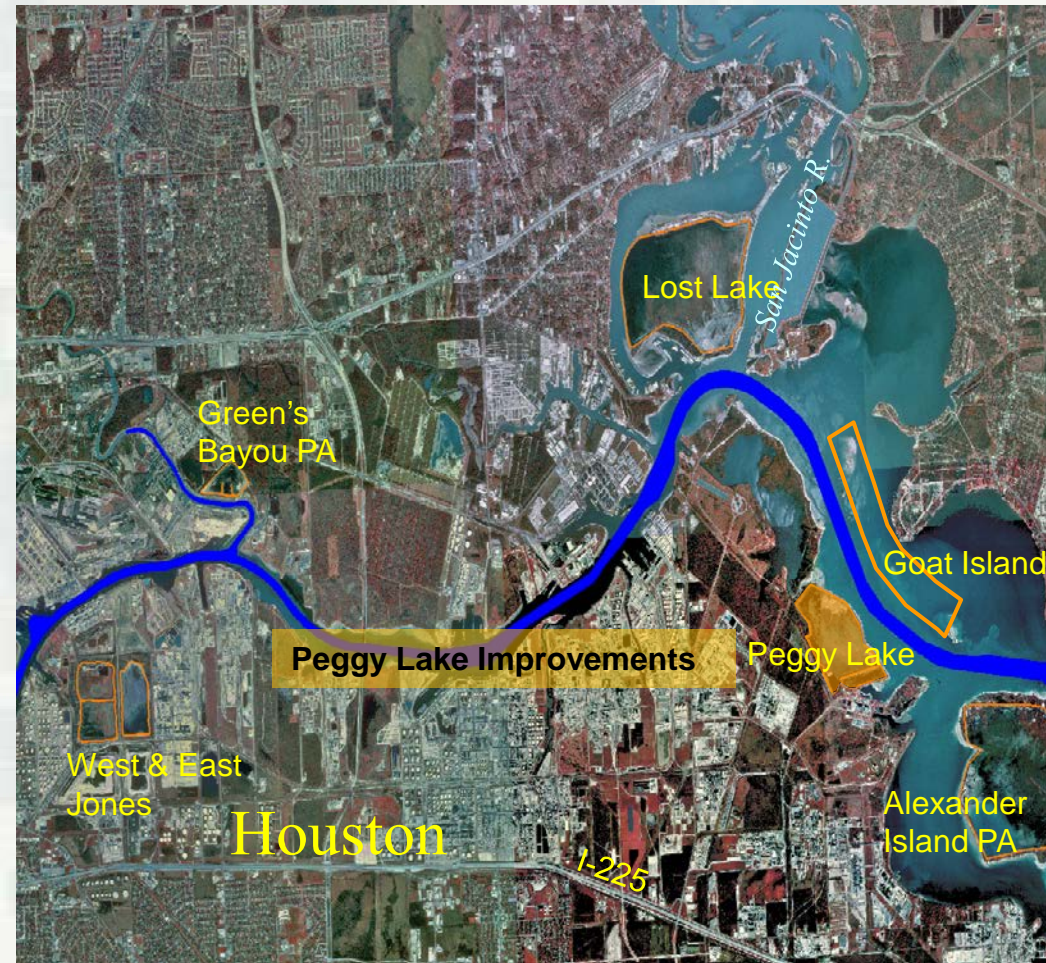
Project:	Houston Ship Channel Mid-Bay PA - Disposal Area Management Plan
Type of Work:	Dewatering
Material Type:	Silt
Placement Area:	Midbay
Type of Equipment:	Marsh Buggy
Env. Window:	August-March
Reason for Window:	Nesting birds
Est. Start Date:	September 2013





Project:	Houston Ship Channel Carpenters Bayou to Greens Bayou; with Greens Bayou
Dredging Quantity:	900,000 cubic yards
Material Type:	Silt
Placement Area:	Lost Lake & Clinton PA
Distance to Place Area:	2.5 Mile Avg.
Type of Equipment:	Pipeline Dredge
Est. Start Date:	September 2013





Project:	Houston Ship Channel Peggy Lake Improvements
Type of Work:	Levee raising
Material Type:	Silt/Clay
Placement Area:	Peggy Lake PA
Type of Equipment:	Dragline, dozers
Est. Start Date:	September 2013

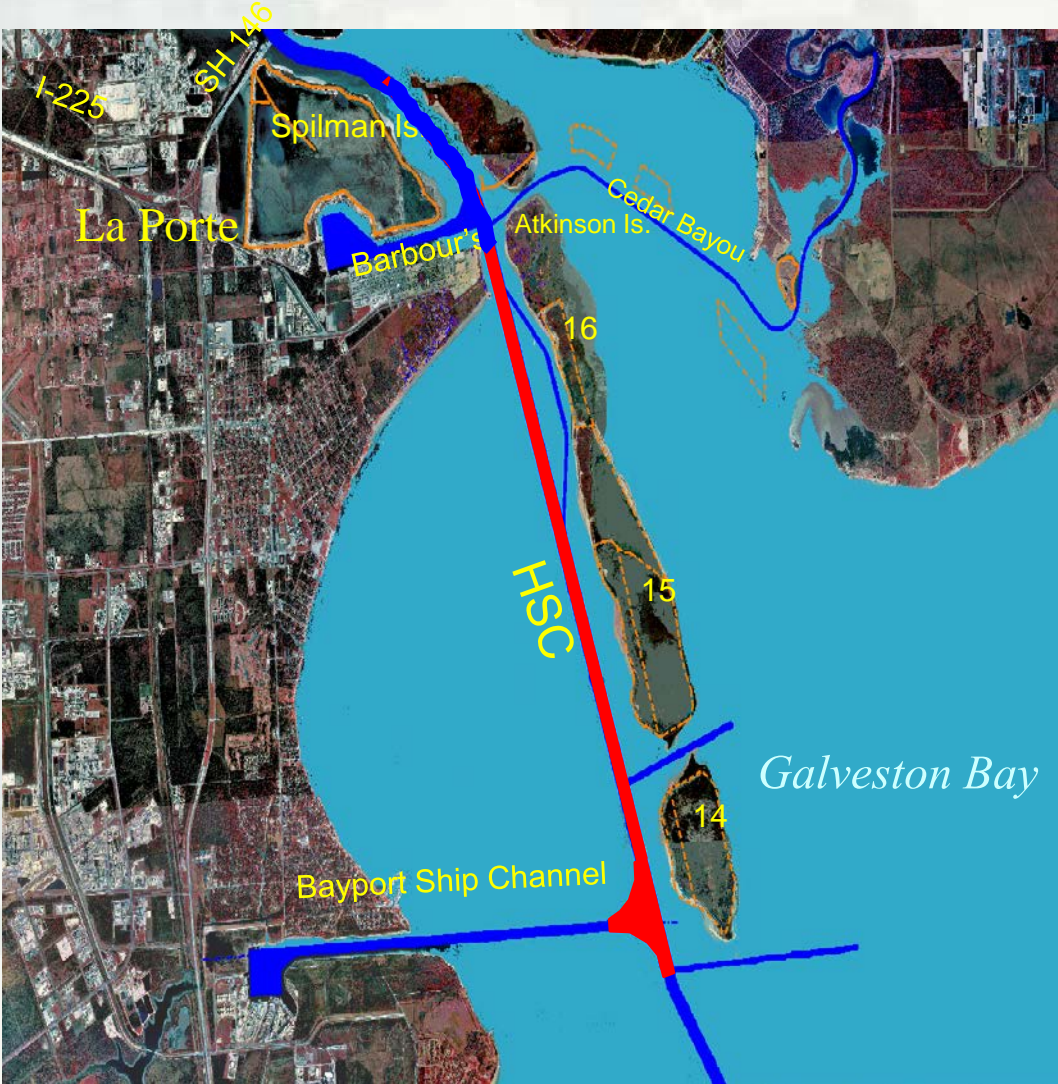


FY 2014 Contracts

Houston Ship Channel

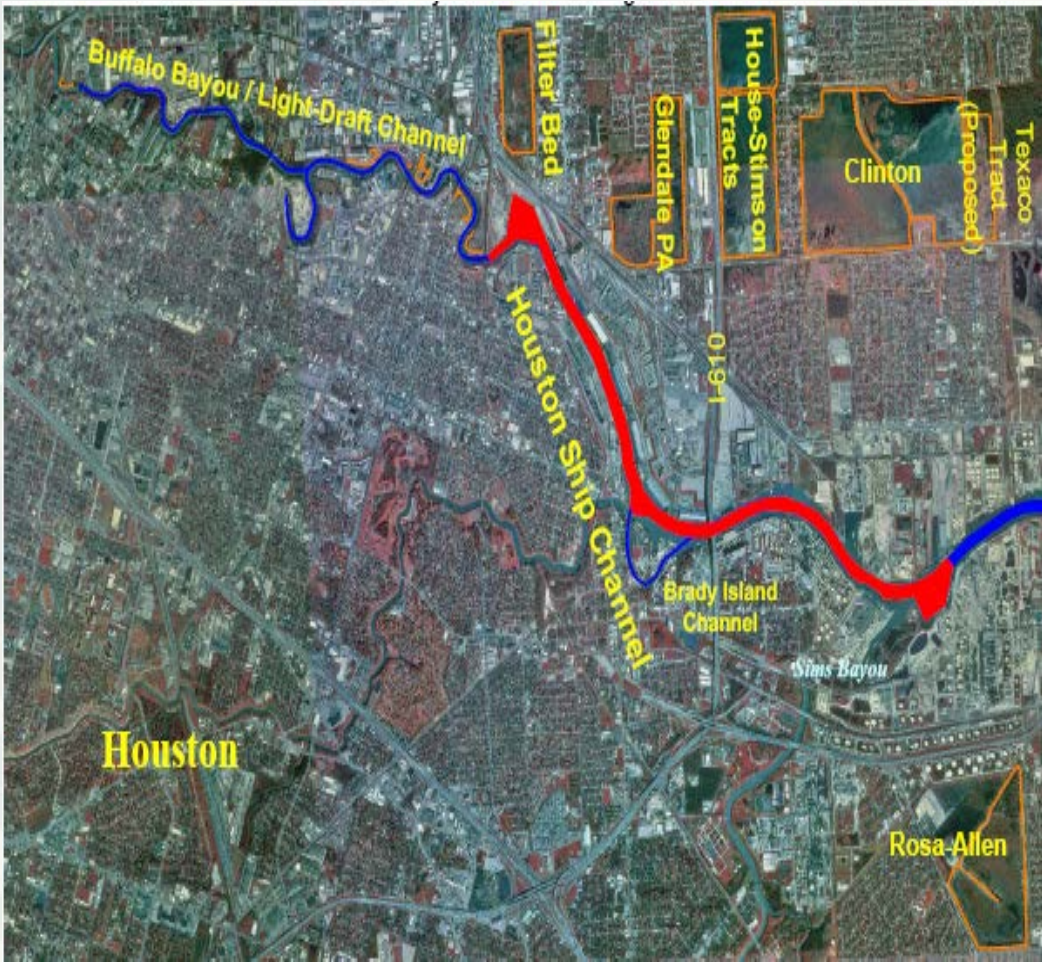
- **Barbours Terminal**
- **Bayport Ship Channel**
- **Greens Bayou**





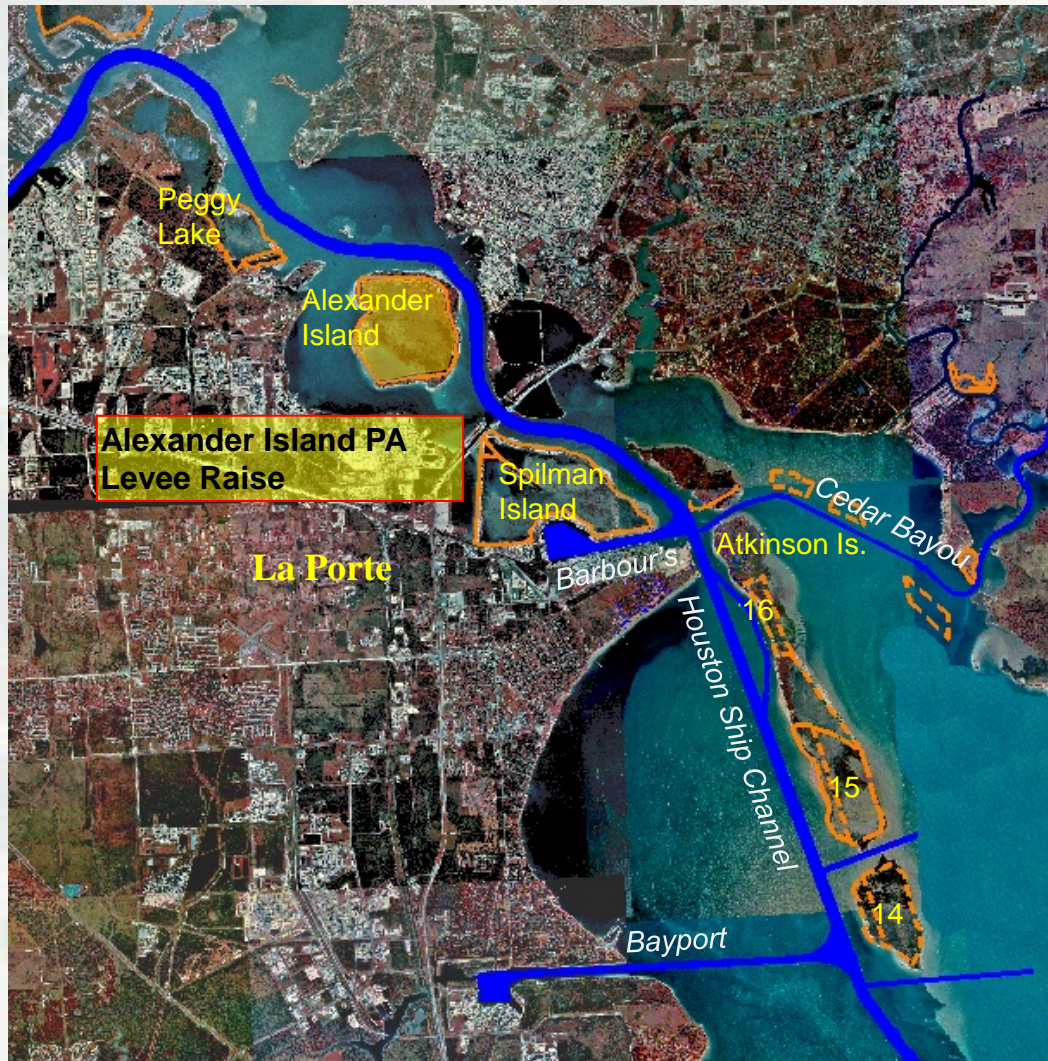
Project:	Houston Ship Channel Bayport Flare and Bayport to Morgan's Point
Dredging Quantity:	1,500,000 cubic yards
Material Type:	Silt
Placement Area:	Atkinson Cells M 6,7,8,9
Distance to Place Area:	4 Mile Avg.
Type of Equipment:	Pipeline Dredge
Award:	1 st Quarter





Project:	Houston Ship Channel Sims Bayou to Turning Basin
Dredging Quantity:	1,000,000 cubic yards
Material Type:	Silt
Placement Area:	Clinton (west cell)
Distance to Place Area:	3 Miles Avg.
Type of Equipment:	Pipeline Dredge
Award:	1 st Quarter

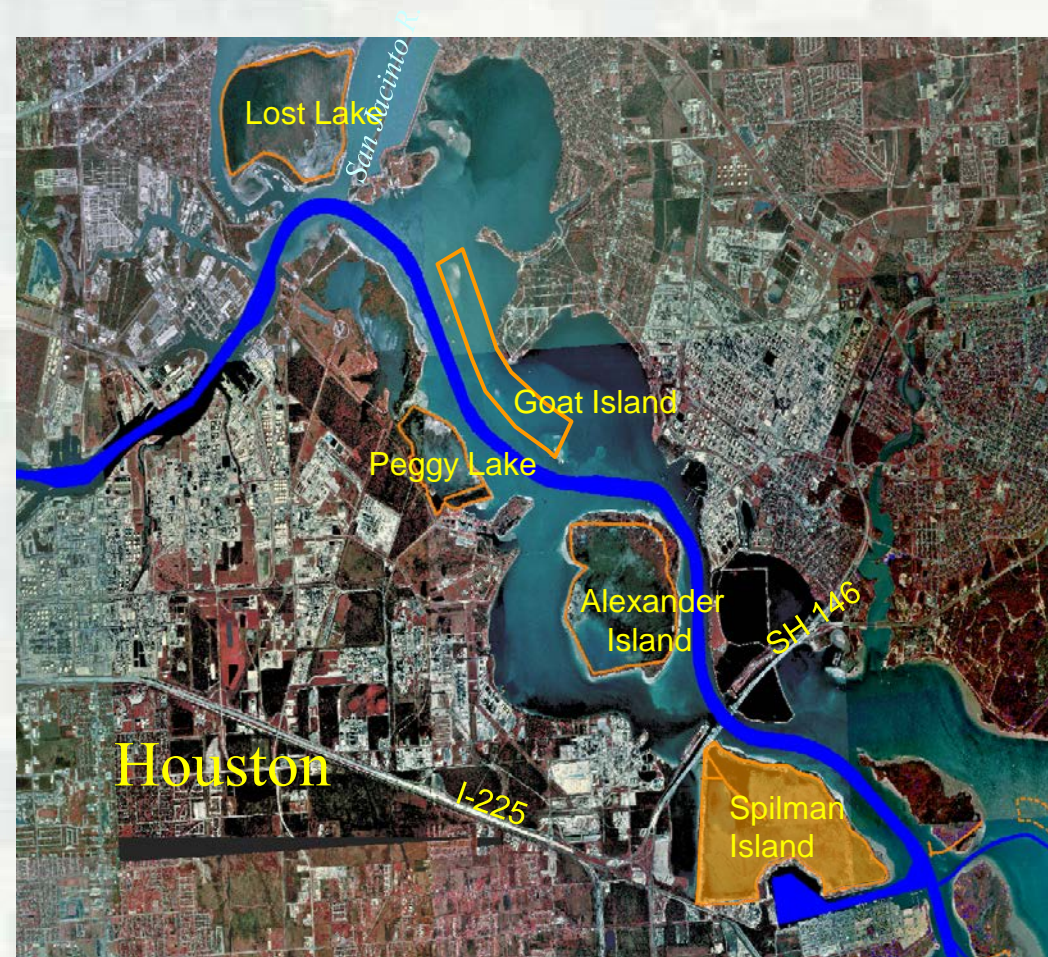




Project:	Houston Ship Channel Alexander Island PA Levee Raise
Type of Work:	Levee raising
Material Type:	Silt/Clay
Placement Area:	Alexander Island
Type of Equipment:	Dragline, dozers
Award:	2 nd Quarter

Galveston
Bay





Project:	Houston Ship Channel Spilman Island PA Disposal Area Management Plan (DAMP)
Type of Work:	Dewatering
Material Type:	Silt/Clay
Placement Area:	Spilman Island
Type of Equipment:	Marsh Buggy
Award:	4 th Quarter





Project:	Houston Ship Channel House Tract & Glendale Levee Raise
Type of Work:	Levee raising
Material Type:	Silt/Clay
Placement Area:	House Tract & Glendale
Type of Equipment:	Dragline, dozers
Env. Window:	NA
Reason for Window:	NA
Award:	4 th Quarter



Questions Comments?



For more information, contact:

Tricia Campbell
Operations Manager

Navigation Branch, Operations Division
U.S. Army Corps of Engineers, Galveston
409-766-3153

tricia.c.campbell@usace.army.mil



Freeport Harbor Channel to Victoria Chocolate Bayou

Eddie Irigoyen

Operations Manager

Navigation Branch

November 6, 2012

*Galveston District – 2012 Beneficial Use of Dredged
Material Workshop*

Custodians of the Coast



®

US Army Corps of Engineers
BUILDING STRONG®



Eddie Irigoyen Operations Manager



Freeport Harbor
Channel to Victoria
Chocolate Bayou



FY 2013 Contracts Freeport Harbor





Project:	Freeport Harbor Inside Channel
Dredging Quantity:	400,000 cubic yards
Material Type:	Sand/Silt
Placement Area:	PA 1
Distance to Place Area:	2.5 Mile Avg.
Type of Equipment:	Pipeline Dredge
Est. Start Date:	June 2013





Project:	Freeport Harbor Entrance Channel
Dredging Quantity:	1,000,000 cubic yards
Material Type:	Sand/Silt
Placement Area:	Offshore
Distance to Place Area:	2.5 Mile Avg.
Type of Equipment:	Hopper Dredge
Est. Start Date:	July 2013



FY 2014 Contract Freeport Harbor



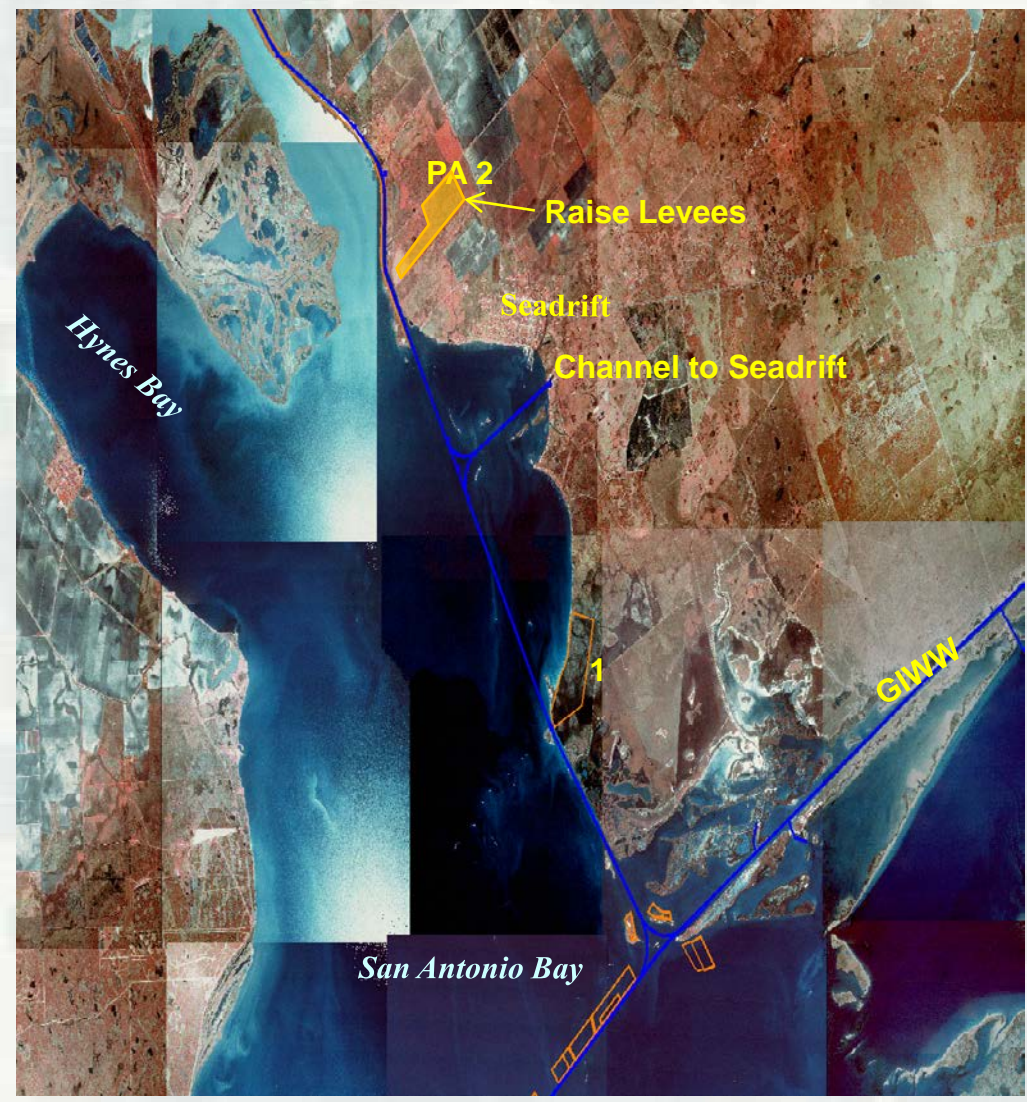


Project:	Freeport Harbor Entrance Channel
Dredging Quantity:	1,500,000 cubic yards
Material Type:	Sand/Silt
Placement Area:	Offshore
Distance to Place Area:	2.5 Mile Avg.
Type of Equipment:	Hopper Dredge
Award:	4 th Quarter



FY 2013 Contract Channel to Victoria



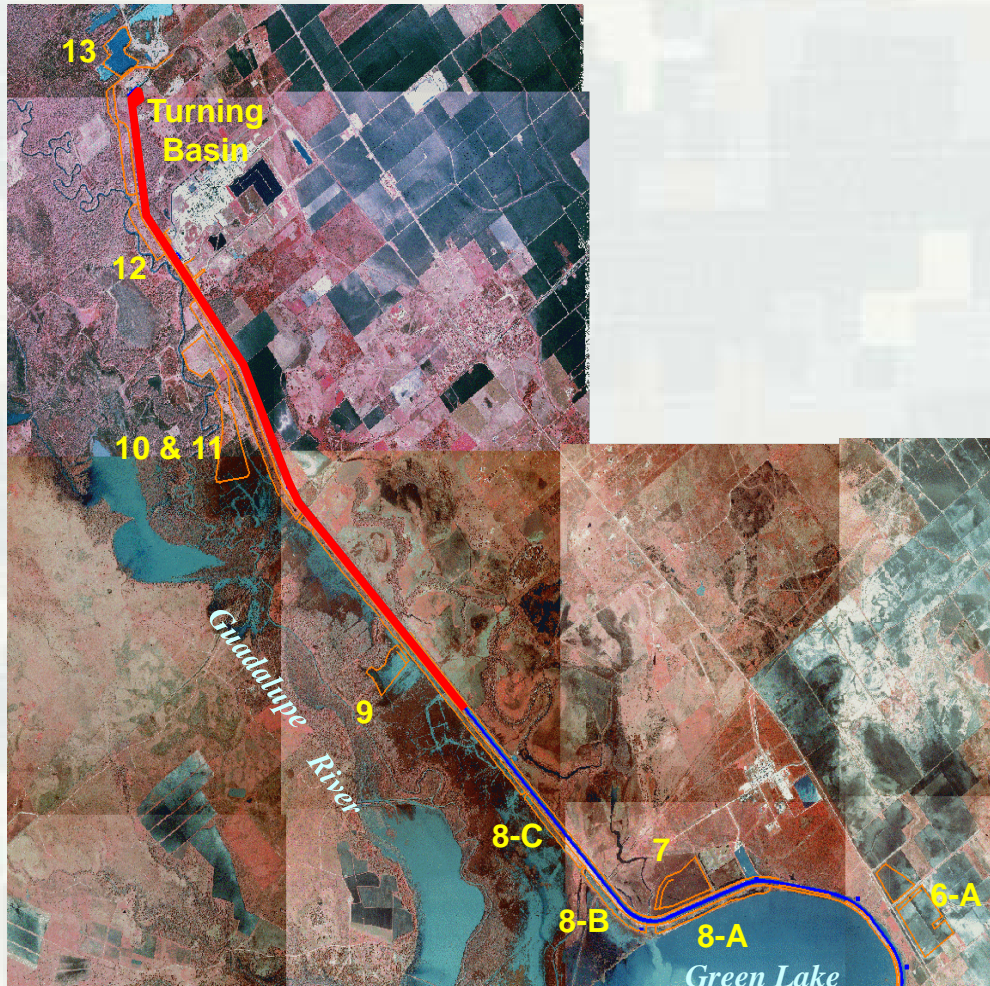


Project:	Channel to Victoria Raise Levee PA 2
Type of Work:	Levee raising
Material Type:	Cohesive material (silt & clay)
Placement Area:	PA 2
Type of Equipment:	Dragline, dozers
Est. Start Date:	June 2013



FY 2014 Contract Channel to Victoria



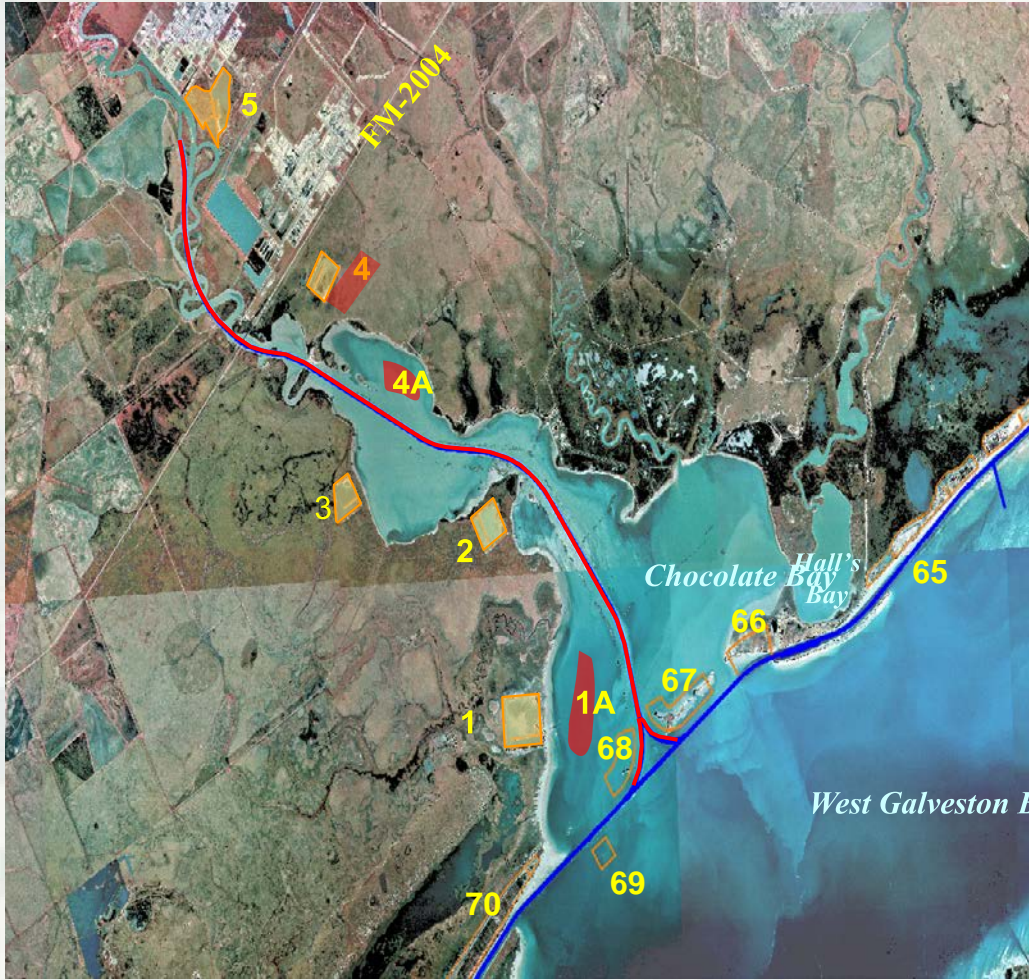


Project:	Channel to Victoria Upper Reach
Dredging Quantity:	500,000 cubic yards
Material Type:	Silt/Sand
Placement Area:	Upland Confined
Distance to Placement Area:	2.5 Mile Avg.
Type of Equipment:	Pipeline Dredge
Award:	3 rd Quarter



FY 2014 Contract Chocolate Bayou





Project:	Chocolate Bayou
Dredging Depth:	14 ft. Required Depth
Dredging Width:	125 ft.
Dredging Length:	Varies
Dredging Quantity:	800,000 cubic yards
Material Type:	Silt/Sand
Placement Area:	BU / Upland Confined
Distance to Placement Area:	1.5 Mile Avg.
Type of Equipment:	Pipeline Dredge
Env. Window:	NA
Reason for Window:	NA
Award:	4 th Quarter



Questions Comments?



For more information, contact:

Eddie Irigoyen
Operations Manager

Navigation Branch, Operations Division
U.S. Army Corps of Engineers, Galveston
409-766-3130

Eduardo.Irigoyen@usace.army.mil

