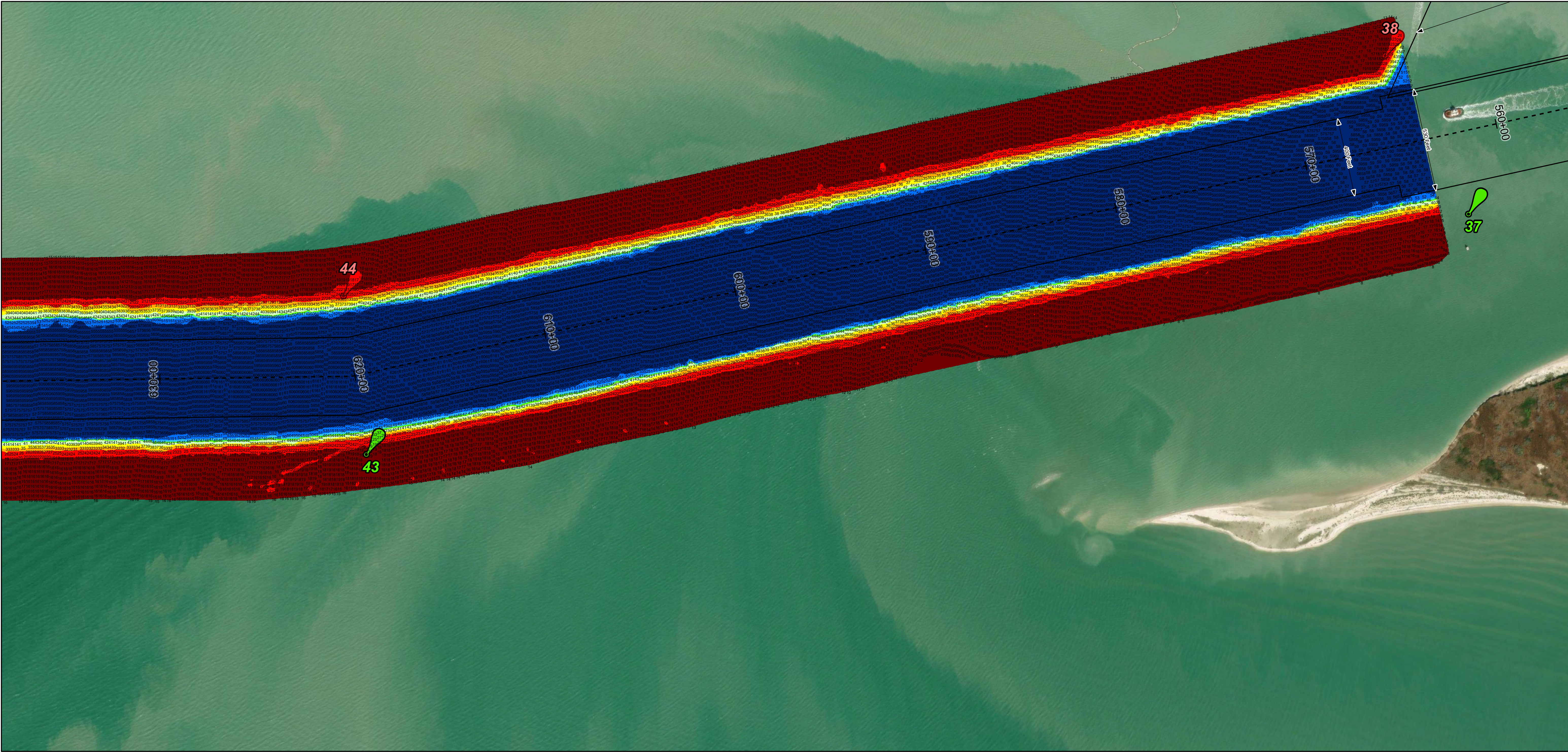
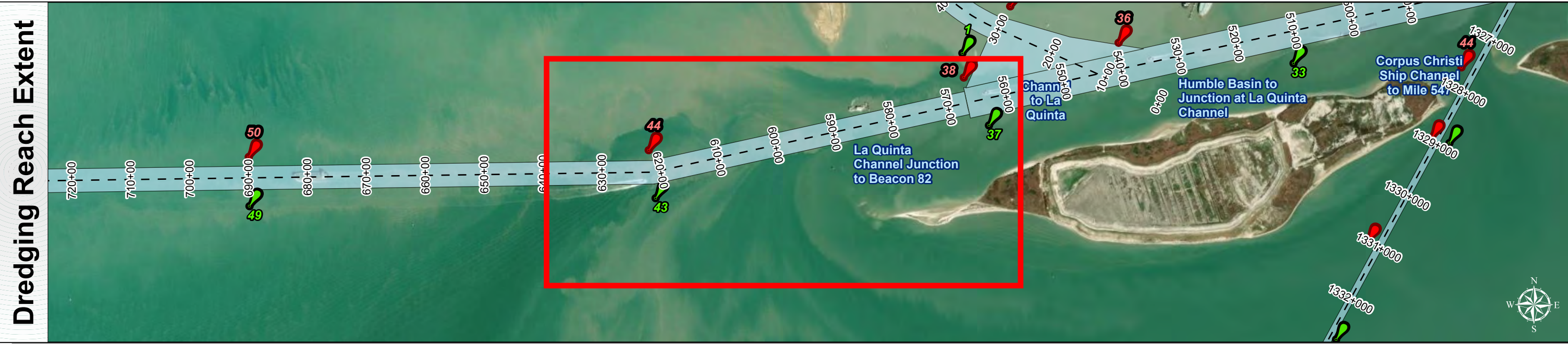


Corpus Christi Ship Channels: La Quinta Channel Junction to Beacon 82



U.S. Army Corps of Engineers
Galveston District



Channel Features

Channel Center Line

Channel Toe

Channel Dimensions

Aids to Navigation

Green Side Aids

Red Side Aids

Lights

MLLW

NOTES:
1. Horizontal coordinates are referenced to Texas state plane coordinate system, south central zone nad83 us survey feet.
2. Elevations are referenced to mean lower low tide (MLLW) datum.
3. This project was designed by the galveston district of the u.s. army corps of engineers. The initials and signatures and registration designations of individuals appear on these project documents within the scope of their employment as required by er1110-01152.
4. The information depicted on this survey map represents the results of surveys made on the dates indicated and can only be considered as indicating the general conditions existing at that time. These conditions are subject to rapid change due to shoaling events. A prudent mariner should not rely exclusively on the information provided here. Required by 33 of 209.325
5. For the most up to date information please check our website at: <http://www.svg.usace.army.mil/Missions/Navigation/HydrographicSurveys/>
Service Layer Credits: World Topographic Map: Texas Parks & Wildlife, Esri, HERE, Garmin, INCREMENT P, USGS, METINASA, NGA, EPA, USDA
World Imagery: Maxar
World Ocean Base: Esri, GEBCO, Garmin, NaturalVue

Additional Combined Survey Dates and Stationing:
COMB_SURV_INFO_HERE

Coordinate System: NAD 1983 StatePlane Texas South FIPS 4205 Feet
Projection: Lambert Conformal Conic

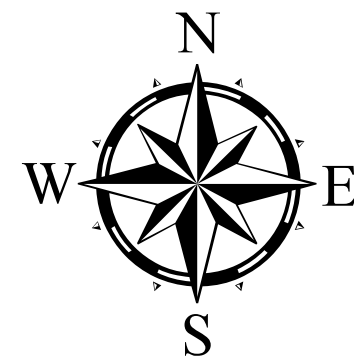
Dredging Reach Extent

Miles

Hydrographic Survey Extent

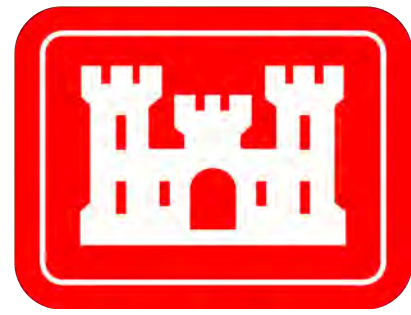
Feet

Latest Survey Collection Date: 24 February 2024		Authorized Depth: -54ft.
Document Page: 1 of 7	Website Index Number: 15	Side Slope Ratio: 1:3 (Rise : Run)
Scale: 1:3,000		PDF Print Date: 2/29/2024
Mapped by: M3AOXPAC		
Additional Imagery info:		

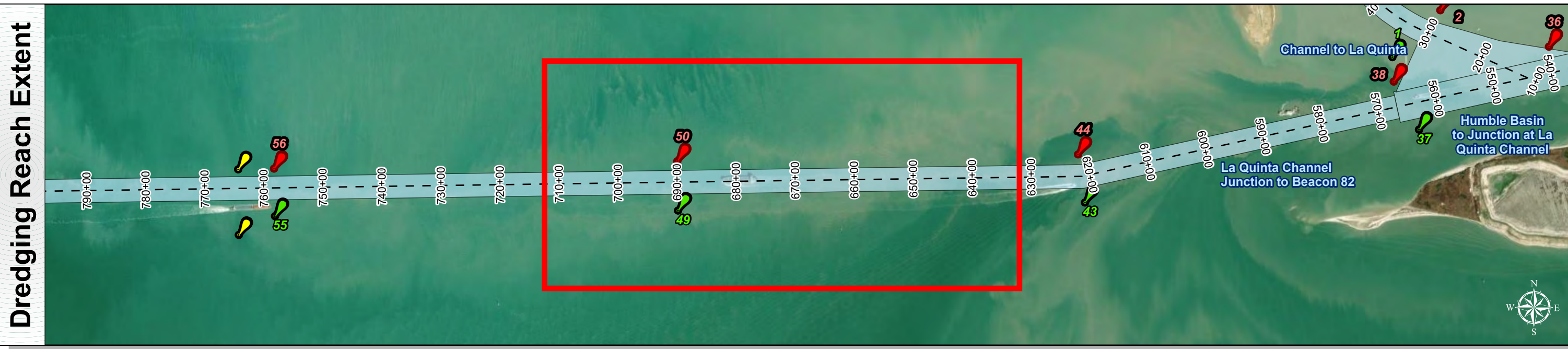
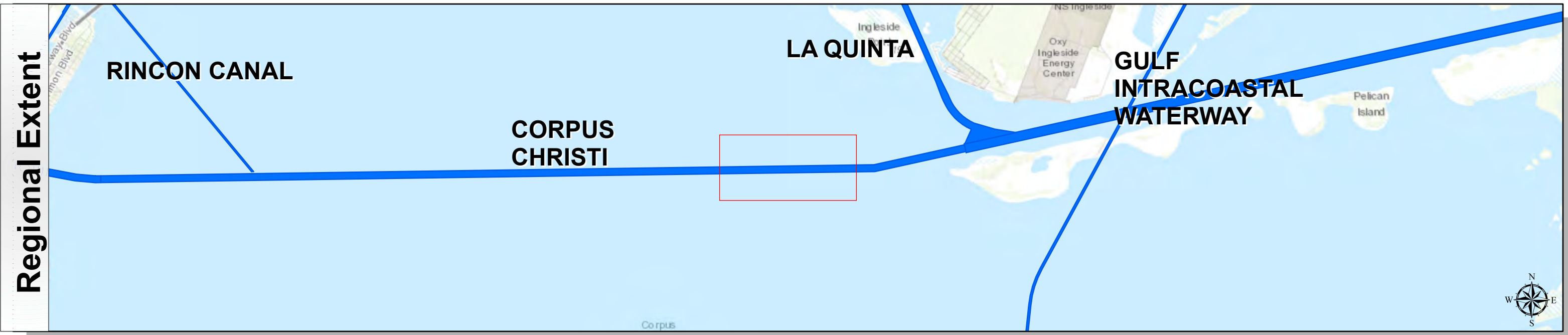


HYDROGRAPHIC SURVEY
U.S. ARMY ENGINEER DISTRICT
CORPS OF ENGINEERS
GALVESTON, TEXAS
Station: 565+53.10 to 1075+00.00
CORPUS CHRISTI
La Quinta Channel Junction to Beacon 82

Corpus Christi Ship Channels: La Quinta Channel Junction to Beacon 82

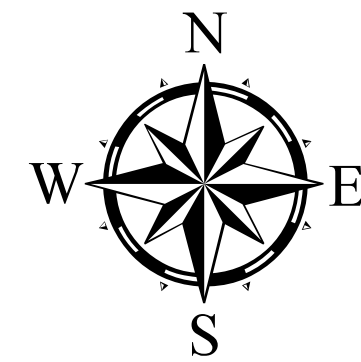


U.S. Army Corps of Engineers
Galveston District



Channel Features	Aids to Navigation		<div>MLLW</div> <div><div>< 20</div><div>20 - 30</div><div>30 - 35</div><div>35 - 40</div><div>40 - 45</div><div>45 - 47</div><div>47 - 50</div><div>50 - 55</div><div>> 55</div></div>	<div>NOTES:</div> <div>1. Horizontal coordinates are referenced to Texas state plane coordinate system, south central zone nad83 us survey feet.</div> <div>2. Elevations are referenced to mean lower low tide (MLLW) datum.</div> <div>3. This project was designed by the galveston district of the u.s. army corps of engineers. The initials and signatures and registration designations of individuals appear on these project documents within the scope of their employment as required by 47110-1-8152.</div> <div>4. The information depicted on this survey map represents the results of surveys made on the dates indicated and can only be considered as indicating the general conditions existing at that time. These conditions are subject to rapid change due to shoaling events. A prudent mariner should not rely exclusively on the information provided here. Required by 33 cfr 209.325</div> <div>5. For the most up to date information please check our website at: http://www.svg.usace.army.mil/Missions/Navigation/Hydrographic/Surveys/</div> <div>Service Layer Credits: World Topographic Map: Texas Parks & Wildlife, Esri, HERE, Garmin, INCREMENT P, USGS, METI/NASA, NGA, EPA, USDA</div> <div>World Imagery: Maxar</div> <div>World Ocean Base: Esri, GEBCO, Garmin, NaturalVue</div>	Additional Combined Survey Dates and Stationing: COMB_SURV_INFO_HERE		Coordinate System: NAD 1983 StatePlane Texas South FIPS 4205 Feet Projection: Lambert Conformal Conic
	<div><div><div><div></div></div></div><div><div><div></div></div></div></div> <div>Channel Center Line</div>	<div><div><div><div></div></div></div><div><div><div></div></div></div></div> <div>Red Side Aids</div>			<div>Dredging Reach Extent</div> <div><div>0</div><div>0.3</div><div>0.6</div><div>1.2</div></div> <div>Miles</div>		
	<div><div><div><div></div></div></div><div><div><div></div></div></div></div> <div>Channel Toe</div>	<div><div><div><div></div></div></div><div><div><div></div></div></div></div> <div>Lights</div>			<div>Hydrographic Survey Extent</div> <div><div>0</div><div>255</div><div>510</div><div>1,020</div></div> <div>Feet</div>		
<div><div><div><div></div></div></div><div><div><div></div></div></div></div> <div>Channel Dimensions</div>							

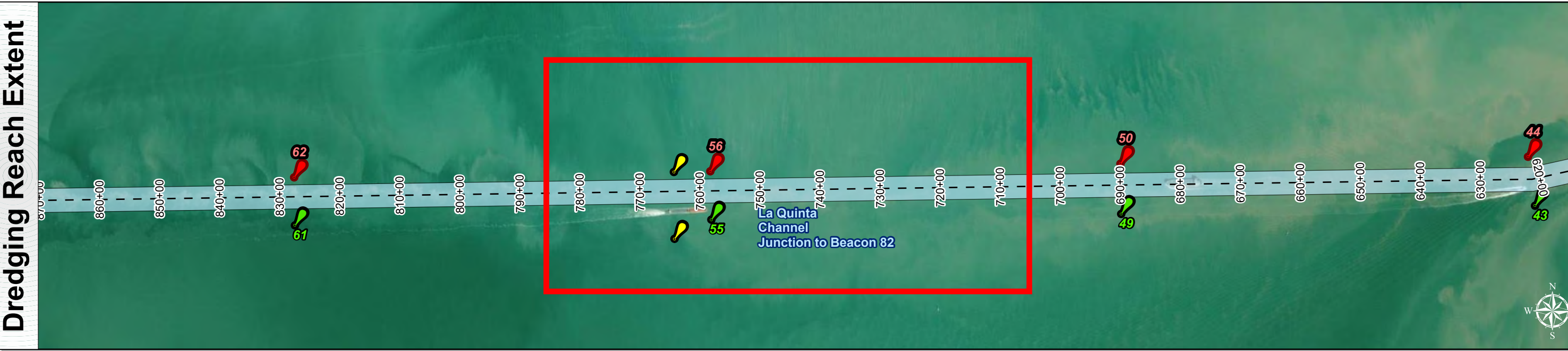
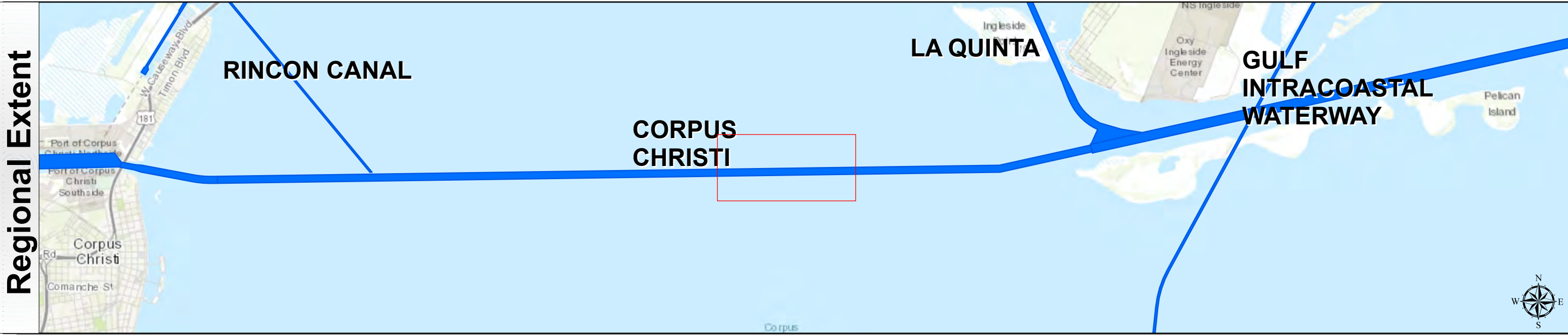
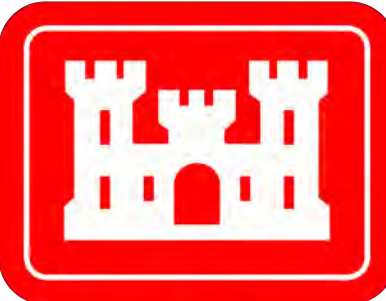
Latest Survey Collection Date: 24 February 2024	Authorized Depth: -54ft.
Document Page: 2 of 7	Side Slope Ratio: 1:3 (Rise : Run)
Scale: 1:3,000	Website Index Number: 16
Mapped by: M3AOXPAC	PDF Print Date: 2/29/2024
Additional Imagery info:	



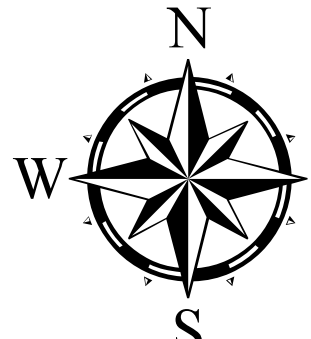
HYDROGRAPHIC SURVEY
U.S. ARMY ENGINEER DISTRICT
CORPS OF ENGINEERS
GALVESTON, TEXAS

Station: 565+53.10 to 1075+00.00
CORPUS CHRISTI
La Quinta Channel Junction to Beacon 82

Corpus Christi Ship Channels: La Quinta Channel Junction to Beacon 82













Latest Survey Collection Date: 24 February 2024	Authorized Depth: -54ft.	
Document Page: 3 of 7	Website Index Number: 17	Side Slope Ratio: 1:3 (Rise : Run)
Scale: 1:3,000		PDF Print Date: 2/29/2024
Mapped by: M3AOXPAC		
Additional Imagery info:		

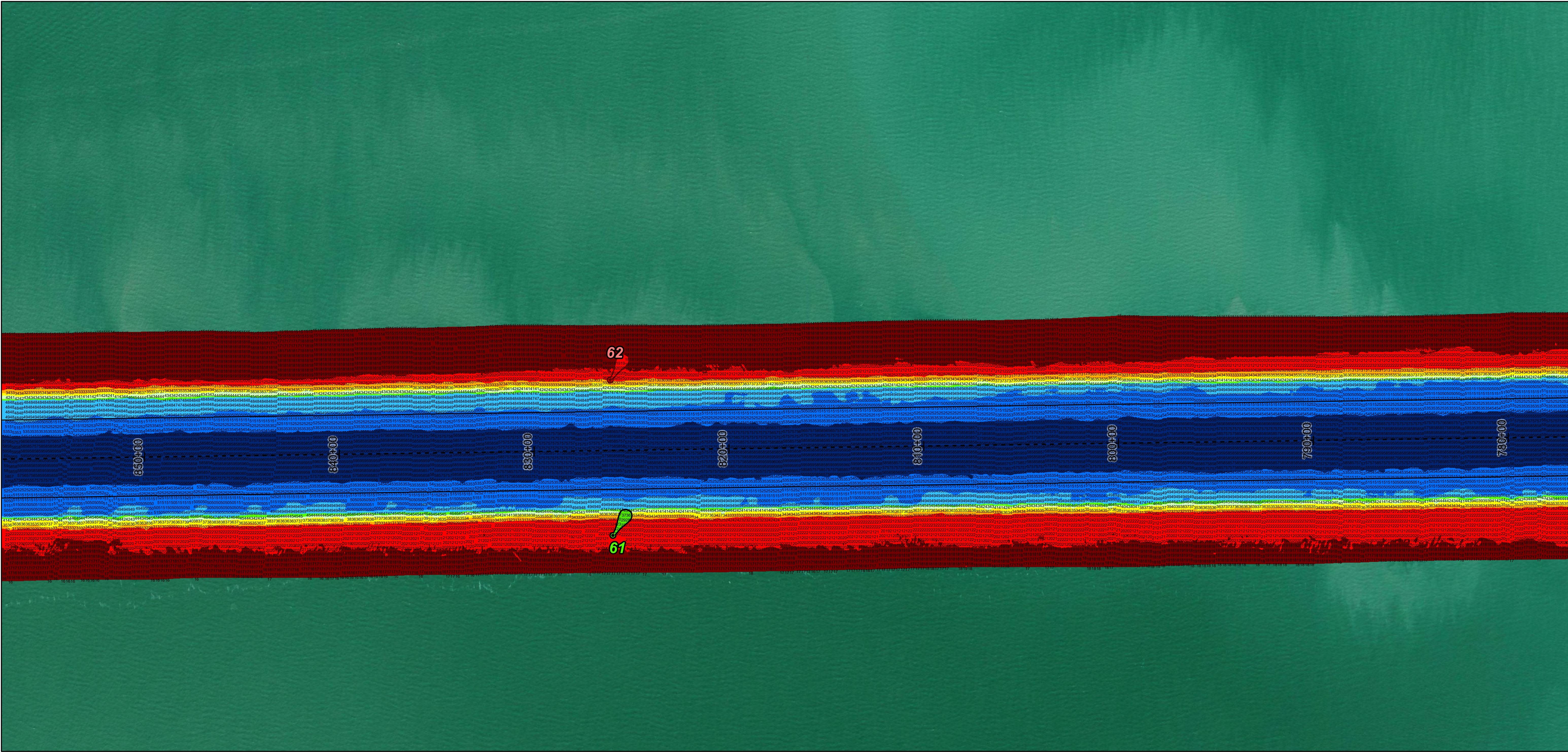
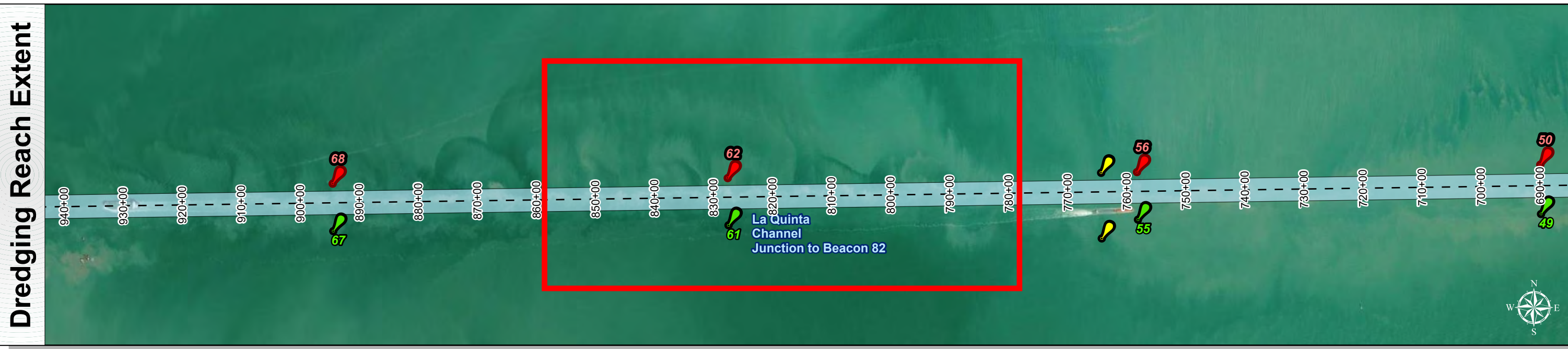
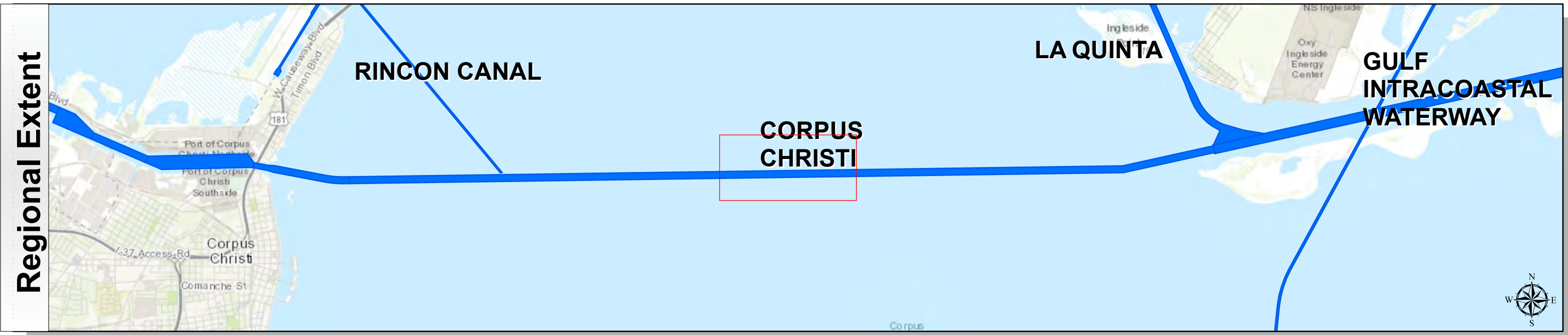


HYDROGRAPHIC SURVEY
U.S. ARMY ENGINEER DISTRICT
CORPS OF ENGINEERS
GALVESTON, TEXAS

Station: 565+53.10 to 1075+00.00
CORPUS CHRISTI
La Quinta Channel Junction to Beacon 82

Channel Features	<div> <div>  Green Side Aids </div> <div>  Red Side Aids </div> <div>  Lights </div> </div> <div>  Channel Center Line </div> <div>  Channel Toe </div> <div>  Channel Dimensions </div>	<div> <div>  MLLW </div> <div>  </div> </div>	<div> <div> <p>NOTES:</p> <ol style="list-style-type: none"> Horizontal coordinates are referenced to Texas state plane coordinate system, south central zone nad83 us survey feet. Elevations are referenced to mean lower low tide (MLLW) datum. This project was designed by the galveston district of the u.s. army corps of engineers. The initials and signatures and registration designations of individuals appear on these project documents within the scope of their employment as required by er1110-1-8152. The information depicted on this survey map represents the results of surveys made on the dates indicated and can only be considered as indicating the general conditions existing at that time. These conditions are subject to rapid change due to shoaling events. A prudent mariner should not rely exclusively on the information provided here. Required by 33 cfr 200.329. For the most up to date information please check our website at: http://www.swg.usace.army.mil/Missions/Navigation/Hydrographic/Surveys/ <p>Service Layer Credits: World Topographic Map: Texas Parks & Wildlife, Esri, HERE, Garmin, INCREMENT P, USGS, METINASA, NGA, EPA, USDA World Imagery: Maxar World Ocean Base: Esri, GEBCO, Garmin, NaturalVue</p> </div> </div>	<div> <div> <p>Additional Combined Survey Dates and Stationing:</p> <p>COMB_SURV_INFO_HERE</p> </div> </div>	<div> <div> <p>Coordinate System: NAD 1983 StatePlane Texas South FIPS 4205 Feet Projection: Lambert Conformal Conic</p> </div> <div> <p>Dredging Reach Extent</p>  </div> <div> <p>Hydrographic Survey Extent</p>  </div> </div>
------------------	--	---	---	--	--

Corpus Christi Ship Channels: La Quinta Channel Junction to Beacon 82



Channel Features

- Channel Center Line
- Channel Toe
- Channel Dimensions

Aids to Navigation

- Green Side Aids
- Red Side Aids
- Lights

MLLW

< 20	20 - 30	30 - 35	35 - 40	40 - 45	45 - 47	47 - 50	50 - 55	> 55
------	---------	---------	---------	---------	---------	---------	---------	------

NOTES:

- Horizontal coordinates are referenced to Texas state plane coordinate system, south central zone nad83 us survey feet.
- Elevations are referenced to mean lower low tide (MLLW) datum.
- This project was designed by the galveston district of the u.s. army corps of engineers. The initials and signatures and registration designations of individuals appear on these project documents within the scope of their employment as required by er1110-6152.
- The information depicted on this survey map represents the results of surveys made on the dates indicated and can only be considered as indicating the general conditions existing at that time. These conditions are subject to rapid change due to shoaling events. A prudent mariner should not rely exclusively on the information provided here. Required by 33 of 200.325
- For the most up to date information please check our website at: <http://www.svg.usace.army.mil/Missions/Navigation/HydrographicSurveys/>

Service Layer Credits: World Topographic Map, Texas Parks & Wildlife, Esri, HERE, Garmin, INCREMENT P, USGS, METINASA, NGA, EPA, USDA, World Imagery, Maxar, World Ocean Base, Esri, GEBCO, Garmin, NaturalVue

Additional Combined Survey Dates and Stationing:

COMB_SURV_INFO_HERE

Coordinate System: NAD 1983 StatePlane Texas South FIPS 4205 Feet
Projection: Lambert Conformal Conic

Dredging Reach Extent

0 0.3 0.6 1.2 Miles

Hydrographic Survey Extent

0 255 510 1,020 Feet

Latest Survey Collection Date: 24 February 2024	Authorized Depth: -54ft.
	Side Slope Ratio: 1:3 (Rise : Run)
Document Page: 4 of 7	Website Index Number: 18
Scale: 1:3,000	PDF Print Date: 2/29/2024
Mapped by: M3AOXPAC	
Additional Imagery info:	

HYDROGRAPHIC SURVEY

U.S. ARMY ENGINEER DISTRICT
CORPS OF ENGINEERS
GALVESTON, TEXAS

Station: 565+53.10 to 1075+00.00

CORPUS CHRISTI

La Quinta Channel Junction to Beacon 82

HYDROGRAPHIC SURVEY

U.S. ARMY ENGINEER DISTRICT
CORPS OF ENGINEERS
GALVESTON, TEXAS

Station: 565+53.10 to 1075+00.00

CORPUS CHRISTI

La Quinta Channel Junction to Beacon 82

HYDROGRAPHIC SURVEY

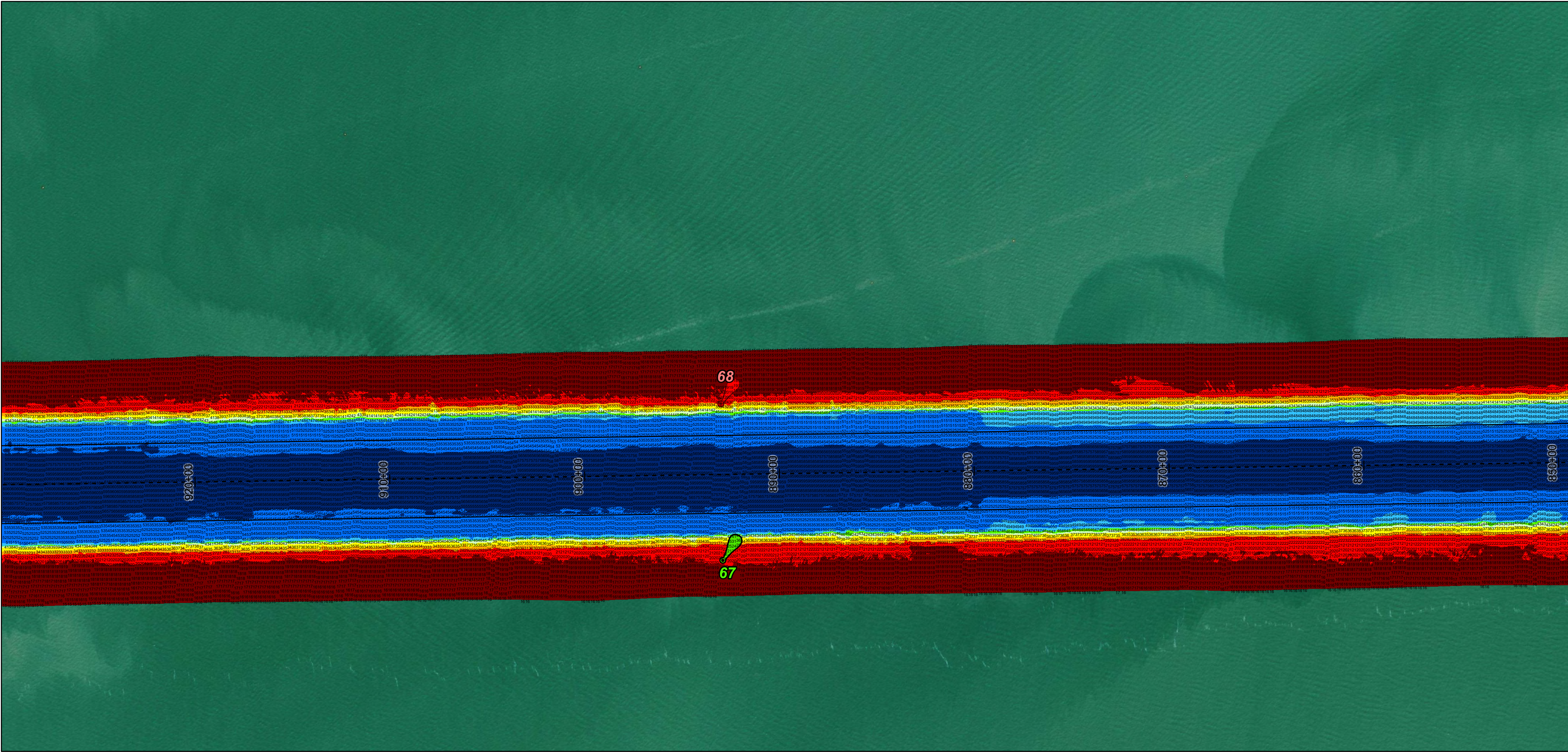
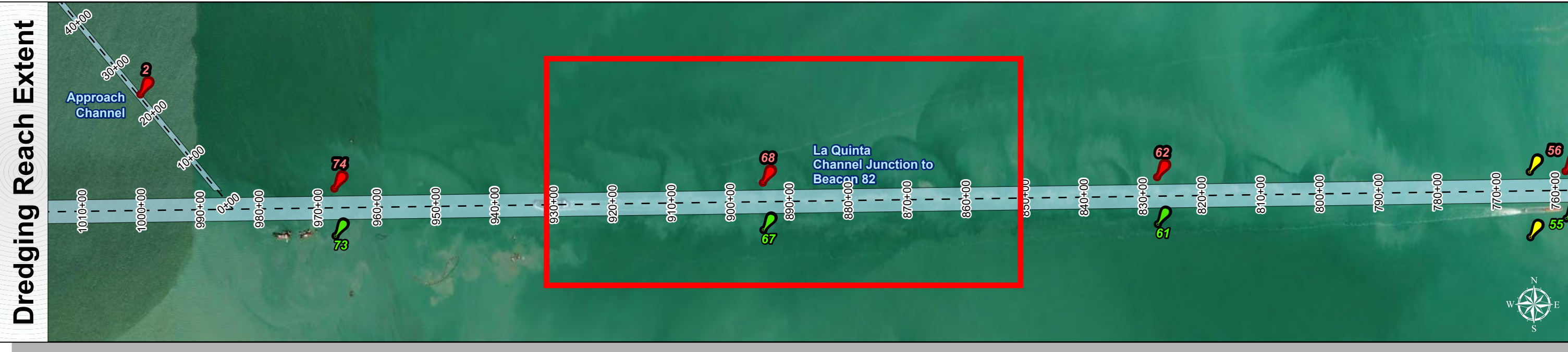
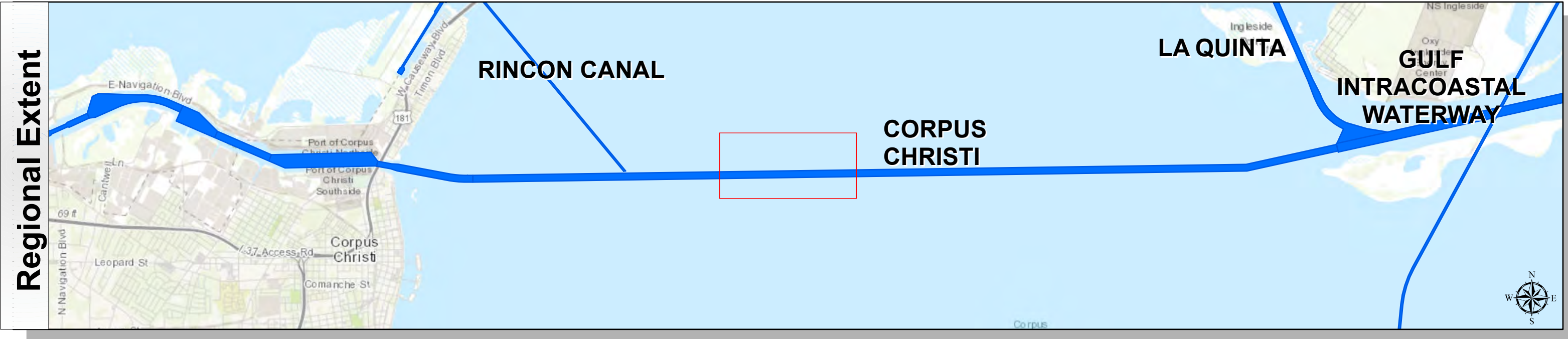
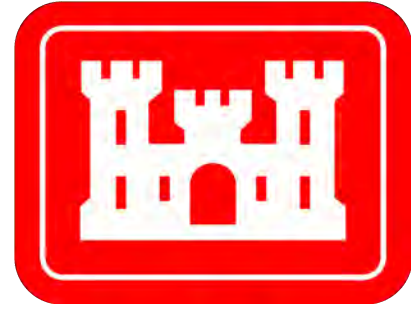
U.S. ARMY ENGINEER DISTRICT
CORPS OF ENGINEERS
GALVESTON, TEXAS

Station: 565+53.10 to 1075+00.00

CORPUS CHRISTI

La Quinta Channel Junction to Beacon 82

Corpus Christi Ship Channels: La Quinta Channel Junction to Beacon 82



Channel Features

Channel Center Line

Channel Toe

Channel Dimensions

Green Side Aids

Red Side Aids

Lights

MLLW

< -20

-20 -30

-30 -35

-35 -40

-40 -45

-45 -47

-47 -50

-50 -55

> -55

NOTES:

1. Horizontal coordinates are referenced to Texas state plane coordinate system, south central zone nad83 us survey feet.

2. Elevations are referenced to mean lower low tide (MLLW) datum.

3. This project was designed by the Galveston District of the U.S. Army Corps of Engineers. The initials and signatures and registration designations of individuals appear on these project documents within the scope of their employment as required by 47 CFR 111.01-0112.

4. The information depicted on this survey map represents the results of surveys made on the dates indicated and can only be considered as indicating the general conditions existing at that time. These conditions are subject to rapid change due to shoaling events. A prudent mariner should not rely exclusively on the information provided here. Required by 33 of 200.325

5. For the most up to date information please check our website at: <http://www.swg.usace.army.mil/Missions/Navigation/HydrographicSurveys/>

Service Layer Credits: World Topographic Map, Texas Parks & Wildlife, Esri, HERE, Garmin, INCREMENT P, USGS, METINFASA, NGA, EPA, USDA, World Imagery, Maxar, World Ocean Base, Esri, GEBCO, Garmin, NaturalVue

Additional Combined Survey Dates and Stationing:

COMB_SURV_INFO_HERE

Coordinate System: NAD 1983 StatePlane Texas South FIPS 4205 Feet

Projection: Lambert Conformal Conic

Dredging Reach Extent

0

0.3

0.6

1.2

Miles

Hydrographic Survey Extent

0

255

510

1,020

Feet

HYDROGRAPHIC SURVEY

U.S. ARMY ENGINEER DISTRICT

CORPS OF ENGINEERS

GALVESTON, TEXAS

Station: 565+53.10 to 1075+00.00

CORPUS CHRISTI

La Quinta Channel Junction to Beacon 82

Latest Survey Collection Date: 24 February 2024

Document Page: 5 of 7

Scale: 1:3,000

Mapped by: M3AOXPAC

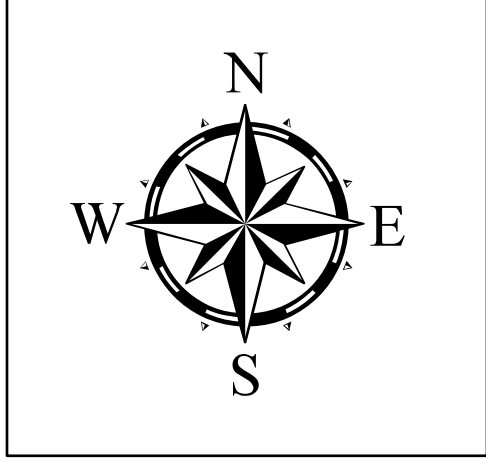
Additional Imagery info:

Authorized Depth: -54ft.

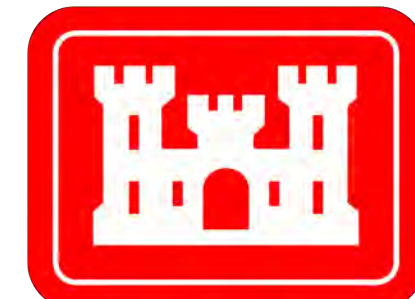
Side Slope Ratio: 1:3 (Rise : Run)

Website Index Number: 19

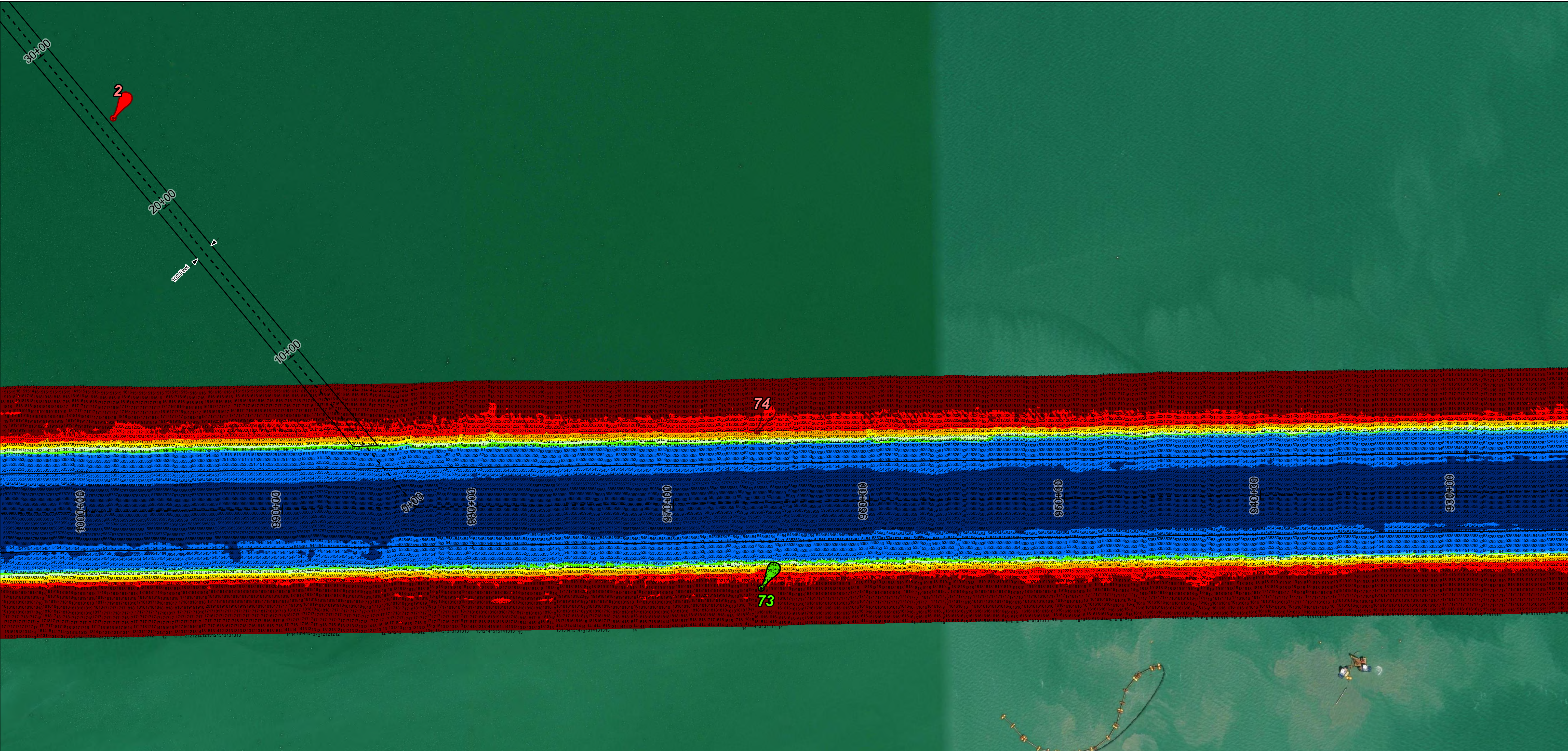
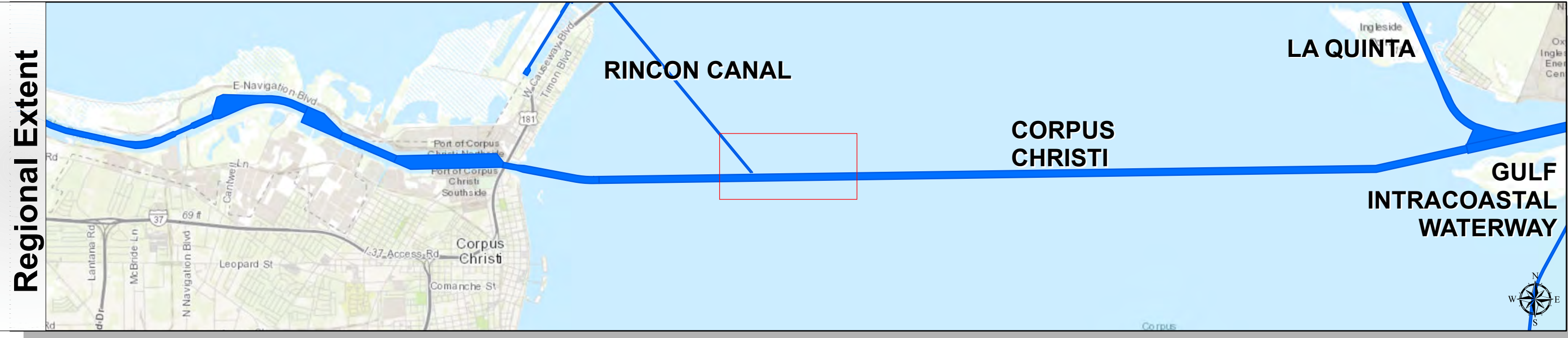
PDF Print Date: 2/29/2024



Corpus Christi Ship Channels: La Quinta Channel Junction to Beacon 82



U.S. Army Corps of Engineers
Galveston District



Channel Features

- Channel Center Line
- Channel Toe
- Channel Dimensions

Aids to Navigation

- Green Side Aids
- Red Side Aids
- Lights

MLLW

< 20	20 - 30	30 - 35	35 - 40	40 - 45	45 - 47	47 - 50	50 - 55	> 55
Red	Orange	Yellow	Light Green	Green	Dark Green	Blue	Dark Blue	Black

NOTES:

- Horizontal coordinates are referenced to Texas state plane coordinate system, south central zone nad83 us survey feet.
- Elevations are referenced to mean lower low tide (MLLW) datum.
- This project was designed by the galveston district of the u.s. army corps of engineers. The initials and signatures and registration designations of individuals appear on these project documents within the scope of their employment as required by 47CFR 110.1-6152.
- The information depicted on this survey map represents the results of surveys made on the dates indicated and can only be considered as indicating the general conditions existing at that time. These conditions are subject to rapid change due to shoaling events. A prudent mariner should not rely exclusively on the information provided here. Required by 33 of 200-325
- For the most up to date information please check our website at: <http://www.svg.usace.army.mil/Missions/Navigation/HydrographicSurveys/>

Service Layer Credits: World Topographic Map, Texas Parks & Wildlife, Esri, HERE, Garmin, INCREMENT P, USGS, METINASA, NOAA, EPA, USDA, World Imagery, Maxar, GEBCO, Garmin, NaturalVue

Additional Combined Survey Dates and Stationing:

COMB_SURV_INFO_HERE

Coordinate System: NAD 1983 StatePlane Texas South FIPS 4205 Feet
Projection: Lambert Conformal Conic

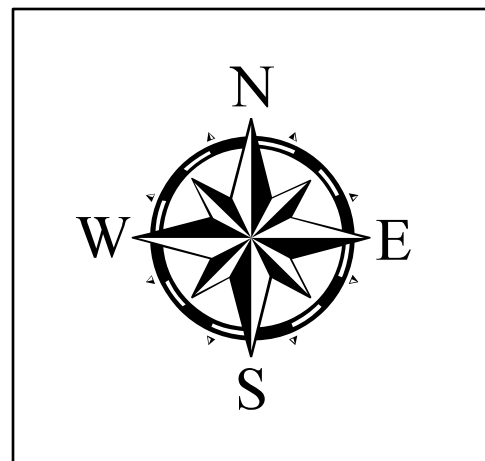
Dredging Reach Extent

0 0.3 0.6 1.2 Miles

Hydrographic Survey Extent

0 255 510 1,020 Feet

Latest Survey Collection Date: 24 February 2024		Authorized Depth: -54ft.
Document Page: 6 of 7	Website Index Number: 20	Side Slope Ratio: 1:3 (Rise : Run)
Scale: 1:3,000		PDF Print Date: 2/29/2024
Mapped by: M3AOXPAC		
Additional Imagery info:		



HYDROGRAPHIC SURVEY

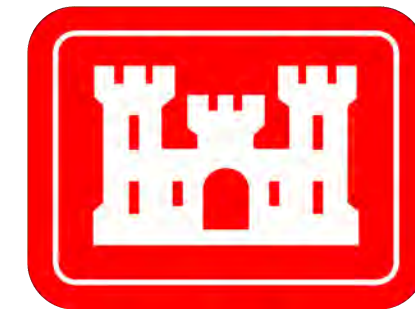
U.S. ARMY ENGINEER DISTRICT
CORPS OF ENGINEERS
GALVESTON, TEXAS

Station: 555+53.10 to 1075+00.00

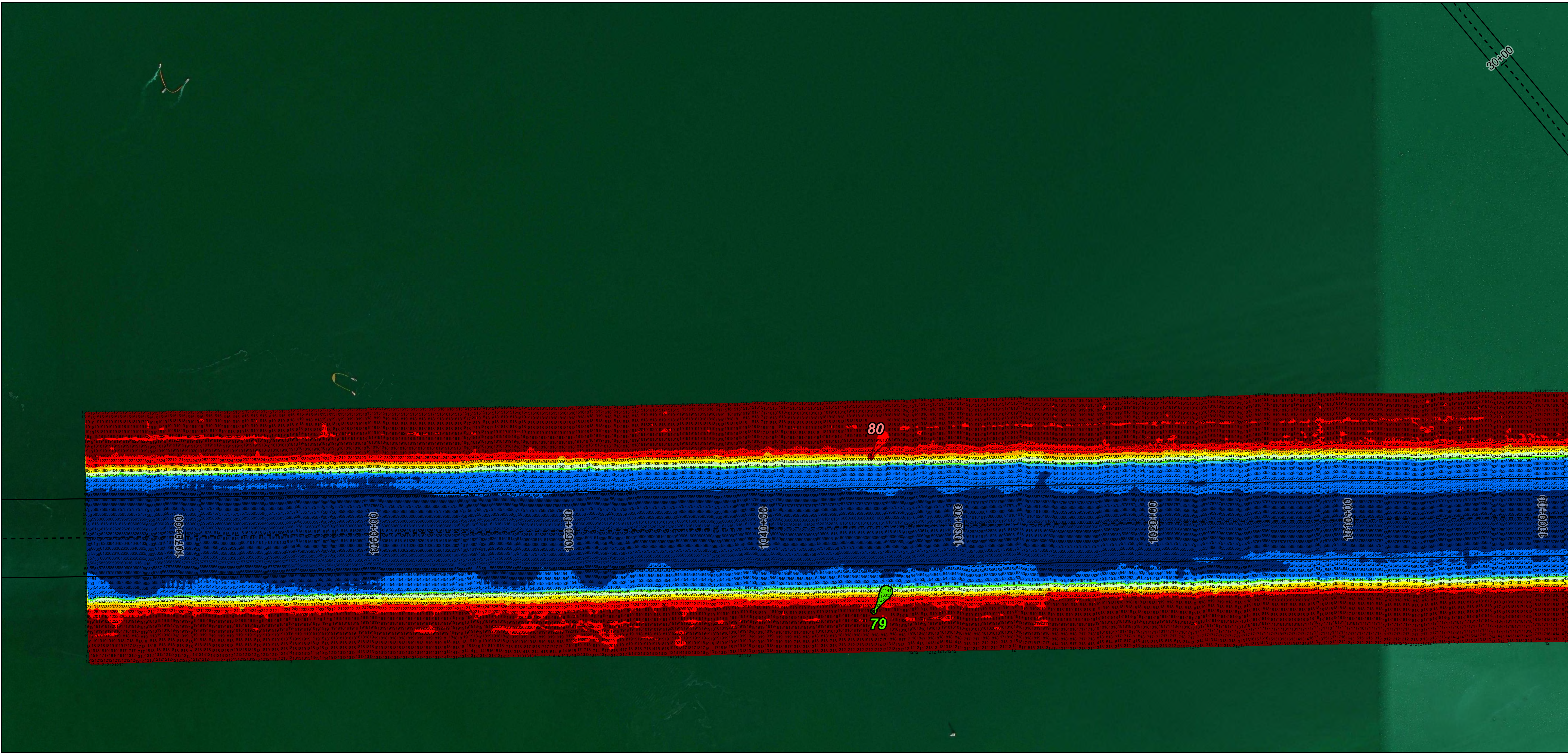
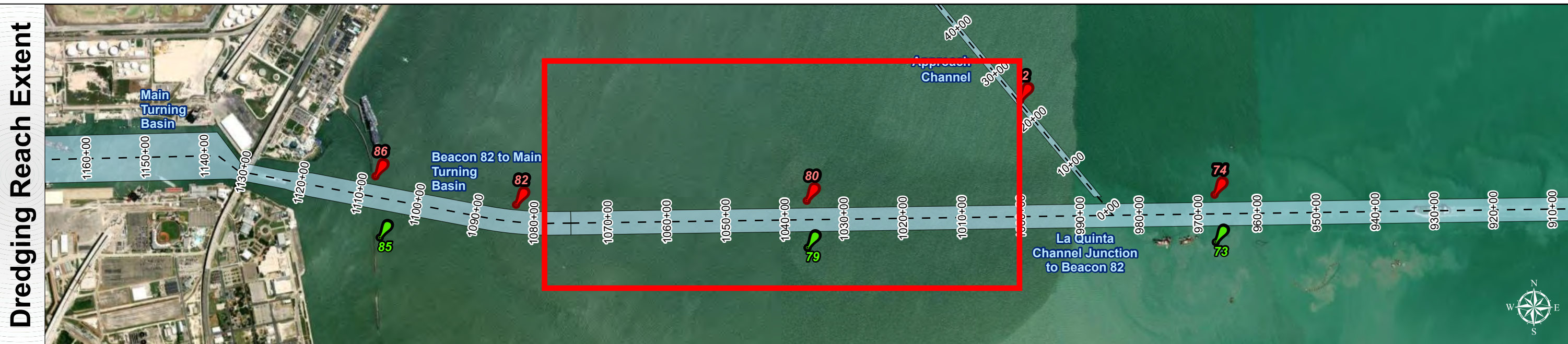
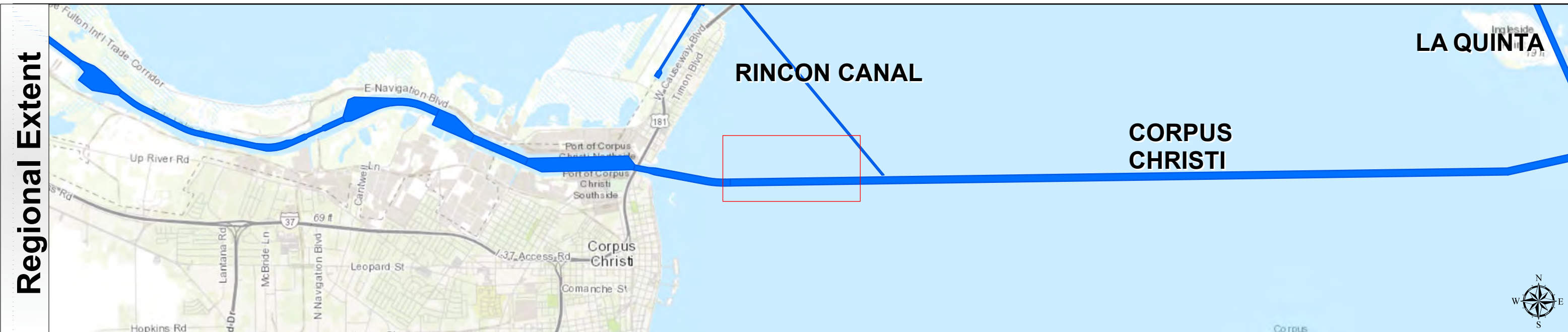
CORPUS CHRISTI

La Quinta Channel Junction to Beacon 82

Corpus Christi Ship Channels: La Quinta Channel Junction to Beacon 82



U.S. Army Corps of Engineers
Galveston District



Channel Features

Channel Center Line

Channel Toe

Channel Dimensions

Aids to Navigation

Green Side Aids

Red Side Aids

Lights

MLLW

< 20

20 - 30

30 - 35

35 - 40

40 - 45

45 - 47

47 - 50

50 - 55

> 55

NOTES:
1. Horizontal coordinates are referenced to Texas state plane coordinate system, south central zone nad83 us survey feet.
2. Elevations are referenced to mean lower low tide (MLLW) datum.
3. This project was designed by the galveston district of the u.s. army corps of engineers. The initials and signatures and registration designations of individuals appear on these project documents within the scope of their employment as required by er1110-6152.
4. The information depicted on this survey map represents the results of surveys made on the dates indicated and can only be considered as indicating the general conditions existing at that time. These conditions are subject to rapid change due to shoaling events. A prudent mariner should not rely exclusively on the information provided here. Required by 33 of 200-325
5. For the most up to date information please check our website at: <http://www.svg.usace.army.mil/Missions/Navigation/HydrographicSurveys/>
Service Layer Credits: World Topographic Map, Texas Parks & Wildlife, Esri, HERE, Garmin, INCREMENT P, USGS, METINASA, NGA, EPA, USDA, World Imagery, Maxar, World Ocean Base, Esri, GEBCO, Garmin, NaturalVue

Additional Combined Survey Dates and Stationing:
COMB_SURV_INFO_HERE

Coordinate System: NAD 1983 StatePlane Texas South FIPS 4205 Feet
Projection: Lambert Conformal Conic

Dredging Reach Extent

0 0.3 0.6 1.2 Miles

Hydrographic Survey Extent

0 255 510 1,020 Feet

Latest Survey Collection Date: 24 February 2024		Authorized Depth: -54ft.	
Document Page: 7 of 7	Website Index Number: 21	Side Slope Ratio: 1:3 (Rise : Run)	
Scale: 1:3,000		PDF Print Date: 2/29/2024	
Mapped by: M3AOXPAC		Additional Imagery info:	
Additional Imagery info:			

HYDROGRAPHIC SURVEY
U.S. ARMY ENGINEER DISTRICT
CORPS OF ENGINEERS
GALVESTON, TEXAS

Station: 555+53.10 to 1075+00.00
CORPUS CHRISTI
La Quinta Channel Junction to Beacon 82