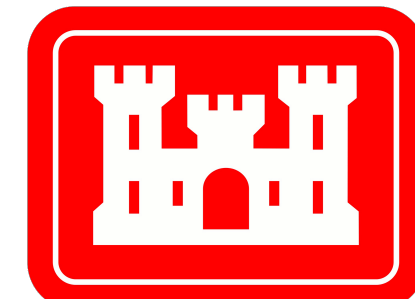
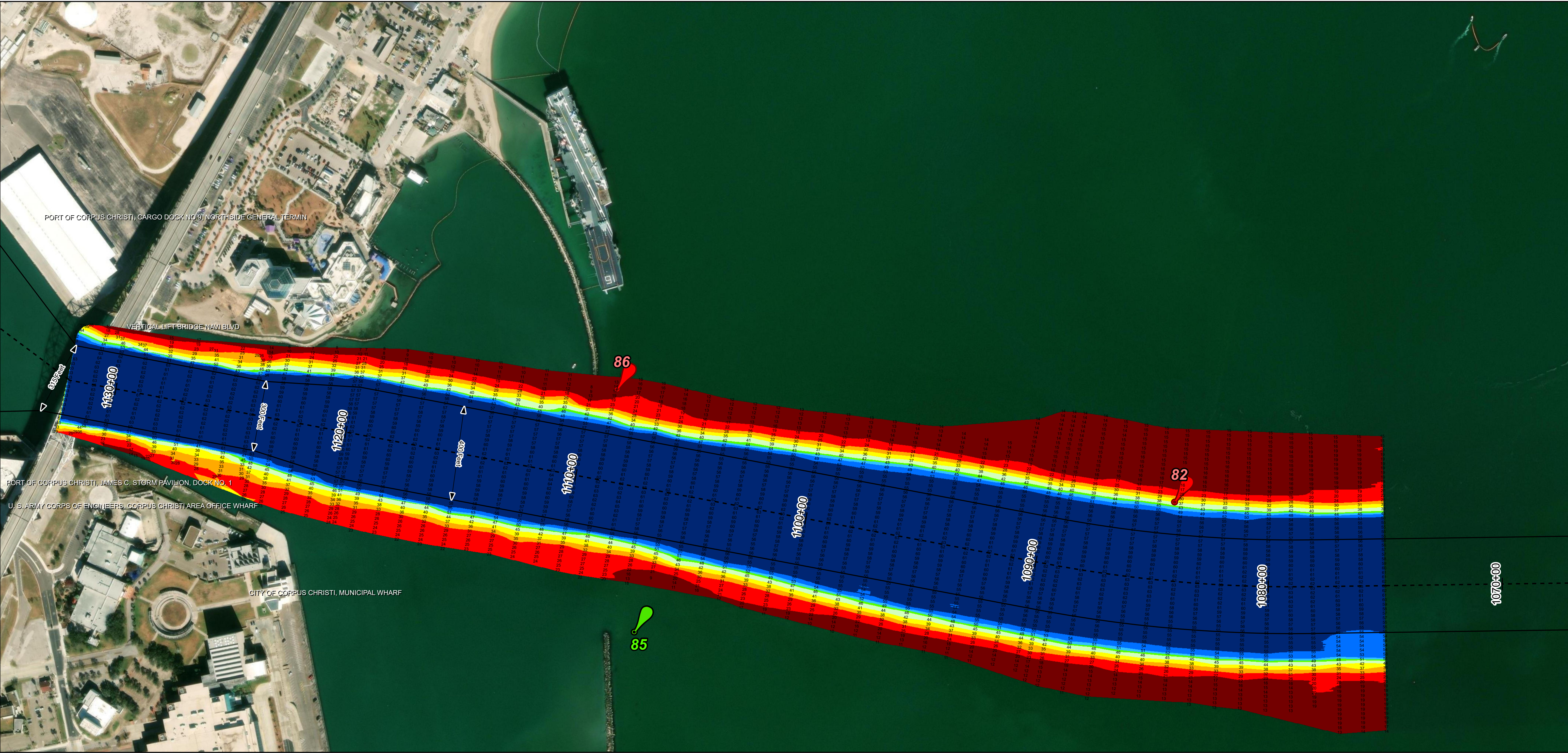
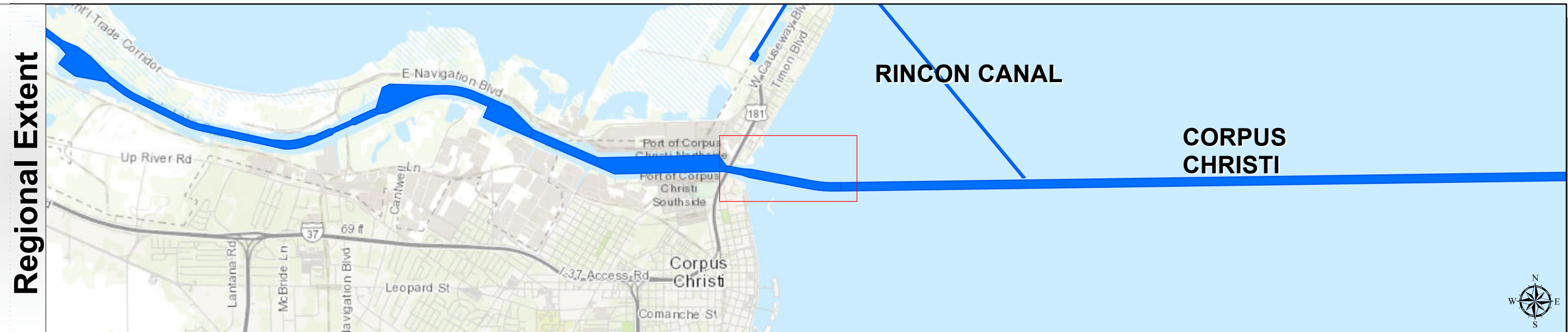


Corpus Christi Ship Channels: Beacon 82 to Main Turning Basin



U.S. Army Corps of Engineers
Galveston District



Channel Features

- Channel Center Line
- Channel Toe
- Channel Station Lines
- Channel Dimensions

Aids to Navigation

- Green Side Aids
- Red Side Aids
- Lights

MLLW

< 20	20 - 30	30 - 35	35 - 40	40 - 45	45 - 47	47 - 50	50 - 55	> 55
Red	Orange	Yellow	Light Green	Green	Dark Green	Blue	Dark Blue	Black

NOTES:

- Horizontal coordinates are referenced to Texas state plane coordinate system, south central zone nad83 us survey feet.
- Elevations are referenced to mean lower low tide (MLLW) datum.
- This project was designed by the Galveston District of the U.S. Army Corps of Engineers. The initials and signatures and registration designations of individuals appear on these project documents within the scope of their employment as required by 47 CFR 111.011-011.02.
- The information depicted on this survey map represents the results of surveys made on the dates indicated and can only be considered as indicating the general conditions existing at that time. These conditions are subject to rapid change due to shoaling events. A prudent mariner should not rely exclusively on the information provided here. Required by 33 CFR 209.325.
- For the most up to date information please check our website at: <http://www.svg.usace.army.mil/Missions/Navigation/HydrographicSurveys/>

Service Layer Credits: World Topographic Map: Texas Parks & Wildlife, Esri, HERE, Garmin, INCREMENT P, USGS, METINASA, NGA, EPA, USDA
World Imagery: Maxar
World Ocean Base: Esri, GEBCO, Garmin, NaturalVue

Additional Combined Survey Dates and Stationing:
Combined surveys: 20231018_CS_107P500_112P375; 20231220_AD_113P198_118P502

Coordinate System: NAD 1983 StatePlane Texas South FIPS 4205 Feet
Projection: Lambert Conformal Conic

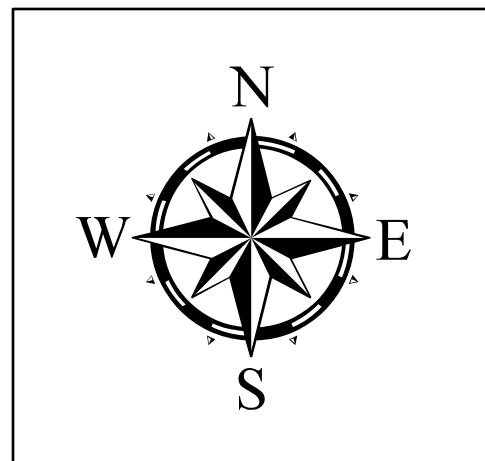
Dredging Reach Extent
0 0.25 0.5 1 Miles

Hydrographic Survey Extent
0 215 430 860 Feet

Hydrographic Survey
U.S. Army Corps of Engineers
Galveston District, Texas

Station: 1075+00 to 1132+01.52
Beacon 82 to Main Turning Basin

Latest Survey Collection Date: 20 December 2023		Authorized Depth: -54ft.
Document Page: 1 of 1	Website Index Number: 22	Side Slope Ratio: 1:3 (Rise : Run)
Scale: 1:2,500	PDF Print Date: 12/22/2023	
Mapped by: m3odnmhg	Additional Imagery info:	



HYDROGRAPHIC SURVEY
U.S. Army Corps of Engineers
Galveston District, Texas

Station: 1075+00 to 1132+01.52
Beacon 82 to Main Turning Basin