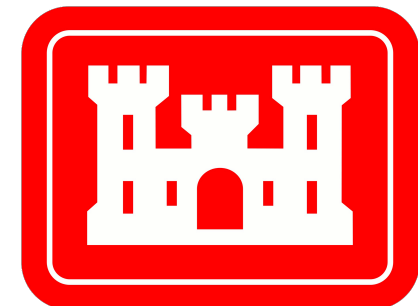


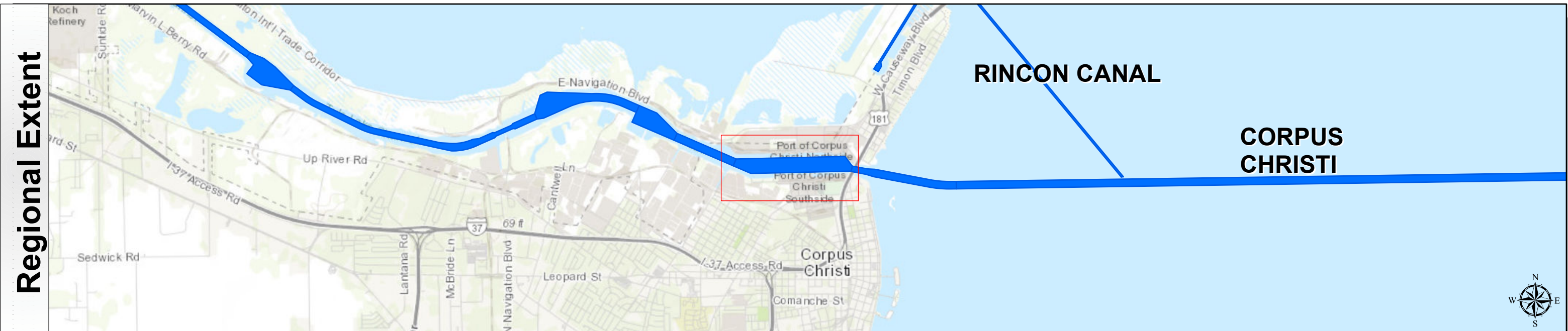
Corpus Christi Ship Channels: Main Turning Basin



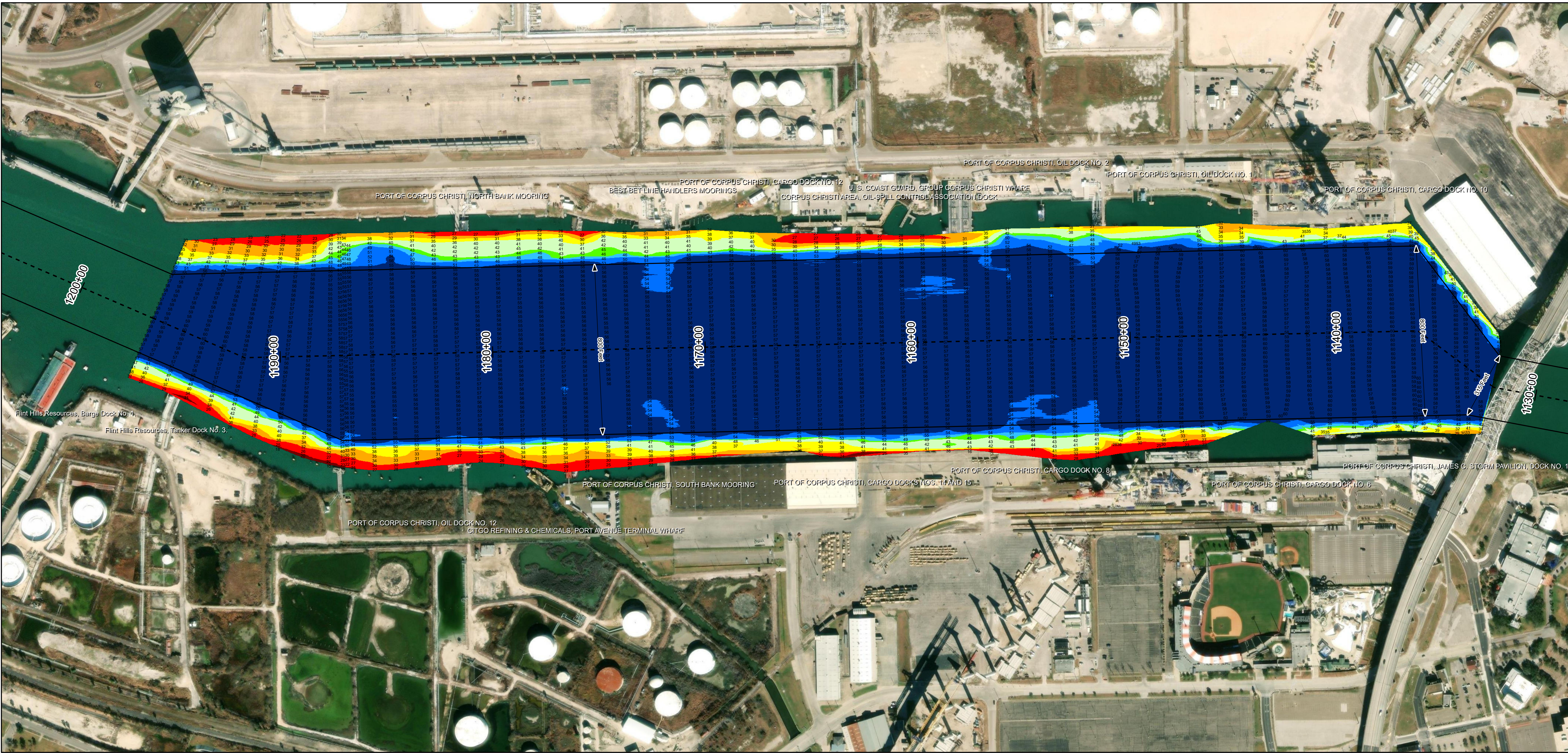
U.S. Army Corps of Engineers
Galveston District



Regional Extent



Dredging Reach Extent



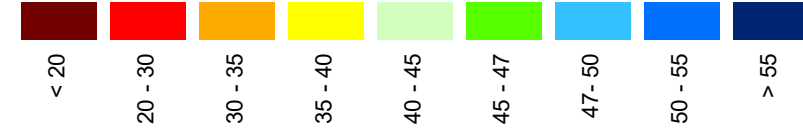
Channel Features

- Channel Center Line
- Channel Toe
- Channel Station Lines
- Channel Dimensions

Aids to Navigation

- Green Side Aids
- Red Side Aids
- Lights

MLLW



NOTES:

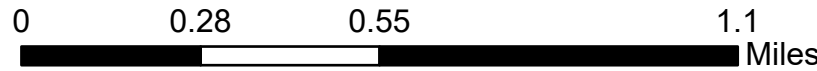
- Horizontal coordinates are referenced to Texas state plane coordinate system, south central zone nad83 us survey feet.
 - Elevations are referenced to mean lower low tide (MLLW) datum.
 - This project was designed by the galveston district of the u.s. army corps of engineers. The initials and signatures and registration designations of individuals appear on these project documents within the scope of their employment as required by er11101-6152.
 - The information depicted on this survey map represents the results of surveys made on the dates indicated and can only be considered as indicating the general conditions existing at that time. These conditions are subject to rapid change due to shoaling events. A prudent mariner should not rely exclusively on the information provided here. Required by 33 or 209.325
 - For the most up to date information please check our website at: <http://www.svg.usace.army.mil/Missions/Navigation/HydrographicSurveys/>
- Service Layer Credits: World Topographic Map: Texas Parks & Wildlife, Esri, HERE, Garmin, INCREMENT P, USGS, MET/NASA, NOAA, EPA, USA, World Imagery: Maxar, World Ocean Base: Esri, GEBCO, Garmin, NaturalVue

Additional Combined Survey Dates and Stationing:

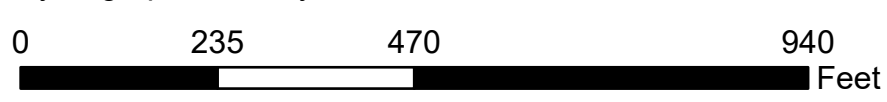
Combined surveys: 20231101_CS_115P000_119P637; 20231220_AD_113P198_115P000

Coordinate System: NAD 1983 StatePlane Texas South FIPS 4205 Feet
Projection: Lambert Conformal Conic

Dredging Reach Extent



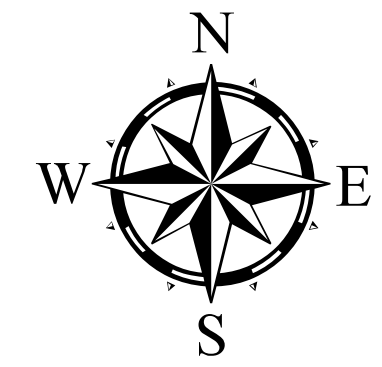
Hydrographic Survey Extent



HYDROGRAPHIC SURVEY

U.S. ARMY ENGINEER DISTRICT
CORPS OF ENGINEERS
GALVESTON, TEXAS

Station: 1132+01.52 to 1196+36.70
CORPUS CHRISTI
Main Turning Basin



Latest Survey Collection Date: 20 December 2023

Document Page: 1 of 1

Website Index Number: 23

Authorized Depth: -54ft.

Side Slope Ratio: 1:2 (Rise : Run)

Scale: 1:2,750

Mapped by: m3odnmhg

Additional Imagery info:

PDF Print Date: 12/22/2023