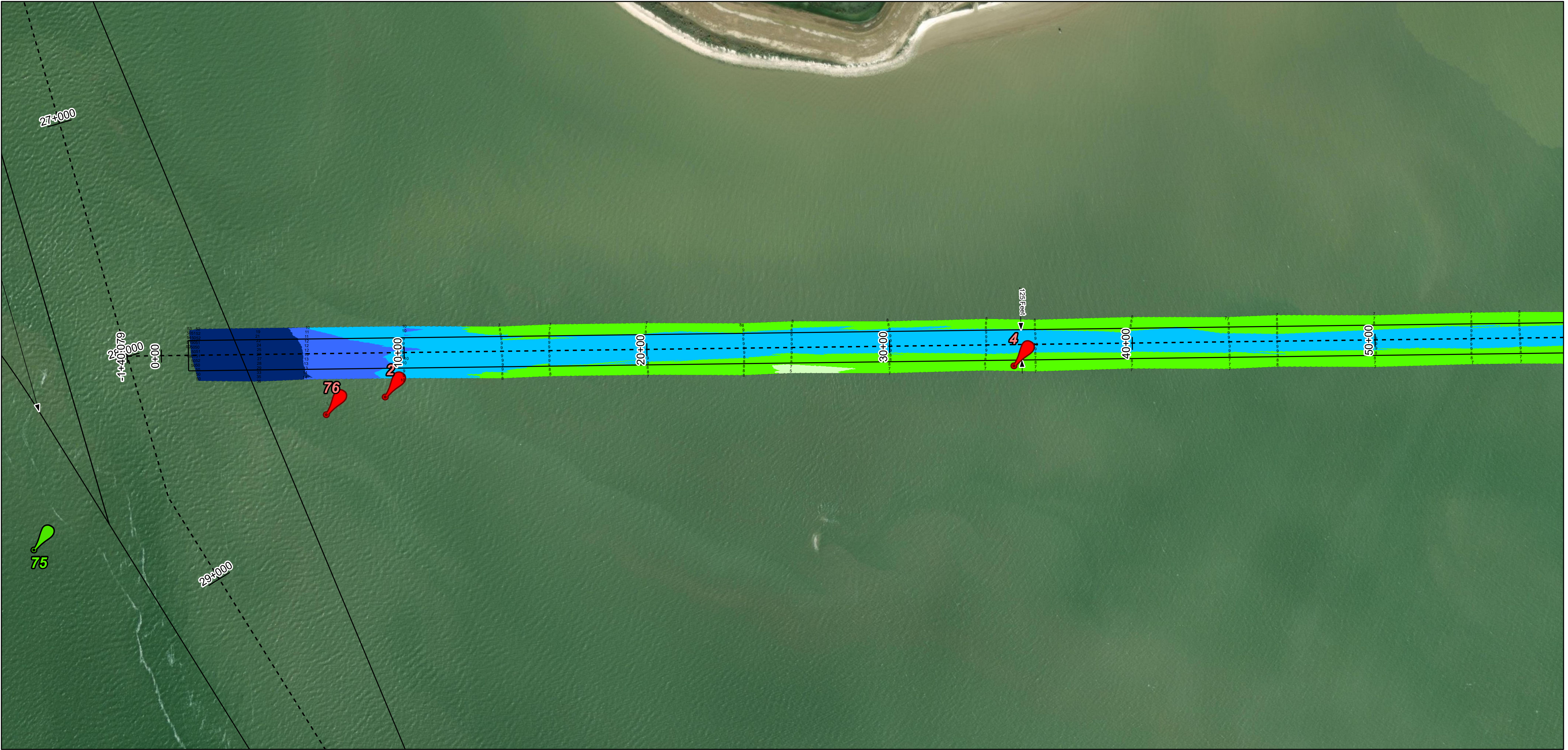
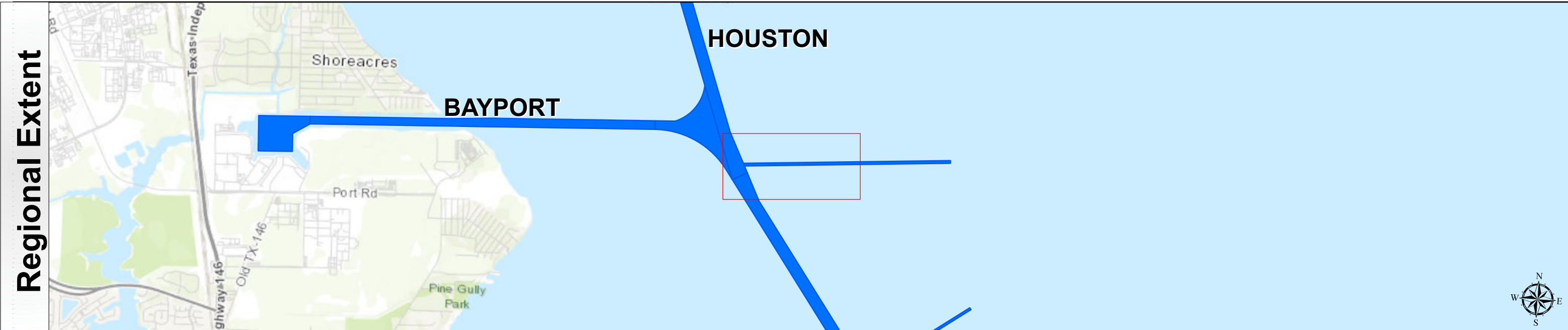
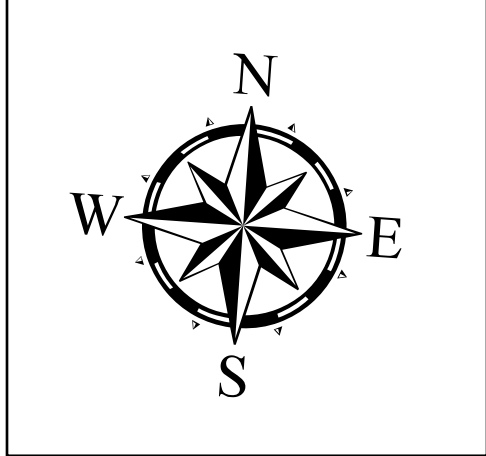


Houston Ship Channel: Five Mile Cut



Latest Survey Collection Date: 03 May 2023		Authorized Depth: -9ft.
Document Page: 1 of 2	Website Index Number: 1	Side Slope Ratio: (Rise : Run)
12/400		PDF Print Date: 11/30/2023
Scale:		
Mapped by: m3odnmnhg		
Additional Imagery info:		








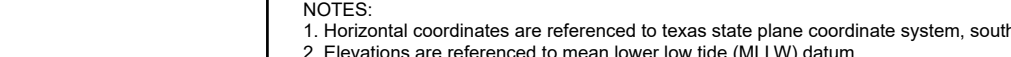


HYDROGRAPHIC SURVEY

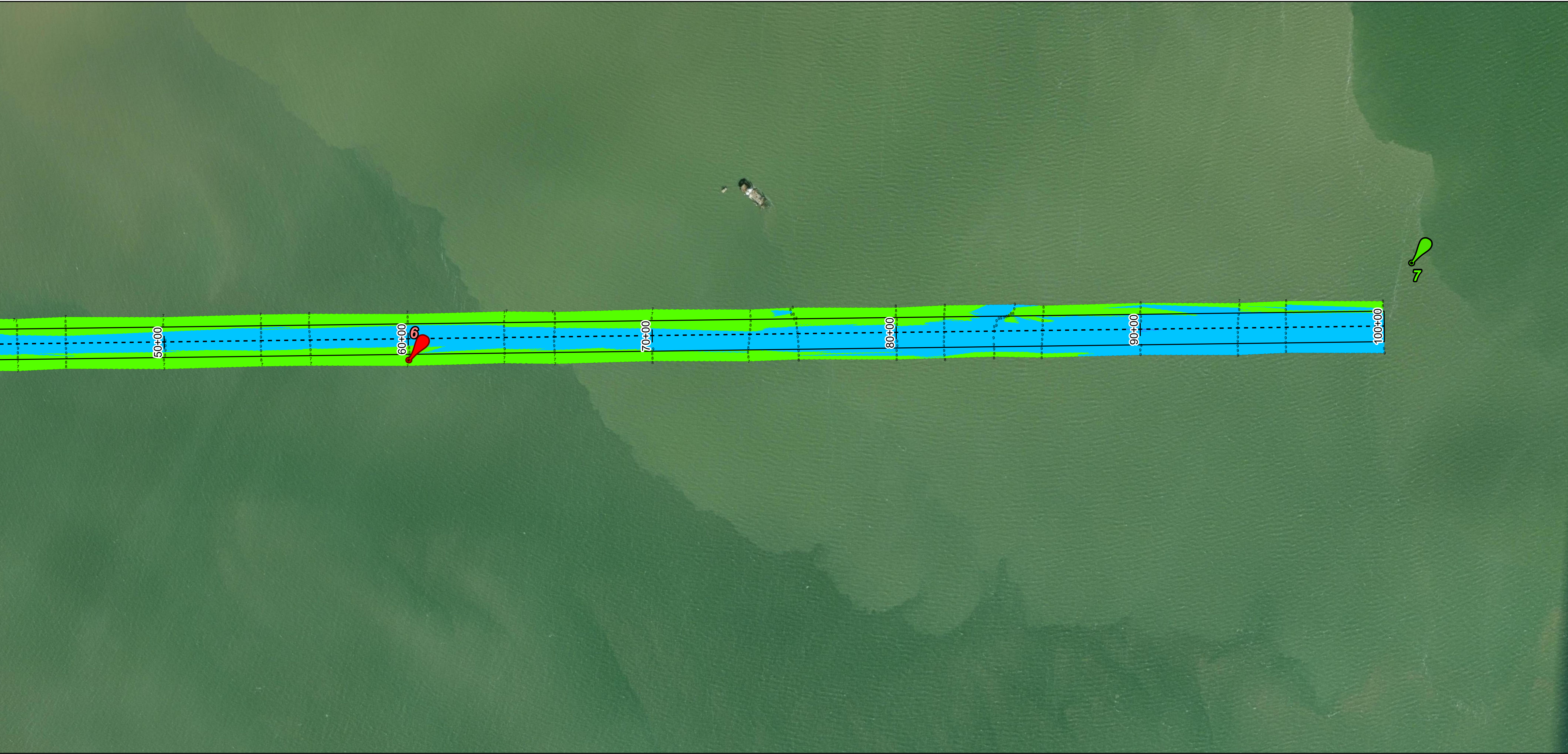
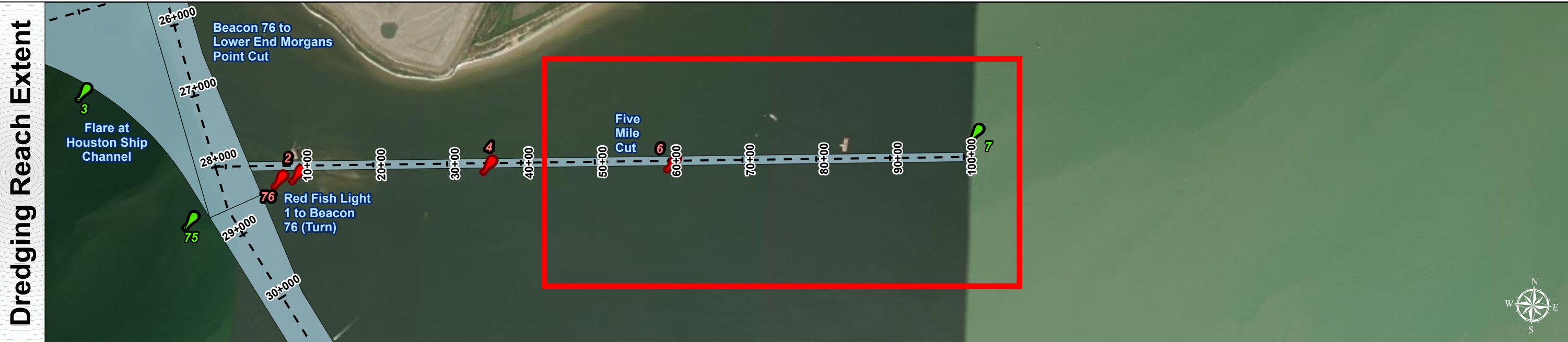
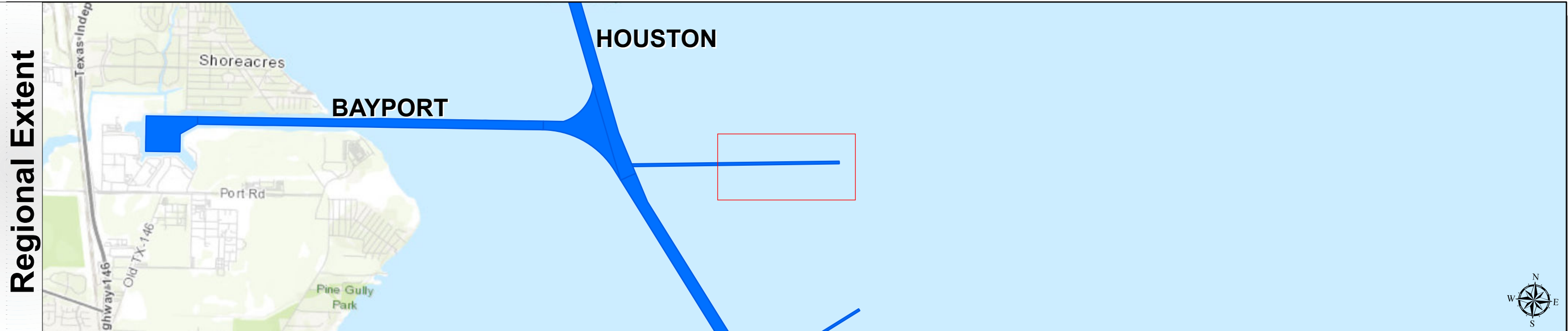
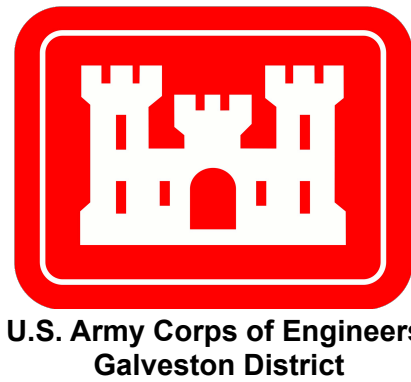
U.S. ARMY ENGINEER DISTRICT
CORPS OF ENGINEERS
GALVESTON, TEXAS

Station: 0+00 to 100+00

HOUSTON
Five Mile Cut

Channel Features  Channel Center Line  Channel Toe  Channel Station Lines  Channel Dimensions	Aids to Navigation  Green Side Aids  Red Side Aids  Lights	 <p>MLLW</p> <p>< 1 1-2 2-3 3-5 5-7 7-9 9-11 11-14 >14</p>	<p>NOTES:</p> <ol style="list-style-type: none"> 1. Horizontal coordinates are referenced to Texas state plane coordinate system, south central zone nad83 us survey feet. 2. Elevations are referenced to mean lower low tide (MLLW) datum. 3. This project was designed by the galveston district of the u.s. army corps of engineers. The initials and signatures and registration designations of individuals appear on these project documents within the scope of their employment as required by e1110-1-8152. 4. The information depicted on this survey map represents the results of surveys made on the dates indicated and can only be considered as indicating the general conditions existing at that time. These conditions are subject to rapid change due to shoaling events. A prudent mariner should not rely exclusively on the information provided here. Required by 33 CFR 209.325 5. For the most up to date information please check our website at: http://www.swg.usace.army.mil/Missions/Navigation/Hydrographic/Surveys/ <p>Service Layer Credits: World, Imagery: Maxar, Microsoft World Topographic Map: City of Houston, IPRs, Texas Parks & Wildlife, Esri, HERE, Garmin, INCREMENT P, USGS, MET/NASA, NOAA, EPA, USDA World Imagery: Maxar World Ocean Base: Esri, GEBCO, Garmin, NaturalVue</p>	<p>Additional Combined Survey Dates and Stationing:</p> <p>COMB_SURV_INFO_HERE</p>	<p>Coordinate System: NAD 1983 StatePlane Texas South Central FIPS 4204 Feet Projection: Lambert Conformal Conic</p> <p>Dredging Reach Extent</p> <p>0 0.25 0.5 1 Miles</p> <p>Hydrographic Survey Extent</p> <p>0 205 410 820 Feet</p>	<div style="writing-mode: vertical-rl; transform: rotate(180deg);"> HYDROGRAPHIC U.S. ARMY CORP OF ENGINEERS Station </div>
--	---	--	--	--	--	--

Houston Ship Channel: Five Mile Cut



Channel Features

- Channel Center Line
- Channel Toe
- Channel Station Lines
- Channel Dimensions

Aids to Navigation

- Green Side Aids
- Red Side Aids
- Lights

MLLW

< 1	1 - 2	2 - 3	3 - 5	5 - 7	7 - 9	9 - 11	11 - 14	> 14
-----	-------	-------	-------	-------	-------	--------	---------	------

NOTES:

- Horizontal coordinates are referenced to Texas state plane coordinate system, south central zone nad83 us survey feet.
- Elevations are referenced to mean lower low tide (MLLW) datum.
- This project was designed by the Galveston District of the U.S. Army Corps of Engineers. The initials and signatures and registration designations of individuals appear on these project documents within the scope of their employment as required by 47 CFR 111.115-111.122.
- The information depicted on this survey map represents the results of surveys made on the dates indicated and can only be considered as indicating the general conditions existing at that time. These conditions are subject to rapid change due to shoaling events. A prudent mariner should not rely exclusively on the information provided here. Required by 33 CFR 209.325.
- For the most up to date information please check our website at: <http://www.svg.usace.army.mil/Missions/Navigation/HydrographicSurveys/>

Service Layer Credits: World Imagery: Maxar, Microsoft
World Topographic Map: City of Houston, HPB, Texas Parks & Wildlife, Esri, HERE, Garmin, INCREMENT P, USGS, METINASA, NGA, EPA, USDA
World Imagery: Maxar
World Ocean Base: Esri, GEBCO, Garmin, NaturalVue

Additional Combined Survey Dates and Stationing:

COMB_SURV_INFO_HERE

Coordinate System: NAD 1983 StatePlane Texas South Central FIPS 4204 Feet
Projection: Lambert Conformal Conic

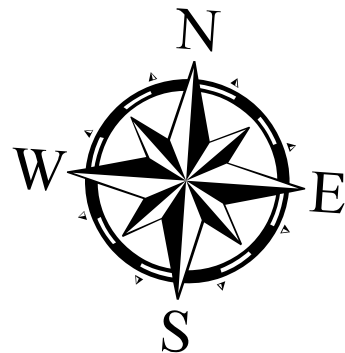
Dredging Reach Extent

0 0.25 0.5 1 Miles

Hydrographic Survey Extent

0 205 410 820 Feet

Latest Survey Collection Date: 03 May 2023		Authorized Depth: -9ft.
Document Page: 2 of 2	Website Index Number: 2	Side Slope Ratio: (Rise : Run)
Scale: 1:2,400		PDF Print Date: 11/30/2023
Mapped by: m3odnmhg		
Additional Imagery info:		



HYDROGRAPHIC SURVEY
U.S. ARMY ENGINEER DISTRICT
CORPS OF ENGINEERS
GALVESTON, TEXAS
Station: 0+00 to 100+00
HOUSTON
Five Mile Cut