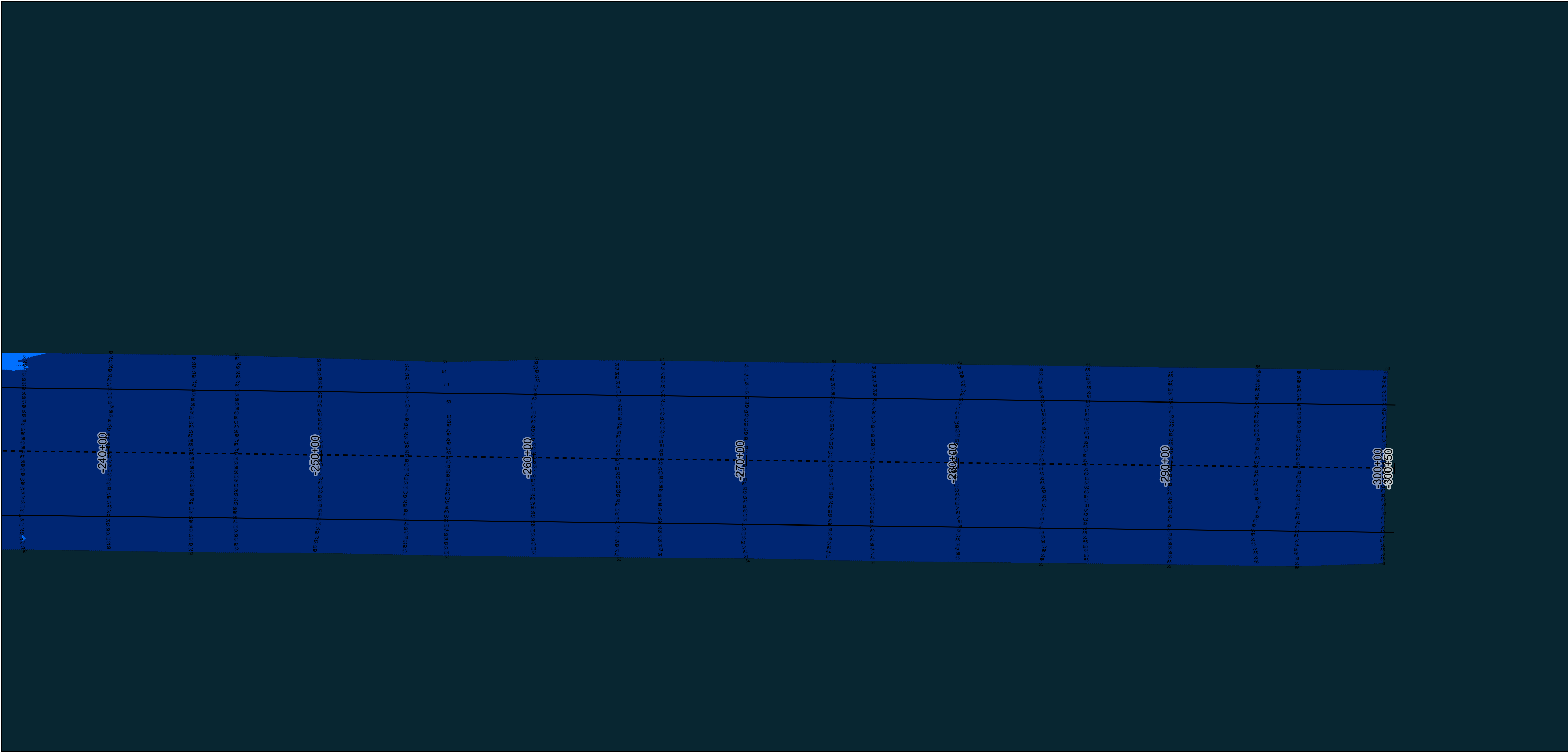
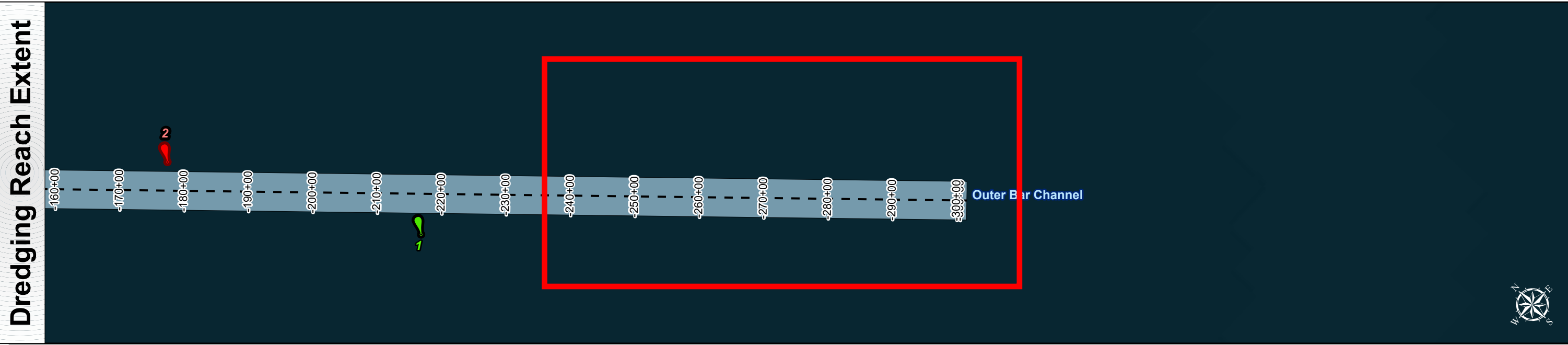
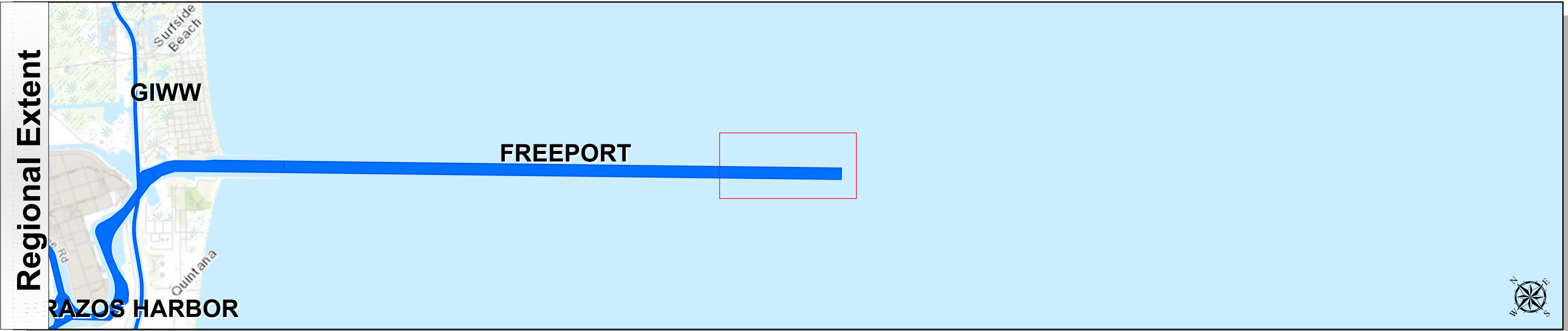


# Freeport Ship Channel: Outer Bar Channel



**Channel Features**

- Channel Center Line
- Channel Toe
- Channel Dimensions

**Aids to Navigation**

- Green Side Aids
- Red Side Aids
- Lights

**MLLW**

≤ 30 30 - 40 40 - 42 42 - 44 44 - 46 46 - 48 48 - 50 50 - 52 > 52

**NOTES:**

- Horizontal coordinates are referenced to Texas state plane coordinate system, south central zone nad83 us survey feet.
- Elevations are referenced to mean lower low tide (MLLW) datum.
- This project was designed by the Galveston District of the U.S. Army Corps of Engineers. The initials and signatures and registration designations of individuals appear on these project documents within the scope of their employment as required by 47 CFR 111.115-111.122.
- The information depicted on this survey map represents the results of surveys made on the dates indicated and can only be considered as indicating the general conditions existing at that time. These conditions are subject to rapid change due to shoaling events. A prudent mariner should not rely exclusively on the information provided here. Required by 33 CFR 209.325.
- For the most up to date information please check our website at: <http://www.svg.usace.army.mil/Missions/Navigation/HydrographicSurveys/>

Service Layer Credits: World Topographic Map: Brazoria County, Texas Parks & Wildlife, Esri, HERE, Garmin, INCREMENT P, USGS, METI/NASA, NGA, EPA, USDA  
World Imagery: Maxar  
World Ocean Base: Esri, GEBCO, Garmin, NaturalVue

**Additional Combined Survey Dates and Stationing:**

COMB\_SURV\_INFO\_HERE

**Coordinate System:** NAD 1983 StatePlane Texas South Central FIPS 4204 Feet  
**Projection:** Lambert Conformal Conic

**Dredging Reach Extent**

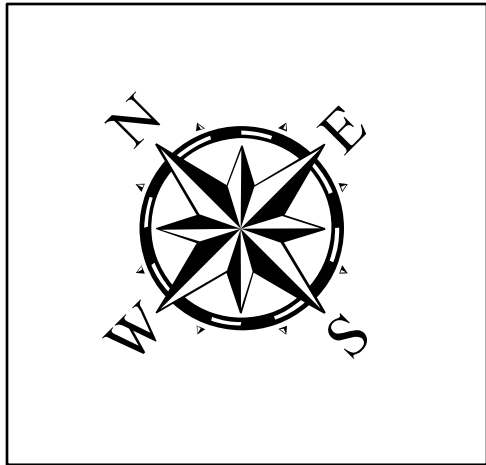
0 0.28 0.55 1.1 Miles

**Hydrographic Survey Extent**

0 235 470 940 Feet

U.S. Army Corps of Engineers  
Galveston District

Latest Survey Collection Date: 01 February 2024		Authorized Depth: -48ft.
Document Page: 1 of 5	Website Index Number: 1	Side Slope Ratio: (Rise : Run)
Scale: 1:2,750		PDF Print Date: 2/26/2024
Mapped by: M3AOXPAC		
Additional Imagery info:		



**HYDROGRAPHIC SURVEY**

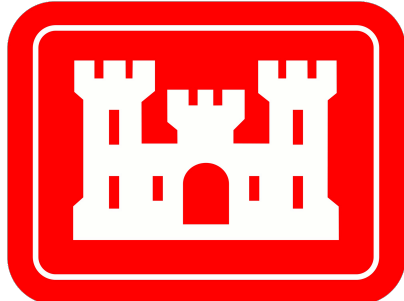
U.S. ARMY ENGINEER DISTRICT  
CORPS OF ENGINEERS  
GALVESTON, TEXAS

**Station: -260+00 to 0+00**

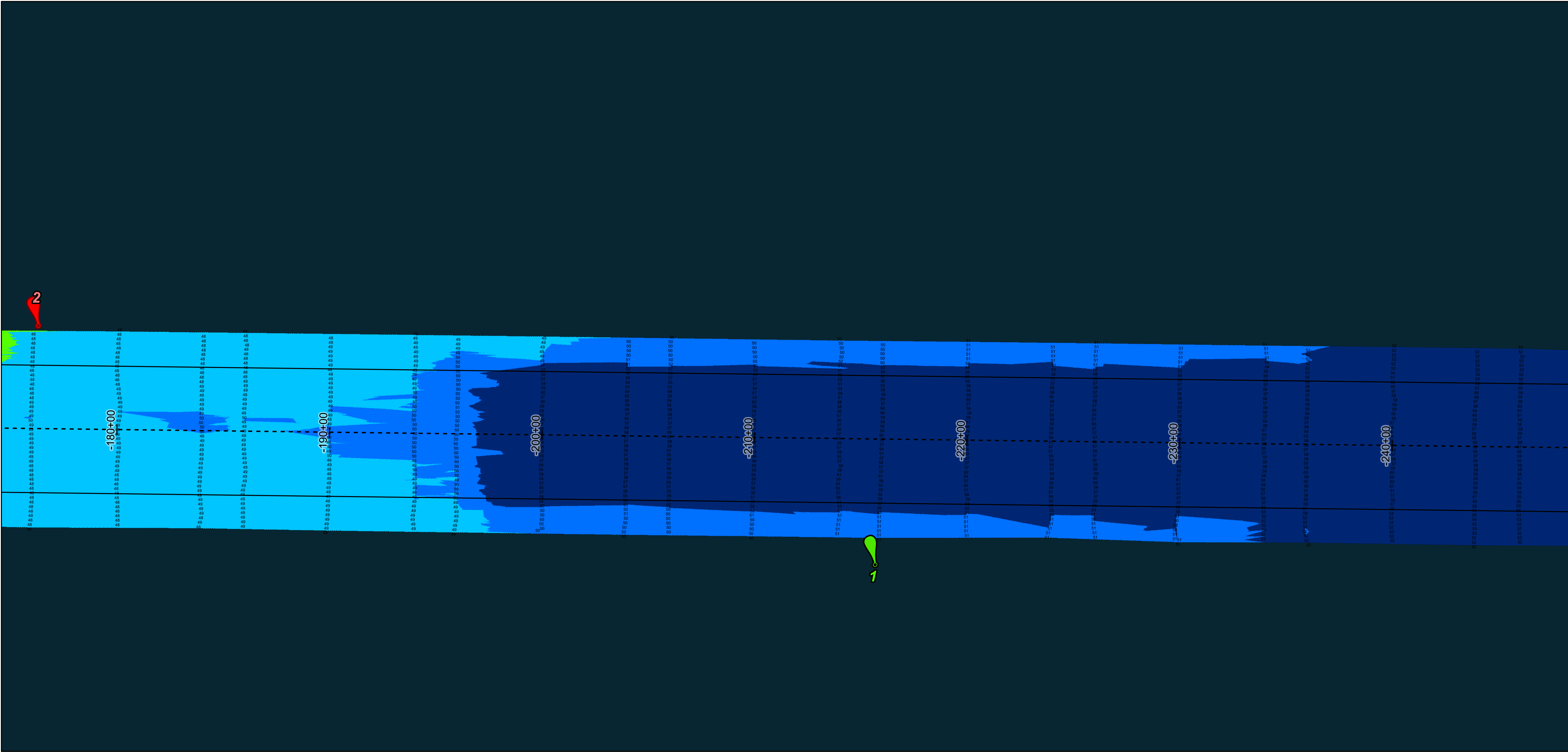
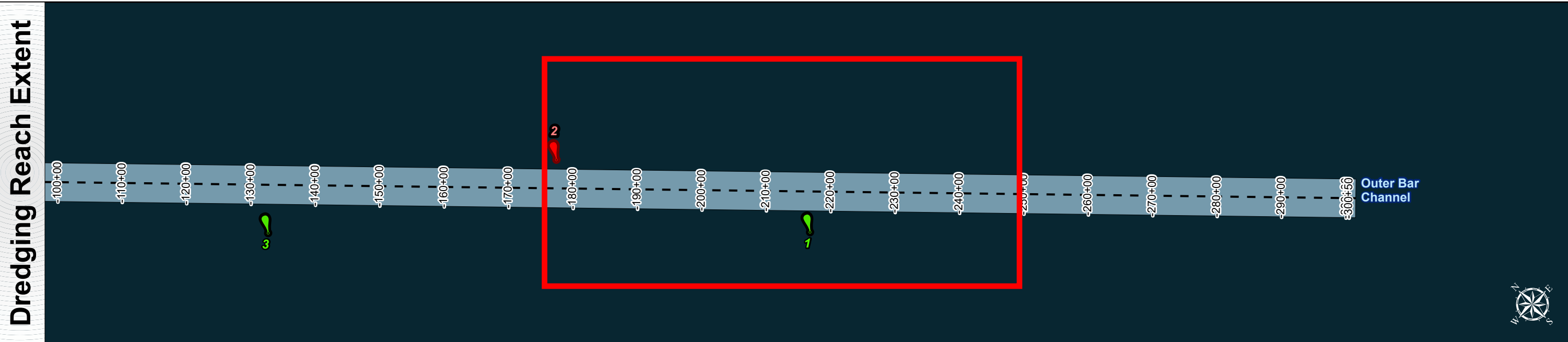
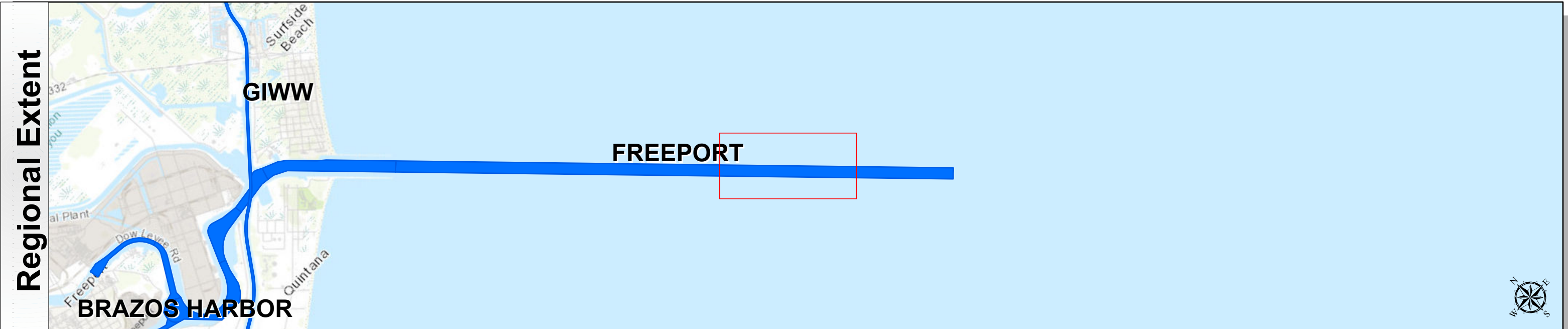
**FREEPORT**

Outer Bar Channel

# Freeport Ship Channel: Outer Bar Channel



U.S. Army Corps of Engineers  
Galveston District



Channel Features

Channel Center Line

Channel Toe

Channel Dimensions

Green Side Aids

Red Side Aids

Lights

MLLW

30

40

42

44

46

48

50

52

>

NOTES:  
1. Horizontal coordinates are referenced to Texas state plane coordinate system, south central zone nad83 us survey feet.  
2. Elevations are referenced to mean lower low tide (MLLW) datum.  
3. This project was designed by the Galveston District of the U.S. Army Corps of Engineers. The initials and signatures and registration designations of individuals appear on these project documents within the scope of their employment as required by 47 CFR 111.11-111.12.  
4. The information depicted on this survey map represents the results of surveys made on the dates indicated and can only be considered as indicating the general conditions existing at that time. These conditions are subject to rapid change due to shoaling events. A prudent mariner should not rely exclusively on the information provided here. Required by 33 CFR 209.325.  
5. For the most up to date information please check our website at: <http://www.svg.usace.army.mil/Missions/Navigation/HydrographicSurveys/>  
Service Layer Credits: World Topographic Map: Brazoria County, Texas Parks & Wildlife, Esri, HERE, Garmin, INCREMENT P, USGS, METI/NASA, NGA, EPA, NOAA, World Imagery: Maxar, World Ocean Base: Esri, GEBCO, Garmin, NaturalVue

Additional Combined Survey Dates and Stationing:

COMB\_SURV\_INFO\_HERE

Coordinate System: NAD 1983 StatePlane Texas South Central FIPS 4204 Feet  
Projection: Lambert Conformal Conic

Dredging Reach Extent

0

0.28

0.55

1.1

Miles

Hydrographic Survey Extent

0

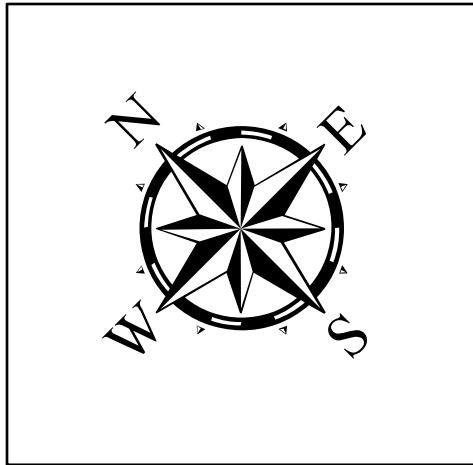
235

470

940

Feet

Latest Survey Collection Date: 01 February 2024		Authorized Depth: -48ft.	
Document Page: 2 of 5	Website Index Number: 2	Side Slope Ratio: (Rise : Run)	
Scale: 1:2,750		PDF Print Date: 2/26/2024	
Mapped by: M3AOXPAC			
Additional Imagery info:			



HYDROGRAPHIC SURVEY

U.S. ARMY ENGINEER DISTRICT

CORPS OF ENGINEERS

GALVESTON, TEXAS

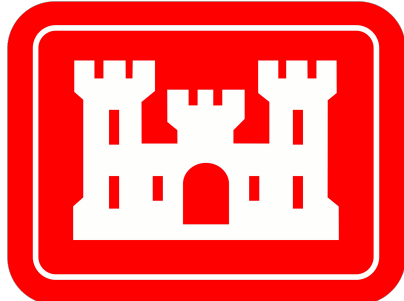
Station: -260+00 to 0+00

FREEPORT

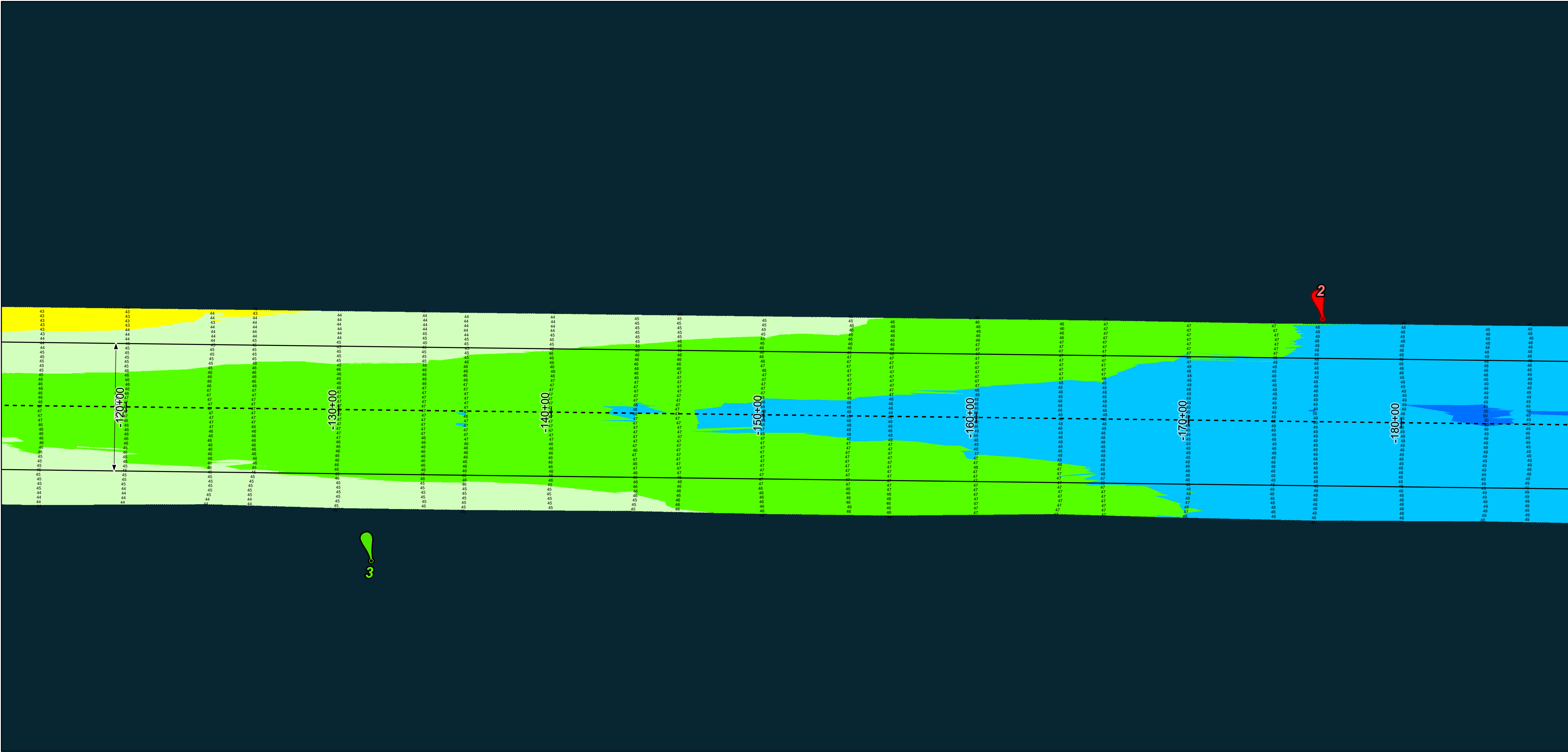
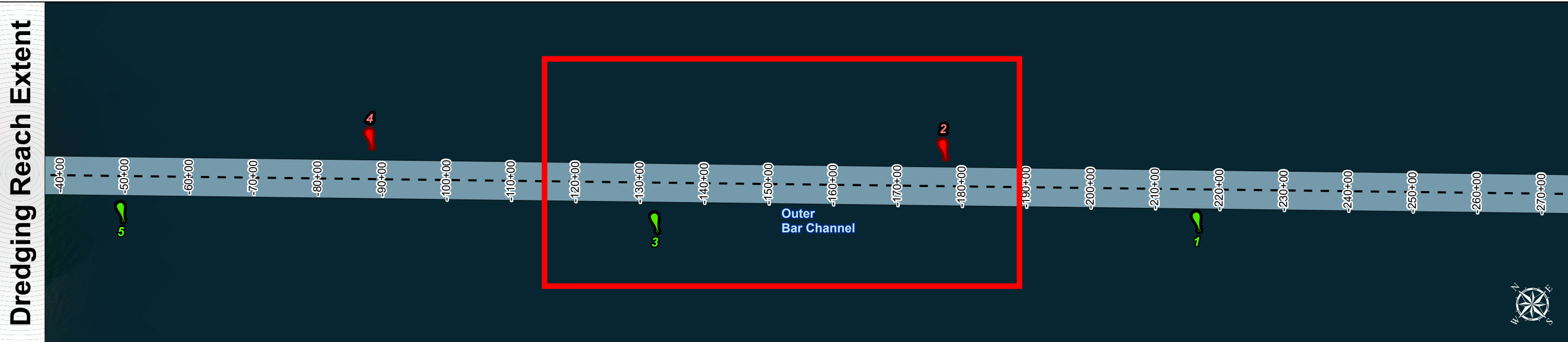
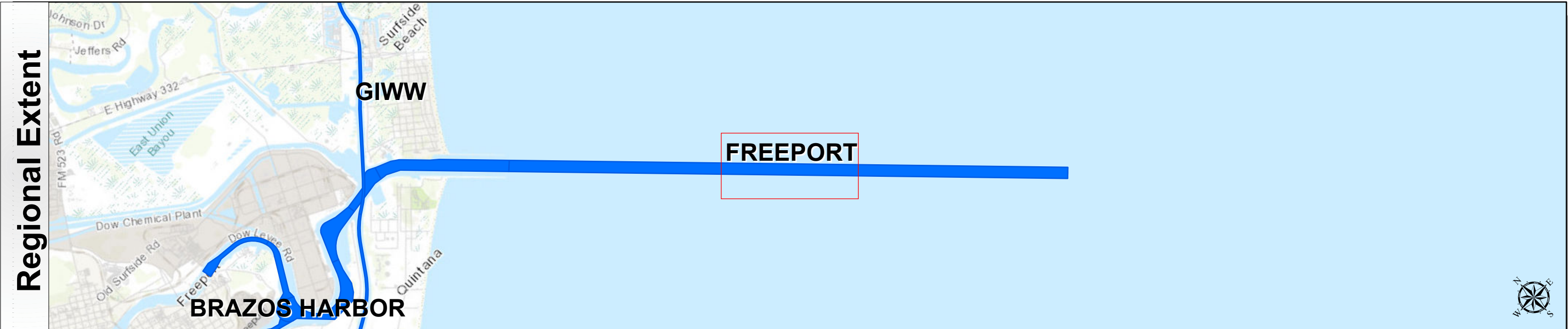
Outer Bar Channel



# Freeport Ship Channel: Outer Bar Channel



U.S. Army Corps of Engineers  
Galveston District



**Channel Features**

- Channel Center Line
- Channel Toe
- Channel Dimensions

**Aids to Navigation**

- Green Side Aids
- Red Side Aids
- Lights

**MLLW**

30 40 42 44 46 48 50 52 ^

**NOTES:**

- Horizontal coordinates are referenced to Texas state plane coordinate system, south central zone nad83 us survey feet.
- Elevations are referenced to mean lower low tide (MLLW) datum.
- This project was designed by the Galveston District of the U.S. Army Corps of Engineers. The initials and signatures and registration designations of individuals appear on these project documents within the scope of their employment as required by 47 CFR 111.01-111.02.
- The information depicted on this survey map represents the results of surveys made on the dates indicated and can only be considered as indicating the general conditions existing at that time. These conditions are subject to rapid change due to shoaling events. A prudent mariner should not rely exclusively on the information provided here. Required by 33 CFR 209.325
- For the most up to date information please check our website at: <http://www.svg.usace.army.mil/Missions/Navigation/HydrographicSurveys/>

Service Layer Credits: World Topographic Map: Brazoria County, Texas Parks & Wildlife, Esri, HERE, Garmin, INCREMENT P, USGS, METI/NASA, NGA, EPA, NOAA, World Imagery: Maxar, World Ocean Base: Esri, GEBCO, Garmin, NaturalVue

**Additional Combined Survey Dates and Stationing:**

COMB\_SURV\_INFO\_HERE

**Coordinate System:** NAD 1983 StatePlane Texas South Central FIPS 4204 Feet  
Projection: Lambert Conformal Conic

**Dredging Reach Extent**

0 0.28 0.55 1.1 Miles

**Hydrographic Survey Extent**

0 235 470 940 Feet

**HYDROGRAPHIC SURVEY**

U.S. ARMY ENGINEER DISTRICT  
CORPS OF ENGINEERS  
GALVESTON, TEXAS

**Station: -260+00 to 0+00**

**FREEPORT**

Outer Bar Channel

**Latest Survey Collection Date:** 01 February 2024

**Document Page:** 3 of 5

**Scale:** 1:2,750

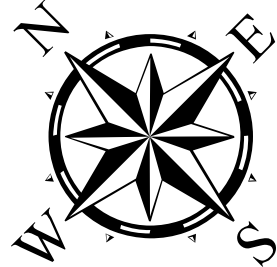
**Mapped by:** M3AOXPAC

**Additional Imagery info:**

**Authorized Depth:** -48ft.

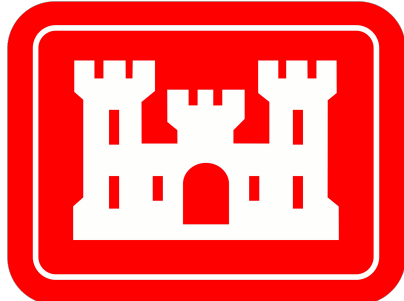
**Side Slope Ratio:** (Rise : Run)

**PDF Print Date:** 2/26/2024

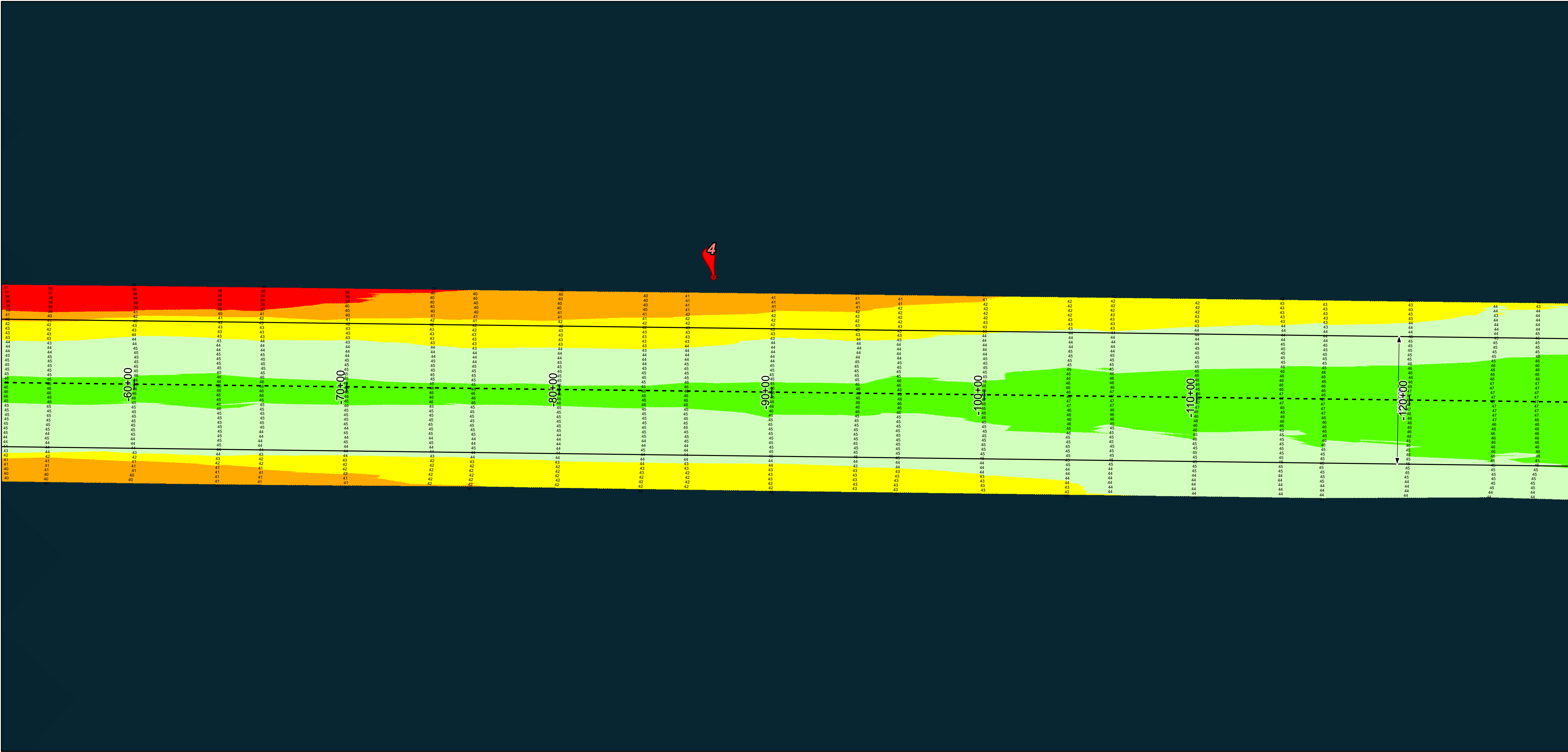
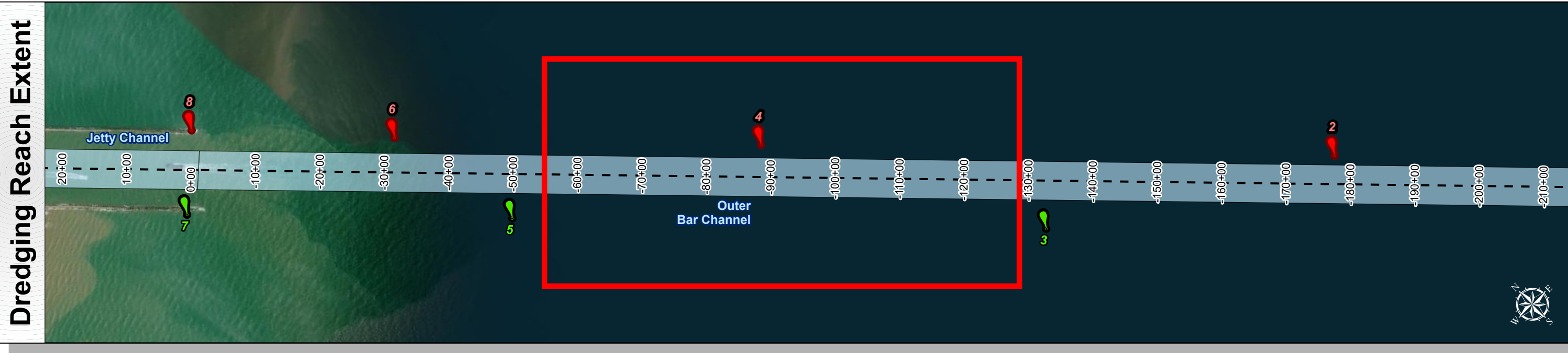
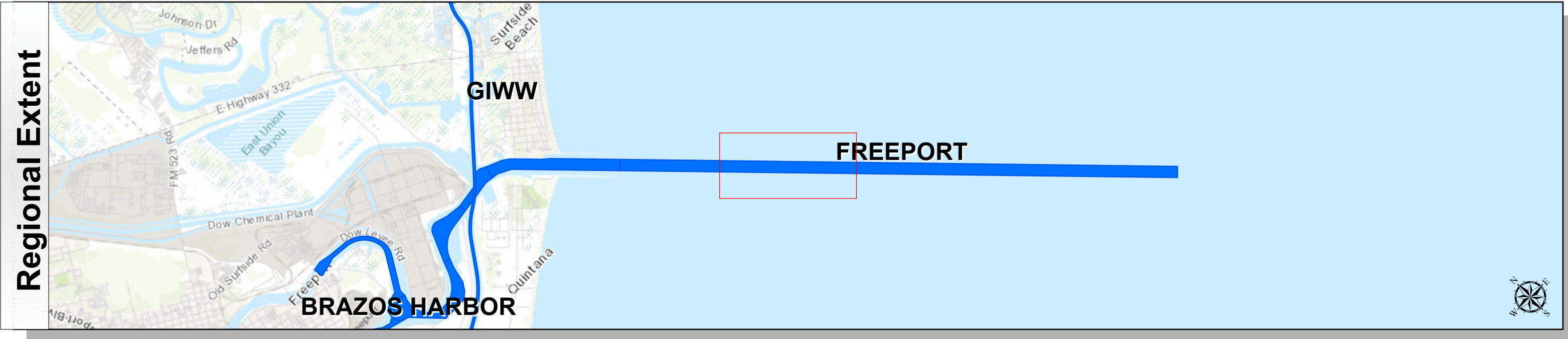




# Freeport Ship Channel: Outer Bar Channel



U.S. Army Corps of Engineers  
Galveston District



**Channel Features**

- Channel Center Line
- Channel Toe
- Channel Dimensions

**Aids to Navigation**

- Green Side Aids
- Red Side Aids
- Lights

**MLLW**

30	40	42	44	46	48	50	52	52
----	----	----	----	----	----	----	----	----

NOTES:  
1. Horizontal coordinates are referenced to Texas state plane coordinate system, south central zone nad83 us survey feet.  
2. Elevations are referenced to mean lower low tide (MLLW) datum.  
3. This project was designed by the galveston district of the u.s. army corps of engineers. The initials and signatures and registration designations of individuals appear on these project documents within the scope of their employment as required by er11105-61152.  
4. The information depicted on this survey map represents the results of surveys made on the dates indicated and can only be considered as indicating the general conditions existing at that time. These conditions are subject to rapid change due to shoaling events. A prudent mariner should not rely exclusively on the information provided here. Required by 33 or 209.325  
5. For the most up to date information please check our website at: <http://www.svg.usace.army.mil/Missions/Navigation/HydrographicSurveys/>  
Service Layer Credits: World Topographic Map: Brazoria County, Texas Parks & Wildlife, Esri, HERE, Garmin, INCREMENT P, USGS, METI/NASA, NGA, EPA, USDA  
World Imagery: Maxar  
World Ocean Base: Esri, GEBCO, Garmin, NaturalVue

Additional Combined Survey Dates and Stationing:  
COMB\_SURV\_INFO\_HERE

**Coordinate System:** NAD 1983 StatePlane Texas South Central FIPS 4204 Feet  
**Projection:** Lambert Conformal Conic

**Dredging Reach Extent**

0	0.28	0.55	1.1
---	------	------	-----

Miles

**Hydrographic Survey Extent**

0	235	470	940
---	-----	-----	-----

Feet

**Channel Features**

- Channel Center Line
- Channel Toe
- Channel Dimensions

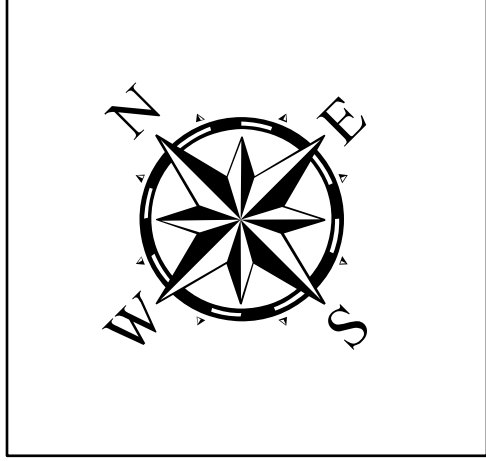
**Aids to Navigation**

- Green Side Aids
- Red Side Aids
- Lights

**MLLW**

30	40	42	44	46	48	50	52	52
----	----	----	----	----	----	----	----	----

Latest Survey Collection Date: 01 February 2024	Authorized Depth: -48ft.
Document Page: 4 of 5	Side Slope Ratio: (Rise : Run)
Scale: 1:2,750	PDF Print Date: 2/26/2024
Mapped by: M3AOXPAC	
Additional Imagery info:	

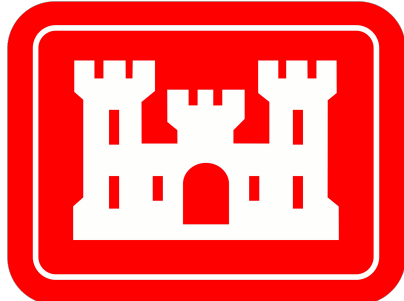


**HYDROGRAPHIC SURVEY**  
U.S. ARMY ENGINEER DISTRICT  
CORPS OF ENGINEERS  
GALVESTON, TEXAS

Station: -260+00 to 0+00  
**FREEPORT**  
Outer Bar Channel



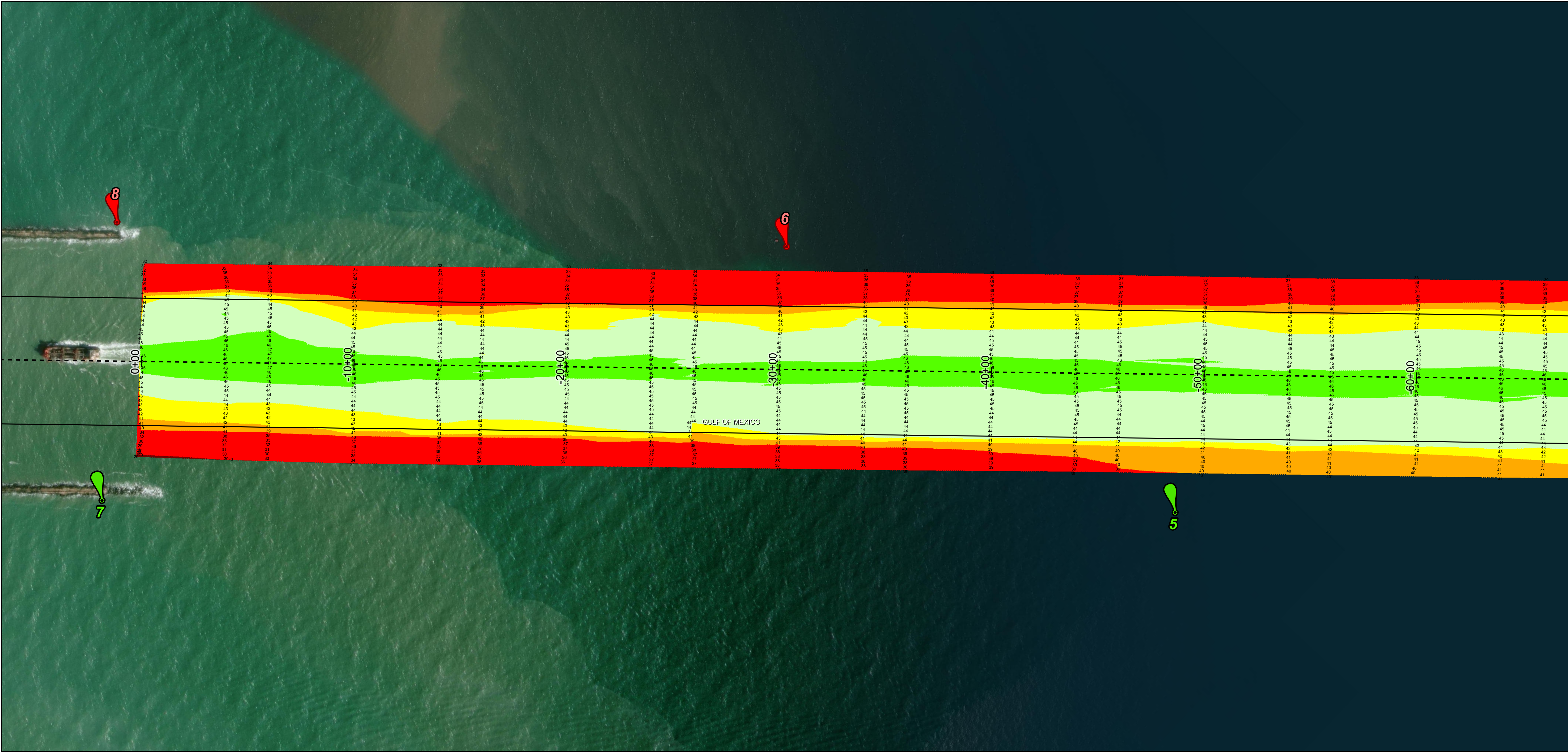
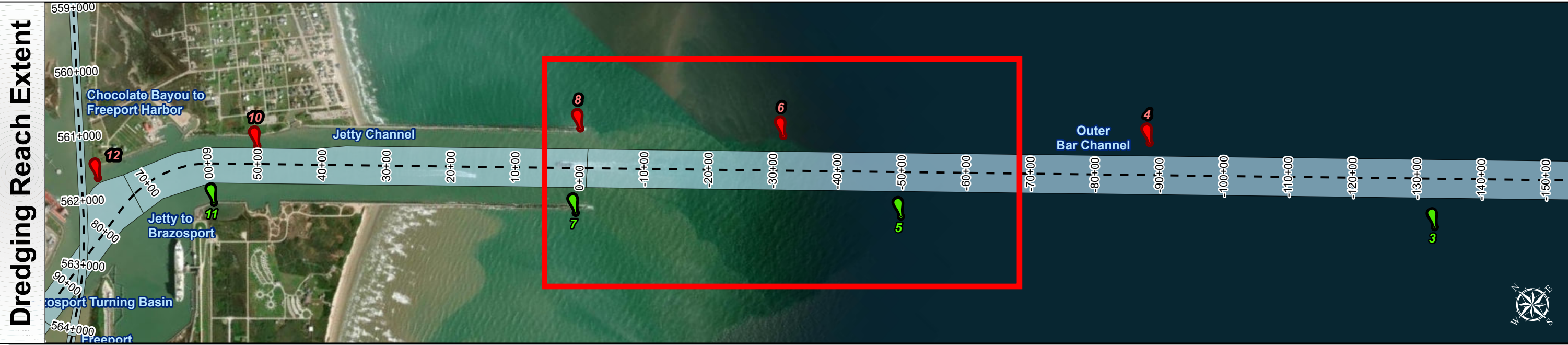
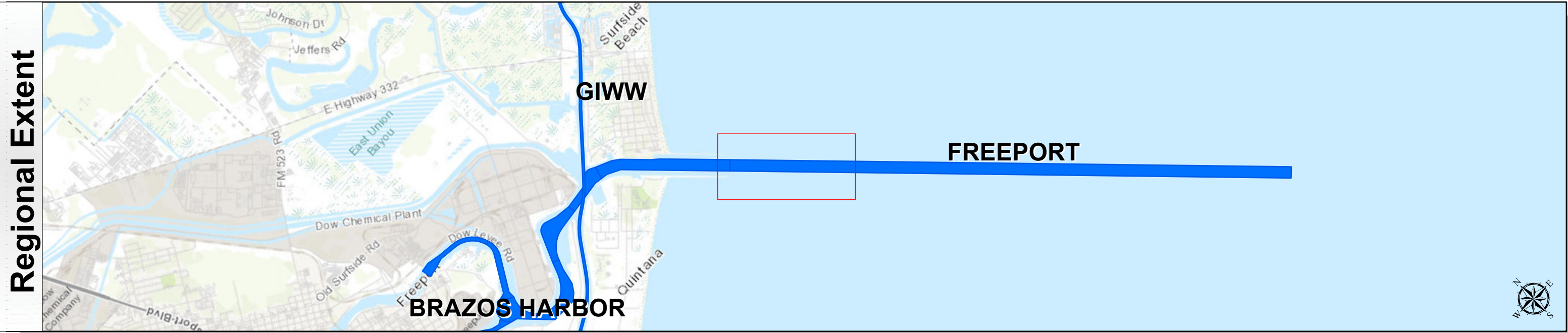
# Freeport Ship Channel: Outer Bar Channel



U.S. Army Corps of Engineers  
Galveston District



Regional Extent



## Channel Features

- Channel Center Line
- Channel Toe
- Channel Dimensions

## Aids to Navigation

- Green Side Aids
- Red Side Aids
- Lights

## MLLW

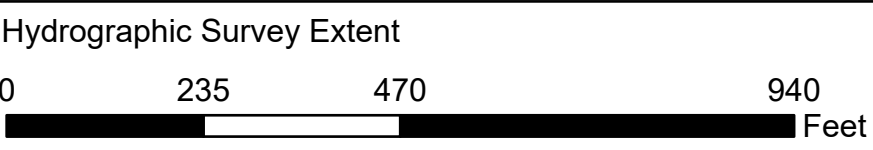
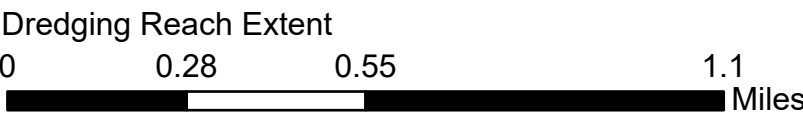


## NOTES:

- Horizontal coordinates are referenced to Texas state plane coordinate system, south central zone nad83 us survey feet.
  - Elevations are referenced to mean lower low tide (MLLW) datum.
  - This project was designed by the Galveston District of the U.S. Army Corps of Engineers. The initials and signatures and registration designations of individuals appear on these project documents within the scope of their employment as required by 47 CFR 111.11-111.12.
  - The information depicted on this survey map represents the results of surveys made on the dates indicated and can only be considered as indicating the general conditions existing at that time. These conditions are subject to rapid change due to shoaling events. A prudent mariner should not rely exclusively on the information provided here. Required by 33 CFR 209.325.
  - For the most up to date information please check our website at: <http://www.svg.usace.army.mil/Missions/Navigation/HydrographicSurveys/>
- Service Layer Credits: World Topographic Map: Brazoria County, Texas Parks & Wildlife, Esri, HERE, Garmin, INCREMENT P, USGS, METI/NASA, NOAA, EPA, USDA  
World Imagery: Maxar  
World Ocean Base: Esri, GEBCO, Garmin, NaturalVue

Additional Combined Survey Dates and Stationing:  
COMB\_SURV\_INFO\_HERE

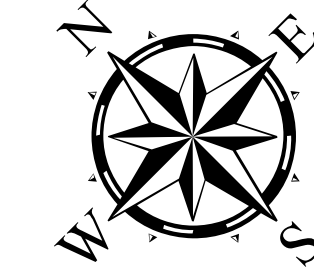
Coordinate System: NAD 1983 StatePlane Texas South Central FIPS 4204 Feet  
Projection: Lambert Conformal Conic



## HYDROGRAPHIC SURVEY

U.S. ARMY ENGINEER DISTRICT  
CORPS OF ENGINEERS  
GALVESTON, TEXAS

Station: -260+00 to 0+00  
FREEPORT  
Outer Bar Channel



Latest Survey Collection Date: 01 February 2024

Document Page: 5 of 5

Website Index Number: 5

Authorized Depth: -48ft.

Side Slope Ratio: (Rise : Run)

PDF Print Date: 2/26/2024

Mapped by: M3AOXPAC

Additional Imagery info: