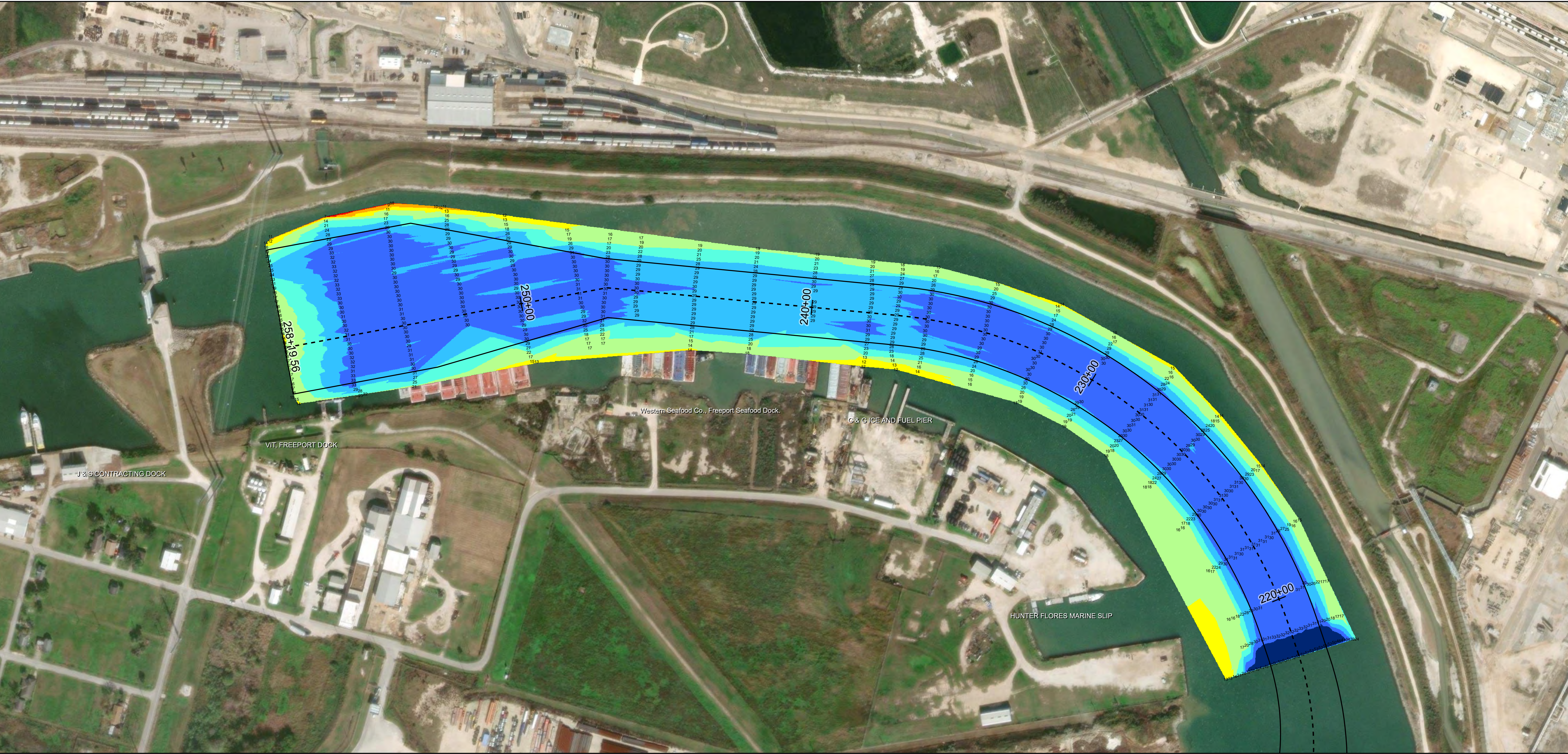


Freeport Harbor: Stauffer Channel-Upper Reach



U.S. Army Corps of Engineers
Galveston District



Channel Features

- Channel Center Line
- Channel Toe
- Channel Dimensions

Aids to Navigation

- Green Side Aids
- Red Side Aids
- Lights

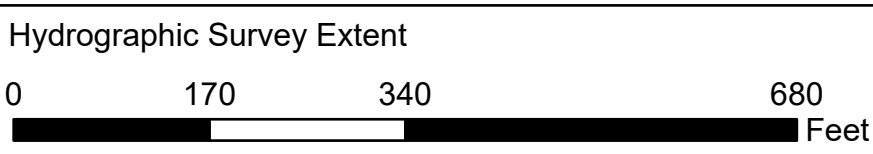
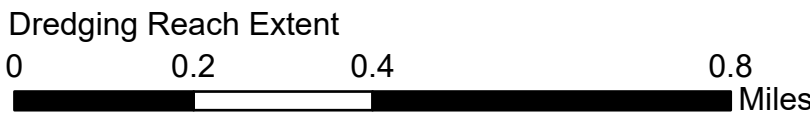
MLLW



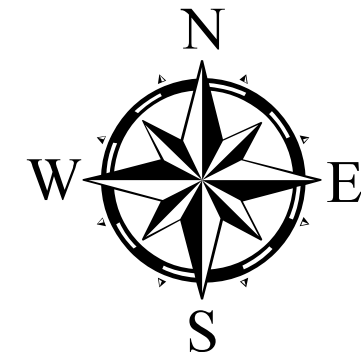
NOTES:
1. Horizontal coordinates are referenced to Texas state plane coordinate system, south central zone nad83 us survey feet.
2. Elevations are referenced to mean lower low tide (MLLW) datum.
3. This project was designed by the Galveston District of the U.S. Army Corps of Engineers. The initials and signatures and registration designations of individuals appear on these project documents within the scope of their employment as required by 47CFR 111.15-111.152.
4. The information depicted on this survey map represents the results of surveys made on the dates indicated and can only be considered as indicating the general conditions existing at that time. These conditions are subject to rapid change due to shoaling events. A prudent mariner should not rely exclusively on the information provided here. Required by 33 CFR 209.325.
5. For the most up to date information please check our website at: <http://www.svg.usace.army.mil/Missions/Navigation/HydrographicSurveys/>
Service Layer Credits: World Imagery: Maxar, Microsoft
World Topographic Map: Brazoria County, Texas Parks & Wildlife, Esri, HERE, Garmin, INCREMENT P, USGS, METINASA, NGA, EPA, USDA
World Imagery: Maxar
World Ocean Base: Esri, GEBCO, Garmin, NaturalVue

Additional Combined Survey Dates and Stationing:
COMB_SURV_INFO_HERE

Coordinate System: NAD 1983 StatePlane Texas South Central FIPS 4204 Feet
Projection: Lambert Conformal Conic



Latest Survey Collection Date: 11 January 2024		Authorized Depth: -25ft.
Document Page: 1 of 1	Website Index Number: 11	Side Slope Ratio: (Rise : Run)
Scale: 1:2,000		PDF Print Date: 2/14/2024
Mapped by: M3AOXPAC		
Additional Imagery info:		



HYDROGRAPHIC SURVEY

U.S. ARMY ENGINEER DISTRICT
CORPS OF ENGINEERS
GALVESTON, TEXAS

Station: 185+46.41 to 217+99.93

Freeport

Stauffer Channel-Upper Reach