

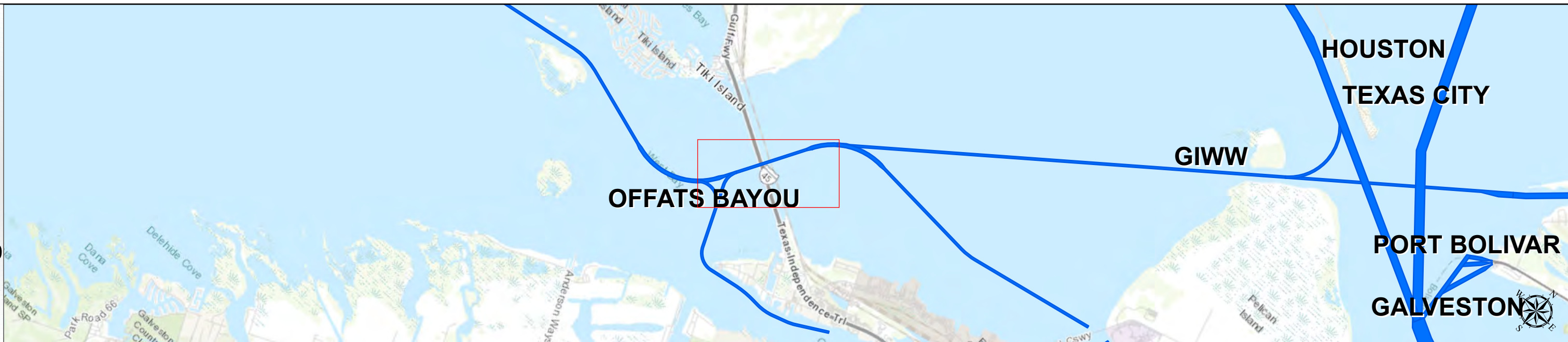
Gulf Intracoastal Waterway: Galveston Causeway to Chocolate Bayou



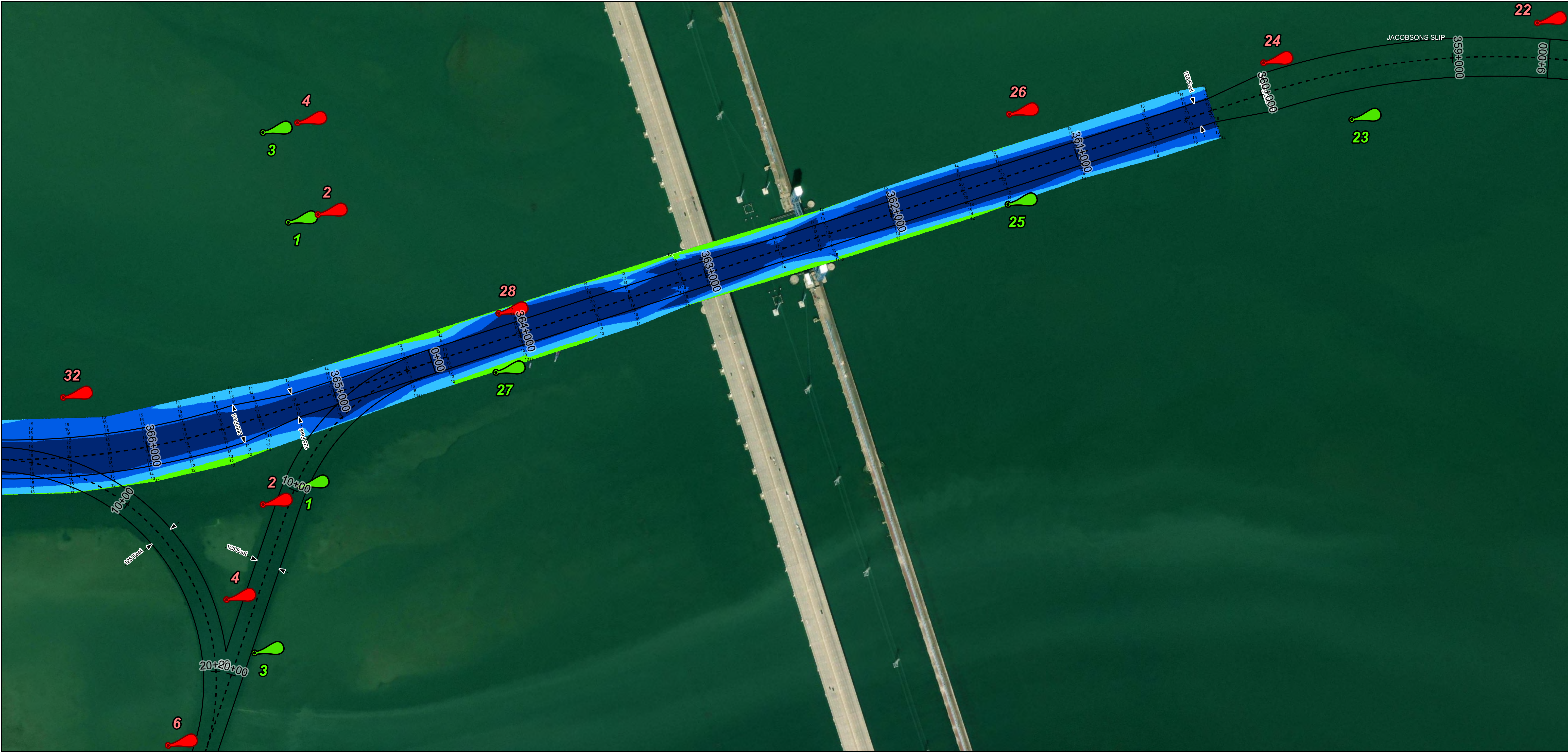
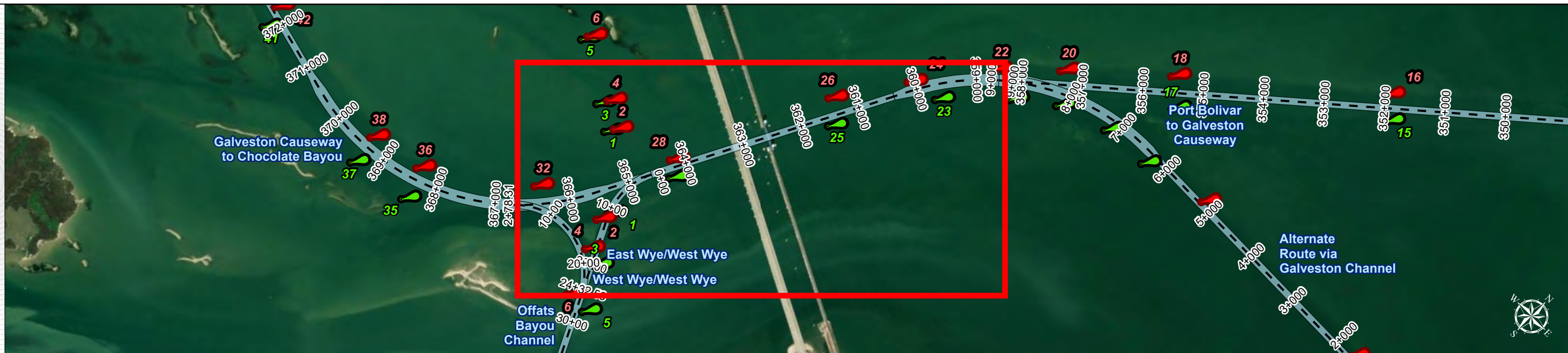
U.S. Army Corps of Engineers
Galveston District



Regional Extent



Dredging Reach Extent



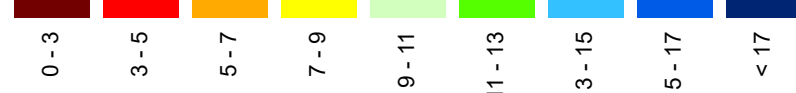
Channel Features

- Channel Center Line
- Channel Toe
- Channel Dimensions

Aids to Navigation

- Green Side Aids
- Red Side Aids
- Lights

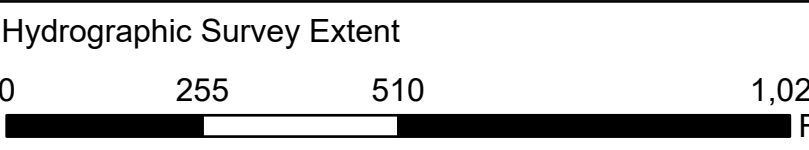
MLLW



NOTES:
1. Horizontal coordinates are referenced to Texas state plane coordinate system, south central zone nad83 us survey feet.
2. Elevations are referenced to mean lower low tide (MLLW) datum.
3. This project was designed by the Galveston District of the U.S. Army Corps of Engineers. The initials and signatures and registration designations of individuals appear on these project documents within the scope of their employment as required by 47 CFR 111.101-111.102.
4. The information depicted on this survey map represents the results of surveys made on the dates indicated and can only be considered as indicating the general conditions existing at that time. These conditions are subject to rapid change due to shoaling events. A prudent mariner should not rely exclusively on the information provided here. Required by 33 CFR 209.325.
5. For the most up to date information please check our website at: <http://www.usace.army.mil/Missions/Navigation/HydrographicSurveys/>
Service Layer Credits: World Topographic Map: Texas Parks & Wildlife, Esri, HERE, Garmin, INCREMENT P, USGS, METI/NASA, NGA, EPA, USDA, World Imagery: Maxar

Additional Combined Survey Dates and Stationing:
Combined survey dates 20230506_PR_390P000_437P000; 20230520_PR_437P000_465P000;
20231229_PR_360P271_390P000.20240103_PR_390P000_420P000

Coordinate System: NAD 1983 StatePlane Texas South Central FIPS 4204 Feet
Projection: Lambert Conformal Conic



HYDROGRAPHIC SURVEY

U.S. ARMY ENGINEER DISTRICT
CORPS OF ENGINEERS
GALVESTON, TEXAS

Station: 360+270.67 to 465+000
GIWW
Galveston Causeway to Chocolate Bayou

Latest Survey Collection Date: 03 January 2024

Document Page: 1 of 15

Authorized Depth: -13ft.

Side Slope Ratio: (Rise : Run)

Website Index Number: 51

PDF Print Date: 2/5/2024

Scale: 1:3,000

Mapped by: M3AOXPAC

Additional Imagery info:



Gulf Intracoastal Waterway: Galveston Causeway to Chocolate Bayou



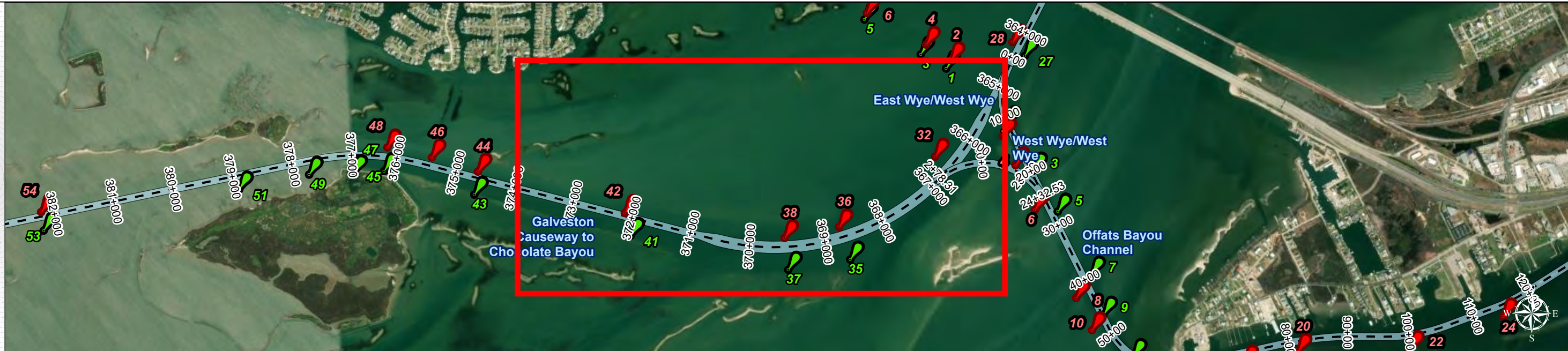
U.S. Army Corps of Engineers
Galveston District



Regional Extent



Dredging Reach Extent



Channel Features

- Channel Center Line
- Channel Toe
- Channel Dimensions

Aids to Navigation

- Green Side Aids
- Red Side Aids
- Lights

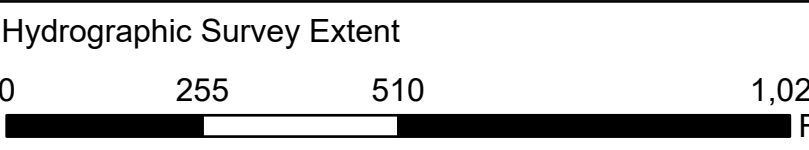
MLLW



NOTES:
1. Horizontal coordinates are referenced to Texas state plane coordinate system, south central zone nad83 us survey feet.
2. Elevations are referenced to mean lower low tide (MLLW) datum.
3. This project was designed by the Galveston District of the U.S. Army Corps of Engineers. The initials and signatures and registration designations of individuals appear on these project documents within the scope of their employment as required by 47 CFR 111.05-61152.
4. The information depicted on this survey map represents the results of surveys made on the dates indicated and can only be considered as indicating the general conditions existing at that time. These conditions are subject to rapid change due to shoaling events. A prudent mariner should not rely exclusively on the information provided here. Required by 33 CFR 209.325.
5. For the most up to date information please check our website at: <http://www.svg.usace.army.mil/Missions/Navigation/HydrographicSurveys/>
Service Layer Credits: World Topographic Map: Texas Parks & Wildlife, Esri, HERE, Garmin, INCREMENT P, USGS, METI/NASA, NGA, EPA, USDA
World Imagery: Maxar

Additional Combined Survey Dates and Stationing:
Combined survey dates 20230506_PR_390P000_437P000; 20230520_PR_437P000_465P000;
20231229_PR_360P271_390P000.20240103_PR_390P000_420P000

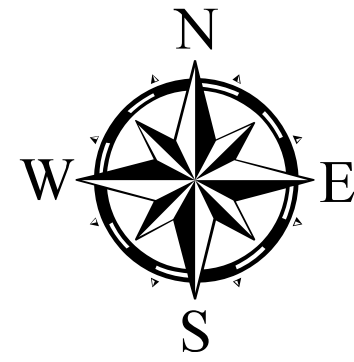
Coordinate System: NAD 1983 StatePlane Texas South Central FIPS 4204 Feet
Projection: Lambert Conformal Conic



HYDROGRAPHIC SURVEY

U.S. ARMY ENGINEER DISTRICT
CORPS OF ENGINEERS
GALVESTON, TEXAS

Station: 360+270.67 to 465+000
GIWW
Galveston Causeway to Chocolate Bayou



Latest Survey Collection Date: 03 January 2024
Document Page: 2 of 15
Scale: 1:3,000
Mapped by: M3AOXPAC
Additional Imagery info:

Authorized Depth: -13ft.

Side Slope Ratio: (Rise : Run)

PDF Print Date: 2/5/2024

Website Index Number: 52

Gulf Intracoastal Waterway: Galveston Causeway to Chocolate Bayou



U.S. Army Corps of Engineers
Galveston District



Regional Extent



Dredging Reach Extent



Channel Features

- Channel Center Line
- Channel Toe
- Channel Dimensions

Aids to Navigation

- Green Side Aids
- Red Side Aids
- Lights

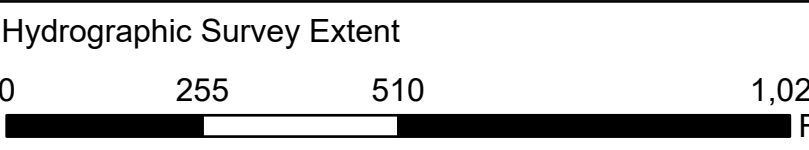
MLLW



NOTES:
1. Horizontal coordinates are referenced to Texas state plane coordinate system, south central zone nad83 us survey feet.
2. Elevations are referenced to mean lower low tide (MLLW) datum.
3. This project was designed by the galveston district of the u.s. army corps of engineers. The initials and signatures and registration designations of individuals appear on these project documents within the scope of their employment as required by er11101-d1152.
4. The information depicted on this survey map represents the results of surveys made on the dates indicated and can only be considered as indicating the general conditions existing at that time. These conditions are subject to rapid change due to shoaling events. A prudent mariner should not rely exclusively on the information provided here. Required by 33 CFR 209.325
5. For the most up to date information please check our website at: <http://www.swg.usace.army.mil/Missions/Navigation/HydrographicSurveys/>
Service Layer Credits: World Topographic Map; Texas Parks & Wildlife; Esri; HERE; Garmin; INCREMENT P; USGS; METINASA; NGA; EPA; USDA
World Imagery: Maxar

Additional Combined Survey Dates and Stationing:
Combined survey dates 20230506_PR_390P000_437P000; 20230520_PR_437P000_465P000;
20231229_PR_360P271_390P000.20240103_PR_390P000_420P000

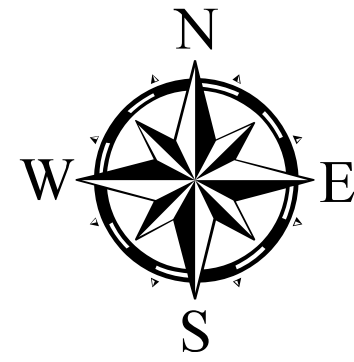
Coordinate System: NAD 1983 StatePlane Texas South Central FIPS 4204 Feet
Projection: Lambert Conformal Conic



HYDROGRAPHIC SURVEY

U.S. ARMY ENGINEER DISTRICT
CORPS OF ENGINEERS
GALVESTON, TEXAS

Station: 360+270.67 to 465+000
GIWW
Galveston Causeway to Chocolate Bayou



Latest Survey Collection Date: 03 January 2024

Document Page: 3 of 15

Website Index Number: 53

Authorized Depth: -13ft.

Side Slope Ratio: (Rise : Run)

PDF Print Date: 2/5/2024

Scale: 1:3,000

Mapped by: M3AOXPAC

Additional Imagery info:

Gulf Intracoastal Waterway: Galveston Causeway to Chocolate Bayou



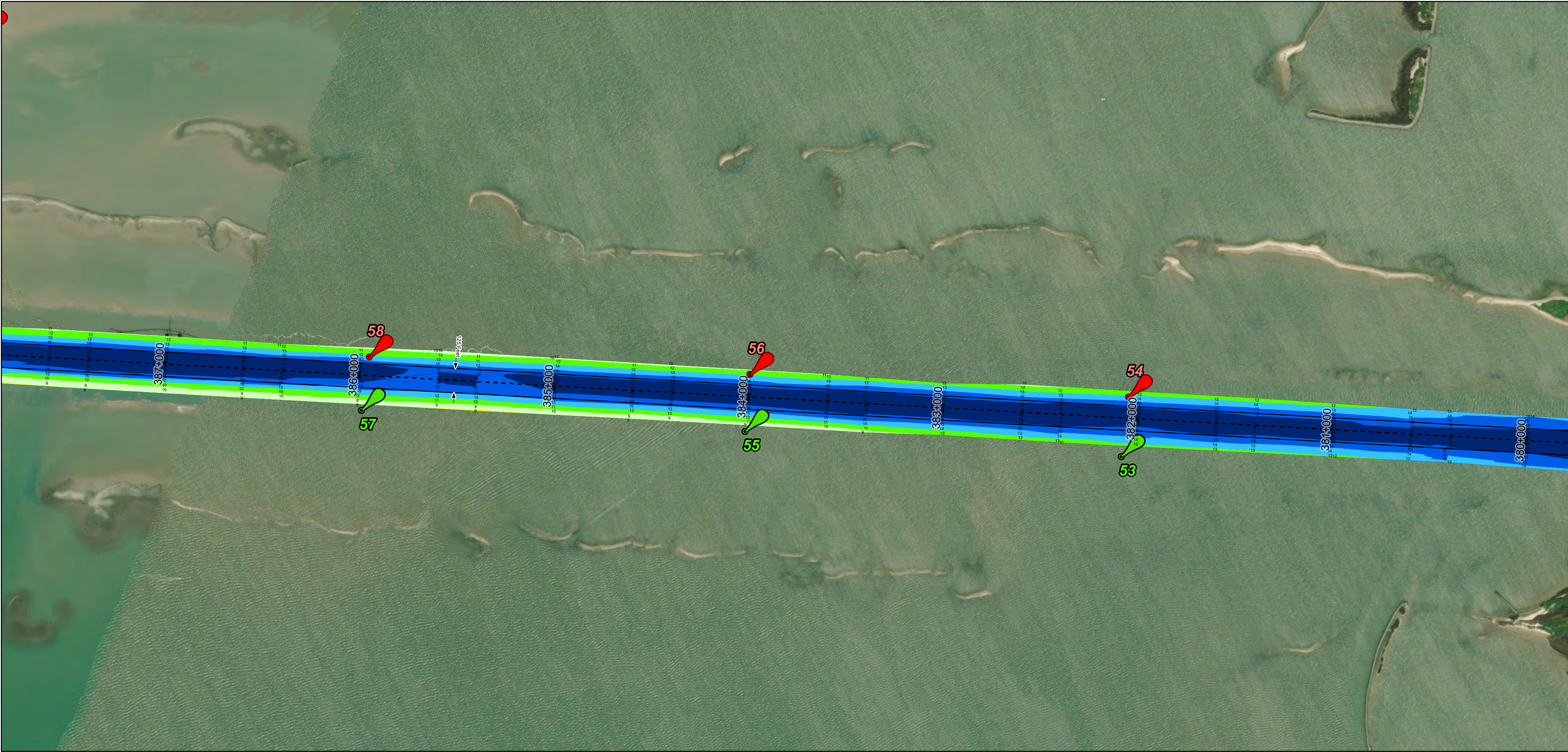
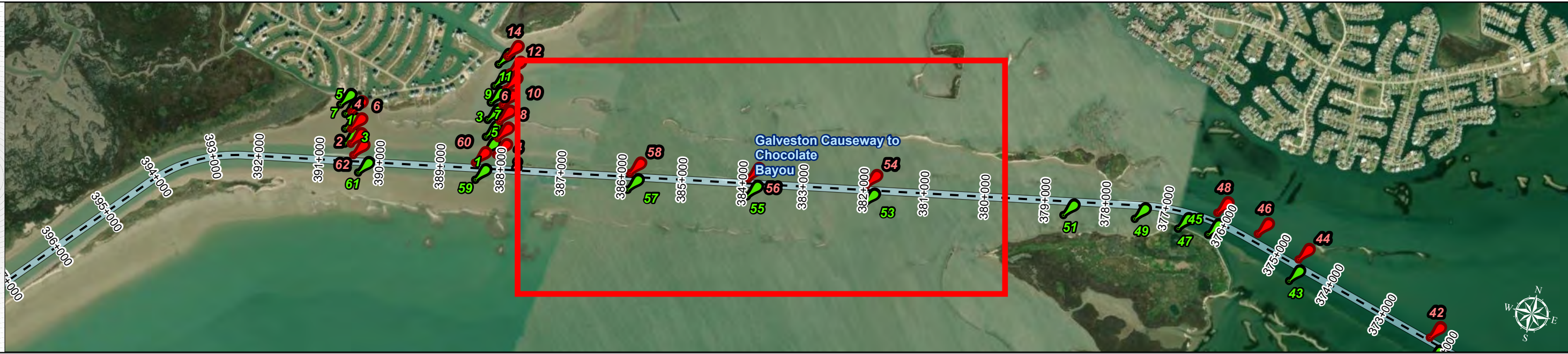
U.S. Army Corps of Engineers
Galveston District



Regional Extent



Dredging Reach Extent



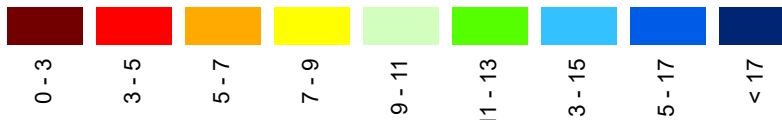
Channel Features

- Channel Center Line
- Channel Toe
- Channel Dimensions

Aids to Navigation

- Green Side Aids
- Red Side Aids
- Lights

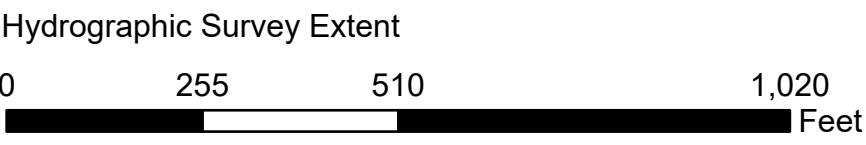
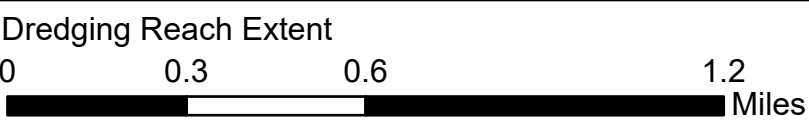
MLLW



NOTES:
1. Horizontal coordinates are referenced to Texas state plane coordinate system, south central zone nad83 us survey feet.
2. Elevations are referenced to mean lower low tide (MLLW) datum.
3. This project was designed by the Galveston District of the U.S. Army Corps of Engineers. The initials and signatures and registration designations of individuals appear on these project documents within the scope of their employment as required by 47 CFR 111.11-111.12.
4. The information depicted on this survey map represents the results of surveys made on the dates indicated and can only be considered as indicating the general conditions existing at that time. These conditions are subject to rapid change due to shoaling events. A prudent mariner should not rely exclusively on the information provided here. Required by 33 CFR 209.325.
5. For the most up to date information please check our website at: <http://www.svg.usace.army.mil/Missions/Navigation/HydrographicSurveys/>
Service Layer Credits: World Topographic Map: Texas Parks & Wildlife, Esri, HERE, Garmin, INCREMENT P, USGS, METINASA, NGA, EPA, USDA
World Imagery: Maxar

Additional Combined Survey Dates and Stationing:
Combined survey dates 20230506_PR_390P000_437P000; 20230520_PR_437P000_465P000;
20231229_PR_360P271_390P000.20240103_PR_390P000_420P000

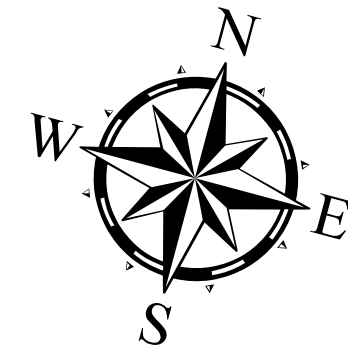
Coordinate System: NAD 1983 StatePlane Texas South Central FIPS 4204 Feet
Projection: Lambert Conformal Conic



HYDROGRAPHIC SURVEY

U.S. ARMY ENGINEER DISTRICT
CORPS OF ENGINEERS
GALVESTON, TEXAS

Station: 360+270.67 to 465+000
GIWW
Galveston Causeway to Chocolate Bayou



Latest Survey Collection Date: 03 January 2024

Document Page: 4 of 15

Website Index Number: 54

Scale: 1:3,000

Mapped by: M3AOXPAC

Additional Imagery info:

Authorized Depth: -13ft.

Side Slope Ratio: (Rise : Run)

PDF Print Date: 2/5/2024

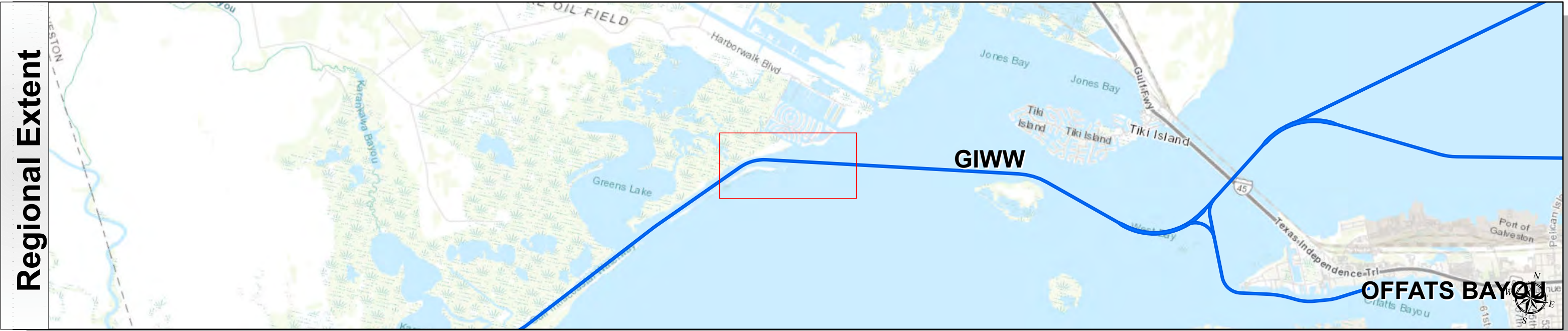
Gulf Intracoastal Waterway: Galveston Causeway to Chocolate Bayou



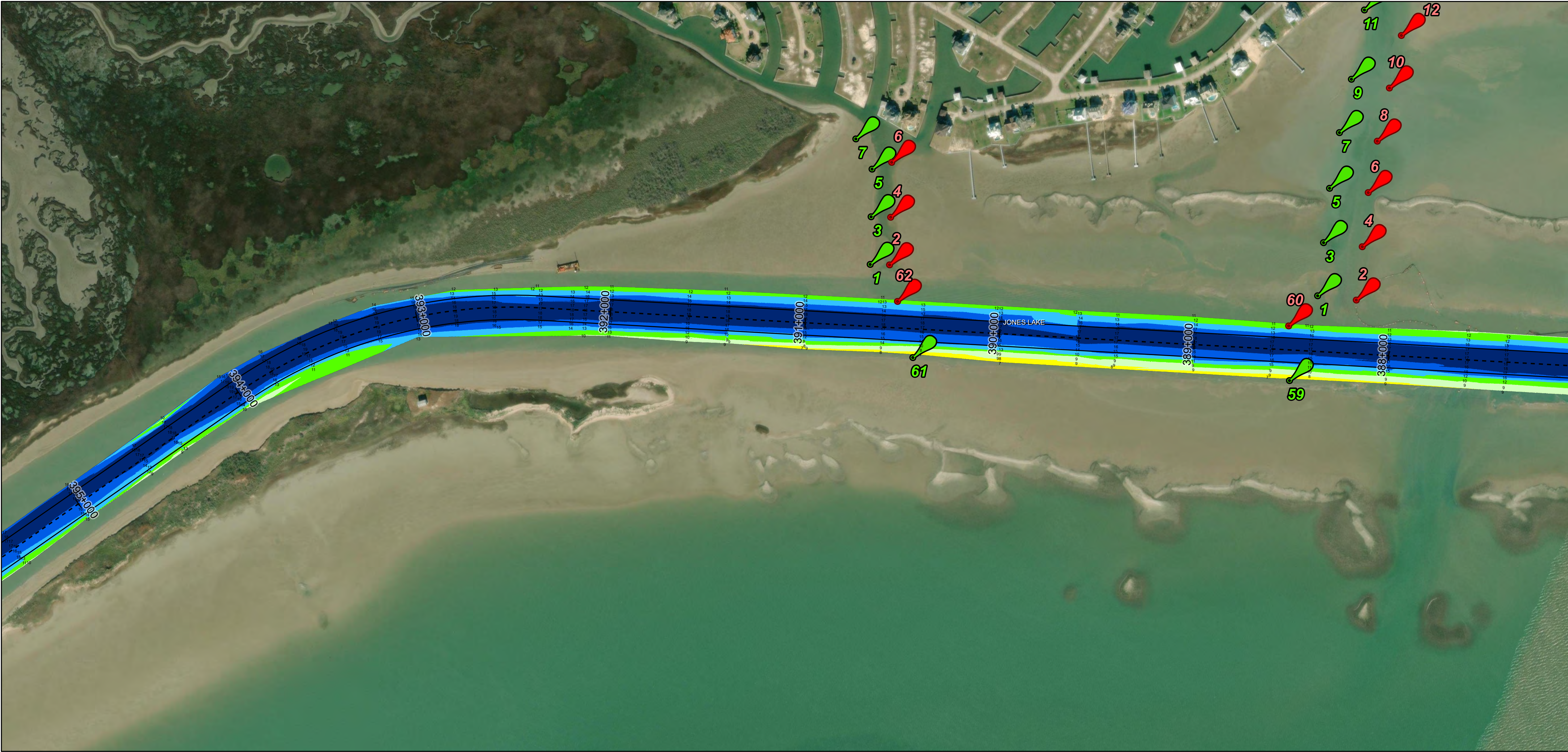
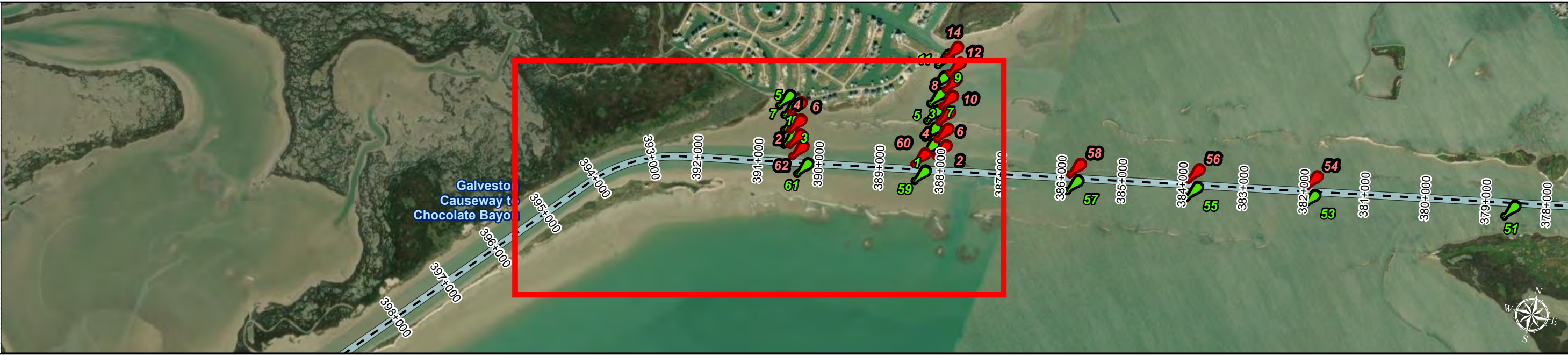
U.S. Army Corps of Engineers
Galveston District



Regional Extent



Dredging Reach Extent



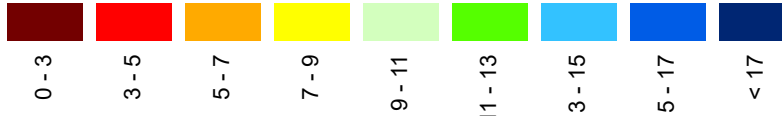
Channel Features

- Channel Center Line
- Channel Toe
- Channel Dimensions

Aids to Navigation

- Green Side Aids
- Red Side Aids
- Lights

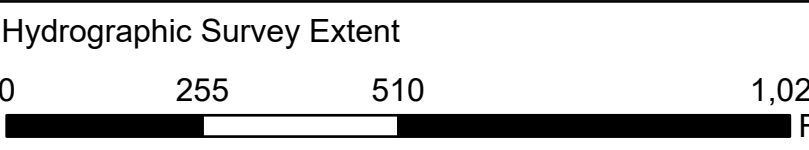
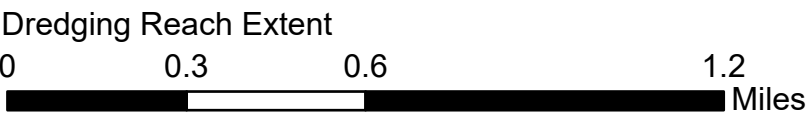
MLLW



NOTES:
1. Horizontal coordinates are referenced to Texas state plane coordinate system, south central zone nad83 us survey feet.
2. Elevations are referenced to mean lower low tide (MLLW) datum.
3. This project was designed by the Galveston District of the U.S. Army Corps of Engineers. The initials and signatures and registration designations of individuals appear on these project documents within the scope of their employment as required by 47 CFR 111.11-111.12.
4. The information depicted on this survey map represents the results of surveys made on the dates indicated and can only be considered as indicating the general conditions existing at that time. These conditions are subject to rapid change due to shoaling events. A prudent mariner should not rely exclusively on the information provided here. Required by 33 CFR 209.325.
5. For the most up to date information please check our website at: <http://www.swg.usace.army.mil/Missions/Navigation/HydrographicSurveys/>
Service Layer Credits: World Topographic Map: Texas Parks & Wildlife, Esri, HERE, Garmin, INCREMENT P, USGS, METI/NASA, NGA, EPA, USDA
World Imagery: Maxar

Additional Combined Survey Dates and Stationing:
Combined survey dates 20230506_PR_390P000_437P000; 20230520_PR_437P000_465P000;
20231229_PR_360P271_390P000.20240103_PR_390P000_420P000

Coordinate System: NAD 1983 StatePlane Texas South Central FIPS 4204 Feet
Projection: Lambert Conformal Conic



HYDROGRAPHIC SURVEY

U.S. ARMY ENGINEER DISTRICT
CORPS OF ENGINEERS
GALVESTON, TEXAS

Station: 360+270.67 to 465+000
GIWW
Galveston Causeway to Chocolate Bayou

Latest Survey Collection Date: 03 January 2024

Document Page: 5 of 15

Website Index Number: 55

Authorized Depth: -13ft.

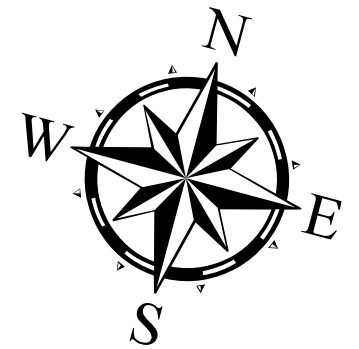
Side Slope Ratio: (Rise : Run)

PDF Print Date: 2/5/2024

Scale: 1:3,000

Mapped by: M3AOXPAC

Additional Imagery info:



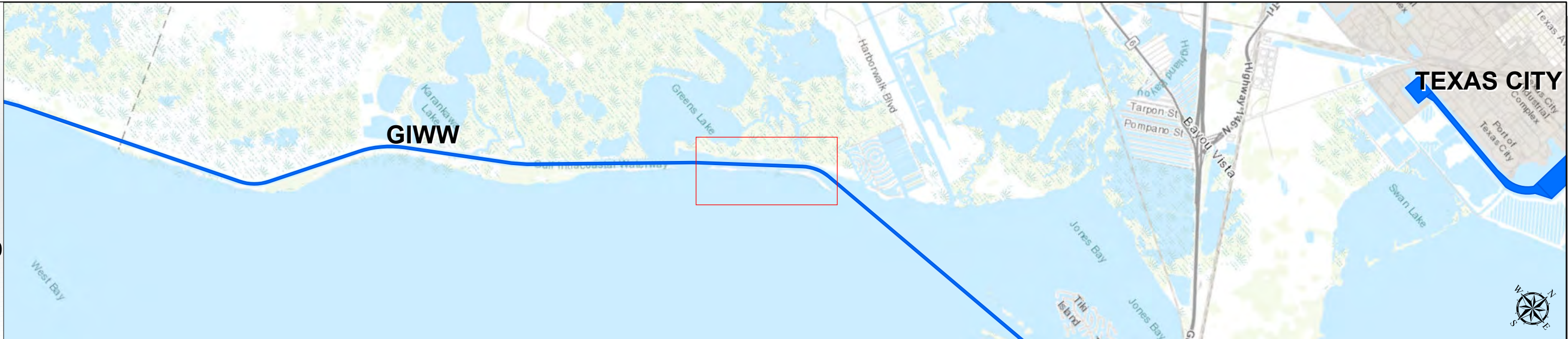
Gulf Intracoastal Waterway: Galveston Causeway to Chocolate Bayou



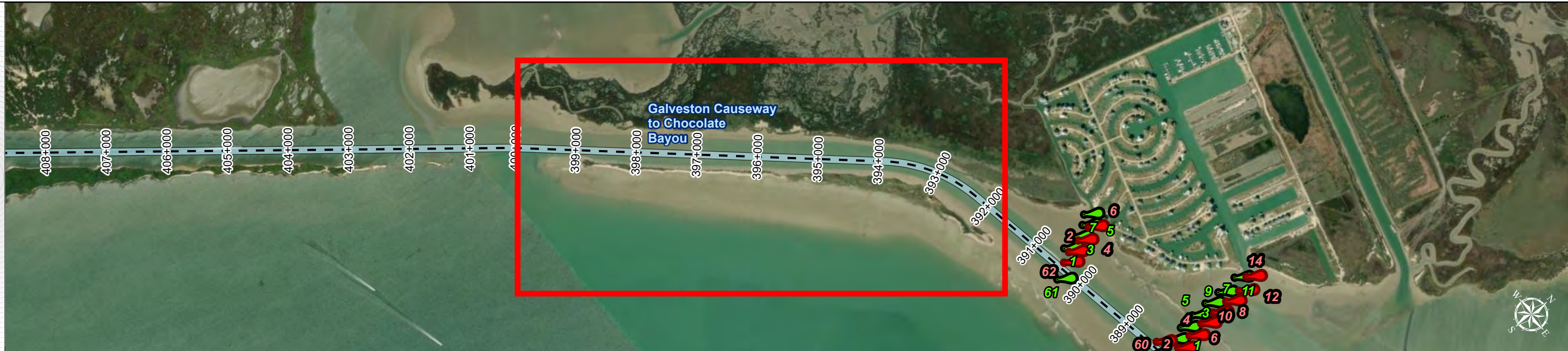
U.S. Army Corps of Engineers
Galveston District



Regional Extent



Dredging Reach Extent



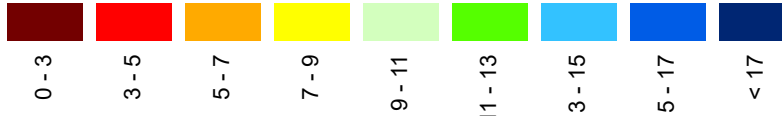
Channel Features

- Channel Center Line
- Channel Toe
- Channel Dimensions

Aids to Navigation

- Green Side Aids
- Red Side Aids
- Lights

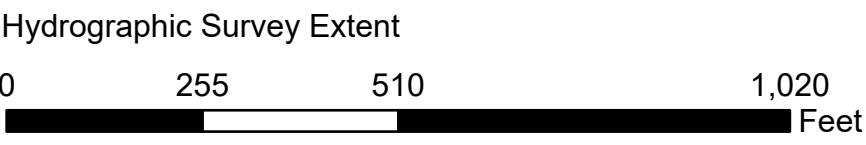
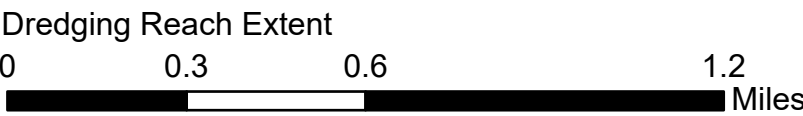
MLLW



NOTES:
1. Horizontal coordinates are referenced to Texas state plane coordinate system, south central zone nad83 us survey feet.
2. Elevations are referenced to mean lower low tide (MLLW) datum.
3. This project was designed by the Galveston District of the U.S. Army Corps of Engineers. The initials and signatures and registration designations of individuals appear on these project documents within the scope of their employment as required by 47 CFR 111.101-111.102.
4. The information depicted on this survey map represents the results of surveys made on the dates indicated and can only be considered as indicating the general conditions existing at that time. These conditions are subject to rapid change due to shoaling events. A prudent mariner should not rely exclusively on the information provided here. Required by 33 CFR 209.325.
5. For the most up to date information please check our website at: <http://www.svg.usace.army.mil/Missions/Navigation/HydrographicSurveys/>
Service Layer Credits: World Topographic Map: Texas Parks & Wildlife, Esri, HERE, Garmin, INCREMENT P, USGS, METINASA, NGA, EPA, USDA
World Imagery: Maxar

Additional Combined Survey Dates and Stationing:
Combined survey dates 20230506_PR_390P000_437P000; 20230520_PR_437P000_465P000;
20231229_PR_360P271_390P000.20240103_PR_390P000_420P000

Coordinate System: NAD 1983 StatePlane Texas South Central FIPS 4204 Feet
Projection: Lambert Conformal Conic



HYDROGRAPHIC SURVEY

U.S. ARMY ENGINEER DISTRICT
CORPS OF ENGINEERS
GALVESTON, TEXAS

Station: 360+270.67 to 465+000
GIWW
Galveston Causeway to Chocolate Bayou



Latest Survey Collection Date: 03 January 2024

Document Page: 6 of 15

Website Index Number: 56

Authorized Depth: -13ft.

Scale: 1:3,000

Mapped by: M3AOXPAC

Side Slope Ratio: (Rise : Run)

PDF Print Date: 2/5/2024

Additional Imagery info:

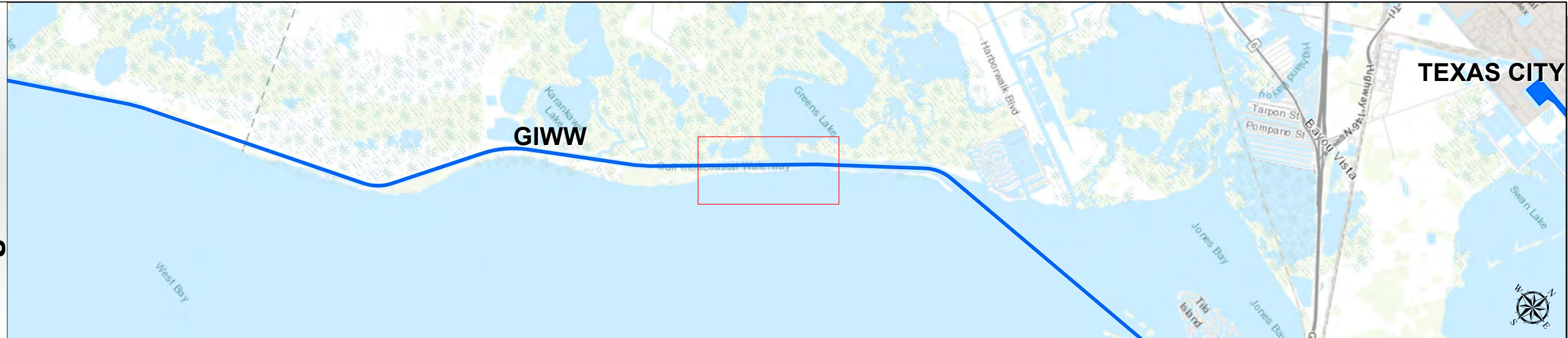
Gulf Intracoastal Waterway: Galveston Causeway to Chocolate Bayou



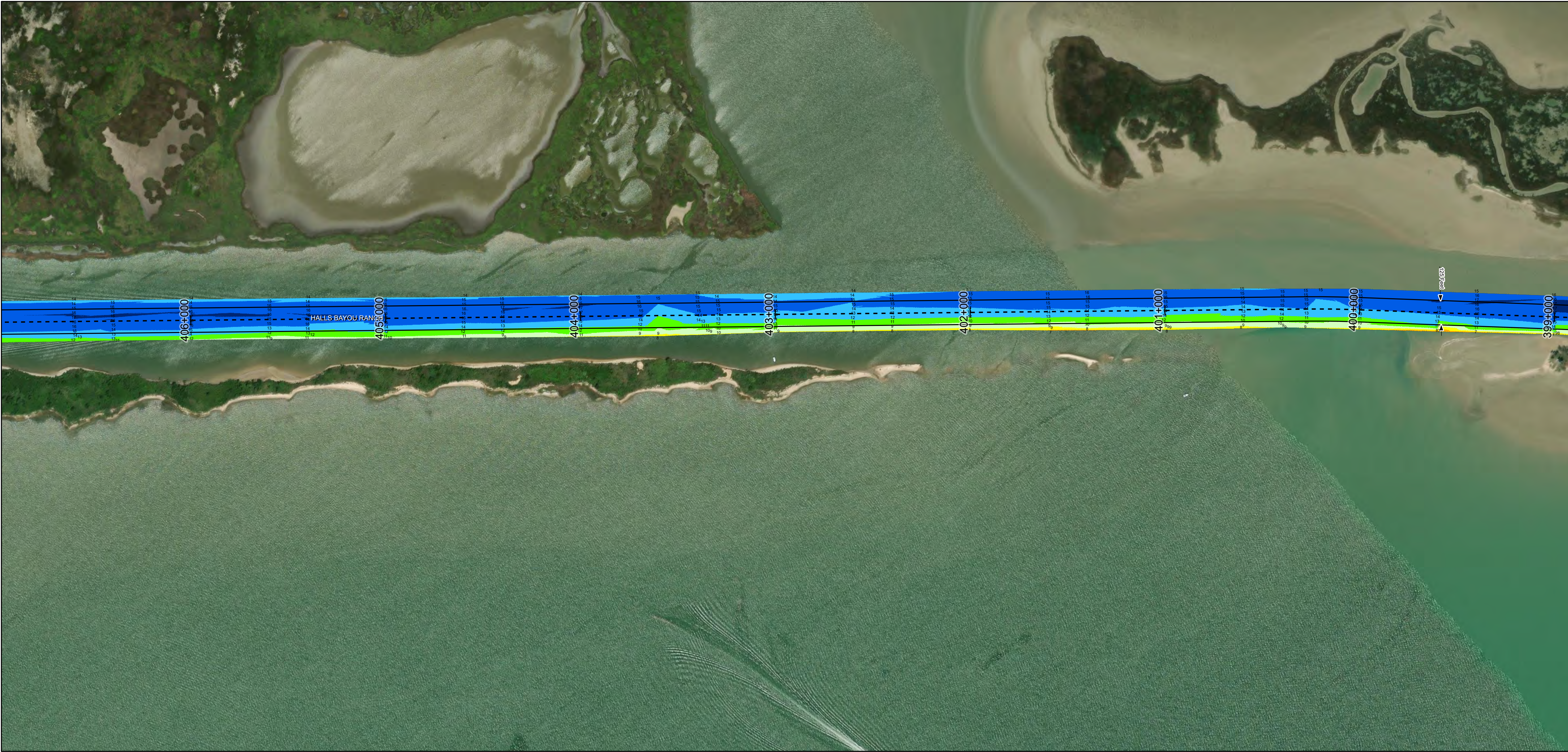
U.S. Army Corps of Engineers
Galveston District



Regional Extent



Dredging Reach Extent



Channel Features

- Channel Center Line
- Channel Toe
- Channel Dimensions

Aids to Navigation

- Green Side Aids
- Red Side Aids
- Lights

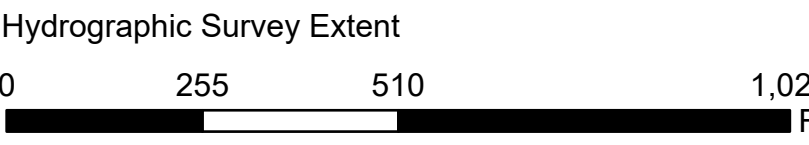
MLLW



NOTES:
1. Horizontal coordinates are referenced to Texas state plane coordinate system, south central zone nad83 survey feet.
2. Elevations are referenced to mean lower low tide (MLLW) datum.
3. This project was designed by the Galveston District of the U.S. Army Corps of Engineers. The initials and signatures and registration designations of individuals appear on these project documents within the scope of their employment as required by 47 CFR 111.01-01152.
4. The information depicted on this survey map represents the results of surveys made on the dates indicated and can only be considered as indicating the general conditions existing at that time. These conditions are subject to rapid change due to shoaling events. A prudent mariner should not rely exclusively on the information provided here. Required by 33 CFR 209.325.
5. For the most up to date information please check our website at: <http://www.svg.usace.army.mil/Missions/Navigation/HydrographicSurveys/>
Service Layer Credits: World Topographic Map: Texas Parks & Wildlife, Esri, HERE, Garmin, INCREMENT P, USGS, METI/NASA, NGA, EPA, USDA
World Imagery: Maxar

Additional Combined Survey Dates and Stationing:
Combined survey dates 20230506_PR_390P000_437P000; 20230520_PR_437P000_465P000;
20231229_PR_360P271_390P000.20240103_PR_390P000_420P000

Coordinate System: NAD 1983 StatePlane Texas South Central FIPS 4204 Feet
Projection: Lambert Conformal Conic



HYDROGRAPHIC SURVEY

U.S. ARMY ENGINEER DISTRICT
CORPS OF ENGINEERS
GALVESTON, TEXAS

Station: 360+270.67 to 465+000
GIWW
Galveston Causeway to Chocolate Bayou



Latest Survey Collection Date: 03 January 2024

Document Page: 7 of 15

Website Index Number: 57

Authorized Depth: -13ft.

Side Slope Ratio: (Rise : Run)

Scale: 1:3,000

Mapped by: M3AOXPAC

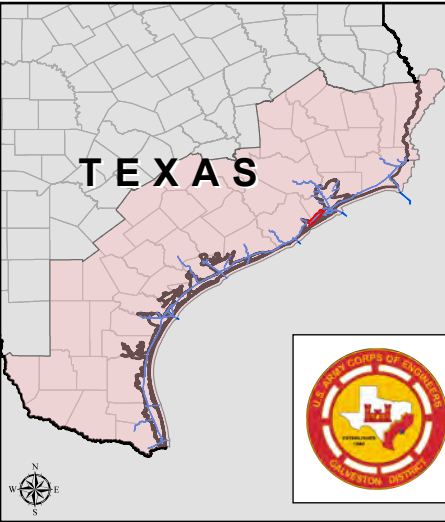
PDF Print Date: 2/5/2024

Additional Imagery info:

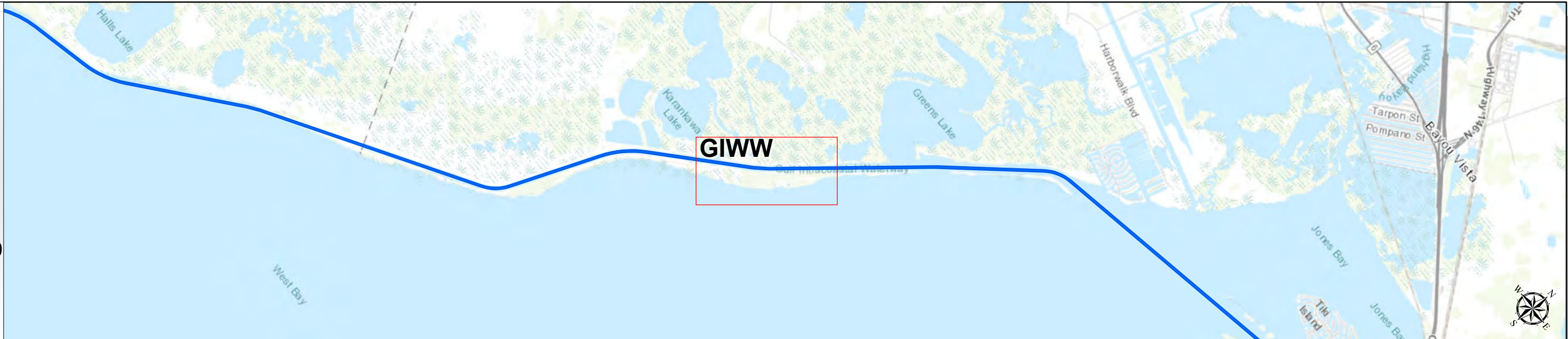
Gulf Intracoastal Waterway: Galveston Causeway to Chocolate Bayou



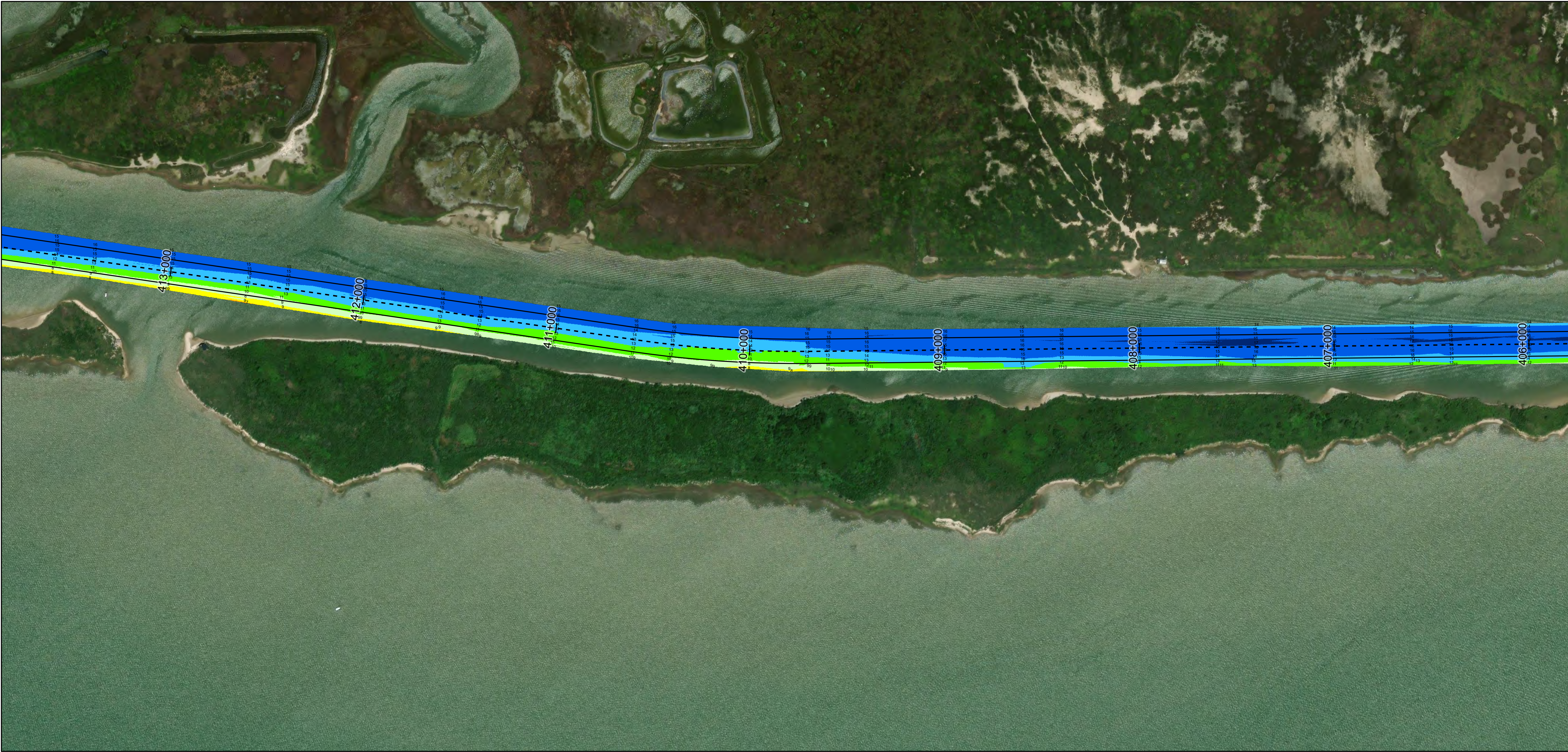
U.S. Army Corps of Engineers
Galveston District



Regional Extent



Dredging Reach Extent



Channel Features

- Channel Center Line
- Channel Toe
- Channel Dimensions

Aids to Navigation

- Green Side Aids
- Red Side Aids
- Lights

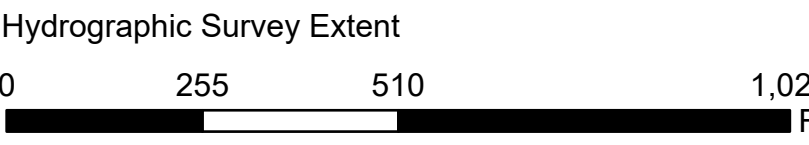
MLLW



NOTES:
1. Horizontal coordinates are referenced to Texas state plane coordinate system, south central zone nad83 us survey feet.
2. Elevations are referenced to mean lower low tide (MLLW) datum.
3. This project was designed by the Galveston District of the U.S. Army Corps of Engineers. The initials and signatures and registration designations of individuals appear on these project documents within the scope of their employment as required by 47 CFR 111.01-01152.
4. The information depicted on this survey map represents the results of surveys made on the dates indicated and can only be considered as indicating the general conditions existing at that time. These conditions are subject to rapid change due to shoaling events. A prudent mariner should not rely exclusively on the information provided here. Required by 33 CFR 209.325.
5. For the most up to date information please check our website at: <http://www.usace.army.mil/Missions/Navigation/HydrographicSurveys/>
Service Layer Credits: World Topographic Map; Texas Parks & Wildlife; Esri, HERE, Garmin, INCREMENT P, USGS, METI/NASA, NGA, EPA, USDA
World Imagery: Maxar

Additional Combined Survey Dates and Stationing:
Combined survey dates 20230506_PR_390P000_437P000; 20230520_PR_437P000_465P000;
20231229_PR_360P271_390P000.20240103_PR_390P000_420P000

Coordinate System: NAD 1983 StatePlane Texas South Central FIPS 4204 Feet
Projection: Lambert Conformal Conic



HYDROGRAPHIC SURVEY

U.S. ARMY ENGINEER DISTRICT
CORPS OF ENGINEERS
GALVESTON, TEXAS

Station: 360+270.67 to 465+000
GIWW
Galveston Causeway to Chocolate Bayou

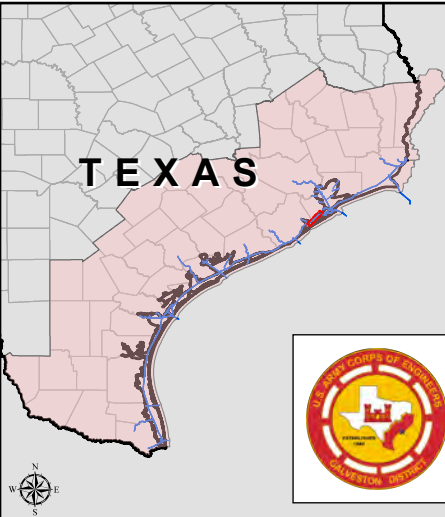
Latest Survey Collection Date: 03 January 2024		Authorized Depth: -13ft.	
Document Page: 8 of 15	Website Index Number: 58	Side Slope Ratio: (Rise : Run)	
Scale: 1:3,000		PDF Print Date: 2/5/2024	
Mapped by: M3AOXPAC			
Additional Imagery info:			



Gulf Intracoastal Waterway: Galveston Causeway to Chocolate Bayou



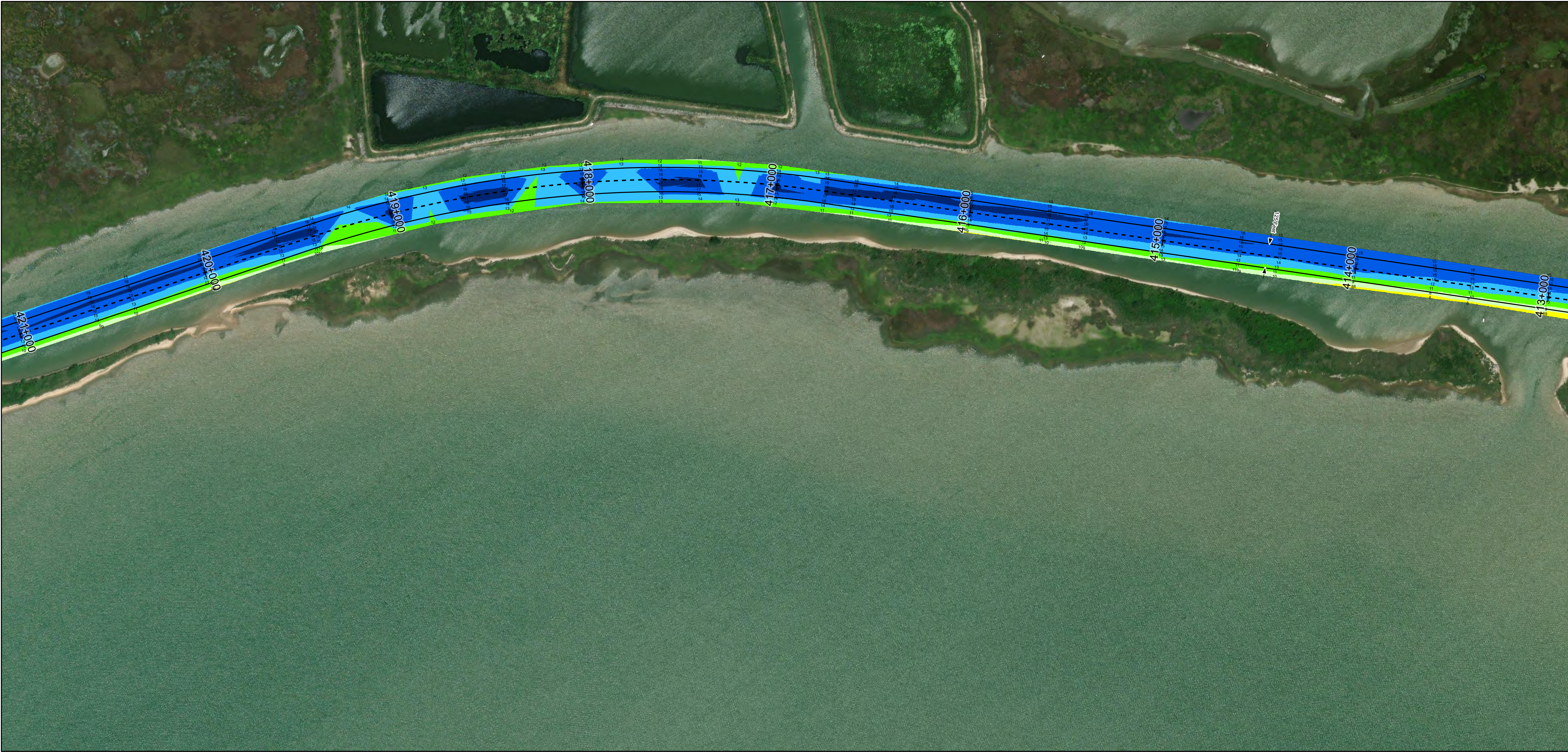
U.S. Army Corps of Engineers
Galveston District



Regional Extent



Dredging Reach Extent



Channel Features

- Channel Center Line
- Channel Toe
- Channel Dimensions

Aids to Navigation

- Green Side Aids
- Red Side Aids
- Lights

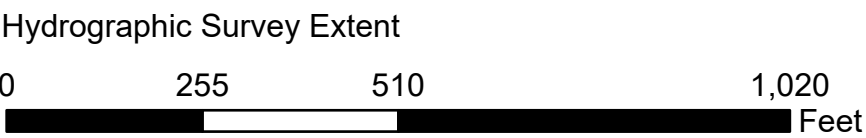
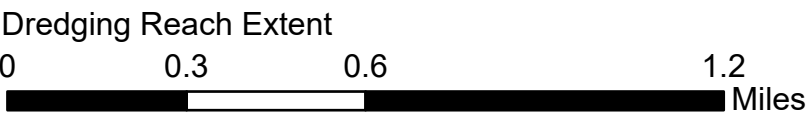
MLLW



NOTES:
1. Horizontal coordinates are referenced to Texas state plane coordinate system, south central zone nad83 us survey feet.
2. Elevations are referenced to mean lower low tide (MLLW) datum.
3. This project was designed by the Galveston District of the U.S. Army Corps of Engineers. The initials and signatures and registration designations of individuals appear on these project documents within the scope of their employment as required by 47 CFR 111.1-111.12.
4. The information depicted on this survey map represents the results of surveys made on the dates indicated and can only be considered as indicating the general conditions existing at that time. These conditions are subject to rapid change due to shoaling events. A prudent mariner should not rely exclusively on the information provided here. Required by 33 CFR 209.325.
5. For the most up to date information please check our website at: <http://www.svg.usace.army.mil/Missions/Navigation/HydrographicSurveys/>
Service Layer Credits: World Topographic Map: Texas Parks & Wildlife, Esri, HERE, Garmin, INCREMENT P, USGS, MET/NASA, NGA, EPA, USDA
World Imagery: Maxar

Additional Combined Survey Dates and Stationing:
Combined survey dates 20230506_PR_390P000_437P000; 20230520_PR_437P000_465P000;
20231229_PR_360P271_390P000.20240103_PR_390P000_420P000

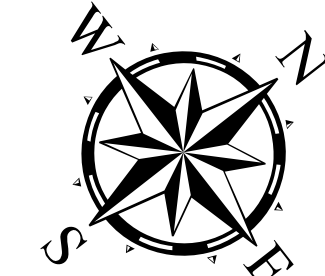
Coordinate System: NAD 1983 StatePlane Texas South Central FIPS 4204 Feet
Projection: Lambert Conformal Conic



HYDROGRAPHIC SURVEY

U.S. ARMY ENGINEER DISTRICT
CORPS OF ENGINEERS
GALVESTON, TEXAS

Station: 360+270.67 to 465+000
GIWW
Galveston Causeway to Chocolate Bayou



Latest Survey Collection Date: 03 January 2024

Document Page: 9 of 15

Website Index Number: 59

Scale: 1:3,000

Mapped by: M3AOXPAC

Additional Imagery info:

Authorized Depth: -13ft.

Side Slope Ratio: (Rise : Run)

PDF Print Date: 2/5/2024

Gulf Intracoastal Waterway: Galveston Causeway to Chocolate Bayou



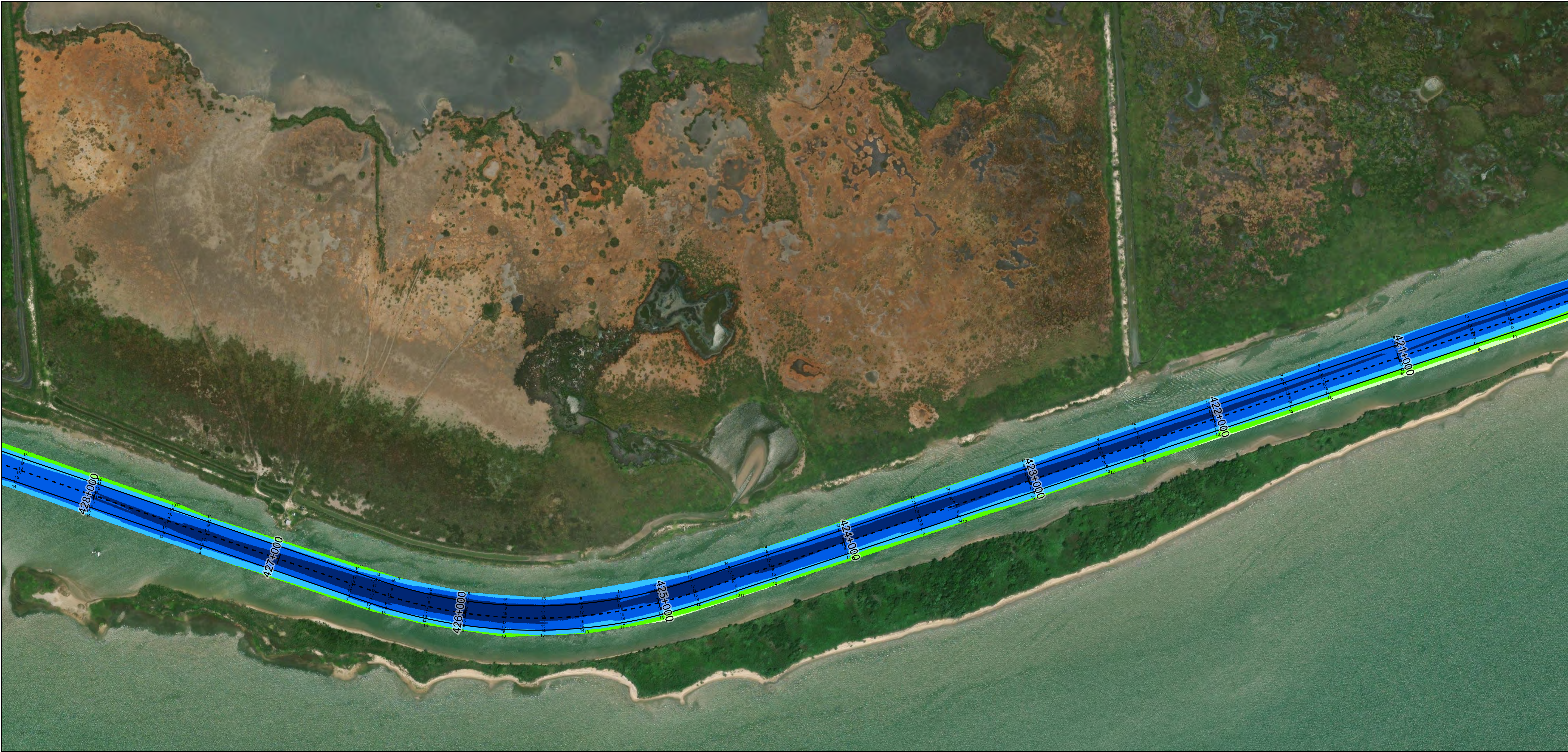
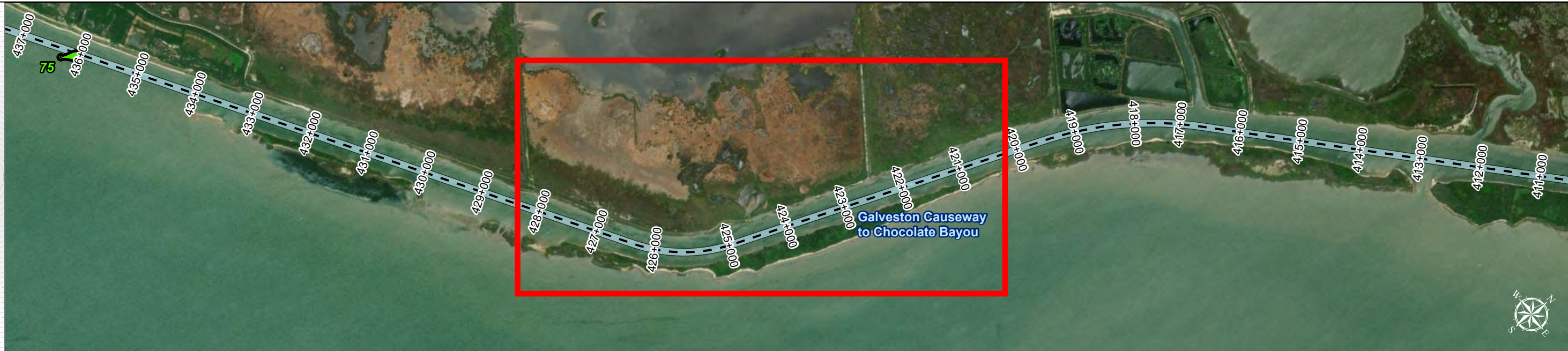
U.S. Army Corps of Engineers
Galveston District



Regional Extent



Dredging Reach Extent



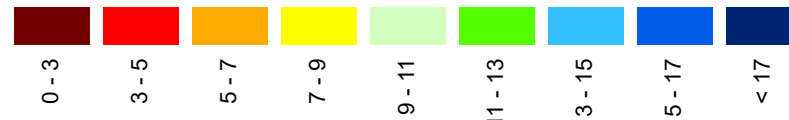
Channel Features

- Channel Center Line
- Channel Toe
- Channel Dimensions

Aids to Navigation

- Green Side Aids
- Red Side Aids
- Lights

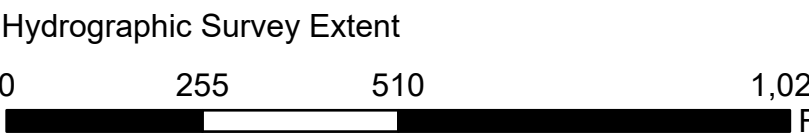
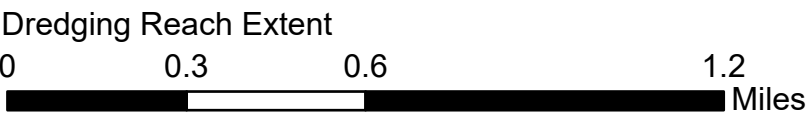
MLLW



NOTES:
1. Horizontal coordinates are referenced to Texas state plane coordinate system, south central zone nad83 us survey feet.
2. Elevations are referenced to mean lower low tide (MLLW) datum.
3. This project was designed by the Galveston District of the U.S. Army Corps of Engineers. The initials and signatures and registration designations of individuals appear on these project documents within the scope of their employment as required by 47 CFR 111.101-111.102.
4. The information depicted on this survey map represents the results of surveys made on the dates indicated and can only be considered as indicating the general conditions existing at that time. These conditions are subject to rapid change due to shoaling events. A prudent mariner should not rely exclusively on the information provided here. Required by 33 CFR 209.325.
5. For the most up to date information please check our website at: <http://www.usace.army.mil/Missions/Navigation/HydrographicSurveys/>
Service Layer Credits: World Topographic Map: Texas Parks & Wildlife, Esri, HERE, Garmin, INCREMENT P, USGS, METI/NASA, NGA, EPA, USDA
World Imagery: Maxar

Additional Combined Survey Dates and Stationing:
Combined survey dates 20230506_PR_390P000_437P000; 20230520_PR_437P000_465P000;
20231229_PR_360P271_390P000.20240103_PR_390P000_420P000

Coordinate System: NAD 1983 StatePlane Texas South Central FIPS 4204 Feet
Projection: Lambert Conformal Conic



HYDROGRAPHIC SURVEY

U.S. ARMY ENGINEER DISTRICT
CORPS OF ENGINEERS
GALVESTON, TEXAS

Station: 360+270.67 to 465+000
GIWW
Galveston Causeway to Chocolate Bayou



Latest Survey Collection Date: 03 January 2024

Document Page: 10 of 15

Scale: 1:3,000

Mapped by: M3AOXPAC

Additional Imagery info:

Authorized Depth: -13ft.

Side Slope Ratio: (Rise : Run)

PDF Print Date: 2/5/2024

Website Index Number: 60

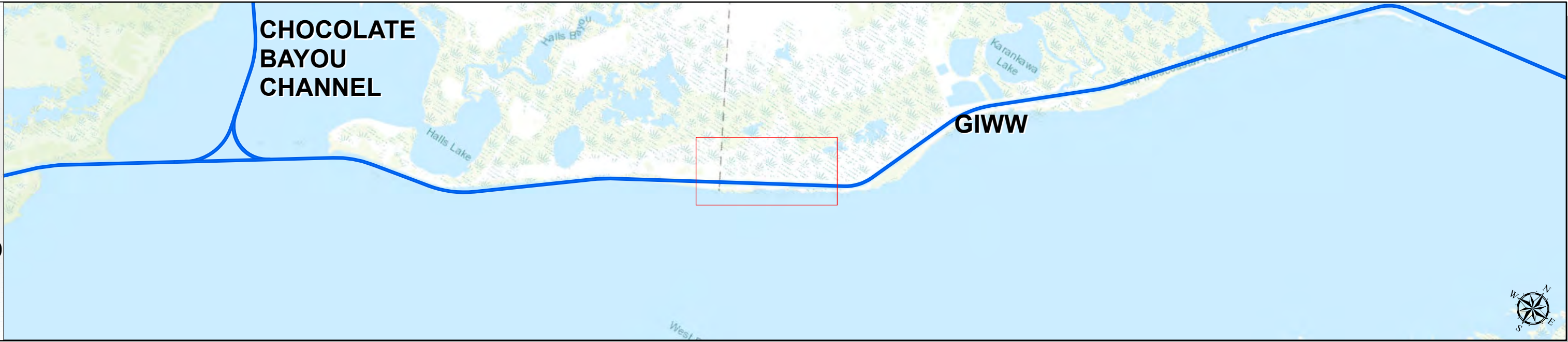
Gulf Intracoastal Waterway: Galveston Causeway to Chocolate Bayou



U.S. Army Corps of Engineers
Galveston District



Regional Extent



Dredging Reach Extent



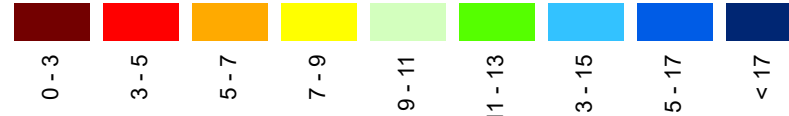
Channel Features

- Channel Center Line
- Channel Toe
- Channel Dimensions

Aids to Navigation

- Green Side Aids
- Red Side Aids
- Lights

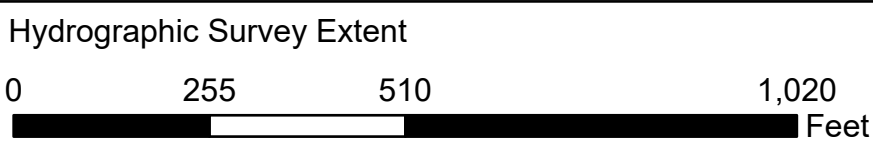
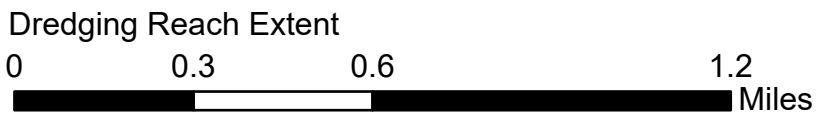
MLLW



NOTES:
1. Horizontal coordinates are referenced to Texas state plane coordinate system, south central zone nad83 us survey feet.
2. Elevations are referenced to mean lower low tide (MLLW) datum.
3. This project was designed by the galveston district of the u.s. army corps of engineers. The initials and signatures and registration designations of individuals appear on these project documents within the scope of their employment as required by er11101-g1152.
4. The information depicted on this survey map represents the results of surveys made on the dates indicated and can only be considered as indicating the general conditions existing at that time. These conditions are subject to rapid change due to shoaling events. A prudent mariner should not rely exclusively on the information provided here. Required by 33 or 209.325
5. For the most up to date information please check our website at: <http://www.svg.usace.army.mil/Missions/Navigation/HydrographicSurveys/>
Service Layer Credits: World Topographic Map: Texas Parks & Wildlife, Esri, HERE, Garmin, INCREMENT P, USGS, MET/NASA, NGA, EPA, USDA
World Imagery: Maxar

Additional Combined Survey Dates and Stationing:
Combined survey dates 20230506_PR_390P000_437P000; 20230520_PR_437P000_465P000;
20231229_PR_360P271_390P000.20240103_PR_390P000_420P000

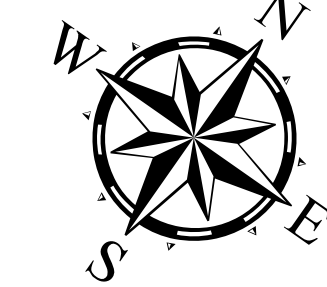
Coordinate System: NAD 1983 StatePlane Texas South Central FIPS 4204 Feet
Projection: Lambert Conformal Conic



HYDROGRAPHIC SURVEY

U.S. ARMY ENGINEER DISTRICT
CORPS OF ENGINEERS
GALVESTON, TEXAS

Station: 360+270.67 to 465+000
GIWW
Galveston Causeway to Chocolate Bayou



Latest Survey Collection Date: 03 January 2024

Document Page: 11 of 15

Authorized Depth: -13ft.

Side Slope Ratio: (Rise : Run)

Website Index Number: 61

PDF Print Date: 2/5/2024

Scale: 1:3,000

Mapped by: M3AOXPAC

Additional Imagery info:

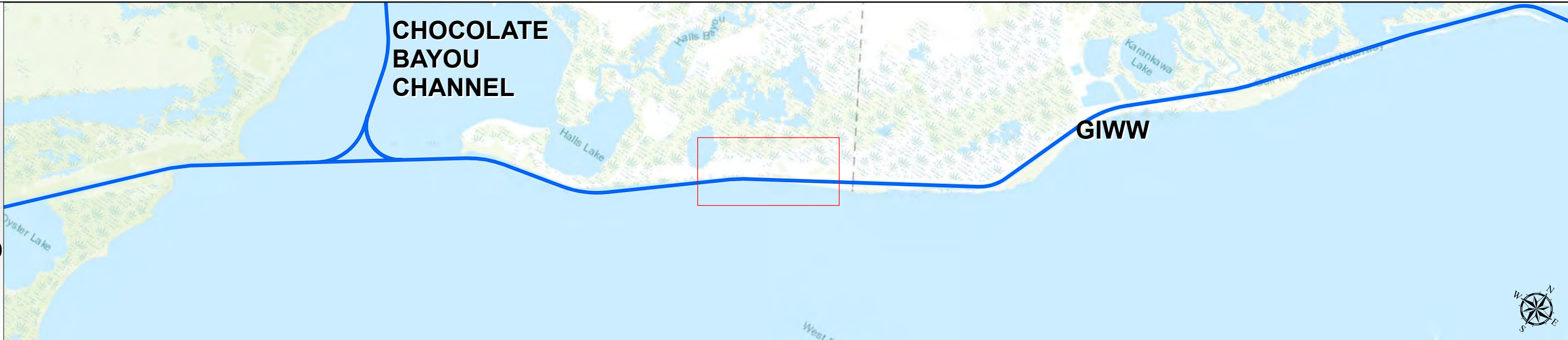
Gulf Intracoastal Waterway: Galveston Causeway to Chocolate Bayou



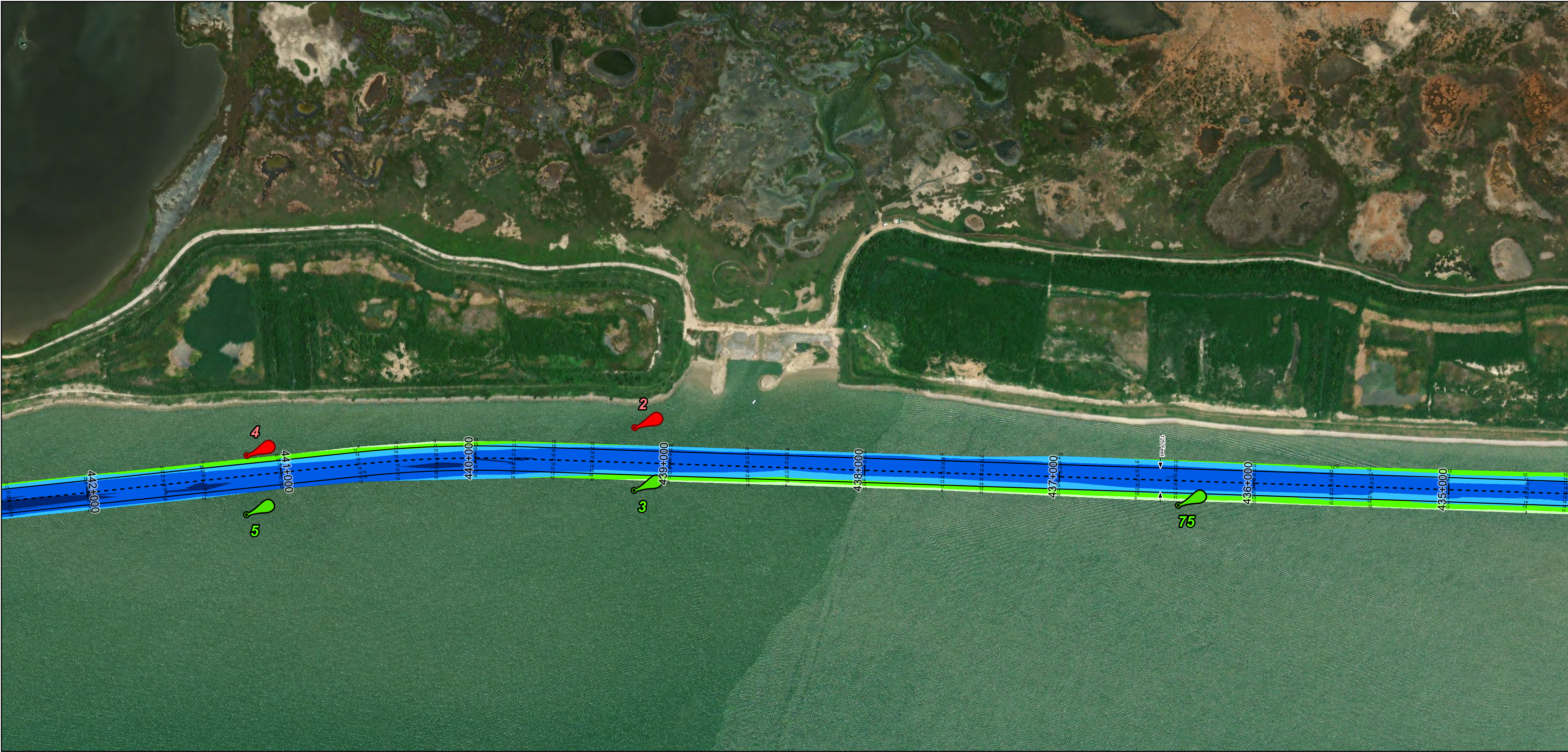
U.S. Army Corps of Engineers
Galveston District



Regional Extent



Dredging Reach Extent



Channel Features

- Channel Center Line
- Channel Toe
- Channel Dimensions

Aids to Navigation

- Green Side Aids
- Red Side Aids
- Lights

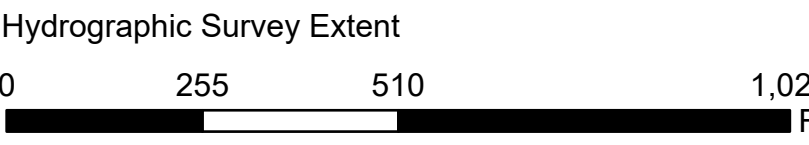
MLLW



NOTES:
1. Horizontal coordinates are referenced to Texas state plane coordinate system, south central zone nad83 us survey feet.
2. Elevations are referenced to mean lower low tide (MLLW) datum.
3. This project was designed by the Galveston District of the U.S. Army Corps of Engineers. The initials and signatures and registration designations of individuals appear on these project documents within the scope of their employment as required by 47 CFR 111.11-111.12.
4. The information depicted on this survey map represents the results of surveys made on the dates indicated and can only be considered as indicating the general conditions existing at that time. These conditions are subject to rapid change due to shoaling events. A prudent mariner should not rely exclusively on the information provided here. Required by 33 CFR 200.325.
5. For the most up to date information please check our website at: <http://www.svg.usace.army.mil/Missions/Navigation/HydrographicSurveys/>
Service Layer Credits: World Topographic Map: Brazoria County, Texas Parks & Wildlife, Esri, HERE, Garmin, INCREMENT P, USGS, METI/NASA, NOAA, EPA, USDA
World Imagery: Maxar

Additional Combined Survey Dates and Stationing:
Combined survey dates 20230506_PR_390P000_437P000; 20230520_PR_437P000_465P000;
20231229_PR_360P271_390P000.20240103_PR_390P000_420P000

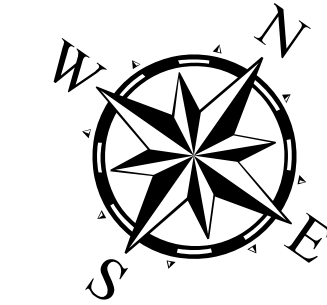
Coordinate System: NAD 1983 StatePlane Texas South Central FIPS 4204 Feet
Projection: Lambert Conformal Conic



HYDROGRAPHIC SURVEY

U.S. ARMY ENGINEER DISTRICT
CORPS OF ENGINEERS
GALVESTON, TEXAS

Station: 360+270.67 to 465+000
GIWW
Galveston Causeway to Chocolate Bayou



Latest Survey Collection Date: 03 January 2024

Document Page: 12 of 15

Authorized Depth: -13ft.

Side Slope Ratio: (Rise : Run)

Website Index Number: 62

PDF Print Date: 2/5/2024

Scale: 1:3,000

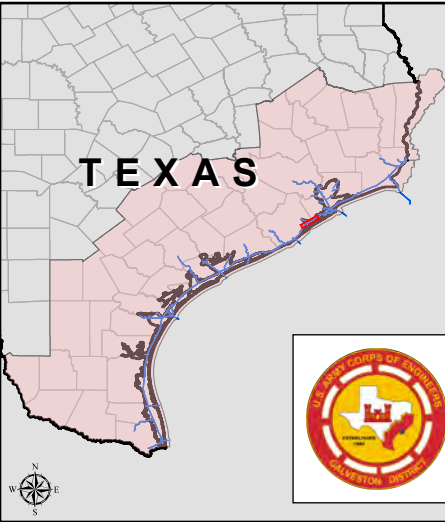
Mapped by: M3AOXPAC

Additional Imagery info:

Gulf Intracoastal Waterway: Galveston Causeway to Chocolate Bayou



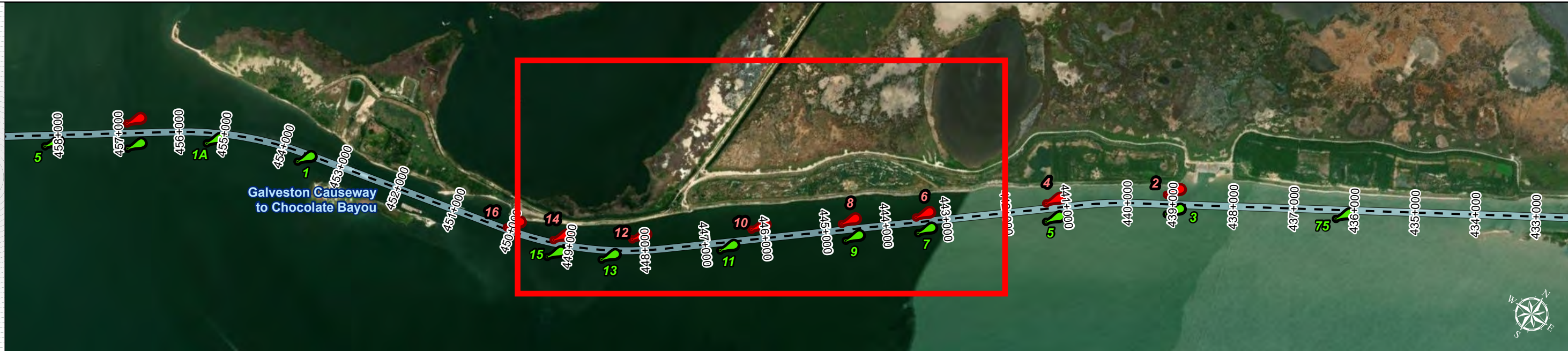
U.S. Army Corps of Engineers
Galveston District



Regional Extent



Dredging Reach Extent



Channel Features

- Channel Center Line
- Channel Toe
- Channel Dimensions

Aids to Navigation

- Green Side Aids
- Red Side Aids
- Lights

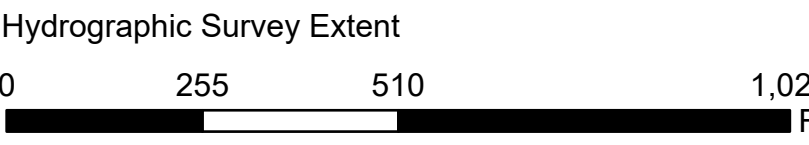
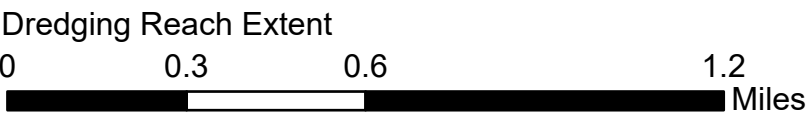
MLLW



NOTES:
1. Horizontal coordinates are referenced to Texas state plane coordinate system, south central zone nad83 us survey feet.
2. Elevations are referenced to mean lower low tide (MLLW) datum.
3. This project was designed by the Galveston District of the U.S. Army Corps of Engineers. The initials and signatures and registration designations of individuals appear on these project documents within the scope of their employment as required by 47 CFR 111.111-111.112.
4. The information depicted on this survey map represents the results of surveys made on the dates indicated and can only be considered as indicating the general conditions existing at that time. These conditions are subject to rapid change due to shoaling events. A prudent mariner should not rely exclusively on the information provided here. Required by 33 CFR 209.325.
5. For the most up to date information please check our website at: <http://www.svg.usace.army.mil/Missions/Navigation/HydrographicSurveys/>
Service Layer Credits: World Topographic Map: Brazoria County, Texas Parks & Wildlife, Esri, HERE, Garmin, INCREMENT P, USGS, METI/NASA, NSA, EPA, USDA, World Imagery: Maxar

Additional Combined Survey Dates and Stationing:
Combined survey dates 20230506_PR_390P000_437P000; 20230520_PR_437P000_465P000;
20231229_PR_360P271_390P000.20240103_PR_390P000_420P000

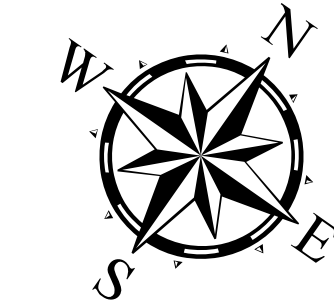
Coordinate System: NAD 1983 StatePlane Texas South Central FIPS 4204 Feet
Projection: Lambert Conformal Conic



HYDROGRAPHIC SURVEY

U.S. ARMY ENGINEER DISTRICT
CORPS OF ENGINEERS
GALVESTON, TEXAS

Station: 360+270.67 to 465+000
GIWW
Galveston Causeway to Chocolate Bayou



Latest Survey Collection Date: 03 January 2024

Document Page: 13 of 15

Authorized Depth: -13ft.

Side Slope Ratio: (Rise : Run)

PDF Print Date: 2/5/2024

Website Index Number: 63

Scale: 1:3,000

Mapped by: M3AOXPAC

Additional Imagery info:

Gulf Intracoastal Waterway: Galveston Causeway to Chocolate Bayou



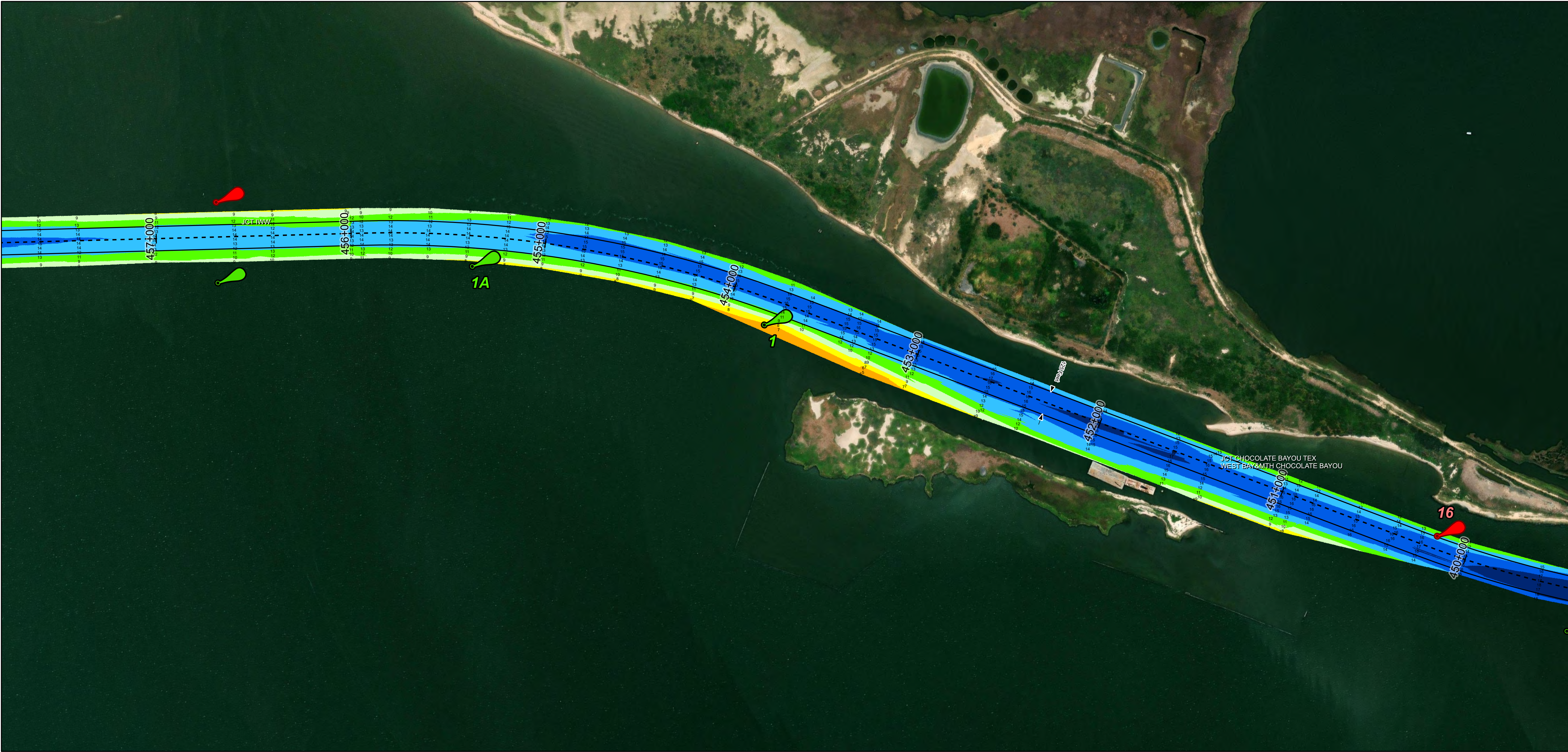
U.S. Army Corps of Engineers
Galveston District



Regional Extent



Dredging Reach Extent



Channel Features

- Channel Center Line
- Channel Toe
- Channel Dimensions

Aids to Navigation

- Green Side Aids
- Red Side Aids
- Lights

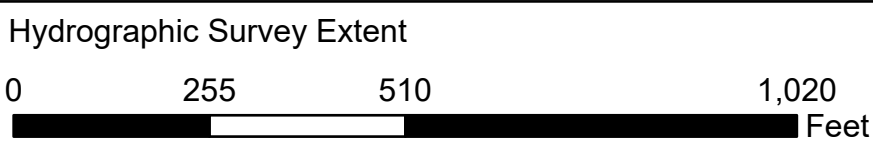
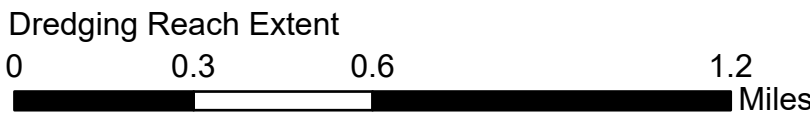
MLLW



NOTES:
1. Horizontal coordinates are referenced to Texas state plane coordinate system, south central zone nad83 us survey feet.
2. Elevations are referenced to mean lower low tide (MLLW) datum.
3. This project was designed by the Galveston District of the U.S. Army Corps of Engineers. The initials and signatures and registration designations of individuals appear on these project documents within the scope of their employment as required by 47 CFR 111.01-01152.
4. The information depicted on this survey map represents the results of surveys made on the dates indicated and can only be considered as indicating the general conditions existing at that time. These conditions are subject to rapid change due to shoaling events. A prudent mariner should not rely exclusively on the information provided here. Required by 33 CFR 209.325.
5. For the most up to date information please check our website at: <http://www.svg.usace.army.mil/Missions/Navigation/HydrographicSurveys/>
Service Layer Credits: World Topographic Map: Brazoria County, Texas Parks & Wildlife, Esri, HERE, Garmin, INCREMENT P, USGS, METINASA, NGA, EPA, USDA
World Imagery: Maxar

Additional Combined Survey Dates and Stationing:
Combined survey dates 20230506_PR_390P000_437P000; 20230520_PR_437P000_465P000;
20231229_PR_360P271_390P000.20240103_PR_390P000_420P000

Coordinate System: NAD 1983 StatePlane Texas South Central FIPS 4204 Feet
Projection: Lambert Conformal Conic



HYDROGRAPHIC SURVEY

U.S. ARMY ENGINEER DISTRICT
CORPS OF ENGINEERS
GALVESTON, TEXAS
Station: 360+270.67 to 465+000
GIWW
Galveston Causeway to Chocolate Bayou

Latest Survey Collection Date: 03 January 2024

Document Page: 14 of 15 Website Index Number: 64

Scale: 1:3,000

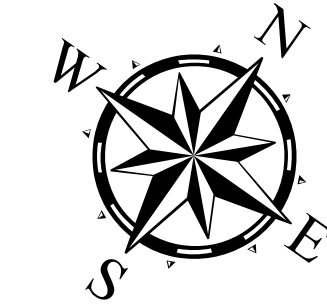
Mapped by: M3AOXPAC

Additional Imagery info:

Authorized Depth: -13ft.

Side Slope Ratio: (Rise : Run)

PDF Print Date: 2/5/2024



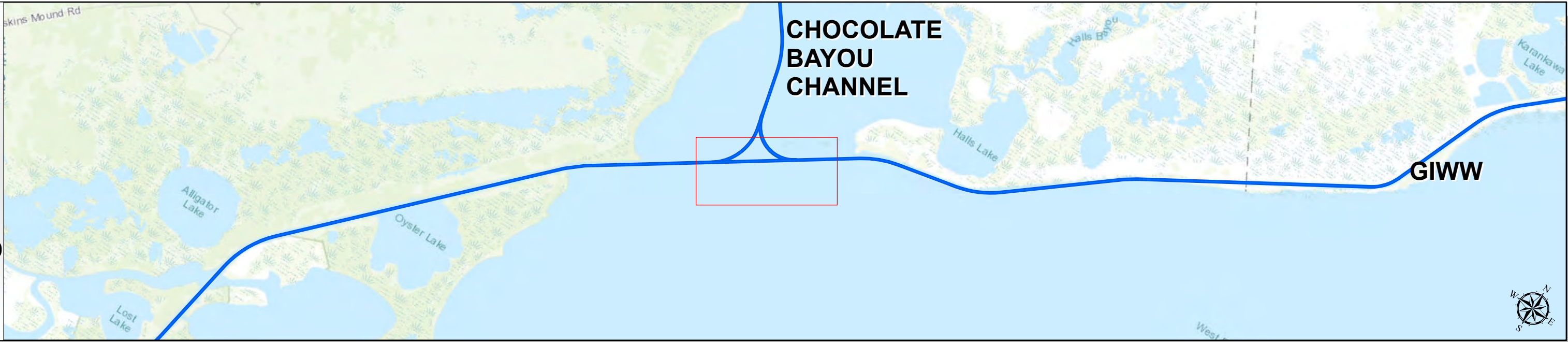
Gulf Intracoastal Waterway: Galveston Causeway to Chocolate Bayou



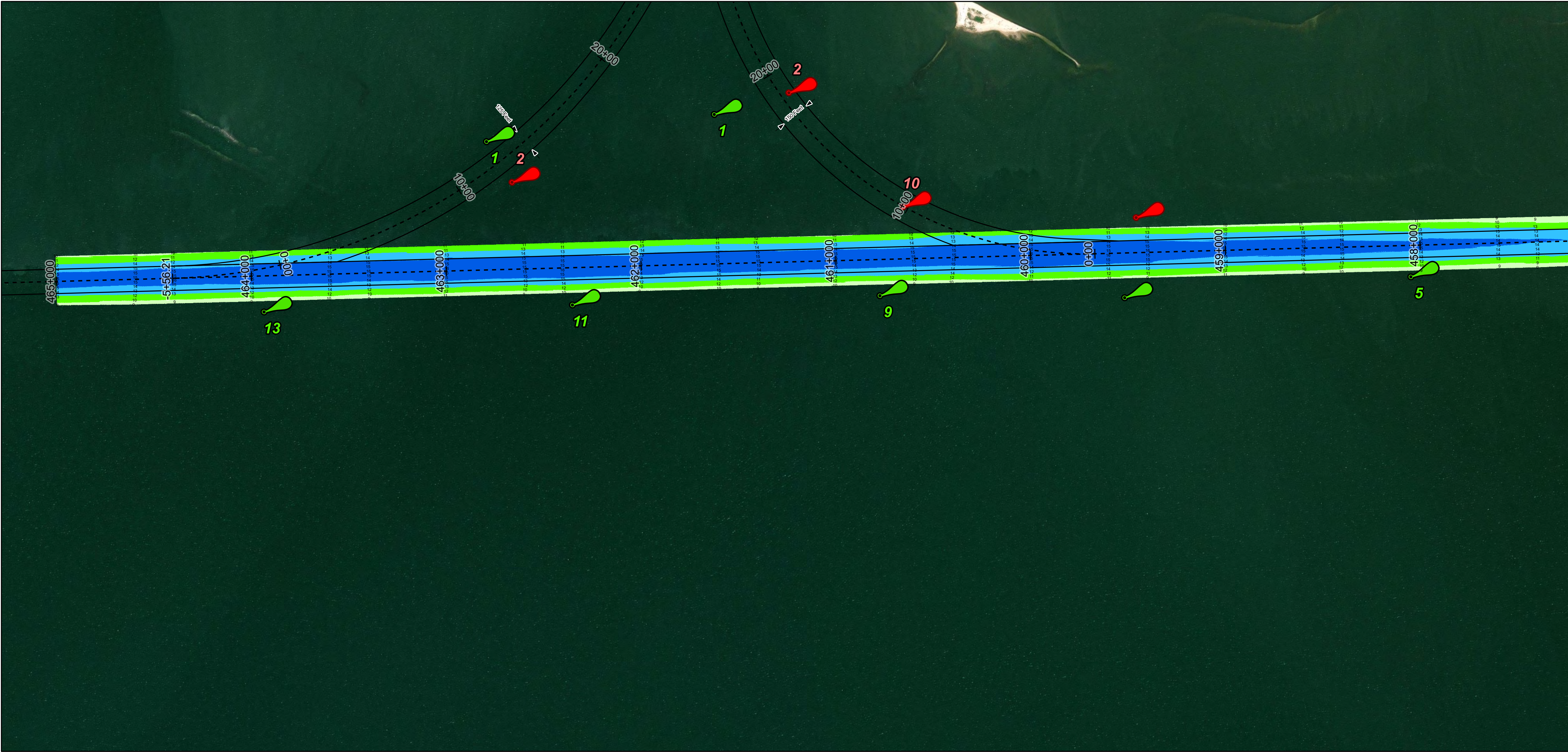
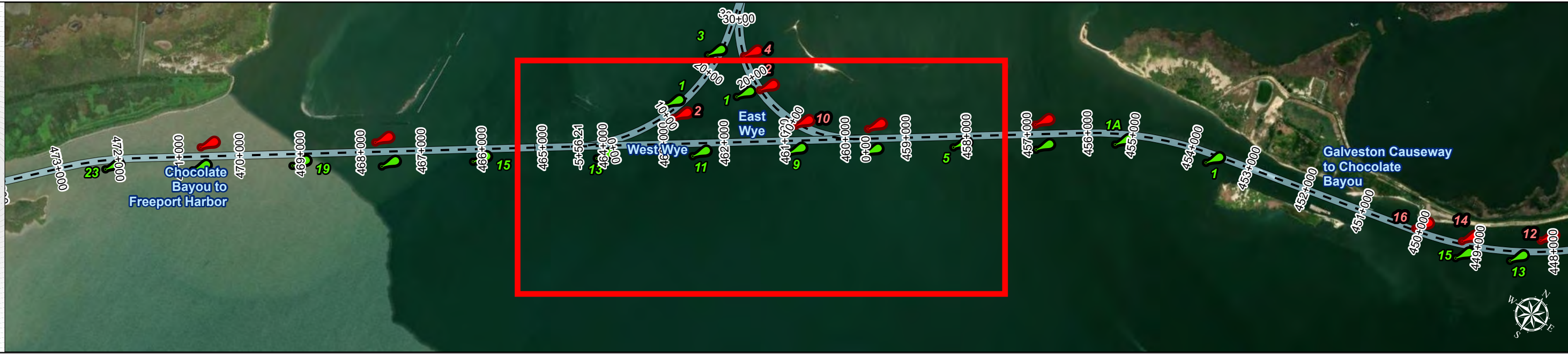
U.S. Army Corps of Engineers
Galveston District



Regional Extent



Dredging Reach Extent



Channel Features

- Channel Center Line
- Channel Toe
- Channel Dimensions

Aids to Navigation

- Green Side Aids
- Red Side Aids
- Lights

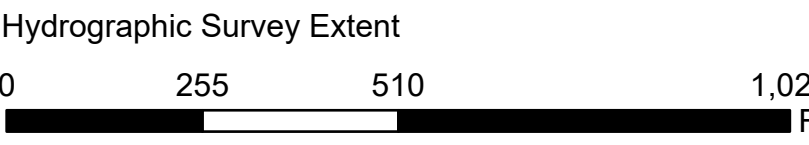
MLLW



NOTES:
1. Horizontal coordinates are referenced to Texas state plane coordinate system, south central zone nad83 us survey feet.
2. Elevations are referenced to mean lower low tide (MLLW) datum.
3. This project was designed by the Galveston District of the U.S. Army Corps of Engineers. The initials and signatures and registration designations of individuals appear on these project documents within the scope of their employment as required by 47 CFR 111.11-111.12.
4. The information depicted on this survey map represents the results of surveys made on the dates indicated and can only be considered as indicating the general conditions existing at that time. These conditions are subject to rapid change due to shoaling events. A prudent mariner should not rely exclusively on the information provided here. Required by 33 CFR 209.325.
5. For the most up to date information please check our website at: <http://www.usace.army.mil/Missions/Navigation/HydrographicSurveys/>
Service Layer Credits: World Topographic Map: Brazoria County, Texas Parks & Wildlife, Esri, HERE, Garmin, INCREMENT P, USGS, METINASA, NGA, EPA, USDA
World Imagery: Maxar

Additional Combined Survey Dates and Stationing:
Combined survey dates 20230506_PR_390P000_437P000; 20230520_PR_437P000_465P000;
20231229_PR_360P271_390P000.20240103_PR_390P000_420P000

Coordinate System: NAD 1983 StatePlane Texas South Central FIPS 4204 Feet
Projection: Lambert Conformal Conic



HYDROGRAPHIC SURVEY

U.S. ARMY ENGINEER DISTRICT
CORPS OF ENGINEERS
GALVESTON, TEXAS

Station: 360+270.67 to 465+000
GIWW
Galveston Causeway to Chocolate Bayou

Latest Survey Collection Date: 03 January 2024
Document Page: 15 of 15
Scale: 1:3,000
Mapped by: M3AOXPAC
Additional Imagery info:

Authorized Depth: -13ft.
Side Slope Ratio: (Rise : Run)
PDF Print Date: 2/5/2024

Website Index Number: 65
Scale: 1:3,000
Mapped by: M3AOXPAC
Additional Imagery info: