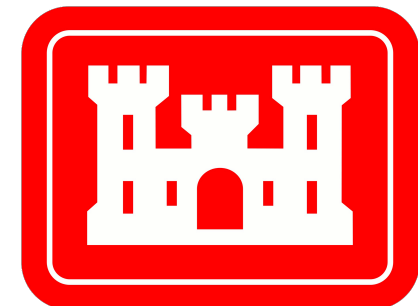


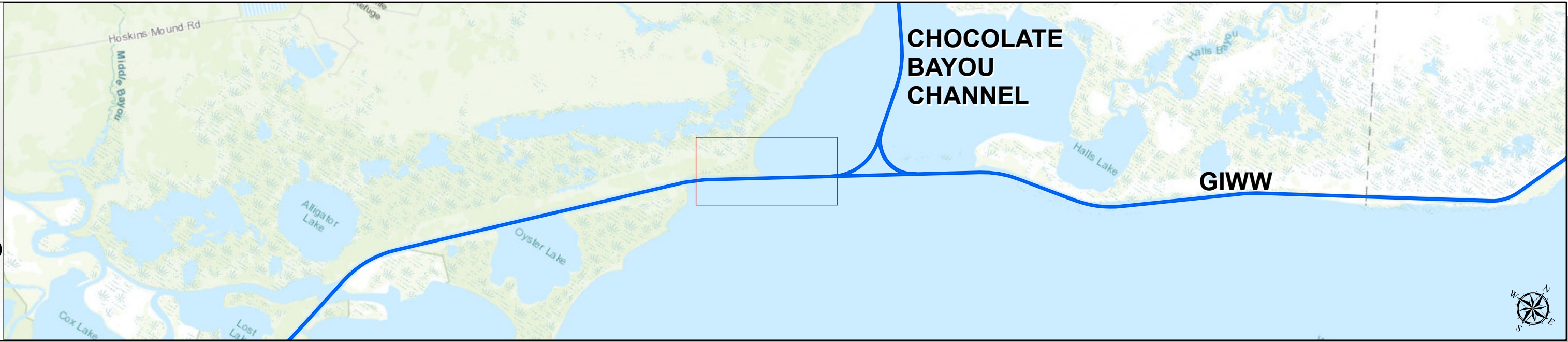
Gulf Intracoastal Waterway: Chocolate Bayou to Freeport Harbor



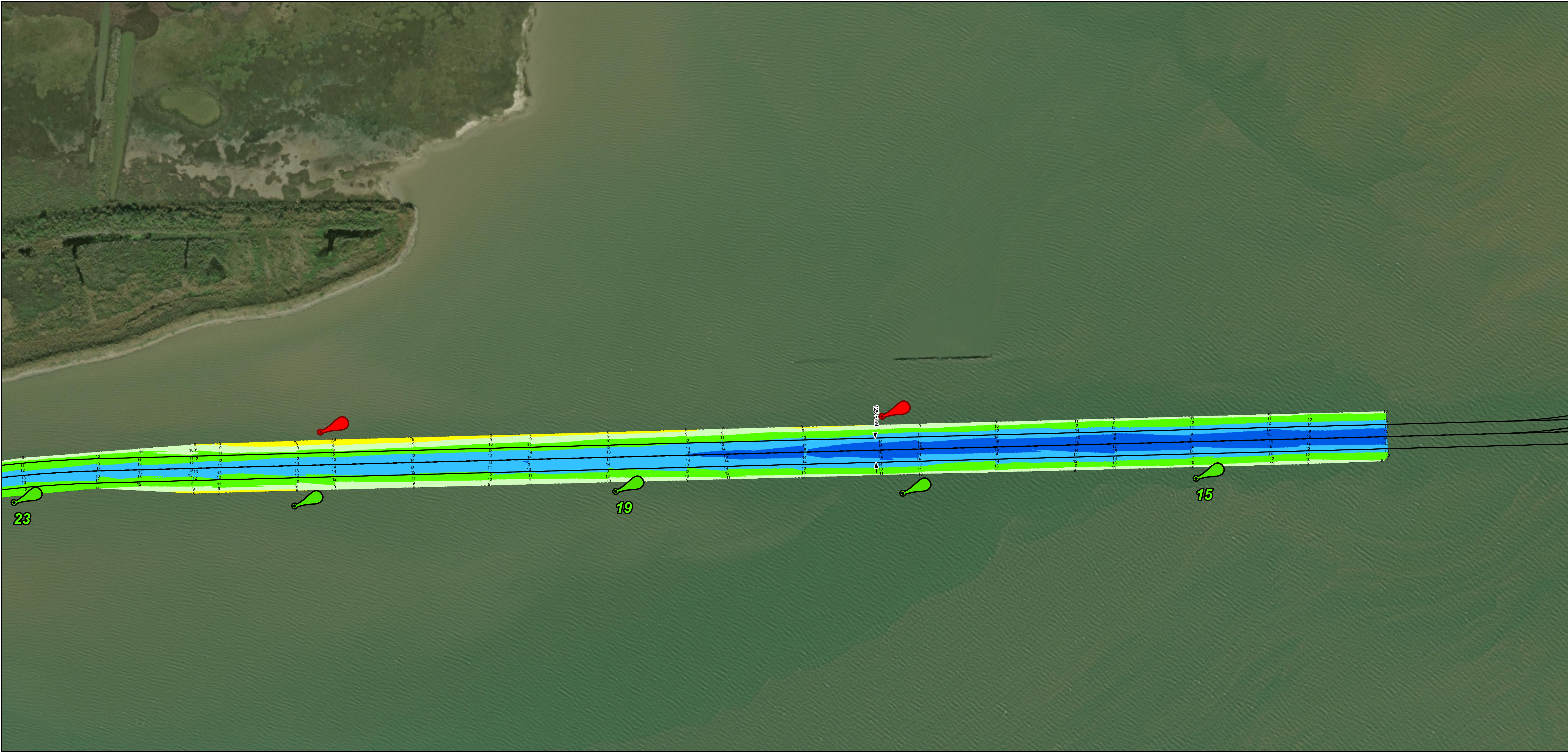
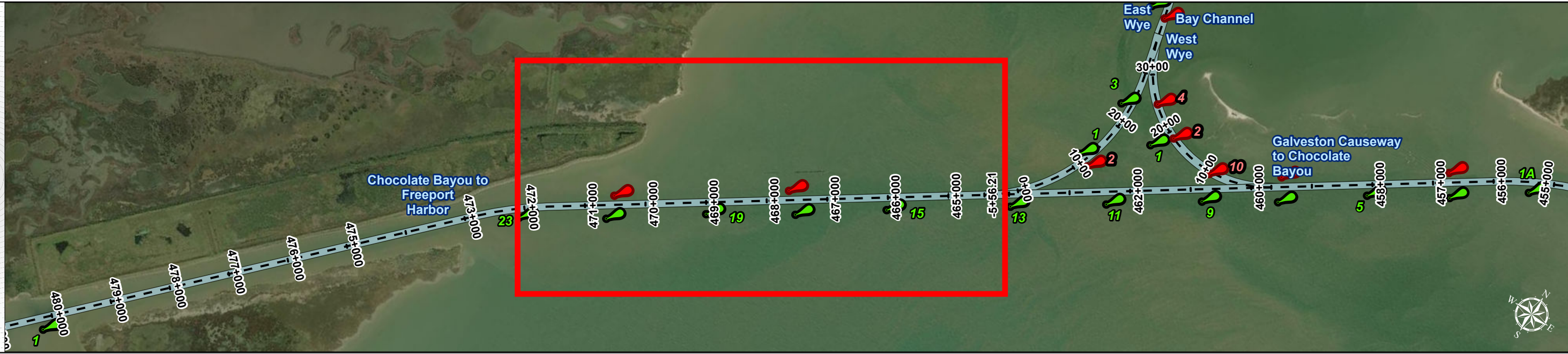
U.S. Army Corps of Engineers
Galveston District



Regional Extent



Dredging Reach Extent



Channel Features

- Channel Center Line
- Channel Toe
- Channel Station Lines
- Channel Dimensions

Aids to Navigation

- Green Side Aids
- Red Side Aids
- Lights

MLLW



NOTES:

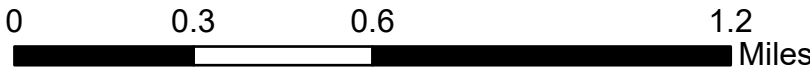
- Horizontal coordinates are referenced to Texas state plane coordinate system, south central zone nad83 us survey feet.
 - Elevations are referenced to mean lower low tide (MLLW) datum.
 - This project was designed by the Galveston District of the U.S. Army Corps of Engineers. The initials and signatures and registration designations of individuals appear on these project documents within the scope of their employment as required by 47 CFR 111.01-0112.
 - The information depicted on this survey map represents the results of surveys made on the dates indicated and can only be considered as indicating the general conditions existing at that time. These conditions are subject to rapid change due to shoaling events. A prudent mariner should not rely exclusively on the information provided here. Required by 33 CFR 200.325.
 - For the most up to date information please check our website at: <http://www.svg.usace.army.mil/Missions/Navigation/HydrographicSurveys/>
- Service Layer Credits: World Topographic Map: Brazoria County, Texas Parks & Wildlife, Esri, HERE, Garmin, INCREMENT P, USGS, METINASA, NGA, EPA, USDA
World Imagery: Maxar

Additional Combined Survey Dates and Stationing:

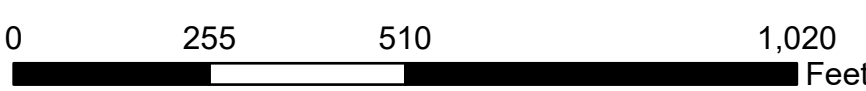
Combined survey dates 20230314_CS; 20230324_AD_1_563P000_564P000

Coordinate System: NAD 1983 StatePlane Texas South Central FIPS 4204 Feet
Projection: Lambert Conformal Conic

Dredging Reach Extent



Hydrographic Survey Extent



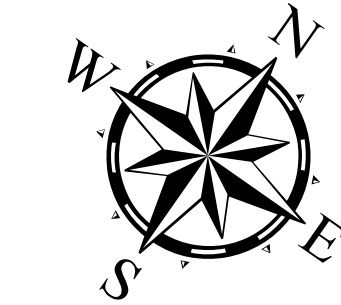
HYDROGRAPHIC SURVEY

U.S. ARMY ENGINEER DISTRICT
CORPS OF ENGINEERS
GALVESTON, TEXAS

Station: 465+000 to 564+000

GIWW

Chocolate Bayou to Freeport Harbor



Latest Survey Collection Date: 24 March 2023

Document Page: 1 of 14

Website Index Number: 66

Scale: 1:3,000

Mapped by: M3AOXPAC

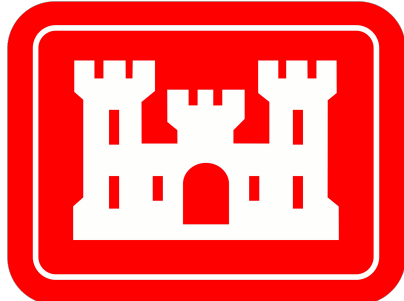
Additional Imagery info:

Authorized Depth: -13ft.

Side Slope Ratio: (Rise : Run)

PDF Print Date: 3/28/2023

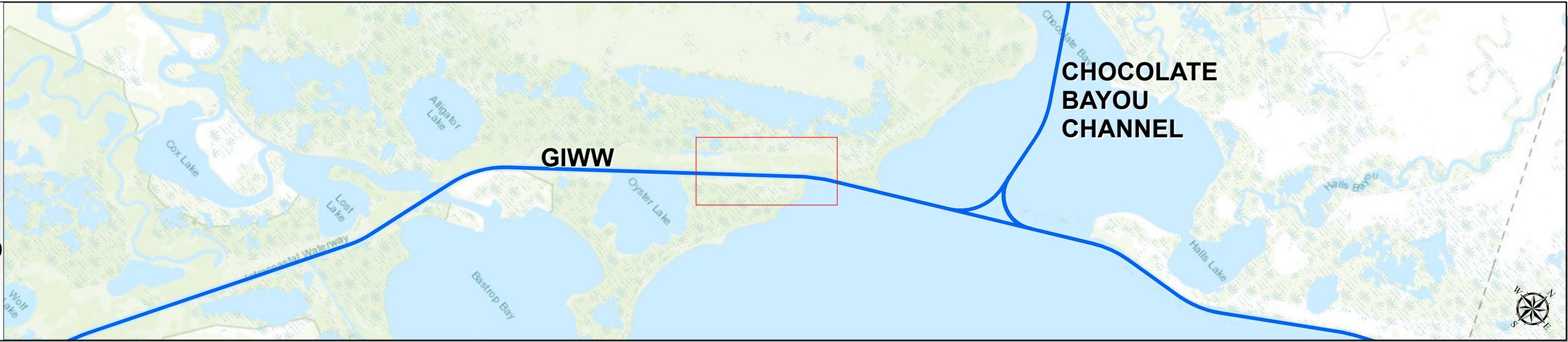
Gulf Intracoastal Waterway: Chocolate Bayou to Freeport Harbor



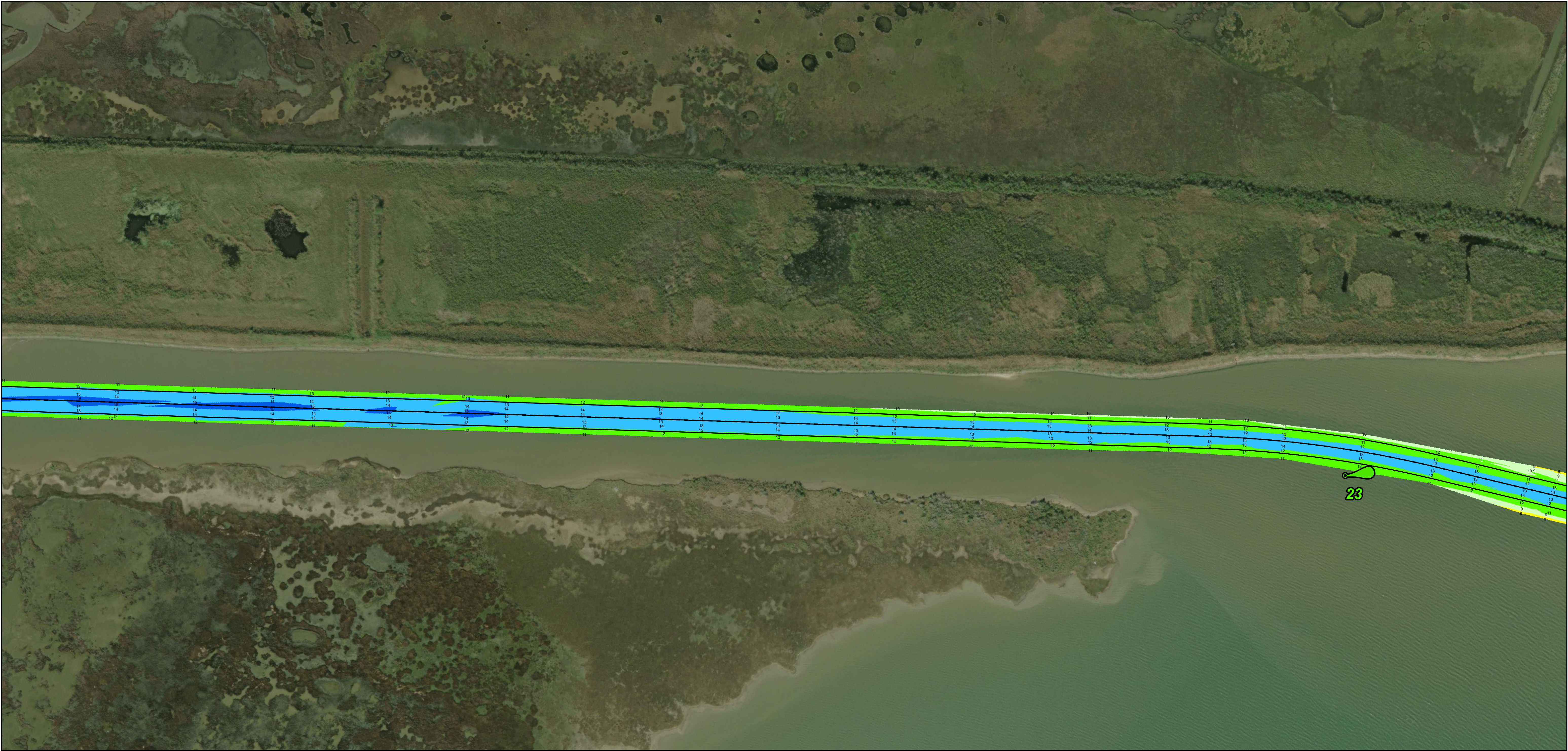
U.S. Army Corps of Engineers
Galveston District



Regional Extent



Dredging Reach Extent



Channel Features

- Channel Center Line
- Channel Toe
- Channel Station Lines
- Channel Dimensions

Aids to Navigation

- Green Side Aids
- Red Side Aids
- Lights

MLLW



NOTES:

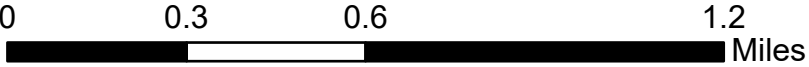
- Horizontal coordinates are referenced to Texas state plane coordinate system, south central zone nad83 us survey feet.
 - Elevations are referenced to mean lower low tide (MLLW) datum.
 - This project was designed by the Galveston District of the U.S. Army Corps of Engineers. The initials and signatures and registration designations of individuals appear on these project documents within the scope of their employment as required by 47 CFR 111.01-0112.
 - The information depicted on this survey map represents the results of surveys made on the dates indicated and can only be considered as indicating the general conditions existing at that time. These conditions are subject to rapid change due to shoaling events. A prudent mariner should not rely exclusively on the information provided here. Required by 33 CFR 209.325.
 - For the most up to date information please check our website at: <http://www.svg.usace.army.mil/Missions/Navigation/HydrographicSurveys/>
- Service Layer Credits: World Topographic Map: Brazoria County, Texas Parks & Wildlife, Esri, HERE, Garmin, INCREMENT P, USGS, METI/NASA, NGA, EPA, USDA
World Imagery: Maxar

Additional Combined Survey Dates and Stationing:

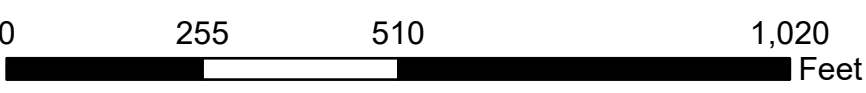
Combined survey dates 20230314_CS; 20230324_AD_1_563P000_564P000

Coordinate System: NAD 1983 StatePlane Texas South Central FIPS 4204 Feet
Projection: Lambert Conformal Conic

Dredging Reach Extent

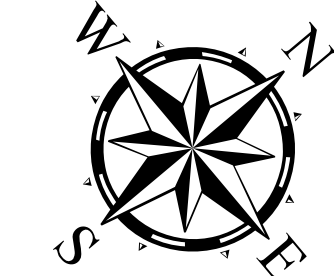


Hydrographic Survey Extent



HYDROGRAPHIC SURVEY

U.S. ARMY ENGINEER DISTRICT
CORPS OF ENGINEERS
GALVESTON, TEXAS
Station: 465+000 to 564+000
GIWW
Chocolate Bayou to Freeport Harbor



Latest Survey Collection Date: 24 March 2023

Document Page: 2 of 14

Website Index Number: 67

Scale:
1:3,000

Mapped by: M3AOXPAC

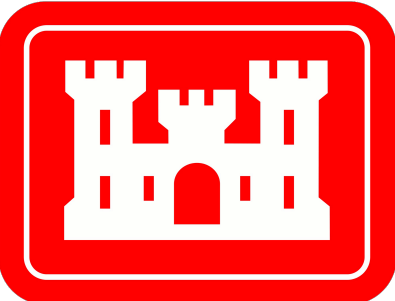
Additional Imagery info:

Authorized Depth: -13ft.

Side Slope Ratio: (Rise : Run)

PDF Print Date: 3/28/2023

Gulf Intracoastal Waterway: Chocolate Bayou to Freeport Harbor



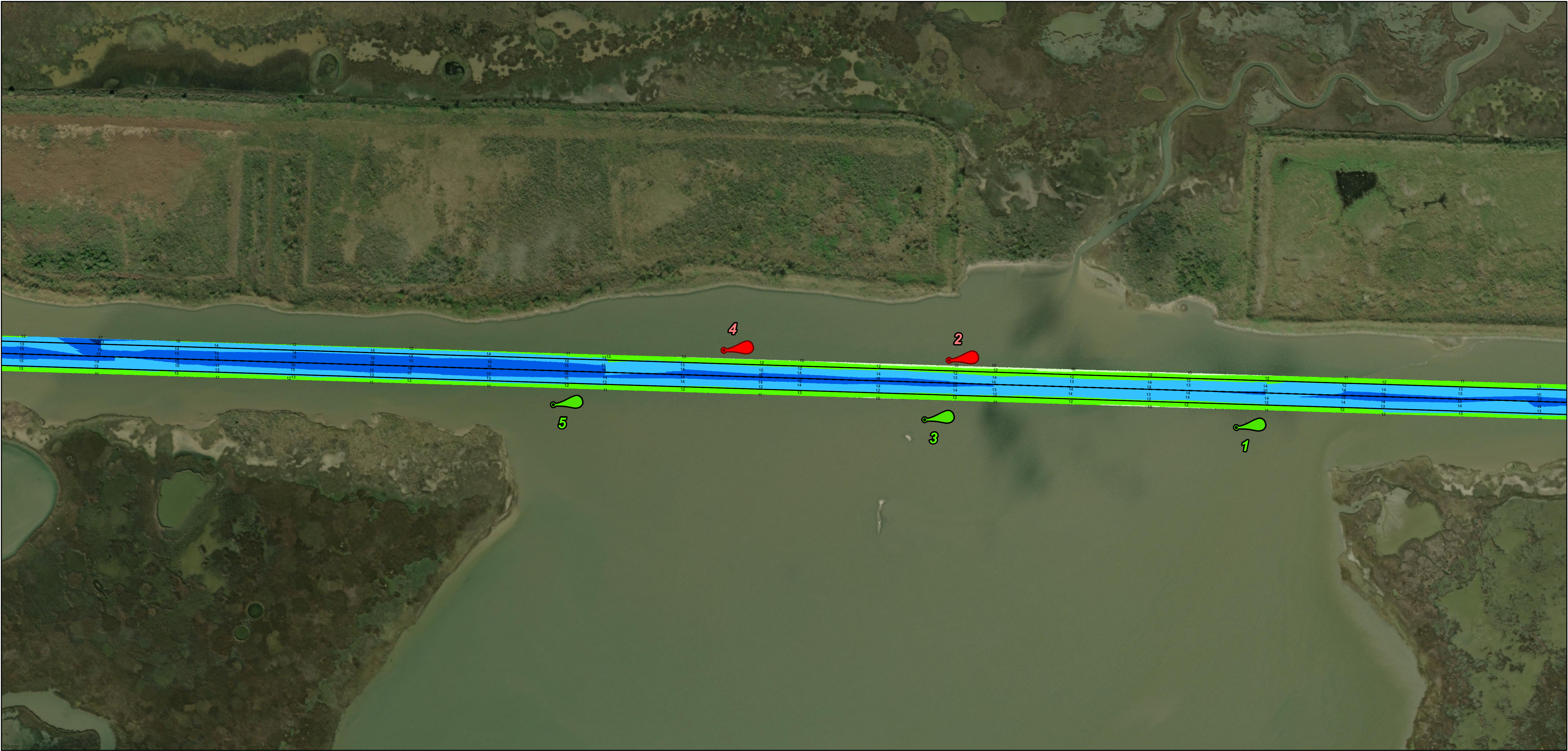
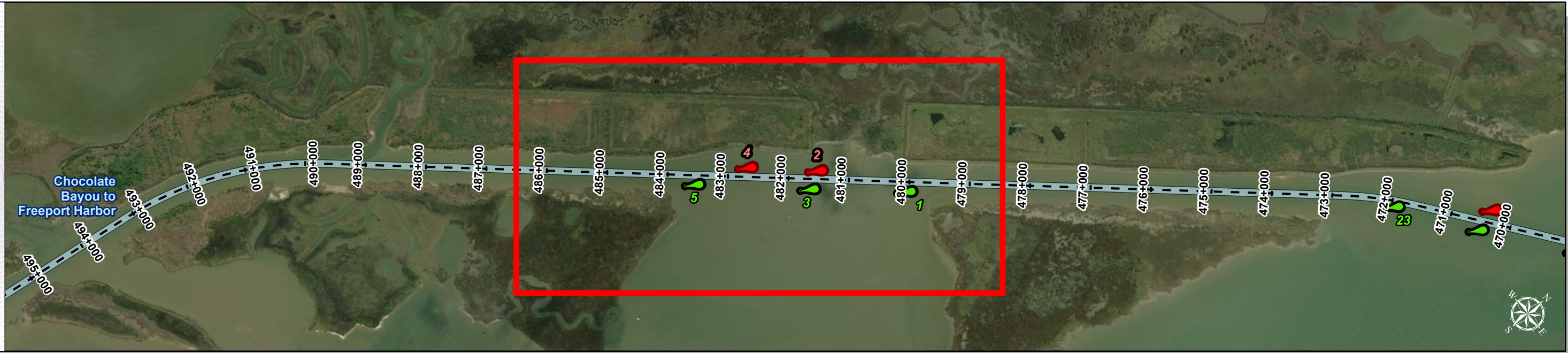
U.S. Army Corps of Engineers
Galveston District



Regional Extent



Dredging Reach Extent



Channel Features

- Channel Center Line
- Channel Toe
- Channel Station Lines
- Channel Dimensions

Aids to Navigation

- Green Side Aids
- Red Side Aids
- Lights

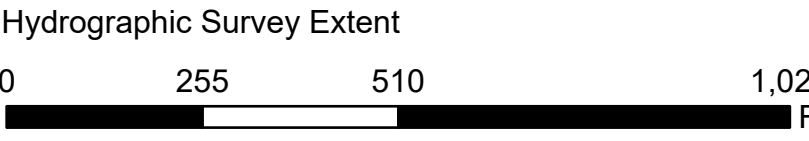
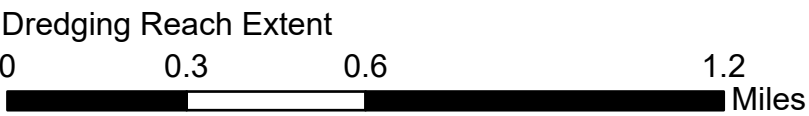
MLLW



NOTES:
1. Horizontal coordinates are referenced to Texas state plane coordinate system, south central zone nad83 us survey feet.
2. Elevations are referenced to mean lower low tide (MLLW) datum.
3. This project was designed by the Galveston District of the U.S. Army Corps of Engineers. The initials and signatures and registration designations of individuals appear on these project documents within the scope of their employment as required by 47 CFR 111.05-61152.
4. The information depicted on this survey map represents the results of surveys made on the dates indicated and can only be considered as indicating the general conditions existing at that time. These conditions are subject to rapid change due to shoaling events. A prudent mariner should not rely exclusively on the information provided here. Required by 33 CFR 209.325.
5. For the most up to date information please check our website at: <http://www.svg.usace.army.mil/Missions/Navigation/HydrographicSurveys/>
Service Layer Credits: World Topographic Map: Brazoria County, Texas Parks & Wildlife, Esri, HERE, Garmin, INCREMENT P, USGS, METI/NASA, NGA, EPA, USDA
World Imagery: Maxar

Additional Combined Survey Dates and Stationing:
Combined survey dates 20230314_CS; 20230324_AD_1_563P000_564P000

Coordinate System: NAD 1983 StatePlane Texas South Central FIPS 4204 Feet
Projection: Lambert Conformal Conic



HYDROGRAPHIC SURVEY

U.S. ARMY ENGINEER DISTRICT
CORPS OF ENGINEERS
GALVESTON, TEXAS
Station: 465+000 to 564+000
GIWW
Chocolate Bayou to Freeport Harbor

Latest Survey Collection Date: 24 March 2023

Document Page: 3 of 14
Website Index Number: 68

Scale: 1:3,000

Mapped by: M3AOXPAC

Additional Imagery info:

Authorized Depth: -13ft.

Side Slope Ratio: (Rise : Run)


PDF Print Date: 3/28/2023



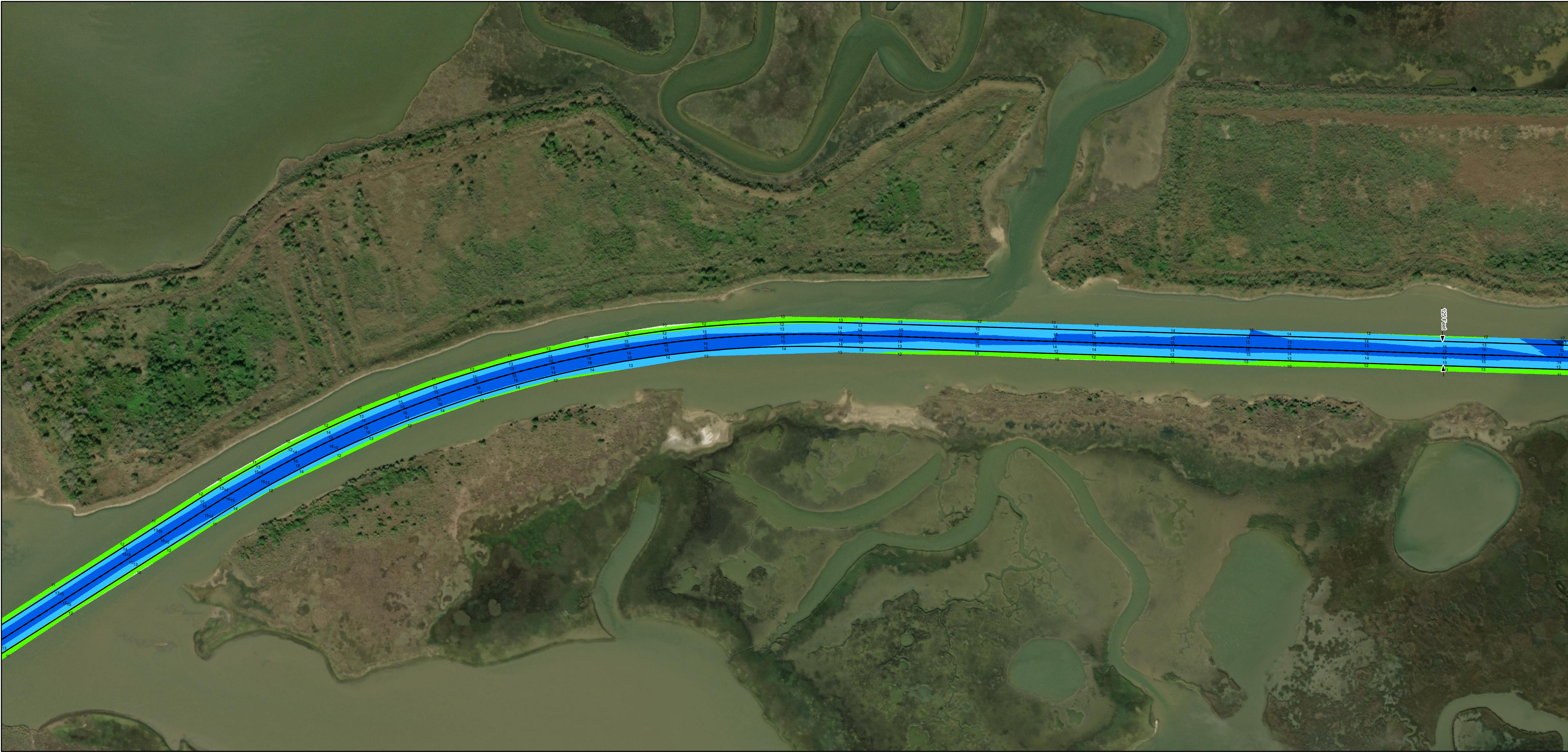
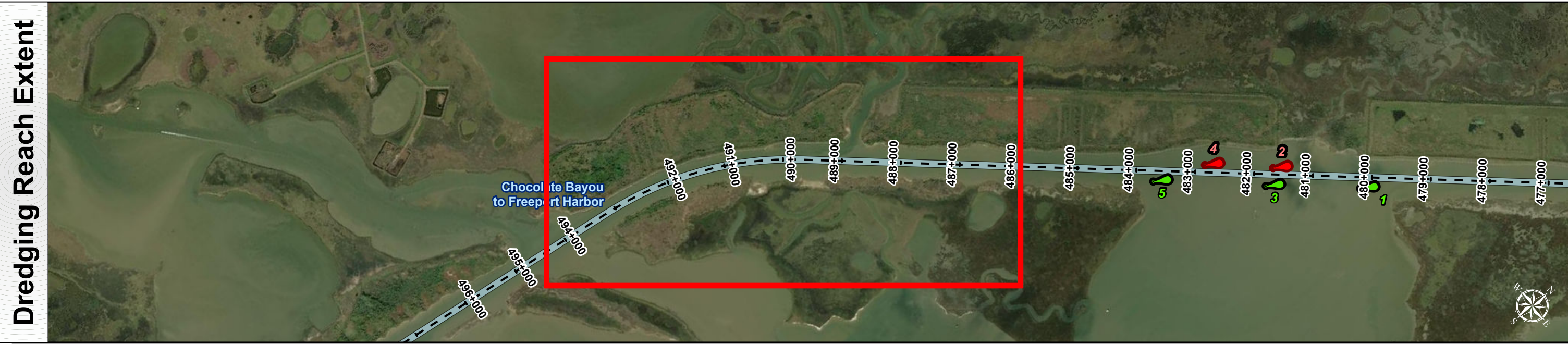
Gulf Intracoastal Waterway: Chocolate Bayou to Freeport Harbor



U.S. Army Corps of Engineers
Galveston District



TEXAS



Channel Features

- Channel Center Line
- Channel Toe
- Channel Station Lines
- Channel Dimensions

Aids to Navigation

- Green Side Aids
- Red Side Aids
- Lights

MLLW

0 - 3	3 - 5	5 - 7	7 - 9	9 - 11	11 - 13	13 - 15	15 - 17	< 17
Dark Red	Red	Orange	Yellow	Light Green	Green	Blue	Dark Blue	Black

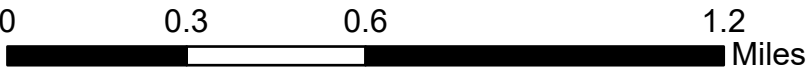
NOTES:
1. Horizontal coordinates are referenced to Texas state plane coordinate system, south central zone nad83 us survey feet.
2. Elevations are referenced to mean lower low tide (MLLW) datum.
3. This project was designed by the Galveston District of the U.S. Army Corps of Engineers. The initials and signatures and registration designations of individuals appear on these project documents within the scope of their employment as required by 47 CFR 111.115-111.117.
4. The information depicted on this survey map represents the results of surveys made on the dates indicated and can only be considered as indicating the general conditions existing at that time. These conditions are subject to rapid change due to shoaling events. A prudent mariner should not rely exclusively on the information provided here. Required by 33 CFR 209.325.
5. For the most up to date information please check our website at: <http://www.svg.usace.army.mil/Missions/Navigation/HydrographicSurveys/>

Service Layer Credits: World Topographic Map: Brazoria County, Texas Parks & Wildlife, Esri, HERE, Garmin, INCREMENT P, USGS, METI/NASA, NOAA, EPA, USDA
World Imagery: Maxar

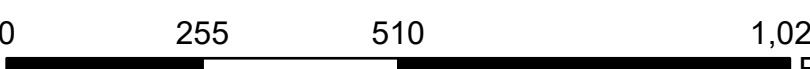
Additional Combined Survey Dates and Stationing:
Combined survey dates 20230314_CS; 20230324_AD_1_563P000_564P000

Coordinate System: NAD 1983 StatePlane Texas South Central FIPS 4204 Feet
Projection: Lambert Conformal Conic

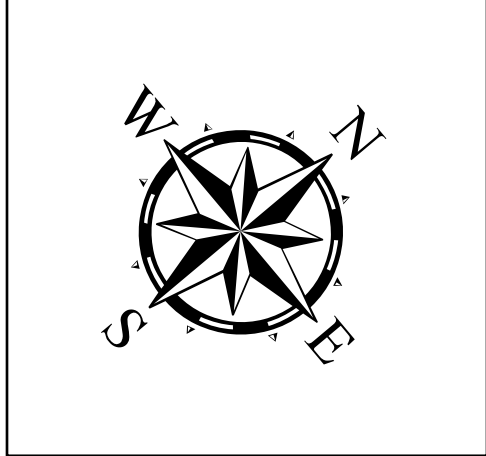
Dredging Reach Extent



Hydrographic Survey Extent



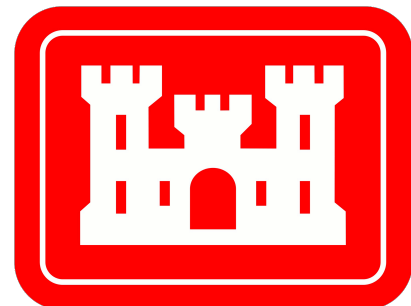
Latest Survey Collection Date: 24 March 2023		Authorized Depth: -13ft.	
Document Page: 4 of 14	Website Index Number: 69	Side Slope Ratio: (Rise : Run)	
Scale: 1:3,000		PDF Print Date: 3/28/2023	
Mapped by: M3AOXPAC			
Additional Imagery info:			



HYDROGRAPHIC SURVEY
U.S. ARMY ENGINEER DISTRICT
CORPS OF ENGINEERS
GALVESTON, TEXAS

Station: 465+000 to 564+000
GIWW
Chocolate Bayou to Freeport Harbor

Gulf Intracoastal Waterway: Chocolate Bayou to Freeport Harbor



U.S. Army Corps of Engineers
Galveston District



Regional Extent



Dredging Reach Extent



Channel Features

- Channel Center Line
- Channel Toe
- Channel Station Lines
- Channel Dimensions

Aids to Navigation

- Green Side Aids
- Red Side Aids
- Lights

MLLW



NOTES:

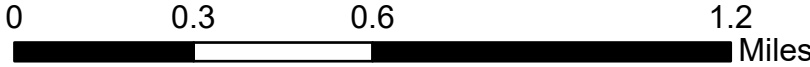
- Horizontal coordinates are referenced to Texas state plane coordinate system, south central zone nad83 us survey feet.
 - Elevations are referenced to mean lower low tide (MLLW) datum.
 - This project was designed by the Galveston District of the U.S. Army Corps of Engineers. The initials and signatures and registration designations of individuals appear on these project documents within the scope of their employment as required by 47 CFR 111.05-01152.
 - The information depicted on this survey map represents the results of surveys made on the dates indicated and can only be considered as indicating the general conditions existing at that time. These conditions are subject to rapid change due to shoaling events. A prudent mariner should not rely exclusively on the information provided here. Required by 33 CFR 200.325.
 - For the most up to date information please check our website at: <http://www.svg.usace.army.mil/Missions/Navigation/HydrographicSurveys/>
- Service Layer Credits: World Topographic Map: Brazoria County, Texas Parks & Wildlife, Esri, HERE, Garmin, INCREMENT P, USGS, METINASA, NGA, EPA, USDA
World Imagery: Maxar

Additional Combined Survey Dates and Stationing:

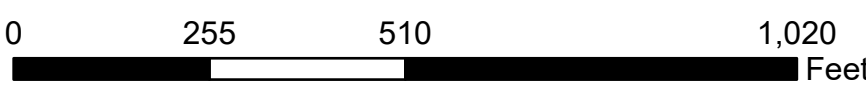
Combined survey dates 20230314_CS; 20230324_AD_1_563P000_564P000

Coordinate System: NAD 1983 StatePlane Texas South Central FIPS 4204 Feet
Projection: Lambert Conformal Conic

Dredging Reach Extent



Hydrographic Survey Extent

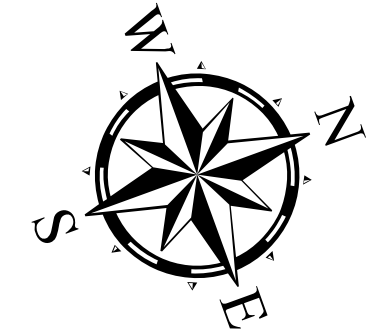


HYDROGRAPHIC SURVEY

U.S. ARMY ENGINEER DISTRICT
CORPS OF ENGINEERS
GALVESTON, TEXAS

Station: 465+000 to 564+000
GIWW

Chocolate Bayou to Freeport Harbor



Latest Survey Collection Date: 24 March 2023

Document Page: 5 of 14

Scale: 1:3,000

Mapped by: M3AOXPAC

Additional Imagery info:

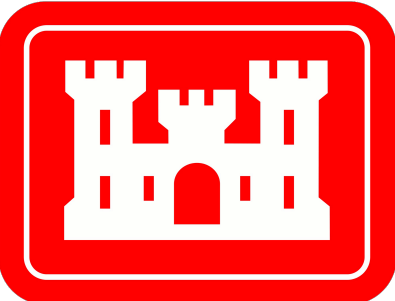
Authorized Depth: -13ft.

Side Slope Ratio: (Rise : Run)

PDF Print Date: 3/28/2023

Website Index Number: 70

Gulf Intracoastal Waterway: Chocolate Bayou to Freeport Harbor



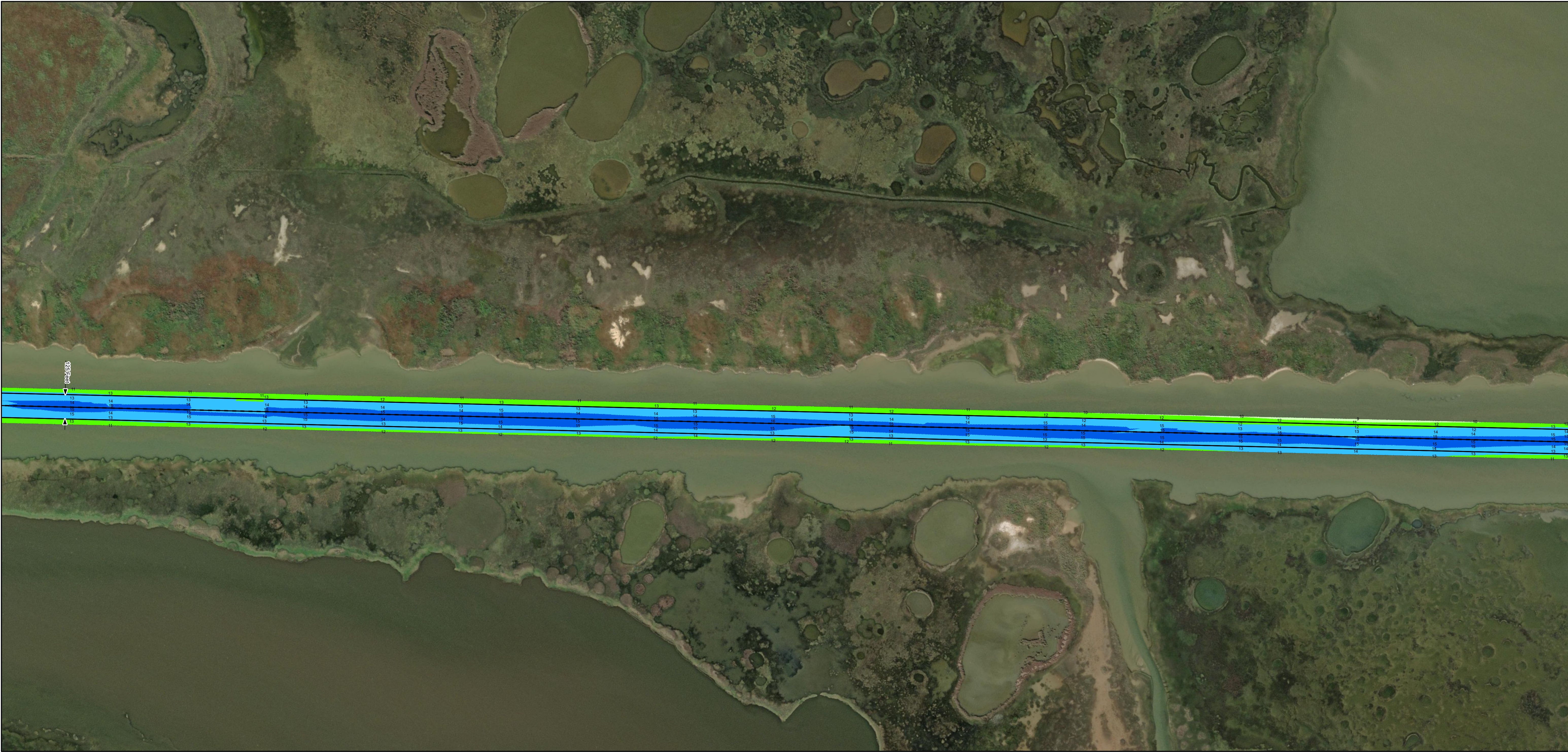
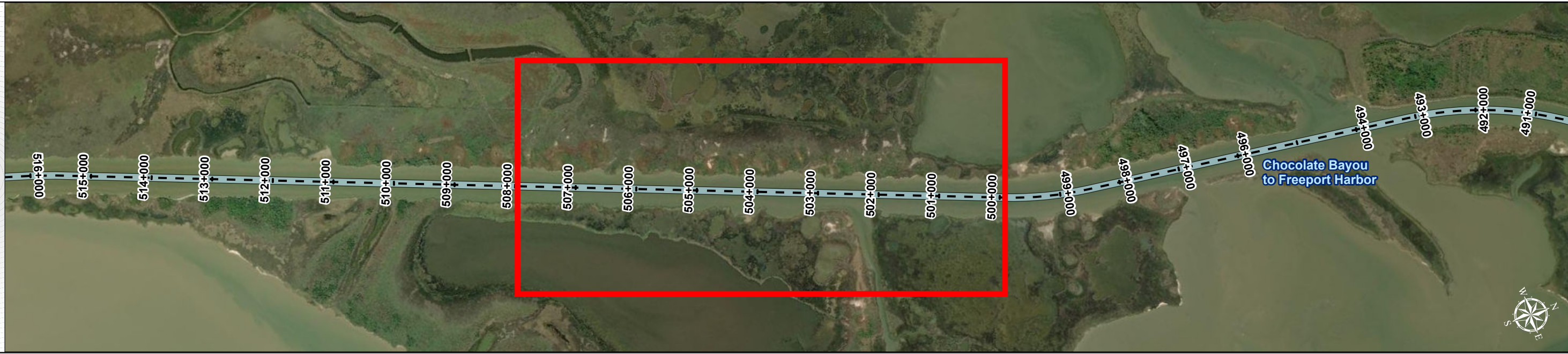
U.S. Army Corps of Engineers
Galveston District



Regional Extent



Dredging Reach Extent



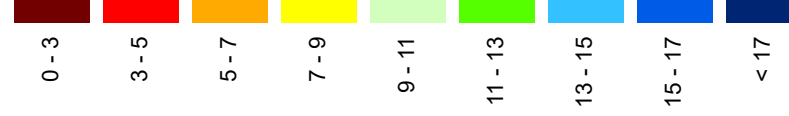
Channel Features

- Channel Center Line
- Channel Toe
- Channel Station Lines
- Channel Dimensions

Aids to Navigation

- Green Side Aids
- Red Side Aids
- Lights

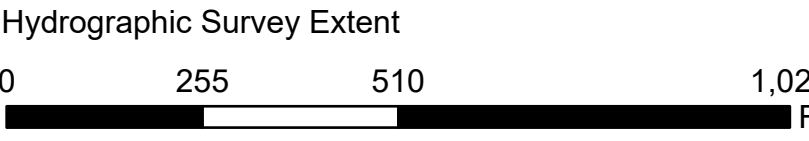
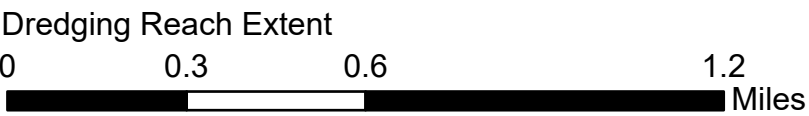
MLLW



NOTES:
1. Horizontal coordinates are referenced to Texas state plane coordinate system, south central zone nad83 us survey feet.
2. Elevations are referenced to mean lower low tide (MLLW) datum.
3. This project was designed by the Galveston District of the U.S. Army Corps of Engineers. The initials and signatures and registration designations of individuals appear on these project documents within the scope of their employment as required by 47 CFR 111.11-111.12.
4. The information depicted on this survey map represents the results of surveys made on the dates indicated and can only be considered as indicating the general conditions existing at that time. These conditions are subject to rapid change due to shoaling events. A prudent mariner should not rely exclusively on the information provided here. Required by 33 CFR 209.325.
5. For the most up to date information please check our website at: <http://www.svg.usace.army.mil/Missions/Navigation/HydrographicSurveys/>
Service Layer Credits: World Topographic Map: Brazoria County, Texas Parks & Wildlife, Esri, HERE, Garmin, INCREMENT P, USGS, METI/NASA, NOAA, EPA, USDA
World Imagery: Maxar

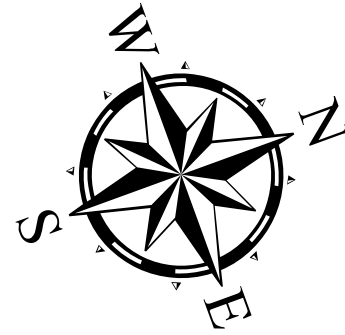
Additional Combined Survey Dates and Stationing:
Combined survey dates 20230314_CS; 20230324_AD_1_563P000_564P000

Coordinate System: NAD 1983 StatePlane Texas South Central FIPS 4204 Feet
Projection: Lambert Conformal Conic



HYDROGRAPHIC SURVEY

U.S. ARMY ENGINEER DISTRICT
CORPS OF ENGINEERS
GALVESTON, TEXAS
Station: 465+000 to 564+000
GIWW
Chocolate Bayou to Freeport Harbor



Latest Survey Collection Date: 24 March 2023

Document Page: 6 of 14

Website Index Number: 71

Authorized Depth: -13ft.

Side Slope Ratio: (Rise : Run)

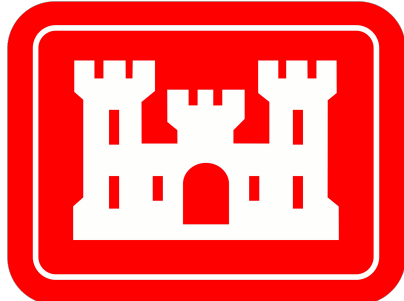
PDF Print Date: 3/28/2023

Scale: 1:3,000

Mapped by: M3AOXPAC

Additional Imagery info:

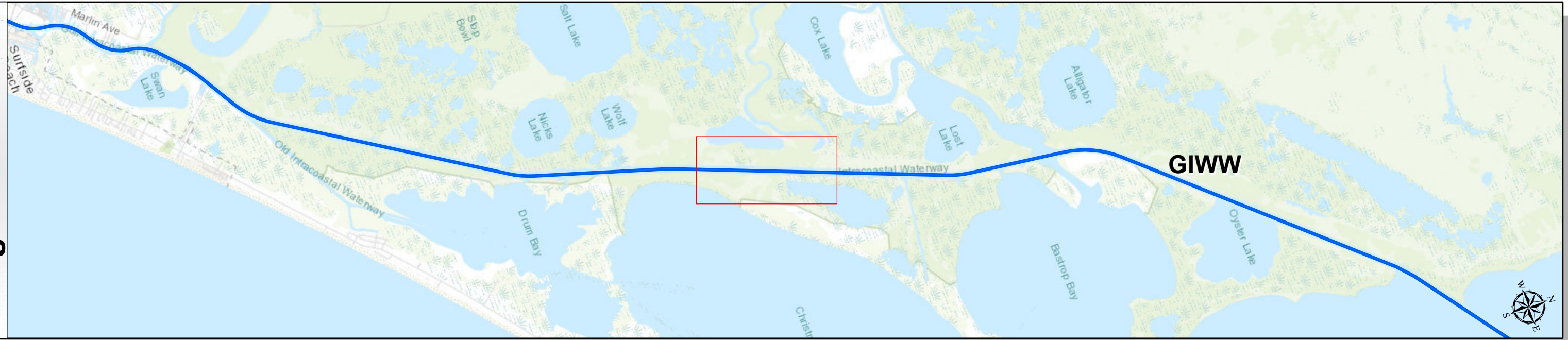
Gulf Intracoastal Waterway: Chocolate Bayou to Freeport Harbor



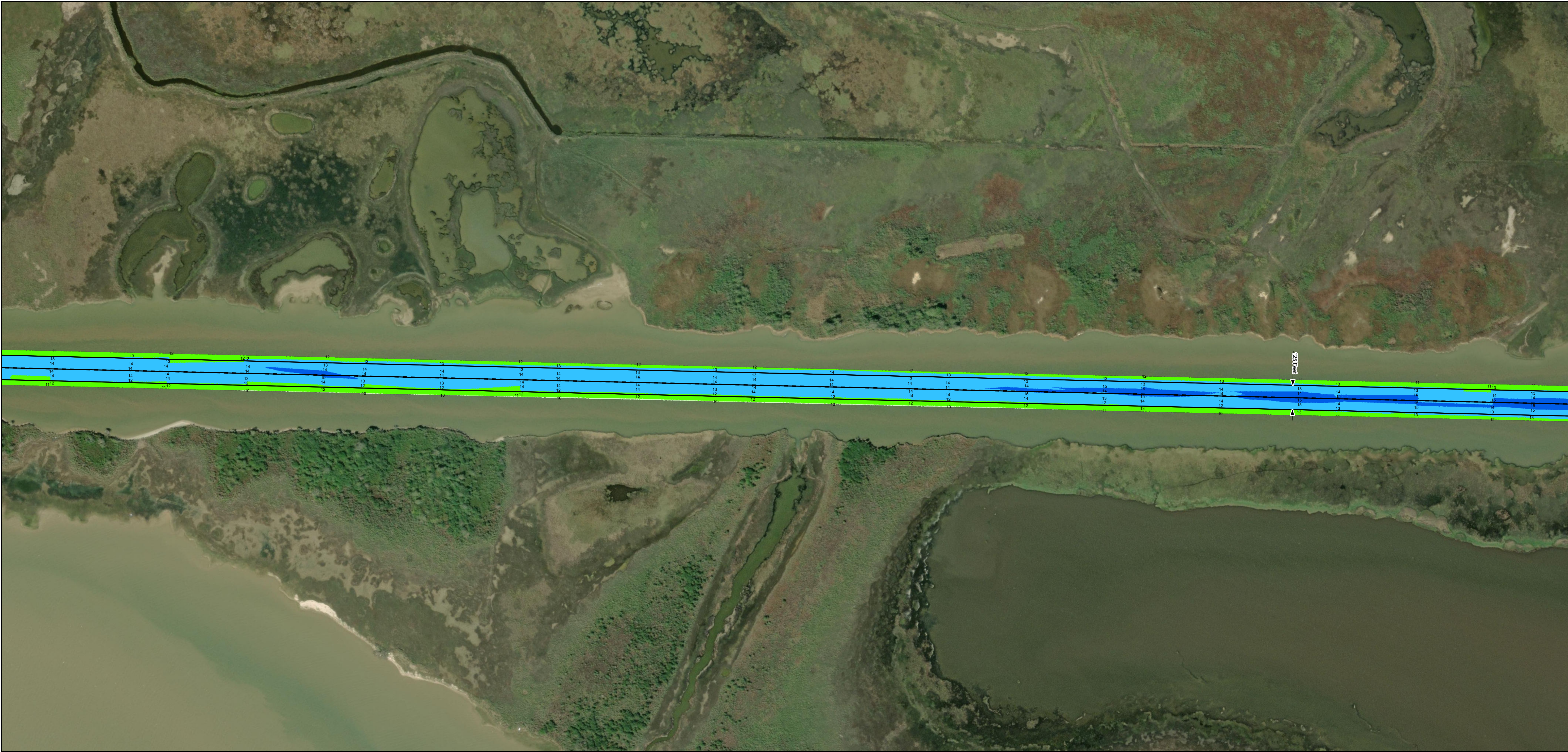
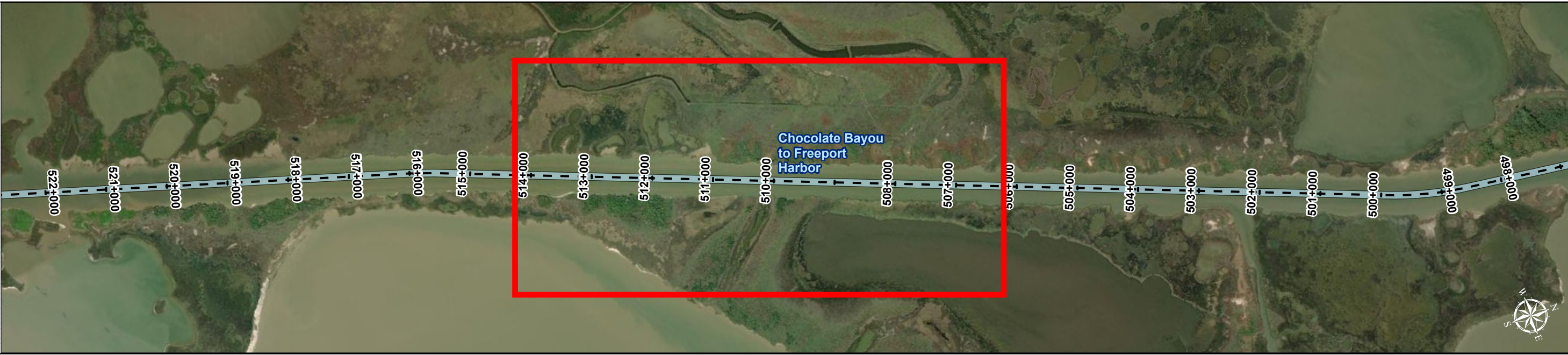
U.S. Army Corps of Engineers
Galveston District



Regional Extent



Dredging Reach Extent



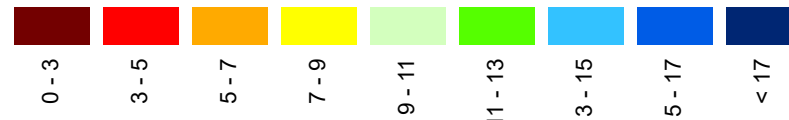
Channel Features

- Channel Center Line
- Channel Toe
- Channel Station Lines
- Channel Dimensions

Aids to Navigation

- Green Side Aids
- Red Side Aids
- Lights

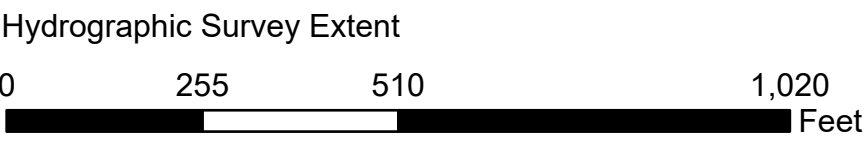
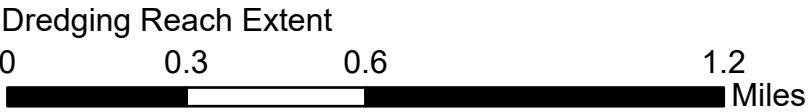
MLLW



NOTES:
1. Horizontal coordinates are referenced to Texas state plane coordinate system, south central zone nad83 us survey feet.
2. Elevations are referenced to mean lower low tide (MLLW) datum.
3. This project was designed by the galveston district of the u.s. army corps of engineers. The initials and signatures and registration designations of individuals appear on these project documents within the scope of their employment as required by er1110-1-6152.
4. The information depicted on this survey map represents the results of surveys made on the dates indicated and can only be considered as indicating the general conditions existing at that time. These conditions are subject to rapid change due to shoaling events. A prudent mariner should not rely exclusively on the information provided here. Required by 33 or 200.325
5. For the most up to date information please check our website at: <http://www.svg.usace.army.mil/Missions/Navigation/HydrographicSurveys/>
Service Layer Credits: World Topographic Map: Brazoria County, Texas Parks & Wildlife, Esri, HERE, Garmin, INCREMENT P, USGS, METI/NASA, NGA, EPA, USDA
World Imagery: Maxar

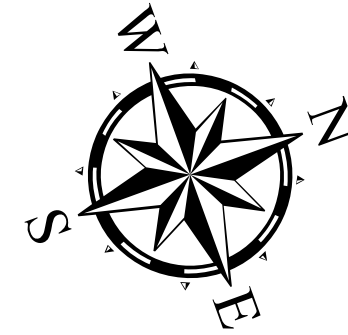
Additional Combined Survey Dates and Stationing:
Combined survey dates 20230314_CS; 20230324_AD_1_563P000_564P000

Coordinate System: NAD 1983 StatePlane Texas South Central FIPS 4204 Feet
Projection: Lambert Conformal Conic



HYDROGRAPHIC SURVEY

U.S. ARMY ENGINEER DISTRICT
CORPS OF ENGINEERS
GALVESTON, TEXAS
Station: 465+000 to 564+000
GIWW
Chocolate Bayou to Freeport Harbor



Latest Survey Collection Date: 24 March 2023

Document Page: 7 of 14

Scale: 1:3,000

Mapped by: M3AOXPAC

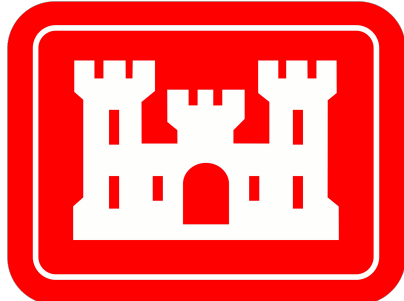
Additional Imagery info:

Authorized Depth: -13ft.

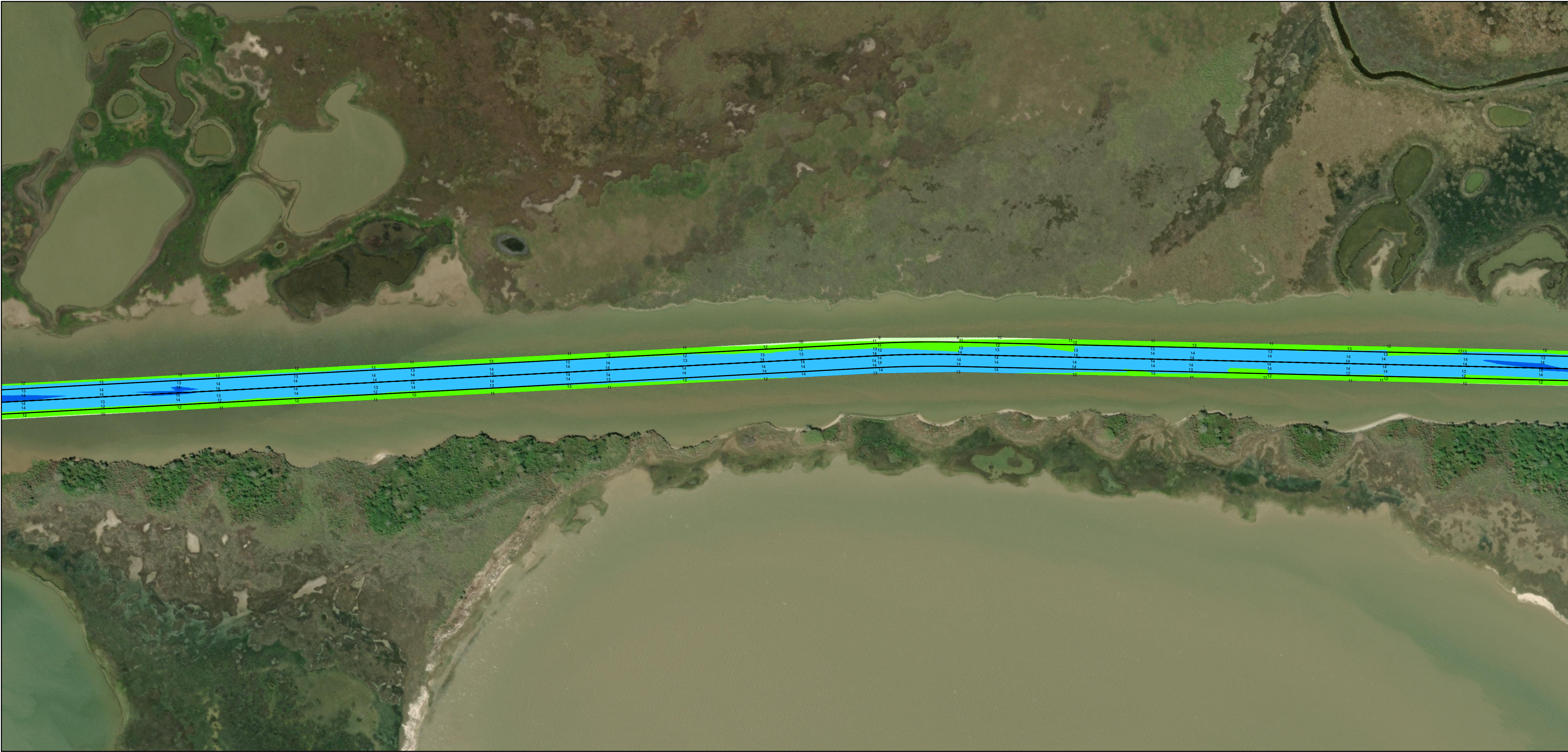
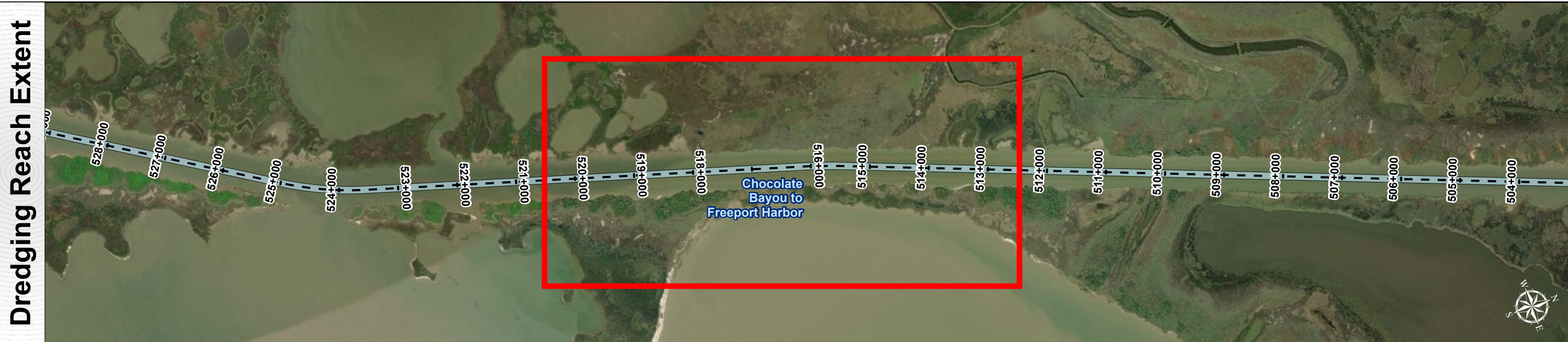
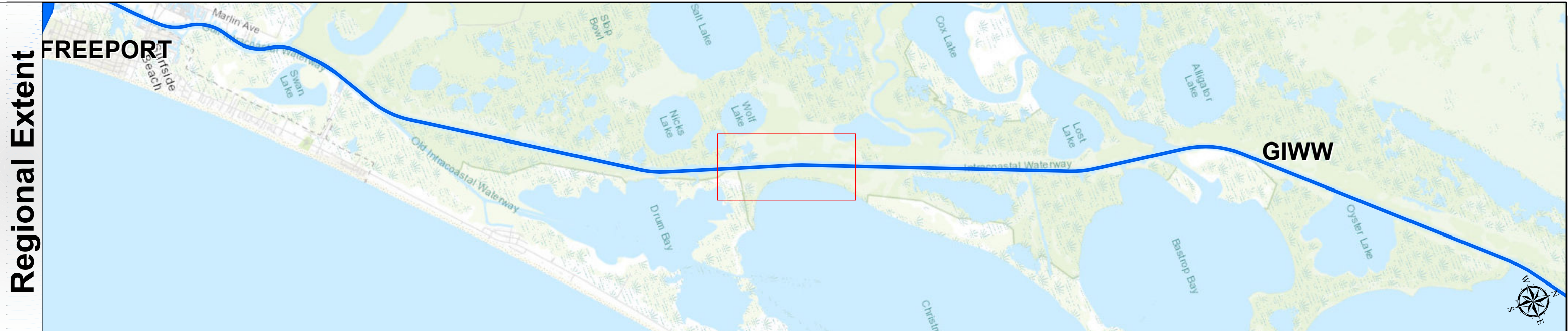
Side Slope Ratio: (Rise : Run)

PDF Print Date: 3/28/2023

Gulf Intracoastal Waterway: Chocolate Bayou to Freeport Harbor



U.S. Army Corps of Engineers
Galveston District



Channel Features

- Channel Center Line
- Channel Toe
- Channel Station Lines
- Channel Dimensions

Aids to Navigation

- Green Side Aids
- Red Side Aids
- Lights

MLLW

0 - 3	3 - 5	5 - 7	7 - 9	9 - 11	11 - 13	13 - 15	15 - 17	< 17
Red	Orange	Yellow	Light Green	Green	Dark Green	Blue	Dark Blue	Black

NOTES:
1. Horizontal coordinates are referenced to Texas state plane coordinate system, south central zone nad83 us survey feet.
2. Elevations are referenced to mean lower low tide (MLLW) datum.
3. This project was designed by the Galveston District of the U.S. Army Corps of Engineers. The initials and signatures and registration designations of individuals appear on these project documents within the scope of their employment as required by 47 CFR 111.05-61.152.
4. The information depicted on this survey map represents the results of surveys made on the dates indicated and can only be considered as indicating the general conditions existing at that time. These conditions are subject to rapid change due to shoaling events. A prudent mariner should not rely exclusively on the information provided here. Required by 33 CFR 209.325.
5. For the most up to date information please check our website at: <http://www.swg.usace.army.mil/Missions/Navigation/HydrographicSurveys/>
Service Layer Credits: World Topographic Map: Brazoria County, Texas Parks & Wildlife, Esri, HERE, Garmin, INCREMENT P, USGS, METINASA, NGA, EPA, USDA
World Imagery: Maxar

Additional Combined Survey Dates and Stationing:
Combined survey dates 20230314_CS; 20230324_AD_1_563P000_564P000

Coordinate System: NAD 1983 StatePlane Texas South Central FIPS 4204 Feet
Projection: Lambert Conformal Conic

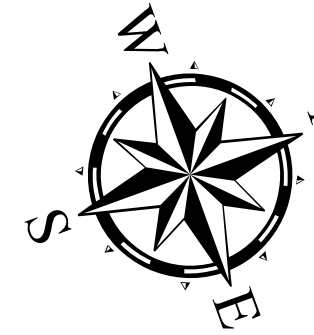
Dredging Reach Extent
0 0.3 0.6 1.2 Miles

Hydrographic Survey Extent
0 255 510 1,020 Feet

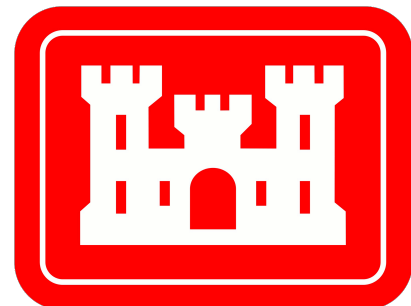
HYDROGRAPHIC SURVEY
U.S. ARMY ENGINEER DISTRICT
CORPS OF ENGINEERS
GALVESTON, TEXAS

Station: 465+000 to 564+000
GIWW
Chocolate Bayou to Freeport Harbor

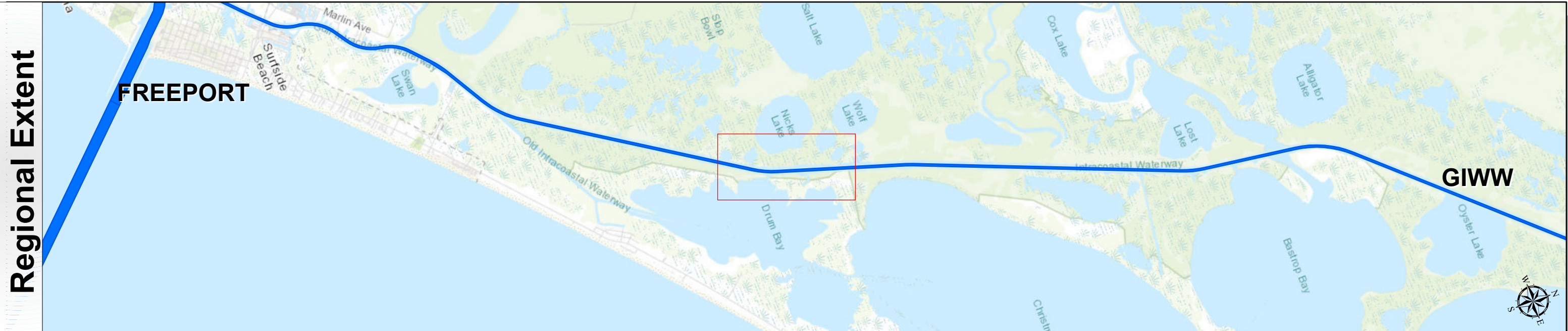
Latest Survey Collection Date: 24 March 2023		Authorized Depth: -13ft.
Document Page: 8 of 14	Website Index Number: 73	Side Slope Ratio: (Rise : Run)
Scale: 1:3,000		PDF Print Date: 3/28/2023
Mapped by: M3AOXPAC		
Additional Imagery info:		



Gulf Intracoastal Waterway: Chocolate Bayou to Freeport Harbor



U.S. Army Corps of Engineers
Galveston District



Channel Features

- Channel Center Line
- Channel Toe
- Channel Station Lines
- Channel Dimensions

Aids to Navigation

- Green Side Aids
- Red Side Aids
- Lights

MLLW

0 - 3	3 - 5	5 - 7	7 - 9	9 - 11	11 - 13	13 - 15	15 - 17	< 17
Dark Blue	Blue	Light Blue	Yellow	Orange	Red	Dark Red	Black	Black

NOTES:
1. Horizontal coordinates are referenced to Texas state plane coordinate system, south central zone nad83 us survey feet.
2. Elevations are referenced to mean lower low tide (MLLW) datum.
3. This project was designed by the Galveston District of the U.S. Army Corps of Engineers. The initials and signatures and registration designations of individuals appear on these project documents within the scope of their employment as required by 47 CFR 111.05-61152.
4. The information depicted on this survey map represents the results of surveys made on the dates indicated and can only be considered as indicating the general conditions existing at that time. These conditions are subject to rapid change due to shoaling events. A prudent mariner should not rely exclusively on the information provided here. Required by 33 CFR 209.325.
5. For the most up to date information please check our website at: <http://www.svg.usace.army.mil/Missions/Navigation/HydrographicSurveys/>
Service Layer Credits: World Topographic Map: Brazoria County, Texas Parks & Wildlife, Esri, HERE, Garmin, INCREMENT P, USGS, METINASA, NGA, EPA, USDA
World Imagery: Maxar

Additional Combined Survey Dates and Stationing:
Combined survey dates 20230314_CS; 20230324_AD_1_563P000_564P000

Coordinate System: NAD 1983 StatePlane Texas South Central FIPS 4204 Feet
Projection: Lambert Conformal Conic

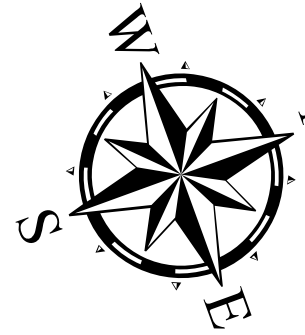
Dredging Reach Extent

0 0.3 0.6 1.2 Miles

Hydrographic Survey Extent

0 255 510 1,020 Feet

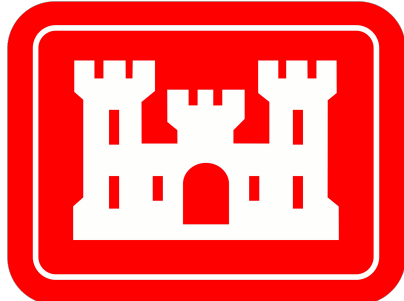
Latest Survey Collection Date: 24 March 2023		Authorized Depth: -13ft.	
Document Page: 9 of 14	Website Index Number: 74	Side Slope Ratio: (Rise : Run)	
Scale: 1:3,000		PDF Print Date: 3/28/2023	
Mapped by: M3AOXPAC			
Additional Imagery info:			



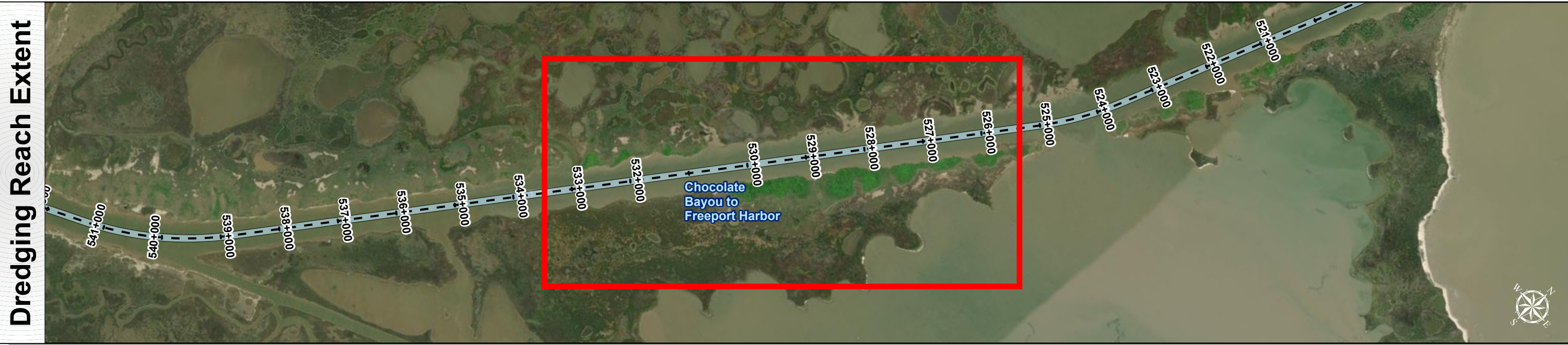
HYDROGRAPHIC SURVEY
U.S. ARMY ENGINEER DISTRICT
CORPS OF ENGINEERS
GALVESTON, TEXAS

Station: 465+000 to 564+000
GIWW
Chocolate Bayou to Freeport Harbor

Gulf Intracoastal Waterway: Chocolate Bayou to Freeport Harbor



U.S. Army Corps of Engineers
Galveston District



Channel Features

- Channel Center Line
- Channel Toe
- Channel Station Lines
- Channel Dimensions

Aids to Navigation

- Green Side Aids
- Red Side Aids
- Lights

MLLW

0 - 3	3 - 5	5 - 7	7 - 9	9 - 11	11 - 13	13 - 15	15 - 17	< 17
Red	Orange	Yellow	Light Green	Green	Dark Green	Blue	Dark Blue	Black

NOTES:

- Horizontal coordinates are referenced to Texas state plane coordinate system, south central zone nad83 us survey feet.
- Elevations are referenced to mean lower low tide (MLLW) datum.
- This project was designed by the Galveston District of the U.S. Army Corps of Engineers. The initials and signatures and registration designations of individuals appear on these project documents within the scope of their employment as required by 47 CFR 111.11-111.12.
- The information depicted on this survey map represents the results of surveys made on the dates indicated and can only be considered as indicating the general conditions existing at that time. These conditions are subject to rapid change due to shoaling events. A prudent mariner should not rely exclusively on the information provided here. Required by 33 CFR 200.325
- For the most up to date information please check our website at: <http://www.svg.usace.army.mil/Missions/Navigation/HydrographicSurveys/>

Service Layer Credits: World Topographic Map: Brazoria County, Texas Parks & Wildlife, Esri, HERE, Garmin, INCREMENT P, USGS, METI/NASA, NGA, EPA, USDA
World Imagery: Maxar

Additional Combined Survey Dates and Stationing:

Combined survey dates 20230314_CS; 20230324_AD_1_563P000_564P000

Coordinate System: NAD 1983 StatePlane Texas South Central FIPS 4204 Feet
Projection: Lambert Conformal Conic

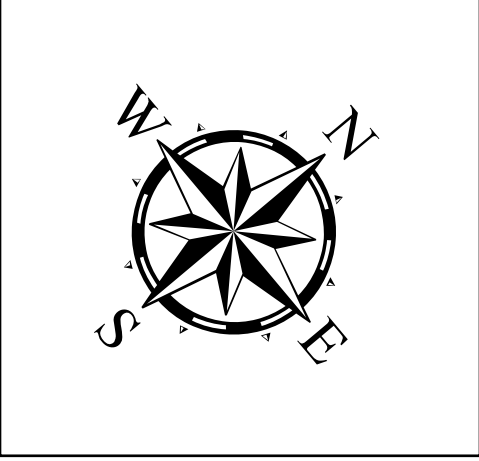
Dredging Reach Extent

0 0.3 0.6 1.2 Miles

Hydrographic Survey Extent

0 255 510 1,020 Feet

Latest Survey Collection Date: 24 March 2023		Authorized Depth: -13ft.	
Document Page: 10 of 14	Website Index Number: 75	Side Slope Ratio: (Rise : Run)	
Scale: 1:3,000		PDF Print Date: 3/28/2023	
Mapped by: M3AOXPAC			
Additional Imagery info:			

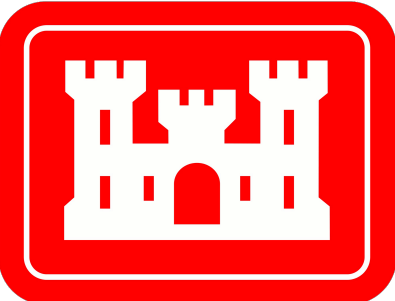


HYDROGRAPHIC SURVEY

U.S. ARMY ENGINEER DISTRICT
CORPS OF ENGINEERS
GALVESTON, TEXAS

Station: 465+000 to 564+000
GIWW
Chocolate Bayou to Freeport Harbor

Gulf Intracoastal Waterway: Chocolate Bayou to Freeport Harbor



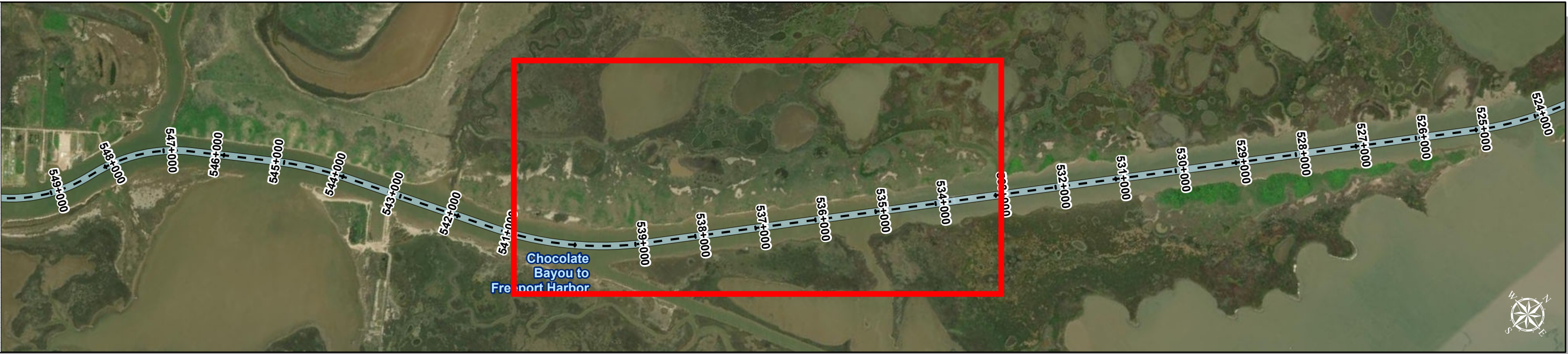
U.S. Army Corps of Engineers
Galveston District



Regional Extent



Dredging Reach Extent



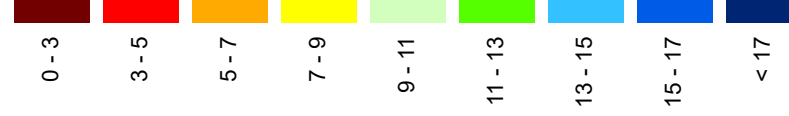
Channel Features

- Channel Center Line
- Channel Toe
- Channel Station Lines
- Channel Dimensions

Aids to Navigation

- Green Side Aids
- Red Side Aids
- Lights

MLLW



NOTES:

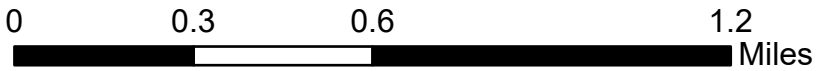
- Horizontal coordinates are referenced to Texas state plane coordinate system, south central zone nad83 us survey feet.
 - Elevations are referenced to mean lower low tide (MLLW) datum.
 - This project was designed by the Galveston District of the U.S. Army Corps of Engineers. The initials and signatures and registration designations of individuals appear on these project documents within the scope of their employment as required by 47 CFR 111.101-111.102.
 - The information depicted on this survey map represents the results of surveys made on the dates indicated and can only be considered as indicating the general conditions existing at that time. These conditions are subject to rapid change due to shoaling events. A prudent mariner should not rely exclusively on the information provided here. Required by 33 CFR 200.325.
 - For the most up to date information please check our website at: <http://www.svg.usace.army.mil/Missions/Navigation/HydrographicSurveys/>
- Service Layer Credits: World Topographic Map: Brazoria County, Texas Parks & Wildlife, Esri, HERE, Garmin, INCREMENT P, USGS, METI/NASA, NGA, EPA, USDA
World Imagery: Maxar

Additional Combined Survey Dates and Stationing:

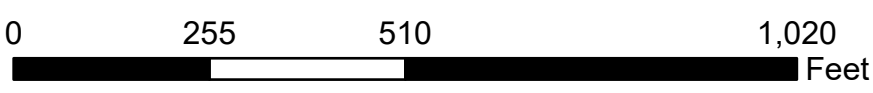
Combined survey dates 20230314_CS; 20230324_AD_1_563P000_564P000

Coordinate System: NAD 1983 StatePlane Texas South Central FIPS 4204 Feet
Projection: Lambert Conformal Conic

Dredging Reach Extent



Hydrographic Survey Extent



HYDROGRAPHIC SURVEY

U.S. ARMY ENGINEER DISTRICT
CORPS OF ENGINEERS
GALVESTON, TEXAS

Station: 465+000 to 564+000
GIWW

Chocolate Bayou to Freeport Harbor



Latest Survey Collection Date: 24 March 2023

Document Page: 11 of 14

Website Index Number: 76

Scale: 1:3,000

Mapped by: M3AOXPAC

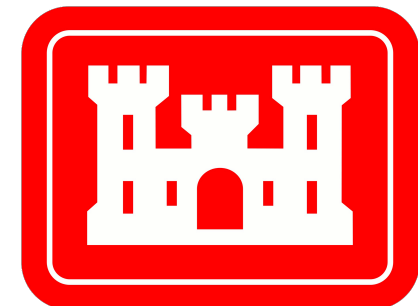
Additional Imagery info:

Authorized Depth: -13ft.

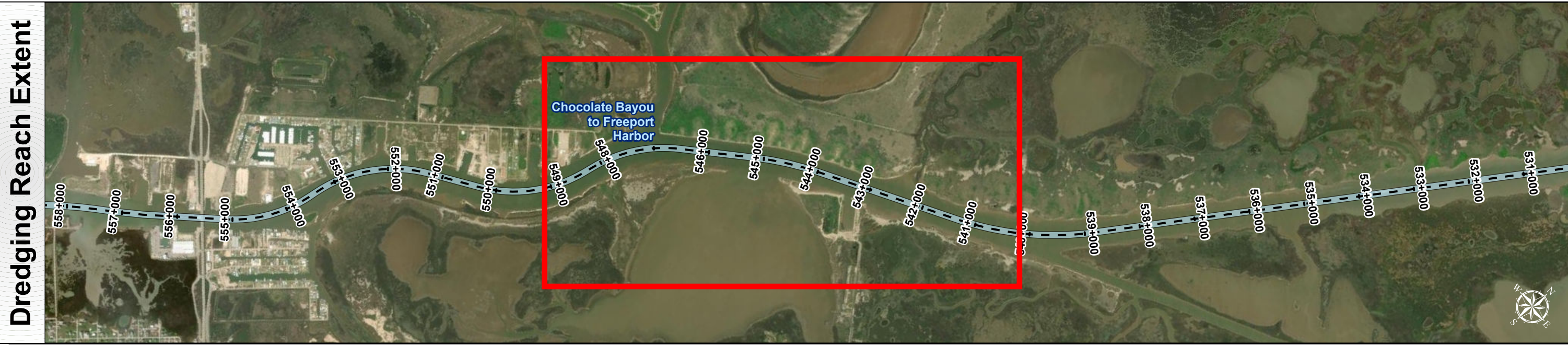
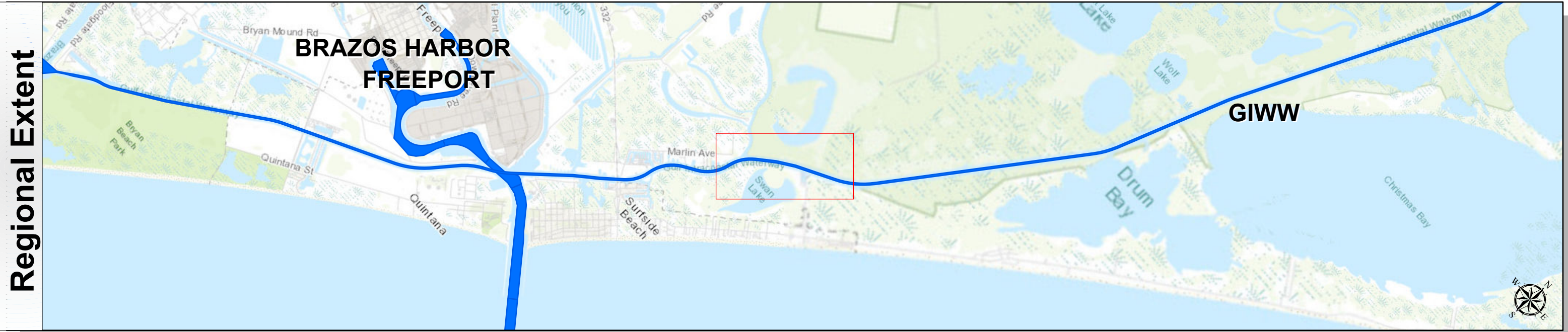
Side Slope Ratio: (Rise : Run)

PDF Print Date: 3/28/2023

Gulf Intracoastal Waterway: Chocolate Bayou to Freeport Harbor



U.S. Army Corps of Engineers
Galveston District



Channel Features

- Channel Center Line
- Channel Toe
- Channel Station Lines
- Channel Dimensions

Aids to Navigation

- Green Side Aids
- Red Side Aids
- Lights

MLLW

0 - 3	3 - 5	5 - 7	7 - 9	9 - 11	11 - 13	13 - 15	15 - 17	< 17

NOTES:
1. Horizontal coordinates are referenced to Texas state plane coordinate system, south central zone nad83 us survey feet.
2. Elevations are referenced to mean lower low tide (MLLW) datum.
3. This project was designed by the Galveston District of the U.S. Army Corps of Engineers. The initials and signatures and registration designations of individuals appear on these project documents within the scope of their employment as required by 47 CFR 111.115-111.122.
4. The information depicted on this survey map represents the results of surveys made on the dates indicated and can only be considered as indicating the general conditions existing at that time. These conditions are subject to rapid change due to shoaling events. A prudent mariner should not rely exclusively on the information provided here. Required by 33 CFR 209.325.
5. For the most up to date information please check our website at: <http://www.svg.usace.army.mil/Missions/Navigation/HydrographicSurveys/>
Service Layer Credits: World Topographic Map: Brazoria County, Texas Parks & Wildlife, Esri, HERE, Garmin, INCREMENT P, USGS, METI/NASA, NGA, EPA, USDA
World Imagery: Maxar

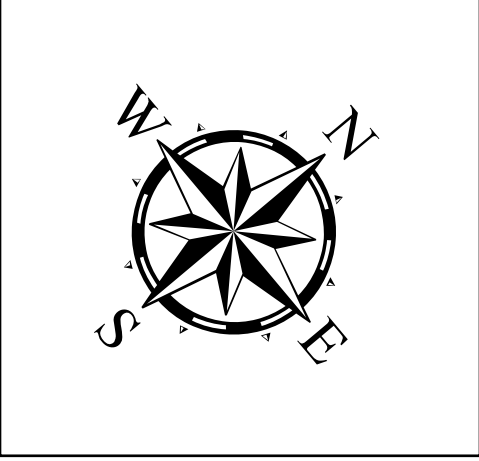
Additional Combined Survey Dates and Stationing:
Combined survey dates 20230314_CS; 20230324_AD_1_563P000_564P000

Coordinate System: NAD 1983 StatePlane Texas South Central FIPS 4204 Feet
Projection: Lambert Conformal Conic

Dredging Reach Extent
0 0.33 0.65 1.3 Miles

Hydrographic Survey Extent
0 275 550 1,100 Feet

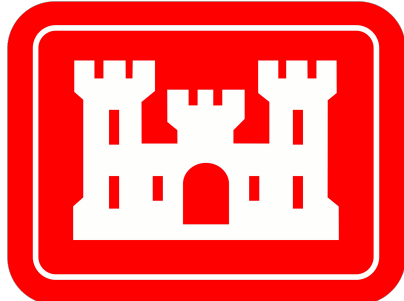
Latest Survey Collection Date: 24 March 2023		Authorized Depth: -13ft.	
Document Page: 12 of 14	Website Index Number: 77	Side Slope Ratio: (Rise : Run)	
Scale: 1:3,200		PDF Print Date: 3/28/2023	
Mapped by: M3AOXPAC			
Additional Imagery info:			



HYDROGRAPHIC SURVEY
U.S. ARMY ENGINEER DISTRICT
CORPS OF ENGINEERS
GALVESTON, TEXAS

Station: 465+000 to 564+000
GIWW
Chocolate Bayou to Freeport Harbor

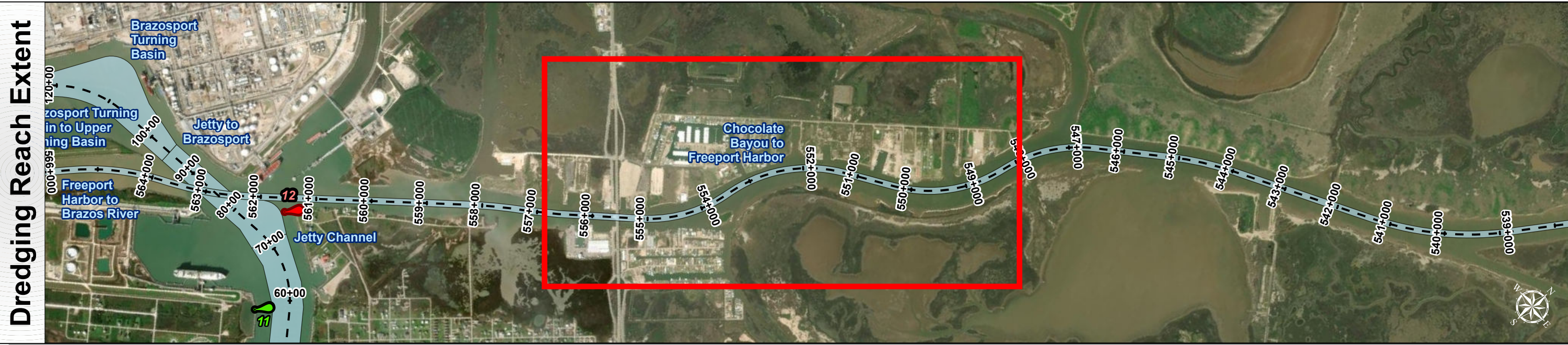
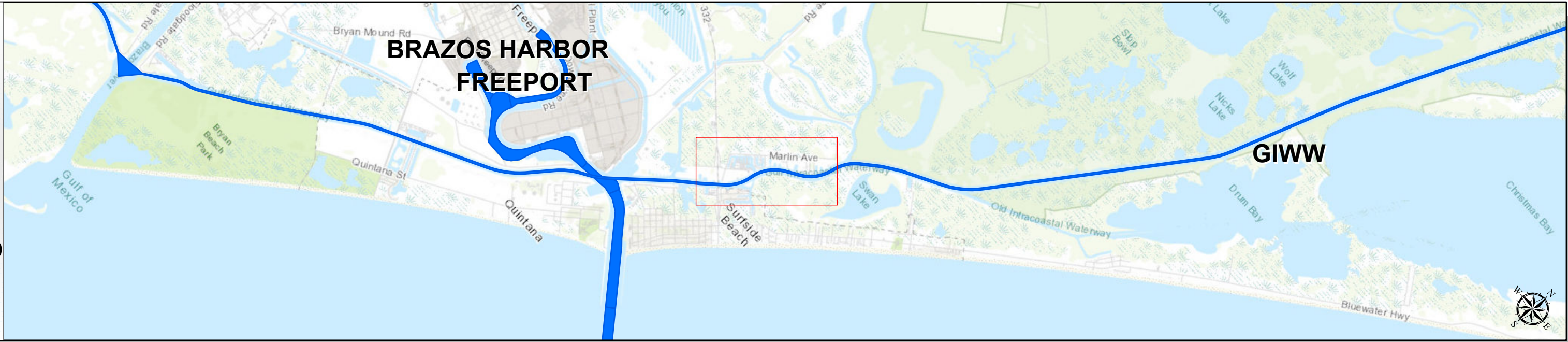
Gulf Intracoastal Waterway: Chocolate Bayou to Freeport Harbor



U.S. Army Corps of Engineers
Galveston District



Regional Extent



Channel Features

- Channel Center Line
- Channel Toe
- Channel Station Lines
- Channel Dimensions

Aids to Navigation

- Green Side Aids
- Red Side Aids
- Lights

MLLW

0 - 3	3 - 5	5 - 7	7 - 9	9 - 11	11 - 13	13 - 15	15 - 17	< 17
Dark Red	Red	Orange	Yellow	Light Green	Green	Light Blue	Blue	Dark Blue

NOTES:

- Horizontal coordinates are referenced to Texas state plane coordinate system, south central zone nad83 us survey feet.
- Elevations are referenced to mean lower low tide (MLLW) datum.
- This project was designed by the Galveston District of the U.S. Army Corps of Engineers. The initials and signatures and registration designations of individuals appear on these project documents within the scope of their employment as required by 47 CFR 111.1-111.12.
- The information depicted on this survey map represents the results of surveys made on the dates indicated and can only be considered as indicating the general conditions existing at that time. These conditions are subject to rapid change due to shoaling events. A prudent mariner should not rely exclusively on the information provided here. Required by 33 CFR 209.325.
- For the most up to date information please check our website at: <http://www.svg.usace.army.mil/Missions/Navigation/HydrographicSurveys/>

Service Layer Credits: World Topographic Map: Brazoria County, Texas Parks & Wildlife, Esri, HERE, Garmin, INCREMENT P, USGS, METI/NASA, NGA, EPA, USDA
World Imagery: Maxar

Additional Combined Survey Dates and Stationing:

Combined survey dates 20230314_CS; 20230324_AD_1_563P000_564P000

Coordinate System: NAD 1983 StatePlane Texas South Central FIPS 4204 Feet
Projection: Lambert Conformal Conic

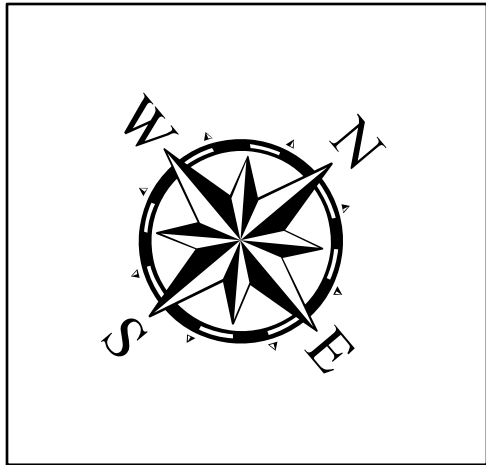
Dredging Reach Extent

0 0.33 0.65 1.3 Miles

Hydrographic Survey Extent

0 275 550 1,100 Feet

Latest Survey Collection Date: 24 March 2023		Authorized Depth: -13ft.	
Document Page: 13 of 14	Website Index Number: 78	Side Slope Ratio: (Rise : Run)	
Scale: 1"=3,200'		PDF Print Date: 3/28/2023	
Mapped by: M3AOXPAC			
Additional Imagery info:			



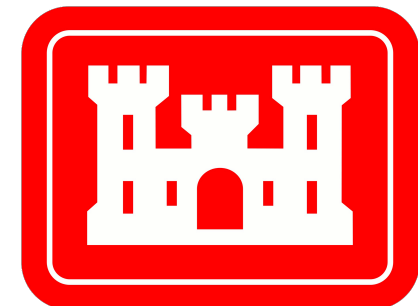
HYDROGRAPHIC SURVEY

U.S. ARMY ENGINEER DISTRICT
CORPS OF ENGINEERS
GALVESTON, TEXAS

Station: 465+000 to 564+000

GIWW
Chocolate Bayou to Freeport Harbor

Gulf Intracoastal Waterway: Chocolate Bayou to Freeport Harbor



U.S. Army Corps of Engineers
Galveston District



Regional Extent



Dredging Reach Extent



Channel Features

- Channel Center Line
- Channel Toe
- Channel Station Lines
- Channel Dimensions

Aids to Navigation

- Green Side Aids
- Red Side Aids
- Lights

MLLW



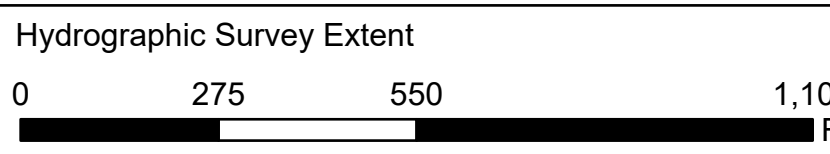
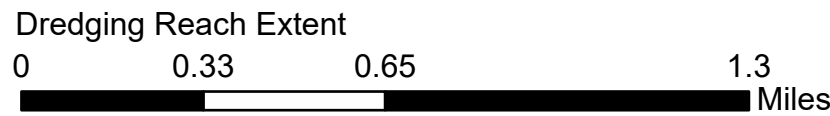
NOTES:

- Horizontal coordinates are referenced to Texas state plane coordinate system, south central zone nad83 us survey feet.
 - Elevations are referenced to mean lower low tide (MLLW) datum.
 - This project was designed by the Galveston District of the U.S. Army Corps of Engineers. The initials and signatures and registration designations of individuals appear on these project documents within the scope of their employment as required by 47 CFR 111.01-0112.
 - The information depicted on this survey map represents the results of surveys made on the dates indicated and can only be considered as indicating the general conditions existing at that time. These conditions are subject to rapid change due to shoaling events. A prudent mariner should not rely exclusively on the information provided here. Required by 33 CFR 209.325.
 - For the most up to date information please check our website at: <http://www.svg.usace.army.mil/Missions/Navigation/HydrographicSurveys/>
- Service Layer Credits: World Topographic Map: Brazoria County, Texas Parks & Wildlife, Esri, HERE, Garmin, INCREMENT P, USGS, METI/NASA, NOAA, EPA, USDA, World Imagery: Maxar

Additional Combined Survey Dates and Stationing:

Combined survey dates 20230314_CS; 20230324_AD_1_563P000_564P000

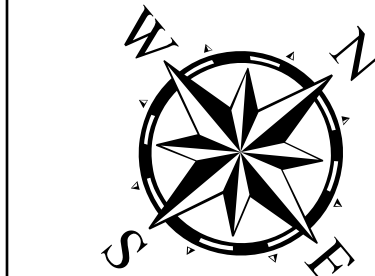
Coordinate System: NAD 1983 StatePlane Texas South Central FIPS 4204 Feet
Projection: Lambert Conformal Conic



HYDROGRAPHIC SURVEY

U.S. ARMY ENGINEER DISTRICT
CORPS OF ENGINEERS
GALVESTON, TEXAS

Station: 465+000 to 564+000
GIWW
Chocolate Bayou to Freeport Harbor



Latest Survey Collection Date: 24 March 2023

Document Page: 14 of 14

Website Index Number: 79

Scale: 1:3,200

Authorized Depth: -13ft.

Side Slope Ratio: (Rise : Run)

PDF Print Date: 3/28/2023

Mapped by: M3AOXPAC

Additional Imagery info: