

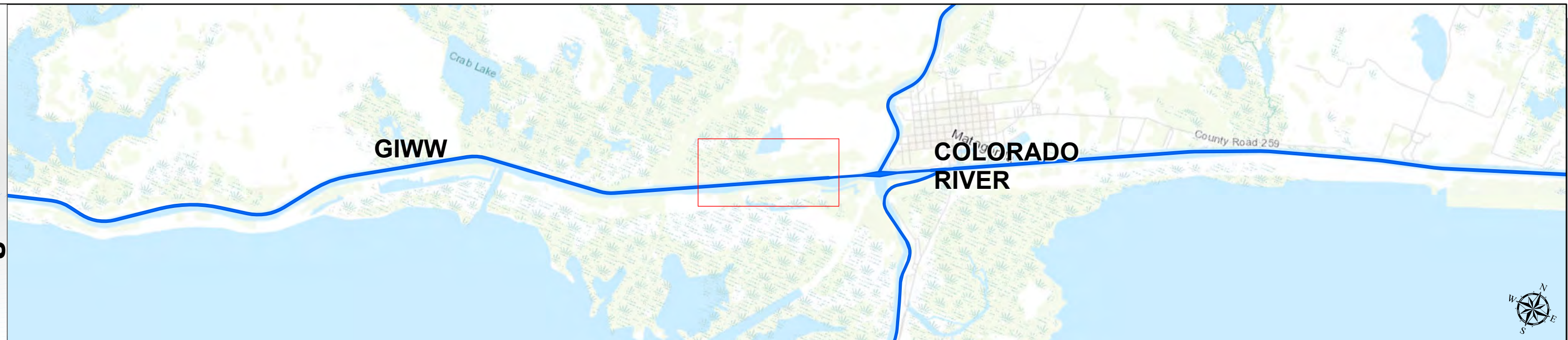
Gulf Intracoastal Waterway: Colorado River to Matagorda Bay



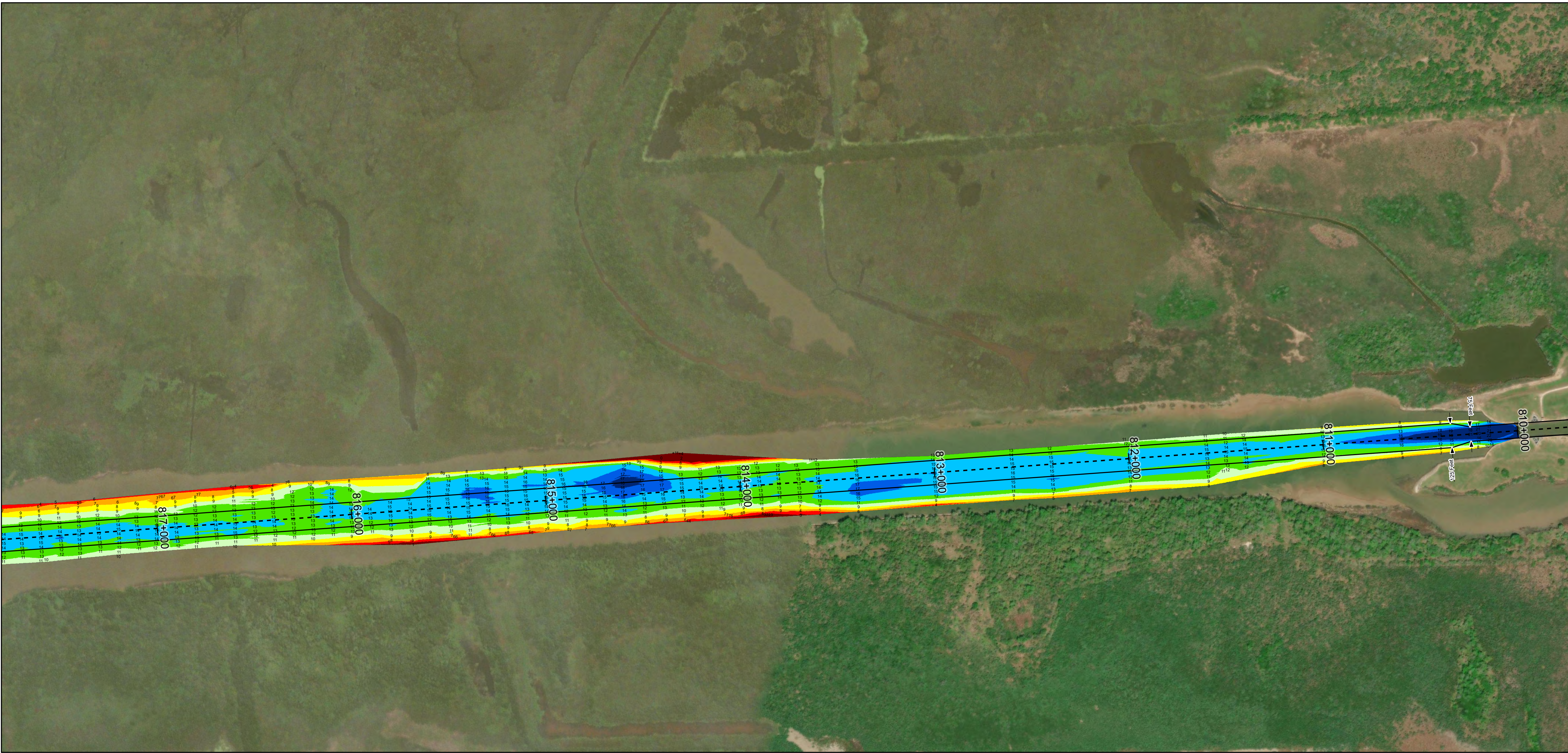
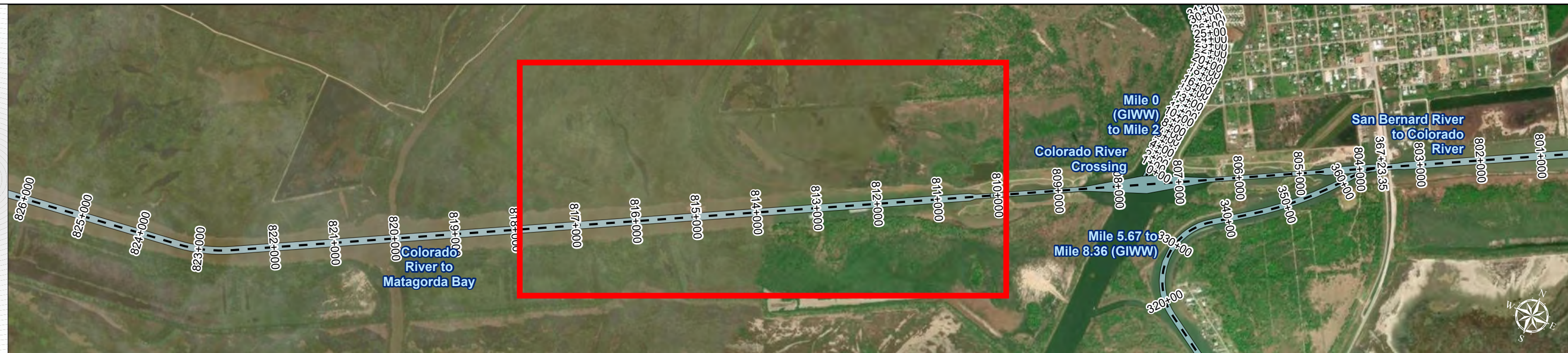
U.S. Army Corps of Engineers
Galveston District



Regional Extent



Dredging Reach Extent



Channel Features

- Channel Center Line
- Channel Toe
- Channel Dimensions

Aids to Navigation

- Green Side Aids
- Red Side Aids
- Lights

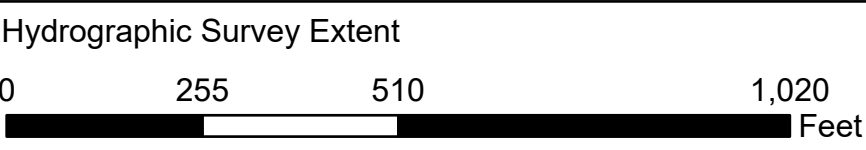
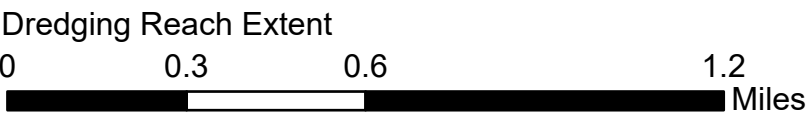
MLLW



NOTES:
1. Horizontal coordinates are referenced to Texas state plane coordinate system, south central zone nad83 us survey feet.
2. Elevations are referenced to mean lower low tide (MLLW) datum.
3. This project was designed by the galveston district of the u.s. army corps of engineers. The initials and signatures and registration designations of individuals appear on these project documents within the scope of their employment as required by er1110-1-6152.
4. The information depicted on this survey map represents the results of surveys made on the dates indicated and can only be considered as indicating the general conditions existing at that time. These conditions are subject to rapid change due to shoaling events. A prudent mariner should not rely exclusively on the information provided here. Required by 33 or 209.325
5. For the most up to date information please check our website at: <http://www.svg.usace.army.mil/Missions/Navigation/HydrographicSurveys/>
Service Layer Credits: World Topographic Map: Texas Parks & Wildlife, Esri, HERE, Garmin, INCREMENT P, USGS, METINASA, NGA, EPA, USDA
World Imagery: Maxar
World Ocean Base: Esri, GEBCO, Garmin, NaturalVue

Additional Combined Survey Dates and Stationing:
Combined survey dates 20231016_17_XC; 20240111_CS_851P000_853P000;
20240125_CS_813P800_818P800

Coordinate System: NAD 1983 StatePlane Texas South Central FIPS 4204 Feet
Projection: Lambert Conformal Conic



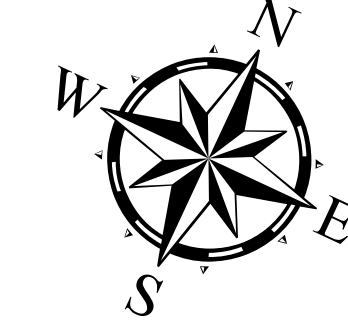
HYDROGRAPHIC SURVEY

U.S. ARMY ENGINEER DISTRICT
CORPS OF ENGINEERS
GALVESTON, TEXAS

Station: 810+000 to 901+423.55

GIWW

Colorado River to Matagorda Bay



Latest Survey Collection Date: 25 January 2024

Document Page: 1 of 13

Website Index Number: 117

Scale: 1:3,000

Mapped by: M3AOXPAC

Additional Imagery info:

Authorized Depth: -14ft.

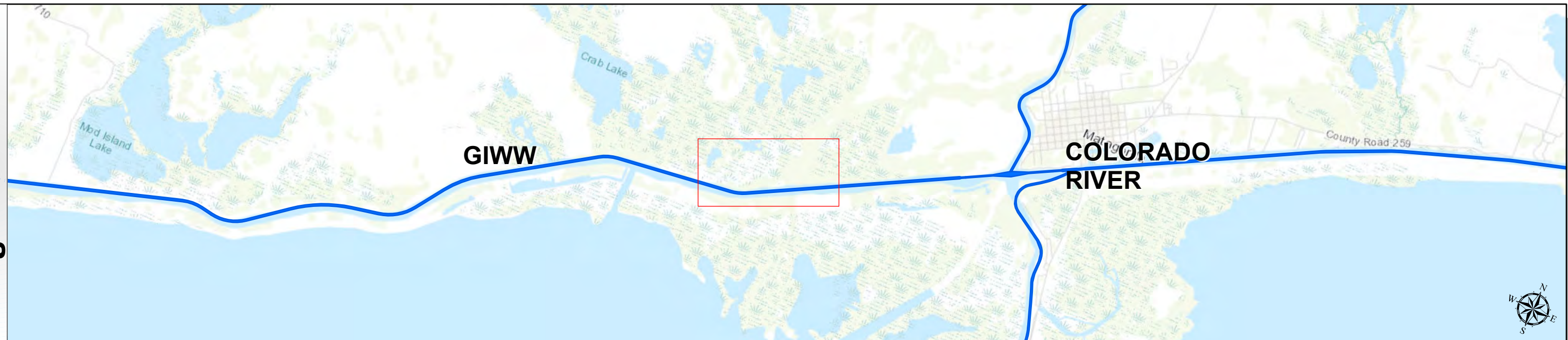
Side Slope Ratio: (Rise : Run)

PDF Print Date: 2/6/2024

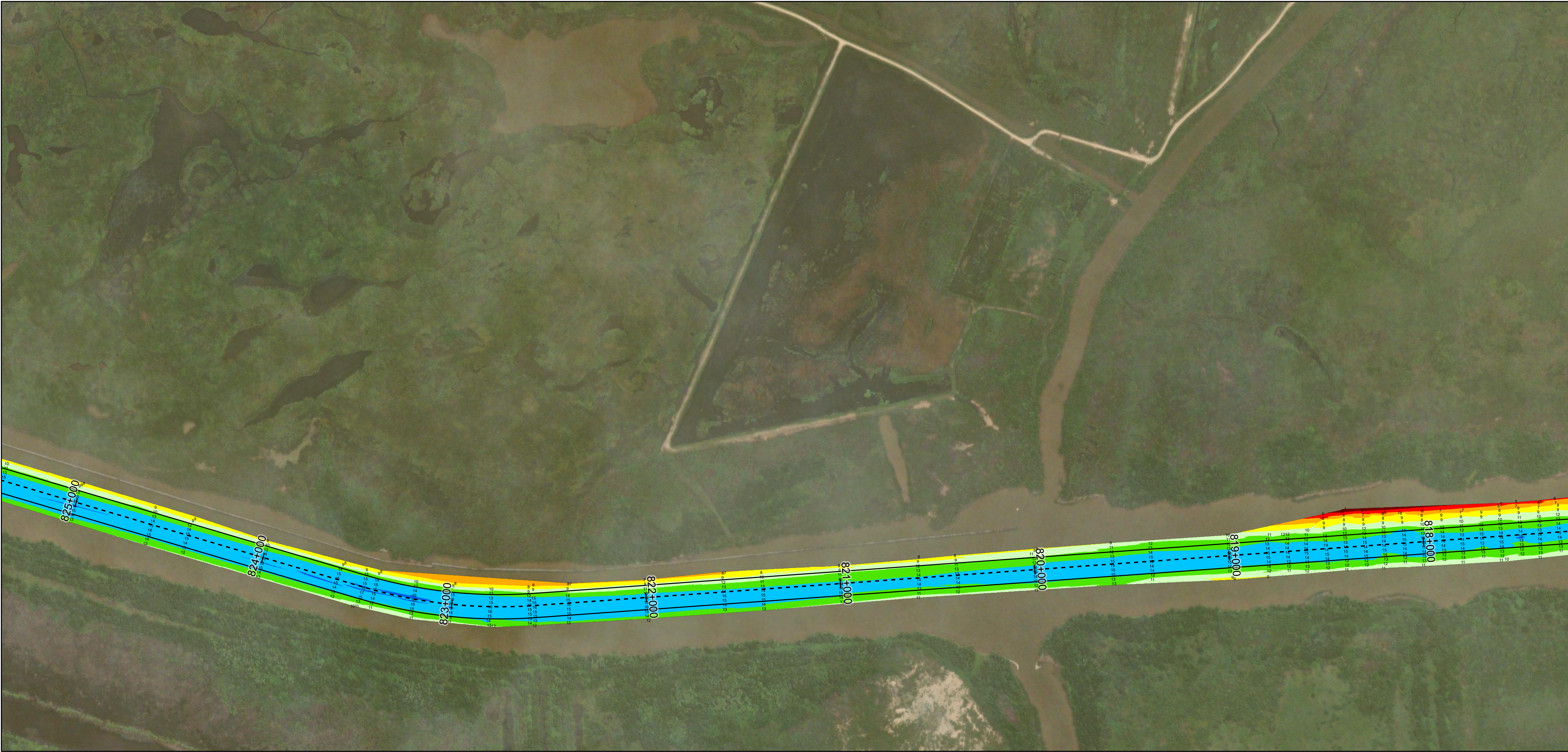
Gulf Intracoastal Waterway: Colorado River to Matagorda Bay



Regional Extent



Dredging Reach Extent



Channel Features

- Channel Center Line
- Channel Toe
- Channel Dimensions

Aids to Navigation

- Green Side Aids
- Red Side Aids
- Lights

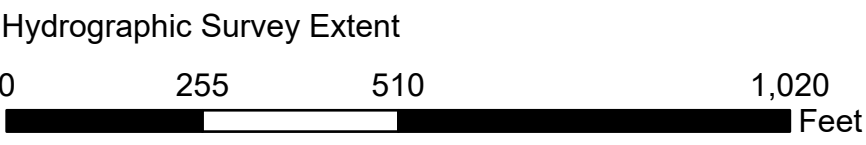
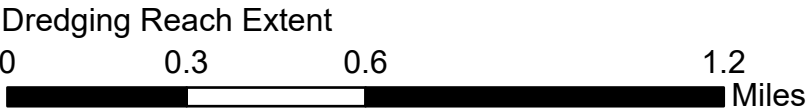
MLLW



NOTES:
1. Horizontal coordinates are referenced to Texas state plane coordinate system, south central zone nad83 us survey feet.
2. Elevations are referenced to mean lower low tide (MLLW) datum.
3. This project was designed by the Galveston District of the U.S. Army Corps of Engineers. The initials and signatures and registration designations of individuals appear on these project documents within the scope of their employment as required by 47 CFR 111.11-111.12.
4. The information depicted on this survey map represents the results of surveys made on the dates indicated and can only be considered as indicating the general conditions existing at that time. These conditions are subject to rapid change due to shoaling events. A prudent mariner should not rely exclusively on the information provided here. Required by 33 CFR 209.325
5. For the most up to date information please check our website at: <http://www.svg.usace.army.mil/Missions/Navigation/HydrographicSurveys/>
Service Layer Credits: World Topographic Map: Texas Parks & Wildlife, Esri, HERE, Garmin, INCREMENT P, USGS, METINASA, NGA, EPA, USDA
World Imagery: Maxar
World Ocean Base: Esri, GEBCO, Garmin, NaturalVue

Additional Combined Survey Dates and Stationing:
Combined survey dates 20231016_17_XC; 20240111_CS_851P000_853P000;
20240125_CS_813P800_818P800

Coordinate System: NAD 1983 StatePlane Texas South Central FIPS 4204 Feet
Projection: Lambert Conformal Conic

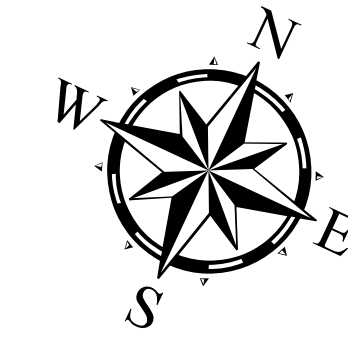


HYDROGRAPHIC SURVEY

U.S. ARMY ENGINEER DISTRICT
CORPS OF ENGINEERS
GALVESTON, TEXAS

Station: 810+000 to 901+423.55
GIWW

Colorado River to Matagorda Bay

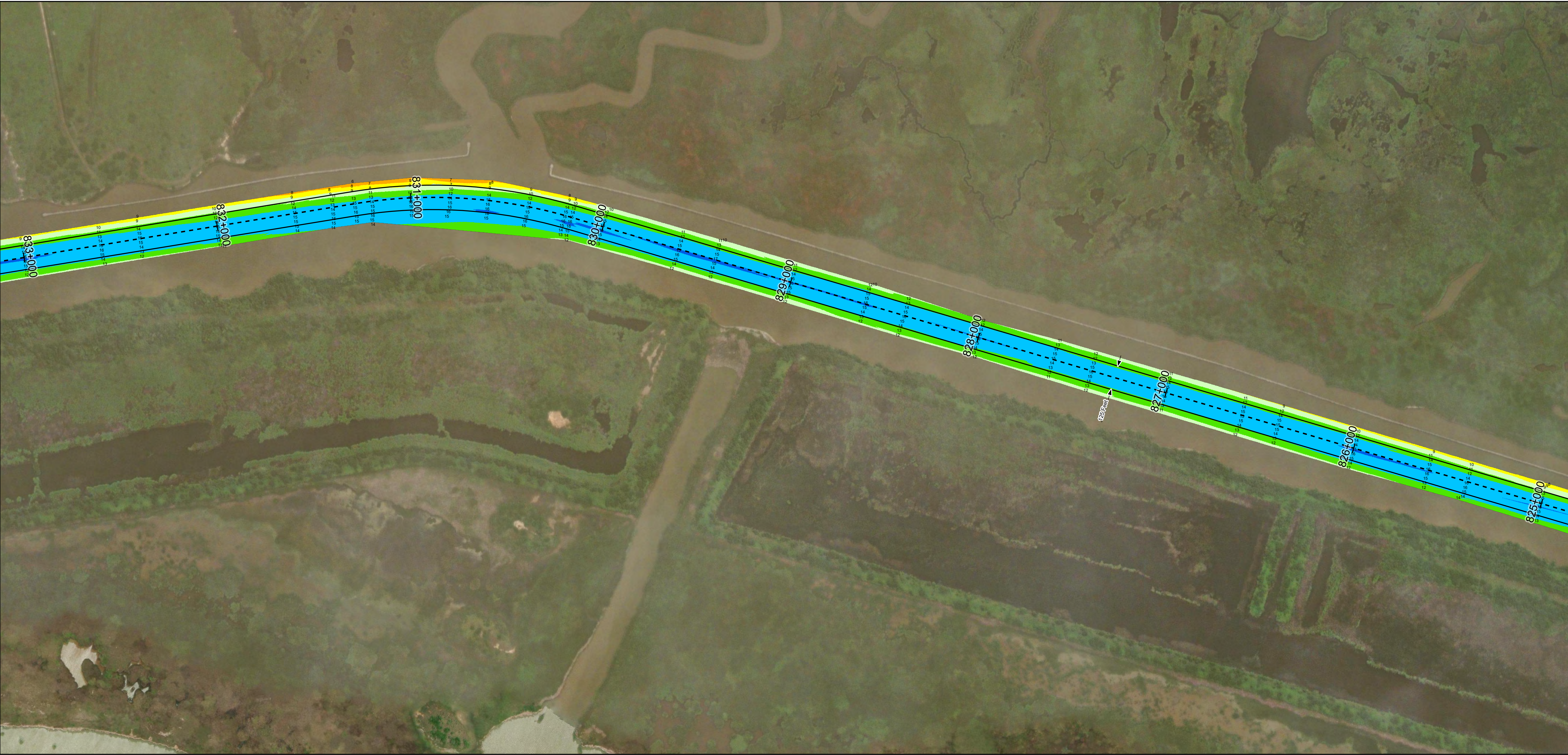
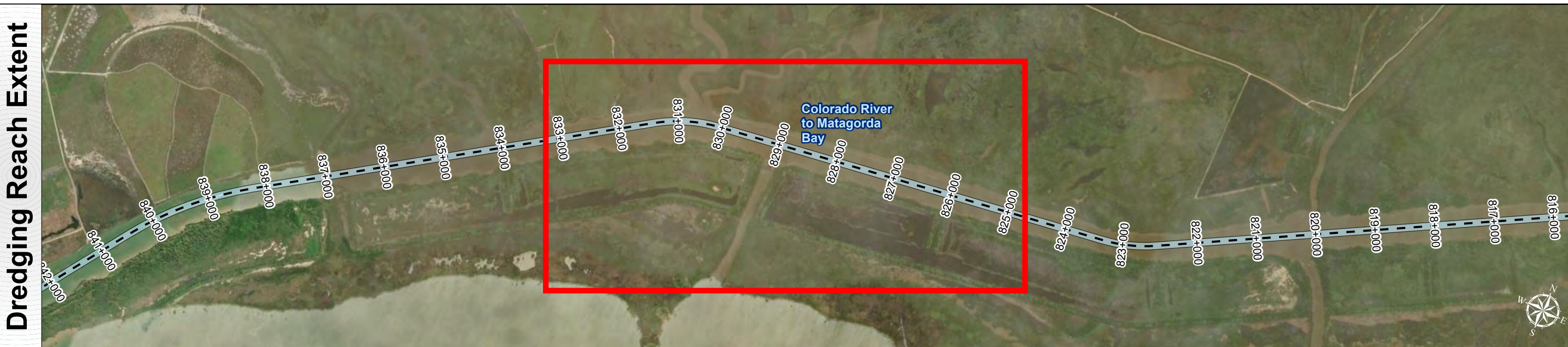


Latest Survey Collection Date: 25 January 2024		Authorized Depth: -14ft.
Document Page: 2 of 13	Website Index Number: 118	Side Slope Ratio: (Rise : Run)
Scale: 1:3,000		PDF Print Date: 2/6/2024
Mapped by: M3AOXPAC		
Additional Imagery info:		

Gulf Intracoastal Waterway: Colorado River to Matagorda Bay



U.S. Army Corps of Engineers
Galveston District



Channel Features

- Channel Center Line
- Channel Toe
- Channel Dimensions

Aids to Navigation

- Green Side Aids
- Red Side Aids
- Lights

MLLW

0 - 4	4 - 6	6 - 8	8 - 10	10 - 12	12 - 14	14 - 16	16 - 18	< 18
Dark Red	Red	Orange	Yellow	Light Green	Green	Blue	Dark Blue	Black

NOTES:

- Horizontal coordinates are referenced to Texas state plane coordinate system, south central zone nad83 us survey feet.
- Elevations are referenced to mean lower low tide (MLLW) datum.
- This project was designed by the Galveston District of the U.S. Army Corps of Engineers. The initials and signatures and registration designations of individuals appear on these project documents within the scope of their employment as required by 47 CFR 111.011-011.012.
- The information depicted on this survey map represents the results of surveys made on the dates indicated and can only be considered as indicating the general conditions existing at that time. These conditions are subject to rapid change due to shoaling events. A prudent mariner should not rely exclusively on the information provided here. Required by 33 CFR 209.325.
- For the most up to date information please check our website at: <http://www.svg.usace.army.mil/Missions/Navigation/HydrographicSurveys/>

Service Layer Credits: World Topographic Map: Texas Parks & Wildlife, Esri, HERE, Garmin, INCREMENT P, USGS, METI/NASA, NGA, EPA, USDA
World Imagery: Maxar
World Ocean Base: Esri, GEBCO, Garmin, NaturalVue

Additional Combined Survey Dates and Stationing:

Combined survey dates 20231016_17_XC; 20240111_CS_851P000_853P000; 20240125_CS_813P800_818P800

Coordinate System: NAD 1983 StatePlane Texas South Central FIPS 4204 Feet
Projection: Lambert Conformal Conic

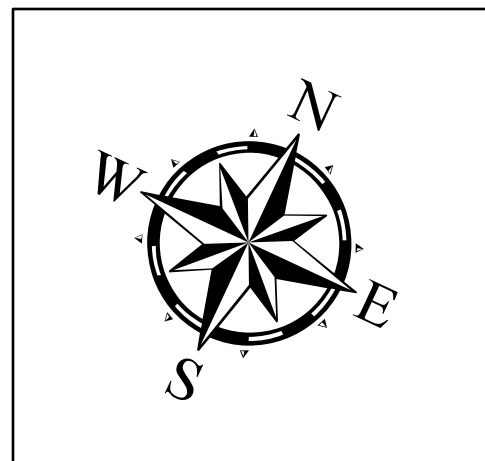
Dredging Reach Extent

0 0.3 0.6 1.2 Miles

Hydrographic Survey Extent

0 255 510 1,020 Feet

Latest Survey Collection Date: 25 January 2024	Authorized Depth: -14ft.	
	Side Slope Ratio: (Rise : Run)	PDF Print Date: 2/6/2024
Document Page: 3 of 13	Website Index Number: 119	
Scale: 1:3,000		
Mapped by: M3AOXPAC		
Additional Imagery info:		



HYDROGRAPHIC SURVEY

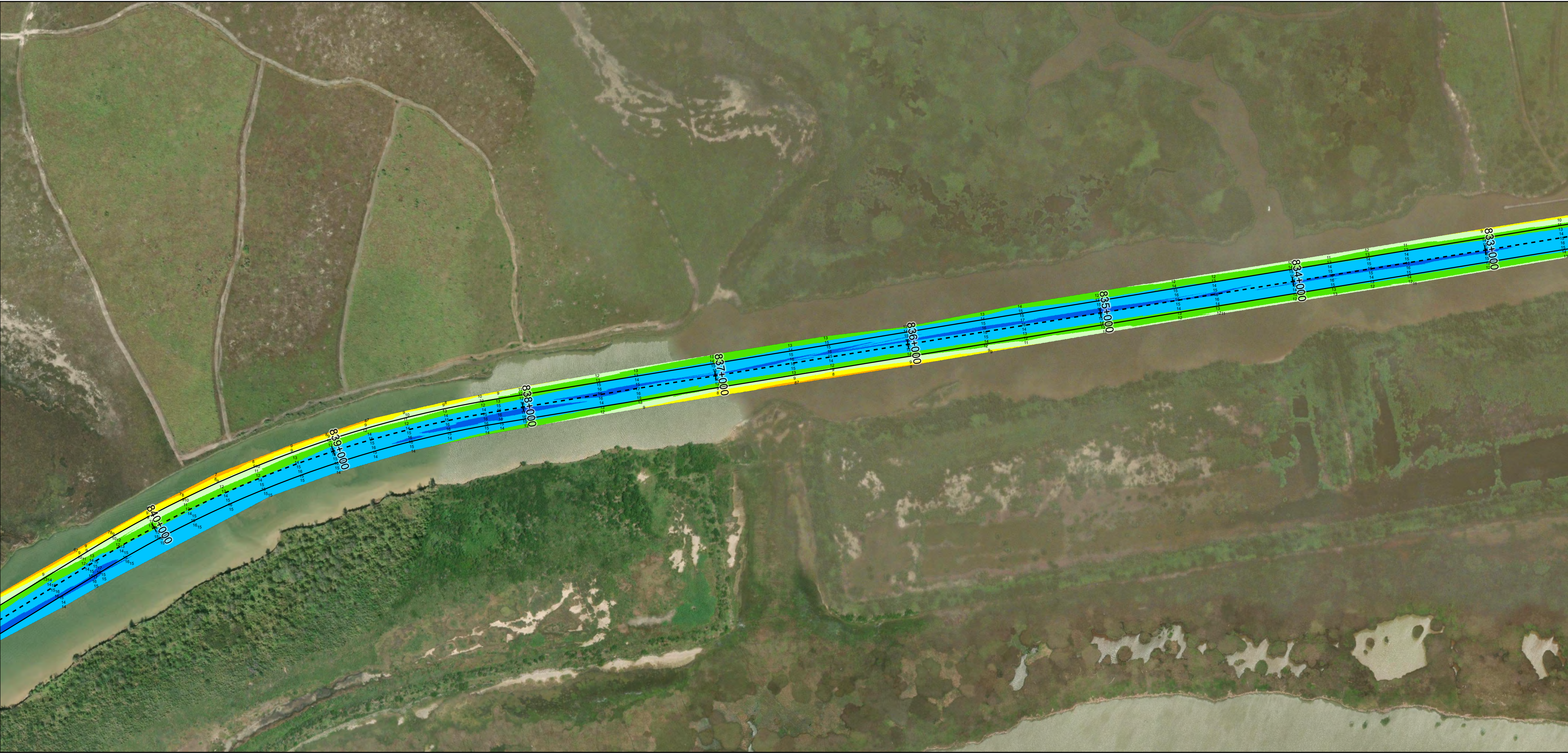
U.S. ARMY ENGINEER DISTRICT
CORPS OF ENGINEERS
GALVESTON, TEXAS

Station: 810+000 to 901+423.55

GIWW

Colorado River to Matagorda Bay

Gulf Intracoastal Waterway: Colorado River to Matagorda Bay



Channel Features

- Channel Center Line
- Channel Toe
- Channel Dimensions

Aids to Navigation

- Green Side Aids
- Red Side Aids
- Lights

MLLW

0 - 4	4 - 6	6 - 8	8 - 10	10 - 12	12 - 14	14 - 16	16 - 18	< 18
Dark Red	Red	Orange	Yellow	Light Green	Green	Blue	Dark Blue	Black

NOTES:

- Horizontal coordinates are referenced to Texas state plane coordinate system, south central zone nad83 us survey feet.
- Elevations are referenced to mean lower low tide (MLLW) datum.
- This project was designed by the Galveston District of the U.S. Army Corps of Engineers. The initials and signatures and registration designations of individuals appear on these project documents within the scope of their employment as required by 47 CFR 111.011-011.012.
- The information depicted on this survey map represents the results of surveys made on the dates indicated and can only be considered as indicating the general conditions existing at that time. These conditions are subject to rapid change due to shoaling events. A prudent mariner should not rely exclusively on the information provided here. Required by 33 CFR 209.325
- For the most up to date information please check our website at: <http://www.svg.usace.army.mil/Missions/Navigation/HydrographicSurveys/>

Service Layer Credits: World Topographic Map: Texas Parks & Wildlife, Esri, HERE, Garmin, INCREMENT P, USGS, METI/NASA, NGA, EPA, USDA
World Imagery: Maxar
World Ocean Base: Esri, GEBCO, Garmin, NaturalVue

Additional Combined Survey Dates and Stationing:

Combined survey dates 20231016_17_XC; 20240111_CS_851P000_853P000; 20240125_CS_813P800_818P800

Coordinate System: NAD 1983 StatePlane Texas South Central FIPS 4204 Feet
Projection: Lambert Conformal Conic

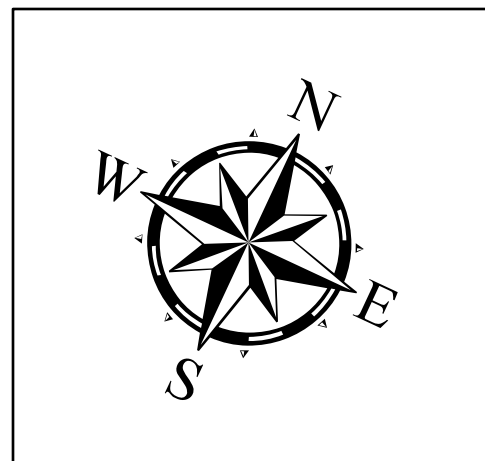
Dredging Reach Extent

0 0.3 0.6 1.2 Miles

Hydrographic Survey Extent

0 255 510 1,020 Feet

Latest Survey Collection Date: 25 January 2024		Authorized Depth: -14ft.
Document Page: 4 of 13	Website Index Number: 120	Side Slope Ratio: (Rise : Run)
Scale: 1:3,000		PDF Print Date: 2/6/2024
Mapped by: M3AOXPAC		
Additional Imagery info:		



HYDROGRAPHIC SURVEY

U.S. ARMY ENGINEER DISTRICT
CORPS OF ENGINEERS
GALVESTON, TEXAS

Station: 810+000 to 901+423.55

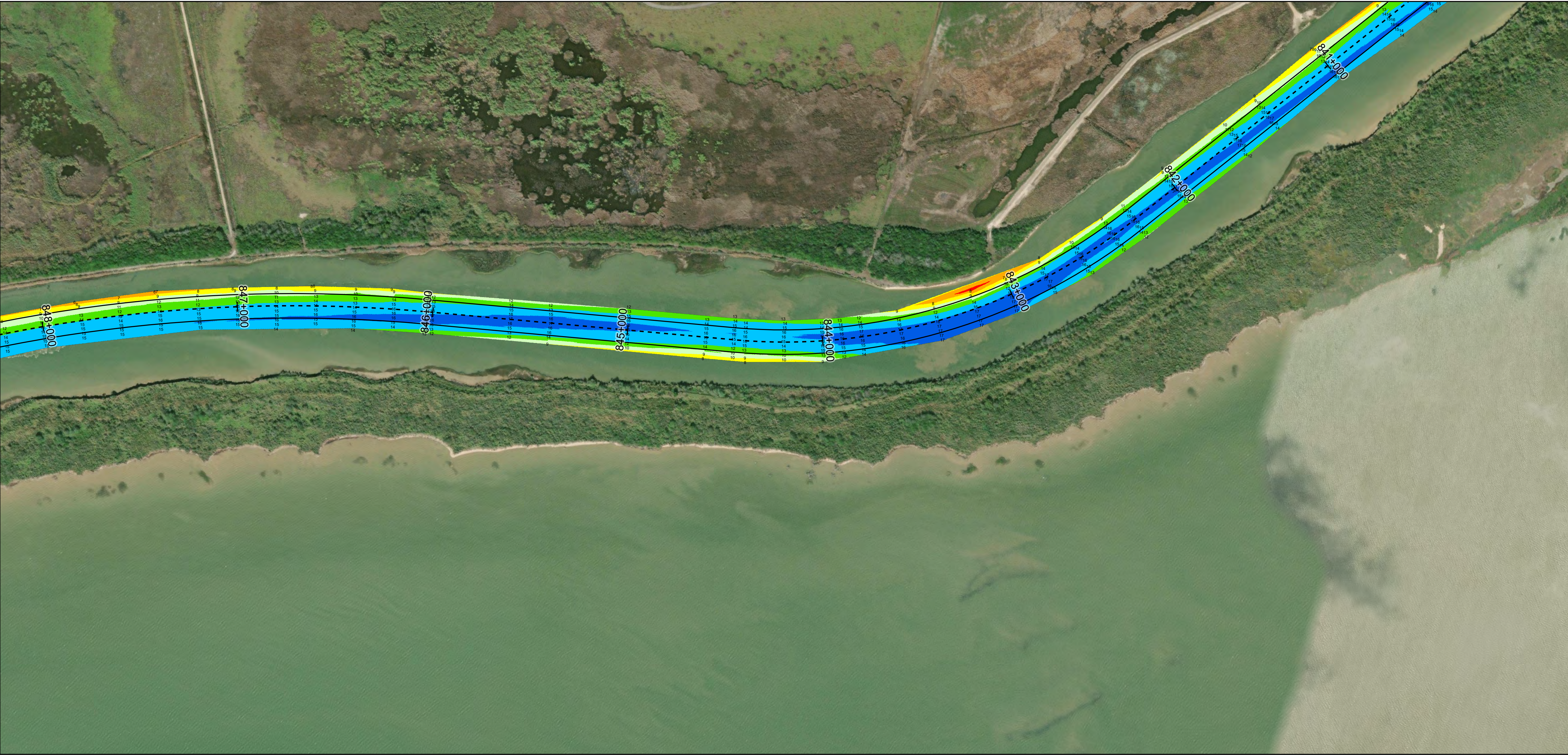
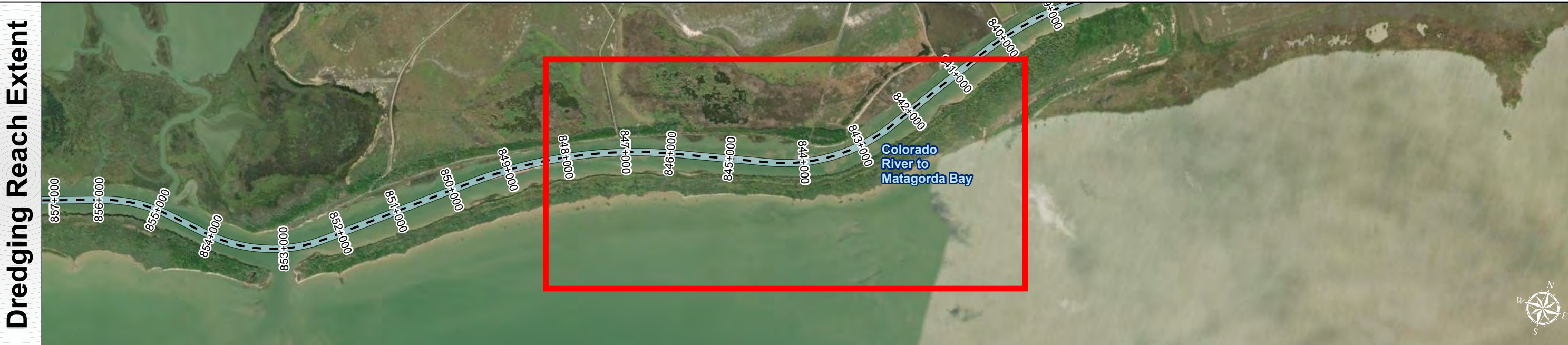
GIWW

Colorado River to Matagorda Bay

Gulf Intracoastal Waterway: Colorado River to Matagorda Bay



U.S. Army Corps of Engineers
Galveston District



Channel Features

- Channel Center Line
- Channel Toe
- Channel Dimensions

Aids to Navigation

- Green Side Aids
- Red Side Aids
- Lights

MLLW

0 - 4	4 - 6	6 - 8	8 - 10	10 - 12	12 - 14	14 - 16	16 - 18	< 18
Dark Blue	Blue	Light Blue	Green	Yellow	Orange	Red	Dark Red	Black

NOTES:

- Horizontal coordinates are referenced to Texas state plane coordinate system, south central zone nad83 us survey feet.
- Elevations are referenced to mean lower low tide (MLLW) datum.
- This project was designed by the Galveston District of the U.S. Army Corps of Engineers. The initials and signatures and registration designations of individuals appear on these project documents within the scope of their employment as required by 47 CFR 111.01-0112.
- The information depicted on this survey map represents the results of surveys made on the dates indicated and can only be considered as indicating the general conditions existing at that time. These conditions are subject to rapid change due to shoaling events. A prudent mariner should not rely exclusively on the information provided here. Required by 33 CFR 209.325.
- For the most up to date information please check our website at: <http://www.svg.usace.army.mil/Missions/Navigation/HydrographicSurveys/>

Service Layer Credits: World Topographic Map: Texas Parks & Wildlife, Esri, HERE, Garmin, INCREMENT P, USGS, METINASA, NGA, EPA, USDA
World Imagery: Maxar
World Ocean Base: Esri, GEBCO, Garmin, NaturalVue

Additional Combined Survey Dates and Stationing:

Combined survey dates 20231016_17_XC; 20240111_CS_851P000_853P000; 20240125_CS_813P800_818P800

Coordinate System: NAD 1983 StatePlane Texas South Central FIPS 4204 Feet
Projection: Lambert Conformal Conic

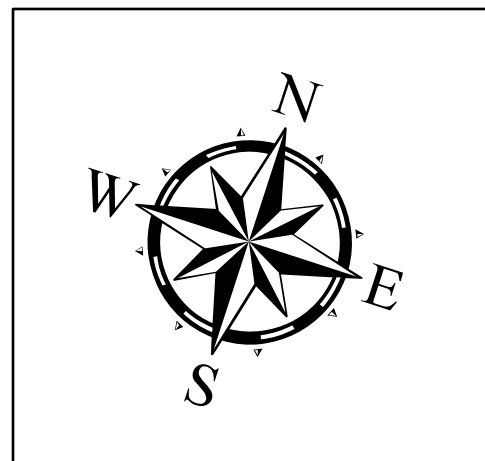
Dredging Reach Extent

0 0.3 0.6 1.2 Miles

Hydrographic Survey Extent

0 255 510 1,020 Feet

Latest Survey Collection Date: 25 January 2024		Authorized Depth: -14ft.
Document Page: 5 of 13	Website Index Number: 121	Side Slope Ratio: (Rise : Run)
Scale: 1:3,000		PDF Print Date: 2/6/2024
Mapped by: M3AOXPAC		
Additional Imagery info:		



HYDROGRAPHIC SURVEY

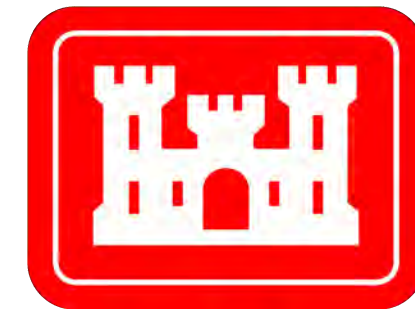
U.S. ARMY ENGINEER DISTRICT
CORPS OF ENGINEERS
GALVESTON, TEXAS

Station: 810+000 to 901+423.55

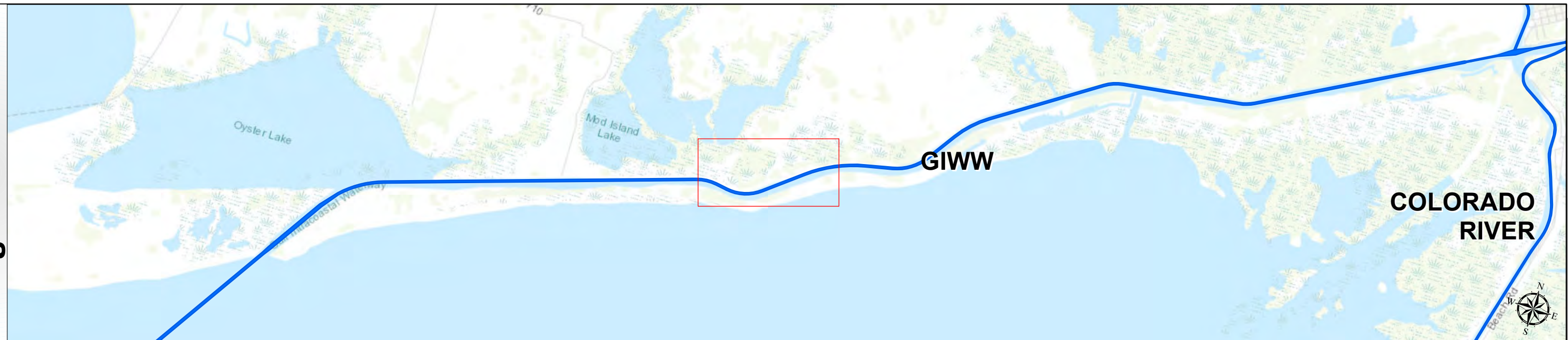
GIWW

Colorado River to Matagorda Bay

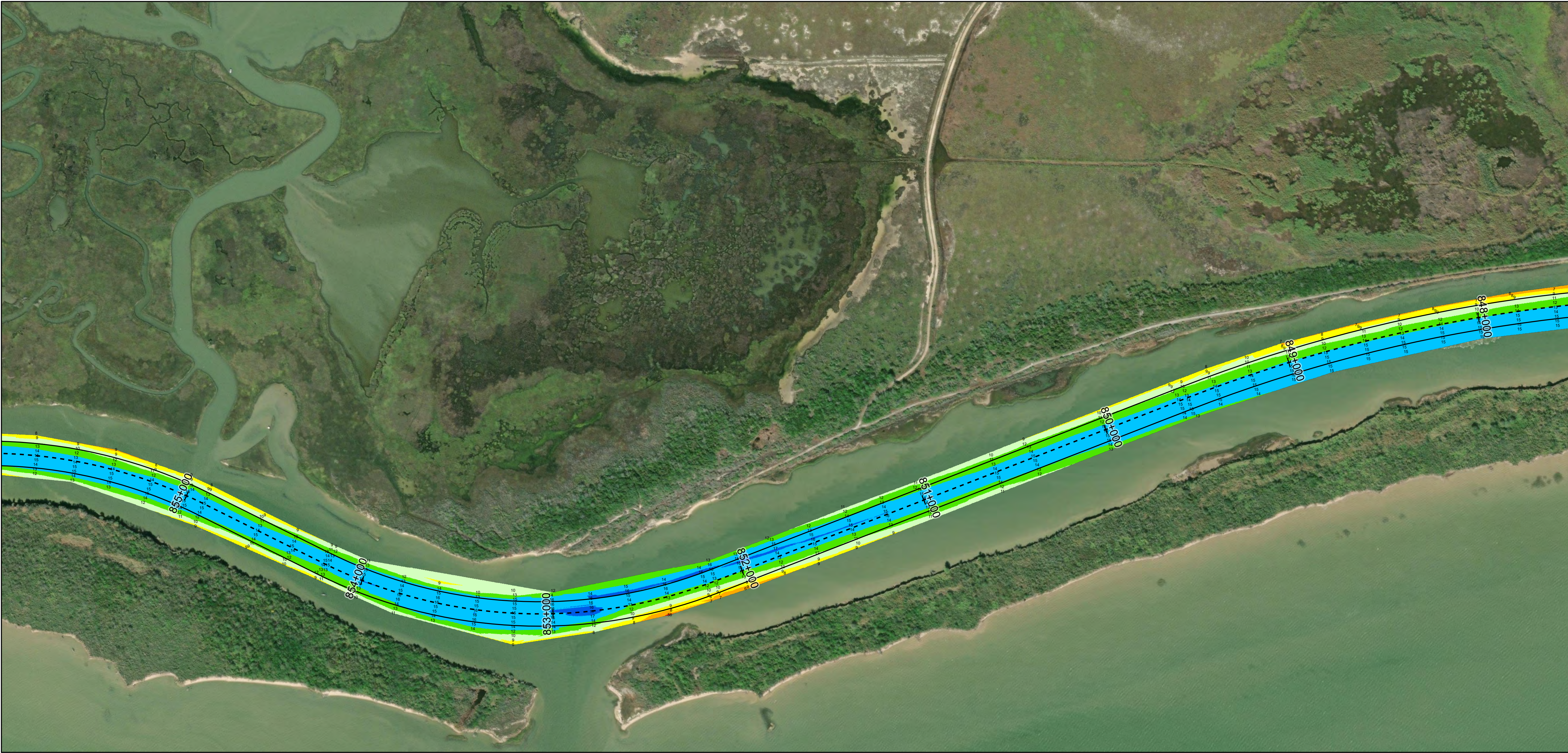
Gulf Intracoastal Waterway: Colorado River to Matagorda Bay



Regional Extent



Dredging Reach Extent



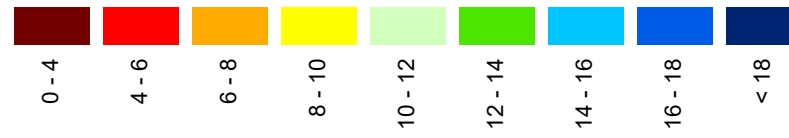
Channel Features

- Channel Center Line
- Channel Toe
- Channel Dimensions

Aids to Navigation

- Green Side Aids
- Red Side Aids
- Lights

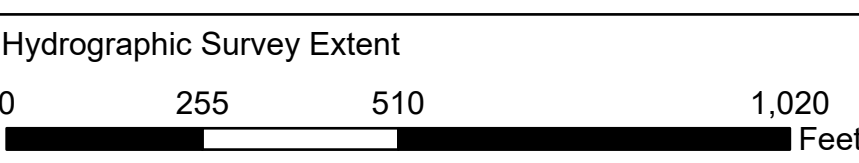
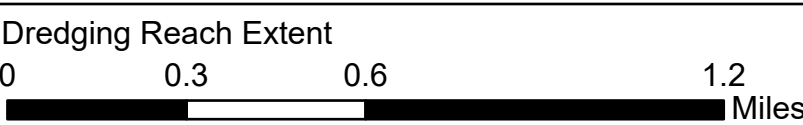
MLLW



NOTES:
1. Horizontal coordinates are referenced to Texas state plane coordinate system, south central zone nad83 us survey feet.
2. Elevations are referenced to mean lower low tide (MLLW) datum.
3. This project was designed by the Galveston District of the U.S. Army Corps of Engineers. The initials and signatures and registration designations of individuals appear on these project documents within the scope of their employment as required by 47 CFR 110.1-110.12.
4. The information depicted on this survey map represents the results of surveys made on the dates indicated and can only be considered as indicating the general conditions existing at that time. These conditions are subject to rapid change due to shoaling events. A prudent mariner should not rely exclusively on the information provided here. Required by 33 CFR 209.325.
5. For the most up to date information please check our website at: <http://www.svg.usace.army.mil/Missions/Navigation/HydrographicSurveys/>
Service Layer Credits: World Topographic Map: Texas Parks & Wildlife, Esri, HERE, Garmin, INCREMENT P, USGS, METI/NASA, NGA, EPA, USDA, World Imagery: Maxar, World Ocean Base: Esri, GEBCO, Garmin, NaturalVue

Additional Combined Survey Dates and Stationing:
Combined survey dates 20231016_17_XC; 20240111_CS_851P000_853P000;
20240125_CS_813P800_818P800

Coordinate System: NAD 1983 StatePlane Texas South Central FIPS 4204 Feet
Projection: Lambert Conformal Conic

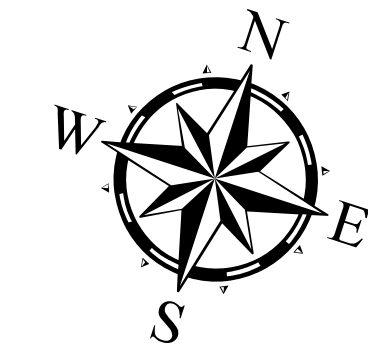


HYDROGRAPHIC SURVEY

U.S. ARMY ENGINEER DISTRICT
CORPS OF ENGINEERS
GALVESTON, TEXAS

Station: 810+000 to 901+423.55
GIWW

Colorado River to Matagorda Bay



Latest Survey Collection Date: 25 January 2024

Document Page: 6 of 13

Website Index Number: 122

Authorized Depth: -14ft.

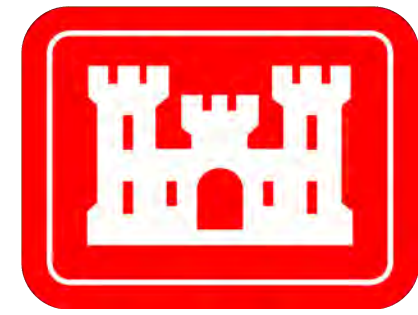
Side Slope Ratio: (Rise : Run)

PDF Print Date: 2/6/2024

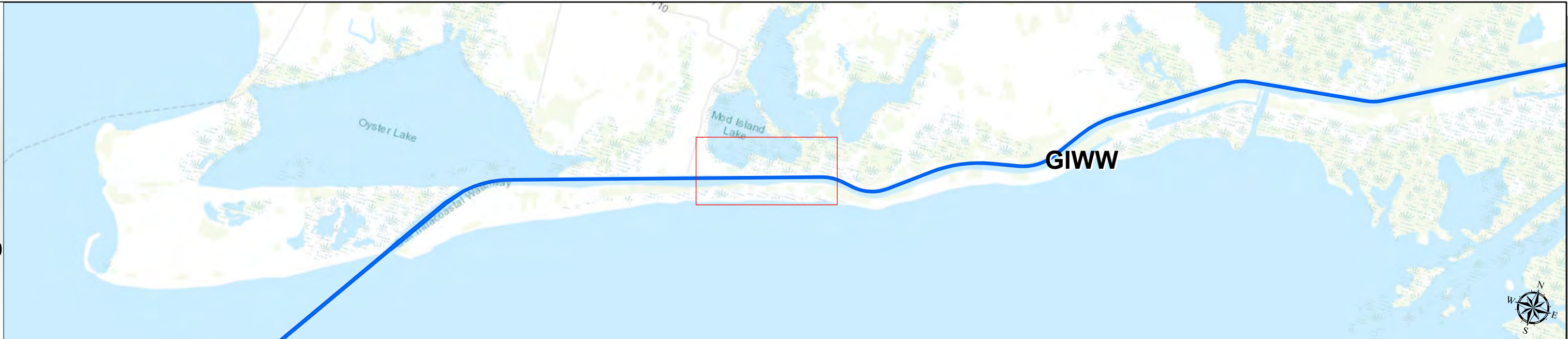
Mapped by: M3AOXPAC

Additional Imagery info:

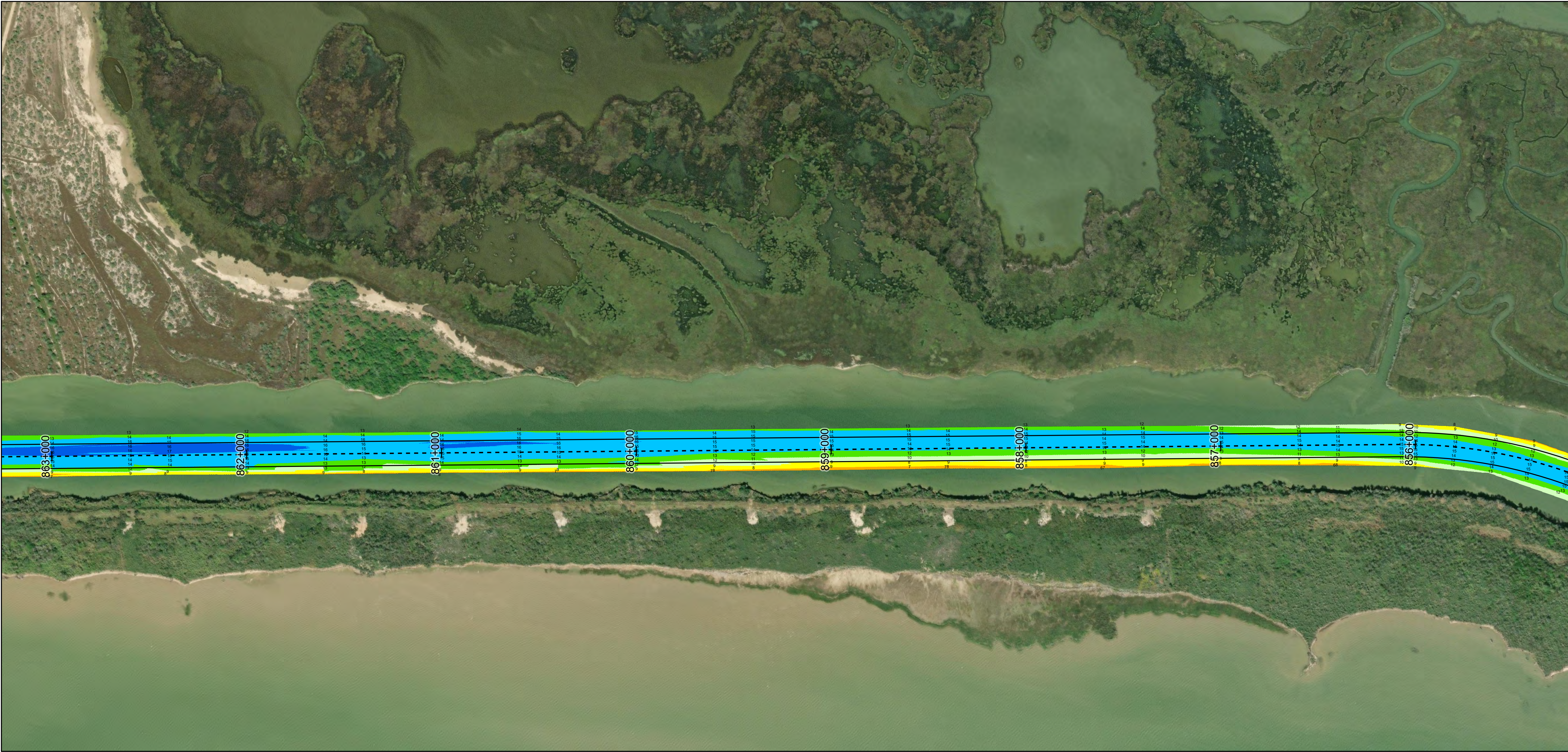
Gulf Intracoastal Waterway: Colorado River to Matagorda Bay



Regional Extent



Dredging Reach Extent



Channel Features

- Channel Center Line
- Channel Toe
- Channel Dimensions

Aids to Navigation

- Green Side Aids
- Red Side Aids
- Lights

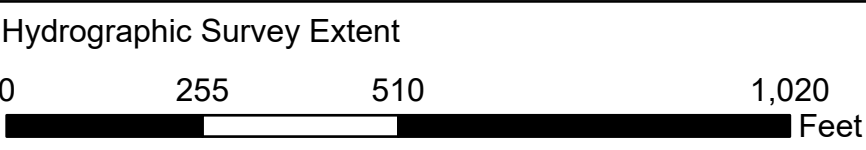
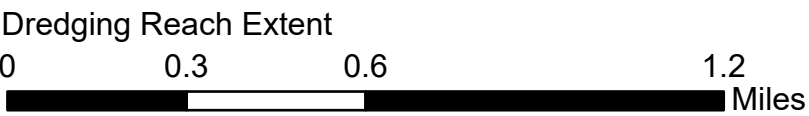
MLLW



NOTES:
1. Horizontal coordinates are referenced to Texas state plane coordinate system, south central zone nad83 us survey feet.
2. Elevations are referenced to mean lower low tide (MLLW) datum.
3. This project was designed by the Galveston District of the U.S. Army Corps of Engineers. The initials and signatures and registration designations of individuals appear on these project documents within the scope of their employment as required by 47 CFR 111.11-111.12.
4. The information depicted on this survey map represents the results of surveys made on the dates indicated and can only be considered as indicating the general conditions existing at that time. These conditions are subject to rapid change due to shoaling events. A prudent mariner should not rely exclusively on the information provided here. Required by 33 CFR 209.325.
5. For the most up to date information please check our website at: <http://www.svg.usace.army.mil/Missions/Navigation/HydrographicSurveys/>
Service Layer Credits: World Topographic Map: Texas Parks & Wildlife, Esri, HERE, Garmin, INCREMENT P, USGS, METI/NASA, NGA, EPA, USDA
World Imagery: Maxar
World Ocean Base: Esri, GEBCO, Garmin, NaturalVue

Additional Combined Survey Dates and Stationing:
Combined survey dates 20231016_17_XC; 20240111_CS_851P000_853P000;
20240125_CS_813P800_818P800

Coordinate System: NAD 1983 StatePlane Texas South Central FIPS 4204 Feet
Projection: Lambert Conformal Conic



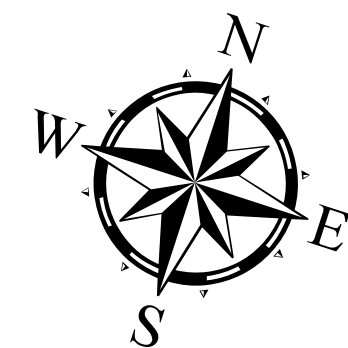
HYDROGRAPHIC SURVEY

U.S. ARMY ENGINEER DISTRICT
CORPS OF ENGINEERS
GALVESTON, TEXAS

Station: 810+000 to 901+423.55

GIWW

Colorado River to Matagorda Bay



Latest Survey Collection Date: 25 January 2024

Document Page: 7 of 13

Website Index Number: 123

Scale: 1:3,000

Mapped by: M3AOXPAC

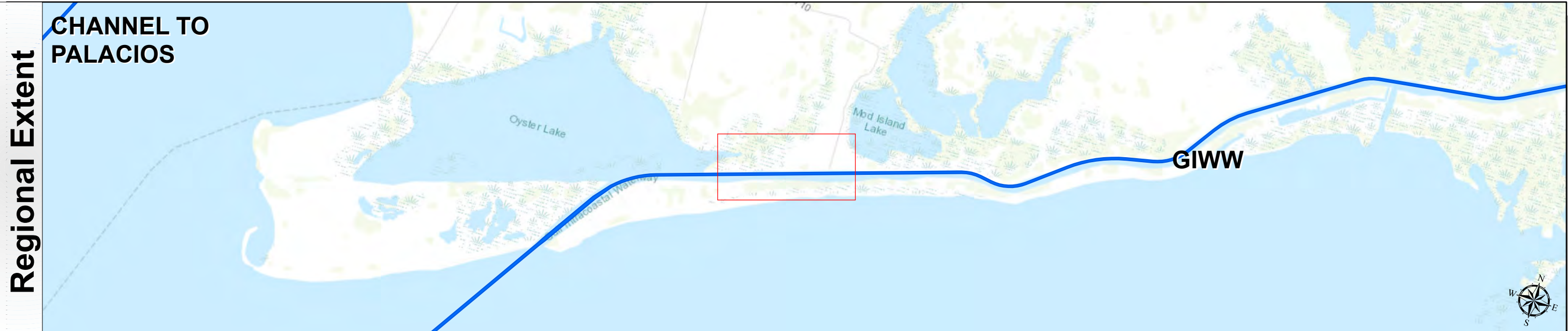
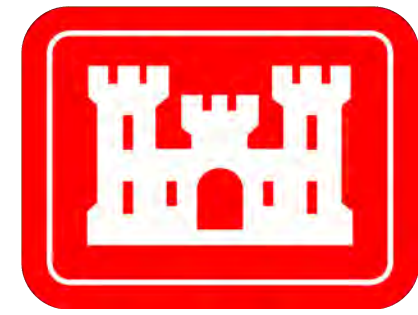
Additional Imagery info:

Authorized Depth: -14ft.

Side Slope Ratio: (Rise : Run)

PDF Print Date: 2/6/2024

Gulf Intracoastal Waterway: Colorado River to Matagorda Bay



Channel Features

- Channel Center Line
- Channel Toe
- Channel Dimensions

Aids to Navigation

- Green Side Aids
- Red Side Aids
- Lights

MLLW

0 - 4	4 - 6	6 - 8	8 - 10	10 - 12	12 - 14	14 - 16	16 - 18	< 18
Dark Blue	Blue	Light Blue	Green	Yellow	Orange	Red	Dark Red	Black

NOTES:
1. Horizontal coordinates are referenced to Texas state plane coordinate system, south central zone nad83 us survey feet.
2. Elevations are referenced to mean lower low tide (MLLW) datum.
3. This project was designed by the galveston district of the u.s. army corps of engineers. The initials and signatures and registration designations of individuals appear on these project documents within the scope of their employment as required by er1110-1-6152.
4. The information depicted on this survey map represents the results of surveys made on the dates indicated and can only be considered as indicating the general conditions existing at that time. These conditions are subject to rapid change due to shoaling events. A prudent mariner should not rely exclusively on the information provided here. Required by 33 or 209.325
5. For the most up to date information please check our website at: <http://www.svg.usace.army.mil/Missions/Navigation/HydrographicSurveys/>
Service Layer Credits: World Topographic Map: Texas Parks & Wildlife, Esri, HERE, Garmin, INCREMENT P, USGS, METINASA, NGA, EPA, USDA
World Imagery: Maxar
World Ocean Base: Esri, GEBCO, Garmin, NaturalVue

Additional Combined Survey Dates and Stationing:
Combined survey dates 20231016_17_XC; 20240111_CS_851P000_853P000;
20240125_CS_813P800_818P800

Coordinate System: NAD 1983 StatePlane Texas South Central FIPS 4204 Feet
Projection: Lambert Conformal Conic

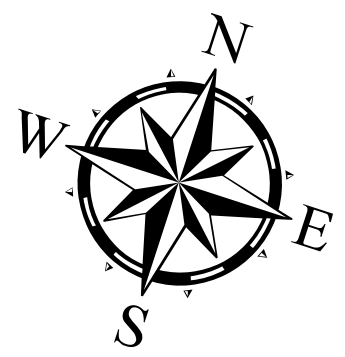
Dredging Reach Extent

0 0.3 0.6 1.2 Miles

Hydrographic Survey Extent

0 255 510 1,020 Feet

Latest Survey Collection Date: 25 January 2024		Authorized Depth: -14ft.
Document Page: 8 of 13	Website Index Number: 124	Side Slope Ratio: (Rise : Run)
Scale: 1:3,000		PDF Print Date: 2/6/2024
Mapped by: M3AOXPAC		
Additional Imagery info:		



HYDROGRAPHIC SURVEY

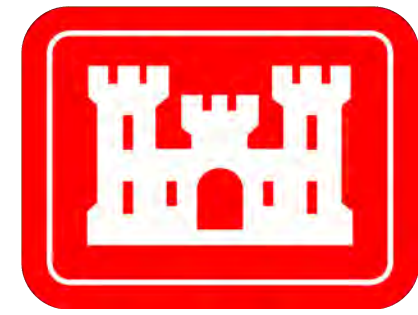
U.S. ARMY ENGINEER DISTRICT
CORPS OF ENGINEERS
GALVESTON, TEXAS

Station: 810+000 to 901+423.55

GIWW

Colorado River to Matagorda Bay

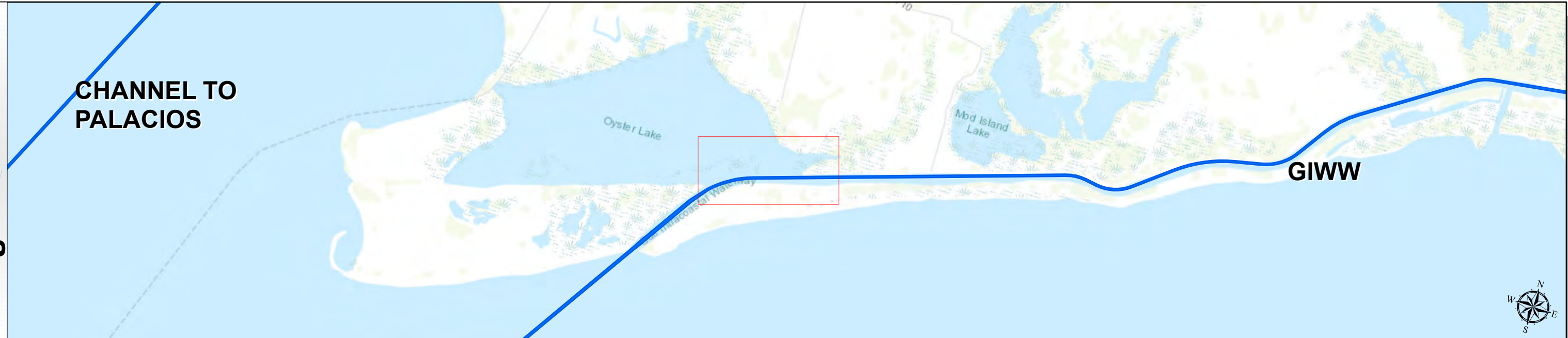
Gulf Intracoastal Waterway: Colorado River to Matagorda Bay



U.S. Army Corps of Engineers
Galveston District



Regional Extent



Dredging Reach Extent



Channel Features

- Channel Center Line
- Channel Toe
- Channel Dimensions

Aids to Navigation

- Green Side Aids
- Red Side Aids
- Lights

MLLW



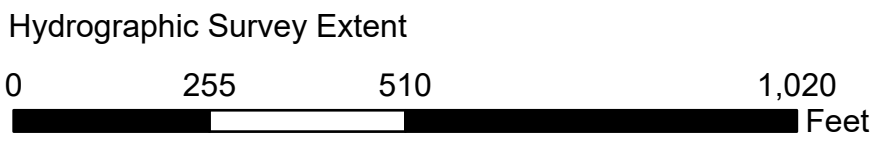
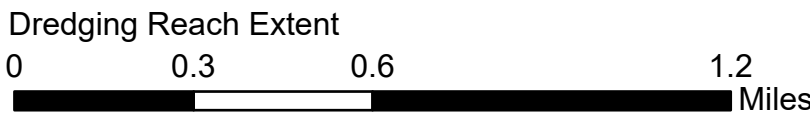
NOTES:

- Horizontal coordinates are referenced to Texas state plane coordinate system, south central zone nad83 us survey feet.
 - Elevations are referenced to mean lower low tide (MLLW) datum.
 - This project was designed by the Galveston District of the U.S. Army Corps of Engineers. The initials and signatures and registration designations of individuals appear on these project documents within the scope of their employment as required by 47 CFR 111.01-0112.
 - The information depicted on this survey map represents the results of surveys made on the dates indicated and can only be considered as indicating the general conditions existing at that time. These conditions are subject to rapid change due to shoaling events. A prudent mariner should not rely exclusively on the information provided here. Required by 33 CFR 209.325.
 - For the most up to date information please check our website at: <http://www.svg.usace.army.mil/Missions/Navigation/HydrographicSurveys/>
- Service Layer Credits: World Topographic Map: Texas Parks & Wildlife, Esri, HERE, Garmin, INCREMENT P, USGS, MET/NASA, NGA, EPA, USDA
World Imagery: Maxar
World Ocean Base: Esri, GEBCO, Garmin, NaturalVue

Additional Combined Survey Dates and Stationing:

Combined survey dates 20231016_17_XC; 20240111_CS_851P000_853P000;
20240125_CS_813P800_818P800

Coordinate System: NAD 1983 StatePlane Texas South Central FIPS 4204 Feet
Projection: Lambert Conformal Conic

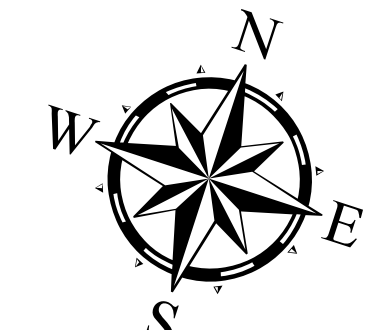


HYDROGRAPHIC SURVEY

U.S. ARMY ENGINEER DISTRICT
CORPS OF ENGINEERS
GALVESTON, TEXAS

Station: 810+000 to 901+423.55
GIWW

Colorado River to Matagorda Bay



Latest Survey Collection Date: 25 January 2024

Document Page: 9 of 13

Website Index Number: 125

Authorized Depth: -14ft.

Side Slope Ratio: (Rise : Run)

PDF Print Date: 2/6/2024

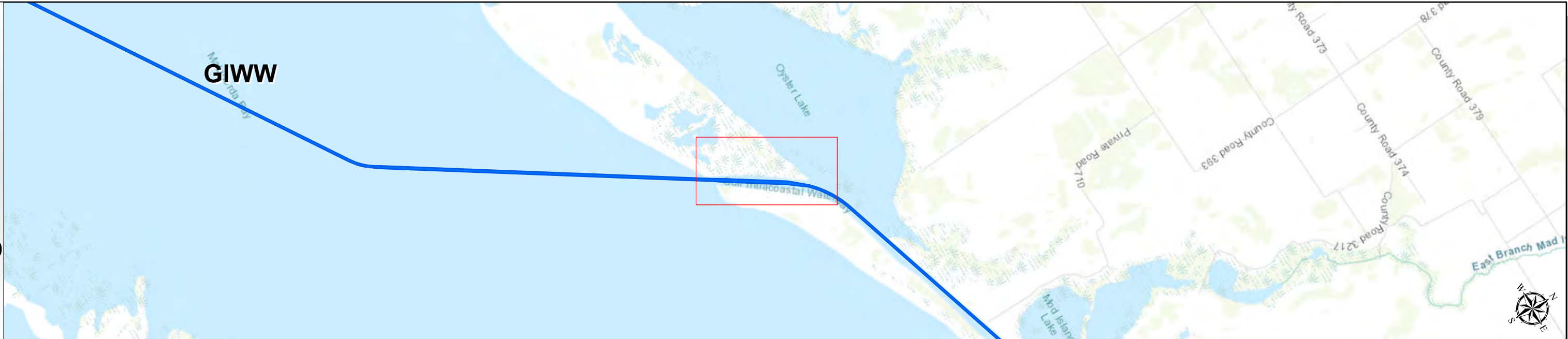
Mapped by: M3AOXPAC

Additional Imagery info:

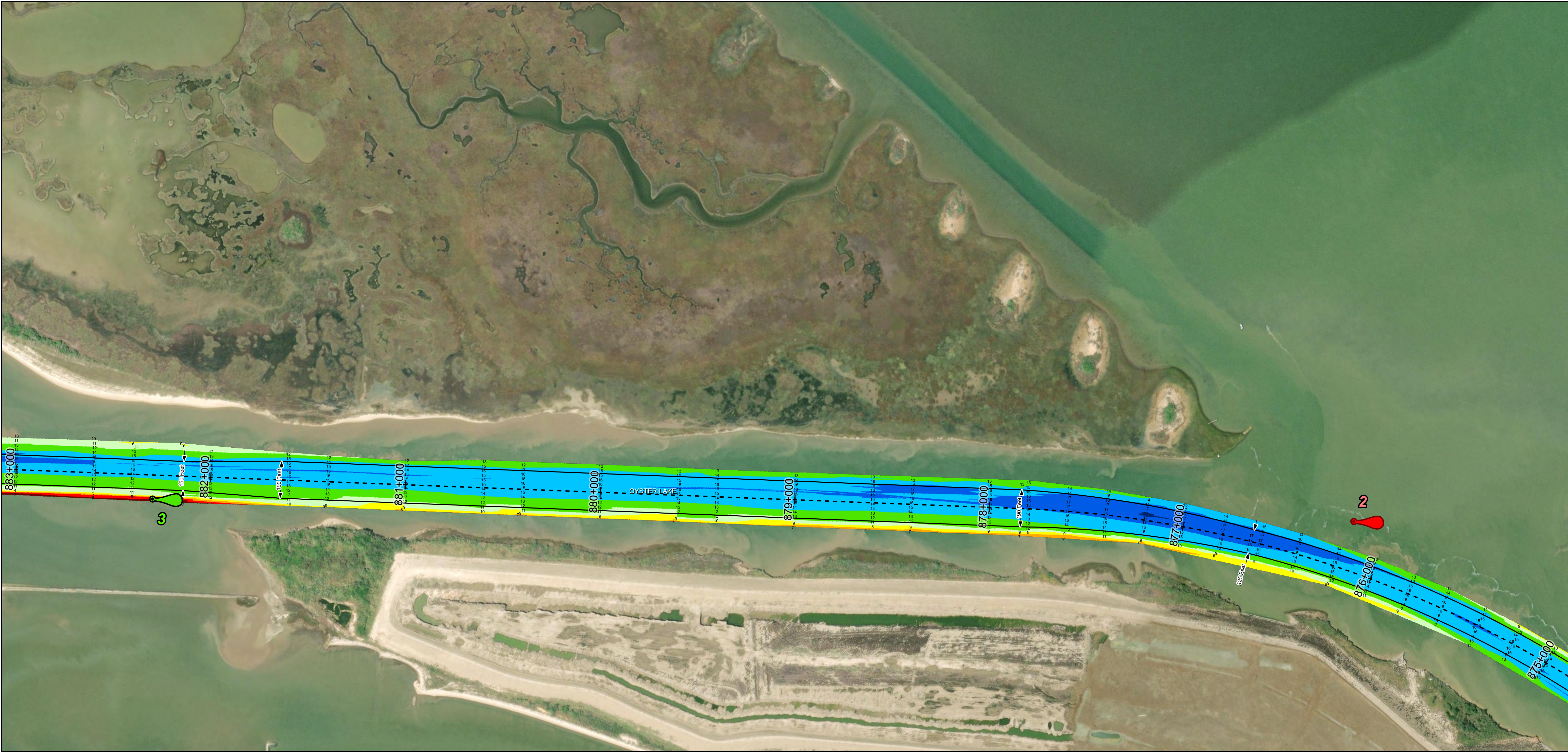
Gulf Intracoastal Waterway: Colorado River to Matagorda Bay



Regional Extent



Dredging Reach Extent



Channel Features

- Channel Center Line
- Channel Toe
- Channel Dimensions

Aids to Navigation

- Green Side Aids
- Red Side Aids
- Lights

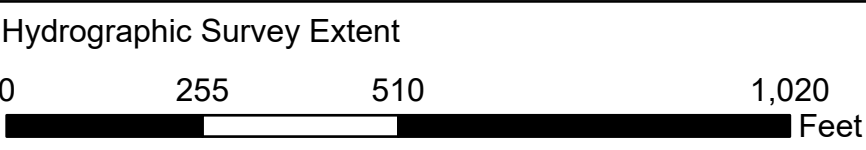
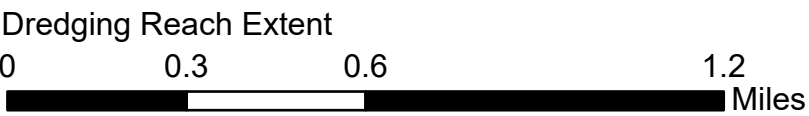
MLLW



NOTES:
1. Horizontal coordinates are referenced to Texas state plane coordinate system, south central zone nad83 survey feet.
2. Elevations are referenced to mean lower low tide (MLLW) datum.
3. This project was designed by the Galveston District of the U.S. Army Corps of Engineers. The initials and signatures and registration designations of individuals appear on these project documents within the scope of their employment as required by 47 CFR 110.1-110.12.
4. The information depicted on this survey map represents the results of surveys made on the dates indicated and can only be considered as indicating the general conditions existing at that time. These conditions are subject to rapid change due to shoaling events. A prudent mariner should not rely exclusively on the information provided here. Required by 33 CFR 209.325.
5. For the most up to date information please check our website at: <http://www.svg.usace.army.mil/Missions/Navigation/HydrographicSurveys/>
Service Layer Credits: World Topographic Map: Texas Parks & Wildlife, Esri, HERE, Garmin, INCREMENT P, USGS, METINASA, NGA, EPA, USDA
World Imagery: Maxar
World Ocean Base: Esri, GEBCO, Garmin, NaturalVue

Additional Combined Survey Dates and Stationing:
Combined survey dates 20231016_17_XC; 20240111_CS_851P000_853P000;
20240125_CS_813P800_818P800

Coordinate System: NAD 1983 StatePlane Texas South Central FIPS 4204 Feet
Projection: Lambert Conformal Conic

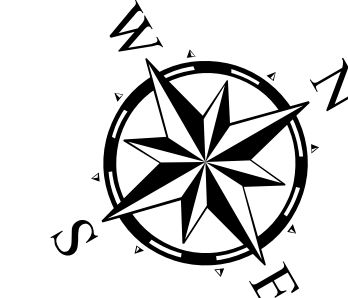


HYDROGRAPHIC SURVEY

U.S. ARMY ENGINEER DISTRICT
CORPS OF ENGINEERS
GALVESTON, TEXAS

Station: 810+000 to 901+423.55
GIWW

Colorado River to Matagorda Bay



Latest Survey Collection Date: 25 January 2024

Document Page: 10 of 13

Authorized Depth: -14ft.

Side Slope Ratio: (Rise : Run)

Website Index Number: 126

PDF Print Date: 2/6/2024

Scale: 1:3,000

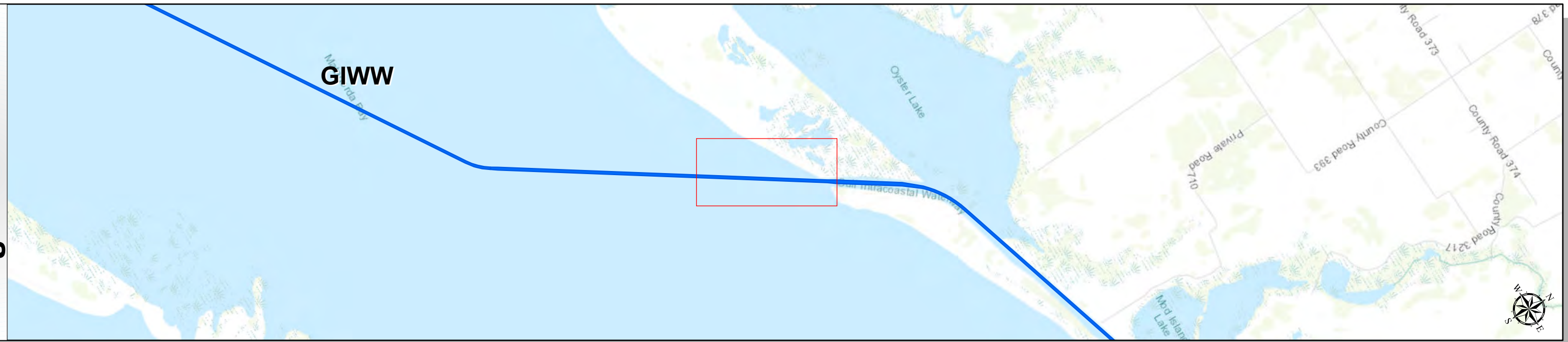
Mapped by: M3AOXPAC

Additional Imagery info:

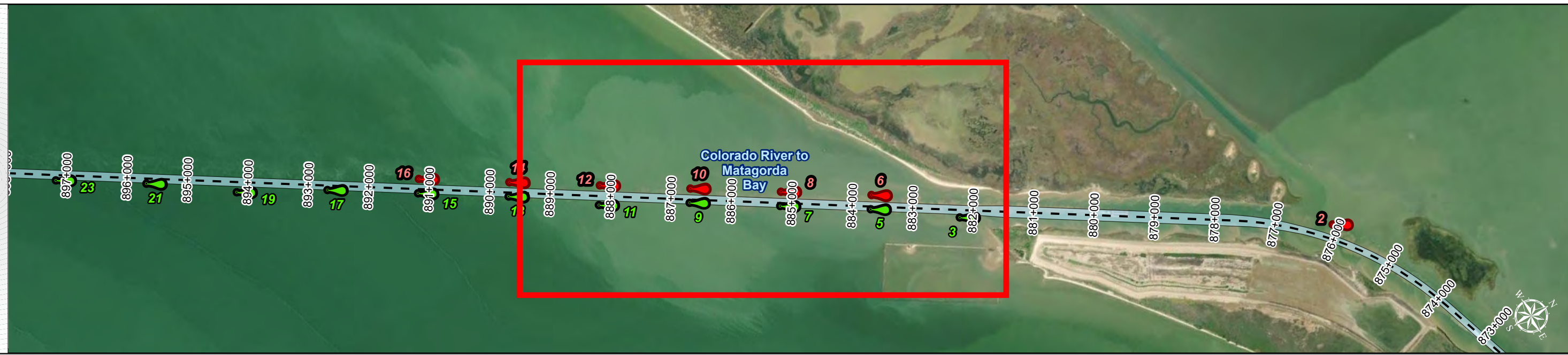
Gulf Intracoastal Waterway: Colorado River to Matagorda Bay



Regional Extent



Dredging Reach Extent

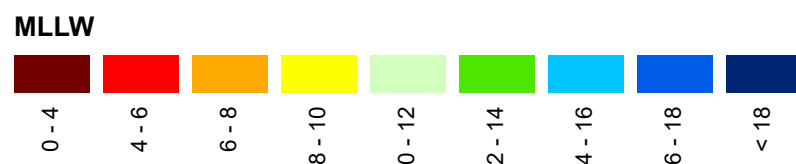


Channel Features

- Channel Center Line
- Channel Toe
- Channel Dimensions

Aids to Navigation

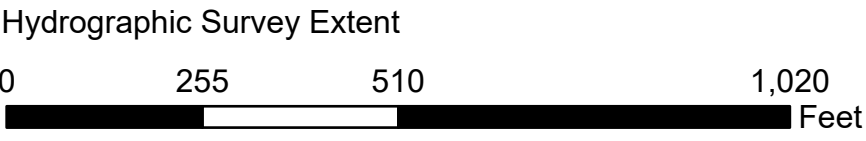
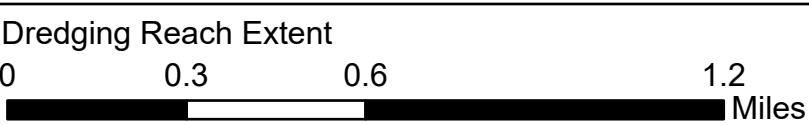
- Green Side Aids
- Red Side Aids
- Lights



NOTES:
1. Horizontal coordinates are referenced to Texas state plane coordinate system, south central zone nad83 us survey feet.
2. Elevations are referenced to mean lower low tide (MLLW) datum.
3. This project was designed by the Galveston District of the U.S. Army Corps of Engineers. The initials and signatures and registration designations of individuals appear on these project documents within the scope of their employment as required by 47 CFR 111.01-01152.
4. The information depicted on this survey map represents the results of surveys made on the dates indicated and can only be considered as indicating the general conditions existing at that time. These conditions are subject to rapid change due to shoaling events. A prudent mariner should not rely exclusively on the information provided here. Required by 33 CFR 209.325.
5. For the most up to date information please check our website at: <http://www.svg.usace.army.mil/Missions/Navigation/HydrographicSurveys/>
Service Layer Credits: World Topographic Map: Texas Parks & Wildlife, Esri, HERE, Garmin, INCREMENT P, USGS, METINASA, NGA, EPA, USDA
World Imagery: Maxar
World Ocean Base: Esri, GEBCO, Garmin, NaturalVue

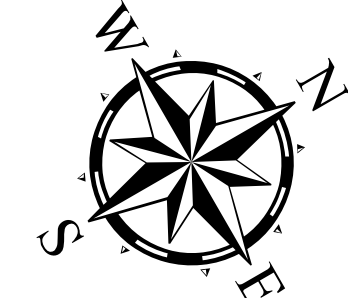
Additional Combined Survey Dates and Stationing:
Combined survey dates 20231016_17_XC; 20240111_CS_851P000_853P000;
20240125_CS_813P800_818P800

Coordinate System: NAD 1983 StatePlane Texas South Central FIPS 4204 Feet
Projection: Lambert Conformal Conic



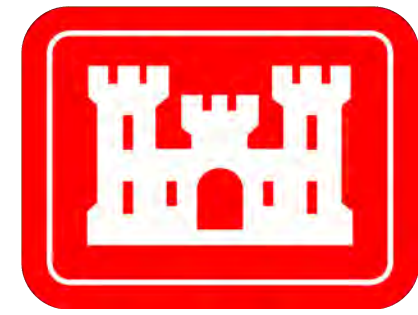
HYDROGRAPHIC SURVEY

U.S. ARMY ENGINEER DISTRICT
CORPS OF ENGINEERS
GALVESTON, TEXAS
Station: 810+000 to 901+423.55
GIWW
Colorado River to Matagorda Bay



Latest Survey Collection Date: 25 January 2024		Authorized Depth: -14ft.	
Document Page: 11 of 13	Website Index Number: 127	Side Slope Ratio: (Rise : Run)	
Scale: 1:3,000		PDF Print Date: 2/6/2024	
Mapped by: M3AOXPAC			
Additional Imagery info:			

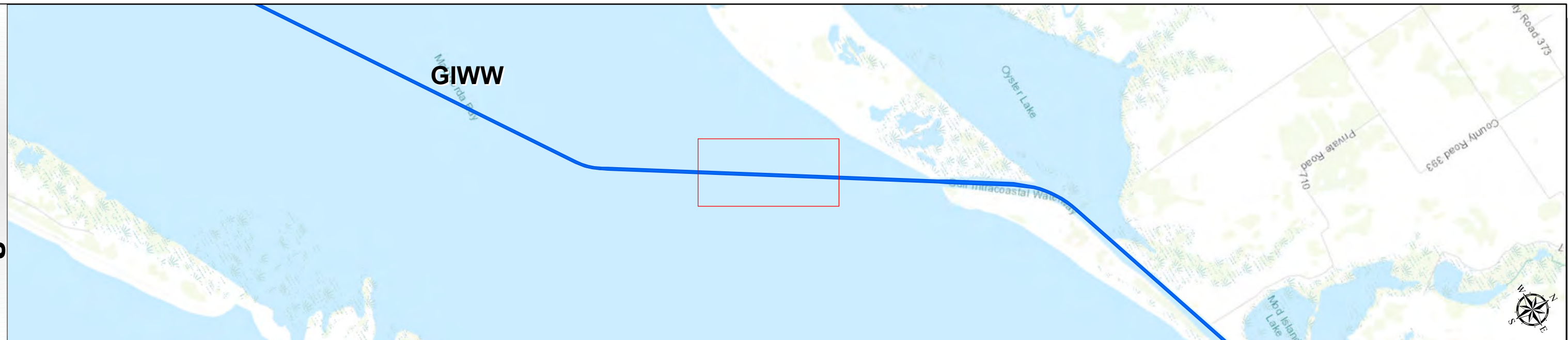
Gulf Intracoastal Waterway: Colorado River to Matagorda Bay



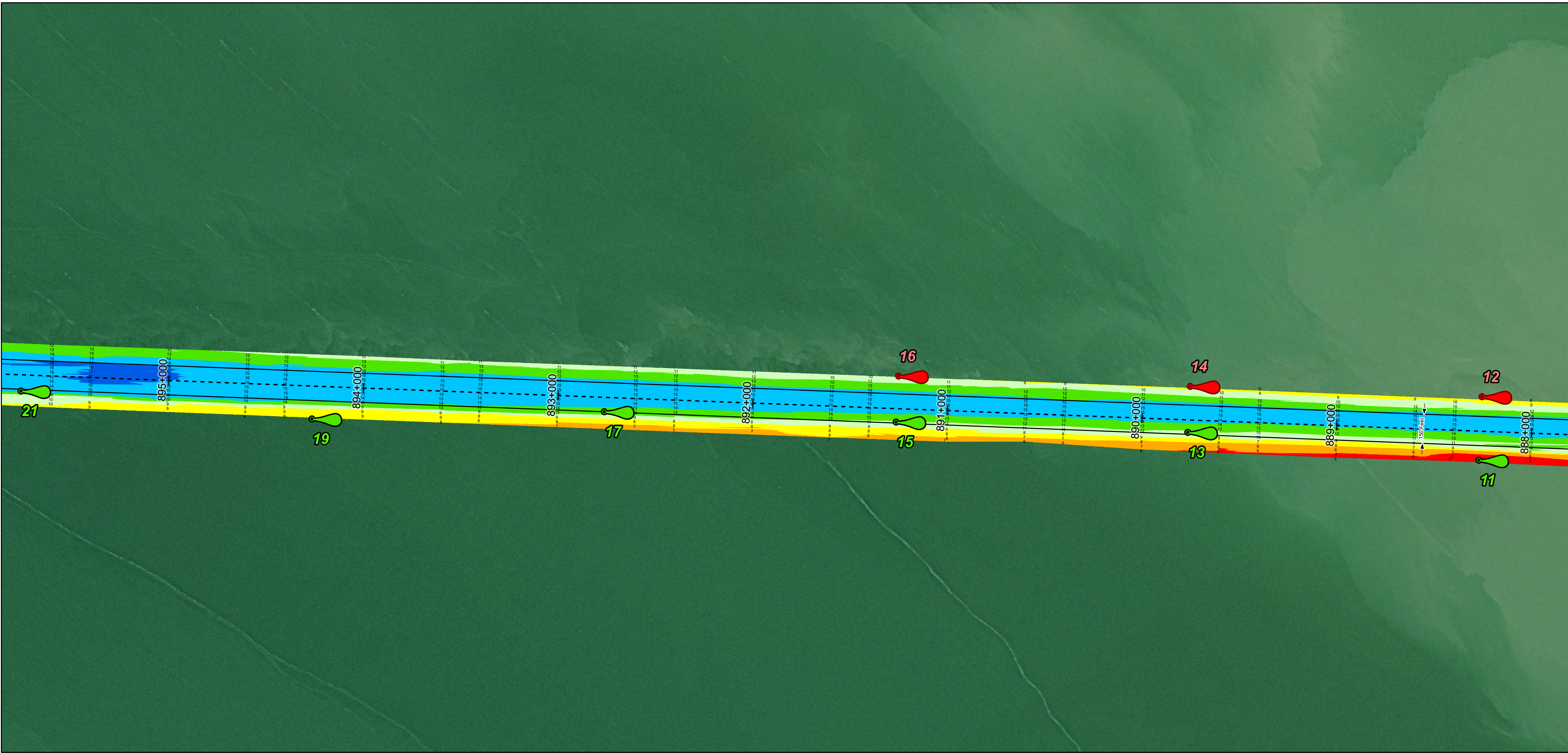
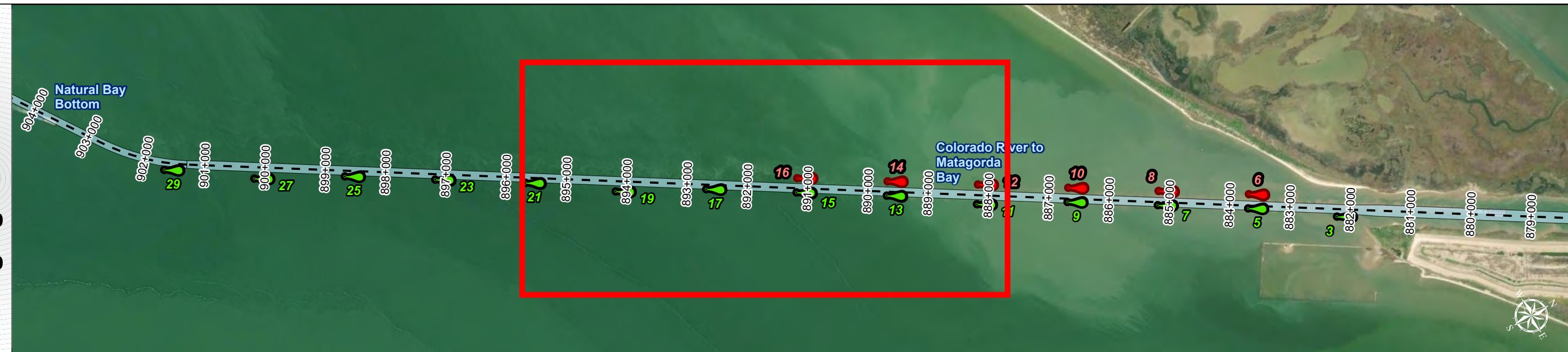
U.S. Army Corps of Engineers
Galveston District



Regional Extent



Dredging Reach Extent



Channel Features

- Channel Center Line
- Channel Toe
- Channel Dimensions

Aids to Navigation

- Green Side Aids
- Red Side Aids
- Lights

MLLW



NOTES:

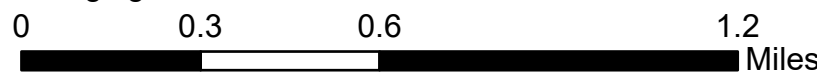
- Horizontal coordinates are referenced to Texas state plane coordinate system, south central zone nad83 us survey feet.
 - Elevations are referenced to mean lower low tide (MLLW) datum.
 - This project was designed by the Galveston District of the U.S. Army Corps of Engineers. The initials and signatures and registration designations of individuals appear on these project documents within the scope of their employment as required by 47 CFR 111.05-61152.
 - The information depicted on this survey map represents the results of surveys made on the dates indicated and can only be considered as indicating the general conditions existing at that time. These conditions are subject to rapid change due to shoaling events. A prudent mariner should not rely exclusively on the information provided here. Required by 33 CFR 209.325.
 - For the most up to date information please check our website at: <http://www.svg.usace.army.mil/Missions/Navigation/HydrographicSurveys/>
- Service Layer Credits: World Topographic Map: Texas Parks & Wildlife, Esri, HERE, Garmin, INCREMENT P, USGS, METINASA, NGA, EPA, USDA
World Imagery: Maxar
World Ocean Base: Esri, GEBCO, Garmin, NaturalVue

Additional Combined Survey Dates and Stationing:

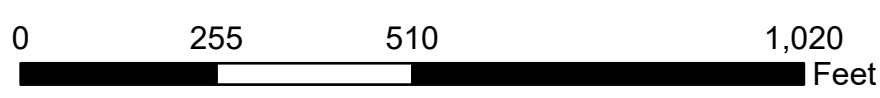
Combined survey dates 20231016_17_XC; 20240111_CS_851P000_853P000;
20240125_CS_813P800_818P800

Coordinate System: NAD 1983 StatePlane Texas South Central FIPS 4204 Feet
Projection: Lambert Conformal Conic

Dredging Reach Extent



Hydrographic Survey Extent

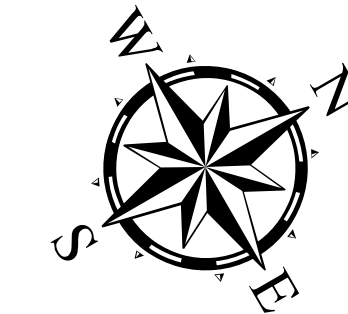


HYDROGRAPHIC SURVEY

U.S. ARMY ENGINEER DISTRICT
CORPS OF ENGINEERS
GALVESTON, TEXAS

Station: 810+000 to 901+423.55
GIWW

Colorado River to Matagorda Bay



Latest Survey Collection Date: 25 January 2024

Document Page: 12 of 13

Website Index Number: 128

Scale: 1:3,000

Mapped by: M3AOXPAC

Additional Imagery info:

Authorized Depth: -14ft.

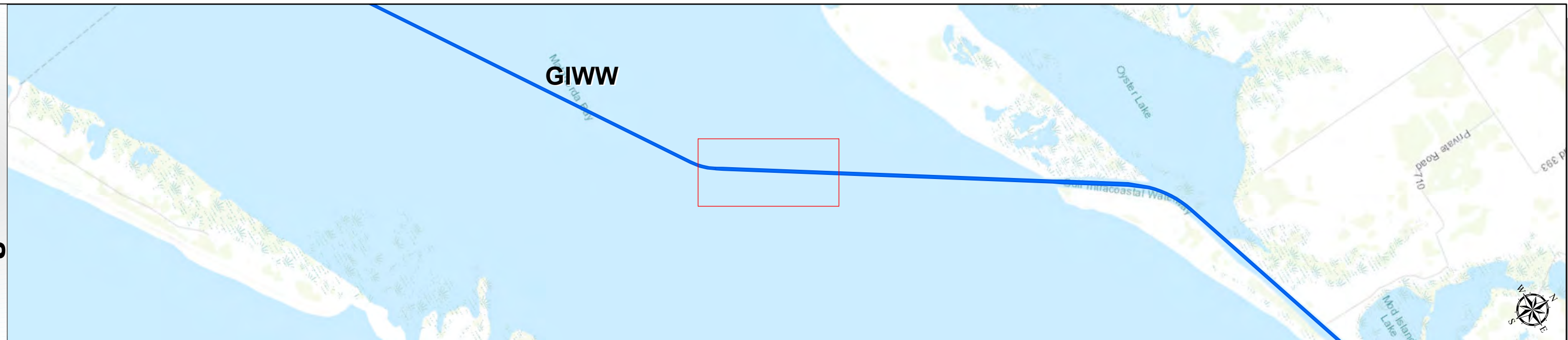
Side Slope Ratio: (Rise : Run)

PDF Print Date: 2/6/2024

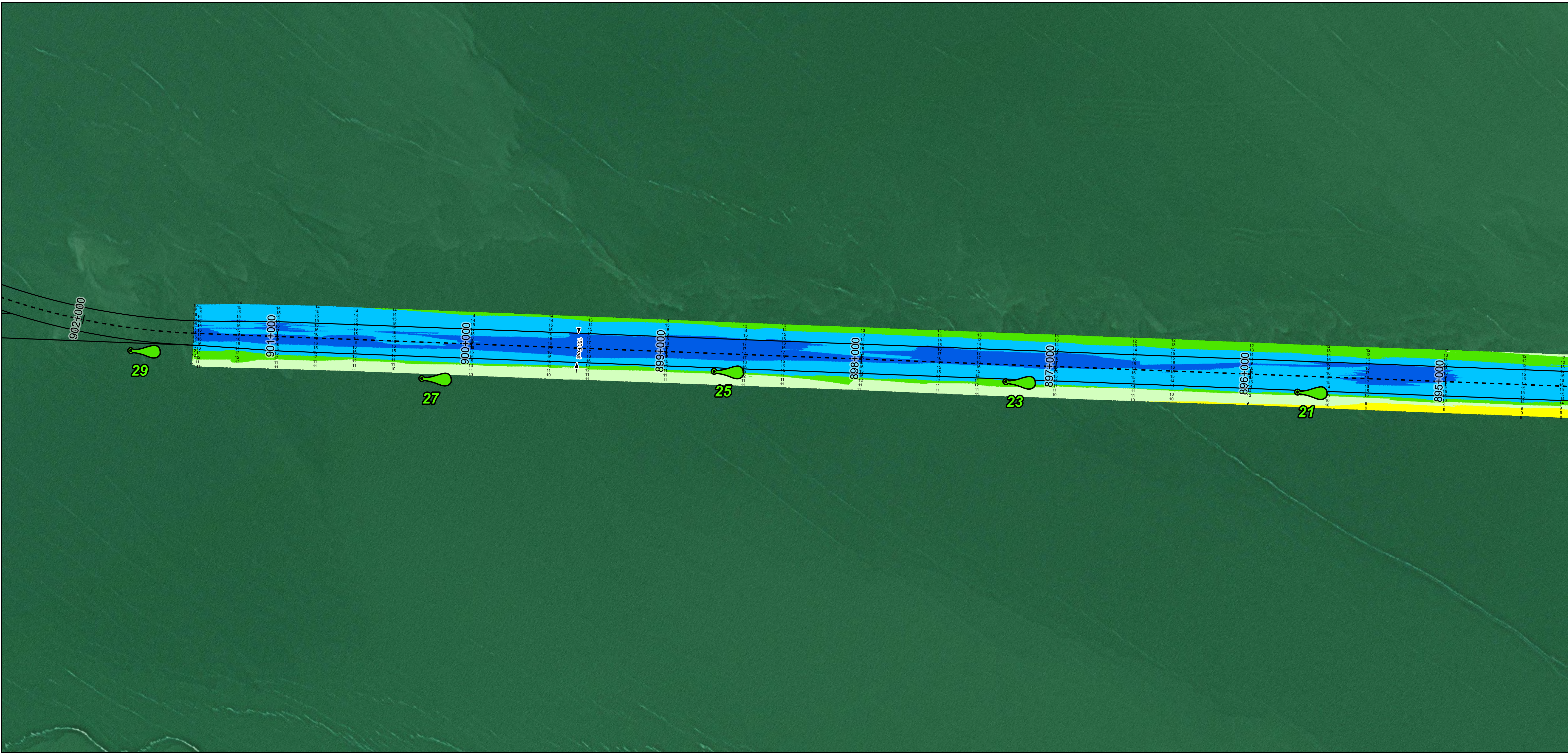
Gulf Intracoastal Waterway: Colorado River to Matagorda Bay



Regional Extent



Dredging Reach Extent



Channel Features

- Channel Center Line
- Channel Toe
- Channel Dimensions

Aids to Navigation

- Green Side Aids
- Red Side Aids
- Lights

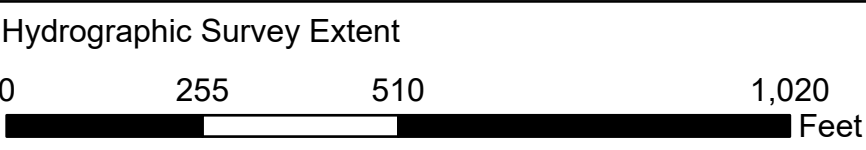
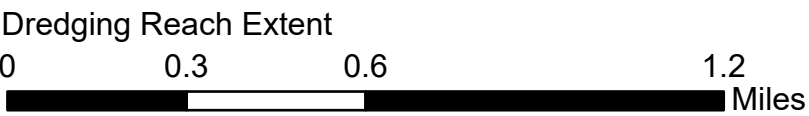
MLLW



NOTES:
1. Horizontal coordinates are referenced to Texas state plane coordinate system, south central zone nad83 us survey feet.
2. Elevations are referenced to mean lower low tide (MLLW) datum.
3. This project was designed by the Galveston District of the U.S. Army Corps of Engineers. The initials and signatures and registration designations of individuals appear on these project documents within the scope of their employment as required by 47 CFR 111.11-111.12.
4. The information depicted on this survey map represents the results of surveys made on the dates indicated and can only be considered as indicating the general conditions existing at that time. These conditions are subject to rapid change due to shoaling events. A prudent mariner should not rely exclusively on the information provided here. Required by 33 CFR 209.325.
5. For the most up to date information please check our website at: <http://www.svg.usace.army.mil/Missions/Navigation/HydrographicSurveys/>
Service Layer Credits: World Topographic Map: Texas Parks & Wildlife, Esri, HERE, Garmin, INCREMENT P, USGS, METINASA, NGA, EPA, USDA
World Imagery: Maxar
World Ocean Base: Esri, GEBCO, Garmin, NaturalVue

Additional Combined Survey Dates and Stationing:
Combined survey dates 20231016_17_XC; 20240111_CS_851P000_853P000;
20240125_CS_813P800_818P800

Coordinate System: NAD 1983 StatePlane Texas South Central FIPS 4204 Feet
Projection: Lambert Conformal Conic

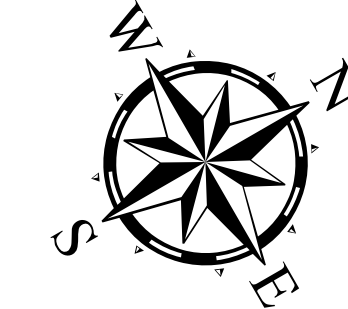


HYDROGRAPHIC SURVEY

U.S. ARMY ENGINEER DISTRICT
CORPS OF ENGINEERS
GALVESTON, TEXAS

Station: 810+000 to 901+423.55
GIWW

Colorado River to Matagorda Bay



Latest Survey Collection Date: 25 January 2024

Document Page: 13 of 13

Website Index Number: 129

Scale: 1:3,000

Mapped by: M3AOXPAC

Additional Imagery info:

Authorized Depth: -14ft.

Side Slope Ratio: (Rise : Run)

PDF Print Date: 2/6/2024