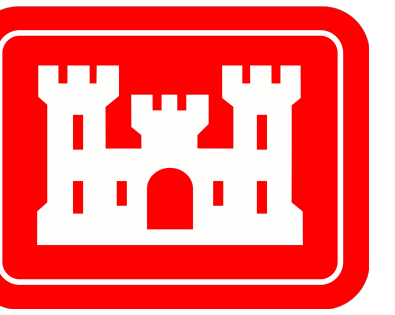
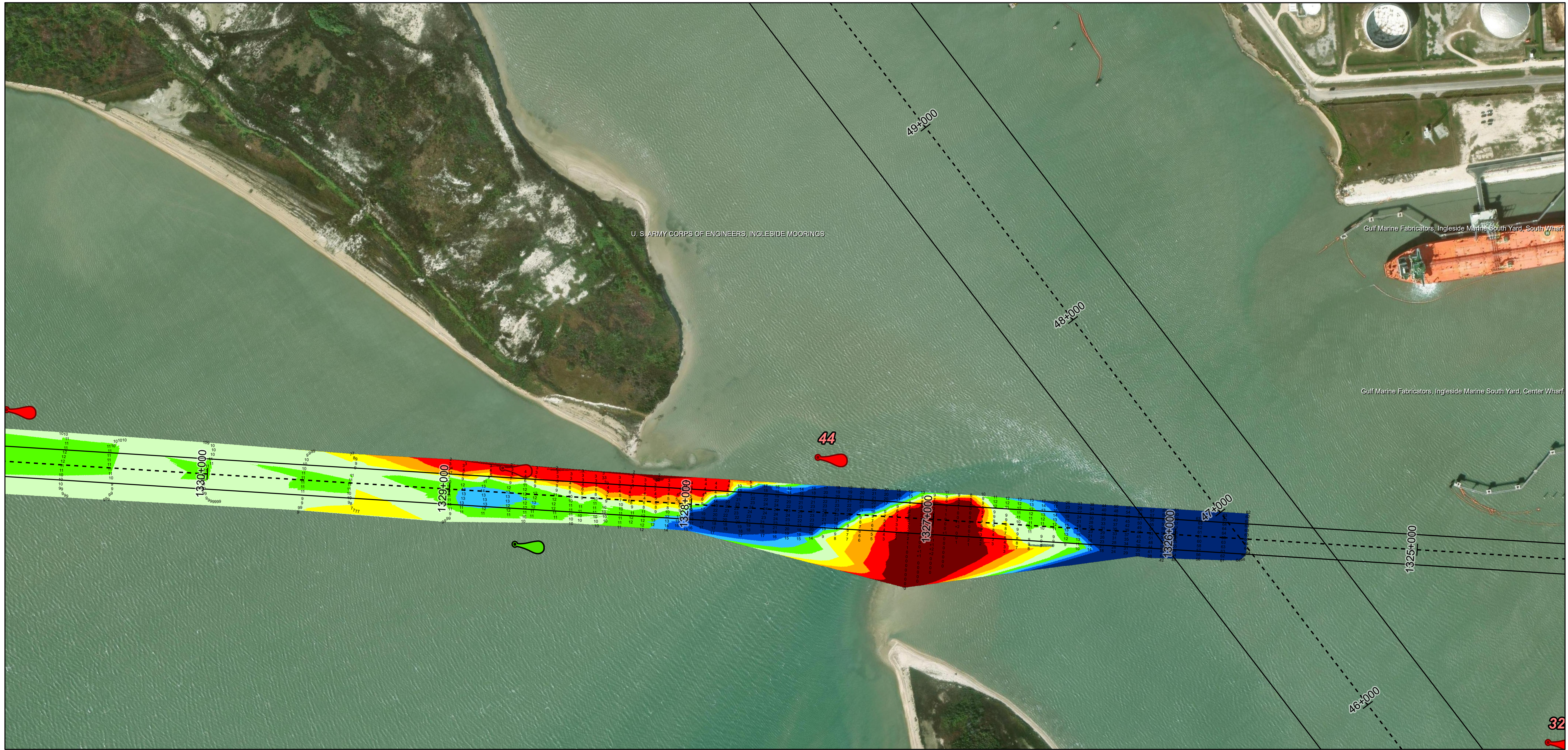
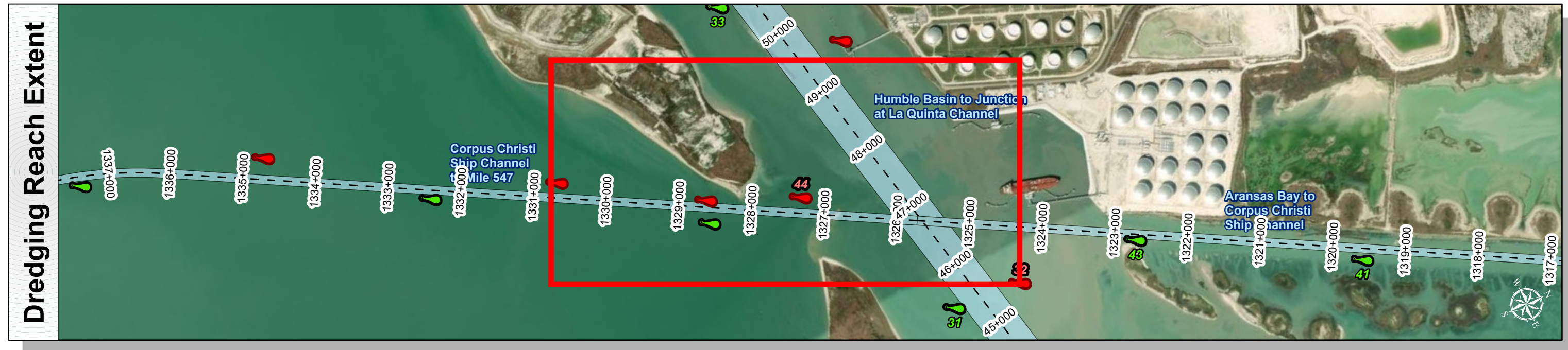
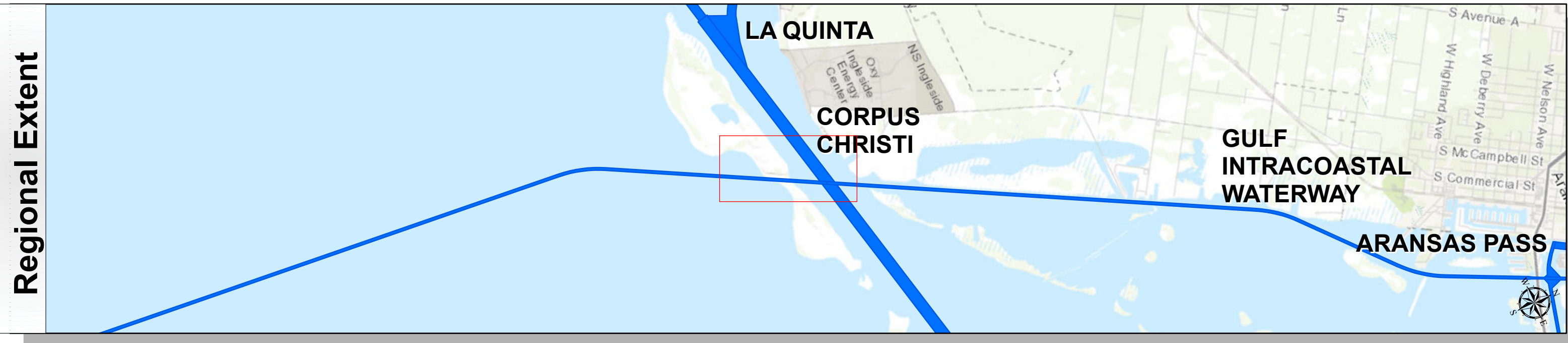
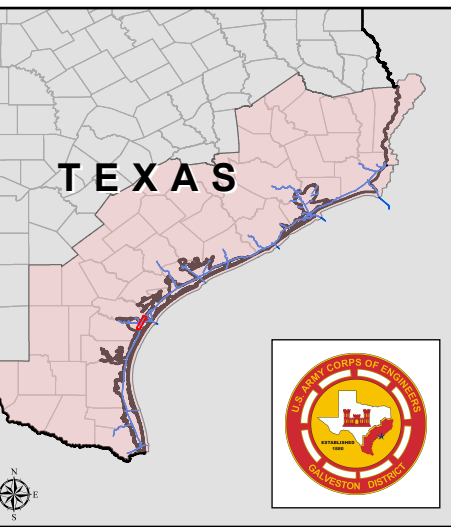


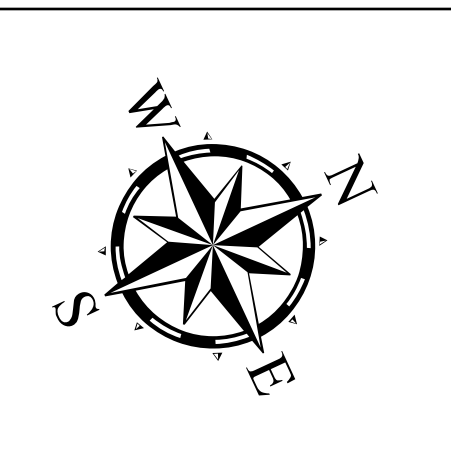
Gulf Intracoastal Waterway: Corpus Christi Ship Channel to Mile 547



U.S. Army Corps of Engineers
Galveston District



Latest Survey Collection Date: 06 June 2024	Authorized Depth: -13ft.
Document Page: 1 of 10	Side Slope Ratio: (Rise : Run)
Scale: 1:2,400	PDF Print Date: 6/11/2024
Mapped by: m3odnmhg	
Additional Imagery info:	
Website Index Number: 195	



Channel Features

- Channel Center Line
- Channel Toe
- ↔ Channel Dimensions

Aids to Navigation

- Green Side Aids
- Red Side Aids
- Lights

MLLW

0 - 3	3 - 5	5 - 7	7 - 9	9 - 11	11 - 13	13 - 15	15 - 17	< 17
-------	-------	-------	-------	--------	---------	---------	---------	------

NOTES:

- Horizontal coordinates are referenced to Texas state plane coordinate system, south central zone nad83 us survey feet.
- Elevations are referenced to mean lower low tide (MLLW) datum.
- This project was designed by the Galveston District of the U.S. Army Corps of Engineers. The initials and signatures and registration designations of individuals appear on these project documents within the scope of their employment as required by 47 CFR 111.0-18152.
- The information depicted on this survey map represents the results of surveys made on the dates indicated and can only be considered as indicating the general conditions existing at that time. These conditions are subject to rapid change due to shoaling events. A prudent mariner should not rely exclusively on the information provided here. Required by 33 CFR 209.325
- For the most up to date information please check our website at: <http://www.svg.usace.army.mil/Missions/Navigation/HydrographicSurveys/>

Service Layer Credits: World Topographic Map; Texas Parks & Wildlife; Esri; HERE; Garmin; INCREMENT P; USGS; METINASA; NGA; EPA; USDA
World Imagery: Maxar; Microsoft
World Imagery: Maxar

Additional Combined Survey Dates and Stationing:
COMB_SURV_INFO_HERE

Coordinate System: NAD 1983 StatePlane Texas South FIPS 4205 Feet
Projection: Lambert Conformal Conic

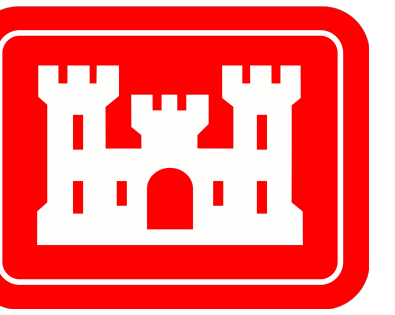
Dredging Reach Extent

Hydrographic Survey Extent

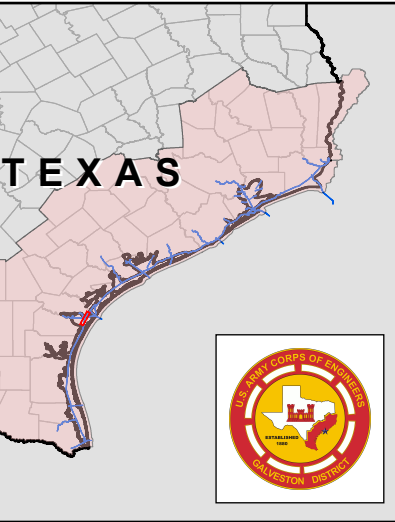
HYDROGRAPHIC SURVEY
U.S. ARMY ENGINEER DISTRICT
CORPS OF ENGINEERS
GALVESTON, TEXAS

Station: 1325+800 to 1368+860.93
GULF INTRACOASTAL WATERWAY
Corpus Christi Ship Channel to Mile 547

Gulf Intracoastal Waterway: Corpus Christi Ship Channel to Mile 547



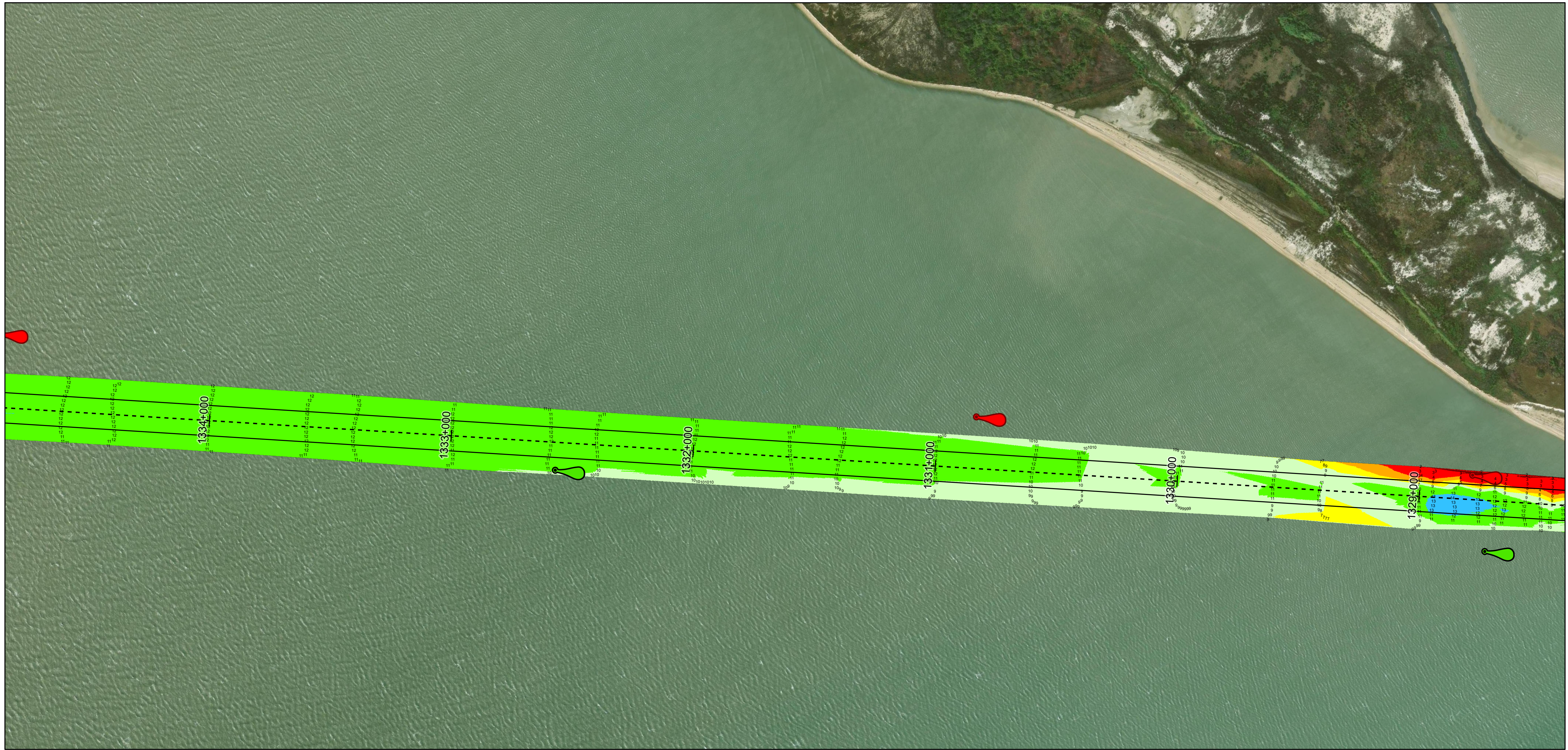
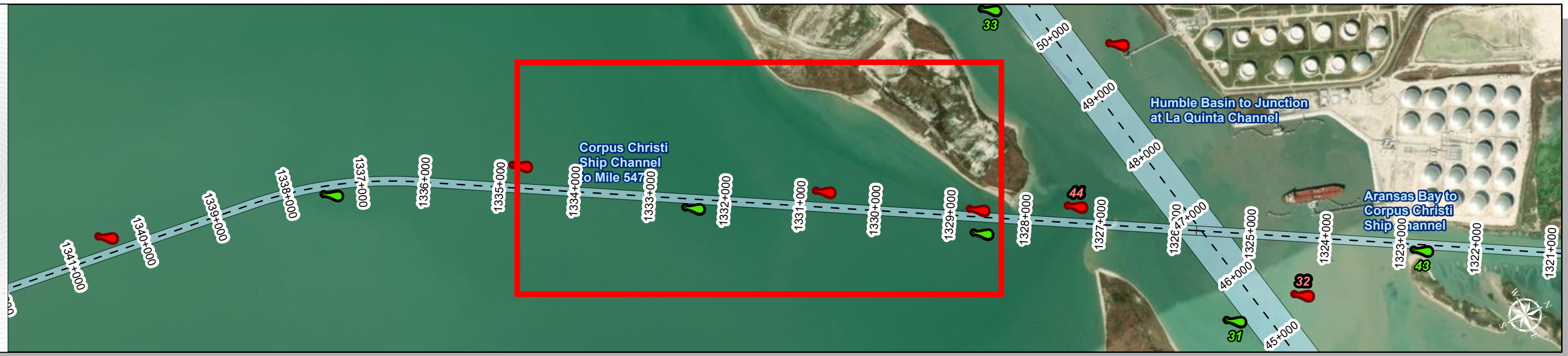
U.S. Army Corps of Engineers
Galveston District



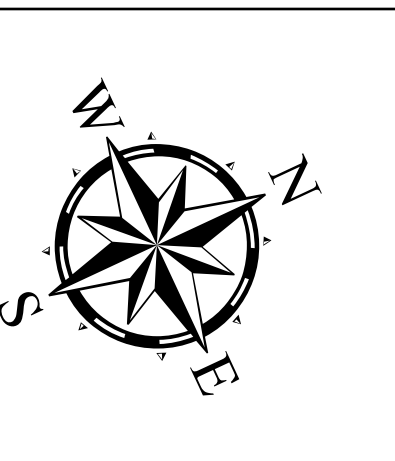
Regional Extent



Dredging Reach Extent



Latest Survey Collection Date: 06 June 2024	Authorized Depth: -13ft.
Document Page: 2 of 10	Side Slope Ratio: (Rise : Run)
Scale: 1:2,400	PDF Print Date: 6/11/2024
Mapped by: m3odnmhg	
Additional Imagery info:	



Channel Features

- Channel Center Line
- Channel Toe
- ↔ Channel Dimensions

Aids to Navigation

- Green Side Aids
- Red Side Aids
- Lights

MLLW

0 - 3	3 - 5	5 - 7	7 - 9	9 - 11	11 - 13	13 - 15	15 - 17	< 17
-------	-------	-------	-------	--------	---------	---------	---------	------

NOTES:

- Horizontal coordinates are referenced to Texas state plane coordinate system, south central zone nad83 us survey feet.
- Elevations are referenced to mean lower low tide (MLLW) datum.
- This project was designed by the Galveston District of the U.S. Army Corps of Engineers. The initials and signatures and registration designations of individuals appear on these project documents within the scope of their employment as required by 47 CFR 119.41-41.52.
- The information depicted on this survey map represents the results of surveys made on the dates indicated and can only be considered as indicating the general conditions existing at that time. These conditions are subject to rapid change due to shoaling events. A prudent mariner should not rely exclusively on the information provided here. Required by 33 CFR 209.325.
- For the most up to date information please check our website at: <http://www.svg.usace.army.mil/Missions/Navigation/HydrographicSurveys/>

Service Layer Credits: World Topographic Map; Texas Parks & Wildlife; Esri; HERE; Garmin; INCREMENT P; USGS; METI/NASA; NGA; EPA; USDA
World Imagery: Maxar; Microsoft
World Imagery: Maxar

Additional Combined Survey Dates and Stationing:
COMB_SURV_INFO_HERE

Coordinate System: NAD 1983 StatePlane Texas South FIPS 4205 Feet
Projection: Lambert Conformal Conic

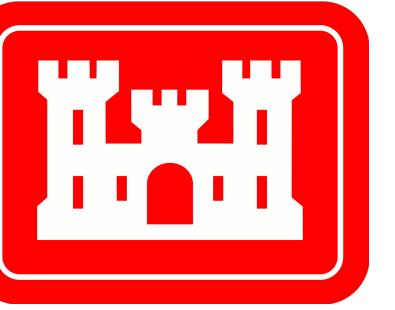
Dredging Reach Extent

Hydrographic Survey Extent

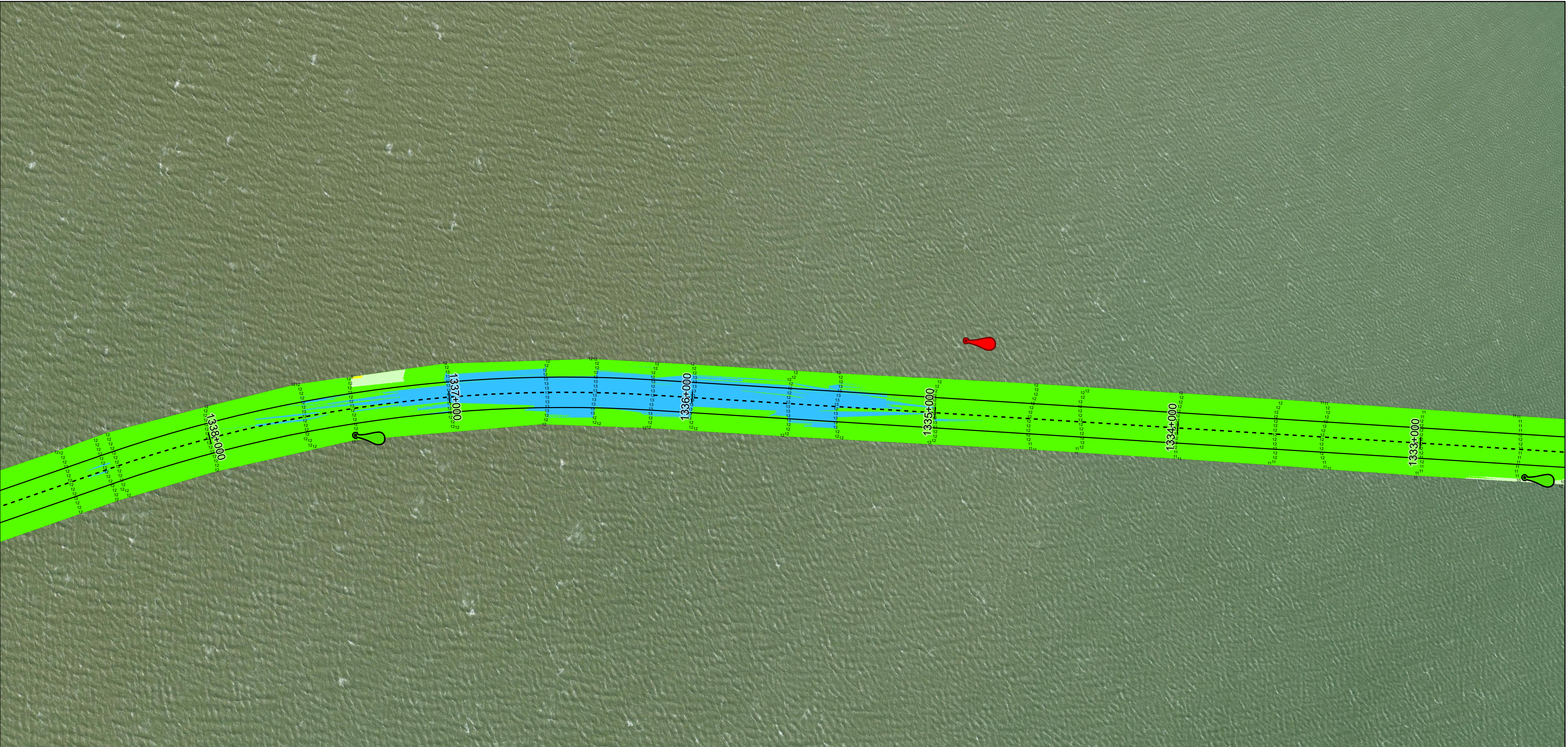
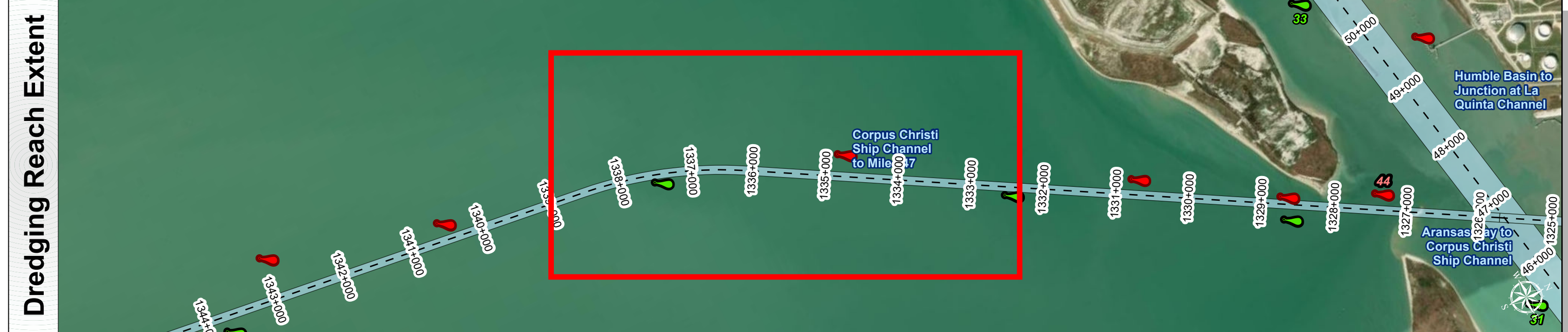
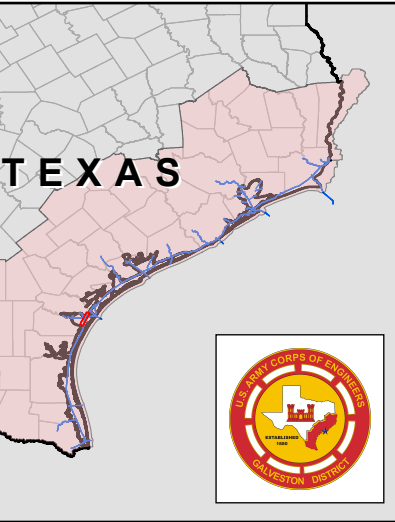
HYDROGRAPHIC SURVEY
U.S. ARMY ENGINEER DISTRICT
CORPS OF ENGINEERS
GALVESTON, TEXAS

Station: 1325+800 to 1368+860.93
GULF INTRACOASTAL WATERWAY
Corpus Christi Ship Channel to Mile 547

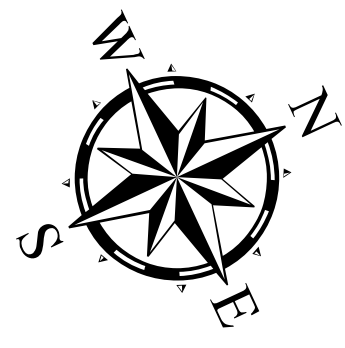
Gulf Intracoastal Waterway: Corpus Christi Ship Channel to Mile 547



U.S. Army Corps of Engineers
Galveston District



Latest Survey Collection Date: 06 June 2024	Authorized Depth: -13ft.
Document Page: 3 of 10	Side Slope Ratio: (Rise : Run)
Scale: 1:2,400	PDF Print Date: 6/11/2024
Mapped by: m3odnmhg	
Website Index Number: 197	
Additional Imagery info:	



Channel Features

- Channel Center Line
- Channel Toe
- ↔ Channel Dimensions

Aids to Navigation

- Green Side Aids
- Red Side Aids
- Lights

MLLW

0 - 3	3 - 5	5 - 7	7 - 9	9 - 11	11 - 13	13 - 15	15 - 17	< 17
-------	-------	-------	-------	--------	---------	---------	---------	------

NOTES:

- Horizontal coordinates are referenced to Texas state plane coordinate system, south central zone nad83 us survey feet.
- Elevations are referenced to mean lower low tide (MLLW) datum.
- This project was designed by the Galveston District of the U.S. Army Corps of Engineers. The initials and signatures and registration designations of individuals appear on these project documents within the scope of their employment as required by 47 CFR 110.1-8152.
- The information depicted on this survey map represents the results of surveys made on the dates indicated and can only be considered as indicating the general conditions existing at that time. These conditions are subject to rapid change due to shoaling events. A prudent mariner should not rely exclusively on the information provided here. Required by 33 CFR 209.325
- For the most up to date information please check our website at: <http://www.svg.usace.army.mil/Missions/Navigation/HydrographicSurveys/>

Service Layer Credits: World Topographic Map: Texas Parks & Wildlife, Esri, HERE, Garmin, INCREMENT P, USGS, METINASA, NGA, EPA, USDA
World Imagery: Maxar, Microsoft
World Imagery: Maxar

Additional Combined Survey Dates and Stationing:
COMB_SURV_INFO_HERE

Coordinate System: NAD 1983 StatePlane Texas South FIPS 4205 Feet
Projection: Lambert Conformal Conic

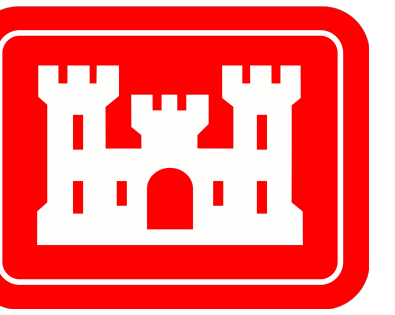
Dredging Reach Extent

Hydrographic Survey Extent

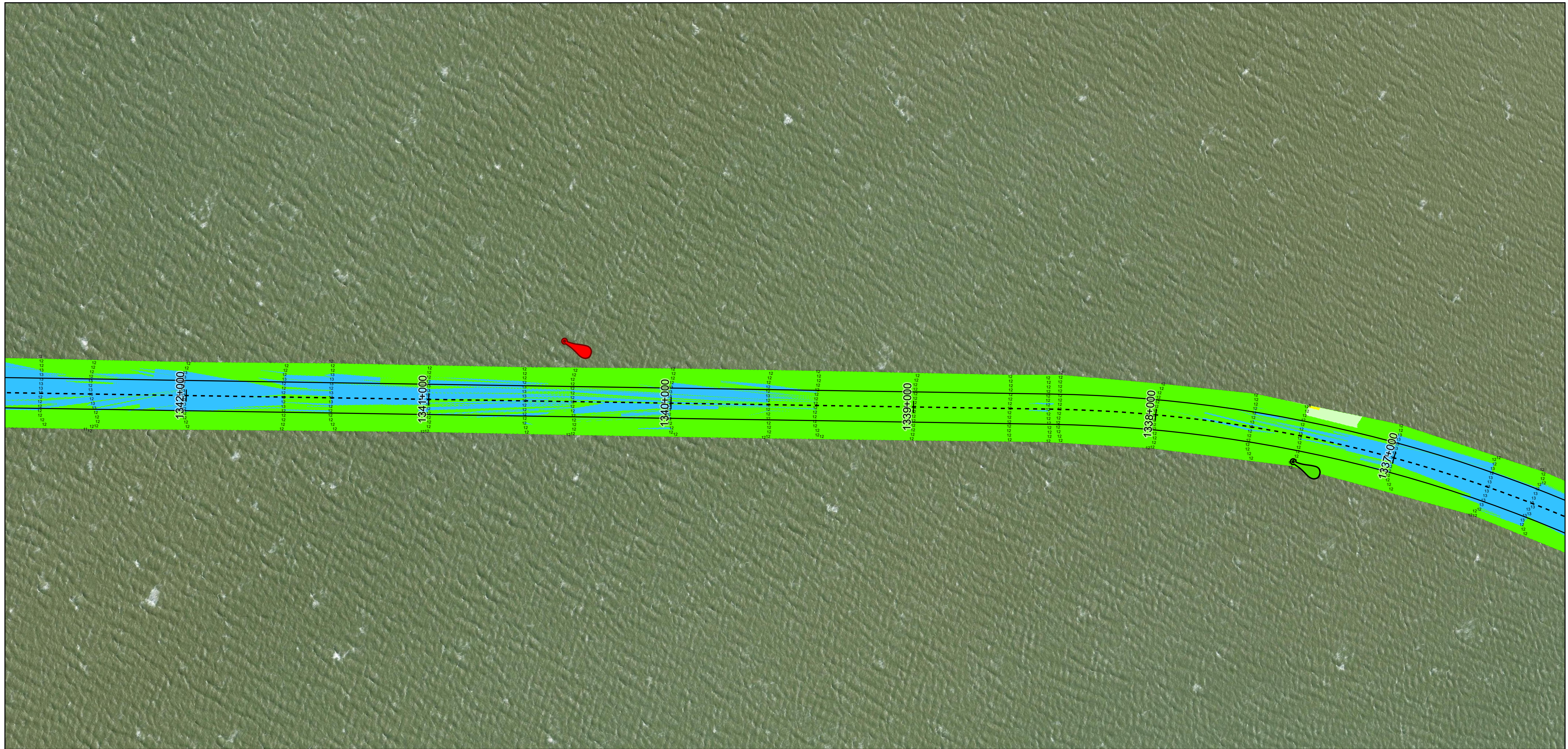
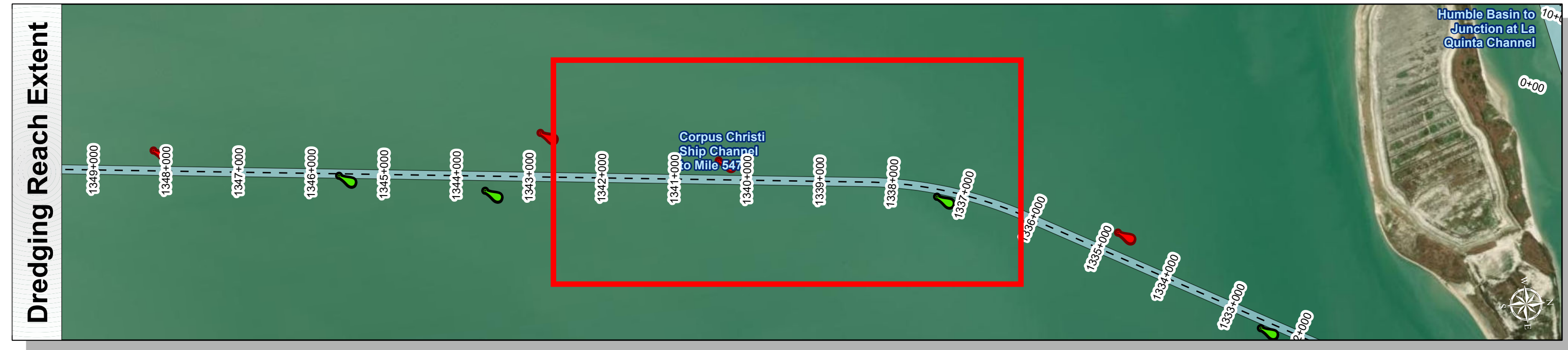
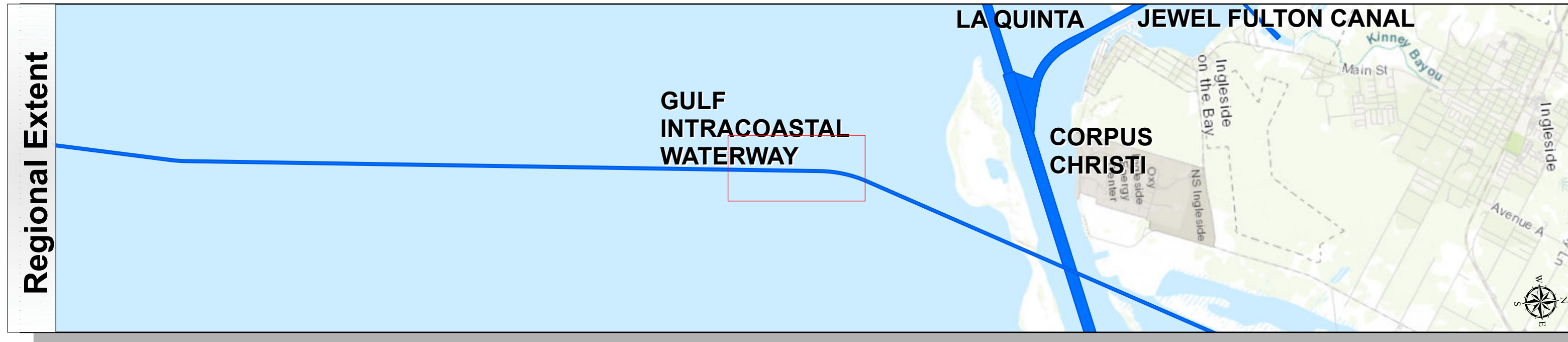
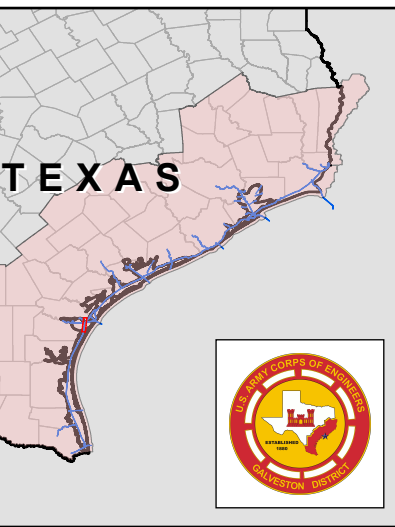
HYDROGRAPHIC SURVEY
U.S. ARMY ENGINEER DISTRICT
CORPS OF ENGINEERS
GALVESTON, TEXAS

Station: 1325+800 to 1368+860.93
GULF INTRACOASTAL WATERWAY
Corpus Christi Ship Channel to Mile 547

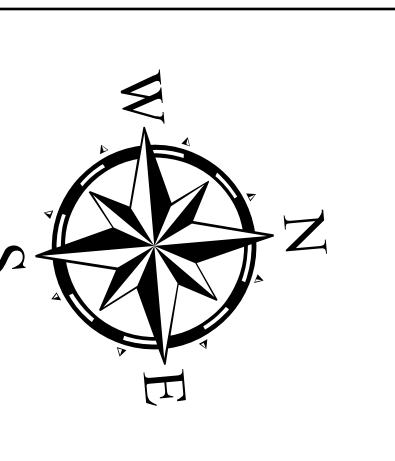
Gulf Intracoastal Waterway: Corpus Christi Ship Channel to Mile 547



U.S. Army Corps of Engineers
Galveston District



Latest Survey Collection Date: 06 June 2024	Authorized Depth: -13ft.
Document Page: 4 of 10	Side Slope Ratio: (Rise : Run)
Scale: 1:2,400	PDF Print Date: 6/11/2024
Mapped by: m3odnmhg	
Additional Imagery info:	



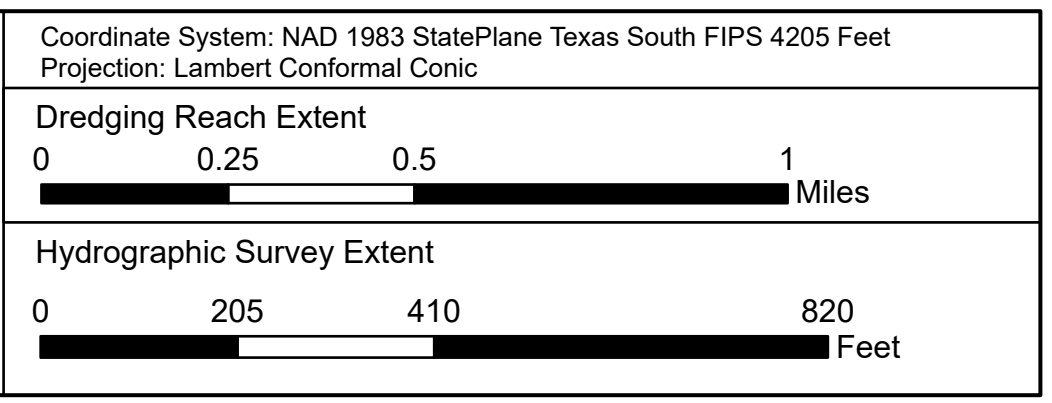
Channel Features	Aids to Navigation	MLLW
<ul style="list-style-type: none"> --- Channel Center Line — Channel Toe ↔ Channel Dimensions 	<ul style="list-style-type: none"> Green Side Aids Red Side Aids Lights 	<ul style="list-style-type: none"> 0 - 3 3 - 5 5 - 7 7 - 9 9 - 11 11 - 13 13 - 15 15 - 17 < 17

NOTES:

- Horizontal coordinates are referenced to Texas state plane coordinate system, south central zone nad83 us survey feet.
- Elevations are referenced to mean lower low tide (MLLW) datum.
- This project was designed by the Galveston District of the U.S. Army Corps of Engineers. The initials and signatures and registration designations of individuals appear on these project documents within the scope of their employment as required by 47 CFR 119.1-61.52.
- The information depicted on this survey map represents the results of surveys made on the dates indicated and can only be considered as indicating the general conditions existing at that time. These conditions are subject to rapid change due to shoaling events. A prudent mariner should not rely exclusively on the information provided here. Required by 33 CFR 209.225
- For the most up to date information please check our website at: <http://www.svg.usace.army.mil/Missions/Navigation/HydrographicSurveys/>

Service Layer Credits: World Topographic Map: Texas Parks & Wildlife, Esri, HERE, Garmin, INCREMENT P, USGS, METINASA, NGA, EPA, USDA
World Imagery: Maxar, Microsoft
World Imagery: Maxar

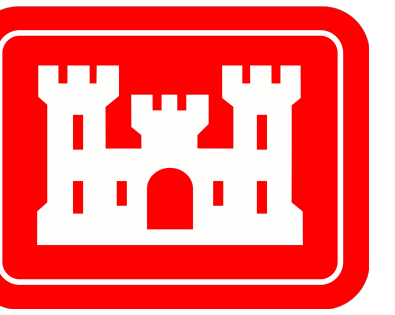
Additional Combined Survey Dates and Stationing:
COMB_SURV_INFO_HERE



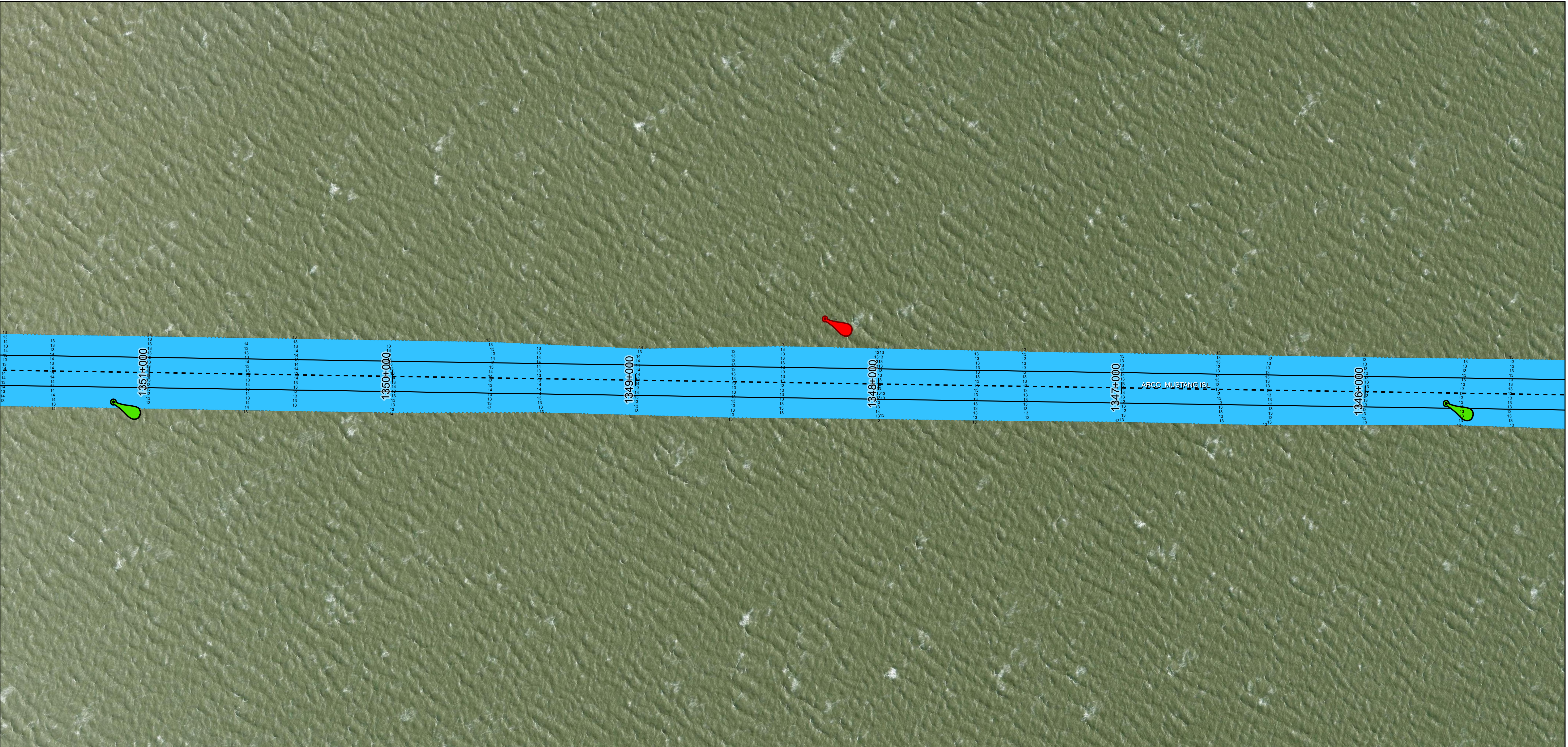
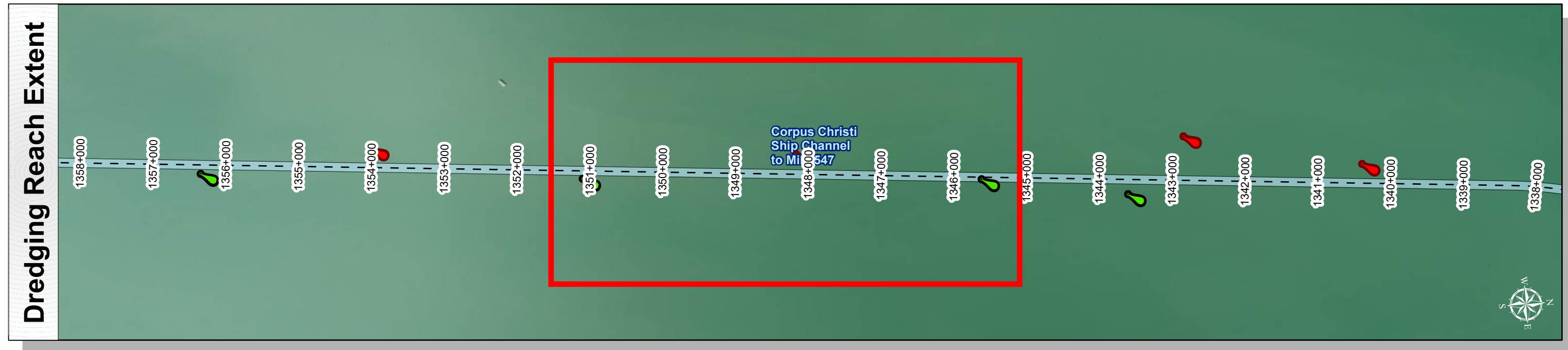
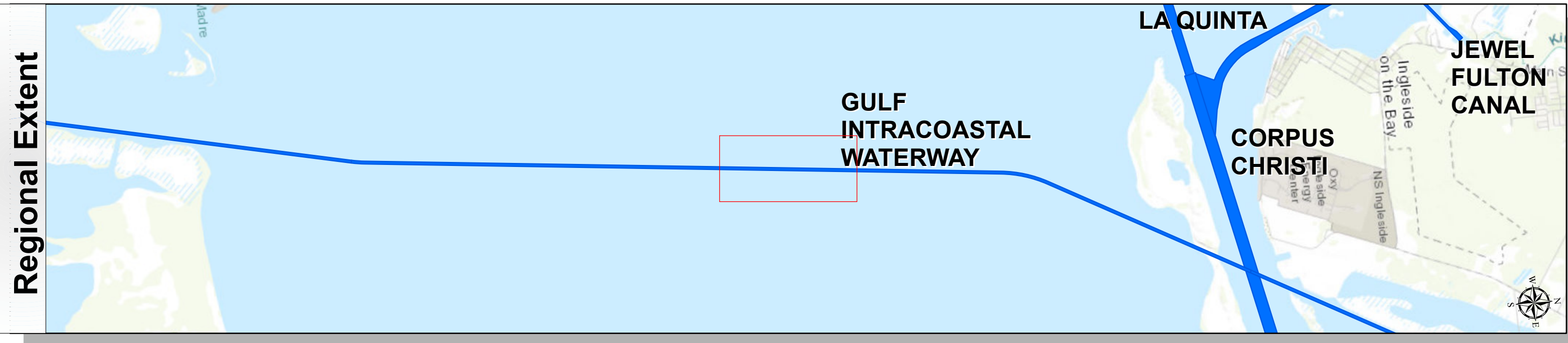
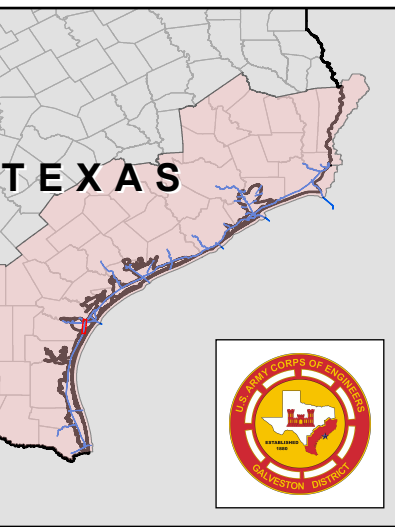
HYDROGRAPHIC SURVEY
U.S. ARMY ENGINEER DISTRICT
CORPS OF ENGINEERS
GALVESTON, TEXAS

Station: 1325+800 to 1368+860.93
GULF INTRACOASTAL WATERWAY
Corpus Christi Ship Channel to Mile 547

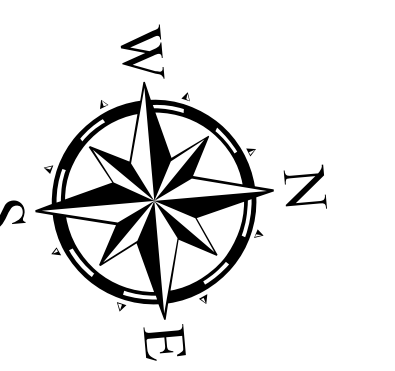
Gulf Intracoastal Waterway: Corpus Christi Ship Channel to Mile 547



U.S. Army Corps of Engineers
Galveston District



Latest Survey Collection Date: 06 June 2024	Authorized Depth: -13ft.
Document Page: 6 of 10	Side Slope Ratio: (Rise : Run)
Scale: 1:2,400	PDF Print Date: 6/11/2024
Mapped by: m3odnmhg	
Additional Imagery info:	



Channel Features

- Channel Center Line
- Channel Toe
- ↔ Channel Dimensions

Aids to Navigation

- Green Side Aids
- Red Side Aids
- Lights

MLLW

0 - 3	3 - 5	5 - 7	7 - 9	9 - 11	11 - 13	13 - 15	15 - 17	< 17
-------	-------	-------	-------	--------	---------	---------	---------	------

NOTES:

- Horizontal coordinates are referenced to Texas state plane coordinate system, south central zone nad83 us survey feet.
- Elevations are referenced to mean lower low tide (MLLW) datum.
- This project was designed by the Galveston District of the U.S. Army Corps of Engineers. The initials and signatures and registration designations of individuals appear on these project documents within the scope of their employment as required by 47 CFR 117.1-41.52.
- The information depicted on this survey map represents the results of surveys made on the dates indicated and can only be considered as indicating the general conditions existing at that time. These conditions are subject to rapid change due to shoaling events. A prudent mariner should not rely exclusively on the information provided here. Required by 33 CFR 209.225.
- For the most up to date information please check our website at: <http://www.svg.usace.army.mil/Missions/Navigation/HydrographicSurveys/>

Service Layer Credits: World Topographic Map; Texas Parks & Wildlife; Esri; HERE; Garmin; INCREMENT P; USGS; METINASA; NGA; EPA; USDA
World Imagery: Maxar; Microsoft
World Imagery: Maxar

Additional Combined Survey Dates and Stationing:
COMB_SURV_INFO_HERE

Coordinate System: NAD 1983 StatePlane Texas South FIPS 4205 Feet
Projection: Lambert Conformal Conic

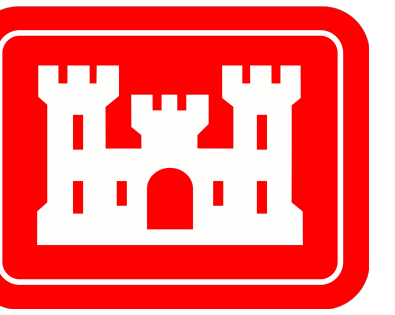
Dredging Reach Extent

Hydrographic Survey Extent

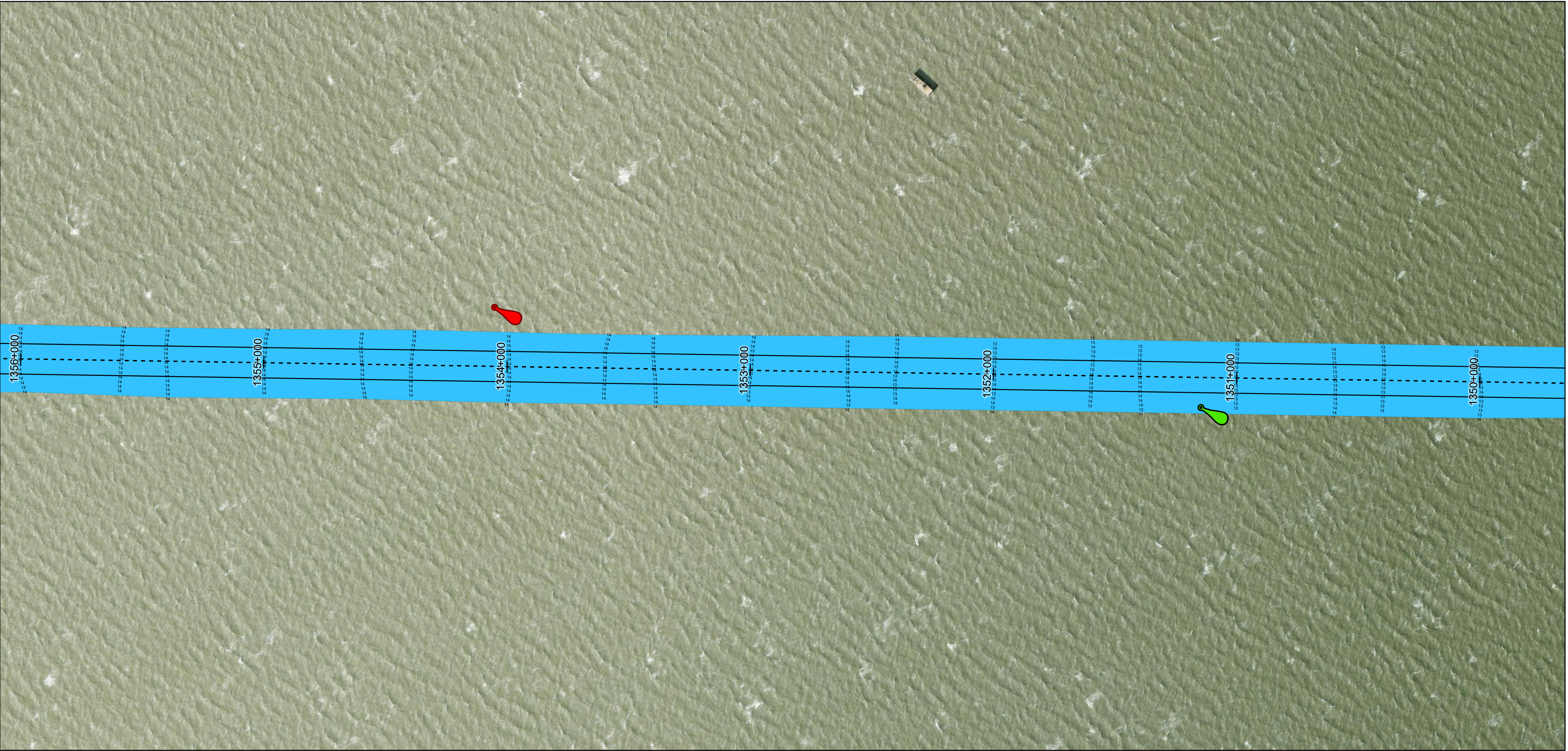
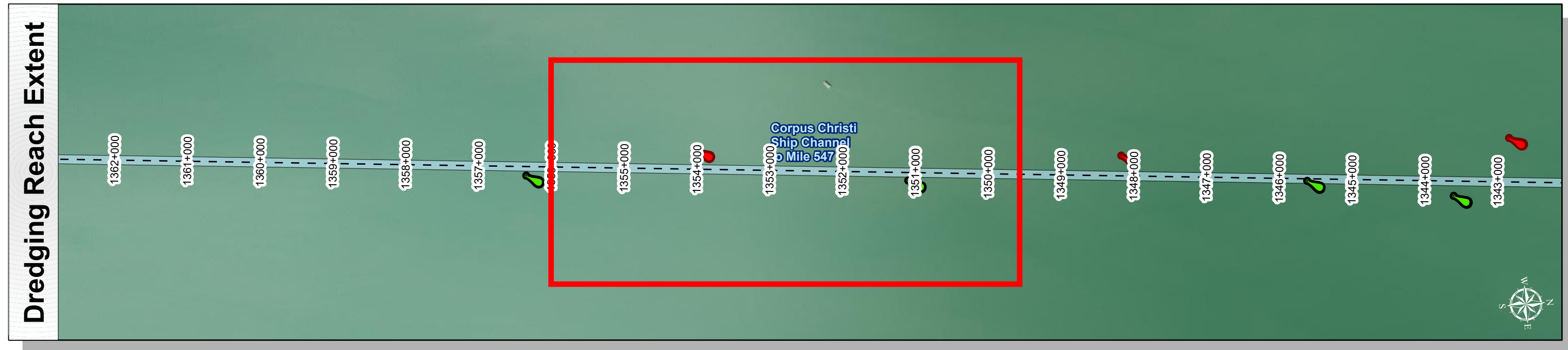
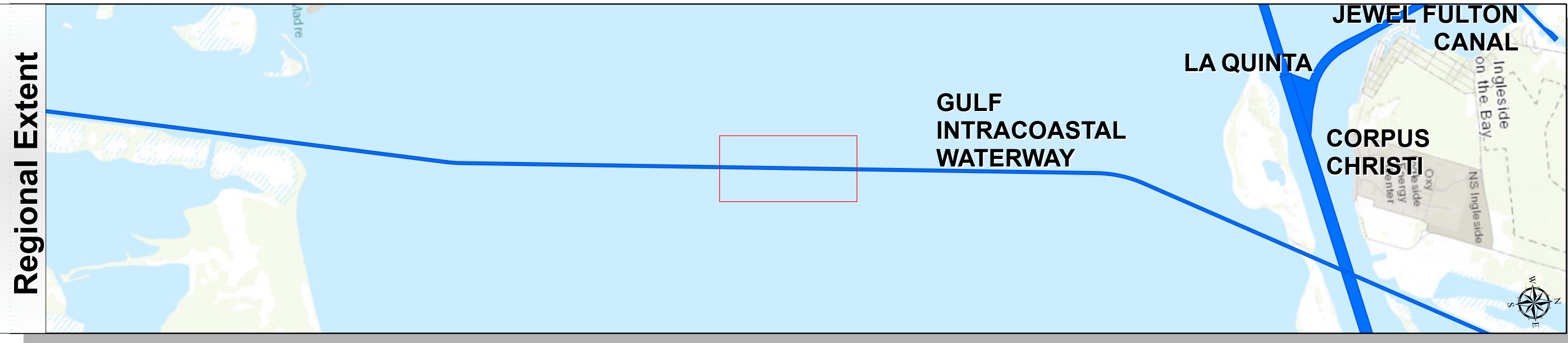
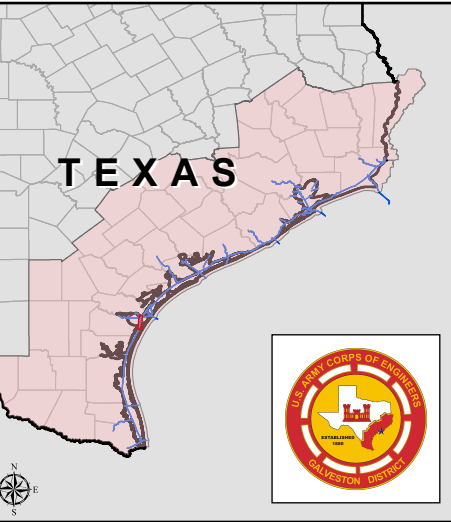
HYDROGRAPHIC SURVEY
U.S. ARMY ENGINEER DISTRICT
CORPS OF ENGINEERS
GALVESTON, TEXAS

Station: 1325+800 to 1368+860.93
GULF INTRACOASTAL WATERWAY
Corpus Christi Ship Channel to Mile 547

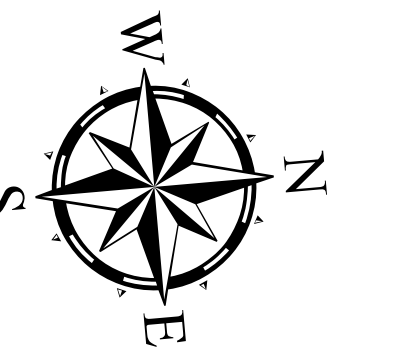
Gulf Intracoastal Waterway: Corpus Christi Ship Channel to Mile 547



U.S. Army Corps of Engineers
Galveston District



Latest Survey Collection Date: 06 June 2024	Authorized Depth: -13ft.
Document Page: 7 of 10	Side Slope Ratio: (Rise : Run)
Scale: 1:2,400	PDF Print Date: 6/11/2024
Mapped by: m3odnmhg	
Additional Imagery info:	



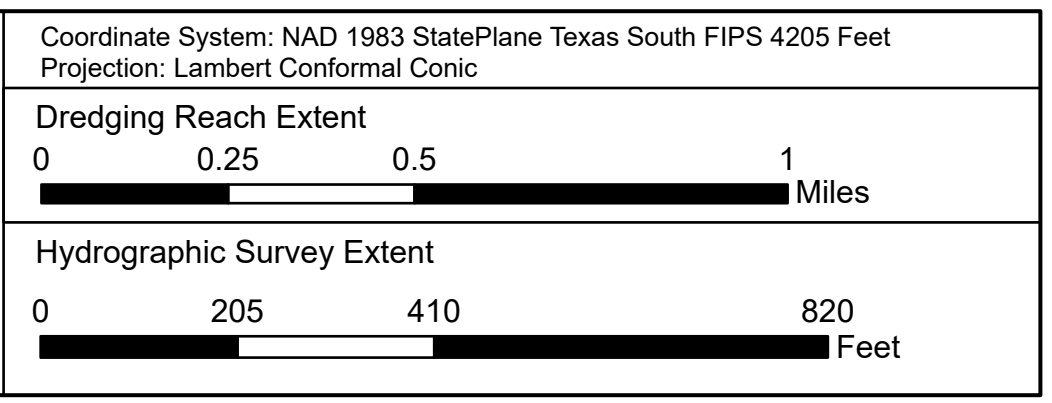
Channel Features	Aids to Navigation	MLLW
<ul style="list-style-type: none"> --- Channel Center Line — Channel Toe ↔ Channel Dimensions 	<ul style="list-style-type: none"> Green Side Aids Red Side Aids Lights 	<ul style="list-style-type: none"> 0 - 3 3 - 5 5 - 7 7 - 9 9 - 11 11 - 13 13 - 15 15 - 17 < 17

NOTES:

- Horizontal coordinates are referenced to Texas state plane coordinate system, south central zone nad83 us survey feet.
- Elevations are referenced to mean lower low tide (MLLW) datum.
- This project was designed by the Galveston District of the U.S. Army Corps of Engineers. The initials and signatures and registration designations of individuals appear on these project documents within the scope of their employment as required by 47 CFR 111.15-41.52.
- The information depicted on this survey map represents the results of surveys made on the dates indicated and can only be considered as indicating the general conditions existing at that time. These conditions are subject to rapid change due to shoaling events. A prudent mariner should not rely exclusively on the information provided here. Required by 33 CFR 209.225
- For the most up to date information please check our website at: <http://www.svg.usace.army.mil/Missions/Navigation/HydrographicSurveys/>

Service Layer Credits: World Topographic Map; Texas Parks & Wildlife; Esri; HERE; Garmin; INCREMENT P; USGS; METINASA; NGA; EPA; USDA
World Imagery; Maxar; Microsoft
World Imagery; Maxar

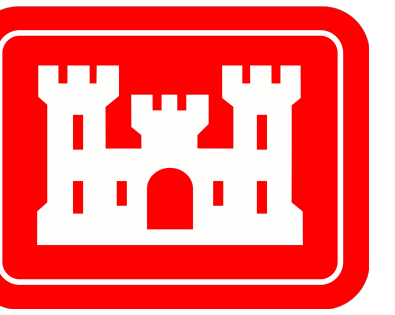
Additional Combined Survey Dates and Stationing:
COMB_SURV_INFO_HERE



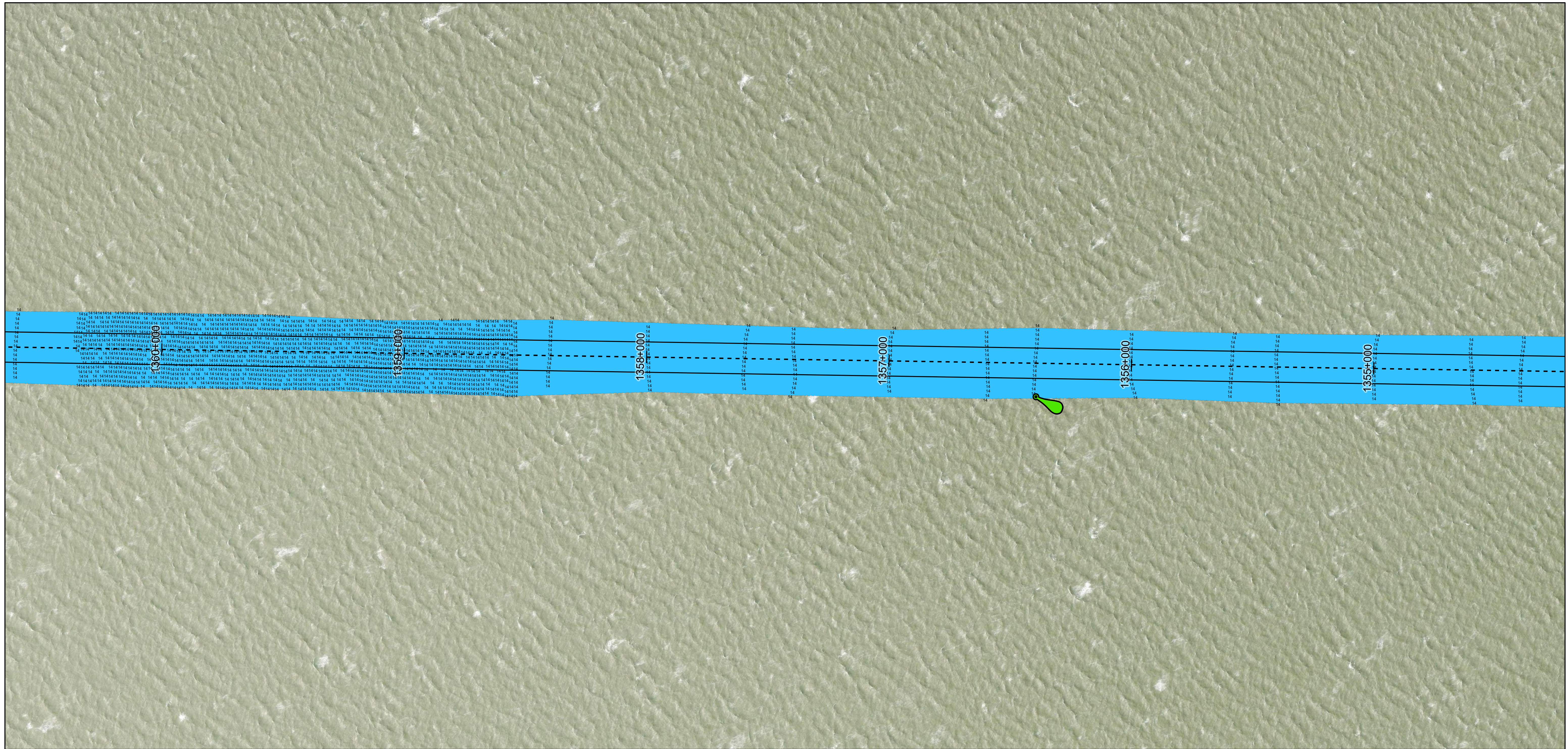
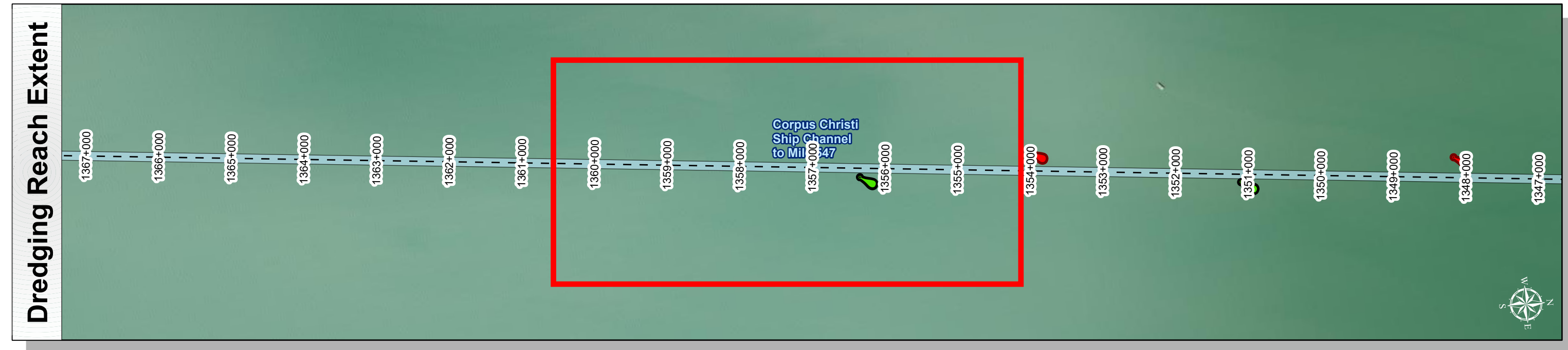
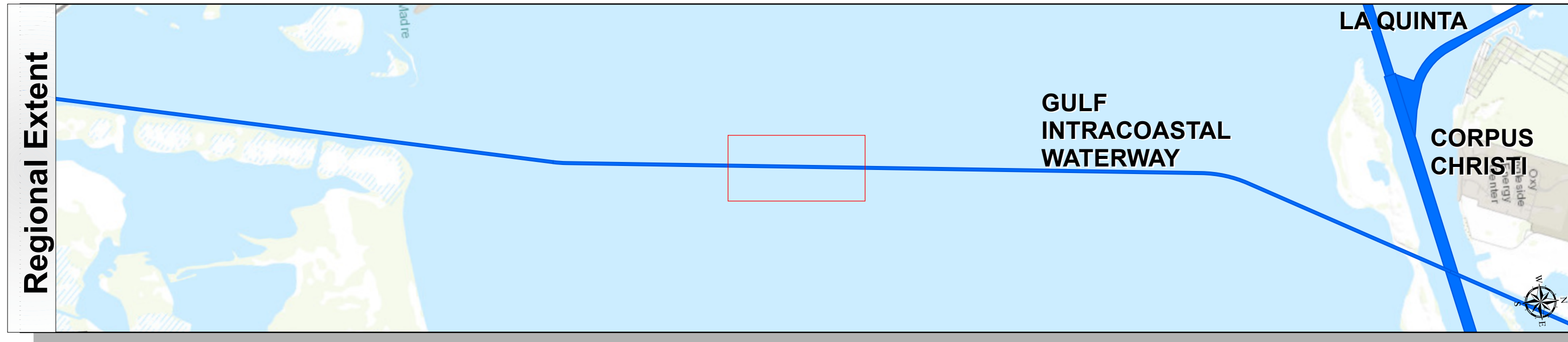
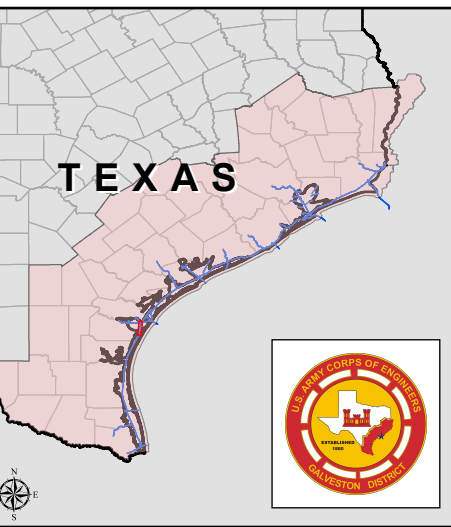
HYDROGRAPHIC SURVEY
U.S. ARMY ENGINEER DISTRICT
CORPS OF ENGINEERS
GALVESTON, TEXAS

Station: 1325+800 to 1368+860.93
GULF INTRACOASTAL WATERWAY
Corpus Christi Ship Channel to Mile 547

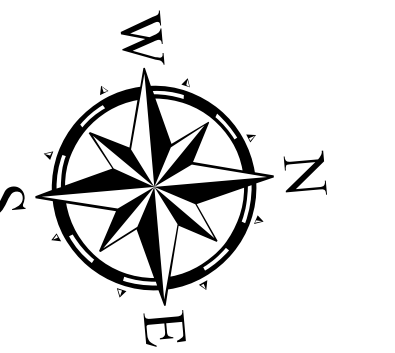
Gulf Intracoastal Waterway: Corpus Christi Ship Channel to Mile 547



U.S. Army Corps of Engineers
Galveston District



Latest Survey Collection Date: 06 June 2024	Authorized Depth: -13ft.
Document Page: 8 of 10	Side Slope Ratio: (Rise : Run)
Scale: 1:2,400	PDF Print Date: 6/11/2024
Mapped by: m3odmnhg	
Additional Imagery info:	



Channel Features	Aids to Navigation	Depth Legend (MLLW)
<ul style="list-style-type: none"> --- Channel Center Line — Channel Toe ↔ Channel Dimensions 	<ul style="list-style-type: none"> Green Side Aids Red Side Aids Lights 	<ul style="list-style-type: none"> 0 - 3 3 - 5 5 - 7 7 - 9 9 - 11 11 - 13 13 - 15 15 - 17 < 17

NOTES:

- Horizontal coordinates are referenced to Texas state plane coordinate system, south central zone nad83 us survey feet.
- Elevations are referenced to mean lower low tide (MLLW) datum.
- This project was designed by the Galveston District of the U.S. Army Corps of Engineers. The initials and signatures and registration designations of individuals appear on these project documents within the scope of their employment as required by 47 CFR 1110.41(b)(2).
- The information depicted on this survey map represents the results of surveys made on the dates indicated and can only be considered as indicating the general conditions existing at that time. These conditions are subject to rapid change due to shoaling events. A prudent mariner should not rely exclusively on the information provided here. Required by 33 CFR 200.225.
- For the most up to date information please check our website at: <http://www.swg.usace.army.mil/Missions/Navigation/HydrographicSurveys/>

Service Layer Credits: World Topographic Map: Texas Parks & Wildlife, Esri, HERE, Garmin, INCREMENT P, USGS, METINASA, NGA, EPA, USDA
World Imagery: Maxar, Microsoft
World Imagery: Maxar

Additional Combined Survey Dates and Stationing:
COMB_SURV_INFO_HERE

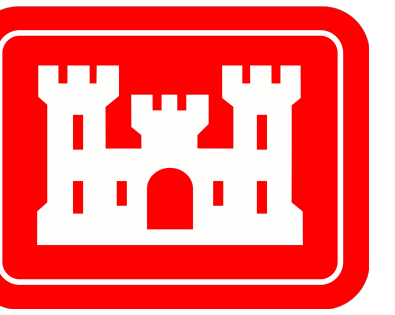
Dredging Reach Extent		
0	0.25	0.5
1 Miles		
Hydrographic Survey Extent		
0	205	410
820 Feet		

Coordinate System: NAD 1983 StatePlane Texas South FIPS 4205 Feet
Projection: Lambert Conformal Conic

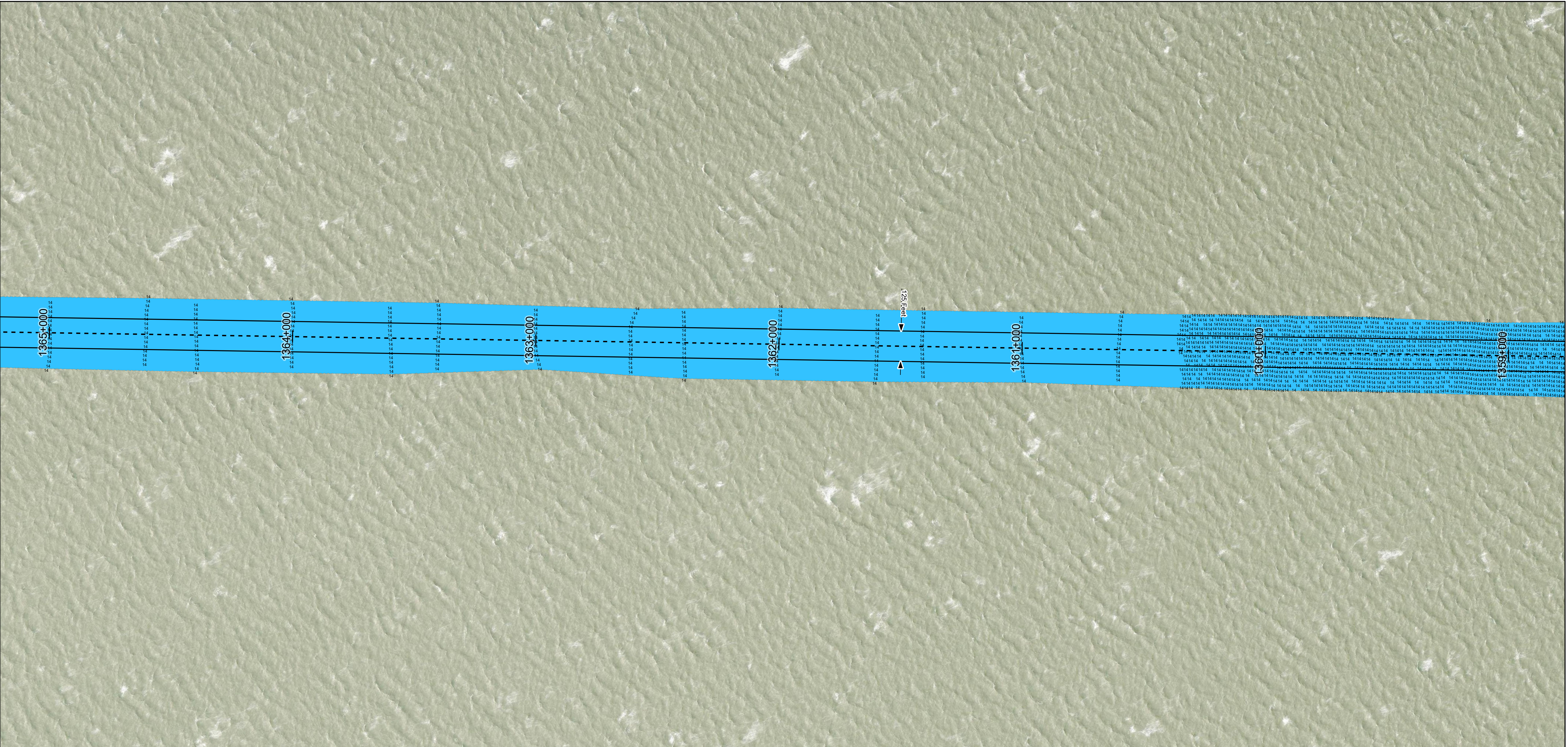
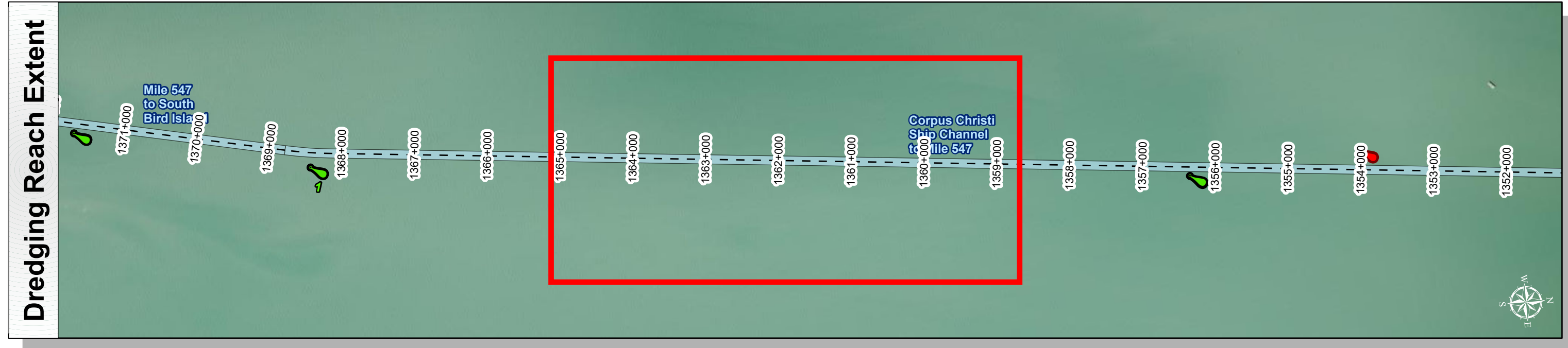
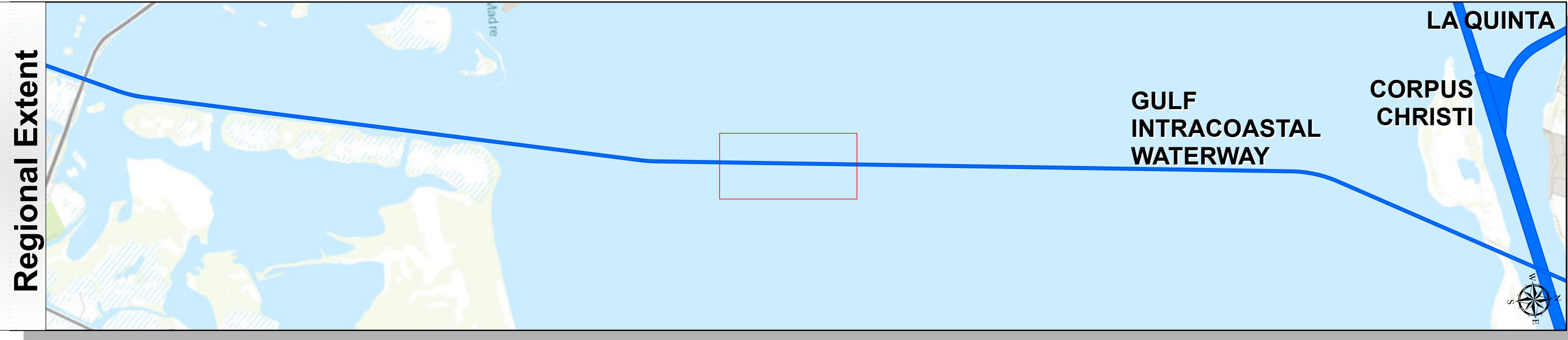
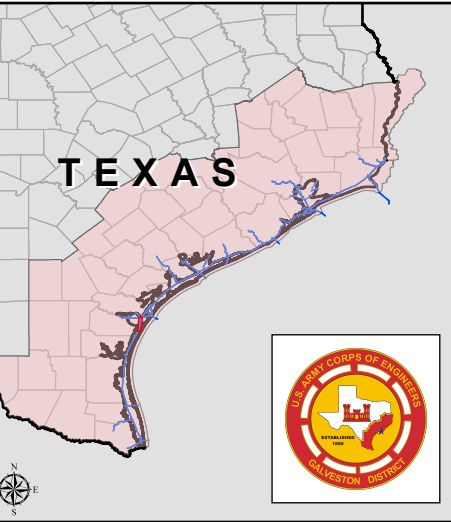
HYDROGRAPHIC SURVEY
U.S. ARMY ENGINEER DISTRICT
CORPS OF ENGINEERS
GALVESTON, TEXAS

Station: 1325+800 to 1368+860.93
GULF INTRACOASTAL WATERWAY
Corpus Christi Ship Channel to Mile 547

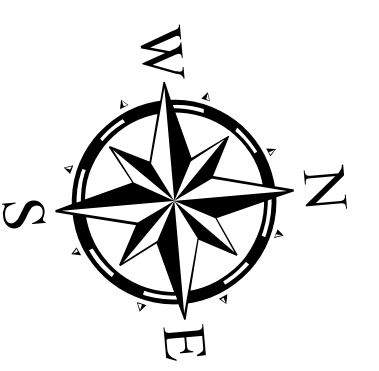
Gulf Intracoastal Waterway: Corpus Christi Ship Channel to Mile 547



U.S. Army Corps of Engineers
Galveston District



Latest Survey Collection Date: 06 June 2024	Authorized Depth: -13ft.
Document Page: 9 of 10	Side Slope Ratio: (Rise : Run)
Scale: 1:2,400	PDF Print Date: 6/11/2024
Mapped by: m3odnmh	
Additional Imagery info:	
Website Index Number: 203	



Channel Features

- Channel Center Line
- Channel Toe
- ↔ Channel Dimensions

Aids to Navigation

- Green Side Aids
- Red Side Aids
- Lights

MLLW

0 - 3	3 - 5	5 - 7	7 - 9	9 - 11	11 - 13	13 - 15	15 - 17	< 17
-------	-------	-------	-------	--------	---------	---------	---------	------

NOTES:

- Horizontal coordinates are referenced to Texas state plane coordinate system, south central zone nad83 us survey feet.
- Elevations are referenced to mean lower low tide (MLLW) datum.
- This project was designed by the Galveston District of the U.S. Army Corps of Engineers. The initials and signatures and registration designations of individuals appear on these project documents within the scope of their employment as required by 47 CFR 110.1-8152.
- The information depicted on this survey map represents the results of surveys made on the dates indicated and can only be considered as indicating the general conditions existing at that time. These conditions are subject to rapid change due to shoaling events. A prudent mariner should not rely exclusively on the information provided here. Required by 33 CFR 209.325
- For the most up to date information please check our website at: <http://www.usace.army.mil/Missions/Navigation/HydrographicSurveys/>

Service Layer Credits: World Topographic Map; Texas Parks & Wildlife; Esri; HERE; Garmin; INCREMENT P; USGS; METINASA; NGA; EPA; USDA
World Imagery: Maxar; Microsoft
World Imagery: Maxar

Additional Combined Survey Dates and Stationing:
COMB_SURV_INFO_HERE

Coordinate System: NAD 1983 StatePlane Texas South FIPS 4205 Feet
Projection: Lambert Conformal Conic

Dredging Reach Extent

0 0.25 0.5 1 Miles

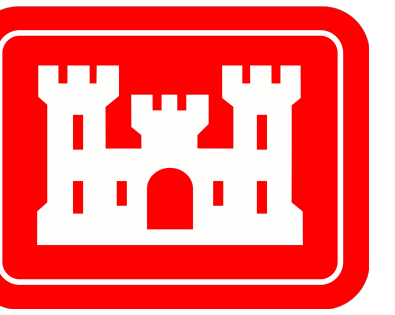
Hydrographic Survey Extent

0 205 410 820 Feet

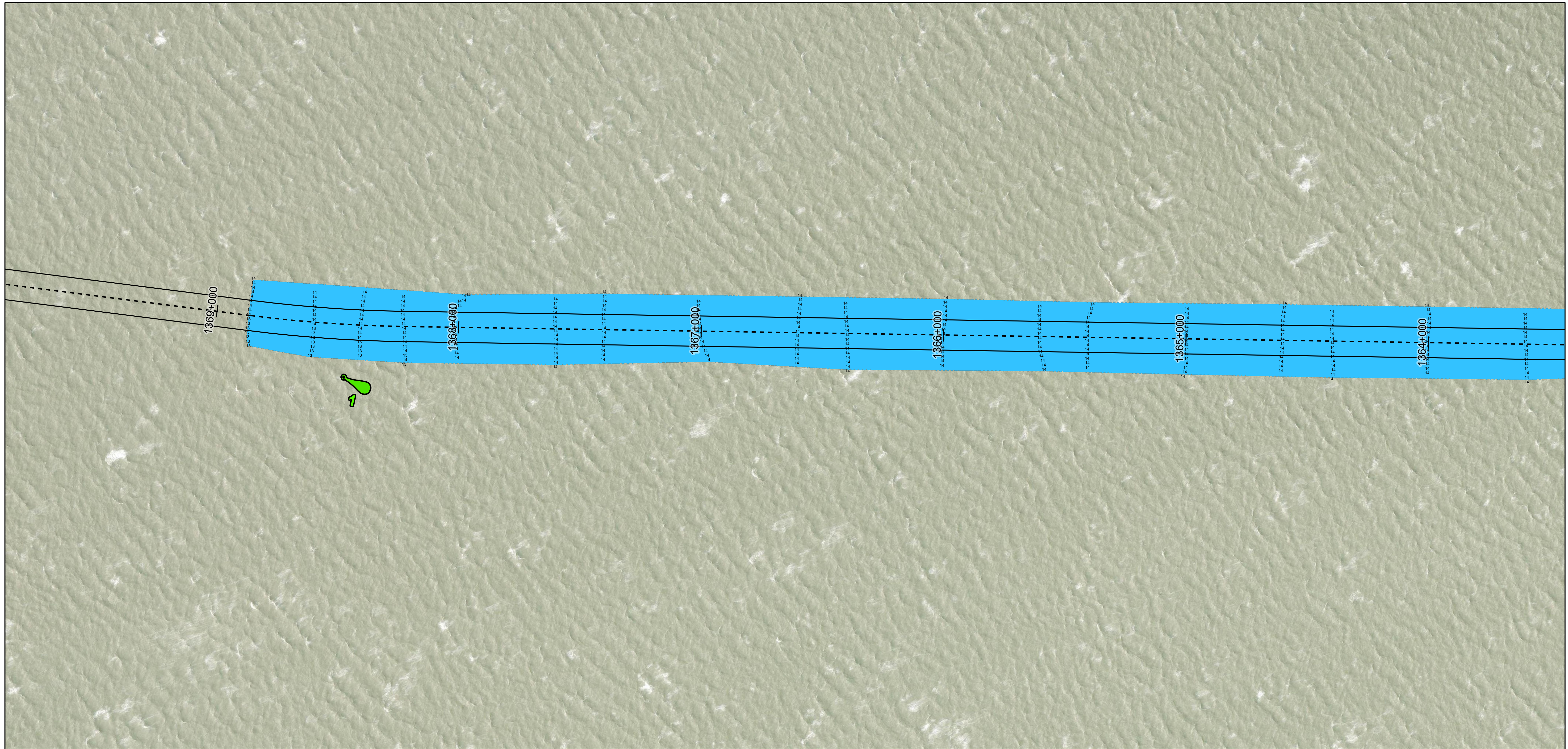
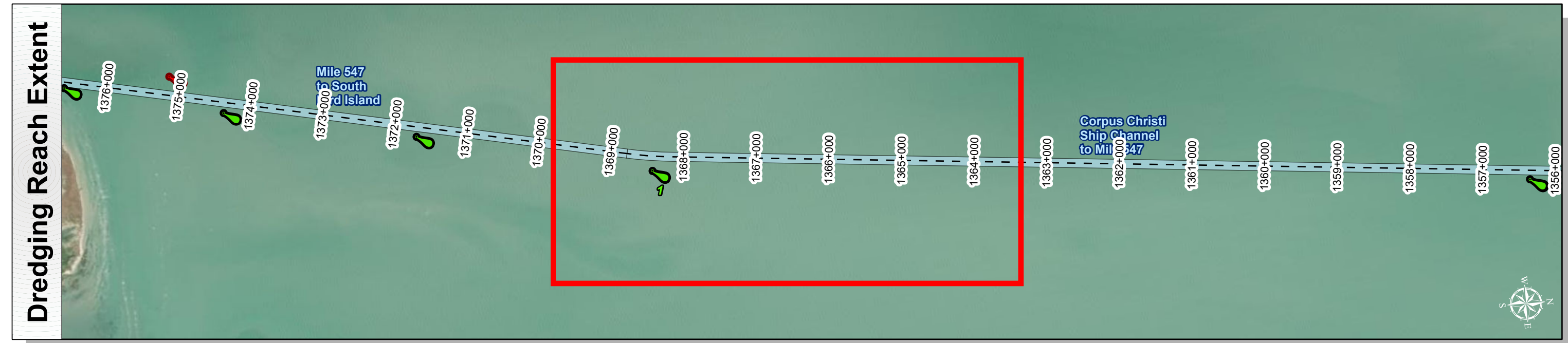
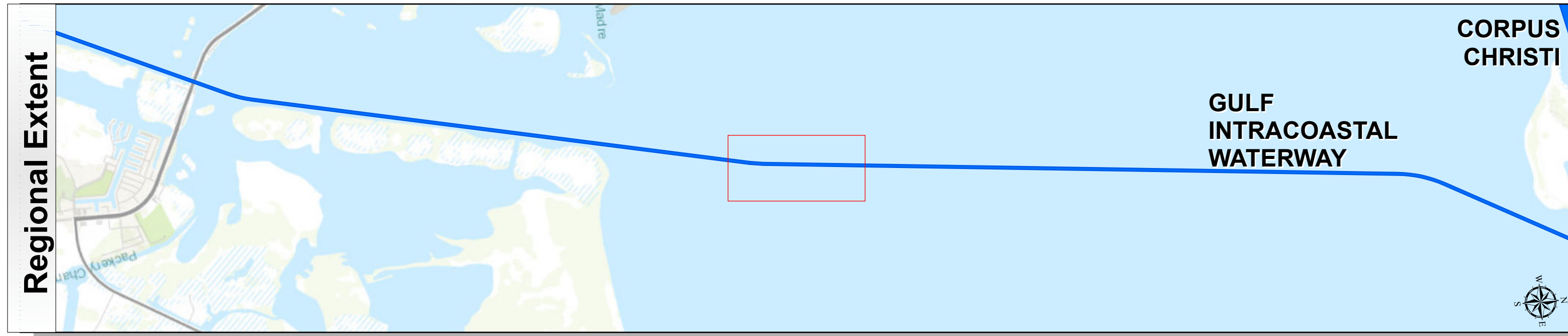
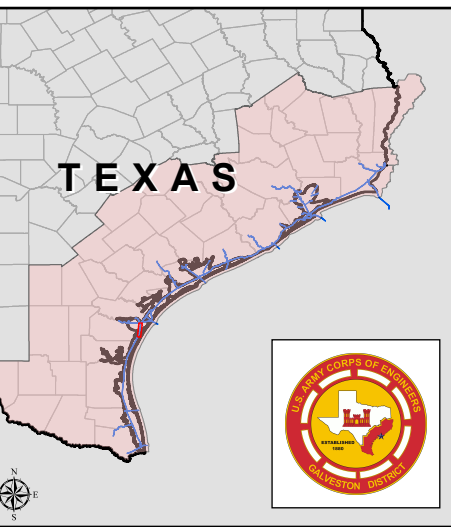
HYDROGRAPHIC SURVEY
U.S. ARMY ENGINEER DISTRICT
CORPS OF ENGINEERS
GALVESTON, TEXAS

Station: 1325+800 to 1368+860.93
GULF INTRACOASTAL WATERWAY
Corpus Christi Ship Channel to Mile 547

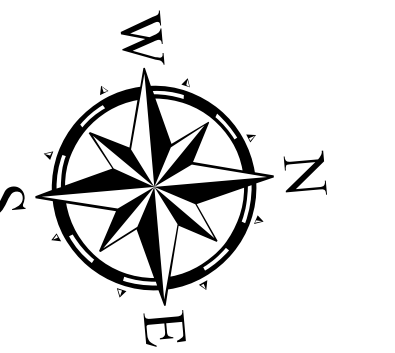
Gulf Intracoastal Waterway: Corpus Christi Ship Channel to Mile 547



U.S. Army Corps of Engineers
Galveston District



Latest Survey Collection Date: 06 June 2024	Authorized Depth: -13ft.
Document Page: 10 of 10	Side Slope Ratio: (Rise : Run)
Scale: 1:2,400	PDF Print Date: 6/11/2024
Mapped by: m3odnmh	
Additional Imagery info:	
Website Index Number: 204	



Channel Features

- Channel Center Line
- Channel Toe
- ↔ Channel Dimensions

Aids to Navigation

- Green Side Aids
- Red Side Aids
- Lights

MLLW

0 - 3	3 - 5	5 - 7	7 - 9	9 - 11	11 - 13	13 - 15	15 - 17	< 17
-------	-------	-------	-------	--------	---------	---------	---------	------

NOTES:

- Horizontal coordinates are referenced to Texas state plane coordinate system, south central zone nad83 us survey feet.
- Elevations are referenced to mean lower low tide (MLLW) datum.
- This project was designed by the Galveston District of the U.S. Army Corps of Engineers. The initials and signatures and registration designations of individuals appear on these project documents within the scope of their employment as required by 47 CFR 110.1-41.52.
- The information depicted on this survey map represents the results of surveys made on the dates indicated and can only be considered as indicating the general conditions existing at that time. These conditions are subject to rapid change due to shoaling events. A prudent mariner should not rely exclusively on the information provided here. Required by 33 CFR 209.325
- For the most up to date information please check our website at: <http://www.svg.usace.army.mil/Missions/Navigation/HydrographicSurveys/>

Service Layer Credits: World Topographic Map; Texas Parks & Wildlife; Esri, HERE, Garmin, INCREMENT P, USGS, METI/NASA, NGA, EPA, USDA
World Imagery: Maxar, Microsoft
World Imagery: Maxar

Additional Combined Survey Dates and Stationing:
COMB_SURV_INFO_HERE

Coordinate System: NAD 1983 StatePlane Texas South FIPS 4205 Feet
Projection: Lambert Conformal Conic

Dredging Reach Extent

Hydrographic Survey Extent

HYDROGRAPHIC SURVEY
U.S. ARMY ENGINEER DISTRICT
CORPS OF ENGINEERS
GALVESTON, TEXAS

Station: 1325+800 to 1368+860.93
GULF INTRACOASTAL WATERWAY
Corpus Christi Ship Channel to Mile 547