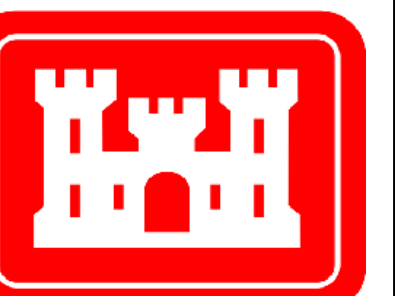
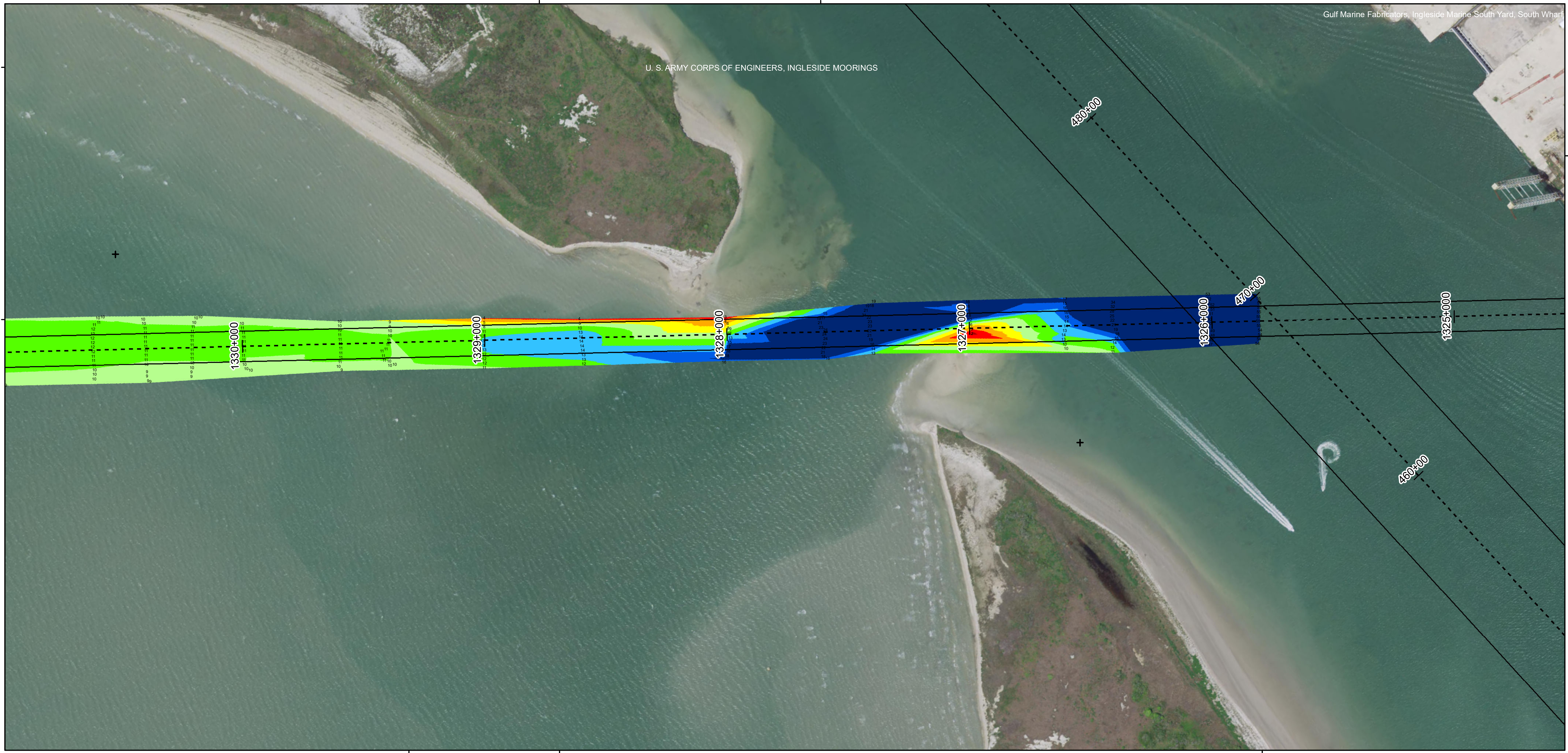
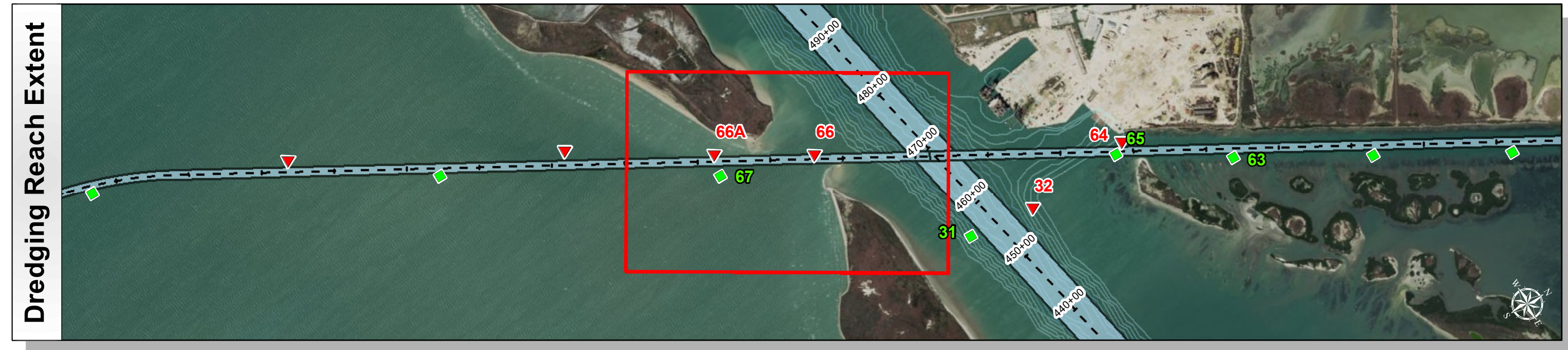


Gulf Intracoastal Waterway: Corpus Christi Ship Channel to Mile 547



U.S. Army Corps of Engineers
Galveston District



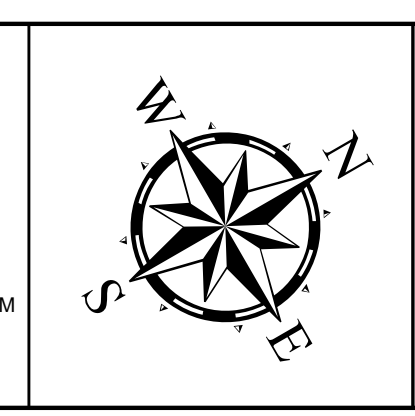
Survey Date(s): 06 May 2018	Authorized Depth: -13ft.
Page: 195 of 10	Side Slope Ratio: (Rise : Run)
Scale: 1:2,400	Additional Imagery: © DigitalGlobe Inc.
Mapped by: m3odnrvk	Print Date: 5/7/2018
Additional Info:	

Channel Features	Aids to Navigation	MLLW
— Channel Toe	★ Lights	> 3
- - - Channel Center Line	▲ Red Side Aids	3 - 5
— Channel Station Lines	■ Green Side Aids	5 - 7
↔ Channel Dimensions	◆ Mooring Buoy	7 - 9
		9 - 11
		11 - 13
		13 - 15
		15 - 17
		< 17
		NOAA Bathymetry (DREDGING REACH EXTENT)
		0 - 10 10 - 15 15 - 20 20 - 25 25 - 30 30 - 50

NOTES:

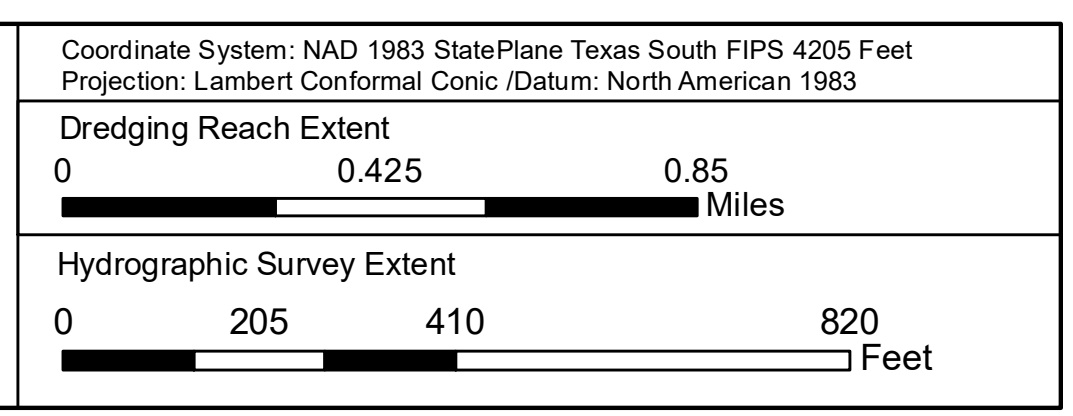
- HORIZONTAL COORDINATES ARE REFERENCED TO TEXAS STATE PLANE COORDINATE SYSTEM, SOUTH CENTRAL ZONE NAD83 US SURVEY FEET.
- ELEVATIONS ARE REFERENCED TO MEAN LOWER LOW TIDE (MLLW) DATUM.
- THIS PROJECT WAS DESIGNED BY THE GALVESTON DISTRICT OF THE U.S. ARMY CORPS OF ENGINEERS. THE INITIALS AND SIGNATURES AND REGISTRATION DESIGNATIONS OF INDIVIDUALS APPEAR ON THESE PROJECT DOCUMENTS WITHIN THE SCOPE OF THEIR EMPLOYMENT AS REQUIRED BY ER1110-1-8152.

- THE INFORMATION DEPICTED ON THIS SURVEY MAP REPRESENTS THE RESULTS OF SURVEYS MADE ON THE DATES INDICATED AND CAN ONLY BE CONSIDERED AS INDICATING THE GENERAL CONDITIONS EXISTING AT THAT TIME. THESE CONDITIONS ARE SUBJECT TO RAPID CHANGE DUE TO SHOALING EVENTS. A PRUDENT MARINER SHOULD NOT RELY EXCLUSIVELY ON THE INFORMATION PROVIDED HERE. REQUIRED BY 33 CFR 209.325
- FOR THE MOST UP TO DATE INFORMATION PLEASE CHECK OUR WEBSITE AT: [HTTP://WWW.SWG.USACE.ARMY.MIL/MISSIONS/NAVIGATION/HYDROGRAPHICS/SURVEYS/](http://www.swg.usace.army.mil/missions/navigation/hydrographics/surveys/)
- NOAA BATHYMETRY CONTOURS PRODUCED FROM HISTORIC BATHYMETRIC (HYDROGRAPHIC) SURVEYS CONDUCTED BY THE NOAA NATIONAL OCEAN SERVICE COAST SURVEY, AVAILABLE FROM THE NATIONAL GEOPHYSICAL DATA CENTER. SURVEYS VARY AS TO SOUNDING DENSITY, ACCURACY OF DEPTH, ACCURACY OF NAVIGATION, ZERO DATUM, DATE OF SURVEY AND TYPE OF INSTRUMENTATION.



Service Layer Credits: Sources: Esri, HERE, Garmin, Intermap, increment P Corp., GEBCO, USGS, FAO, NPS, NRCAN, GeoBase, IGN, Kadaster NL, Ordnance Survey, Esri Japan, METI, Esri China (Hong Kong), swisstopo, © OpenStreetMap contributors, and the GIS User Community

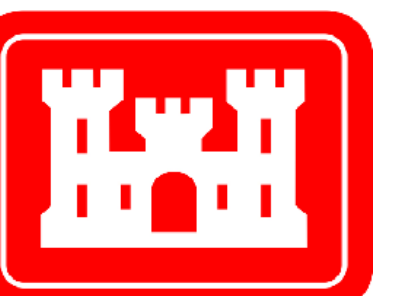
Source: Esri, DigitalGlobe, GeoEye, Earthstar Geographics, CNES/Airbus DS, USDA, USGS, AeroGRID, IGN, and the GIS User Community



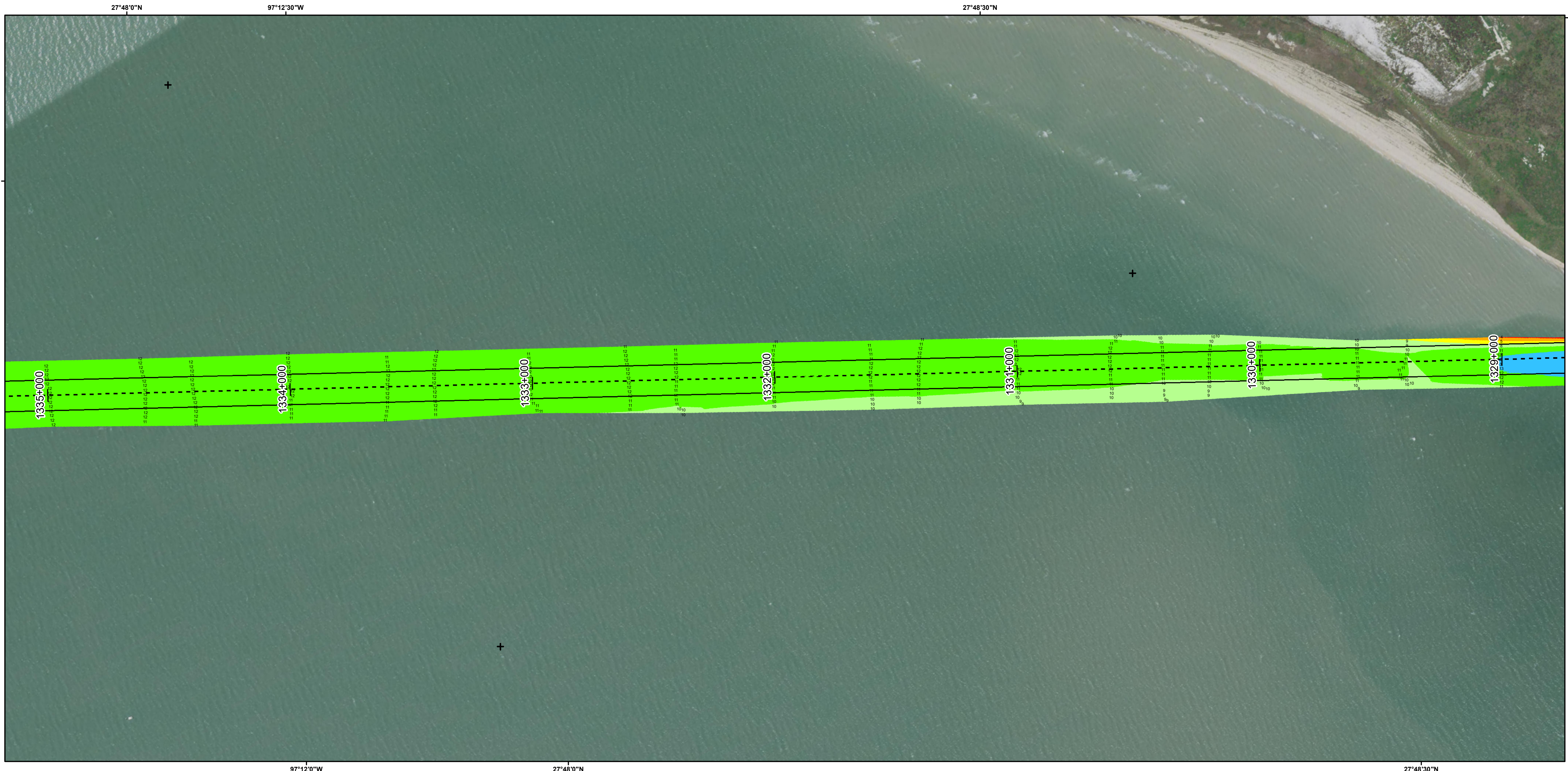
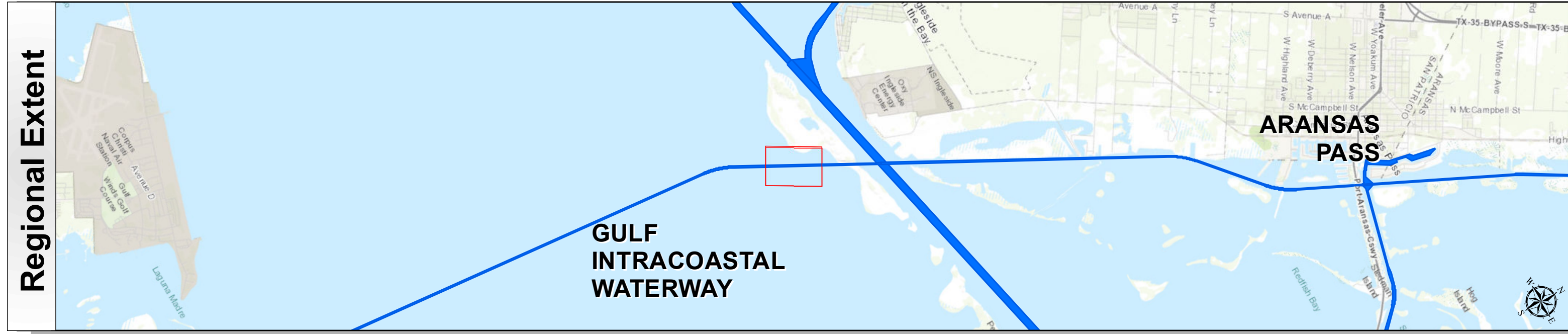
HYDROGRAPHIC SURVEY
U.S. ARMY ENGINEER DISTRICT
CORPS OF ENGINEERS
GALVESTON, TEXAS
Corpus Christi Ship Channel to Mile 547

Station: 1325+800 to 1368+860.93
GULF INTRACOASTAL WATERWAY
TEXAS

Gulf Intracoastal Waterway: Corpus Christi Ship Channel to Mile 547



U.S. Army Corps of Engineers
Galveston District



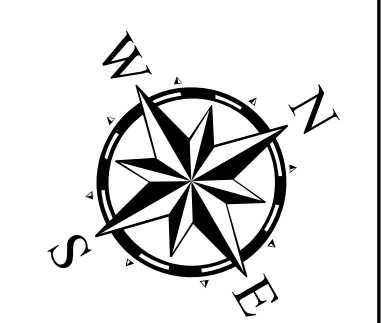
Survey Date(s): 06 May 2018	Authorized Depth: -13ft.
Page: 196 of 10	Side Slope Ratio: (Rise : Run)
Scale: 1:2,400	Additional Imagery: © DigitalGlobe Inc.
Mapped by: m3odnrvk	Print Date: 5/7/2018
Additional Info:	

Channel Features	Aids to Navigation	MLLW
<ul style="list-style-type: none"> Channel Toe Channel Center Line Channel Station Lines Channel Dimensions 	<ul style="list-style-type: none"> Lights Red Side Aids Green Side Aids Mooring Buoy 	<p>NOAA Bathymetry (DREDGING REACH EXTENT)</p> <p>0 - 10 10 - 15 15 - 20 20 - 25 25 - 30 30 - 50</p>

NOTES:

- HORIZONTAL COORDINATES ARE REFERENCED TO TEXAS STATE PLANE COORDINATE SYSTEM, SOUTH CENTRAL ZONE NAD83 US SURVEY FEET.
- ELEVATIONS ARE REFERENCED TO MEAN LOWER LOW TIDE (MLLW) DATUM.
- THIS PROJECT WAS DESIGNED BY THE GALVESTON DISTRICT OF THE U.S. ARMY CORPS OF ENGINEERS. THE INITIALS AND SIGNATURES AND REGISTRATION DESIGNATIONS OF INDIVIDUALS APPEAR ON THESE PROJECT DOCUMENTS WITHIN THE SCOPE OF THEIR EMPLOYMENT AS REQUIRED BY ER1110-1-8152.

- THE INFORMATION DEPICTED ON THIS SURVEY MAP REPRESENTS THE RESULTS OF SURVEYS MADE ON THE DATES INDICATED AND CAN ONLY BE CONSIDERED AS INDICATING THE GENERAL CONDITIONS EXISTING AT THAT TIME. THESE CONDITIONS ARE SUBJECT TO RAPID CHANGE DUE TO SHOALING EVENTS. A PRUDENT MARINER SHOULD NOT RELY EXCLUSIVELY ON THE INFORMATION PROVIDED HERE. REQUIRED BY 33 CFR 209.325
- FOR THE MOST UP TO DATE INFORMATION PLEASE CHECK OUR WEBSITE AT: [HTTP://WWW.SWG.USACE.ARMY.MIL/MISSIONS/NAVIGATION/HYDROGRAPHIC/SURVEYS/](http://www.swg.usace.army.mil/missions/navigation/hydrographic/surveys/)
- NOAA BATHYMETRY CONTOURS PRODUCED FROM HISTORIC BATHYMETRIC (HYDROGRAPHIC) SURVEYS CONDUCTED BY THE NOAA NATIONAL OCEAN SERVICE/COAST SURVEY, AVAILABLE FROM THE NATIONAL GEOPHYSICAL DATA CENTER. SURVEYS VARY AS TO SOUNDING DENSITY, ACCURACY OF DEPTH, ACCURACY OF NAVIGATION, ZERO DATUM, DATE OF SURVEY AND TYPE OF INSTRUMENTATION.



Service Layer Credits: Sources: Esri, HERE, Garmin, Intermap, increment P Corp., GEBCO, USGS, FAO, NPS, NRCAN, GeoBase, IGN, Kadaster NL, Ordnance Survey, Esri Japan, METI, Esri China (Hong Kong), swisstopo, © OpenStreetMap contributors, and the GIS User Community

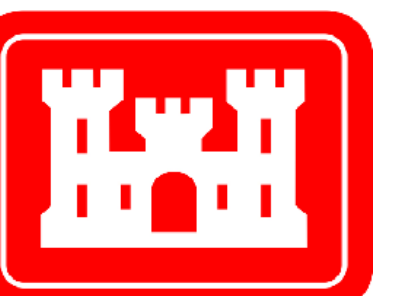
Source: Esri, DigitalGlobe, GeoEye, Earthstar Geographics, CNES/Airbus DS, USDA, USGS, AeroGRID, IGN, and the GIS User Community

Coordinate System: NAD 1983 StatePlane Texas South FIPS 4205 Feet Projection: Lambert Conformal Conic /Datum: North American 1983	
Dredging Reach Extent	0 0.425 0.85 Miles
Hydrographic Survey Extent	0 205 410 820 Feet

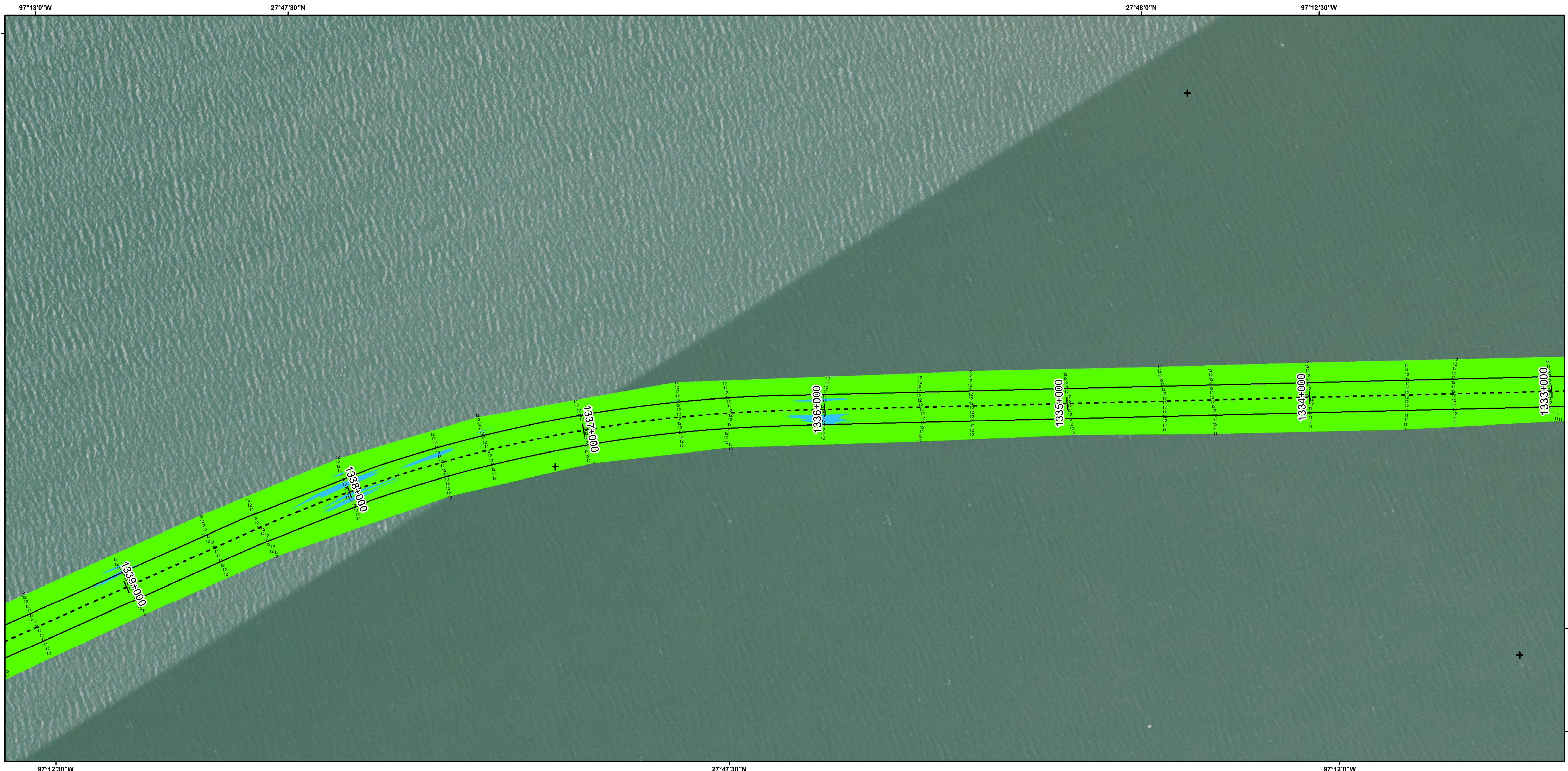
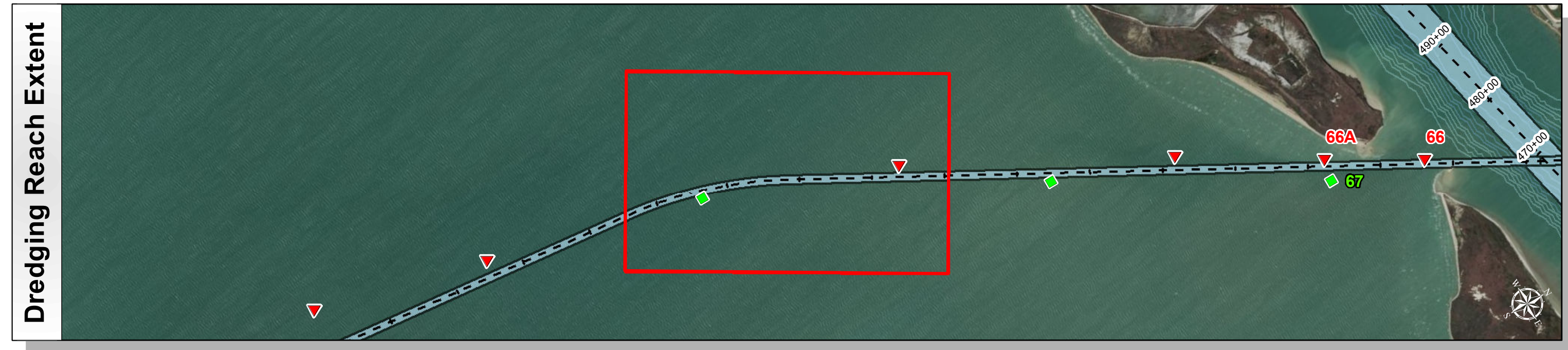
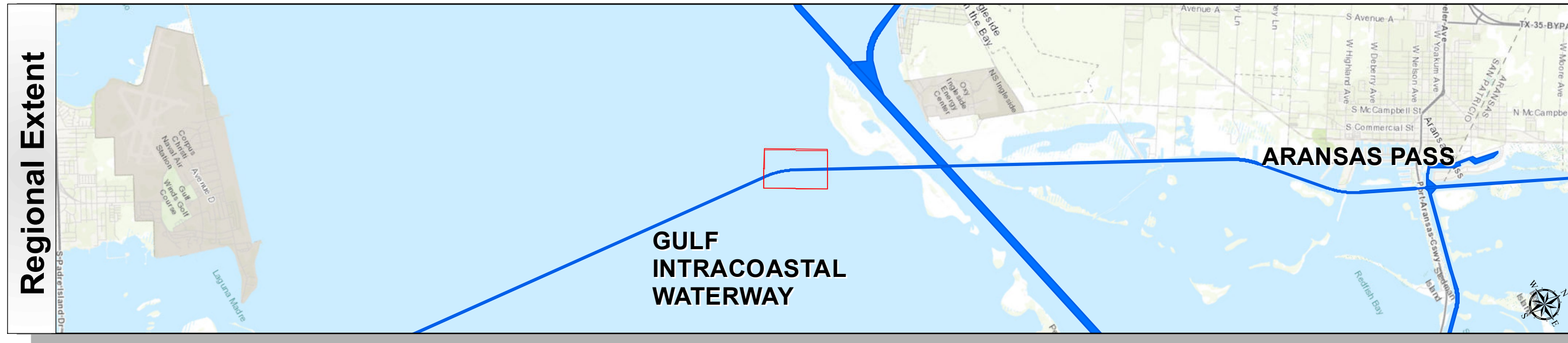
HYDROGRAPHIC SURVEY
U.S. ARMY ENGINEER DISTRICT
CORPS OF ENGINEERS
GALVESTON, TEXAS
Corpus Christi Ship Channel to Mile 547

Station: 1325+800 to 1368+860.93
GULF INTRACOASTAL WATERWAY
TEXAS

Gulf Intracoastal Waterway: Corpus Christi Ship Channel to Mile 547



U.S. Army Corps of Engineers
Galveston District

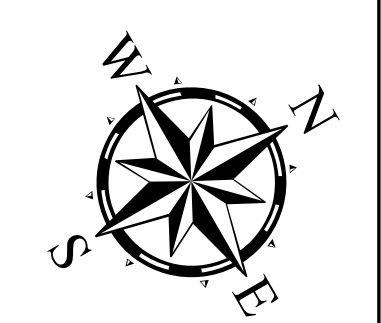


Channel Features	Aids to Navigation	MLLW
— Channel Toe	★ Lights	> 3
- - - Channel Center Line	▲ Red Side Aids	3 - 5
— Channel Station Lines	■ Green Side Aids	5 - 7
↔ Channel Dimensions	◆ Mooring Buoy	7 - 9
		9 - 11
		11 - 13
		13 - 15
		15 - 17
		< 17
		NOAA Bathymetry (DREDGING REACH EXTENT)
		0 - 10 10 - 15 15 - 20 20 - 25 25 - 30 30 - 50

NOTES:

- HORIZONTAL COORDINATES ARE REFERENCED TO TEXAS STATE PLANE COORDINATE SYSTEM, SOUTH CENTRAL ZONE NAD83 US SURVEY FEET.
- ELEVATIONS ARE REFERENCED TO MEAN LOWER LOW TIDE (MLLW) DATUM.
- THIS PROJECT WAS DESIGNED BY THE GALVESTON DISTRICT OF THE U.S. ARMY CORPS OF ENGINEERS. THE INITIALS AND SIGNATURES AND REGISTRATION DESIGNATIONS OF INDIVIDUALS APPEAR ON THESE PROJECT DOCUMENTS WITHIN THE SCOPE OF THEIR EMPLOYMENT AS REQUIRED BY ER1110-1-8152.

- THE INFORMATION DEPICTED ON THIS SURVEY MAP REPRESENTS THE RESULTS OF SURVEYS MADE ON THE DATES INDICATED AND CAN ONLY BE CONSIDERED AS INDICATING THE GENERAL CONDITIONS EXISTING AT THAT TIME. THESE CONDITIONS ARE SUBJECT TO RAPID CHANGE DUE TO SHOALING EVENTS. A PRUDENT MARINER SHOULD NOT RELY EXCLUSIVELY ON THE INFORMATION PROVIDED HERE. REQUIRED BY 33 CFR 209.325
- FOR THE MOST UP TO DATE INFORMATION PLEASE CHECK OUR WEBSITE AT: [HTTP://WWW.SWG.USACE.ARMY.MIL/MISSIONS/NAVIGATION/HYDROGRAPHICSURVEYS/](http://www.swg.usace.army.mil/missions/navigation/hydrographicsurveys/)
- NOAA BATHYMETRY CONTOURS PRODUCED FROM HISTORIC BATHYMETRIC (HYDROGRAPHIC) SURVEYS CONDUCTED BY THE NOAA NATIONAL OCEAN SERVICE/COAST SURVEY, AVAILABLE FROM THE NATIONAL GEOPHYSICAL DATA CENTER. SURVEYS VARY AS TO SOUNDING DENSITY, ACCURACY OF DEPTH, ACCURACY OF NAVIGATION, ZERO DATUM, DATE OF SURVEY AND TYPE OF INSTRUMENTATION.



Service Layer Credits: Sources: Esri, HERE, Garmin, Intermap, increment P Corp., GEBCO, USGS, FAO, NPS, NRCAN, GeoBase, IGN, Kadaster NL, Ordnance Survey, Esri Japan, METI, Esri China (Hong Kong), swisstopo, © OpenStreetMap contributors, and the GIS User Community
Source: Esri, DigitalGlobe, GeoEye, Earthstar Geographics, CNES/Airbus DS, USDA, USGS, AeroGRID, IGN, and the GIS User Community

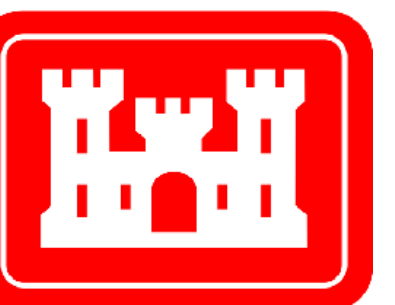
Coordinate System: NAD 1983 StatePlane Texas South FIPS 4205 Feet Projection: Lambert Conformal Conic /Datum: North American 1983	
Dredging Reach Extent	0 0.425 0.85 Miles
Hydrographic Survey Extent	0 205 410 820 Feet

Survey Date(s): 06 May 2018	Authorized Depth: -13ft.
Page: 197 of 10	Side Slope Ratio: (Rise : Run)
Scale: 1:2,400	Additional Imagery: © DigitalGlobe Inc.
Mapped by: m3odnrnk	Print Date: 5/7/2018
Additional Info:	

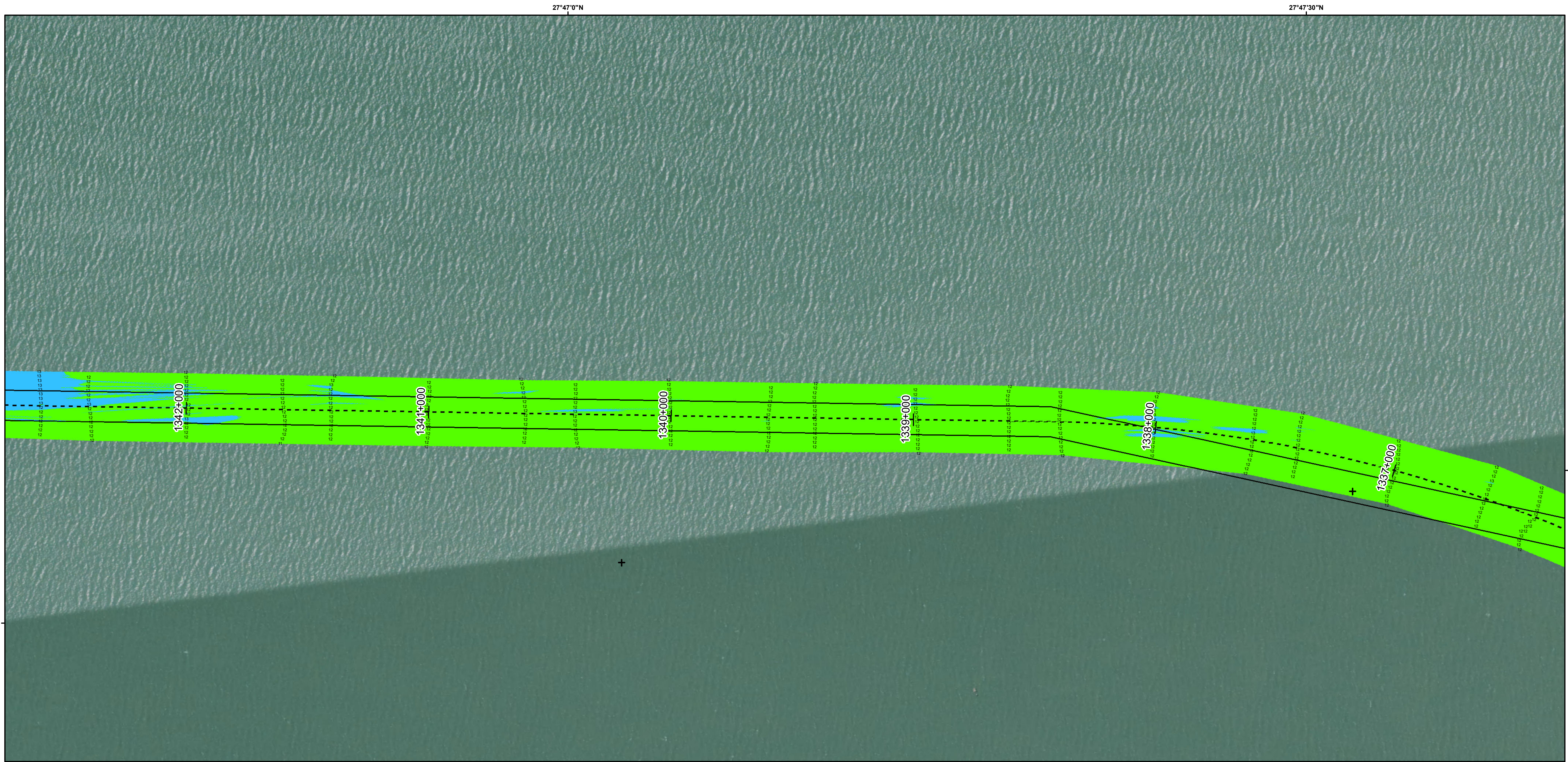
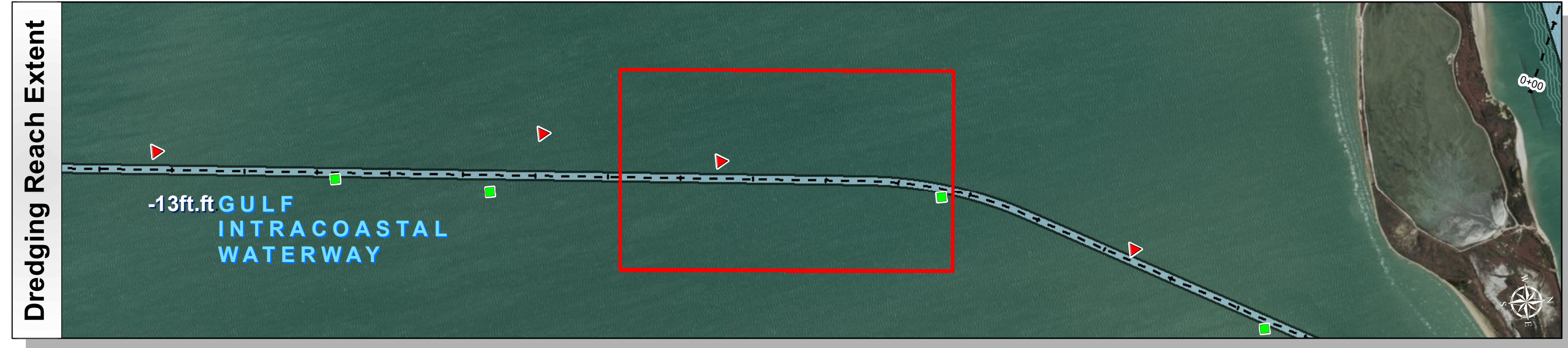
HYDROGRAPHIC SURVEY
U.S. ARMY ENGINEER DISTRICT
CORPS OF ENGINEERS
GALVESTON, TEXAS
Corpus Christi Ship Channel to Mile 547

Station: 1325+800 to 1368+860.93
GULF INTRACOASTAL WATERWAY
TEXAS

Gulf Intracoastal Waterway: Corpus Christi Ship Channel to Mile 547



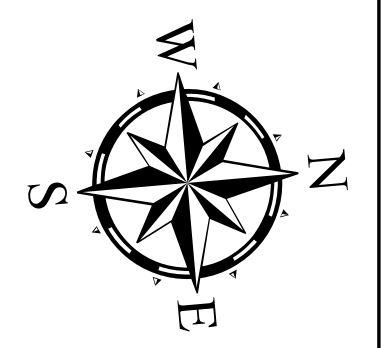
U.S. Army Corps of Engineers
Galveston District



Channel Features	Aids to Navigation	MLLW
— Channel Toe	★ Lights	> 3
- - - Channel Center Line	▲ Red Side Aids	3 - 5
— Channel Station Lines	■ Green Side Aids	5 - 7
↔ Channel Dimensions	◆ Mooring Buoy	7 - 9
		9 - 11
		11 - 13
		13 - 15
		15 - 17
		< 17
		NOAA Bathymetry (DREDGING REACH EXTENT)
		0 - 10
		10 - 15
		15 - 20
		20 - 25
		25 - 30
		30 - 50

NOTES:

- HORIZONTAL COORDINATES ARE REFERENCED TO TEXAS STATE PLANE COORDINATE SYSTEM, SOUTH CENTRAL ZONE NAD83 US SURVEY FEET.
- ELEVATIONS ARE REFERENCED TO MEAN LOWER LOW TIDE (MLLW) DATUM.
- THIS PROJECT WAS DESIGNED BY THE GALVESTON DISTRICT OF THE U.S. ARMY CORPS OF ENGINEERS. THE INITIALS AND SIGNATURES AND REGISTRATION DESIGNATIONS OF INDIVIDUALS APPEAR ON THESE PROJECT DOCUMENTS WITHIN THE SCOPE OF THEIR EMPLOYMENT AS REQUIRED BY ER1110-1-8152.
- THE INFORMATION DEPICTED ON THIS SURVEY MAP REPRESENTS THE RESULTS OF SURVEYS MADE ON THE DATES INDICATED AND CAN ONLY BE CONSIDERED AS INDICATING THE GENERAL CONDITIONS EXISTING AT THAT TIME. THESE CONDITIONS ARE SUBJECT TO RAPID CHANGE DUE TO SHOALING EVENTS. A PRUDENT MARINER SHOULD NOT RELY EXCLUSIVELY ON THE INFORMATION PROVIDED HERE. REQUIRED BY 33 CFR 209.325
- FOR THE MOST UP TO DATE INFORMATION PLEASE CHECK OUR WEBSITE AT: [HTTP://WWW.SWG.USACE.ARMY.MIL/MISSIONS/NAVIGATION/HYDROGRAPHIC/SURVEYS/](http://www.swg.usace.army.mil/missions/navigation/hydrographic/surveys/)
- NOAA BATHYMETRY CONTOURS PRODUCED FROM HISTORIC BATHYMETRIC (HYDROGRAPHIC) SURVEYS CONDUCTED BY THE NOAA NATIONAL OCEAN SERVICE/COAST SURVEY, AVAILABLE FROM THE NATIONAL GEOPHYSICAL DATA CENTER. SURVEYS VARY AS TO SOUNDING DENSITY, ACCURACY OF DEPTH, ACCURACY OF NAVIGATION, ZERO DATUM, DATE OF SURVEY AND TYPE OF INSTRUMENTATION.



Service Layer Credits: Sources: Esri, HERE, Garmin, Intermap, increment P Corp., GEBCO, USGS, FAO, NPS, NRCAN, GeoBase, IGN, Kadaster NL, Ordnance Survey, Esri Japan, METI, Esri China (Hong Kong), swisstopo, © OpenStreetMap contributors, and the GIS User Community
Source: Esri, DigitalGlobe, GeoEye, Earthstar Geographics, CNES/Airbus DS, USDA, USGS, AeroGRID, IGN, and the GIS User Community

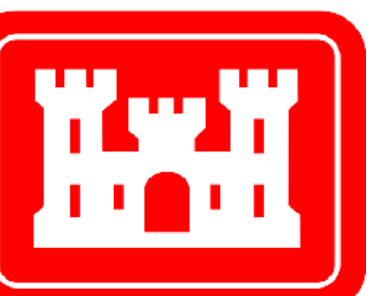
Coordinate System: NAD 1983 StatePlane Texas South FIPS 4205 Feet Projection: Lambert Conformal Conic /Datum: North American 1983	
Dredging Reach Extent	0 0.425 0.85 Miles
Hydrographic Survey Extent	0 205 410 820 Feet

Survey Date(s): 06 May 2018	Authorized Depth: -13ft.
Page: 198 of 10	Side Slope Ratio: (Rise : Run)
Scale: 1:2,400	Additional Imagery: © DigitalGlobe Inc.
Mapped by: m3odnrvk	Print Date: 5/7/2018
Additional Info:	

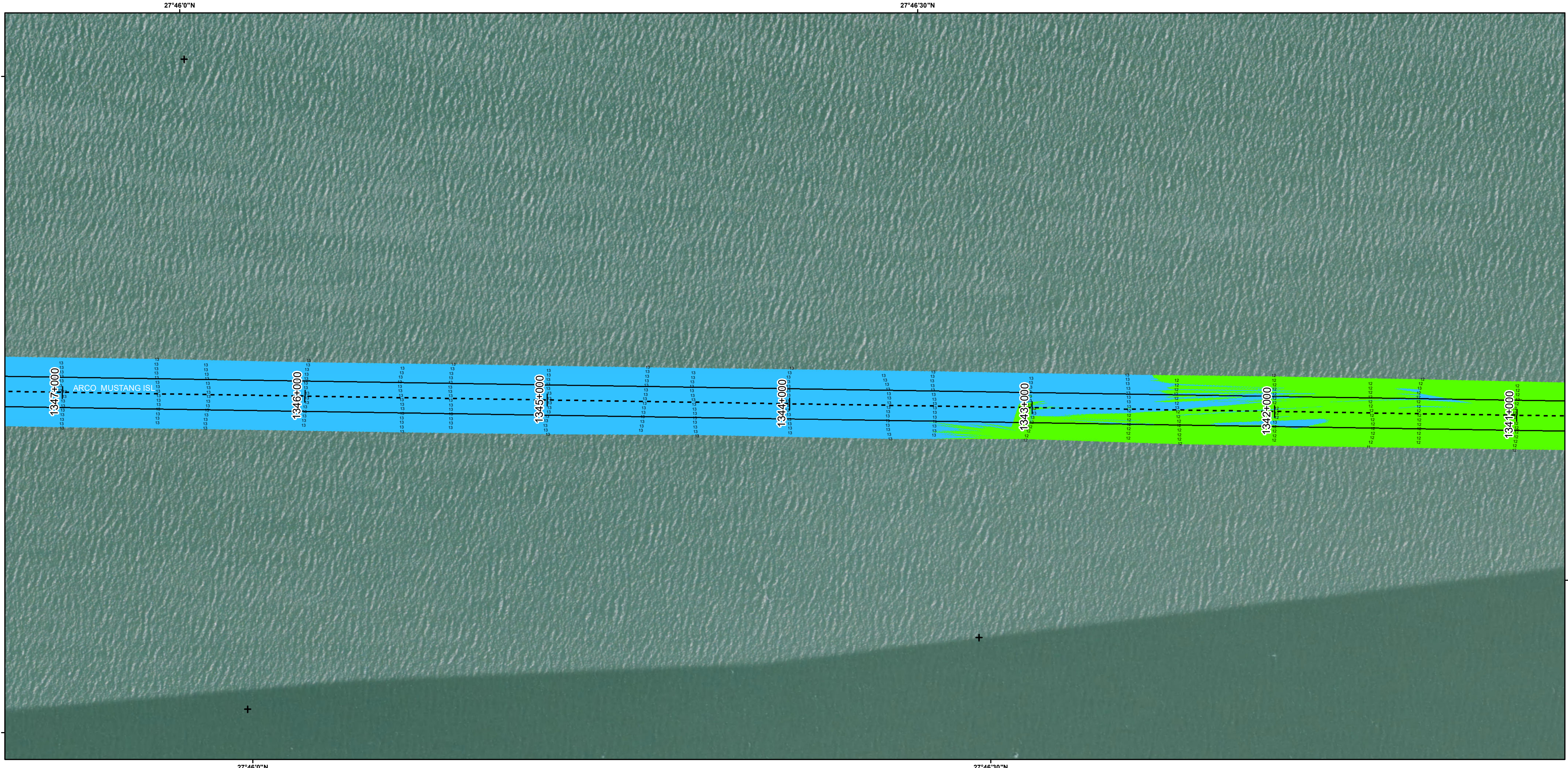
HYDROGRAPHIC SURVEY
U.S. ARMY ENGINEER DISTRICT
CORPS OF ENGINEERS
GALVESTON, TEXAS
Corpus Christi Ship Channel to Mile 547

Station: 1325+800 to 1368+860.93
GULF INTRACOASTAL WATERWAY
TEXAS

Gulf Intracoastal Waterway: Corpus Christi Ship Channel to Mile 547



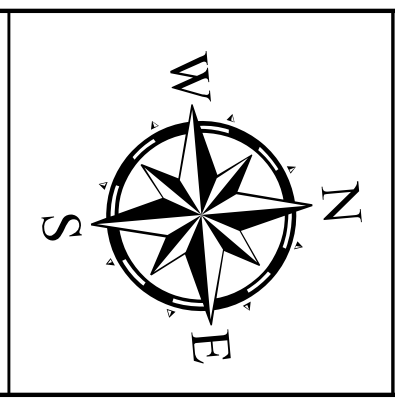
U.S. Army Corps of Engineers
Galveston District



Channel Features	Aids to Navigation	MLLW
Channel Toe	Lights	> 3
Channel Center Line	Red Side Aids	3 - 5
Channel Station Lines	Green Side Aids	5 - 7
Channel Dimensions	Mooring Buoy	7 - 9
		9 - 11
		11 - 13
		13 - 15
		15 - 17
		< 17
		NOAA Bathymetry (DREDGING REACH EXTENT)
		0 - 10
		10 - 15
		15 - 20
		20 - 25
		25 - 30
		30 - 50

NOTES:
 1. HORIZONTAL COORDINATES ARE REFERENCED TO TEXAS STATE PLANE COORDINATE SYSTEM, SOUTH CENTRAL ZONE NAD83 US SURVEY FEET.
 2. ELEVATIONS ARE REFERENCED TO MEAN LOWER LOW TIDE (MLLW) DATUM.
 3. THIS PROJECT WAS DESIGNED BY THE GALVESTON DISTRICT OF THE U.S. ARMY CORPS OF ENGINEERS. THE INITIALS AND SIGNATURES AND REGISTRATION DESIGNATIONS OF INDIVIDUALS APPEAR ON THESE PROJECT DOCUMENTS WITHIN THE SCOPE OF THEIR EMPLOYMENT AS REQUIRED BY ER1110-1-8152.

4. THE INFORMATION DEPICTED ON THIS SURVEY MAP REPRESENTS THE RESULTS OF SURVEYS MADE ON THE DATES INDICATED AND CAN ONLY BE CONSIDERED AS INDICATING THE GENERAL CONDITIONS EXISTING AT THAT TIME. THESE CONDITIONS ARE SUBJECT TO RAPID CHANGE DUE TO SHOALING EVENTS. A PRUDENT MARINER SHOULD NOT RELY EXCLUSIVELY ON THE INFORMATION PROVIDED HERE. REQUIRED BY 33 CFR 209.325
 5. FOR THE MOST UP TO DATE INFORMATION PLEASE CHECK OUR WEBSITE AT: [HTTP://WWW.SWG.USACE.ARMY.MIL/MISSIONS/NAVIGATION/HYDROGRAPHICS/SURVEYS/](http://www.swg.usace.army.mil/missions/navigation/hydrographics/surveys/)
 6. NOAA BATHYMETRY CONTOURS PRODUCED FROM HISTORIC BATHYMETRIC (HYDROGRAPHIC) SURVEYS CONDUCTED BY THE NOAA NATIONAL OCEAN SERVICE COAST SURVEY, AVAILABLE FROM THE NATIONAL GEOPHYSICAL DATA CENTER. SURVEYS VARY AS TO SOUNDING DENSITY, ACCURACY OF DEPTH, ACCURACY OF NAVIGATION, ZERO DATUM, DATE OF SURVEY AND TYPE OF INSTRUMENTATION.



Service Layer Credits: Sources: Esri, HERE, Garmin, Intermap, increment P Corp., GEBCO, USGS, FAO, NPS, NRCAN, GeoBase, IGN, Kadaster NL, Ordnance Survey, Esri Japan, METI, Esri China (Hong Kong), swisstopo, © OpenStreetMap contributors, and the GIS User Community
 Esri, Garmin, GEBCO, NOAA NGDC, and other contributors
 Source: Esri, DigitalGlobe, GeoEye, Earthstar Geographics, CNES/Airbus DS, USDA, USGS, AeroGRID, IGN, and the GIS User Community

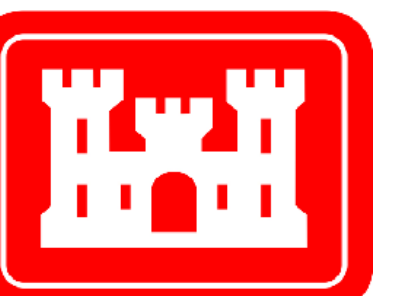
Coordinate System: NAD 1983 StatePlane Texas South FIPS 4205 Feet Projection: Lambert Conformal Conic /Datum: North American 1983	
Dredging Reach Extent	0 0.425 0.85 Miles
Hydrographic Survey Extent	0 205 410 820 Feet

Survey Date(s): 06 May 2018	Authorized Depth: -13ft.
Page: 199 of 10	Side Slope Ratio: (Rise : Run)
Scale: 1:2,400	Additional Imagery: © DigitalGlobe Inc.
Mapped by: m3odmrvk	Print Date: 5/7/2018
Additional Info:	

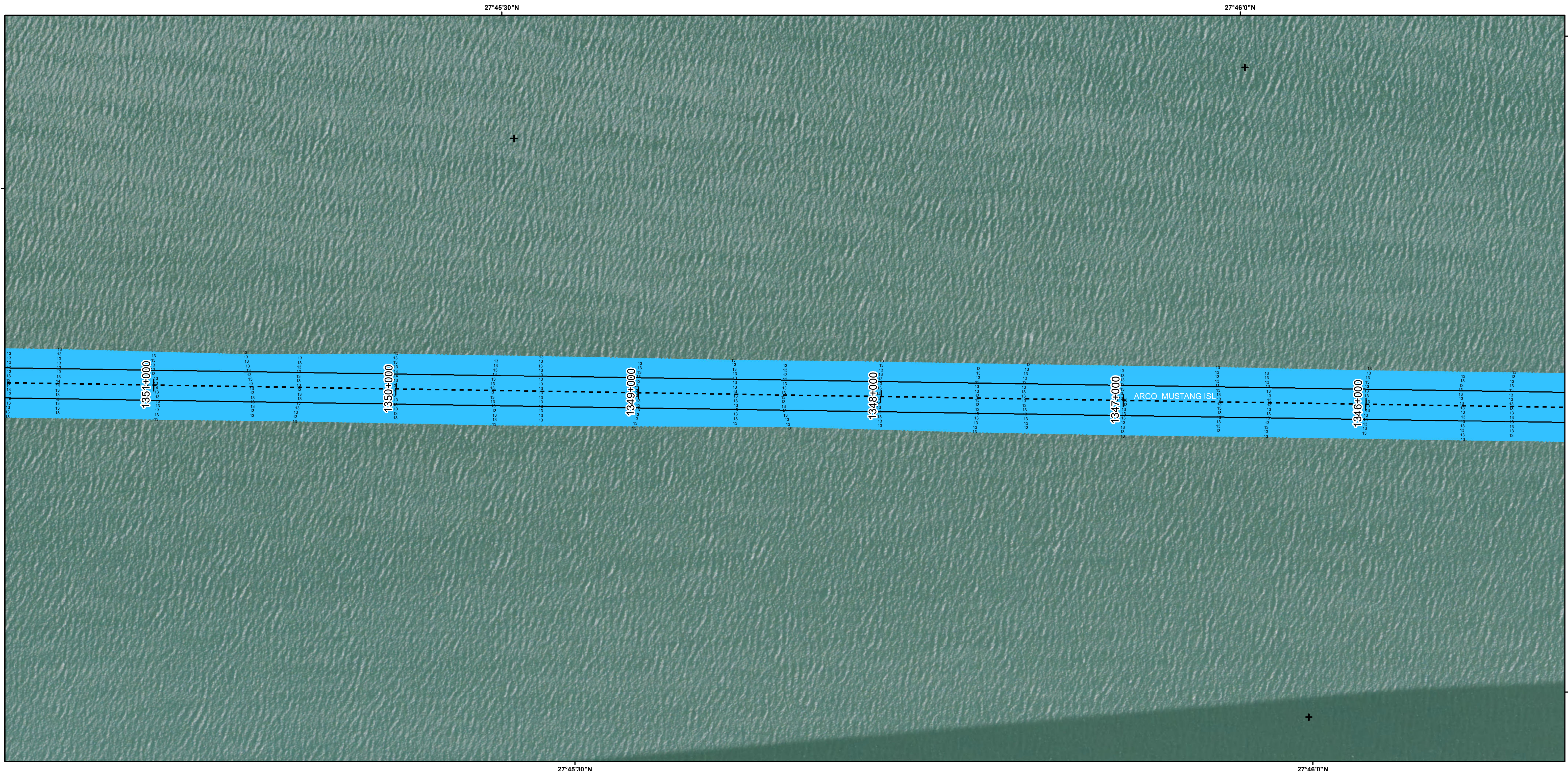
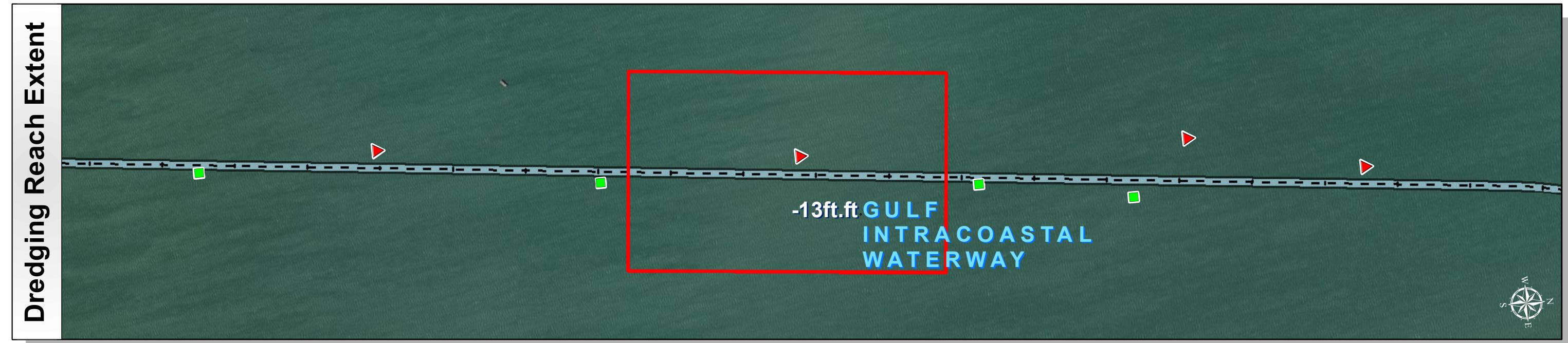
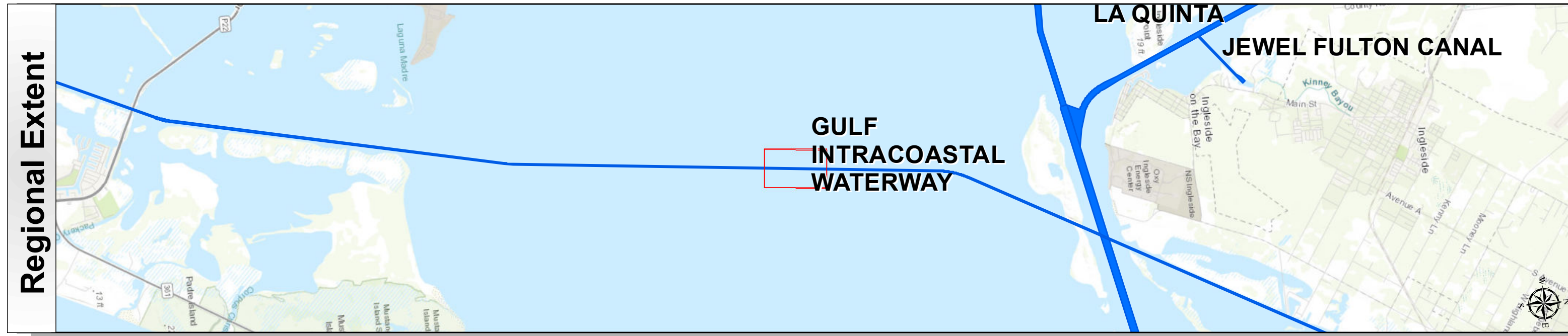
HYDROGRAPHIC SURVEY
 U.S. ARMY ENGINEER DISTRICT
 CORPS OF ENGINEERS
 GALVESTON, TEXAS
 Corpus Christi Ship Channel to Mile 547

Station: 1325+800 to 1368+860.93
GULF INTRACOASTAL WATERWAY
 TEXAS

Gulf Intracoastal Waterway: Corpus Christi Ship Channel to Mile 547



U.S. Army Corps of Engineers
Galveston District

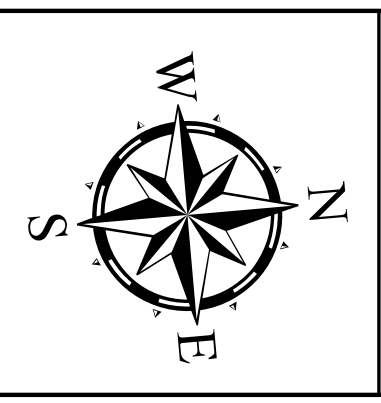


Survey Date(s): 06 May 2018	Authorized Depth: -13ft.
Page: 200 of 10	Side Slope Ratio: (Rise : Run)
Scale: 1:2,400	Additional Imagery: © DigitalGlobe Inc.
Mapped by: m3odmrvk	Print Date: 5/7/2018
Additional Info:	

Channel Features	Aids to Navigation	MLLW
<ul style="list-style-type: none"> Channel Toe Channel Center Line Channel Station Lines Channel Dimensions 	<ul style="list-style-type: none"> Lights Red Side Aids Green Side Aids Mooring Buoy 	<p>NOAA Bathymetry (DREDGING REACH EXTENT)</p> <p>0 - 10 10 - 15 15 - 20 20 - 25 25 - 30 30 - 50</p>

NOTES:

- HORIZONTAL COORDINATES ARE REFERENCED TO TEXAS STATE PLANE COORDINATE SYSTEM, SOUTH CENTRAL ZONE NAD83 US SURVEY FEET.
- ELEVATIONS ARE REFERENCED TO MEAN LOWER LOW TIDE (MLLW) DATUM.
- THIS PROJECT WAS DESIGNED BY THE GALVESTON DISTRICT OF THE U.S. ARMY CORPS OF ENGINEERS. THE INITIALS AND SIGNATURES AND REGISTRATION DESIGNATIONS OF INDIVIDUALS APPEAR ON THESE PROJECT DOCUMENTS WITHIN THE SCOPE OF THEIR EMPLOYMENT AS REQUIRED BY ER1110-1-8152.
- THE INFORMATION DEPICTED ON THIS SURVEY MAP REPRESENTS THE RESULTS OF SURVEYS MADE ON THE DATES INDICATED AND CAN ONLY BE CONSIDERED AS INDICATING THE GENERAL CONDITIONS EXISTING AT THAT TIME. THESE CONDITIONS ARE SUBJECT TO RAPID CHANGE DUE TO SHOALING EVENTS. A PRUDENT MARINER SHOULD NOT RELY EXCLUSIVELY ON THE INFORMATION PROVIDED HERE. REQUIRED BY 33 CFR 209.325
- FOR THE MOST UP TO DATE INFORMATION PLEASE CHECK OUR WEBSITE AT: [HTTP://WWW.SWG.USACE.ARMY.MIL/MISSIONS/NAVIGATION/HYDROGRAPHICS/SURVEYS/](http://www.swg.usace.army.mil/missions/navigation/hydrographics/surveys/)
- NOAA BATHYMETRY CONTOURS PRODUCED FROM HISTORIC BATHYMETRIC (HYDROGRAPHIC) SURVEYS CONDUCTED BY THE NOAA NATIONAL OCEAN SERVICE/COAST SURVEY, AVAILABLE FROM THE NATIONAL GEOPHYSICAL DATA CENTER. SURVEYS VARY AS TO SOUNDING DENSITY, ACCURACY OF DEPTH, ACCURACY OF NAVIGATION, ZERO DATUM, DATE OF SURVEY AND TYPE OF INSTRUMENTATION.



Service Layer Credits: Sources: Esri, HERE, Garmin, Intermap, increment P Corp., GEBCO, USGS, FAO, NPS, NRCAN, GeoBase, IGN, Kadaster NL, Ordnance Survey, Esri Japan, METI, Esri China (Hong Kong), swisstopo, © OpenStreetMap contributors, and the GIS User Community

Source: Esri, DigitalGlobe, GeoEye, Earthstar Geographics, CNES/Airbus DS, USDA, USGS, AeroGRID, IGN, and the GIS User Community

Coordinate System: NAD 1983 StatePlane Texas South FIPS 4205 Feet
Projection: Lambert Conformal Conic /Datum: North American 1983

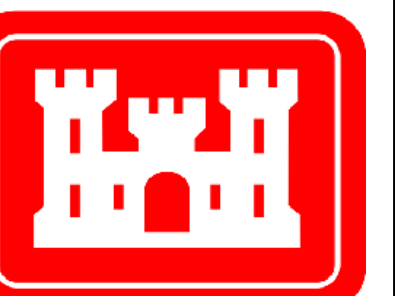
Dredging Reach Extent
0 0.425 0.85 Miles

Hydrographic Survey Extent
0 205 410 820 Feet

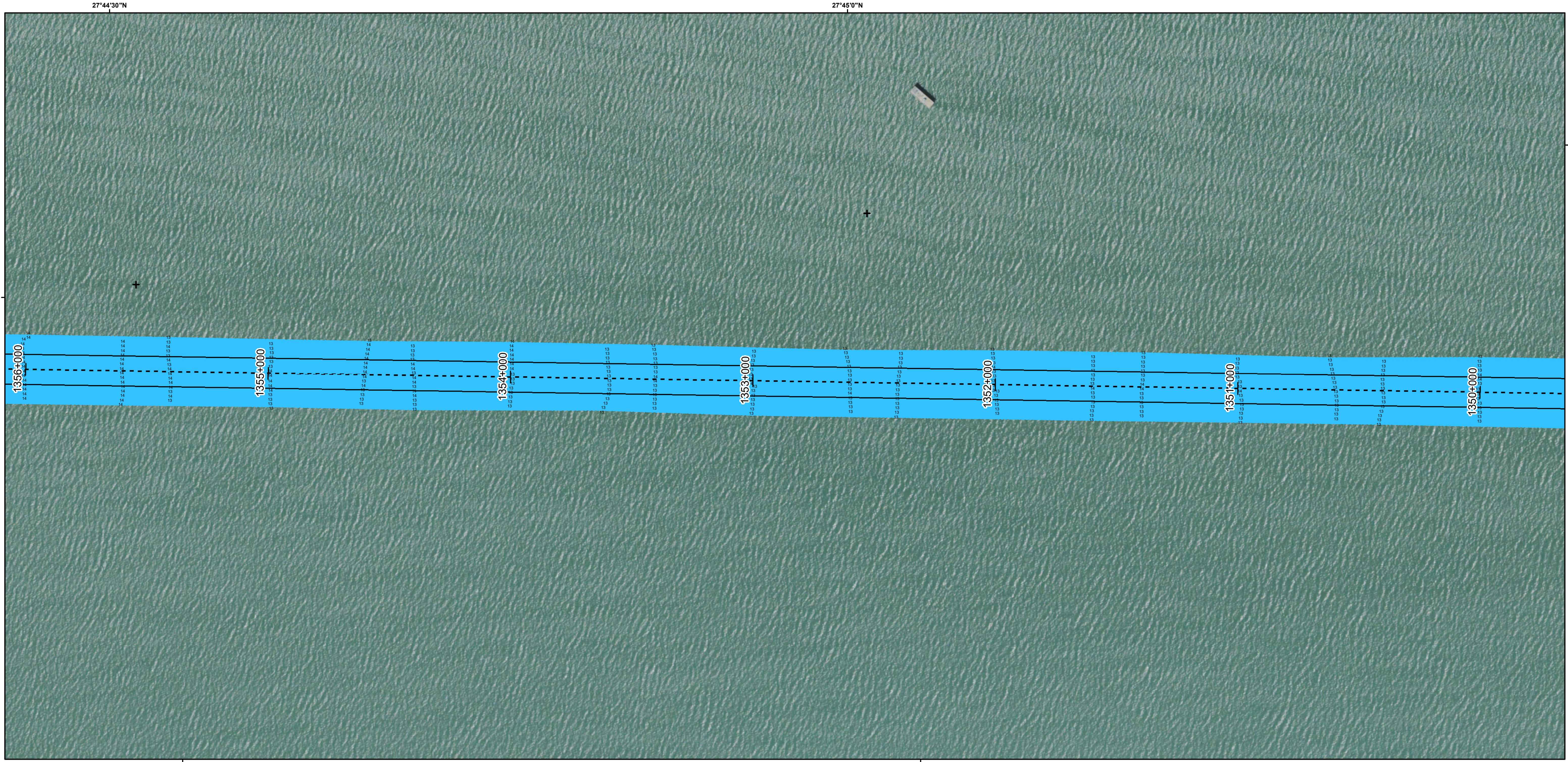
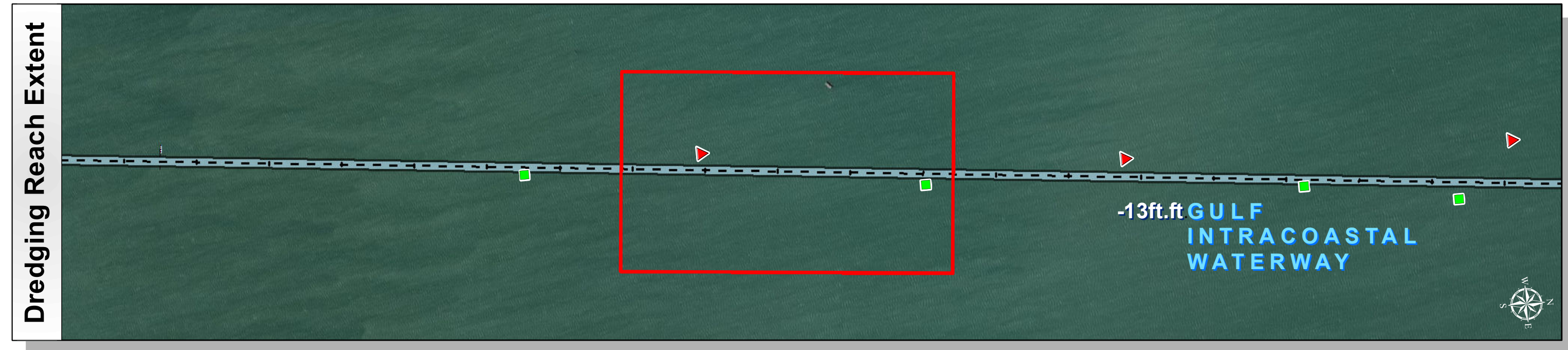
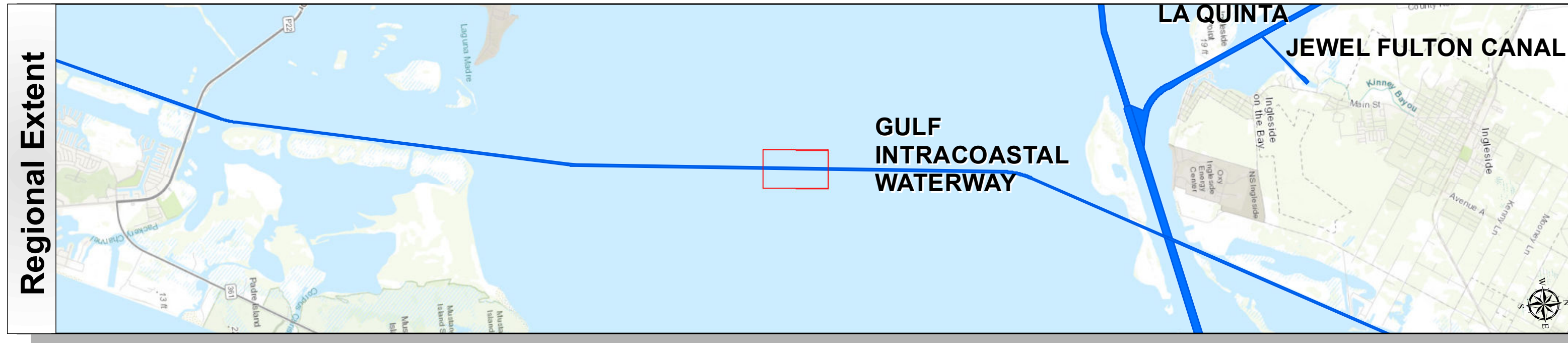
HYDROGRAPHIC SURVEY
U.S. ARMY ENGINEER DISTRICT
CORPS OF ENGINEERS
GALVESTON, TEXAS
Corpus Christi Ship Channel to Mile 547

Station: 1325+800 to 1368+860.93
GULF INTRACOASTAL WATERWAY
TEXAS

Gulf Intracoastal Waterway: Corpus Christi Ship Channel to Mile 547



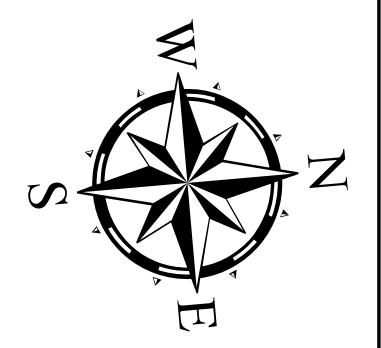
U.S. Army Corps of Engineers
Galveston District



Channel Features	Aids to Navigation	MLLW
Channel Toe	Lights	> 3
Channel Center Line	Red Side Aids	3 - 5
Channel Station Lines	Green Side Aids	5 - 7
Channel Dimensions	Mooring Buoy	7 - 9
		9 - 11
		11 - 13
		13 - 15
		15 - 17
		< 17
		NOAA Bathymetry (DREDGING REACH EXTENT)
		0 - 10 10 - 15 15 - 20 20 - 25 25 - 30 30 - 50

NOTES:
 1. HORIZONTAL COORDINATES ARE REFERENCED TO TEXAS STATE PLANE COORDINATE SYSTEM, SOUTH CENTRAL ZONE NAD83 US SURVEY FEET.
 2. ELEVATIONS ARE REFERENCED TO MEAN LOWER LOW TIDE (MLLW) DATUM.
 3. THIS PROJECT WAS DESIGNED BY THE GALVESTON DISTRICT OF THE U.S. ARMY CORPS OF ENGINEERS. THE INITIALS AND SIGNATURES AND REGISTRATION DESIGNATIONS OF INDIVIDUALS APPEAR ON THESE PROJECT DOCUMENTS WITHIN THE SCOPE OF THEIR EMPLOYMENT AS REQUIRED BY ER1110-1-8152.

4. THE INFORMATION DEPICTED ON THIS SURVEY MAP REPRESENTS THE RESULTS OF SURVEYS MADE ON THE DATES INDICATED AND CAN ONLY BE CONSIDERED AS INDICATING THE GENERAL CONDITIONS EXISTING AT THAT TIME. THESE CONDITIONS ARE SUBJECT TO RAPID CHANGE DUE TO SHOALING EVENTS. A PRUDENT MARINER SHOULD NOT RELY EXCLUSIVELY ON THE INFORMATION PROVIDED HERE. REQUIRED BY 33 CFR 209.325
 5. FOR THE MOST UP TO DATE INFORMATION PLEASE CHECK OUR WEBSITE AT: [HTTP://WWW.SWG.USACE.ARMY.MIL/MISSIONS/NAVIGATION/HYDROGRAPHICS/SURVEYS/](http://www.swg.usace.army.mil/missions/navigation/hydrographics/surveys/)
 6. NOAA BATHYMETRY CONTOURS PRODUCED FROM HISTORIC BATHYMETRIC (HYDROGRAPHIC) SURVEYS CONDUCTED BY THE NOAA NATIONAL OCEAN SERVICE/COAST SURVEY, AVAILABLE FROM THE NATIONAL GEOPHYSICAL DATA CENTER. SURVEYS VARY AS TO SOUNDING DENSITY, ACCURACY OF DEPTH, ACCURACY OF NAVIGATION, ZERO DATUM, DATE OF SURVEY AND TYPE OF INSTRUMENTATION.



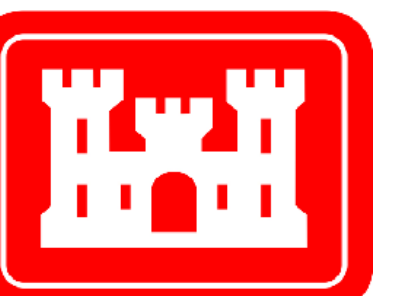
Service Layer Credits: Sources: Esri, HERE, Garmin, Intermap, increment P Corp., GEBCO, USGS, FAO, NPS, NRCAN, GeoBase, IGN, Kadaster NL, Ordnance Survey, Esri Japan, METI, Esri China (Hong Kong), swisstopo, © OpenStreetMap contributors, and the GIS User Community
 Source: Esri, DigitalGlobe, GeoEye, Earthstar Geographics, CNES/Airbus DS, USDA, USGS, AeroGRID, IGN, and the GIS User Community

Coordinate System: NAD 1983 StatePlane Texas South FIPS 4205 Feet Projection: Lambert Conformal Conic /Datum: North American 1983	
Dredging Reach Extent	0 0.425 0.85 Miles
Hydrographic Survey Extent	0 205 410 820 Feet

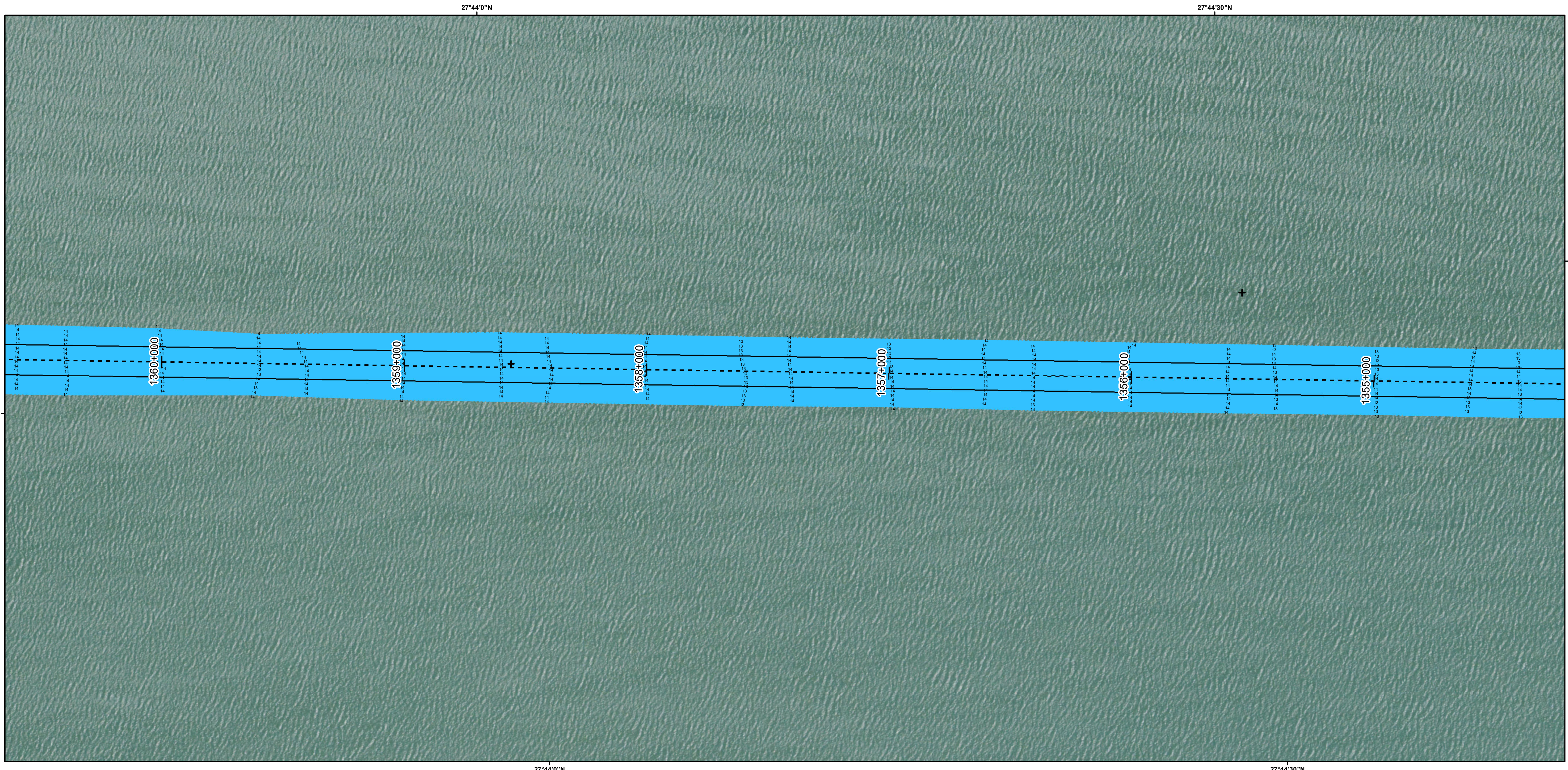
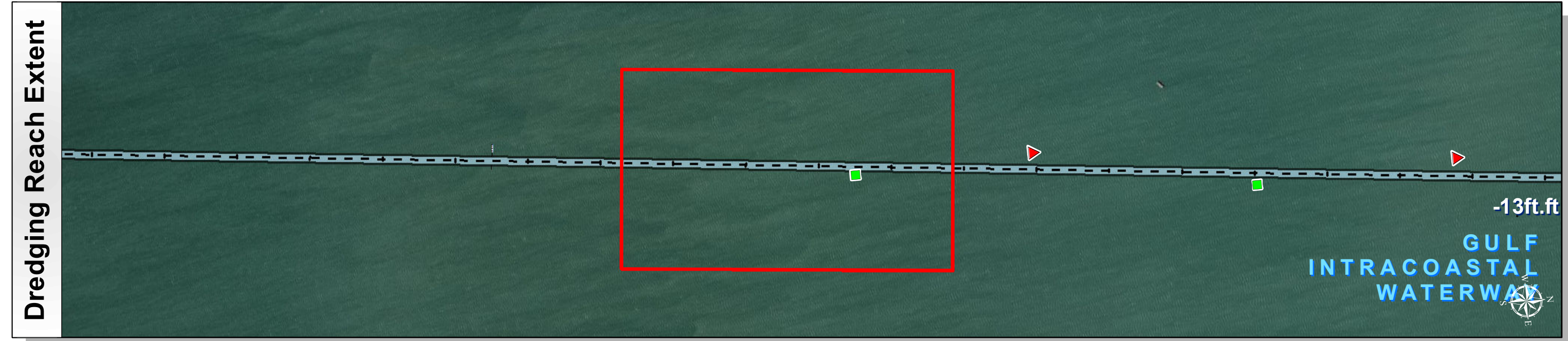
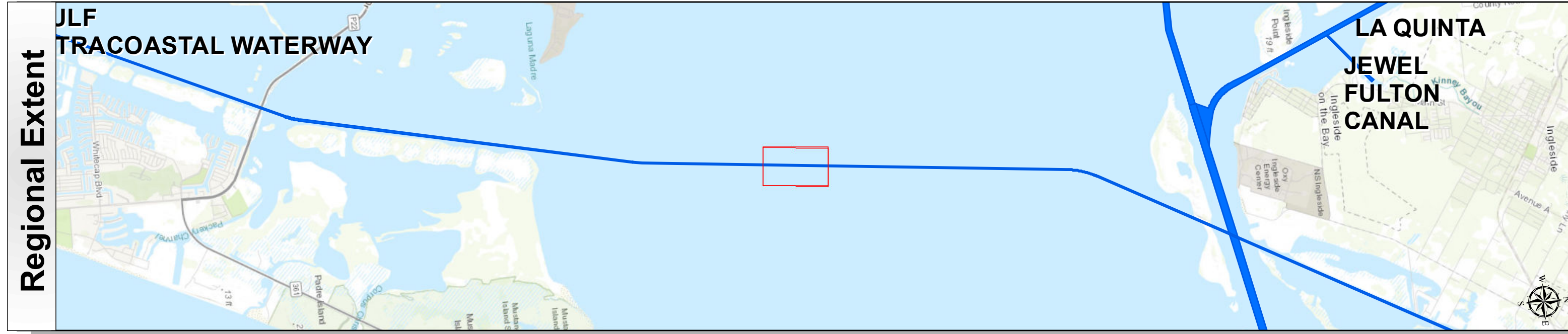
Survey Date(s): 06 May 2018	Authorized Depth: -13ft.
Page: 201 of 10	Side Slope Ratio: (Rise : Run)
Scale: 1:2,400	Additional Imagery: © DigitalGlobe Inc.
Mapped by: m3odnrvk	Print Date: 5/7/2018
Additional Info:	

HYDROGRAPHIC SURVEY
 U.S. ARMY ENGINEER DISTRICT
 CORPS OF ENGINEERS
 GALVESTON, TEXAS
 Corpus Christi Ship Channel to Mile 547
Station: 1325+800 to 1368+860.93
GULF INTRACOASTAL WATERWAY
 , TEXAS

Gulf Intracoastal Waterway: Corpus Christi Ship Channel to Mile 547



U.S. Army Corps of Engineers
Galveston District

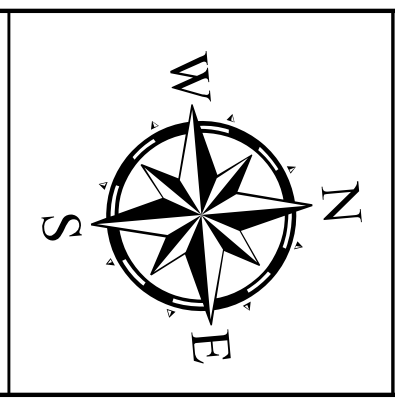


Channel Features	Aids to Navigation	MLLW
<ul style="list-style-type: none"> Channel Toe Channel Center Line Channel Station Lines Channel Dimensions 	<ul style="list-style-type: none"> Lights Red Side Aids Green Side Aids Mooring Buoy 	<p>NOAA Bathymetry (DREDGING REACH EXTENT)</p> <p>0 - 10 10 - 15 15 - 20 20 - 25 25 - 30 30 - 50</p>

NOTES:

- HORIZONTAL COORDINATES ARE REFERENCED TO TEXAS STATE PLANE COORDINATE SYSTEM, SOUTH CENTRAL ZONE NAD83 US SURVEY FEET.
- ELEVATIONS ARE REFERENCED TO MEAN LOWER LOW TIDE (MLLW) DATUM.
- THIS PROJECT WAS DESIGNED BY THE GALVESTON DISTRICT OF THE U.S. ARMY CORPS OF ENGINEERS. THE INITIALS AND SIGNATURES AND REGISTRATION DESIGNATIONS OF INDIVIDUALS APPEAR ON THESE PROJECT DOCUMENTS WITHIN THE SCOPE OF THEIR EMPLOYMENT AS REQUIRED BY ER1110-1-8152.

- THE INFORMATION DEPICTED ON THIS SURVEY MAP REPRESENTS THE RESULTS OF SURVEYS MADE ON THE DATES INDICATED AND CAN ONLY BE CONSIDERED AS INDICATING THE GENERAL CONDITIONS EXISTING AT THAT TIME. THESE CONDITIONS ARE SUBJECT TO RAPID CHANGE DUE TO SHOALING EVENTS. A PRUDENT MARINER SHOULD NOT RELY EXCLUSIVELY ON THE INFORMATION PROVIDED HERE. REQUIRED BY 33 CFR 209.325
- FOR THE MOST UP TO DATE INFORMATION PLEASE CHECK OUR WEBSITE AT: [HTTP://WWW.SWG.USACE.ARMY.MIL/MISSIONS/NAVIGATION/HYDROGRAPHIC/SURVEYS/](http://www.swg.usace.army.mil/missions/navigation/hydrographic/surveys/)
- NOAA BATHYMETRY CONTOURS PRODUCED FROM HISTORIC BATHYMETRIC (HYDROGRAPHIC) SURVEYS CONDUCTED BY THE NOAA NATIONAL OCEAN SERVICE/COAST SURVEY, AVAILABLE FROM THE NATIONAL GEOPHYSICAL DATA CENTER. SURVEYS VARY AS TO SOUNDING DENSITY, ACCURACY OF DEPTH, ACCURACY OF NAVIGATION, ZERO DATUM, DATE OF SURVEY AND TYPE OF INSTRUMENTATION.



Service Layer Credits: Sources: Esri, HERE, Garmin, Intermap, increment P Corp., GEBCO, USGS, FAO, NPS, NRCAN, GeoBase, IGN, Kadaster NL, Ordnance Survey, Esri Japan, METI, Esri China (Hong Kong), swisstopo, © OpenStreetMap contributors, and the GIS User Community

Source: Esri, DigitalGlobe, GeoEye, Earthstar Geographics, CNES/Airbus DS, USDA, USGS, AeroGRID, IGN, and the GIS User Community

Coordinate System: NAD 1983 StatePlane Texas South FIPS 4205 Feet
Projection: Lambert Conformal Conic /Datum: North American 1983

Dredging Reach Extent
0 0.425 0.85 Miles

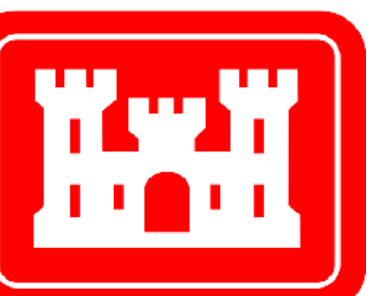
Hydrographic Survey Extent
0 205 410 820 Feet

Survey Date(s): 06 May 2018	Authorized Depth: -13ft.
Page: 202 of 10	Side Slope Ratio: (Rise : Run)
Scale: 1:2,400	Additional Imagery: © DigitalGlobe Inc.
Mapped by: m3odnrnk	Print Date: 5/7/2018
Additional Info:	

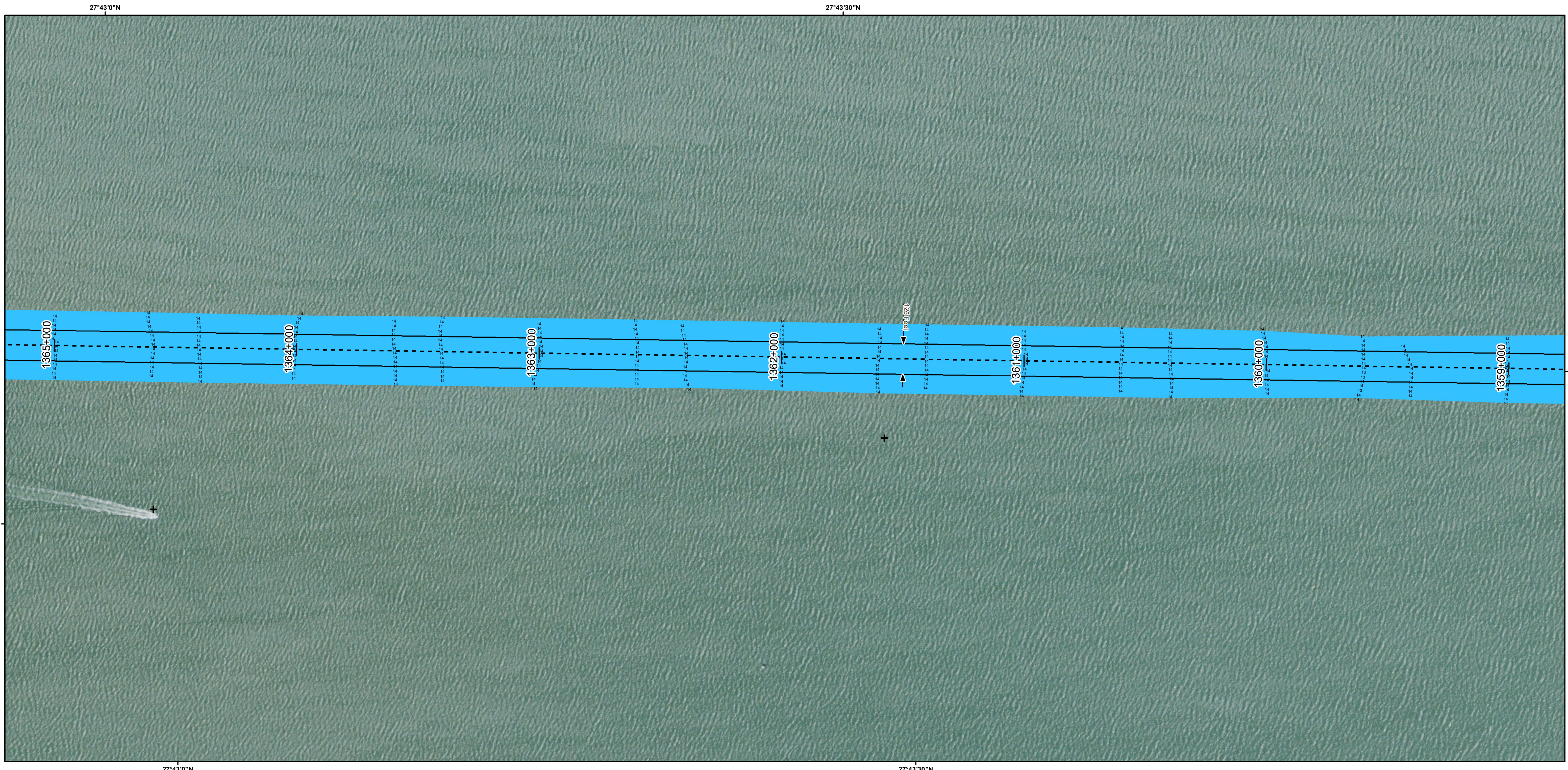
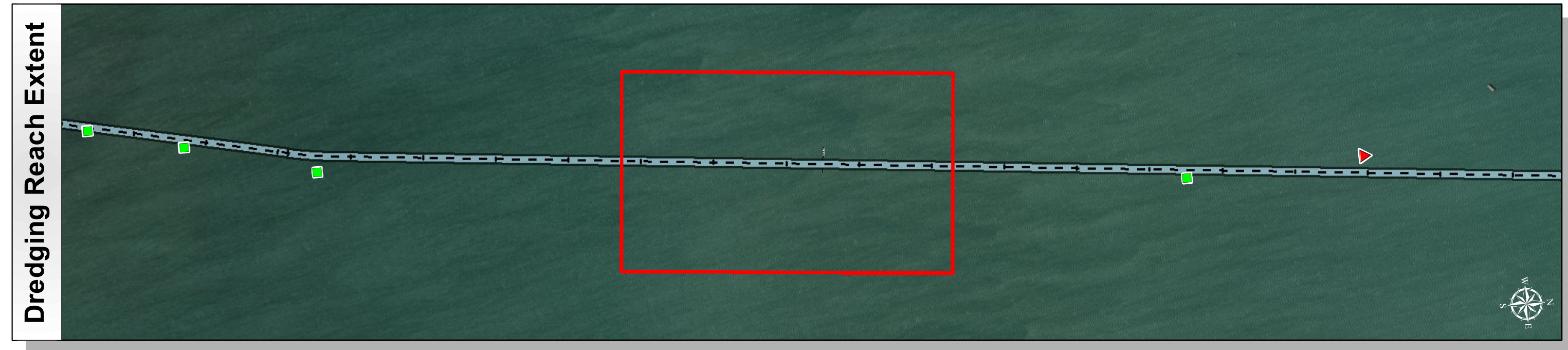
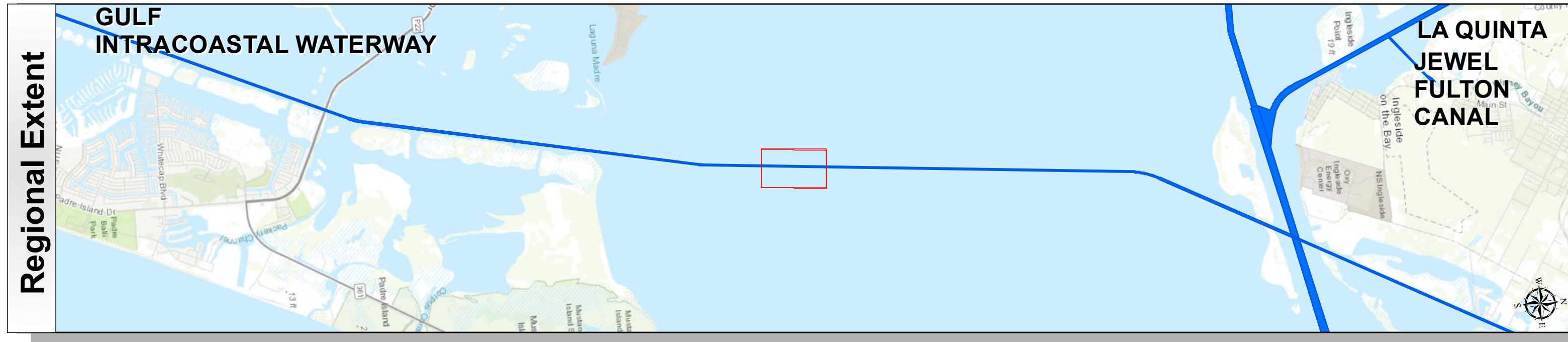
HYDROGRAPHIC SURVEY
U.S. ARMY ENGINEER DISTRICT
CORPS OF ENGINEERS
GALVESTON, TEXAS
Corpus Christi Ship Channel to Mile 547

Station: 1325+800 to 1368+860.93
GULF INTRACOASTAL WATERWAY
, TEXAS

Gulf Intracoastal Waterway: Corpus Christi Ship Channel to Mile 547



U.S. Army Corps of Engineers
Galveston District



Channel Features	Aids to Navigation	MLLW
— Channel Toe	★ Lights	> 3
- - - Channel Center Line	▲ Red Side Aids	3 - 5
— Channel Station Lines	■ Green Side Aids	5 - 7
↔ Channel Dimensions	◆ Mooring Buoy	7 - 9
		9 - 11
		11 - 13
		13 - 15
		15 - 17
		< 17
		0 - 10
		10 - 15
		15 - 20
		20 - 25
		25 - 30
		30 - 50

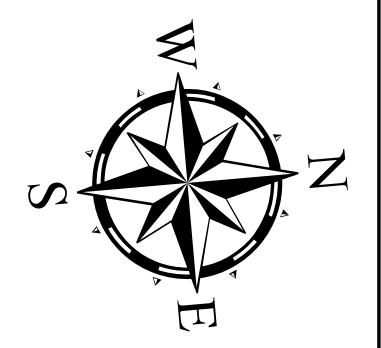
NOTES:

- HORIZONTAL COORDINATES ARE REFERENCED TO TEXAS STATE PLANE COORDINATE SYSTEM, SOUTH CENTRAL ZONE NAD83 US SURVEY FEET.
- ELEVATIONS ARE REFERENCED TO MEAN LOWER LOW TIDE (MLLW) DATUM.
- THIS PROJECT WAS DESIGNED BY THE GALVESTON DISTRICT OF THE U.S. ARMY CORPS OF ENGINEERS. THE INITIALS AND SIGNATURES AND REGISTRATION DESIGNATIONS OF INDIVIDUALS APPEAR ON THESE PROJECT DOCUMENTS WITHIN THE SCOPE OF THEIR EMPLOYMENT AS REQUIRED BY ER1110-1-8152.

4. THE INFORMATION DEPICTED ON THIS SURVEY MAP REPRESENTS THE RESULTS OF SURVEYS MADE ON THE DATES INDICATED AND CAN ONLY BE CONSIDERED AS INDICATING THE GENERAL CONDITIONS EXISTING AT THAT TIME. THESE CONDITIONS ARE SUBJECT TO RAPID CHANGE DUE TO SHOALING EVENTS. A PRUDENT MARINER SHOULD NOT RELY EXCLUSIVELY ON THE INFORMATION PROVIDED HERE. REQUIRED BY 33 CFR 209.325

5. FOR THE MOST UP TO DATE INFORMATION PLEASE CHECK OUR WEBSITE AT: [HTTP://WWW.SWG.USACE.ARMY.MIL/MISSIONS/NAVIGATION/HYDROGRAPHICSURVEYS/](http://www.swg.usace.army.mil/missions/navigation/hydrographicsurveys/)

6. NOAA BATHYMETRY CONTOURS PRODUCED FROM HISTORIC BATHYMETRIC (HYDROGRAPHIC) SURVEYS CONDUCTED BY THE NOAA NATIONAL OCEAN SERVICE/OCEAN SURVEILLATION DIVISION, NATIONAL GEOPHYSICAL DATA CENTER. SURVEYS VARY AS TO SOUNDING DENSITY, ACCURACY OF DEPTH, ACCURACY OF NAVIGATION, ZERO DATUM, DATE OF SURVEY AND TYPE OF INSTRUMENTATION.



Service Layer Credits: Sources: Esri, HERE, Garmin, Intermap, increment P Corp., GEBCO, USGS, FAO, NPS, NRCAN, GeoBase, IGN, Kadaster NL, Ordnance Survey, Esri Japan, METI, Esri China (Hong Kong), swisstopo, © OpenStreetMap contributors, and the GIS User Community

Source: Esri, DigitalGlobe, GeoEye, Earthstar Geographics, CNES/Airbus DS, USDA, USGS, AeroGRID, IGN, and the GIS User Community

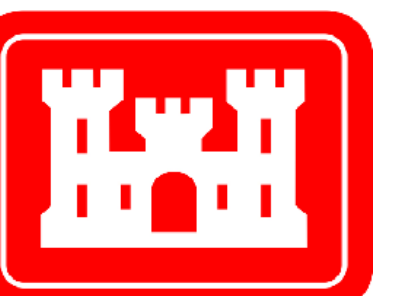
Coordinate System: NAD 1983 StatePlane Texas South FIPS 4205 Feet Projection: Lambert Conformal Conic /Datum: North American 1983	
Dredging Reach Extent	0 0.425 0.85 Miles
Hydrographic Survey Extent	0 205 410 820 Feet

Survey Date(s): 06 May 2018	Authorized Depth: -13ft.
Page: 203 of 10	Side Slope Ratio: (Rise : Run)
Scale: 1:2,400	Additional Imagery: © DigitalGlobe Inc.
Mapped by: m3odmrvk	Print Date: 5/7/2018
Additional Info:	

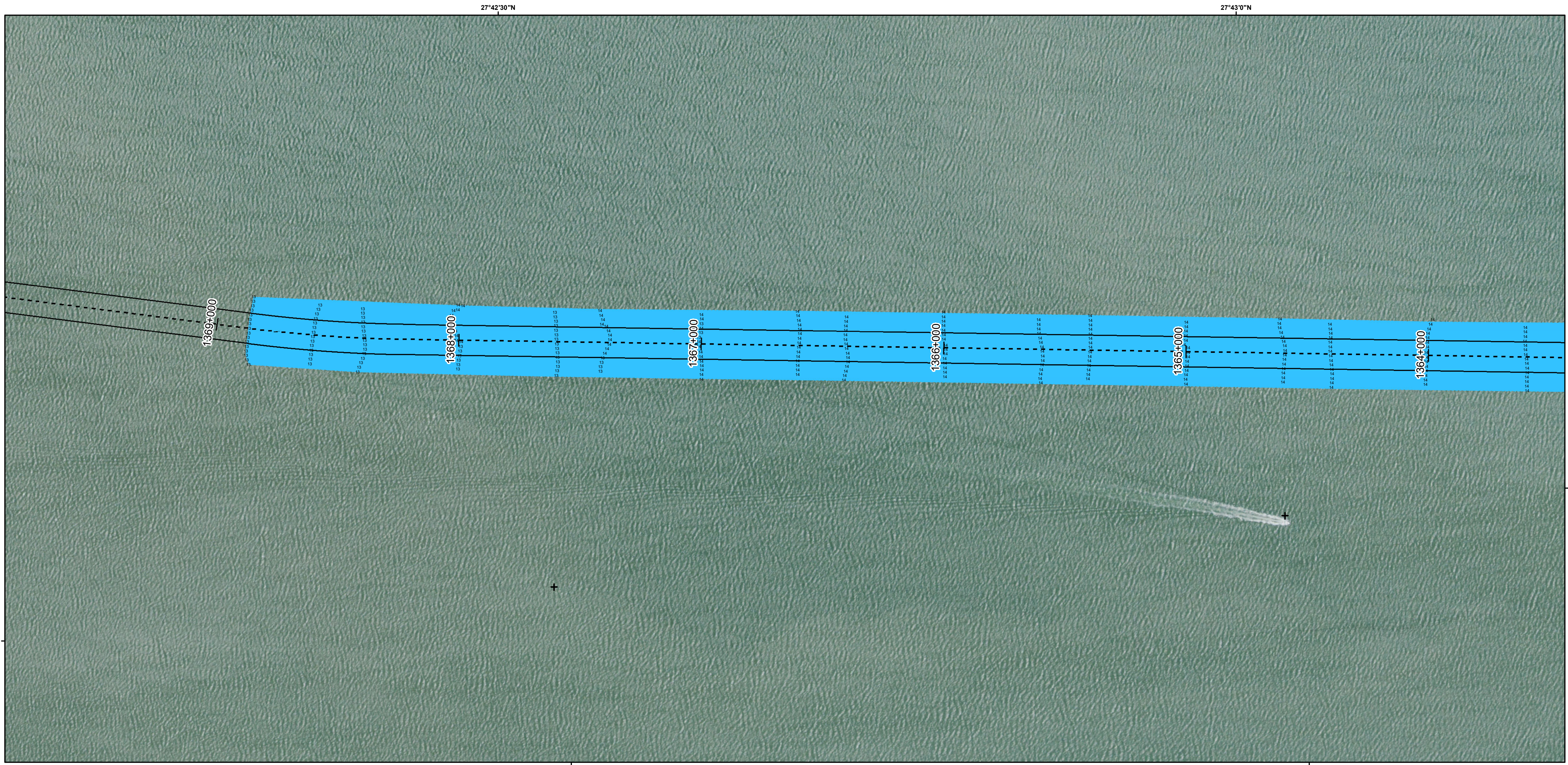
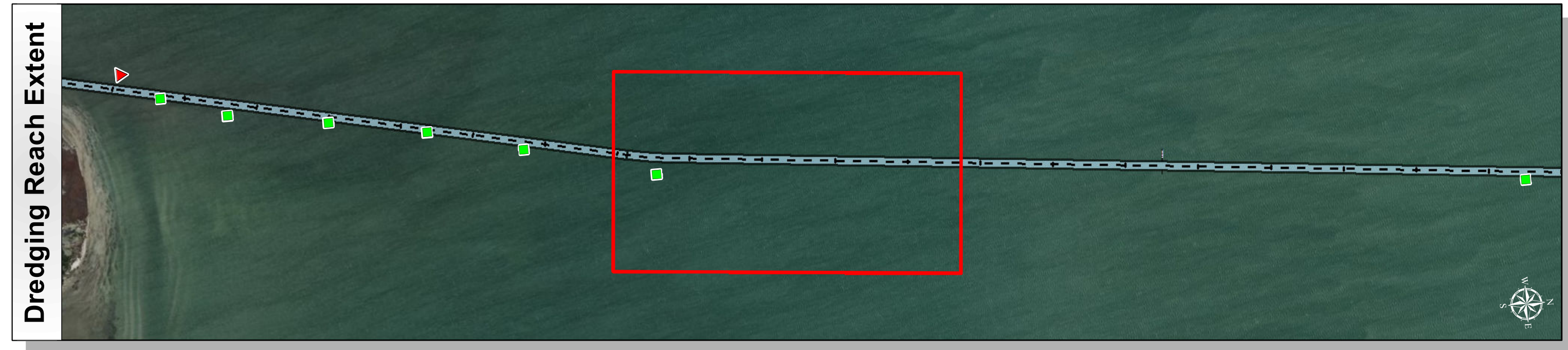
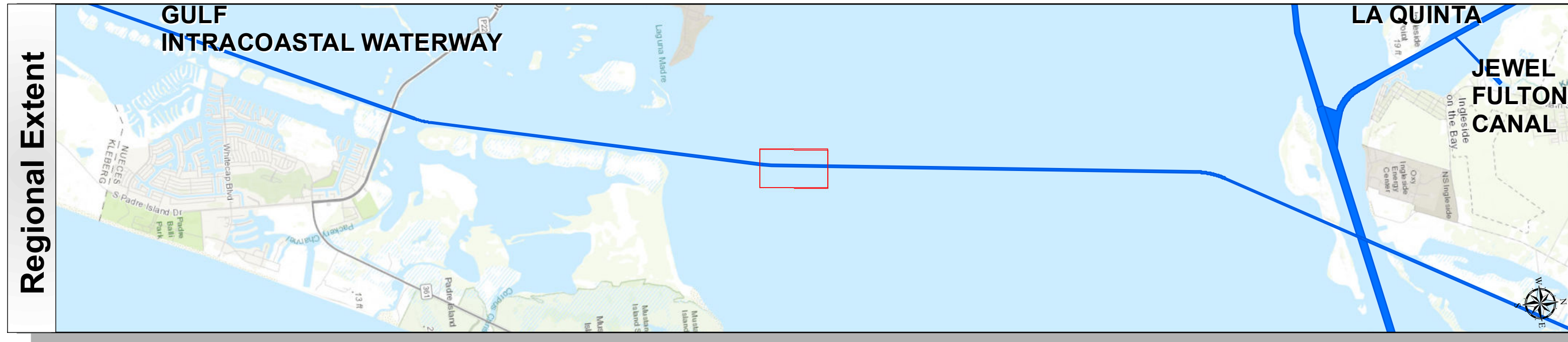
HYDROGRAPHIC SURVEY
U.S. ARMY ENGINEER DISTRICT
CORPS OF ENGINEERS
GALVESTON, TEXAS
Corpus Christi Ship Channel to Mile 547

Station: 1325+800 to 1368+860.93
GULF INTRACOASTAL WATERWAY
, TEXAS

Gulf Intracoastal Waterway: Corpus Christi Ship Channel to Mile 547



U.S. Army Corps of Engineers
Galveston District

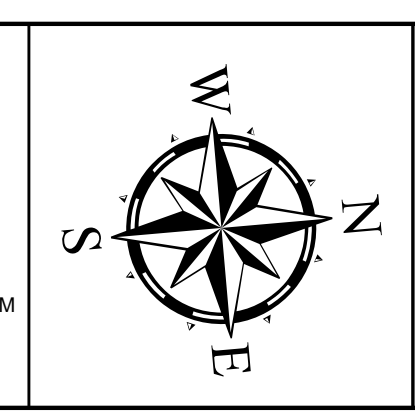


Survey Date(s): 06 May 2018	Authorized Depth: -13ft.
Page: 204 of 10	Side Slope Ratio: (Rise : Run)
Scale: 1:2,400	Additional Imagery: © DigitalGlobe Inc.
Mapped by: m3odmrvk	Print Date: 5/7/2018
Additional Info:	

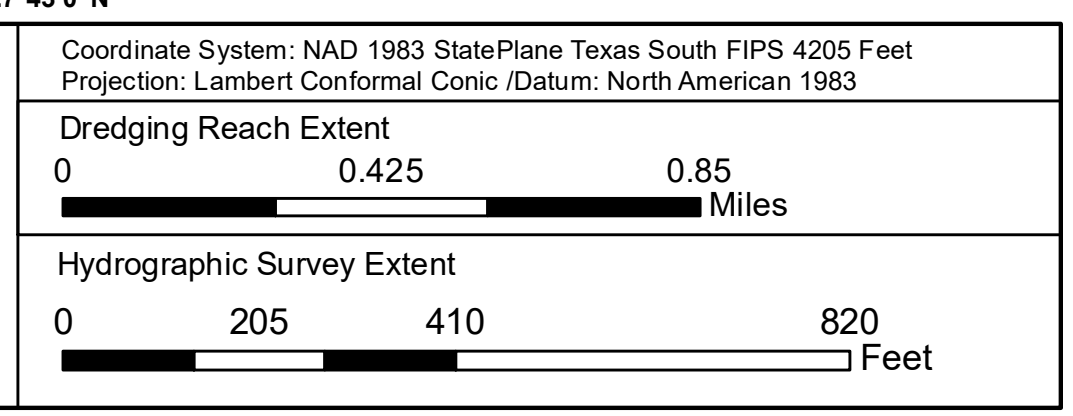
Channel Features	Aids to Navigation	MLLW
<ul style="list-style-type: none"> Channel Toe Channel Center Line Channel Station Lines Channel Dimensions 	<ul style="list-style-type: none"> Lights Red Side Aids Green Side Aids Mooring Buoy 	<p>NOAA Bathymetry (DREDGING REACH EXTENT)</p> <p>0 - 10 10 - 15 15 - 20 20 - 25 25 - 30 30 - 50</p>

NOTES:

- HORIZONTAL COORDINATES ARE REFERENCED TO TEXAS STATE PLANE COORDINATE SYSTEM, SOUTH CENTRAL ZONE NAD83 US SURVEY FEET.
- ELEVATIONS ARE REFERENCED TO MEAN LOWER LOW TIDE (MLLW) DATUM.
- THIS PROJECT WAS DESIGNED BY THE GALVESTON DISTRICT OF THE U.S. ARMY CORPS OF ENGINEERS. THE INITIALS AND SIGNATURES AND REGISTRATION DESIGNATIONS OF INDIVIDUALS APPEAR ON THESE PROJECT DOCUMENTS WITHIN THE SCOPE OF THEIR EMPLOYMENT AS REQUIRED BY ER1110-1-8152.
- THE INFORMATION DEPICTED ON THIS SURVEY MAP REPRESENTS THE RESULTS OF SURVEYS MADE ON THE DATES INDICATED AND CAN ONLY BE CONSIDERED AS INDICATING THE GENERAL CONDITIONS EXISTING AT THAT TIME. THESE CONDITIONS ARE SUBJECT TO RAPID CHANGE DUE TO SHOALING EVENTS. A PRUDENT MARINER SHOULD NOT RELY EXCLUSIVELY ON THE INFORMATION PROVIDED HERE. REQUIRED BY 33 CFR 209.325
- FOR THE MOST UP TO DATE INFORMATION PLEASE CHECK OUR WEBSITE AT: [HTTP://WWW.SWG.USACE.ARMY.MIL/MISSIONS/NAVIGATION/HYDROGRAPHIC-SURVEYS/](http://www.swg.usace.army.mil/missions/navigation/hydrographic-surveys/)
- NOAA BATHYMETRY CONTOURS PRODUCED FROM HISTORIC BATHYMETRIC (HYDROGRAPHIC) SURVEYS CONDUCTED BY THE NOAA NATIONAL OCEAN SERVICE/COAST SURVEY, AVAILABLE FROM THE NATIONAL GEOPHYSICAL DATA CENTER. SURVEYS VARY AS TO SOUNDING DENSITY, ACCURACY OF DEPTH, ACCURACY OF NAVIGATION, ZERO DATUM, DATE OF SURVEY AND TYPE OF INSTRUMENTATION.



Service Layer Credits: Sources: Esri, HERE, Garmin, Intermap, increment P Corp., GEBCO, USGS, FAO, NPS, NRCAN, GeoBase, IGN, Kadaster NL, Ordnance Survey, Esri Japan, METI, Esri China (Hong Kong), swisstopo, © OpenStreetMap contributors, and the GIS User Community
 Esri, Garmin, GEBCO, NOAA NGDC, and other contributors
 Source: Esri, DigitalGlobe, GeoEye, Earthstar Geographics, CNES/Airbus DS, USDA, USGS, AeroGRID, IGN, and the GIS User Community



HYDROGRAPHIC SURVEY
 U.S. ARMY ENGINEER DISTRICT
 CORPS OF ENGINEERS
 GALVESTON, TEXAS
 Corpus Christi Ship Channel to Mile 547

Station: 1325+800 to 1368+860.93
GULF INTRACOASTAL WATERWAY
 TEXAS