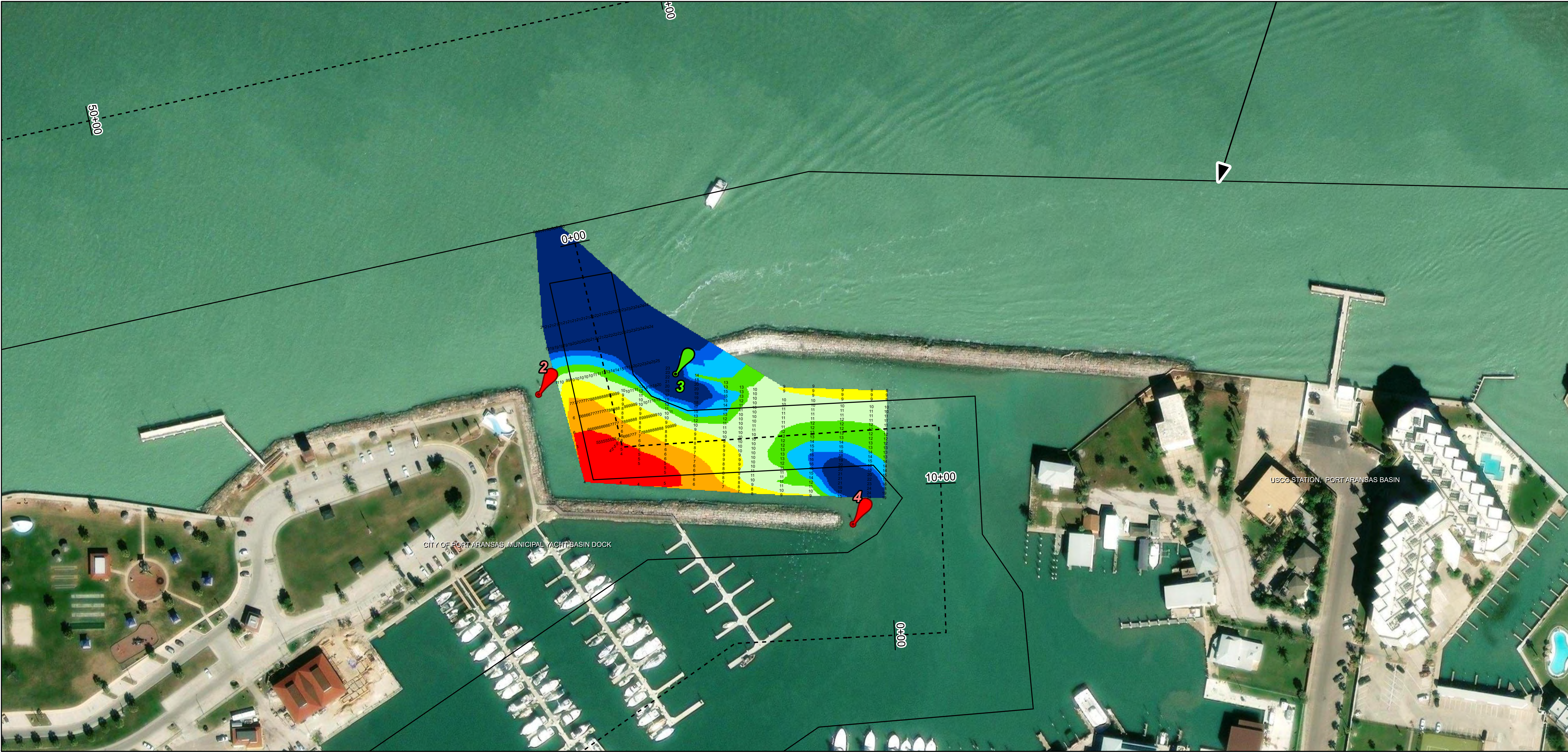
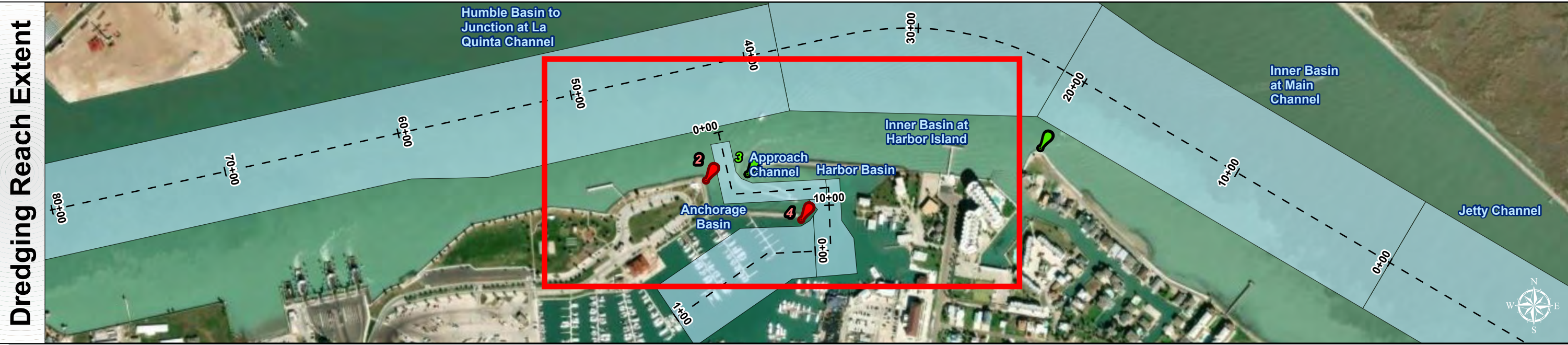
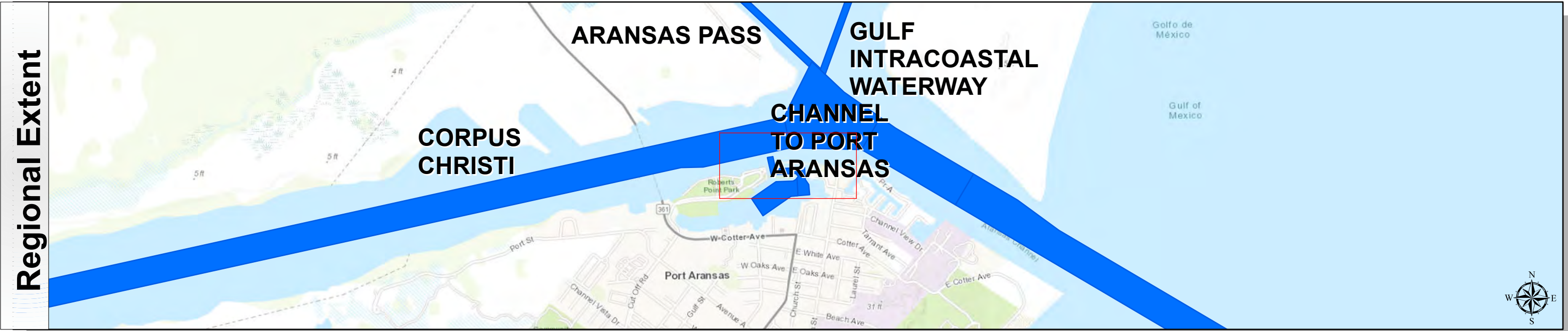


Channel to Port Aransas: Approach Channel



U.S. Army Corps of Engineers
Galveston District





Channel Features

- Channel Center Line
- Channel Toe
- Channel Station Lines
- Channel Dimensions

Aids to Navigation

- Green Side Aids
- Red Side Aids
- Lights

MLLW

0 - 4	4 - 6	6 - 8	8 - 10	10 - 12	12 - 14	14 - 16	16 - 18	< 18
-------	-------	-------	--------	---------	---------	---------	---------	------


NOTES:
1. Horizontal coordinates are referenced to Texas state plane coordinate system, south central zone nad83 us survey feet.
2. Elevations are referenced to mean lower low tide (MLLW) datum.
3. This project was designed by the Galveston District of the U.S. Army Corps of Engineers. The initials and signatures and registration designations of individuals appear on these project documents within the scope of their employment as required by 47 CFR 111.011-41.152.
4. The information depicted on this survey map represents the results of surveys made on the dates indicated and can only be considered as indicating the general conditions existing at that time. These conditions are subject to rapid change due to shoaling events. A prudent mariner should not rely exclusively on the information provided here. Required by 33 CFR 209.325.
5. For the most up to date information please check our website at: <http://www.swg.usace.army.mil/Missions/Navigation/HydrographicSurveys/>

Service Layer Credits: World Topographic Map: Texas Parks & Wildlife, Esri, HERE, Garmin, INCREMENT P, USGS, MET/NASA, EPA, USDA
World Imagery: Maxar, Microsoft
World Imagery: Maxar
World Ocean Base: Esri, GEBCO, Garmin, NaturalVue

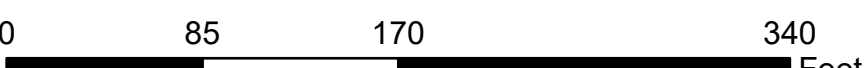
Additional Combined Survey Dates and Stationing:
COMB_SURV_INFO_HERE

Coordinate System: NAD 1983 StatePlane Texas South FIPS 4205 Feet
Projection: Lambert Conformal Conic

Dredging Reach Extent



Hydrographic Survey Extent



Authorized Depth: -14ft.

Side Slope Ratio: (Rise : Run)

PDF Print Date: 9/12/2023

Latest Survey Collection Date: 06 September 2023

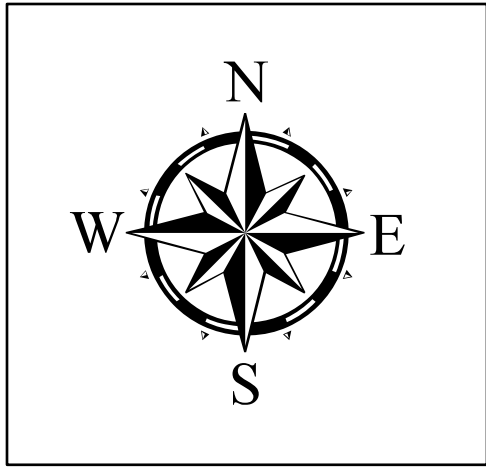
Document Page: 1 of 1

Website Index Number: 1

Scale: 1"=1,000'

Mapped by: M3AOXPAC

Additional Imagery info:



HYDROGRAPHIC SURVEY
U.S. ARMY ENGINEER DISTRICT
CORPS OF ENGINEERS
GALVESTON, TEXAS

Station: 2+00 to 8+88
CHANNEL TO PORT ARANSAS
Approach Channel