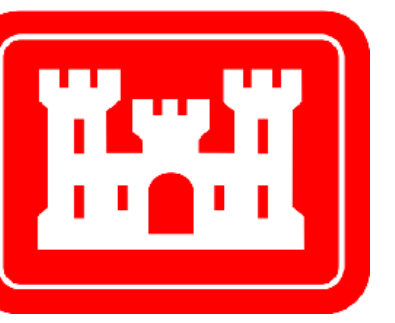


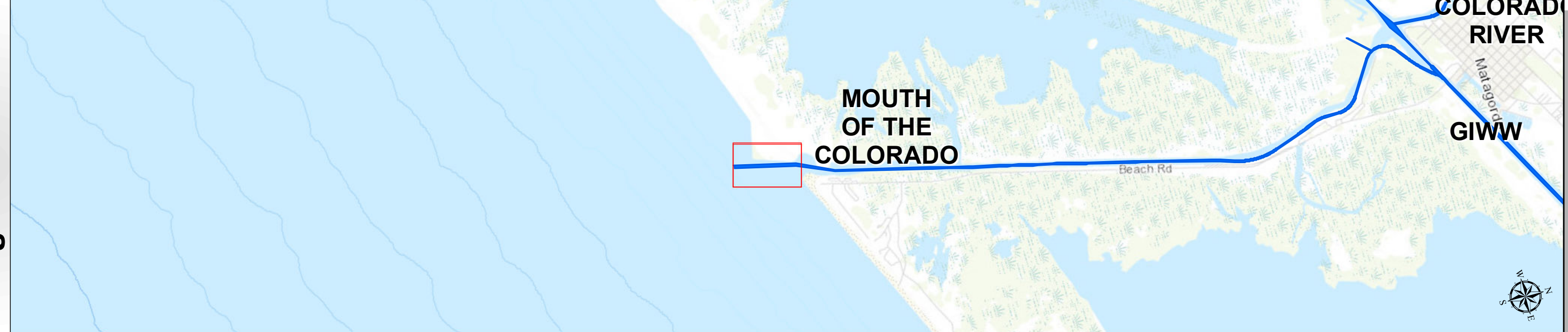
Mouth of the Colorado River: Mile 0 (Gulf) to Mile 2.8



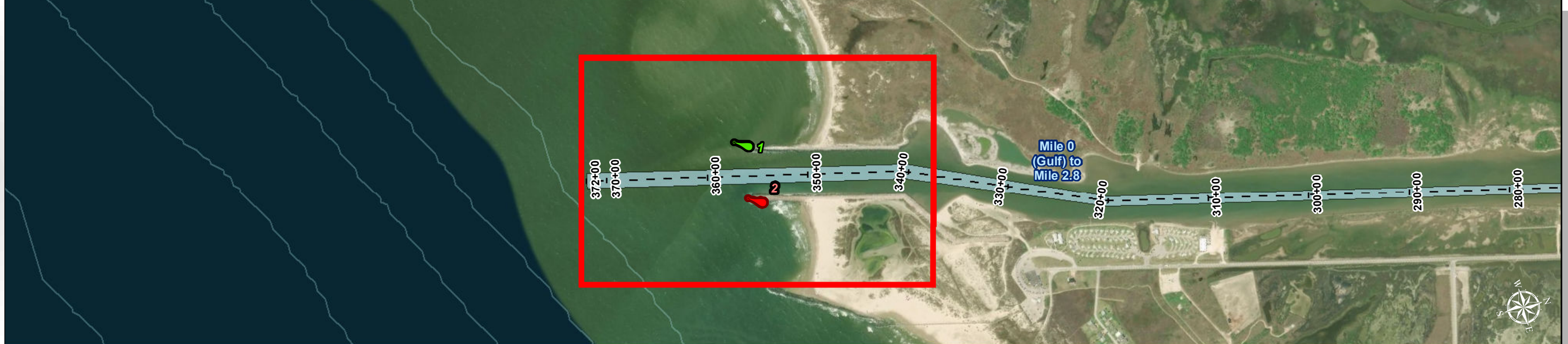
U.S. Army Corps of Engineers
Galveston District



Regional Extent



Dredging Reach Extent



Survey Date(s): 08 February 2019	Authorized Depth: -17ft.
Page: 1 of 11	Side Slope Ratio: (Rise : Run)
Scale: 1:1,800	Additional Imagery: © DigitalGlobe Inc.
Mapped by: m3odmrvk	Print Date: 2/19/2019
Additional Info :	

Channel Features

- Channel Toe
- Channel Center Line
- Channel Dimensions

Aids to Navigation

- Green Side Aids
- Red Side Aids
- Lights

MLLW

0 - 5	5 - 9	9 - 11	11 - 13	13 - 15	15 - 17	17 - 20	20 - 24	24+
-------	-------	--------	---------	---------	---------	---------	---------	-----

NOAA Bathymetry (DREDGING REACH EXTENT)

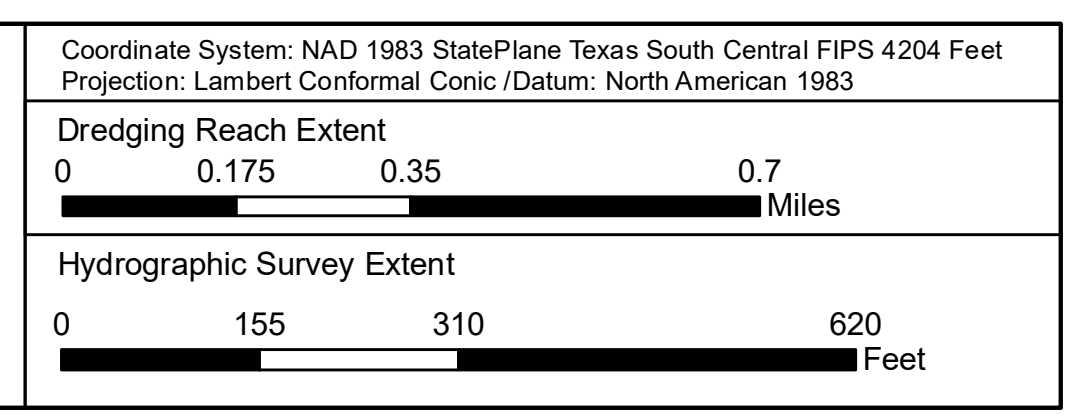
0 - 10	10 - 15	15 - 20	20 - 25	25 - 30	30 - 50
--------	---------	---------	---------	---------	---------

NOTES:

- HORIZONTAL COORDINATES ARE REFERENCED TO TEXAS STATE PLANE COORDINATE SYSTEM, SOUTH CENTRAL ZONE NAD83 US SURVEY FEET.
- ELEVATIONS ARE REFERENCED TO MEAN LOWER LOW TIDE (MLLW) DATUM.
- THIS PROJECT WAS DESIGNED BY THE GALVESTON DISTRICT OF THE U.S. ARMY CORPS OF ENGINEERS. THE INITIALS AND SIGNATURES AND REGISTRATION DESIGNATIONS OF INDIVIDUALS APPEAR ON THESE PROJECT DOCUMENTS WITHIN THE SCOPE OF THEIR EMPLOYMENT AS REQUIRED BY ER1110-1-8152.
- THE INFORMATION DEPICTED ON THIS SURVEY MAP REPRESENTS THE RESULTS OF SURVEYS MADE ON THE DATES INDICATED AND CAN ONLY BE CONSIDERED AS INDICATING THE GENERAL CONDITIONS EXISTING AT THAT TIME. THESE CONDITIONS ARE SUBJECT TO RAPID CHANGE DUE TO SHOALING EVENTS. A PRUDENT MARINER SHOULD NOT RELY EXCLUSIVELY ON THE INFORMATION PROVIDED HERE. REQUIRED BY 33 CFR 209.325
- FOR THE MOST UP TO DATE INFORMATION PLEASE CHECK OUR WEBSITE AT: [HTTP://WWW.SWG.USACE.ARMY.MIL/MISSIONS/NAVIGATION/HYDROGRAPHIC-SURVEYS/](http://www.swg.usace.army.mil/missions/navigation/hydrographic-surveys/)
- NOAA BATHYMETRY CONTOURS PRODUCED FROM HISTORIC BATHYMETRIC (HYDROGRAPHIC) SURVEYS CONDUCTED BY THE NOAA NATIONAL OCEAN SERVICE/COAST SURVEY, AVAILABLE FROM THE NATIONAL GEOPHYSICAL DATA CENTER. SURVEYS VARY AS TO SOUNDING DENSITY, ACCURACY OF DEPTH, ACCURACY OF NAVIGATION, ZERO DATUM, DATE OF SURVEY AND TYPE OF INSTRUMENTATION.

Service Layer Credits: Sources: Esri, HERE, Garmin, Intermap, increment P Corp., GEBCO, USGS, FAO, NPS, NRCAN, GeoBase, IGN, Kadaster NL, Ordnance Survey, Esri Japan, METI, Esri China (Hong Kong), swisstopo, © OpenStreetMap contributors, and the GIS User Community

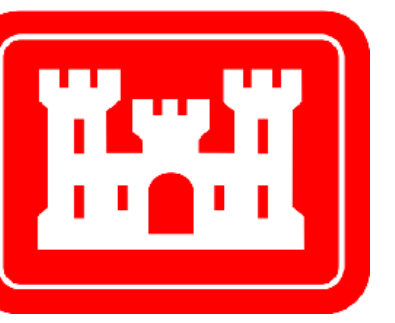
Source: Esri, DigitalGlobe, GeoEye, Earthstar Geographics, CNES/Airbus DS, USDA, USGS, AeroGRID, IGN, and the GIS User Community



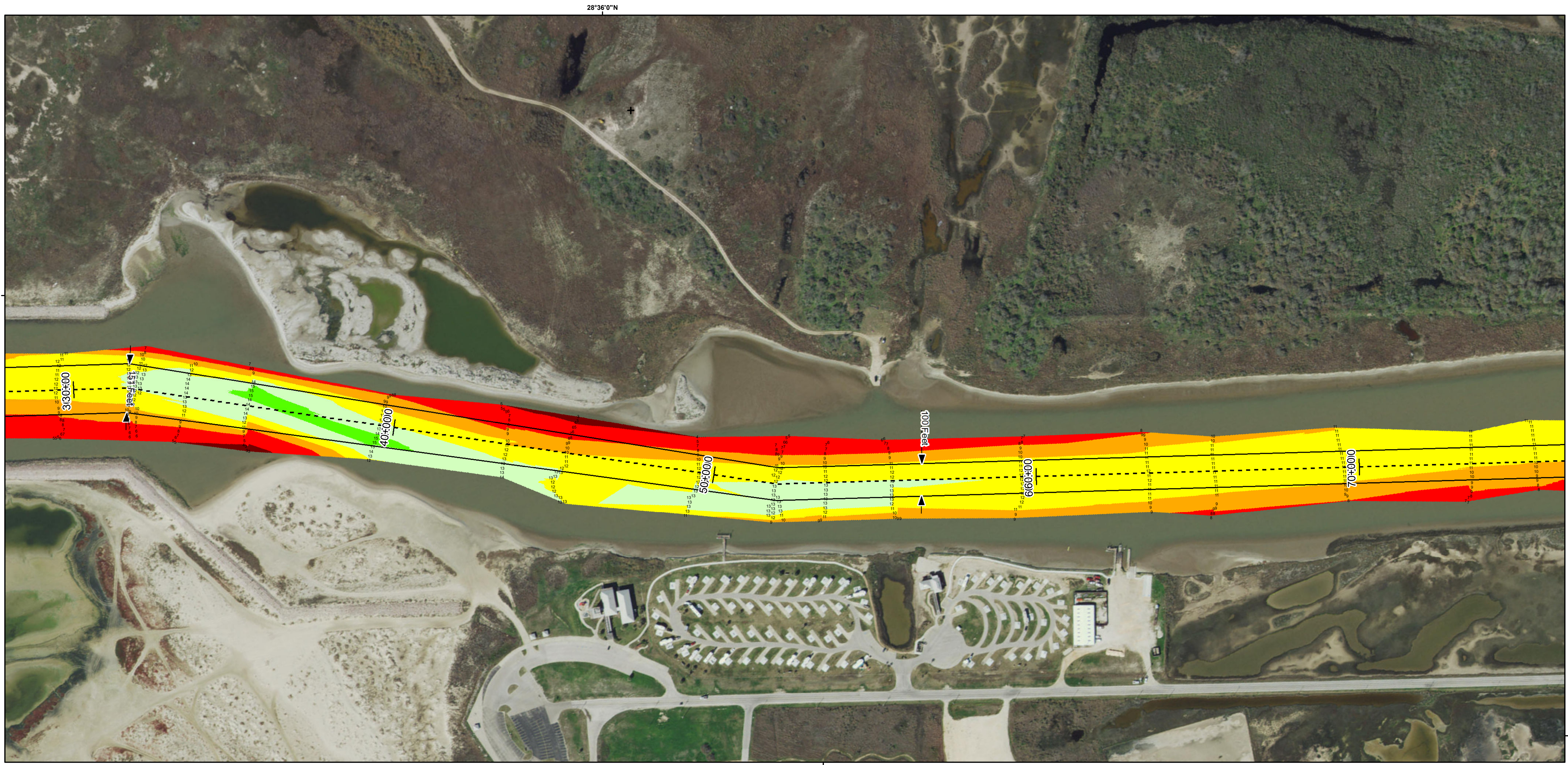
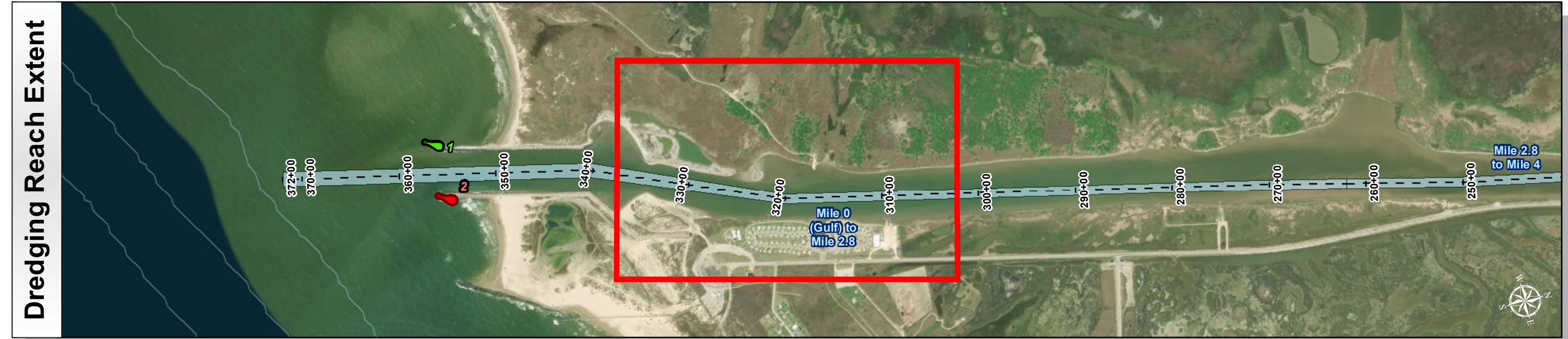
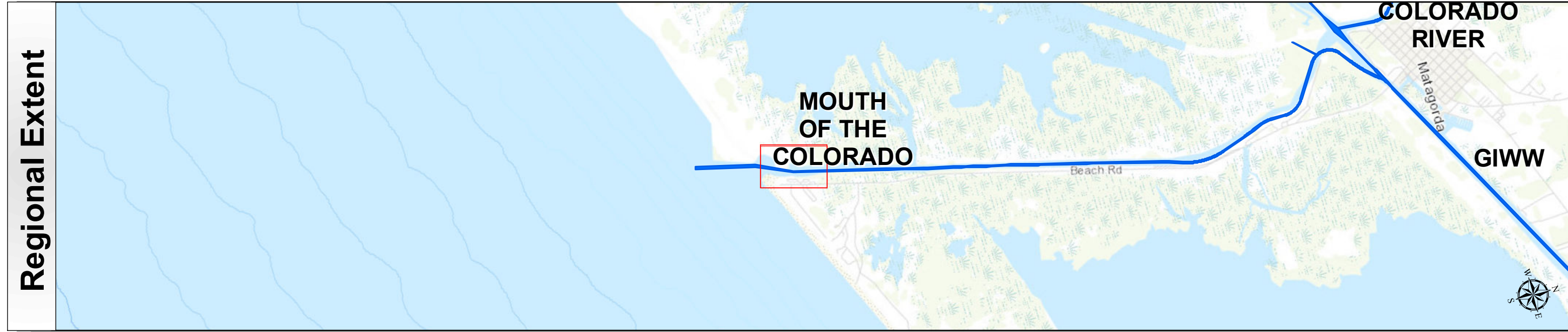
HYDROGRAPHIC SURVEY
U.S. ARMY ENGINEER DISTRICT
CORPS OF ENGINEERS
GALVESTON, TEXAS

Station: 0+00 to 110+00
MOUTH OF THE COLORADO
TEXAS

Mouth of the Colorado River: Mile 0 (Gulf) to Mile 2.8



U.S. Army Corps of Engineers
Galveston District



Survey Date(s): 08 February 2019	Authorized Depth: -17ft.
Page: 2 of 11	Side Slope Ratio: (Rise : Run)
Scale: 1:1,800	Additional Imagery: © DigitalGlobe Inc.
Mapped by: m3odmrvk	Print Date: 2/19/2019
Additional Info :	

Channel Features

- Channel Toe
- Channel Center Line
- Channel Dimensions

Aids to Navigation

- Green Side Aids
- Red Side Aids
- Lights

MLLW

0 - 5, 5 - 9, 9 - 11, 11 - 13, 13 - 15, 15 - 17, 17 - 20, 20 - 24, 24+

NOAA Bathymetry (DREDGING REACH EXTENT)

0 - 10, 10 - 15, 15 - 20, 20 - 25, 25 - 30, 30 - 50

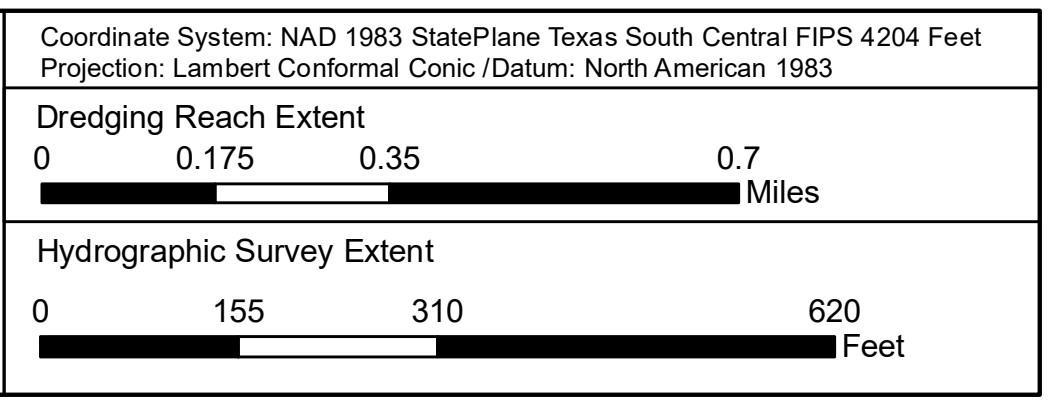
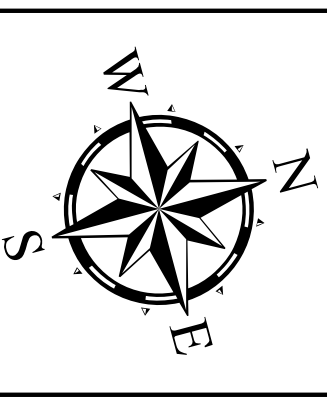
NOTES:

- HORIZONTAL COORDINATES ARE REFERENCED TO TEXAS STATE PLANE COORDINATE SYSTEM, SOUTH CENTRAL ZONE NAD83 US SURVEY FEET.
- ELEVATIONS ARE REFERENCED TO MEAN LOWER LOW TIDE (MLLW) DATUM.
- THIS PROJECT WAS DESIGNED BY THE GALVESTON DISTRICT OF THE U.S. ARMY CORPS OF ENGINEERS. THE INITIALS AND SIGNATURES AND REGISTRATION DESIGNATIONS OF INDIVIDUALS APPEAR ON THESE PROJECT DOCUMENTS WITHIN THE SCOPE OF THEIR EMPLOYMENT AS REQUIRED BY ER1110-1-8152.

- THE INFORMATION DEPICTED ON THIS SURVEY MAP REPRESENTS THE RESULTS OF SURVEYS MADE ON THE DATES INDICATED AND CAN ONLY BE CONSIDERED AS INDICATING THE GENERAL CONDITIONS EXISTING AT THAT TIME. THESE CONDITIONS ARE SUBJECT TO RAPID CHANGE DUE TO SHOALING EVENTS. A PRUDENT MARINER SHOULD NOT RELY EXCLUSIVELY ON THE INFORMATION PROVIDED HERE. REQUIRED BY 33 CFR 209.325
- FOR THE MOST UP TO DATE INFORMATION PLEASE CHECK OUR WEBSITE AT: [HTTP://WWW.SWG.USACE.ARMY.MIL/MISSIONS/NAVIGATION/HYDROGRAPHIC/SURVEYS/](http://www.swg.usace.army.mil/missions/navigation/hydrographic/surveys/)
- NOAA BATHYMETRY CONTOURS PRODUCED FROM HISTORIC BATHYMETRIC (HYDROGRAPHIC) SURVEYS CONDUCTED BY THE NOAA NATIONAL OCEAN SERVICE COAST SURVEY, AVAILABLE FROM THE NATIONAL GEOPHYSICAL DATA CENTER. SURVEYS VARY AS TO SOUNDING DENSITY, ACCURACY OF DEPTH, ACCURACY OF NAVIGATION, ZERO DATUM, DATE OF SURVEY AND TYPE OF INSTRUMENTATION.

Service Layer Credits: Sources: Esri, HERE, Garmin, Intermap, increment P Corp., GEBCO, USGS, FAO, NPS, NRCAN, GeoBase, IGN, Kadaster NL, Ordnance Survey, Esri Japan, METI, Esri China (Hong Kong), swisstopo, © OpenStreetMap contributors, and the GIS User Community

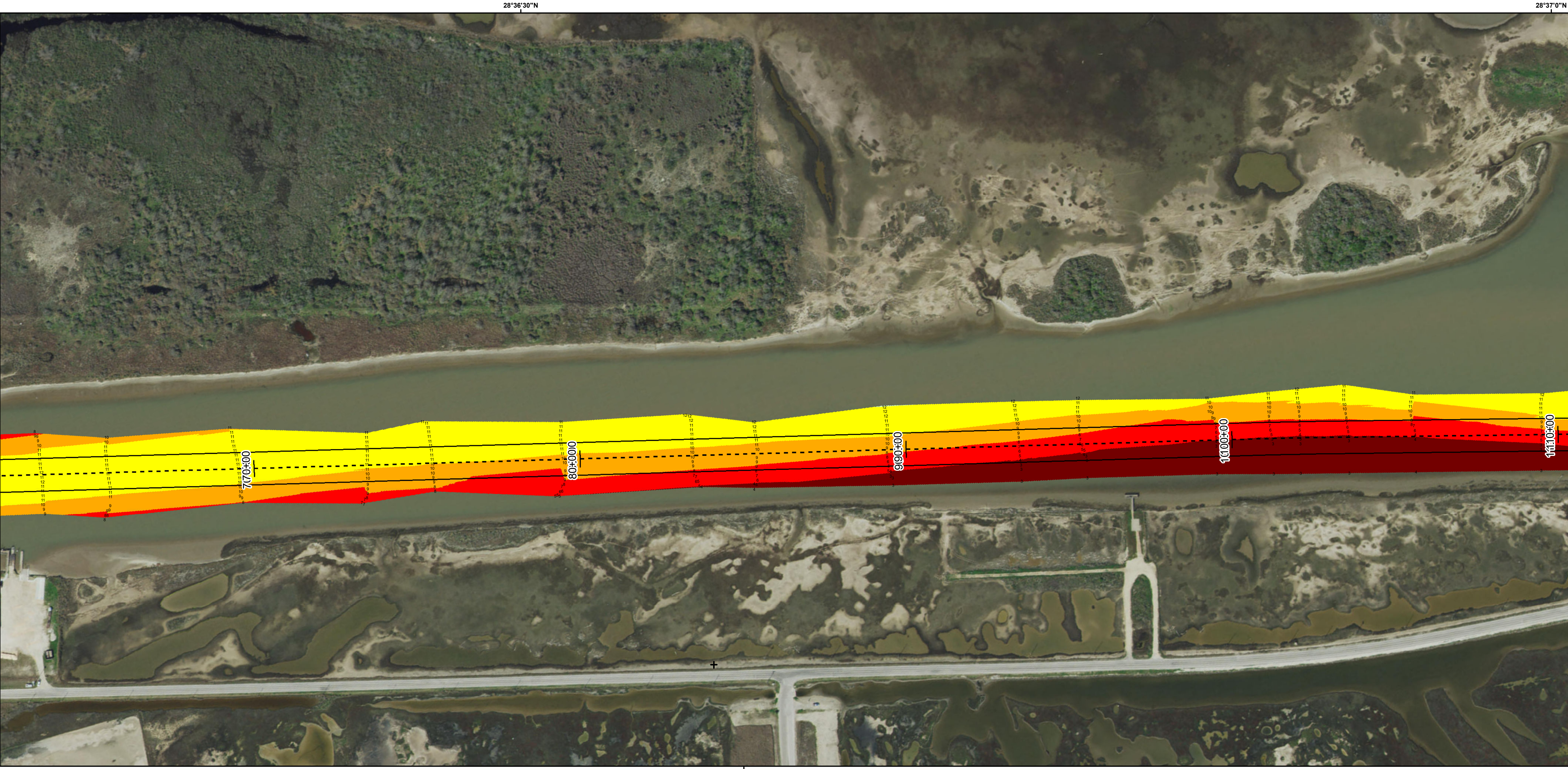
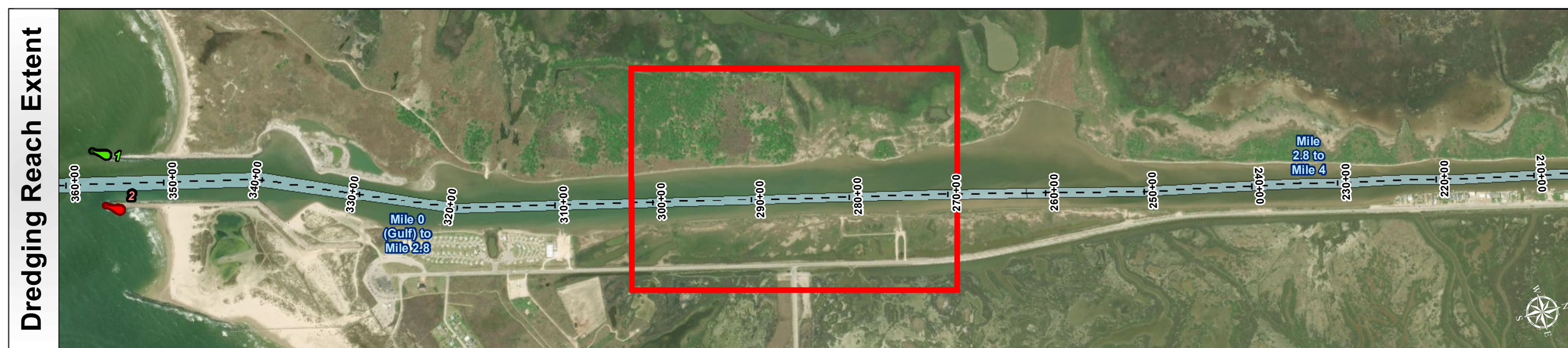
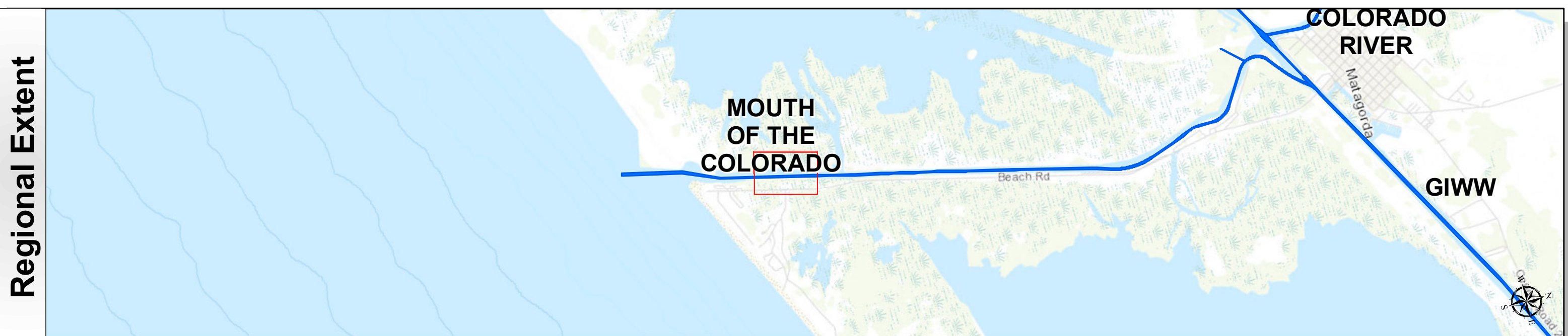
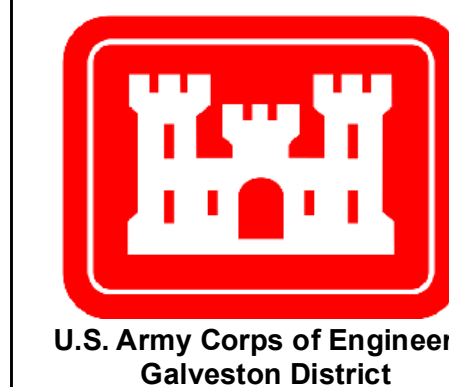
Source: Esri, DigitalGlobe, GeoEye, Earthstar Geographics, CNES/Airbus DS, USDA, USGS, AeroGRID, IGN, and the GIS User Community



HYDROGRAPHIC SURVEY
U.S. ARMY ENGINEER DISTRICT
CORPS OF ENGINEERS
GALVESTON, TEXAS

Station: 0+00 to 110+00
MOUTH OF THE COLORADO
TEXAS

Mouth of the Colorado River: Mile 0 (Gulf) to Mile 2.8



Channel Features

- Channel Toe
- Channel Center Line
- Channel Dimensions

Aids to Navigation

- Green Side Aids
- Red Side Aids
- Lights

MLLW

0 - 5, 5 - 9, 9 - 11, 11 - 13, 13 - 15, 15 - 17, 17 - 20, 20 - 24, 24+

NOAA Bathymetry (DREDGING REACH EXTENT)

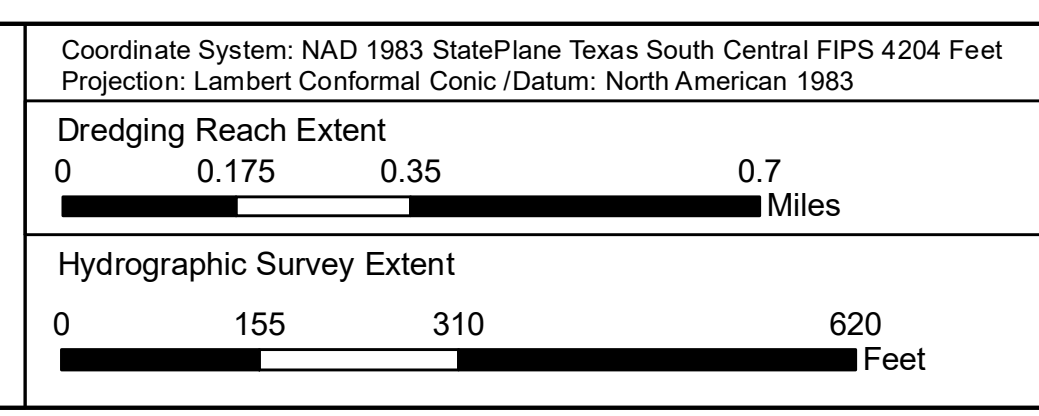
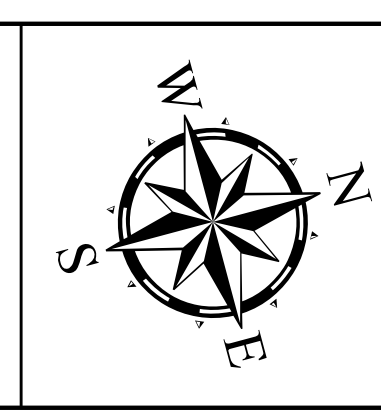
0 - 10, 10 - 15, 15 - 20, 20 - 25, 25 - 30, 30 - 50

NOTES:

- HORIZONTAL COORDINATES ARE REFERENCED TO TEXAS STATE PLANE COORDINATE SYSTEM, SOUTH CENTRAL ZONE NAD83 US SURVEY FEET.
- ELEVATIONS ARE REFERENCED TO MEAN LOWER LOW TIDE (MLLW) DATUM.
- THIS PROJECT WAS DESIGNED BY THE GALVESTON DISTRICT OF THE U.S. ARMY CORPS OF ENGINEERS. THE INITIALS AND SIGNATURES AND REGISTRATION DESIGNATIONS OF INDIVIDUALS APPEAR ON THESE PROJECT DOCUMENTS WITHIN THE SCOPE OF THEIR EMPLOYMENT AS REQUIRED BY ER1110-1-8152.
- THE INFORMATION DEPICTED ON THIS SURVEY MAP REPRESENTS THE RESULTS OF SURVEYS MADE ON THE DATES INDICATED AND CAN ONLY BE CONSIDERED AS INDICATING THE GENERAL CONDITIONS EXISTING AT THAT TIME. THESE CONDITIONS ARE SUBJECT TO RAPID CHANGE DUE TO SHOALING EVENTS. A PRUDENT MARINER SHOULD NOT RELY EXCLUSIVELY ON THE INFORMATION PROVIDED HERE. REQUIRED BY 33 CFR 209.325
- FOR THE MOST UP TO DATE INFORMATION PLEASE CHECK OUR WEBSITE AT: [HTTP://WWW.SWG.USACE.ARMY.MIL/MISSIONS/NAVIGATION/HYDROGRAPHIC/SURVEYS/](http://www.swg.usace.army.mil/missions/navigation/hydrographic/surveys/)
- NOAA BATHYMETRY CONTOURS PRODUCED FROM HISTORIC BATHYMETRIC (HYDROGRAPHIC) SURVEYS CONDUCTED BY THE NOAA NATIONAL OCEAN SERVICE/COAST SURVEY, AVAILABLE FROM THE NATIONAL GEOPHYSICAL DATA CENTER. SURVEYS VARY AS TO SOUNDING DENSITY, ACCURACY OF DEPTH, ACCURACY OF NAVIGATION, ZERO DATUM, DATE OF SURVEY AND TYPE OF INSTRUMENTATION.

Service Layer Credits: Sources: Esri, HERE, Garmin, Intermap, increment P Corp., GEBCO, USGS, FAO, NPS, NRCAN, GeoBase, IGN, Kadaster NL, Ordnance Survey, Esri Japan, METI, Esri China (Hong Kong), swisstopo, © OpenStreetMap contributors, and the GIS User Community

Source: Esri, DigitalGlobe, GeoEye, Earthstar Geographics, CNES/Airbus DS, USDA, USGS, AeroGRID, IGN, and the GIS User Community



Survey Date(s): 06 February 2019	Authorized Depth: -17ft.
Page: 3 of 11	Side Slope Ratio: (Rise : Run)
Scale: 1:1,800	Additional Imagery: © DigitalGlobe Inc.
Mapped by: m3odmrvk	Print Date: 2/19/2019
Additional Info :	

HYDROGRAPHIC SURVEY
U.S. ARMY ENGINEER DISTRICT
CORPS OF ENGINEERS
GALVESTON, TEXAS

Station: 0+00 to 110+00
MOUTH OF THE COLORADO
TEXAS