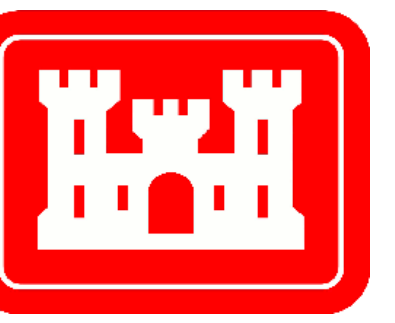
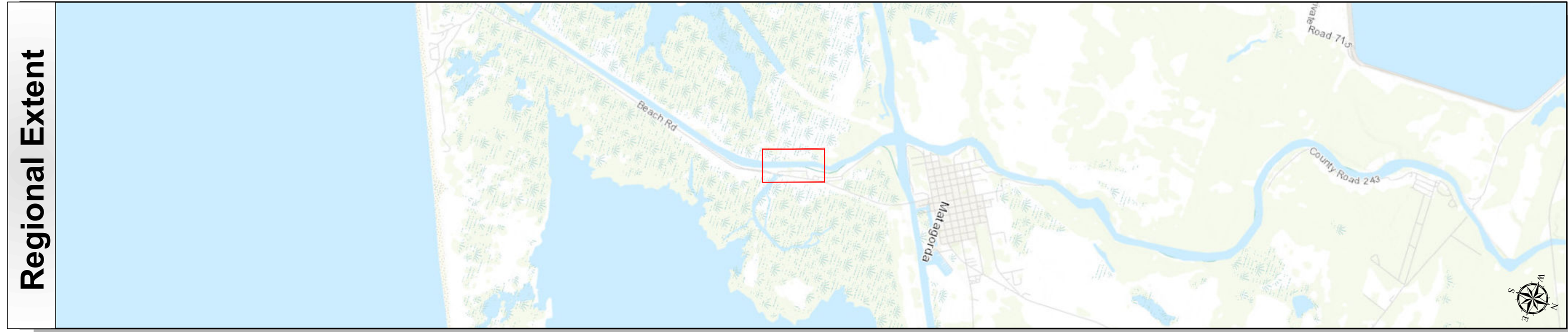
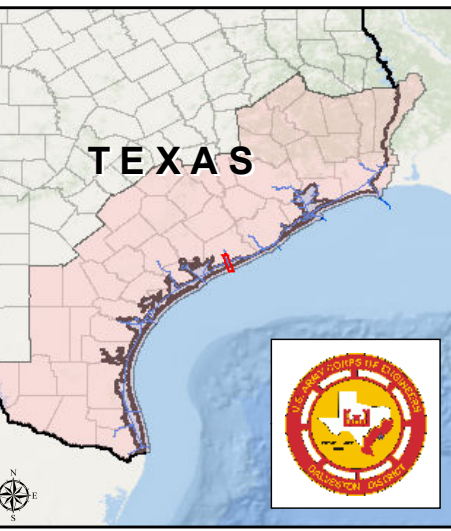


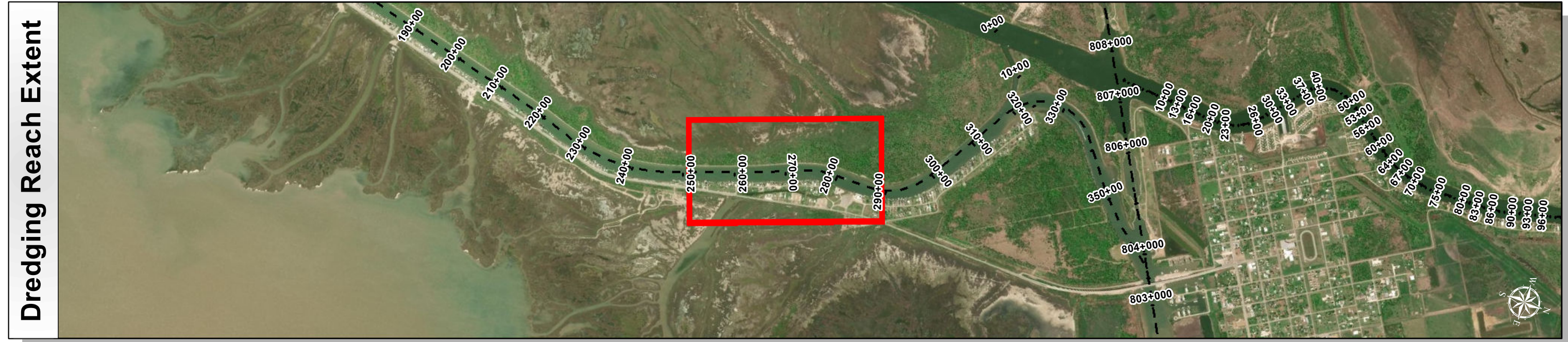
# Mouth of the Colorado River: Mile 5.7 to Mile 8.4 (GIWW)



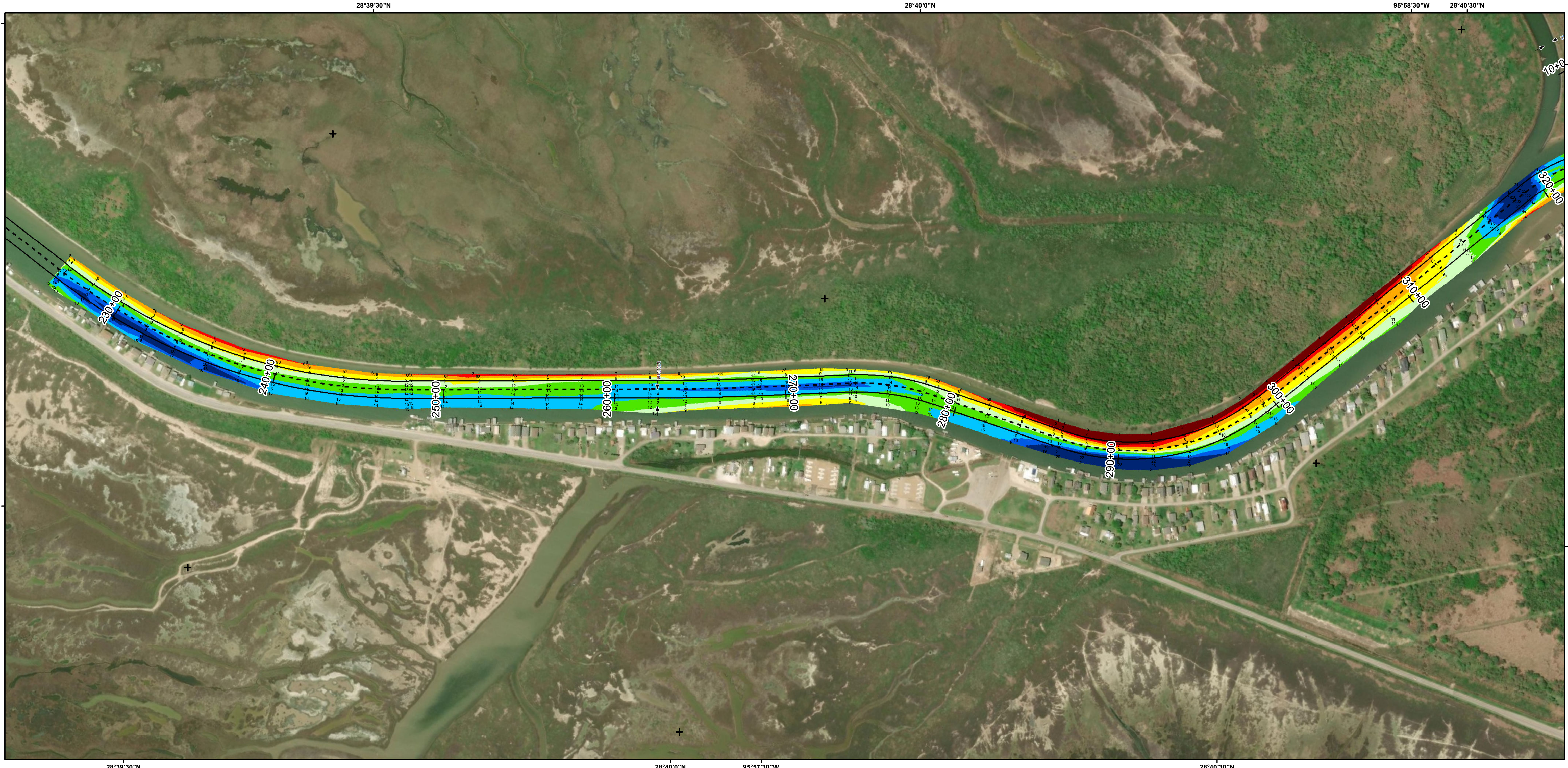
U.S. Army Corps of Engineers  
Galveston District



Regional Extent



Dredging Reach Extent



Survey Date(s): 29 August 2019	Authorized Depth: -1.4ft.
Page: 9 of 11	Side Slope Ratio: (Rise : Run)
Scale: 1:3,400	Additional Imagery: © DigitalGlobe Inc.
Map:	Print Date: 9/11/2019
Mapped by: m3odhmm	
Additional Info:	

**Channel Features**

- Channel Toe
- Channel Center Line
- Channel Station Lines
- Channel Dimensions

**Aids to Navigation**

- Green Side Aids
- Red Side Aids
- Lights

**MLLW**

0 - 4  
4 - 6  
6 - 8  
8 - 10  
10 - 12  
12 - 14  
14 - 16  
16 - 18  
< 18

**NOAA Bathymetry (DREDGING REACH EXTENT)**

0 - 10 10 - 15 15 - 20 20 - 25 25 - 30 30 - 50

**NOTES:**

- HORIZONTAL COORDINATES ARE REFERENCED TO TEXAS STATE PLANE COORDINATE SYSTEM, SOUTH CENTRAL ZONE NAD83 US SURVEY FEET.
- ELEVATIONS ARE REFERENCED TO MEAN LOWER LOW TIDE (MLLW) DATUM.
- THIS PROJECT WAS DESIGNED BY THE GALVESTON DISTRICT OF THE U.S. ARMY CORPS OF ENGINEERS. THE INITIALS AND SIGNATURES AND REGISTRATION DESIGNATIONS OF INDIVIDUALS APPEAR ON THESE PROJECT DOCUMENTS WITHIN THE SCOPE OF THEIR EMPLOYMENT AS REQUIRED BY ER1110-1-8152.
- THE INFORMATION DEPICTED ON THIS SURVEY MAP REPRESENTS THE RESULTS OF SURVEYS MADE ON THE DATES INDICATED AND CAN ONLY BE CONSIDERED AS INDICATING THE GENERAL CONDITIONS EXISTING AT THAT TIME. THESE CONDITIONS ARE SUBJECT TO RAPID CHANGE DUE TO SHOALING EVENTS. A PRUDENT MARINER SHOULD NOT RELY EXCLUSIVELY ON THE INFORMATION PROVIDED HERE. REQUIRED BY 33 CFR 209.325
- FOR THE MOST UP TO DATE INFORMATION PLEASE CHECK OUR WEBSITE AT: [HTTP://WWW.SWG.USACE.ARMY.MIL/MISSIONS/NAVIGATION/HYDROGRAPHICSURVEYS/](http://www.swg.usace.army.mil/missions/navigation/hydrographicsurveys/)
- NOAA BATHYMETRY CONTOURS PRODUCED FROM HISTORIC BATHYMETRIC (HYDROGRAPHIC) SURVEYS CONDUCTED BY THE NOAA NATIONAL OCEAN SERVICE/COAST SURVEY, AVAILABLE FROM THE NATIONAL GEOPHYSICAL DATA CENTER. SURVEYS VARY AS TO SOUNDING DENSITY, ACCURACY OF DEPTH, ACCURACY OF NAVIGATION, ZERO DATUM, DATE OF SURVEY AND TYPE OF INSTRUMENTATION.

Service Layer Credits: Source: Esri, DigitalGlobe, GeoEye, Earthstar Geographics, CNES/Airbus DS, USDA, USGS, AeroGRID, IGN, and the GIS User Community  
Sources: Esri, HERE, Garmin, Intermap, increment P Corp., GEBCO, USGS, FAO, NPS, NRCAN, GeoBase, IGN, Kadaster NL, Ordnance Survey, Esri Japan, METI, Esri China (Hong Kong), (c) OpenStreetMap contributors, and the GIS User Community  
Esri, Garmin, GEBCO, NOAA NGDC, and other contributors

Coordinate System: NAD 1983 StatePlane Texas South Central FIPS 4204 Feet  
Projection: Lambert Conformal Conic /Datum: North American 1983

**Dredging Reach Extent**

0 0.35 0.7 1.4 Miles

**Hydrographic Survey Extent**

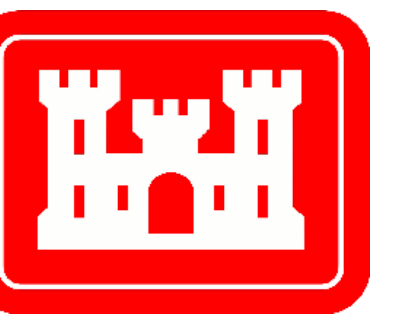
0 295 590 1,180 Feet

**HYDROGRAPHIC SURVEY**  
U.S. ARMY ENGINEER DISTRICT  
CORPS OF ENGINEERS  
GALVESTON, TEXAS

**Station: 226+21.68 to 368+10**  
**MOUTH OF THE COLORADO**  
TEXAS



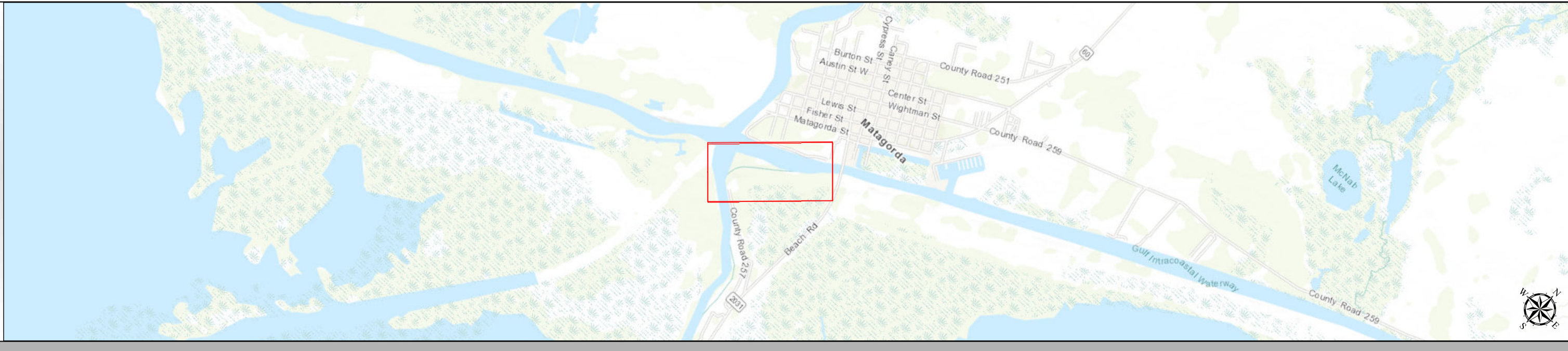
# Mouth of the Colorado River: Mile 5.7 to Mile 8.4 (GIWW)



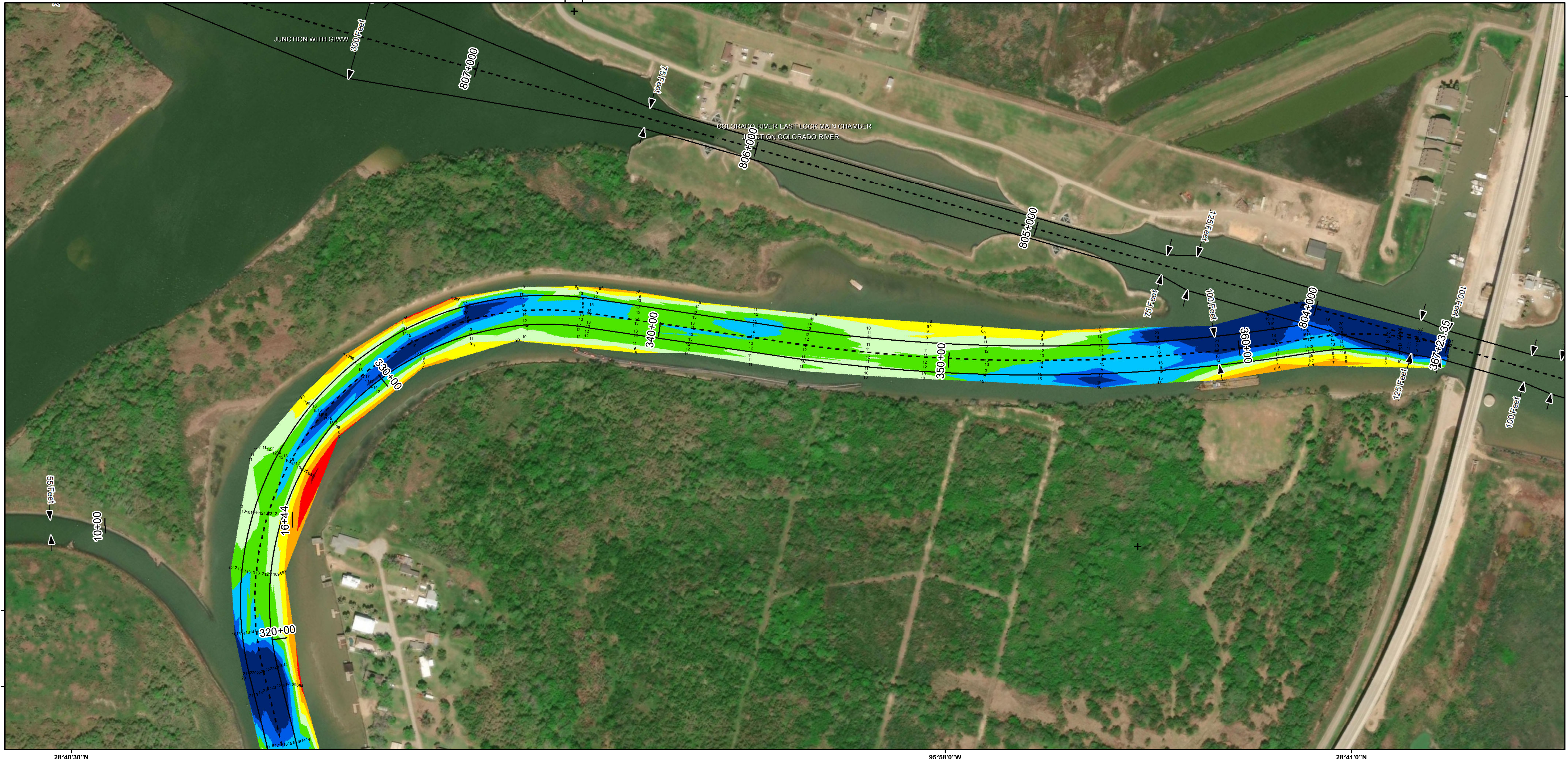
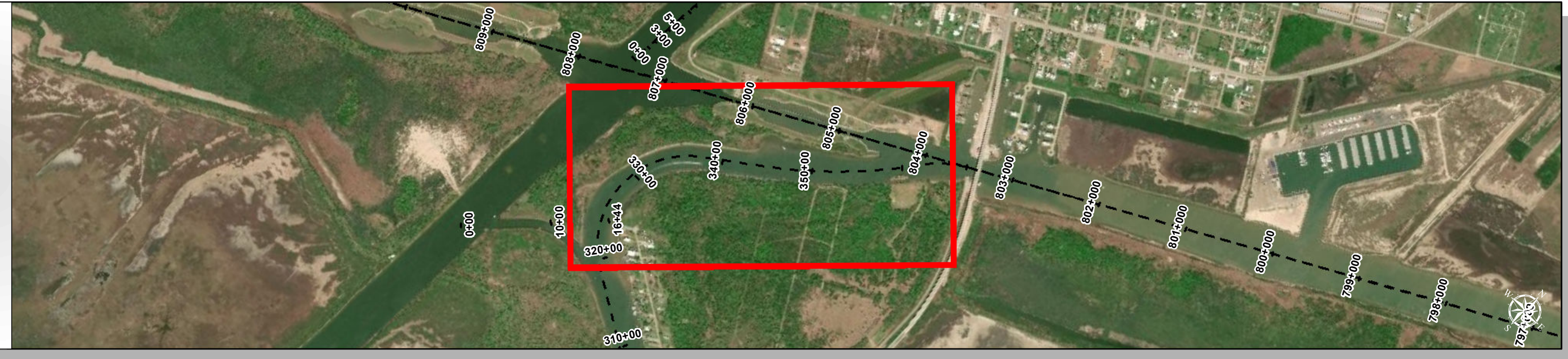
U.S. Army Corps of Engineers  
Galveston District



Regional Extent



Dredging Reach Extent



Survey Date(s): 29 August 2019	Authorized Depth: -14ft.
Page: 10 of 11	Side Slope Ratio: (Rise : Run)
Scale: 1:2,000	Additional Imagery: © DigitalGlobe Inc.
Mapped by: m3odmnm	Print Date: 9/11/2019
Additional Info:	

**Channel Features**

- Channel Toe
- Channel Center Line
- Channel Station Lines
- Channel Dimensions

**Aids to Navigation**

- Green Side Aids
- Red Side Aids
- Lights

**MLLW**

0 - 4  
4 - 6  
6 - 8  
8 - 10  
10 - 12  
12 - 14  
14 - 16  
16 - 18  
< 18

**NOAA Bathymetry (DREDGING REACH EXTENT)**

0 - 10  
10 - 15  
15 - 20  
20 - 25  
25 - 30  
30 - 50

NOTES:

- HORIZONTAL COORDINATES ARE REFERENCED TO TEXAS STATE PLANE COORDINATE SYSTEM, SOUTH CENTRAL ZONE NAD83 US SURVEY FEET.
- ELEVATIONS ARE REFERENCED TO MEAN LOWER LOW TIDE (MLLW) DATUM.
- THIS PROJECT WAS DESIGNED BY THE GALVESTON DISTRICT OF THE U.S. ARMY CORPS OF ENGINEERS. THE INITIALS AND SIGNATURES AND REGISTRATION DESIGNATIONS OF INDIVIDUALS APPEAR ON THESE PROJECT DOCUMENTS WITHIN THE SCOPE OF THEIR EMPLOYMENT AS REQUIRED BY ER1110-1-8152.
- THE INFORMATION DEPICTED ON THIS SURVEY MAP REPRESENTS THE RESULTS OF SURVEYS MADE ON THE DATES INDICATED AND CAN ONLY BE CONSIDERED AS INDICATING THE GENERAL CONDITIONS EXISTING AT THAT TIME. THESE CONDITIONS ARE SUBJECT TO RAPID CHANGE DUE TO SHOALING EVENTS. A PRUDENT MARINER SHOULD NOT RELY EXCLUSIVELY ON THE INFORMATION PROVIDED HERE. REQUIRED BY 33 CFR 209.325
- FOR THE MOST UP TO DATE INFORMATION PLEASE CHECK OUR WEBSITE AT: [HTTP://WWW.SWG.USACE.ARMY.MIL/MISSIONS/NAVIGATION/HYDROGRAPHIC/SURVEYS/](http://www.swg.usace.army.mil/missions/navigation/hydrographic/surveys/)
- NOAA BATHYMETRY CONTOURS PRODUCED FROM HISTORIC BATHYMETRIC (HYDROGRAPHIC) SURVEYS CONDUCTED BY THE NOAA NATIONAL OCEAN SERVICE/COAST SURVEY, AVAILABLE FROM THE NATIONAL GEOPHYSICAL DATA CENTER. SURVEYS VARY AS TO SOUNDING DENSITY, ACCURACY OF DEPTH, ACCURACY OF NAVIGATION, ZERO DATUM, DATE OF SURVEY AND TYPE OF INSTRUMENTATION.

Service Layer Credits: Source: Esri, DigitalGlobe, GeoEye, Earthstar Geographics, CNES/Airbus DS, USDA, USGS, AeroGRID, IGN, and the GIS User Community  
Sources: Esri, HERE, Garmin, Intermap, Increment P Corp., GEBCO, USGS, FAO, NPS, NRCAN, GeBCO, IGN, Kadaster NL, Ordnance Survey, Esri Japan, METI, Esri China (Hong Kong), (c) OpenStreetMap contributors, and the GIS User Community  
Esri, Garmin, GEBCO, NOAA NGDC, and other contributors



Coordinate System: NAD 1983 StatePlane Texas South Central FIPS 4204 Feet  
Projection: Lambert Conformal Conic /Datum: North American 1983

**Dredging Reach Extent**

0 0.2 0.4 0.8 Miles

**Hydrographic Survey Extent**

0 175 350 700 Feet

**HYDROGRAPHIC SURVEY**  
U.S. ARMY ENGINEER DISTRICT  
CORPS OF ENGINEERS  
GALVESTON, TEXAS

**Station: 226+21.68 to 368+10**  
**MOUTH OF THE COLORADO**  
TEXAS