

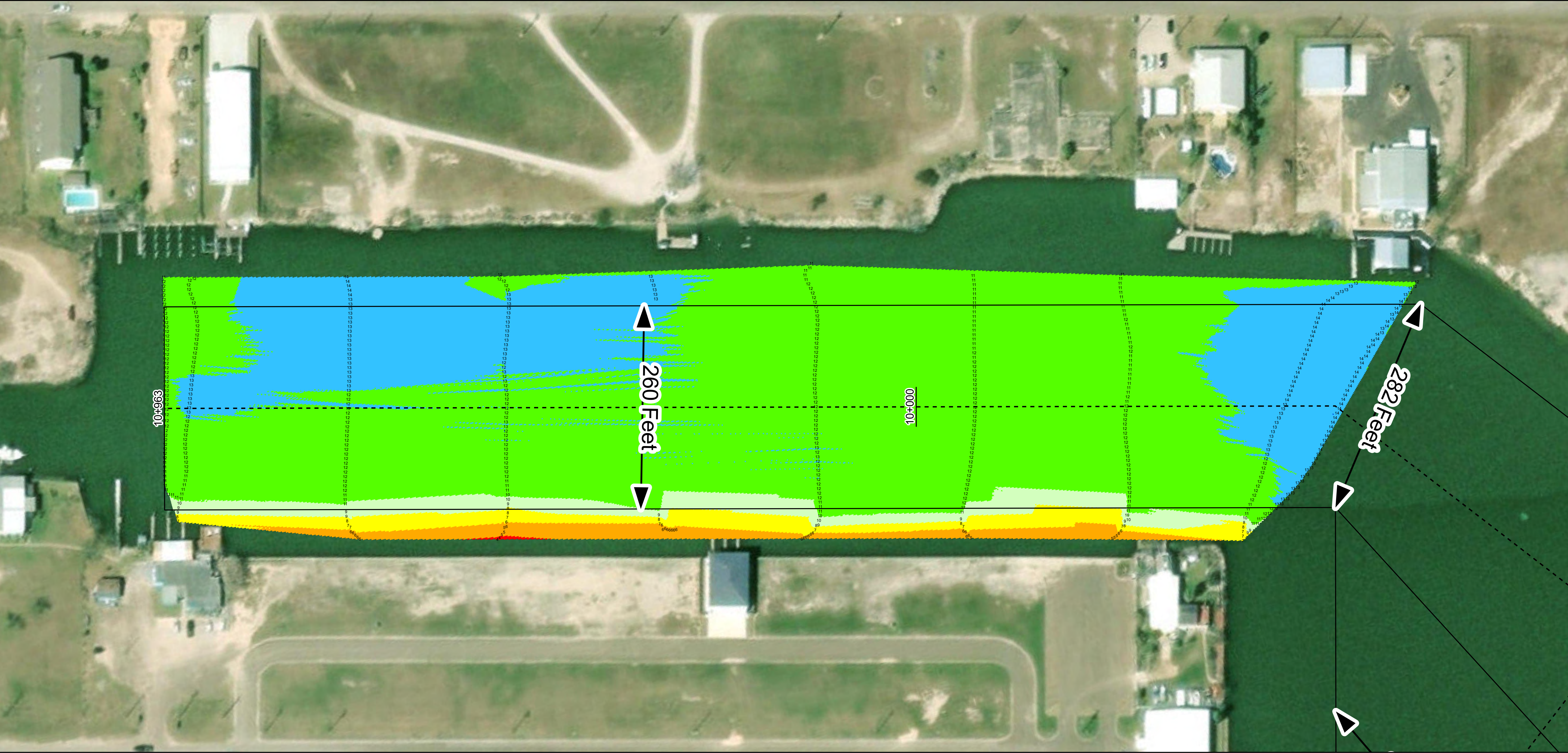
# Channel to Port Mansfield: Shrimp Basin



U.S. Army Corps of Engineers  
Galveston District



TEXAS



**Channel Features**

- Channel Center Line
- Channel Toe
- Channel Station Lines
- Channel Dimensions

**Aids to Navigation**

- Green Side Aids
- Red Side Aids
- Lights

**LWD**

0 - 3	3 - 5	5 - 7	7 - 9	9 - 11	11 - 13	13 - 15	15 - 17	< 17
-------	-------	-------	-------	--------	---------	---------	---------	------

**NOTES:**

- Horizontal coordinates are referenced to Texas state plane coordinate system, south central zone nad83 us survey feet.
- Elevations are referenced to low water depth (LWD) datum.
- This project was designed by the Galveston District of the U.S. Army Corps of Engineers. The initials and signatures and registration designations of individuals appear on these project documents within the scope of their employment as required by 47 CFR 111.01-0112.
- The information depicted on this survey map represents the results of surveys made on the dates indicated and can only be considered as indicating the general conditions existing at that time. These conditions are subject to rapid change due to shoaling events. A prudent mariner should not rely exclusively on the information provided here. Required by 33 CFR 209.325
- For the most up to date information please check our website at: <http://www.svg.usace.army.mil/Missions/Navigation/HydrographicSurveys/>

Service Layer Credits: World Topographic Map: Texas Parks & Wildlife, Esri, HERE, Garmin, INCREMENT P, USGS, METINASA, EPA, USDA  
World Ocean Base: Esri, GEBCO, DeLorme, NaturalVue  
World Imagery: Maxar, Microsoft  
World Imagery: Maxar

**Additional Combined Survey Dates and Stationing:**

COMB\_SURV\_INFO\_HERE

**Coordinate System:** NAD 1983 StatePlane Texas South FIPS 4205 Feet  
**Projection:** Lambert Conformal Conic

**Dredging Reach Extent**

0 0.07 0.15 0.3 Miles

**Hydrographic Survey Extent**

0 62.5 125 250 Feet

**HYDROGRAPHIC SURVEY**

U.S. ARMY ENGINEER DISTRICT  
CORPS OF ENGINEERS  
GALVESTON, TEXAS

**Station: 9+550 to 11+000**

**CHANNEL TO PORT MANSFIELD**

Shrimp Basin

**Latest Survey Collection Date:** 09 March 2023

**Document Page:** 1 of 1

**Scale:** 1"=750

**Mapped by:** M3AOXPAC

**Additional Imagery info:**

**Authorized Depth:** -13ft.

**Side Slope Ratio:** (Rise : Run)

**PDF Print Date:** 3/13/2023

