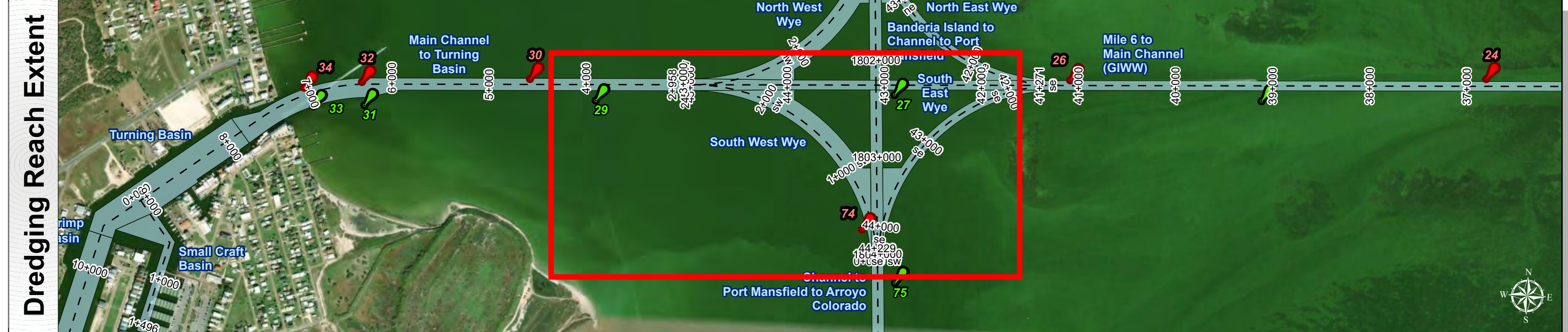


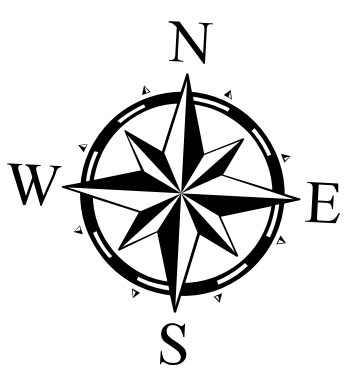
Channel to Port Mansfield: South West Wye



U.S. Army Corps of Engineers
Galveston District



Latest Survey Collection Date: 04 April 2025	Authorized Depth: -13ft.
Document Page: 1 of 1	Width Range: 200ft to 1050ft
Scale: 1:1,800	Side Slope Ratio: 1:3 (Rise : Run)
Mapped by: M3AOXPAC	PDF Print Date: 4/9/2025
Additional Imagery info:	



HYDROGRAPHIC SURVEY
U.S. ARMY ENGINEER DISTRICT
CORPS OF ENGINEERS
GALVESTON, TEXAS

Station: 0+000 SW to 2+980 SW
CHANNEL TO PORT MANSFIELD
South West Wye