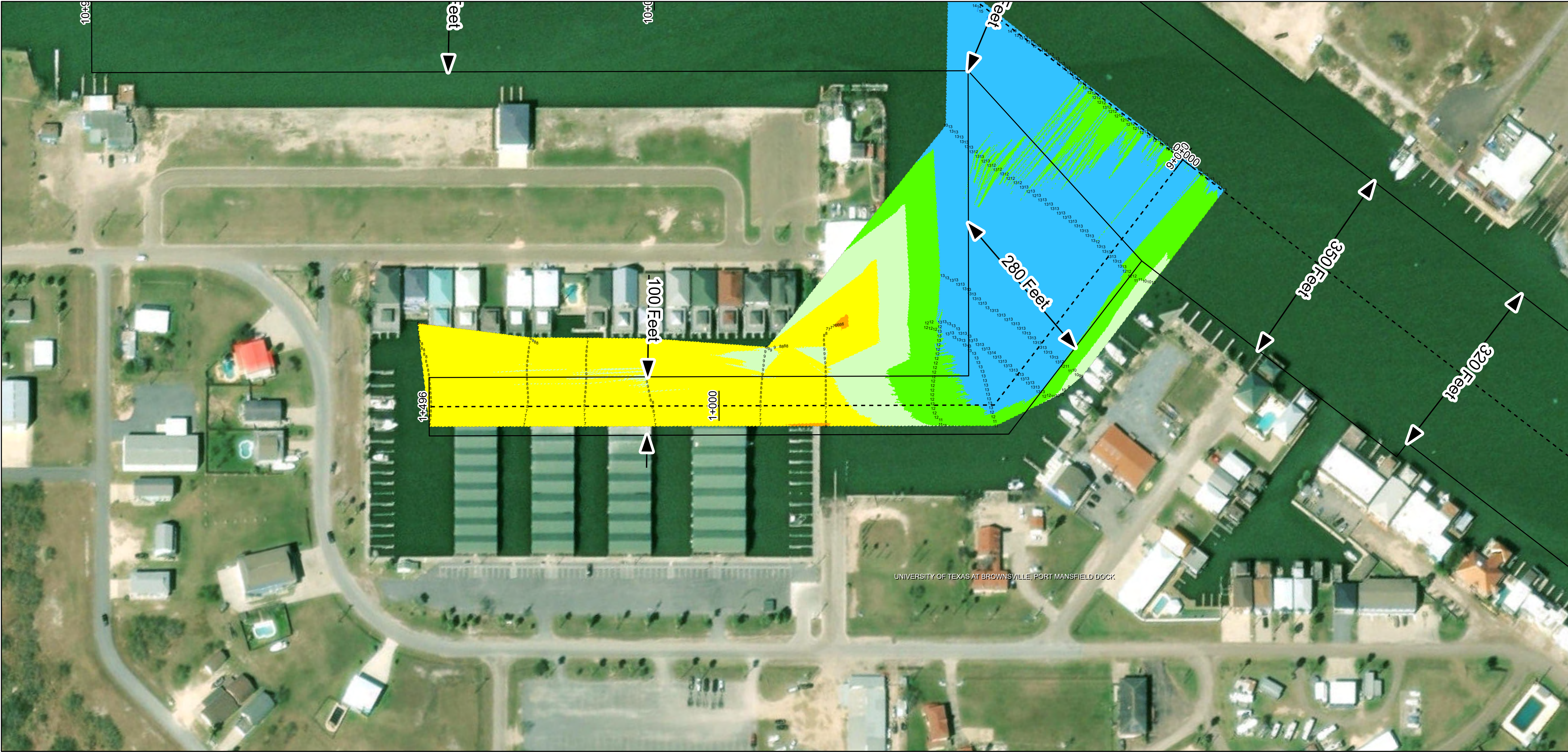


Channel to Port Mansfield: Small Craft Basin



U.S. Army Corps of Engineers
Galveston District





Channel Features

- Channel Center Line
- Channel Toe
- Channel Station Lines
- Channel Dimensions

Aids to Navigation

- Green Side Aids
- Red Side Aids
- Lights

LWD

0 - 3	3 - 5	5 - 7	7 - 9	9 - 11	11 - 13	13 - 15	15 - 17	< 17
-------	-------	-------	-------	--------	---------	---------	---------	------

NOTES:

- Horizontal coordinates are referenced to Texas state plane coordinate system, south central zone nad83 us survey feet.
- Elevations are referenced to low water depth (LWD) datum.
- This project was designed by the Galveston District of the U.S. Army Corps of Engineers. The initials and signatures and registration designations of individuals appear on these project documents within the scope of their employment as required by 47 USC 16110-16112.
- The information depicted on this survey map represents the results of surveys made on the dates indicated and can only be considered as indicating the general conditions existing at that time. These conditions are subject to rapid change due to shoaling events. A prudent mariner should not rely exclusively on the information provided here. Required by 33 CFR 209.325
- For the most up to date information please check our website at: <http://www.svg.usace.army.mil/Missions/Navigation/HydrographicSurveys/>

Service Layer Credits: World Topographic Map: Texas Parks & Wildlife, Esri, HERE, Garmin, INCREMENT P, USGS, MET/NASA, EPA, USDA
World Ocean Base: Esri, GEBCO, DeLorme, NaturalVue
World Imagery: Maxar, Microsoft
World Imagery: Maxar

Additional Combined Survey Dates and Stationing:

COMB_SURV_INFO_HERE

Coordinate System: NAD 1983 StatePlane Texas South FIPS 4205 Feet
Projection: Lambert Conformal Conic

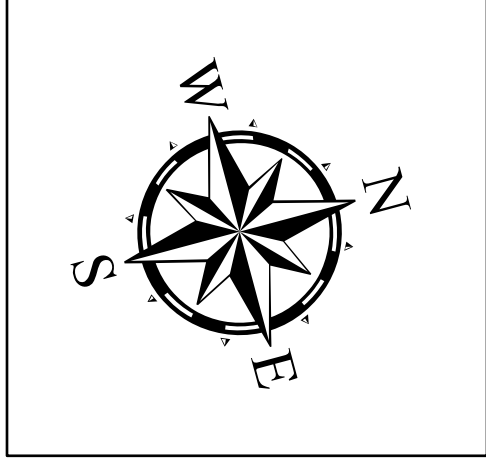
Dredging Reach Extent

0 0.1 0.2 0.4 Miles

Hydrographic Survey Extent

0 85 170 340 Feet

Latest Survey Collection Date: 09 March 2023	Authorized Depth: -13ft.
Document Page: 1 of 1	Side Slope Ratio: (Rise : Run)
Scale: 1:1,000	PDF Print Date: 3/13/2023
Mapped by: M3AOXPAC	
Additional Imagery info:	



HYDROGRAPHIC SURVEY

U.S. ARMY ENGINEER DISTRICT
CORPS OF ENGINEERS
GALVESTON, TEXAS

Station: 0+000 to 1+496

CHANNEL TO PORT MANSFIELD

Small Craft Basin