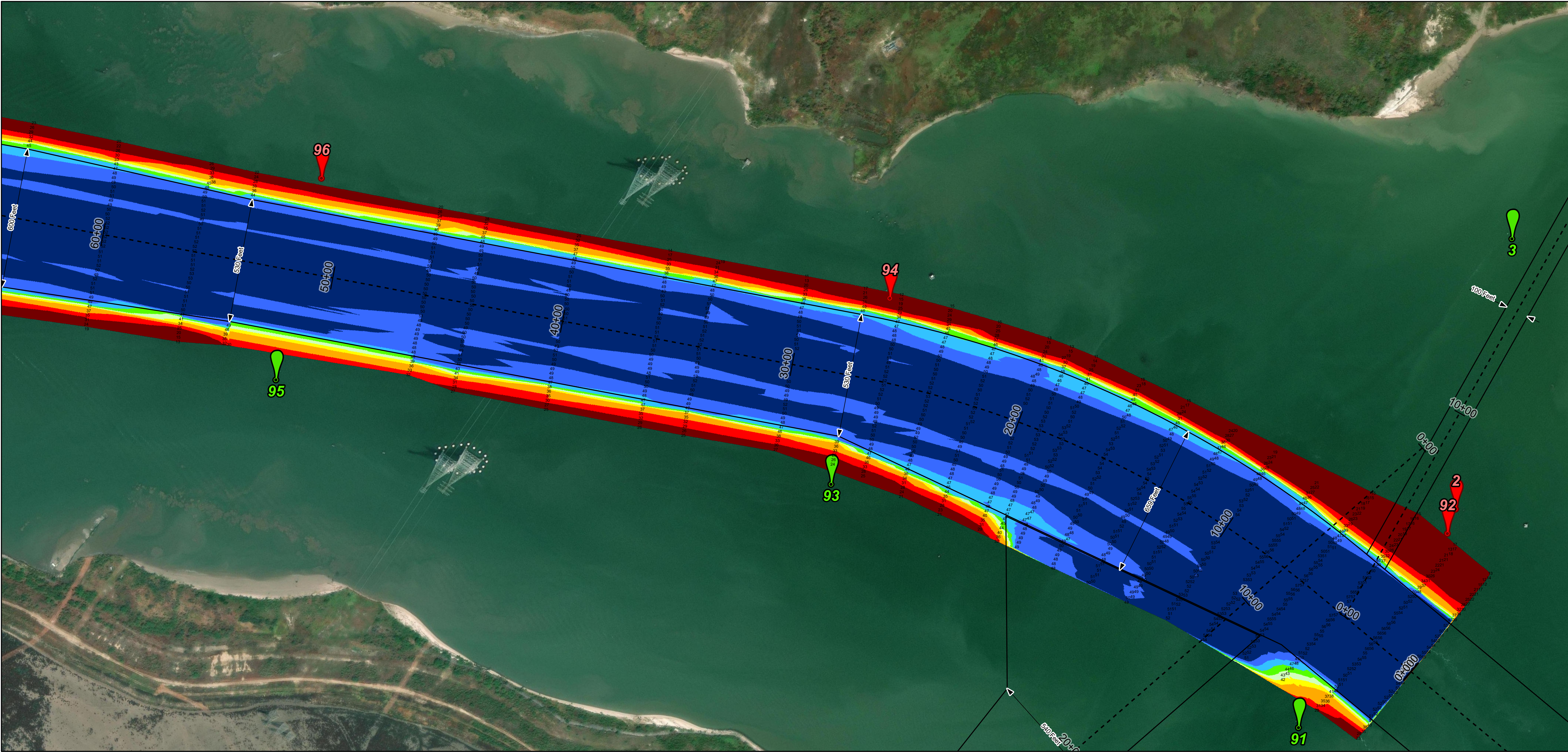
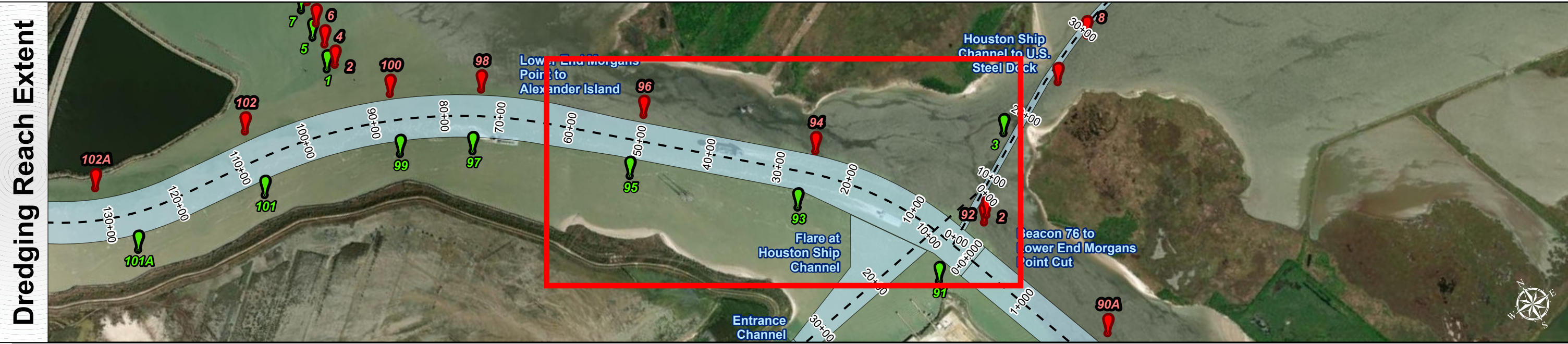


# Houston Ship Channel: Lower End Morgans Point to Alexander Island



U.S. Army Corps of Engineers  
Galveston District





**Channel Features**

- Channel Center Line
- Channel Toe
- Channel Dimensions

**Aids to Navigation**

- Green Side Aids
- Red Side Aids
- Lights

**MLLW**

≤ 30	30 - 35	35 - 40	40 - 42	42 - 44	44 - 46	46 - 48	48 - 50	> 50
------	---------	---------	---------	---------	---------	---------	---------	------

NOTES:  
1. Horizontal coordinates are referenced to Texas state plane coordinate system, south central zone nad83 us survey feet.  
2. Elevations are referenced to mean lower low tide (MLLW) datum.  
3. This project was designed by the Galveston District of the U.S. Army Corps of Engineers. The initials and signatures and registration designations of individuals appear on these project documents within the scope of their employment as required by 47 CFR 111.11-111.12.  
4. The information depicted on this survey map represents the results of surveys made on the dates indicated and can only be considered as indicating the general conditions existing at that time. These conditions are subject to rapid change due to shoaling events. A prudent mariner should not rely exclusively on the information provided here. Required by 33 CFR 209.325.  
5. For the most up to date information please check our website at: <http://www.svg.usace.army.mil/Missions/Navigation/HydrographicSurveys/>

Service Layer Credits: World Topographic Map: City of Houston, HPB, Texas Parks & Wildlife, Esri, HERE, Garmin, INCREMENT P, USGS, METI/NASA, NGA, EPA, USA, World Imagery: Maxar, World Ocean Base: Esri, GEBCO, Garmin, NaturalVue

Additional Combined Survey Dates and Stationing:  
Combined surveys: 20240125\_PR\_T01\_00P00\_100P00; 20240129\_PR\_100P00\_295P00.

Coordinate System: NAD 1983 StatePlane Texas South Central FIPS 4204 Feet  
Projection: Lambert Conformal Conic

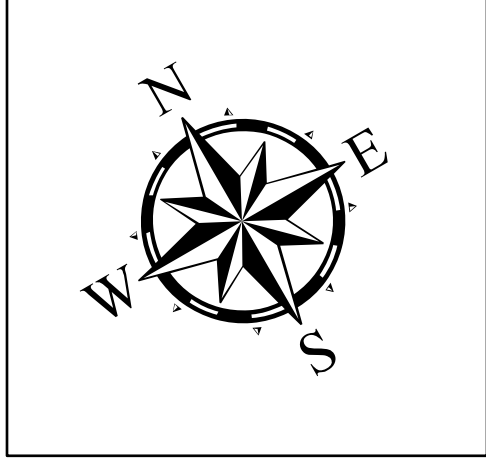
Dredging Reach Extent

0 0.25 0.5 1 Miles

Hydrographic Survey Extent

0 215 430 860 Feet

Latest Survey Collection Date: 29 January 2024		Authorized Depth: -46.5ft.
Document Page: 1 of 5	Website Index Number: 25	Side Slope Ratio: 1:2.5 (Rise : Run)
Scale: 1:2,500		PDF Print Date: 3/15/2024
Mapped by: m3odnmhg		
Additional Imagery info:		



**HYDROGRAPHIC SURVEY**

U.S. ARMY ENGINEER DISTRICT  
CORPS OF ENGINEERS  
GALVESTON, TEXAS

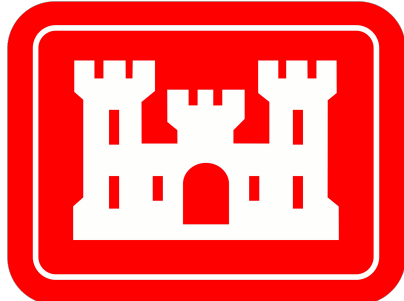
**Station: 0+000 to 295+00**

**HOUSTON**

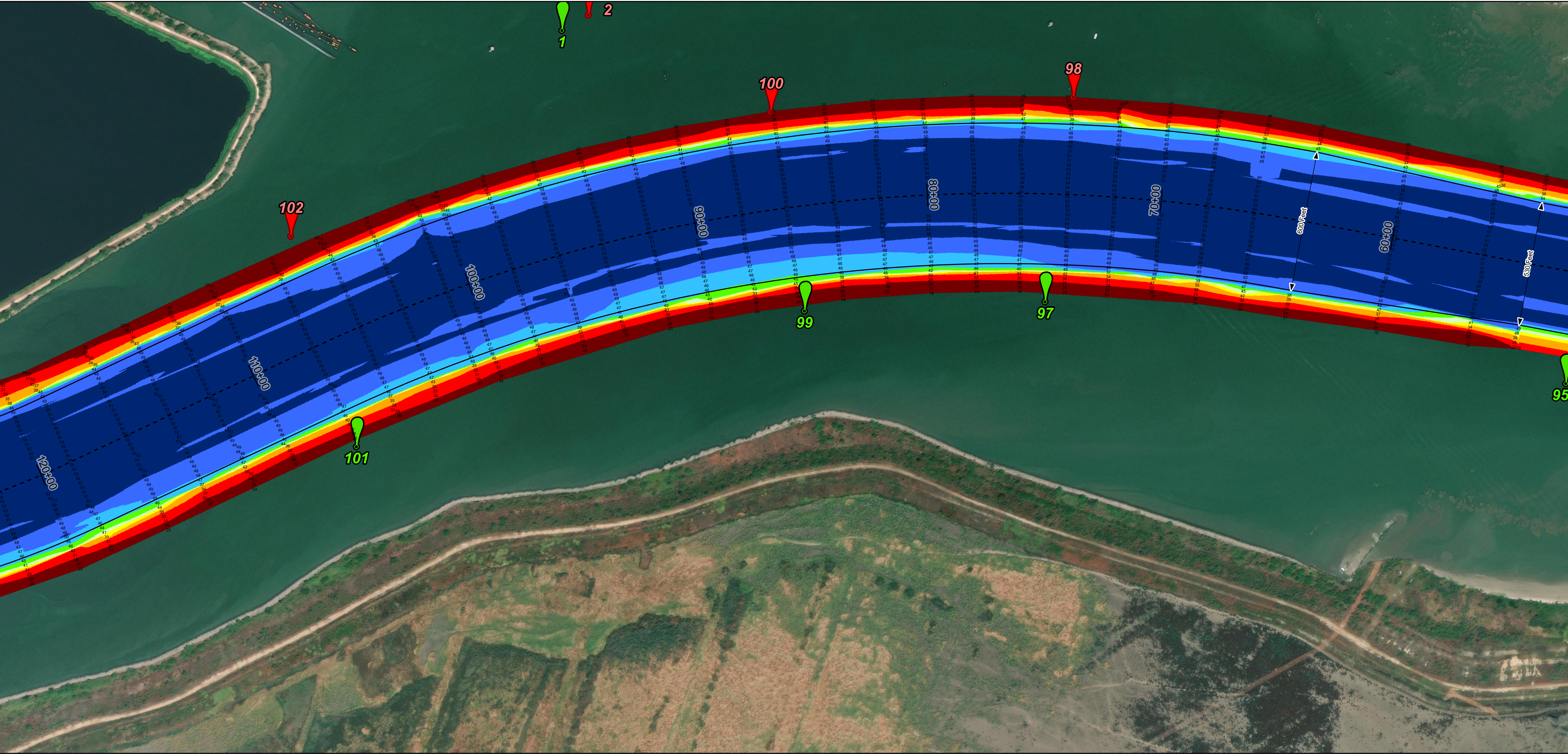
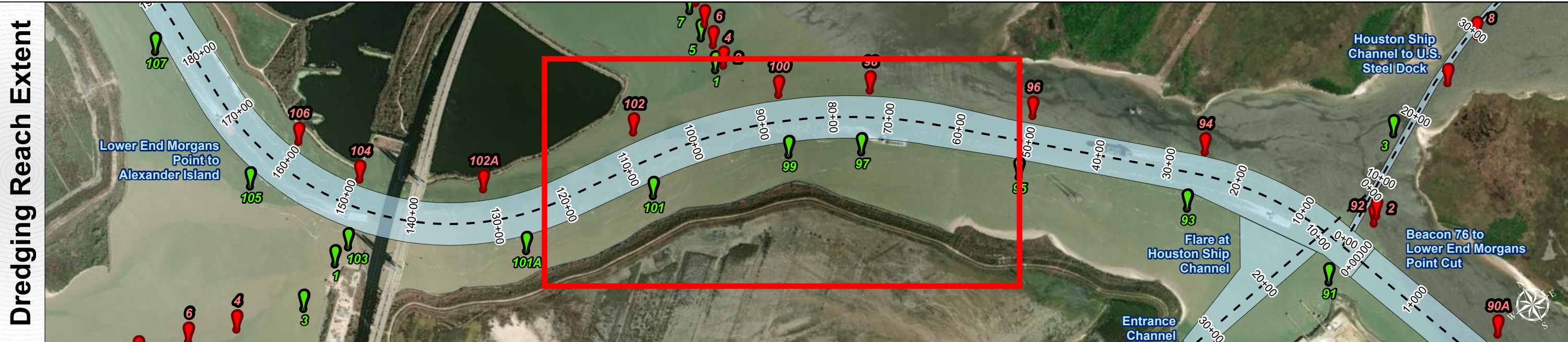
Lower End Morgans Point to Alexander Island



# Houston Ship Channel: Lower End Morgans Point to Alexander Island



U.S. Army Corps of Engineers  
Galveston District



**Channel Features**

- Channel Center Line
- Channel Toe
- Channel Dimensions

**Aids to Navigation**

- Green Side Aids
- Red Side Aids
- Lights

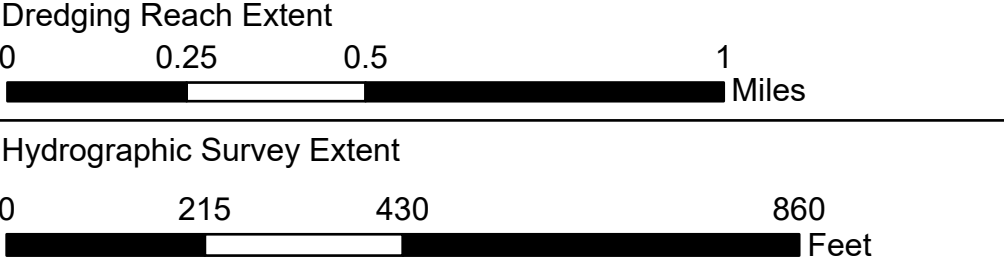
**MLLW**

≤ 30 30 - 35 35 - 40 40 - 42 42 - 44 44 - 46 46 - 48 48 - 50 > 50

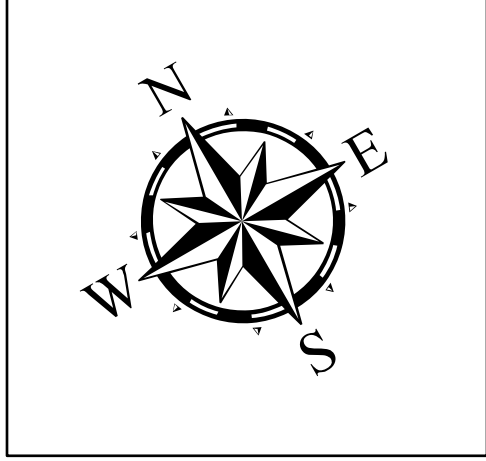
NOTES:  
1. Horizontal coordinates are referenced to Texas state plane coordinate system, south central zone nad83 us survey feet.  
2. Elevations are referenced to mean lower low tide (MLLW) datum.  
3. This project was designed by the Galveston District of the U.S. Army Corps of Engineers. The initials and signatures and registration designations of individuals appear on these project documents within the scope of their employment as required by 47 CFR 111.11-111.12.  
4. The information depicted on this survey map represents the results of surveys made on the dates indicated and can only be considered as indicating the general conditions existing at that time. These conditions are subject to rapid change due to shoaling events. A prudent mariner should not rely exclusively on the information provided here. Required by 33 CFR 209.325.  
5. For the most up to date information please check our website at: <http://www.svg.usace.army.mil/Missions/Navigation/HydrographicSurveys/>  
Service Layer Credits: World Topographic Map: City of Houston, HPB, Texas Parks & Wildlife, Esri, HERE, Garmin, INCREMENT P, USGS, METINASA, NGA, EPA, USDA  
World Imagery: Maxar  
World Ocean Base: Esri, GEBCO, Garmin, NaturalVue

Additional Combined Survey Dates and Stationing:  
Combined surveys: 20240125\_PR\_T01\_00P00\_100P00; 20240129\_PR\_100P00\_295P00.

Coordinate System: NAD 1983 StatePlane Texas South Central FIPS 4204 Feet  
Projection: Lambert Conformal Conic



Latest Survey Collection Date: 29 January 2024		Authorized Depth: -46.5ft.
Document Page: 2 of 5	Website Index Number: 26	Side Slope Ratio: 1:2.5 (Rise : Run)
Scale: 1:2,500		PDF Print Date: 3/15/2024
Mapped by: m3odnmhg		
Additional Imagery info:		

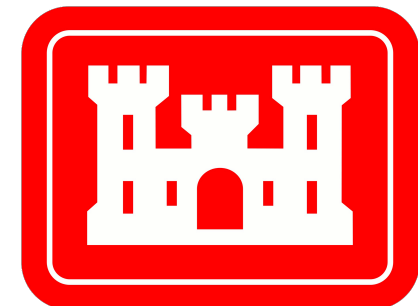


**HYDROGRAPHIC SURVEY**  
U.S. ARMY ENGINEER DISTRICT  
CORPS OF ENGINEERS  
GALVESTON, TEXAS

**Station: 0+000 to 295+00**  
**HOUSTON**  
Lower End Morgans Point to Alexander Island



# Houston Ship Channel: Lower End Morgans Point to Alexander Island



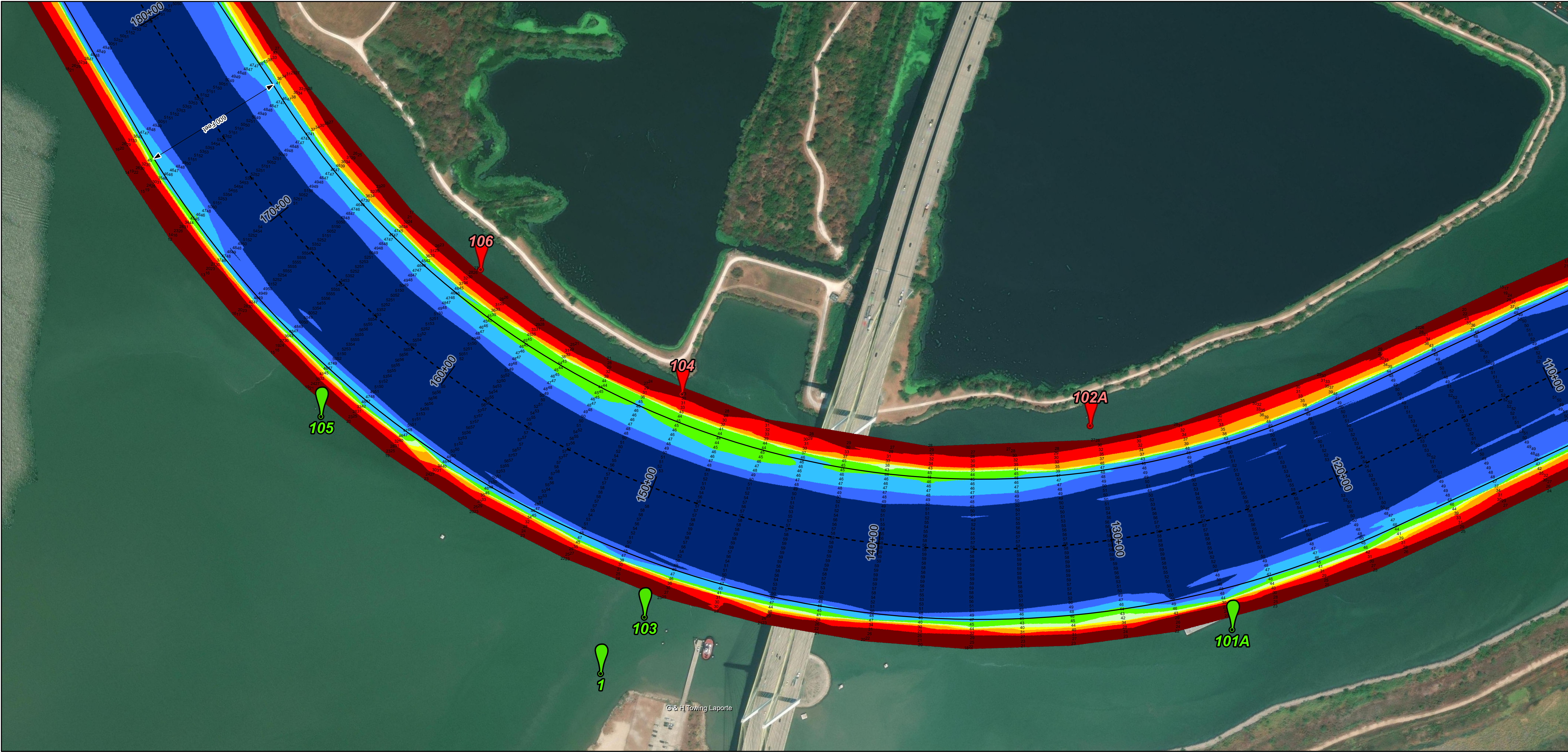
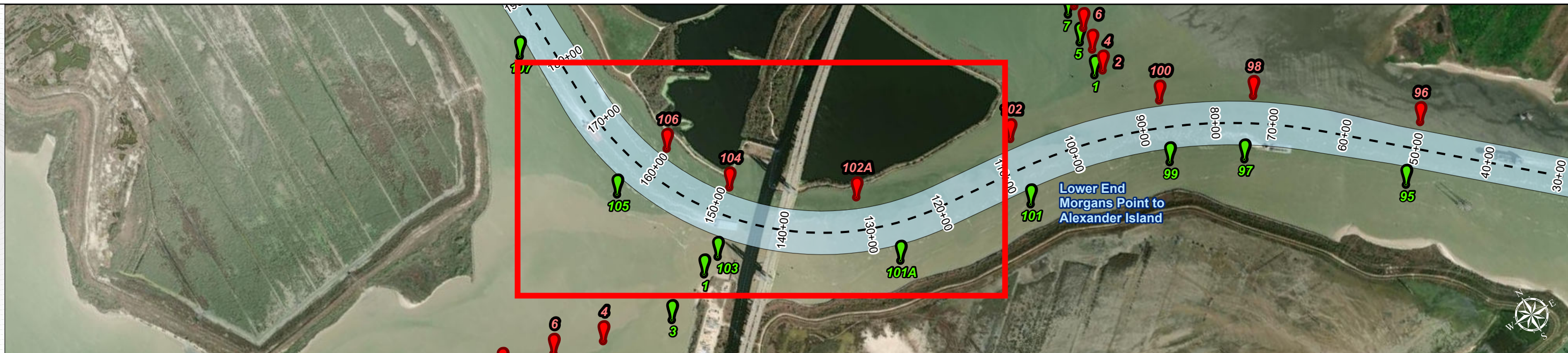
U.S. Army Corps of Engineers  
Galveston District



Regional Extent



Dredging Reach Extent



Channel Features

- Channel Center Line
- Channel Toe
- Channel Dimensions

Aids to Navigation

- Green Side Aids
- Red Side Aids
- Lights

MLLW



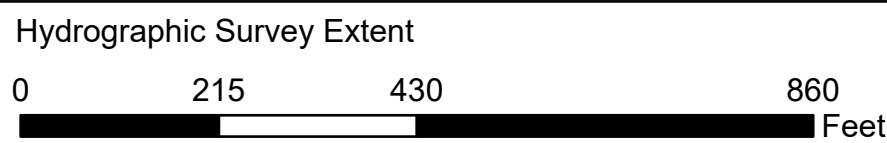
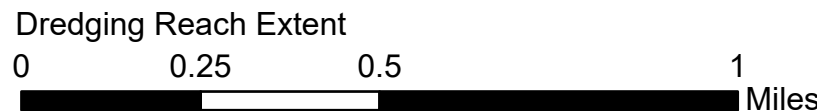
NOTES:

- Horizontal coordinates are referenced to Texas state plane coordinate system, south central zone nad83 us survey feet.
  - Elevations are referenced to mean lower low tide (MLLW) datum.
  - This project was designed by the Galveston District of the U.S. Army Corps of Engineers. The initials and signatures and registration designations of individuals appear on these project documents within the scope of their employment as required by 47 CFR 111.15-111.152.
  - The information depicted on this survey map represents the results of surveys made on the dates indicated and can only be considered as indicating the general conditions existing at that time. These conditions are subject to rapid change due to shoaling events. A prudent mariner should not rely exclusively on the information provided here. Required by 33 CFR 209.325.
  - For the most up to date information please check our website at: <http://www.svg.usace.army.mil/Missions/Navigation/HydrographicSurveys/>
- Service Layer Credits: World Topographic Map: City of Houston, HPB, Texas Parks & Wildlife, Esri, HERE, Garmin, INCREMENT P, USGS, METI/NASA, NGA, EPA, USDA  
World Imagery: Maxar  
World Ocean Base: Esri, GEBCO, Garmin, NaturalVue

Additional Combined Survey Dates and Stationing:

Combined surveys: 20240125\_PR\_T01\_00P00\_100P00; 20240129\_PR\_100P00\_295P00.

Coordinate System: NAD 1983 StatePlane Texas South Central FIPS 4204 Feet  
Projection: Lambert Conformal Conic

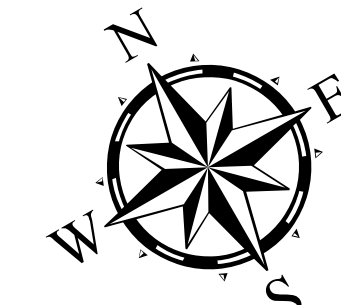


**HYDROGRAPHIC SURVEY**

U.S. ARMY ENGINEER DISTRICT  
CORPS OF ENGINEERS  
GALVESTON, TEXAS

Station: 0+000 to 295+00

HOUSTON  
Lower End Morgans Point to Alexander Island



Latest Survey Collection Date: 29 January 2024

Document Page: 3 of 5

Website Index Number: 27

Authorized Depth: -46.5ft.

Side Slope Ratio: 1:2.5 (Rise : Run)

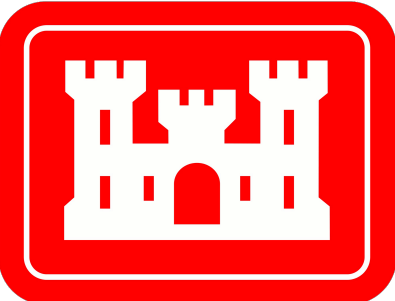
PDF Print Date: 3/15/2024

Mapped by: m3odnmhg

Additional Imagery info:



# Houston Ship Channel: Lower End Morgans Point to Alexander Island



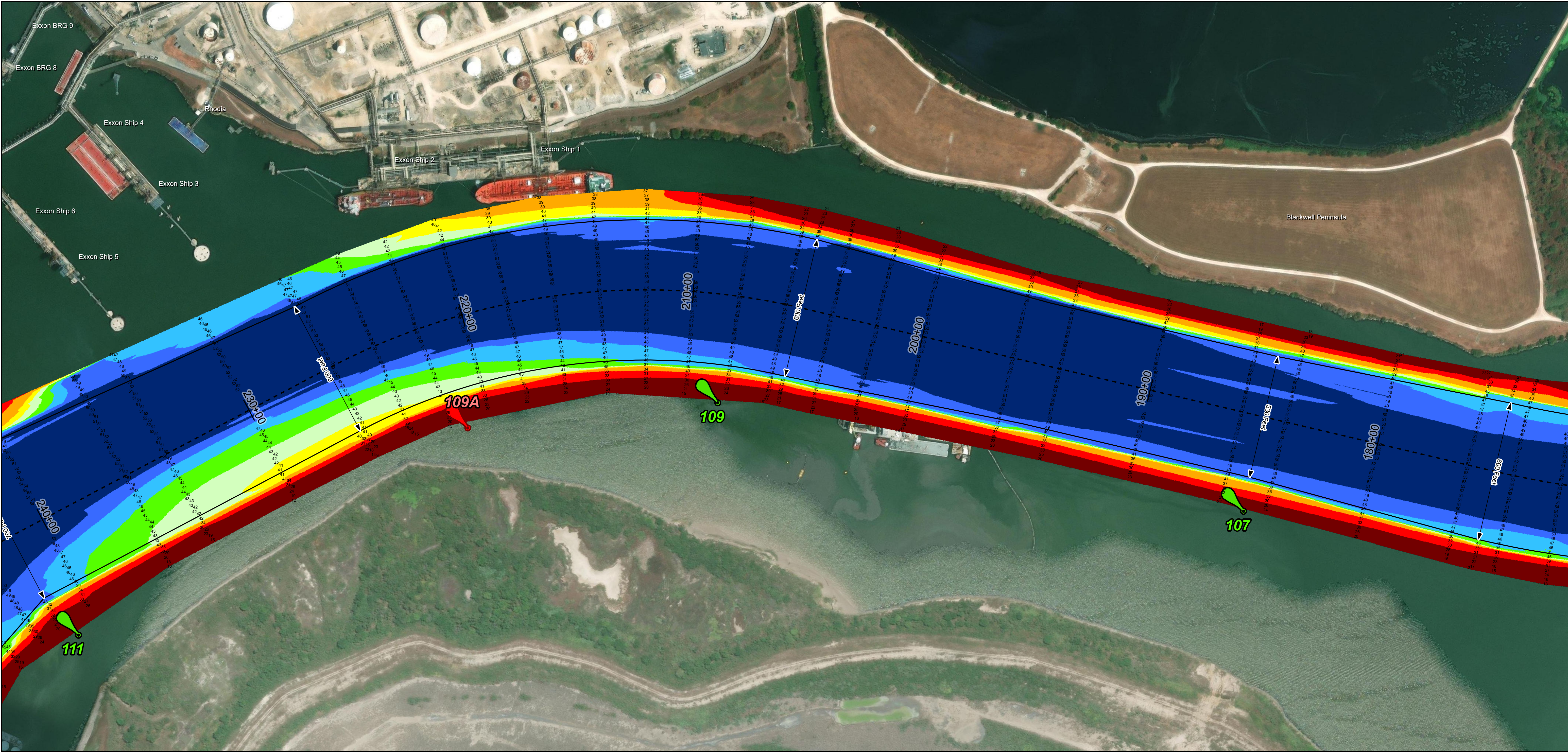
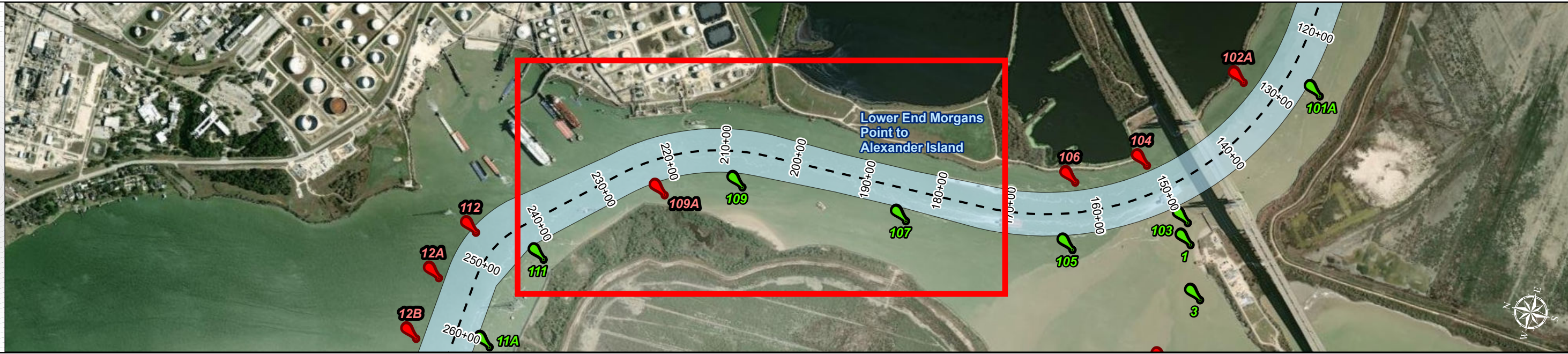
U.S. Army Corps of Engineers  
Galveston District



## Regional Extent



## Dredging Reach Extent



### Channel Features

- Channel Center Line
- Channel Toe
- ↔ Channel Dimensions

### Aids to Navigation

- Green Side Aids
- Red Side Aids
- Lights

### MLLW



### NOTES:

- Horizontal coordinates are referenced to Texas state plane coordinate system, south central zone nad83 survey feet.
  - Elevations are referenced to mean lower low tide (MLLW) datum.
  - This project was designed by the Galveston District of the U.S. Army Corps of Engineers. The initials and signatures and registration designations of individuals appear on these project documents within the scope of their employment as required by 47 CFR 111.01-0112.
  - The information depicted on this survey map represents the results of surveys made on the dates indicated and can only be considered as indicating the general conditions existing at that time. These conditions are subject to rapid change due to shoaling events. A prudent mariner should not rely exclusively on the information provided here. Required by 33 CFR 209.325.
  - For the most up to date information please check our website at: <http://www.svg.usace.army.mil/Missions/Navigation/HydrographicSurveys/>
- Service Layer Credits: World Topographic Map: City of Houston, HPB, Texas Parks & Wildlife, Esri, HERE, Garmin, INCREMENT P, USGS, METINASA, NGA, EPA, USDO, World Imagery: Maxar, World Ocean Base: Esri, GEBCO, Garmin, NaturalVue

### Additional Combined Survey Dates and Stationing:

Combined surveys: 20240125\_PR\_T01\_00P00\_100P00; 20240129\_PR\_100P00\_295P00.

Coordinate System: NAD 1983 StatePlane Texas South Central FIPS 4204 Feet  
Projection: Lambert Conformal Conic

Dredging Reach Extent  
0 0.25 0.5 1 Miles

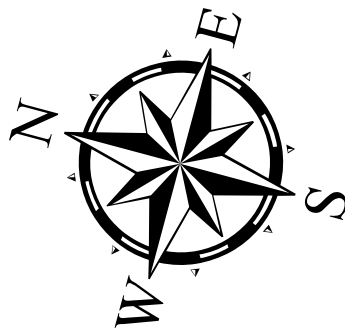
Hydrographic Survey Extent  
0 215 430 860 Feet

## HYDROGRAPHIC SURVEY

U.S. ARMY ENGINEER DISTRICT  
CORPS OF ENGINEERS  
GALVESTON, TEXAS

Station: 0+000 to 295+00

HOUSTON  
Lower End Morgans Point to Alexander Island



Latest Survey Collection Date: 29 January 2024

Document Page: 4 of 5

Website Index Number: 28

Authorized Depth: -46.5ft.

Side Slope Ratio: 1:2.5 (Rise : Run)

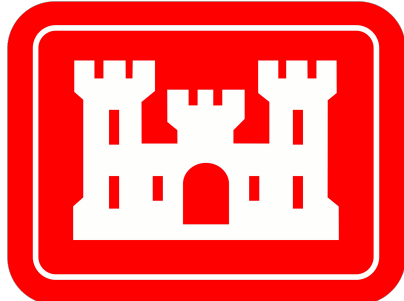
PDF Print Date: 3/15/2024

Mapped by: m3odnmhg

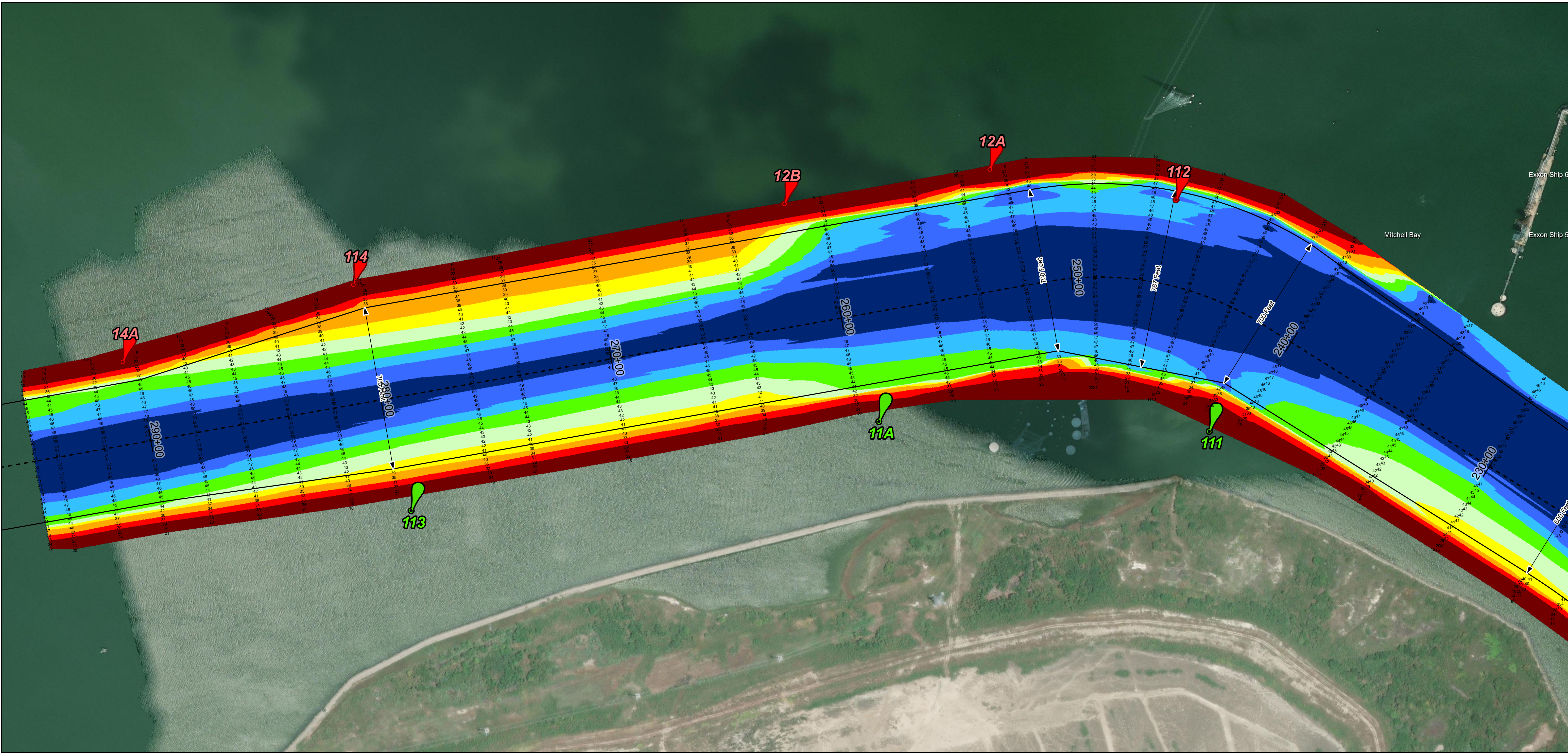
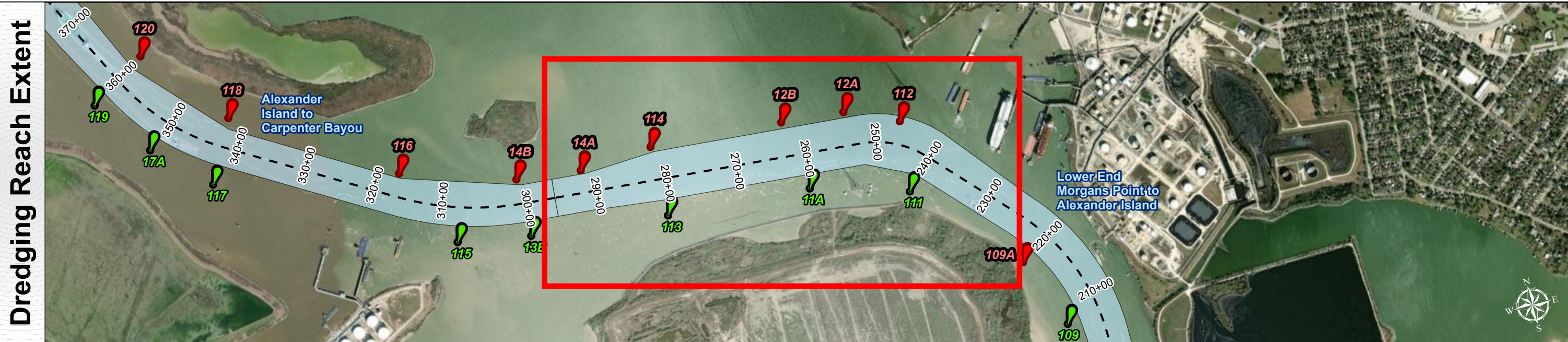
Additional Imagery info:



# Houston Ship Channel: Lower End Morgans Point to Alexander Island



U.S. Army Corps of Engineers  
Galveston District



**Channel Features**

- Channel Center Line
- Channel Toe
- Channel Dimensions

**Aids to Navigation**

- Green Side Aids
- Red Side Aids
- Lights

**MLLW**

≤ 30	30 - 35	35 - 40	40 - 42	42 - 44	44 - 46	46 - 48	48 - 50	> 50
------	---------	---------	---------	---------	---------	---------	---------	------

**NOTES:**

- Horizontal coordinates are referenced to Texas state plane coordinate system, south central zone nad83 us survey feet.
- Elevations are referenced to mean lower low tide (MLLW) datum.
- This project was designed by the Galveston District of the U.S. Army Corps of Engineers. The initials and signatures and registration designations of individuals appear on these project documents within the scope of their employment as required by 47 CFR 111.1-111.12.
- The information depicted on this survey map represents the results of surveys made on the dates indicated and can only be considered as indicating the general conditions existing at that time. These conditions are subject to rapid change due to shoaling events. A prudent mariner should not rely exclusively on the information provided here. Required by 33 CFR 209.325.
- For the most up to date information please check our website at: <http://www.svg.usace.army.mil/Missions/Navigation/HydrographicSurveys/>

Service Layer Credits: World Topographic Map: City of Houston, HPB, Texas Parks & Wildlife, Esri, HERE, Garmin, INCREMENT P, USGS, METINASA, NGA, EPA, USDA, World Imagery, Maxar, World Ocean Base, Esri, GEBCO, Garmin, NaturalVue

**Additional Combined Survey Dates and Stationing:**

Combined surveys: 20240125\_PR\_T01\_00P00\_100P00; 20240129\_PR\_100P00\_295P00.

**Coordinate System:** NAD 1983 StatePlane Texas South Central FIPS 4204 Feet  
**Projection:** Lambert Conformal Conic

**Dredging Reach Extent**

0	0.25	0.5	1
---	------	-----	---

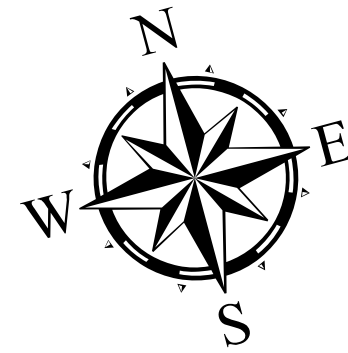
Miles

**Hydrographic Survey Extent**

0	215	430	860
---	-----	-----	-----

Feet

Latest Survey Collection Date: 29 January 2024		Authorized Depth: -46.5ft.	
Document Page: 5 of 5	Website Index Number: 29	Side Slope Ratio: 1:2.5 (Rise : Run)	
Scale: 1:2,500		PDF Print Date: 3/15/2024	
Mapped by: m3odnmhg			
Additional Imagery info:			



**HYDROGRAPHIC SURVEY**  
U.S. ARMY ENGINEER DISTRICT  
CORPS OF ENGINEERS  
GALVESTON, TEXAS  
**Station: 0+000 to 295+00**  
**HOUSTON**  
Lower End Morgans Point to Alexander Island