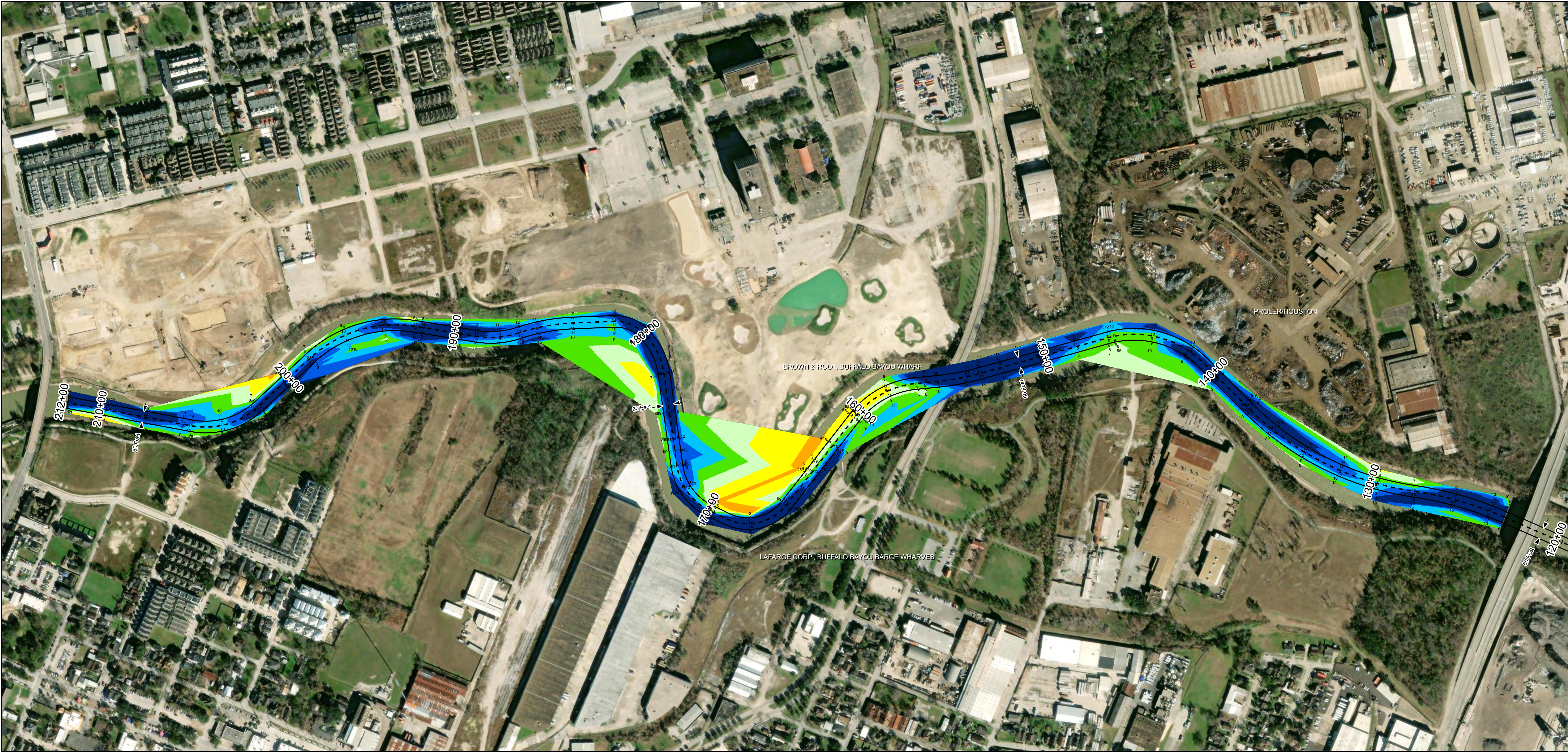
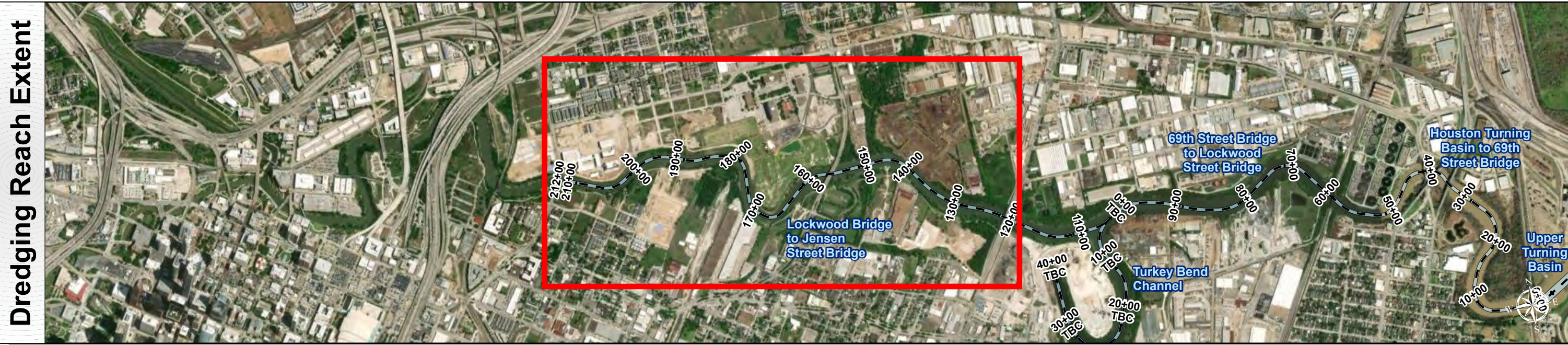


# Buffalo Bayou: Lockwood Bridge to Jensen Street Bridge



U.S. Army Corps of Engineers  
Galveston District





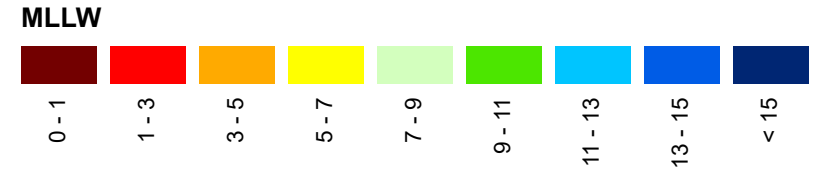
**Channel Features**

- Channel Center Line
- Channel Toe
- Channel Station Lines
- Channel Dimensions

**Aids to Navigation**

- Green Side Aids
- Red Side Aids
- Lights

**MLLW**



**NOTES:**

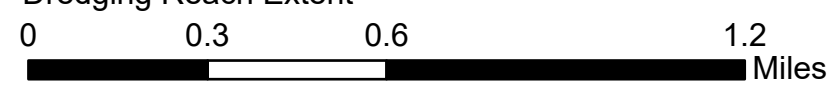
- Horizontal coordinates are referenced to Texas state plane coordinate system, south central zone nad83 us survey feet.
- Elevations are referenced to mean lower low tide (MLLW) datum.
- This project was designed by the Galveston District of the U.S. Army Corps of Engineers. The initials and signatures and registration designations of individuals appear on these project documents within the scope of their employment as required by 47CFR 117.11-117.12.
- The information depicted on this survey map represents the results of surveys made on the dates indicated and can only be considered as indicating the general conditions existing at that time. These conditions are subject to rapid change due to shoaling events. A prudent mariner should not rely exclusively on the information provided here. Required by 33 CFR 209.325.
- For the most up to date information please check our website at: <http://www.svg.usace.army.mil/Missions/Navigation/HydrographicSurveys/>

Service Layer Credits: World Topographic Map: City of Houston, HPB, Texas Parks & Wildlife, Esri, HERE, Garmin, INCREMENT P, USGS, METINASA, NGA, EPA, USDA, World Imagery, Maxar, World Ocean Base, Esri, GEBCO, Garmin, NaturalVue

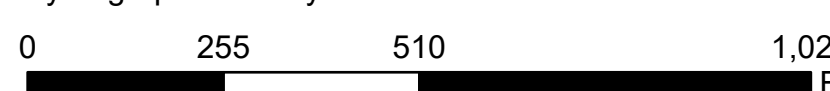
Additional Combined Survey Dates and Stationing:  
COMB\_SURV\_INFO\_HERE

Coordinate System: NAD 1983 StatePlane Texas South Central FIPS 4204 Feet  
Projection: Lambert Conformal Conic

Dredging Reach Extent



Hydrographic Survey Extent



Latest Survey Collection Date: 30 August 2023

Document Page: 1 of 1

Scale: 1:3,000

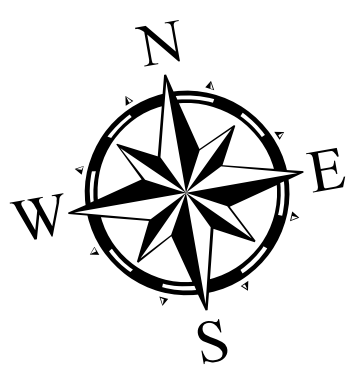
Mapped by: M3AOXPAC

Additional Imagery info:

Authorized Depth: -11ft.

Side Slope Ratio: (Rise : Run)

PDF Print Date: 12/5/2023



**HYDROGRAPHIC SURVEY**  
U.S. ARMY ENGINEER DISTRICT  
CORPS OF ENGINEERS  
GALVESTON, TEXAS

**Station: 123+22 to 212+00**  
**LIGHT DRAFT CHANNEL**  
Lockwood Bridge to Jensen Street Bridge