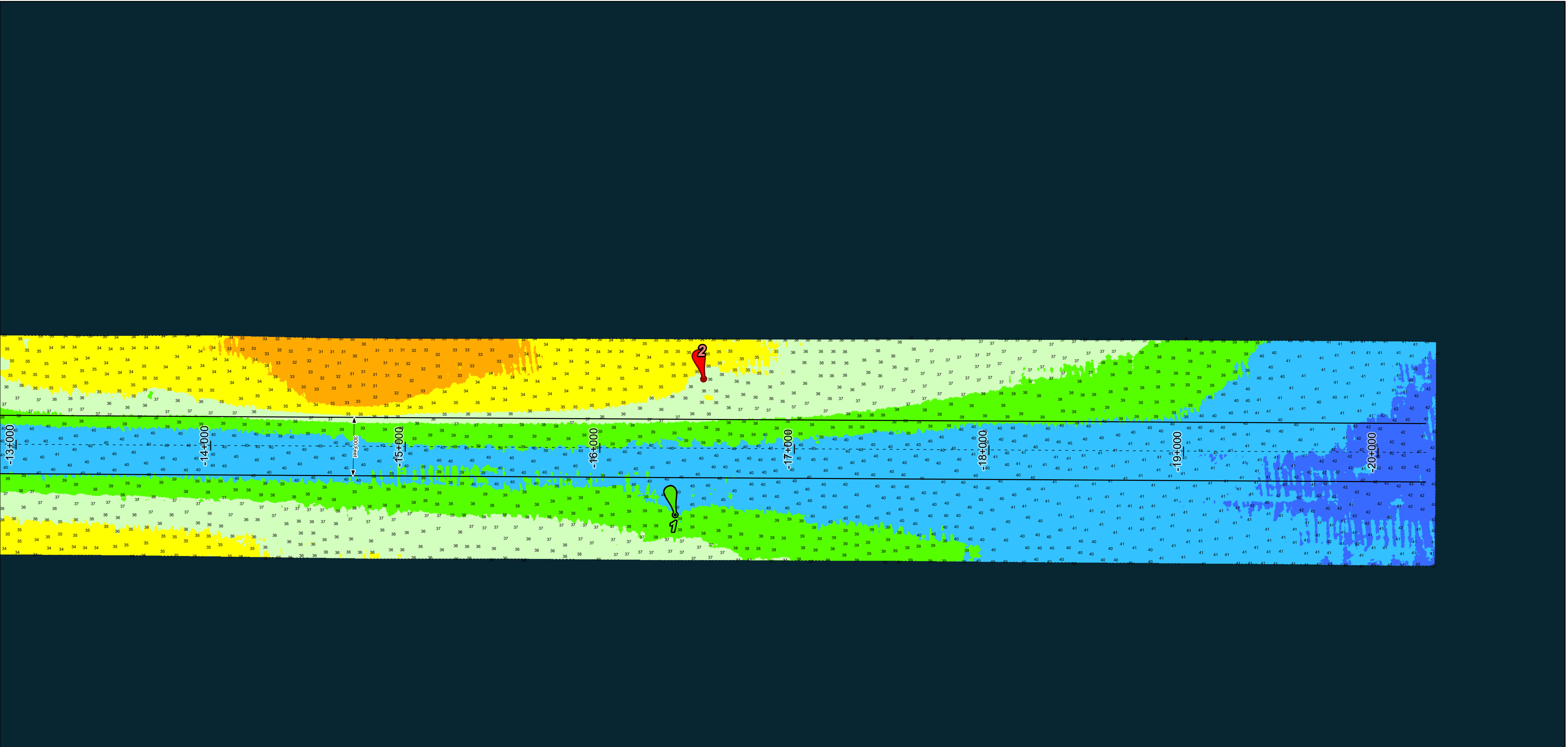
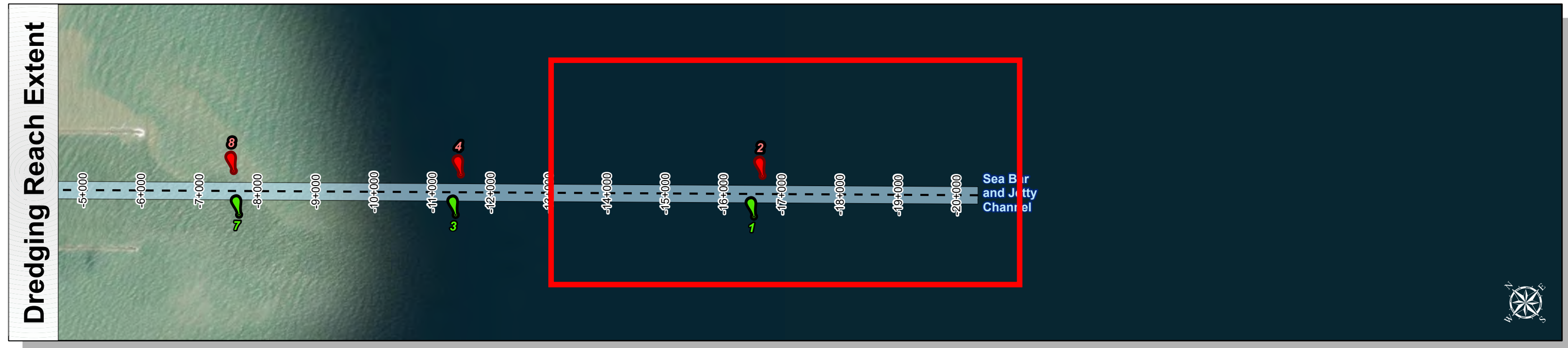
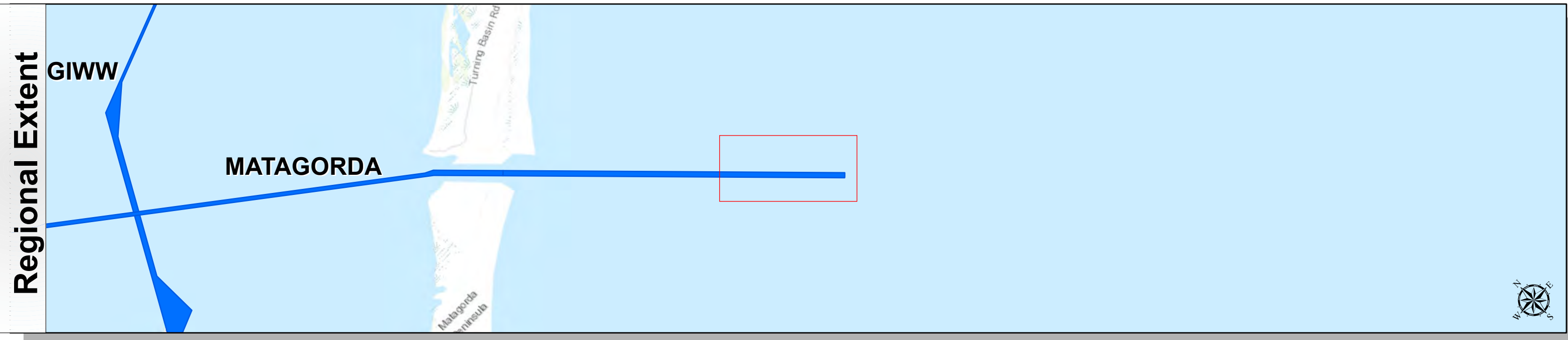


# Matagorda Ship Channel: Sea Bar and Jetty Channel



U.S. Army Corps of Engineers  
Galveston District



Latest Survey Collection Date: 10 March 2025	Authorized Depth: -40ft.
Document Page: 1 of 3	Width Range: 300ft to 350ft
Scale: 1:3,000	Side Slope Ratio: (Rise : Run)
Mapped by: m3odrmhg	PDF Print Date: 3/11/2025
Additional Imagery info:	



<b>Channel Features</b> Channel Center Line Channel Toe Channel Dimensions	<b>Aids to Navigation</b> Green Side Aids Red Side Aids Lights	<b>MLLW</b> 
---	---	-----------------

NOTES:  
 1. Horizontal coordinates are referenced to Texas State Plane Coordinate System, South Central Zone NAD83 US Survey Feet.  
 2. Elevations are referenced to Mean Lower Low Water (MLLW) datum.  
 3. This project was designed by the Galveston District of the U.S. Army Corps of Engineers. The initials and signatures and registration designations of individuals appear on these project documents within the scope of their employment as required by er1110-18152.  
 4. The information depicted on this survey map represents the results of surveys made on the dates indicated and can only be considered as indicating the general conditions existing at that time. These conditions are subject to rapid change due to shoaling events. A prudent mariner should not rely exclusively on the information provided here. Required by 33 CFR 209.325  
 5. For the most up to date information please check our website at: <http://www.svg.usace.army.mil/Missions/Navigation/HydrographicSurveys/>  
 Service Layer Credits: World Topographic Map: Texas Parks & Wildlife, Esri, HERE, Garmin, INCREMENT P, USGS, METINASA, NGA, EPA, USDA  
 World Imagery: Maxar  
 World Ocean Base: Esri, GEBCO, Garmin, NaturalVue

Additional Combined Survey Dates and Stationing:  
 COMB\_SURV\_INFO\_HERE

Coordinate System: NAD 1983 StatePlane Texas South Central FIPS 4204 Feet  
 Projection: Lambert Conformal Conic

Dredging Reach Extent  
 0 0.3 0.6 1.2 Miles

Hydrographic Survey Extent  
 0 255 510 1,020 Feet

**HYDROGRAPHIC SURVEY**  
 U.S. ARMY ENGINEER DISTRICT  
 CORPS OF ENGINEERS  
 GALVESTON, TEXAS

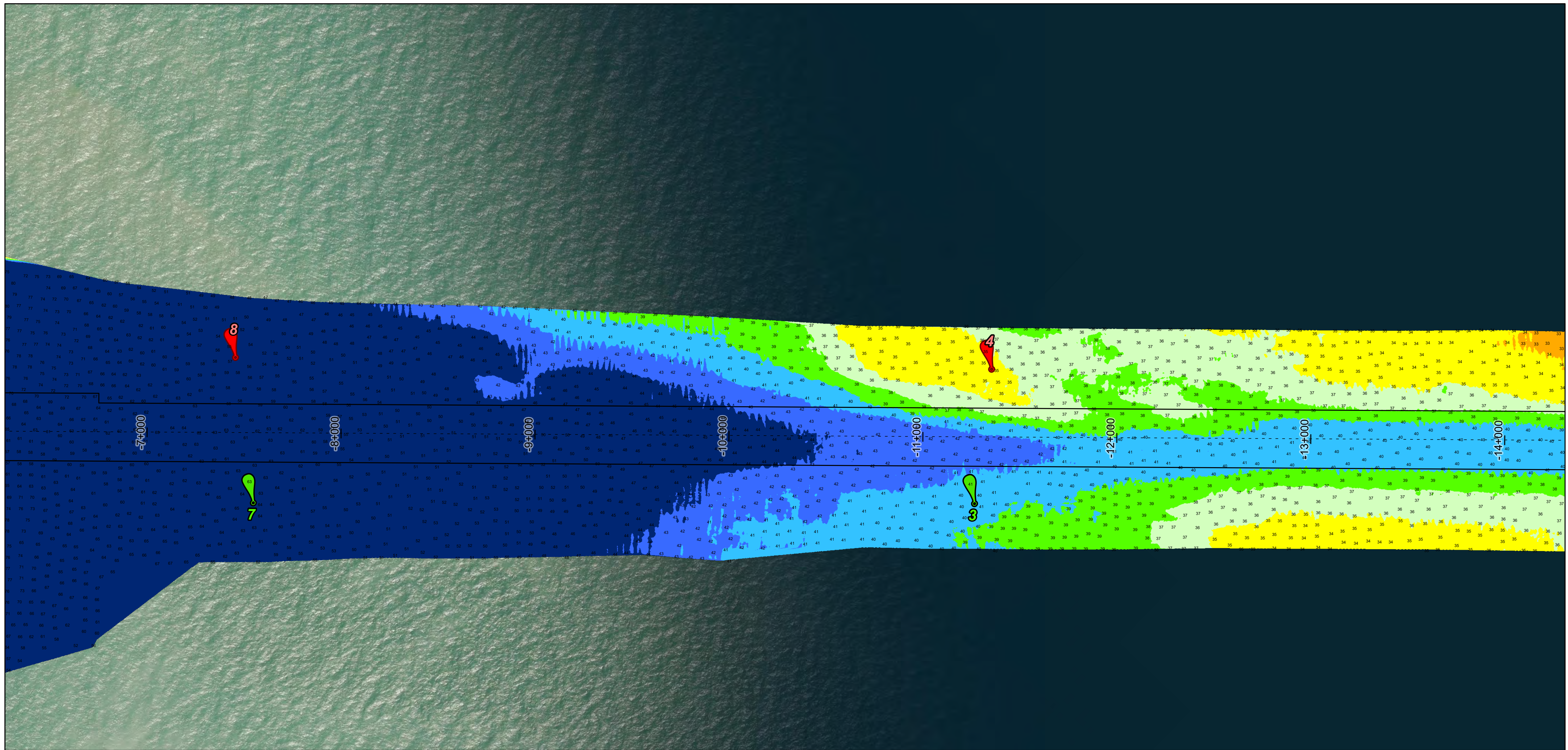
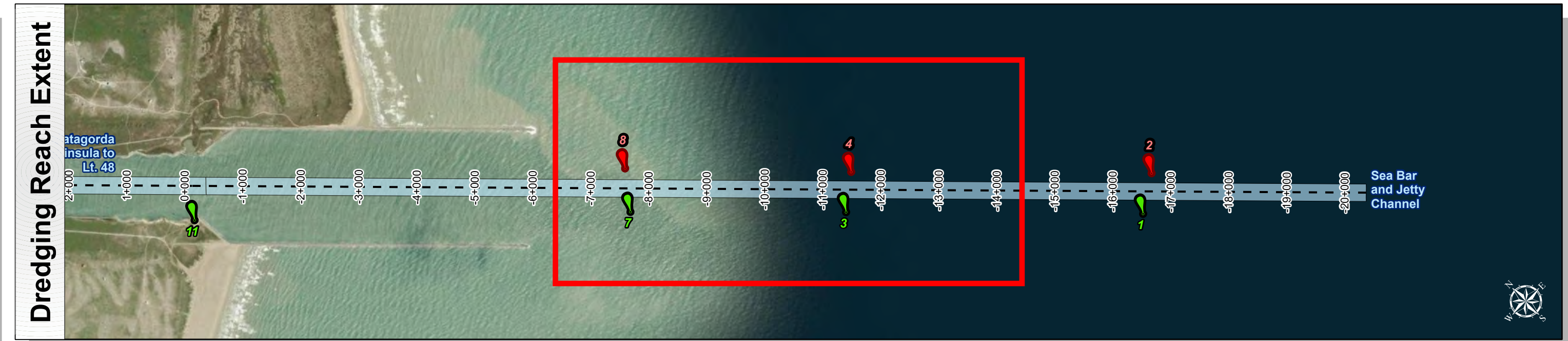
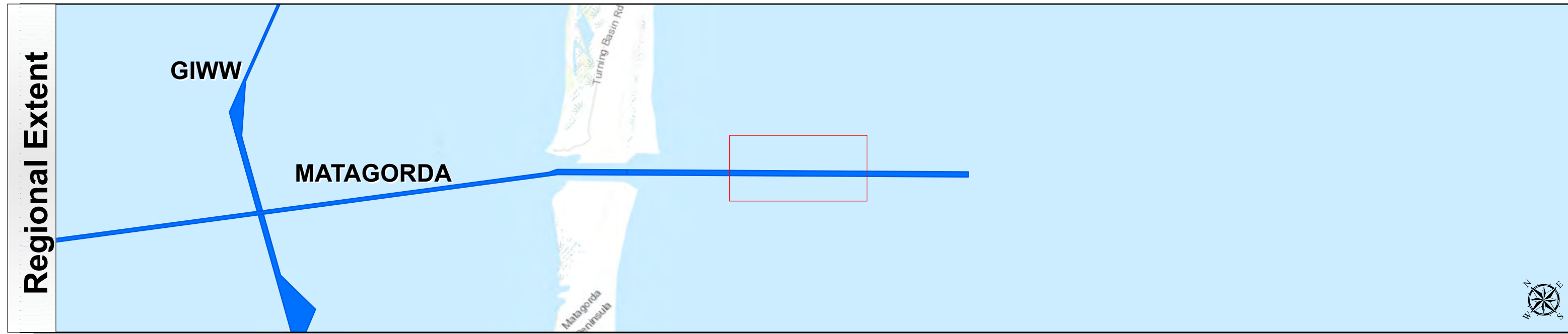
**Station: -20+000 to 0+000**  
 MATAGORDA  
 Sea Bar and Jetty Channel



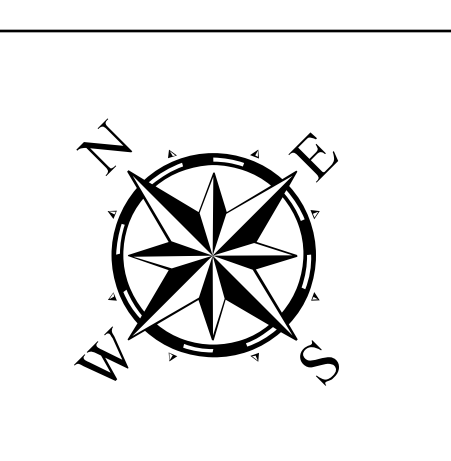
# Matagorda Ship Channel: Sea Bar and Jetty Channel



U.S. Army Corps of Engineers  
Galveston District



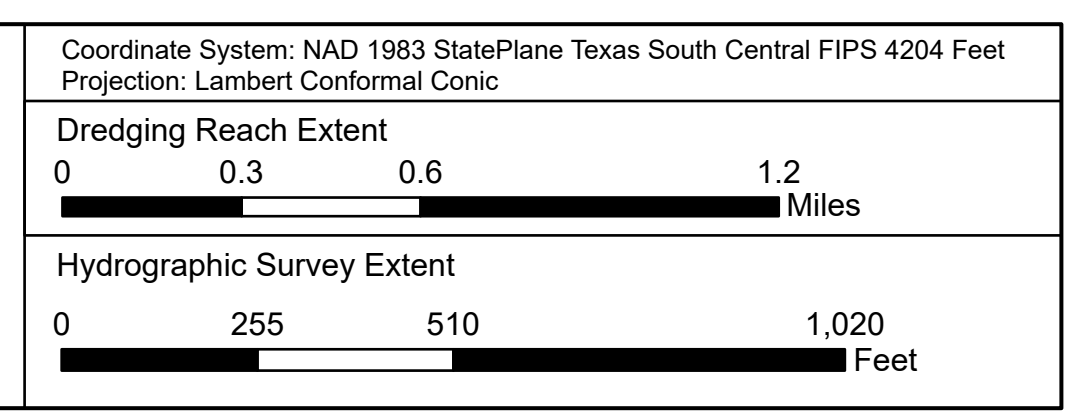
Latest Survey Collection Date: 10 March 2025	Authorized Depth: -40ft.
Document Page: 2 of 3	Width Range: 300ft to 350ft
Scale: 1:3,000	Side Slope Ratio: (Rise : Run)
Mapped by: m3odnmhg	PDF Print Date: 3/11/2025
Additional Imagery info:	



<b>Channel Features</b> Channel Center Line Channel Toe Channel Dimensions	<b>Aids to Navigation</b> Green Side Aids Red Side Aids Lights	<b>MLLW</b> 
---	---	-----------------

NOTES:  
 1. Horizontal coordinates are referenced to Texas State Plane Coordinate System, South Central Zone NAD83 US Survey Feet.  
 2. Elevations are referenced to Mean Lower Low Water (MLLW) datum.  
 3. This project was designed by the Galveston District of the U.S. Army Corps of Engineers. The initials and signatures and registration designations of individuals appear on these project documents within the scope of their employment as required by er1110-1-8132.  
 4. The information depicted on this survey map represents the results of surveys made on the dates indicated and can only be considered as indicating the general conditions existing at that time. These conditions are subject to rapid change due to shoaling events. A prudent mariner should not rely exclusively on the information provided here. Required by 33 CFR 209.225  
 5. For the most up to date information please check our website at: <http://www.svg.usace.army.mil/Missions/Navigation/HydrographicSurveys/>  
 Service Layer Credits: World Topographic Map: Texas Parks & Wildlife, Esri, HERE, Garmin, INCREMENT P, USGS, METINASA, NGA, EPA, USDA  
 World Imagery: Maxar  
 World Ocean Base: Esri, GEBCO, Garmin, NaturalVue

Additional Combined Survey Dates and Stationing:  
 COMB\_SURV\_INFO\_HERE



**HYDROGRAPHIC SURVEY**  
 U.S. ARMY ENGINEER DISTRICT  
 CORPS OF ENGINEERS  
 GALVESTON, TEXAS

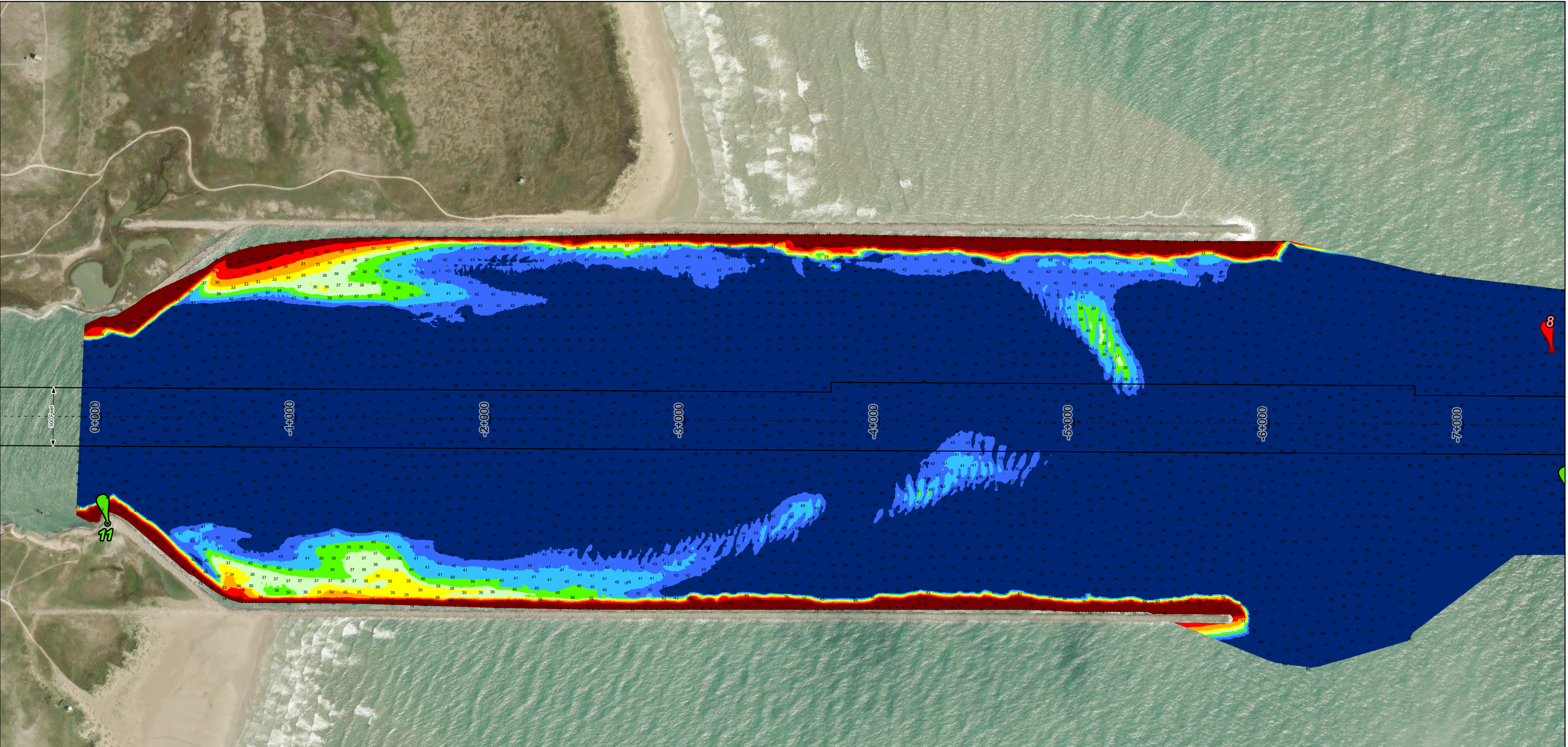
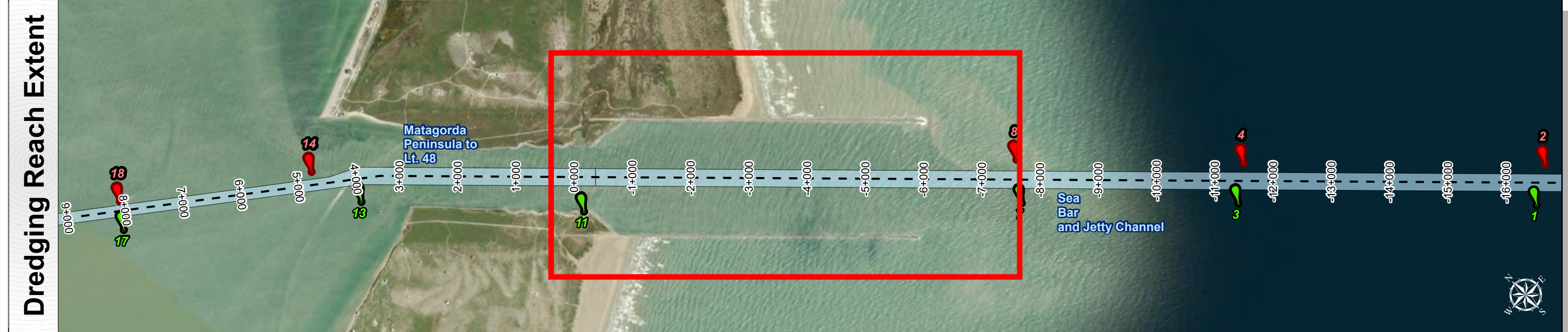
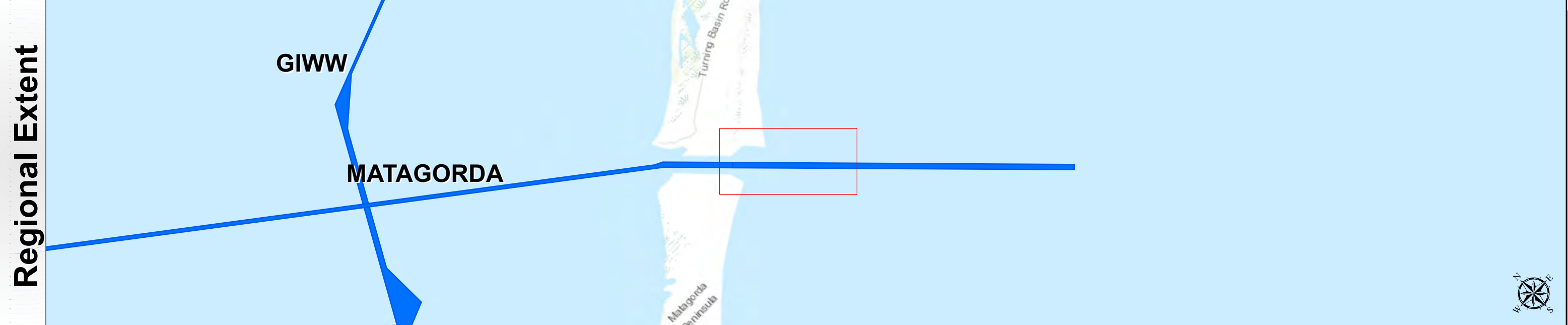
**Station: -20+000 to 0+000**  
**MATAGORDA**  
 Sea Bar and Jetty Channel



# Matagorda Ship Channel: Sea Bar and Jetty Channel



U.S. Army Corps of Engineers  
Galveston District



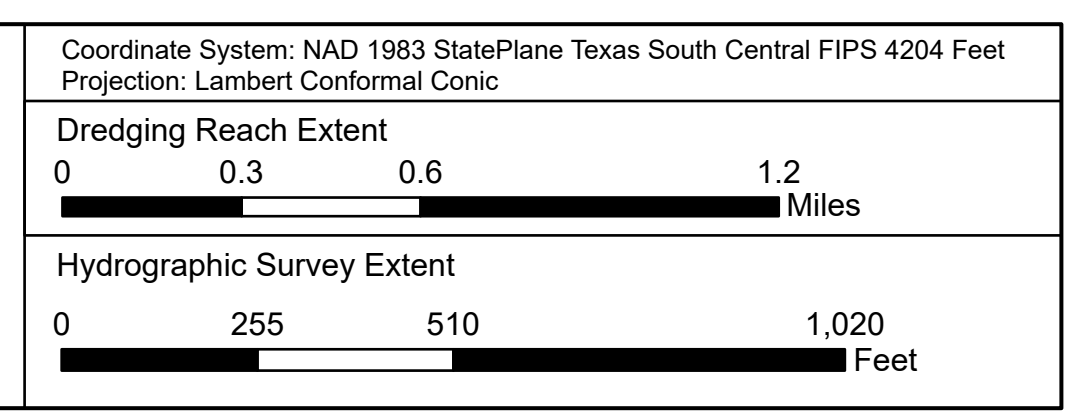
Authorized Depth: -40ft.	Latest Survey Collection Date: 10 March 2025
Width Range: 300ft to 350ft	Document Page: 3 of 3
Side Slope Ratio: (Rise : Run)	Website Index Number: 3
PDF Print Date: 3/11/2025	Scale: 1:3,000
	Mapped by: m3odrmhg
	Additional Imagery info:



Channel Features	Aids to Navigation	MLLW
--- Channel Center Line	Green Side Aids	0 - 25
— Channel Toe	Red Side Aids	25 - 30
↔ Channel Dimensions	Lights	30 - 34
		34 - 36
		36 - 38
		38 - 40
		40 - 42
		42 - 44
		< 44

NOTES:  
 1. Horizontal coordinates are referenced to Texas State Plane Coordinate System, South Central Zone NAD83 US Survey Feet.  
 2. Elevations are referenced to Mean Lower Low Water (MLLW) datum.  
 3. This project was designed by the Galveston District of the U.S. Army Corps of Engineers. The initials and signatures and registration designations of individuals appear on these project documents within the scope of their employment as required by er1110-1-8132.  
 4. The information depicted on this survey map represents the results of surveys made on the dates indicated and can only be considered as indicating the general conditions existing at that time. These conditions are subject to rapid change due to shoaling events. A prudent mariner should not rely exclusively on the information provided here. Required by 33 CFR 209.225.  
 5. For the most up to date information please check our website at: <http://www.svg.usace.army.mil/Missions/Navigation/HydrographicSurveys/>  
 Service Layer Credits: World Topographic Map: Texas Parks & Wildlife, Esri, HERE, Garmin, INCREMENT P, USGS, METINASA, NGA, EPA, USA, World Imagery: Maxar, World Ocean Base: Esri, GEBCO, Garmin, NaturalVue

Additional Combined Survey Dates and Stationing:  
 COMB\_SURV\_INFO\_HERE



**HYDROGRAPHIC SURVEY**  
 U.S. ARMY ENGINEER DISTRICT  
 CORPS OF ENGINEERS  
 GALVESTON, TEXAS

**Station: -20+000 to 0+000**  
**MATAGORDA**  
 Sea Bar and Jetty Channel