

Sabine Neches Waterway: Sabine Bank Channel



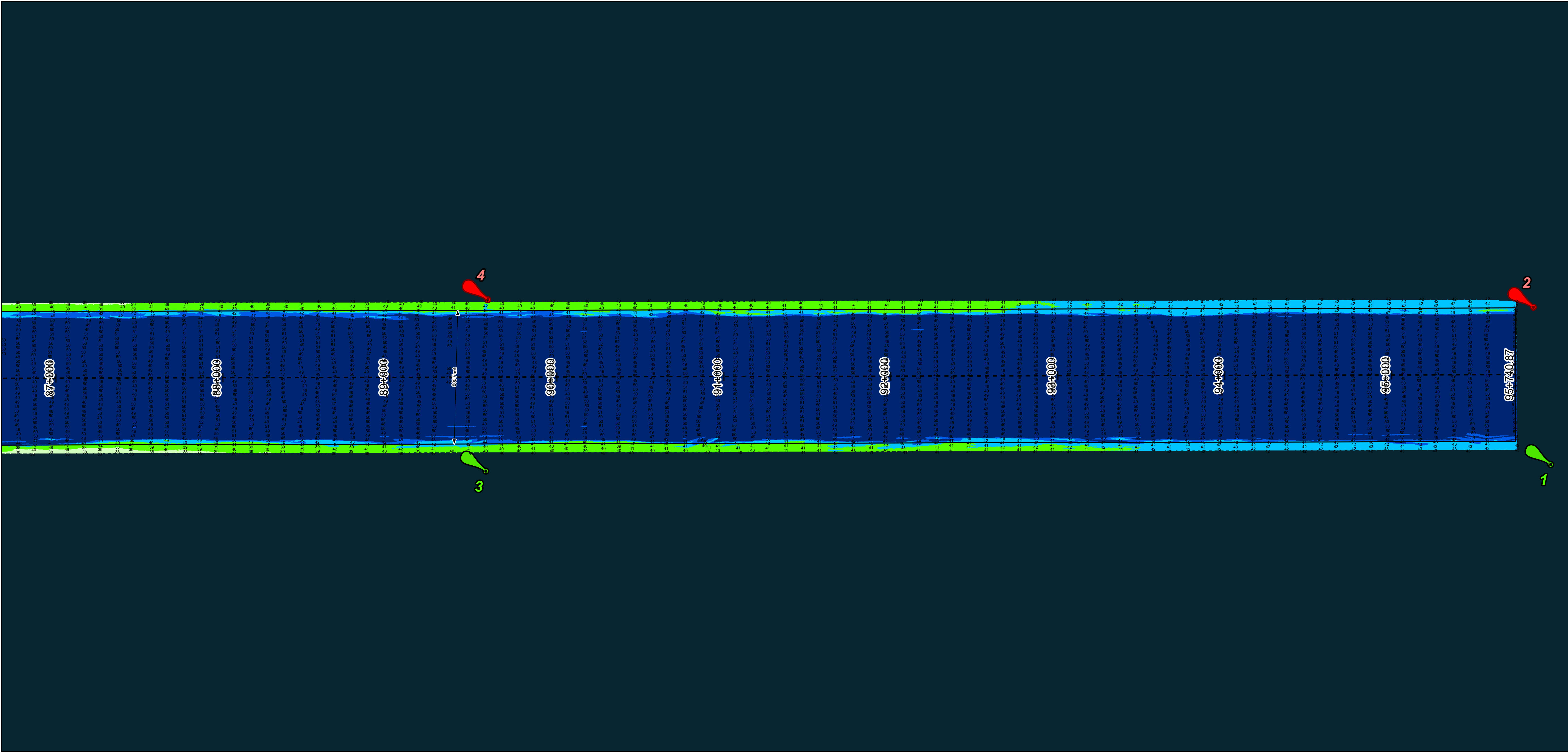
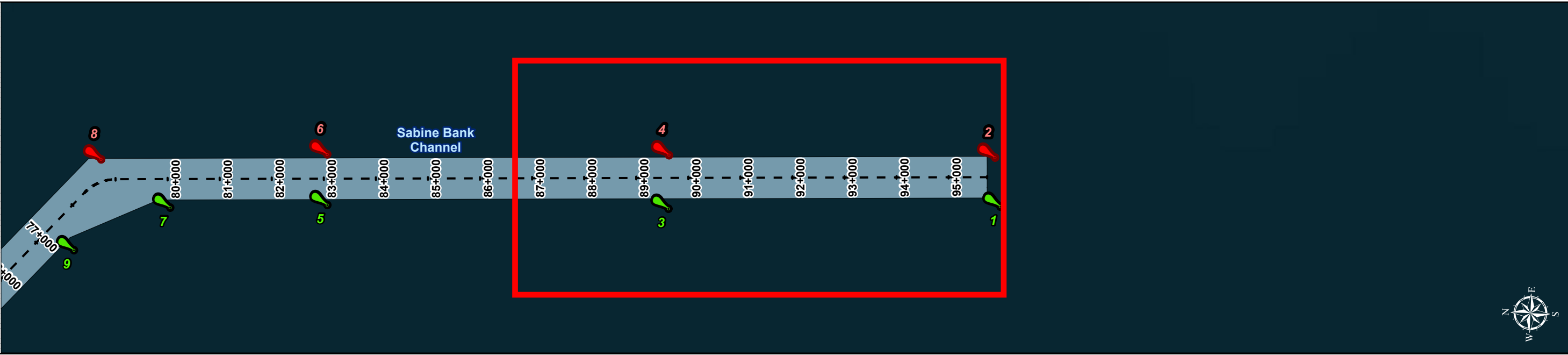
U.S. Army Corps of Engineers
Galveston District



Regional Extent

SABINE NECHES

Dredging Reach Extent



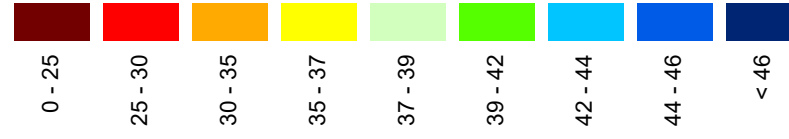
Channel Features

- Channel Center Line
- Channel Toe
- Channel Station Lines
- Channel Dimensions

Aids to Navigation

- Green Side Aids
- Red Side Aids
- Lights

MLLW



NOTES:

- Horizontal coordinates are referenced to Texas state plane coordinate system, south central zone nad83 us survey feet.
 - Elevations are referenced to mean lower low tide (MLLW) datum.
 - This project was designed by the Galveston District of the U.S. Army Corps of Engineers. The initials and signatures and registration designations of individuals appear on these project documents within the scope of their employment as required by 47 CFR 111.05-111.052.
 - The information depicted on this survey map represents the results of surveys made on the dates indicated and can only be considered as indicating the general conditions existing at that time. These conditions are subject to rapid change due to shoaling events. A prudent mariner should not rely exclusively on the information provided here. Required by 33 or 209.325
 - For the most up to date information please check our website at: <http://www.svg.usace.army.mil/Missions/Navigation/HydrographicSurveys/>
- Service Layer Credits: World Topographic Map, Texas Parks & Wildlife, Esri, HERE, Garmin, USGS, NOAA, EPA, USDA, NPS, World Imagery, Maxar, World Ocean Base, Esri, GEBCO, Garmin, NaturalVue

Additional Combined Survey Dates and Stationing:

Combined survey dates 20220603, CS_19P000_17P992; 20230516, PR_M105P000_M102P000; 20230516, PR_M03P000_M08P000; 20230517, PR_M40P598_M03P000; 20231205_AD_16_M117P072_M113P000; 20231208_AD_17_M113P000_M108P000; 20231208_AD_18_M108P000_M105P000; 20231231_AD_21_M088P000_M03P000; 20231231_AD_23_M088P000_M03P000; 20231231_AD_20_M102P000_M088P000

Coordinate System: NAD 1983 StatePlane Texas South Central FIPS 4204 Feet
Projection: Lambert Conformal Conic

Dredging Reach Extent



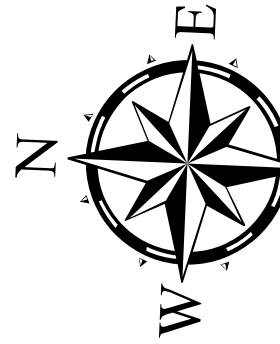
Hydrographic Survey Extent



HYDROGRAPHIC SURVEY

U.S. ARMY ENGINEER DISTRICT
CORPS OF ENGINEERS
GALVESTON, TEXAS
SABINE NECHES
Sabine Bank Channel

Station: 95+740.87 to 18+091.09=0+000



Latest Survey Collection Date: 31 December 2023

Document Page: 1 of 9

Scale: 1:3,500

Mapped by: M3AOXPAC

Additional Imagery info:

Authorized Depth: -42ft.

Side Slope Ratio: (Rise : Run)

PDF Print Date: 1/5/2024

Website Index Number: 1

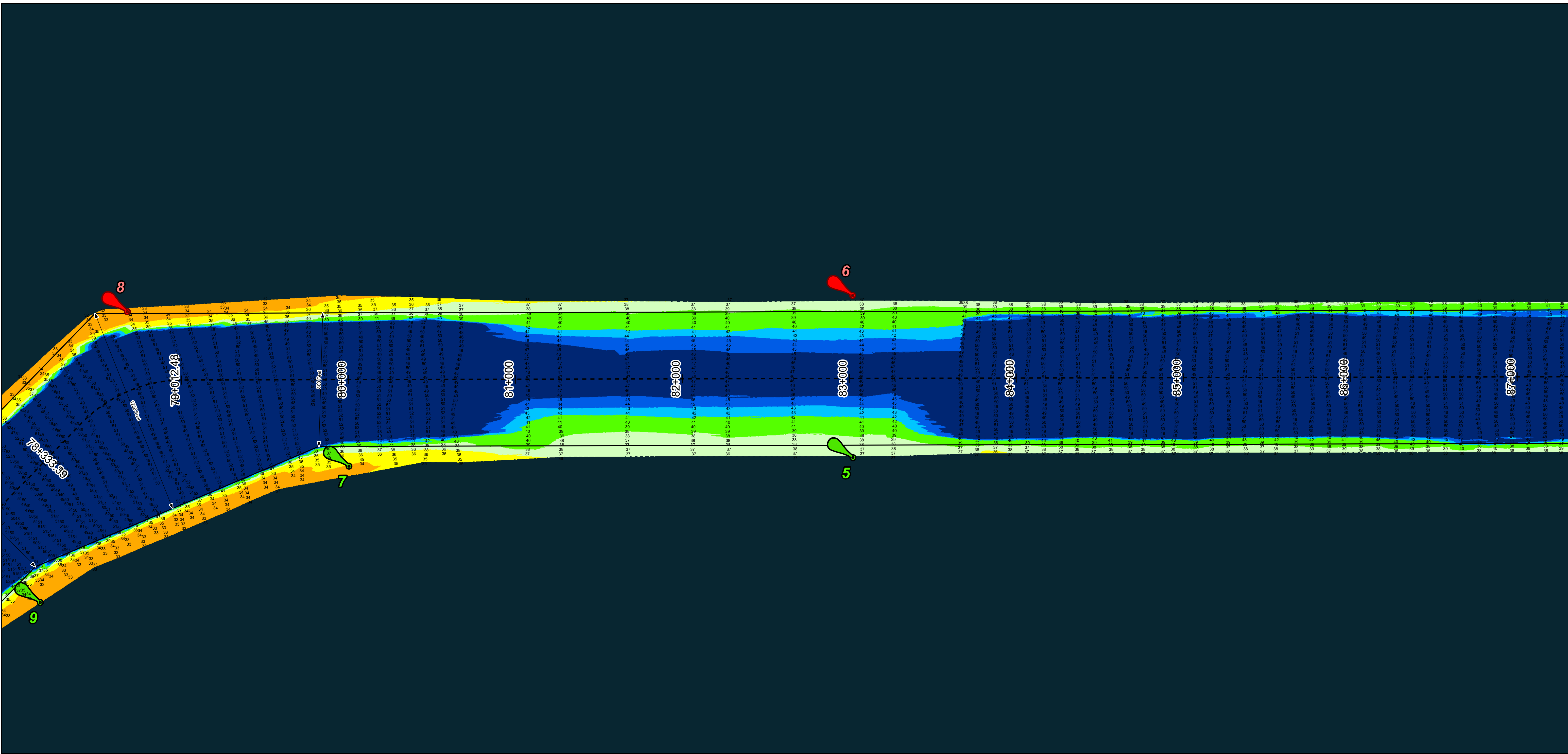
Sabine Neches Waterway: Sabine Bank Channel
--



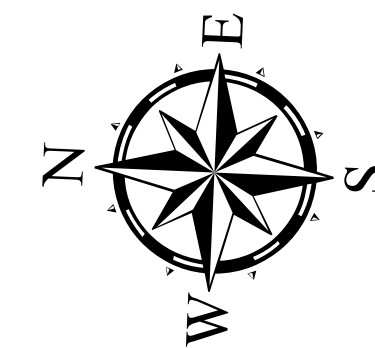
Regional Extent

SABINE NÊCHES

The map displays the Sabine Bank Channel with a red box highlighting a section from station 89+000 to 87+000. Numbered points 1 through 12 are distributed along the channel. A compass rose in the bottom right corner indicates North (N), South (S), East (E), and West (W).



Latest Survey Collection Date: 31 December 2023		Authorized Depth: -42ft.
Document Page: 2 of 9	Website Index Number: 2	Side Slope Ratio: (Rise : Run)
1:3.500		PDF Print Date: 1/5/2024
Scale:		
Mapped by: M3AOXPAC		
Additional Imagery info:		



HYDROGRAPHIC SURVEY
U.S. ARMY ENGINEER DISTRICT
CORPS OF ENGINEERS
GALVESTON, TEXAS

Station: 95+740.87 to 18+091.09=0+000
SABINE NECHES
Sabine Bank Channel

Station: 95+740.87 to 18+091.09=0+000
SABINE NECHES
 Sabine Bank Channel

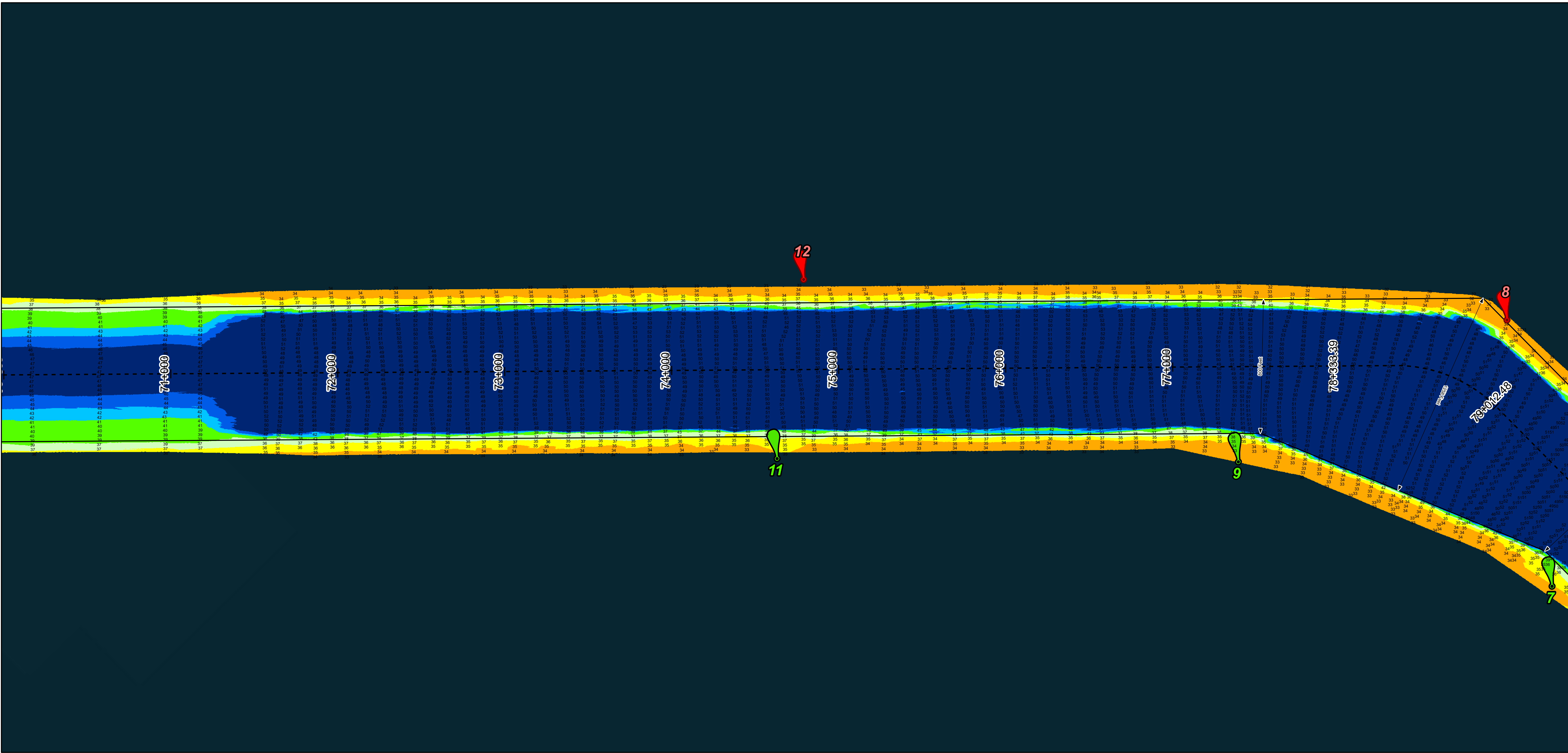
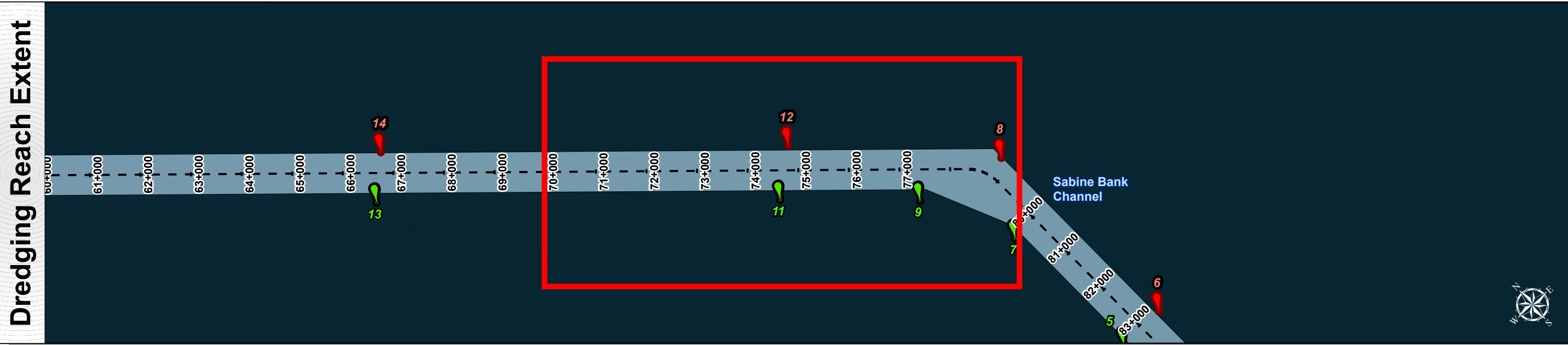
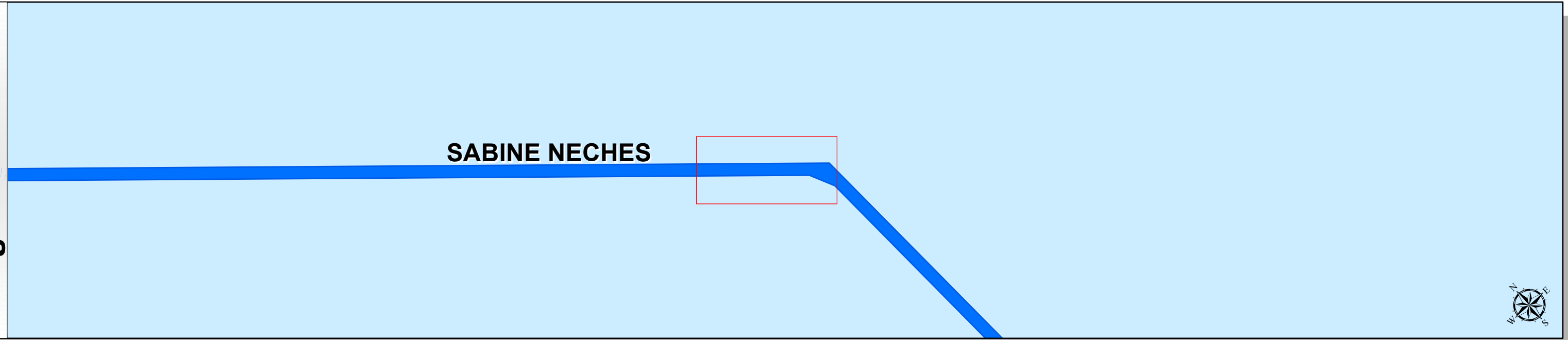
Sabine Neches Waterway: Sabine Bank Channel



U.S. Army Corps of Engineers
Galveston District



Regional Extent



Channel Features

- Channel Center Line
- Channel Toe
- Channel Station Lines
- Channel Dimensions

Aids to Navigation

- Green Side Aids
- Red Side Aids
- Lights

MLLW



NOTES:

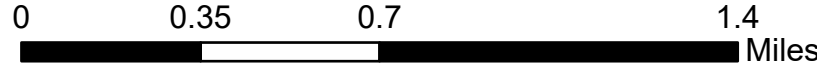
- Horizontal coordinates are referenced to Texas state plane coordinate system, south central zone nad83 us survey feet.
 - Elevations are referenced to mean lower low tide (MLLW) datum.
 - This project was designed by the Galveston District of the U.S. Army Corps of Engineers. The initials and signatures and registration designations of individuals appear on these project documents within the scope of their employment as required by 47 CFR 111.01-01102.
 - The information depicted on this survey map represents the results of surveys made on the dates indicated and can only be considered as indicating the general conditions existing at that time. These conditions are subject to rapid change due to shoaling events. A prudent mariner should not rely exclusively on the information provided here. Required by 33 or 209.325
 - For the most up to date information please check our website at: <http://www.usace.army.mil/Missions/Navigation/HydrographicSurveys/>
- Service Layer Credits: World Topographic Map, Texas Parks & Wildlife, Esri, HERE, Garmin, USGS, NGA, EPA, USDA, NPS
World Imagery: Maxar
World Ocean Base: Esri, GEBCO, Garmin, NaturalVue

Additional Combined Survey Dates and Stationing:

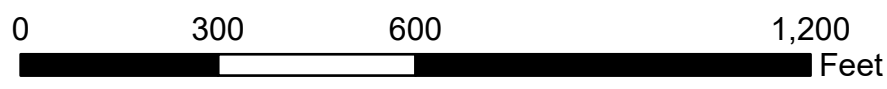
Combined survey dates 20220603, CS_19P000_17P992; 20230516, PR_M105P000_M102P000;
20230516, PR_M83P000_M88P000; 20230517, PR_M40P598_M83P000;
20231205_AD_16_M117P072_M113P000; 20231208_AD_17_M113P000_M108P000;
20231208_AD_18_M108P000_M105P000; 20231231_AD_21_M88P000_M93P000;
20231231_AD_23_M88P000_M83P000; 20231231_AD_20_M102P000_M88P000

Coordinate System: NAD 1983 StatePlane Texas South Central FIPS 4204 Feet
Projection: Lambert Conformal Conic

Dredging Reach Extent



Hydrographic Survey Extent



Latest Survey Collection Date: 31 December 2023

Authorized Depth: -42ft.

Document Page: 3 of 9

Website Index Number: 3

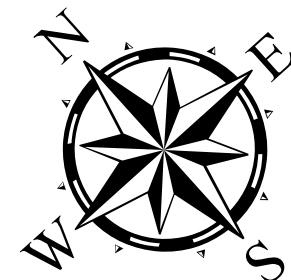
Side Slope Ratio: (Rise : Run)

Scale:

PDF Print Date: 1/5/2024

Mapped by: M3AOXPAC

Additional Imagery info:



HYDROGRAPHIC SURVEY

U.S. ARMY ENGINEER DISTRICT
CORPS OF ENGINEERS
GALVESTON, TEXAS
STATION: 95+740.87 TO 18+091.09=0+000
SABINE NECHES
Sabine Bank Channel

Sabine Neches Waterway: Sabine Bank Channel



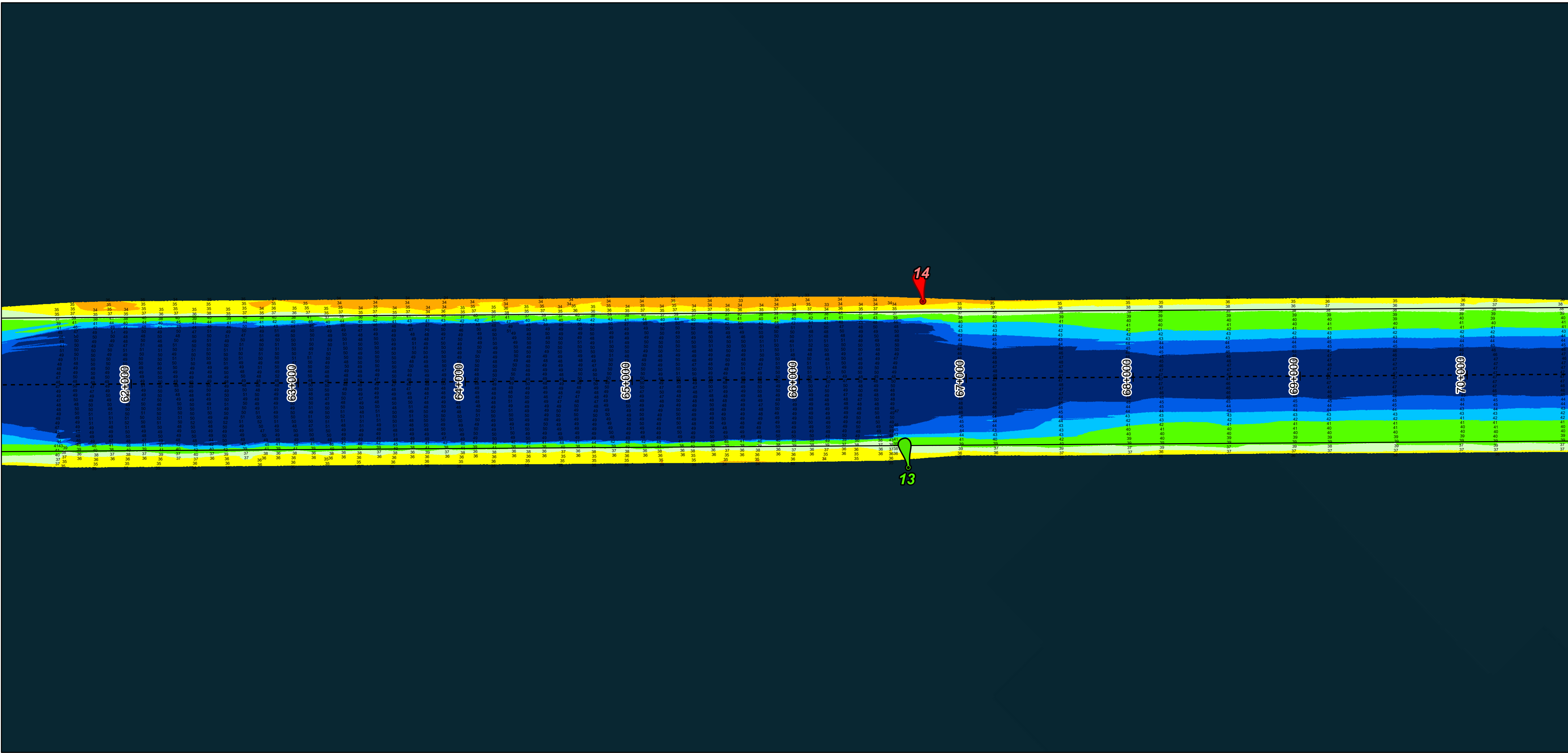
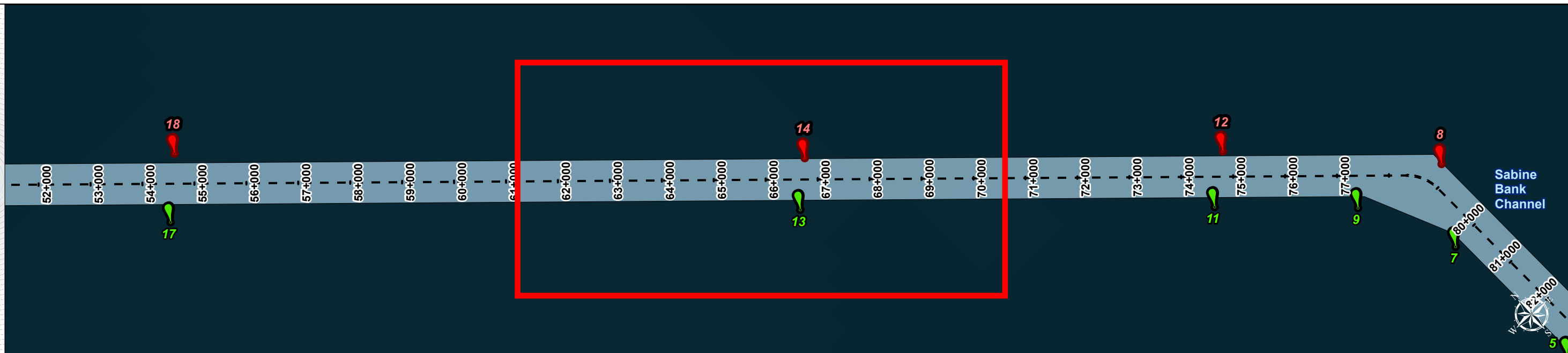
U.S. Army Corps of Engineers
Galveston District



Regional Extent

SABINE NECHES

Dredging Reach Extent



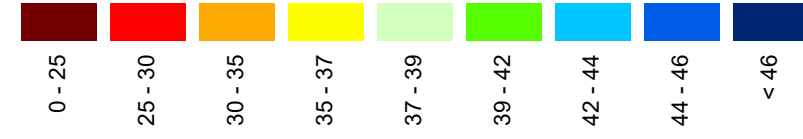
Channel Features

- Channel Center Line
- Channel Toe
- Channel Station Lines
- Channel Dimensions

Aids to Navigation

- Green Side Aids
- Red Side Aids
- Lights

MLLW



NOTES:

- Horizontal coordinates are referenced to Texas state plane coordinate system, south central zone nad83 survey feet.
- Elevations are referenced to mean lower low tide (MLLW) datum.
- This project was designed by the Galveston District of the U.S. Army Corps of Engineers. The initials and signatures and registration designations of individuals appear on these project documents within the scope of their employment as required by 47 CFR 111.05-111.052.
- The information depicted on this survey map represents the results of surveys made on the dates indicated and can only be considered as indicating the general conditions existing at that time. These conditions are subject to rapid change due to shoaling events. A prudent mariner should not rely exclusively on the information provided here. Required by 33 CFR 209.325.
- For the most up to date information please check our website at: <http://www.svg.usace.army.mil/Missions/Navigation/HydrographicSurveys/>

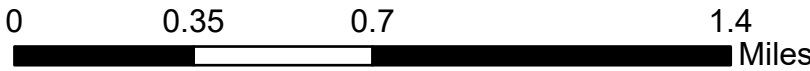
Service Layer Credits: World Topographic Map, Texas Parks & Wildlife, Esri, HERE, Garmin, USGS, NOAA, EPA, USDA, NPS, World Imagery, Maxar, World Ocean Base, Esri, GEBCO, Garmin, NaturalVue

Additional Combined Survey Dates and Stationing:

Combined survey dates 20220603_CS_19P000_17P992; 20230516_PR_M105P000_M102P000; 20230516_PR_M93P000_M88P000; 20230517_PR_M40P598_M83P000; 20231205_AD_16_M117P072_M113P000; 20231208_AD_17_M113P000_M108P000; 20231208_AD_18_M108P000_M105P000; 20231231_AD_21_M98P000_M93P000; 20231231_AD_23_M88P000_M83P000; 20231231_AD_20_M102P000_M98P000

Coordinate System: NAD 1983 StatePlane Texas South Central FIPS 4204 Feet
Projection: Lambert Conformal Conic

Dredging Reach Extent



Hydrographic Survey Extent



Latest Survey Collection Date: 31 December 2023

Authorized Depth: -42ft.

Document Page: 4 of 9

Website Index Number: 4

Side Slope Ratio: (Rise : Run)

Scale:

1:3,500

PDF Print Date: 1/5/2024

Mapped by: M3AOXPAC

Additional Imagery info:



HYDROGRAPHIC SURVEY

U.S. ARMY ENGINEER DISTRICT

CORPS OF ENGINEERS

GALVESTON, TEXAS

SABINE NECHES

Sabine Bank Channel

Station: 95+740.87 to 18+091.09=0+000

Sabine Neches Waterway: Sabine Bank Channel



U.S. Army Corps of Engineers
Galveston District



Regional Extent

SABINE NECHES

Dredging Reach Extent

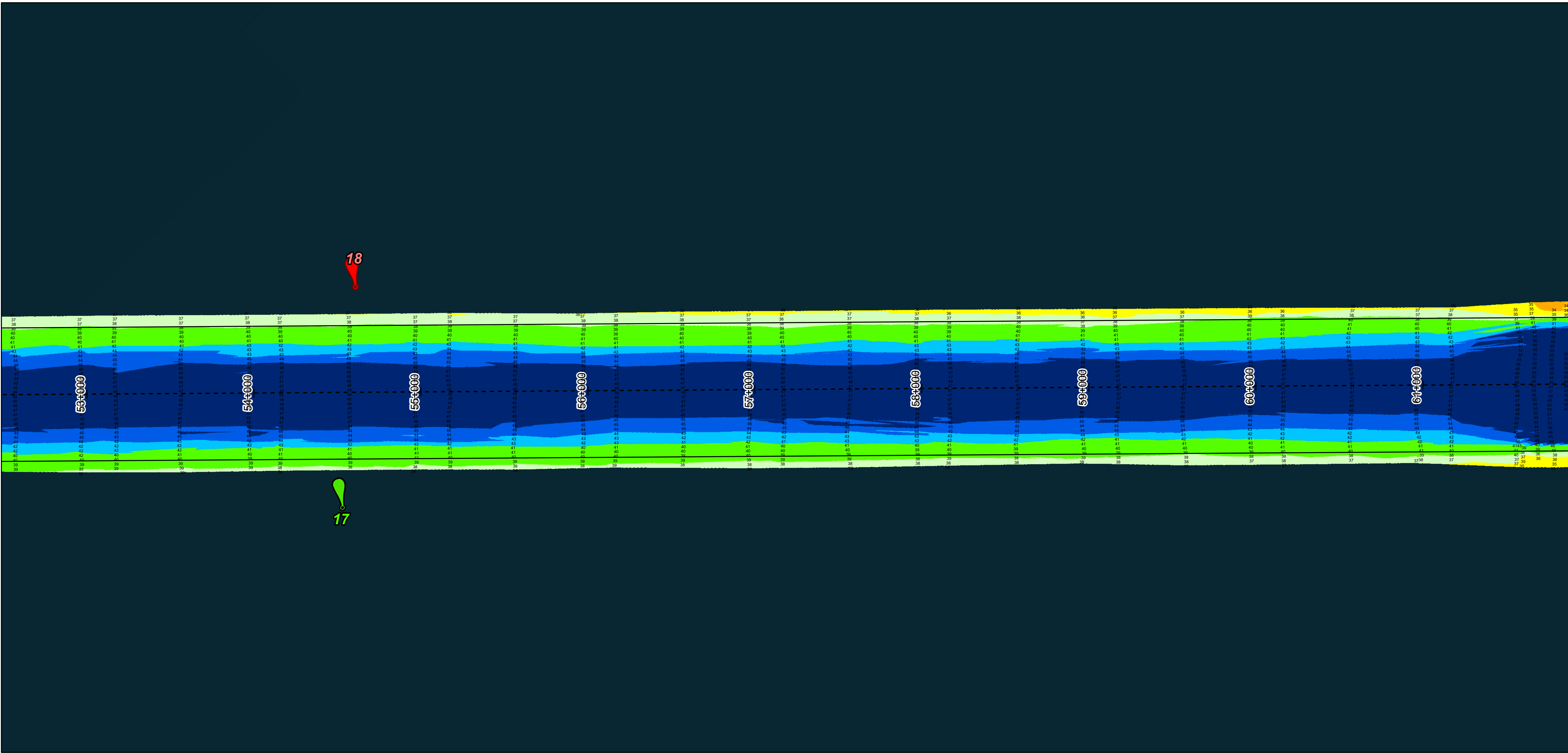
18

17

14

13

Sabine Bank Channel



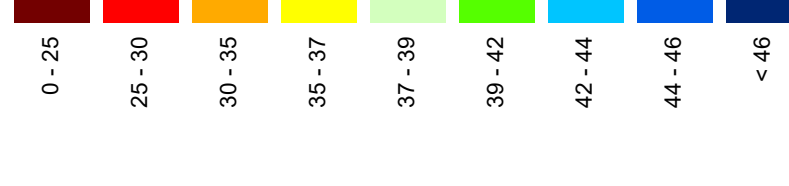
Channel Features

- Channel Center Line
- Channel Toe
- Channel Station Lines
- Channel Dimensions

Aids to Navigation

- Green Side Aids
- Red Side Aids
- Lights

MLLW



NOTES:

- Horizontal coordinates are referenced to Texas state plane coordinate system, south central zone nad83 us survey feet.
 - Elevations are referenced to mean lower low tide (MLLW) datum.
 - This project was designed by the Galveston District of the U.S. Army Corps of Engineers. The initials and signatures and registration designations of individuals appear on these project documents within the scope of their employment as required by 47 CFR 111.115-111.122.
 - The information depicted on this survey map represents the results of surveys made on the dates indicated and can only be considered as indicating the general conditions existing at that time. These conditions are subject to rapid change due to shoaling events. A prudent mariner should not rely exclusively on the information provided here. Required by 33 CFR 209.325.
 - For the most up to date information please check our website at: <http://www.svg.usace.army.mil/Missions/Navigation/HydrographicSurveys/>
- Service Layer Credits: World Topographic Map: Texas Parks & Wildlife, Esri, HERE, Garmin, USGS, NGA, EPA, USDA, NPS
World Imagery: Maxar
World Ocean Base: Esri, GEBCO, Garmin, NaturalVue

Additional Combined Survey Dates and Stationing:

Combined survey dates 20220603_CS_19P000_17P992; 20230516_PR_M105P000_M102P000; 20230516_PR_M93P000_M88P000; 20230517_PR_M40P598_M83P000; 20231205_AD_16_M117P072_M113P000; 20231208_AD_17_M113P000_M108P000; 20231208_AD_18_M108P000_M105P000; 20231231_AD_21_M98P000_M93P000; 20231231_AD_23_M88P000_M83P000; 20231231_AD_20_M102P000_M98P000

Coordinate System: NAD 1983 StatePlane Texas South Central FIPS 4204 Feet
Projection: Lambert Conformal Conic

Dredging Reach Extent

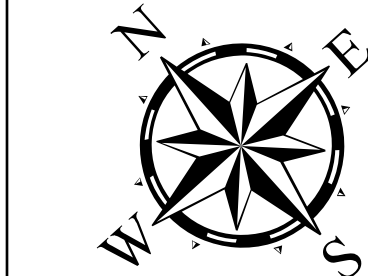


Hydrographic Survey Extent



HYDROGRAPHIC SURVEY
U.S. ARMY ENGINEER DISTRICT
CORPS OF ENGINEERS
GALVESTON, TEXAS

Station: 95+740.87 to 18+091.09=0+000
SABINE NECHES
Sabine Bank Channel



Latest Survey Collection Date: 31 December 2023

Document Page: 5 of 9

Website Index Number: 5

Authorized Depth: -42ft.

Side Slope Ratio: (Rise : Run)

PDF Print Date: 1/5/2024

Scale: 1"=3,500'

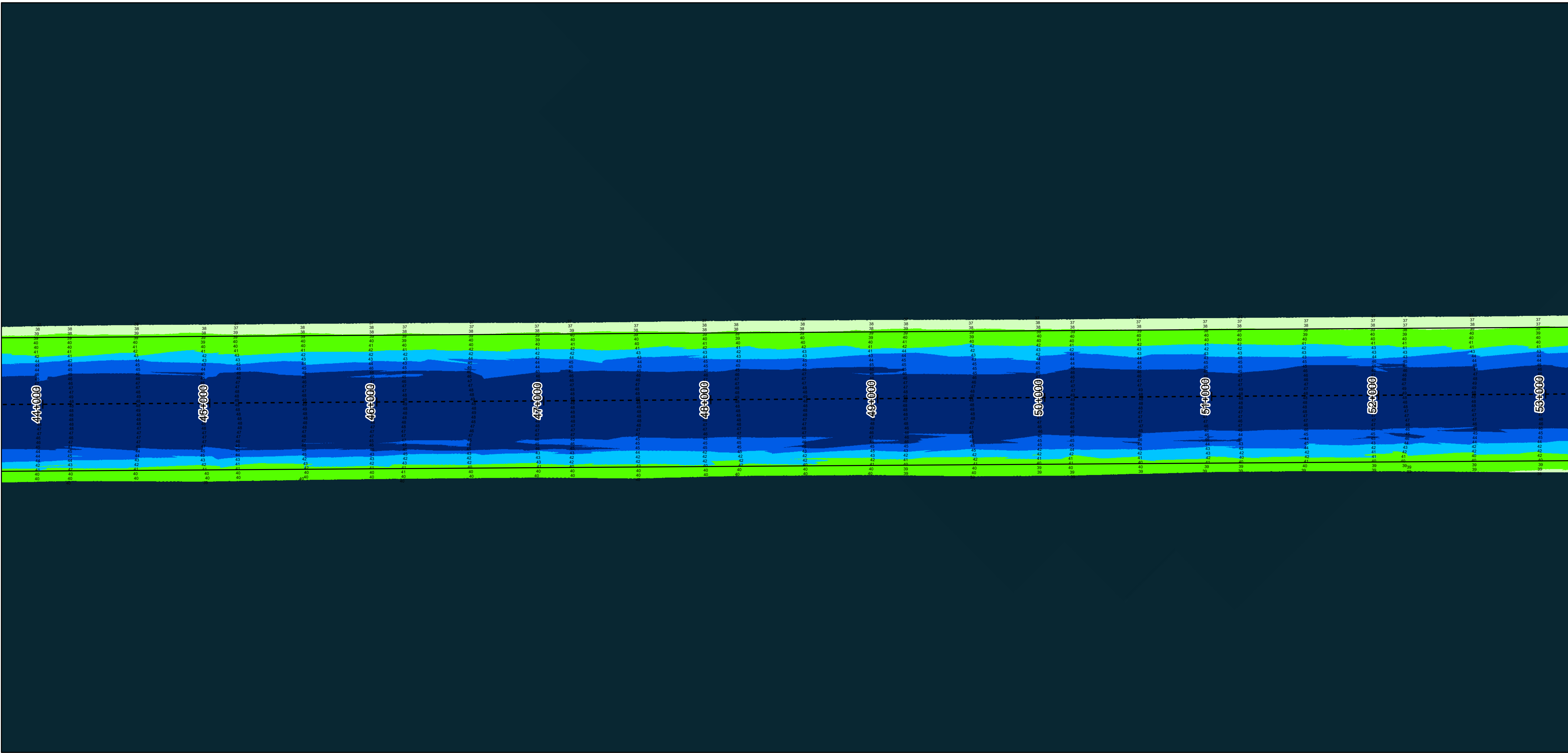
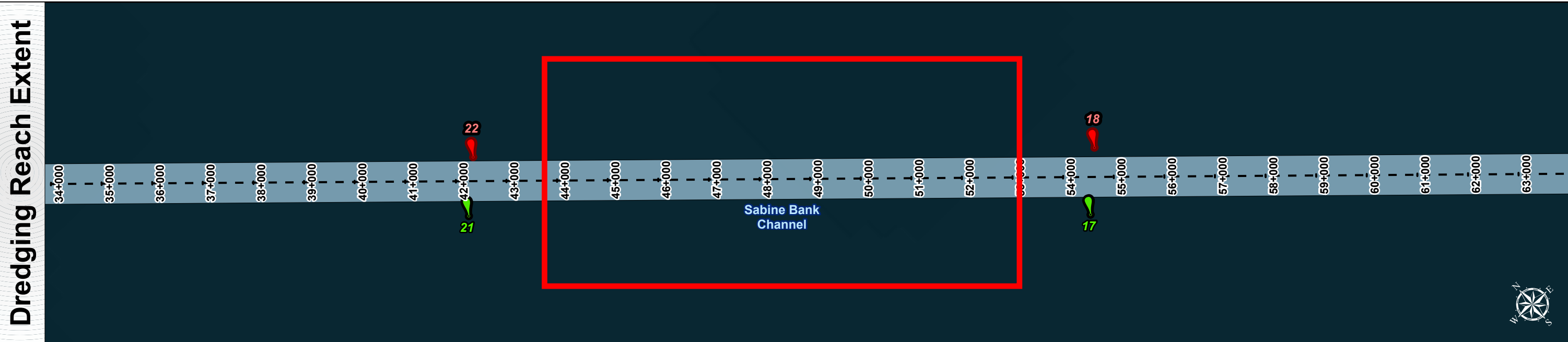
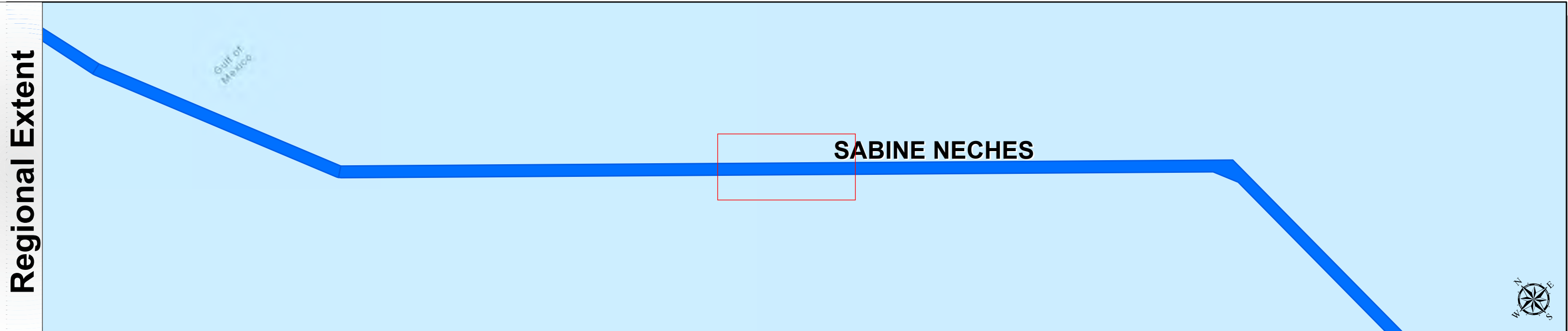
Mapped by: M3AOXPAC

Additional Imagery info:

Sabine Neches Waterway: Sabine Bank Channel



U.S. Army Corps of Engineers
Galveston District



Channel Features

- Channel Center Line
- Channel Toe
- Channel Station Lines
- Channel Dimensions

Aids to Navigation

- Green Side Aids
- Red Side Aids
- Lights

MLLW

0 - 25
25 - 30
30 - 35
35 - 37
37 - 39
39 - 42
42 - 44
44 - 46
< 46

NOTES:
1. Horizontal coordinates are referenced to Texas state plane coordinate system, south central zone nad83 us survey feet.
2. Elevations are referenced to mean lower low tide (MLLW) datum.
3. This project was designed by the Galveston District of the U.S. Army Corps of Engineers. The initials and signatures and registration designations of individuals appear on these project documents within the scope of their employment as required by 47 CFR 111.11-111.12.
4. The information depicted on this survey map represents the results of surveys made on the dates indicated and can only be considered as indicating the general conditions existing at that time. These conditions are subject to rapid change due to shoaling events. A prudent mariner should not rely exclusively on the information provided here. Required by 33 CFR 209.325.
5. For the most up to date information please check our website at: <http://www.svg.usace.army.mil/Missions/Navigation/HydrographicSurveys/>

Service Layer Credits: World Topographic Map: Texas Parks & Wildlife, Esri, HERE, Garmin, USGS, NGA, EPA, USDA, NPS
World Imagery: Maxar
World Ocean Base: Esri, GEBCO, Garmin, NaturalVue

Additional Combined Survey Dates and Stationing:

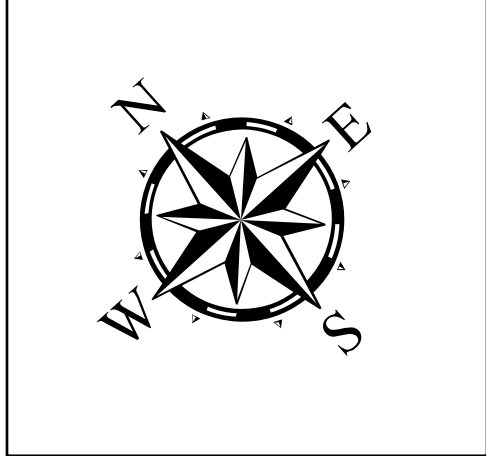
Combined survey dates 20220603_CS_19P000_17P992; 20230516_PR_M105P000_M102P000; 20230516_PR_M93P000_M88P000; 20230517_PR_M40P598_M83P000; 20231205_AD_16_M117P072_M113P000; 20231208_AD_17_M113P000_M108P000; 20231208_AD_18_M108P000_M105P000; 20231231_AD_21_M98P000_M93P000; 20231231_AD_23_M88P000_M83P000; 20231231_AD_20_M102P000_M98P000

Coordinate System: NAD 1983 StatePlane Texas South Central FIPS 4204 Feet
Projection: Lambert Conformal Conic

Dredging Reach Extent
0 0.35 0.7 1.4 Miles

Hydrographic Survey Extent
0 300 600 1,200 Feet

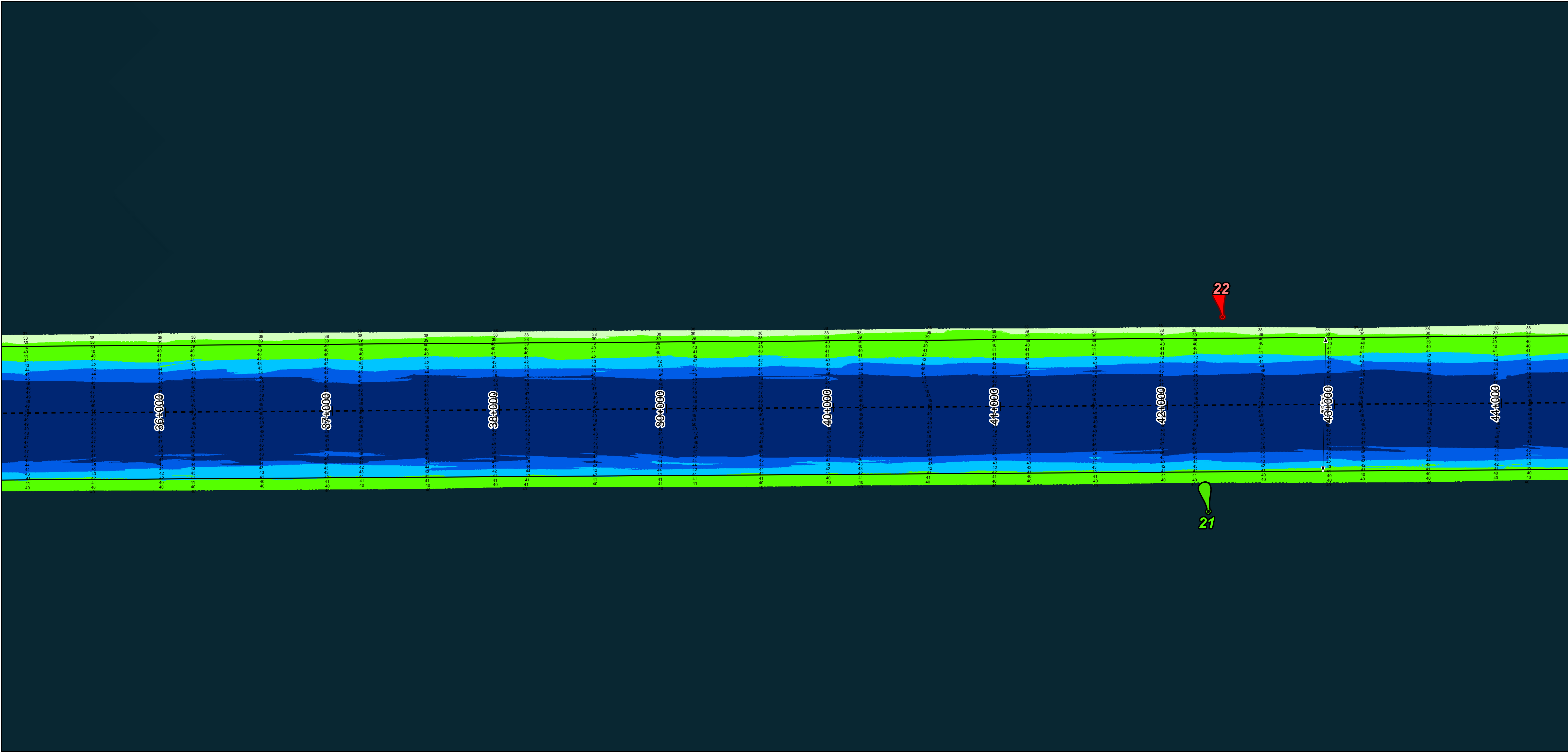
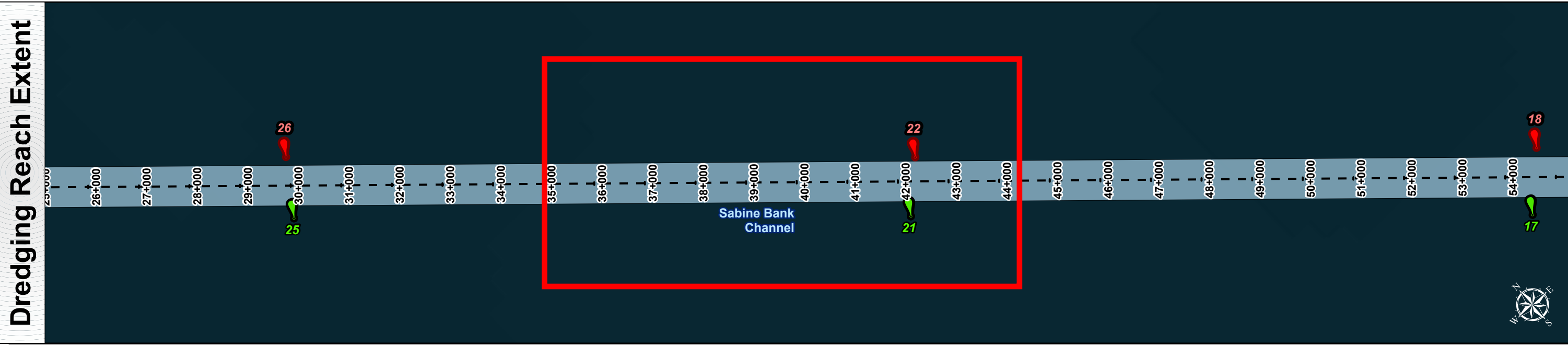
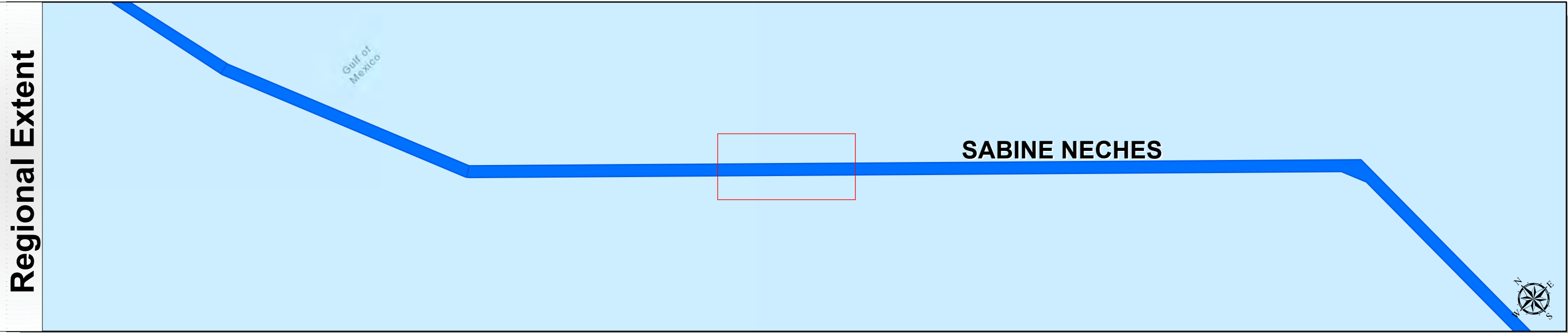
Latest Survey Collection Date: 31 December 2023		Authorized Depth: -42ft.	
Document Page: 6 of 9	Website Index Number: 6	Side Slope Ratio: (Rise : Run)	
Scale: 1"=3,500'		PDF Print Date: 1/5/2024	
Mapped by: M3AOXPAC			
Additional Imagery info:			



HYDROGRAPHIC SURVEY
U.S. ARMY ENGINEER DISTRICT
CORPS OF ENGINEERS
GALVESTON, TEXAS

Station: 95+740.87 to 18+091.09=0+000
SABINE NECHES
Sabine Bank Channel

Sabine Neches Waterway: Sabine Bank Channel



Channel Features

- Channel Center Line
- Channel Toe
- Channel Station Lines
- Channel Dimensions

Aids to Navigation

- Green Side Aids
- Red Side Aids
- Lights

MLLW

0 - 25	25 - 30	30 - 35	35 - 37	37 - 39	39 - 42	42 - 44	44 - 46	< 46
Red	Orange	Yellow	Light Green	Green	Dark Green	Blue	Dark Blue	Black

NOTES:
1. Horizontal coordinates are referenced to Texas state plane coordinate system, south central zone nad83 us survey feet.
2. Elevations are referenced to mean lower low tide (MLLW) datum.
3. This project was designed by the Galveston District of the U.S. Army Corps of Engineers. The initials and signatures and registration designations of individuals appear on these project documents within the scope of their employment as required by 47CFR 117.1-117.12.
4. The information depicted on this survey map represents the results of surveys made on the dates indicated and can only be considered as indicating the general conditions existing at that time. These conditions are subject to rapid change due to shoaling events. A prudent mariner should not rely exclusively on the information provided here. Required by 33 CFR 209.325
5. For the most up to date information please check our website at: <http://www.svg.usace.army.mil/Missions/Navigation/HydrographicSurveys/>
Service Layer Credits: World Topographic Map: Texas Parks & Wildlife, Esri, HERE, Garmin, USGS, NOAA, EPA, USDA, NPS
World Imagery: Maxar
World Ocean Base: Esri, GEBCO, Garmin, NaturalVue

Additional Combined Survey Dates and Stationing:
Combined survey dates 20220603_CS_19P000_17P992; 20230516_PR_M105P000_M102P000; 20230516_PR_M93P000_M88P000; 20230517_PR_M40P598_M83P000; 20231205_AD_16_M117P072_M113P000; 20231208_AD_17_M113P000_M108P000; 20231208_AD_18_M108P000_M105P000; 20231231_AD_21_M98P000_M93P000; 20231231_AD_23_M88P000_M83P000; 20231231_AD_20_M102P000_M98P000

Coordinate System: NAD 1983 StatePlane Texas South Central FIPS 4204 Feet
Projection: Lambert Conformal Conic

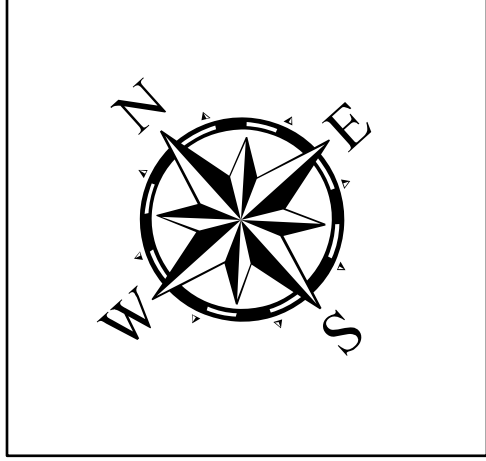
Dredging Reach Extent

0 0.35 0.7 1.4 Miles

Hydrographic Survey Extent

0 300 600 1,200 Feet

Latest Survey Collection Date: 31 December 2023		Authorized Depth: -42ft.	
Document Page: 7 of 9	Website Index Number: 7	Side Slope Ratio: (Rise : Run)	
Scale: 1"=3,500'		PDF Print Date: 1/5/2024	
Mapped by: M3AOXPAC			
Additional Imagery info:			

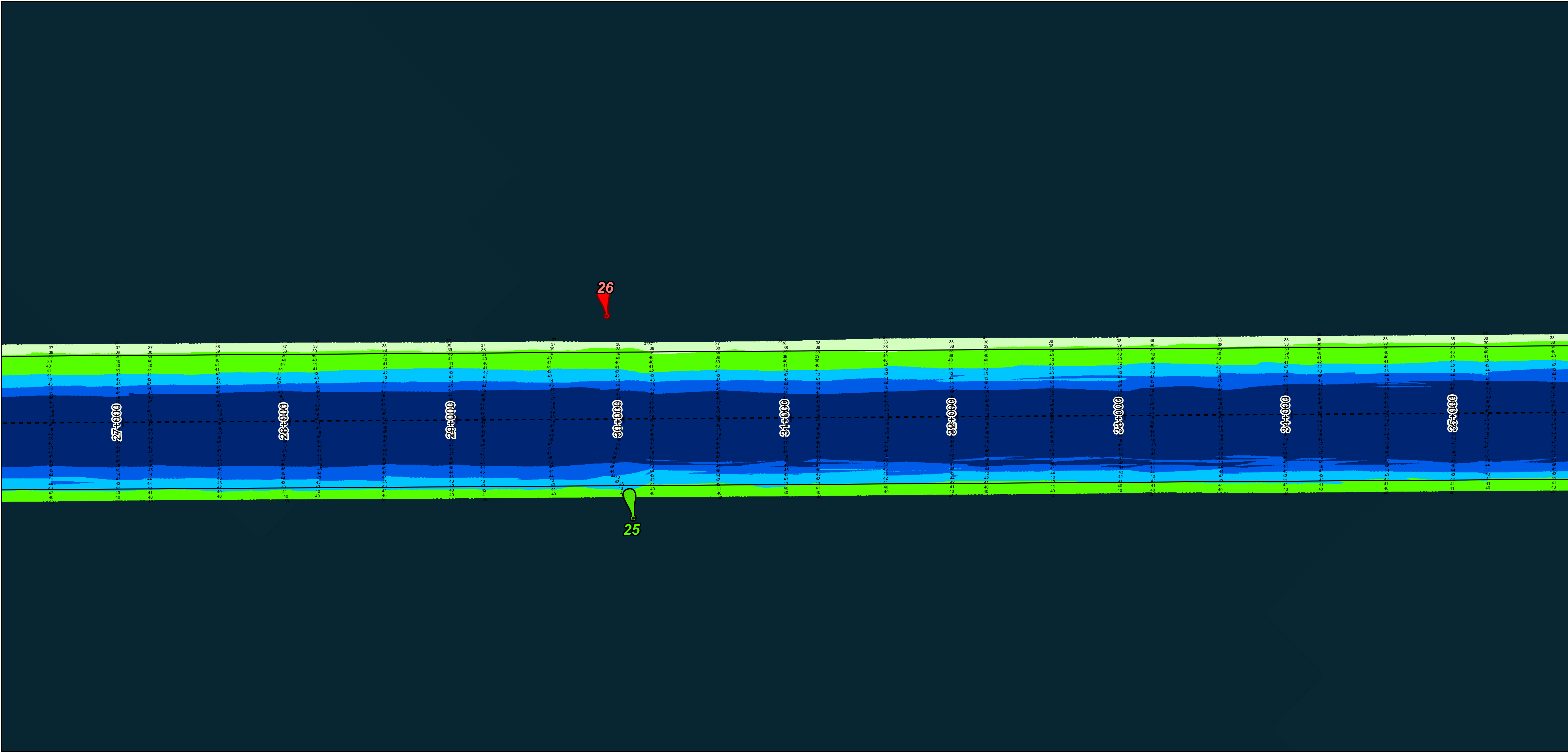
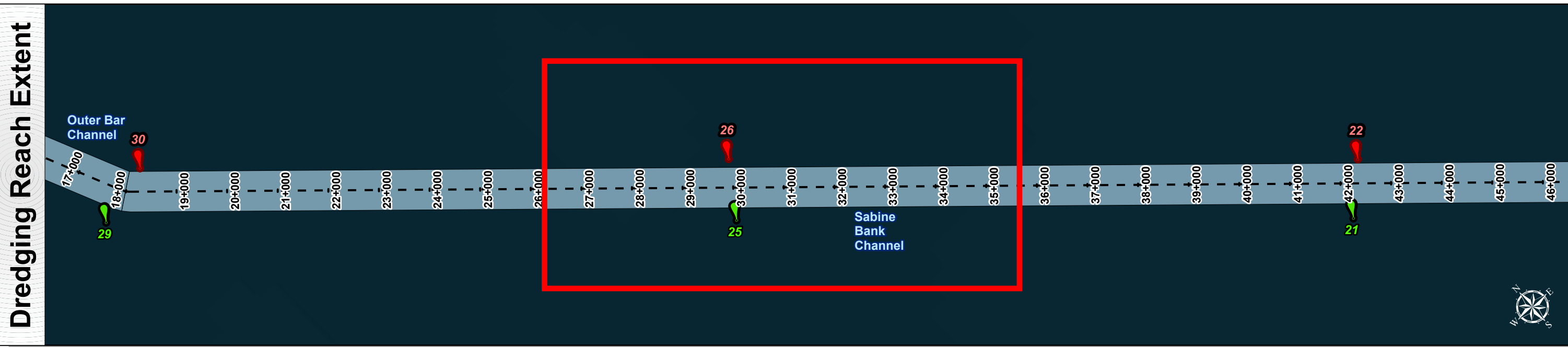
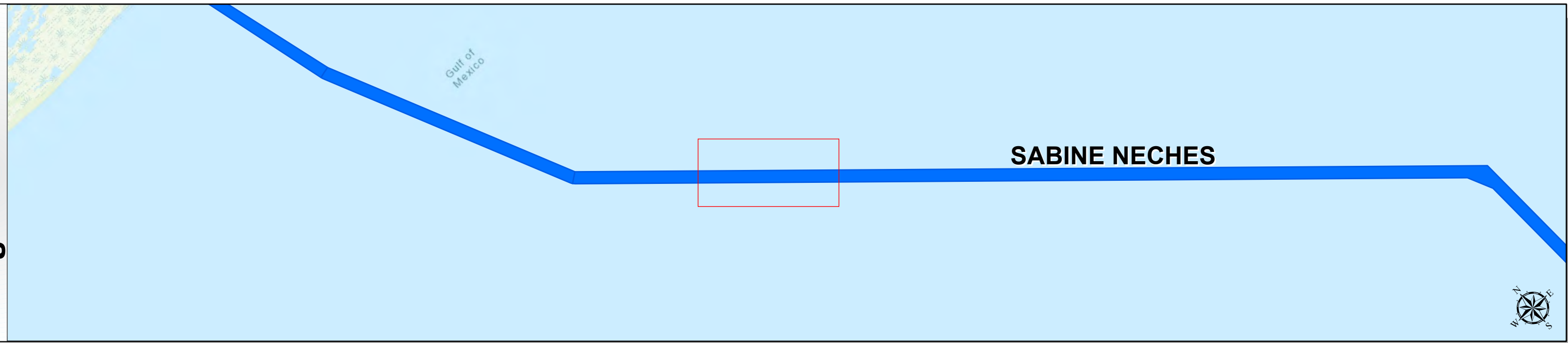


HYDROGRAPHIC SURVEY
U.S. ARMY ENGINEER DISTRICT
CORPS OF ENGINEERS
GALVESTON, TEXAS

Station: 95+740.87 to 18+091.09=0+000
SABINE NECHES
Sabine Bank Channel

Sabine Neches Waterway: Sabine Bank Channel

Regional Extent



Channel Features

- Channel Center Line
- Channel Toe
- Channel Station Lines
- Channel Dimensions

Aids to Navigation

- Green Side Aids
- Red Side Aids
- Lights

MLLW

0 - 25	25 - 30	30 - 35	35 - 37	37 - 39	39 - 42	42 - 44	44 - 46	< 46
Dark Red	Red	Orange	Yellow	Light Green	Green	Blue	Dark Blue	Black

NOTES:
1. Horizontal coordinates are referenced to Texas state plane coordinate system, south central zone nad83 us survey feet.
2. Elevations are referenced to mean lower low tide (MLLW) datum.
3. This project was designed by the Galveston District of the U.S. Army Corps of Engineers. The initials and signatures and registration designations of individuals appear on these project documents within the scope of their employment as required by 47CFR 117.11-117.12.
4. The information depicted on this survey map represents the results of surveys made on the dates indicated and can only be considered as indicating the general conditions existing at that time. These conditions are subject to rapid change due to shoaling events. A prudent mariner should not rely exclusively on the information provided here. Required by 33 CFR 209.325.
5. For the most up to date information please check our website at: <http://www.svg.usace.army.mil/Missions/Navigation/HydrographicSurveys/>

Service Layer Credits: World Topographic Map: Texas Parks & Wildlife, Esri, HERE, Garmin, USGS, NOAA, EPA, USDA, NPS
World Imagery: Maxar
World Ocean Base: Esri, GEBCO, Garmin, NaturalVue

Additional Combined Survey Dates and Stationing:

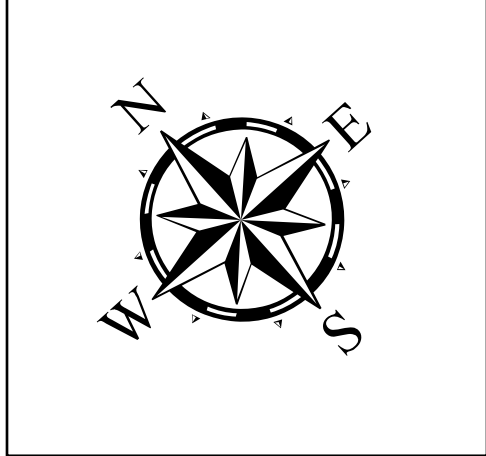
Combined survey dates 20220603_CS_19P000_17P992; 20230516_PR_M105P000_M102P000; 20230516_PR_M93P000_M88P000; 20230517_PR_M40P598_M83P000; 20231205_AD_16_M117P072_M113P000; 20231208_AD_17_M113P000_M108P000; 20231208_AD_18_M108P000_M105P000; 20231231_AD_21_M98P000_M93P000; 20231231_AD_23_M88P000_M83P000; 20231231_AD_20_M102P000_M98P000

Coordinate System: NAD 1983 StatePlane Texas South Central FIPS 4204 Feet
Projection: Lambert Conformal Conic

Dredging Reach Extent
0 0.35 0.7 1.4 Miles

Hydrographic Survey Extent
0 300 600 1,200 Feet

Latest Survey Collection Date: 31 December 2023		Authorized Depth: -42ft.	
Document Page: 8 of 9	Website Index Number: 8	Side Slope Ratio: (Rise : Run)	
Scale: 1"=3,500		PDF Print Date: 1/5/2024	
Mapped by: M3AOXPAC			
Additional Imagery info:			



HYDROGRAPHIC SURVEY
U.S. ARMY ENGINEER DISTRICT
CORPS OF ENGINEERS
GALVESTON, TEXAS

Station: 95+740.87 to 18+091.09=0+000
SABINE NECHES
Sabine Bank Channel

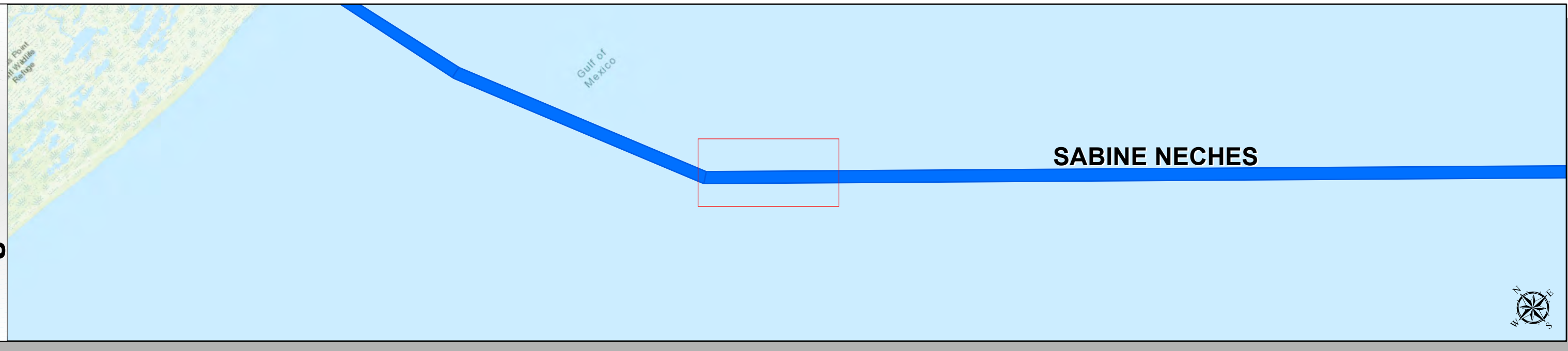
Sabine Neches Waterway: Sabine Bank Channel



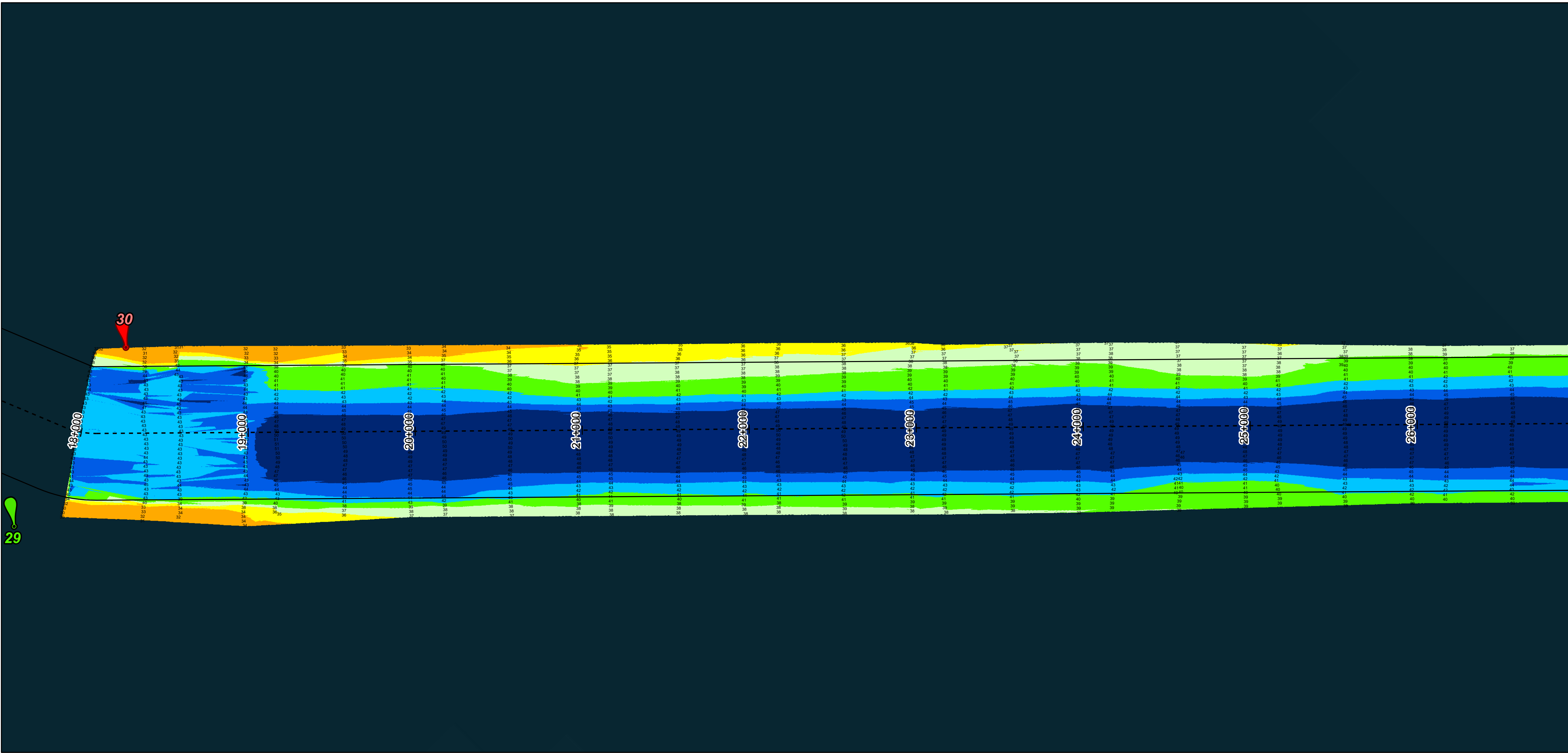
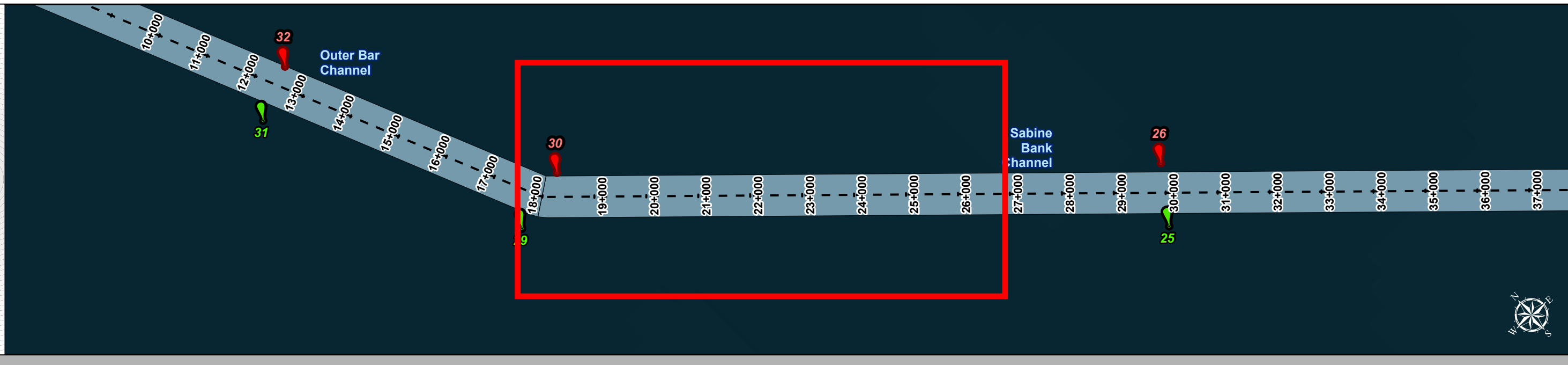
U.S. Army Corps of Engineers
Galveston District



Regional Extent



Dredging Reach Extent



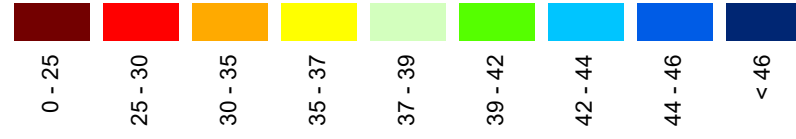
Channel Features

- Channel Center Line
- Channel Toe
- Channel Station Lines
- Channel Dimensions

Aids to Navigation

- Green Side Aids
- Red Side Aids
- Lights

MLLW



NOTES:

- Horizontal coordinates are referenced to Texas state plane coordinate system, south central zone nad83 us survey feet.
 - Elevations are referenced to mean lower low tide (MLLW) datum.
 - This project was designed by the Galveston District of the U.S. Army Corps of Engineers. The initials and signatures and registration designations of individuals appear on these project documents within the scope of their employment as required by 47 CFR 111.115-111.122.
 - The information depicted on this survey map represents the results of surveys made on the dates indicated and can only be considered as indicating the general conditions existing at that time. These conditions are subject to rapid change due to shoaling events. A prudent mariner should not rely exclusively on the information provided here. Required by 33 CFR 209.325.
 - For the most up to date information please check our website at: <http://www.svg.usace.army.mil/Missions/Navigation/HydrographicSurveys/>
- Service Layer Credits: World Topographic Map: Texas Parks & Wildlife, Esri, HERE, Garmin, USGS, NOAA, EPA, USDA, NPS
World Imagery: Maxar
World Ocean Base: Esri, GEBCO, Garmin, NaturalVue

Additional Combined Survey Dates and Stationing:

Combined survey dates 20220603_CS_19P000_17P992; 20230516_PR_M105P000_M102P000;
20230516_PR_M93P000_M88P000; 20230517_PR_M40P598_M83P000;
20231205_AD_16_M117P072_M113P000; 20231208_AD_17_M113P000_M108P000;
20231208_AD_18_M108P000_M105P000; 20231231_AD_21_M88P000_M93P000;
20231231_AD_23_M88P000_M83P000; 20231231_AD_20_M102P000_M88P000

Coordinate System: NAD 1983 StatePlane Texas South Central FIPS 4204 Feet
Projection: Lambert Conformal Conic

Dredging Reach Extent



Hydrographic Survey Extent



HYDROGRAPHIC SURVEY

U.S. ARMY ENGINEER DISTRICT
CORPS OF ENGINEERS
GALVESTON, TEXAS

SABINE NECHES

Sabine Bank Channel

Station: 95+740.87 to 18+091.09=0+000

Latest Survey Collection Date: 31 December 2023

Authorized Depth: -42ft.

Document Page: 9 of 9

Website Index Number: 9

Side Slope Ratio: (Rise : Run)

Scale:

1:3,500

PDF Print Date: 1/5/2024

Mapped by: M3AOXPAC

Additional Imagery info:

