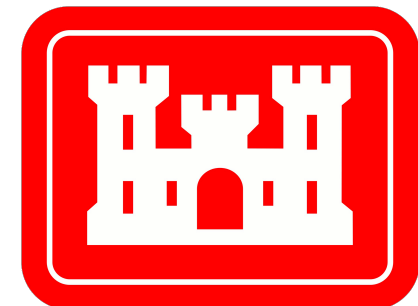


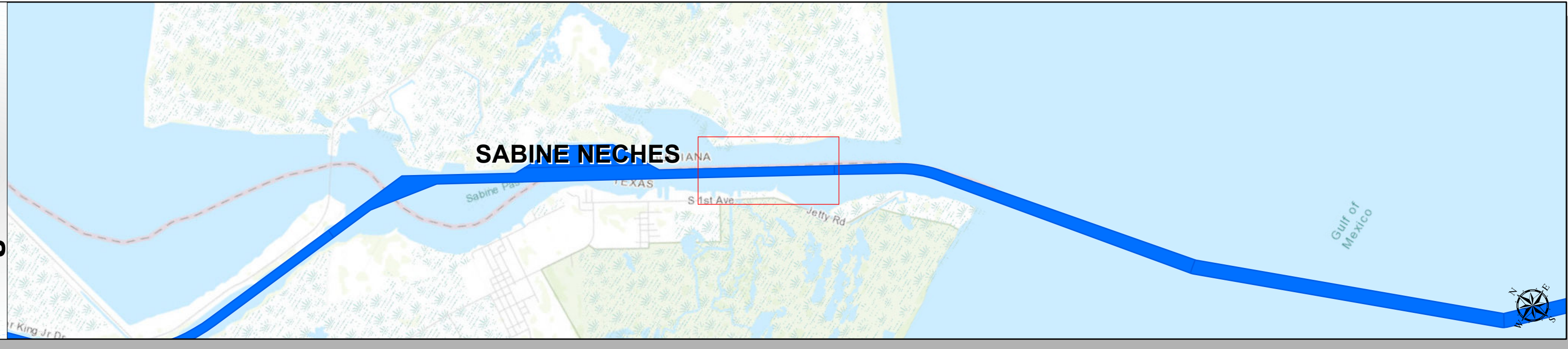
Sabine Neches Waterway: Pass Channel



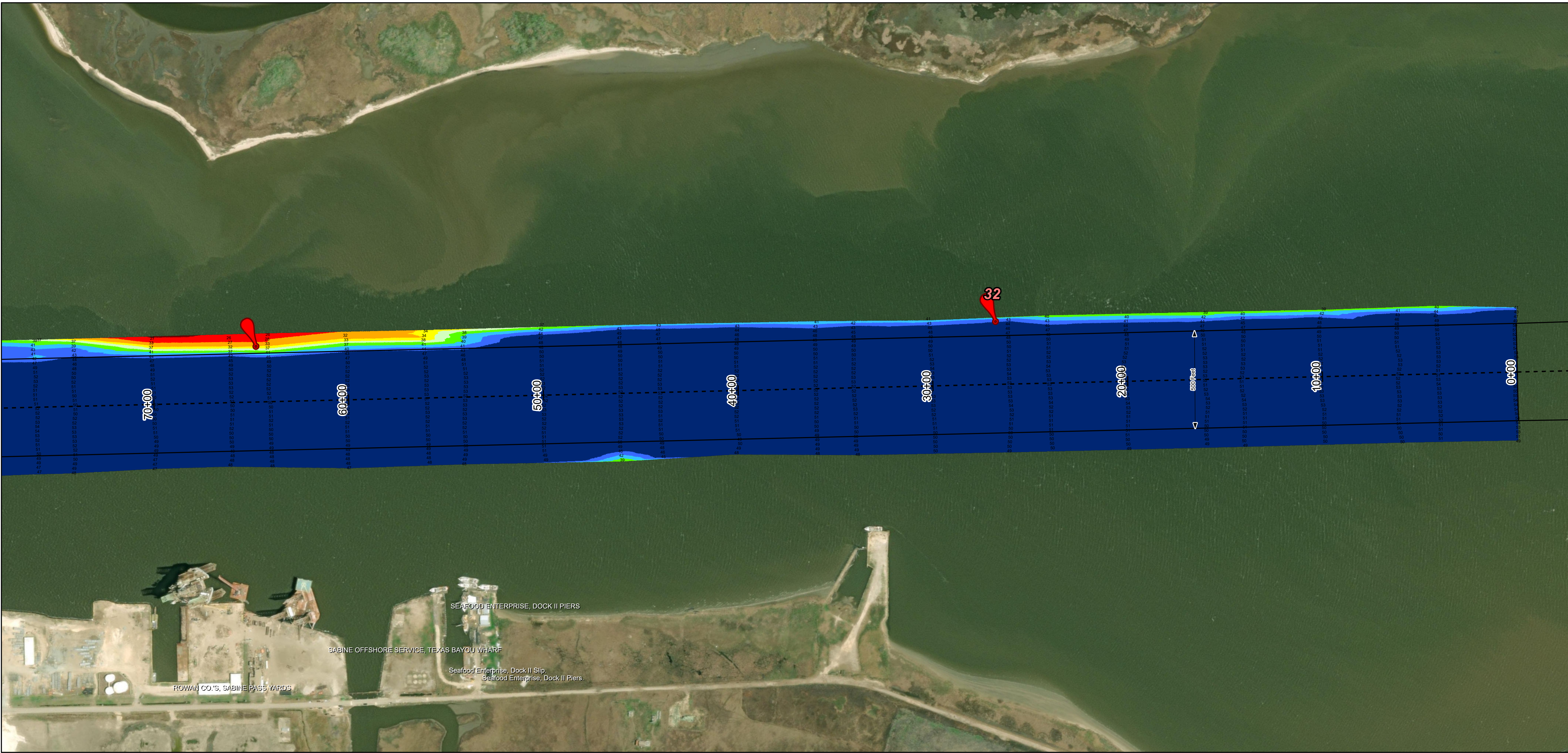
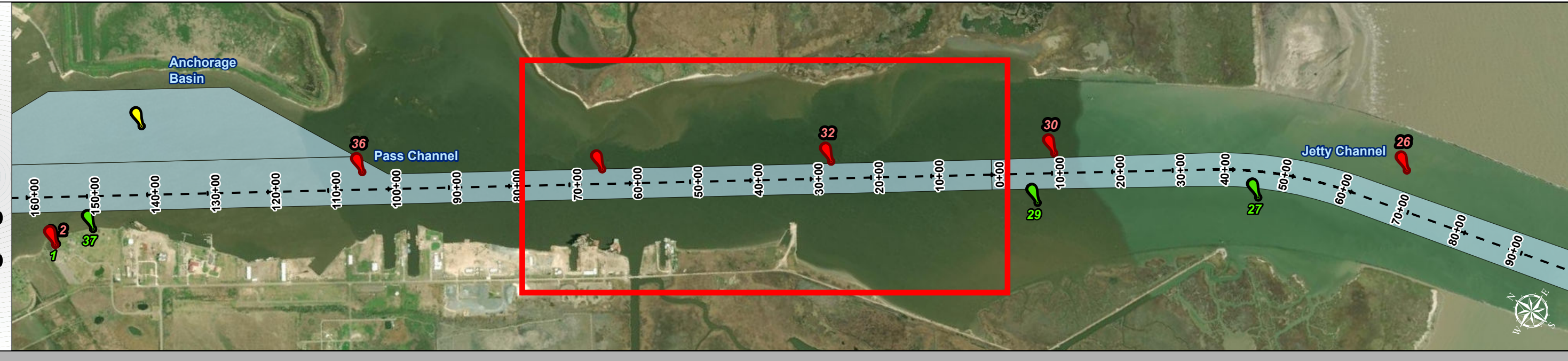
U.S. Army Corps of Engineers
Galveston District



Regional Extent



Dredging Reach Extent



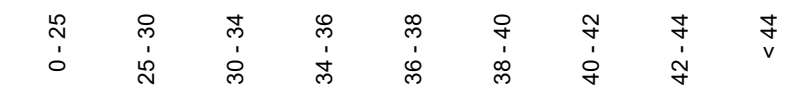
Channel Features

- Channel Center Line
- Channel Toe
- Channel Station Lines
- Channel Dimensions

Aids to Navigation

- Green Side Aids
- Red Side Aids
- Lights

MLLW



NOTES:

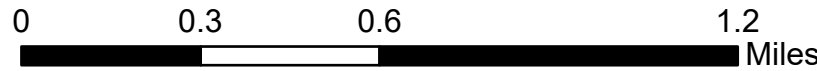
- Horizontal coordinates are referenced to Texas state plane coordinate system, south central zone nad83 us survey feet.
 - Elevations are referenced to mean lower low tide (MLLW) datum.
 - This project was designed by the Galveston District of the U.S. Army Corps of Engineers. The initials and signatures of individuals appear on these project documents within the scope of their employment as required by 47 CFR 111.11-111.12.
 - The information depicted on this survey map represents the results of surveys made on the dates indicated and can only be considered as indicating the general conditions existing at that time. These conditions are subject to rapid change due to shoaling events. A prudent mariner should not rely exclusively on the information provided here. Required by 33 CFR 209.325.
 - For the most up to date information please check our website at: <http://www.svg.usace.army.mil/Missions/Navigation/HydrographicSurveys/>
- Service Layer Credits: World Topographic Map: Texas Parks & Wildlife, Esri, HERE, Garmin, INCREMENT P, USGS, METINASA, NGA, EPA, USDA
World Ocean Base: Esri, GEBCO, DeLorme, NaturalVue
World Imagery: Maxar

Additional Combined Survey Dates and Stationing:

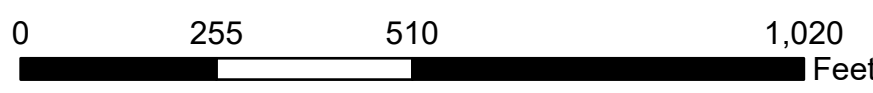
Combined survey dates 20230509_PR_0P00_170P00; 20230511_PR_171P00_296P25

Coordinate System: NAD 1983 StatePlane Texas South Central FIPS 4204 Feet
Projection: Lambert Conformal Conic

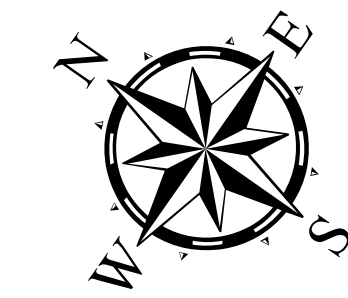
Dredging Reach Extent



Hydrographic Survey Extent



Latest Survey Collection Date: 11 May 2023		Authorized Depth: -40ft.
Document Page: 1 of 4	Website Index Number: 15	Side Slope Ratio: (Rise : Run)
Scale: 1:3,000		PDF Print Date: 5/15/2023
Mapped by: M3AOXPAC		
Additional Imagery info:		

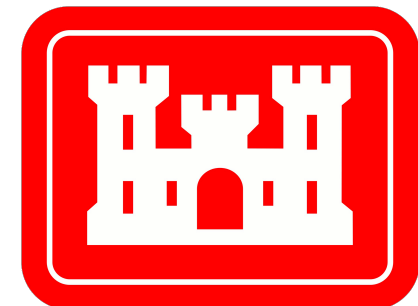


HYDROGRAPHIC SURVEY

U.S. ARMY ENGINEER DISTRICT
CORPS OF ENGINEERS
GALVESTON, TEXAS

Station: 0+00 to 296+24.44=0+00
SABINE NECHES
Pass Channel

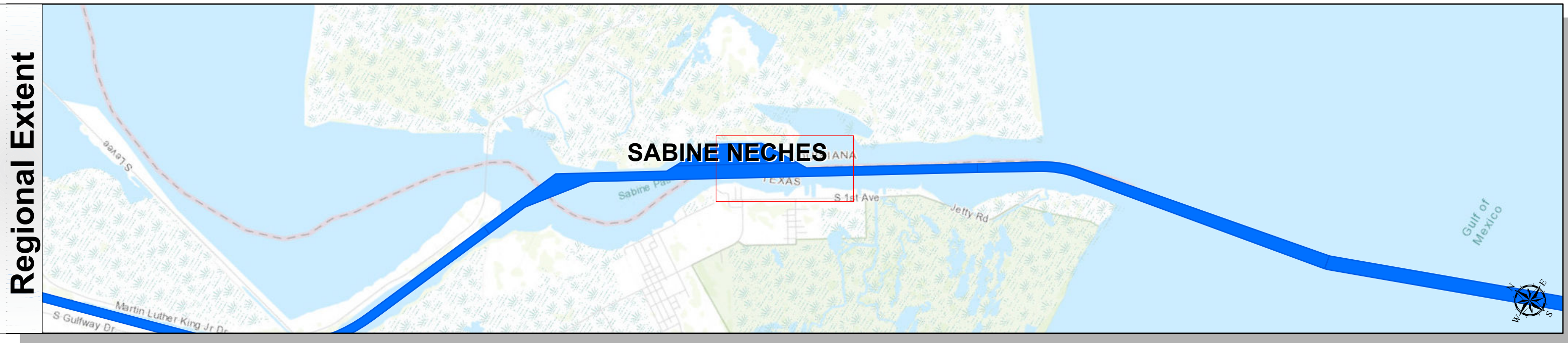
Sabine Neches Waterway: Pass Channel



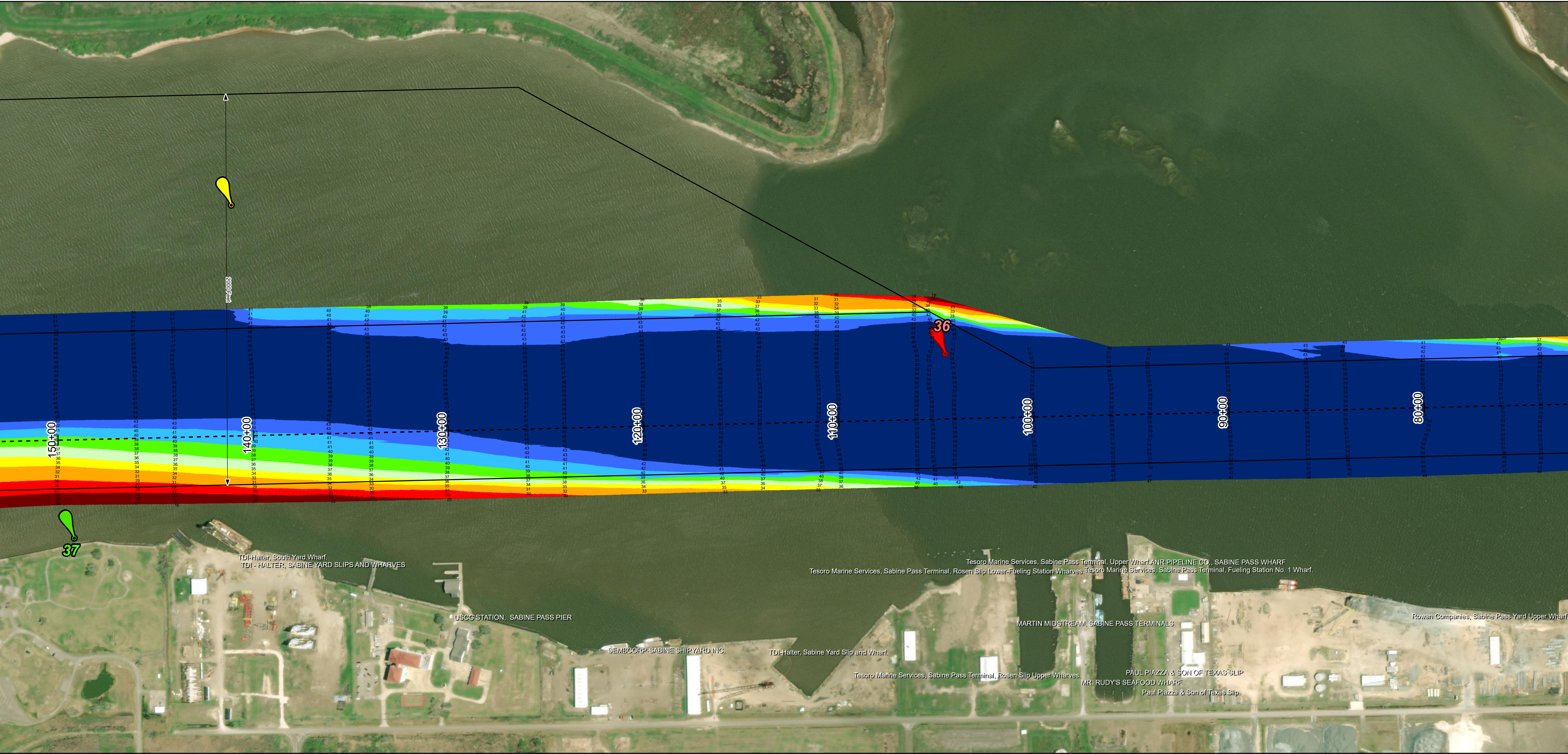
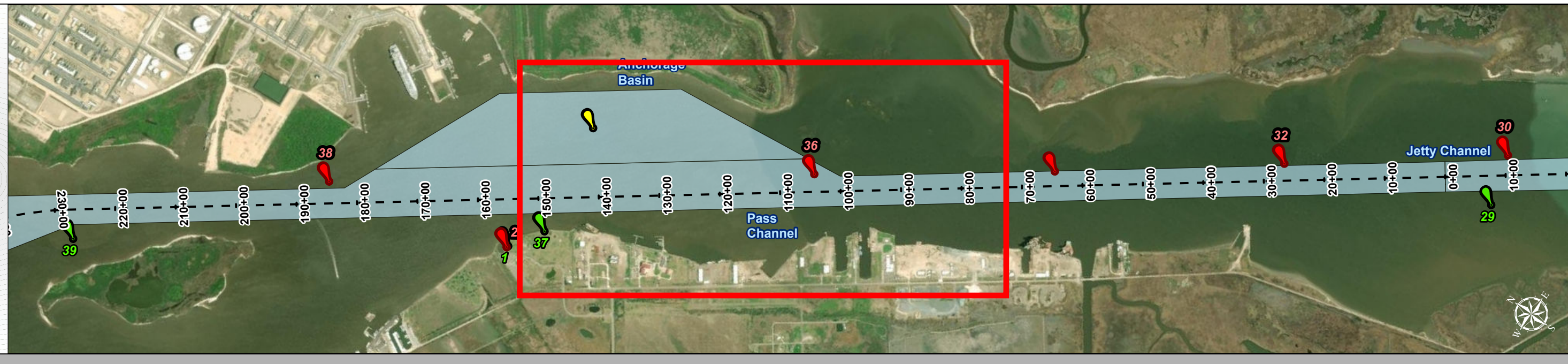
U.S. Army Corps of Engineers
Galveston District



Regional Extent



Dredging Reach Extent



Channel Features

- Channel Center Line
- Channel Toe
- Channel Station Lines
- Channel Dimensions

Aids to Navigation

- Green Side Aids
- Red Side Aids
- Lights

MLLW



NOTES:

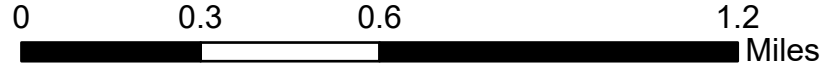
- Horizontal coordinates are referenced to Texas state plane coordinate system, south central zone nad83 U.S. survey feet.
 - Elevations are referenced to mean lower low tide (MLLW) datum.
 - This project was designed by the Galveston District of the U.S. Army Corps of Engineers. The initials and signatures and registration designations of individuals appear on these project documents within the scope of their employment as required by 47 CFR 111.115-111.122.
 - The information depicted on this survey map represents the results of surveys made on the dates indicated and can only be considered as indicating the general conditions existing at that time. These conditions are subject to rapid change due to shoaling events. A prudent mariner should not rely exclusively on the information provided here. Required by 33 CFR 209.325.
 - For the most up to date information please check our website at: <http://www.svg.usace.army.mil/Missions/Navigation/HydrographicSurveys/>
- Service Layer Credits: World Topographic Map, Texas Parks & Wildlife, Esri, HERE, Garmin, INCREMENT P, USGS, METNUSA, NGA, EPA, USDA, World Ocean Base, Esri, GEBCO, Delorme, NaturalVue, World Imagery, Maxar

Additional Combined Survey Dates and Stationing:

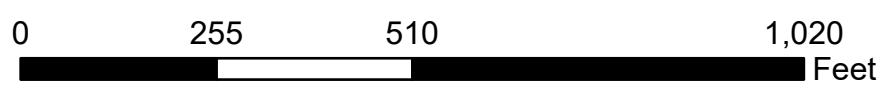
Combined survey dates 20230509_PR_0P00_170P00; 20230511_PR_171P00_296P25

Coordinate System: NAD 1983 StatePlane Texas South Central FIPS 4204 Feet
Projection: Lambert Conformal Conic

Dredging Reach Extent



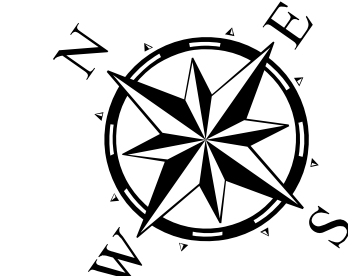
Hydrographic Survey Extent



HYDROGRAPHIC SURVEY

U.S. ARMY ENGINEER DISTRICT
CORPS OF ENGINEERS
GALVESTON, TEXAS

Station: 0+00 to 296+24.44=0+00
SABINE NECHES
Pass Channel



Latest Survey Collection Date: 11 May 2023

Document Page: 2 of 4

Website Index Number: 16

Authorized Depth: -40ft.

Side Slope Ratio: (Rise : Run)

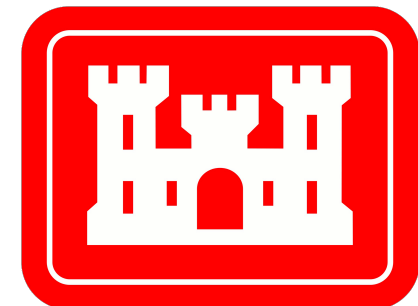
PDF Print Date: 5/15/2023

Scale: 1:3,000

Mapped by: M3AOXPAC

Additional Imagery info:

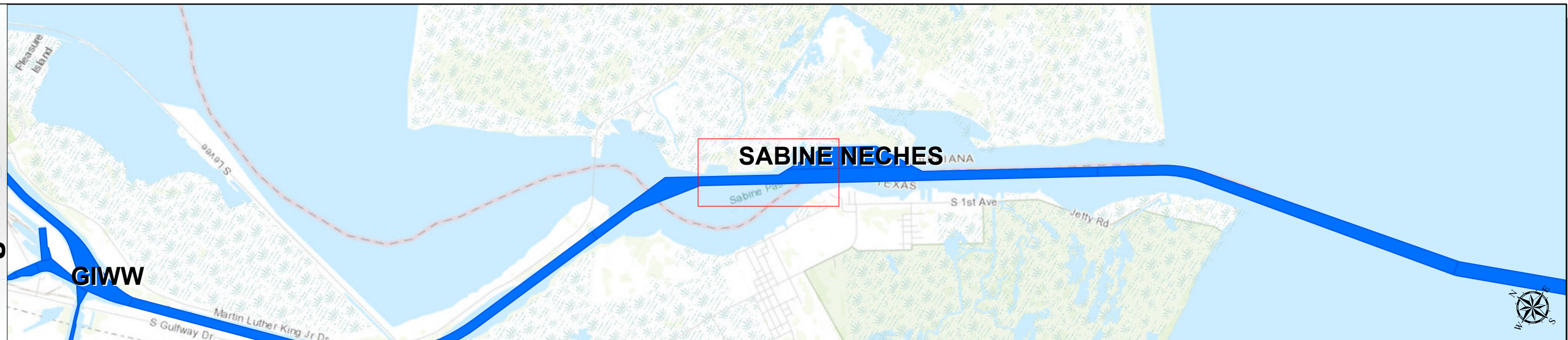
Sabine Neches Waterway: Pass Channel



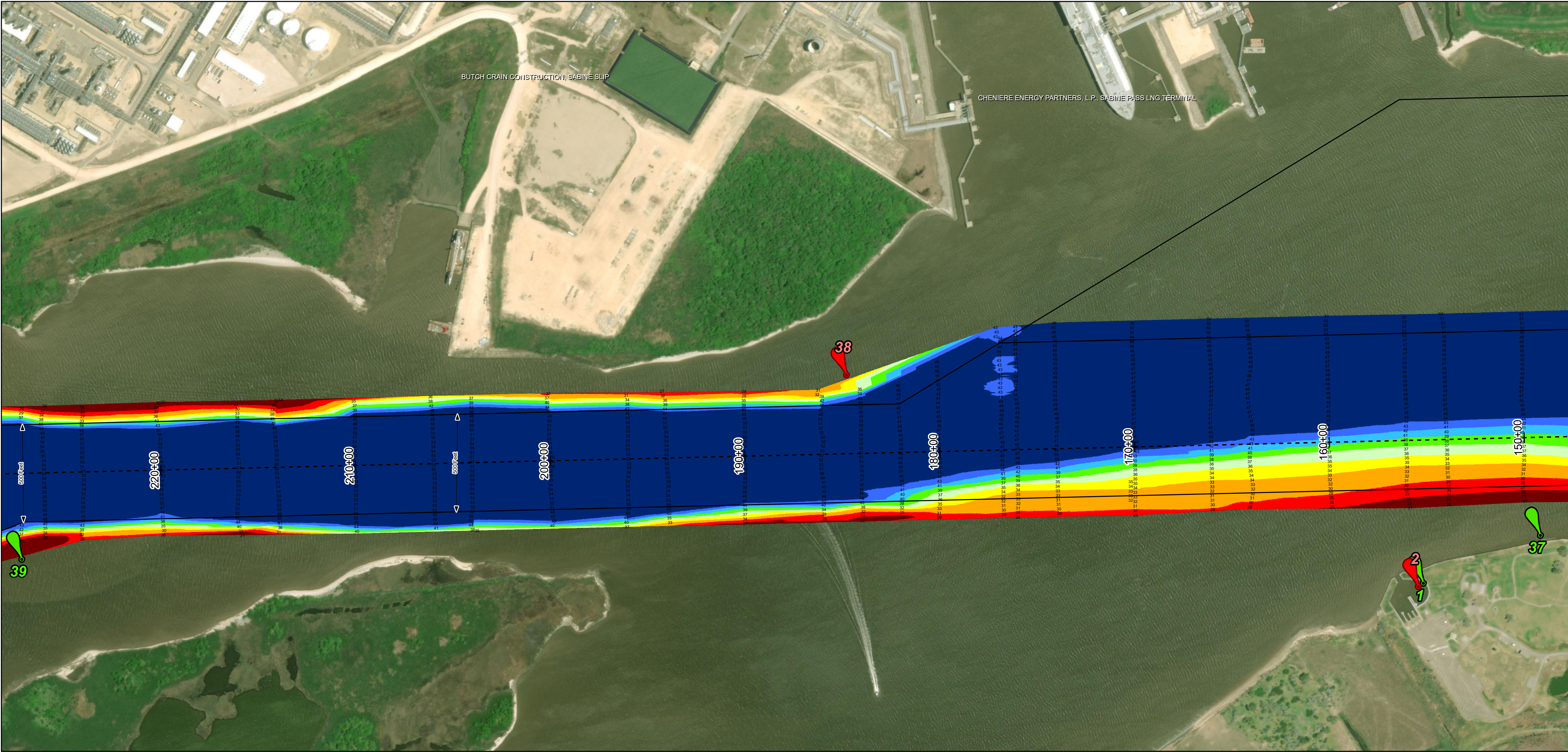
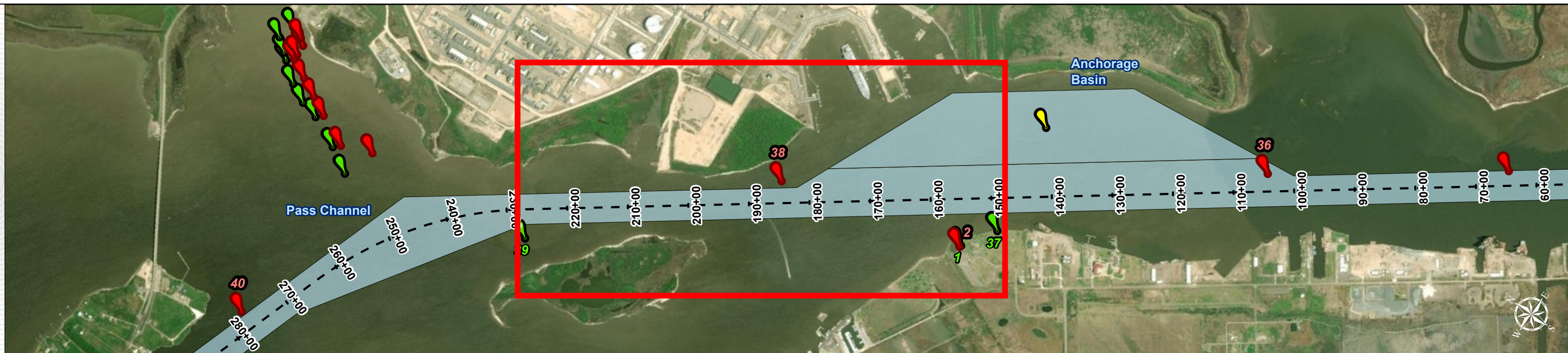
U.S. Army Corps of Engineers
Galveston District



Regional Extent



Dredging Reach Extent



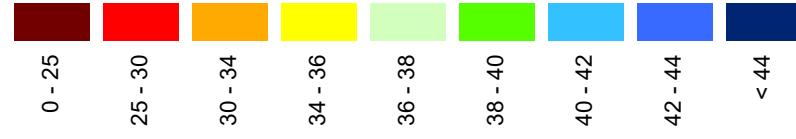
Channel Features

- Channel Center Line
- Channel Toe
- Channel Station Lines
- Channel Dimensions

Aids to Navigation

- Green Side Aids
- Red Side Aids
- Lights

MLLW



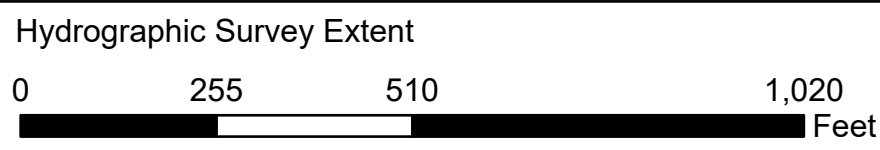
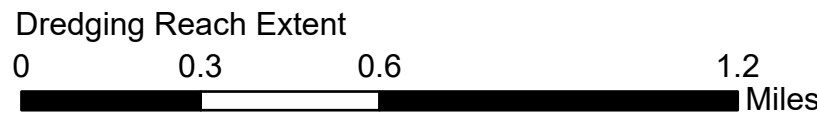
NOTES:

- Horizontal coordinates are referenced to Texas state plane coordinate system, south central zone nad83 us survey feet.
 - Elevations are referenced to mean lower low tide (MLLW) datum.
 - This project was designed by the Galveston District of the U.S. Army Corps of Engineers. The initials and signatures and registration designations of individuals appear on these project documents within the scope of their employment as required by 47 CFR 111.11-111.12.
 - The information depicted on this survey map represents the results of surveys made on the dates indicated and can only be considered as indicating the general conditions existing at that time. These conditions are subject to rapid change due to shoaling events. A prudent mariner should not rely exclusively on the information provided here. Required by 33 CFR 209.325
 - For the most up to date information please check our website at: <http://www.svg.usace.army.mil/Missions/Navigation/HydrographicSurveys/>
- Service Layer Credits: World Topographic Map: Texas Parks & Wildlife, Esri, HERE, Garmin, INCREMENT P, USGS, METINASA, NGA, EPA, USDA
World Ocean Base: Esri, GEBCO, DeLorme, NaturalVue
World Imagery: Maxar

Additional Combined Survey Dates and Stationing:

Combined survey dates 20230509_PR_0P00_170P00; 20230511_PR_171P00_296P25

Coordinate System: NAD 1983 StatePlane Texas South Central FIPS 4204 Feet
Projection: Lambert Conformal Conic



Latest Survey Collection Date: 11 May 2023

Document Page: 3 of 4

Website Index Number: 17

Scale: 1:3,000

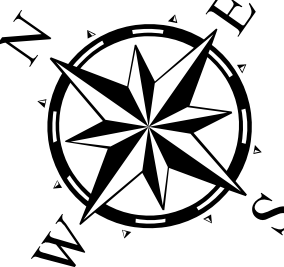
Mapped by: M3AOXPAC

Additional Imagery info:

Authorized Depth: -40ft.

Side Slope Ratio: (Rise : Run)

PDF Print Date: 5/15/2023

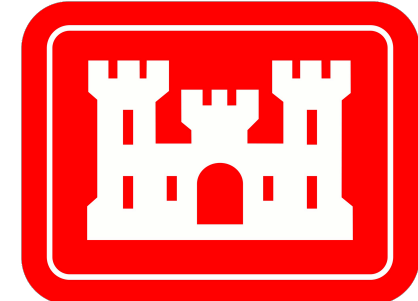


HYDROGRAPHIC SURVEY

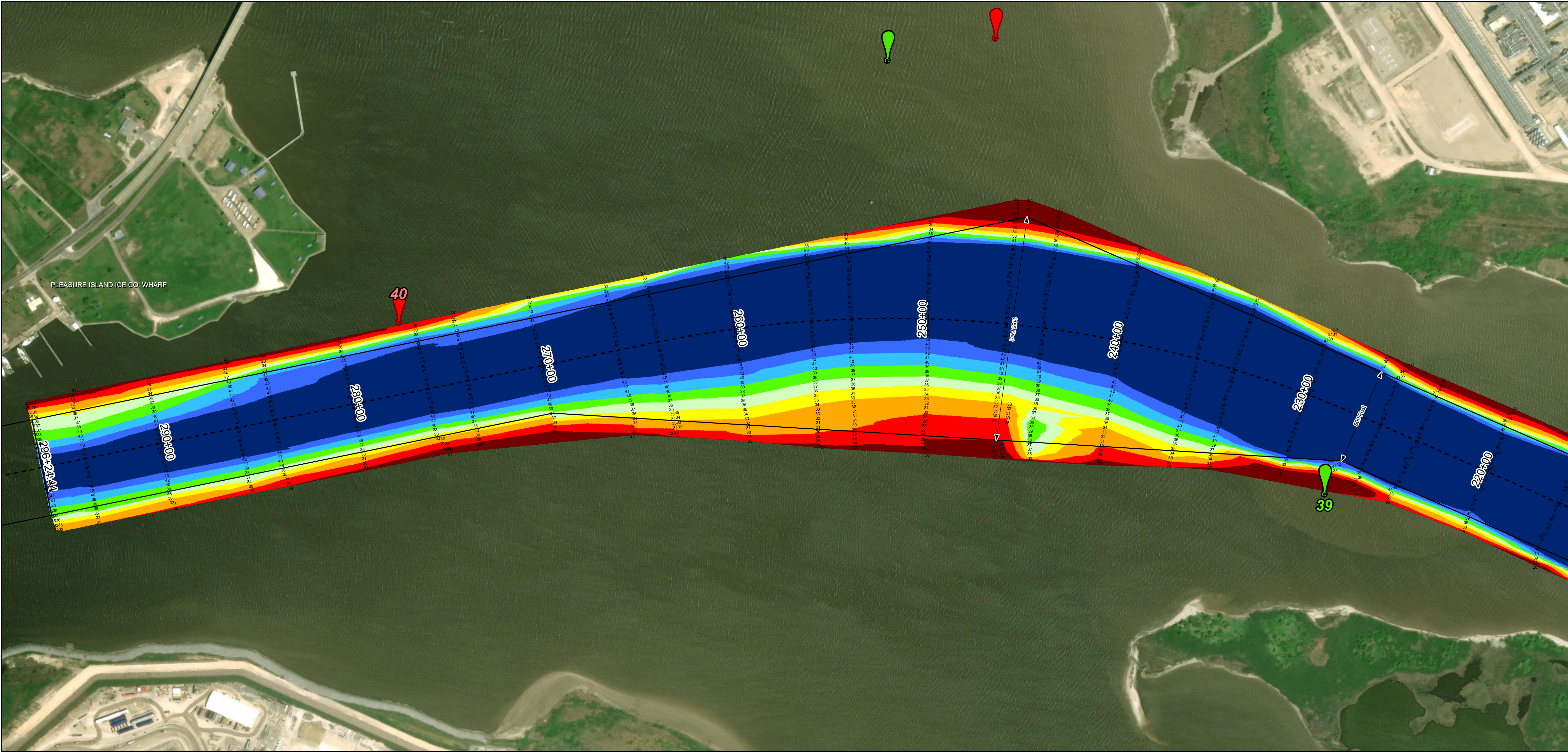
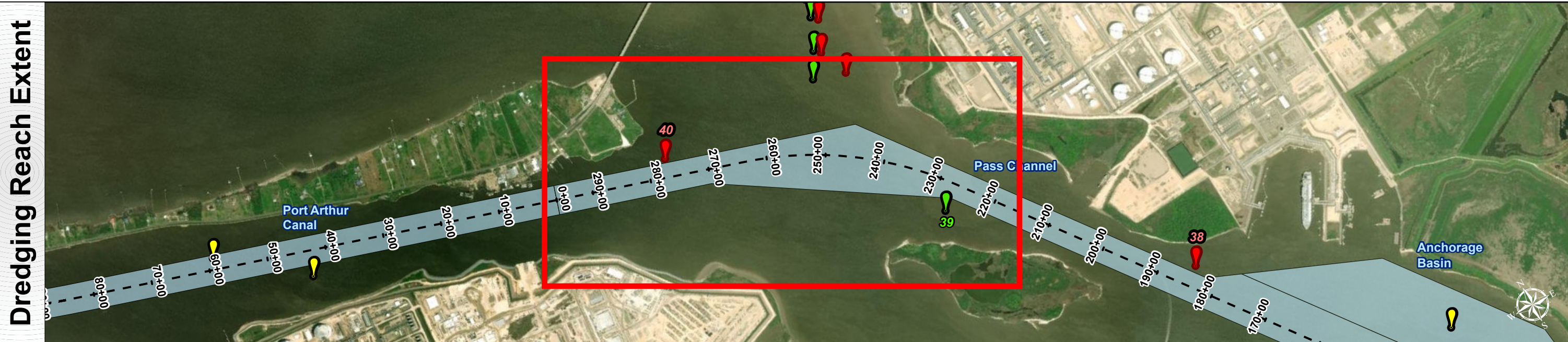
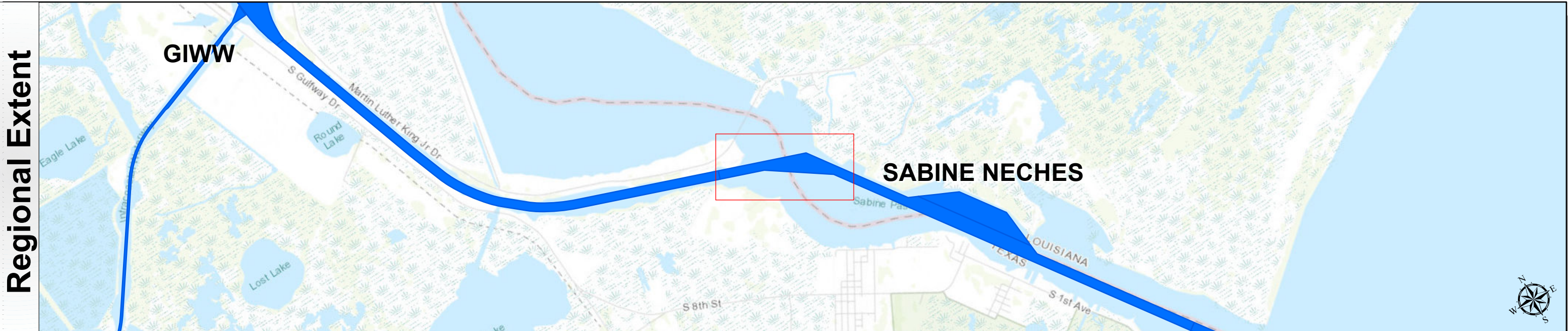
U.S. ARMY ENGINEER DISTRICT
CORPS OF ENGINEERS
GALVESTON, TEXAS

Station: 0+00 to 296+24.44=0+00
SABINE NECHES
Pass Channel

Sabine Neches Waterway: Pass Channel



U.S. Army Corps of Engineers
Galveston District



Channel Features

- Channel Center Line
- Channel Toe
- Channel Station Lines
- Channel Dimensions

Aids to Navigation

- Green Side Aids
- Red Side Aids
- Lights

MLLW

0 - 25	25 - 30	30 - 34	34 - 36	36 - 38	38 - 40	40 - 42	42 - 44	< 44
Dark Blue	Blue	Light Blue	Green	Yellow	Orange	Red	Dark Red	Black

NOTES:

- Horizontal coordinates are referenced to Texas state plane coordinate system, south central zone nad83 us survey feet.
- Elevations are referenced to mean lower low tide (MLLW) datum.
- This project was designed by the Galveston District of the U.S. Army Corps of Engineers. The initials and signatures and registration designations of individuals appear on these project documents within the scope of their employment as required by 47 CFR 111.115-111.122.
- The information depicted on this survey map represents the results of surveys made on the dates indicated and can only be considered as indicating the general conditions existing at that time. These conditions are subject to rapid change due to shoaling events. A prudent mariner should not rely exclusively on the information provided here. Required by 33 CFR 209.325
- For the most up to date information please check our website at: <http://www.svg.usace.army.mil/Missions/Navigation/HydrographicSurveys/>

Service Layer Credits: World Topographic Map: Texas Parks & Wildlife, Esri, HERE, Garmin, INCREMENT P, USGS, METINASA, NGA, EPA, USDA
World Ocean Base: Esri, GEBCO, DeLorme, NaturalVue
World Imagery: Maxar

Additional Combined Survey Dates and Stationing:
Combined survey dates 20230509_PR_0P00_170P00; 20230511_PR_171P00_296P25

Coordinate System: NAD 1983 StatePlane Texas South Central FIPS 4204 Feet
Projection: Lambert Conformal Conic

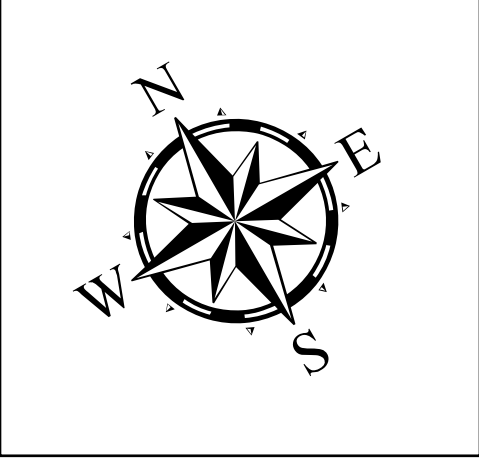
Dredging Reach Extent

0 0.3 0.6 1.2 Miles

Hydrographic Survey Extent

0 255 510 1,020 Feet

Latest Survey Collection Date: 11 May 2023	Authorized Depth: -40ft.
Document Page: 4 of 4	Side Slope Ratio: (Rise : Run)
Scale: 1:3,000	PDF Print Date: 5/15/2023
Mapped by: M3AOXPAC	
Additional Imagery info:	



HYDROGRAPHIC SURVEY
U.S. ARMY ENGINEER DISTRICT
CORPS OF ENGINEERS
GALVESTON, TEXAS

Station: 0+00 to 296+24.44=0+00
SABINE NECHES
Pass Channel