

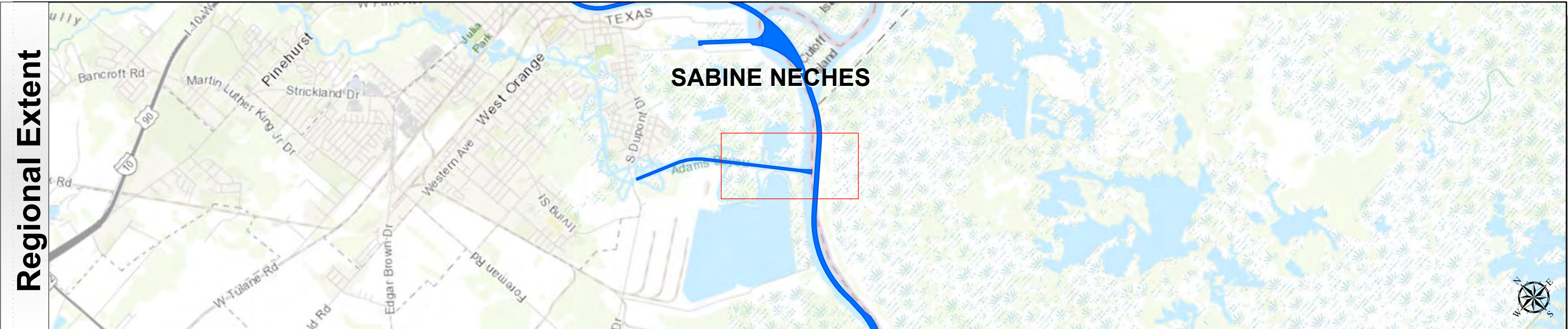
# Sabine Neches Waterway: Adams Bayou Channel



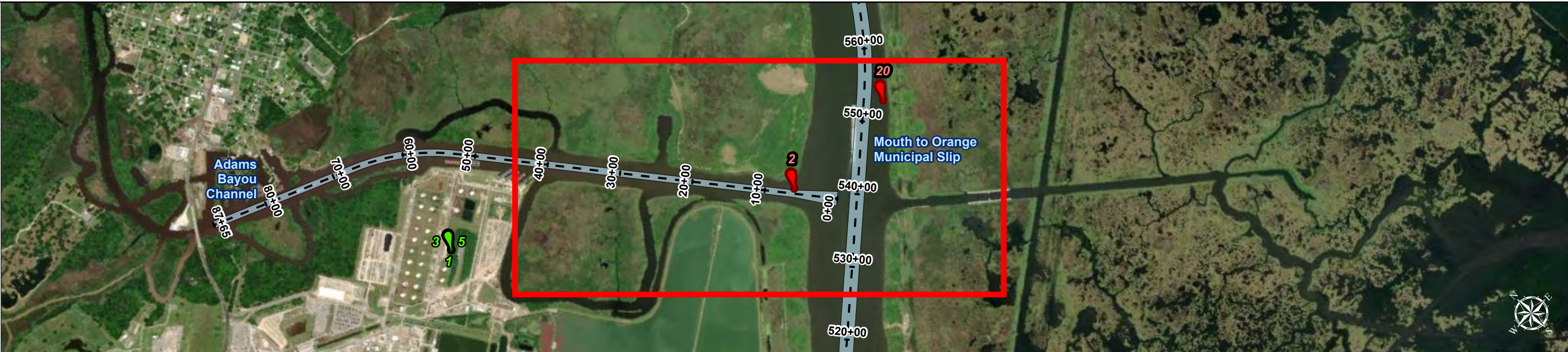
U.S. Army Corps of Engineers  
Galveston District



Regional Extent



Dredging Reach Extent



Channel Features

- Channel Center Line
- Channel Toe
- Channel Station Lines
- Channel Dimensions

Aids to Navigation

- Green Side Aids
- Red Side Aids
- Lights

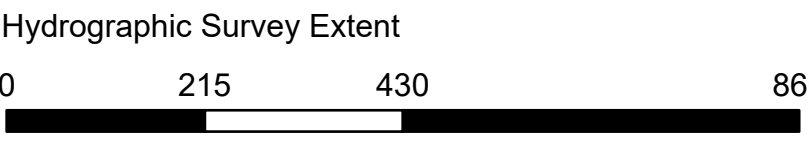
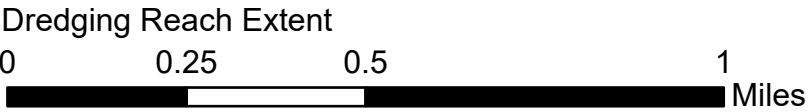
MLLW



NOTES:  
1. Horizontal coordinates are referenced to Texas state plane coordinate system, south central zone nad83 us survey feet.  
2. Elevations are referenced to mean lower low tide (MLLW) datum.  
3. This project was designed by the Galveston District of the U.S. Army Corps of Engineers. The initials and signatures and registration designations of individuals appear on these project documents within the scope of their employment as required by 47 CFR 111.05-61152.  
4. The information depicted on this survey map represents the results of surveys made on the dates indicated and can only be considered as indicating the general conditions existing at that time. These conditions are subject to rapid change due to shoaling events. A prudent mariner should not rely exclusively on the information provided here. Required by 33 CFR 209.325  
5. For the most up to date information please check our website at: <http://www.svg.usace.army.mil/Missions/Navigation/HydrographicSurveys/>  
Service Layer Credits: World Topographic Map: Texas Parks & Wildlife, Esri, HERE, Garmin, INCREMENT P, USGS, METI/NASA, NGA, EPA, USDA  
World Imagery: Maxar

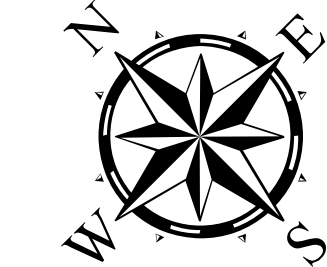
Additional Combined Survey Dates and Stationing:  
COMB\_SURV\_INFO\_HERE

Coordinate System: NAD 1983 StatePlane Texas South Central FIPS 4204 Feet  
Projection: Lambert Conformal Conic



HYDROGRAPHIC SURVEY

U.S. ARMY ENGINEER DISTRICT  
CORPS OF ENGINEERS  
GALVESTON, TEXAS  
**Station: 0+00 to 82+00**  
**SABINE NECHES**  
Adams Bayou Channel



Latest Survey Collection Date: 06 April 2023

Document Page: 1 of 3

Website Index Number: 72

Scale: 1"=2,500'

Mapped by: M3AOXPAC

Additional Imagery info:

Authorized Depth: -13ft.

Side Slope Ratio: (Rise : Run)

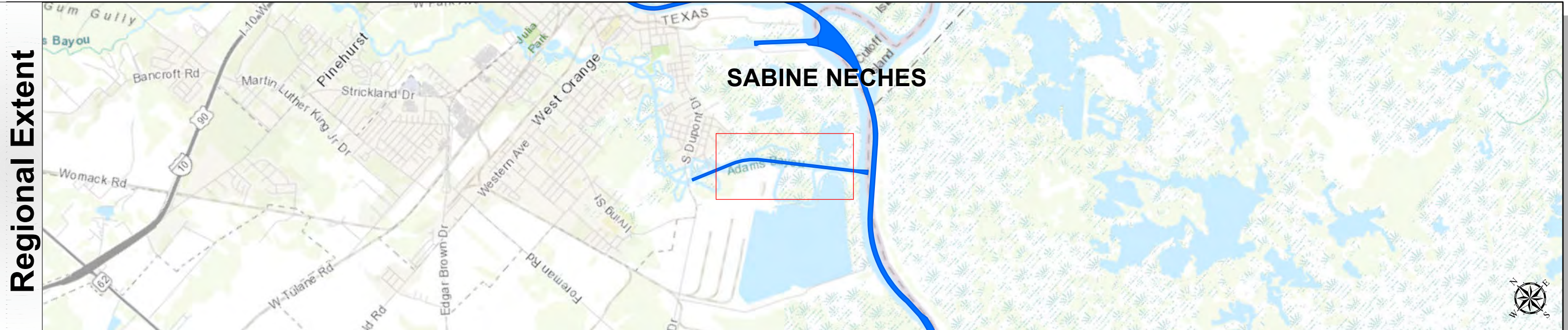
PDF Print Date: 4/12/2023



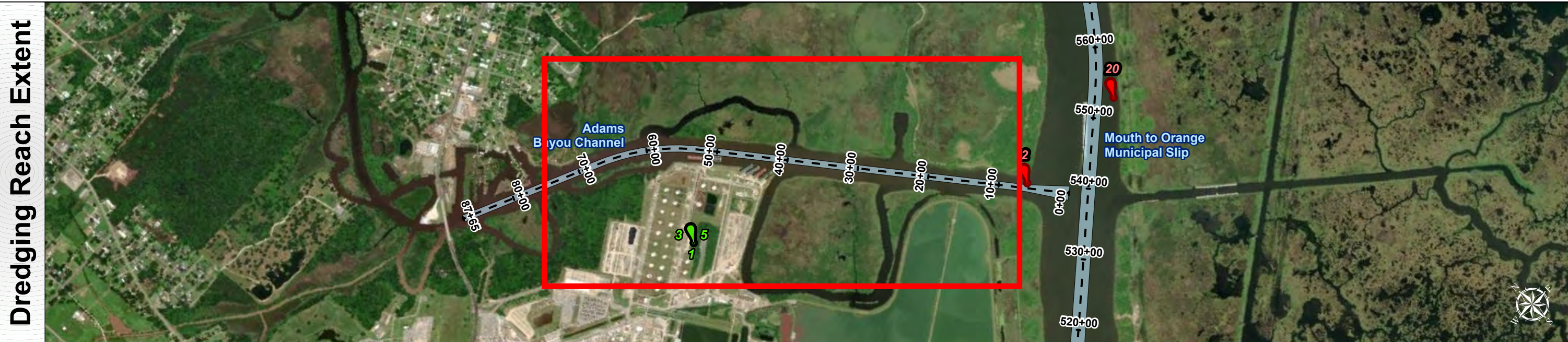
# Sabine Neches Waterway: Adams Bayou Channel



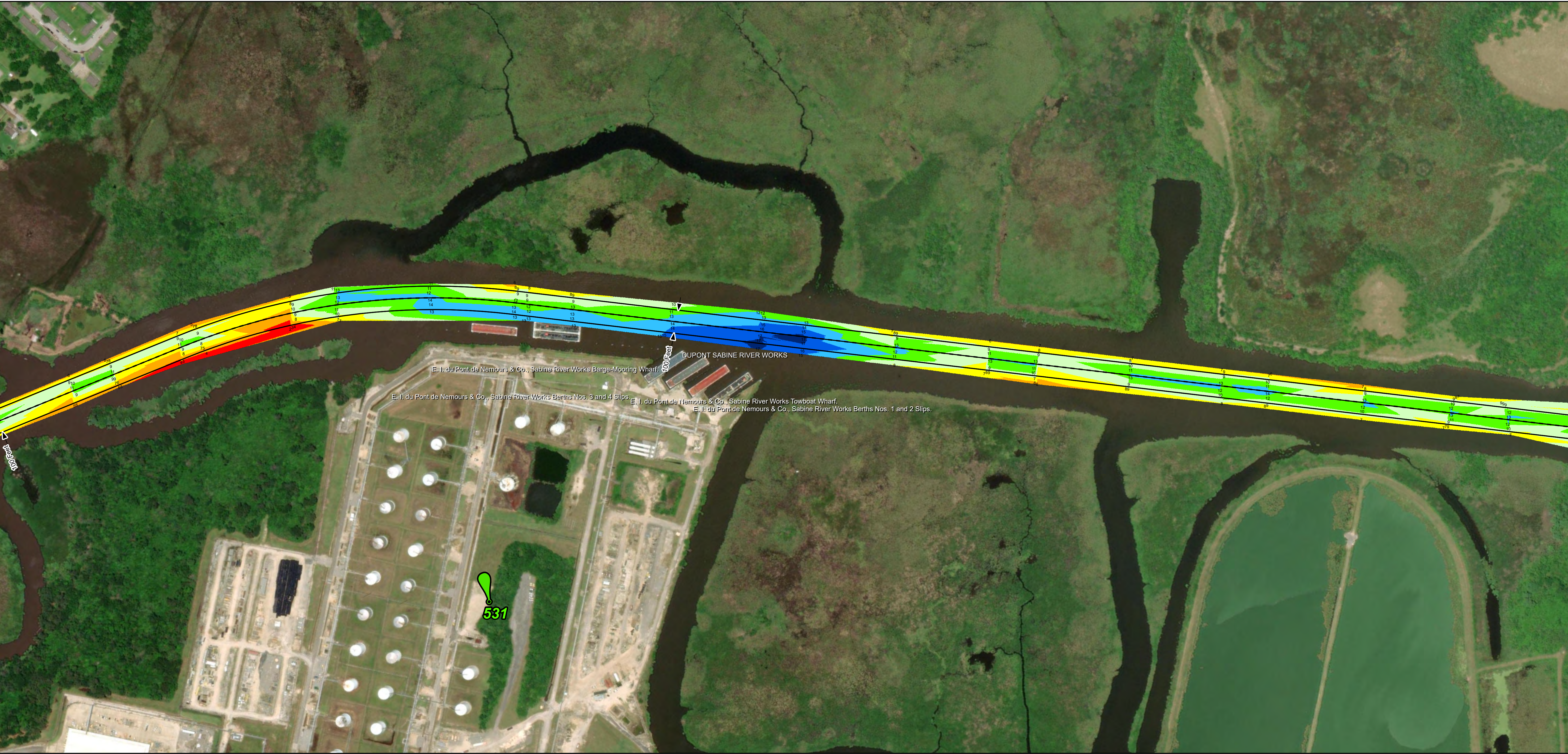
U.S. Army Corps of Engineers  
Galveston District



Regional Extent



Dredging Reach Extent



**Channel Features**

- Channel Center Line
- Channel Toe
- Channel Station Lines
- Channel Dimensions

**Aids to Navigation**

- Green Side Aids
- Red Side Aids
- Lights

**MLLW**

0 - 3	3 - 5	5 - 7	7 - 9	9 - 11	11 - 13	13 - 15	15 - 17	< 17
Dark Red	Red	Orange	Yellow	Light Green	Green	Light Blue	Blue	Dark Blue

**NOTES:**

- Horizontal coordinates are referenced to Texas state plane coordinate system, south central zone nad83 us survey feet.
- Elevations are referenced to mean lower low tide (MLLW) datum.
- This project was designed by the Galveston District of the U.S. Army Corps of Engineers. The initials and signatures and registration designations of individuals appear on these project documents within the scope of their employment as required by 47 CFR 111.11-111.12.
- The information depicted on this survey map represents the results of surveys made on the dates indicated and can only be considered as indicating the general conditions existing at that time. These conditions are subject to rapid change due to shoaling events. A prudent mariner should not rely exclusively on the information provided here. Required by 33 CFR 209.325.
- For the most up to date information please check our website at: <http://www.svg.usace.army.mil/Missions/Navigation/HydrographicSurveys/>

Service Layer Credits: World Topographic Map: Texas Parks & Wildlife, Esri, HERE, Garmin, INCREMENT P, USGS, MET/NASA, NGA, EPA, USDA  
World Imagery: Maxar

Additional Combined Survey Dates and Stationing:  
COMB\_SURV\_INFO\_HERE

Coordinate System: NAD 1983 StatePlane Texas South Central FIPS 4204 Feet  
Projection: Lambert Conformal Conic

Dredging Reach Extent

0 0.25 0.5 1 Miles

Hydrographic Survey Extent

0 215 430 860 Feet

Latest Survey Collection Date: 06 April 2023	Authorized Depth: -13ft.
Document Page: 2 of 3	Side Slope Ratio: (Rise : Run)
Scale: 1"=2,500'	PDF Print Date: 4/12/2023
Mapped by: M3AOXPAC	
Additional Imagery info:	



**HYDROGRAPHIC SURVEY**

U.S. ARMY ENGINEER DISTRICT  
CORPS OF ENGINEERS  
GALVESTON, TEXAS


**Station: 0+00 to 82+00**

**SABINE NECHES**


Adams Bayou Channel



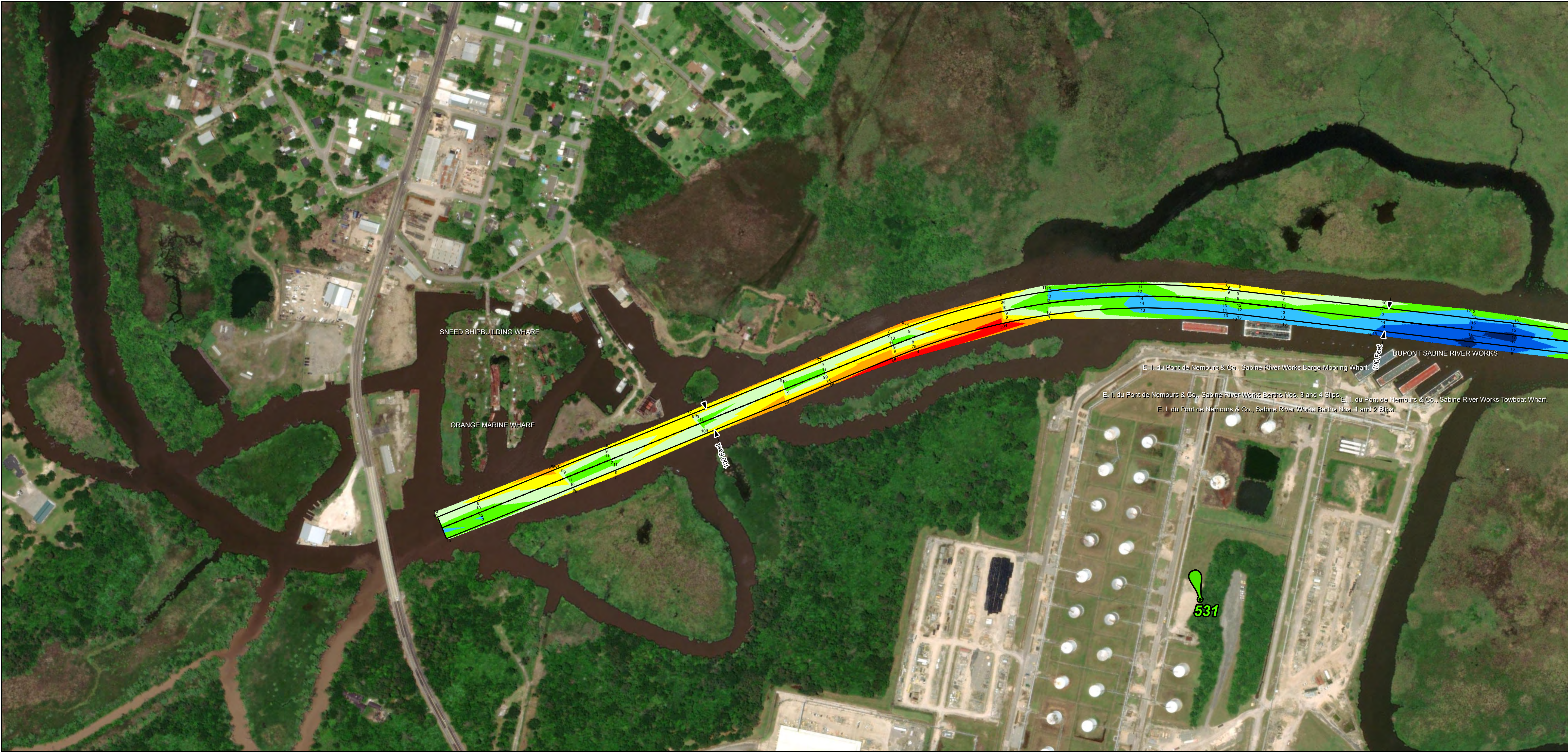
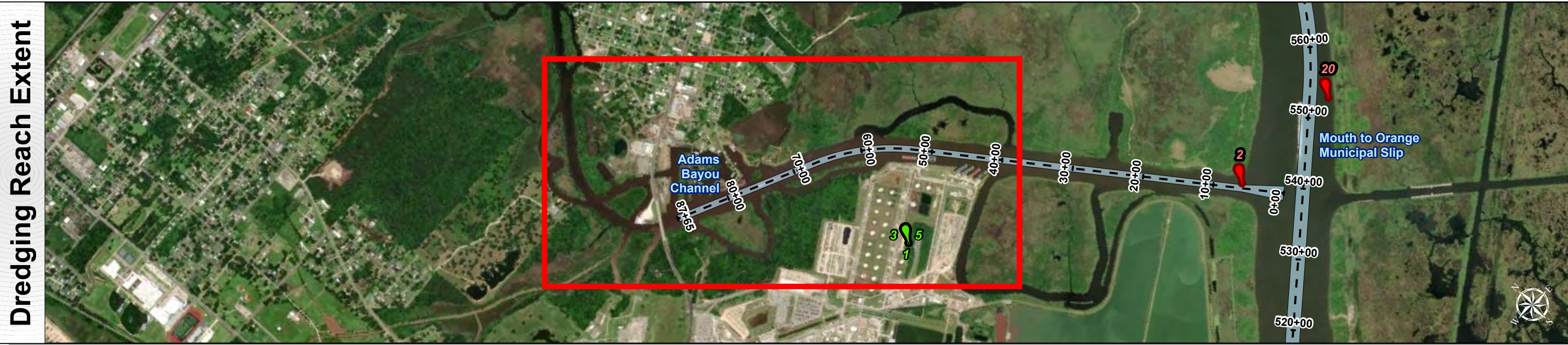
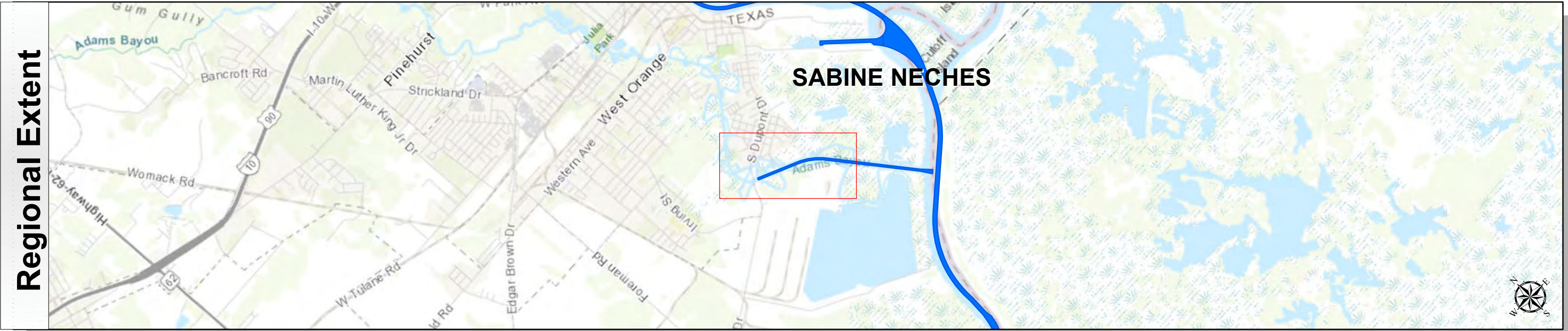
# Sabine Neches Waterway: Adams Bayou Channel



U.S. Army Corps of Engineers  
Galveston District



TEXAS



**Channel Features**

- Channel Center Line
- Channel Toe
- Channel Station Lines
- Channel Dimensions

**Aids to Navigation**

- Green Side Aids
- Red Side Aids
- Lights

**MLLW**

0 - 3	3 - 5	5 - 7	7 - 9	9 - 11	11 - 13	13 - 15	15 - 17	< 17
-------	-------	-------	-------	--------	---------	---------	---------	------

NOTES:  
1. Horizontal coordinates are referenced to Texas state plane coordinate system, south central zone nad83 us survey feet.  
2. Elevations are referenced to mean lower low tide (MLLW) datum.  
3. This project was designed by the Galveston District of the U.S. Army Corps of Engineers. The initials and signatures and registration designations of individuals appear on these project documents within the scope of their employment as required by 47 CFR 111.11-11.12.  
4. The information depicted on this survey map represents the results of surveys made on the dates indicated and can only be considered as indicating the general conditions existing at that time. These conditions are subject to rapid change due to shoaling events. A prudent mariner should not rely exclusively on the information provided here. Required by 33 CFR 209.325.  
5. For the most up to date information please check our website at: <http://www.svg.usace.army.mil/Missions/Navigation/HydrographicSurveys/>  
Service Layer Credits: World Topographic Map: Texas Parks & Wildlife, Esri, HERE, Garmin, INCREMENT P, USGS, MET/NASA, NGA, EPA, USDA  
World Imagery: Maxar

Additional Combined Survey Dates and Stationing:  
COMB\_SURV\_INFO\_HERE

Coordinate System: NAD 1983 StatePlane Texas South Central FIPS 4204 Feet  
Projection: Lambert Conformal Conic

Dredging Reach Extent  
0 0.25 0.5 1 Miles

Hydrographic Survey Extent  
0 215 430 860 Feet

**HYDROGRAPHIC SURVEY**  
U.S. ARMY ENGINEER DISTRICT  
CORPS OF ENGINEERS  
GALVESTON, TEXAS

**Station: 0+00 to 82+00**  
**SABINE NECHES**  
Adams Bayou Channel

Latest Survey Collection Date: 06 April 2023	Authorized Depth: -13ft.
Document Page: 3 of 3	Side Slope Ratio: (Rise : Run)
Scale: 1"=2,500'	PDF Print Date: 4/12/2023
Mapped by: M3AOXPAC	
Additional Imagery info:	

