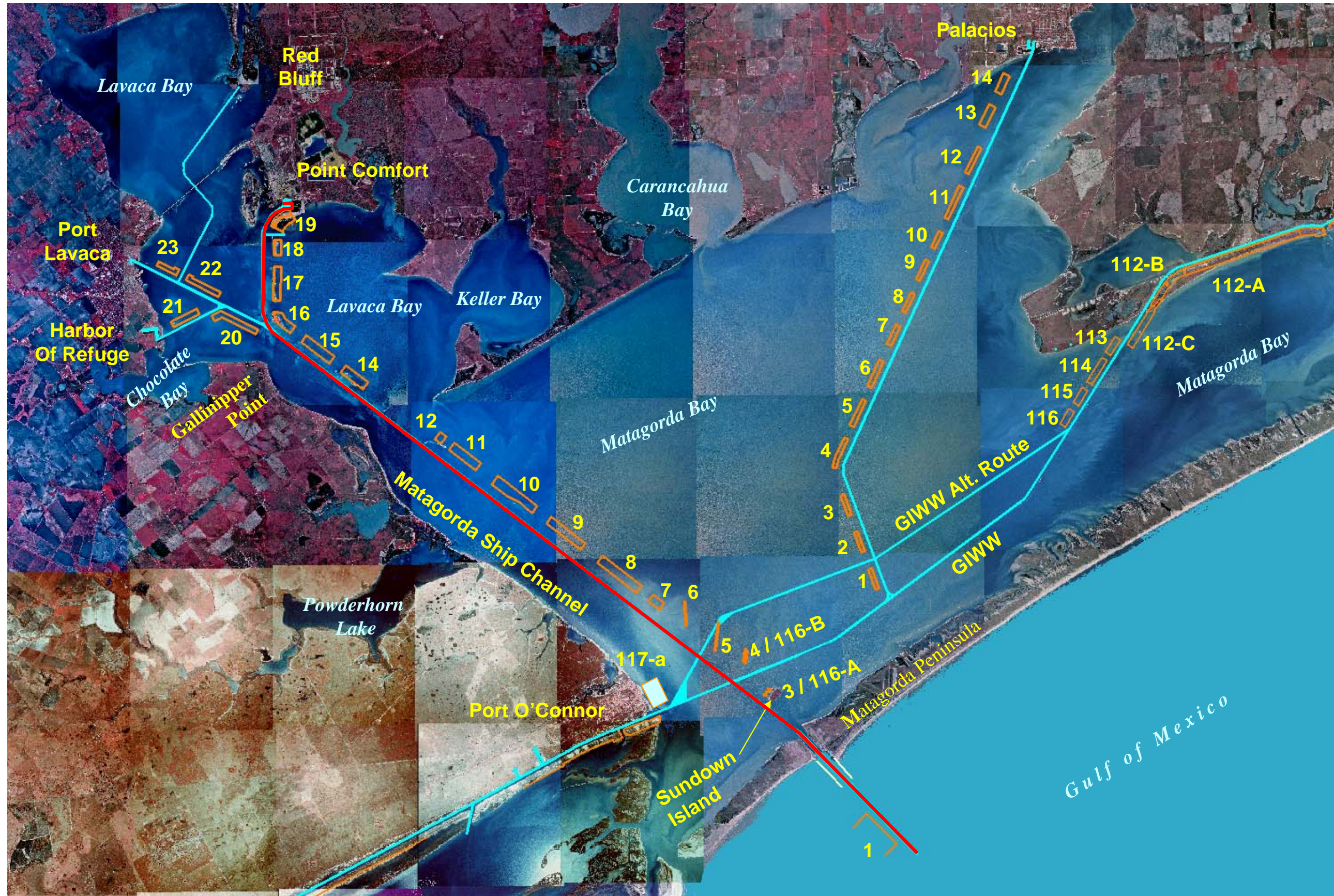
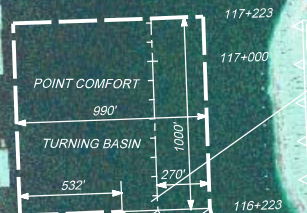
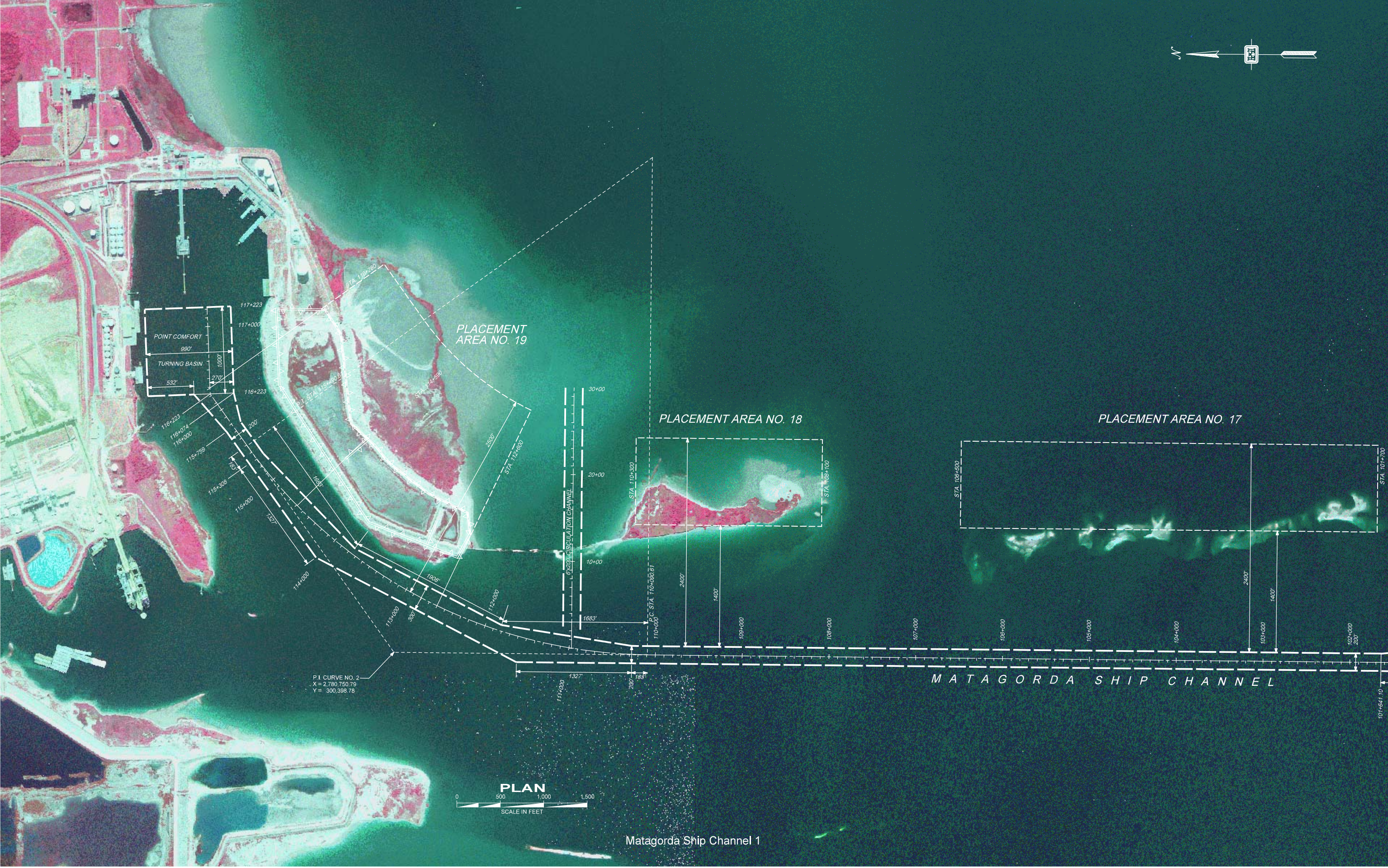




Matagorda Ship Channel





POINT COMFORT
990'
TURNING BASIN
1000'
532'
270'

PLACEMENT AREA NO. 19

PLACEMENT AREA NO. 18

PLACEMENT AREA NO. 17

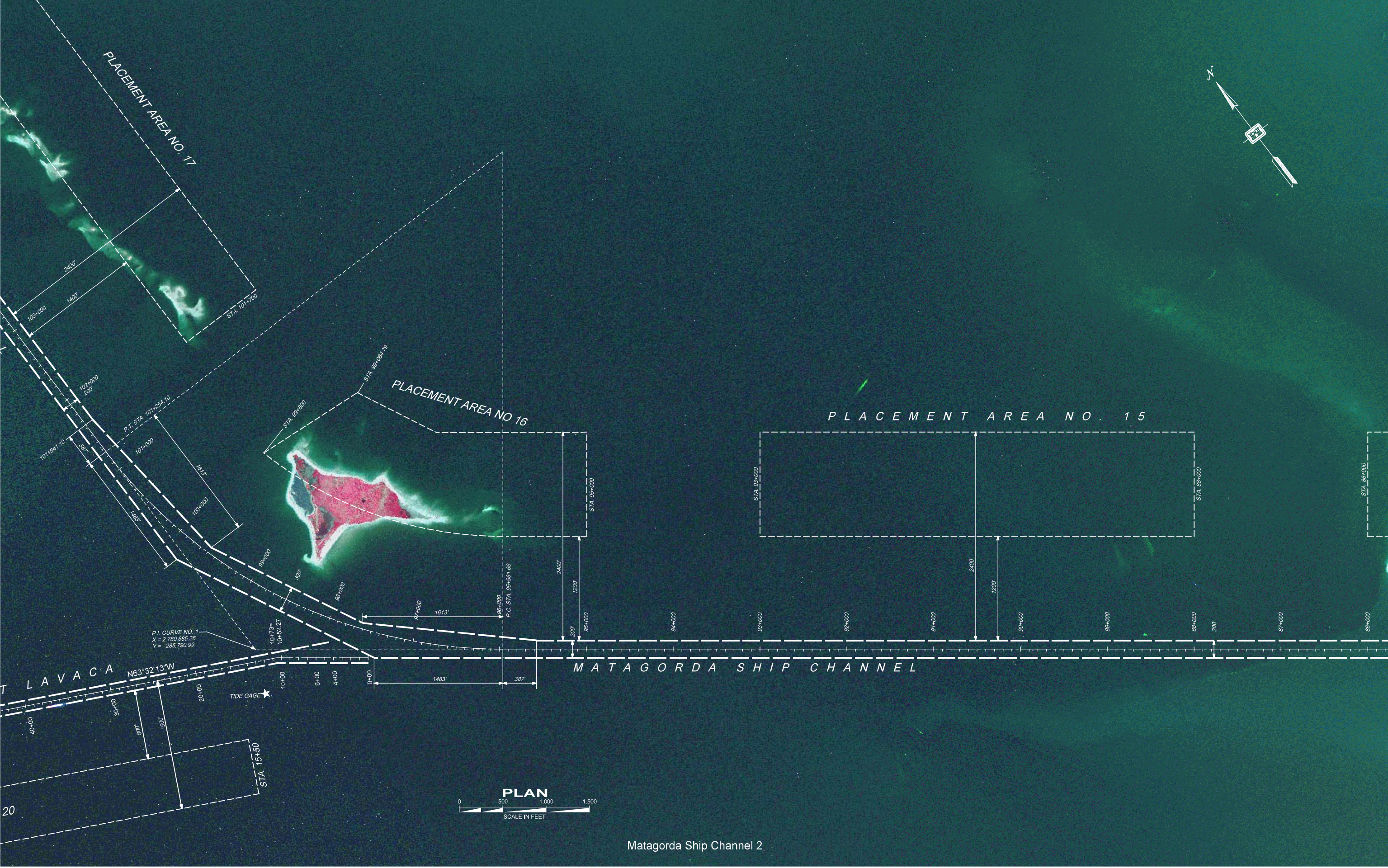
6x200' CIRCULATION CHANNEL

MATAGORDA SHIP CHANNEL

P.I. CURVE NO. 2
X = 2,780,750.79
Y = 300,398.78



Matagorda Ship Channel 1



PLACEMENT AREA NO. 17

PLACEMENT AREA NO. 16

PLACEMENT AREA NO. 15

MATAGORDA SHIP CHANNEL

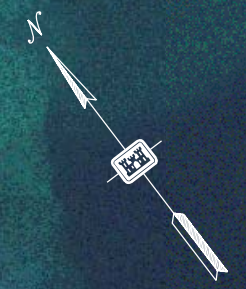
LAVACA N63°32'13"W

P.I. CURVE NO. 1
X = 2,780,685.28
Y = 285,790.99

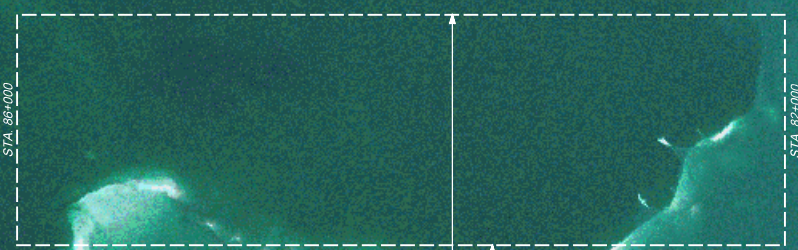
TIDE GAGE

PLAN

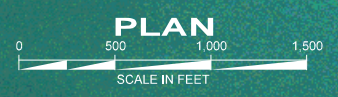
SCALE IN FEET



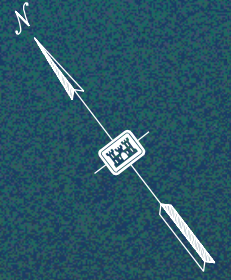
PLACEMENT AREA NO. 14



M A T A G O R D A S H I P C H A N N E L



PROPOSED STRUCTURES:
Sterling Exploration & Pro
State Tract 65 N/2
No. 3 Well 33' 06"
Lat. 28 28' 36"
Long. 96 28' 36"
X = 2,778,518.87569
Y = 13,393,268.65842

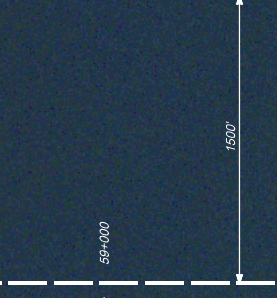
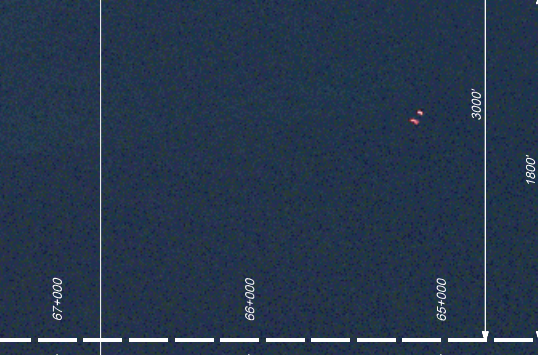
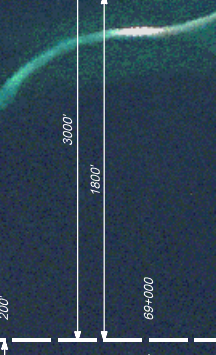
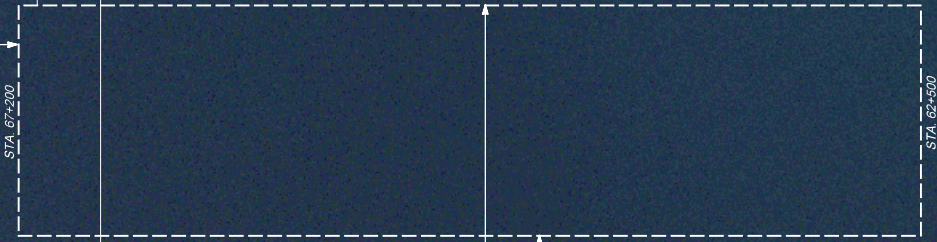
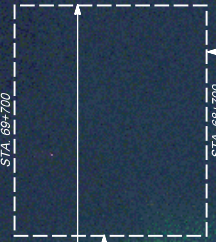


PLACEMENT AREA NO. 11

PLACEMENT AREA NO. 12

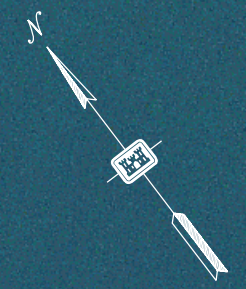
PLACEMENT AREA NO. 10

NOTE: NO DREDGED MATERIAL TO BE PLACED BETWEEN STA. 67+200 TO STA. 68+700



MATAGORDA SHIP CHANNEL

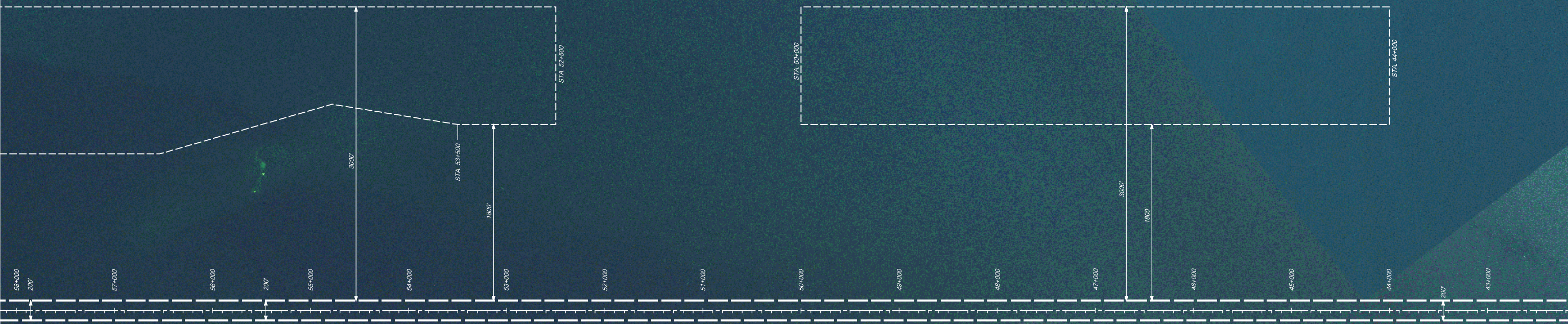




PLACEMENT AREA NO. 10

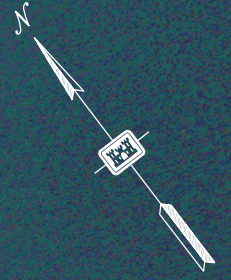
PLACEMENT AREA NO. 10

PLACEMENT AREA NO. 9



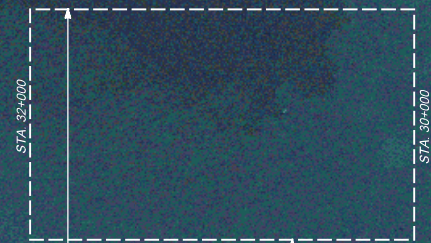
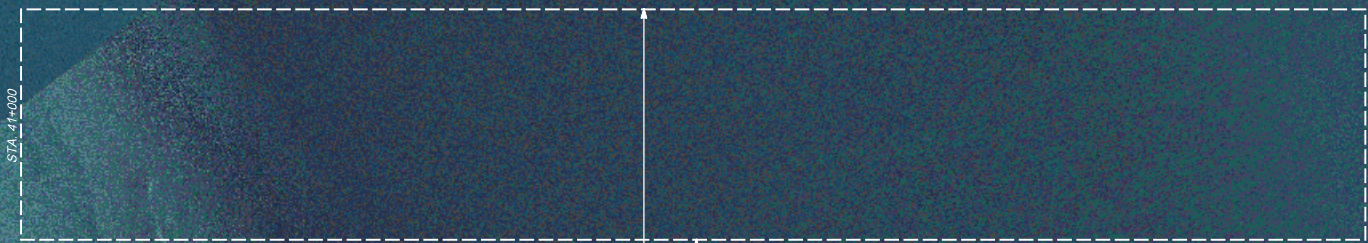
MATAGORDA SHIP CHANNEL





PLACEMENT AREA NO. 8

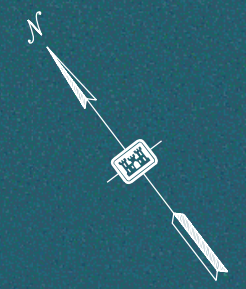
PLACEMENT AREA NO. 7



43+000 42+000 41+000 40+000 39+000 38+000 37+000 36+000 35+000 34+000 33+000 32+000 31+000 30+000 29+000 28+000

MATAGORDA SHIP CHANNEL





Matagorda Ship Channel 7



000+809
000+609
000+019
000+119
612+000
612+219
S 67°44'11" W

PLACEMENT AREA NO 116A

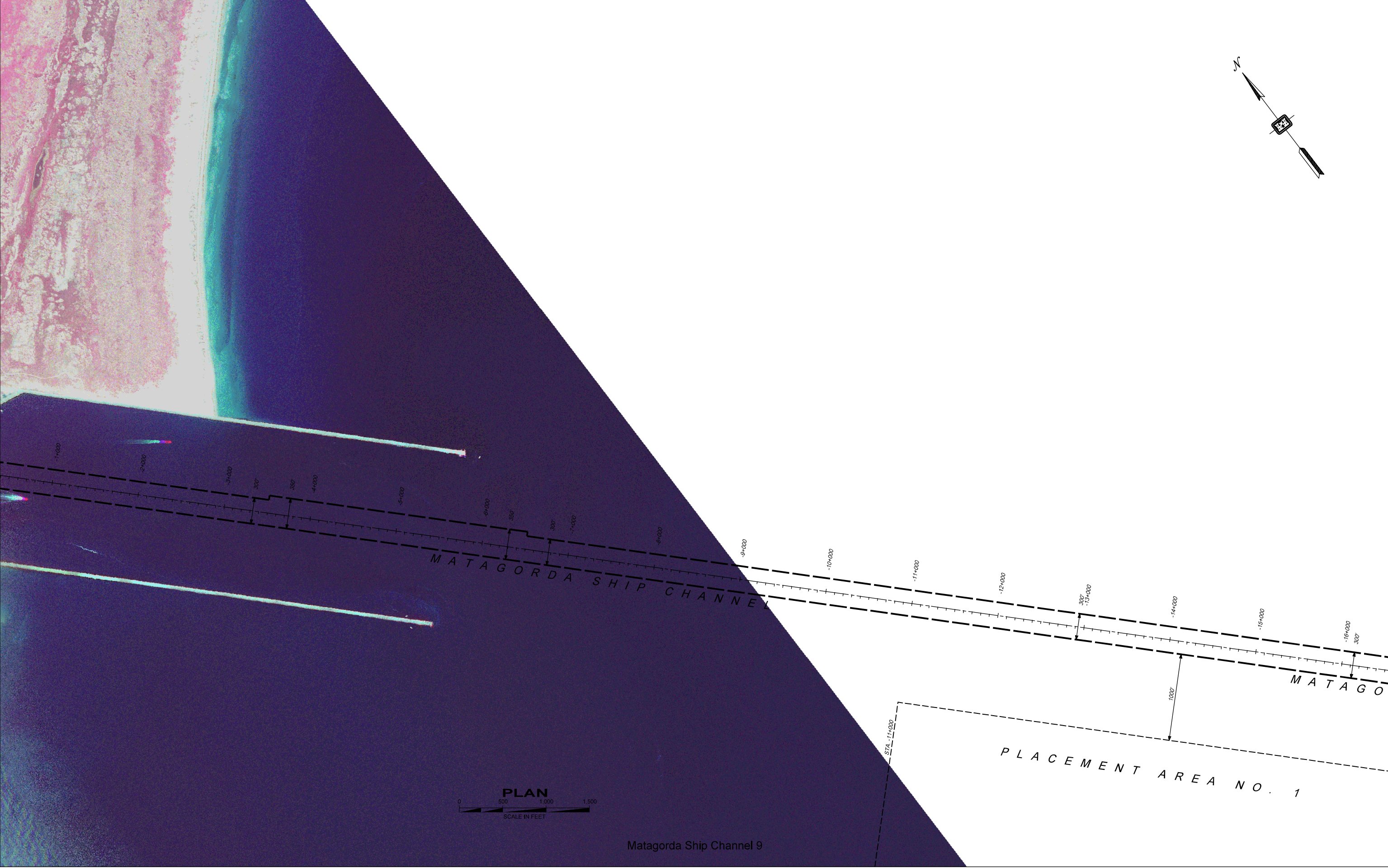
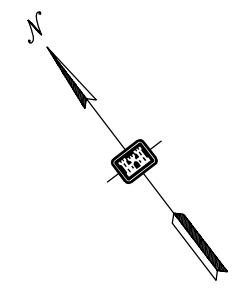


MATAGORDA SHIP CHANNEL

P.I. STA. 3+700
X = 2,856.312,98
Y = 228.116,33



Matagorda Ship Channel 8



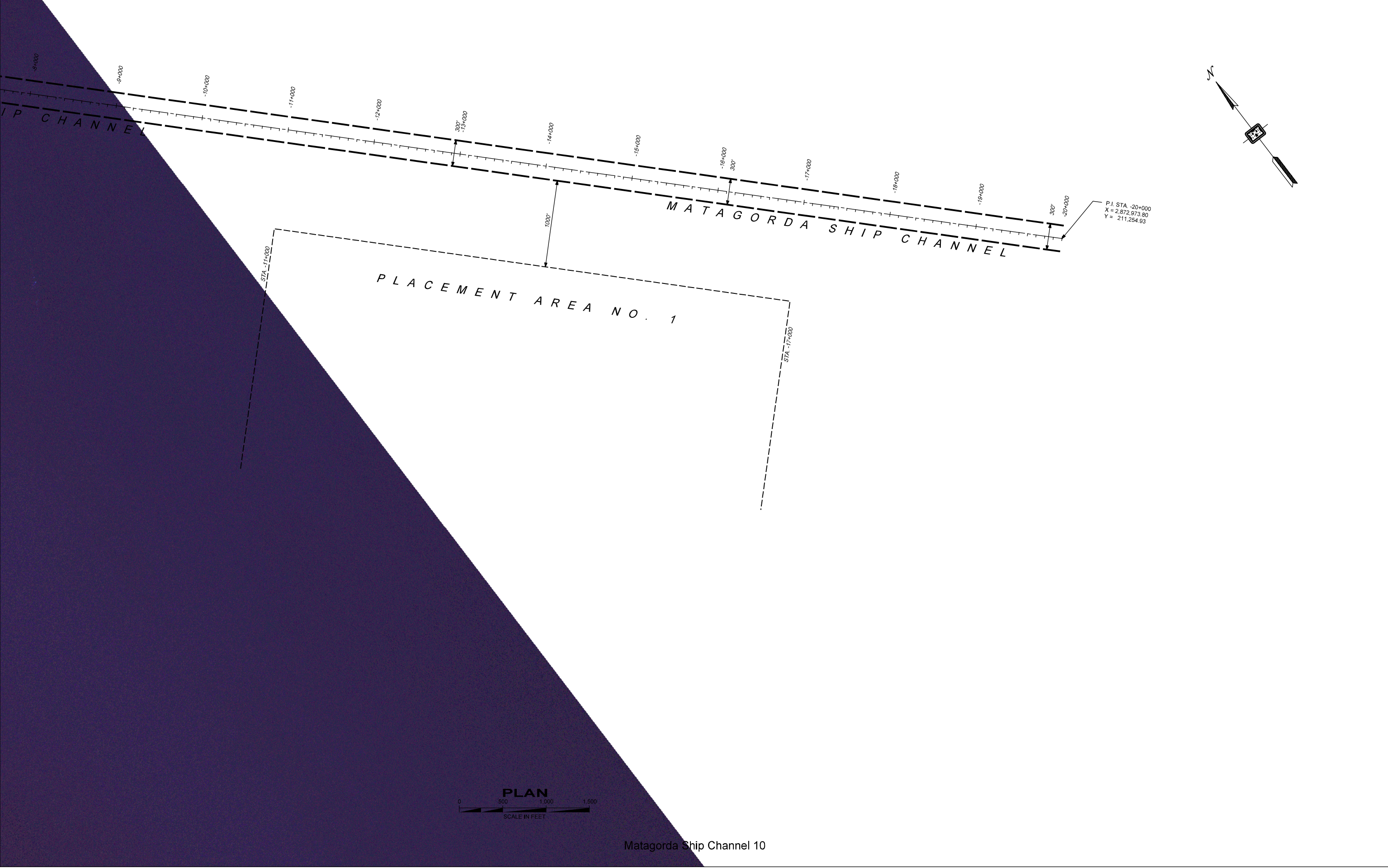
MATAGORDA SHIP CHANNEL

MATAGO

PLACEMENT AREA NO. 1



Matagorda Ship Channel 9



-8+000

-9+000

-10+000

-11+000

-12+000

-13+000

-14+000

-15+000

-16+000

-17+000

-18+000

-19+000

-20+000

IP CHANNEL

MATAGORDA SHIP CHANNEL

PLACEMENT AREA NO. 1

STA -11+000

STA -17+000

P.I. STA -20+000
X = 2,872,973.80
Y = 211,254.93

