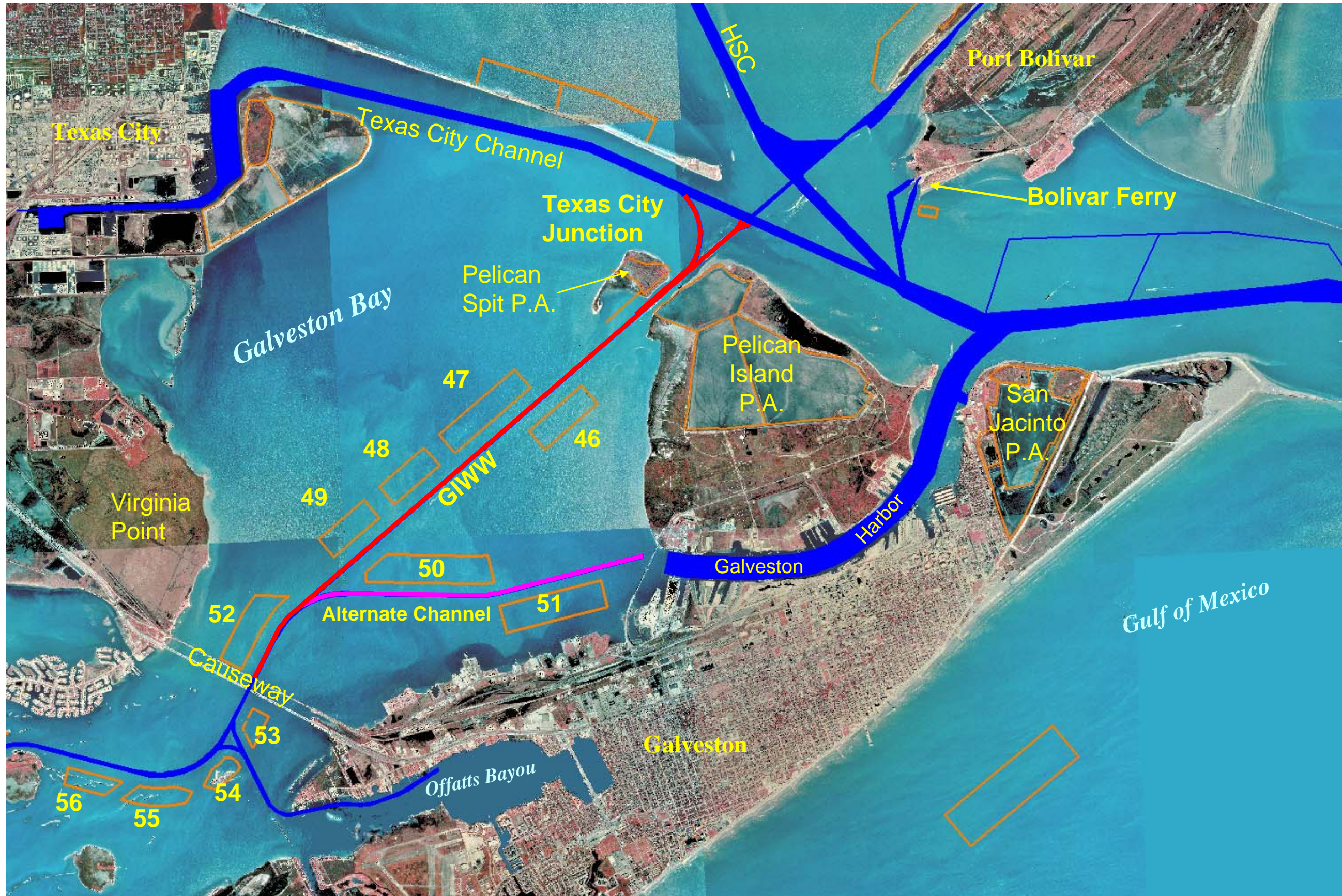
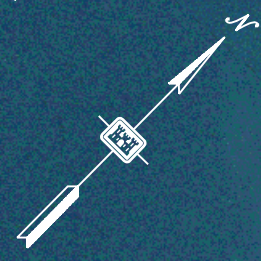




US Army Corps
of Engineers®
Galveston District

GIWW – Gulf Intracoastal Waterway Across Galveston Bay, Texas City “Y”, & Alt. Route thru Galv. Hbr.





$$\begin{aligned} \text{P.I. STA. } & 128+728.999 \\ X & = 3,336,872.623 \\ Y & = 581,805.041 \end{aligned}$$

X=3,336,119.650
Y= 582,151.6490

P.I. STA. 58+29.38 T.C. Channel =
STA. 24+832.79 T.C. Channel

STA. 337.65 G.I.W.W. =
T.C. STA. 0+00 T.C. Channel Junction

Texas City Channel Junction

G.I.W.W.

TRANSITION

Disposal
Area No. 45
(Pelican Spit)

Discharge
Corridor No. 1
Barge Mooring Basin

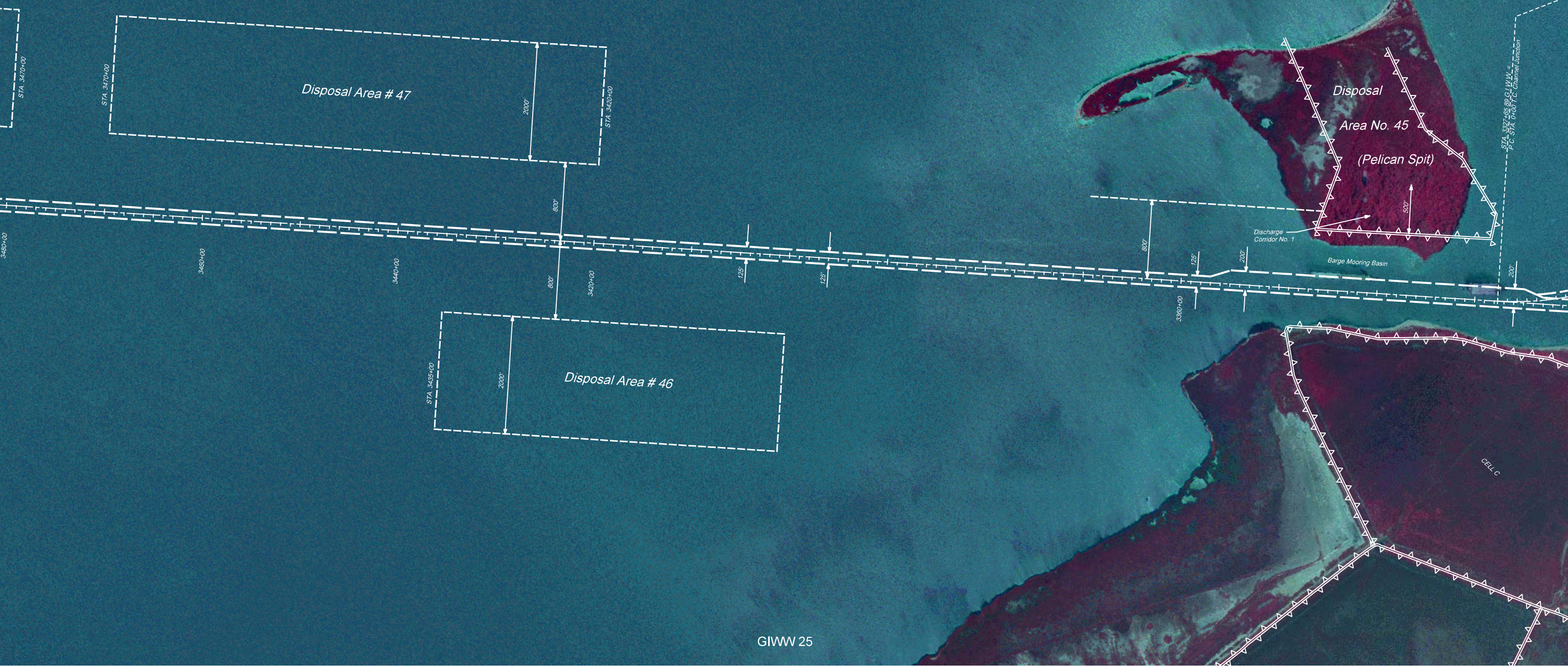
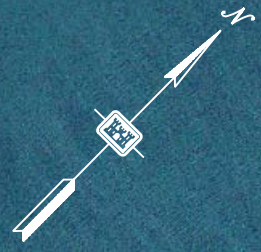
CELL C

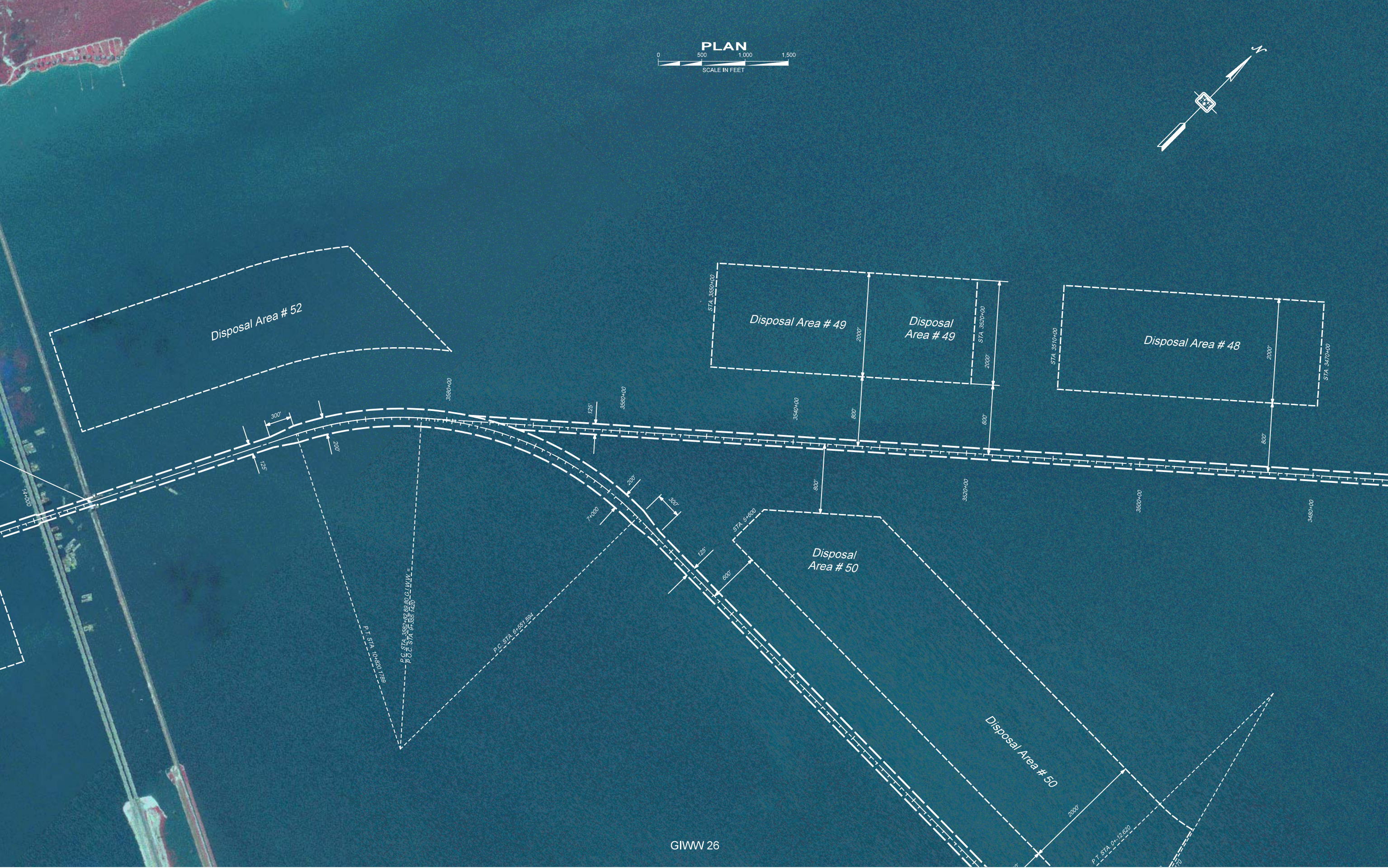
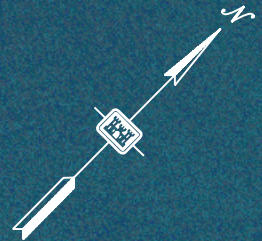
CELL B

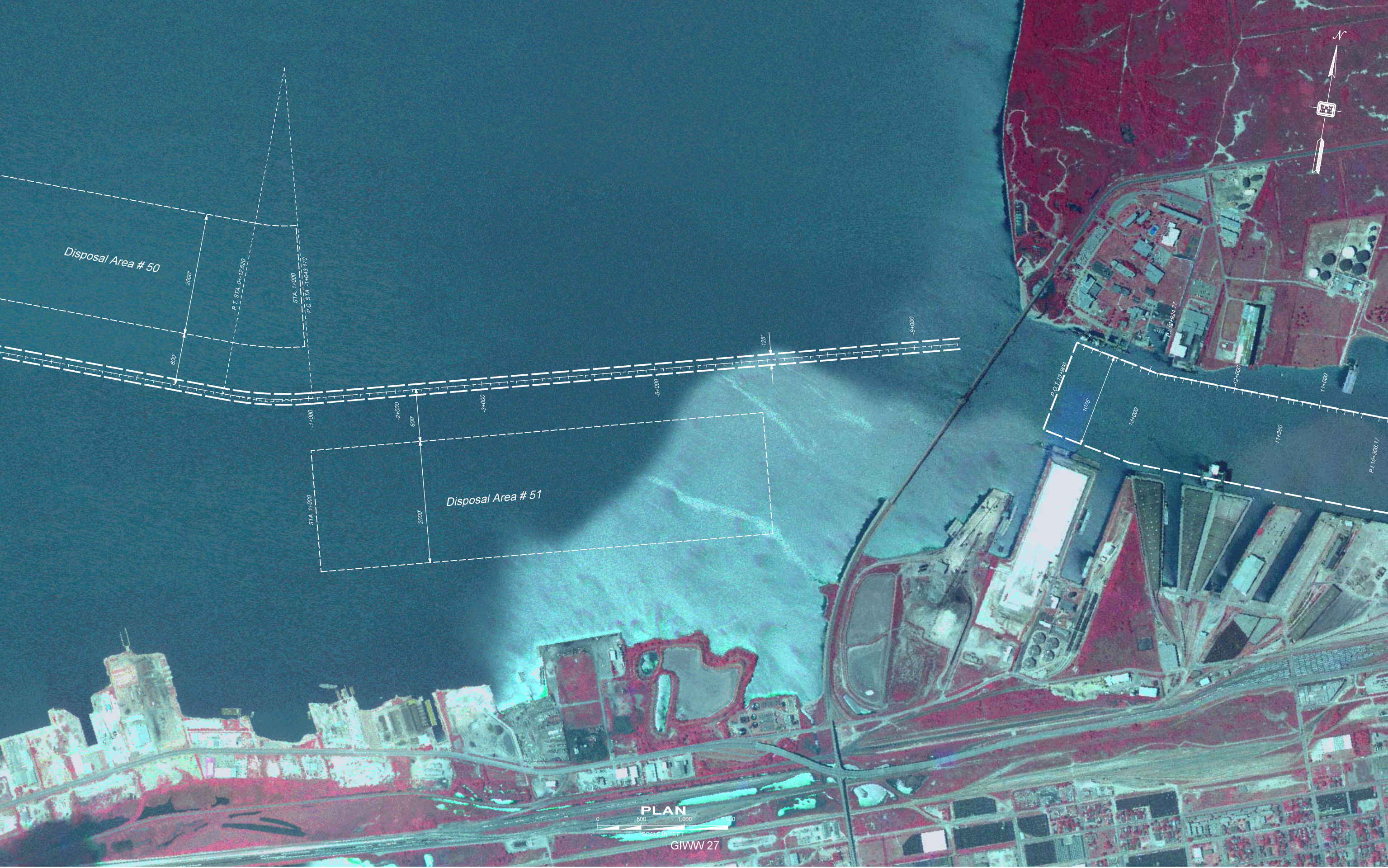
PELIC

GIWW 24









Disposal Area # 50

Disposal Area # 51

P.T. STA. 0+12.820
STA. 1+000
P.C. STA. 1+043.170

STA. 1+000

600'

2000'

0+000

2+000

600'

3+000

5+000

125'

8+000

P.O. 12+930

1075'

13+000

12+000

11+000

11+380

P.I. 10+306.17



PLAN

SCALE IN FEET
GIWW 27

