



US Army Corps
of Engineers®
Galveston District

GIWW – Gulf Intracoastal Waterway Galveston Causeway to Bastrop Bayou





Dispos

(Railroad Crossing and
G.I.W.W. Sta. 13+302.88
X = 3,311, 138.33
Y = 555,240.32

P.O.T. STA. 18+323.5829 G.I.W.W.
P.C. STA. 0+00 OFFATS BAYOU

P.T. STA. 10+66.36

STA 24+32.53 BACK =
STA 24+36.16 FORWARD

P.T. STA. 60+32.55



Placement Area No. 56

Placement Area No. 56

Placement Area No. 55

Placement Area No. 54

Placement Area No. 53

Curve 14

Curve 15

GULF

IN TRA COA STAL

WATERWAY

East Wye

West Wye

BAYOU

28+000

27+000

26+000

25+000

24+000

23+000

22+000

21+000

20+000

19+000

18+000

17+000

16+000

15+000

14+000

125'

125'

125'

125'

125'

125'

20+00

30+00

40+00

50+00

60+00

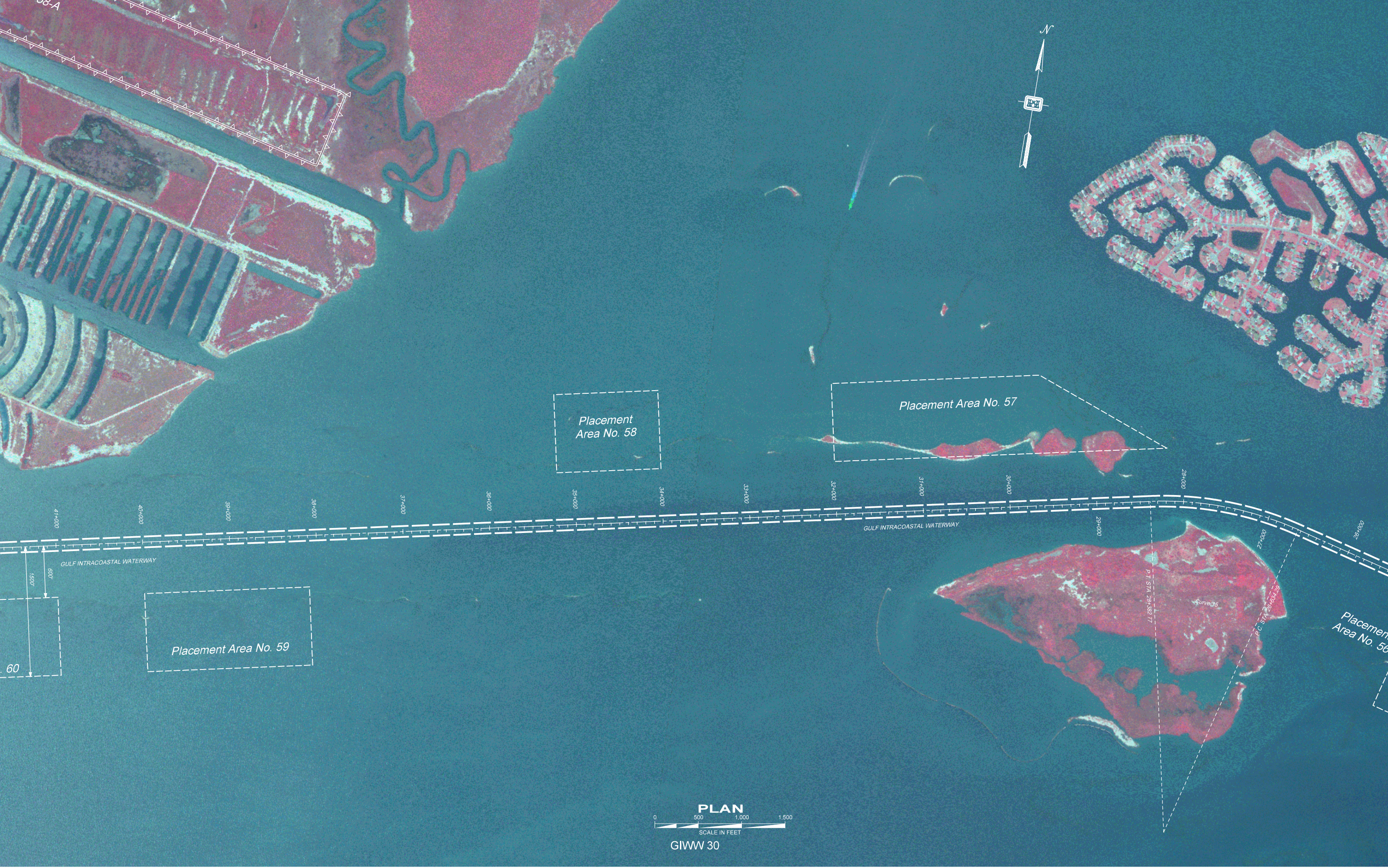
70+00

80+00

300'

200'

125'



Placement Area No. 58

Placement Area No. 57

Placement Area No. 59

Placement Area No. 56

41+000 40+000 39+000 38+000 37+000 36+000 35+000 34+000 33+000 32+000 31+000 30+000 29+000 28+000 27+000 26+000

GULF INTRACOASTAL WATERWAY

GULF INTRACOASTAL WATERWAY

1500
600
60

P.T. STA 28+82.77

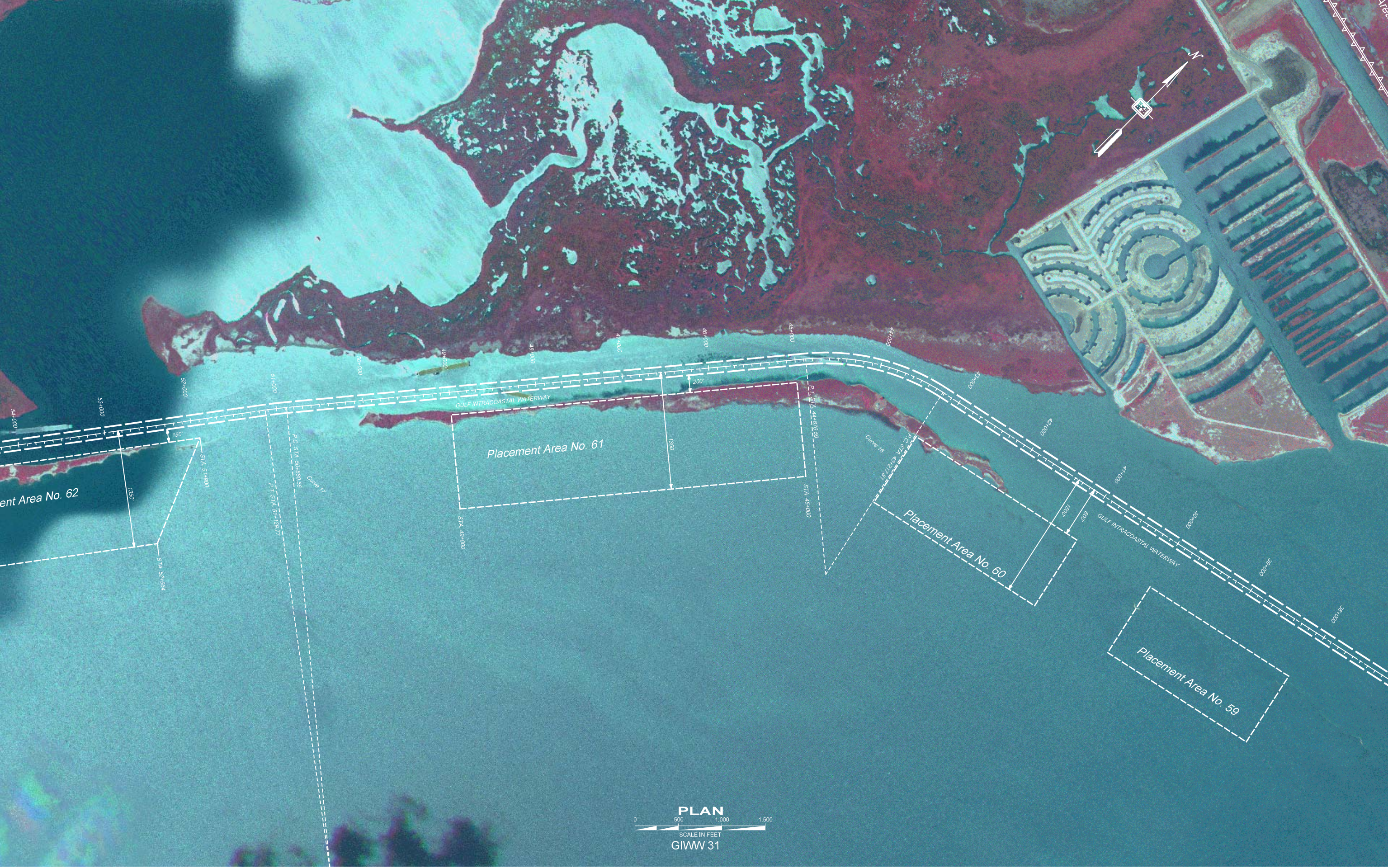
Curve 75

P.C. STA 25+63.39



GIWW 30

PLAN



ent Area No. 62

Placement Area No. 61

Placement Area No. 60

Placement Area No. 59

GULF INTRACOASTAL WATERWAY

GULF INTRACOASTAL WATERWAY

PLAN



SCALE IN FEET
GIWW 31

54+000

53+000

52+000

51+000

50+000

49+000

48+000

47+000

46+000

45+000

44+000

43+000

42+000

41+000

40+000

39+000

38+000

STA 51+910

STA 52+584

P.T. STA 51+287.7

P.C. STA 50+890.96

Curve 15

STA 49+000

STA 45+000

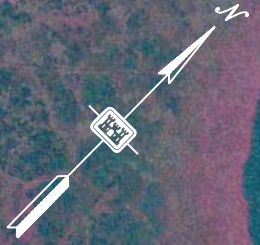
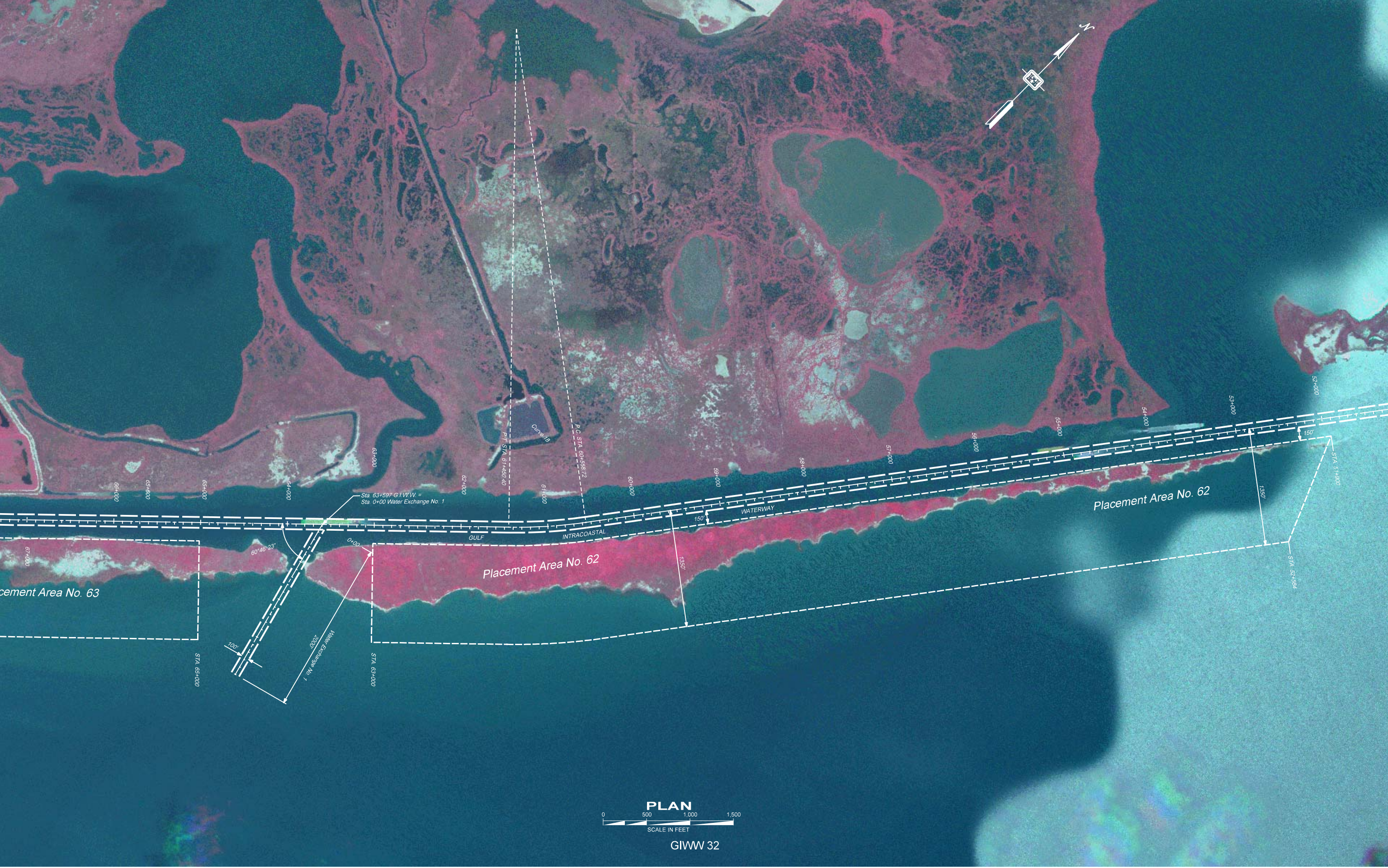
P.T. STA 44+87.82

Curve 16

P.C. STA 43+000

STA 40+000

STA 39+000



Placement Area No. 63

Placement Area No. 62

Placement Area No. 62

STA 68+000

100'

Water Exchange No. 1
2000'

STA 63+000

0+00

Sta. 63+597 G.I.W.W. =
Sta. 0+00 Water Exchange No. 1

GULF

INTRACOASTAL

WATERWAY

Curve 16

P.I. STA 61+450.40

P.C. STA 60+658.72



PLAN

SCALE IN FEET

GIWW 32



Placement Area No. 63

Placement Area No. 63

GULF INTRACOASTAL WATERWAY

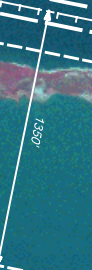
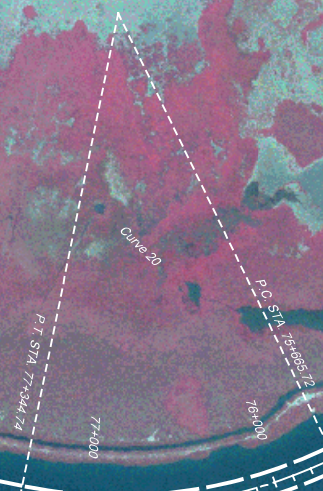
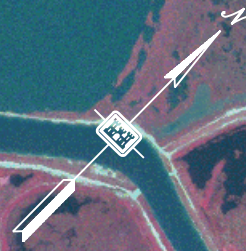
GULF INTRACOASTAL WATERWAY

PLAN



SCALE IN FEET

GIWW 33



80+000

79+000

78+000

77+000

76+000

75+000

74+000

73+000

72+000

71+000

70+000

69+000

68+000

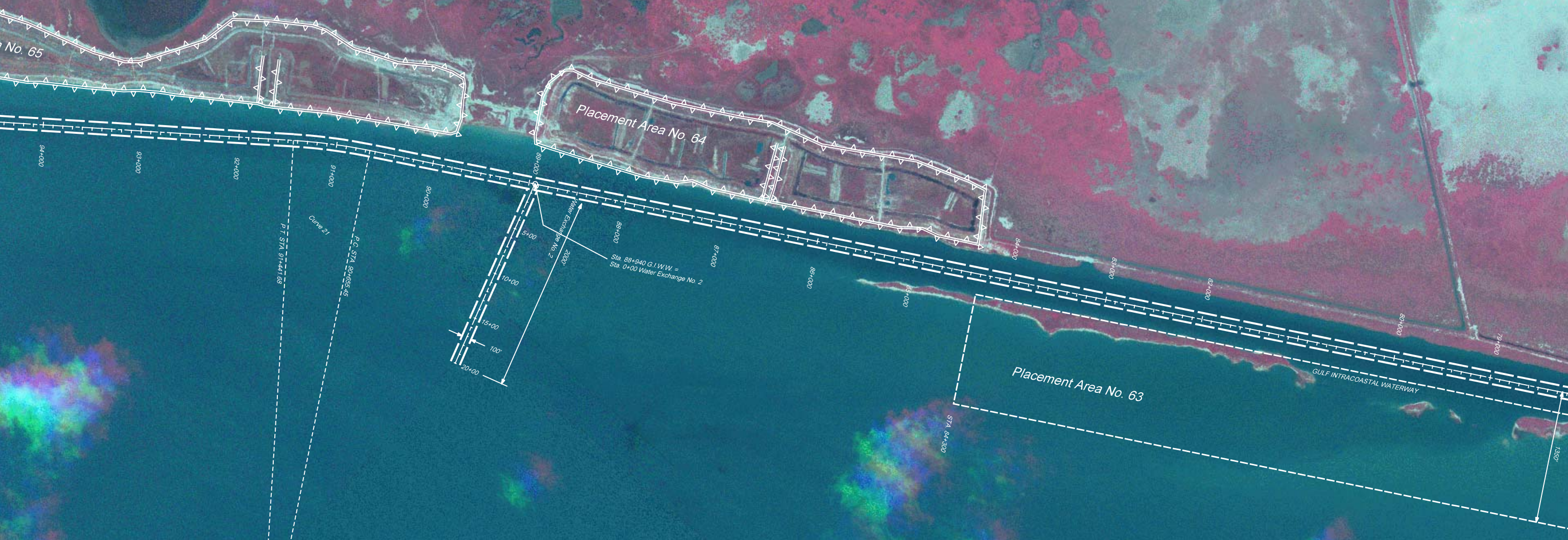
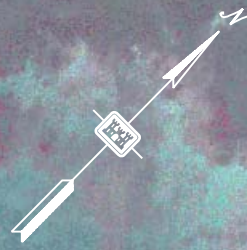
67+000

66+000

65+000

65+000

STA 65+000



No. 65

Placement Area No. 64

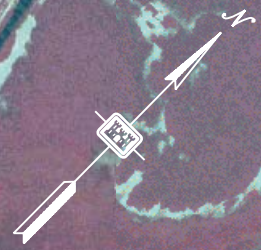
Placement Area No. 63

GULF INTRACOASTAL WATERWAY

Water Exchange No. 2
Sta. 88+940 G.I.W.W. =
Sta. 0+00 Water Exchange No. 2

Cune 21
P.T. STA 91+441.68
P.C. STA 90+556.45

PLAN
SCALE IN FEET
GIWW 34



Placement Area No. 66

Placement Area No. 65

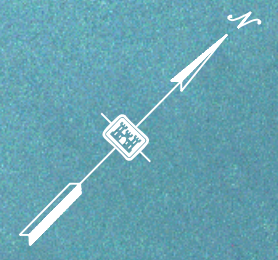
GULF INTRACOASTAL WATERWAY

PLAN
0 500 1,000 1,500
SCALE IN FEET
GIWW 35

STA. 106+632
107+000
106+000
105+000
104+000
103+000
102+000
101+000
100+000
99+000
98+000
97+000
96+000
95+000
94+000
93+000
92+000
91+000

P.T. STA. 106+788.60
P.C. STA. 104+589.27
P.T. STA. 101+889.13
P.C. STA. 98+438.30
P.T. STA. 91+441.68
P.C. STA. 90+556.45

Curve 23
Curve 22
Curve 21



EQUALATION:
P.C. STA. 16+22.20 W/CHOC. BAYOU
= STA. 17+28.67 G.I.W.W.

Placement Area No. 68

Placement Area No. 67

Placement Area No. 66

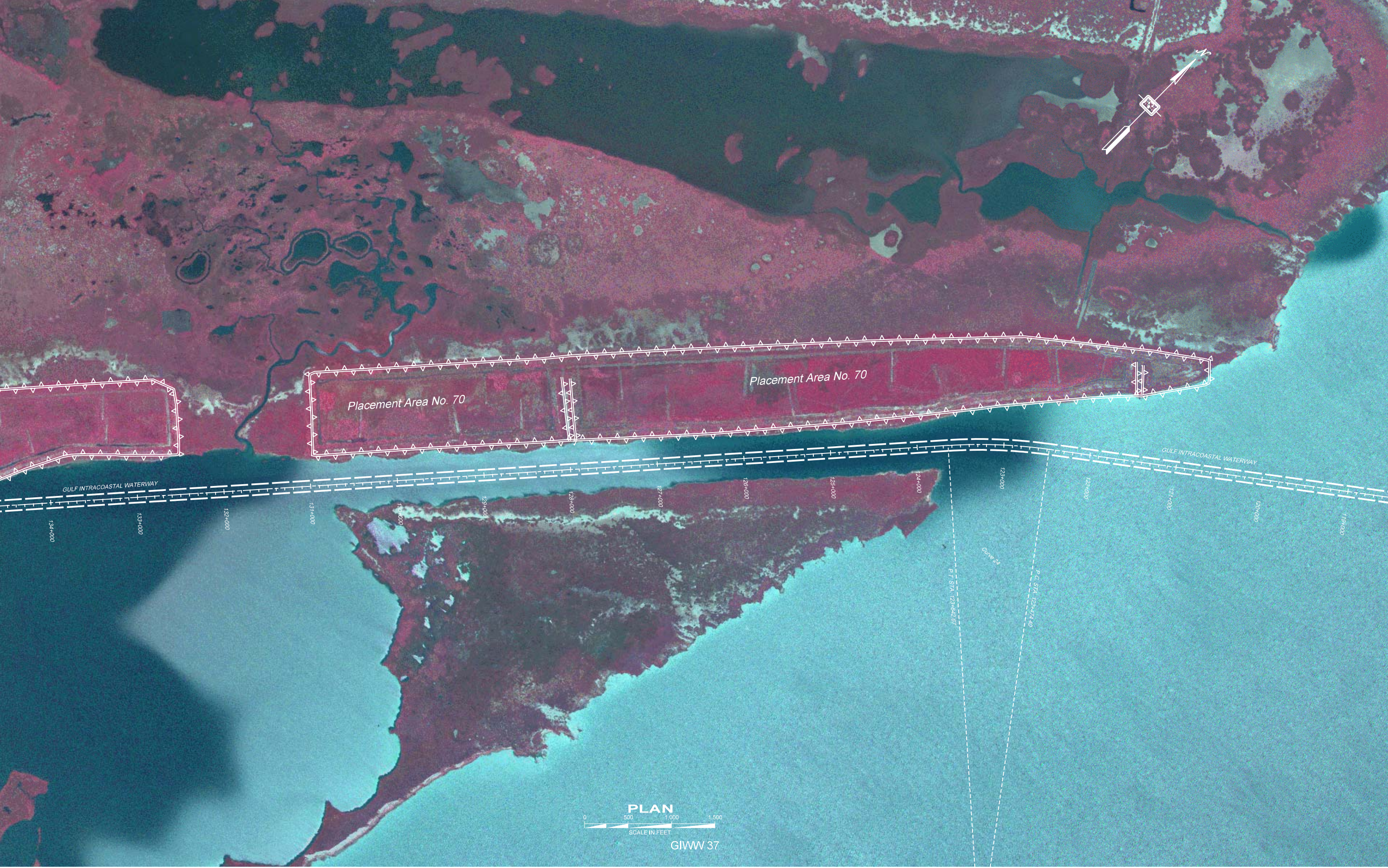
Placement Area No. 69

G.I.W.W. STA. 113+272.151 =
INT. C/L G.I.W.W. & EXT.
OF CHOC. BAYOU C/L
X = 3,233,763.750
Y = 503,008.652



GIWW 36

PLAN



Placement Area No. 70

Placement Area No. 70

GULF INTRACOASTAL WATERWAY

GULF INTRACOASTAL WATERWAY

134+000

133+000

132+000

131+000

130+000

129+000

128+000

127+000

126+000

125+000

124+000

Curve 23

P.T. STA. 123+62.87

P.C. STA. 122+74.40

123+000

122+000

121+000

120+000

119+000

PLAN



GIWW 37



Placement Area No. 72

Placement Area No. 71

GULF INTRACOASTAL WATERWAY

GULF INTRACOASTAL WATERWAY

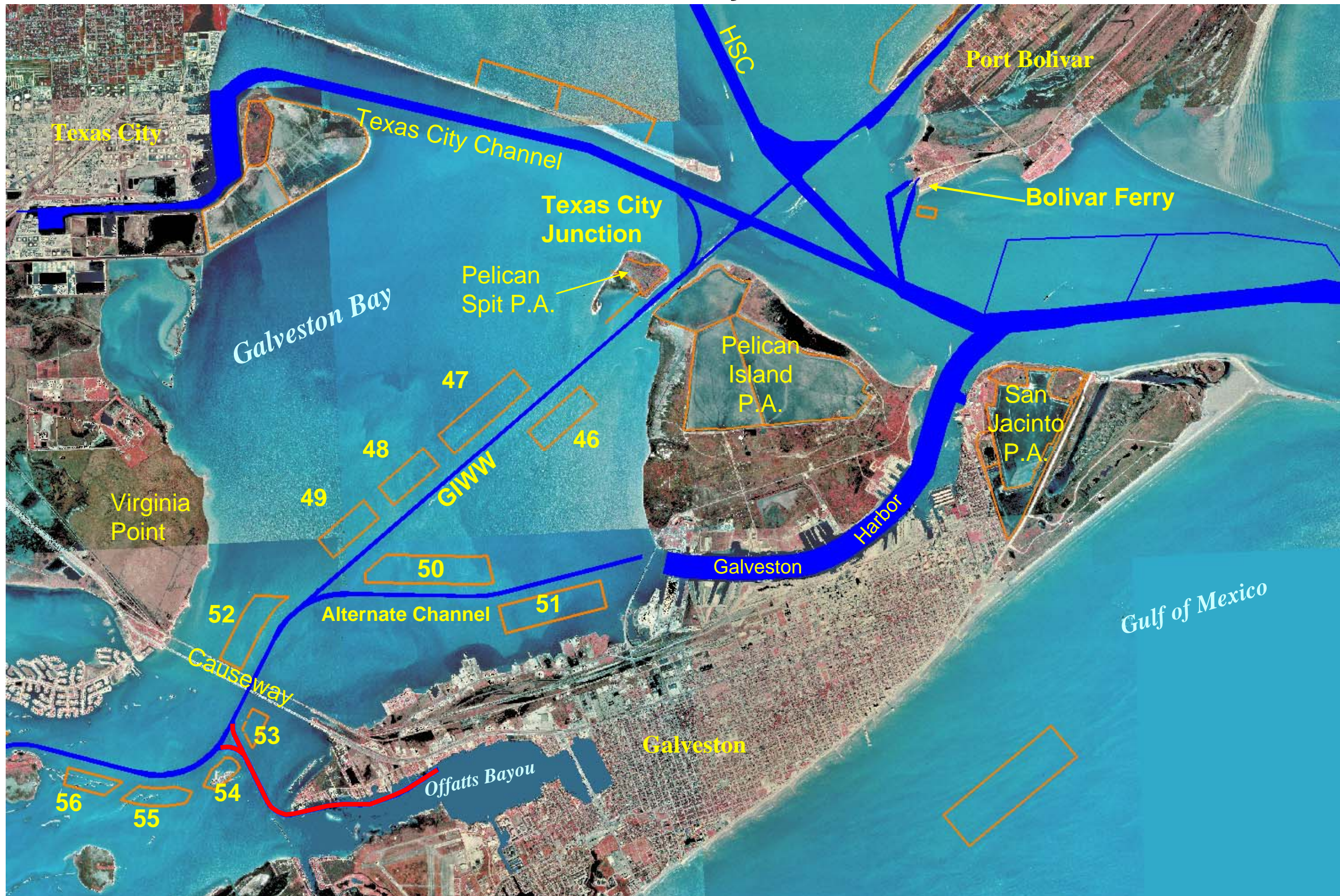
GULF INTRACOASTAL WATERWAY

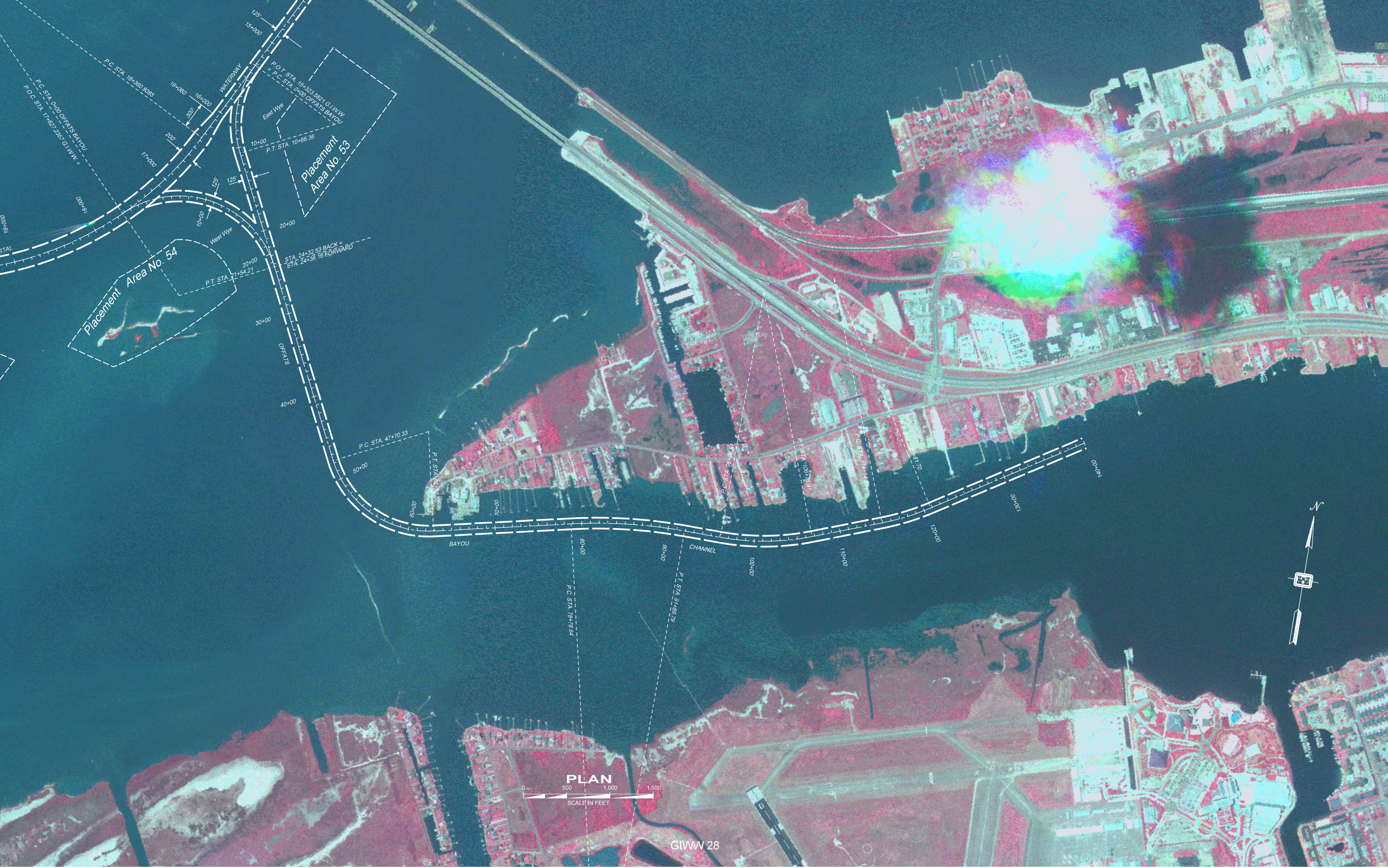




US Army Corps
of Engineers®
Galveston District

GIWW Tributaries Offatts Bayou





PLAN



SCALE IN FEET

GIWW 28