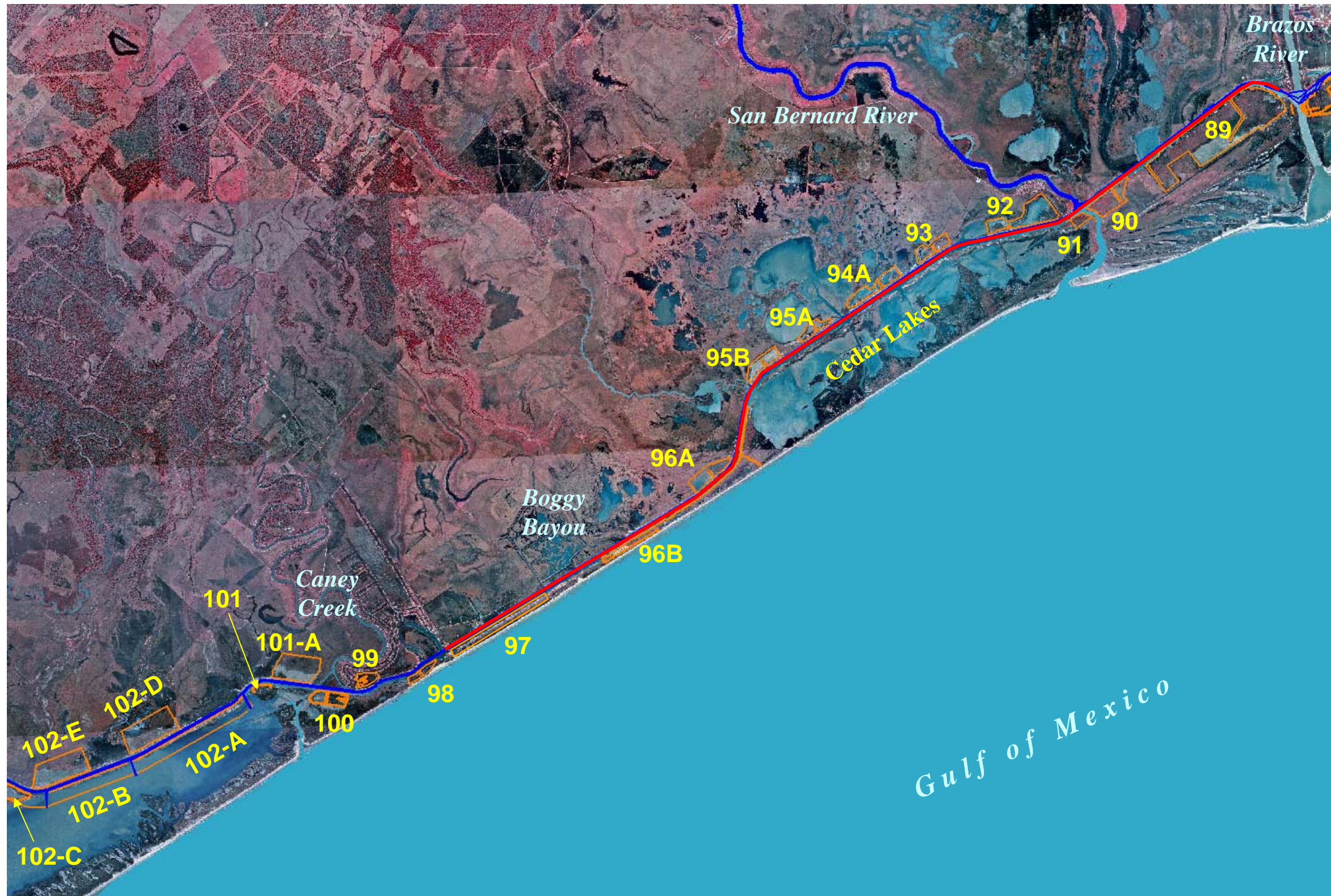
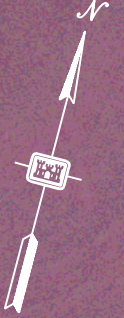




US Army Corps
of Engineers®
Galveston District

GIWW – Gulf Intracoastal Waterway Brazos River to FM-457





A No. 89

EQUATION
P.I. STA. 249+000 (BK)
S.T.A. 249+000
P.C. STA. 246+515

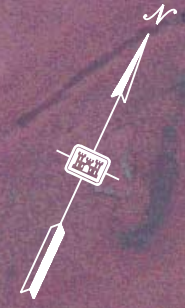
EQUATION
P.I. STA. 244+512 (BK)
P.I. STA. 244+143 (BK)

244+143
243+800
243+700
243+500
243+400
243+300
242+800
242+417

PLACEMENT AREA No. 88

PLACEMENT AREA No. 88

RIVER DISCHARGE CORRIDORS



40+00
30+00
P.T. STA. 26+54.08
CURVE No. 5
20+00
P.C. STA. 19+27.87
10+00
P.T. STA. 14+70.70
CURVE No. 2
P.C. STA. 7+16.53
P.T. STA. 6+70.75
CURVE No. 1A
P.C. STA. 19+27.87
CURVE No. 45

P.T. STA. 6+70.75
CURVE No. 1
P.C. STA. 10+00
P.T. STA. 14+70.70
CURVE No. 2
P.C. STA. 7+16.53
P.T. STA. 6+70.75
CURVE No. 1A
P.C. STA. 19+27.87
CURVE No. 45

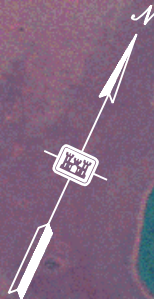
0+00 S.B.R. =
C.I.W.W. STA.
265+974.8488

PLACEMENT AREA No. 90

PLACEMENT AREA No. 2

PLACEMENT AREA No. 89

STA. 251+440
STA. 251+480
STA. 252+400
STA. 252+490
MOORING AREA
170.0'



PLACEMENT AREA No. 93



LIMITS OF LEVEL WORK

PLACEMENT AREA No. 92

PLACEMENT AREA No. 92

PLACEMENT

EQUATION:
 $279+971.71 BK =$
 $276+000 FWD$

CURVE
NO. 46

P.C. STA. 276+194

P.T. STA. 278+570

STA. 31+10

STA. 19+96

271+000

270+000

269+000

268+000

267+000

CURVE
NO. 45

P.T. STA. 267+498

P.C. STA. 268+346

P.T. STA. 267+165
CURVE
NO. 6

P.C. STA. 266+450
(CAL.M.N.)

P.T. STA. 264+707
CURVE
NO. 2

P.C. STA. 263+517

P.T. STA. 262+517
CURVE
NO. 3

P.C. STA. 261+517

P.T. STA. 260+517
CURVE
NO. 4

P.C. STA. 259+517

P.T. STA. 258+517
CURVE
NO. 5

P.C. STA. 257+517

P.T. STA. 256+517
CURVE
NO. 6

P.C. STA. 255+517

P.T. STA. 254+517
CURVE
NO. 7

P.C. STA. 253+517

P.T. STA. 252+517
CURVE
NO. 8

P.C. STA. 251+517

P.T. STA. 250+517
CURVE
NO. 9

PLAN
SCALE IN FEET
0 500 1,000 1,500







PLACEMENT AREA No. 96-A

CURVE NO. 49

P. I. STA. 305+864

P. C. STA. 304+864

CURVE NO. 48

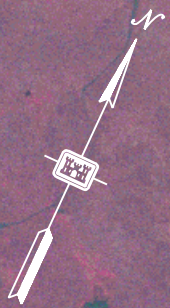
P. I. STA. 302+244

P. C. STA. 300+513

PLACEMENT AREA No. 96B

PLACEMENT AREA No. 96B

PLAN
0 500 1,000 1,500
SCALE IN FEET



CURVE
NO. 51

P.C. STA. 329+857
PT. STA. 330+728 913
330+000

328+000

328+000

327+000

326+000

325+000

324+000

323+000

322+000

321+000

320+000

319+000

318+000

317+000

316+000

315+000

PLACEMENT AREA No. 97

NO PLACEMENT DISCHARGE IN THIS AREA

CURVE
NO. 50

PT. STA. 330+451 0200

P.T. STA. 329+734

P.C. STA. 328+988

CURVE
NO. 52

P.T. STA. 330+451 0200

P.T. STA. 330+716 9880



PLAN
0 500 1,000 1,500
SCALE IN FEET

Placement Area No. 101-A

Placement Area No. 99

Placement Area No. 100

Placement Area No. 98

Placement Area No. 98-A

CURVE NO. 51

CURVE NO. 54

CURVE NO. 55

CURVE NO. 52

DISCHARGE CORRIDOR