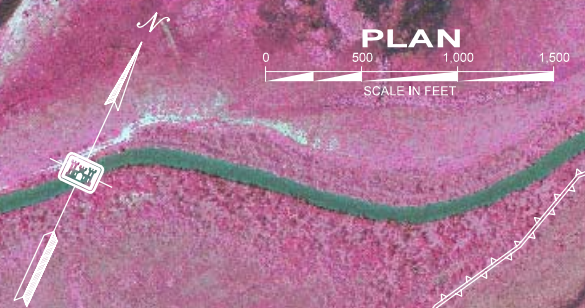




GIWW – Gulf Intracoastal Waterway Colorado River to Upper Matagorda Bay





BAXTER ISLAND
PLACEMENT AREA

BAXTER ISLAND

EQUATION:
125 STA 458+75.6(P/MO) =
STA 459+003.57 BK

Placement Area
No. 108

Placement Area No. 3

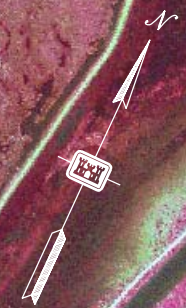
COLORADO RIVER DIVERSION CHANNEL

THIS AREA
AVAILABLE FOR
BYPASS ROUTE

BY-PASS CHANNEL

BY-PASS CHANNEL

PLAN
SCALE IN FEET
0 500 1000 1500



No. 110

CURVE
NO. 70

Placement Area
No. 109

Placement Area
No. 109

Placement Area
No. 108-A

GULF INTRACOASTAL WATERWAY

EQUATION
STA 478+381.18 (FWD)
STA 472+637.50 (BK)

CURVE
NO. 69

P.I. STA 464+427.68
P.I. STA 468+409.82

P.I. STA 470+882.14

P.C. STA 468+436.37

PLAN
SCALE IN FEET
0 500 1,000 1,500



GULF INTRACOASTAL WATERWAY

Placement Area No. 111

Placement Area No. 110

Placement Area No. 110

CURVE NO. 72

CURVE NO. 71

P.C. STA. 489+163.64

P.T. STA. 491+508.97

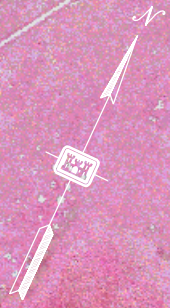
P.C. STA. 485+406.12

P.C. STA. 481+260.37

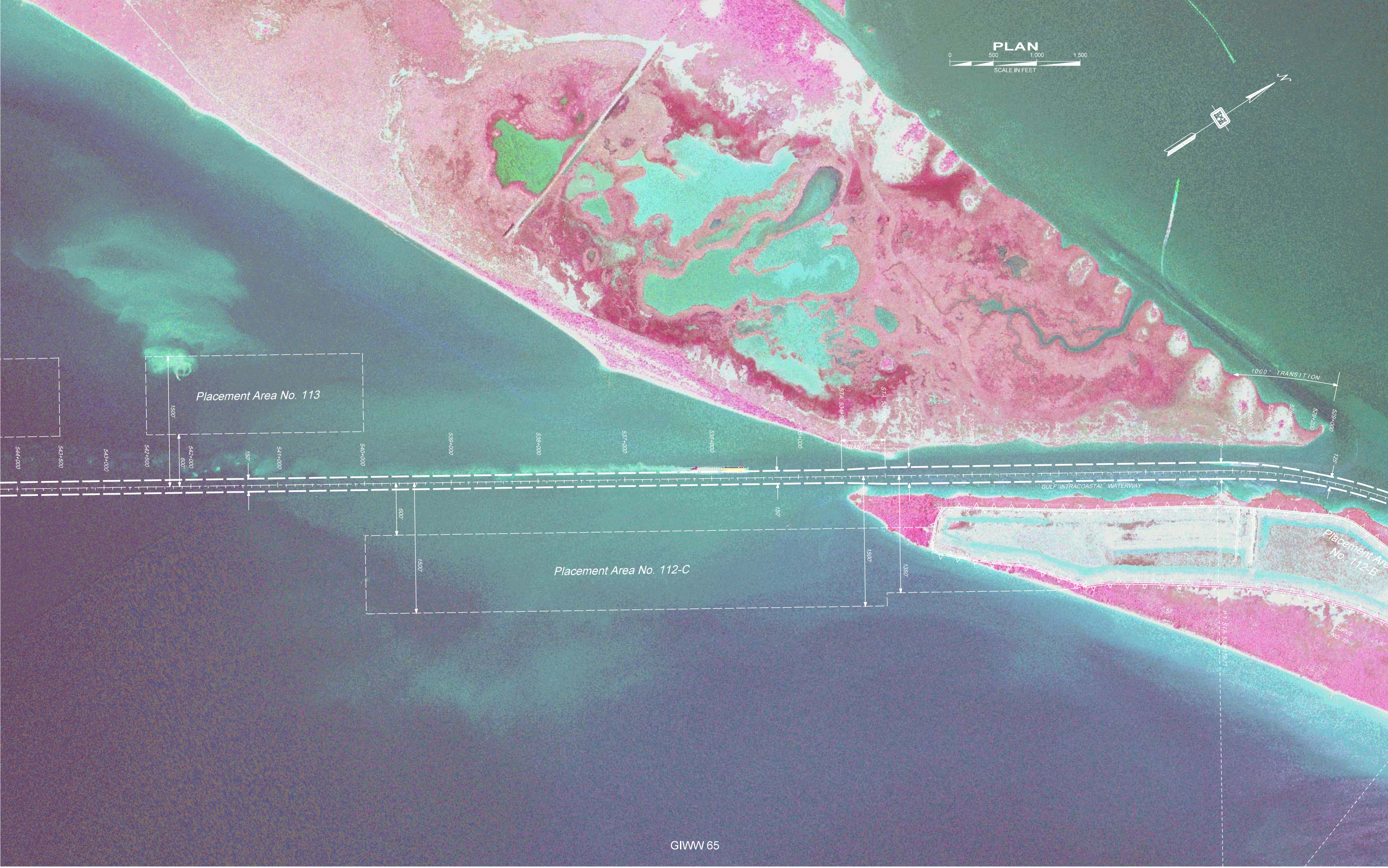
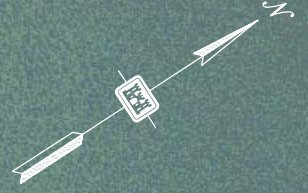
P.T. STA. 483+682.96

P.T. STA. 484+427.69

PLAN
SCALE IN FEET
0 500 1000 1500







Placement Area No. 113

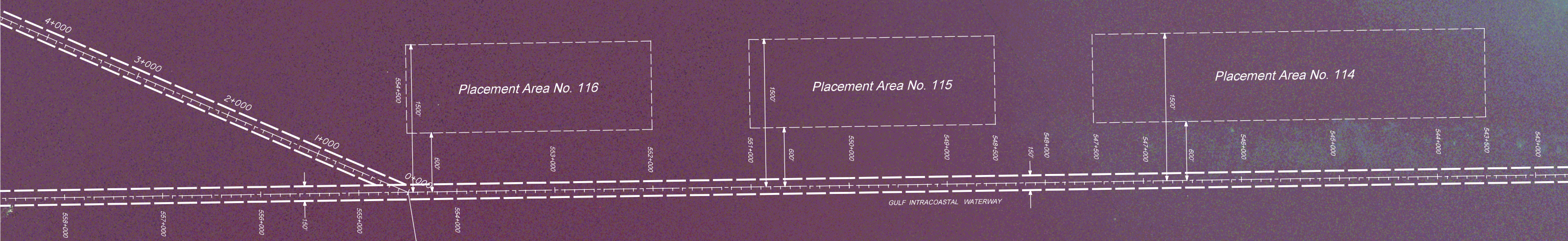
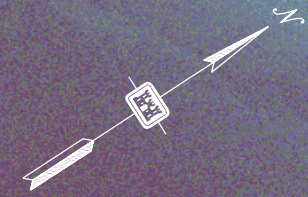
Placement Area No. 112-C

Placement Area No. 112-B

GULF INTRACOASTAL WATERWAY

CURVE NO. 16

P.T. STA. 534+19.71



STA 554+500 (GIWW) =
 0+000 (RELL GIMMENT)
 X = 2,270,322.5340
 Y = 78,345
 LON = 92-114