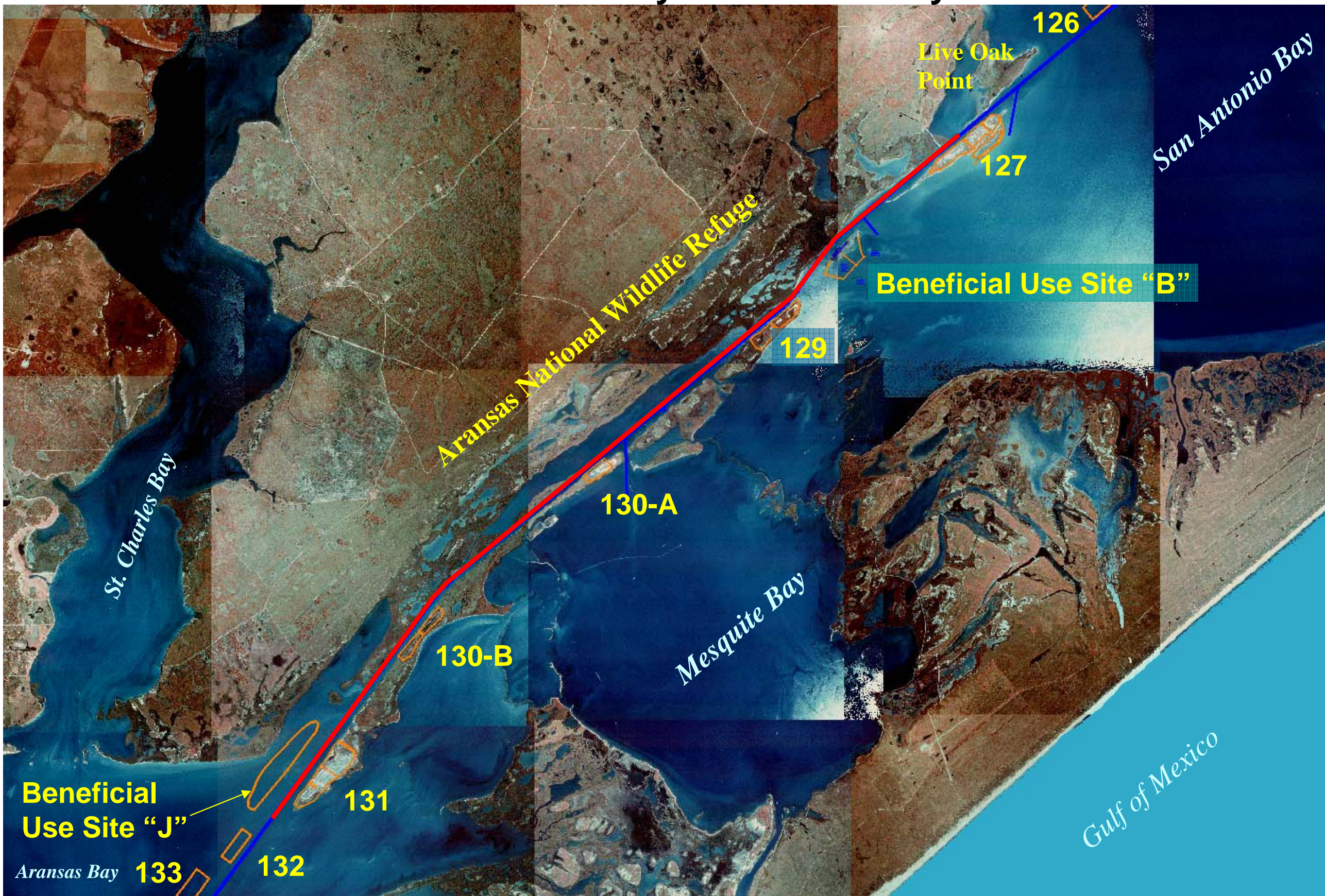




US Army Corps
of Engineers®
Galveston District

GIWW – Gulf Intracoastal Waterway San Antonio Bay to Aransas Bay





PLAN
SCALE IN FEET



807+000 806+000 805+000 804+000 803+000 802+000 801+000 800+000 799+000 798+000 797+000 796+000 795+000 794+000 793+000

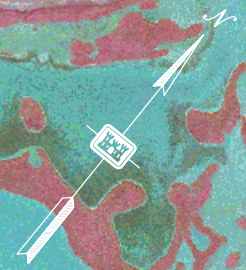
PLACEMENT AREA NO. 129

P.T. STA. 793+205.4930

P.C. STA. 791+616.08

ILCO CHANNEL

PLAN
0 500 1,000 1,500
SCALE IN FEET



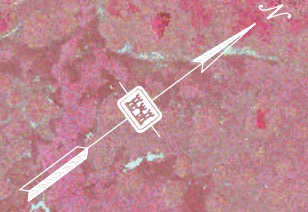
822+000 821+000 820+000 819+000 818+000 817+000 816+000 815+000 814+000 813+000 812+000 811+000 810+000 809+000 808+000 807+000

Y=226.67
X=107.25
P.C. S 820+346.90

P.T. STA. 821+166.020
P.C. STA. 820+346.900

SKELLY OIL CO CHANNEL

PLAN
0 500 1,000 1,500
SCALE IN FEET



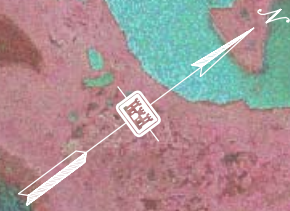
NEFICIAL USE SITE "J"

836+000 834+000 833+000 832+000
GULF INTRACOASTAL WATERWAY
829+000 828+000 827+000 826+000 825+000 824+000 823+000 822+000 821+000

PLACEMENT AREA NO. 131

P.T. STA. 821+766.123

P.C. STA. 820



PLACEMENT AREA NO. 133

PLACEMENT AREA NO. 132

BENEFICIAL USE SITE "J"

GULF

PLACEMENT

