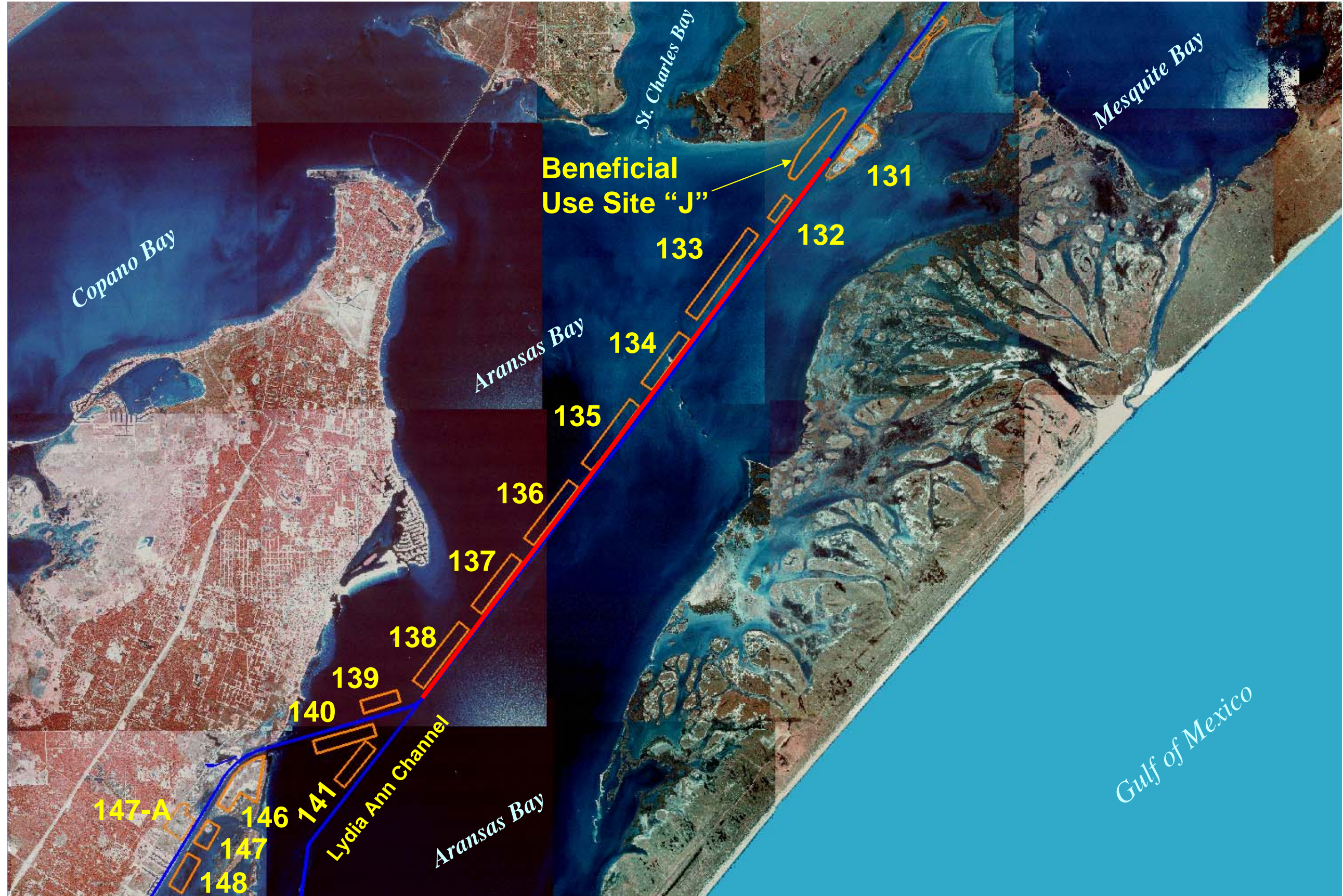




US Army Corps  
of Engineers®  
Galveston District

# GIWW – Gulf Intracoastal Waterway Across Aransas Bay





PLACEMENT AREA NO. 133

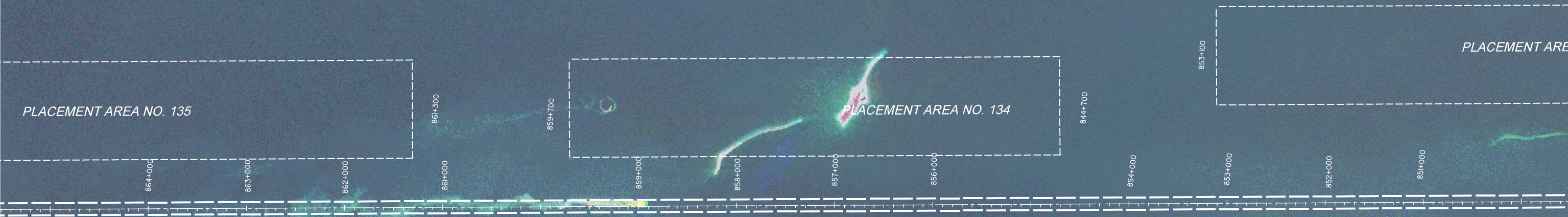
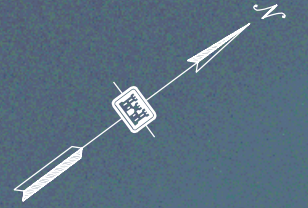
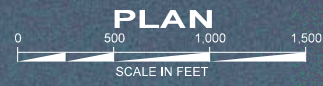
PLACEMENT AREA NO. 132

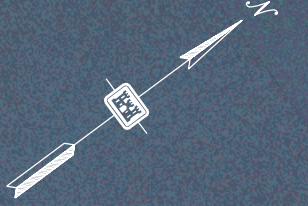
BENEFICIAL USE SITE "J"

GULF

PLACEMENT







AREA NO. 137

AREA NO. 137

PLACEMENT AREA NO. 136

PLACEMENT AREA NO. 135

879+000

878+000

877+000

876+800

876+000

875+200

874+000

874+000

873+000

872+000

871+000

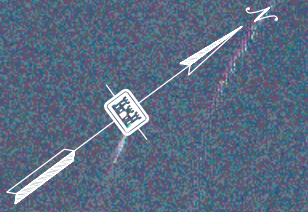
869+400

867+700

866+000

864+000

X=2459.632, Y=30



PLACEMENT AREA  
NO. 139

884+000  
885+000  
882+000  
881+000

P.I. STA. 888+198.11  
P.D.M. 1/4"

P.D.M. 1/4"

P.C. STA. 889+500  
P.T. STA. 889+500

PLACEMENT AREA NO. 138

889+000  
888+000  
887+000  
886+000  
884+000  
883+600

PLACEMENT AREA NO. 137

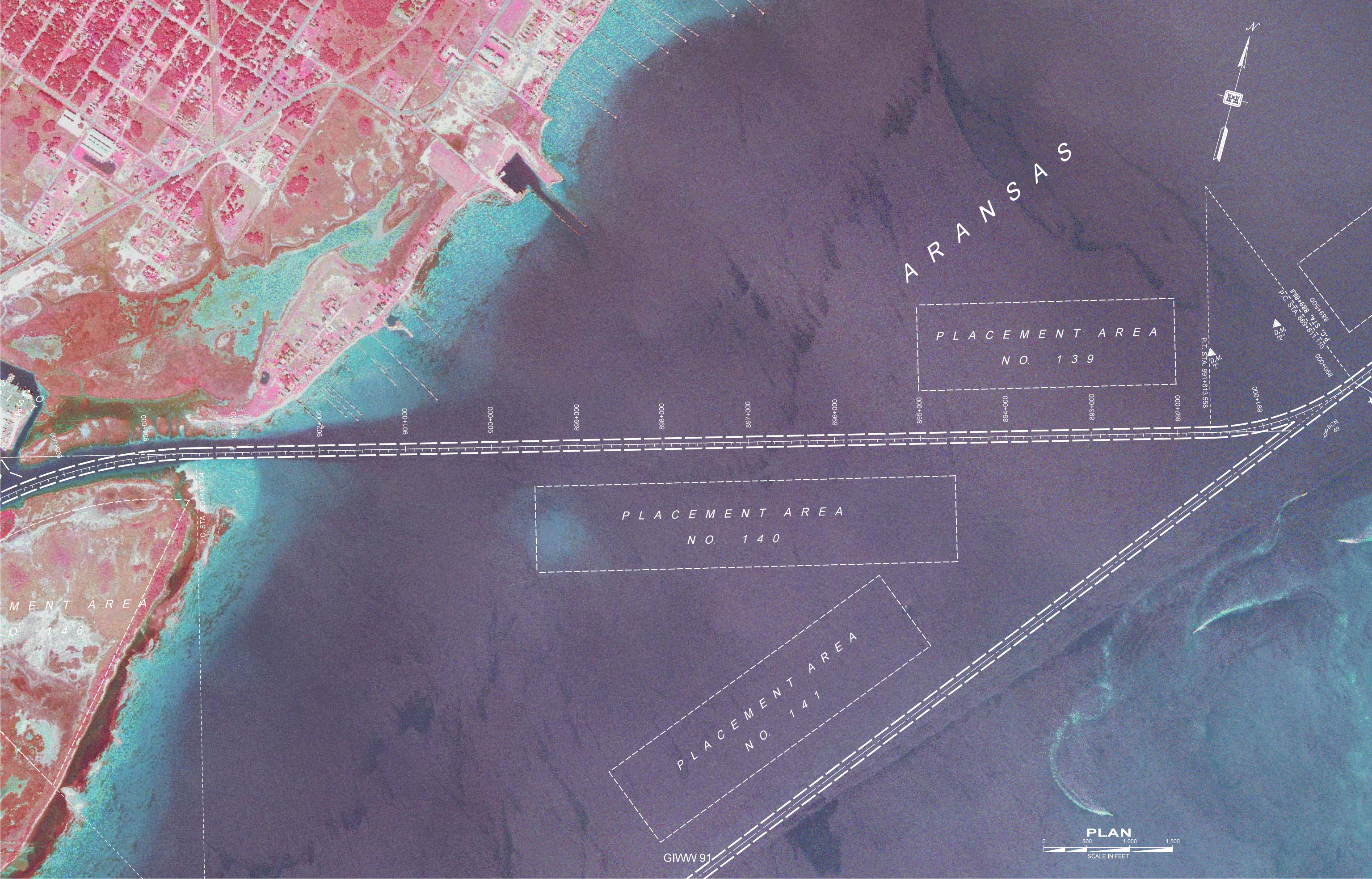
PLACEMENT AREA NO. 137

882+000  
881+000  
879+000  
878+000

BCN 1/4"

X=2475.093, 880  
Y=551233.803

Texas South Central  
MD&T 60-26237035-04, 61076-353  
MD&T 60-2625155-5559191, 990518, 31793  
Texas South  
MD&T 60-2627569-28974, 882004, 04487  
MD&T 60-41394, 1619, 1726262, 322, 31793



ARANSAS

PLACEMENT AREA  
NO. 139

PLACEMENT AREA  
NO. 140

PLACEMENT AREA  
NO. 141

PLACEMENT AREA  
NO. 146



GIWW 91

P.T. STA. 891+613.598  
D.M. 1/2"  
P.C. STA. 899+467.770  
P.C. STA. 899+467.770  
P.C. STA. 899+467.770  
P.C. STA. 899+467.770

905+000  
904+000  
903+000  
902+000  
901+000  
900+000  
899+000  
898+000  
897+000  
896+000  
895+000  
894+000  
893+000  
892+000  
891+000