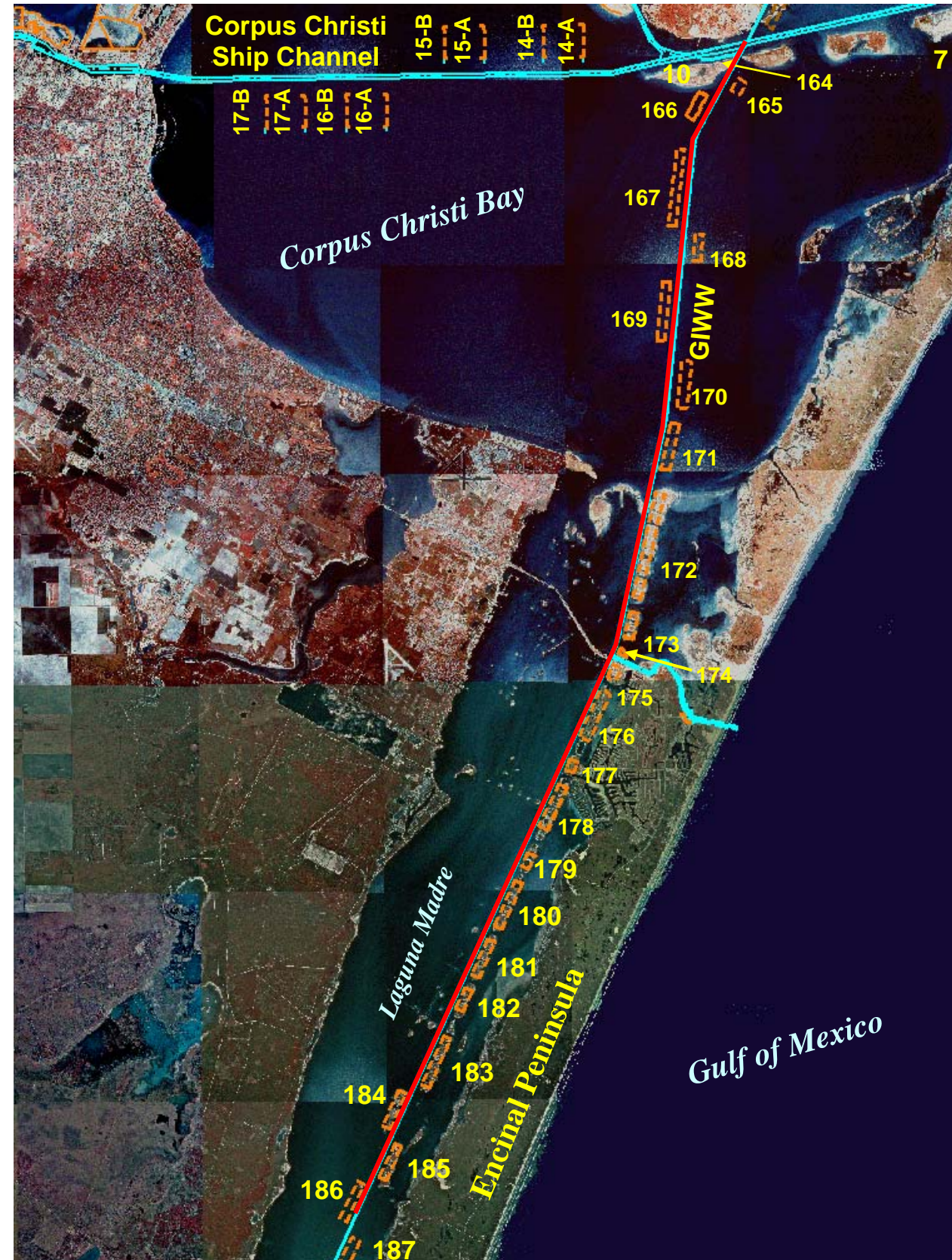
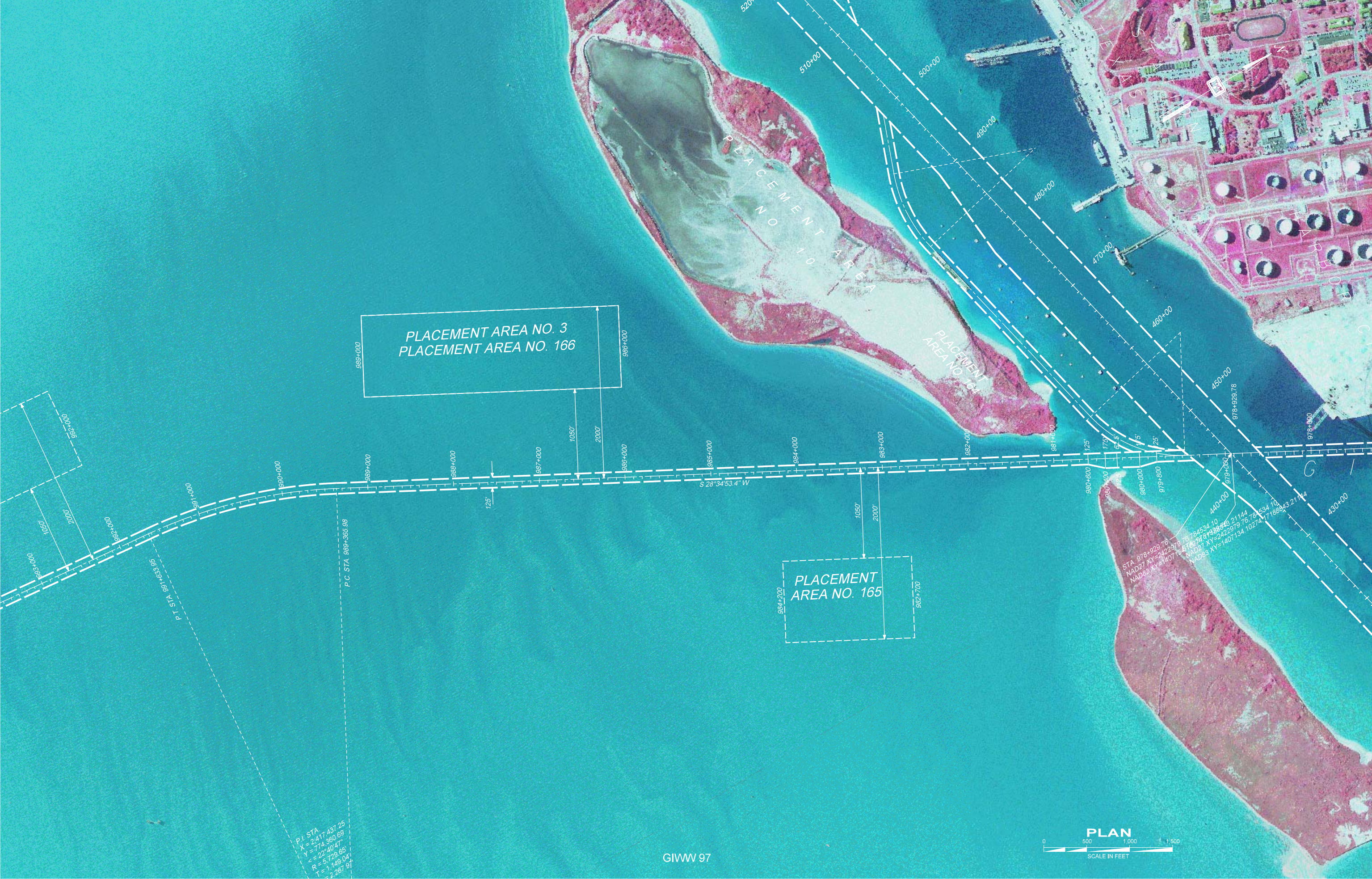




US Army Corps
of Engineers®
Galveston District

GIWW – Gulf Intracoastal Waterway Corpus Christi Ship Channel to South Bird Island





PLACEMENT AREA NO. 3
PLACEMENT AREA NO. 166

PLACEMENT AREA NO. 165

S 28°34'53.4" W

P.I. STA. 984+00
X = 2,417.437 25
Y = 774.360 69
C = 22°40'47"
R = 5,729.66'
T = 1,149.04'
L = 2,267.91'

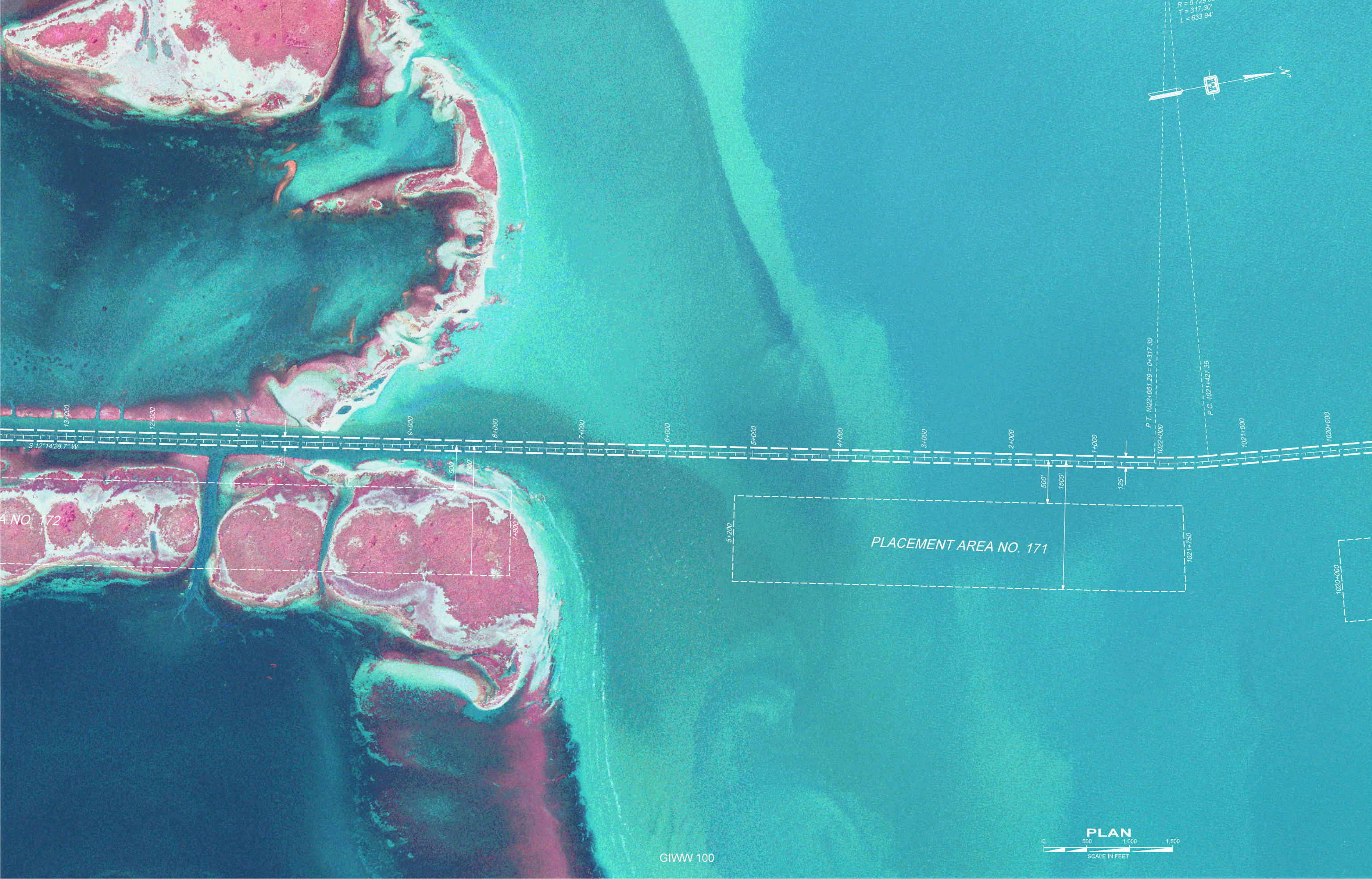
P.C. STA. 989+365.98

P.T. STA. 984+365.98

STA. 978+929.76
NAD83 XY = 2422979.76, 784534.10
NAD83 XY = 1407134.10, 10274.718884321144
NAD83 XY = 2422979.76, 784534.10
NAD83 XY = 1407134.10, 10274.718884321144



PLAN



R = 5,173'
T = 317.30'
L = 633.94'



P.T. 1022+061.29 = 0+317.30

P.C. 1021+427.35

S 12°14'28.7\"/>

PLACEMENT AREA NO. 172

PLACEMENT AREA NO. 171



PLAN

GIWW 100



128+000
27+000
26+000
25+000
24+000
23+000
22+000
21+000
20+000
19+000
18+000
17+000
16+000
15+000
14+000
13+000
12+000

GIWW STA. 26+312.99
PACKERY STA. 10+00
P.T. STA. 25+041.28
P.C. STA. 23+813.67

500'
1500'
500'
1500'
125'
500'
1500'

PLACEMENT AREA NO. 174
PLACEMENT AREA NO. 173
PLACEMENT AREA NO. 172

S 12°14'28.7" W

GIWW 101





41+000 40+000 39+000 38+000 37+000 36+000 35+000 34+000 33+000 32+000 31+000 30+000 29+000 28+000 27+000 26+000

1500 500 1500 125
41+300 39+700 38+300
PLACEMENT AREA NO. 177

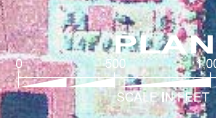
500 1500 125
35+700
PLACEMENT AREA NO. 176

1500 500 1500 125
28+500 27+100 25+700
PLACEMENT AREA NO. 175

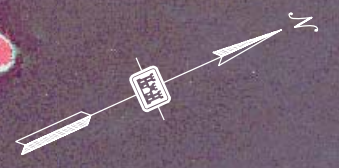
GIWM'S PACKER

PROJECT CHANNEL

0 5 10 15 20 25 30 35 40 45 50 55 60



AREA NO. 180 - A



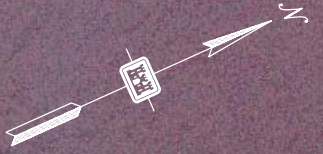
S 24°31'02.6" W

AREA NO. 180

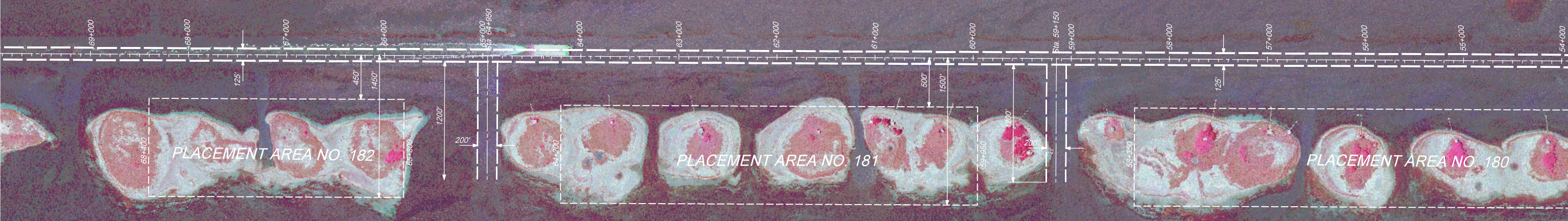
PLACEMENT AREA NO. 179

PLACEMENT AREA NO. 178



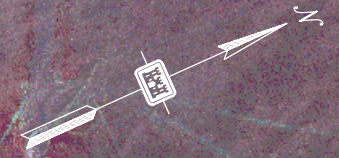


PLACEMENT AREA NO. 180 - A



PLACEMENT AREA NO. 182 - SOUTH





PLACEMENT AREA NO. 184

PLACEMENT AREA NO. 183

PLACEMENT AREA NO. 182 - SOUTH

83+300

83+000

82+000

81+000

80+000

79+000

78+000

77+000

76+000

75+000

74+000

73+000

72+000

71+000

70+000

69+000

68+000

67+000

125'

S 24°31'02.6" W

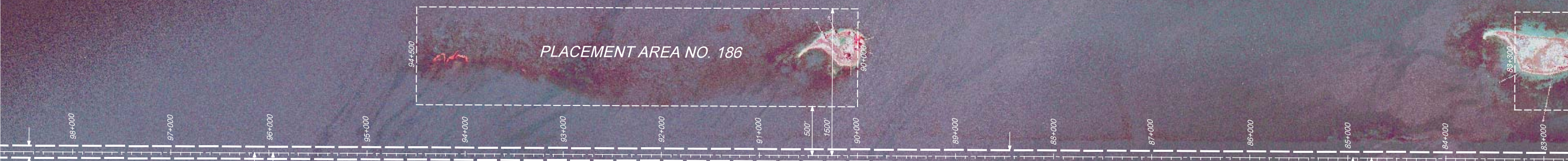
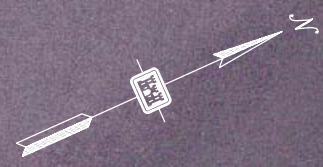
500'

1500'

71+600

68+400





S 24°31'02.6" W

