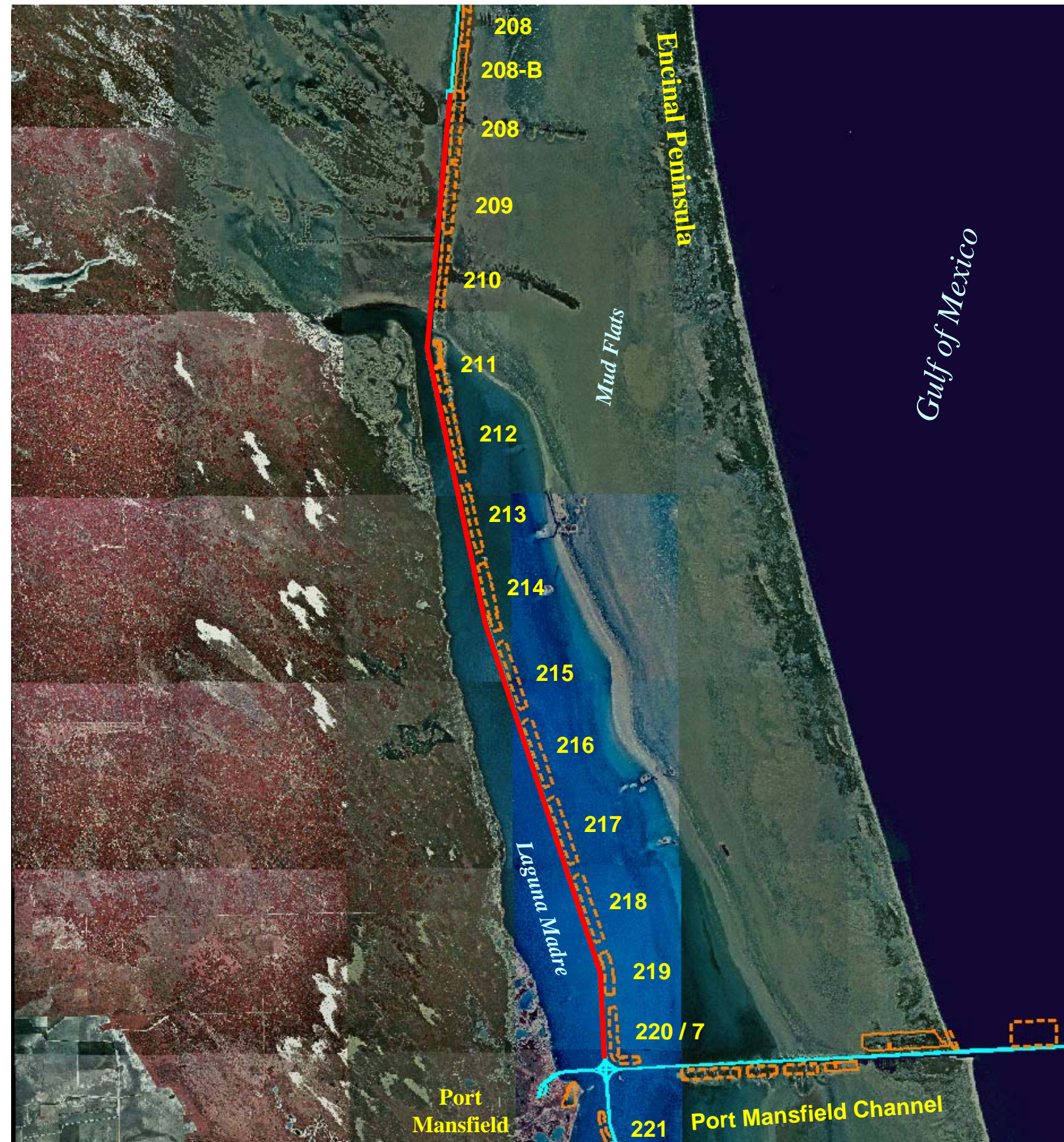
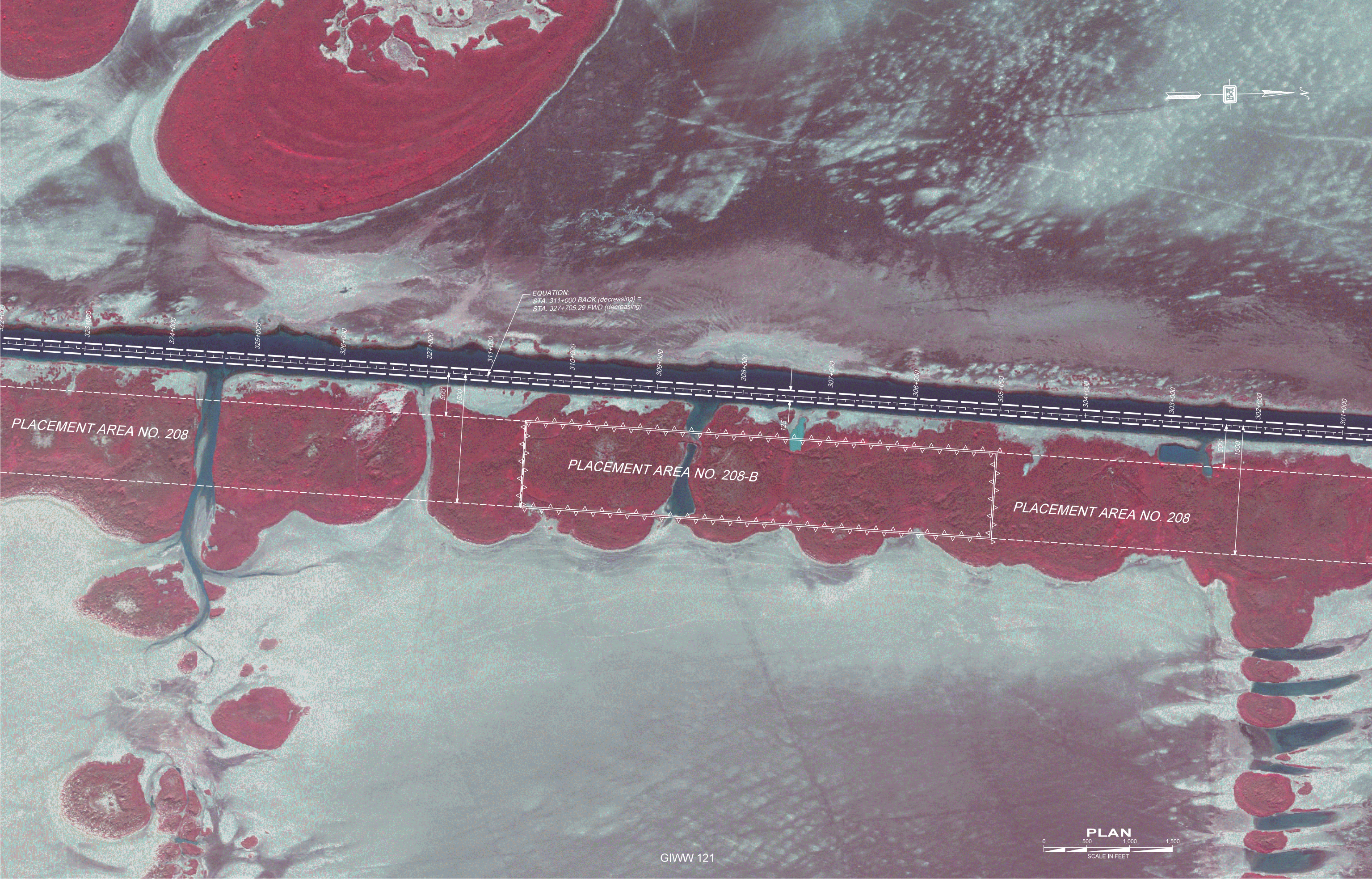




US Army Corps  
of Engineers®  
Galveston District

# GIWW – Gulf Intracoastal Waterway Banderia Island to Port Mansfield



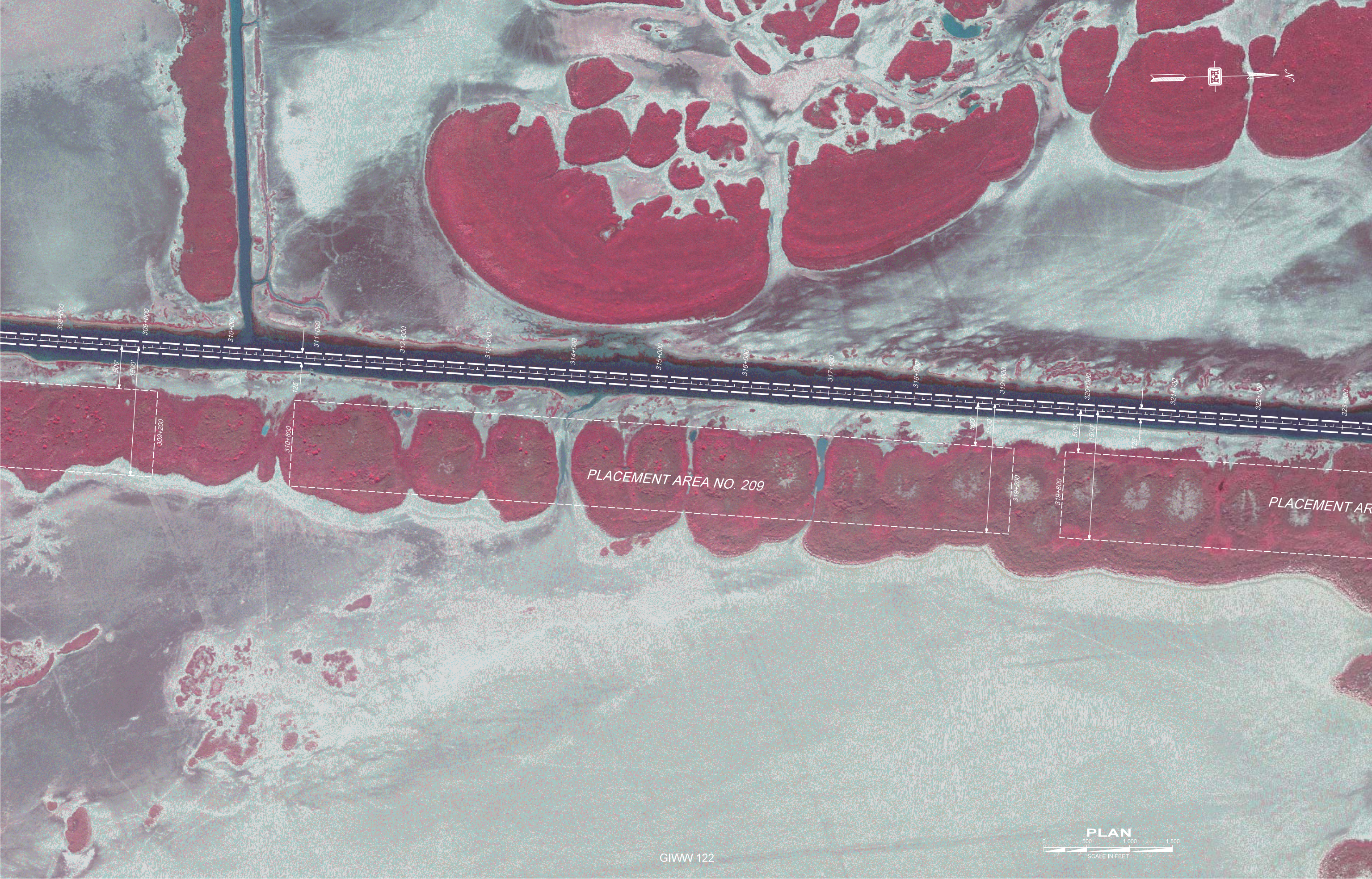


EQUATION:  
STA. 311+000 BACK (decreasing) =  
STA. 327+705.29 FWD (decreasing)

PLACEMENT AREA NO. 208

PLACEMENT AREA NO. 208-B

PLACEMENT AREA NO. 208



PLACEMENT AREA NO. 209

PLACEMENT AR

308+000 309+000 310+000 311+000 312+000 313+000 314+000 315+000 316+000 317+000 318+000 319+000 320+000 321+000 322+000 323+000





PLACEMENT AREA NO. 211

PLACEMENT AREA NO. 210

CURVE NO. 10

P.C. STA. 295+362.63

P.T. STA. 297+104.37

P.I. STA. 296+240.08

GIWW 123

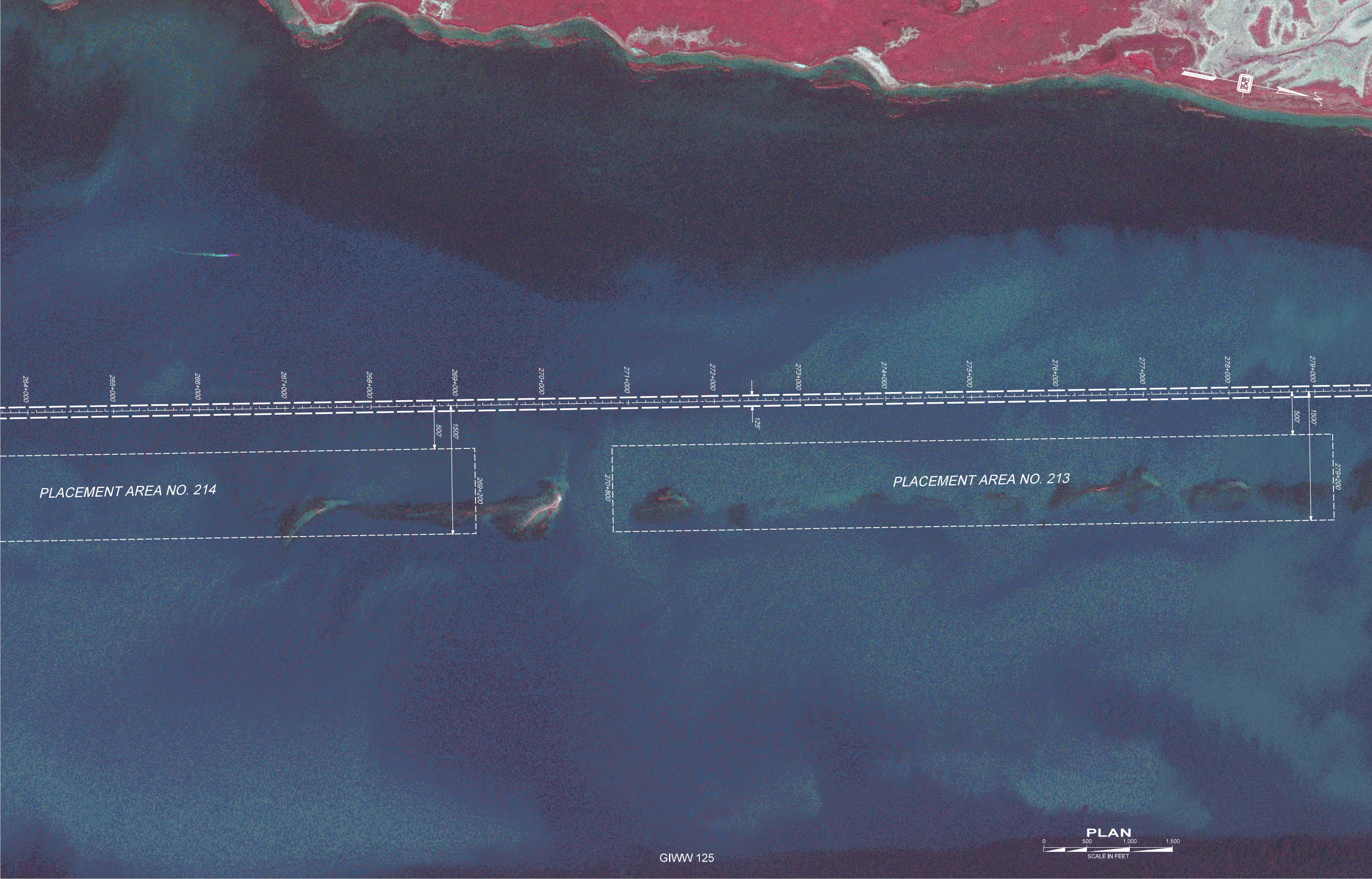
PLAN  
0 500 1,000 1,500  
SCALE IN FEET



PLACEMENT AREA NO. 212

PLACEMENT AREA NO. 211





264+000

265+000

266+000

267+000

268+000

269+000

270+000

271+000

272+000

273+000

274+000

275+000

276+000

277+000

278+000

279+000

PLACEMENT AREA NO. 214

1500'

500'

269+200

270+800

125'

PLACEMENT AREA NO. 213

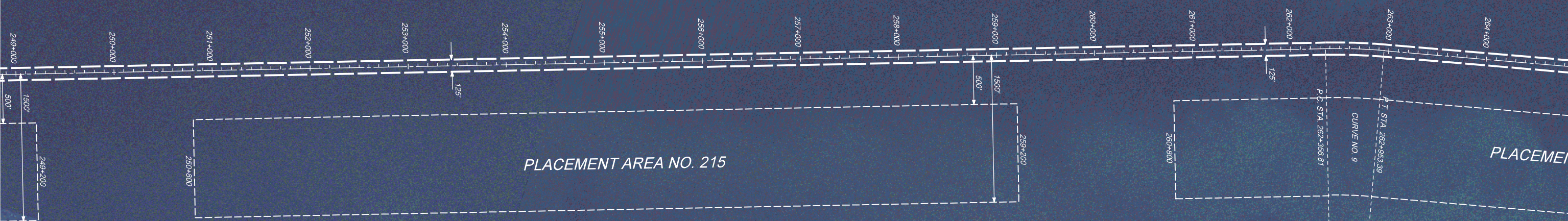
1500'

500'

279+200



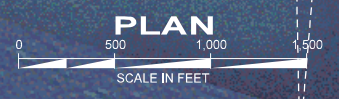
PLAN

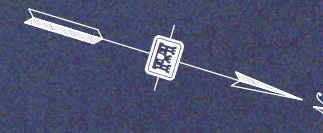


PLACEMENT AREA NO. 215

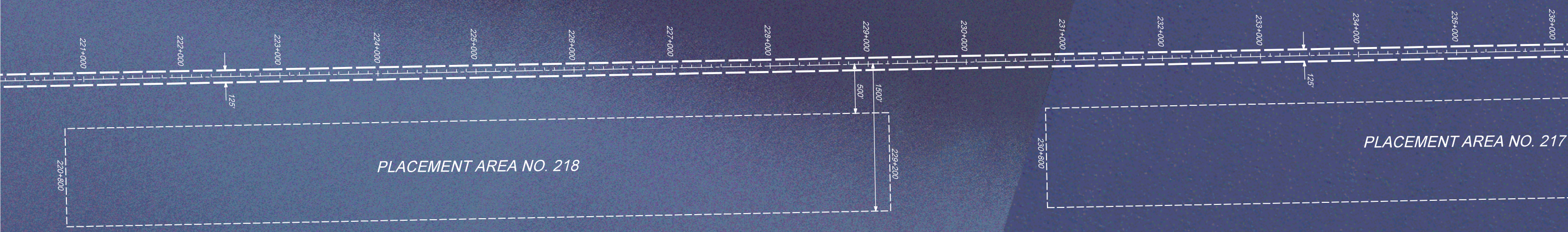
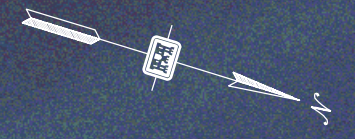
PLACEMENT AREA NO. 9

P.C. STA. 262+356.81  
T.I. STA. 263+953.89  
CURVE NO. 9











P.C. STA. 0+022.60 =  
STA. 206+933.91 (G.L.W.V.) 207+000  
I = 90°36'01"  
D = 03'03.49"

P.T. STA. 44+235.61  
I = 89°24'21"  
D = 03'00.02"

P.I. STA. 218+100.46  
P.C. STA. 216+635.85  
CURVE NO. 8

PLACEMENT AREA NO. 220

PLACEMENT AREA NO. 219



