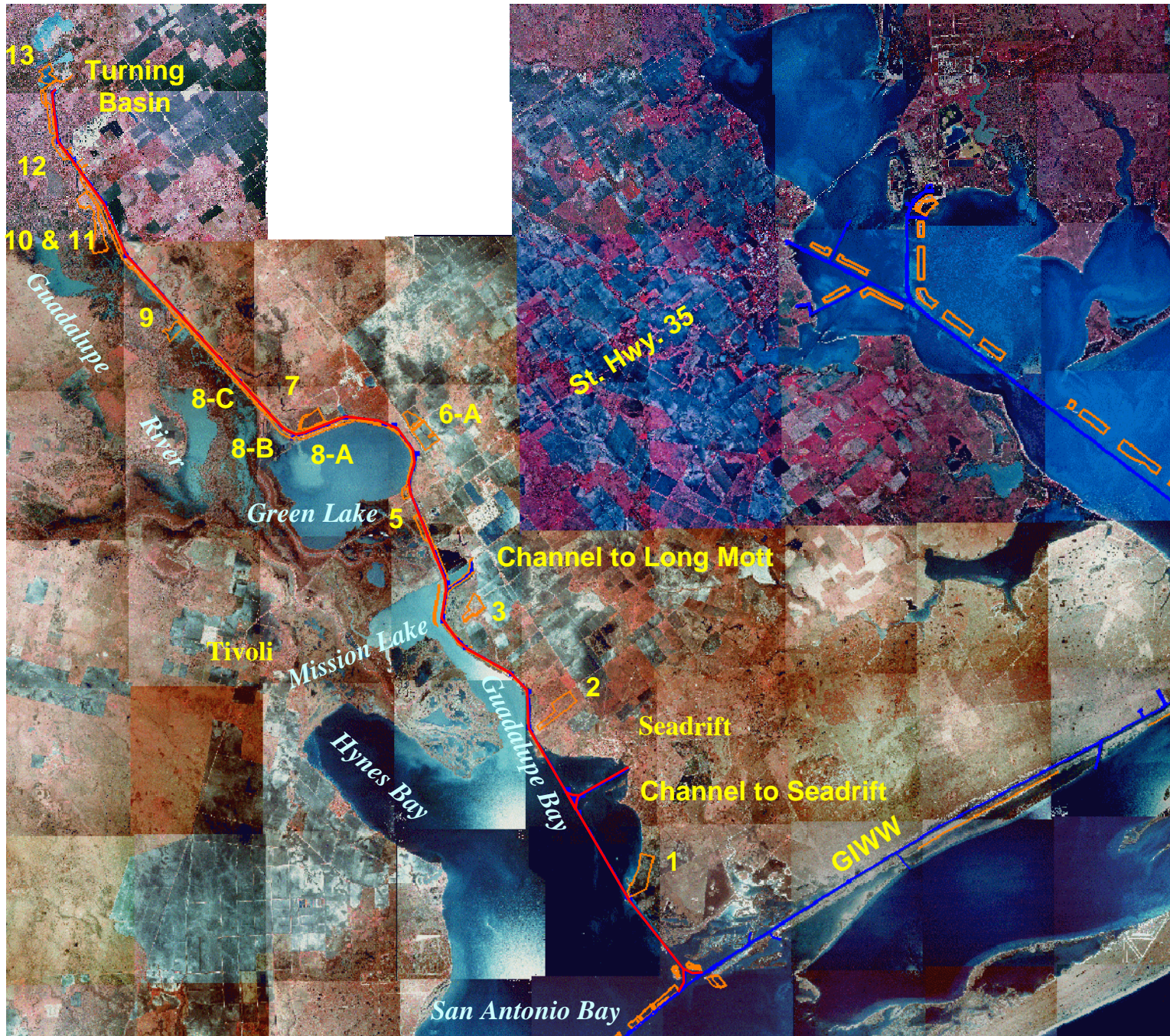




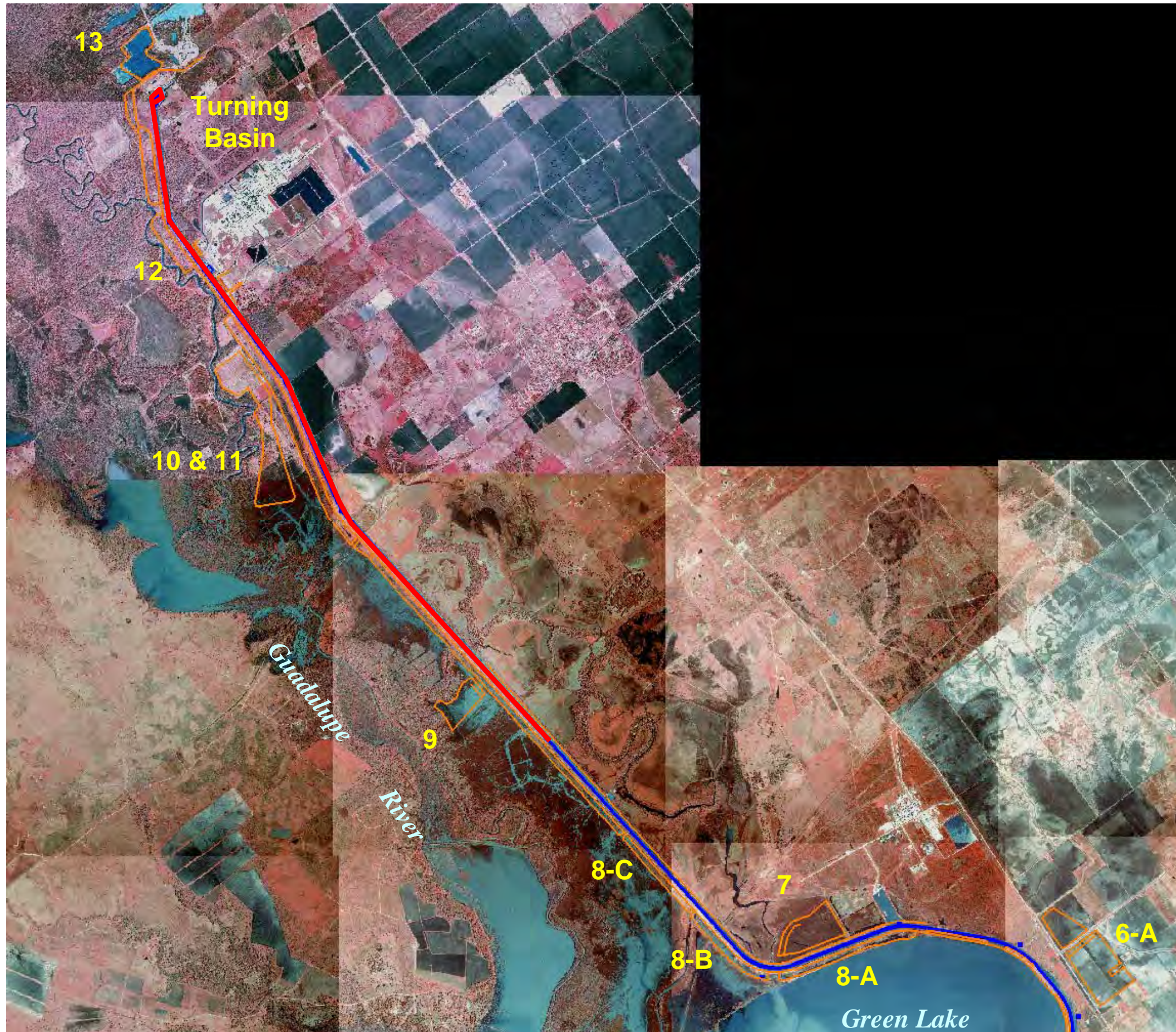
# GIWW Tributaries Channel to Victoria





US Army Corps  
of Engineers®  
Galveston District

# GIWW Tributaries Channel to Victoria – Upper Reach



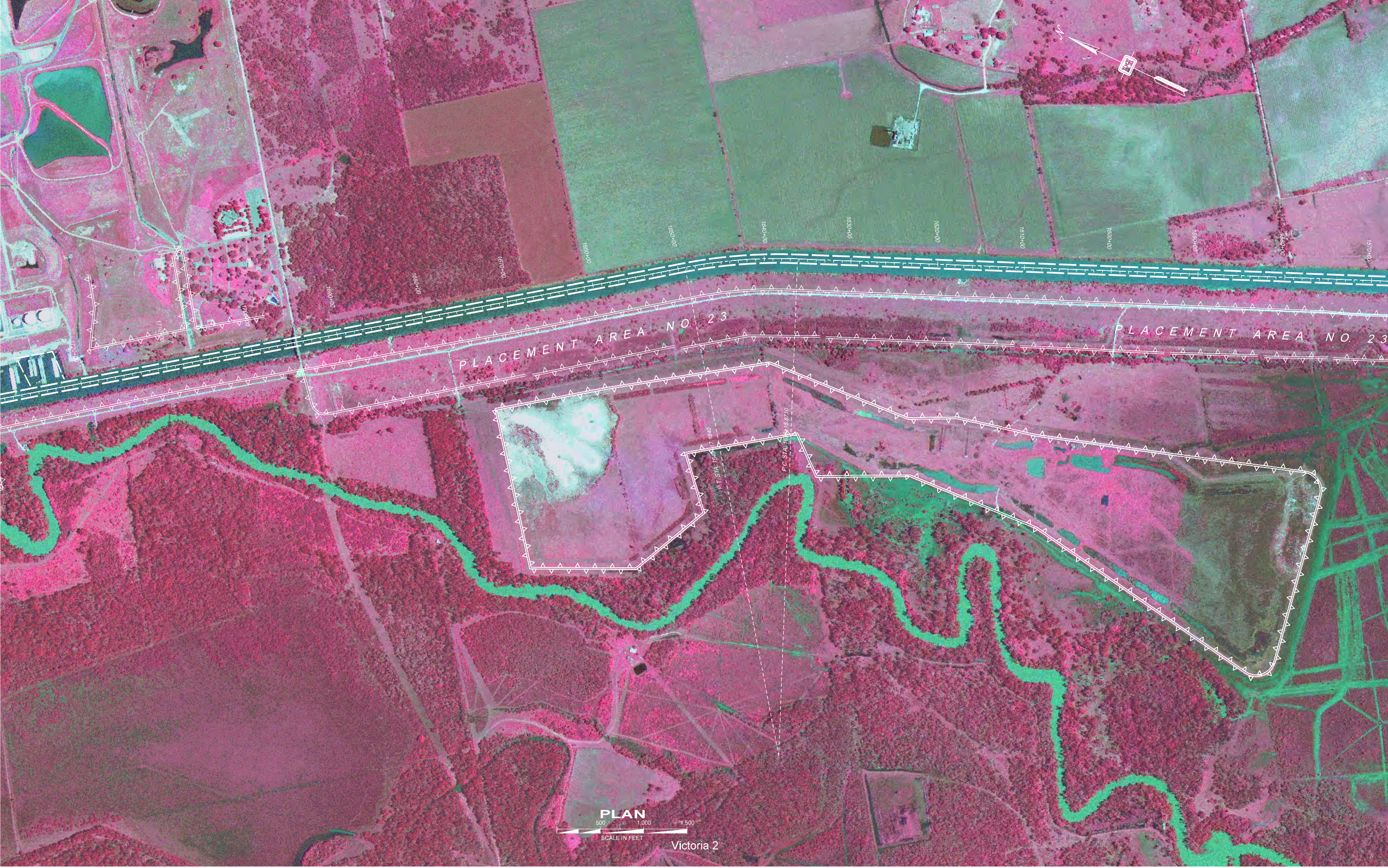


PLACEMENT AREA NO. 24-A

PLACEMENT AREA NO. 24



Victoria 1



PLACEMENT AREA NO. 23

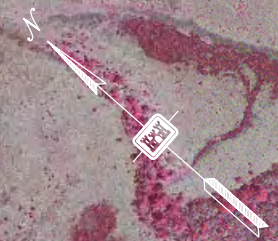
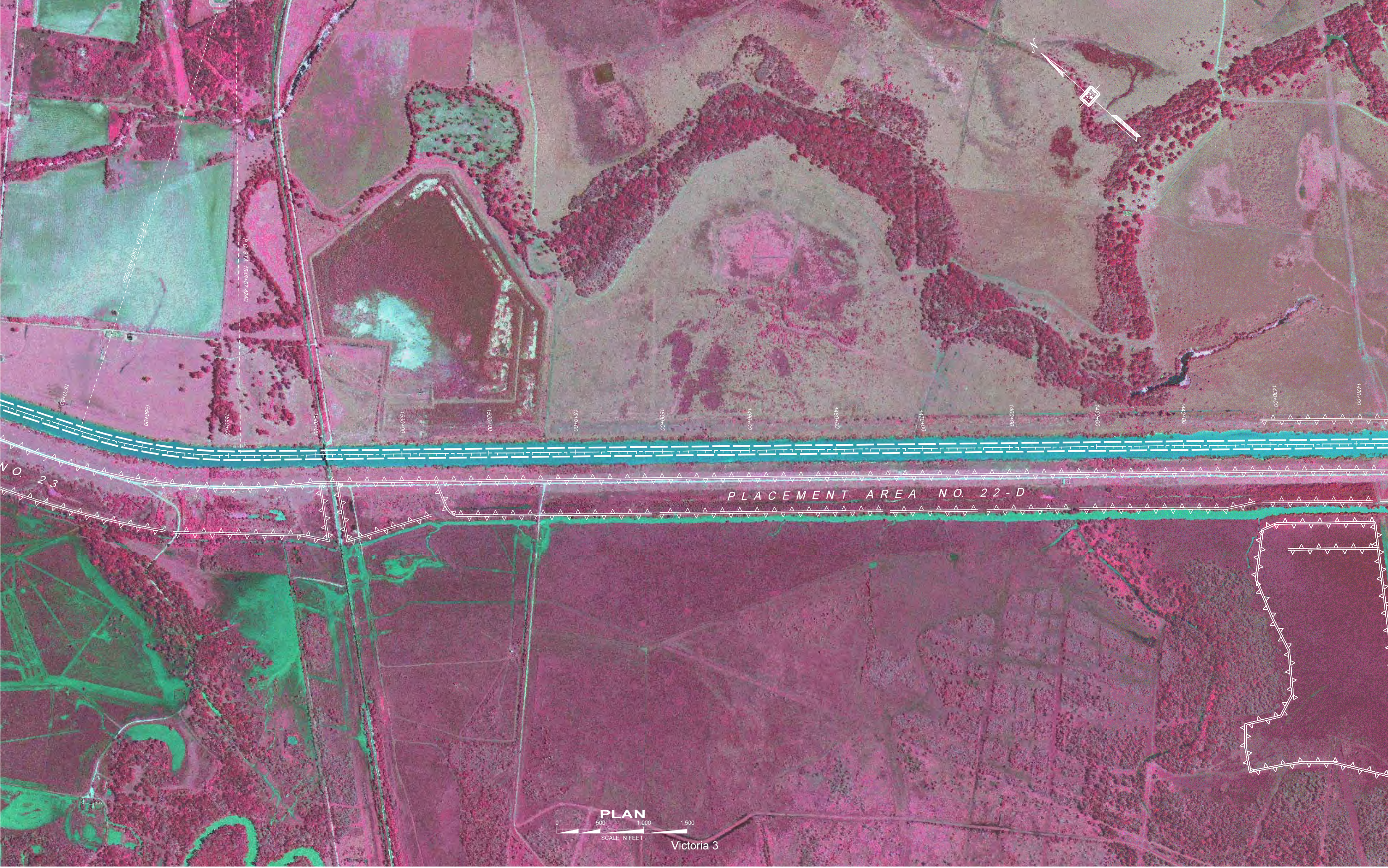
PLACEMENT AREA NO. 23

P.T. STA. 16251.71840

P.C. STA. 16251.71870

PLAN  
0 500 1,000 1,500  
SCALE IN FEET

Victoria 2



P.C. STA. 1518+47.420  
D.B. ON 1581.155 L.S.L.

1570+00  
1580+00  
1590+00

1530+00  
1520+00

1510+00  
1500+00  
1490+00  
1480+00  
1470+00

1460+00  
1450+00  
1440+00

1430+00  
1420+00

PLACEMENT AREA NO. 22-D

NO 23



PLAN

SCALE IN FEET

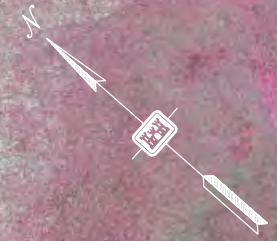
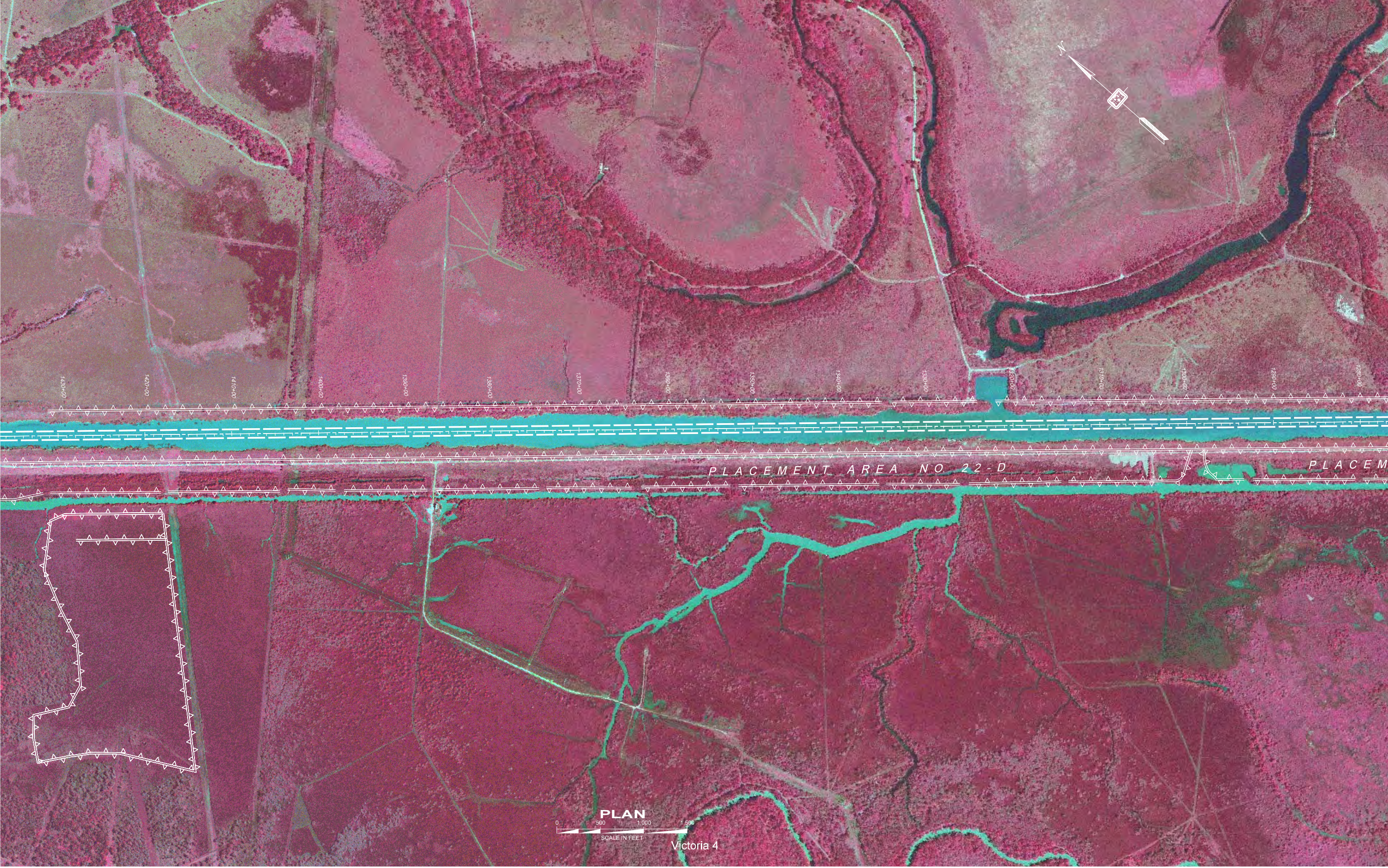
Victoria 3



US Army Corps  
of Engineers®  
Galveston District

# GIWW Tributaries Channel to Victoria – Middle Reach





1430+00

1420+00

1410+00

1400+00

1390+00

1380+00

1370+00

1360+00

1350+00

1340+00

1330+00

1320+00

1310+00

1300+00

1290+00

1280+00

PLACEMENT AREA NO 22-D

PLACEMENT



PLAN

Victoria 4



**PLAN**  
0 500 1,000 1,500  
SCALE IN FEET

Victoria 5





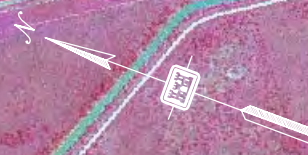
PLACEMENT AREA NO. 21

PLACEMENT AREA NO. 20

PLACEMENT AREA NO. 19



Victoria 6



P.C. STA. 692+00.00  
P.T. STA. 692+00.00

P.C. STA. 907+89.8780

00+00.00

00+00.00

00+00.00

00+00.00

00+00.00

00+00.00

00+00.00

00+00.00

00+00.00

00+00.00

00+00.00

00+00.00

00+00.00

00+00.00

00+00.00

00+00.00

PLACEMENT  
AREA  
NO. 18

PLACEMENT AREA NO. 17



PLAN

Victoria 7



US Army Corps  
of Engineers®  
Galveston District

# GIWW Tributaries Channel to Victoria – Lower Reach





CHANNEL TO LONG MOTT

PLACEMENT AREA NO. 16

PLAN

0 500 1,000 1,500  
SCALE IN FEET

Victoria 8

P.T. STA. 771+88.6170

P.C. STA. 751+85.7889

P.C. STA. 691+70.6690

P.C. STA. 640+88.5280

P.T. STA. 662+18.1480

800+00

790+00

780+00

770+00

760+00

740+00

730+00

720+00

700+00

690+00

680+00

670+00

660+00

650+00

640+00

630+00



PLACEMENT AREA  
NO. 14

PLACEMENT AREA  
N O. 11

PLACEMENT AREA  
NO. 13

PLACEMENT AREA NO. 15



Victoria 10

P.T. STA. 30+01.6230

P.C. STA. 0+00.0000

10+00

20+00

350+00

360+00

370+00

380+00

390+00

400+00

410+00

420+00

430+00

440+00

450+00

460+00

470+00

480+00

490+00

50+00

100+00

90+00

80+00

70+00

60+00

50+00

40+00

30+00

20+00

10+00

0+00



PLACEMENT AREA  
NO. 10

PLACEMENT AREA  
NO. 9

PLACEMENT AREA  
NO. 7

PLACEMENT AREA  
NO. 5

PLACEMENT AREA  
NO. 8

PLACEMENT AREA  
NO. 6

PLACEMENT AREA  
NO. 12

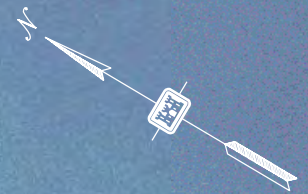




PLACEMENT AREA  
NO. 4

PLACEMENT AREA NO. 3





Victoria 13

P.C. STA. 0+00.0000  
K=2,719,405.635  
Y=13,303,424.597

001+621

EXISTING CONFINEMENT LEVEL  
FOR FISH TO BE REPAIRED  
AND MAINTAINED AS REQUIRED

PLACEMENT AREA  
NO. 1

P.C. STA. 728+645.88

729+000  
5729.65' R

P.T. STA. 729+389.41

MADRY XY  
MADRY GO=2718284.150, 1330308.154  
K=2,719,883.888  
Y=13,303,444.787

K=2,714,590.088  
Y=13,307,104.488

PLACEMENT AREA  
NO. 2

P.T. STA. 42+69.660

P.C. STA. 0+00.0000

K=2,714,771.313  
Y=13,303,444.253

1200'

734+800

3





PLACEMENT AREA NO. 15

PLACEMENT AREA NO. 15

P.T. STA. 577+13.8930

P.C. STA. 562+64.6750

P.T. STA. 543+69.5930

P.C. STA. 520+82.7060



PLAN

Victoria 9



US Army Corps  
of Engineers®  
Galveston District

# GIWW Tributaries Channel to Seadrift





PLACEMENT AREA  
NO. 13

PLACEMENT AREA  
NO. 12

PLACEMENT AREA  
NO. 8

PLACEMENT AREA  
N.O. 11

PLACEMENT AREA  
N.O. 10

PLACEMENT AREA  
NO. 9

390+00  
380+00  
370+00  
360+00  
350+00  
340+00  
330+00  
320+00  
310+00  
300+00

P.C. STA. 0+00.0000  
10+00  
20+00

10+00  
20+00

P.T. STA. 30+01.6230

P.T. STA. 30+01.6230

P.C. STA. 0+00.0000



Seadrift 1

