



US Army Corps
of Engineers®
Galveston District

GIWW Tributaries Colorado River - Channel to Bay City





US Army Corps
of Engineers®
Galveston District

GIWW Tributaries Colorado River By-Pass Channel





US Army Corps
of Engineers®
Galveston District

GIWW Tributaries

Colorado River Navigation Channel & Diversion Channel





US Army Corps
of Engineers®
Galveston District

GIWW Tributaries

Colorado River – Mouth and Impoundment Basin





PLACEMENT AREA NO. 9

PLACEMENT AREA No. 7

PLACEMENT AREA NO. 8

SILTING BASIN



Colorado River 1

P.T. 27+58.174
CURVE NO. 39

P.T. 25+32.174
CURVE NO. 40

P.T. 22+26.574
CURVE NO. 35

P.T. 20+00.000
CURVE NO. 36

700+00
CURVE NO. 33

700+00
CURVE NO. 37

746+00
CURVE NO. 38

P.T. 22+26.574
CURVE NO. 35

P.T. 20+00.000
CURVE NO. 36

P.T. 27+58.174
CURVE NO. 39

P.T. 25+32.174
CURVE NO. 40

P.T. 22+26.574
CURVE NO. 35

P.T. 20+00.000
CURVE NO. 36

P.T. 27+58.174
CURVE NO. 39

P.T. 25+32.174
CURVE NO. 40

P.T. 22+26.574
CURVE NO. 35

P.T. 20+00.000
CURVE NO. 36

P.T. 27+58.174
CURVE NO. 39

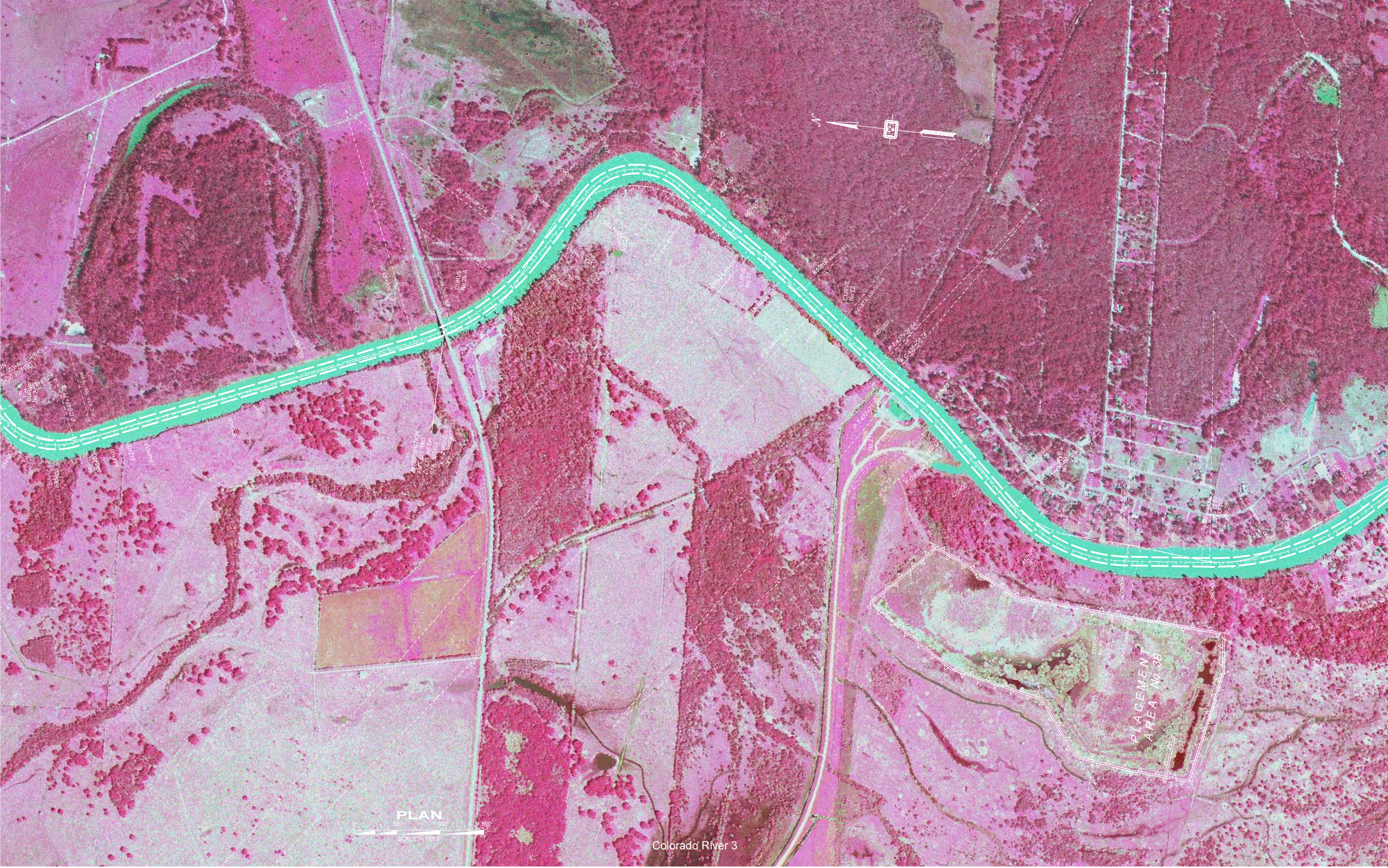
P.T. 25+32.174
CURVE NO. 40



PLACEMENT AREA No. 6



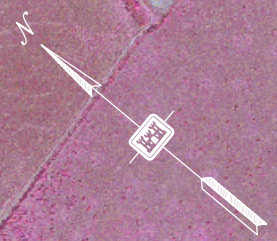
Colorado River 2



PLAN
SCALE IN FEET
0 500 1000

Colorado River 3

PLAN
0 500 1,000 1,500
SCALE IN FEET



PLACEMENT AREA No. 2

PLACEMENT AREA No. 1



Colorado River 5



Placement

Placement Area No. 3

Placement Area No. 108

BAXTER ISLAND

Colorado Crossing 6

COLORADO RIVER DIVERSION CHANNEL

STA 450+769.48 G.T.W.W. = P.C. STA 0+00.00 BY-PASS CHANNEL

P.C. STA 479.37 (BY-PASS)

P.T. STA 446.00 (BY-PASS)

P.C. STA 29+46.7950

P.T. STA 42.85 (BY-PASS)

CURVE NO. 1

P.C. STA 5+822.89

CURVE NO. 2

P.T. STA 6+204.27

P.C. STA 6+990.27

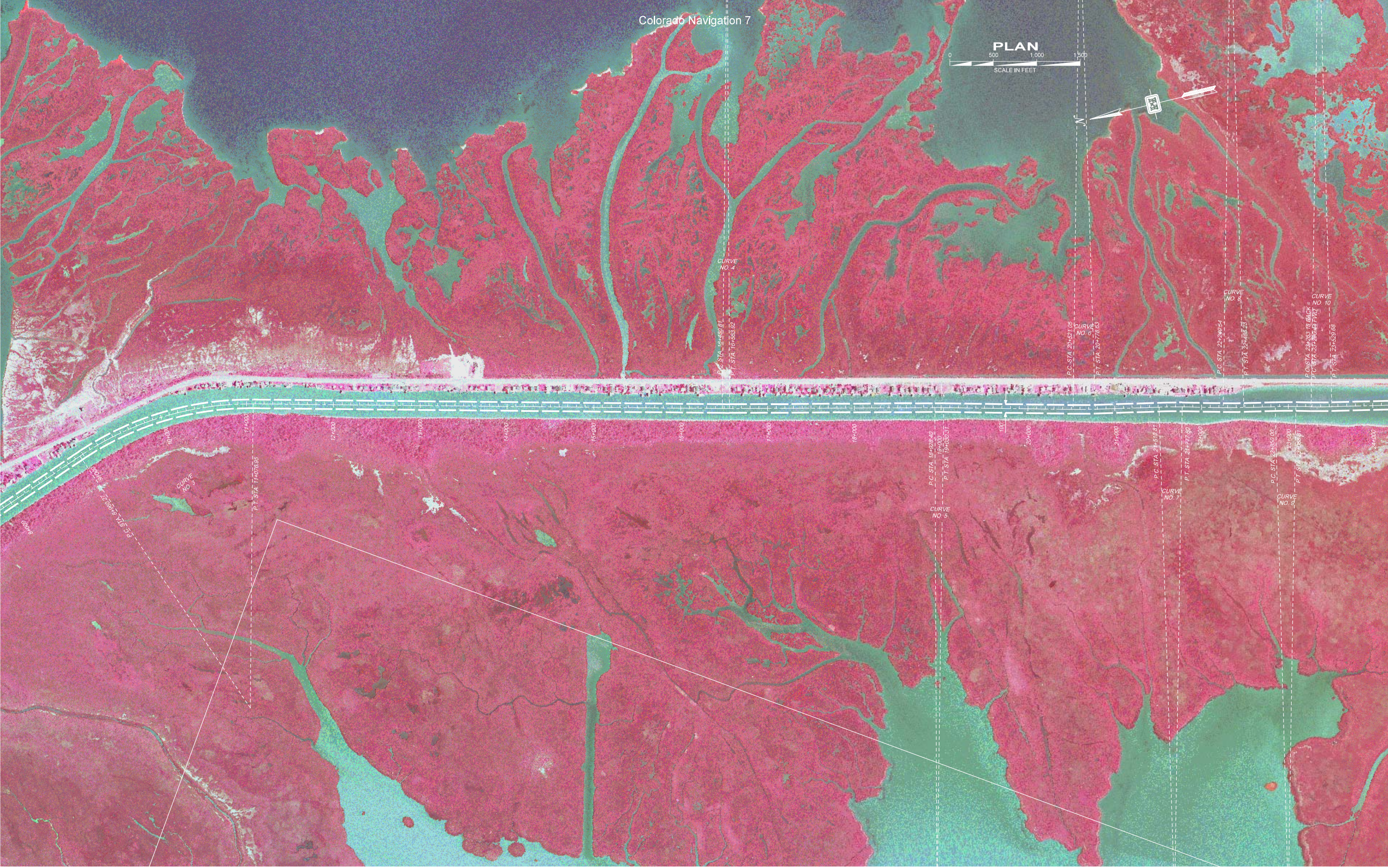
CURVE NO. 3

P.T. STA

PLAN
SCALE IN FEET



Colorado Navigation 7



CURVE NO. 4
P.C. STA. 16+400.81
P.T. STA. 16+553.92

CURVE NO. 6
P.C. STA. 20+521.06
P.T. STA. 20+773.83

CURVE NO. 8
P.C. STA. 22+240.54
P.T. STA. 22+485.23

CURVE NO. 10
P.C. STA. 23+093.18 BACK
P.C. STA. 23+202.12 FWD
P.T. STA. 23+628.68

CURVE NO. 3

CURVE NO. 5
P.C. STA. 18+928.40
P.T. STA. 19+000
P.T. STA. 19+000.31

CURVE NO. 7
P.C. STA. 21+510.81
P.T. STA. 21+777.90

CURVE NO. 9
P.C. STA. 22+850.00
P.T. STA. 23+056.81

P.T. STA. 11+076.85

P.C. STA. 8+690.2

P.C. STA. 8+690.2

10+000

10+000

11+000

12+000

13+000

14+000

15+000

16+000

17+000

18+000

19+000

20+000

21+000

22+000

23+000

24+000



CURVE NO. 10
 P.C. STA. 23+233.18 BACK
 P.C. STA. 23+290.44 FWD
 P.T. STA. 23+529.68

CURVE NO. 12
 P.C. STA. 28+996.71
 P.T. STA. 29+350.73

CURVE NO. 9
 P.C. STA. 22+860.00
 P.T. STA. 23+026.97

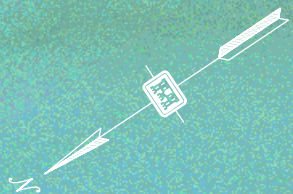
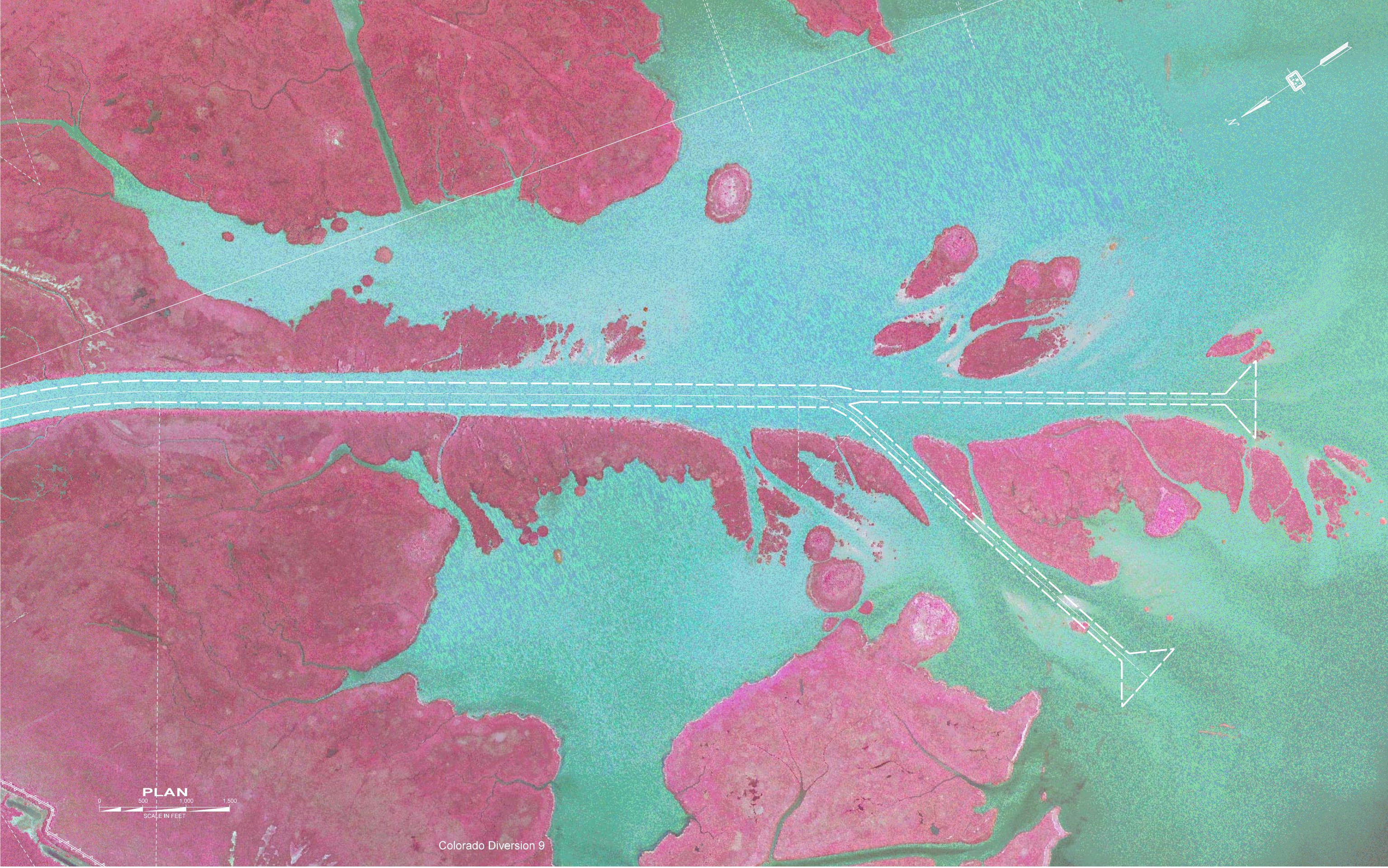
CURVE NO. 11
 P.C. STA. 24+896.24
 P.T. STA. 25+126.77

COLORADO RIVER NAVIGATION CHANNEL

TIGER ISLAND DAM

CHANNEL TRANSITION
 FROM 14' M.L.T. 100' WIDE
 TO 12' M.L.T. 300' WIDE

PLACEMENT AREA
 DREDGE MATERIAL SHALL
 BE DISCHARGED IN
 SUP. ZONE.
 NOTE: TOP OF DISCHARGE NOT
 TO EXCEED +8.0' M.L.T.



Colorado Diversion 9

PLAN
0 500 1,000 1,500
SCALE IN FEET

