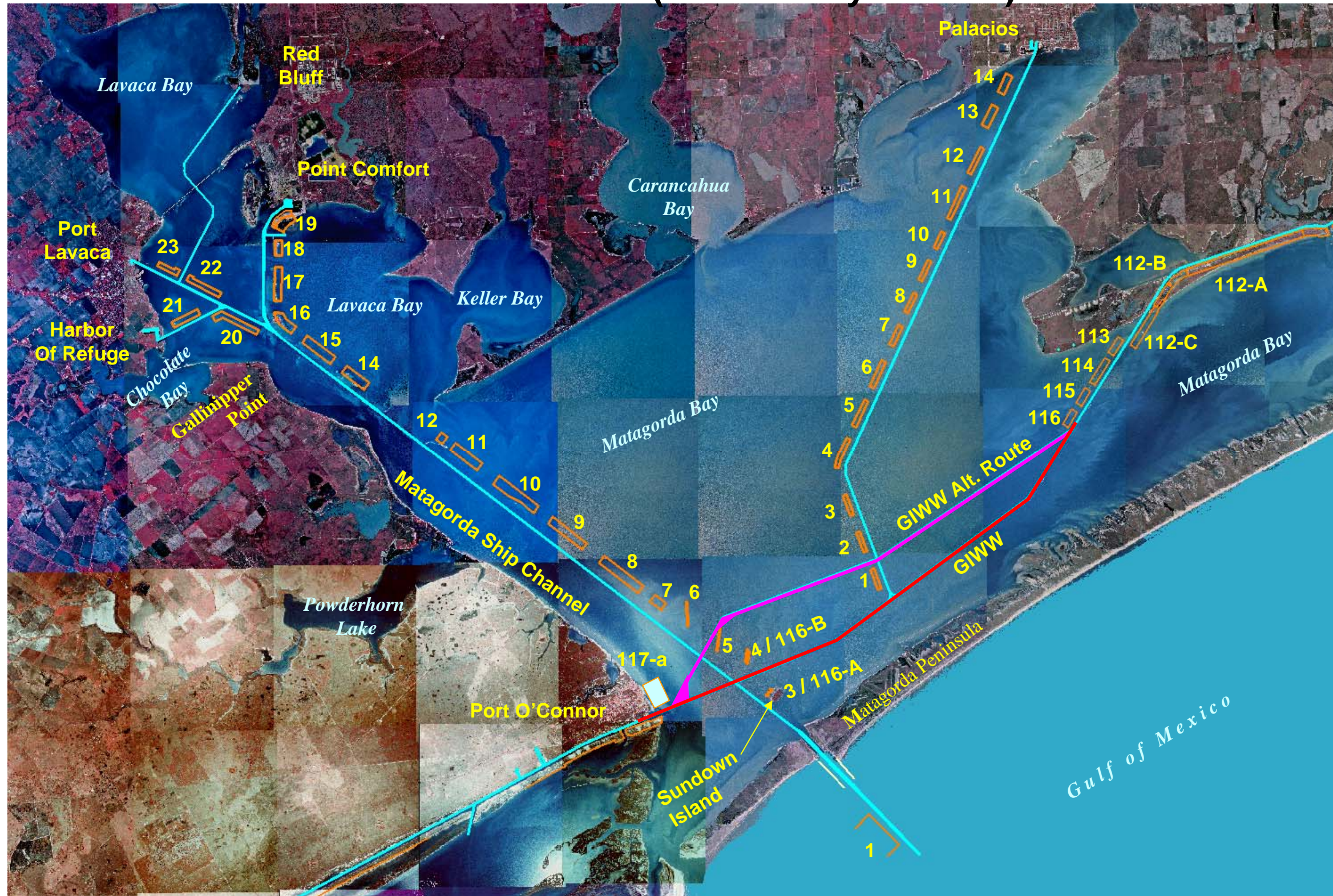


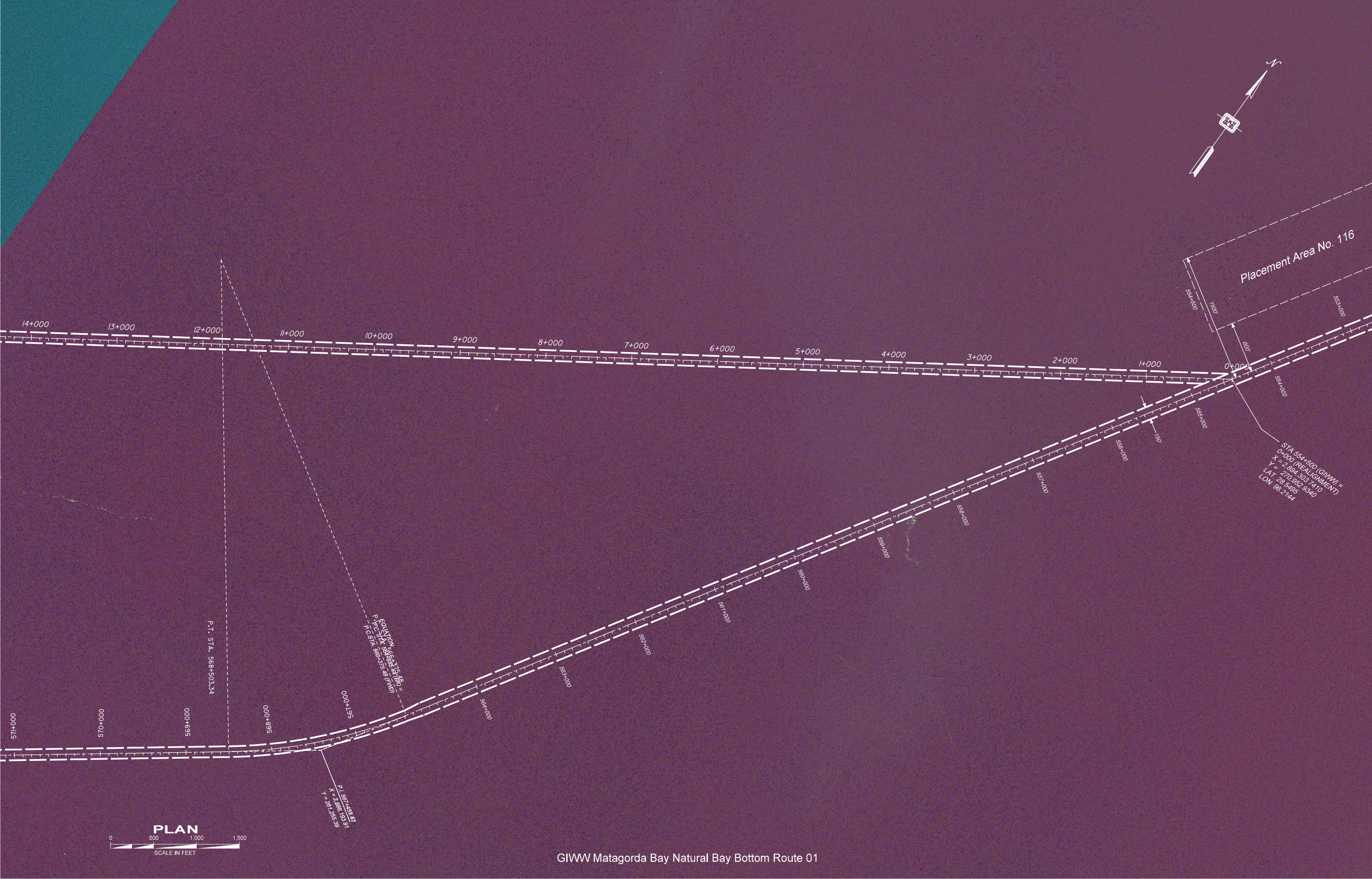
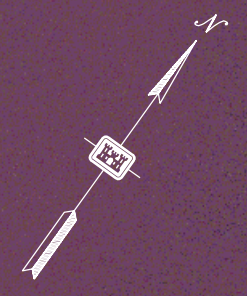


US Army Corps  
of Engineers®  
Galveston District

# GIWW – Gulf Intracoastal Waterway Across Matagorda Bay to Port O'Connor & Alternate Route (Natural Bay Bottom)







Placement Area No. 116

STA 554+500 (GIMM) =  
 0+000 (REALIGNMENT)  
 X = 2,894,303.7410  
 Y = 270,892.9340  
 LAT. 28.54465  
 LON. 96.2144

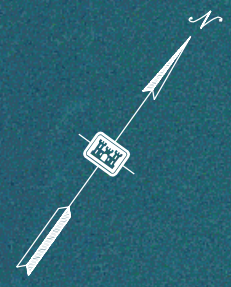
P.I. STA. 568+503.34

EQUATION:  $Y = 0.00012148X^2 + 0.000157546X + 195.000$   
 P.C. STA. 568+195  
 P.C. STA. 569+575.46 (END)

R = 1,667,258.82  
 X = 2,898,193.91  
 Y = 261,255.39





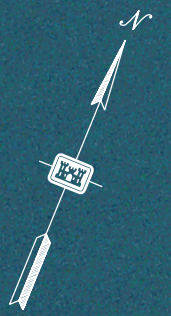


29+000 28+000 27+000 26+000 25+000 24+000 23+000 22+000 **N A T U R A L** 21+000 20+000 **B A Y** 19+000 18+000 **B O T T O M** 17+000 16+000 **R O U T E** 15+000 14+000

586+000 585+000 584+000 583+000 582+000 581+000 580+000 579+000 578+000 577+000 576+000 575+000 574+000 573+000 572+000 571+000







C H A N N E L T O P A L A C I O S

PLACEMENT AREA NO. 2

PLACEMENT AREA NO. 1

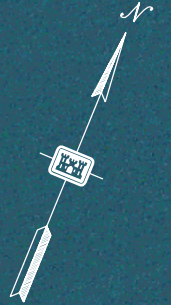
STA 785+00 (PALACIOS) =  
STA 32+791.03 (REALIGNMENT)  
X = 2,867,007.3900  
Y = 262,782,6000  
LAT. 26.5013  
LON. 96.3007

ROUTE

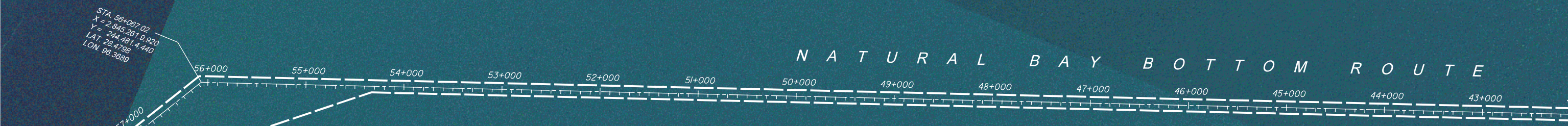
44+000 43+000 42+000 41+000 40+000 39+000 38+000 37+000 36+000 35+000 34+000 33+000 32+000 31+000 30+000 29+000 28+000







N A T U R A L B A Y B O T T O M R O U T E



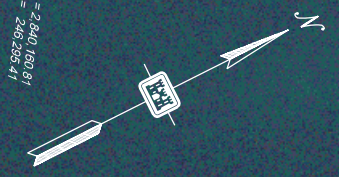
STA. 56+007.02  
X = 2,845,261.9,920  
Y = 244,481.4,440  
LAT. 28.4798  
LON. 96.3689

PLACEMENT  
AREA NO. 5

X = 2,844,006.70  
Y = 243,326.91







PLACEMENT  
AREA NO. 6

PLACEMENT  
AREA NO. 5

POINT OF DISCHARGE WITHIN THIS AREA  
NOT TO EXCEED 100 M.L.T.  
NO WIDTH NOT TO EXCEED 100'  
NO RESTRICTION ON LENGTH TO THE NORTH

STA 21+21.533.77 (REALIGNMENT)  
STA 63+000.00 (I.P.)  
STA 62+40.362.62  
X = 2,844,919.36  
Y = 2,382,654.71  
LAT. 98.9791

STA 56+000.00  
STA 57+000.00  
X = 2,844,498.41  
Y = 2,382,654.71  
LAT. 98.9791

X = 2,844,909.70  
Y = 2,392,828.91

X = 2,844,389.78  
Y = 2,392,828.61

X = 2,844,322.40  
Y = 2,392,828.53

PLAN

