

District Outlook

Colonel Richard P. Pannell



Partnerships

Large-scale projects that deliver enormous Value to the Nation

BRAZOS ISLAND HARBOR CHANNEL IMPROVEMENT PROJECT
Final Integrated Feasibility Report and Environmental Assessment

Civil Works Review Board

Presented by:
Colonel Richard F. Pannell
Commander, Galveston District

25 June 2014



Coastal Texas Protection and Restoration Study

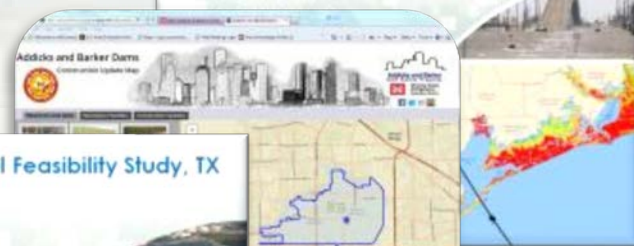
3x3x3 Exemption Briefing

COL Richard Pannell
Commander, Galveston District

28 September 2015



Sabine Pass to Galveston Bay, TX, Coastal Storm Risk Management and Ecosystem Restoration Feasibility Study



Houston Ship Channel Feasibility Study, TX

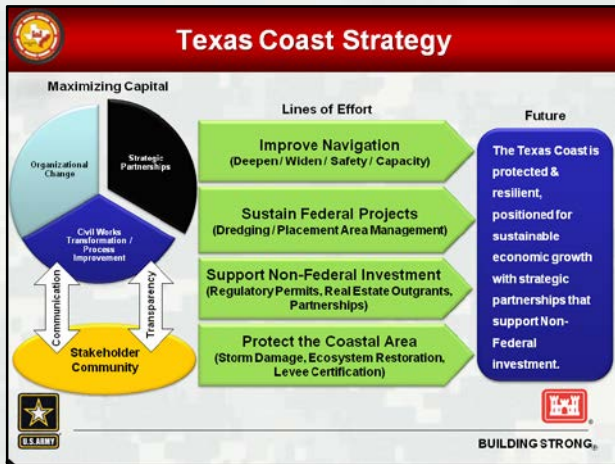
3x3x3 Exemption Briefing
COL Richard F. Pannell
Commander, Galveston District

28 September 2015



BUILDING STRONG®

Performance



Mission Execution:

- **Navigation**
 - Channel Availability
 - Traffic Metrics (vessels/tonnage)
 - Disposal Capacity
 - Beneficial Use
- **Flood Risk Management**
 - Inspections
 - Damages prevented

Capital Investment:

- **Infrastructure Quality/Deficiencies**
- **Construction Ready Projects**
 - Milestone Commitments
 - Authorizations
 - Economics
- **New Starts**

Business Strategy:

- **Customer Feedback**
- **Stakeholder Engagement Plans**
- **Project Management Plans**
- **Job Satisfaction**

Sustained Learning:

- **Pilot Projects**
- **New Technology/Processes**
- **Knowledge Management**
- **Workforce Training**

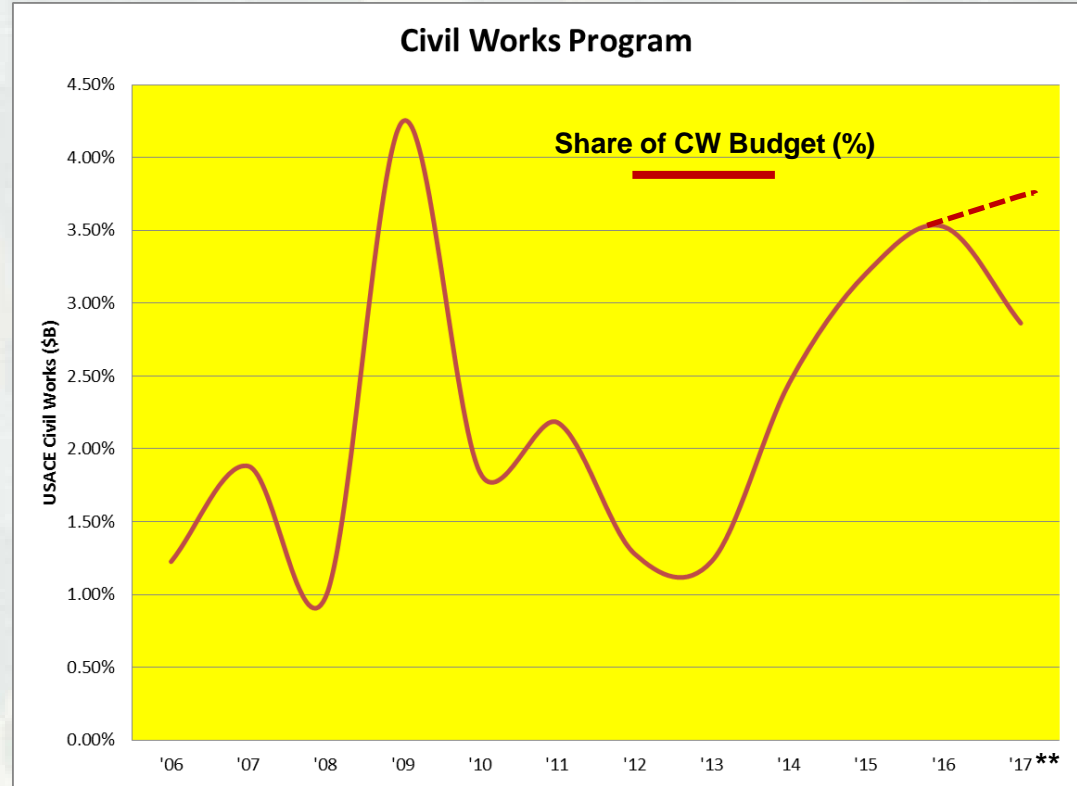


District Outlook



Outlook:

- Investigations Increasing
- Increase in Workplan Funding
- Increased Staff Capability/Capacity
- Leveraging USACE Resources
- Civil Work Transformation Continues



Fiscal Year (FY)

** FY17 President Budget only

