



Dredged Area Management Program (DAMP) and the Clinton Placement Area



Clinton Placement Area

- One of the largest PA's on the upper channel
- Located between Jacinto City and the City of Galena Park



PHA's Clinton Properties

- Part of the PHA property has been developed as a placement area
- PHA currently leases an undeveloped area for recreation and municipal uses



Dredge Area Management Program

- DAMP is a systematic program, using best practices to:
 - Gain capacity for the placement areas
 - Manage site conditions
- DAMP is recognized by PHA and the Corps as being essential to the health of the channel system



DAMP Site Management

- The program includes:
 - Vegetation control
 - Mosquito and pest control
 - Community coordination and outreach
 - Monitoring the placement areas between Corps contracts
 - Managing site drainage after dredging cycles and during the rainy season
 - Planning to support future site use
- The program is a full-year activity
- PHA uses its specialty consultant, J. Simmons Group to perform the site DAMP activities



DAMP and regaining capacity

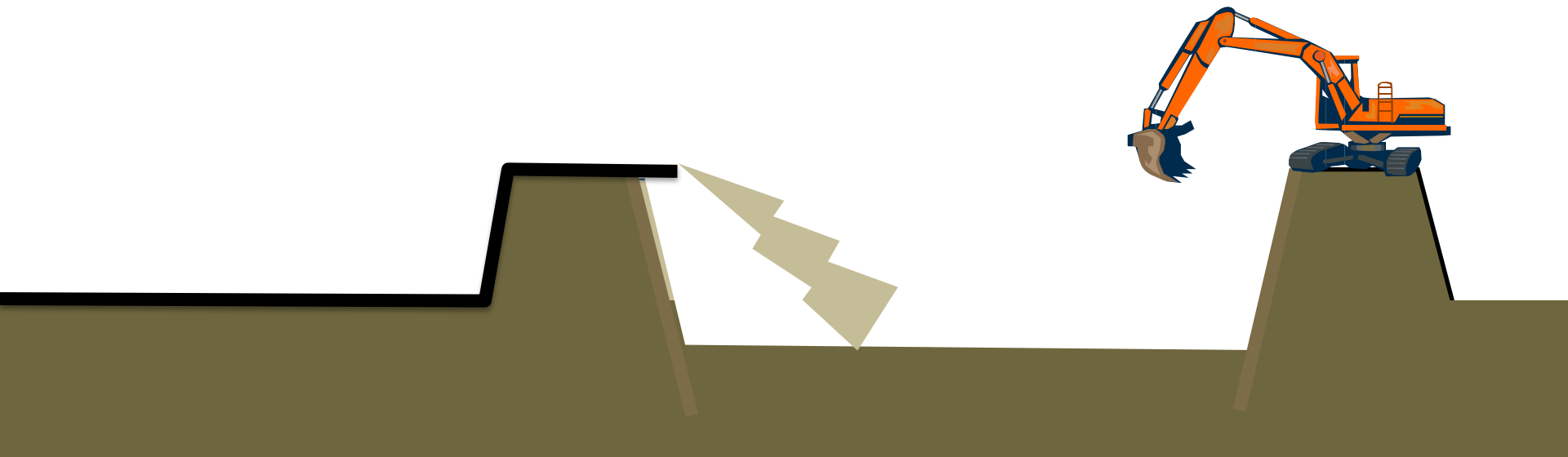
- When dredge material is placed into a site, the material has a high water content; the water can be trapped within a site when the surface dries.
- Activities to drain water from the placement area causes the material to shrink, and create capacity



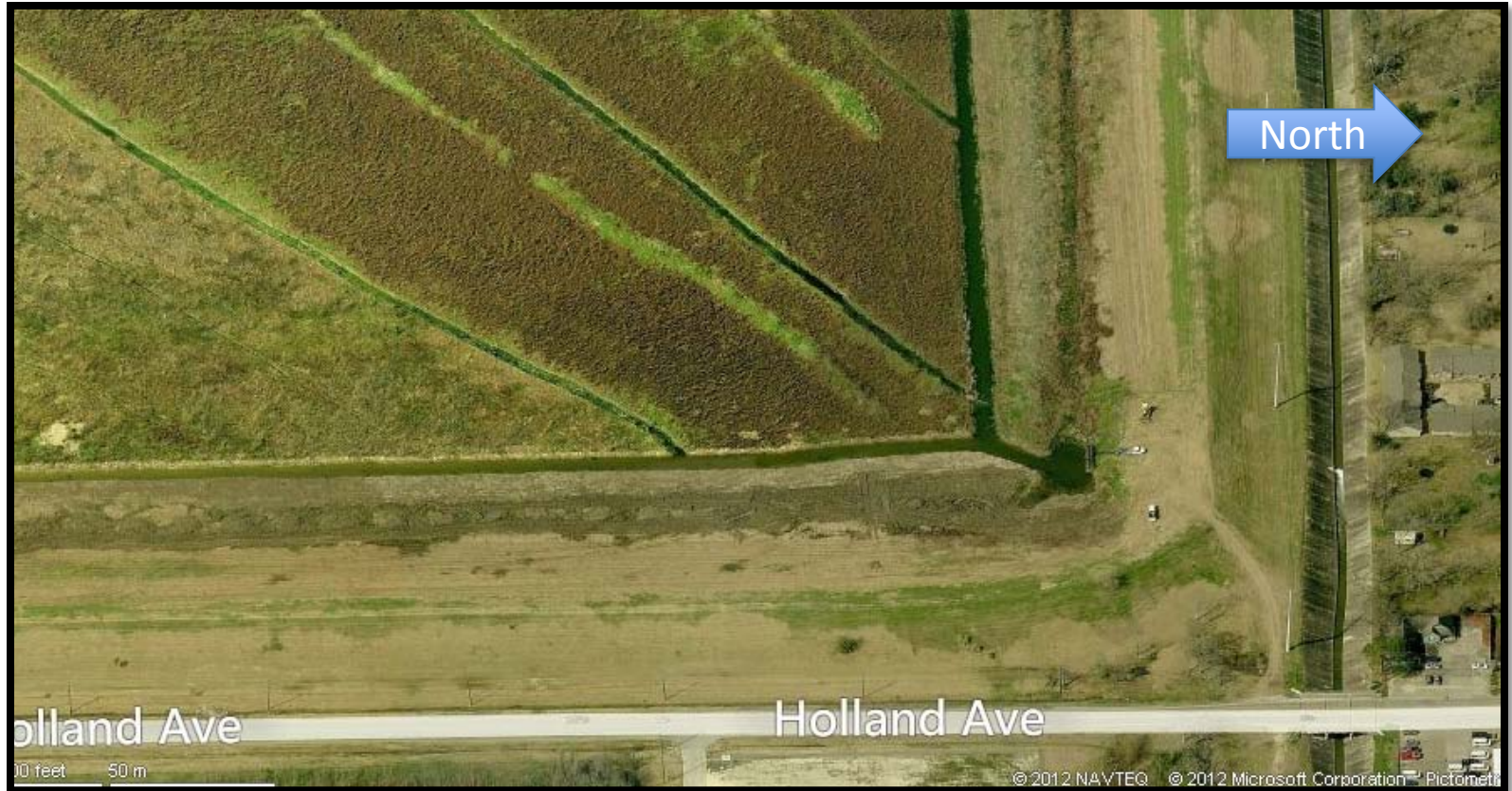
JSG ditching PA 14, Houston Ship Channel

Maintaining Capacity

- Ditching, draining, drying
 - Can increase capacity of area over time
 - Very important for heavily used sites



Clinton Placement Area



Clinton Placement Area



Clinton PA Community Coordination

- Listening and informing the community
 - City council and community meeting attendance
 - Coordination with mayors
 - News letters and other information about upcoming construction and continuing maintenance
- Signage
- Special coordination—site use and mowing prior to 4th of July fireworks

