

# East/West Clinton Placement Area (PA)

## Design and Management

**Ralph E. Steiner, P.E., PMP**

Area Engineer

Northern Area Office

Galveston District

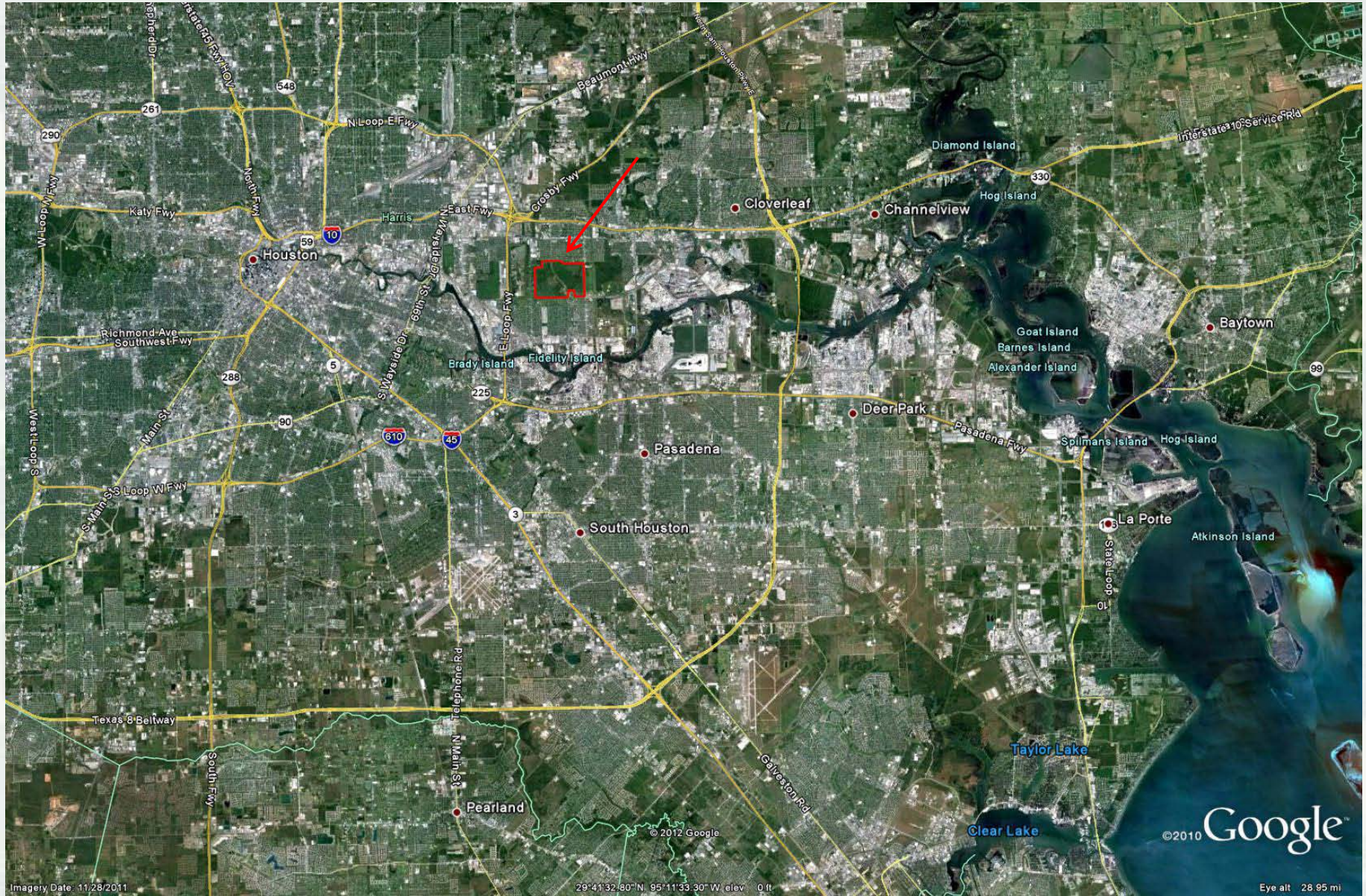
July 24, 2012



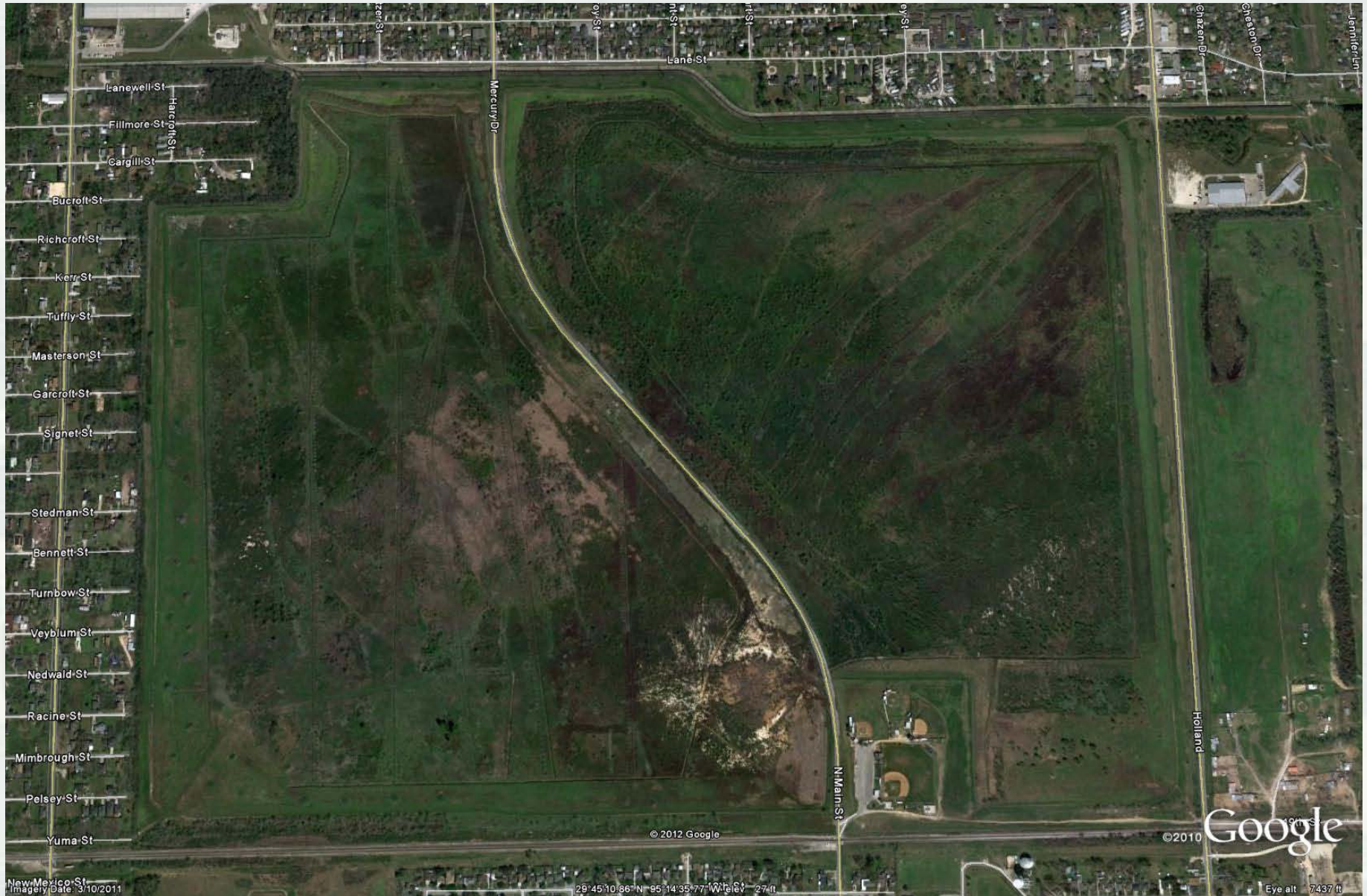
US Army Corps of Engineers  
**BUILDING STRONG**®



# Location of E-W Clinton PA



# Aerial Image

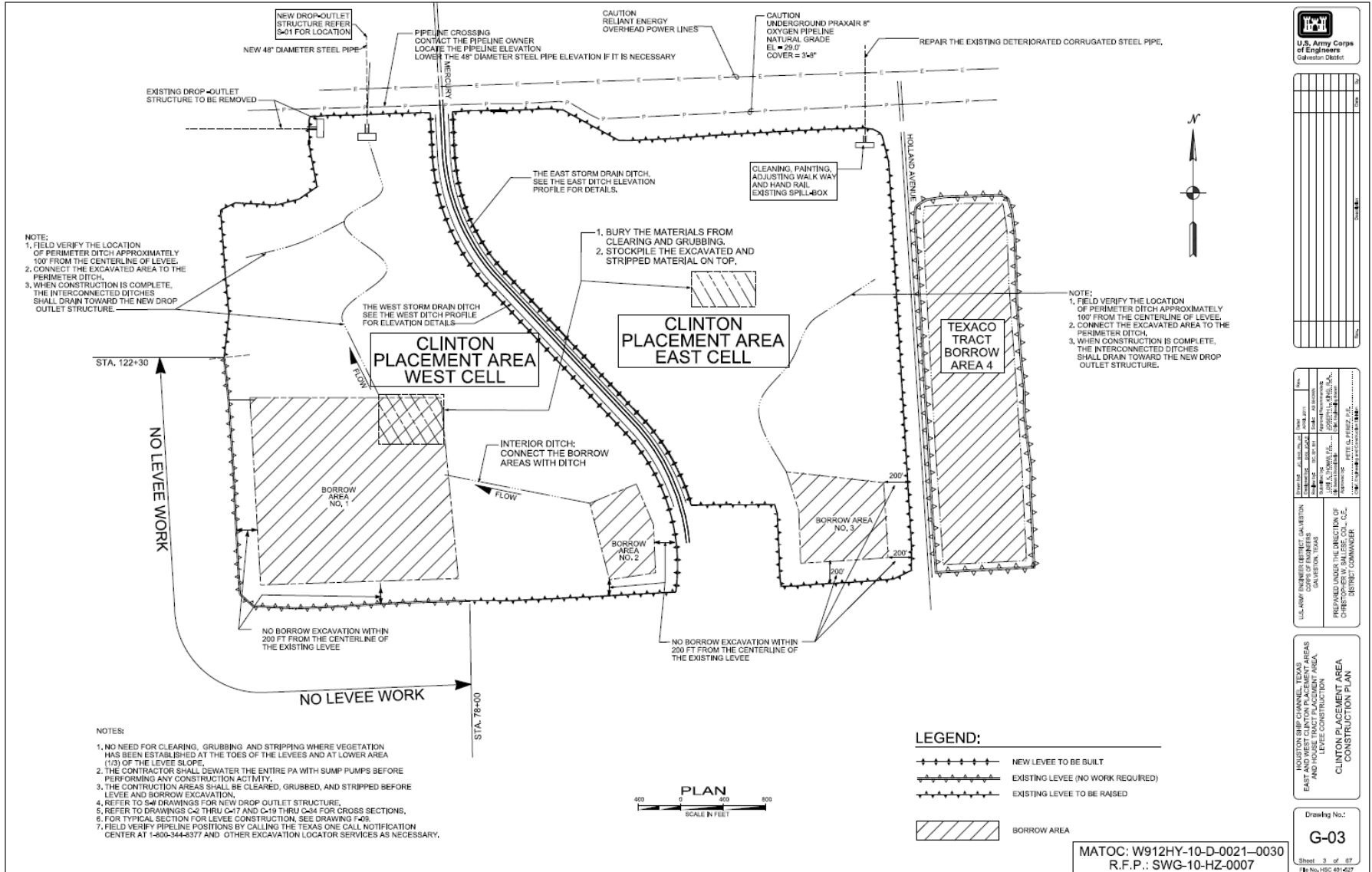


# E-W Clinton PA

- Total Size: 682 acres (approximate)
  - ▶ East Clinton: 320 acres
  - ▶ West Clinton: 362 acres
- Capacity (approximate)
  - ▶ East Clinton: 4 million CY
  - ▶ West Clinton: 3 million CY
- New levee construction – elevation: +49 ft. NAD 88
  - ▶ East Clinton: 250,000 CY fill material
  - ▶ West Clinton: 177,000 CY fill material
- Two new spill boxes, one each for East / West
- Updated drainage along Mercury Drive
- Started 09/15/2011
- Completed 06/08/2012
- Cost: \$5.8 million



# 2011 E/W Clinton Project















**Borrow pit for levee fill**



---

**BUILDING STRONG®**



## **Clinton PA West Cell, East Levee**

New levee along Mercury Drive, Stage I fill.



**BUILDING STRONG®**



## Levee construction in West Cell



**BUILDING STRONG®**



## Clinton PA East Cell

Geogrid in base of new levee along Mercury Drive.



**BUILDING STRONG®**



## Clinton PA East Cell Levee Construction

Northeast corner of East Cell, along Holland Road. Dragline crane placing Stage III fill to elevation +49 feet.



**BUILDING STRONG®**



## Clinton PA East Cell

Levee construction along north levee.



**BUILDING STRONG®**



**East Cell levee along Mercury Drive**



**BUILDING STRONG®**





## East Cell levee

Jacinto City Ditch on the left



**BUILDING STRONG®**



## Updating drainage along Mercury Drive

36-inch RCP pipe with cement stabilized sand awaiting compaction and backfill.



**BUILDING STRONG®**



## Drop-Outlet Structure under construction

New discharge pipe for West Outlet structure.



**BUILDING STRONG®**



## New Drop-Outlet Structure

East Cell Outlet Structure.



**BUILDING STRONG®**



## **New drainage outlet**

36-inch diameter steel discharge pipe before cutoff. Installed by horizontal drilling through north levee in northwest corner of East Cell. Ties into storm drain system along Mercury Drive.





## North West Corner of East Cell

New drainage pipe to Jacinto City Ditch



**BUILDING STRONG®**



**Finished levee – inside PA**



---

**BUILDING STRONG®**



**Finished levee – outside PA**



---

**BUILDING STRONG®**



**Ralph E. Steiner, P.E., PMP**  
**Area Engineer**  
**Northern Area Office**  
**U.S. Army Corps of Engineers**  
**Galveston District**  
**409-766-3907**  
**[ralph.e.steiner@usace.army.mil](mailto:ralph.e.steiner@usace.army.mil)**



---

**BUILDING STRONG®**