



**U.S. ARMY CORPS OF ENGINEERS  
REGULATORY PROGRAM  
APPROVED JURISDICTIONAL DETERMINATION FORM (INTERIM)  
NAVIGABLE WATERS PROTECTION RULE**

**I. ADMINISTRATIVE INFORMATION**

Completion Date of Approved Jurisdictional Determination (AJD): 1/6/2021

ORM Number: SWG-2020-00449

Associated JDs: N/A

Review Area Location<sup>1</sup>: State/Territory: Texas City: Houston County/Parish/Borough: Harris

Center Coordinates of Review Area: Latitude 29.909020 Longitude -95.149253

**II. FINDINGS**

**A. Summary:** Check all that apply. At least one box from the following list MUST be selected. Complete the corresponding sections/tables and summarize data sources.

- ☐ The review area is comprised entirely of dry land (i.e., there are no waters or water features, including wetlands, of any kind in the entire review area). Rationale: N/A or describe rationale.
- ☐ There are "navigable waters of the United States" within Rivers and Harbors Act jurisdiction within the review area (complete table in Section II.B).
- ☐ There are "waters of the United States" within Clean Water Act jurisdiction within the review area (complete appropriate tables in Section II.C).
- ☒ There are waters or water features excluded from Clean Water Act jurisdiction within the review area (complete table in Section II.D).

**B. Rivers and Harbors Act of 1899 Section 10 (§ 10)<sup>2</sup>**

§ 10 Name	§ 10 Size	§ 10 Criteria	Rationale for § 10 Determination
N/A.	N/A.	N/A.	N/A.

**C. Clean Water Act Section 404**

Territorial Seas and Traditional Navigable Waters ((a)(1) waters): <sup>3</sup>				
(a)(1) Name	(a)(1) Size	(a)(1) Criteria	Rationale for (a)(1) Determination	
N/A.	N/A.	N/A.	N/A.	

Tributaries ((a)(2) waters):				
(a)(2) Name	(a)(2) Size	(a)(2) Criteria	Rationale for (a)(2) Determination	
N/A.	N/A.	N/A.	N/A.	

Lakes and ponds, and impoundments of jurisdictional waters ((a)(3) waters):				
(a)(3) Name	(a)(3) Size	(a)(3) Criteria	Rationale for (a)(3) Determination	
N/A.	N/A.	N/A.	N/A.	

Adjacent wetlands ((a)(4) waters):				
(a)(4) Name	(a)(4) Size	(a)(4) Criteria	Rationale for (a)(4) Determination	
N/A.	N/A.	N/A.	N/A.	

<sup>1</sup> Map(s)/figure(s) are attached to the AJD provided to the requestor.

<sup>2</sup> If the navigable water is not subject to the ebb and flow of the tide or included on the District's list of Rivers and Harbors Act Section 10 navigable waters list, do NOT use this document to make the determination. The District must continue to follow the procedure outlined in 33 CFR part 329.14 to make a Rivers and Harbors Act Section 10 navigability determination.

<sup>3</sup> A stand-alone TNW determination is completed independently of a request for an AJD. A stand-alone TNW determination is conducted for a specific segment of river or stream or other type of waterbody, such as a lake, where upstream or downstream limits or lake borders are established. A stand-alone TNW determination should be completed following applicable guidance and should NOT be documented on the AJD Form.



**U.S. ARMY CORPS OF ENGINEERS  
REGULATORY PROGRAM  
APPROVED JURISDICTIONAL DETERMINATION FORM (INTERIM)  
NAVIGABLE WATERS PROTECTION RULE**

**D. Excluded Waters or Features**

Excluded waters ((b)(1) – (b)(12)): <sup>4</sup>				
Exclusion Name	Exclusion Size		Exclusion <sup>5</sup>	Rationale for Exclusion Determination
Ditch 1	2642.5	linear feet	(b)(5) Ditch that is not an (a)(1) or (a)(2) water, and those portions of a ditch constructed in an (a)(4) water that do not satisfy the conditions of (c)(1).	The review area contains an upland cut, man-made drainage ditch 1 not constructed in a (c)(1) or (a)(4). This ditch is not a water of the US
Ditch 2	554.49	linear feet	(b)(5) Ditch that is not an (a)(1) or (a)(2) water, and those portions of a ditch constructed in an (a)(4) water that do not satisfy the conditions of (c)(1).	The review area contains an upland cut, man-made drainage ditch 2 not constructed in a (c)(1) or (a)(4). This ditch is not a water of the US
Ditch 3	511.7	linear feet	(b)(5) Ditch that is not an (a)(1) or (a)(2) water, and those portions of a ditch constructed in an (a)(4) water that do not satisfy the conditions of (c)(1).	The review area contains an upland cut, man-made drainage ditch 3 not constructed in a (c)(1) or (a)(4). This ditch is not a water of the US
Ditch 4	838.18	linear feet	(b)(5) Ditch that is not an (a)(1) or (a)(2) water, and those portions of a ditch constructed in an (a)(4) water that do not satisfy the conditions of (c)(1).	The review area contains an upland cut, man-made drainage ditch 4 not constructed in a (c)(1) or (a)(4). This ditch is not a water of the US

<sup>4</sup> Some excluded waters, such as (b)(2) and (b)(4), may not be specifically identified on the AJD form unless a requestor specifically asks a Corps district to do so. Corps districts may, in case-by-case instances, choose to identify some or all of these waters within the review area.

<sup>5</sup> Because of the broad nature of the (b)(1) exclusion and in an effort to collect data on specific types of waters that would be covered by the (b)(1) exclusion, four sub-categories of (b)(1) exclusions were administratively created for the purposes of the AJD Form. These four sub-categories are not new exclusions, but are simply administrative distinctions and remain (b)(1) exclusions as defined by the NWPR.



**U.S. ARMY CORPS OF ENGINEERS  
REGULATORY PROGRAM  
APPROVED JURISDICTIONAL DETERMINATION FORM (INTERIM)  
NAVIGABLE WATERS PROTECTION RULE**

Excluded waters ((b)(1) – (b)(12)): <sup>4</sup>				
Exclusion Name	Exclusion Size		Exclusion <sup>5</sup>	Rationale for Exclusion Determination
Ditch 5	3039.26	linear feet	(b)(5) Ditch that is not an (a)(1) or (a)(2) water, and those portions of a ditch constructed in an (a)(4) water that do not satisfy the conditions of (c)(1).	The review area contains an upland cut, man-made drainage ditch 4 not constructed in a (c)(1) or (a)(4). This ditch is not a water of the US
Ditch 6	1976.41	linear feet	(b)(5) Ditch that is not an (a)(1) or (a)(2) water, and those portions of a ditch constructed in an (a)(4) water that do not satisfy the conditions of (c)(1).	The review area contains an upland cut, man-made drainage ditch 6 not constructed in a (c)(1) or (a)(4). This ditch is not a water of the US
West Canal	3465.87	linear feet	(b)(1) Water or water feature that is not identified in (a)(1)-(a)(4) and does not meet the other (b)(1) subcategories.	West Canal is a drinking water aqueduct that does not meet the other sub-categories of (b)(1) exclusions, and is not an (a)(1), (2), (3), or (4) water as non-jurisdictional under this specific type of (b)(1) exclusion for documentation purposes.

### III. SUPPORTING INFORMATION

**A. Select/enter all resources** that were used to aid in this determination and attach data/maps to this document and/or references/citations in the administrative record, as appropriate.

☐ Information submitted by, or on behalf of, the applicant/consultant: [Wetland Delineation Report, Pedestrian/Bike Over West Canal, Holloway Environmental, April 2020](#)

This information is sufficient for purposes of this AJD.

Rationale: [N/A](#)

☐ Data sheets prepared by the Corps: [Title\(s\) and/or date\(s\)](#).

☒ Photographs: [Aerial: 1938, 1944, 1953, 1966, 1973, 1976, 1983, 1989, 1995, 2004](#)

☐ Corps site visit(s) conducted on: [Date\(s\)](#).

☐ Previous Jurisdictional Determinations (AJDs or PJDs): [ORM Number\(s\) and date\(s\)](#).

☐ Antecedent Precipitation Tool: [provide detailed discussion in Section III.B.](#)

☐ USDA NRCS Soil Survey: [Title\(s\) and/or date\(s\)](#).

☐ USFWS NWI maps: [Title\(s\) and/or date\(s\)](#).

☒ USGS topographic maps: [USGS Topo, 7.5 min Harmaston, 1916, 1920, 1943, 1947, 1967, 1982, 1995, 2013](#)



**U.S. ARMY CORPS OF ENGINEERS  
REGULATORY PROGRAM  
APPROVED JURISDICTIONAL DETERMINATION FORM (INTERIM)  
NAVIGABLE WATERS PROTECTION RULE**

**Other data sources used to aid in this determination:**

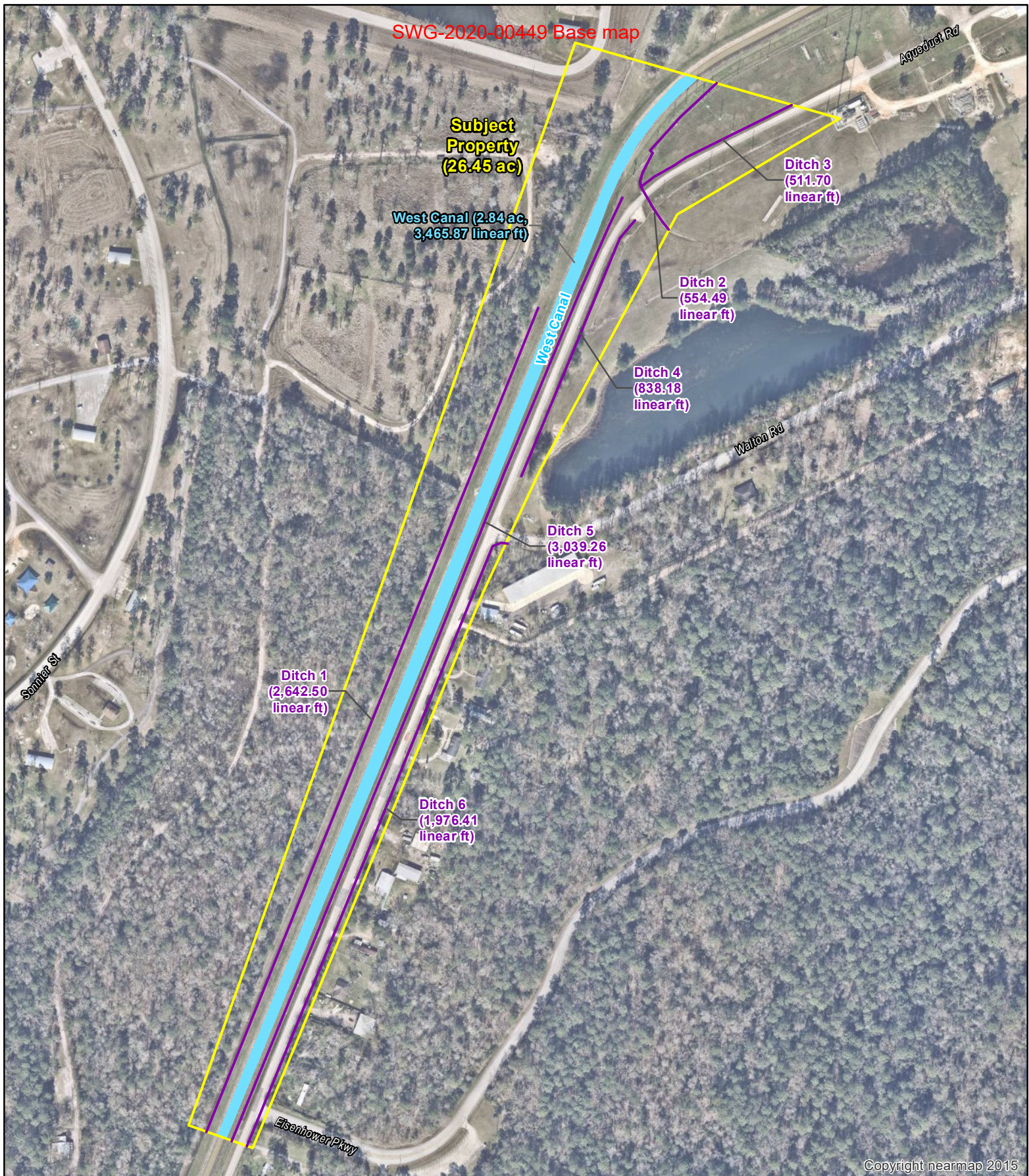
Data Source (select)	Name and/or date and other relevant information
USGS Sources	N/A.
USDA Sources	N/A.
NOAA Sources	N/A.
USACE Sources	N/A.
State/Local/Tribal Sources	N/A.
Other Sources	N/A.

**B. Typical year assessment(s):** N/A

**C. Additional comments to support AJD:**

Label	Area (ac)	Length (LF)	Lat	Long
Ditch 1	N/A	2642.5	29.90779406	-95.14996872
Ditch 2	N/A	554.49	29.91251375	-95.1474466
Ditch 3	N/A	511.7	29.91256686	-95.14685496
Ditch 4	N/A	838.18	29.9108863	-95.14813067
Ditch 5	N/A	3039.26	29.90822084	-95.1494783
Ditch 6	N/A	1976.41	29.90682901	-95.14994102
West Canal	2.84	3,465.87	29.90889285	-95.14928126

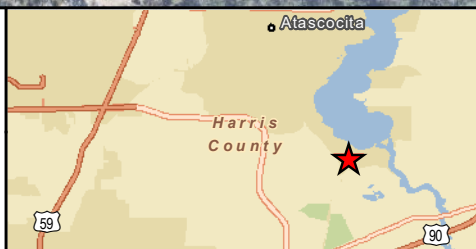




### Exhibit 3: 2020 Aerial Photograph with Delineated Aquatic Features

Pedestrian/Bike Bridge Over West Canal  
Harris County, Texas

Created: 4/4/2020



**HOLLAWAY**  
ENVIRONMENTAL + COMMUNICATIONS

