



**U.S. ARMY CORPS OF ENGINEERS
REGULATORY PROGRAM
APPROVED JURISDICTIONAL DETERMINATION FORM (INTERIM)
NAVIGABLE WATERS PROTECTION RULE**

I. ADMINISTRATIVE INFORMATION

Completion Date of Approved Jurisdictional Determination (AJD): 7/26/2021

ORM Number: SWG-2020-00648

Associated JDs: N/A

Review Area Location¹: State/Territory: Texas City: Ingleside County/Parish/Borough: San Patricio

Center Coordinates of Review Area: Latitude 27.8442° N Longitude 97.2114° W

II. FINDINGS

A. Summary: Check all that apply. At least one box from the following list MUST be selected. Complete the corresponding sections/tables and summarize data sources.

- ☐ The review area is comprised entirely of dry land (i.e., there are no waters or water features, including wetlands, of any kind in the entire review area). Rationale: N/A
- ☐ There are "navigable waters of the United States" within Rivers and Harbors Act jurisdiction within the review area (complete table in Section II.B).
- ☐ There are "waters of the United States" within Clean Water Act jurisdiction within the review area (complete appropriate tables in Section II.C).
- ☒ There are waters or water features excluded from Clean Water Act jurisdiction within the review area (complete table in Section II.D).

B. Rivers and Harbors Act of 1899 Section 10 (§ 10)²

§ 10 Name	§ 10 Size	§ 10 Criteria	Rationale for § 10 Determination
N/A.	N/A.	N/A.	N/A.

C. Clean Water Act Section 404

Territorial Seas and Traditional Navigable Waters ((a)(1) waters): ³				
(a)(1) Name	(a)(1) Size	(a)(1) Criteria	Rationale for (a)(1) Determination	
N/A.	N/A.	N/A.	N/A.	

Tributaries ((a)(2) waters):				
(a)(2) Name	(a)(2) Size	(a)(2) Criteria	Rationale for (a)(2) Determination	
N/A.	N/A.	N/A.	N/A.	

Lakes and ponds, and impoundments of jurisdictional waters ((a)(3) waters):				
(a)(3) Name	(a)(3) Size	(a)(3) Criteria	Rationale for (a)(3) Determination	
N/A.	N/A.	N/A.	N/A.	

Adjacent wetlands ((a)(4) waters):				
(a)(4) Name	(a)(4) Size	(a)(4) Criteria	Rationale for (a)(4) Determination	
N/A.	N/A.	N/A.	N/A.	

¹ Map(s)/figure(s) are attached to the AJD provided to the requestor.

² If the navigable water is not subject to the ebb and flow of the tide or included on the District's list of Rivers and Harbors Act Section 10 navigable waters list, do NOT use this document to make the determination. The District must continue to follow the procedure outlined in 33 CFR part 329.14 to make a Rivers and Harbors Act Section 10 navigability determination.

³ A stand-alone TNW determination is completed independently of a request for an AJD. A stand-alone TNW determination is conducted for a specific segment of river or stream or other type of waterbody, such as a lake, where upstream or downstream limits or lake borders are established. A stand-alone TNW determination should be completed following applicable guidance and should NOT be documented on the AJD Form.



**U.S. ARMY CORPS OF ENGINEERS
REGULATORY PROGRAM
APPROVED JURISDICTIONAL DETERMINATION FORM (INTERIM)
NAVIGABLE WATERS PROTECTION RULE**

D. Excluded Waters or Features

Excluded waters ((b)(1) – (b)(12)): ⁴				
Exclusion Name	Exclusion Size		Exclusion ⁵	Rationale for Exclusion Determination
T1-WET 1	0.06	acre(s)	(b)(1) Non-adjacent wetland.	It is a palustrine emergent wetland that does not abut an (a)(1)-(a)(3) water. It is not located in a landscape position that would be flooded/inundated by an (a)(1)-(a)(3) water during a “typical year”. It is separated from an (a)(1)-(a)(3) water by more than a single natural or man-made barrier.
T1-WET 2	0.12	acre(s)	(b)(1) Non-adjacent wetland.	It is a palustrine emergent wetland that does not abut an (a)(1)-(a)(3) water. It is not located in a landscape position that would be flooded/inundated by an (a)(1)-(a)(3) water during a “typical year”. It is separated from an (a)(1)-(a)(3) water by more than a single natural or man-made barrier.
T1-WET 3	0.13	acre(s)	(b)(1) Non-adjacent wetland.	It is a palustrine emergent wetland that does not abut an (a)(1)-(a)(3) water. It is not located in a landscape position that would be flooded/inundated by an (a)(1)-(a)(3) water during a “typical year”. It is separated from an (a)(1)-(a)(3) water by more than a single natural or man-made barrier.
T1-WET 4	0.16	acre(s)	(b)(1) Non-adjacent wetland.	It is a palustrine emergent wetland that does not abut an (a)(1)-(a)(3) water. It is not located in a landscape position that would be flooded/inundated by an (a)(1)-(a)(3) water during a “typical year”. It is separated from an (a)(1)-(a)(3) water by more than a single natural or man-made barrier.
T1-WET 5	0.08	acre(s)	(b)(1) Non-adjacent wetland.	It is a palustrine emergent wetland that does not abut an (a)(1)-(a)(3) water. It is not located in a landscape position that would be flooded/inundated by an (a)(1)-(a)(3) water during a “typical year”. It is separated from an (a)(1)-(a)(3) water by more than a single natural or man-made barrier.

⁴ Some excluded waters, such as (b)(2) and (b)(4), may not be specifically identified on the AJD form unless a requestor specifically asks a Corps district to do so. Corps districts may, in case-by-case instances, choose to identify some or all of these waters within the review area.

⁵ Because of the broad nature of the (b)(1) exclusion and in an effort to collect data on specific types of waters that would be covered by the (b)(1) exclusion, four sub-categories of (b)(1) exclusions were administratively created for the purposes of the AJD Form. These four sub-categories are not new exclusions, but are simply administrative distinctions and remain (b)(1) exclusions as defined by the NWPR.



**U.S. ARMY CORPS OF ENGINEERS
REGULATORY PROGRAM
APPROVED JURISDICTIONAL DETERMINATION FORM (INTERIM)
NAVIGABLE WATERS PROTECTION RULE**

Excluded waters ((b)(1) – (b)(12)): ⁴			
Exclusion Name	Exclusion Size	Exclusion ⁵	Rationale for Exclusion Determination
T1-WET 6	0.04	acre(s)	(b)(1) Non-adjacent wetland.
			It is a palustrine emergent wetland that does not abut an (a)(1)-(a)(3) water. It is not located in a landscape position that would be flooded/inundated by an (a)(1)-(a)(3) water during a “typical year”. It is separated from an (a)(1)-(a)(3) water by more than a single natural or man-made barrier.
T1-WET 7	0.03	acre(s)	(b)(1) Non-adjacent wetland.
			It is a palustrine emergent wetland that does not abut an (a)(1)-(a)(3) water. It is not located in a landscape position that would be flooded/inundated by an (a)(1)-(a)(3) water during a “typical year”. It is separated from an (a)(1)-(a)(3) water by more than a single natural or man-made barrier.
T2-WET 1	0.01	acre(s)	(b)(1) Non-adjacent wetland.
			It is a palustrine emergent wetland that does not abut an (a)(1)-(a)(3) water. It is not located in a landscape position that would be flooded/inundated by an (a)(1)-(a)(3) water during a “typical year”. It is separated from an (a)(1)-(a)(3) water by more than a single natural or man-made barrier.
T2-WET 2	0.01	acre(s)	(b)(1) Non-adjacent wetland.
			It is a palustrine emergent wetland that does not abut an (a)(1)-(a)(3) water. It is not located in a landscape position that would be flooded/inundated by an (a)(1)-(a)(3) water during a “typical year”. It is separated from an (a)(1)-(a)(3) water by more than a single natural or man-made barrier.
T2-WET 3	0.07	acre(s)	(b)(1) Non-adjacent wetland.
			It is a palustrine emergent wetland that does not abut an (a)(1)-(a)(3) water. It is not located in a landscape position that would be flooded/inundated by an (a)(1)-(a)(3) water during a “typical year”. It is separated from an (a)(1)-(a)(3) water by more than a single natural or man-made barrier.
T2-WET 4	0.03	acre(s)	(b)(1) Non-adjacent wetland.
			It is a palustrine emergent wetland that does not abut an (a)(1)-(a)(3) water. It is not located in a landscape position that would be flooded/inundated by an (a)(1)-(a)(3) water during a “typical year”. It is separated from an (a)(1)-(a)(3) water by more than a single natural or man-made barrier.



**U.S. ARMY CORPS OF ENGINEERS
REGULATORY PROGRAM
APPROVED JURISDICTIONAL DETERMINATION FORM (INTERIM)
NAVIGABLE WATERS PROTECTION RULE**

Excluded waters ((b)(1) – (b)(12)): ⁴			
Exclusion Name	Exclusion Size	Exclusion ⁵	Rationale for Exclusion Determination
T2-WET 5	0.01	acre(s)	(b)(1) Non-adjacent wetland.
T2-WET 6	0.01	acre(s)	(b)(1) Non-adjacent wetland.
T2-WET 7	0.03	acre(s)	(b)(1) Non-adjacent wetland.
T2-WET 8	0.02	acre(s)	(b)(1) Non-adjacent wetland.
T2-WET 9	0.02	acre(s)	(b)(1) Non-adjacent wetland.
T2-WET 10	0.15	acre(s)	(b)(1) Non-adjacent wetland.



**U.S. ARMY CORPS OF ENGINEERS
REGULATORY PROGRAM
APPROVED JURISDICTIONAL DETERMINATION FORM (INTERIM)
NAVIGABLE WATERS PROTECTION RULE**

Excluded waters ((b)(1) – (b)(12)): ⁴			
Exclusion Name	Exclusion Size	Exclusion ⁵	Rationale for Exclusion Determination
T2-WET 11	0.05	acre(s)	(b)(1) Non-adjacent wetland.
T2-WET 12	0.03	acre(s)	(b)(1) Non-adjacent wetland.
T2-WET 13	0.08	acre(s)	(b)(1) Non-adjacent wetland.
T2-WET 14	0.03	acre(s)	(b)(1) Non-adjacent wetland.
T2-WET 15	0.09	acre(s)	(b)(1) Non-adjacent wetland.
T2-WET 16	0.05	acre(s)	(b)(1) Non-adjacent wetland.



**U.S. ARMY CORPS OF ENGINEERS
REGULATORY PROGRAM
APPROVED JURISDICTIONAL DETERMINATION FORM (INTERIM)
NAVIGABLE WATERS PROTECTION RULE**

Excluded waters ((b)(1) – (b)(12)): ⁴			
Exclusion Name	Exclusion Size	Exclusion ⁵	Rationale for Exclusion Determination
T2-WET 17	0.02	acre(s)	(b)(1) Non-adjacent wetland.
T2-WET 18	0.03	acre(s)	(b)(1) Non-adjacent wetland.
T3-WET 1	0.03	acre(s)	(b)(1) Non-adjacent wetland.
T3-WET 2	0.02	acre(s)	(b)(1) Non-adjacent wetland.
T3-WET 3	0.04	acre(s)	(b)(1) Non-adjacent wetland.
T3-WET 4	0.02	acre(s)	(b)(1) Non-adjacent wetland.



**U.S. ARMY CORPS OF ENGINEERS
REGULATORY PROGRAM
APPROVED JURISDICTIONAL DETERMINATION FORM (INTERIM)
NAVIGABLE WATERS PROTECTION RULE**

Excluded waters ((b)(1) – (b)(12)): ⁴			
Exclusion Name	Exclusion Size	Exclusion ⁵	Rationale for Exclusion Determination
T3-WET 5	0.04	acre(s)	(b)(1) Non-adjacent wetland.
T3-WET 6	0.02	acre(s)	(b)(1) Non-adjacent wetland.
T3-WET 7	0.03	acre(s)	(b)(1) Non-adjacent wetland.
T3-WET 8	0.02	acre(s)	(b)(1) Non-adjacent wetland.
T3-WET 9	0.04	acre(s)	(b)(1) Non-adjacent wetland.
T3-WET 10	0.02	acre(s)	(b)(1) Non-adjacent wetland.



**U.S. ARMY CORPS OF ENGINEERS
REGULATORY PROGRAM
APPROVED JURISDICTIONAL DETERMINATION FORM (INTERIM)
NAVIGABLE WATERS PROTECTION RULE**

Excluded waters ((b)(1) – (b)(12)): ⁴				
Exclusion Name	Exclusion Size	Exclusion ⁵	Rationale for Exclusion Determination	
T3-WET 11	0.06	acre(s)	(b)(1) Non-adjacent wetland.	It is a palustrine emergent wetland that does not abut an (a)(1)-(a)(3) water. It is not located in a landscape position that would be flooded/inundated by an (a)(1)-(a)(3) water during a “typical year”. It is separated from an (a)(1)-(a)(3) water by more than a single natural or man-made barrier.
T3-WET 12	0.01	acre(s)	(b)(1) Non-adjacent wetland.	It is a palustrine emergent wetland that does not abut an (a)(1)-(a)(3) water. It is not located in a landscape position that would be flooded/inundated by an (a)(1)-(a)(3) water during a “typical year”. It is separated from an (a)(1)-(a)(3) water by more than a single natural or man-made barrier.
T3-WET 13	0.01	acre(s)	(b)(1) Non-adjacent wetland.	It is a palustrine emergent wetland that does not abut an (a)(1)-(a)(3) water. It is not located in a landscape position that would be flooded/inundated by an (a)(1)-(a)(3) water during a “typical year”. It is separated from an (a)(1)-(a)(3) water by more than a single natural or man-made barrier.
T4-POND 1	0.55	acre(s)	(b)(1) Lake/pond or impoundment that does not contribute surface water flow directly or indirectly to an (a)(1) water and is not inundated by flooding from an (a)(1)-(a)(3) water in a typical year.	It is a palustrine ponded wetland that does not abut an (a)(1)-(a)(3) water. It is not located in a landscape position that would be flooded/inundated by an (a)(1)-(a)(3) water during a “typical year”. It is separated from an (a)(1)-(a)(3) water by more than a single natural or man-made barrier.
T4-POND 2	0.11	acre(s)	(b)(1) Lake/pond or impoundment that does not contribute surface water flow directly or indirectly to an (a)(1) water and is not inundated by flooding from an (a)(1)-(a)(3) water in a typical year.	It is a palustrine ponded wetland that does not abut an (a)(1)-(a)(3) water. It is not located in a landscape position that would be flooded/inundated by an (a)(1)-(a)(3) water during a “typical year”. It is separated from an (a)(1)-(a)(3) water by more than a single natural or man-made barrier.



**U.S. ARMY CORPS OF ENGINEERS
REGULATORY PROGRAM
APPROVED JURISDICTIONAL DETERMINATION FORM (INTERIM)
NAVIGABLE WATERS PROTECTION RULE**

Excluded waters ((b)(1) – (b)(12)): ⁴				
Exclusion Name	Exclusion Size	Exclusion ⁵	Rationale for Exclusion Determination	
T4-WET 1	0.01	acre(s)	(b)(1) Non-adjacent wetland.	It is a palustrine emergent wetland that does not abut an (a)(1)-(a)(3) water. It is not located in a landscape position that would be flooded/inundated by an (a)(1)-(a)(3) water during a “typical year”. It is separated from an (a)(1)-(a)(3) water by more than a single natural or man-made barrier.
T4-WET 2	0.04	acre(s)	(b)(1) Non-adjacent wetland.	It is a palustrine emergent wetland that does not abut an (a)(1)-(a)(3) water. It is not located in a landscape position that would be flooded/inundated by an (a)(1)-(a)(3) water during a “typical year”. It is separated from an (a)(1)-(a)(3) water by more than a single natural or man-made barrier.
T4-WET 3	1.36	acre(s)	(b)(1) Non-adjacent wetland.	It is a palustrine emergent wetland that does not abut an (a)(1)-(a)(3) water. It is not located in a landscape position that would be flooded/inundated by an (a)(1)-(a)(3) water during a “typical year”. It is separated from an (a)(1)-(a)(3) water by more than a single natural or man-made barrier.
T4-WET 4	0.33	acre(s)	(b)(1) Non-adjacent wetland.	It is a palustrine emergent wetland that does not abut an (a)(1)-(a)(3) water. It is not located in a landscape position that would be flooded/inundated by an (a)(1)-(a)(3) water during a “typical year”. It is separated from an (a)(1)-(a)(3) water by more than a single natural or man-made barrier.
T4-WET 5	0.44	acre(s)	(b)(1) Non-adjacent wetland.	It is a palustrine emergent wetland that does not abut an (a)(1)-(a)(3) water. It is not located in a landscape position that would be flooded/inundated by an (a)(1)-(a)(3) water during a “typical year”. It is separated from an (a)(1)-(a)(3) water by more than a single natural or man-made barrier.
T4-WET 6	0.11	acre(s)	(b)(1) Non-adjacent wetland.	It is a palustrine emergent wetland that does not abut an (a)(1)-(a)(3) water. It is not located in a landscape position that would be flooded/inundated by an (a)(1)-(a)(3) water during a “typical year”. It is separated from an (a)(1)-(a)(3) water by more than a single natural or man-made barrier.



**U.S. ARMY CORPS OF ENGINEERS
REGULATORY PROGRAM
APPROVED JURISDICTIONAL DETERMINATION FORM (INTERIM)
NAVIGABLE WATERS PROTECTION RULE**

Excluded waters ((b)(1) – (b)(12)). ⁴			
Exclusion Name	Exclusion Size	Exclusion ⁵	Rationale for Exclusion Determination
NWI 1	0.01	acre(s)	(b)(1) Non-adjacent wetland.
NWI 2	0.03	acre(s)	(b)(1) Non-adjacent wetland.
NWI 3	0.03	acre(s)	(b)(1) Non-adjacent wetland.
NWI 4	0.04	acre(s)	(b)(1) Non-adjacent wetland.
NWI 5	0.04	acre(s)	(b)(1) Non-adjacent wetland.
NWI 6	0.07	acre(s)	(b)(1) Non-adjacent wetland.



**U.S. ARMY CORPS OF ENGINEERS
REGULATORY PROGRAM
APPROVED JURISDICTIONAL DETERMINATION FORM (INTERIM)
NAVIGABLE WATERS PROTECTION RULE**

Excluded waters ((b)(1) – (b)(12)): ⁴			
Exclusion Name	Exclusion Size	Exclusion ⁵	Rationale for Exclusion Determination
NWI 7	0.04	acre(s)	(b)(1) Non-adjacent wetland.
NWI 8	0.04	acre(s)	(b)(1) Non-adjacent wetland.
NWI 9	0.01	acre(s)	(b)(1) Non-adjacent wetland.
NWI 10	0.02	acre(s)	(b)(1) Non-adjacent wetland.
NWI 11	0.04	acre(s)	(b)(1) Non-adjacent wetland.
NWI 12	0.13	acre(s)	(b)(1) Non-adjacent wetland.



**U.S. ARMY CORPS OF ENGINEERS
REGULATORY PROGRAM
APPROVED JURISDICTIONAL DETERMINATION FORM (INTERIM)
NAVIGABLE WATERS PROTECTION RULE**

Excluded waters ((b)(1) – (b)(12)): ⁴				
Exclusion Name	Exclusion Size	Exclusion ⁵	Rationale for Exclusion Determination	
NWI 13	0.02	acre(s)	(b)(1) Non-adjacent wetland.	It is a palustrine emergent wetland that does not abut an (a)(1)-(a)(3) water. It is not located in a landscape position that would be flooded/inundated by an (a)(1)-(a)(3) water during a “typical year”. It is separated from an (a)(1)-(a)(3) water by more than a single natural or man-made barrier.
NWI 14	0.04	acre(s)	(b)(1) Non-adjacent wetland.	It is a palustrine emergent wetland that does not abut an (a)(1)-(a)(3) water. It is not located in a landscape position that would be flooded/inundated by an (a)(1)-(a)(3) water during a “typical year”. It is separated from an (a)(1)-(a)(3) water by more than a single natural or man-made barrier.
NWI 15	0.03	acre(s)	(b)(1) Non-adjacent wetland.	It is a palustrine emergent wetland that does not abut an (a)(1)-(a)(3) water. It is not located in a landscape position that would be flooded/inundated by an (a)(1)-(a)(3) water during a “typical year”. It is separated from an (a)(1)-(a)(3) water by more than a single natural or man-made barrier.
NWI 16	0.04	acre(s)	(b)(1) Non-adjacent wetland.	It is a palustrine emergent wetland that does not abut an (a)(1)-(a)(3) water. It is not located in a landscape position that would be flooded/inundated by an (a)(1)-(a)(3) water during a “typical year”. It is separated from an (a)(1)-(a)(3) water by more than a single natural or man-made barrier.
NWI 17	0.04	acre(s)	(b)(1) Non-adjacent wetland.	It is a palustrine emergent wetland that does not abut an (a)(1)-(a)(3) water. It is not located in a landscape position that would be flooded/inundated by an (a)(1)-(a)(3) water during a “typical year”. It is separated from an (a)(1)-(a)(3) water by more than a single natural or man-made barrier.
NWI 18	0.10	acre(s)	(b)(1) Non-adjacent wetland.	It is a palustrine emergent wetland that does not abut an (a)(1)-(a)(3) water. It is not located in a landscape position that would be flooded/inundated by an (a)(1)-(a)(3) water during a “typical year”. It is separated from an (a)(1)-(a)(3) water by more than a single natural or man-made barrier.



**U.S. ARMY CORPS OF ENGINEERS
REGULATORY PROGRAM
APPROVED JURISDICTIONAL DETERMINATION FORM (INTERIM)
NAVIGABLE WATERS PROTECTION RULE**

Excluded waters ((b)(1) – (b)(12)): ⁴				
Exclusion Name	Exclusion Size	Exclusion ⁵	Rationale for Exclusion Determination	
NWI 19	0.14	acre(s)	(b)(1) Non-adjacent wetland.	It is a palustrine emergent wetland that does not abut an (a)(1)-(a)(3) water. It is not located in a landscape position that would be flooded/inundated by an (a)(1)-(a)(3) water during a “typical year”. It is separated from an (a)(1)-(a)(3) water by more than a single natural or man-made barrier.
NWI 20	0.03	acre(s)	(b)(1) Non-adjacent wetland.	It is a palustrine emergent wetland that does not abut an (a)(1)-(a)(3) water. It is not located in a landscape position that would be flooded/inundated by an (a)(1)-(a)(3) water during a “typical year”. It is separated from an (a)(1)-(a)(3) water by more than a single natural or man-made barrier.
NWI 21	0.09	acre(s)	(b)(1) Non-adjacent wetland.	It is a palustrine emergent wetland that does not abut an (a)(1)-(a)(3) water. It is not located in a landscape position that would be flooded/inundated by an (a)(1)-(a)(3) water during a “typical year”. It is separated from an (a)(1)-(a)(3) water by more than a single natural or man-made barrier.
NWI 22	0.19	acre(s)	(b)(1) Non-adjacent wetland.	It is a palustrine emergent wetland that does not abut an (a)(1)-(a)(3) water. It is not located in a landscape position that would be flooded/inundated by an (a)(1)-(a)(3) water during a “typical year”. It is separated from an (a)(1)-(a)(3) water by more than a single natural or man-made barrier.
NWI 23	0.31	acre(s)	(b)(1) Non-adjacent wetland.	It is a palustrine emergent wetland that does not abut an (a)(1)-(a)(3) water. It is not located in a landscape position that would be flooded/inundated by an (a)(1)-(a)(3) water during a “typical year”. It is separated from an (a)(1)-(a)(3) water by more than a single natural or man-made barrier.
NWI 24	0.09	acre(s)	(b)(1) Non-adjacent wetland.	It is a palustrine emergent wetland that does not abut an (a)(1)-(a)(3) water. It is not located in a landscape position that would be flooded/inundated by an (a)(1)-(a)(3) water during a “typical year”. It is separated from an (a)(1)-(a)(3) water by more than a single natural or man-made barrier.



**U.S. ARMY CORPS OF ENGINEERS
REGULATORY PROGRAM
APPROVED JURISDICTIONAL DETERMINATION FORM (INTERIM)
NAVIGABLE WATERS PROTECTION RULE**

Excluded waters ((b)(1) – (b)(12)): ⁴			
Exclusion Name	Exclusion Size	Exclusion ⁵	Rationale for Exclusion Determination
NWI 25	0.03	acre(s)	(b)(1) Non-adjacent wetland.
NWI 26	0.05	acre(s)	(b)(1) Non-adjacent wetland.
NWI 27	0.02	acre(s)	(b)(1) Non-adjacent wetland.
NWI 28	0.09	acre(s)	(b)(1) Non-adjacent wetland.
NWI 29	0.02	acre(s)	(b)(1) Non-adjacent wetland.
NWI 30	0.05	acre(s)	(b)(1) Non-adjacent wetland.



**U.S. ARMY CORPS OF ENGINEERS
REGULATORY PROGRAM
APPROVED JURISDICTIONAL DETERMINATION FORM (INTERIM)
NAVIGABLE WATERS PROTECTION RULE**

Excluded waters ((b)(1) – (b)(12)): ⁴				
Exclusion Name	Exclusion Size	Exclusion ⁵	Rationale for Exclusion Determination	
NWI 31	0.07	acre(s)	(b)(1) Non-adjacent wetland.	It is a palustrine emergent wetland that does not abut an (a)(1)-(a)(3) water. It is not located in a landscape position that would be flooded/inundated by an (a)(1)-(a)(3) water during a “typical year”. It is separated from an (a)(1)-(a)(3) water by more than a single natural or man-made barrier.
NWI 32	0.02	acre(s)	(b)(1) Non-adjacent wetland.	It is a palustrine emergent wetland that does not abut an (a)(1)-(a)(3) water. It is not located in a landscape position that would be flooded/inundated by an (a)(1)-(a)(3) water during a “typical year”. It is separated from an (a)(1)-(a)(3) water by more than a single natural or man-made barrier.
NWI 33	0.07	acre(s)	(b)(1) Non-adjacent wetland.	It is a palustrine emergent wetland that does not abut an (a)(1)-(a)(3) water. It is not located in a landscape position that would be flooded/inundated by an (a)(1)-(a)(3) water during a “typical year”. It is separated from an (a)(1)-(a)(3) water by more than a single natural or man-made barrier.
NWI 34	0.04	acre(s)	(b)(1) Non-adjacent wetland.	It is a palustrine emergent wetland that does not abut an (a)(1)-(a)(3) water. It is not located in a landscape position that would be flooded/inundated by an (a)(1)-(a)(3) water during a “typical year”. It is separated from an (a)(1)-(a)(3) water by more than a single natural or man-made barrier.
NWI 35	0.03	acre(s)	(b)(1) Non-adjacent wetland.	It is a palustrine emergent wetland that does not abut an (a)(1)-(a)(3) water. It is not located in a landscape position that would be flooded/inundated by an (a)(1)-(a)(3) water during a “typical year”. It is separated from an (a)(1)-(a)(3) water by more than a single natural or man-made barrier.
NWI 36	0.05	acre(s)	(b)(1) Non-adjacent wetland.	It is a palustrine emergent wetland that does not abut an (a)(1)-(a)(3) water. It is not located in a landscape position that would be flooded/inundated by an (a)(1)-(a)(3) water during a “typical year”. It is separated from an (a)(1)-(a)(3) water by more than a single natural or man-made barrier.



**U.S. ARMY CORPS OF ENGINEERS
REGULATORY PROGRAM
APPROVED JURISDICTIONAL DETERMINATION FORM (INTERIM)
NAVIGABLE WATERS PROTECTION RULE**

Excluded waters ((b)(1) – (b)(12)): ⁴			
Exclusion Name	Exclusion Size	Exclusion ⁵	Rationale for Exclusion Determination
NWI 37	0.02	acre(s)	(b)(1) Non-adjacent wetland. It is a palustrine emergent wetland that does not abut an (a)(1)-(a)(3) water. It is not located in a landscape position that would be flooded/inundated by an (a)(1)-(a)(3) water during a “typical year”. It is separated from an (a)(1)-(a)(3) water by more than a single natural or man-made barrier.
NWI 38	0.02	acre(s)	(b)(1) Non-adjacent wetland. It is a palustrine emergent wetland that does not abut an (a)(1)-(a)(3) water. It is not located in a landscape position that would be flooded/inundated by an (a)(1)-(a)(3) water during a “typical year”. It is separated from an (a)(1)-(a)(3) water by more than a single natural or man-made barrier.
NWI 39	0.08	acre(s)	(b)(1) Non-adjacent wetland. It is a palustrine emergent wetland that does not abut an (a)(1)-(a)(3) water. It is not located in a landscape position that would be flooded/inundated by an (a)(1)-(a)(3) water during a “typical year”. It is separated from an (a)(1)-(a)(3) water by more than a single natural or man-made barrier.
NWI 40	0.07	acre(s)	(b)(1) Non-adjacent wetland. It is a palustrine emergent wetland that does not abut an (a)(1)-(a)(3) water. It is not located in a landscape position that would be flooded/inundated by an (a)(1)-(a)(3) water during a “typical year”. It is separated from an (a)(1)-(a)(3) water by more than a single natural or man-made barrier.
NWI 41	0.06	acre(s)	(b)(1) Non-adjacent wetland. It is a palustrine emergent wetland that does not abut an (a)(1)-(a)(3) water. It is not located in a landscape position that would be flooded/inundated by an (a)(1)-(a)(3) water during a “typical year”. It is separated from an (a)(1)-(a)(3) water by more than a single natural or man-made barrier.
NWI 42	0.04	acre(s)	(b)(1) Non-adjacent wetland. It is a palustrine emergent wetland that does not abut an (a)(1)-(a)(3) water. It is not located in a landscape position that would be flooded/inundated by an (a)(1)-(a)(3) water during a “typical year”. It is separated from an (a)(1)-(a)(3) water by more than a single natural or man-made barrier.



**U.S. ARMY CORPS OF ENGINEERS
REGULATORY PROGRAM
APPROVED JURISDICTIONAL DETERMINATION FORM (INTERIM)
NAVIGABLE WATERS PROTECTION RULE**

Excluded waters ((b)(1) – (b)(12)): ⁴				
Exclusion Name	Exclusion Size	Exclusion ⁵	Rationale for Exclusion Determination	
NWI 43	0.06	acre(s)	(b)(1) Non-adjacent wetland.	It is a palustrine emergent wetland that does not abut an (a)(1)-(a)(3) water. It is not located in a landscape position that would be flooded/inundated by an (a)(1)-(a)(3) water during a “typical year”. It is separated from an (a)(1)-(a)(3) water by more than a single natural or man-made barrier.
NWI 44	0.03	acre(s)	(b)(1) Non-adjacent wetland.	It is a palustrine emergent wetland that does not abut an (a)(1)-(a)(3) water. It is not located in a landscape position that would be flooded/inundated by an (a)(1)-(a)(3) water during a “typical year”. It is separated from an (a)(1)-(a)(3) water by more than a single natural or man-made barrier.
NWI 45	0.02	acre(s)	(b)(1) Non-adjacent wetland.	It is a palustrine emergent wetland that does not abut an (a)(1)-(a)(3) water. It is not located in a landscape position that would be flooded/inundated by an (a)(1)-(a)(3) water during a “typical year”. It is separated from an (a)(1)-(a)(3) water by more than a single natural or man-made barrier.
NWI 46	0.03	acre(s)	(b)(1) Non-adjacent wetland.	It is a palustrine emergent wetland that does not abut an (a)(1)-(a)(3) water. It is not located in a landscape position that would be flooded/inundated by an (a)(1)-(a)(3) water during a “typical year”. It is separated from an (a)(1)-(a)(3) water by more than a single natural or man-made barrier.
NWI 47	0.02	acre(s)	(b)(1) Non-adjacent wetland.	It is a palustrine emergent wetland that does not abut an (a)(1)-(a)(3) water. It is not located in a landscape position that would be flooded/inundated by an (a)(1)-(a)(3) water during a “typical year”. It is separated from an (a)(1)-(a)(3) water by more than a single natural or man-made barrier.
NWI 48	0.02	acre(s)	(b)(1) Non-adjacent wetland.	It is a palustrine emergent wetland that does not abut an (a)(1)-(a)(3) water. It is not located in a landscape position that would be flooded/inundated by an (a)(1)-(a)(3) water during a “typical year”. It is separated from an (a)(1)-(a)(3) water by more than a single natural or man-made barrier.



**U.S. ARMY CORPS OF ENGINEERS
REGULATORY PROGRAM
APPROVED JURISDICTIONAL DETERMINATION FORM (INTERIM)
NAVIGABLE WATERS PROTECTION RULE**

Excluded waters ((b)(1) – (b)(12)): ⁴				
Exclusion Name	Exclusion Size	Exclusion ⁵	Rationale for Exclusion Determination	
NWI 49	0.02	acre(s)	(b)(1) Non-adjacent wetland.	It is a palustrine emergent wetland that does not abut an (a)(1)-(a)(3) water. It is not located in a landscape position that would be flooded/inundated by an (a)(1)-(a)(3) water during a “typical year”. It is separated from an (a)(1)-(a)(3) water by more than a single natural or man-made barrier.
NWI 50	0.02	acre(s)	(b)(1) Non-adjacent wetland.	It is a palustrine emergent wetland that does not abut an (a)(1)-(a)(3) water. It is not located in a landscape position that would be flooded/inundated by an (a)(1)-(a)(3) water during a “typical year”. It is separated from an (a)(1)-(a)(3) water by more than a single natural or man-made barrier.
NWI 51	0.10	acre(s)	(b)(1) Non-adjacent wetland.	It is a palustrine emergent wetland that does not abut an (a)(1)-(a)(3) water. It is not located in a landscape position that would be flooded/inundated by an (a)(1)-(a)(3) water during a “typical year”. It is separated from an (a)(1)-(a)(3) water by more than a single natural or man-made barrier.
NWI 52	0.05	acre(s)	(b)(1) Non-adjacent wetland.	It is a palustrine emergent wetland that does not abut an (a)(1)-(a)(3) water. It is not located in a landscape position that would be flooded/inundated by an (a)(1)-(a)(3) water during a “typical year”. It is separated from an (a)(1)-(a)(3) water by more than a single natural or man-made barrier.
NWI 53	0.06	acre(s)	(b)(1) Non-adjacent wetland.	It is a palustrine emergent wetland that does not abut an (a)(1)-(a)(3) water. It is not located in a landscape position that would be flooded/inundated by an (a)(1)-(a)(3) water during a “typical year”. It is separated from an (a)(1)-(a)(3) water by more than a single natural or man-made barrier.
NWI 54	0.03	acre(s)	(b)(1) Non-adjacent wetland.	It is a palustrine emergent wetland that does not abut an (a)(1)-(a)(3) water. It is not located in a landscape position that would be flooded/inundated by an (a)(1)-(a)(3) water during a “typical year”. It is separated from an (a)(1)-(a)(3) water by more than a single natural or man-made barrier.



**U.S. ARMY CORPS OF ENGINEERS
REGULATORY PROGRAM
APPROVED JURISDICTIONAL DETERMINATION FORM (INTERIM)
NAVIGABLE WATERS PROTECTION RULE**

Excluded waters ((b)(1) – (b)(12)): ⁴			
Exclusion Name	Exclusion Size	Exclusion ⁵	Rationale for Exclusion Determination
NWI 55	0.09	acre(s)	(b)(1) Non-adjacent wetland. It is a palustrine emergent wetland that does not abut an (a)(1)-(a)(3) water. It is not located in a landscape position that would be flooded/inundated by an (a)(1)-(a)(3) water during a “typical year”. It is separated from an (a)(1)-(a)(3) water by more than a single natural or man-made barrier.
NWI 56	0.01	acre(s)	(b)(1) Non-adjacent wetland. It is a palustrine emergent wetland that does not abut an (a)(1)-(a)(3) water. It is not located in a landscape position that would be flooded/inundated by an (a)(1)-(a)(3) water during a “typical year”. It is separated from an (a)(1)-(a)(3) water by more than a single natural or man-made barrier.
NWI 57	0.04	acre(s)	(b)(1) Non-adjacent wetland. It is a palustrine emergent wetland that does not abut an (a)(1)-(a)(3) water. It is not located in a landscape position that would be flooded/inundated by an (a)(1)-(a)(3) water during a “typical year”. It is separated from an (a)(1)-(a)(3) water by more than a single natural or man-made barrier.
NWI 58	0.03	acre(s)	(b)(1) Non-adjacent wetland. It is a palustrine emergent wetland that does not abut an (a)(1)-(a)(3) water. It is not located in a landscape position that would be flooded/inundated by an (a)(1)-(a)(3) water during a “typical year”. It is separated from an (a)(1)-(a)(3) water by more than a single natural or man-made barrier.
NWI 59	0.02	acre(s)	(b)(1) Non-adjacent wetland. It is a palustrine emergent wetland that does not abut an (a)(1)-(a)(3) water. It is not located in a landscape position that would be flooded/inundated by an (a)(1)-(a)(3) water during a “typical year”. It is separated from an (a)(1)-(a)(3) water by more than a single natural or man-made barrier.
NWI 60	0.06	acre(s)	(b)(1) Non-adjacent wetland. It is a palustrine emergent wetland that does not abut an (a)(1)-(a)(3) water. It is not located in a landscape position that would be flooded/inundated by an (a)(1)-(a)(3) water during a “typical year”. It is separated from an (a)(1)-(a)(3) water by more than a single natural or man-made barrier.



**U.S. ARMY CORPS OF ENGINEERS
REGULATORY PROGRAM
APPROVED JURISDICTIONAL DETERMINATION FORM (INTERIM)
NAVIGABLE WATERS PROTECTION RULE**

Excluded waters ((b)(1) – (b)(12)): ⁴				
Exclusion Name	Exclusion Size	Exclusion ⁵	Rationale for Exclusion Determination	
NWI 61	0.03	acre(s)	(b)(1) Non-adjacent wetland.	It is a palustrine emergent wetland that does not abut an (a)(1)-(a)(3) water. It is not located in a landscape position that would be flooded/inundated by an (a)(1)-(a)(3) water during a “typical year”. It is separated from an (a)(1)-(a)(3) water by more than a single natural or man-made barrier.
NWI 62	0.06	acre(s)	(b)(1) Non-adjacent wetland.	It is a palustrine emergent wetland that does not abut an (a)(1)-(a)(3) water. It is not located in a landscape position that would be flooded/inundated by an (a)(1)-(a)(3) water during a “typical year”. It is separated from an (a)(1)-(a)(3) water by more than a single natural or man-made barrier.
NWI 63	0.01	acre(s)	(b)(1) Non-adjacent wetland.	It is a palustrine emergent wetland that does not abut an (a)(1)-(a)(3) water. It is not located in a landscape position that would be flooded/inundated by an (a)(1)-(a)(3) water during a “typical year”. It is separated from an (a)(1)-(a)(3) water by more than a single natural or man-made barrier.
NWI 64	0.02	acre(s)	(b)(1) Non-adjacent wetland.	It is a palustrine emergent wetland that does not abut an (a)(1)-(a)(3) water. It is not located in a landscape position that would be flooded/inundated by an (a)(1)-(a)(3) water during a “typical year”. It is separated from an (a)(1)-(a)(3) water by more than a single natural or man-made barrier.
NWI 65	0.03	acre(s)	(b)(1) Non-adjacent wetland.	It is a palustrine emergent wetland that does not abut an (a)(1)-(a)(3) water. It is not located in a landscape position that would be flooded/inundated by an (a)(1)-(a)(3) water during a “typical year”. It is separated from an (a)(1)-(a)(3) water by more than a single natural or man-made barrier.
NWI 66	0.02	acre(s)	(b)(1) Non-adjacent wetland.	It is a palustrine emergent wetland that does not abut an (a)(1)-(a)(3) water. It is not located in a landscape position that would be flooded/inundated by an (a)(1)-(a)(3) water during a “typical year”. It is separated from an (a)(1)-(a)(3) water by more than a single natural or man-made barrier.



**U.S. ARMY CORPS OF ENGINEERS
REGULATORY PROGRAM
APPROVED JURISDICTIONAL DETERMINATION FORM (INTERIM)
NAVIGABLE WATERS PROTECTION RULE**

Excluded waters ((b)(1) – (b)(12)): ⁴				
Exclusion Name	Exclusion Size	Exclusion ⁵	Rationale for Exclusion Determination	
NWI 67	0.12	acre(s)	(b)(1) Non-adjacent wetland.	It is a palustrine emergent wetland that does not abut an (a)(1)-(a)(3) water. It is not located in a landscape position that would be flooded/inundated by an (a)(1)-(a)(3) water during a “typical year”. It is separated from an (a)(1)-(a)(3) water by more than a single natural or man-made barrier.
NWI 68	0.09	acre(s)	(b)(1) Non-adjacent wetland.	It is a palustrine emergent wetland that does not abut an (a)(1)-(a)(3) water. It is not located in a landscape position that would be flooded/inundated by an (a)(1)-(a)(3) water during a “typical year”. It is separated from an (a)(1)-(a)(3) water by more than a single natural or man-made barrier.
NWI 69	0.03	acre(s)	(b)(1) Non-adjacent wetland.	It is a palustrine emergent wetland that does not abut an (a)(1)-(a)(3) water. It is not located in a landscape position that would be flooded/inundated by an (a)(1)-(a)(3) water during a “typical year”. It is separated from an (a)(1)-(a)(3) water by more than a single natural or man-made barrier.
NWI 70	0.02	acre(s)	(b)(1) Non-adjacent wetland.	It is a palustrine emergent wetland that does not abut an (a)(1)-(a)(3) water. It is not located in a landscape position that would be flooded/inundated by an (a)(1)-(a)(3) water during a “typical year”. It is separated from an (a)(1)-(a)(3) water by more than a single natural or man-made barrier.
NWI 71	0.05	acre(s)	(b)(1) Non-adjacent wetland.	It is a palustrine emergent wetland that does not abut an (a)(1)-(a)(3) water. It is not located in a landscape position that would be flooded/inundated by an (a)(1)-(a)(3) water during a “typical year”. It is separated from an (a)(1)-(a)(3) water by more than a single natural or man-made barrier.
NWI 72	0.04	acre(s)	(b)(1) Non-adjacent wetland.	It is a palustrine emergent wetland that does not abut an (a)(1)-(a)(3) water. It is not located in a landscape position that would be flooded/inundated by an (a)(1)-(a)(3) water during a “typical year”. It is separated from an (a)(1)-(a)(3) water by more than a single natural or man-made barrier.



**U.S. ARMY CORPS OF ENGINEERS
REGULATORY PROGRAM
APPROVED JURISDICTIONAL DETERMINATION FORM (INTERIM)
NAVIGABLE WATERS PROTECTION RULE**

Excluded waters ((b)(1) – (b)(12)): ⁴				
Exclusion Name	Exclusion Size	Exclusion ⁵	Rationale for Exclusion Determination	
NWI 73	0.02	acre(s)	(b)(1) Non-adjacent wetland.	It is a palustrine emergent wetland that does not abut an (a)(1)-(a)(3) water. It is not located in a landscape position that would be flooded/inundated by an (a)(1)-(a)(3) water during a “typical year”. It is separated from an (a)(1)-(a)(3) water by more than a single natural or man-made barrier.
NWI 74	0.03	acre(s)	(b)(1) Non-adjacent wetland.	It is a palustrine emergent wetland that does not abut an (a)(1)-(a)(3) water. It is not located in a landscape position that would be flooded/inundated by an (a)(1)-(a)(3) water during a “typical year”. It is separated from an (a)(1)-(a)(3) water by more than a single natural or man-made barrier.
NWI 75	0.05	acre(s)	(b)(1) Non-adjacent wetland.	It is a palustrine emergent wetland that does not abut an (a)(1)-(a)(3) water. It is not located in a landscape position that would be flooded/inundated by an (a)(1)-(a)(3) water during a “typical year”. It is separated from an (a)(1)-(a)(3) water by more than a single natural or man-made barrier.
NWI 76	0.02	acre(s)	(b)(1) Non-adjacent wetland.	It is a palustrine emergent wetland that does not abut an (a)(1)-(a)(3) water. It is not located in a landscape position that would be flooded/inundated by an (a)(1)-(a)(3) water during a “typical year”. It is separated from an (a)(1)-(a)(3) water by more than a single natural or man-made barrier.
NWI 77	0.03	acre(s)	(b)(1) Non-adjacent wetland.	It is a palustrine emergent wetland that does not abut an (a)(1)-(a)(3) water. It is not located in a landscape position that would be flooded/inundated by an (a)(1)-(a)(3) water during a “typical year”. It is separated from an (a)(1)-(a)(3) water by more than a single natural or man-made barrier.
NWI 78	0.05	acre(s)	(b)(1) Non-adjacent wetland.	It is a palustrine emergent wetland that does not abut an (a)(1)-(a)(3) water. It is not located in a landscape position that would be flooded/inundated by an (a)(1)-(a)(3) water during a “typical year”. It is separated from an (a)(1)-(a)(3) water by more than a single natural or man-made barrier.



**U.S. ARMY CORPS OF ENGINEERS
REGULATORY PROGRAM
APPROVED JURISDICTIONAL DETERMINATION FORM (INTERIM)
NAVIGABLE WATERS PROTECTION RULE**

Excluded waters ((b)(1) – (b)(12)). ⁴			
Exclusion Name	Exclusion Size	Exclusion ⁵	Rationale for Exclusion Determination
NWI 79	0.02	acre(s)	(b)(1) Non-adjacent wetland. It is a palustrine emergent wetland that does not abut an (a)(1)-(a)(3) water. It is not located in a landscape position that would be flooded/inundated by an (a)(1)-(a)(3) water during a “typical year”. It is separated from an (a)(1)-(a)(3) water by more than a single natural or man-made barrier.
NWI 80	0.03	acre(s)	(b)(1) Non-adjacent wetland. It is a palustrine emergent wetland that does not abut an (a)(1)-(a)(3) water. It is not located in a landscape position that would be flooded/inundated by an (a)(1)-(a)(3) water during a “typical year”. It is separated from an (a)(1)-(a)(3) water by more than a single natural or man-made barrier.
NWI 81	0.02	acre(s)	(b)(1) Non-adjacent wetland. It is a palustrine emergent wetland that does not abut an (a)(1)-(a)(3) water. It is not located in a landscape position that would be flooded/inundated by an (a)(1)-(a)(3) water during a “typical year”. It is separated from an (a)(1)-(a)(3) water by more than a single natural or man-made barrier.
NWI 82	0.05	acre(s)	(b)(1) Non-adjacent wetland. It is a palustrine emergent wetland that does not abut an (a)(1)-(a)(3) water. It is not located in a landscape position that would be flooded/inundated by an (a)(1)-(a)(3) water during a “typical year”. It is separated from an (a)(1)-(a)(3) water by more than a single natural or man-made barrier.
NWI 83	0.06	acre(s)	(b)(1) Non-adjacent wetland. It is a palustrine emergent wetland that does not abut an (a)(1)-(a)(3) water. It is not located in a landscape position that would be flooded/inundated by an (a)(1)-(a)(3) water during a “typical year”. It is separated from an (a)(1)-(a)(3) water by more than a single natural or man-made barrier.
NWI 84	0.04	acre(s)	(b)(1) Non-adjacent wetland. It is a palustrine emergent wetland that does not abut an (a)(1)-(a)(3) water. It is not located in a landscape position that would be flooded/inundated by an (a)(1)-(a)(3) water during a “typical year”. It is separated from an (a)(1)-(a)(3) water by more than a single natural or man-made barrier.



**U.S. ARMY CORPS OF ENGINEERS
REGULATORY PROGRAM
APPROVED JURISDICTIONAL DETERMINATION FORM (INTERIM)
NAVIGABLE WATERS PROTECTION RULE**

Excluded waters ((b)(1) – (b)(12)): ⁴				
Exclusion Name	Exclusion Size	Exclusion ⁵	Rationale for Exclusion Determination	
NWI 85	0.03	acre(s)	(b)(1) Non-adjacent wetland.	It is a palustrine emergent wetland that does not abut an (a)(1)-(a)(3) water. It is not located in a landscape position that would be flooded/inundated by an (a)(1)-(a)(3) water during a “typical year”. It is separated from an (a)(1)-(a)(3) water by more than a single natural or man-made barrier.
NWI 86	0.01	acre(s)	(b)(1) Non-adjacent wetland.	It is a palustrine emergent wetland that does not abut an (a)(1)-(a)(3) water. It is not located in a landscape position that would be flooded/inundated by an (a)(1)-(a)(3) water during a “typical year”. It is separated from an (a)(1)-(a)(3) water by more than a single natural or man-made barrier.
NWI 87	0.02	acre(s)	(b)(1) Non-adjacent wetland.	It is a palustrine emergent wetland that does not abut an (a)(1)-(a)(3) water. It is not located in a landscape position that would be flooded/inundated by an (a)(1)-(a)(3) water during a “typical year”. It is separated from an (a)(1)-(a)(3) water by more than a single natural or man-made barrier.
NWI 88	0.03	acre(s)	(b)(1) Non-adjacent wetland.	It is a palustrine emergent wetland that does not abut an (a)(1)-(a)(3) water. It is not located in a landscape position that would be flooded/inundated by an (a)(1)-(a)(3) water during a “typical year”. It is separated from an (a)(1)-(a)(3) water by more than a single natural or man-made barrier.
NWI 89	0.04	acre(s)	(b)(1) Non-adjacent wetland.	It is a palustrine emergent wetland that does not abut an (a)(1)-(a)(3) water. It is not located in a landscape position that would be flooded/inundated by an (a)(1)-(a)(3) water during a “typical year”. It is separated from an (a)(1)-(a)(3) water by more than a single natural or man-made barrier.
NWI 90	0.03	acre(s)	(b)(1) Non-adjacent wetland.	It is a palustrine emergent wetland that does not abut an (a)(1)-(a)(3) water. It is not located in a landscape position that would be flooded/inundated by an (a)(1)-(a)(3) water during a “typical year”. It is separated from an (a)(1)-(a)(3) water by more than a single natural or man-made barrier.



**U.S. ARMY CORPS OF ENGINEERS
REGULATORY PROGRAM
APPROVED JURISDICTIONAL DETERMINATION FORM (INTERIM)
NAVIGABLE WATERS PROTECTION RULE**

Excluded waters ((b)(1) – (b)(12)): ⁴			
Exclusion Name	Exclusion Size	Exclusion ⁵	Rationale for Exclusion Determination
NWI 91	0.08	acre(s)	(b)(1) Non-adjacent wetland. It is a palustrine emergent wetland that does not abut an (a)(1)-(a)(3) water. It is not located in a landscape position that would be flooded/inundated by an (a)(1)-(a)(3) water during a “typical year”. It is separated from an (a)(1)-(a)(3) water by more than a single natural or man-made barrier.
NWI 92	0.03	acre(s)	(b)(1) Non-adjacent wetland. It is a palustrine emergent wetland that does not abut an (a)(1)-(a)(3) water. It is not located in a landscape position that would be flooded/inundated by an (a)(1)-(a)(3) water during a “typical year”. It is separated from an (a)(1)-(a)(3) water by more than a single natural or man-made barrier.
NWI 93	0.02	acre(s)	(b)(1) Non-adjacent wetland. It is a palustrine emergent wetland that does not abut an (a)(1)-(a)(3) water. It is not located in a landscape position that would be flooded/inundated by an (a)(1)-(a)(3) water during a “typical year”. It is separated from an (a)(1)-(a)(3) water by more than a single natural or man-made barrier.
NWI 94	0.02	acre(s)	(b)(1) Non-adjacent wetland. It is a palustrine emergent wetland that does not abut an (a)(1)-(a)(3) water. It is not located in a landscape position that would be flooded/inundated by an (a)(1)-(a)(3) water during a “typical year”. It is separated from an (a)(1)-(a)(3) water by more than a single natural or man-made barrier.
NWI 95	0.06	acre(s)	(b)(1) Non-adjacent wetland. It is a palustrine emergent wetland that does not abut an (a)(1)-(a)(3) water. It is not located in a landscape position that would be flooded/inundated by an (a)(1)-(a)(3) water during a “typical year”. It is separated from an (a)(1)-(a)(3) water by more than a single natural or man-made barrier.
NWI 96	0.04	acre(s)	(b)(1) Non-adjacent wetland. It is a palustrine emergent wetland that does not abut an (a)(1)-(a)(3) water. It is not located in a landscape position that would be flooded/inundated by an (a)(1)-(a)(3) water during a “typical year”. It is separated from an (a)(1)-(a)(3) water by more than a single natural or man-made barrier.



**U.S. ARMY CORPS OF ENGINEERS
REGULATORY PROGRAM
APPROVED JURISDICTIONAL DETERMINATION FORM (INTERIM)
NAVIGABLE WATERS PROTECTION RULE**

Excluded waters ((b)(1) – (b)(12)): ⁴				
Exclusion Name	Exclusion Size	Exclusion ⁵	Rationale for Exclusion Determination	
NWI 97	0.02	acre(s)	(b)(1) Non-adjacent wetland.	It is a palustrine emergent wetland that does not abut an (a)(1)-(a)(3) water. It is not located in a landscape position that would be flooded/inundated by an (a)(1)-(a)(3) water during a “typical year”. It is separated from an (a)(1)-(a)(3) water by more than a single natural or man-made barrier.
NWI 98	0.03	acre(s)	(b)(1) Non-adjacent wetland.	It is a palustrine emergent wetland that does not abut an (a)(1)-(a)(3) water. It is not located in a landscape position that would be flooded/inundated by an (a)(1)-(a)(3) water during a “typical year”. It is separated from an (a)(1)-(a)(3) water by more than a single natural or man-made barrier.
NWI 99	0.03	acre(s)	(b)(1) Non-adjacent wetland.	It is a palustrine emergent wetland that does not abut an (a)(1)-(a)(3) water. It is not located in a landscape position that would be flooded/inundated by an (a)(1)-(a)(3) water during a “typical year”. It is separated from an (a)(1)-(a)(3) water by more than a single natural or man-made barrier.
NWI 100	0.04	acre(s)	(b)(1) Non-adjacent wetland.	It is a palustrine emergent wetland that does not abut an (a)(1)-(a)(3) water. It is not located in a landscape position that would be flooded/inundated by an (a)(1)-(a)(3) water during a “typical year”. It is separated from an (a)(1)-(a)(3) water by more than a single natural or man-made barrier.
NWI 101	0.03	acre(s)	(b)(1) Non-adjacent wetland.	It is a palustrine emergent wetland that does not abut an (a)(1)-(a)(3) water. It is not located in a landscape position that would be flooded/inundated by an (a)(1)-(a)(3) water during a “typical year”. It is separated from an (a)(1)-(a)(3) water by more than a single natural or man-made barrier.
NWI 102	0.03	acre(s)	(b)(1) Non-adjacent wetland.	It is a palustrine emergent wetland that does not abut an (a)(1)-(a)(3) water. It is not located in a landscape position that would be flooded/inundated by an (a)(1)-(a)(3) water during a “typical year”. It is separated from an (a)(1)-(a)(3) water by more than a single natural or man-made barrier.



**U.S. ARMY CORPS OF ENGINEERS
REGULATORY PROGRAM
APPROVED JURISDICTIONAL DETERMINATION FORM (INTERIM)
NAVIGABLE WATERS PROTECTION RULE**

Excluded waters ((b)(1) – (b)(12)): ⁴				
Exclusion Name	Exclusion Size	Exclusion ⁵	Rationale for Exclusion Determination	
NWI 103	0.02	acre(s)	(b)(1) Non-adjacent wetland.	It is a palustrine emergent wetland that does not abut an (a)(1)-(a)(3) water. It is not located in a landscape position that would be flooded/inundated by an (a)(1)-(a)(3) water during a “typical year”. It is separated from an (a)(1)-(a)(3) water by more than a single natural or man-made barrier.
NWI 104	0.02	acre(s)	(b)(1) Non-adjacent wetland.	It is a palustrine emergent wetland that does not abut an (a)(1)-(a)(3) water. It is not located in a landscape position that would be flooded/inundated by an (a)(1)-(a)(3) water during a “typical year”. It is separated from an (a)(1)-(a)(3) water by more than a single natural or man-made barrier.
NWI 105	0.02	acre(s)	(b)(1) Non-adjacent wetland.	It is a palustrine emergent wetland that does not abut an (a)(1)-(a)(3) water. It is not located in a landscape position that would be flooded/inundated by an (a)(1)-(a)(3) water during a “typical year”. It is separated from an (a)(1)-(a)(3) water by more than a single natural or man-made barrier.
NWI 106	0.03	acre(s)	(b)(1) Non-adjacent wetland.	It is a palustrine emergent wetland that does not abut an (a)(1)-(a)(3) water. It is not located in a landscape position that would be flooded/inundated by an (a)(1)-(a)(3) water during a “typical year”. It is separated from an (a)(1)-(a)(3) water by more than a single natural or man-made barrier.
NWI 107	0.05	acre(s)	(b)(1) Non-adjacent wetland.	It is a palustrine emergent wetland that does not abut an (a)(1)-(a)(3) water. It is not located in a landscape position that would be flooded/inundated by an (a)(1)-(a)(3) water during a “typical year”. It is separated from an (a)(1)-(a)(3) water by more than a single natural or man-made barrier.
NWI 108	0.02	acre(s)	(b)(1) Non-adjacent wetland.	It is a palustrine emergent wetland that does not abut an (a)(1)-(a)(3) water. It is not located in a landscape position that would be flooded/inundated by an (a)(1)-(a)(3) water during a “typical year”. It is separated from an (a)(1)-(a)(3) water by more than a single natural or man-made barrier.



**U.S. ARMY CORPS OF ENGINEERS
REGULATORY PROGRAM
APPROVED JURISDICTIONAL DETERMINATION FORM (INTERIM)
NAVIGABLE WATERS PROTECTION RULE**

Excluded waters ((b)(1) – (b)(12)): ⁴				
Exclusion Name	Exclusion Size	Exclusion ⁵	Rationale for Exclusion Determination	
NWI 109	0.04	acre(s)	(b)(1) Non-adjacent wetland.	It is a palustrine emergent wetland that does not abut an (a)(1)-(a)(3) water. It is not located in a landscape position that would be flooded/inundated by an (a)(1)-(a)(3) water during a “typical year”. It is separated from an (a)(1)-(a)(3) water by more than a single natural or man-made barrier.
NWI 110	0.02	acre(s)	(b)(1) Non-adjacent wetland.	It is a palustrine emergent wetland that does not abut an (a)(1)-(a)(3) water. It is not located in a landscape position that would be flooded/inundated by an (a)(1)-(a)(3) water during a “typical year”. It is separated from an (a)(1)-(a)(3) water by more than a single natural or man-made barrier.
NWI 111	0.02	acre(s)	(b)(1) Non-adjacent wetland.	It is a palustrine emergent wetland that does not abut an (a)(1)-(a)(3) water. It is not located in a landscape position that would be flooded/inundated by an (a)(1)-(a)(3) water during a “typical year”. It is separated from an (a)(1)-(a)(3) water by more than a single natural or man-made barrier.
NWI 112	0.03	acre(s)	(b)(1) Non-adjacent wetland.	It is a palustrine emergent wetland that does not abut an (a)(1)-(a)(3) water. It is not located in a landscape position that would be flooded/inundated by an (a)(1)-(a)(3) water during a “typical year”. It is separated from an (a)(1)-(a)(3) water by more than a single natural or man-made barrier.
NWI 113	0.02	acre(s)	(b)(1) Non-adjacent wetland.	It is a palustrine emergent wetland that does not abut an (a)(1)-(a)(3) water. It is not located in a landscape position that would be flooded/inundated by an (a)(1)-(a)(3) water during a “typical year”. It is separated from an (a)(1)-(a)(3) water by more than a single natural or man-made barrier.
NWI 114	0.03	acre(s)	(b)(1) Non-adjacent wetland.	It is a palustrine emergent wetland that does not abut an (a)(1)-(a)(3) water. It is not located in a landscape position that would be flooded/inundated by an (a)(1)-(a)(3) water during a “typical year”. It is separated from an (a)(1)-(a)(3) water by more than a single natural or man-made barrier.



**U.S. ARMY CORPS OF ENGINEERS
REGULATORY PROGRAM
APPROVED JURISDICTIONAL DETERMINATION FORM (INTERIM)
NAVIGABLE WATERS PROTECTION RULE**

Excluded waters ((b)(1) – (b)(12)): ⁴			
Exclusion Name	Exclusion Size	Exclusion ⁵	Rationale for Exclusion Determination
NWI 115	0.02	acre(s)	(b)(1) Non-adjacent wetland.
NWI 116	0.03	acre(s)	(b)(1) Non-adjacent wetland.
NWI 117	0.08	acre(s)	(b)(1) Non-adjacent wetland.
NWI 118	0.05	acre(s)	(b)(1) Non-adjacent wetland.
NWI 119	0.04	acre(s)	(b)(1) Non-adjacent wetland.
NWI 120	0.01	acre(s)	(b)(1) Non-adjacent wetland.



**U.S. ARMY CORPS OF ENGINEERS
REGULATORY PROGRAM
APPROVED JURISDICTIONAL DETERMINATION FORM (INTERIM)
NAVIGABLE WATERS PROTECTION RULE**

Excluded waters ((b)(1) – (b)(12)): ⁴				
Exclusion Name	Exclusion Size	Exclusion ⁵	Rationale for Exclusion Determination	
NWI 121	0.02	acre(s)	(b)(1) Non-adjacent wetland.	It is a palustrine emergent wetland that does not abut an (a)(1)-(a)(3) water. It is not located in a landscape position that would be flooded/inundated by an (a)(1)-(a)(3) water during a “typical year”. It is separated from an (a)(1)-(a)(3) water by more than a single natural or man-made barrier.
NWI 122	0.04	acre(s)	(b)(1) Non-adjacent wetland.	It is a palustrine emergent wetland that does not abut an (a)(1)-(a)(3) water. It is not located in a landscape position that would be flooded/inundated by an (a)(1)-(a)(3) water during a “typical year”. It is separated from an (a)(1)-(a)(3) water by more than a single natural or man-made barrier.
NWI 123	0.06	acre(s)	(b)(1) Non-adjacent wetland.	It is a palustrine emergent wetland that does not abut an (a)(1)-(a)(3) water. It is not located in a landscape position that would be flooded/inundated by an (a)(1)-(a)(3) water during a “typical year”. It is separated from an (a)(1)-(a)(3) water by more than a single natural or man-made barrier.
NWI 124	0.02	acre(s)	(b)(1) Non-adjacent wetland.	It is a palustrine emergent wetland that does not abut an (a)(1)-(a)(3) water. It is not located in a landscape position that would be flooded/inundated by an (a)(1)-(a)(3) water during a “typical year”. It is separated from an (a)(1)-(a)(3) water by more than a single natural or man-made barrier.
NWI 125	0.03	acre(s)	(b)(1) Non-adjacent wetland.	It is a palustrine emergent wetland that does not abut an (a)(1)-(a)(3) water. It is not located in a landscape position that would be flooded/inundated by an (a)(1)-(a)(3) water during a “typical year”. It is separated from an (a)(1)-(a)(3) water by more than a single natural or man-made barrier.
NWI 126	0.03	acre(s)	(b)(1) Non-adjacent wetland.	It is a palustrine emergent wetland that does not abut an (a)(1)-(a)(3) water. It is not located in a landscape position that would be flooded/inundated by an (a)(1)-(a)(3) water during a “typical year”. It is separated from an (a)(1)-(a)(3) water by more than a single natural or man-made barrier.



**U.S. ARMY CORPS OF ENGINEERS
REGULATORY PROGRAM
APPROVED JURISDICTIONAL DETERMINATION FORM (INTERIM)
NAVIGABLE WATERS PROTECTION RULE**

Excluded waters ((b)(1) – (b)(12)): ⁴				
Exclusion Name	Exclusion Size	Exclusion ⁵	Rationale for Exclusion Determination	
NWI 127	0.02	acre(s)	(b)(1) Non-adjacent wetland.	It is a palustrine emergent wetland that does not abut an (a)(1)-(a)(3) water. It is not located in a landscape position that would be flooded/inundated by an (a)(1)-(a)(3) water during a “typical year”. It is separated from an (a)(1)-(a)(3) water by more than a single natural or man-made barrier.
NWI 128	0.02	acre(s)	(b)(1) Non-adjacent wetland.	It is a palustrine emergent wetland that does not abut an (a)(1)-(a)(3) water. It is not located in a landscape position that would be flooded/inundated by an (a)(1)-(a)(3) water during a “typical year”. It is separated from an (a)(1)-(a)(3) water by more than a single natural or man-made barrier.
NWI 129	0.02	acre(s)	(b)(1) Non-adjacent wetland.	It is a palustrine emergent wetland that does not abut an (a)(1)-(a)(3) water. It is not located in a landscape position that would be flooded/inundated by an (a)(1)-(a)(3) water during a “typical year”. It is separated from an (a)(1)-(a)(3) water by more than a single natural or man-made barrier.
NWI 130	0.04	acre(s)	(b)(1) Non-adjacent wetland.	It is a palustrine emergent wetland that does not abut an (a)(1)-(a)(3) water. It is not located in a landscape position that would be flooded/inundated by an (a)(1)-(a)(3) water during a “typical year”. It is separated from an (a)(1)-(a)(3) water by more than a single natural or man-made barrier.
NWI 131	0.01	acre(s)	(b)(1) Non-adjacent wetland.	It is a palustrine emergent wetland that does not abut an (a)(1)-(a)(3) water. It is not located in a landscape position that would be flooded/inundated by an (a)(1)-(a)(3) water during a “typical year”. It is separated from an (a)(1)-(a)(3) water by more than a single natural or man-made barrier.
NWI 132	0.04	acre(s)	(b)(1) Non-adjacent wetland.	It is a palustrine emergent wetland that does not abut an (a)(1)-(a)(3) water. It is not located in a landscape position that would be flooded/inundated by an (a)(1)-(a)(3) water during a “typical year”. It is separated from an (a)(1)-(a)(3) water by more than a single natural or man-made barrier.



**U.S. ARMY CORPS OF ENGINEERS
REGULATORY PROGRAM
APPROVED JURISDICTIONAL DETERMINATION FORM (INTERIM)
NAVIGABLE WATERS PROTECTION RULE**

Excluded waters ((b)(1) – (b)(12)): ⁴			
Exclusion Name	Exclusion Size	Exclusion ⁵	Rationale for Exclusion Determination
NWI 133	0.03	acre(s)	(b)(1) Non-adjacent wetland. It is a palustrine emergent wetland that does not abut an (a)(1)-(a)(3) water. It is not located in a landscape position that would be flooded/inundated by an (a)(1)-(a)(3) water during a “typical year”. It is separated from an (a)(1)-(a)(3) water by more than a single natural or man-made barrier.
NWI 134	0.03	acre(s)	(b)(1) Non-adjacent wetland. It is a palustrine emergent wetland that does not abut an (a)(1)-(a)(3) water. It is not located in a landscape position that would be flooded/inundated by an (a)(1)-(a)(3) water during a “typical year”. It is separated from an (a)(1)-(a)(3) water by more than a single natural or man-made barrier.
NWI 135	0.06	acre(s)	(b)(1) Non-adjacent wetland. It is a palustrine emergent wetland that does not abut an (a)(1)-(a)(3) water. It is not located in a landscape position that would be flooded/inundated by an (a)(1)-(a)(3) water during a “typical year”. It is separated from an (a)(1)-(a)(3) water by more than a single natural or man-made barrier.
NWI 136	0.02	acre(s)	(b)(1) Non-adjacent wetland. It is a palustrine emergent wetland that does not abut an (a)(1)-(a)(3) water. It is not located in a landscape position that would be flooded/inundated by an (a)(1)-(a)(3) water during a “typical year”. It is separated from an (a)(1)-(a)(3) water by more than a single natural or man-made barrier.
NWI 137	0.04	acre(s)	(b)(1) Non-adjacent wetland. It is a palustrine emergent wetland that does not abut an (a)(1)-(a)(3) water. It is not located in a landscape position that would be flooded/inundated by an (a)(1)-(a)(3) water during a “typical year”. It is separated from an (a)(1)-(a)(3) water by more than a single natural or man-made barrier.
NWI 138	0.02	acre(s)	(b)(1) Non-adjacent wetland. It is a palustrine emergent wetland that does not abut an (a)(1)-(a)(3) water. It is not located in a landscape position that would be flooded/inundated by an (a)(1)-(a)(3) water during a “typical year”. It is separated from an (a)(1)-(a)(3) water by more than a single natural or man-made barrier.



**U.S. ARMY CORPS OF ENGINEERS
REGULATORY PROGRAM
APPROVED JURISDICTIONAL DETERMINATION FORM (INTERIM)
NAVIGABLE WATERS PROTECTION RULE**

Excluded waters ((b)(1) – (b)(12)): ⁴			
Exclusion Name	Exclusion Size	Exclusion ⁵	Rationale for Exclusion Determination
NWI 139	0.02	acre(s)	(b)(1) Non-adjacent wetland. It is a palustrine emergent wetland that does not abut an (a)(1)-(a)(3) water. It is not located in a landscape position that would be flooded/inundated by an (a)(1)-(a)(3) water during a “typical year”. It is separated from an (a)(1)-(a)(3) water by more than a single natural or man-made barrier.
NWI 140	0.04	acre(s)	(b)(1) Non-adjacent wetland. It is a palustrine emergent wetland that does not abut an (a)(1)-(a)(3) water. It is not located in a landscape position that would be flooded/inundated by an (a)(1)-(a)(3) water during a “typical year”. It is separated from an (a)(1)-(a)(3) water by more than a single natural or man-made barrier.
NWI 141	0.11	acre(s)	(b)(1) Non-adjacent wetland. It is a palustrine emergent wetland that does not abut an (a)(1)-(a)(3) water. It is not located in a landscape position that would be flooded/inundated by an (a)(1)-(a)(3) water during a “typical year”. It is separated from an (a)(1)-(a)(3) water by more than a single natural or man-made barrier.
NWI 142	0.05	acre(s)	(b)(1) Non-adjacent wetland. It is a palustrine emergent wetland that does not abut an (a)(1)-(a)(3) water. It is not located in a landscape position that would be flooded/inundated by an (a)(1)-(a)(3) water during a “typical year”. It is separated from an (a)(1)-(a)(3) water by more than a single natural or man-made barrier.
NWI 143	0.03	acre(s)	(b)(1) Non-adjacent wetland. It is a palustrine emergent wetland that does not abut an (a)(1)-(a)(3) water. It is not located in a landscape position that would be flooded/inundated by an (a)(1)-(a)(3) water during a “typical year”. It is separated from an (a)(1)-(a)(3) water by more than a single natural or man-made barrier.
NWI 144	0.03	acre(s)	(b)(1) Non-adjacent wetland. It is a palustrine emergent wetland that does not abut an (a)(1)-(a)(3) water. It is not located in a landscape position that would be flooded/inundated by an (a)(1)-(a)(3) water during a “typical year”. It is separated from an (a)(1)-(a)(3) water by more than a single natural or man-made barrier.



**U.S. ARMY CORPS OF ENGINEERS
REGULATORY PROGRAM
APPROVED JURISDICTIONAL DETERMINATION FORM (INTERIM)
NAVIGABLE WATERS PROTECTION RULE**

Excluded waters ((b)(1) – (b)(12)): ⁴			
Exclusion Name	Exclusion Size	Exclusion ⁵	Rationale for Exclusion Determination
NWI 145	0.04	acre(s)	(b)(1) Non-adjacent wetland. It is a palustrine emergent wetland that does not abut an (a)(1)-(a)(3) water. It is not located in a landscape position that would be flooded/inundated by an (a)(1)-(a)(3) water during a “typical year”. It is separated from an (a)(1)-(a)(3) water by more than a single natural or man-made barrier.
NWI 146	0.05	acre(s)	(b)(1) Non-adjacent wetland. It is a palustrine emergent wetland that does not abut an (a)(1)-(a)(3) water. It is not located in a landscape position that would be flooded/inundated by an (a)(1)-(a)(3) water during a “typical year”. It is separated from an (a)(1)-(a)(3) water by more than a single natural or man-made barrier.
NWI 147	0.02	acre(s)	(b)(1) Non-adjacent wetland. It is a palustrine emergent wetland that does not abut an (a)(1)-(a)(3) water. It is not located in a landscape position that would be flooded/inundated by an (a)(1)-(a)(3) water during a “typical year”. It is separated from an (a)(1)-(a)(3) water by more than a single natural or man-made barrier.
NWI 148	0.02	acre(s)	(b)(1) Non-adjacent wetland. It is a palustrine emergent wetland that does not abut an (a)(1)-(a)(3) water. It is not located in a landscape position that would be flooded/inundated by an (a)(1)-(a)(3) water during a “typical year”. It is separated from an (a)(1)-(a)(3) water by more than a single natural or man-made barrier.
NWI 149	0.02	acre(s)	(b)(1) Non-adjacent wetland. It is a palustrine emergent wetland that does not abut an (a)(1)-(a)(3) water. It is not located in a landscape position that would be flooded/inundated by an (a)(1)-(a)(3) water during a “typical year”. It is separated from an (a)(1)-(a)(3) water by more than a single natural or man-made barrier.
NWI 150	0.02	acre(s)	(b)(1) Non-adjacent wetland. It is a palustrine emergent wetland that does not abut an (a)(1)-(a)(3) water. It is not located in a landscape position that would be flooded/inundated by an (a)(1)-(a)(3) water during a “typical year”. It is separated from an (a)(1)-(a)(3) water by more than a single natural or man-made barrier.



**U.S. ARMY CORPS OF ENGINEERS
REGULATORY PROGRAM
APPROVED JURISDICTIONAL DETERMINATION FORM (INTERIM)
NAVIGABLE WATERS PROTECTION RULE**

Excluded waters ((b)(1) – (b)(12)): ⁴			
Exclusion Name	Exclusion Size	Exclusion ⁵	Rationale for Exclusion Determination
NWI 151	0.05	acre(s)	(b)(1) Non-adjacent wetland. It is a palustrine emergent wetland that does not abut an (a)(1)-(a)(3) water. It is not located in a landscape position that would be flooded/inundated by an (a)(1)-(a)(3) water during a “typical year”. It is separated from an (a)(1)-(a)(3) water by more than a single natural or man-made barrier.
NWI 152	0.01	acre(s)	(b)(1) Non-adjacent wetland. It is a palustrine emergent wetland that does not abut an (a)(1)-(a)(3) water. It is not located in a landscape position that would be flooded/inundated by an (a)(1)-(a)(3) water during a “typical year”. It is separated from an (a)(1)-(a)(3) water by more than a single natural or man-made barrier.
NWI 153	0.09	acre(s)	(b)(1) Non-adjacent wetland. It is a palustrine emergent wetland that does not abut an (a)(1)-(a)(3) water. It is not located in a landscape position that would be flooded/inundated by an (a)(1)-(a)(3) water during a “typical year”. It is separated from an (a)(1)-(a)(3) water by more than a single natural or man-made barrier.
NWI 154	0.01	acre(s)	(b)(1) Non-adjacent wetland. It is a palustrine emergent wetland that does not abut an (a)(1)-(a)(3) water. It is not located in a landscape position that would be flooded/inundated by an (a)(1)-(a)(3) water during a “typical year”. It is separated from an (a)(1)-(a)(3) water by more than a single natural or man-made barrier.
NWI 155	0.38	acre(s)	(b)(1) Non-adjacent wetland. It is a palustrine emergent wetland that does not abut an (a)(1)-(a)(3) water. It is not located in a landscape position that would be flooded/inundated by an (a)(1)-(a)(3) water during a “typical year”. It is separated from an (a)(1)-(a)(3) water by more than a single natural or man-made barrier.
NWI 156	0.02	acre(s)	(b)(1) Non-adjacent wetland. It is a palustrine emergent wetland that does not abut an (a)(1)-(a)(3) water. It is not located in a landscape position that would be flooded/inundated by an (a)(1)-(a)(3) water during a “typical year”. It is separated from an (a)(1)-(a)(3) water by more than a single natural or man-made barrier.



**U.S. ARMY CORPS OF ENGINEERS
REGULATORY PROGRAM
APPROVED JURISDICTIONAL DETERMINATION FORM (INTERIM)
NAVIGABLE WATERS PROTECTION RULE**

Excluded waters ((b)(1) – (b)(12)): ⁴				
Exclusion Name	Exclusion Size	Exclusion ⁵	Rationale for Exclusion Determination	
NWI 157	0.02	acre(s)	(b)(1) Non-adjacent wetland.	It is a palustrine emergent wetland that does not abut an (a)(1)-(a)(3) water. It is not located in a landscape position that would be flooded/inundated by an (a)(1)-(a)(3) water during a “typical year”. It is separated from an (a)(1)-(a)(3) water by more than a single natural or man-made barrier.
NWI 158	0.04	acre(s)	(b)(1) Non-adjacent wetland.	It is a palustrine emergent wetland that does not abut an (a)(1)-(a)(3) water. It is not located in a landscape position that would be flooded/inundated by an (a)(1)-(a)(3) water during a “typical year”. It is separated from an (a)(1)-(a)(3) water by more than a single natural or man-made barrier.
NWI 159	0.03	acre(s)	(b)(1) Non-adjacent wetland.	It is a palustrine emergent wetland that does not abut an (a)(1)-(a)(3) water. It is not located in a landscape position that would be flooded/inundated by an (a)(1)-(a)(3) water during a “typical year”. It is separated from an (a)(1)-(a)(3) water by more than a single natural or man-made barrier.
NWI 160	0.02	acre(s)	(b)(1) Non-adjacent wetland.	It is a palustrine emergent wetland that does not abut an (a)(1)-(a)(3) water. It is not located in a landscape position that would be flooded/inundated by an (a)(1)-(a)(3) water during a “typical year”. It is separated from an (a)(1)-(a)(3) water by more than a single natural or man-made barrier.
NWI 161	0.02	acre(s)	(b)(1) Non-adjacent wetland.	It is a palustrine emergent wetland that does not abut an (a)(1)-(a)(3) water. It is not located in a landscape position that would be flooded/inundated by an (a)(1)-(a)(3) water during a “typical year”. It is separated from an (a)(1)-(a)(3) water by more than a single natural or man-made barrier.
NWI 162	0.02	acre(s)	(b)(1) Non-adjacent wetland.	It is a palustrine emergent wetland that does not abut an (a)(1)-(a)(3) water. It is not located in a landscape position that would be flooded/inundated by an (a)(1)-(a)(3) water during a “typical year”. It is separated from an (a)(1)-(a)(3) water by more than a single natural or man-made barrier.



**U.S. ARMY CORPS OF ENGINEERS
REGULATORY PROGRAM
APPROVED JURISDICTIONAL DETERMINATION FORM (INTERIM)
NAVIGABLE WATERS PROTECTION RULE**

Excluded waters ((b)(1) – (b)(12)): ⁴				
Exclusion Name	Exclusion Size	Exclusion ⁵	Rationale for Exclusion Determination	
NWI 163	0.02	acre(s)	(b)(1) Non-adjacent wetland.	It is a palustrine emergent wetland that does not abut an (a)(1)-(a)(3) water. It is not located in a landscape position that would be flooded/inundated by an (a)(1)-(a)(3) water during a “typical year”. It is separated from an (a)(1)-(a)(3) water by more than a single natural or man-made barrier.
NWI 164	0.03	acre(s)	(b)(1) Non-adjacent wetland.	It is a palustrine emergent wetland that does not abut an (a)(1)-(a)(3) water. It is not located in a landscape position that would be flooded/inundated by an (a)(1)-(a)(3) water during a “typical year”. It is separated from an (a)(1)-(a)(3) water by more than a single natural or man-made barrier.
NWI 165	0.02	acre(s)	(b)(1) Non-adjacent wetland.	It is a palustrine emergent wetland that does not abut an (a)(1)-(a)(3) water. It is not located in a landscape position that would be flooded/inundated by an (a)(1)-(a)(3) water during a “typical year”. It is separated from an (a)(1)-(a)(3) water by more than a single natural or man-made barrier.
NWI 166	0.02	acre(s)	(b)(1) Non-adjacent wetland.	It is a palustrine emergent wetland that does not abut an (a)(1)-(a)(3) water. It is not located in a landscape position that would be flooded/inundated by an (a)(1)-(a)(3) water during a “typical year”. It is separated from an (a)(1)-(a)(3) water by more than a single natural or man-made barrier.
NWI 167	0.02	acre(s)	(b)(1) Non-adjacent wetland.	It is a palustrine emergent wetland that does not abut an (a)(1)-(a)(3) water. It is not located in a landscape position that would be flooded/inundated by an (a)(1)-(a)(3) water during a “typical year”. It is separated from an (a)(1)-(a)(3) water by more than a single natural or man-made barrier.
NWI 168	0.04	acre(s)	(b)(1) Non-adjacent wetland.	It is a palustrine emergent wetland that does not abut an (a)(1)-(a)(3) water. It is not located in a landscape position that would be flooded/inundated by an (a)(1)-(a)(3) water during a “typical year”. It is separated from an (a)(1)-(a)(3) water by more than a single natural or man-made barrier.



**U.S. ARMY CORPS OF ENGINEERS
REGULATORY PROGRAM
APPROVED JURISDICTIONAL DETERMINATION FORM (INTERIM)
NAVIGABLE WATERS PROTECTION RULE**

Excluded waters ((b)(1) – (b)(12)): ⁴				
Exclusion Name	Exclusion Size	Exclusion ⁵	Rationale for Exclusion Determination	
NWI 169	0.03	acre(s)	(b)(1) Non-adjacent wetland.	It is a palustrine emergent wetland that does not abut an (a)(1)-(a)(3) water. It is not located in a landscape position that would be flooded/inundated by an (a)(1)-(a)(3) water during a “typical year”. It is separated from an (a)(1)-(a)(3) water by more than a single natural or man-made barrier.
NWI 170	0.02	acre(s)	(b)(1) Non-adjacent wetland.	It is a palustrine emergent wetland that does not abut an (a)(1)-(a)(3) water. It is not located in a landscape position that would be flooded/inundated by an (a)(1)-(a)(3) water during a “typical year”. It is separated from an (a)(1)-(a)(3) water by more than a single natural or man-made barrier.
NWI 171	0.03	acre(s)	(b)(1) Non-adjacent wetland.	It is a palustrine emergent wetland that does not abut an (a)(1)-(a)(3) water. It is not located in a landscape position that would be flooded/inundated by an (a)(1)-(a)(3) water during a “typical year”. It is separated from an (a)(1)-(a)(3) water by more than a single natural or man-made barrier.
NWI 172	0.02	acre(s)	(b)(1) Non-adjacent wetland.	It is a palustrine emergent wetland that does not abut an (a)(1)-(a)(3) water. It is not located in a landscape position that would be flooded/inundated by an (a)(1)-(a)(3) water during a “typical year”. It is separated from an (a)(1)-(a)(3) water by more than a single natural or man-made barrier.
NWI 173	0.03	acre(s)	(b)(1) Non-adjacent wetland.	It is a palustrine emergent wetland that does not abut an (a)(1)-(a)(3) water. It is not located in a landscape position that would be flooded/inundated by an (a)(1)-(a)(3) water during a “typical year”. It is separated from an (a)(1)-(a)(3) water by more than a single natural or man-made barrier.
NWI 174	0.01	acre(s)	(b)(1) Non-adjacent wetland.	It is a palustrine emergent wetland that does not abut an (a)(1)-(a)(3) water. It is not located in a landscape position that would be flooded/inundated by an (a)(1)-(a)(3) water during a “typical year”. It is separated from an (a)(1)-(a)(3) water by more than a single natural or man-made barrier.



**U.S. ARMY CORPS OF ENGINEERS
REGULATORY PROGRAM
APPROVED JURISDICTIONAL DETERMINATION FORM (INTERIM)
NAVIGABLE WATERS PROTECTION RULE**

Excluded waters ((b)(1) – (b)(12)): ⁴			
Exclusion Name	Exclusion Size	Exclusion ⁵	Rationale for Exclusion Determination
NWI 175	0.02	acre(s)	(b)(1) Non-adjacent wetland. It is a palustrine emergent wetland that does not abut an (a)(1)-(a)(3) water. It is not located in a landscape position that would be flooded/inundated by an (a)(1)-(a)(3) water during a “typical year”. It is separated from an (a)(1)-(a)(3) water by more than a single natural or man-made barrier.
NWI 176	0.03	acre(s)	(b)(1) Non-adjacent wetland. It is a palustrine emergent wetland that does not abut an (a)(1)-(a)(3) water. It is not located in a landscape position that would be flooded/inundated by an (a)(1)-(a)(3) water during a “typical year”. It is separated from an (a)(1)-(a)(3) water by more than a single natural or man-made barrier.
NWI 177	0.14	acre(s)	(b)(1) Non-adjacent wetland. It is a palustrine emergent wetland that does not abut an (a)(1)-(a)(3) water. It is not located in a landscape position that would be flooded/inundated by an (a)(1)-(a)(3) water during a “typical year”. It is separated from an (a)(1)-(a)(3) water by more than a single natural or man-made barrier.
NWI 178	0.03	acre(s)	(b)(1) Non-adjacent wetland. It is a palustrine emergent wetland that does not abut an (a)(1)-(a)(3) water. It is not located in a landscape position that would be flooded/inundated by an (a)(1)-(a)(3) water during a “typical year”. It is separated from an (a)(1)-(a)(3) water by more than a single natural or man-made barrier.
NWI 179	0.02	acre(s)	(b)(1) Non-adjacent wetland. It is a palustrine emergent wetland that does not abut an (a)(1)-(a)(3) water. It is not located in a landscape position that would be flooded/inundated by an (a)(1)-(a)(3) water during a “typical year”. It is separated from an (a)(1)-(a)(3) water by more than a single natural or man-made barrier.
NWI 180	0.02	acre(s)	(b)(1) Non-adjacent wetland. It is a palustrine emergent wetland that does not abut an (a)(1)-(a)(3) water. It is not located in a landscape position that would be flooded/inundated by an (a)(1)-(a)(3) water during a “typical year”. It is separated from an (a)(1)-(a)(3) water by more than a single natural or man-made barrier.



**U.S. ARMY CORPS OF ENGINEERS
REGULATORY PROGRAM
APPROVED JURISDICTIONAL DETERMINATION FORM (INTERIM)
NAVIGABLE WATERS PROTECTION RULE**

Excluded waters ((b)(1) – (b)(12)): ⁴				
Exclusion Name	Exclusion Size	Exclusion ⁵	Rationale for Exclusion Determination	
NWI 181	0.03	acre(s)	(b)(1) Non-adjacent wetland.	It is a palustrine emergent wetland that does not abut an (a)(1)-(a)(3) water. It is not located in a landscape position that would be flooded/inundated by an (a)(1)-(a)(3) water during a “typical year”. It is separated from an (a)(1)-(a)(3) water by more than a single natural or man-made barrier.
NWI 182	0.03	acre(s)	(b)(1) Non-adjacent wetland.	It is a palustrine emergent wetland that does not abut an (a)(1)-(a)(3) water. It is not located in a landscape position that would be flooded/inundated by an (a)(1)-(a)(3) water during a “typical year”. It is separated from an (a)(1)-(a)(3) water by more than a single natural or man-made barrier.
NWI 183	0.04	acre(s)	(b)(1) Non-adjacent wetland.	It is a palustrine emergent wetland that does not abut an (a)(1)-(a)(3) water. It is not located in a landscape position that would be flooded/inundated by an (a)(1)-(a)(3) water during a “typical year”. It is separated from an (a)(1)-(a)(3) water by more than a single natural or man-made barrier.
NWI 184	0.05	acre(s)	(b)(1) Non-adjacent wetland.	It is a palustrine emergent wetland that does not abut an (a)(1)-(a)(3) water. It is not located in a landscape position that would be flooded/inundated by an (a)(1)-(a)(3) water during a “typical year”. It is separated from an (a)(1)-(a)(3) water by more than a single natural or man-made barrier.
NWI 185	0.03	acre(s)	(b)(1) Non-adjacent wetland.	It is a palustrine emergent wetland that does not abut an (a)(1)-(a)(3) water. It is not located in a landscape position that would be flooded/inundated by an (a)(1)-(a)(3) water during a “typical year”. It is separated from an (a)(1)-(a)(3) water by more than a single natural or man-made barrier.
NWI 186	0.04	acre(s)	(b)(1) Non-adjacent wetland.	It is a palustrine emergent wetland that does not abut an (a)(1)-(a)(3) water. It is not located in a landscape position that would be flooded/inundated by an (a)(1)-(a)(3) water during a “typical year”. It is separated from an (a)(1)-(a)(3) water by more than a single natural or man-made barrier.



**U.S. ARMY CORPS OF ENGINEERS
REGULATORY PROGRAM
APPROVED JURISDICTIONAL DETERMINATION FORM (INTERIM)
NAVIGABLE WATERS PROTECTION RULE**

Excluded waters ((b)(1) – (b)(12)): ⁴				
Exclusion Name	Exclusion Size	Exclusion ⁵	Rationale for Exclusion Determination	
NWI 187	0.04	acre(s)	(b)(1) Non-adjacent wetland.	It is a palustrine emergent wetland that does not abut an (a)(1)-(a)(3) water. It is not located in a landscape position that would be flooded/inundated by an (a)(1)-(a)(3) water during a “typical year”. It is separated from an (a)(1)-(a)(3) water by more than a single natural or man-made barrier.
NWI 188	0.02	acre(s)	(b)(1) Non-adjacent wetland.	It is a palustrine emergent wetland that does not abut an (a)(1)-(a)(3) water. It is not located in a landscape position that would be flooded/inundated by an (a)(1)-(a)(3) water during a “typical year”. It is separated from an (a)(1)-(a)(3) water by more than a single natural or man-made barrier.
NWI 189	0.02	acre(s)	(b)(1) Non-adjacent wetland.	It is a palustrine emergent wetland that does not abut an (a)(1)-(a)(3) water. It is not located in a landscape position that would be flooded/inundated by an (a)(1)-(a)(3) water during a “typical year”. It is separated from an (a)(1)-(a)(3) water by more than a single natural or man-made barrier.
NWI 190	0.03	acre(s)	(b)(1) Non-adjacent wetland.	It is a palustrine emergent wetland that does not abut an (a)(1)-(a)(3) water. It is not located in a landscape position that would be flooded/inundated by an (a)(1)-(a)(3) water during a “typical year”. It is separated from an (a)(1)-(a)(3) water by more than a single natural or man-made barrier.
NWI 191	0.03	acre(s)	(b)(1) Non-adjacent wetland.	It is a palustrine emergent wetland that does not abut an (a)(1)-(a)(3) water. It is not located in a landscape position that would be flooded/inundated by an (a)(1)-(a)(3) water during a “typical year”. It is separated from an (a)(1)-(a)(3) water by more than a single natural or man-made barrier.
NWI 192	0.02	acre(s)	(b)(1) Non-adjacent wetland.	It is a palustrine emergent wetland that does not abut an (a)(1)-(a)(3) water. It is not located in a landscape position that would be flooded/inundated by an (a)(1)-(a)(3) water during a “typical year”. It is separated from an (a)(1)-(a)(3) water by more than a single natural or man-made barrier.



**U.S. ARMY CORPS OF ENGINEERS
REGULATORY PROGRAM
APPROVED JURISDICTIONAL DETERMINATION FORM (INTERIM)
NAVIGABLE WATERS PROTECTION RULE**

Excluded waters ((b)(1) – (b)(12)): ⁴			
Exclusion Name	Exclusion Size	Exclusion ⁵	Rationale for Exclusion Determination
NWI 193	0.02	acre(s)	(b)(1) Non-adjacent wetland. It is a palustrine emergent wetland that does not abut an (a)(1)-(a)(3) water. It is not located in a landscape position that would be flooded/inundated by an (a)(1)-(a)(3) water during a “typical year”. It is separated from an (a)(1)-(a)(3) water by more than a single natural or man-made barrier.
NWI 194	0.04	acre(s)	(b)(1) Non-adjacent wetland. It is a palustrine emergent wetland that does not abut an (a)(1)-(a)(3) water. It is not located in a landscape position that would be flooded/inundated by an (a)(1)-(a)(3) water during a “typical year”. It is separated from an (a)(1)-(a)(3) water by more than a single natural or man-made barrier.
NWI 195	0.04	acre(s)	(b)(1) Non-adjacent wetland. It is a palustrine emergent wetland that does not abut an (a)(1)-(a)(3) water. It is not located in a landscape position that would be flooded/inundated by an (a)(1)-(a)(3) water during a “typical year”. It is separated from an (a)(1)-(a)(3) water by more than a single natural or man-made barrier.
NWI 196	0.03	acre(s)	(b)(1) Non-adjacent wetland. It is a palustrine emergent wetland that does not abut an (a)(1)-(a)(3) water. It is not located in a landscape position that would be flooded/inundated by an (a)(1)-(a)(3) water during a “typical year”. It is separated from an (a)(1)-(a)(3) water by more than a single natural or man-made barrier.
NWI 197	0.01	acre(s)	(b)(1) Non-adjacent wetland. It is a palustrine emergent wetland that does not abut an (a)(1)-(a)(3) water. It is not located in a landscape position that would be flooded/inundated by an (a)(1)-(a)(3) water during a “typical year”. It is separated from an (a)(1)-(a)(3) water by more than a single natural or man-made barrier.
NWI 198	0.03	acre(s)	(b)(1) Non-adjacent wetland. It is a palustrine emergent wetland that does not abut an (a)(1)-(a)(3) water. It is not located in a landscape position that would be flooded/inundated by an (a)(1)-(a)(3) water during a “typical year”. It is separated from an (a)(1)-(a)(3) water by more than a single natural or man-made barrier.



**U.S. ARMY CORPS OF ENGINEERS
REGULATORY PROGRAM
APPROVED JURISDICTIONAL DETERMINATION FORM (INTERIM)
NAVIGABLE WATERS PROTECTION RULE**

Excluded waters ((b)(1) – (b)(12)): ⁴			
Exclusion Name	Exclusion Size	Exclusion ⁵	Rationale for Exclusion Determination
NWI 199	0.03	acre(s)	(b)(1) Non-adjacent wetland. It is a palustrine emergent wetland that does not abut an (a)(1)-(a)(3) water. It is not located in a landscape position that would be flooded/inundated by an (a)(1)-(a)(3) water during a “typical year”. It is separated from an (a)(1)-(a)(3) water by more than a single natural or man-made barrier.
NWI 200	0.03	acre(s)	(b)(1) Non-adjacent wetland. It is a palustrine emergent wetland that does not abut an (a)(1)-(a)(3) water. It is not located in a landscape position that would be flooded/inundated by an (a)(1)-(a)(3) water during a “typical year”. It is separated from an (a)(1)-(a)(3) water by more than a single natural or man-made barrier.
NWI 201	0.04	acre(s)	(b)(1) Non-adjacent wetland. It is a palustrine emergent wetland that does not abut an (a)(1)-(a)(3) water. It is not located in a landscape position that would be flooded/inundated by an (a)(1)-(a)(3) water during a “typical year”. It is separated from an (a)(1)-(a)(3) water by more than a single natural or man-made barrier.
NWI 202	0.03	acre(s)	(b)(1) Non-adjacent wetland. It is a palustrine emergent wetland that does not abut an (a)(1)-(a)(3) water. It is not located in a landscape position that would be flooded/inundated by an (a)(1)-(a)(3) water during a “typical year”. It is separated from an (a)(1)-(a)(3) water by more than a single natural or man-made barrier.
NWI 203	0.03	acre(s)	(b)(1) Non-adjacent wetland. It is a palustrine emergent wetland that does not abut an (a)(1)-(a)(3) water. It is not located in a landscape position that would be flooded/inundated by an (a)(1)-(a)(3) water during a “typical year”. It is separated from an (a)(1)-(a)(3) water by more than a single natural or man-made barrier.
NWI 204	0.02	acre(s)	(b)(1) Non-adjacent wetland. It is a palustrine emergent wetland that does not abut an (a)(1)-(a)(3) water. It is not located in a landscape position that would be flooded/inundated by an (a)(1)-(a)(3) water during a “typical year”. It is separated from an (a)(1)-(a)(3) water by more than a single natural or man-made barrier.



**U.S. ARMY CORPS OF ENGINEERS
REGULATORY PROGRAM
APPROVED JURISDICTIONAL DETERMINATION FORM (INTERIM)
NAVIGABLE WATERS PROTECTION RULE**

Excluded waters ((b)(1) – (b)(12)): ⁴				
Exclusion Name	Exclusion Size	Exclusion ⁵	Rationale for Exclusion Determination	
NWI 205	0.04	acre(s)	(b)(1) Non-adjacent wetland.	It is a palustrine emergent wetland that does not abut an (a)(1)-(a)(3) water. It is not located in a landscape position that would be flooded/inundated by an (a)(1)-(a)(3) water during a “typical year”. It is separated from an (a)(1)-(a)(3) water by more than a single natural or man-made barrier.
NWI 206	0.04	acre(s)	(b)(1) Non-adjacent wetland.	It is a palustrine emergent wetland that does not abut an (a)(1)-(a)(3) water. It is not located in a landscape position that would be flooded/inundated by an (a)(1)-(a)(3) water during a “typical year”. It is separated from an (a)(1)-(a)(3) water by more than a single natural or man-made barrier.
NWI 207	0.02	acre(s)	(b)(1) Non-adjacent wetland.	It is a palustrine emergent wetland that does not abut an (a)(1)-(a)(3) water. It is not located in a landscape position that would be flooded/inundated by an (a)(1)-(a)(3) water during a “typical year”. It is separated from an (a)(1)-(a)(3) water by more than a single natural or man-made barrier.
NWI 208	0.02	acre(s)	(b)(1) Non-adjacent wetland.	It is a palustrine emergent wetland that does not abut an (a)(1)-(a)(3) water. It is not located in a landscape position that would be flooded/inundated by an (a)(1)-(a)(3) water during a “typical year”. It is separated from an (a)(1)-(a)(3) water by more than a single natural or man-made barrier.
NWI 209	0.06	acre(s)	(b)(1) Non-adjacent wetland.	It is a palustrine emergent wetland that does not abut an (a)(1)-(a)(3) water. It is not located in a landscape position that would be flooded/inundated by an (a)(1)-(a)(3) water during a “typical year”. It is separated from an (a)(1)-(a)(3) water by more than a single natural or man-made barrier.
NWI 210	0.02	acre(s)	(b)(1) Non-adjacent wetland.	It is a palustrine emergent wetland that does not abut an (a)(1)-(a)(3) water. It is not located in a landscape position that would be flooded/inundated by an (a)(1)-(a)(3) water during a “typical year”. It is separated from an (a)(1)-(a)(3) water by more than a single natural or man-made barrier.



**U.S. ARMY CORPS OF ENGINEERS
REGULATORY PROGRAM
APPROVED JURISDICTIONAL DETERMINATION FORM (INTERIM)
NAVIGABLE WATERS PROTECTION RULE**

Excluded waters ((b)(1) – (b)(12)): ⁴				
Exclusion Name	Exclusion Size	Exclusion ⁵	Rationale for Exclusion Determination	
NWI 211	0.02	acre(s)	(b)(1) Non-adjacent wetland.	It is a palustrine emergent wetland that does not abut an (a)(1)-(a)(3) water. It is not located in a landscape position that would be flooded/inundated by an (a)(1)-(a)(3) water during a “typical year”. It is separated from an (a)(1)-(a)(3) water by more than a single natural or man-made barrier.
NWI 212	0.03	acre(s)	(b)(1) Non-adjacent wetland.	It is a palustrine emergent wetland that does not abut an (a)(1)-(a)(3) water. It is not located in a landscape position that would be flooded/inundated by an (a)(1)-(a)(3) water during a “typical year”. It is separated from an (a)(1)-(a)(3) water by more than a single natural or man-made barrier.
NWI 213	0.03	acre(s)	(b)(1) Non-adjacent wetland.	It is a palustrine emergent wetland that does not abut an (a)(1)-(a)(3) water. It is not located in a landscape position that would be flooded/inundated by an (a)(1)-(a)(3) water during a “typical year”. It is separated from an (a)(1)-(a)(3) water by more than a single natural or man-made barrier.
NWI 214	0.02	acre(s)	(b)(1) Non-adjacent wetland.	It is a palustrine emergent wetland that does not abut an (a)(1)-(a)(3) water. It is not located in a landscape position that would be flooded/inundated by an (a)(1)-(a)(3) water during a “typical year”. It is separated from an (a)(1)-(a)(3) water by more than a single natural or man-made barrier.
NWI 215	0.02	acre(s)	(b)(1) Non-adjacent wetland.	It is a palustrine emergent wetland that does not abut an (a)(1)-(a)(3) water. It is not located in a landscape position that would be flooded/inundated by an (a)(1)-(a)(3) water during a “typical year”. It is separated from an (a)(1)-(a)(3) water by more than a single natural or man-made barrier.
NWI 216	0.03	acre(s)	(b)(1) Non-adjacent wetland.	It is a palustrine emergent wetland that does not abut an (a)(1)-(a)(3) water. It is not located in a landscape position that would be flooded/inundated by an (a)(1)-(a)(3) water during a “typical year”. It is separated from an (a)(1)-(a)(3) water by more than a single natural or man-made barrier.



**U.S. ARMY CORPS OF ENGINEERS
REGULATORY PROGRAM
APPROVED JURISDICTIONAL DETERMINATION FORM (INTERIM)
NAVIGABLE WATERS PROTECTION RULE**

Excluded waters ((b)(1) – (b)(12)): ⁴				
Exclusion Name	Exclusion Size	Exclusion ⁵	Rationale for Exclusion Determination	
NWI 217	0.02	acre(s)	(b)(1) Non-adjacent wetland.	It is a palustrine emergent wetland that does not abut an (a)(1)-(a)(3) water. It is not located in a landscape position that would be flooded/inundated by an (a)(1)-(a)(3) water during a “typical year”. It is separated from an (a)(1)-(a)(3) water by more than a single natural or man-made barrier.
NWI 218	0.03	acre(s)	(b)(1) Non-adjacent wetland.	It is a palustrine emergent wetland that does not abut an (a)(1)-(a)(3) water. It is not located in a landscape position that would be flooded/inundated by an (a)(1)-(a)(3) water during a “typical year”. It is separated from an (a)(1)-(a)(3) water by more than a single natural or man-made barrier.
NWI 219	0.05	acre(s)	(b)(1) Non-adjacent wetland.	It is a palustrine emergent wetland that does not abut an (a)(1)-(a)(3) water. It is not located in a landscape position that would be flooded/inundated by an (a)(1)-(a)(3) water during a “typical year”. It is separated from an (a)(1)-(a)(3) water by more than a single natural or man-made barrier.
NWI 220	0.06	acre(s)	(b)(1) Non-adjacent wetland.	It is a palustrine emergent wetland that does not abut an (a)(1)-(a)(3) water. It is not located in a landscape position that would be flooded/inundated by an (a)(1)-(a)(3) water during a “typical year”. It is separated from an (a)(1)-(a)(3) water by more than a single natural or man-made barrier.
NWI 221	0.04	acre(s)	(b)(1) Non-adjacent wetland.	It is a palustrine emergent wetland that does not abut an (a)(1)-(a)(3) water. It is not located in a landscape position that would be flooded/inundated by an (a)(1)-(a)(3) water during a “typical year”. It is separated from an (a)(1)-(a)(3) water by more than a single natural or man-made barrier.
NWI 222	0.02	acre(s)	(b)(1) Non-adjacent wetland.	It is a palustrine emergent wetland that does not abut an (a)(1)-(a)(3) water. It is not located in a landscape position that would be flooded/inundated by an (a)(1)-(a)(3) water during a “typical year”. It is separated from an (a)(1)-(a)(3) water by more than a single natural or man-made barrier.



**U.S. ARMY CORPS OF ENGINEERS
REGULATORY PROGRAM
APPROVED JURISDICTIONAL DETERMINATION FORM (INTERIM)
NAVIGABLE WATERS PROTECTION RULE**

Excluded waters ((b)(1) – (b)(12)): ⁴				
Exclusion Name	Exclusion Size	Exclusion ⁵	Rationale for Exclusion Determination	
NWI 223	0.03	acre(s)	(b)(1) Non-adjacent wetland.	It is a palustrine emergent wetland that does not abut an (a)(1)-(a)(3) water. It is not located in a landscape position that would be flooded/inundated by an (a)(1)-(a)(3) water during a “typical year”. It is separated from an (a)(1)-(a)(3) water by more than a single natural or man-made barrier.
NWI 224	0.02	acre(s)	(b)(1) Non-adjacent wetland.	It is a palustrine emergent wetland that does not abut an (a)(1)-(a)(3) water. It is not located in a landscape position that would be flooded/inundated by an (a)(1)-(a)(3) water during a “typical year”. It is separated from an (a)(1)-(a)(3) water by more than a single natural or man-made barrier.
NWI 225	0.04	acre(s)	(b)(1) Non-adjacent wetland.	It is a palustrine emergent wetland that does not abut an (a)(1)-(a)(3) water. It is not located in a landscape position that would be flooded/inundated by an (a)(1)-(a)(3) water during a “typical year”. It is separated from an (a)(1)-(a)(3) water by more than a single natural or man-made barrier.
NWI 226	0.03	acre(s)	(b)(1) Non-adjacent wetland.	It is a palustrine emergent wetland that does not abut an (a)(1)-(a)(3) water. It is not located in a landscape position that would be flooded/inundated by an (a)(1)-(a)(3) water during a “typical year”. It is separated from an (a)(1)-(a)(3) water by more than a single natural or man-made barrier.
NWI 227	0.03	acre(s)	(b)(1) Non-adjacent wetland.	It is a palustrine emergent wetland that does not abut an (a)(1)-(a)(3) water. It is not located in a landscape position that would be flooded/inundated by an (a)(1)-(a)(3) water during a “typical year”. It is separated from an (a)(1)-(a)(3) water by more than a single natural or man-made barrier.
NWI 228	0.03	acre(s)	(b)(1) Non-adjacent wetland.	It is a palustrine emergent wetland that does not abut an (a)(1)-(a)(3) water. It is not located in a landscape position that would be flooded/inundated by an (a)(1)-(a)(3) water during a “typical year”. It is separated from an (a)(1)-(a)(3) water by more than a single natural or man-made barrier.



**U.S. ARMY CORPS OF ENGINEERS
REGULATORY PROGRAM
APPROVED JURISDICTIONAL DETERMINATION FORM (INTERIM)
NAVIGABLE WATERS PROTECTION RULE**

Excluded waters ((b)(1) – (b)(12)): ⁴				
Exclusion Name	Exclusion Size	Exclusion ⁵	Rationale for Exclusion Determination	
NWI 229	0.04	acre(s)	(b)(1) Non-adjacent wetland.	It is a palustrine emergent wetland that does not abut an (a)(1)-(a)(3) water. It is not located in a landscape position that would be flooded/inundated by an (a)(1)-(a)(3) water during a “typical year”. It is separated from an (a)(1)-(a)(3) water by more than a single natural or man-made barrier.
NWI 230	0.02	acre(s)	(b)(1) Non-adjacent wetland.	It is a palustrine emergent wetland that does not abut an (a)(1)-(a)(3) water. It is not located in a landscape position that would be flooded/inundated by an (a)(1)-(a)(3) water during a “typical year”. It is separated from an (a)(1)-(a)(3) water by more than a single natural or man-made barrier.
NWI 231	0.02	acre(s)	(b)(1) Non-adjacent wetland.	It is a palustrine emergent wetland that does not abut an (a)(1)-(a)(3) water. It is not located in a landscape position that would be flooded/inundated by an (a)(1)-(a)(3) water during a “typical year”. It is separated from an (a)(1)-(a)(3) water by more than a single natural or man-made barrier.
NWI 232	0.05	acre(s)	(b)(1) Non-adjacent wetland.	It is a palustrine emergent wetland that does not abut an (a)(1)-(a)(3) water. It is not located in a landscape position that would be flooded/inundated by an (a)(1)-(a)(3) water during a “typical year”. It is separated from an (a)(1)-(a)(3) water by more than a single natural or man-made barrier.
NWI 233	0.01	acre(s)	(b)(1) Non-adjacent wetland.	It is a palustrine emergent wetland that does not abut an (a)(1)-(a)(3) water. It is not located in a landscape position that would be flooded/inundated by an (a)(1)-(a)(3) water during a “typical year”. It is separated from an (a)(1)-(a)(3) water by more than a single natural or man-made barrier.
NWI 234	0.02	acre(s)	(b)(1) Non-adjacent wetland.	It is a palustrine emergent wetland that does not abut an (a)(1)-(a)(3) water. It is not located in a landscape position that would be flooded/inundated by an (a)(1)-(a)(3) water during a “typical year”. It is separated from an (a)(1)-(a)(3) water by more than a single natural or man-made barrier.



**U.S. ARMY CORPS OF ENGINEERS
REGULATORY PROGRAM
APPROVED JURISDICTIONAL DETERMINATION FORM (INTERIM)
NAVIGABLE WATERS PROTECTION RULE**

Excluded waters ((b)(1) – (b)(12)): ⁴				
Exclusion Name	Exclusion Size	Exclusion ⁵	Rationale for Exclusion Determination	
NWI 235	0.03	acre(s)	(b)(1) Non-adjacent wetland.	It is a palustrine emergent wetland that does not abut an (a)(1)-(a)(3) water. It is not located in a landscape position that would be flooded/inundated by an (a)(1)-(a)(3) water during a “typical year”. It is separated from an (a)(1)-(a)(3) water by more than a single natural or man-made barrier.
NWI 236	0.04	acre(s)	(b)(1) Non-adjacent wetland.	It is a palustrine emergent wetland that does not abut an (a)(1)-(a)(3) water. It is not located in a landscape position that would be flooded/inundated by an (a)(1)-(a)(3) water during a “typical year”. It is separated from an (a)(1)-(a)(3) water by more than a single natural or man-made barrier.
NWI 237	0.02	acre(s)	(b)(1) Non-adjacent wetland.	It is a palustrine emergent wetland that does not abut an (a)(1)-(a)(3) water. It is not located in a landscape position that would be flooded/inundated by an (a)(1)-(a)(3) water during a “typical year”. It is separated from an (a)(1)-(a)(3) water by more than a single natural or man-made barrier.
NWI 238	0.02	acre(s)	(b)(1) Non-adjacent wetland.	It is a palustrine emergent wetland that does not abut an (a)(1)-(a)(3) water. It is not located in a landscape position that would be flooded/inundated by an (a)(1)-(a)(3) water during a “typical year”. It is separated from an (a)(1)-(a)(3) water by more than a single natural or man-made barrier.
NWI 239	0.02	acre(s)	(b)(1) Non-adjacent wetland.	It is a palustrine emergent wetland that does not abut an (a)(1)-(a)(3) water. It is not located in a landscape position that would be flooded/inundated by an (a)(1)-(a)(3) water during a “typical year”. It is separated from an (a)(1)-(a)(3) water by more than a single natural or man-made barrier.
NWI 240	0.21	acre(s)	(b)(1) Non-adjacent wetland.	It is a palustrine emergent wetland that does not abut an (a)(1)-(a)(3) water. It is not located in a landscape position that would be flooded/inundated by an (a)(1)-(a)(3) water during a “typical year”. It is separated from an (a)(1)-(a)(3) water by more than a single natural or man-made barrier.



**U.S. ARMY CORPS OF ENGINEERS
REGULATORY PROGRAM
APPROVED JURISDICTIONAL DETERMINATION FORM (INTERIM)
NAVIGABLE WATERS PROTECTION RULE**

Excluded waters ((b)(1) – (b)(12)): ⁴				
Exclusion Name	Exclusion Size	Exclusion ⁵	Rationale for Exclusion Determination	
NWI 241	0.07	acre(s)	(b)(1) Non-adjacent wetland.	It is a palustrine ponded wetland that does not abut an (a)(1)-(a)(3) water. It is not located in a landscape position that would be flooded/inundated by an (a)(1)-(a)(3) water during a “typical year”. It is separated from an (a)(1)-(a)(3) water by more than a single natural or man-made barrier.
NWI 242	0.98	acre(s)	(b)(1) Non-adjacent wetland.	It is a palustrine ponded wetland that does not abut an (a)(1)-(a)(3) water. It is not located in a landscape position that would be flooded/inundated by an (a)(1)-(a)(3) water during a “typical year”. It is separated from an (a)(1)-(a)(3) water by more than a single natural or man-made barrier.
NWI 243	0.235	acre(s)	(b)(1) Non-adjacent wetland.	It is a palustrine ponded wetland that does not abut an (a)(1)-(a)(3) water. It is not located in a landscape position that would be flooded/inundated by an (a)(1)-(a)(3) water during a “typical year”. It is separated from an (a)(1)-(a)(3) water by more than a single natural or man-made barrier.
NWI 244	0.33	acre(s)	(b)(1) Non-adjacent wetland.	It is a palustrine ponded wetland that does not abut an (a)(1)-(a)(3) water. It is not located in a landscape position that would be flooded/inundated by an (a)(1)-(a)(3) water during a “typical year”. It is separated from an (a)(1)-(a)(3) water by more than a single natural or man-made barrier.

III. SUPPORTING INFORMATION

A. Select/enter all resources that were used to aid in this determination and attach data/maps to this document and/or references/citations in the administrative record, as appropriate.

☒ Information submitted by, or on behalf of, the applicant/consultant: [Application and pertinent data provided by HDR, Inc., for Flint Hills Resources Corpus Christi, LLC, dated 24 AUG 2020 and 15 JUL 2021](#)

This information is and is not sufficient for purposes of this AJD.

Rationale: [The applicant provided information that required a site visit necessary to verify wetland delineation, and comparison to the most recent aerial photography and remote sensing/elevation data for verification.](#)

☐ Data sheets prepared by the Corps: [Title\(s\) and/or date\(s\).](#)

☒ Photographs: [Aerial: Google Earth, dated 31 JAN 2020, 29 AUG 2017, and 22 NOV 2014](#)

☒ Corps site visit(s) conducted on: [3 MAY 2021](#)

☐ Previous Jurisdictional Determinations (AJDs or PJDs): [N/A](#)

☐ Antecedent Precipitation Tool: [provide detailed discussion in Section III.B.](#)

☒ USDA NRCS Soil Survey: [San Patricio County, Texas soils map](#)

☒ USFWS NWI maps: [Port Ingleside, Texas NWI Quad](#)



**U.S. ARMY CORPS OF ENGINEERS
REGULATORY PROGRAM
APPROVED JURISDICTIONAL DETERMINATION FORM (INTERIM)
NAVIGABLE WATERS PROTECTION RULE**

☒ USGS topographic maps: 1:24,000-scale Quadrangle: Port Ingleside, Texas (2019)

Other data sources used to aid in this determination:

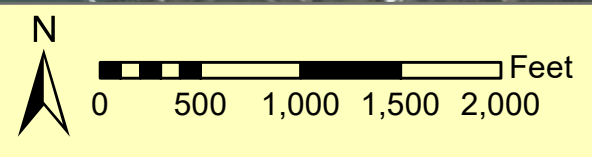
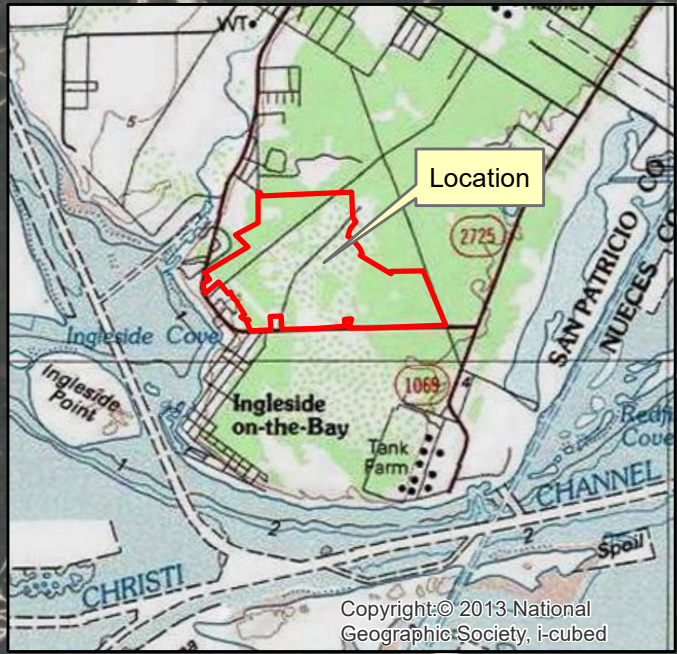
Data Source (select)	Name and/or date and other relevant information
USGS Sources	N/A
USDA Sources	N/A.
NOAA Sources	N/A.
USACE Sources	N/A.
State/Local/Tribal Sources	N/A.
Other Sources	FEMA FIRM Panel 48409C0605E, dated 4 NOV 2016

B. Typical year assessment(s): The parcel is entirely outside the floodplain of Corpus Christi and Redfish Bays ((a)(1) waters). These waterbodies do not contribute inundation to any of the palustrine wetlands located within the parcel in a typical year.

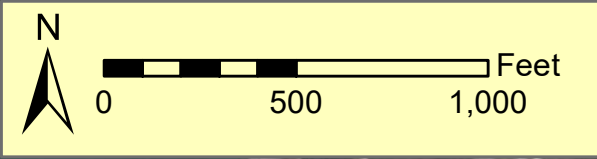
C. Additional comments to support AJD: The subject parcel central coordinates are 27.8442, -97.2114; Port Ingleside, Texas USGS quad map. Per the USGS map the site is located at an elevation between 19 and 35 feet. All of the parcel is at a higher elevation than the mapped 100-year flood plain of Corpus Christi and Redfish Bays ((a)(1) waters). The NWI map indicates the wetlands as palustrine emergent and small ponded areas not contiguous with each other, or with Corpus Christi and/or Redfish Bays. It was confirmed through a site visit and a review of historic aerial photography of the area flown 31 January 2020 that there are many small depressional wetlands that are surrounded by uplands located in this subject review area.

SWG-2020-00648 Review Area Overview Map

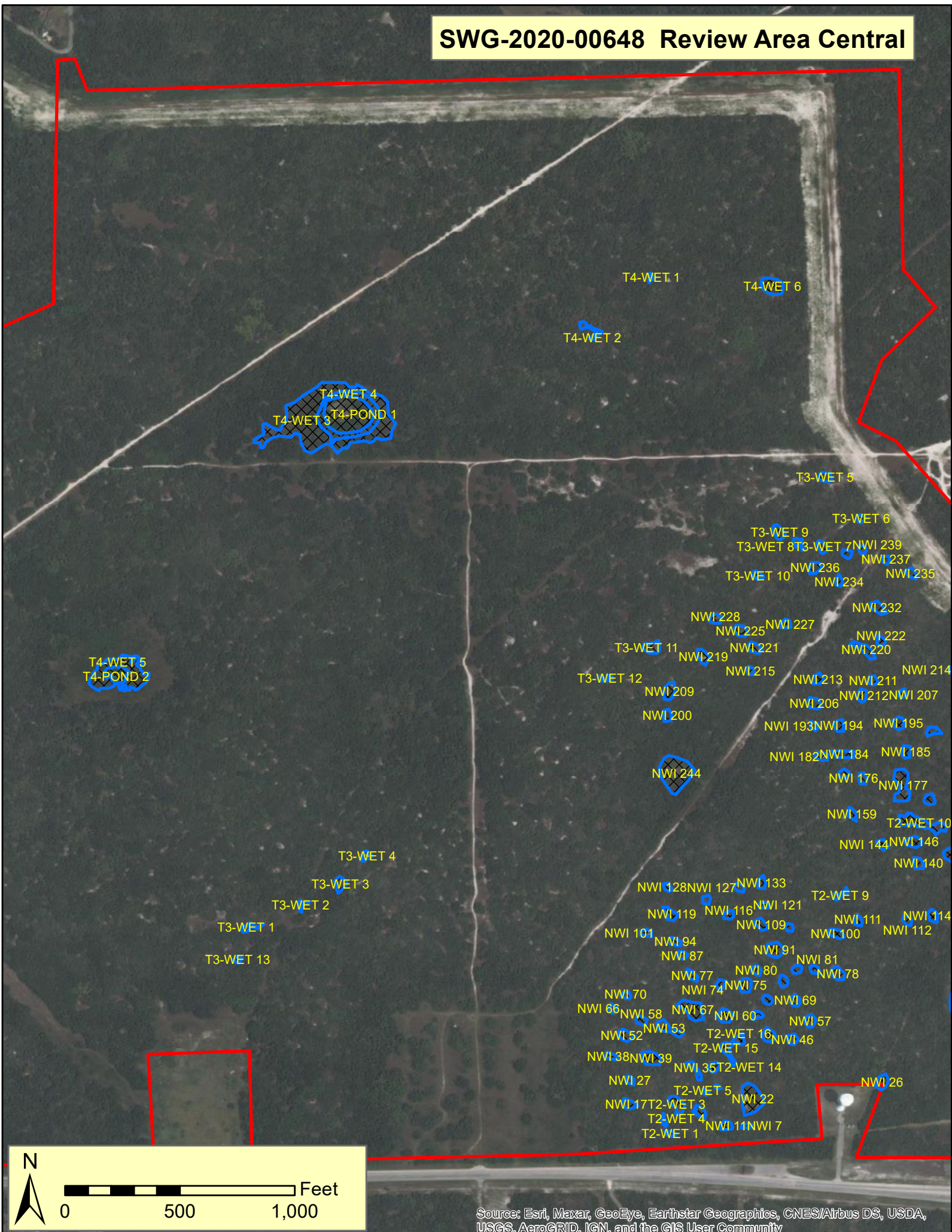
Review Area (548 Ac)



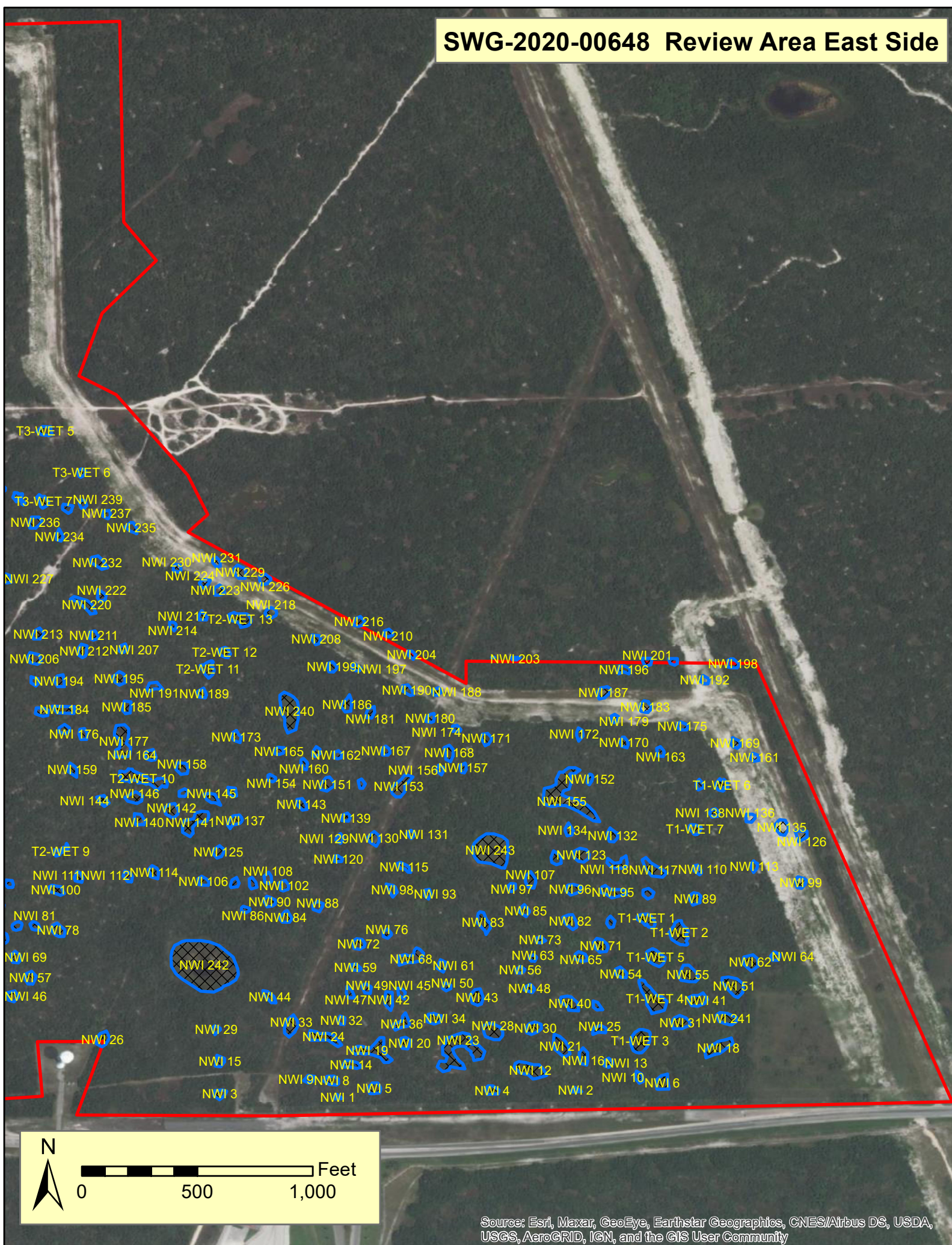
SWG-2020-00648 Review Area West Side



SWG-2020-00648 Review Area Central



SWG-2020-00648 Review Area East Side



N

0 500 1,000 Feet

Source: Esri, Maxar, GeoEye, Earthstar Geographics, CNES/Airbus DS, USDA, USGS, AeroGRID, IGN, and the GIS User Community

SWG-2020-00648 Waters

Name	Type	Area	Units	Latitude	Longitude	Waters_Type
T1-WET 1	PEM	0.06	ACRE	27.84044700	-97.19997600	NOJD404
T1-WET 2	PEM	0.12	ACRE	27.84022890	-97.19959100	NOJD404
T1-WET 3	PEM	0.13	ACRE	27.83901600	-97.20005300	NOJD404
T1-WET 4	PEM	0.16	ACRE	27.83951600	-97.19990600	NOJD404
T1-WET 5	PEM	0.08	ACRE	27.84000300	-97.19987500	NOJD404
T1-WET 6	PEM	0.04	ACRE	27.84205300	-97.19909000	NOJD404
T1-WET 7	PEM	0.03	ACRE	27.84152800	-97.19940300	NOJD404
T2-WET 1	PEM	0.01	ACRE	27.83842100	-97.20896200	NOJD404
T2-WET 2	PEM	0.01	ACRE	27.83857300	-97.20904100	NOJD404
T2-WET 3	PEM	0.07	ACRE	27.83876800	-97.20888600	NOJD404
T2-WET 4	PEM	0.03	ACRE	27.83867900	-97.20861100	NOJD404
T2-WET 5	PEM	0.01	ACRE	27.83891200	-97.20854200	NOJD404
T2-WET 6	PEM	0.01	ACRE	27.83897500	-97.20840100	NOJD404
T2-WET 7	PEM	0.03	ACRE	27.84023600	-97.20761300	NOJD404
T2-WET 8	PEM	0.02	ACRE	27.84037900	-97.20745200	NOJD404
T2-WET 9	PEM	0.02	ACRE	27.84127000	-97.20693600	NOJD404
T2-WET 10	PEM	0.15	ACRE	27.84212300	-97.20596800	NOJD404
T2-WET 11	PEM	0.05	ACRE	27.84342900	-97.20518500	NOJD404
T2-WET 12	PEM	0.03	ACRE	27.84362400	-97.20498800	NOJD404
T2-WET 13	PEM	0.08	ACRE	27.84402100	-97.20479800	NOJD404
T2-WET 14	PEM	0.03	ACRE	27.83921100	-97.20844100	NOJD404
T2-WET 15	PEM	0.09	ACRE	27.83945400	-97.20825500	NOJD404
T2-WET 16	PEM	0.05	ACRE	27.83959100	-97.20799000	NOJD404
T2-WET 17	PEM	0.02	ACRE	27.83983300	-97.20792500	NOJD404
T2-WET 18	PEM	0.03	ACRE	27.84001500	-97.20780400	NOJD404
T3-WET 1	PEM	0.03	ACRE	27.84087900	-97.21398200	NOJD404
T3-WET 2	PEM	0.02	ACRE	27.84114300	-97.21364600	NOJD404
T3-WET 3	PEM	0.04	ACRE	27.84139800	-97.21290400	NOJD404
T3-WET 4	PEM	0.02	ACRE	27.84173400	-97.21259300	NOJD404
T3-WET 5	PEM	0.04	ACRE	27.84625300	-97.20711800	NOJD404
T3-WET 6	PEM	0.02	ACRE	27.84575900	-97.20668600	NOJD404
T3-WET 7	PEM	0.03	ACRE	27.84541900	-97.20714700	NOJD404
T3-WET 8	PEM	0.02	ACRE	27.84546400	-97.20743700	NOJD404
T3-WET 9	PEM	0.04	ACRE	27.84559500	-97.20767100	NOJD404
T3-WET 10	PEM	0.02	ACRE	27.84507900	-97.20792100	NOJD404
T3-WET 11	PEM	0.06	ACRE	27.84421700	-97.20918200	NOJD404
T3-WET 12	PEM	0.01	ACRE	27.84384900	-97.20973100	NOJD404
T3-WET 13	PEM	0.01	ACRE	27.84409500	-97.21142400	NOJD404
T4-POND 1	PUB	0.55	ACRE	27.84700000	-97.21281400	NOJD404
T4-POND 2	PUB	0.11	ACRE	27.84390200	-97.21556600	NOJD404
T4-WET 1	PSS	0.01	ACRE	27.84863500	-97.20919400	NOJD404
T4-WET 2	PSS	0.04	ACRE	27.84801000	-97.20991700	NOJD404
T4-WET 3	PSS	1.36	ACRE	27.84693300	-97.21307400	NOJD404
T4-WET 4	PEM	0.33	ACRE	27.84698400	-97.21280300	NOJD404
T4-WET 5	PEM	0.44	ACRE	27.84390100	-97.21553300	NOJD404
T4-WET 6	PEM	0.11	ACRE	27.84853200	-97.20774500	NOJD404
NWI 1	PEM	0.01	ACRE	27.83834708	-97.20364544	NOJD404
NWI 2	PEM	0.03	ACRE	27.83842964	-97.20082238	NOJD404
NWI 3	PEM	0.03	ACRE	27.83838427	-97.20504596	NOJD404
NWI 4	PEM	0.04	ACRE	27.83842745	-97.20181472	NOJD404
NWI 5	PEM	0.04	ACRE	27.83844821	-97.20320923	NOJD404
NWI 6	PEM	0.07	ACRE	27.83851978	-97.19978690	NOJD404
NWI 7	PEM	0.04	ACRE	27.83851147	-97.20805146	NOJD404
NWI 8	PEM	0.04	ACRE	27.83854401	-97.20371672	NOJD404
NWI 9	PEM	0.02	ACRE	27.83856091	-97.20398337	NOJD404
NWI 10	PEM	0.02	ACRE	27.83858206	-97.20007066	NOJD404
NWI 11	PEM	0.04	ACRE	27.83851303	-97.20829763	NOJD404
NWI 12	PEM	0.13	ACRE	27.83867070	-97.20135884	NOJD404
NWI 13	PEM	0.02	ACRE	27.83875437	-97.20043666	NOJD404
NWI 14	PEM	0.04	ACRE	27.83873456	-97.20348587	NOJD404
NWI 15	PEM	0.03	ACRE	27.83877106	-97.20504775	NOJD404
NWI 16	PEM	0.04	ACRE	27.83882382	-97.20072831	NOJD404
NWI 17	PEM	0.04	ACRE	27.83877170	-97.20945187	NOJD404
NWI 18	PEM	0.10	ACRE	27.83893463	-97.19912761	NOJD404
NWI 19	PEM	0.14	ACRE	27.83889893	-97.20321498	NOJD404
NWI 20	PEM	0.03	ACRE	27.83898688	-97.20284473	NOJD404
NWI 21	PEM	0.09	ACRE	27.83895262	-97.20099539	NOJD404
NWI 22	PEM	0.19	ACRE	27.83882946	-97.20799651	NOJD404
NWI 23	PEM	0.31	ACRE	27.83889033	-97.20208859	NOJD404
NWI 24	PEM	0.09	ACRE	27.83905325	-97.20381241	NOJD404
NWI 25	PEM	0.03	ACRE	27.83914761	-97.20054098	NOJD404
NWI 26	PEM	0.05	ACRE	27.83903672	-97.20643666	NOJD404
NWI 27	PEM	0.02	ACRE	27.83905532	-97.20944597	NOJD404
NWI 28	PEM	0.09	ACRE	27.83912293	-97.20180343	NOJD404
NWI 29	PEM	0.02	ACRE	27.83914834	-97.20509129	NOJD404
NWI 30	PEM	0.05	ACRE	27.83916649	-97.20132300	NOJD404
NWI 31	PEM	0.07	ACRE	27.83923139	-97.19957905	NOJD404
NWI 32	PEM	0.02	ACRE	27.83925833	-97.20360035	NOJD404
NWI 33	PEM	0.07	ACRE	27.83918934	-97.20420072	NOJD404
NWI 34	PEM	0.04	ACRE	27.83928001	-97.20250259	NOJD404
NWI 35	PEM	0.03	ACRE	27.83917962	-97.20866653	NOJD404
NWI 36	PEM	0.05	ACRE	27.83922660	-97.20288372	NOJD404
NWI 37	PEM	0.02	ACRE	27.83942936	-97.20056958	NOJD404
NWI 38	PEM	0.02	ACRE	27.83934109	-97.20966656	NOJD404
NWI 39	PEM	0.08	ACRE	27.83931624	-97.20919541	NOJD404
NWI 40	PEM	0.07	ACRE	27.83946214	-97.20089026	NOJD404
NWI 41	PEM	0.06	ACRE	27.83949932	-97.19937097	NOJD404
NWI 42	PEM	0.04	ACRE	27.83950037	-97.20303923	NOJD404
NWI 43	PEM	0.06	ACRE	27.83953304	-97.20199363	NOJD404
NWI 44	PEM	0.03	ACRE	27.83953771	-97.20445552	NOJD404
NWI 45	PEM	0.02	ACRE	27.83958533	-97.20288908	NOJD404
NWI 46	PEM	0.03	ACRE	27.83954597	-97.20750509	NOJD404
NWI 47	PEM	0.02	ACRE	27.83957989	-97.20350136	NOJD404
NWI 48	PEM	0.02	ACRE	27.83963575	-97.20136830	NOJD404
NWI 49	PEM	0.02	ACRE	27.83963407	-97.20330123	NOJD404
NWI 50	PEM	0.02	ACRE	27.83965492	-97.20235221	NOJD404
NWI 51	PEM	0.10	ACRE	27.83966646	-97.19894608	NOJD404

Name	Type	Area	Units	Latitude	Longitude	Waters_Type
NWI 52	PEM	0.05	ACRE	27.83959099	-97.20949782	NOJD404
NWI 53	PEM	0.06	ACRE	27.83967507	-97.20899354	NOJD404
NWI 54	PEM	0.03	ACRE	27.83982444	-97.20028353	NOJD404
NWI 55	PEM	0.09	ACRE	27.83980490	-97.19948569	NOJD404
NWI 56	PEM	0.01	ACRE	27.83985524	-97.20148163	NOJD404
NWI 57	PEM	0.04	ACRE	27.83976294	-97.20729502	NOJD404
NWI 58	PEM	0.03	ACRE	27.83976925	-97.20931119	NOJD404
NWI 59	PEM	0.02	ACRE	27.83988668	-97.20343683	NOJD404
NWI 60	PEM	0.06	ACRE	27.83982175	-97.20830951	NOJD404
NWI 61	PEM	0.03	ACRE	27.83990567	-97.20241005	NOJD404
NWI 62	PEM	0.06	ACRE	27.83994816	-97.19874155	NOJD404
NWI 63	PEM	0.01	ACRE	27.83999719	-97.20132958	NOJD404
NWI 64	PEM	0.02	ACRE	27.84001696	-97.19845190	NOJD404
NWI 65	PEM	0.03	ACRE	27.84001199	-97.20075830	NOJD404
NWI 66	PEM	0.02	ACRE	27.83991030	-97.20965232	NOJD404
NWI 67	PEM	0.12	ACRE	27.83989701	-97.20870165	NOJD404
NWI 68	PEM	0.09	ACRE	27.84000474	-97.20277484	NOJD404
NWI 69	PEM	0.03	ACRE	27.84000432	-97.20747072	NOJD404
NWI 70	PEM	0.02	ACRE	27.84006827	-97.20948810	NOJD404
NWI 71	PEM	0.05	ACRE	27.84014696	-97.20052383	NOJD404
NWI 72	PEM	0.04	ACRE	27.84016596	-97.20339903	NOJD404
NWI 73	PEM	0.02	ACRE	27.84021233	-97.20124209	NOJD404
NWI 74	PEM	0.03	ACRE	27.84020013	-97.20836109	NOJD404
NWI 75	PEM	0.05	ACRE	27.84018774	-97.20806741	NOJD404
NWI 76	PEM	0.02	ACRE	27.84028491	-97.20306180	NOJD404
NWI 77	PEM	0.03	ACRE	27.84030582	-97.20870038	NOJD404
NWI 78	PEM	0.05	ACRE	27.84032729	-97.20696339	NOJD404
NWI 79	PEM	0.02	ACRE	27.84042437	-97.20040492	NOJD404
NWI 80	PEM	0.03	ACRE	27.84036692	-97.20793800	NOJD404
NWI 81	PEM	0.02	ACRE	27.84037596	-97.20724046	NOJD404
NWI 82	PEM	0.05	ACRE	27.84043282	-97.20088414	NOJD404
NWI 83	PEM	0.06	ACRE	27.84042395	-97.20191486	NOJD404
NWI 84	PEM	0.04	ACRE	27.84048153	-97.20426265	NOJD404
NWI 85	PEM	0.03	ACRE	27.84055981	-97.20143084	NOJD404
NWI 86	PEM	0.01	ACRE	27.84057479	-97.20474363	NOJD404
NWI 87	PEM	0.02	ACRE	27.84054944	-97.20881892	NOJD404
NWI 88	PEM	0.03	ACRE	27.84061106	-97.20388322	NOJD404
NWI 89	PEM	0.04	ACRE	27.84070332	-97.19940314	NOJD404
NWI 90	PEM	0.03	ACRE	27.84066769	-97.20445550	NOJD404
NWI 91	PEM	0.08	ACRE	27.84061253	-97.20771609	NOJD404
NWI 92	PEM	0.03	ACRE	27.84076429	-97.19996219	NOJD404
NWI 93	PEM	0.02	ACRE	27.84076178	-97.20257837	NOJD404
NWI 94	PEM	0.02	ACRE	27.84070623	-97.20890189	NOJD404
NWI 95	PEM	0.06	ACRE	27.84078056	-97.20038178	NOJD404
NWI 96	PEM	0.04	ACRE	27.84081397	-97.20084967	NOJD404
NWI 97	PEM	0.02	ACRE	27.84083835	-97.20157911	NOJD404
NWI 98	PEM	0.03	ACRE	27.84080816	-97.20300088	NOJD404
NWI 99	PEM	0.03	ACRE	27.84089571	-97.19815253	NOJD404
NWI 100	PEM	0.04	ACRE	27.84080625	-97.20698584	NOJD404
NWI 101	PEM	0.03	ACRE	27.84081262	-97.20925205	NOJD404
NWI 102	PEM	0.03	ACRE	27.84085645	-97.20428575	NOJD404
NWI 103	PEM	0.02	ACRE	27.84088857	-97.20486936	NOJD404
NWI 104	PEM	0.02	ACRE	27.84088300	-97.20465736	NOJD404
NWI 105	PEM	0.02	ACRE	27.84088088	-97.20754557	NOJD404
NWI 106	PEM	0.03	ACRE	27.84090804	-97.20524337	NOJD404
NWI 107	PEM	0.05	ACRE	27.84091927	-97.20135866	NOJD404
NWI 108	PEM	0.02	ACRE	27.84094491	-97.20447504	NOJD404
NWI 109	PEM	0.04	ACRE	27.84091533	-97.20787876	NOJD404
NWI 110	PEM	0.02	ACRE	27.84104789	-97.19937378	NOJD404
NWI 111	PEM	0.02	ACRE	27.84095676	-97.20672201	NOJD404
NWI 112	PEM	0.03	ACRE	27.84096433	-97.20613582	NOJD404
NWI 113	PEM	0.02	ACRE	27.84108647	-97.19870382	NOJD404
NWI 114	PEM	0.03	ACRE	27.84101604	-97.20582826	NOJD404
NWI 115	PEM	0.02	ACRE	27.84107857	-97.20285663	NOJD404
NWI 116	PEM	0.03	ACRE	27.84102753	-97.20826647	NOJD404
NWI 117	PEM	0.08	ACRE	27.84105504	-97.19989832	NOJD404
NWI 118	PEM	0.05	ACRE	27.84111898	-97.20093381	NOJD404
NWI 119	PEM	0.04	ACRE	27.84104047	-97.20896356	NOJD404
NWI 120	PEM	0.01	ACRE	27.84117386	-97.20364134	NOJD404
NWI 121	PEM	0.02	ACRE	27.84114324	-97.20784688	NOJD404
NWI 122	PEM	0.04	ACRE	27.84118065	-97.20105544	NOJD404
NWI 123	PEM	0.06	ACRE	27.84122057	-97.20057404	NOJD404
NWI 124	PEM	0.02	ACRE	27.84121007	-97.20853243	NOJD404
NWI 125	PEM	0.03	ACRE	27.84125751	-97.20506166	NOJD404
NWI 126	PEM	0.03	ACRE	27.84125542	-97.19814197	NOJD404
NWI 127	PEM	0.02	ACRE	27.84135487	-97.20813854	NOJD404
NWI 128	PEM	0.02	ACRE	27.84136070	-97.20899867	NOJD404
NWI 129	PEM	0.02	ACRE	27.84135676	-97.20362217	NOJD404
NWI 130	PEM	0.04	ACRE	27.84143147	-97.20321624	NOJD404
NWI 131	PEM	0.01	ACRE	27.84146784	-97.20277701	NOJD404
NWI 132	PEM	0.04	ACRE	27.84145253	-97.20038653	NOJD404
NWI 133	PEM	0.03	ACRE	27.84144114	-97.20787312	NOJD404
NWI 134	PEM	0.03	ACRE	27.84151536	-97.20090719	NOJD404
NWI 135	PEM	0.06	ACRE	27.84155221	-97.19837322	NOJD404
NWI 136	PEM	0.02	ACRE	27.84166082	-97.19874939	NOJD404
NWI 137	PEM	0.04	ACRE	27.84162799	-97.20486854	NOJD404
NWI 138	PEM	0.02	ACRE	27.84171918	-97.19917579	NOJD404
NWI 139	PEM	0.02	ACRE	27.84166824	-97.20354843	NOJD404
NWI 140	PEM	0.04	ACRE	27.84164175	-97.20600295	NOJD404
NWI 141	PEM	0.11	ACRE	27.84160831	-97.20534791	NOJD404
NWI 142	PEM	0.05	ACRE	27.84174958	-97.20561771	NOJD404
NWI 143	PEM	0.03	ACRE	27.84182294	-97.20407316	NOJD404
NWI 144	PEM	0.03	ACRE	27.84186746	-97.20643202	NOJD404
NWI 145	PEM	0.04	ACRE	27.84189367	-97.20513920	NOJD404
NWI 146	PEM	0.05	ACRE	27.84189886	-97.20605787	NOJD404
NWI 147	PEM	0.02	ACRE	27.84195994	-97.20547976	NOJD404
NWI 148	PEM	0.02	ACRE	27.84197232	-97.20489933	NOJD404