

MAY 02 2017

WESTWARD

P.O. Box 2205 Boerne, Texas 78006
(830) 249-8284 Fax: (830) 249-0221
TBPE REG. NO.: F-4524
TBPG REG. NO.: 50112

This product is for informational purposes and may not have been prepared for or be suitable for legal, engineering, or surveying purposes. It does not represent an on-the-ground survey and represents only the approximate relative location of property boundaries.

General Location

Individual Permit Application
Aaron Concrete Contractors, LP
State Highway 35, Aransas Pass, San Patricio County, Texas

| REV | DESCRIPTION | BY | DATE |
|-----|-------------|----|------|
| | | | |
| | | | |

IMAGE: ESRI Street Map Basemap

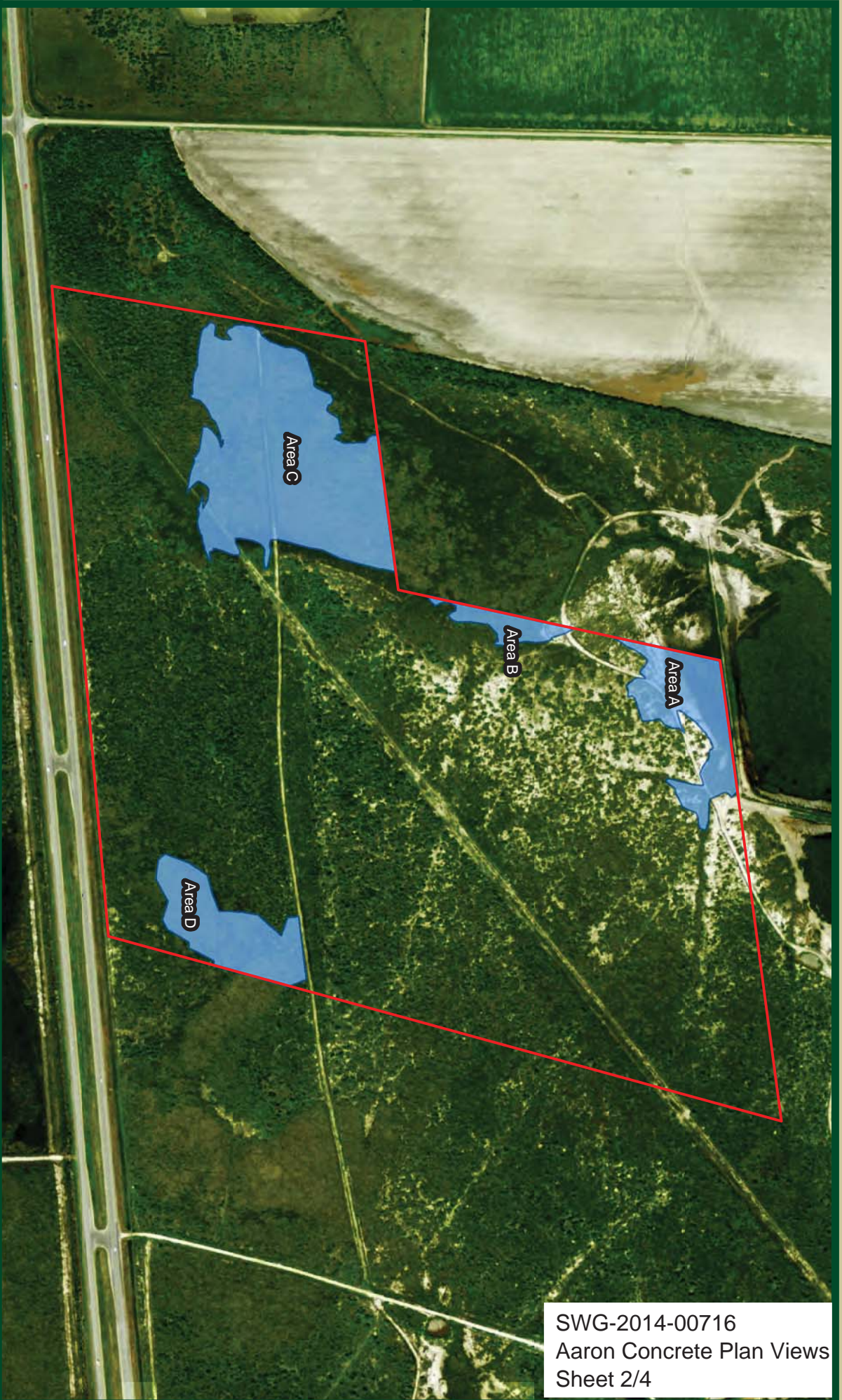
| | |
|-------------|-----------|
| ISSUE DATE: | 04/2017 |
| DRAWN BY: | ML |
| CHECKED BY: | EHW |
| SCALE: 1" = | 1 mile |
| JOB #: | 10378-038 |

FIGURE #

1

OF 6

SWG-2014-00716
Aaron Concrete Plan Views
Sheet 1/4

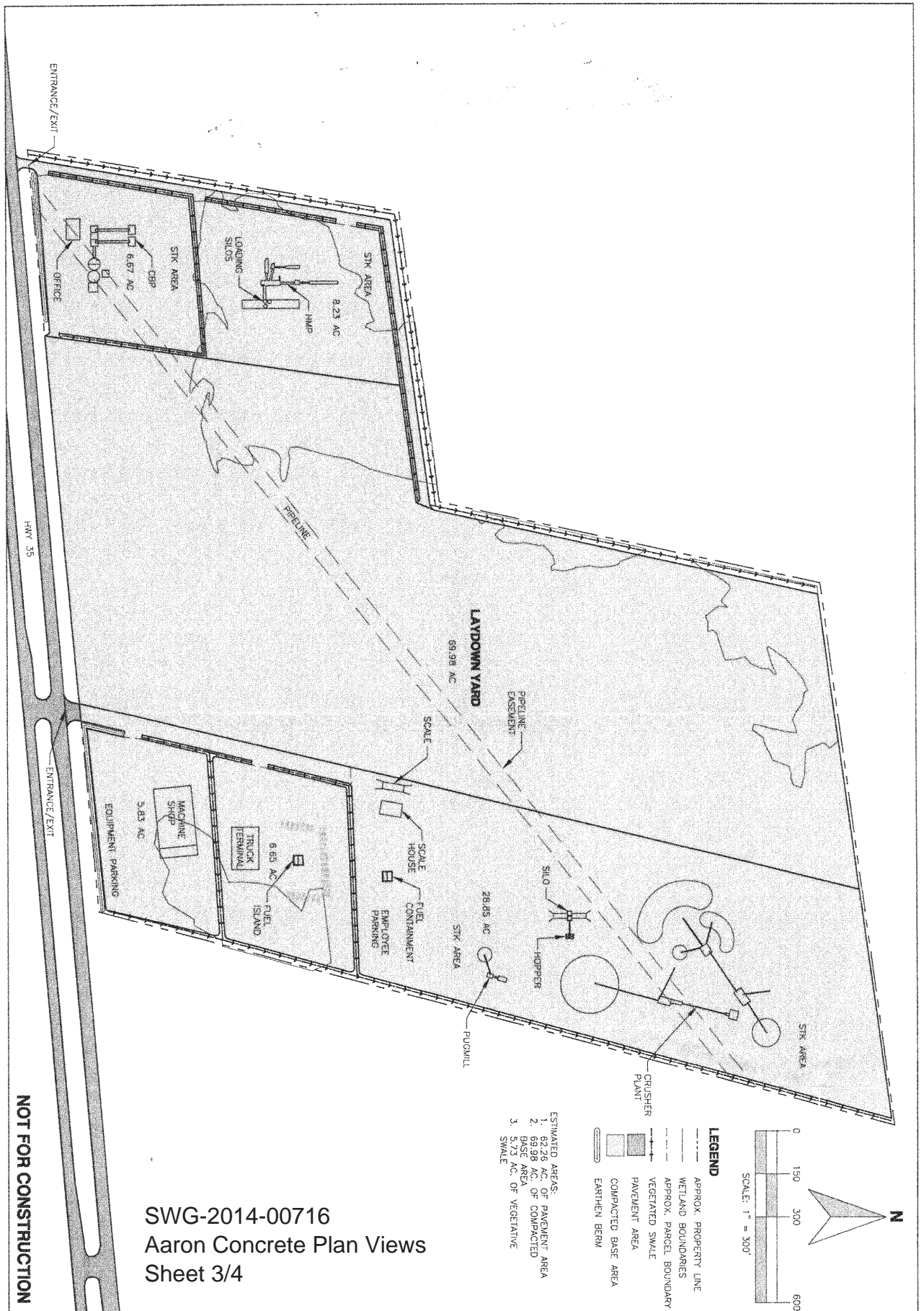


SWG-2014-00716
Aaron Concrete Plan Views
Sheet 2/4

This map is intended for planning purposes only. All map data should be considered preliminary. All boundaries and designations are subject to confirmation.

550 275 0 550
1:6,600 1 inch = 550 feet
Feet

Subject Area
Areas of Jurisdiction



- ESTIMATED AREAS:**
1. 62.26 AC. OF PAVEMENT AREA
 2. 69.98 AC. OF COMPACTED
 3. 5.83 AC. OF VEGETATED SWALE

| DEVELOPMENT PLAN - ALT. 4 | | | |
|---------------------------------|-------------|----|------|
| ARANSAS PASS | | | |
| AARON CONCRETE, L.L.C. | | | |
| HWY 35 BYPASS, ARANSAS PASS, TX | | | |
| REV. | DESCRIPTION | BY | DATE |
| | | | |

FOR REVIEW ONLY

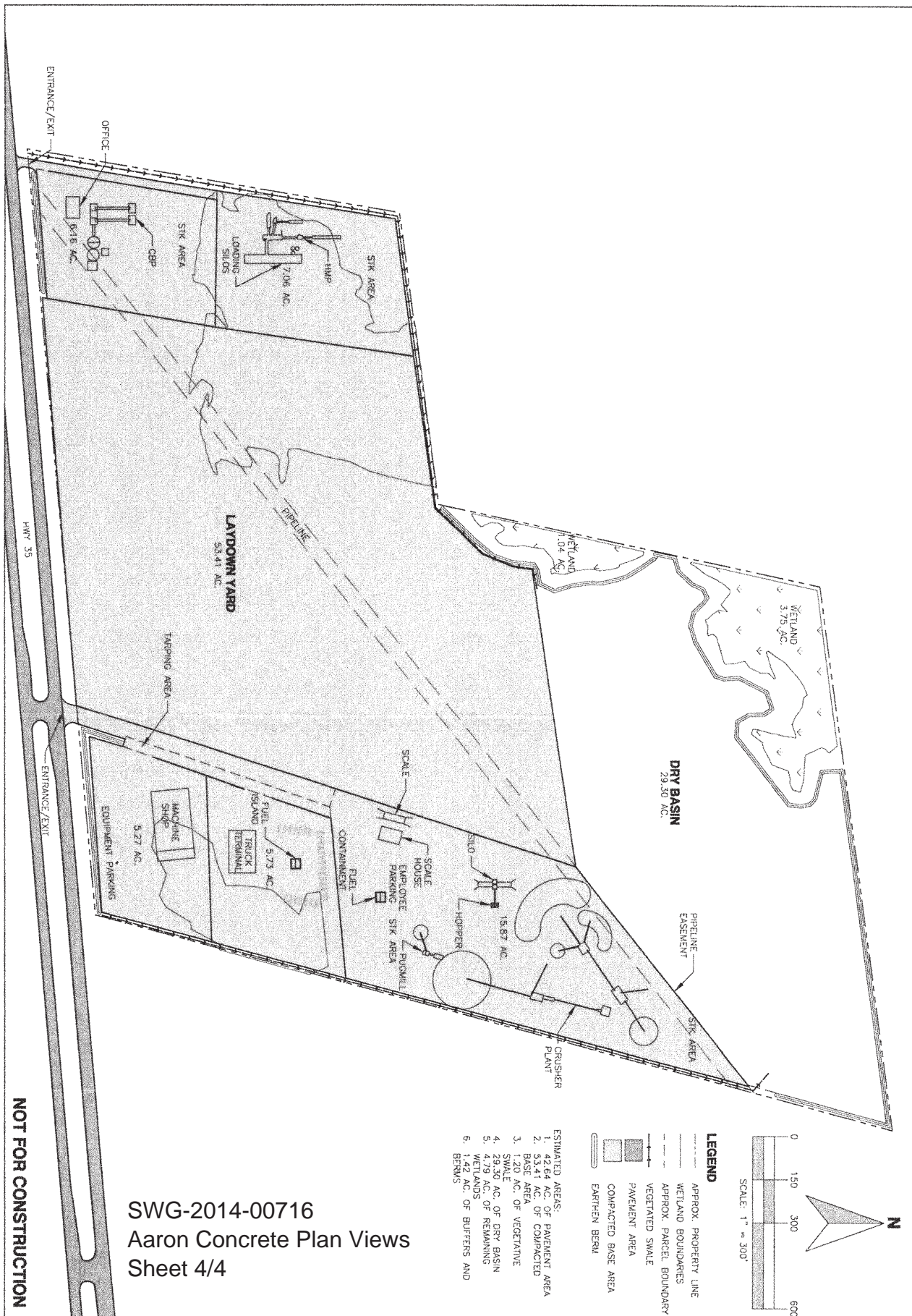
Curt G. Cornbell, P.E.
License No. 106851

WESTWARD
Environmental, Engineering, Natural Resources.
P.O. Box 2205 Boerne, Texas 78006
(830) 249-8284 Fax: (830) 249-0221
TBPE REG. NO.: F-4524

| | | |
|-------------|------------|-----|
| IMAGE: | | N/A |
| ISSUE DATE: | APRIL 2014 | |
| DRAWN BY: | NM | |
| CHECKED BY: | CGC | |
| SCALE: | 1" = 300 | |
| JOB #: | 10378-038 | |

1
OF 2

MAY 02 2017



SWG-2014-00716
Aaron Concrete Plan Views
Sheet 4/4

DEVELOPMENT PLAN - ALT. 5

ARANSAS PASS
AARON CONCRETE, LLC.
HWY 35 BYPASS, ARANSAS PASS, TX

| REV. | DESCRIPTION | BY | DATE |
|------|-------------|----|------|
| | | | |
| | | | |

**FOR
REVIEW
ONLY**

Curt G. Campbell, P.E.
License No. 106851

WESTWARD
Environmental, Engineering, Natural Resources.
P.O. Box 2205 Boerne, Texas 78006
(830) 249-8284 Fax: (830) 249-0221
TBPE REG. NO.: F-4524

| | |
|-------------|------------|
| IMAGE: | N/A |
| ISSUE DATE: | APRIL 2017 |
| DRAWN BY: | NM |
| CHECKED BY: | CGC |
| SCALE: | 1" = 300' |
| JOB #: | 10378-038 |

SHEET #:
2
OF 2