

Co-developing Solutions through *Engineering With Nature and Regional Sediment Management*

Dr. Burton Suedel
Research Biologist
Engineer Research and Development Center
Environmental Laboratory

Ms. Linda Lillycrop
USACE RSM Program Manager
Engineer Research and Development Center
Coastal and Hydraulics Laboratory

USACE Galveston District
Winter Stakeholder Partnering Forum
Galveston, TX
3 March 2016



US Army Corps of Engineers
BUILDING STRONG®

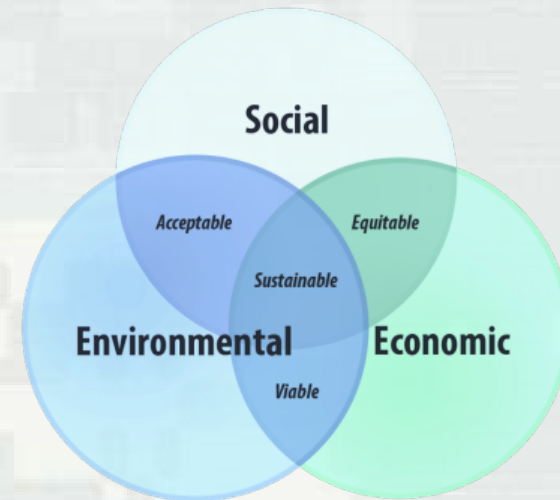


Engineering With Nature...

...the intentional alignment of natural and engineering processes to efficiently and sustainably deliver economic, environmental and social benefits through collaborative processes.

Key Elements:

- Science and engineering that produces operational efficiencies
- Using natural process to maximum benefit
- Broaden and extend the benefits provided by projects
- Science-based collaborative processes to organize and focus interests, stakeholders, and partners



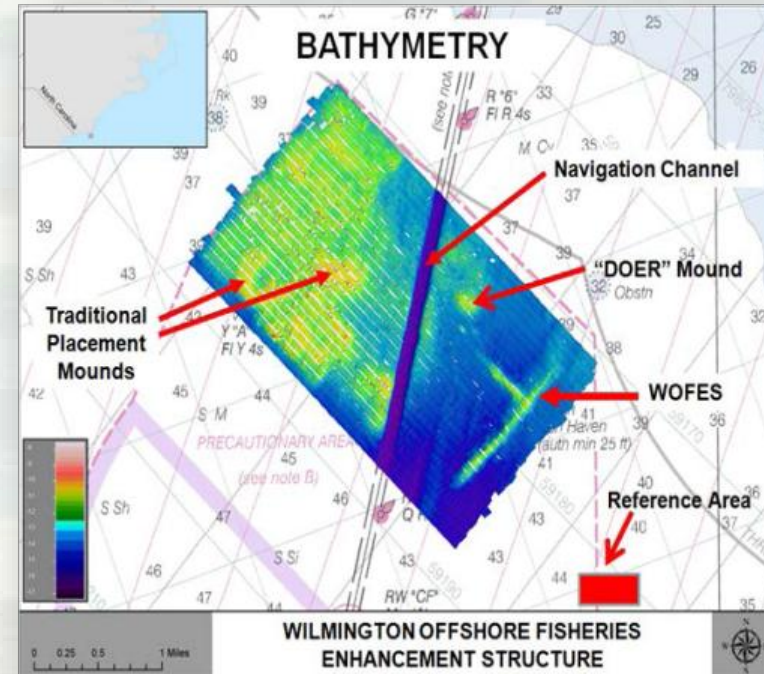
Evia Island, Galveston Bay, TX

- 6-acre island was constructed using sediment dredged during the deepening of the Houston Ship Channel in 1998
- Island provides substantial bird and other habitat
- Producing significant environmental benefits



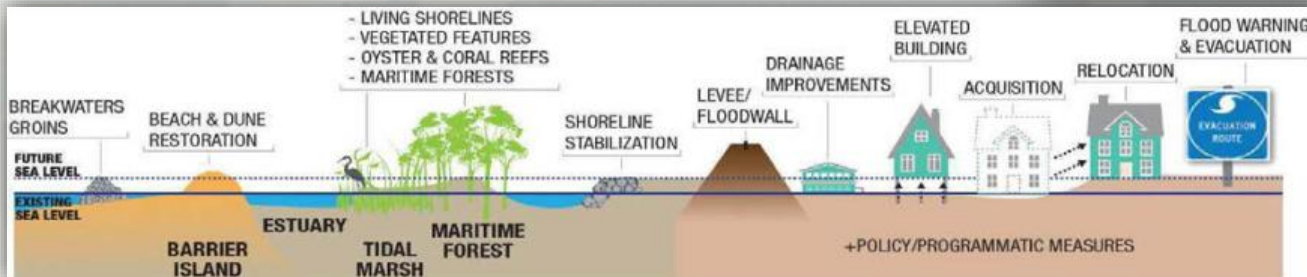
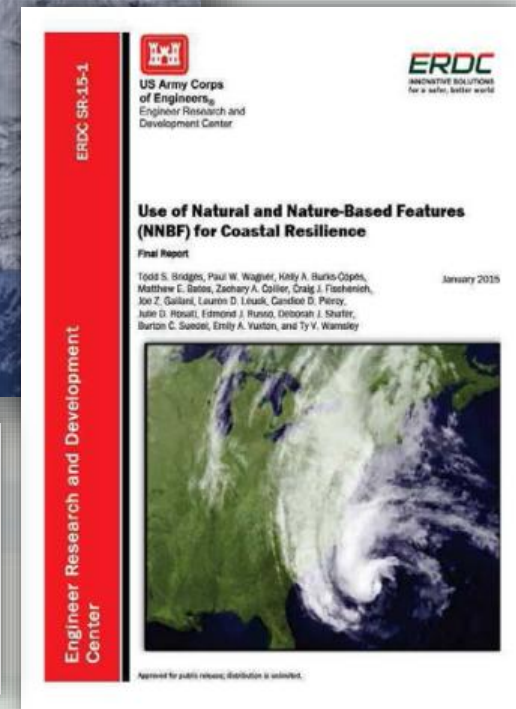
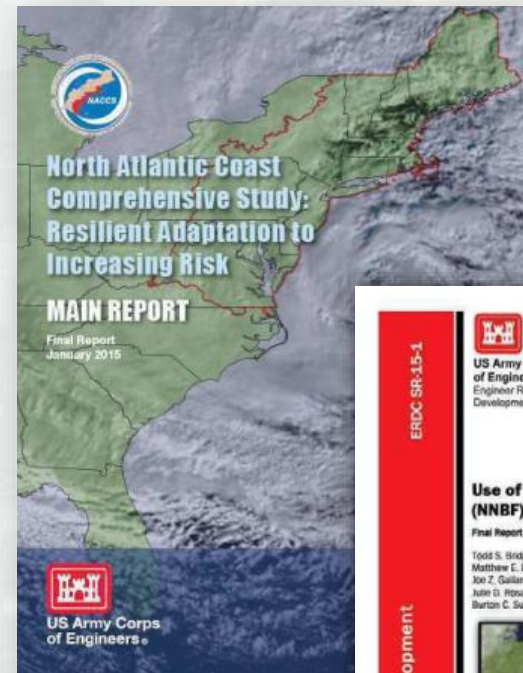
WOFES, Wilmington, NC

- Created in 1994-1997 from 764,600 cubic meters of limestone dredged as part of the Wilmington channel deepening
- Located three nautical miles off of the mouth of the Cape Fear River in North Carolina
- Location and design of reef involved extensive participation by stakeholders
- North Carolina Department of Environment and Natural Resources supported the project as a local sponsor
- Produced significant social benefits as a popular destination for fishing



Natural and Nature-Based Features: North Atlantic Coast Comprehensive Study

- Opportunities to integrate Natural and Nature-Based Features (NNBF) with structural and non-structural measures to provide multiple lines of defense against storms and sea level rise, generating a full array of relevant economic, environmental and social ecosystem goods and services



See Bridges et al. (2015)
<http://www.nad.usace.army.mil/CompStudy>



Natural and Nature-Based Infrastructure at a Glance

GENERAL COASTAL RISK REDUCTION PERFORMANCE FACTORS:
STORM INTENSITY, TRACK, AND FORWARD SPEED, AND SURROUNDING LOCAL BATHYMETRY AND TOPOGRAPHY



Dunes and Beaches

Benefits/Processes
Break offshore waves
Attenuate wave energy
Slow inland water transfer

Performance Factors
Berm height and width
Beach Slope
Sediment grain size and supply
Dune height, crest, width
Presence of vegetation



Vegetated Features: Salt Marshes, Wetlands, Submerged Aquatic Vegetation (SAV)

Benefits/Processes
Break offshore waves
Attenuate wave energy
Slow inland water transfer
Increase infiltration

Performance Factors
Marsh, wetland, or SAV elevation and continuity
Vegetation type and density



Oyster and Coral Reefs

Benefits/Processes
Break offshore waves
Attenuate wave energy
Slow inland water transfer

Performance Factors
Reef width, elevation and roughness



Barrier Islands

Benefits/Processes
Wave attenuation and/or dissipation
Sediment stabilization

Performance Factors
Island elevation, length, and width
Land cover
Breach susceptibility
Proximity to mainland shore



Maritime Forests/Shrub Communities

Benefits/Processes
Wave attenuation and/or dissipation
Shoreline erosion stabilization
Soil retention

Performance Factors
Vegetation height and density
Forest dimension
Sediment composition
Platform elevation



Coastal NJ, Philadelphia District



December 2014



Stone Harbor

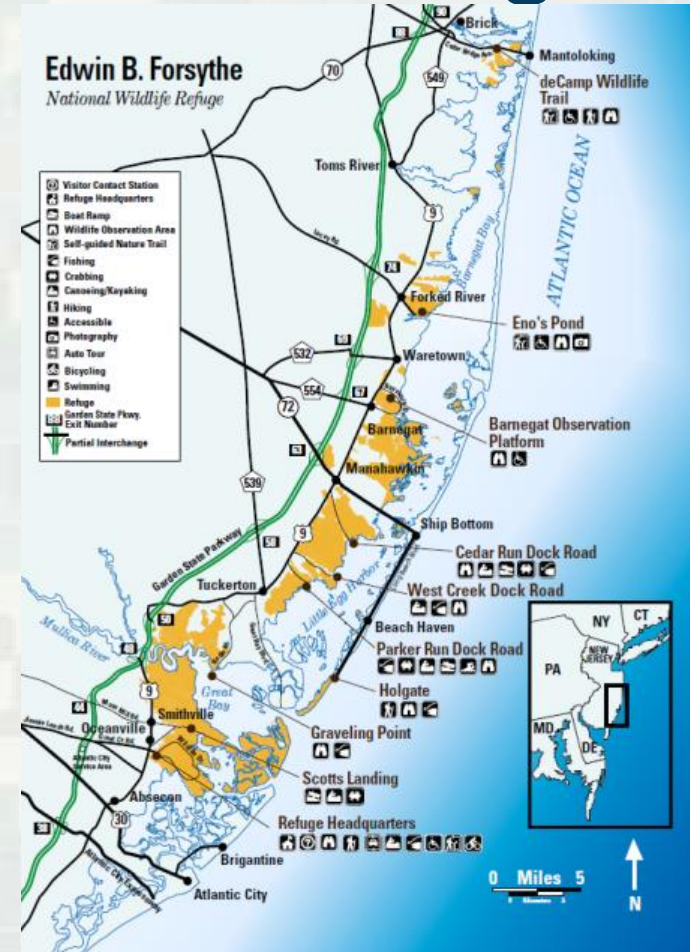


Avalon



US Fish and Wildlife Service Forsythe National Wildlife Refuge

- Forsythe NWR: >40,000 acres of wetlands and other habitat in coastal NJ
- Collaboration objective: Enhance ecosystem resilience through engineering and restoration
- Means: Smart use of sediment resources and EWN principles and practices



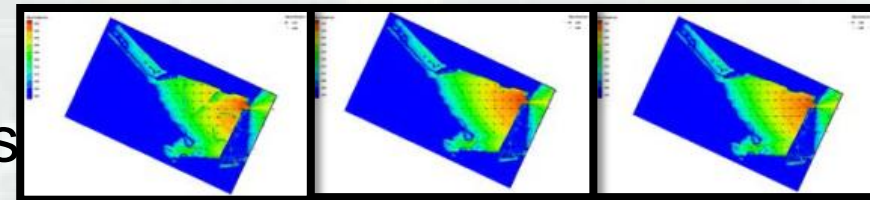
Horseshoe Bend, Atchafalaya River

- Options for managing dredged material via shore-based wetland creation were exhausted
- Strategic placement of sediment (0.5-1.8 mcy/1-3 yrs) was used to create a ~35 ha island
- Producing significant environmental and engineering benefits
- Project won WEDA's 2015 Award for Environmental Excellence



Hamilton Wetland, San Pablo Bay

- Beneficial use of dredged material to restore army air field to wetlands
- Dredged material was placed directly to contour wetland
- ERDC monitoring of new wetland to quantify waves, other physical processes and accretion
- ERDC modeling wave generation and dissipation, testing different shapes for barriers to fetch
- Plants will volunteer in tidal areas as sufficient accretion occurs



Linear Berms (As-Built)

No Berms (Control)

Mounds (ala Sears Pt.)



USACE Galveston and Buffalo Districts: EWN “Proving Grounds”



US Army Corps
of Engineers,
Philadelphia District



US Army Corps
of Engineers
Buffalo District
BUILDING STRONG®

- EWN Proving Ground Kick-Off Workshops
 - ▶ October (SWG) and December (LRB) 2014
 - ▶ ~70 participants
 - ▶ SWG, SWD, LRB, ERDC, IWR and HQ
- Identified opportunities to implement EWN within current and future programs and projects
- Emphasis on solution co-development

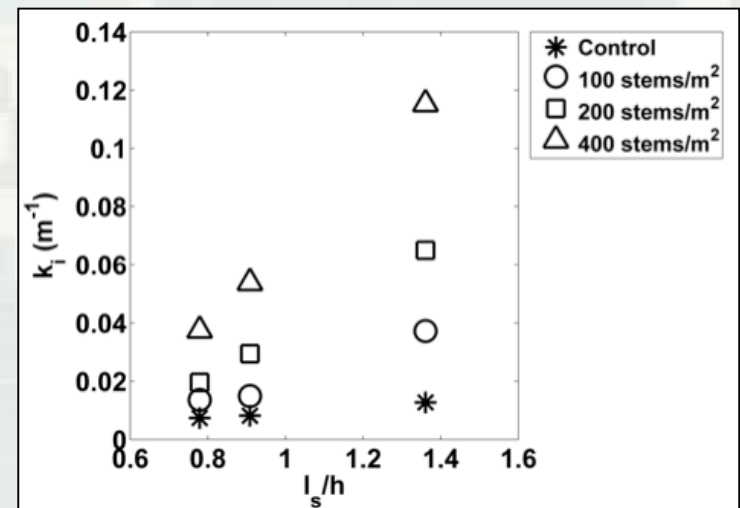


BUILDING STRONG®

Innovative solutions for a safer, better world

R&D Example: Engineering Performance of NNBF

- What are the engineering benefits of wetlands with respect to waves?
- Flume studies being performed in the 10 ft flume
 - Complemented by examination of sediment processes and field studies
- Wave attenuation was found to:
 - increase with stem density
 - increase with submergence ratio
 - slight increase with incident wave height
- Results used to update STWAVE



Science, Engineering, Technology Research Targets

- Fundamental processes
 - ▶ Sediment transport through and around NNBF
 - ▶ Long-term engineering and environmental performance of features
 - ▶ Environmental Services provided by engineered features and structures
 - ▶ Processes contributing to system-scale resilience
- Modeling systems that support broad-scale application
 - ▶ Planners, stakeholders and decision-makers
 - ▶ Engineering design
 - ▶ Operations and maintenance
- Reliable, cost-efficient monitoring technologies
 - ▶ Measuring system evolution
 - ▶ Infrastructure/feature performance
- Demonstration/pilot projects to innovate, evaluate, and learn at relevant field scales
 - ▶ Facilitate necessary collaboration
 - ▶ Evolve organizational culture and practice
 - ▶ Produce credible evidence of success
 - ▶ Fuel the “power of the story”



ERDC

Concluding Thoughts

- Focus energy to motivate and facilitate innovation in both technical and business processes
- Important to elevate communication about advancing practice within and external to USACE
- Accelerate progress through co-development of solutions!
 - ▶ Districts with ERDC
 - ▶ USACE with others



ERDC