

CORPUS CHRISTI SHIP CHANNEL CHANNEL IMPROVEMENT PROJECT

USACE Galveston District Summer Stakeholder Partnering Forum

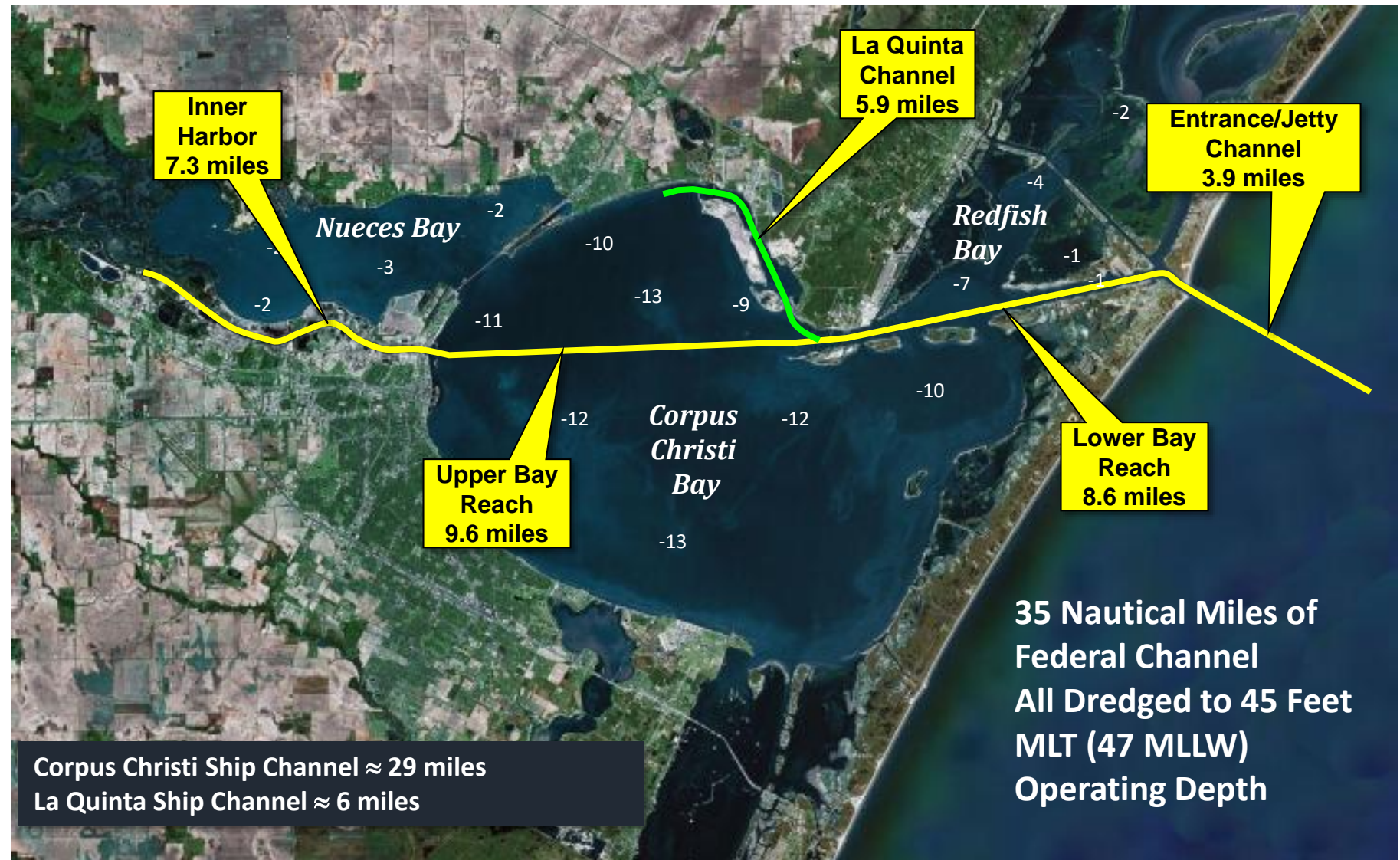
Daniel J. Koesema, P.E., CFM | Chief of Channel Development, Port Corpus Christi

Nicholas A. Laskowski, PG., PWS | Project Manager, U.S. Army Corps of Engineers



August 14, 2019

Deep Draft Channel System



DMPA Inventory

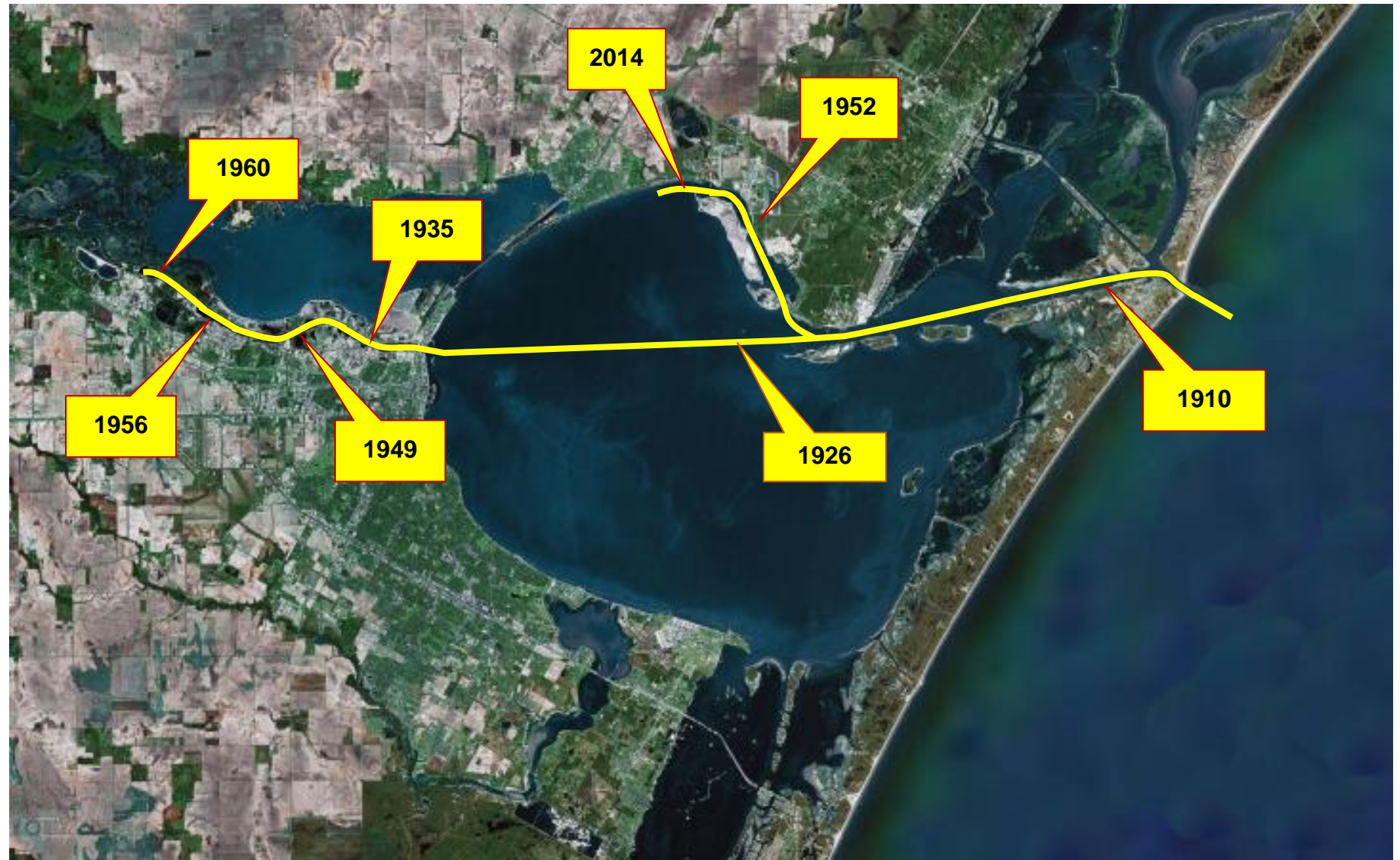


History of Channel Development

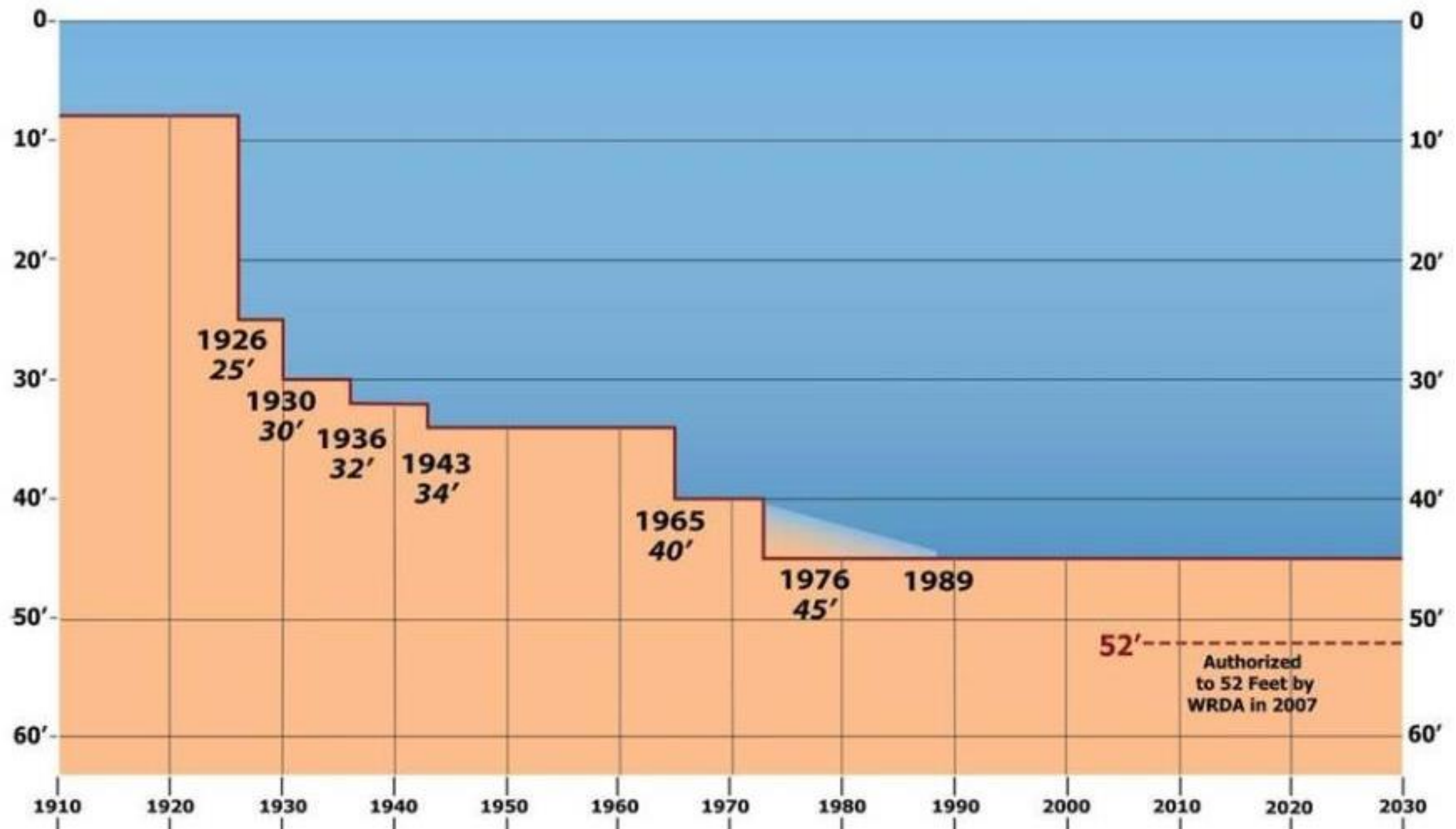




History of Channel Development

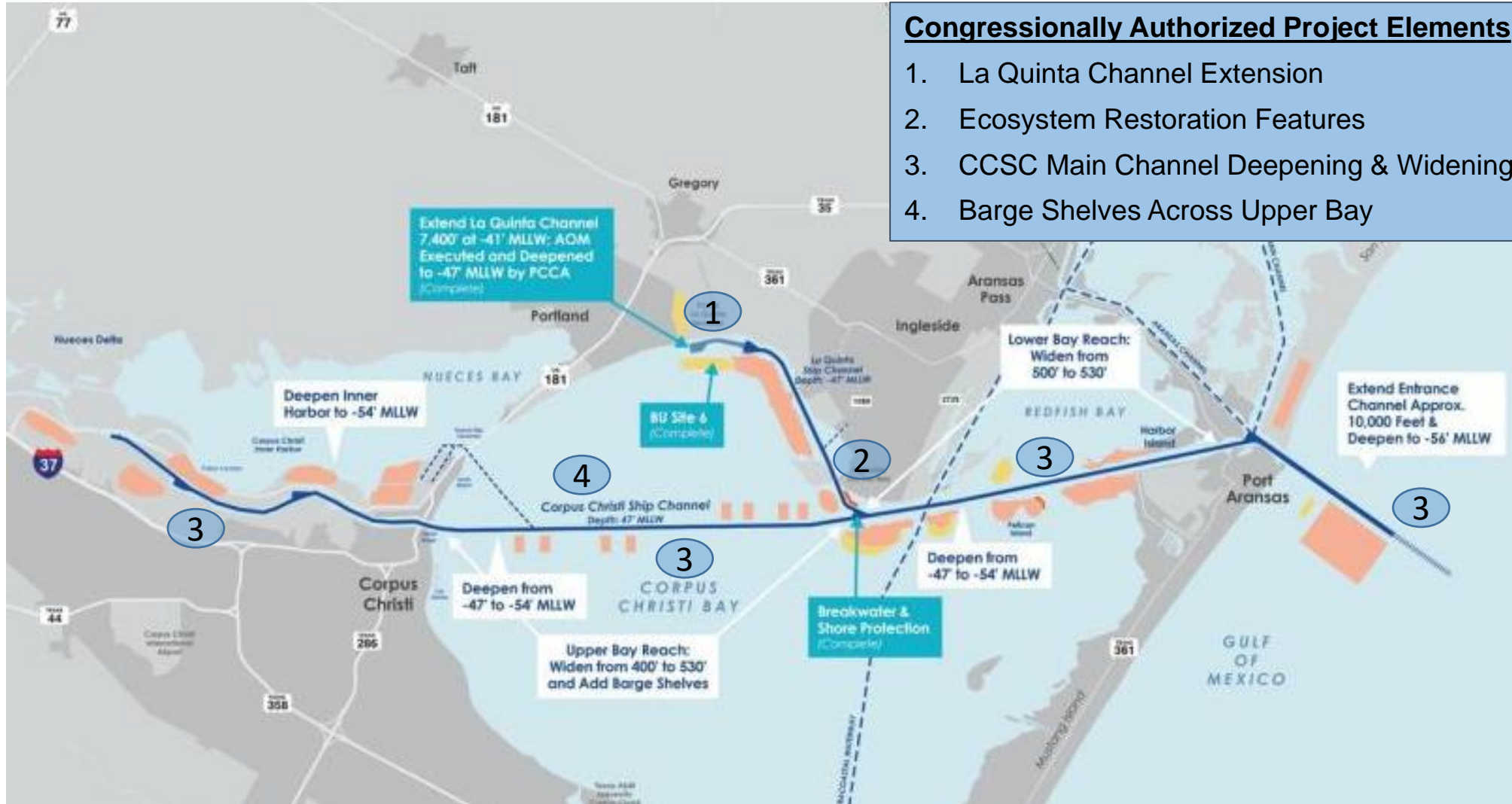


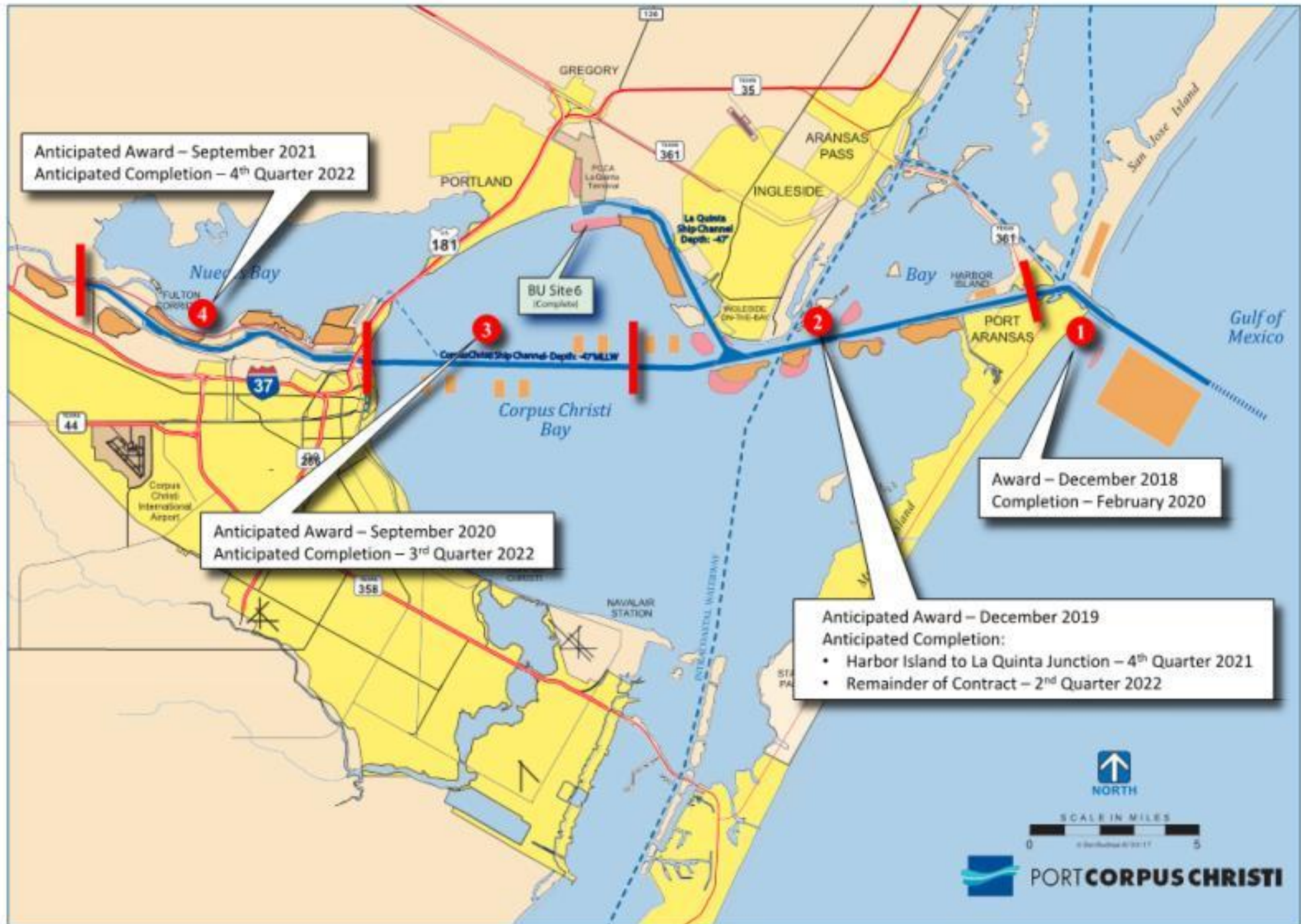
Channel Depth History



Corpus Christi Ship Channel Improvement Project

Project Overview



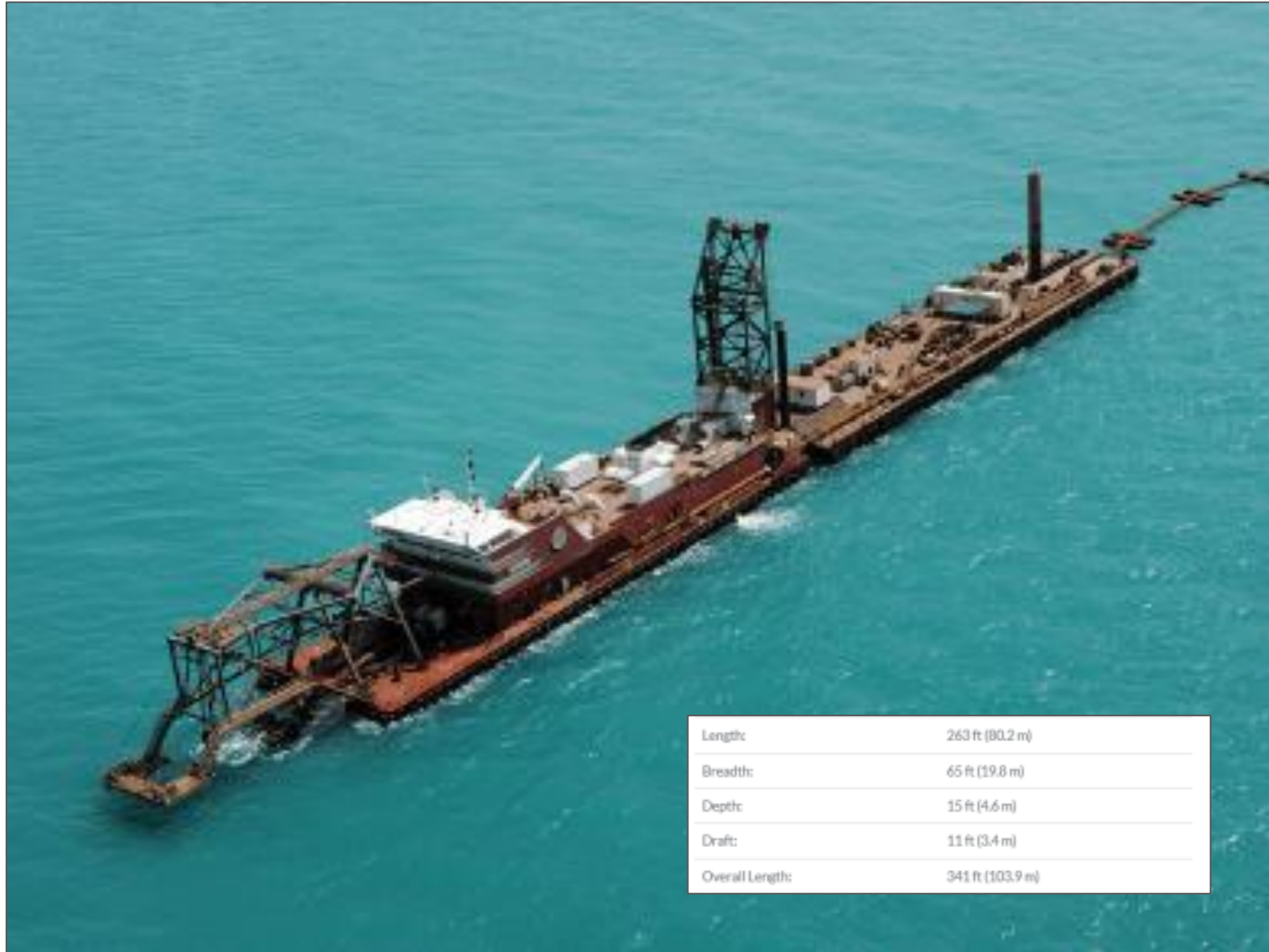




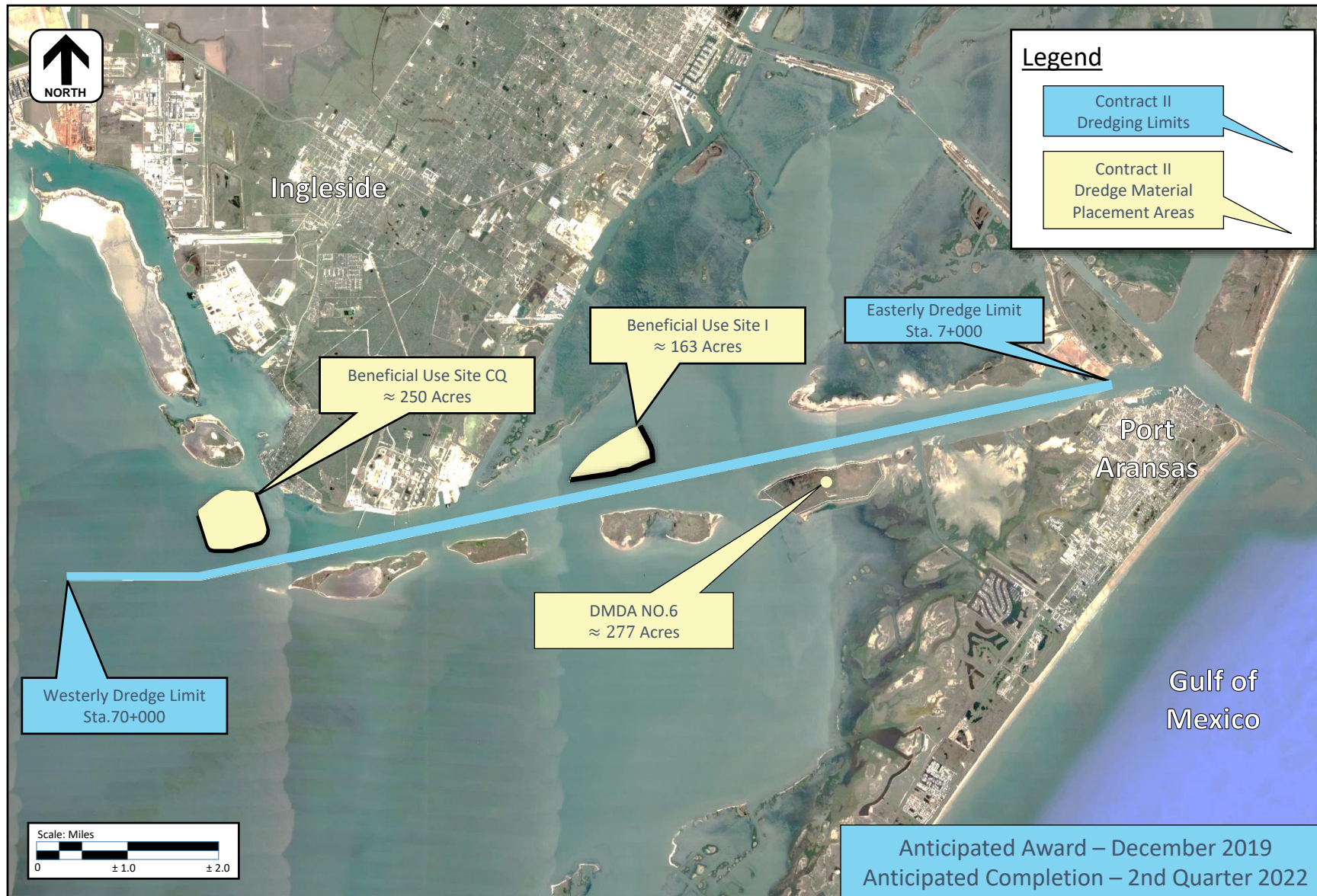
Ellis Island Hopper Dredge

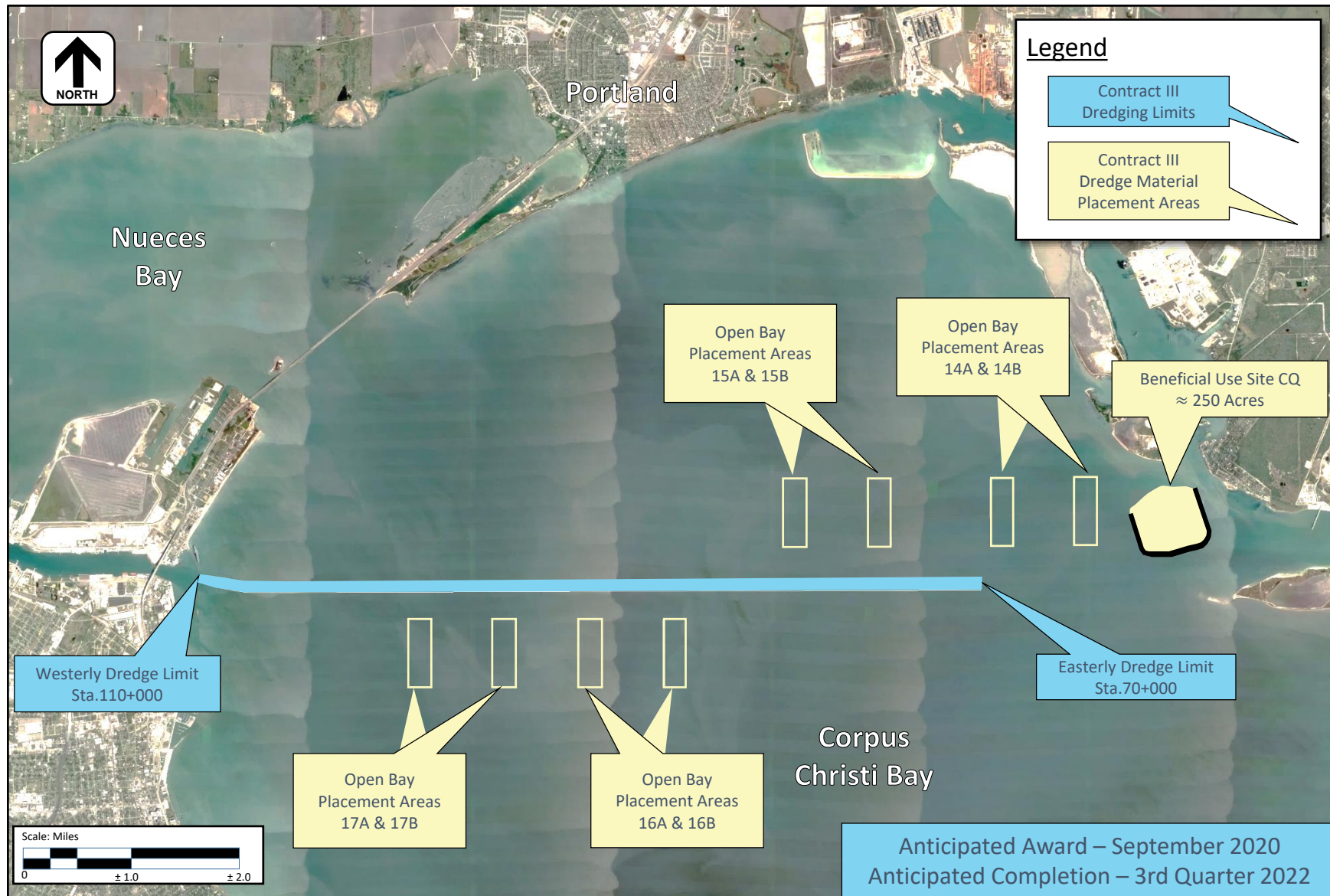


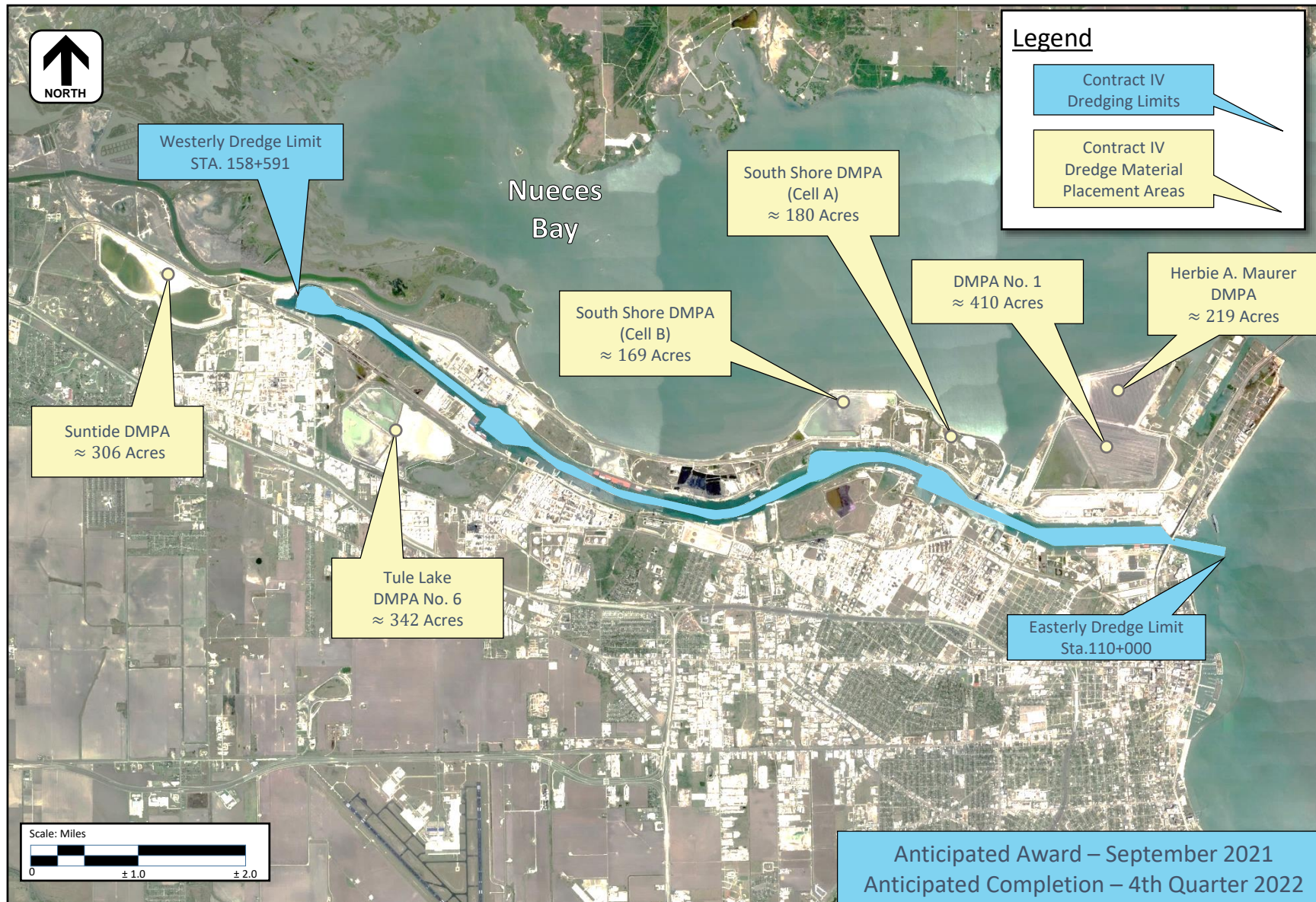
Carolina Cutter Suction Dredge



Length:	263 ft (80.2 m)
Breadth:	65 ft (19.8 m)
Depth:	15 ft (4.6 m)
Draft:	11 ft (3.4 m)
Overall Length:	341 ft (103.9 m)







Project Funding Main Channel & Barge Lane Elements

☐ **Federal Funding Secured to Date = \$95 million**

- \$23 million FY 2018 USACE Work Plan
- 13 million FY 2019 President's Budget
- \$59 million FY 2019 USACE Work Plan

☐ **Federal Funding Proposed, Not Yet Ratified**

- \$53 million FY 2020 President's Budget

☐ **PCCA Funding Provided to USACE to Date = \$82 million**

- 78.8 million cash
- \$3.2 million work in kind

Other Channel Development Initiatives



PORT **CORPUS CHRISTI**®

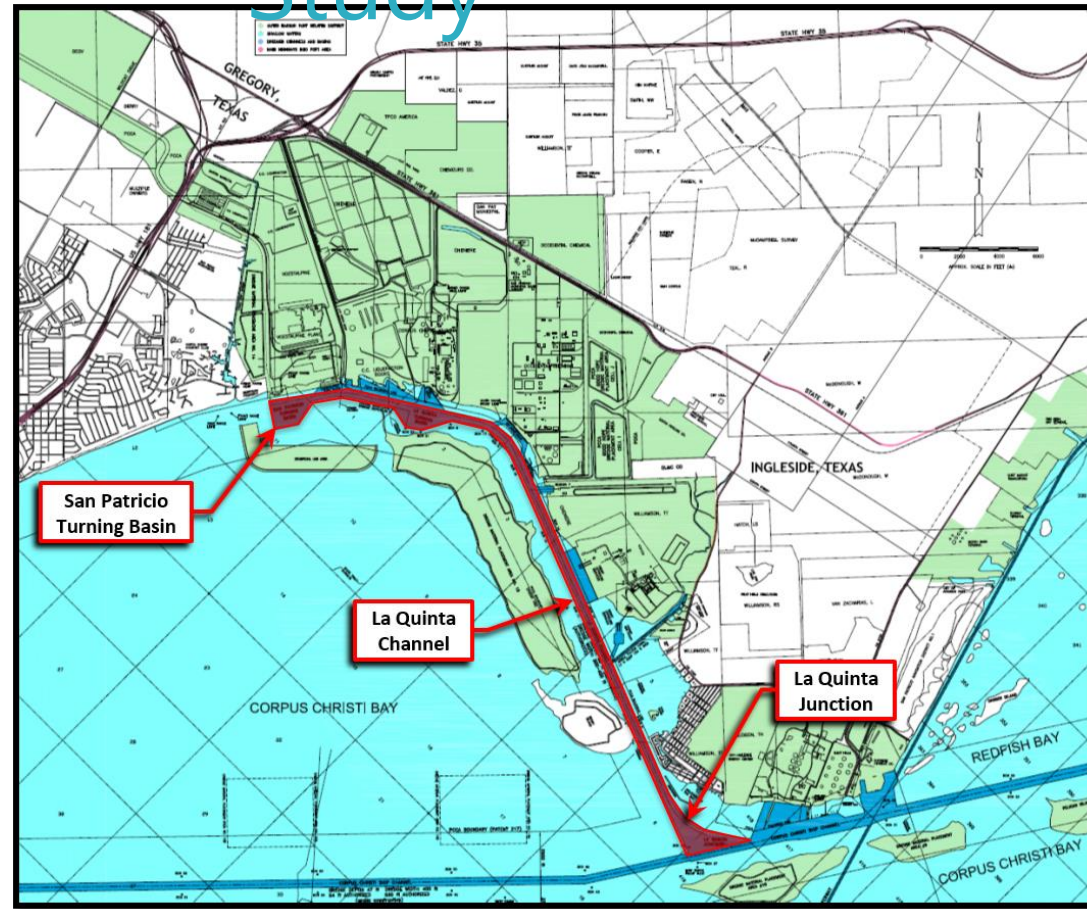
Corpus Christi Ship Channel Deepening Project

- Port completed study of deepening the Entrance Channel from the Gulf of Mexico through Harbor Island
- Deepen to between 75 and 85 feet MLLW to allow fully loaded larger vessels
- Better prepare Port for long-term future for commodities



La Quinta Channel Widening & Deepening Feasibility Study

- Study Authorized in WRDA 2016
- \$500,000 included in the FY 2018 work plan.
- \$1,000,000 included in FY 2019 work plan
- Study to investigate improvements to the La Quinta Ship Channel
- Ports goal is to widen and deepen the La Quinta Ship Channel from -47 ft MLLW to -54 ft MLLW to match the authorized depth of the Corpus Christi Ship Channel.
- Smart Planning 3x3x3 rule



DMPA Capacity for Third Party Use

- Creating Capacity under Section 217(a) Authority
- Creating additional capacity at PCCA Port owned DMPA's
- Long Term Planning for future DMPA's



An aerial photograph of a port area, likely Corpus Christi, Texas. A large oil tanker is docked at a pier on the left. The waterway is filled with various industrial structures, including storage tanks, refineries, and smaller vessels. The background shows a cityscape and a body of water with wind turbines in the distance. The image is overlaid with a large, semi-transparent blue and green geometric shape that frames the central text.

THANK YOU.
QUESTIONS?



PORT **CORPUS CHRISTI**®

