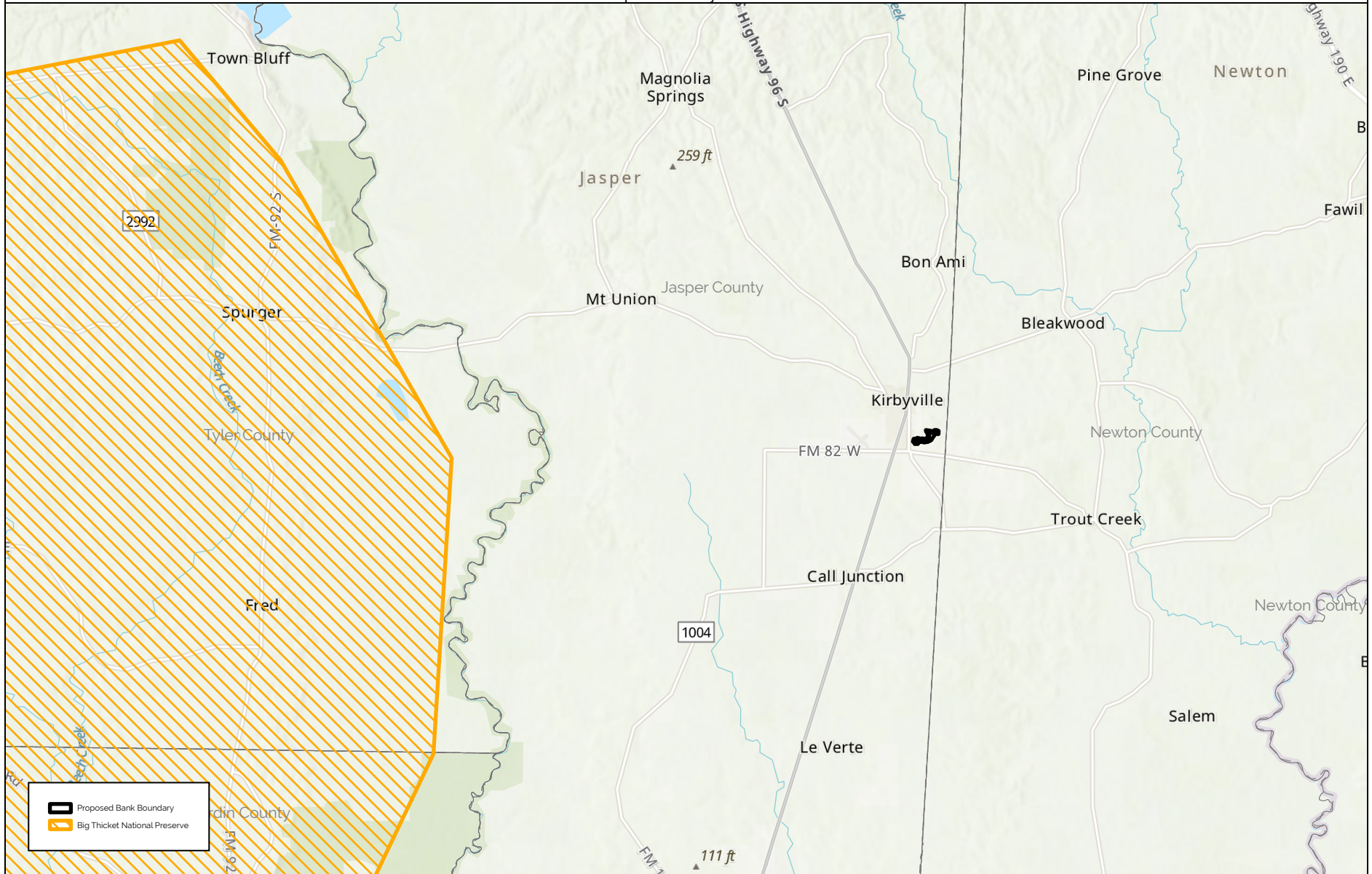


Figure 1 - Location
Call Junction Mitigation Bank
Jasper County, Texas



0 18,590 37,180 55,770 74,360 92,950 Feet

OVERLAND
GEOSPITAL

Figure 2a- Area Topography
Call Junction Mitigation Bank
Jasper County, Texas

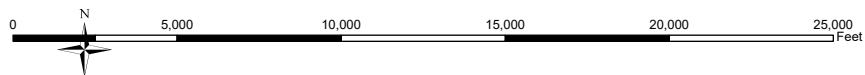
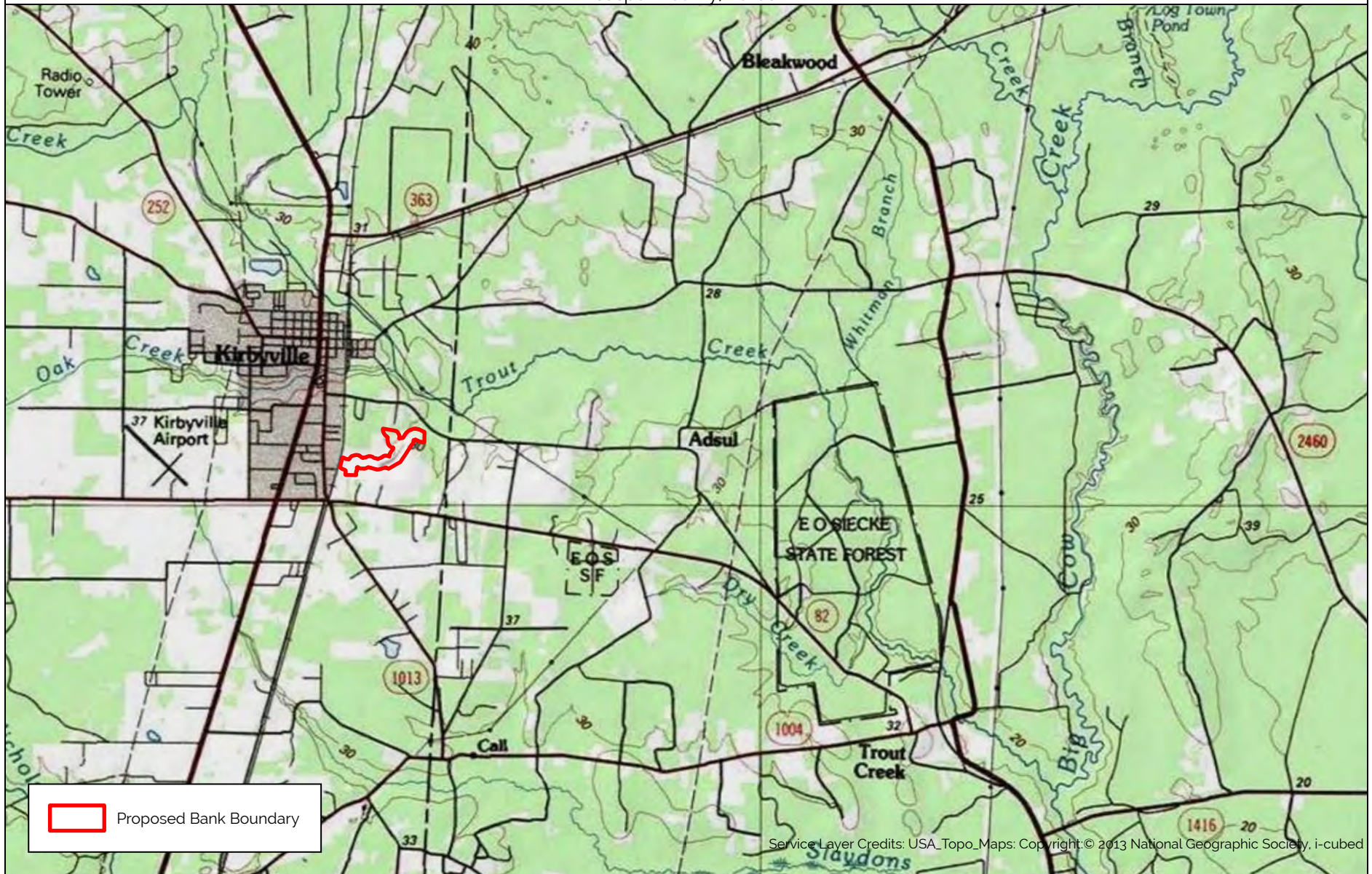
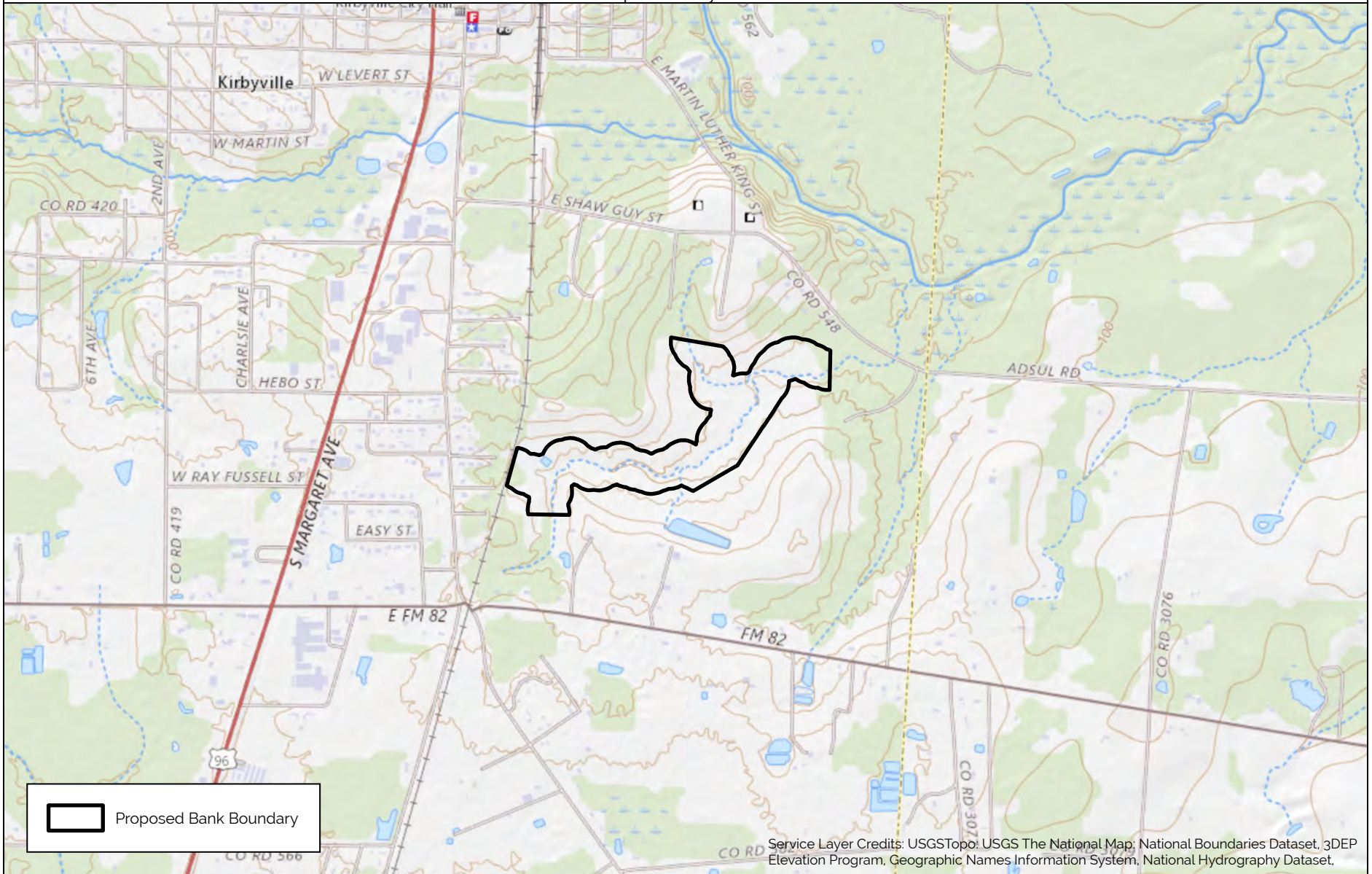


Figure 2b - Site Topography
Call Junction Mitigation Bank
Jasper County, Texas



0 1,000 2,000 3,000 4,000 5,000 Feet



Figure 3 - 2020 Aerial
Call Junction Mitigation Bank
Jasper County, Texas

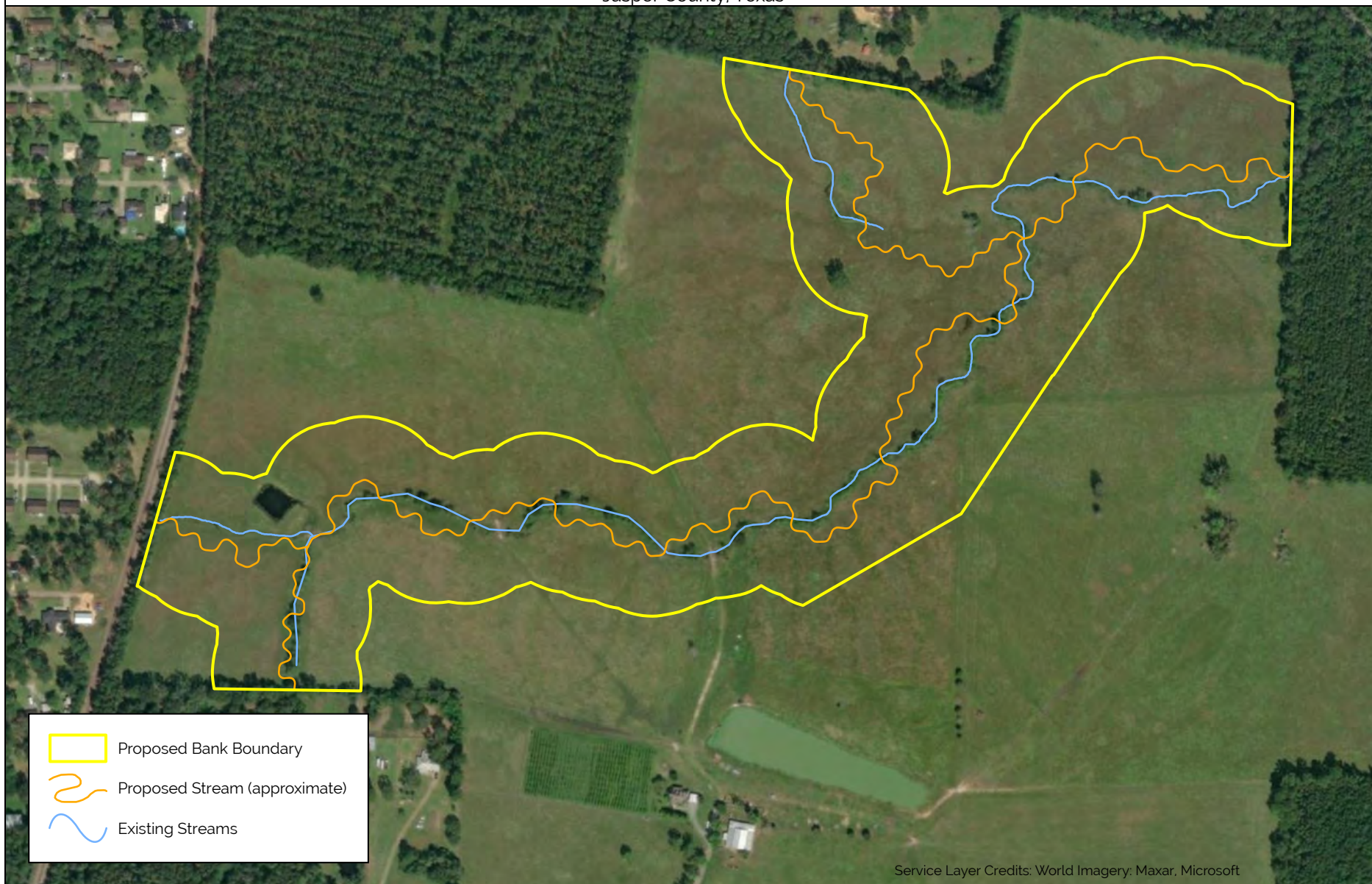
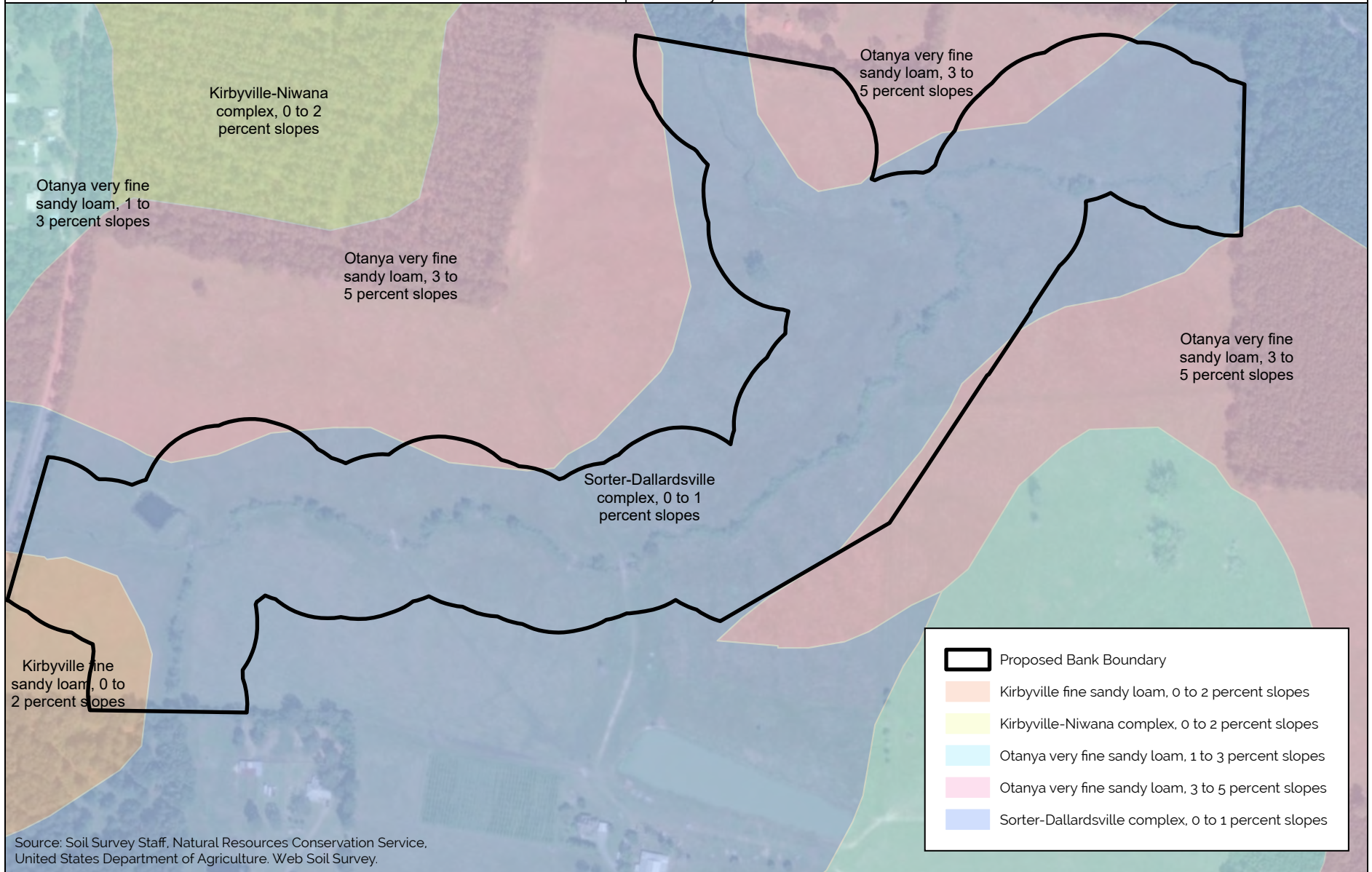


Figure 4 - Soils
Call Junction Mitigation Bank
Jasper County, Texas



Source: Soil Survey Staff, Natural Resources Conservation Service,
United States Department of Agriculture. Web Soil Survey.



0 240 480 720 960 1,200 Feet



Figure 5 - National Wetlands Inventory
Call Junction Mitigation Bank
Jasper County, Texas

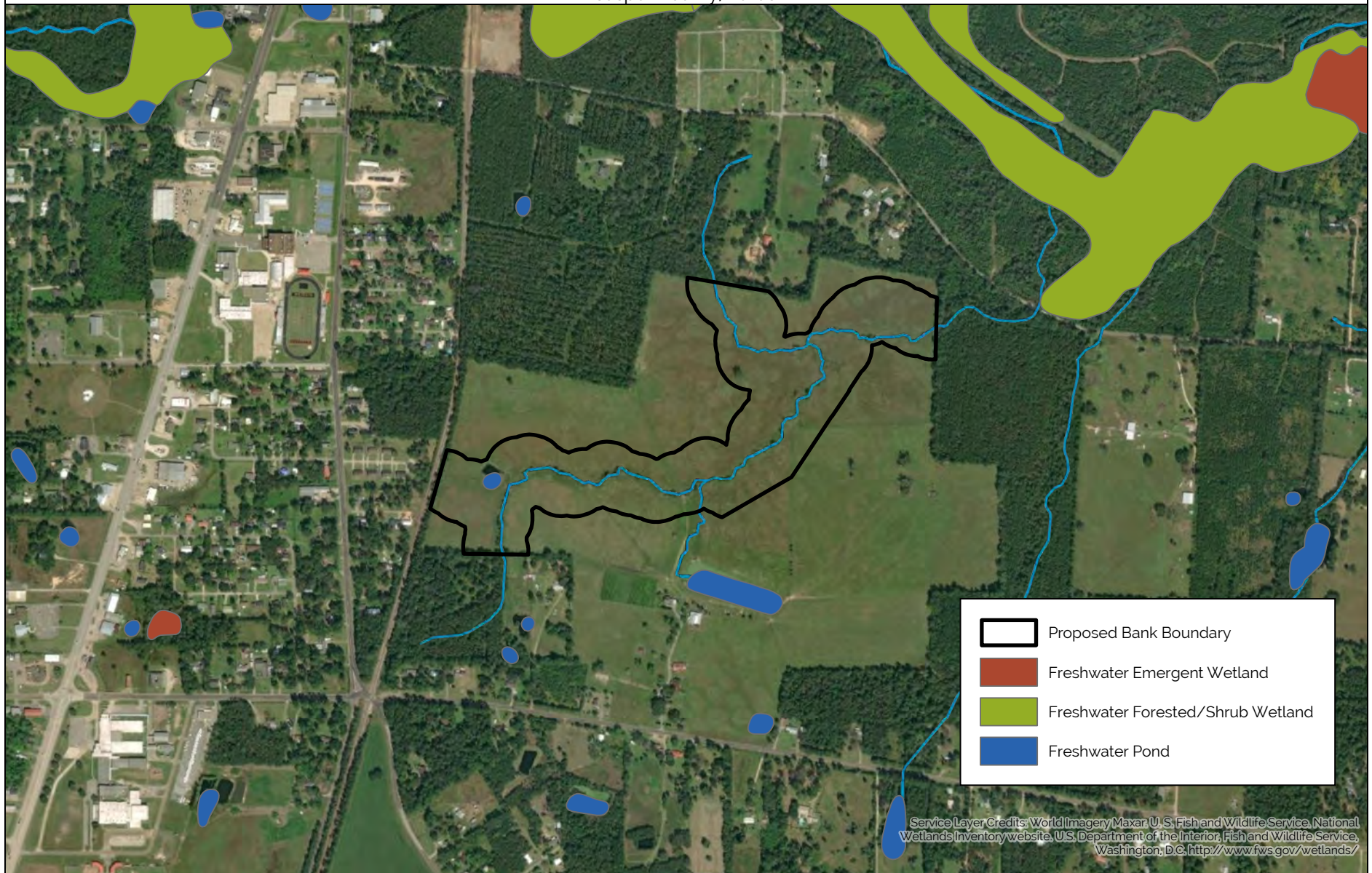


Figure 6 - Regional Geology
Call Junction Mitigation Bank
Jasper County, Texas

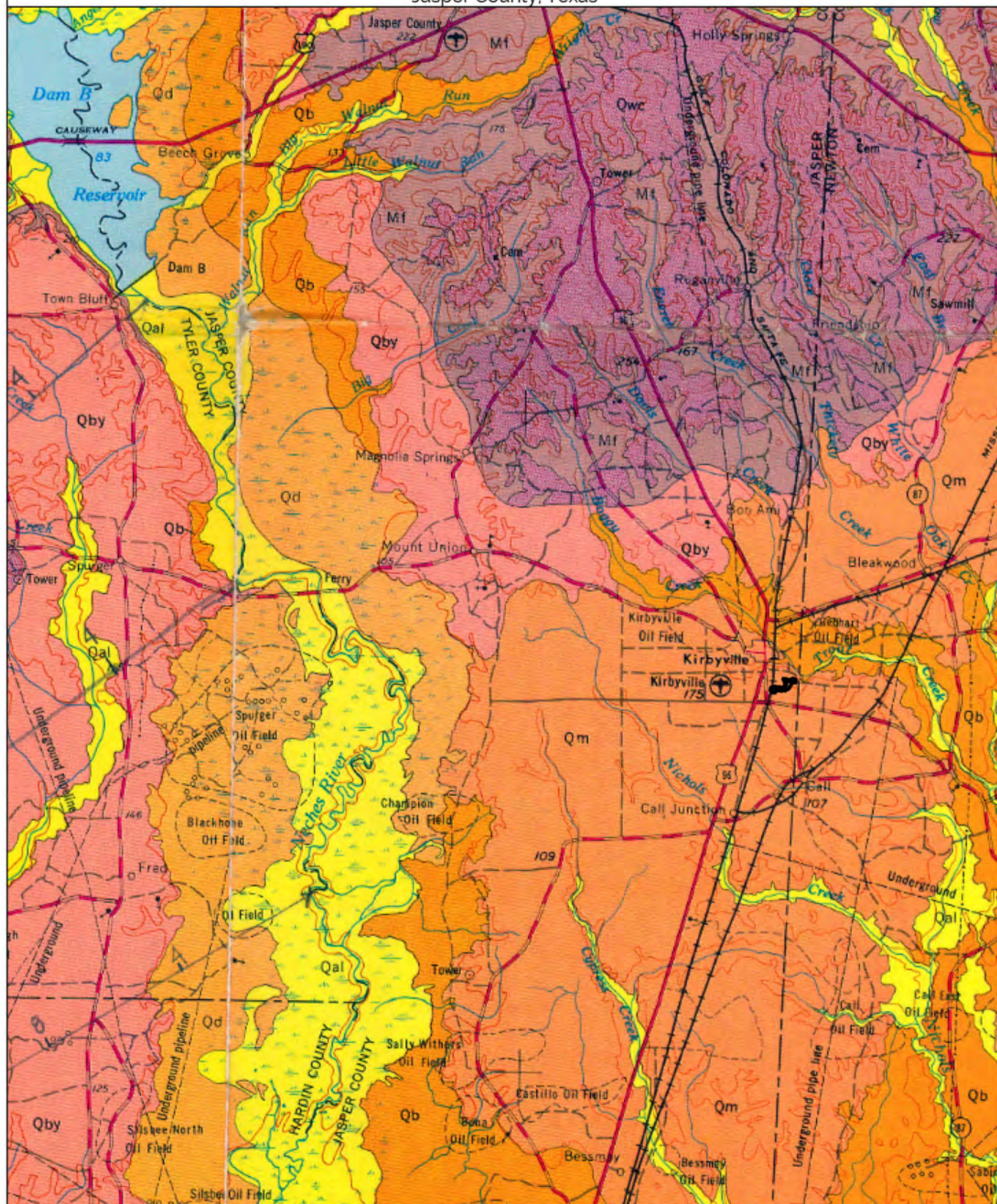
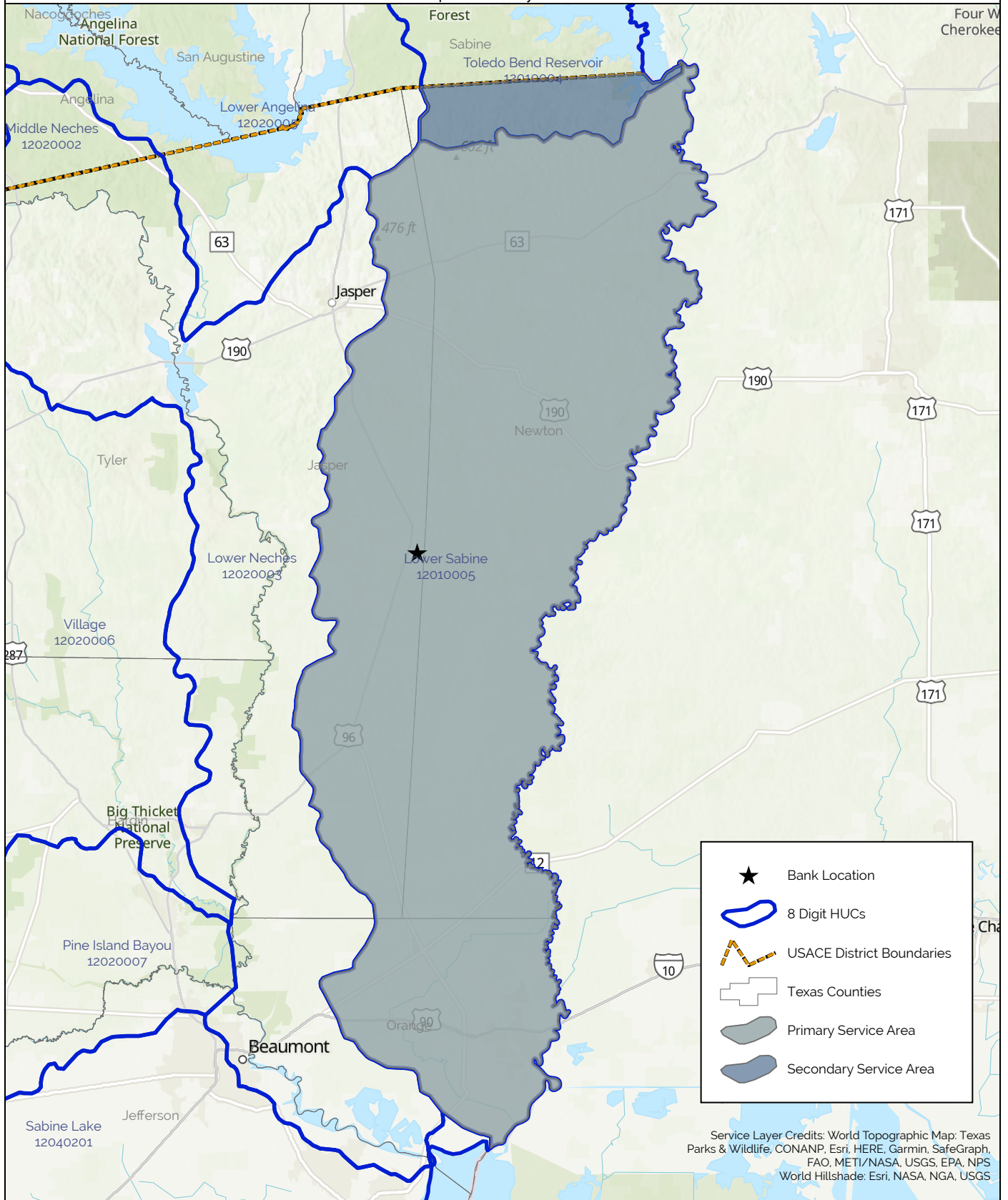


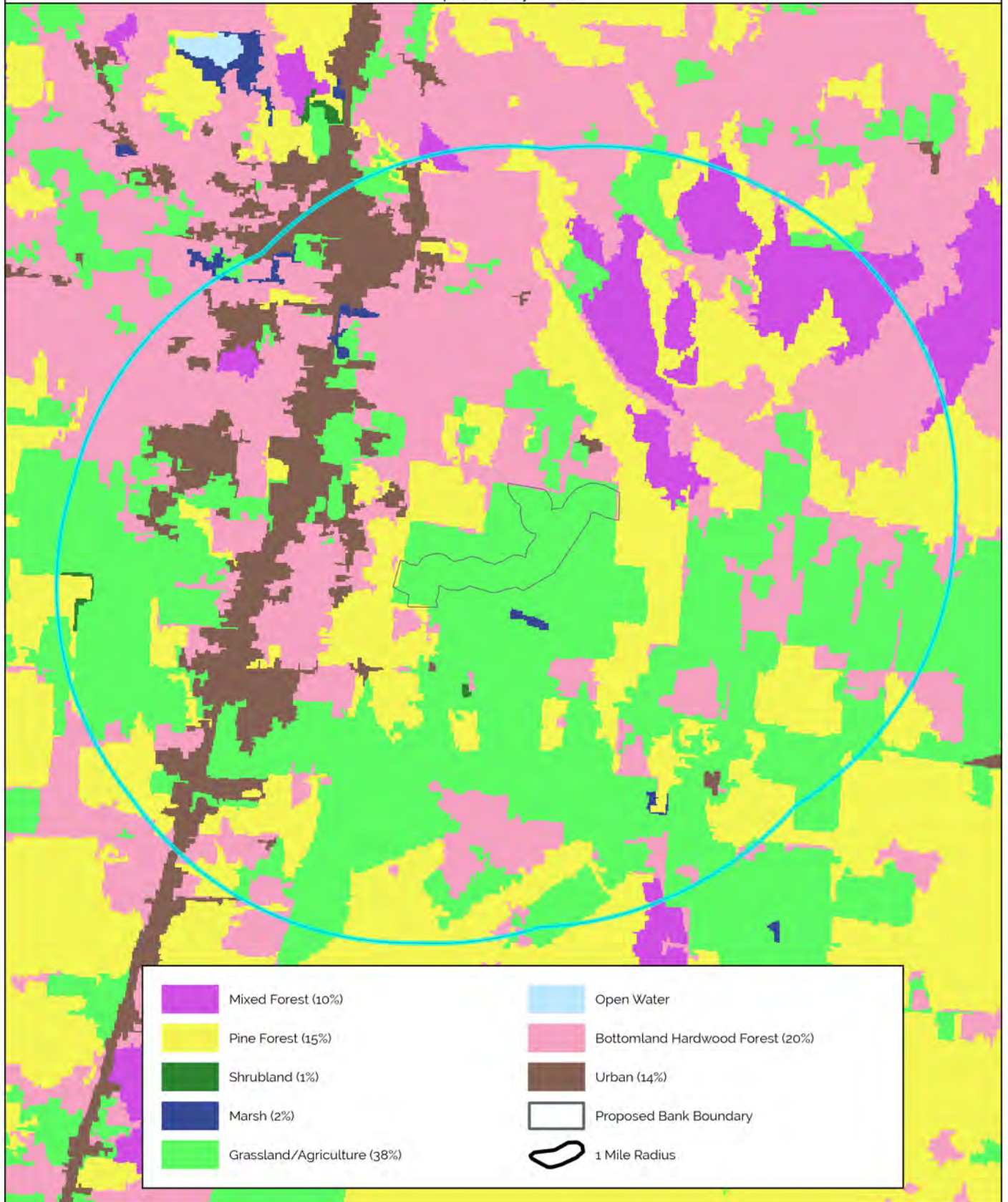
Figure 7 - Service Area
Call Junction Mitigation Bank
Jasper County, Texas



Service Layer Credits: World Topographic Map: Texas
Parks & Wildlife, CONANP, Esri, HERE, Garmin, SafeGraph,
FAO, METI/NASA, USGS, EPA, NPS
World Hillshade: Esri, NASA, NGA, USGS



Figure 8- Land Use Within One Mile Radius
Call Junction Mitigation Bank
Jasper County, Texas

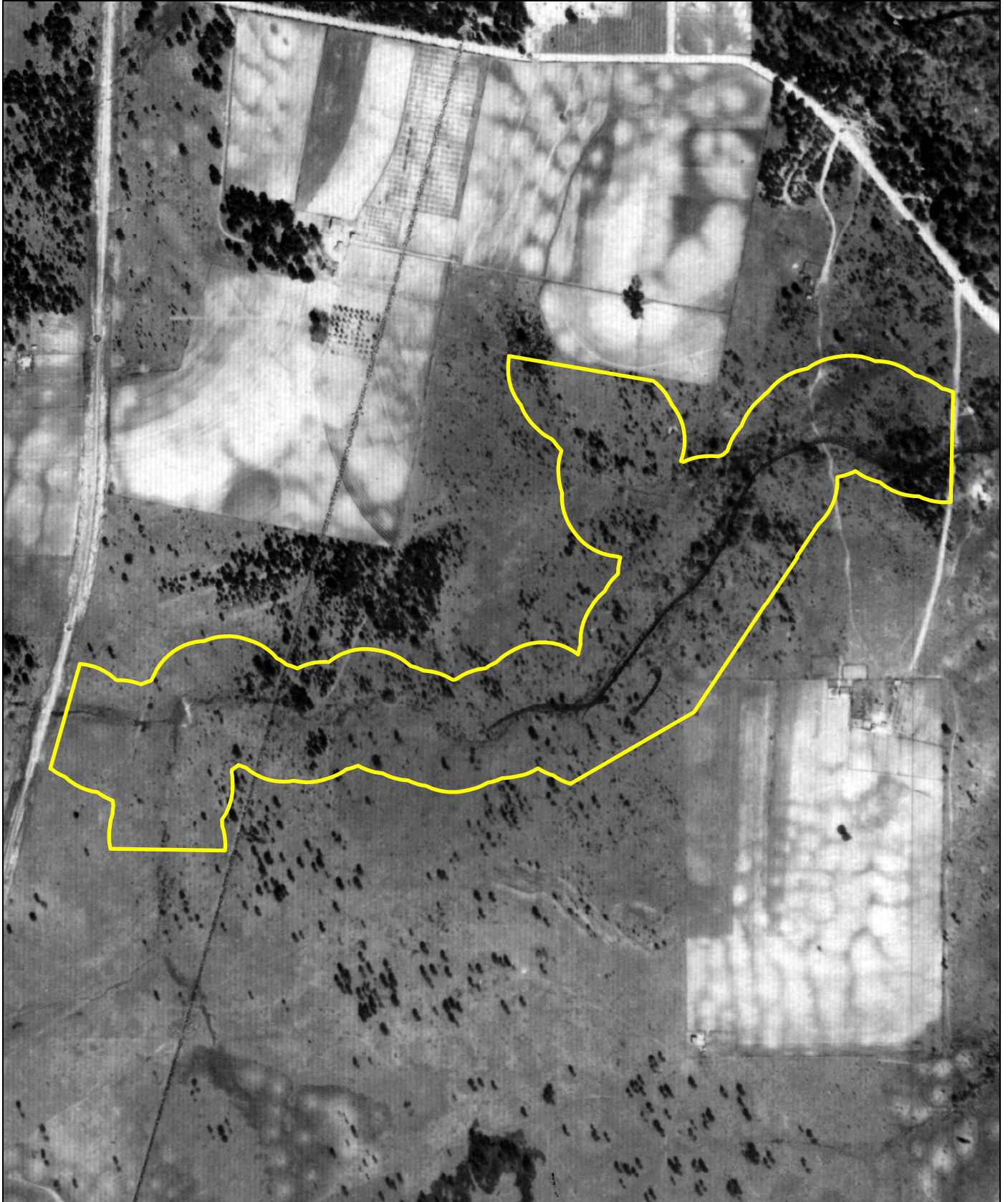


0 1,000 2,000 3,000 Feet

Land Use Data Source: Texas Parks and Wildlife



Figure 9a - 1939
Call Junction Mitigation Bank
Jasper County, Texas



0 0.09 0.18 0.27 Miles

Image Source: United States Agricultural Stabilization and Conservation Service



Figure 9b - 1952
Call Junction Mitigation Bank
Jasper County, Texas

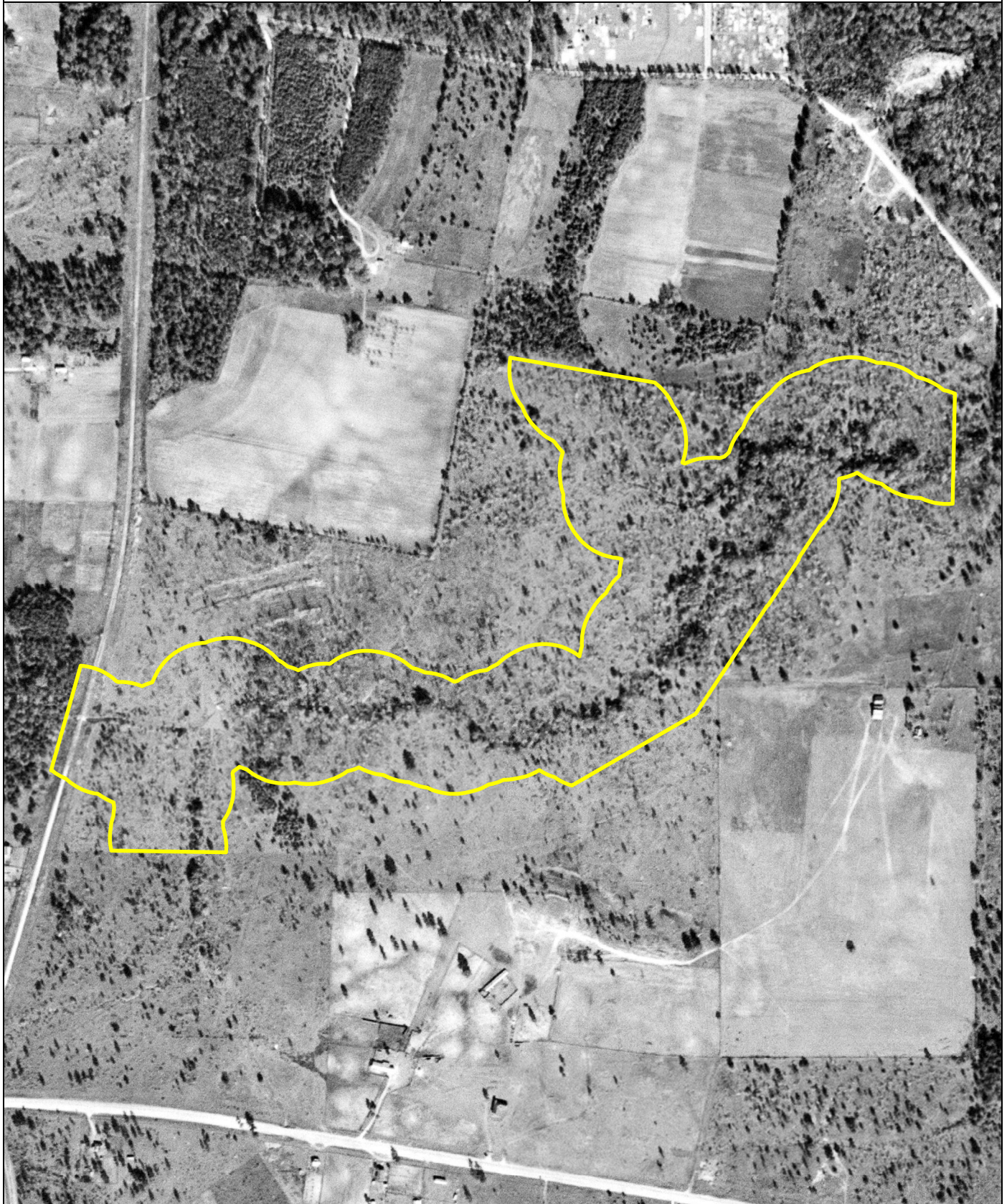
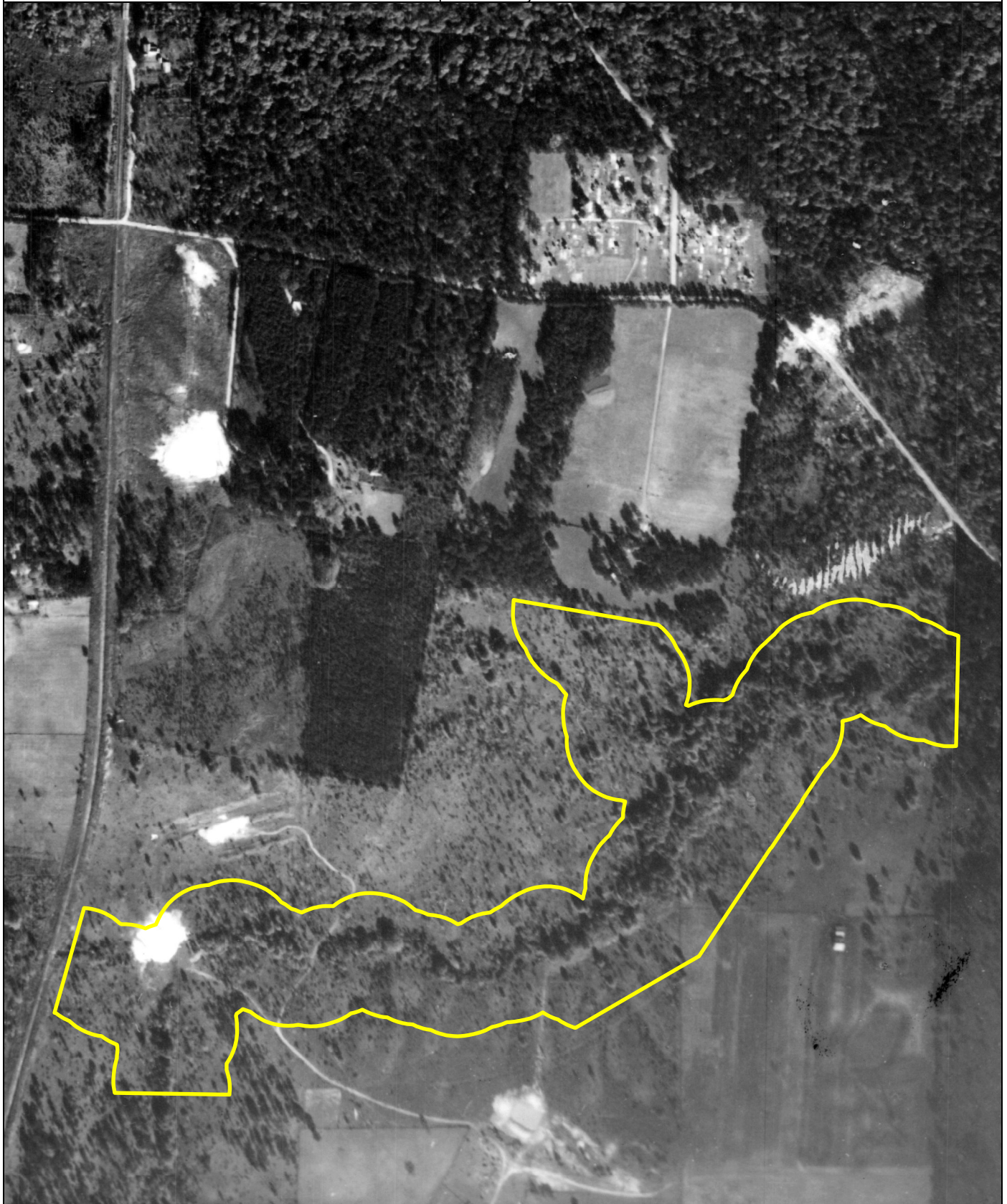


Image Source: United States Geological Survey



Figure 9c - 1958
Call Junction Mitigation Bank
Jasper County, Texas



0 0.09 0.18 0.27 Miles

Image Source: United States Agricultural Stabilization and
Conservation Service



Figure 9d - 1968
Call Junction Mitigation Bank
Jasper County, Texas

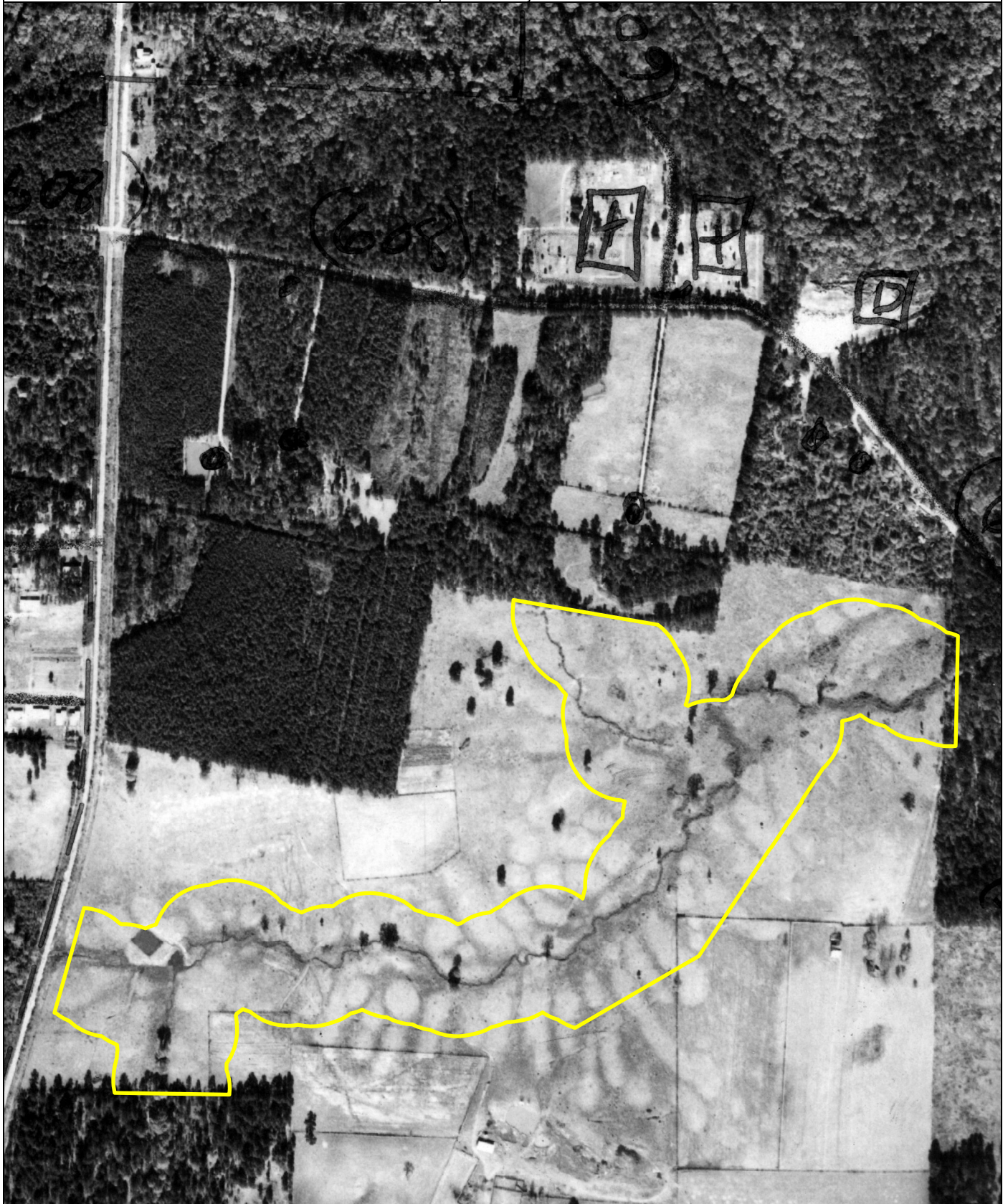
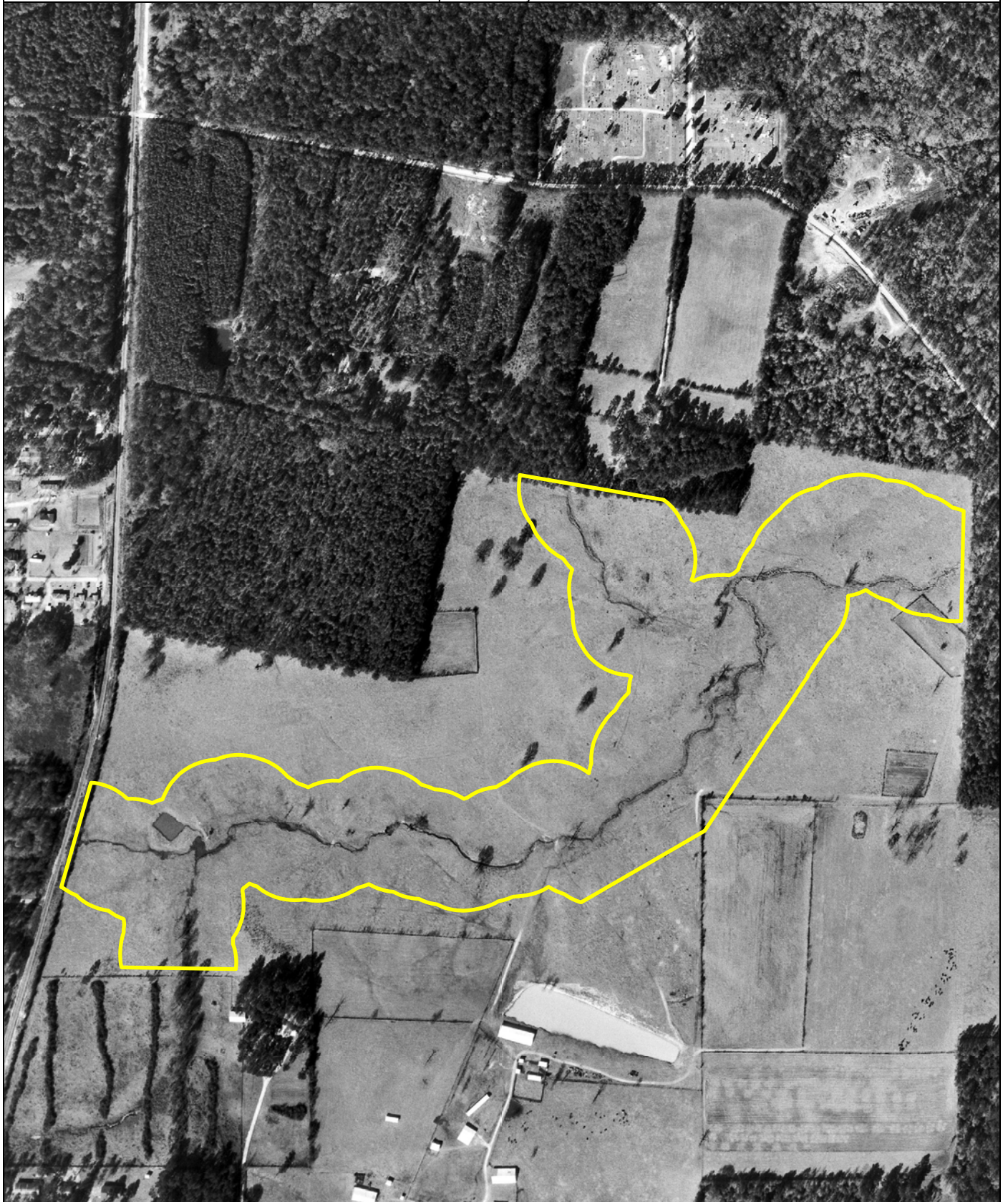


Image Source: United States Agricultural Stabilization and
Conservation Service



Figure 9e - 1976
Call Junction Mitigation Bank
Jasper County, Texas



0 0.09 0.18 0.27 Miles

Image Source: United States Geological Survey



Figure 9f - 1983
Call Junction Mitigation Bank
Jasper County, Texas



Image Source: United States Geological Survey



Figure 9g - 1996
Call Junction Mitigation Bank
Jasper County, Texas



Image Source: United States Geological Survey



Figure 9h - 2004
Call Junction Mitigation Bank
Jasper County, Texas



0 0.09 0.18 0.27 Miles

Image Source: United States Department of Agriculture



Figure 9i - 2005
Call Junction Mitigation Bank
Jasper County, Texas

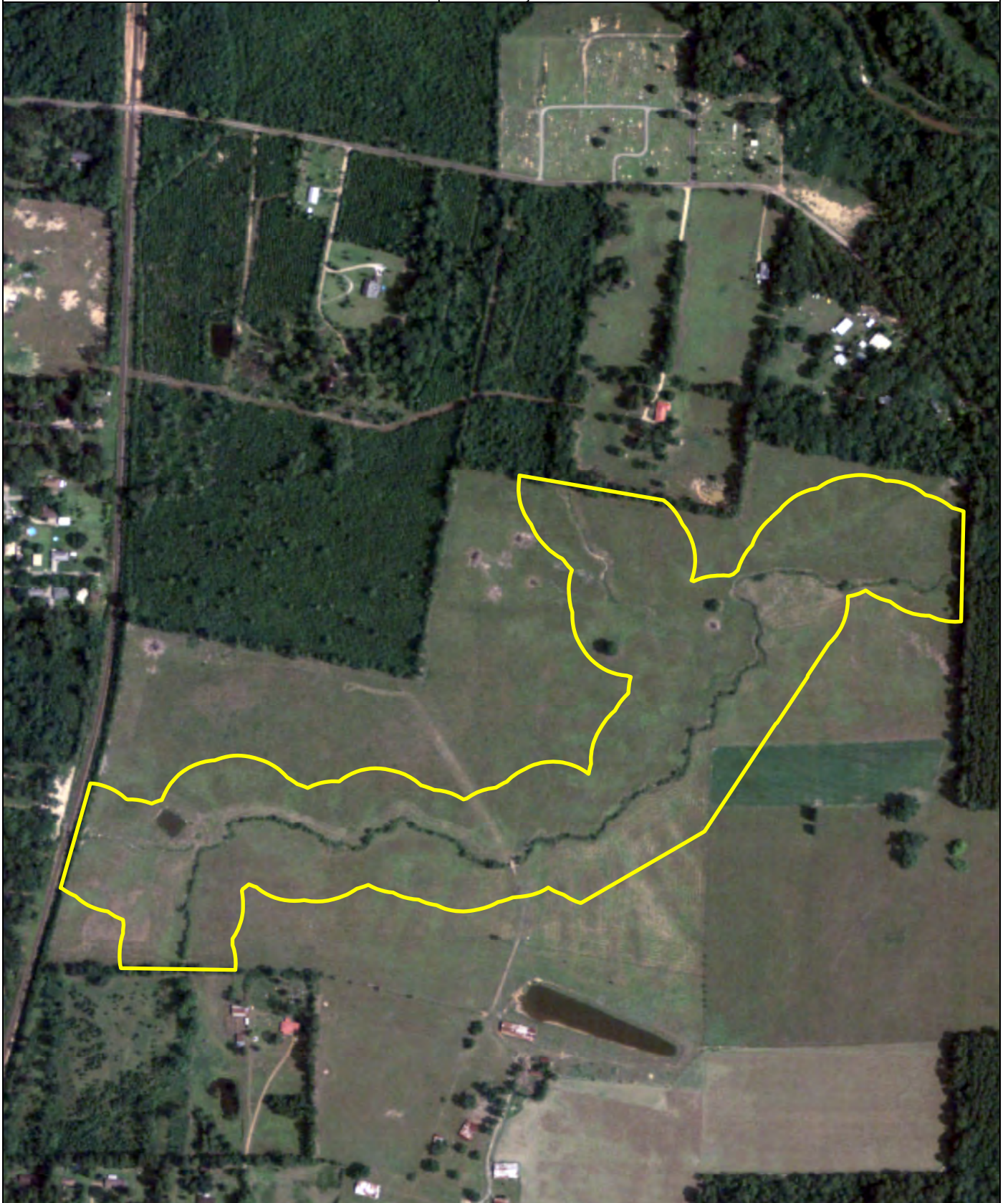


Image Source: United States Department of Agriculture



Figure 9j - 2006
Call Junction Mitigation Bank
Jasper County, Texas

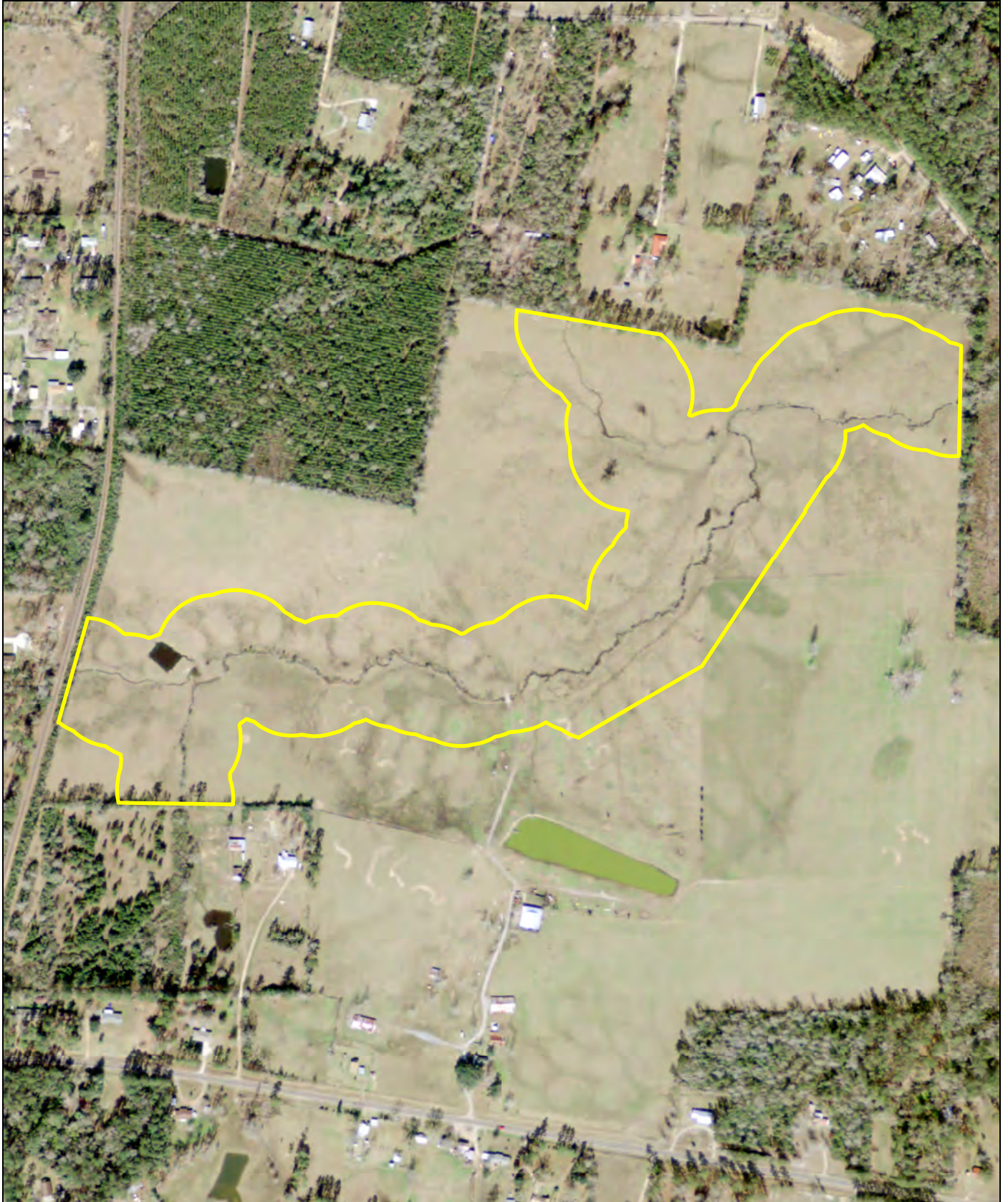


0 0.09 0.18 0.27 Miles

Image Source: United States Department of Agriculture



Figure 9k - 2008
Call Junction Mitigation Bank
Jasper County, Texas



0 0.09 0.18 0.27 Miles

Image Source: United States Department of Agriculture



Figure 10. Big Thicket National Preserve Map and the location of Call Junction Mitigation Bank

